

SAR TEST REPORT



Report No.: 15050054-FCC-H

Supersede Report No.: N/A

Applicant	b mobile HK Limited	
Product Name	Mobile Phone	
Model No.	AX1010	
Series No.	AX1005	
Standards	FCC 47 CFR Part2(2.1093) ANSI/IEEE C95.1-1999 IEEE 1528-2013 & Published RF Exposure KDB Procedures	
Test Date	November 24 to November 30, 2015	
Issue Date	December 23, 2015	
Test Result	PASS	
Equipment complied with the specification	<input checked="" type="checkbox"/>	
Equipment did not comply with the specification	<input type="checkbox"/>	
		
Wiky Jam Test Engineer	David Huang Checked By	
This test report may be reproduced in full only Test result presented in this test report is applicable to the tested sample only		

Issued by:

SIEMIC (SHENZHEN-CHINA) LABORATORIES

Zone A, Floor 1, Building 2 Wan Ye Long Technology Park

South Side of Zhoushi Road, Bao'an District, Shenzhen, Guangdong China 518108

Phone: +86 0755 2601 4629801 Email: China@siemic.com.cn

Laboratory Introduction

SIEMIC, headquartered in the heart of Silicon Valley, with superior facilities in US and Asia, is one of the leading independent testing and certification facilities providing customers with one-stop shop services for Compliance Testing and Global Certifications.



In addition to testing and certification, SIEMIC provides initial design reviews and compliance management throughout a project. Our extensive experience with China, Asia Pacific, North America, European, and International compliance requirements, assures the fastest, most cost effective way to attain regulatory compliance for the global markets.

Accreditations for Conformity Assessment

Country/Region	Scope
USA	EMC, RF/Wireless, SAR, Telecom
Canada	EMC, RF/Wireless, SAR, Telecom
Taiwan	EMC, RF, Telecom, SAR, Safety
Hong Kong	RF/Wireless, SAR, Telecom
Australia	EMC, RF, Telecom, SAR, Safety
Korea	EMI, EMS, RF, SAR, Telecom, Safety
Japan	EMI, RF/Wireless, SAR, Telecom
Singapore	EMC, RF, SAR, Telecom
Europe	EMC, RF, SAR, Telecom, Safety

Test Report	15050054-FCC-H
Page	3 of 149

This page has been left blank intentionally.

CONTENTS

1	EUT INFORMATION.....	5
2	TECHNICAL DETAILS	6
3	INTRODUCTION	7
4	SAR MEASUREMENT SETUP	8
5	ANSI/IEEE C95.1 – 1999 RF EXPOSURE LIMIT	19
6	SYSTEM AND LIQUID VERIFICATION	20
7	UNCERTAINTY ASSESSMENT	32
8	TEST INSTRUMENT	35
9	OUTPUT POWER VERIFICATION	36
10	EXPOSURE CONDITIONS CONSIDERATION	63
11	SAR TEST RESULTS.....	64
12	SAR MEASUREMENT REFERENCES.....	72
	ANNEX A CALIBRATION REPORTS	89
	ANNEX B SAR SYSTEM PHOTOGRAPHS.....	144
	ANNEX C SETUP PHOTOGRAPHS	145

1 EUT INFORMATION

EUT Information	
EUT Description	Mobile Phone
Model No	AX1010
Series No.	AX1005
Input Power	Li-ion Battery Model: AX1010 Charging Voltage: 3.8V ,1450mAh(5.51Wh)
Maximum Conducted Output Power to Antenna	GSM 850 Voice : 31.91dBm PCS1900 Voice:29.61 dBm WCDMA Band V (Class 3): 23.08dBm WCDMA Band II (Class 3):23.96 dBm LTE Band 2(Class 3): 23.65dBm LTE Band 4(Class 3): 23.41dBm LTE Band 5(Class 3): 22.79dBm LTE Band 7(Class 3): 22.84dBm
LTE Bandwidths	LTE Band 2(PCS):1.4MHz, 3MHz, 5MHz, 10MHz, 15MHz, 20MHz LTE Band 4(AWS): 1.4MHz, 3MHz, 5MHz, 10MHz, 15MHz, 20MHz LTE Band 5: 1.4MHz, 3MHz, 5MHz, 10MHz LTE Band 7(IMT-E): 5MHz, 10MHz, 15MHz, 20MHz
Highest Reported SAR Level(s)	0.16W/Kg 1g Head Tissue 0.79W/Kg 1g Body Tissue
Classification Per Stipulated Test Standard	Portable Device, Class B, No DTM Mode
Multi-SIM	N/A
Co-located TX	WWAN can transmit simultaneously with Bluetooth WIFI cannot transmit simultaneously with Bluetooth WWAN can transmit simultaneously with WiFi
Antenna Separation distances	9cm - WWAN antenna-to-WIFI/Bluetooth antenna
Antenna Type(s)	PIFA Antenna(WWAN)
Accessory	Earphone

Equipment Class	Highest Reported SAR (W/kg)		
	Head	Body-Worn	Hotspot
WWAN/PCE	0.16	0.79	0.79
Max Simultaneous sum SAR	0.98		

2 TECHNICAL DETAILS

Purpose	Compliance testing of Mobile Phone model AX1010 with stipulated standard
Applicant / Client	b mobile HK Limited Flat 18; 14/F Block 1; Golden Industrial Building;16-26 Kwai Tak Street; Kwai Chung;New Territories; Hong Kong
Manufacturer	b mobile HK Limited Flat 18; 14/F Block 1; Golden Industrial Building;16-26 Kwai Tak Street; Kwai Chung;New Territories; Hong Kong
Laboratory performing the tests	SIEMIC(Shenzhen-China) Laboratories Zone A, Floor 1, Building 2, Wan Ye Long Technology Park, South Side of Zhoushi Road, Bao'an District, Shenzhen 518108, Guangdong, P.R.C. Tel: +(86) 0755-26014629 VIP Line:950-4038-0435
Test report reference number	15050054-FCC-H
Date EUT received	November 23th , 2015
Standard applied	See Page72
Dates of test (from – to)	November 24th, 2015~ November 30th, 2015
No of Units:	1
Equipment Category:	PCE
Trade Name:	Bmobile
Model Name:	AX1010
Series No.	AX1005
RF Operating Frequency (ies)	GSM850 TX : 824.2 ~ 848.8 MHz; RX : 869.2 ~ 893.8 MHz PCS1900 TX : 1850.2 ~ 1909.8 MHz; RX : 1930.2 ~ 1989.8 MHz UMTS-FDD Band V TX : 826.4 ~ 846.6 MHz; RX : 871.4 ~ 891.6 MHz UMTS-FDD Band II TX :1852.4 ~ 1907.6 MHz; RX : 1932.4 ~ 1987.6 MHz LTE Band 2 TX: 1852.5 ~ 1907.5 MHz; RX : 1932.5 ~ 1987.5 MHz LTE Band 4 TX: 1712.5 ~ 1752.5 MHz; RX : 2112.5 ~ 2152.5 MHz LTE Band 5 TX: 826.5 ~ 846.5 MHz; RX : 871.5 ~ 891.5 MHz LTE Band 7 TX: 2500~2570MHz; RX : 2620~2690 MHz BT & BLE:2402~ 2480MHz(TX/RX) WIFI:802.11b/g/n(20M): 2412-2472 MHz(TX/RX) WIFI: 802.11n(40M): 2422-2452 MHz(TX/RX)
Modulation:	GSM / GPRS : GMSK EGPRS: GMSK,8PSK WCDMA:QPSK LTE: QPSK, 16QAM Wifi: DSSS, OFDM Bluetooth: GFSK, $\pi/4$ -DQPSK, 8DPSK BLE:GFSK
GPRS/EGPRS Multi-slot class	8/10/12
FCC ID	ZSW-30-021

3 INTRODUCTION

Introduction

This measurement report shows compliance of the EUT with ANSI/IEEE C95.1-1999 and FCC 47 CFR Part2 (2.1093)

The test procedures, as described in IEEE 1528-2013 Standard for IEEE Recommended Practice for Determining the Peak Spatial-Average Specific Absorption Rate (SAR) in the Human Head from Wireless Communications Devices: Measurement Techniques(300MHz~6GHz) and Published RF Exposure KDB Procedures

SAR Definition

Specific Absorption Rate is defined as the time derivative (rate) of the incremental energy (dW) absorbed by (dissipated in) an incremental mass (dm) contained in a volume element (dV) of a given density (ρ).

$$SAR = \frac{d}{dt} \left(\frac{dW}{dm} \right) = \frac{d}{dt} \left(\frac{dW}{\rho dV} \right)$$

SAR is expressed in units of watts per kilogram (W/kg). SAR can be related to the electric field at a point by

$$SAR = \frac{\sigma |E|^2}{\rho}$$

where:

- σ = conductivity of the tissue (S/m)
- ρ = mass density of the tissue (kg/m³)
- E = rms electric field strength (V/m)

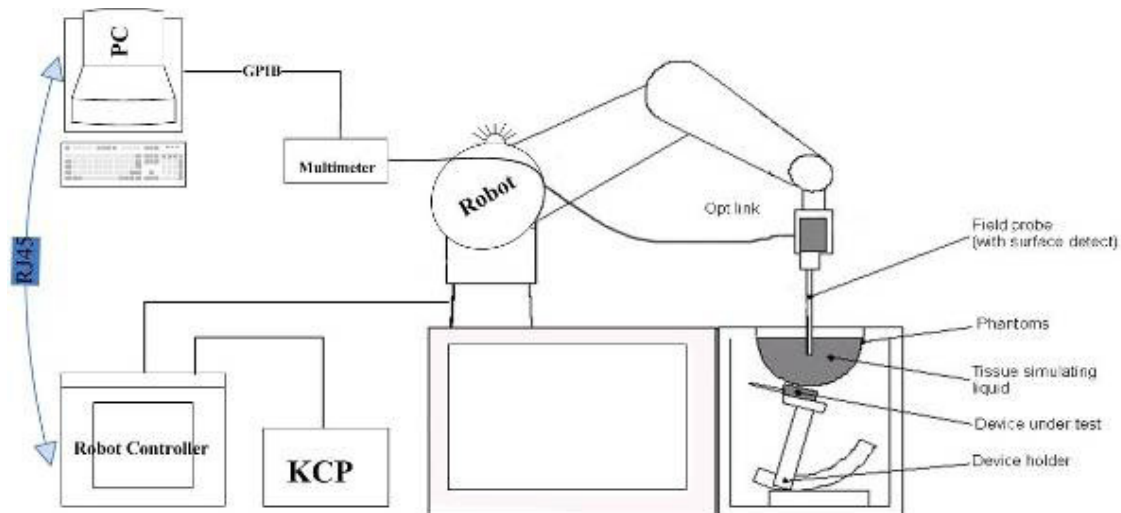
4 SAR MEASUREMENT SETUP

Dosimetric Assessment System

These measurements were performed with the automated near-field scanning system OPENSAR from SATIMO. The system is based on a high precision robot (working range: 850 mm), which positions the probes with a positional repeatability of better than ± 0.02 mm. Special E- and H-field probes have been developed for measurements close to material discontinuity, the sensors of which are directly loaded with a Schottky diode and connected via highly resistive lines to the data acquisition unit.

The SAR measurements were conducted with dosimetric probe (manufactured by SATIMO), designed in the classical triangular configuration and optimized for dosimetric evaluation. The probe has been calibrated according to the procedure described in SAR standard with accuracy of better than $\pm 10\%$. The spherical isotropy was evaluated with the procedure described in SAR standard and found to be better than ± 0.25 dB. The phantom used was the SAM Phantom as described in FCC supplement C, IEEE P1528 and CENELEC EN62209-1.

Measurement System Diagram



The OPENSAR system for performing compliance tests consist of the following items:

1. A standard high precision 6-axis robot (KUKA) with controller and software.
2. KUKA Control Panel (KCP).
3. A dosimetric probe, i.e., an isotropic E-field probe optimized and calibrated for usage in tissue simulating liquid. The probe is equipped with an optical surface detector system.
4. The functions of the PC plug-in card are to perform the time critical task such as signal filtering, surveillance of the robot operation fast movement interrupts.

Test Report	15050054-FCC-H
Page	9 of 149

5. A computer operating Windows XP.
6. OPENSAR software.
7. Remote control with teaches pendant and additional circuitry for robot safety such as warning lamps, etc.
8. The SAM phantom enabling testing left-hand right-hand and body usage.
9. The Position device for handheld EUT.
10. Tissue simulating liquid mixed according to the given recipes (see Application Note).
11. System validation dipoles to validate the proper functioning of the system.

EP100 Probe



Construction Symmetrical design with triangular Core. Built-in shielding against static charges Calibration in air from 100 MHz to 2.5 GHz. In brain and muscle simulating tissue at frequencies from 800 to 6000 MHz (accuracy of 8%) .

Frequency 100 MHz to 6 GHz;

Linearity ; 0.25 dB (100 MHz to 6 GHz) ,

Directivity : 0.25 dB in brain tissue (rotation around probe axis) 0.5 dB in brain tissue (rotation normal probe axis)

Dynamic : 0.001W/kg to > 100W/kg;

Range Linearity: 0.25 dB

Surface : 0.2 mm repeatability in air and liquids

Dimensions Overall length: 330 mm

Tip length: 16 mm

Body diameter: 8 mm

Tip diameter: 2.6 mm

Distance from probe tip to dipole centers: <1.5 mm

Application General dosimetric up to 6 GHz

Compliance tests of GSM Mobile phones

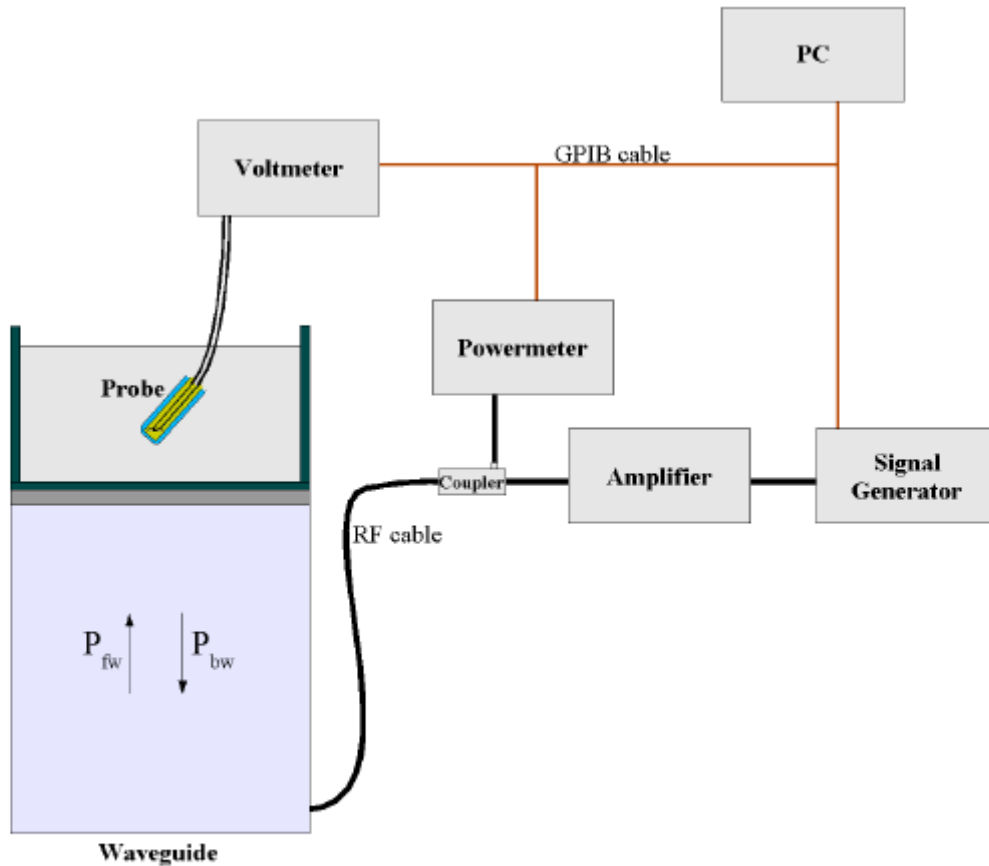
Fast automatic scanning in arbitrary phantoms

The SAR measurements were conducted with the dosimetric probe designed in the classical triangular configuration and optimized for dosimetric evaluation. The probe is constructed using the thick film technique, with printed resistive lines on ceramic substrates.

It is connected to the KRC box on the robot arm and provides an automatic detection of the phantom surface. The 3D file of the phantom is include in OpenSAR software. The Video Positioning System allow the system to take the automatic reference and to move the probe safely and accurately on the phantom.

E-Field Probe Calibration Process

Probe calibration is realized, in compliance with CENELEC EN50361; CEI/IEC 62209 and IEEE 1528 std, with CALISAR, SATIMO proprietary calibration system. The calibration is performed with the technique using reference waveguide.



$$SAR = \frac{4(P_{fw} - P_{bw})}{ab\delta} \cos^2\left(\pi \frac{y}{a}\right) e^{-(2z/\delta)}$$

Where :

- P_{fw} = Forward Power
- P_{bw} = Backward Power
- a and b = Waveguide dimensions
- δ = Skin depth

Keithley configuration:

Rate = Medium; Filter =ON; RDGS=10; FILTER TYPE =MOVING AVERAGE; RANGE AUTO

After each calibration, a SAR measurement is performed on a validation dipole and compared with a NPL calibrated probe, to verify it.

Each probe is calibrated according to a dosimetric assessment procedure described in SAR standard with accuracy better than +/- 10%. The spherical isotropy was evaluated with the procedure described in SAR standard and found to be better than +/-0.25dB. The sensitivity parameters (NormX, NormY, NormZ), the diode compression parameter (DCP) and the conversion factor (ConvF) of the probe are tested. The free space E-field from probe outputs is determined in a test chamber. This is performed in a TEM cell for frequencies below 0.8 GHz, and in a waveguide above 0.8 GHz for free space. For the free space calibration, the probe is placed in the volumetric center of the cavity and at the proper orientation with the field. E-field correlation calibration is performed in a flat phantom filled with the appropriate simulated brain tissue.

SAM Phantom

The SAM Phantom SAM29 is constructed of a fiberglass shell integrated in a wooden table. The shape of the shell is in compliance with the specification set in IEEE 1528 and CENELEC EN62209-1, IEC62209-2.

The phantom enables the dosimetric evaluation of left and right hand phone usage as well as body mounted usage at the flat phantom region.

A cover prevents the evaporation of the liquid.

Reference markings on the Phantom allow the complete setup of all predefined phantom positions and measurement grids by manually teaching three points in the robot.

Shell Thickness: 2 0.2 mm

Filling Volume: Approx. 25 liters

Dimensions (H x L x W): 810 x 1000 x 500 mm

Liquid is filled to at least 15mm from the bottom of Phantom.



Device Holder

In combination with the Generic Twin Phantom V3.0, the Mounting Device enables the rotation of the mounted transmitter in spherical coordinates whereby the rotation points is the ear opening. The devices can be easily, accurately, and repeatedly positioned according to the FCC and CENELEC specifications. The device holder can be locked at different phantom locations (left head, right head, flat phantom).



Note: A simulating human hand is not used due to the complex anatomical and geometrical structure of the hand that may produced infinite number of configurations [10]. To produce the worst-case condition (the hand absorbs antenna output power), the hand is omitted during the tests.

Data Evaluation

The OPENSAR software automatically executes the following procedure to calculate the field units from the microvolt readings at the probe connector. The parameters used in the valuation are stored in the configuration modules of the software:

Probe Parameters	- Sensitivity	Norm _i
	- Conversion factor	ConvFi
	- Diode compression point Dcpi	
Device Parameter	- Frequency	f
	- Crest factor	cf
Media Parametrs	- Conductivity	σ
	- Density	ρ

These parameters must be set correctly in the software. They can either be found in the component documents or be imported into the software from the configuration files issued for the OPENSAR components.

The first step of the evaluation is a linearization of the filtered input signal to account for the compression characteristics of the detector diode. The compensation depends on the input signal, the diode type and the DC-transmission factor from the diode to the evaluation electronics. If the exciting field is pulsed, the crest factor of the signal must be known to correctly compensate for peak power. The formula for each channel can be given as

$$V_i = U_i + U_i^2 \cdot \frac{cf}{dcp_i}$$

Where V_i = Compensated signal of channel i ($i = x, y, z$)

U_i = Input signal of channel i ($i = x, y, z$)

cf = Crest factor of exciting field (DASY parameter)

dcp_i = Diode compression point (DASY parameter)

From the compensated input signals the primary field data for each channel can be evaluated:

$$E\text{-field probes: } E_i = \sqrt{\frac{V_i}{\text{Norm}_i \cdot \text{ConvF}}}$$

$$H\text{-field probes: } H_i = \sqrt{V_i} \cdot \frac{a_{i0} + a_{i1}f + a_{i2}f^2}{f}$$

Where V_i = Compensated signal of channel i ($i = x, y, z$)
 Norm_i = Sensor sensitivity of channel i ($i = x, y, z$)
 $\mu\text{V}/(\text{V/m})^2$ for E0field Probes
 ConvF = Sensitivity enhancement in solution
 a_{ij} = Sensor sensitivity factors for H-field probes

f = Carrier frequency (GHz)
 E_i = Electric field strength of channel i in V/m
 H_i = Magnetic field strength of channel i in A/m

The RSS value of the field components gives the total field strength (Hermitian magnitude):

$$E_{\text{tot}} = \sqrt{E_x^2 + E_y^2 + E_z^2}$$

The primary field data are used to calculate the derived field units.

$$SAR = E_{\text{tot}}^2 \cdot \frac{\sigma}{\rho \cdot 1000}$$

where SAR = local specific absorption rate in mW/g
 E_{tot} = total field strength in V/m
 σ = conductivity in [mho/m] or [siemens/m]
 ρ = equivalent tissue density in g/cm³

Note that the density is normally set to 1 (or 1.06), to account for actual brain density rather than the density of the simulation liquid.

The power flow density is calculated assuming the excitation field as a free space field.

$$P_{\text{pwe}} = \frac{E_{\text{tot}}^2}{3770} \quad \text{or} \quad P_{\text{pwe}} = H_{\text{tot}}^2 \cdot 37.7$$

where P_{pwe} = Equivalent power density of a plane wave in mW/cm²
 E_{tot} = total electric field strength in V/m
 H_{tot} = total magnetic field strength in A/m

SAR Evaluation – Peak Spatial - Average

The procedure for assessing the peak spatial-average SAR value consists of the following steps

- **Power Reference Measurement**

The reference and drift jobs are useful jobs for monitoring the power drift of the device under test in the batch process. Both jobs measure the field at a specified reference position, at a selectable distance from the phantom surface. The reference position can be either the selected section's grid reference point or a user point in this section. The reference job projects the selected point onto the phantom surface, orients the probe perpendicularly to the surface, and approaches the surface using the selected detection method.

- **Area Scan**

The area scan is used as a fast scan in two dimensions to find the area of high field values, before doing a finer measurement around the hot spot. The sophisticated interpolation routines implemented in OPENSAR software can find the maximum locations even in relatively coarse grids. The scan area is defined by an editable grid. This grid is anchored at the grid reference point of the selected section in the phantom. When the area scan's property sheet is brought-up, grid was at to 15 mm by 15 mm and can be edited by a user.

- **Zoom Scan**

Zoom scans are used to assess the peak spatial SAR values within a cubic averaging volume containing 1 g and 10 g of simulated tissue. The default zoom scan measures 5 x 5 x 7 points within a cube whose base faces are centered around the maximum found in a preceding area scan job within the same procedure. If the preceding Area Scan job indicates more than one maximum, the number of Zoom Scans has to be enlarged accordingly (The default number inserted is 1).

- **Power Drift measurement**

The drift job measures the field at the same location as the most recent reference job within the same procedure, and with the same settings. The drift measurement gives the field difference in dB from the reading conducted within the last reference measurement. Several drift measurements are possible for one reference measurement. This allows a user to monitor the power drift of the device under test within a batch process. In the properties of the Drift job, the user can specify a limit for the drift and have OPENSAR software stop the measurements if this limit is exceeded.

SAR Evaluation – Peak SAR

The procedure for spatial peak SAR evaluation has been implemented according to the IEEE1529 standard. It can be conducted for 1 g and 10 g. The OPENSAR system allows evaluations that combine measured data and robot positions, such as:

- maximum search
- extrapolation
- boundary correction
- peak search for averaged SAR

During a maximum search, global and local maximum searches are automatically performed in 2-D after each Area Scan measurement with at least 6 measurement points. It is based on the evaluation of the local SAR gradient calculated by the Quadratic Shepard's method. The algorithm will find the global maximum and all local maxima within -2 dB of the global maxima for all SAR distributions.

Extrapolation

Extrapolation routines are used to obtain SAR values between the lowest measurement points and the inner phantom surface. The extrapolation distance is determined by the surface detection distance and the probe sensor offset. Several measurements at different distances are necessary for the extrapolation.

They are used in the Cube Scan to obtain SAR values between the lowest measurement points and the inner phantom surface. The routine uses the fourth order least square polynomial method for extrapolation. For a grid using 5x5x7 measurement points with 5mm resolution amounting to 343 measurement points, the uncertainty of the extrapolation routines is less than 1% for 1 g and 10 g cubes.

Definition of Reference Points

Ear Reference Point

Figure 6.2 shows the front, back and side views of the SAM Phantom. The point "M" is the reference point for the center of the mouth, "LE" is the left ear reference point (ERP), and "RE" is the right ERP. The ERPs are 15mm posterior to the entrance to the ear canal (EEC) along the B-M line (Back-Mouth), as shown in Figure 6.1. The plane passing through the two ear canals and M is defined as the Reference Plane. The line N-F (Neck-Front) is perpendicular to the reference plane and passing through the RE (or LE) is called the Reference Pivoting Line (see Figure 6.1). Line B-M is perpendicular to the N-F line. Both N-F and B-M lines are marked on the external phantom shell to facilitate handset positioning [5].

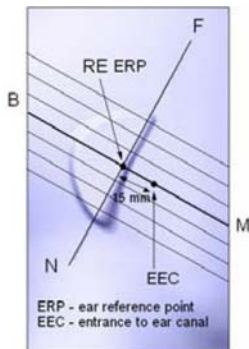


Figure 6.1 Close-up side view of ERP's



Figure 6.2 Front, back and side view of SAM

Device Reference Points

Two imaginary lines on the device need to be established: the vertical centerline and the horizontal line. The test device is placed in a normal operating position with the "test device reference point" located along the "vertical centerline" on the front of the device aligned to the "ear reference point" (See Fig. 6.3). The "test device reference point" is then located at the same level as the center of the ear reference point. The test device is positioned so that the "vertical centerline" is bisecting the front surface of the device at its top and bottom edges, positioning the "ear reference point" on the outer surface of both the left and right head phantoms on the ear reference point [5].

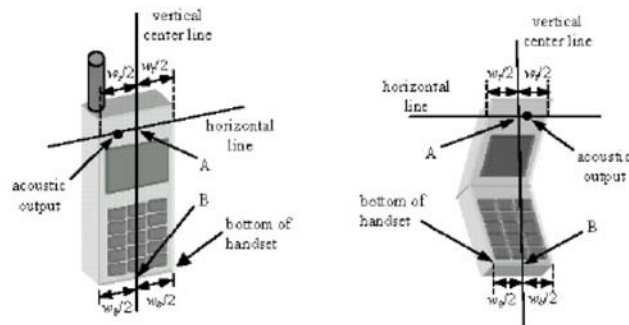


Figure 6.3 Handset Vertical Center & Horizontal Line Reference Points

Test Configuration – Positioning for Cheek / Touch

1. Position the device close to the surface of the phantom such that point A is on the (virtual) extension of the line passing through points RE and LE on the phantom (see Figure below), such that the plane defined by the vertical center line and the horizontal line of the device is approximately parallel to the sagittal plane of the phantom

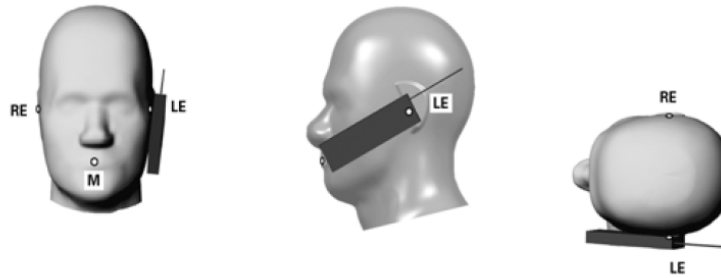


Figure 7.1 Front, Side and Top View of Cheek/Touch Position

2. Translate the device towards the phantom along the line passing through RE and LE until the device touches the ear.
3. While maintaining the device in this plane, rotate it around the LE-RE line until the vertical centerline is in the plane normal to MB-NF including the line MB (called the reference plane).
4. Rotate the device around the vertical centerline until the device (horizontal line) is symmetrical with respect to the line NF.
5. While maintaining the vertical centerline in the reference plane, keeping point A on the line passing through RE and LE and maintaining the device contact with the ear, rotate the device about the line NF until any point on the device is in contact with a phantom point below the ear (cheek). See Figure below.

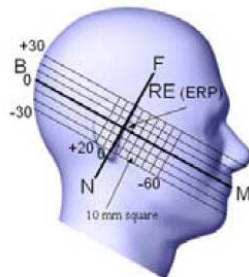


Figure 7.2 Side view w/ relevant markings

Test Configuration – Positioning for Ear / 15° Tilt

With the test device aligned in the Cheek/Touch Position”:

1. While maintaining the orientation of the device, retracted the device parallel to the reference plane far enough to enable a rotation of the device by 15 degrees.
2. Rotate the device around the horizontal line by 15 degrees.
3. While maintaining the orientation of the device, move the device parallel to the reference plane until any part of the device touches the head. (In this position, point A is located on the line RE-LE). The tilted position is obtained when the contact is on the pinna. If the contact is at any location other than the pinna, the angle of the device shall be reduced. The tilted position is obtained when any part of the device is in contact with the ear as well as a second part of the device is in contact with the head (see Figure below).

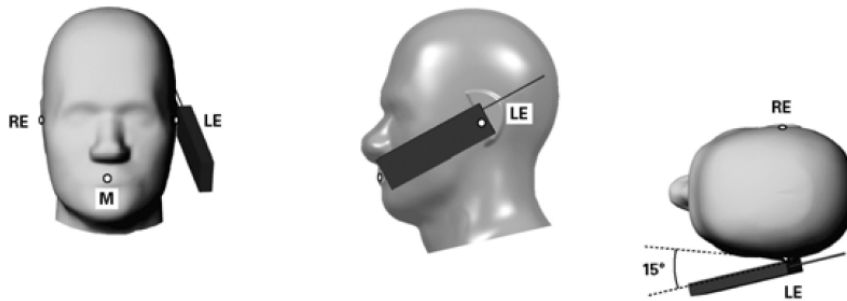
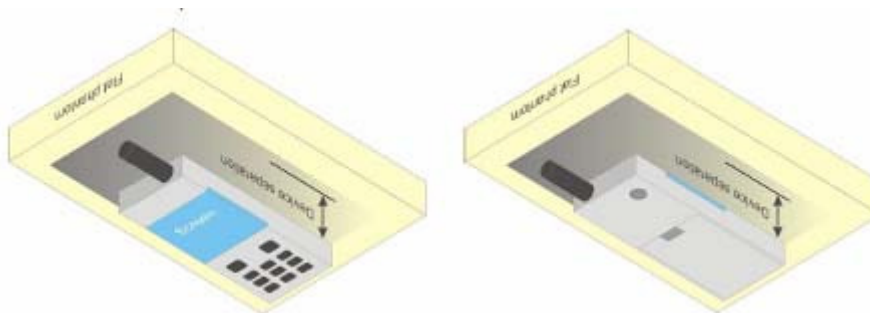


Figure 7.3 Front, Side and Top View of Ear/15° Tilt Position

Test Position – Body Worn Configurations

Body Worn Position

- (a) To position the device parallel to the phantom surface with either keypad up or down.
- (b) To adjust the device parallel to the flat phantom.
- (c) To adjust the distance between the device surface and the flat phantom to 1.5 cm or holster surface and the flat phantom to 0 cm.



5 ANSI/IEEE C95.1 – 1999 RF EXPOSURE LIMIT

In order for users to be aware of the body-worn operating requirements for meeting RF exposure compliance, operating instructions and cautions statements are included in the user's manual.

Uncontrolled Environment

Uncontrolled Environments are defined as locations where there is the exposure of individuals who have no knowledge or control of their exposure. The general population/uncontrolled exposure limits are applicable to situations in which the general public may be exposed or in which persons who are exposed as a consequence of their employment may not be made fully aware of the potential for exposure or cannot exercise control over their exposure. Members of the general public would come under this category when exposure is not employment-related; for example, in the case of a wireless transmitter that exposes persons in its vicinity.

Controlled Environment

Controlled Environments are defined as locations where there is exposure that may be incurred by persons who are aware of the potential for exposure, (i.e. as a result of employment or occupation). In general, occupational/controlled exposure limits are applicable to situations in which persons are exposed as a consequence of their employment, who have been made fully aware of the potential for exposure and can exercise control over their exposure. This exposure category is also applicable when the exposure is of a transient nature due to incidental passage through a location where the exposure levels may be higher than the general population/uncontrolled limits, but the exposed person is fully aware of the potential for exposure and can exercise control over his or her exposure by leaving the area or by some other appropriate means.

Table 8.1 Human Exposure Limits

	UNCONTROLLED ENVIRONMENT General Population (W/kg) or (mW/g)	CONTROLLED ENVIROMENT Professional Population (W/kg) or (mW/g)
SPATIAL PEAK SAR ¹ Brain	1.60	8.00
SPATIAL AVERAGE SAR ² Whole Body	0.08	0.40
SPATIAL PEAK SAR ³ Hands, Feet, Ankles, Wrists	4.00	20.00

¹ The Spatial Peak value of the SAR averaged over any 1 gram of tissue (defined as a tissue volume in the shape of a cube) and over the appropriate averaging time.

² The Spatial Average value of the SAR averaged over the whole body.

³ The Spatial Peak value of the SAR averaged over any 10 grams of tissue (defined as a tissue volume in the shape of a cube) and over the appropriate averaging time.

6 SYSTEM AND LIQUID VERIFICATION

Basic SAR system validation requirements

The SAR system must be validated against its performance specifications before it is deployed. When SAR probes, system components or software are changed, upgraded or recalibrated, these must be validated with the SAR system(s) that operates with such components. Reference dipoles are used with the required tissue-equivalent media for system validation,

The detailed system validation results are maintained by each test laboratory, which are normally not required for equipment approval. Only a tabulated summary of the system validation status, according to the validation date(s), measurement frequencies, SAR probes and tissue dielectric parameters is required in the SAR report.

System Setup

The system performance check verifies that the system operates within its specifications. System and operator errors can be detected and corrected. It is recommended that the system performance check be performed prior to any usage of the system in order to guarantee reproducible results. The system performance check uses normal SAR measurements in a simplified setup with a well characterized source. This setup was selected to give a high sensitivity to all parameters that might fail or vary over time. The system check does not intend to replace the calibration of the components, but indicates situations where the system uncertainty is exceeded due to drift or failure.

In the simplified setup for system evaluation, the DUT is replaced by a calibrated dipole and the power source is replaced by a continuous wave that comes from a signal generator. The calibrated dipole must be placed beneath the flat phantom section of the SAM twin phantom with the correct distance holder. The distance holder should touch the phantom surface with a light pressure at the reference marking and be oriented parallel to the long side of the phantom. The equipment setup is shown below:

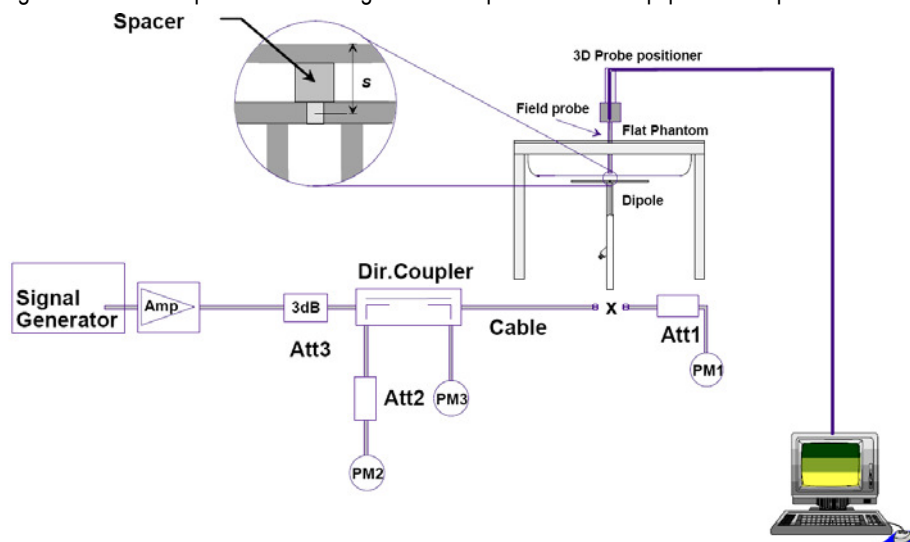


Fig 8.1 System Setup for System Evaluation

1. Signal Generator
2. Amplifier
3. Directional Coupler
4. Power Meter
5. Calibrated Dipole

Note: The output power on dipole port must be calibrated to 30 dBm (1000 mW) before dipole is connected.

System Verification Results

Prior to SAR assessment, the system is verified to 10% of the SAR measurement on the reference dipole at the time of calibration by the calibration facility. Full system validation status and result summary can be found in ANNEX A

Target and measurement SAR after Normalized (1W):

Measurement Date	Frequency (MHz)	Liquid Type (head/body)	Target SAR1g (W/kg)	Measured SAR1g (W/kg)	Normalized SAR1g (W/kg)	Deviation (%)
November24th,2015	835	head	9.65	0.0967	9.67	-0.10
November24th,2015	835	body	9.98	0.0999	9.99	0.10
November25th,2015	1800	head	38.44	0.3847	38.47	0.08
November25th,2015	1800	body	39.59	0.3955	39.55	0.15
November26th,2015	1900	head	39.52	0.4055	40.55	-2.56
November26th,2015	1900	body	42.88	0.4296	42.96	-0.09
November30th,2015	2600	head	56.32	0.5633	56.33	1.79
November30th,2015	2600	body	57.82	0.5777	57.77	1.47

Note: system check input power: 10mW

Liquid Verification

The dielectric parameters were checked prior to assessment using the HP85070C dielectric probe kit. The dielectric parameters measured are reported in each correspondent section.

KDB 865664 recommended Tissue Dielectric Parameters

The head and body tissue parameters given in this below table should be used to measure the SAR of transmitters operating in 100 MHz to 6 GHz frequency range. The tissue dielectric parameters of the tissue medium at the test frequency should be within the tolerance required in this document. The dielectric parameters should be linearly interpolated between the closest pair of target frequencies to determine the applicable dielectric parameters corresponding to the device test frequency.

The head tissue dielectric parameters recommended by IEEE Std 1528-2013 have been incorporated in the following table. These head parameters are derived from planar layer models simulating the highest expected SAR for the dielectric properties and tissue thickness variations in a human head. Other head and body tissue parameters that have not been specified in 1528 are derived from tissue dielectric parameters computed from the 4-Cole-Cole equations described above and extrapolated according to the head parameters specified in 1528.

Liquid Confirmation Result:

1. Measured Head liquid Properties

Date	Freq.(MHz)	Liquid Parameters	Measured	Target	Delta (%)	Limit ±(%)
November 24th,2015	835	Relative Permittivity (ϵ_r):	41.3	41.5	-0.48	5
		Conductivity (σ):	0.94	0.90	4.44	5
November 25th,2015	1800	Relative Permittivity (ϵ_r):	40.6	40.0	1.50	5
		Conductivity (σ):	1.38	1.40	-1.43	5
November 26th,2015	1900	Relative Permittivity (ϵ_r):	39.3	40.0	-1.75	5
		Conductivity (σ):	1.42	1.40	1.43	5
November 30th,2015	2600	Relative Permittivity (ϵ_r):	38.67	39.0	-0.85	5
		Conductivity (σ):	1.94	1.96	-1.02	5

2. Measured Body liquid Properties

Date	Freq.(MHz)	Liquid Parameters	Measured	Target	Delta (%)	Limit ±(%)
November 24th,2015	835	Relative Permittivity (ϵ_r):	55.22	55.20	0.04	5
		Conductivity (σ):	0.95	0.97	-2.06	5
November 25th,2015	1800	Relative Permittivity (ϵ_r):	53.24	53.3	-0.11	5
		Conductivity (σ):	1.48	1.52	-2.63	5
November 26th,2015	1900	Relative Permittivity (ϵ_r):	53.32	53.3	0.04	5
		Conductivity (σ):	1.49	1.52	-1.97	5
November 30th,2015	2600	Relative Permittivity (ϵ_r):	51.77	51.80	-0.06	5
		Conductivity (σ):	2.21	2.19	0.91	5

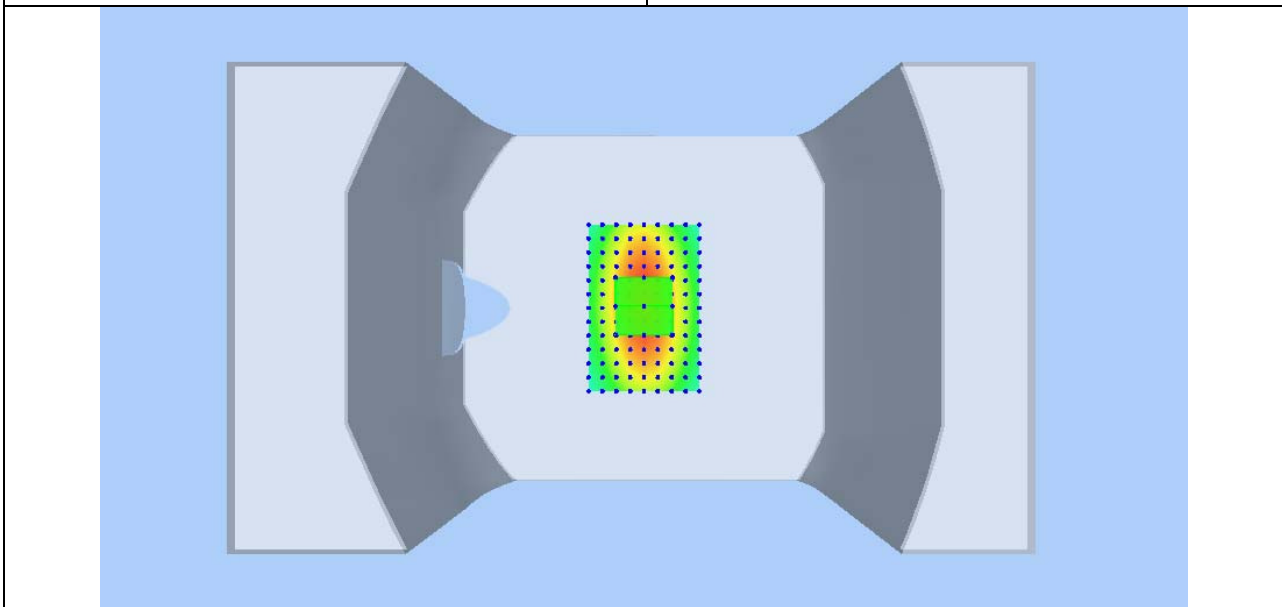
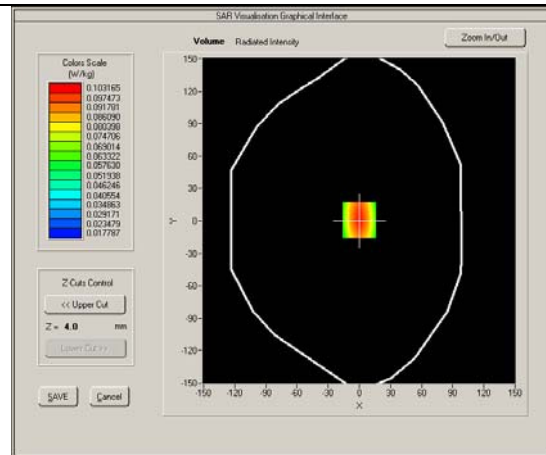
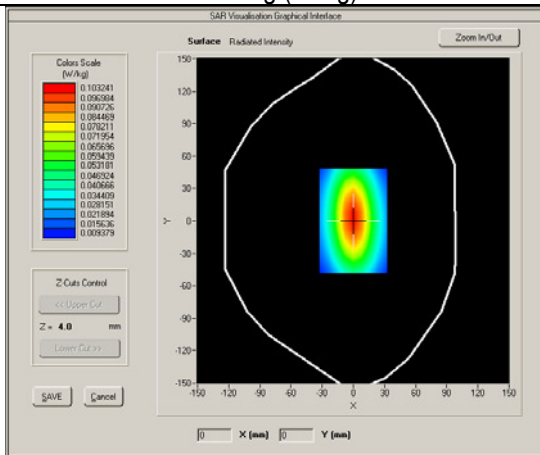
System Verification Plots

Product Description: Dipole

Model: SID835

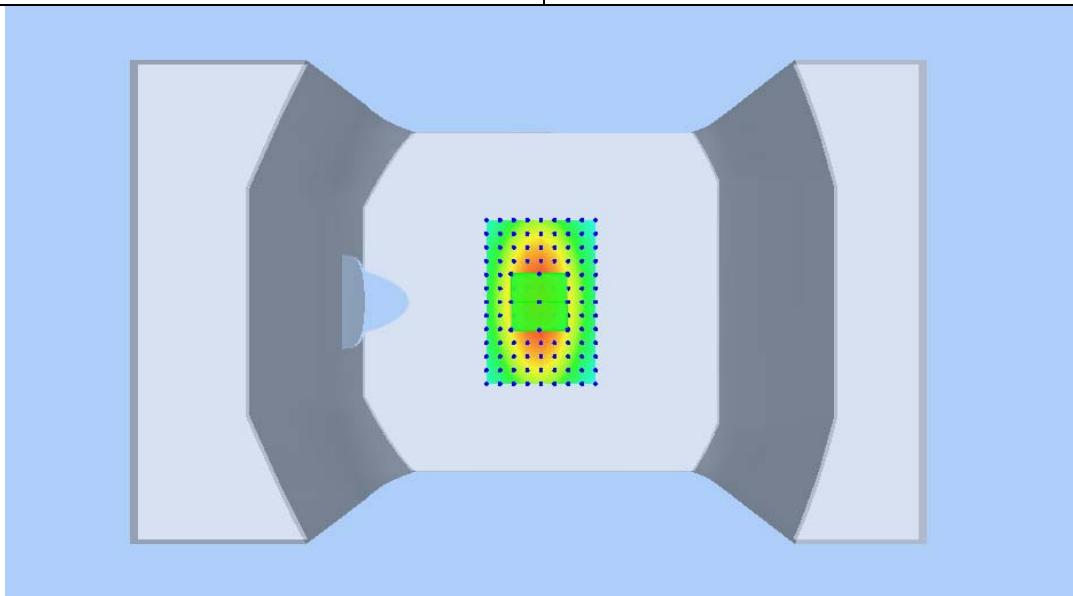
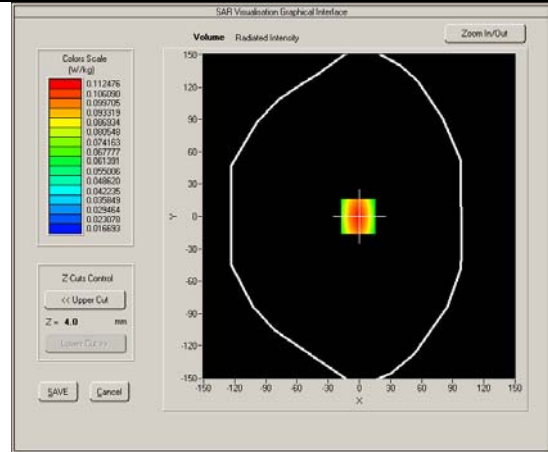
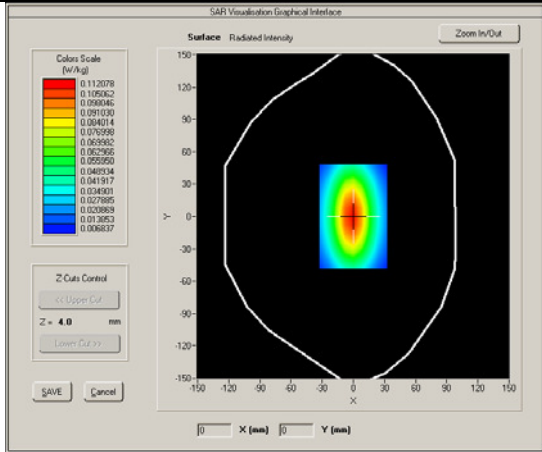
Test Date: November 24th,2015

Medium(liquid type)	HSL_835
Frequency (MHz)	835.000000
Relative permittivity (real part)	41.3
Conductivity (S/m)	0.94
Input power	10mW
E-Field Probe	SN 27/15 EPGO262
Crest factor	1.0
Conversion Factor	1.90
Sensor-surface	4mm
Area Scan	dx=8mm dy=8mm
Zoom Scan	5x5x7,dx=8mm dy=8mm dz=5mm
Variation (%)	-0.66000
SAR 10g (W/Kg)	0.064712
SAR 1g (W/Kg)	0.096703



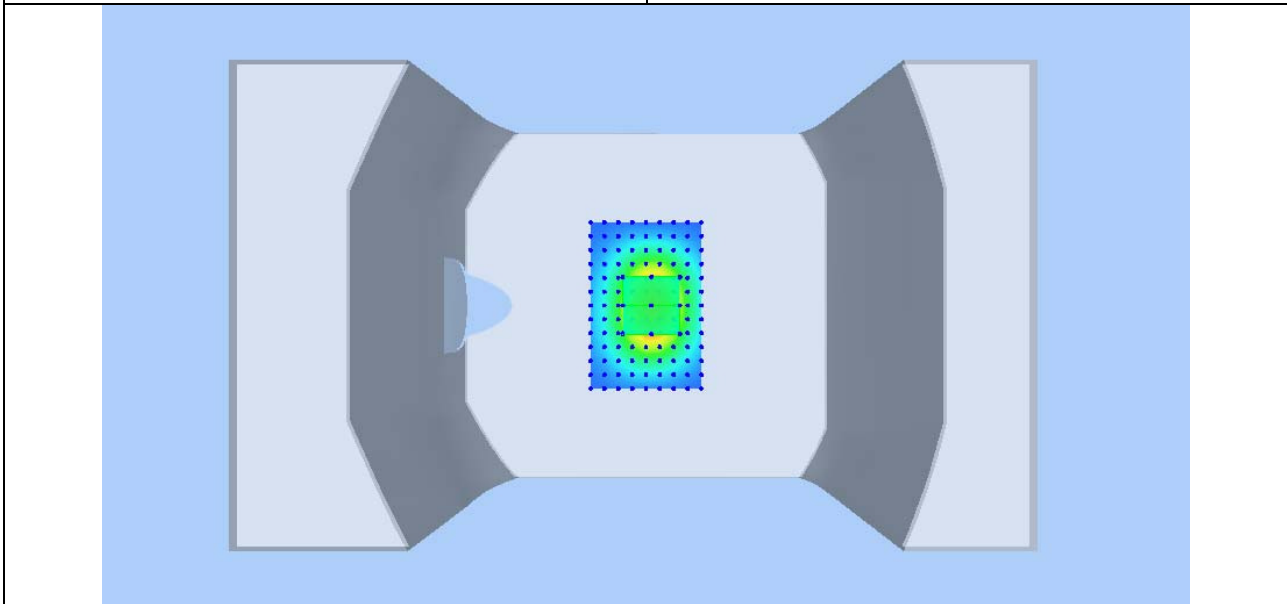
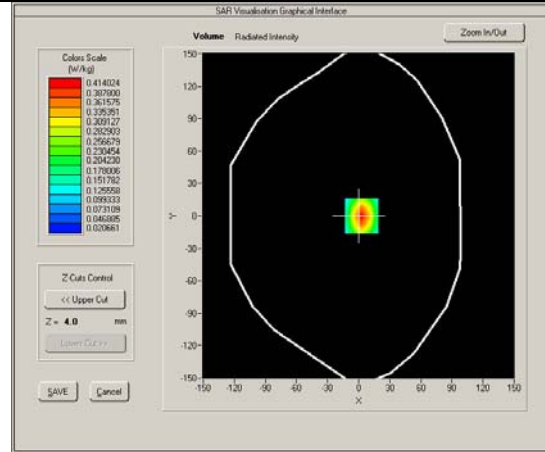
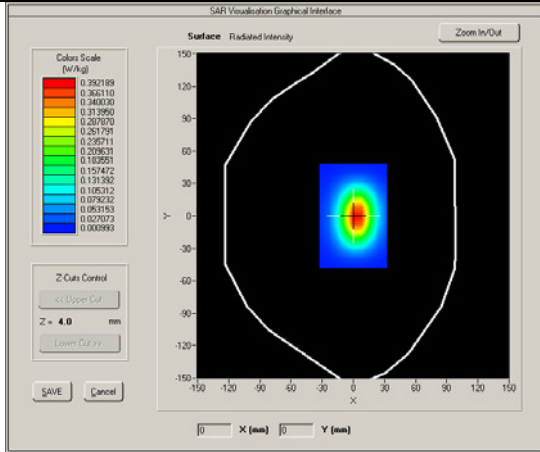
Product Description: Dipole
Model: SID835
Test Date: November 24th,2015

Medium(liquid type)	MSL_835
Frequency (MHz)	835.000000
Relative permittivity (real part)	55.22
Conductivity (S/m)	0.95
Input power	10mW
E-Field Probe	SN 27/15 EPGO262
Crest factor	1.0
Conversion Factor	1.97
Sensor-surface	4mm
Area Scan	dx=8mm dy=8mm
Zoom Scan	5x5x7,dx=8mm dy=8mm dz=5mm
Variation (%)	-0.49000
SAR 10g (W/Kg)	0.070246
SAR 1g (W/Kg)	0.099937



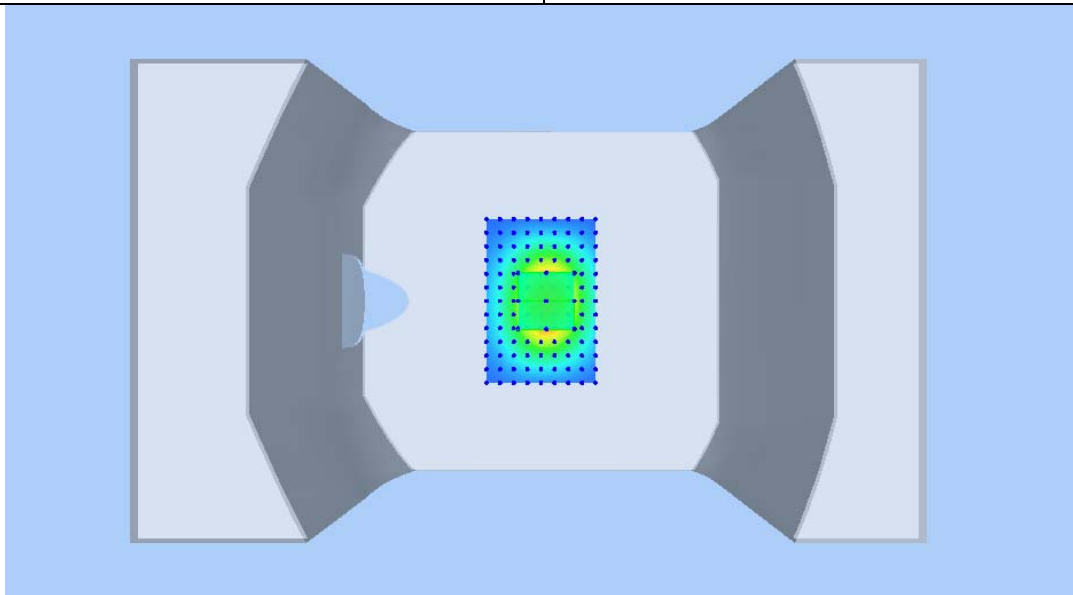
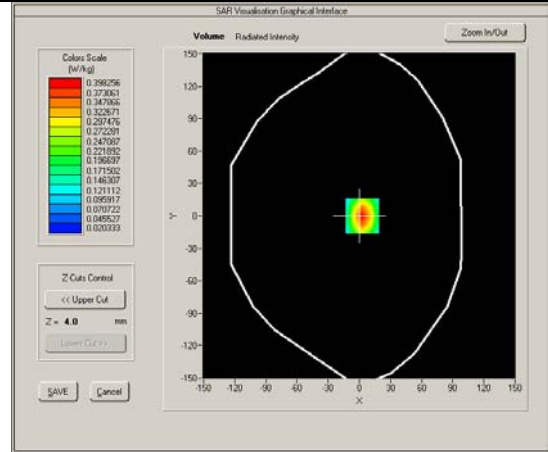
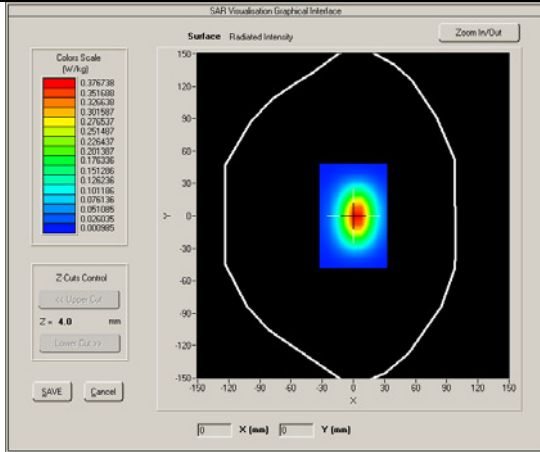
Product Description: Dipole
 Model: SID1800
 Test Date: November 25th,2015

Medium(liquid type)	HSL_1800
Frequency (MHz)	1800.000
Relative permittivity (real part)	40.6
Conductivity (S/m)	1.38
Input power	10mW
E-Field Probe	SN 27/15 EPGO262
Crest factor	1.0
Conversion Factor	2.01
Sensor-Surface	4mm
Area Scan	dx=8mm dy=8mm
Zoom Scan	5x5x7,dx=8mm dy=8mm dz=5mm
Variation (%)	-0.75000
SAR 10g (W/Kg)	0.194834
SAR 1g (W/Kg)	0.384712



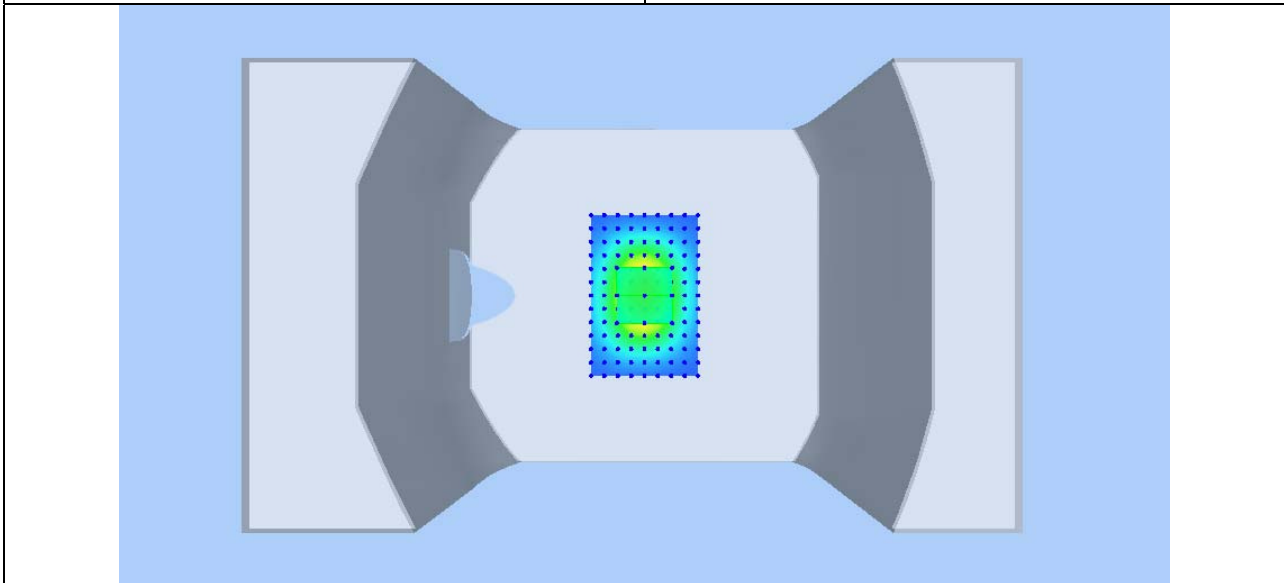
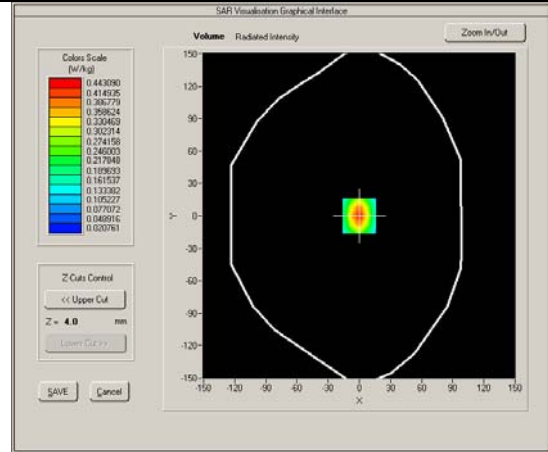
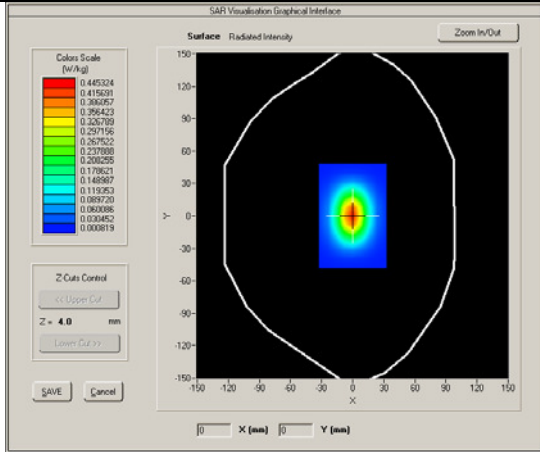
Product Description: Dipole
Model: SID1800
Test Date: November 25th,2015

Medium(liquid type)	MSL_1800
Frequency (MHz)	1800.000
Relative permittivity (real part)	53.24
Conductivity (S/m)	1.48
Input power	10mW
E-Field Probe	SN 27/15 EPGO262
Crest factor	1.0
Conversion Factor	2.05
Sensor-Surface	4mm
Area Scan	dx=8mm dy=8mm
Zoom Scan	5x5x7,dx=8mm dy=8mm dz=5mm
Variation (%)	-0.87000
SAR 10g (W/Kg)	0.141657
SAR 1g (W/Kg)	0.395509



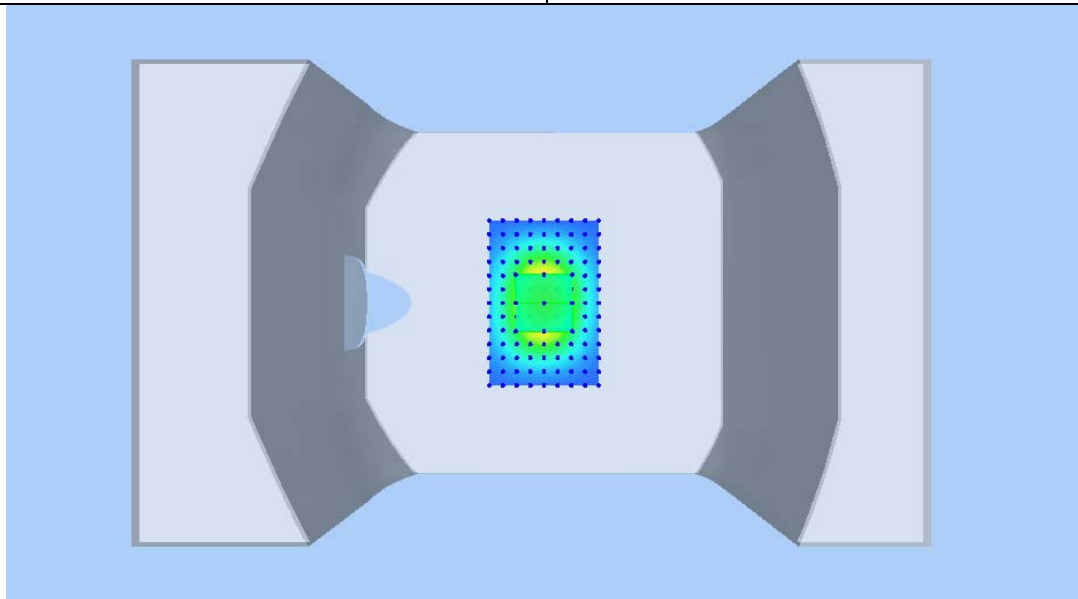
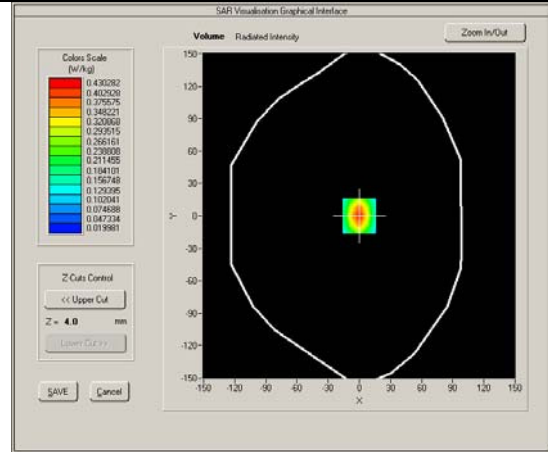
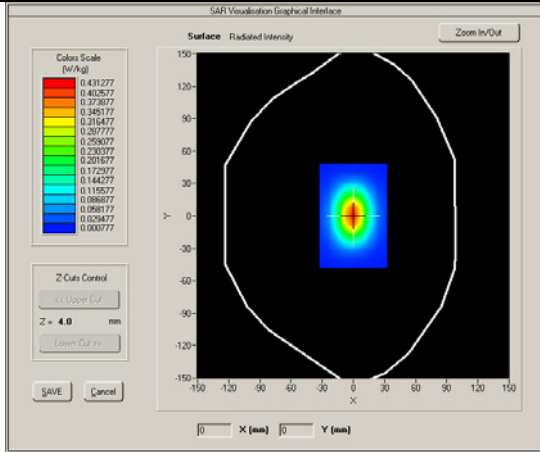
Product Description: Dipole
Model: SID1900
Test Date: November 26th,2015

Medium(liquid type)	HSL_1900
Frequency (MHz)	1900.000
Relative permittivity (real part)	39.3
Conductivity (S/m)	1.42
Input power	10mW
E-Field Probe	SN 27/15 EPGO262
Crest factor	1.0
Conversion Factor	2.26
Sensor-Surface	4mm
Area Scan	dx=8mm dy=8mm
Zoom Scan	5x5x7,dx=8mm dy=8mm dz=5mm
Variation (%)	-0.29000
SAR 10g (W/Kg)	0.214252
SAR 1g (W/Kg)	0.405534



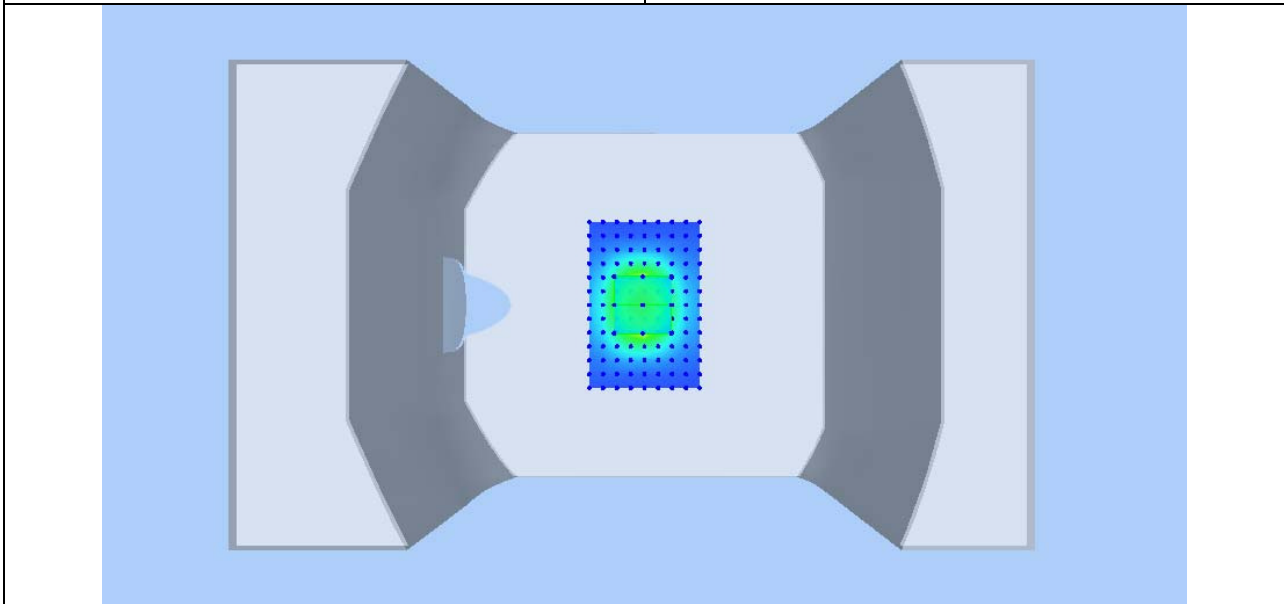
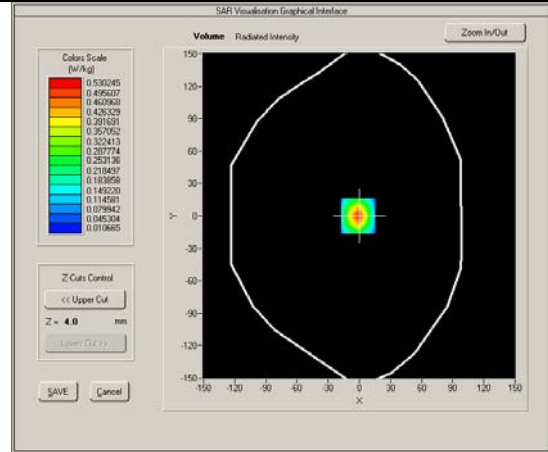
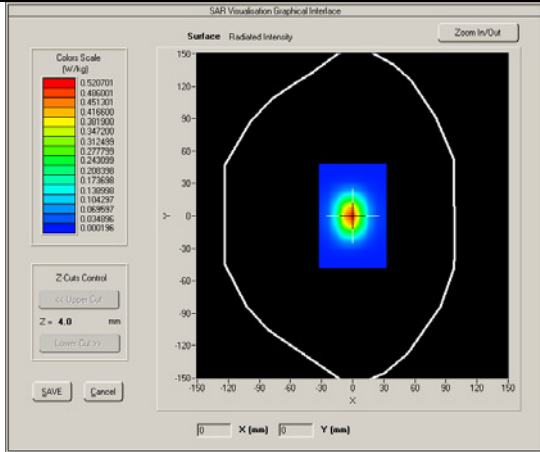
Product Description: Dipole
Model: SID1900
Test Date: November 26th,2015

Medium(liquid type)	MSL_1900
Frequency (MHz)	1900.000
Relative permittivity (real part)	53.32
Conductivity (S/m)	1.49
Input power	10mW
E-Field Probe	SN 27/15 EPGO262
Crest factor	1.0
Conversion Factor	2.32
Sensor-Surface	4mm
Area Scan	dx=8mm dy=8mm
Zoom Scan	5x5x7,dx=8mm dy=8mm dz=5mm
Variation (%)	-0.52000
SAR 10g (W/Kg)	0.230246
SAR 1g (W/Kg)	0.429611



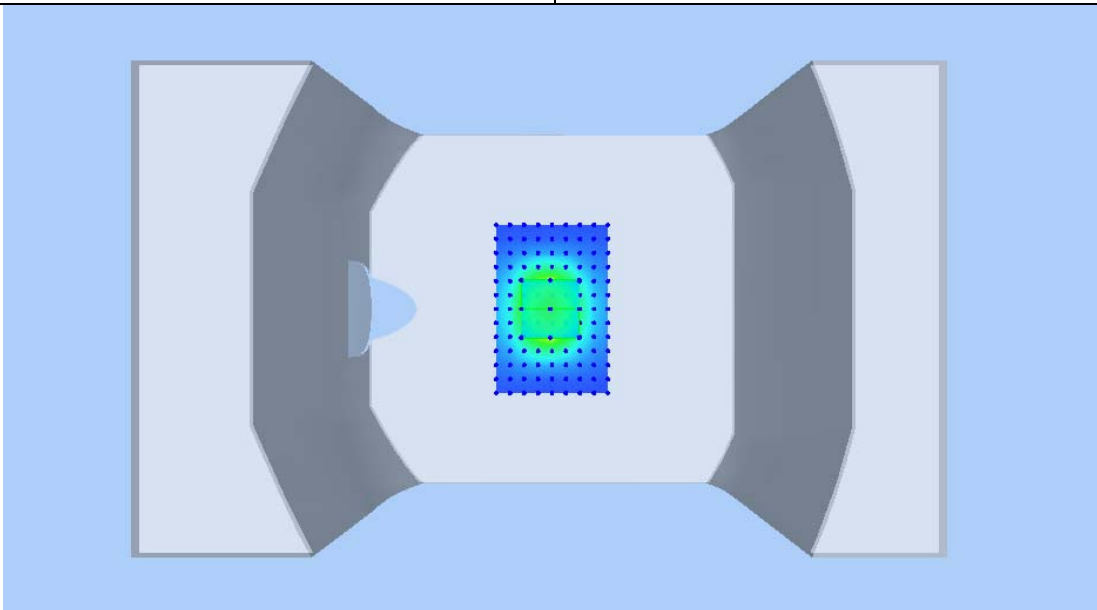
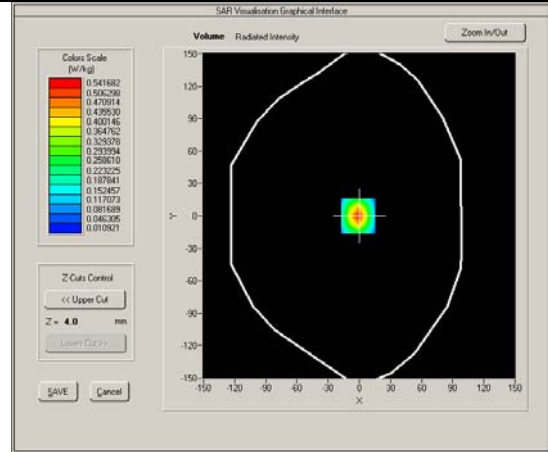
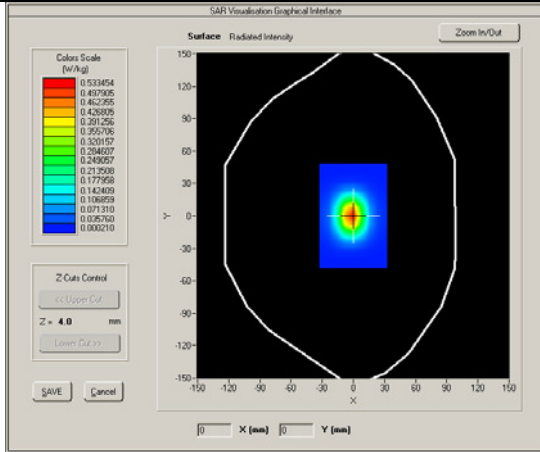
Product Description: Dipole
Model: SID2600
Test Date: November 30th, 2015

Medium (liquid type)	HSL_2600
Frequency (MHz)	2600.000
Relative permittivity (real part)	38.67
Conductivity (S/m)	1.94
Input power	10mW
E-Field Probe	SN 27/15 EPGO262
Crest factor	1.0
Conversion Factor	2.28
Sensor-Surface	4mm
Area Scan	dx=8mm dy=8mm
Zoom Scan	5x5x7, dx=8mm dy=8mm dz=5mm
Variation (%)	-0.51000
SAR 10g (W/Kg)	0.284213
SAR 1g (W/Kg)	0.563302



Product Description: Dipole
Model: SID2600
Test Date: November 30th,2015

Medium(liquid type)	MSL_2600
Frequency (MHz)	2600.000
Relative permittivity (real part)	51.77
Conductivity (S/m)	2.21
Input power	10mW
E-Field Probe	SN 27/15 EPGO262
Crest factor	1.0
Conversion Factor	2.34
Sensor-Surface	4mm
Area Scan	dx=8mm dy=8mm
Zoom Scan	5x5x7,dx=8mm dy=8mm dz=5mm
Variation (%)	-1.31000
SAR 10g (W/Kg)	0.242001
SAR 1g (W/Kg)	0.577761



7 UNCERTAINTY ASSESSMENT

The component of uncertainty may generally be categorized according to the methods used to evaluate them. The evaluation of uncertainty by the statistical analysis of a series of observations is termed a Type A evaluation of uncertainty. The evaluation of uncertainty by means other than the statistical analysis of a series of observation is termed a Type B evaluation of uncertainty. Each component of uncertainty, however evaluated, is represented by an estimated standard deviation, termed standard uncertainty, which is determined by the positive square root of the estimated variance

A Type A evaluation of standard uncertainty may be based on any valid statistical method for treating data. This includes calculating the standard deviation of the mean of a series of independent observations; using the method of least squares to fit a curve to the data in order to estimate the parameter of the curve and their standard deviations; or carrying out an analysis of variance in order to identify and quantify random effects in certain kinds of measurement.

A type B evaluation of standard uncertainty is typically based on scientific judgment using all of the relevant information available. These may include previous measurement data, experience and specification, data provided in calibration reports and uncertainties assigned to reference data taken from handbooks. Broadly speaking, the uncertainty is either obtained from an outdoor source or obtained from an assumed distribution, such as the normal distribution, rectangular or triangular distributions indicated in Table below :

Uncertainty Distribution	Normal	Rectangle	Triangular	U Shape
Multi-plying Factor ^(a)	1/k ^(b)	1 / $\sqrt{3}$	1 / $\sqrt{6}$	1 / $\sqrt{2}$

(a) standard uncertainty is determined as the product of the multiplying factor and the estimated range of variations in the measured quantity

(b) κ is the coverage factor

Standard Uncertainty for Assumed Distribution

The combined standard uncertainty of the measurement result represents the estimated standard deviation of the result. It is obtained by combining the individual standard uncertainties of both Type A and Type -sum-by taking the positive square root of the estimated variances.

Expanded uncertainty is a measure of uncertainty that defines an interval about the measurement result within which the measured value is confidently believed to lie. It is obtained by multiplying the combined standard uncertainty by a coverage factor. Typically, the coverage factor ranges from 2 to 3. Using a coverage factor allows the true value of a measured quantity to be specified with a defined probability within the specified uncertainty range. For purpose of this document, a coverage factor two is used, which corresponds to confidence interval of about 95 %.

The COMOSAR Uncertainty Budget is show in below table:

The following table includes the uncertainty table of the IEEE 1528 from 300MHz to 3GHz and KDB865664 to 6GHZ too, The values are determined by Satimo.

UNCERTAINTY FOR SYSTEM PERFORMANCE CHECK

Uncertainty Component	Tol. (± %)	Prob. Dist.	Div.	c _i (1 g)	c _i (10 g)	1 g u _i (± %)	10 g u _i (± %)	V _i
Measurement System								
Probe Calibration	5,8	N	1	1	1	5,8	5,8	∞
Axial Isotropy	3,5	R	√3	(1-cp) ^{1/2}	(1-cp) ^{1/2}	1,42887	1,42887	∞
Hemispherical Isotropy	5,9	R	√3	√Cp	√Cp	2,40866	2,40866	∞
Boundary Effect	1	R	√3	1	1	0,57735	0,57735	∞
Linearity	4,7	R	√3	1	1	2,71355	2,71355	∞
System Detection Limits	1	R	√3	1	1	0,57735	0,57735	∞
Readout Electronics	0,5	N	1	1	1	0,5	0,5	∞
Response Time	0	R	√3	1	1	0	0	∞
Integration Time	1,4	R	√3	1	1	0,80829	0,80829	∞
RF Ambient Conditions	3	R	√3	1	1	1,73205	1,73205	∞
Probe Positioner Mechanical Tolerance	1,4	R	√3	1	1	0,80829	0,80829	∞
Probe Positioning with respect to Phantom Shell	1,4	R	√3	1	1	0,80829	0,80829	∞
Extrapolation, interpolation and Integration Algorithms for Max. SAR Evaluation	2,3	R	√3	1	1	1,32791	1,32791	∞
Dipole								
Dipole Axis to Liquid Distance	2	N	√3	1	1	1,1547	1,1547	N-1
Input Power and SAR drift measurement	5	R	√3	1	1	2,88675	2,88675	∞
Phantom and Tissue Parameters								
Phantom Uncertainty (shape and thickness tolerances)	4	R	√3	1	1	2,3094	2,3094	∞
Liquid Conductivity - deviation from target values	5	R	√3	0,64	0,43	1,84752	1,2413	∞
Liquid Conductivity - measurement uncertainty	4	N	1	0,64	0,43	2,56	1,72	M
Liquid Permittivity - deviation from target values	5	R	√3	0,6	0,49	1,73205	1,41451	∞
Liquid Permittivity - measurement uncertainty	5	N	1	0,6	0,49	3	2,45	M
Combined Standard Uncertainty		RSS				9,6671	9,1645	
Expanded Uncertainty (95% CONFIDENCE INTERVAL)		k				19,3342	18,3290	

UNCERTAINTY EVALUATION FOR HANDSET SAR TEST

Uncertainty Component	Tol. (± %)	Prob. Dist.	Div.	c_i (1 g)	c_i (10 g)	1 g u_i (± %)	10 g u_i (± %)	v_i
Measurement System								
Probe Calibration	5,8	N	1	1	1	5,8	5,8	∞
Axial Isotropy	3,5	R	$\sqrt{3}$	$(1-c_p)^{1/2}$	$(1-c_p)^{1/2}$	1,43	1,43	∞
Hemispherical Isotropy	5,9	R	$\sqrt{3}$	$\sqrt{C_p}$	$\sqrt{C_p}$	2,41	2,41	∞
Boundary Effect	1	R	$\sqrt{3}$	1	1	0,58	0,58	∞
Linearity	4,7	R	$\sqrt{3}$	1	1	2,71	2,71	∞
System Detection Limits	1	R	$\sqrt{3}$	1	1	0,58	0,58	∞
Readout Electronics	0,5	N	1	1	1	0,50	0,50	∞
Response Time	0	R	$\sqrt{3}$	1	1	0,00	0,00	∞
Integration Time	1,4	R	$\sqrt{3}$	1	1	0,81	0,81	∞
RF Ambient Conditions	3	R	$\sqrt{3}$	1	1	1,73	1,73	∞
Probe Positioner Mechanical Tolerance	1,4	R	$\sqrt{3}$	1	1	0,81	0,81	∞
Probe Positioning with respect to Phantom Shell	1,4	R	$\sqrt{3}$	1	1	0,81	0,81	∞
Extrapolation, interpolation and Integration Algorithms for Max. SAR Evaluation	2,3	R	$\sqrt{3}$	1	1	1,33	1,33	∞
Test sample Related								
Test Sample Positioning	2,6	N	1	1	1	2,60	2,60	N-1
Device Holder Uncertainty	3	N	1	1	1	3,00	3,00	N-1
Output Power Variation - SAR drift measurement	5	R	$\sqrt{3}$	1	1	2,89	2,89	∞
Phantom and Tissue Parameters								
Phantom Uncertainty (shape and thickness tolerances)	4	R	$\sqrt{3}$	1	1	2,31	2,31	∞
Liquid Conductivity - deviation from target values	5	R	$\sqrt{3}$	0,64	0,43	1,85	1,24	∞
Liquid Conductivity - measurement uncertainty	4	N	1	0,64	0,43	2,56	1,72	M
Liquid Permittivity - deviation from target values	5	R	$\sqrt{3}$	0,6	0,49	1,73	1,41	∞
Liquid Permittivity - measurement uncertainty	5	N	1	0,6	0,49	3,00	2,45	M
Combined Standard Uncertainty		RSS				10,39	9,92	
Expanded Uncertainty (95% CONFIDENCE INTERVAL)		k				20,78	19,84	

8 TEST INSTRUMENT

TEST INSTRUMENTATION

Name of Equipment	Manufacturer	Type/Model	Serial Number	Calibration Date	Calibration Due
P C	Compaq	PV 3.06GHz	375052-AA1	N/A	N/A
Signal Generator	Agilent	8665B-008	3744A10293	05/15/2015	05/15/2016
MultiMeter	Keithley	MiltiMeter 2000	1259033	06/21/2015	06/21/2016
S-Parameter Network Analyzer	Agilent	8753ES	US39173518	08/04/2014	08/04/2015
Wireless Communication Test Set	R & S	CMU200	111078	07/22/2015	07/22/2016
Wideband Radio Communication Tester	R & S	CMW500	120906	03/29/2015	03/28/2016
Power Meter	HP	437B	3038A03648	05/17/2015	05/17/2016
E-field PROBE	MVG	SSE2	SN 27/15 EPGO262	07/09/2015	07/09/2016
DIPOLE 835	SATIMO	SID 835	SN 18/11 DIPC 150	06/24/2015	06/24/2016
DIPOLE 1800	SATIMO	SID 1800	SN 18/11 DIPF 152	07/09/2015	07/09/2016
DIPOLE 1900	SATIMO	SID 1900	SN 18/11 DIPG 153	06/25/2015	06/25/2016
DIPOLE 2600	SATIMO	SID 2600	SN 26/14 DIP 2G600-326	07/15/2015	07/15/2016
Communication Antenna	SATIMO	ANTA3	SN 20/11 ANTA 3	06/21/2015	06/20/2016
Laptop POSITIONING DEVICE	SATIMO	LSH15	SN 24/11 LSH15	N/A	N/A
e\POSITIONING DEVICE	SATIMO	MSH73	SN 24/11 MSH73	N/A	N/A
DUMMY PROBE	ANTENNESSA		DP41	N/A	N/A
SAM PHANTOM	SATIMO	SAM87	SN 24/11 SAM87	N/A	N/A
Elliptic Phantom	SATIMO	ELLI20	SN 20/11ELLI20	N/A	N/A
PHANTOM TABLE	SATIMO	N/A	N/A	N/A	N/A
6 AXIS ROBOT	KUKA	KR5	949272	N/A	N/A
high Power Solid State Amplifier (80MHz~1000MHz)	Instruments for Industry	CMC150	M631-0408	N/A	N/A
Medium Power Solid State Amplifier (0.8~4.2GHz)	Instruments for Industry	S41-25	M629-0408	N/A	N/A
Wave Tube Amplifier 4-8 GHz at 20Watt	Hughes Aircraft Company	1277H02F000	81	N/A	N/A

9 OUTPUT POWER VERIFICATION

Test Condition:

1. Conducted Measurement
EUT was set for low, mid, high channel with modulated mode and highest RF output power.
The base station simulator was connected to the antenna terminal.
2. Conducted Emissions Measurement Uncertainty
All test measurements carried out are traceable to national standards. The uncertainty of the measurement at a confidence level of approximately 95% (in the case where distributions are normal), with a coverage factor of 2, in the range 30MHz – 40GHz is ± 1.5 dB.
3. Environmental Conditions

Temperature	23°C
Relative Humidity	53%
Atmospheric Pressure	1019mbar
4. Test Date : November 24th,2015
Tested By : Wiky Jam

Test Procedures:

Mobile phone radio output power measurement

1. The transmitter output port was connected to base station emulator.
2. Establish communication link between emulator and EUT and set EUT to operate at maximum output power all the time.
3. Select lowest, middle, and highest channels for each band and different possible test mode.
4. Measure the conducted peak burst power and conducted average burst power from EUT antenna port.

Other radio output power measurement

The output power was measured using power meter at low, mid, and hi channels.

Source-based Time Averaged Burst Power Calculation:

For TDMA, the following duty cycle factor was used to calculate the source-based time average power

Number of Time slot	1	2	3	4
Duty Cycle	1:8	1:4	1:2.66	1:2
Duty cycle factor	-9.03 dB	-6.02 dB	-4.26 dB	-3.01 dB
Crest Factor	8	4	2.66	2

Remark: *Time slot duty cycle factor = $10 * \log (1 / \text{Time Slot Duty Cycle})$*

Source based time averaged power = Maximum burst averaged power (1 Uplink) – 9.03 dB

Source based time averaged power = Maximum burst averaged power (2 Uplink) – 6.02 dB

Source based time averaged power = Maximum burst averaged power (4 Uplink) – 3.01 dB

Test Result:

GSM:

Burst Average Power (dBm);								
Band	GSM850				PCS1900			
Channel	128	190	251	Tune up Power tolerant	512	661	810	Tune up Power tolerant
Frequency (MHz)	824.2	836.6	848.8	/	1850.2	1880	1909.8	/
GSM Voice (1 uplink),GMSK	31.91	31.83	31.72	31±1	29.61	29.59	29.42	29.5±1
GPRS Multi-Slot Class 8 (1 uplink),GMSK	31.90	31.82	31.71	31±1	29.60	29.58	29.41	29.5±1
GPRS Multi-Slot Class 10 (2 uplink) GMSK	31.23	31.24	31.17	31±1	28.81	28.83	28.84	28.5±1
GPRS Multi-Slot Class 12 (4 uplink) GMSK	28.61	28.53	28.39	28.5±1	25.63	25.71	25.88	25.5±1
EGPRS Multi-Slot Class 8 (1 uplink) GMSK MCS1 (1 uplink),GMSK	31.89	31.81	31.70	31±1	29.59	29.57	29.40	29.5±1
EGPRS Multi-Slot Class 10 (2 uplink) GMSK MCS1 (2 uplink),GMSK	31.27	31.21	31.12	31±1	28.82	28.85	28.83	28.5±1
EGPRS Multi-Slot Class 12 (4 uplink) GMSK MCS1 (4 uplink),GMSK	28.58	28.54	28.51	28.5±1	25.84	25.83	25.91	25.5±1
EGPRS Multi-Slot Class 8 (1 uplink) 8PSK MCS5 (1 uplink),GMSK	27.04	27.05	26.89	26.5±1	26.18	26.02	26.11	26±1
EGPRS Multi-Slot Class 10 (2 uplink) 8PSK MCS5 (2 uplink),GMSK	26.09	26.08	25.92	25.5±1	25.35	25.21	25.25	25.5±1
EGPRS Multi-Slot Class 12 (4 uplink) 8PSK MCS5 (4 uplink),GMSK	22.04	22.11	21.89	22±1	22.26	22.17	22.18	22±1

Remark :

GPRS, CS1 coding scheme.
EGPRS, MCS1 coding scheme.
EGPRS, MCS5 coding scheme.
Multi-Slot Class 8 , Support Max 4 downlink, 1 uplink , 5 working link
Multi-Slot Class 10 , Support Max 4 downlink, 2 uplink , 5 working link
Multi-Slot Class 12 , Support Max 4 downlink, 4 uplink , 5 working link

Source Based time Average Power (dBm)								
Band	GSM850				PCS1900			
Channel	128	190	251	Time Average factor	512	661	810	Time Average factor
Frequency (MHz)	824.2	836.6	848.8	/	1850.2	1880	1909.8	/
GSM Voice (1 uplink),GMSK	22.88	22.80	22.69	-9.03	20.58	20.56	20.39	-9.03
GPRS Multi-Slot Class 8 (1 uplink),GMSK	22.87	22.79	22.68	-9.03	20.57	20.55	20.38	-9.03
GPRS Multi-Slot Class 10 (2 uplink),GMSK	25.21	25.22	25.15	-6.02	22.79	22.81	22.82	-6.02
GPRS Multi-Slot Class 12 (4 uplink),GMSK	25.60	25.52	25.38	-3.01	22.62	22.70	22.87	-3.01
EGPRS Multi-Slot Class 8 (1 uplink) GMSK	22.86	22.78	22.67	-9.03	20.56	20.54	20.37	-9.03
EGPRS Multi-Slot Class 10 (2 uplink) GMSK	25.25	25.19	25.10	-6.02	22.80	22.83	22.81	-6.02
EGPRS Multi-Slot Class 12 (4 uplink) GMSK	25.57	25.53	25.50	-3.01	22.83	22.82	22.90	-3.01
EGPRS Multi-Slot Class 8 (1 uplink) GMSK MCS5 (1 uplink),GMSK	18.01	18.02	17.86	-9.03	17.15	16.99	17.08	-9.03
EGPRS Multi-Slot Class 10 (2 uplink) GMSK MCS5 (2 uplink),GMSK	20.07	20.06	19.90	-6.02	19.33	19.19	19.23	-6.02
EGPRS Multi-Slot Class 12 (4 uplink) GMSK MCS5 (4 uplink),GMSK	19.03	19.10	18.88	-3.01	19.25	19.16	19.17	-3.01
Remark : Time average factor = 1 uplink , $10 \cdot \log(1/8) = -9.03\text{dB}$, 2 uplink , $10 \cdot \log(2/8) = -6.02\text{dB}$, 4 uplink , $10 \cdot \log(4/8) = -3.01\text{dB}$ Source based time average power = Burst Average power + Time Average factor								

Note: 1. due to the source based time average power; Body SAR was performed at EGPRS Multi-slot class 12.

WCDMA BAND V

Band/ Time Slot configuration	Channel	Frequency	Average power (dBm)	Tune up Power tolerant
RMC 12.2kbps	4132	826.4	23.08	23±1
	4175	835	23.01	23±1
	4233	846.6	22.97	23±1
HSDPA Subtest1	4132	826.4	22.01	22±1
	4175	835	21.94	22±1
	4233	846.6	21.89	22±1
HSDPA Subtest2	4132	826.4	22.34	22±1
	4175	835	22.25	22±1
	4233	846.6	22.21	22±1
HSDPA Subtest3	4132	826.4	21.98	22±1
	4175	835	21.91	22±1
	4233	846.6	21.87	22±1
HSDPA Subtest4	4132	826.4	21.78	22±1
	4175	835	21.74	22±1
	4233	846.6	21.69	22±1
HSUPA Subtest1	4132	826.4	22.03	22±1
	4175	835	21.97	22±1
	4233	846.6	21.91	22±1
HSUPA Subtest2	4132	826.4	21.98	22±1
	4175	835	21.91	22±1
	4233	846.6	21.87	22±1
HSUPA Subtest3	4132	826.4	21.54	22±1
	4175	835	21.48	22±1
	4233	846.6	21.44	22±1
HSUPA Subtest4	4132	826.4	21.68	22±1
	4175	835	21.62	22±1
	4233	846.6	21.59	22±1
HSUPA Subtest5	4132	826.4	22.25	22±1
	4175	835	22.21	22±1
	4233	846.6	22.17	22±1

Note: 1. Due to the maximum SAR for 12.2kbps RMC < 75% of the SAR limit, SAR was performed at RMC 12.2kbps.

WCDMA Band II :

Band/ Time Slot configuration	Channel	Frequency	Average power (dBm)	Tune up Power tolerant
RMC 12.2kbps	9262	1852.4	23.96	23±1
	9400	1880	23.39	23±1
	9538	1907.6	23.65	23±1
HSDPA Subtest1	9262	1852.4	22.45	22±1
	9400	1880	22.21	22±1
	9538	1907.6	22.15	22±1
HSDPA Subtest2	9262	1852.4	22.35	22±1
	9400	1880	22.31	22±1
	9538	1907.6	22.18	22±1
HSDPA Subtest3	9262	1852.4	22.57	22±1
	9400	1880	22.49	22±1
	9538	1907.6	22.36	22±1
HSDPA Subtest4	9262	1852.4	22.18	22±1
	9400	1880	22.12	22±1
	9538	1907.6	22.05	22±1
HSUPA Subtest1	9262	1852.4	22.13	22±1
	9400	1880	22.08	22±1
	9538	1907.6	21.96	22±1
HSUPA Subtest2	9262	1852.4	22.37	22±1
	9400	1880	22.31	22±1
	9538	1907.6	22.22	22±1
HSUPA Subtest3	9262	1852.4	22.15	22±1
	9400	1880	22.02	22±1
	9538	1907.6	21.89	22±1
HSUPA Subtest4	9262	1852.4	22.21	22±1
	9400	1880	22.03	22±1
	9538	1907.6	21.93	22±1
HSUPA Subtest5	9262	1852.4	22.45	22±1
	9400	1880	22.32	22±1
	9538	1907.6	22.16	22±1

Note: 1. Due to the maximum SAR for 12.2kbps RMC < 75% of the SAR limit, SAR was performed at RMC 12.2kbps.

LTE Power Reduction

The following tests were conducted according to the test requirements outlined in section 6.2 of the 3GPP TS36.101 specification.

The allowed Maximum Power Reduction (MPR) for the maximum output power due to higher order modulation and transmit bandwidth configuration (resource blocks) is specified in Table 6.2.3-1 of the 3GPP TS36.101.

Table 6.2.3-1: Maximum Power Reduction (MPR) for Power Class 3

Modulation	Channel bandwidth / Transmission bandwidth (RB)						MPR (dB)
	1.4 MHz	3.0 MHz	5 MHz	10 MHz	15 MHz	20 MHz	
QPSK	> 5	> 4	> 8	> 12	> 16	> 18	≤ 1
16 QAM	≤ 5	≤ 4	≤ 8	≤ 12	≤ 16	≤ 18	≤ 1
16 QAM	> 5	> 4	> 8	> 12	> 16	> 18	≤ 2

The allowed A-MPR values specified below in Table 6.2.4.-1 of 3GPP TS36.101 are in addition to the allowed MPR requirements. All the measurements below were performed with A-MPR disabled, by using Network Signalling Value of "NS_01".

Table 6.2.4-1: Additional Maximum Power Reduction (A-MPR)

Network Signalling value	Requirements (sub-clause)	E-UTRA Band	Channel bandwidth (MHz)	Resources Blocks (N_{RB})	A-MPR (dB)
NS_01	6.6.2.1.1	Table 5.5-1	1.4, 3, 5, 10, 15, 20	Table 5.6-1	NA
NS_03	6.6.2.2.1	2, 4, 10, 23, 25, 35, 36	3	>5	≤ 1
			5	>6	≤ 1
			10	>6	≤ 1
			15	>8	≤ 1
			20	>10	≤ 1
NS_04	6.6.2.2.2	41	5	>6	≤ 1
			10, 15, 20	See Table 6.2.4-4	
NS_05	6.6.3.3.1	1	10, 15, 20	≥ 50	≤ 1
NS_06	6.6.2.2.3	12, 13, 14, 17	1.4, 3, 5, 10	Table 5.6-1	n/a
NS_07	6.6.2.2.3	13	10	Table 6.2.4-2	Table 6.2.4-2
	6.6.3.3.2				
NS_08	6.6.3.3.3	19	10, 15	> 44	≤ 3
NS_09	6.6.3.3.4	21	10, 15	> 40	≤ 1
				> 55	≤ 2
NS_10		20	15, 20	Table 6.2.4-3	Table 6.2.4-3
NS_11	6.6.2.2.1	23 ¹	1.4, 3, 5, 10	Table 6.2.4-5	Table 6.2.4-5
..					
NS_32	-	-	-	-	-

Note 1: Applies to the lower block of Band 23, i.e. a carrier placed in the 2000-2010 MHz region.

LTE Band 2:

BW (MHz)	Ch	Freq. (MHz)	Mode	UL RB Allocation	UL RB Offset	MPR	Average power (dBm)	Tune up Power tolerant
20MHz	18700	1860.0	QPSK	1	0	0	23.53	23 ± 1
				1	49	0	23.35	23 ± 1
				1	99	0	23.22	23 ± 1
				50	0	1	22.41	23 ± 1
				50	24	1	22.34	23 ± 1
				50	49	1	22.27	23 ± 1
				100	0	1	22.35	23 ± 1
			16QAM	1	0	1	22.81	22 ± 1
				1	49	1	22.69	22 ± 1
				1	99	1	22.66	22 ± 1
				50	0	2	22.13	22 ± 1
				50	24	2	22.05	22 ± 1
				50	49	2	21.84	22 ± 1
				100	0	2	21.35	22 ± 1
	18900	1880.0	QPSK	1	0	0	23.31	23 ± 1
				1	49	0	23.18	23 ± 1
				1	99	0	23.19	23 ± 1
				50	0	1	22.27	23 ± 1
				50	24	1	22.23	23 ± 1
				50	49	1	22.19	23 ± 1
				100	0	1	22.20	23 ± 1
			16QAM	1	0	1	22.73	22 ± 1
				1	49	1	22.58	22 ± 1
				1	99	1	22.51	22 ± 1
				50	0	2	22.24	22 ± 1
				50	24	2	22.19	22 ± 1
				50	49	2	22.12	22 ± 1
				100	0	2	21.25	22 ± 1
	19100	1900.0	QPSK	1	0	0	23.33	23 ± 1
				1	49	0	23.32	23 ± 1
1				99	0	23.48	23 ± 1	
50				0	1	22.17	23 ± 1	
50				24	1	22.21	23 ± 1	
50				49	1	22.28	23 ± 1	
100				0	1	22.22	23 ± 1	
16QAM			1	0	1	22.16	22 ± 1	
			1	49	1	22.17	22 ± 1	
			1	99	1	22.29	22 ± 1	
			50	0	2	21.75	22 ± 1	
			50	24	2	21.79	22 ± 1	
			50	49	2	21.86	22 ± 1	
			100	0	2	21.24	22 ± 1	

BW (MHz)	Ch	Freq. (MHz)	Mode	UL RB Allocation	UL RB Offset	MPR	Average power (dBm)	Tune up Power tolerant
15MHz	18675	1857.5	QPSK	1	0	0	23.65	23 ± 1
				1	37	0	23.55	23 ± 1
				1	74	0	23.39	23 ± 1
				36	0	1	22.65	23 ± 1
				36	16	1	22.52	23 ± 1
				36	35	1	22.47	23 ± 1
				75	0	1	22.56	23 ± 1
			16QAM	1	0	1	22.35	22 ± 1
				1	37	1	22.26	22 ± 1
				1	74	1	22.18	22 ± 1
				36	0	2	21.87	22 ± 1
				36	16	2	21.65	22 ± 1
				36	35	2	21.54	22 ± 1
				75	0	2	21.50	22 ± 1
	18900	1880.0	QPSK	1	0	0	23.23	23 ± 1
				1	37	0	23.22	23 ± 1
				1	74	0	23.25	23 ± 1
				36	0	1	22.30	23 ± 1
				36	16	1	22.33	23 ± 1
				36	35	1	22.32	23 ± 1
				75	0	1	22.33	23 ± 1
			16QAM	1	0	1	22.52	22 ± 1
				1	37	1	22.41	22 ± 1
				1	74	1	22.33	22 ± 1
				36	0	2	21.86	22 ± 1
				36	16	2	21.74	22 ± 1
				36	35	2	21.69	22 ± 1
				75	0	2	21.29	22 ± 1
	19125	1902.5	QPSK	1	0	0	23.23	23 ± 1
				1	37	0	23.21	23 ± 1
1				74	0	23.47	23 ± 1	
36				0	1	22.33	23 ± 1	
36				16	1	22.38	23 ± 1	
36				35	1	22.43	23 ± 1	
75				0	1	22.37	23 ± 1	
16QAM			1	0	1	22.63	22 ± 1	
			1	37	1	22.70	22 ± 1	
			1	74	1	22.75	22 ± 1	
			36	0	2	21.65	22 ± 1	
			36	16	2	21.67	22 ± 1	
			36	35	2	21.74	22 ± 1	
			75	0	2	21.37	22 ± 1	

BW (MHz)	Ch	Freq. (MHz)	Mode	UL RB Allocation	UL RB Offset	MPR	Average power (dBm)	Tune up Power tolerant
10MHz	18650	1855	QPSK	1	0	0	23.56	23 ± 1
				1	24	0	23.55	23 ± 1
				1	49	0	23.37	23 ± 1
				25	0	1	22.47	23 ± 1
				25	12	1	22.45	23 ± 1
				25	24	1	22.42	23 ± 1
				50	0	1	22.43	23 ± 1
			16QAM	1	0	1	22.89	22 ± 1
				1	24	1	22.88	22 ± 1
				1	49	1	22.79	22 ± 1
				25	0	2	21.83	22 ± 1
				25	12	2	21.76	22 ± 1
				25	24	2	21.65	22 ± 1
				50	0	2	21.43	22 ± 1
	18900	1880.0	QPSK	1	0	0	23.35	23 ± 1
				1	24	0	23.33	23 ± 1
				1	49	0	23.30	23 ± 1
				25	0	1	22.25	23 ± 1
				25	12	1	22.23	23 ± 1
				25	24	1	22.22	23 ± 1
				50	0	1	22.24	23 ± 1
			16QAM	1	0	1	22.13	22 ± 1
				1	24	1	22.09	22 ± 1
				1	49	1	22.03	22 ± 1
				25	0	2	21.69	22 ± 1
				25	12	2	21.54	22 ± 1
				25	24	2	21.42	22 ± 1
				50	0	2	21.29	22 ± 1
	19150	1905	QPSK	1	0	0	23.32	23 ± 1
				1	24	0	23.40	23 ± 1
1				49	0	23.51	23 ± 1	
25				0	1	22.26	23 ± 1	
25				12	1	22.29	23 ± 1	
25				24	1	22.32	23 ± 1	
50				0	1	22.29	23 ± 1	
16QAM			1	0	1	22.23	22 ± 1	
			1	24	1	22.28	22 ± 1	
			1	49	1	22.31	22 ± 1	
			25	0	2	21.59	22 ± 1	
			25	12	2	21.54	22 ± 1	
			25	24	2	21.46	22 ± 1	
			50	0	2	21.35	22 ± 1	

BW (MHz)	Ch	Freq. (MHz)	Mode	UL RB Allocation	UL RB Offset	MPR	Average power (dBm)	Tune up Power tolerant
5MHz	18625	1852.5	QPSK	1	0	0	23.53	23 ± 1
				1	12	0	23.54	23 ± 1
				1	24	0	23.47	23 ± 1
				12	0	1	22.51	23 ± 1
				12	6	1	22.49	23 ± 1
				12	11	1	22.48	23 ± 1
				25	0	1	22.44	23 ± 1
			16QAM	1	0	1	22.77	22 ± 1
				1	12	1	22.76	22 ± 1
				1	24	1	22.69	22 ± 1
				12	0	2	21.84	22 ± 1
				12	6	2	21.83	22 ± 1
				12	11	2	21.77	22 ± 1
				25	0	2	21.40	22 ± 1
	18900	1880.0	QPSK	1	0	0	23.19	23 ± 1
				1	12	0	23.22	23 ± 1
				1	24	0	23.16	23 ± 1
				12	0	1	22.28	23 ± 1
				12	6	1	22.26	23 ± 1
				12	11	1	22.24	23 ± 1
				25	0	1	22.21	23 ± 1
			16QAM	1	0	1	22.26	22 ± 1
				1	12	1	22.24	22 ± 1
				1	24	1	22.15	22 ± 1
				12	0	2	21.65	22 ± 1
				12	6	2	21.63	22 ± 1
				12	11	2	21.52	22 ± 1
				25	0	2	21.27	22 ± 1
	19175	1907.5	QPSK	1	0	0	23.33	23 ± 1
				1	12	0	23.38	23 ± 1
1				24	0	23.39	23 ± 1	
12				0	1	22.36	23 ± 1	
12				6	1	22.39	23 ± 1	
12				11	1	22.40	23 ± 1	
25				0	1	22.32	23 ± 1	
16QAM			1	0	1	22.23	22 ± 1	
			1	12	1	22.25	22 ± 1	
			1	24	1	22.24	22 ± 1	
			12	0	2	21.74	22 ± 1	
			12	6	2	21.72	22 ± 1	
			12	11	2	21.68	22 ± 1	
			25	0	2	21.36	22 ± 1	

BW (MHz)	Ch	Freq. (MHz)	Mode	UL RB Allocation	UL RB Offset	MPR	Average power (dBm)	Tune up Power tolerant
3MHz	18625	1852.5	QPSK	1	0	0	23.55	23 ± 1
				1	7	0	23.59	23 ± 1
				1	14	0	23.52	23 ± 1
				8	0	1	22.48	23 ± 1
				8	4	1	22.46	23 ± 1
				8	7	1	22.47	23 ± 1
				15	0	1	22.48	23 ± 1
			16QAM	1	0	1	22.07	22 ± 1
				1	7	1	22.13	22 ± 1
				1	14	1	22.11	22 ± 1
				8	0	2	21.58	22 ± 1
				8	4	2	21.56	22 ± 1
				8	7	2	21.55	22 ± 1
				15	0	2	21.38	22 ± 1
	18900	1880.0	QPSK	1	0	0	23.06	23 ± 1
				1	7	0	23.15	23 ± 1
				1	14	0	23.11	23 ± 1
				8	0	1	22.21	23 ± 1
				8	4	1	22.19	23 ± 1
				8	7	1	22.21	23 ± 1
				15	0	1	22.23	23 ± 1
			16QAM	1	0	1	22.63	22 ± 1
				1	7	1	22.65	22 ± 1
				1	14	1	22.54	22 ± 1
				8	0	2	21.68	22 ± 1
				8	4	2	21.64	22 ± 1
				8	7	2	21.52	22 ± 1
				15	0	2	21.35	22 ± 1
	19175	1907.5	QPSK	1	0	0	23.37	23 ± 1
				1	7	0	23.47	23 ± 1
1				14	0	23.49	23 ± 1	
8				0	1	22.35	23 ± 1	
8				4	1	22.34	23 ± 1	
8				7	1	22.35	23 ± 1	
15				0	1	22.37	23 ± 1	
16QAM			1	0	1	22.13	22 ± 1	
			1	7	1	22.16	22 ± 1	
			1	14	1	22.18	22 ± 1	
			8	0	2	21.56	22 ± 1	
			8	4	2	21.52	22 ± 1	
			8	7	2	21.41	22 ± 1	
			15	0	2	21.28	22 ± 1	

BW (MHz)	Ch	Freq. (MHz)	Mode	UL RB Allocation	UL RB Offset	MPR	Average power (dBm)	Tune up Power tolerant
1.4MHz	18607	1850.7	QPSK	1	0	0	23.45	23 ± 1
				1	2	0	23.52	23 ± 1
				1	5	0	23.51	23 ± 1
				3	0	0	23.47	23 ± 1
				3	1	0	23.44	23 ± 1
				3	2	0	23.46	23 ± 1
			6	0	1	22.55	23 ± 1	
			16QAM	1	0	1	22.07	22 ± 1
				1	2	1	22.12	22 ± 1
				1	5	1	22.09	22 ± 1
				3	0	1	21.79	22 ± 1
				3	1	1	21.76	22 ± 1
	3	2		1	21.66	22 ± 1		
	6	0	2	21.34	22 ± 1			
	18900	1880.0	QPSK	1	0	0	23.27	23 ± 1
				1	2	0	23.31	23 ± 1
				1	5	0	23.27	23 ± 1
				3	0	0	23.33	23 ± 1
				3	1	0	23.32	23 ± 1
				3	2	0	23.33	23 ± 1
			6	0	1	22.19	23 ± 1	
			16QAM	1	0	1	22.06	22 ± 1
				1	2	1	22.08	22 ± 1
				1	5	1	22.05	22 ± 1
				3	0	1	21.65	22 ± 1
				3	1	1	21.63	22 ± 1
	3	2		1	21.58	22 ± 1		
6	0	2	21.17	22 ± 1				
19193	1909.3	QPSK	1	0	0	23.46	23 ± 1	
			1	2	0	23.53	23 ± 1	
			1	5	0	23.51	23 ± 1	
			3	0	0	23.33	23 ± 1	
			3	1	0	23.34	23 ± 1	
			3	2	0	23.35	23 ± 1	
		6	0	1	22.44	23 ± 1		
		16QAM	1	0	1	22.27	22 ± 1	
			1	2	1	22.39	22 ± 1	
			1	5	1	22.31	22 ± 1	
			3	0	1	21.94	22 ± 1	
			3	1	1	21.85	22 ± 1	
3	2		1	21.79	22 ± 1			
6	0	2	21.14	22 ± 1				

LTE Band 4:

BW (MHz)	Ch	Freq. (MHz)	Mode	UL RB Allocation	UL RB Offset	MPR	Average power (dBm)	Tune up Power tolerant
20MHz	20050	1720.0	QPSK	1	0	0	23.33	23 ± 1
				1	49	0	23.18	23 ± 1
				1	99	0	23.25	23 ± 1
				50	0	1	22.18	23 ± 1
				50	24	1	22.17	23 ± 1
				50	49	1	22.19	23 ± 1
			16QAM	100	0	1	22.19	23 ± 1
				1	0	1	22.65	22 ± 1
				1	49	1	22.48	22 ± 1
				1	99	1	22.63	22 ± 1
				50	0	2	21.79	22 ± 1
				50	24	2	21.76	22 ± 1
	20175	1732.5	QPSK	50	49	2	21.67	22 ± 1
				100	0	2	21.17	22 ± 1
				1	0	0	23.37	23 ± 1
				1	49	0	23.39	23 ± 1
				1	99	0	23.41	23 ± 1
				50	0	1	22.24	23 ± 1
			16QAM	50	24	1	22.26	23 ± 1
				50	49	1	22.29	23 ± 1
				100	0	1	22.28	23 ± 1
				1	0	1	22.21	22 ± 1
				1	49	1	22.25	22 ± 1
				1	99	1	22.28	22 ± 1
	20300	1745.0	QPSK	50	0	2	21.55	22 ± 1
				50	24	2	21.54	22 ± 1
				50	49	2	21.48	22 ± 1
				100	0	2	21.27	22 ± 1
				1	0	0	23.30	23 ± 1
				1	49	0	23.25	23 ± 1
			16QAM	1	99	0	23.31	23 ± 1
				50	0	1	22.24	23 ± 1
				50	24	1	22.23	23 ± 1
				50	49	1	22.22	23 ± 1
				100	0	1	22.23	23 ± 1
				1	0	1	22.68	22 ± 1
16QAM	1	49	1	22.59	22 ± 1			
	1	99	1	22.52	22 ± 1			
	50	0	2	21.74	22 ± 1			
	50	24	2	21.73	22 ± 1			
	50	49	2	21.69	22 ± 1			
	100	0	2	21.23	22 ± 1			

BW (MHz)	Ch	Freq. (MHz)	Mode	UL RB Allocation	UL RB Offset	MPR	Average power (dBm)	Tune up Power tolerant
15MHz	20025	1717.5	QPSK	1	0	0	23.28	23 ± 1
				1	37	0	23.18	23 ± 1
				1	74	0	23.19	23 ± 1
				36	0	1	22.37	23 ± 1
				36	16	1	22.31	23 ± 1
				36	35	1	22.27	23 ± 1
				75	0	1	22.31	23 ± 1
			16QAM	1	0	1	22.73	22 ± 1
				1	37	1	22.59	22 ± 1
				1	74	1	22.65	22 ± 1
				36	0	2	21.75	22 ± 1
				36	16	2	21.74	22 ± 1
				36	35	2	21.65	22 ± 1
				75	0	2	21.27	22 ± 1
	20175	1732.5	QPSK	1	0	0	23.32	23 ± 1
				1	37	0	23.34	23 ± 1
				1	74	0	23.37	23 ± 1
				36	0	1	22.32	23 ± 1
				36	16	1	22.33	23 ± 1
				36	35	1	22.35	23 ± 1
				75	0	1	22.33	23 ± 1
			16QAM	1	0	1	22.07	22 ± 1
				1	37	1	22.13	22 ± 1
				1	74	1	22.16	22 ± 1
				36	0	2	21.64	22 ± 1
				36	16	2	21.58	22 ± 1
				36	35	2	21.43	22 ± 1
				75	0	2	21.31	22 ± 1
20325	1747.5	QPSK	1	0	0	23.24	23 ± 1	
			1	37	0	23.23	23 ± 1	
			1	74	0	23.30	23 ± 1	
			36	0	1	22.28	23 ± 1	
			36	16	1	22.31	23 ± 1	
			36	35	1	22.34	23 ± 1	
			75	0	1	22.31	23 ± 1	
		16QAM	1	0	1	22.42	22 ± 1	
			1	37	1	22.35	22 ± 1	
			1	74	1	22.29	22 ± 1	
			36	0	2	21.86	22 ± 1	
			36	16	2	21.84	22 ± 1	
			36	35	2	21.75	22 ± 1	
			75	0	2	21.24	22 ± 1	

BW (MHz)	Ch	Freq. (MHz)	Mode	UL RB Allocation	UL RB Offset	MPR	Average power (dBm)	Tune up Power tolerant
10MHz	20000	1715.0	QPSK	1	0	0	23.26	23 ± 1
				1	24	0	23.23	23 ± 1
				1	49	0	23.12	23 ± 1
				25	0	1	22.23	23 ± 1
				25	12	1	22.19	23 ± 1
				25	24	1	22.14	23 ± 1
				50	0	1	22.17	23 ± 1
			16QAM	1	0	1	22.74	22 ± 1
				1	24	1	22.64	22 ± 1
				1	49	1	22.52	22 ± 1
				25	0	2	21.46	22 ± 1
				25	12	2	21.43	22 ± 1
				25	24	2	21.39	22 ± 1
				50	0	2	21.17	22 ± 1
	20175	1732.5	QPSK	1	0	0	23.32	23 ± 1
				1	24	0	23.38	23 ± 1
				1	49	0	23.37	23 ± 1
				25	0	1	22.25	23 ± 1
				25	12	1	22.27	23 ± 1
				25	24	1	22.29	23 ± 1
				50	0	1	22.26	23 ± 1
			16QAM	1	0	1	22.09	22 ± 1
				1	24	1	22.14	22 ± 1
				1	49	1	22.15	22 ± 1
				25	0	2	21.76	22 ± 1
				25	12	2	21.74	22 ± 1
				25	24	2	21.72	22 ± 1
				50	0	2	21.27	22 ± 1
	20350	1750.0	QPSK	1	0	0	23.33	23 ± 1
				1	24	0	23.37	23 ± 1
1				49	0	23.34	23 ± 1	
25				0	1	22.21	23 ± 1	
25				12	1	22.22	23 ± 1	
25				24	1	22.20	23 ± 1	
50				0	1	22.20	23 ± 1	
16QAM			1	0	1	22.22	22 ± 1	
			1	24	1	22.24	22 ± 1	
			1	49	1	22.16	22 ± 1	
			25	0	2	21.84	22 ± 1	
			25	12	2	21.83	22 ± 1	
			25	24	2	21.81	22 ± 1	
			50	0	2	21.22	22 ± 1	

BW (MHz)	Ch	Freq. (MHz)	Mode	UL RB Allocation	UL RB Offset	MPR	Average power (dBm)	Tune up Power tolerant
5MHz	20000	1715.0	QPSK	1	0	0	23.26	23 ± 1
				1	12	0	23.24	23 ± 1
				1	24	0	23.17	23 ± 1
				12	0	1	22.25	23 ± 1
				12	6	1	22.24	23 ± 1
				12	11	1	22.20	23 ± 1
				25	0	1	22.18	23 ± 1
			16QAM	1	0	1	22.57	22 ± 1
				1	12	1	22.53	22 ± 1
				1	24	1	22.44	22 ± 1
				12	0	2	21.46	22 ± 1
				12	6	2	21.43	22 ± 1
				12	11	2	21.41	22 ± 1
				25	0	2	21.15	22 ± 1
	20175	1732.5	QPSK	1	0	0	23.22	23 ± 1
				1	12	0	23.23	23 ± 1
				1	24	0	23.19	23 ± 1
				12	0	1	22.29	23 ± 1
				12	6	1	22.28	23 ± 1
				12	11	1	22.30	23 ± 1
				25	0	1	22.23	23 ± 1
			16QAM	1	0	1	22.26	22 ± 1
				1	12	1	22.25	22 ± 1
				1	24	1	22.23	22 ± 1
				12	0	2	21.74	22 ± 1
				12	6	2	21.68	22 ± 1
				12	11	2	21.63	22 ± 1
				25	0	2	21.25	22 ± 1
	20350	1750.0	QPSK	1	0	0	23.37	23 ± 1
				1	12	0	23.35	23 ± 1
1				24	0	23.27	23 ± 1	
12				0	1	22.33	23 ± 1	
12				6	1	22.28	23 ± 1	
12				11	1	22.29	23 ± 1	
25				0	1	22.23	23 ± 1	
16QAM			1	0	1	22.22	22 ± 1	
			1	12	1	22.21	22 ± 1	
			1	24	1	22.13	22 ± 1	
			12	0	2	21.78	22 ± 1	
			12	6	2	21.75	22 ± 1	
			12	11	2	21.76	22 ± 1	
			25	0	2	21.24	22 ± 1	

BW (MHz)	Ch	Freq. (MHz)	Mode	UL RB Allocation	UL RB Offset	MPR	Average power (dBm)	Tune up Power tolerant
3MHz	19965	1711.5	QPSK	1	0	0	23.27	23 ± 1
				1	7	0	23.30	23 ± 1
				1	14	0	23.25	23 ± 1
				8	0	1	22.23	23 ± 1
				8	4	1	22.21	23 ± 1
				8	7	1	22.19	23 ± 1
				15	0	1	22.21	23 ± 1
			16QAM	1	0	1	22.02	22 ± 1
				1	7	1	22.03	22 ± 1
				1	14	1	21.98	22 ± 1
				8	0	2	21.83	22 ± 1
				8	4	2	21.81	22 ± 1
				8	7	2	21.78	22 ± 1
				15	0	2	21.14	22 ± 1
	20175	1732.5	QPSK	1	0	0	23.25	23 ± 1
				1	7	0	23.29	23 ± 1
				1	14	0	23.28	23 ± 1
				8	0	1	22.25	23 ± 1
				8	4	1	22.24	23 ± 1
				8	7	1	22.23	23 ± 1
				15	0	1	22.24	23 ± 1
			16QAM	1	0	1	22.17	22 ± 1
				1	7	1	22.19	22 ± 1
				1	14	1	22.16	22 ± 1
				8	0	2	21.63	22 ± 1
				8	4	2	21.61	22 ± 1
				8	7	2	21.58	22 ± 1
				15	0	2	21.25	22 ± 1
	20385	1753.5	QPSK	1	0	0	23.22	23 ± 1
				1	7	0	23.27	23 ± 1
1				14	0	23.20	23 ± 1	
8				0	1	22.24	23 ± 1	
8				4	1	22.25	23 ± 1	
8				7	1	22.23	23 ± 1	
15				0	1	22.26	23 ± 1	
16QAM			1	0	1	22.61	22 ± 1	
			1	7	1	22.60	22 ± 1	
			1	14	1	22.53	22 ± 1	
			8	0	2	21.69	22 ± 1	
			8	4	2	21.67	22 ± 1	
			8	7	2	21.65	22 ± 1	
			15	0	2	21.29	22 ± 1	

BW (MHz)	Ch	Freq. (MHz)	Mode	UL RB Allocation	UL RB Offset	MPR	Average power (dBm)	Tune up Power tolerant
1.4MHz	19957	1710.7	QPSK	1	0	0	23.30	23 ± 1
				1	2	0	23.31	23 ± 1
				1	5	0	23.31	23 ± 1
				3	0	0	23.30	23 ± 1
				3	1	0	23.29	23 ± 1
				3	2	0	23.26	23 ± 1
			16QAM	6	0	1	22.24	23 ± 1
				1	0	1	22.05	22 ± 1
				1	2	1	22.06	22 ± 1
				1	5	1	22.04	22 ± 1
				3	0	1	21.72	22 ± 1
				3	1	1	21.71	22 ± 1
	20175	1732.5	QPSK	3	2	1	21.69	22 ± 1
				6	0	2	21.16	22 ± 1
				1	0	0	23.26	23 ± 1
				1	2	0	23.33	23 ± 1
				1	5	0	23.28	23 ± 1
				3	0	0	23.25	23 ± 1
			16QAM	3	1	0	23.28	23 ± 1
				3	2	0	23.31	23 ± 1
				6	0	1	22.24	23 ± 1
				1	0	1	22.18	22 ± 1
				1	2	1	22.29	22 ± 1
				1	5	1	22.22	22 ± 1
	20393	1754.3	QPSK	3	0	1	21.42	22 ± 1
				3	1	1	21.39	22 ± 1
				3	2	1	21.38	22 ± 1
				6	0	2	21.07	22 ± 1
				1	0	0	23.28	23 ± 1
				1	2	0	23.32	23 ± 1
16QAM			1	5	0	23.29	23 ± 1	
			3	0	0	23.27	23 ± 1	
			3	1	0	23.24	23 ± 1	
			3	2	0	23.25	23 ± 1	
			6	0	1	22.34	23 ± 1	
			1	0	1	21.86	22 ± 1	
16QAM	1	2	1	21.90	22 ± 1			
	1	5	1	21.86	22 ± 1			
	3	0	1	21.47	22 ± 1			
	3	1	1	21.46	22 ± 1			
	3	2	1	21.43	22 ± 1			
	6	0	2	21.16	22 ± 1			

LTE Band 5:

BW (MHz)	Ch	Freq. (MHz)	Mode	UL RB Allocation	UL RB Offset	MPR	Average power (dBm)	Tune up Power tolerant
10MHz	20450	829	QPSK	1	0	0	22.57	22 ± 1
				1	24	0	22.52	22 ± 1
				1	49	0	22.46	22 ± 1
				25	0	1	21.71	22 ± 1
				25	12	1	21.68	22 ± 1
				25	24	1	21.64	22 ± 1
				50	0	1	21.69	22 ± 1
			16QAM	1	0	1	22.27	21.3 ± 1
				1	24	1	22.21	21.3 ± 1
				1	49	1	22.28	21.3 ± 1
				25	0	2	21.48	21.3 ± 1
				25	12	2	21.42	21.3 ± 1
				25	24	2	21.41	21.3 ± 1
				50	0	2	21.75	21.3 ± 1
	20525	836.5	QPSK	1	0	0	22.52	22 ± 1
				1	24	0	22.51	22 ± 1
				1	49	0	22.39	22 ± 1
				25	0	1	21.67	22 ± 1
				25	12	1	21.66	22 ± 1
				25	24	1	21.65	22 ± 1
				50	0	1	21.68	22 ± 1
			16QAM	1	0	1	22.25	21.3 ± 1
				1	24	1	22.24	21.3 ± 1
				1	49	1	22.19	21.3 ± 1
				25	0	2	21.65	21.3 ± 1
				25	12	2	21.62	21.3 ± 1
				25	24	2	21.61	21.3 ± 1
				50	0	2	20.74	21.3 ± 1
	20600	844	QPSK	1	0	0	22.69	22 ± 1
				1	24	0	22.63	22 ± 1
1				49	0	22.55	22 ± 1	
25				0	1	21.65	22 ± 1	
25				12	1	21.62	22 ± 1	
25				24	1	21.63	22 ± 1	
50				0	1	21.65	22 ± 1	
16QAM			1	0	1	21.61	21.3 ± 1	
			1	24	1	21.51	21.3 ± 1	
			1	49	1	21.42	21.3 ± 1	
			25	0	2	21.15	21.3 ± 1	
			25	12	2	21.08	21.3 ± 1	
			25	24	2	20.89	21.3 ± 1	
			50	0	2	20.68	21.3 ± 1	

BW (MHz)	Ch	Freq. (MHz)	Mode	UL RB Allocation	UL RB Offset	MPR	Average power (dBm)	Tune up Power tolerant
5MHz	20425	826.5	QPSK	1	0	0	22.69	22 ± 1
				1	12	0	22.64	22 ± 1
				1	24	0	22.62	22 ± 1
				12	0	1	21.75	22 ± 1
				12	6	1	21.76	22 ± 1
				12	11	1	21.72	22 ± 1
				25	0	1	21.70	22 ± 1
			16QAM	1	0	1	22.18	21.3 ± 1
				1	12	1	22.14	21.3 ± 1
				1	24	1	22.08	21.3 ± 1
				12	0	2	21.84	21.3 ± 1
				12	6	2	21.81	21.3 ± 1
				12	11	2	21.78	21.3 ± 1
				25	0	2	20.70	21.3 ± 1
	20525	836.5	QPSK	1	0	0	22.56	22 ± 1
				1	12	0	22.57	22 ± 1
				1	24	0	22.51	22 ± 1
				12	0	1	21.74	22 ± 1
				12	6	1	21.72	22 ± 1
				12	11	1	21.71	22 ± 1
				25	0	1	21.69	22 ± 1
			16QAM	1	0	1	21.73	21.3 ± 1
				1	12	1	21.74	21.3 ± 1
				1	24	1	21.68	21.3 ± 1
				12	0	2	21.32	21.3 ± 1
				12	6	2	21.29	21.3 ± 1
				12	11	2	21.27	21.3 ± 1
				25	0	2	20.78	21.3 ± 1
	20625	846.5	QPSK	1	0	0	22.68	22 ± 1
				1	12	0	22.67	22 ± 1
1				24	0	22.53	22 ± 1	
12				0	1	21.74	22 ± 1	
12				6	1	21.71	22 ± 1	
12				11	1	21.67	22 ± 1	
25				0	1	21.63	22 ± 1	
16QAM			1	0	1	21.69	21.3 ± 1	
			1	12	1	21.68	21.3 ± 1	
			1	24	1	21.57	21.3 ± 1	
			12	0	2	21.26	21.3 ± 1	
			12	6	2	21.24	21.3 ± 1	
			12	11	2	21.23	21.3 ± 1	
			25	0	2	20.72	21.3 ± 1	

BW (MHz)	Ch	Freq. (MHz)	Mode	UL RB Allocation	UL RB Offset	MPR	Average power (dBm)	Tune up Power tolerant
3MHz	20415	825.5	QPSK	1	0	0	22.67	22 ± 1
				1	7	0	22.68	22 ± 1
				1	14	0	22.61	22 ± 1
				8	0	1	21.71	22 ± 1
				8	4	1	21.69	22 ± 1
				8	7	1	21.65	22 ± 1
				15	0	1	21.68	22 ± 1
			16QAM	1	0	1	21.55	21.3 ± 1
				1	7	1	21.54	21.3 ± 1
				1	14	1	21.48	21.3 ± 1
				8	0	2	21.12	21.3 ± 1
				8	4	2	21.09	21.3 ± 1
				8	7	2	21.07	21.3 ± 1
				15	0	2	20.65	21.3 ± 1
	20525	836.5	QPSK	1	0	0	22.62	22 ± 1
				1	7	0	22.65	22 ± 1
				1	14	0	22.58	22 ± 1
				8	0	1	21.69	22 ± 1
				8	4	1	21.70	22 ± 1
				8	7	1	21.71	22 ± 1
				15	0	1	21.69	22 ± 1
			16QAM	1	0	1	21.68	21.3 ± 1
				1	7	1	21.67	21.3 ± 1
				1	14	1	21.63	21.3 ± 1
				8	0	2	21.34	21.3 ± 1
				8	4	2	21.32	21.3 ± 1
				8	7	2	21.31	21.3 ± 1
				15	0	2	20.75	21.3 ± 1
	20635	847.5	QPSK	1	0	0	22.45	22 ± 1
				1	7	0	22.44	22 ± 1
1				14	0	22.33	22 ± 1	
8				0	1	21.65	22 ± 1	
8				4	1	21.63	22 ± 1	
8				7	1	21.60	22 ± 1	
15				0	1	21.63	22 ± 1	
16QAM			1	0	1	22.18	21.3 ± 1	
			1	7	1	22.14	21.3 ± 1	
			1	14	1	22.02	21.3 ± 1	
			8	0	2	21.67	21.3 ± 1	
			8	4	2	21.64	21.3 ± 1	
			8	7	2	21.63	21.3 ± 1	
			15	0	2	20.77	21.3 ± 1	

BW (MHz)	Ch	Freq. (MHz)	Mode	UL RB Allocation	UL RB Offset	MPR	Average power (dBm)	Tune up Power tolerant
1.4MHz	20407	824.7	QPSK	1	0	0	22.67	22 ± 1
				1	2	0	22.70	22 ± 1
				1	5	0	22.70	22 ± 1
				3	0	0	22.79	22 ± 1
				3	1	0	22.77	22 ± 1
				3	2	0	22.78	22 ± 1
			6	0	1	21.61	22 ± 1	
			16QAM	1	0	1	21.56	21.3 ± 1
				1	2	1	21.59	21.3 ± 1
				1	5	1	21.57	21.3 ± 1
				3	0	1	21.28	21.3 ± 1
				3	1	1	21.26	21.3 ± 1
				3	2	1	21.14	21.3 ± 1
			6	0	2	20.65	21.3 ± 1	
	20525	836.5	QPSK	1	0	0	22.63	22 ± 1
				1	2	0	22.67	22 ± 1
				1	5	0	22.65	22 ± 1
				3	0	0	22.72	22 ± 1
				3	1	0	22.74	22 ± 1
				3	2	0	22.77	22 ± 1
			6	0	1	21.58	22 ± 1	
			16QAM	1	0	1	21.68	21.3 ± 1
				1	2	1	21.78	21.3 ± 1
				1	5	1	21.71	21.3 ± 1
				3	0	1	21.42	21.3 ± 1
				3	1	1	21.39	21.3 ± 1
				3	2	1	21.38	21.3 ± 1
			6	0	2	20.52	21.3 ± 1	
	20643	848.3	QPSK	1	0	0	22.49	22 ± 1
				1	2	0	22.50	22 ± 1
1				5	0	22.45	22 ± 1	
3				0	0	22.65	22 ± 1	
3				1	0	22.64	22 ± 1	
3				2	0	22.63	22 ± 1	
6			0	1	21.56	22 ± 1		
16QAM			1	0	1	21.23	21.3 ± 1	
			1	2	1	21.24	21.3 ± 1	
			1	5	1	21.20	21.3 ± 1	
			3	0	1	21.09	21.3 ± 1	
			3	1	1	21.07	21.3 ± 1	
			3	2	1	21.06	21.3 ± 1	
6			0	2	20.54	21.3 ± 1		

LTE Band 7:

BW (MHz)	Ch	Freq. (MHz)	Mode	UL RB Allocation	UL RB Offset	MPR	Average power (dBm)	Tune up Power tolerant
20MHz	20850	2510	QPSK	1	0	0	22.46	22 ± 1
				1	49	0	22.84	22 ± 1
				1	99	0	21.59	22 ± 1
				50	0	1	22.34	22 ± 1
				50	24	1	21.84	22 ± 1
				50	49	1	21.31	22 ± 1
				100	0	1	21.84	22 ± 1
			16QAM	1	0	1	21.88	21.3 ± 1
				1	49	1	22.19	21.3 ± 1
				1	99	1	20.96	21.3 ± 1
				50	0	2	21.26	21.3 ± 1
				50	24	2	21.25	21.3 ± 1
				50	49	2	21.17	21.3 ± 1
				100	0	2	20.93	21.3 ± 1
	21100	2535	QPSK	1	0	0	21.26	22 ± 1
				1	49	0	22.26	22 ± 1
				1	99	0	22.25	22 ± 1
				50	0	1	21.11	22 ± 1
				50	24	1	21.36	22 ± 1
				50	49	1	22.39	22 ± 1
				100	0	1	21.75	22 ± 1
			16QAM	1	0	1	20.61	21.3 ± 1
				1	49	1	21.74	21.3 ± 1
				1	99	1	22.29	21.3 ± 1
				50	0	2	20.49	21.3 ± 1
				50	24	2	21.36	21.3 ± 1
				50	49	2	22.14	21.3 ± 1
				100	0	2	20.92	21.3 ± 1
	21350	2560	QPSK	1	0	0	22.23	21.3 ± 1
				1	49	0	21.19	21.3 ± 1
1				99	0	21.26	21.3 ± 1	
50				0	1	21.38	21.3 ± 1	
50				24	1	21.08	21.3 ± 1	
50				49	1	20.31	21.3 ± 1	
100				0	1	20.80	21.3 ± 1	
16QAM			1	0	1	22.23	21.3 ± 1	
			1	49	1	20.38	21.3 ± 1	
			1	99	1	20.49	21.3 ± 1	
			50	0	2	21.24	21.3 ± 1	
			50	24	2	20.51	21.3 ± 1	
			50	49	2	20.42	21.3 ± 1	
			100	0	2	20.34	21.3 ± 1	

BW (MHz)	Ch	Freq. (MHz)	Mode	UL RB Allocation	UL RB Offset	MPR	Average power (dBm)	Tune up Power tolerant
15MHz	20825	1717.5	QPSK	1	0	0	22.25	22 ± 1
				1	37	0	22.75	22 ± 1
				1	74	0	21.80	22 ± 1
				36	0	1	21.98	22 ± 1
				36	16	1	21.76	22 ± 1
				36	35	1	21.61	22 ± 1
				75	0	1	21.81	22 ± 1
			16QAM	1	0	1	21.22	21.3 ± 1
				1	37	1	21.84	21.3 ± 1
				1	74	1	20.83	21.3 ± 1
				36	0	2	21.26	21.3 ± 1
				36	16	2	21.15	21.3 ± 1
				36	35	2	20.98	21.3 ± 1
				75	0	2	20.95	21.3 ± 1
	21100	1732.5	QPSK	1	0	0	20.92	21.3 ± 1
				1	37	0	21.94	21.3 ± 1
				1	74	0	22.22	21.3 ± 1
				36	0	1	20.62	21.3 ± 1
				36	16	1	21.13	21.3 ± 1
				36	35	1	21.91	21.3 ± 1
				75	0	1	21.29	21.3 ± 1
			16QAM	1	0	1	20.34	21.3 ± 1
				1	37	1	21.25	21.3 ± 1
				1	74	1	22.19	21.3 ± 1
				36	0	2	21.23	21.3 ± 1
				36	16	2	21.15	21.3 ± 1
				36	35	2	21.11	21.3 ± 1
				75	0	2	20.47	21.3 ± 1
	21375	1747.5	QPSK	1	0	0	21.56	21.3 ± 1
				1	37	0	20.45	21.3 ± 1
1				74	0	21.02	21.3 ± 1	
36				0	1	20.31	21.3 ± 1	
36				16	1	20.41	21.3 ± 1	
36				35	1	20.38	21.3 ± 1	
75				0	1	20.32	21.3 ± 1	
16QAM			1	0	1	21.23	21.3 ± 1	
			1	37	1	20.36	21.3 ± 1	
			1	74	1	20.67	21.3 ± 1	
			36	0	2	21.12	21.3 ± 1	
			36	16	2	20.35	21.3 ± 1	
			36	35	2	20.31	21.3 ± 1	
			75	0	2	20.34	21.3 ± 1	

BW (MHz)	Ch	Freq. (MHz)	Mode	UL RB Allocation	UL RB Offset	MPR	Average power (dBm)	Tune up Power tolerant
10MHz	20800	2502	QPSK	1	0	0	21.85	22 ± 1
				1	24	0	22.52	22 ± 1
				1	49	0	22.29	22 ± 1
				25	0	1	21.67	22 ± 1
				25	12	1	21.84	22 ± 1
				25	24	1	21.99	22 ± 1
				50	0	1	21.86	22 ± 1
			16QAM	1	0	1	20.82	21.3 ± 1
				1	24	1	21.61	21.3 ± 1
				1	49	1	21.38	21.3 ± 1
				25	0	2	21.21	21.3 ± 1
				25	12	2	21.14	21.3 ± 1
				25	24	2	21.08	21.3 ± 1
				50	0	2	20.96	21.3 ± 1
	21100	2535	QPSK	1	0	0	21.19	22 ± 1
				1	24	0	22.02	22 ± 1
				1	49	0	22.52	22 ± 1
				25	0	1	21.88	22 ± 1
				25	12	1	21.13	22 ± 1
				25	24	1	21.72	22 ± 1
				50	0	1	21.33	22 ± 1
			16QAM	1	0	1	20.36	21.3 ± 1
				1	24	1	20.18	21.3 ± 1
				1	49	1	21.72	21.3 ± 1
				25	0	2	20.86	21.3 ± 1
				25	12	2	20.75	21.3 ± 1
				25	24	2	20.71	21.3 ± 1
				50	0	2	20.55	21.3 ± 1
	21400	2565	QPSK	1	0	0	21.02	21.3 ± 1
				1	24	0	20.77	21.3 ± 1
1				49	0	21.13	21.3 ± 1	
25				0	1	20.34	21.3 ± 1	
25				12	1	20.36	21.3 ± 1	
25				24	1	20.39	21.3 ± 1	
50				0	1	20.31	21.3 ± 1	
16QAM			1	0	1	20.65	21.3 ± 1	
			1	24	1	20.47	21.3 ± 1	
			1	49	1	20.75	21.3 ± 1	
			25	0	2	20.51	21.3 ± 1	
			25	12	2	20.43	21.3 ± 1	
			25	24	2	20.38	21.3 ± 1	
			50	0	2	20.32	21.3 ± 1	

BW (MHz)	Ch	Freq. (MHz)	Mode	UL RB Allocation	UL RB Offset	MPR	Average power (dBm)	Tune up Power tolerant
5MHz	19975	1712.5	QPSK	1	0	0	22.08	22 ± 1
				1	12	0	22.17	22 ± 1
				1	24	0	22.62	22 ± 1
				12	0	1	21.38	22 ± 1
				12	6	1	21.56	22 ± 1
				12	11	1	21.80	22 ± 1
				25	0	1	21.59	22 ± 1
			16QAM	1	0	1	21.61	21.3 ± 1
				1	12	1	21.72	21.3 ± 1
				1	24	1	22.22	21.3 ± 1
				12	0	2	21.48	21.3 ± 1
				12	6	2	21.45	21.3 ± 1
				12	11	2	21.41	21.3 ± 1
				25	0	2	20.68	21.3 ± 1
	20175	1732.5	QPSK	1	0	0	21.76	22 ± 1
				1	12	0	21.88	22 ± 1
				1	24	0	22.36	22 ± 1
				12	0	1	21.11	22 ± 1
				12	6	1	21.32	22 ± 1
				12	11	1	21.58	22 ± 1
				25	0	1	21.33	22 ± 1
			16QAM	1	0	1	21.03	21.3 ± 1
				1	12	1	21.15	21.3 ± 1
				1	24	1	21.69	21.3 ± 1
				12	0	2	21.32	21.3 ± 1
				12	6	2	21.29	21.3 ± 1
				12	11	2	21.26	21.3 ± 1
				25	0	2	20.55	21.3 ± 1
	20375	1752.5	QPSK	1	0	0	21.04	21.3 ± 1
				1	12	0	20.91	21.3 ± 1
1				24	0	21.36	21.3 ± 1	
12				0	1	20.31	21.3 ± 1	
12				6	1	20.45	21.3 ± 1	
12				11	1	20.59	21.3 ± 1	
25				0	1	20.41	21.3 ± 1	
16QAM			1	0	1	20.38	21.3 ± 1	
			1	12	1	20.37	21.3 ± 1	
			1	24	1	20.74	21.3 ± 1	
			12	0	2	20.51	21.3 ± 1	
			12	6	2	20.42	21.3 ± 1	
			12	11	2	20.36	21.3 ± 1	
			25	0	2	20.34	21.3 ± 1	

WIFI Mode (2.4G)

Mode	Channel number	Frequency (MHz)	Data rate(Mbps)	Average Output Power(dBm)	Average Tune up limited(dBm)
802.11b	1	2412	1	9.33	8.5±1
	7	2442	1	8.38	8.5±1
	13	2472	1	8.72	8.5±1
802.11g	1	2412	6	9.29	8.5±1
	7	2442	6	9.25	8.5±1
	13	2472	6	9.26	8.5±1
802.11n(HT20)	1	2412	MCS0	9.24	8.5±1
	7	2442	MCS0	9.34	8.5±1
	13	2472	MCS0	9.47	8.5±1
802.11n(HT40)	3	2422	MCS0	9.27	8.5±1
	6	2442	MCS0	8.81	8.5±1
	9	2462	MCS0	8.85	8.5±1

Bluetooth Measurement Result

Mode	Frequency (MHz)	Output Power(dBm)	Tune up limited(dBm)
GFSK	2402	3.197	3±1
	2441	4.092	4±1
	2480	4.130	4±1
π/4DQPSK	2402	2.550	3±1
	2441	3.390	3±1
	2480	3.356	3±1
8DPSK	2402	2.673	3±1
	2441	3.512	3±1
	2480	3.481	3±1

BLE Measurement Result

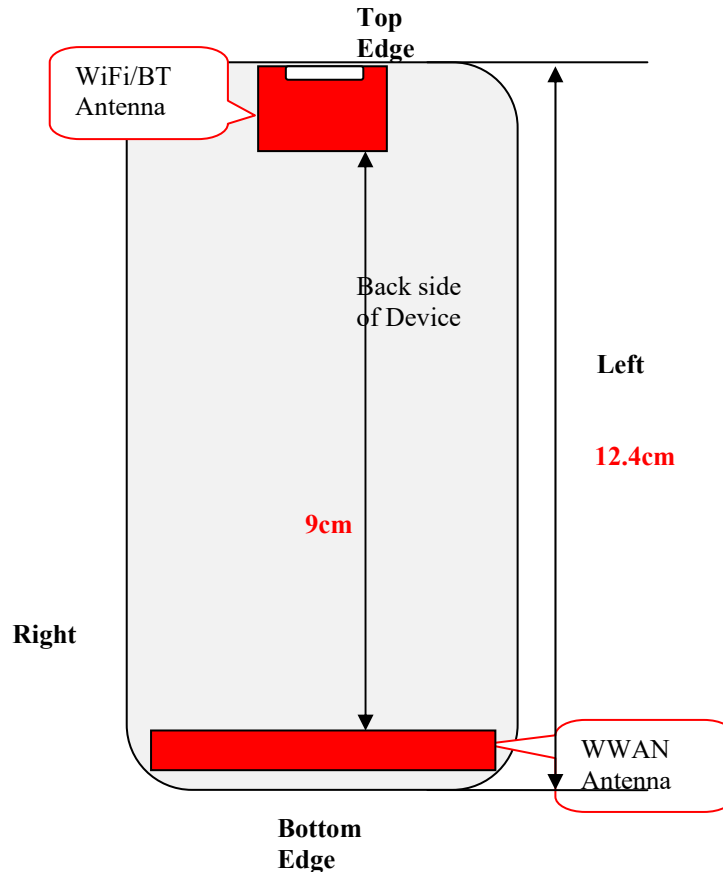
Channel number	Frequency (MHz)	Output Power(dBm)	Tune up limited(dBm)
0	2402	-3.786	-3±1
19	2440	-3.206	-3±1
39	2480	-3.344	-3±1

Note: 1. Both WIFI and BT power was test and only Maximum Power was provide here.

2. SAR Test Exclusion Threshold for WIFI&BT is about 9.6mW, the maximum tune up power of WIFI is 9.5dBm=8.91mW, BT is 5dBm=3.16mW, no stand-alone SAR is required.

10 Exposure Conditions Consideration

EUT antenna location:



Test position consideration:

Distance of EUT antenna-to-edge/surface(mm), Test distance:10mm						
Antennas	Back side	Front side	Left Edge	Right Edge	Top Edge	Bottom Edge
WWAN	2	2	2	2	114	2
WLAN	2	2	47	2	2	100
Bluetooth	2	2	47	2	2	100

Test distance:10mm						
Antennas	Back side	Front side	Left Edge	Right Edge	Top Edge	Bottom Edge
WWAN	YES	YES	YES	YES	NO	YES
WLAN	NO	NO	NO	NO	NO	NO
Bluetooth	NO	NO	NO	NO	NO	NO

Note:

1. Head/Body-worn/Hotspot mode SAR assessments are required.
2. Referring to KDB 941225 D06v02, when the overall device length and width are $\geq 9\text{cm} * 5\text{cm}$, the test distance is 10mm. SAR must be measured for all sides and surfaces with a transmitting antenna located within 25mm from that surface or edge.
3. Per KDB 447498 D01v05r02, for handsets the test separation distance is determined by the smallest distance between the outer surface of the device and the user, which is 0 mm for head SAR, 10 mm for hotspot SAR, and 10 mm for body-worn SAR.
4. WLAN/BT SAR is not required due to the low power.

11 SAR TEST RESULTS

Test Condition:

1.	SAR Measurement The distance between the EUT and the antenna of the emulator is more than 50 cm and the output power radiated from the emulator antenna is at least 30 dB less than the output power of EUT.		
2	Measurement Uncertainty: See page 34 for detail		
3	Environmental Conditions	Temperature	23°C
		Relative Humidity	53%
		Atmospheric Pressure	1019mbar
4	Test Date :November 24th,2015, 2015~ November 30th,2015 Tested By : Wiky Jam		

Generally Test Procedures:

1. Establish communication link between EUT and base station emulation by air link.
2. Place the EUT in the selected test position. (Cheek, tilt or flat)
3. Perform SAR testing at middle or highest output power channel under the selected test mode. If the measured 1-g SAR is ≤ 0.8 W/kg, then testing for the other channel will not be performed.
4. When SAR is < 0.8 W/kg, no repeated SAR measurement is required

For WCDMA test:

1. KDB941225 D01-Body SAR is not required for HSDPA when the average output of each RF channel with HSDPA active is less than 0.25dB higher than measured without HSDPA using 12.2kbps RMC or the maximum SAR for 12.2kbps RMC $< 75\%$ of the SAR limit.
2. KDB941225 D01-Body SAR is not required for handset with HSPA capabilities when the maximum average output of each RF channel with HSUPA/HSDPA active is less than 0.25dB higher than that measure without HSUPA/HSDPA using 12.2kbps RMC AND THE maximum SAR for 12.2kbps RMC is $< 75\%$ of the SAR limit

For LTE test:

1. According to FCC KDB 941225 D05v02r04:
 - a. Per Section 5.2.1, SAR is required for QPSK 1 RB Allocation for the largest bandwidth
 - i. The required channel and offset combination with the highest maximum output power is required for SAR.
 - ii. When the reported SAR is ≤ 0.8 W/kg, testing of the remaining RB offset configurations and required test channels is not required. Otherwise, SAR is required for the remaining required test channels using the RB offset configuration with highest output power for that channel.
 - iii. When the reported SAR for a required test channel is > 1.45 W/kg, SAR is required for all RB offset configurations for that channel.
 - b. Per Section 5.2.2, SAR is required for 50% RB allocation using the largest bandwidth following the same procedures outlined in Section 5.2.1.
 - c. Per Section 5.2.3, QPSK SAR is not required for the 100% allocation when the highest maximum output power for the 100% allocation is less than the highest maximum output power of the 1 RB and 50% RB allocations and the reported SAR for the 1 RB and 50% RB allocations is < 0.8 W/kg.
 - d. Per Section 5.2.4 and 5.3, SAR tests for higher order modulations and lower bandwidths configurations are not required when the conducted power of the required test configurations determined by Sections 5.2.1 through 5.2.3 is less than or equal to $\frac{1}{2}$ dB higher than the equivalent configuration using QPSK modulation and when the QPSK SAR for those configurations is < 1.45 W/kg.

SAR Summary Test Result:

GSM850

Date of Measured : November 24th,2015			Body-worn/Hotspot Separation Distance:1.0cm					
Position	Channel	Mode	SAR 1g(W/kg)	Limit (W/kg)	Power Drift (%)	Maximum Turn-up Power(dBm)	measured output power (dBm)	Scaled Maximum SAR(W/kg)
Right Head Cheek	Mid	GSM voice	0.125	1.6	-3.27	32	31.83	0.13
Right Head Tilt	Mid	GSM voice	0.104	1.6	0.16	32	31.83	0.11
Left Head Cheek	Mid	GSM voice	0.113	1.6	0.11	32	31.83	0.12
Left Head Tilt	Mid	GSM voice	0.053	1.6	0.83	32	31.83	0.06
Body Front side	Mid	EGPRS Class12	0.312	1.6	2.62	29.5	28.54	0.39
Body Back-side	Mid	EGPRS Class12	0.533	1.6	-3.48	29.5	28.54	0.66
Body Right EDGE	Mid	EGPRS Class12	0.203	1.6	1.09	29.5	28.54	0.25
Body Left EDGE	Mid	EGPRS Class12	0.211	1.6	1.81	29.5	28.54	0.26
Body Bottom EDGE	Mid	EGPRS Class12	0.274	1.6	0.07	29.5	28.54	0.34

WCDMA BAND V (850)

Date of Measured : November 24th,2015			Body-worn/Hotspot Separation Distance:1.0cm					
Position	Channel	Mode	SAR 1g(W/kg)	Limit (W/kg)	Power Drift (%)	Maximum Turn-up Power(dBm)	measured output power (dBm)	Scaled Maximum SAR(W/kg)
Right Head Cheek	Mid	RMC 12.2kbps	0.126	1.6	2.43	24	23.01	0.16
Right Head Tilt	Mid	RMC 12.2kbps	0.105	1.6	-1.02	24	23.01	0.13
Left Head Cheek	Mid	RMC 12.2kbps	0.117	1.6	-1.28	24	23.01	0.15
Left Head Tilt	Mid	RMC 12.2kbps	0.098	1.6	-3.11	24	23.01	0.12
Body Front side	Mid	RMC 12.2kbps	0.143	1.6	-2.10	24	23.01	0.18
Body Back-side	Mid	RMC 12.2kbps	0.216	1.6	-0.18	24	23.01	0.27
Body Right EDGE	Mid	RMC 12.2kbps	0.123	1.6	-0.29	24	23.01	0.15
Body Left EDGE	Mid	RMC 12.2kbps	0.137	1.6	0.87	24	23.01	0.17
Body Bottom EDGE	Mid	RMC 12.2kbps	0.155	1.6	3.99	24	23.01	0.19

PCS1900:

Date of Measured : November 25th,2015			Body-worn/Hotspot Separation Distance:1.0cm					
Position	Channel	Mode	SAR 1g(W/kg)	Limit (W/kg)	Power Drift (%)	Maximum Turn-up Power(dBm)	measured output power (dBm)	Scaled Maximum SAR(W/kg)
Right Head Cheek	Mid	GSM voice	0.073	1.6	-2.85	30.5	29.59	0.09
Right Head Tilt	Mid	GSM voice	0.056	1.6	2.04	30.5	29.59	0.07
Left Head Cheek	Mid	GSM voice	0.066	1.6	1.91	30.5	29.59	0.08
Left Head Tilt	Mid	GSM voice	0.061	1.6	-3.58	30.5	29.59	0.08
Body Front side	Mid	EGPRS Class12	0.127	1.6	-0.66	26.5	25.83	0.15
Body Back side	Mid	EGPRS Class12	0.606	1.6	-1.76	26.5	25.83	0.71
Body Right EDGE	Mid	EGPRS Class12	0.112	1.6	-0.45	26.5	25.83	0.13
Body Left EDGE	Mid	EGPRS Class12	0.137	1.6	1.81	26.5	25.83	0.16
Body Bottom EDGE	Mid	EGPRS Class12	0.153	1.6	3.54	26.5	25.83	0.18

WCDMA BAND II (1900):

Date of Measured : November 25th,2015			Body-worn/Hotspot Separation Distance:1.0cm					
Position	Channel	Mode	SAR 1g(W/kg)	Limit (W/kg)	Power Drift (%)	Maximum Turn-up Power(dBm)	measured output power (dBm)	Scaled Maximum SAR(W/kg)
Right Head Cheek	Mid	RMC 12.2kbps	0.113	1.6	-1.35	24	23.39	0.13
Right Head Tilt	Mid	RMC 12.2kbps	0.086	1.6	2.87	24	23.39	0.10
Left Head Cheek	Mid	RMC 12.2kbps	0.105	1.6	2.33	24	23.39	0.12
Left Head Tilt	Mid	RMC 12.2kbps	0.103	1.6	0.07	24	23.39	0.12
Body Front side	Mid	RMC 12.2kbps	0.233	1.6	-0.71	24	23.39	0.27
Body Back-side	Mid	RMC 12.2kbps	0.685	1.6	-1.15	24	23.39	0.79
Body Right EDGE	Mid	RMC 12.2kbps	0.145	1.6	-1.10	24	23.39	0.17
Body Left EDGE	Mid	RMC 12.2kbps	0.166	1.6	1.09	24	23.39	0.19
Body Bottom EDGE	Mid	RMC 12.2kbps	0.128	1.6	0.14	24	23.39	0.15

LTE Band 7 (2600):

Date of Measured : November 30th,2015						Body-worn/Hotspot Separation Distance:1.0cm				
Position	Channel	Bandwidth (MHz)	MPR (dB)	RB Size	RB Offset	SAR 1g(W/kg)	Power Drift (%)	Maximum Turn-up Power (dBm)	measured output power (dBm)	Scaled Maximum SAR(W/kg)
Right Head Cheek	Mid	20	0	1	49	0.056	-0.58	23	22.26	0.07
Right Head Cheek	Mid	20	1	50	24	0.034	1.31	23	21.36	0.05
Right Head Tilt	Mid	20	0	1	49	0.022	-2.55	23	22.26	0.03
Right Head Tilt	Mid	20	1	50	24	0.041	-1.18	23	21.36	0.06
Left Head Cheek	Mid	20	0	1	49	0.059	0.07	23	22.26	0.07
Left Head Cheek	Mid	20	1	50	24	0.028	0.7	23	21.36	0.04
Left Head Tilt	Mid	20	0	1	49	0.027	0.87	23	22.26	0.03
Left Head Tilt	Mid	20	1	50	24	0.014	-2.33	23	21.36	0.02
Body-worn LCD up	Mid	20	0	1	49	0.203	0.74	23	22.26	0.24
Body-worn LCD up	Mid	20	1	50	24	0.151	0.96	23	21.36	0.22
Body-worn LCD Down	Mid	20	0	1	49	0.316	-1.62	23	22.26	0.37
Body-worn LCD Down	Mid	20	1	50	24	0.308	0.36	23	21.36	0.45
Body Right EDGE	Mid	20	0	1	49	0.177	-2.11	23	22.26	0.21
Body Right EDGE	Mid	20	1	50	24	0.115	1.64	23	21.36	0.17
Body Left EDGE	Mid	20	0	1	49	0.172	-2.11	23	22.26	0.20
Body Left EDGE	Mid	20	1	50	24	0.104	1.64	23	21.36	0.15
Body Bottom EDGE	Mid	20	0	1	49	0.124	0.98	23	22.26	0.15
Body Bottom EDGE	Mid	20	1	50	24	0.188	2.69	23	21.36	0.27
Modulation: QPSK						Limit: 1.6W/kg averaged over 1gram				

LTE Band 5 (850):

Date of Measured : November 24th,2015						Body-worn/Hotspot Separation Distance:1.0cm				
Position	Channel	Bandwidth (MHz)	MPR (dB)	RB Size	RB Offset	SAR 1g(W/kg)	Power Drift (%)	Maximum Turn-up Power (dBm)	measured output power (dBm)	Scaled Maximum SAR(W/kg)
Right Head Cheek	Mid	10	0	1	24	0.081	1.04	23	22.51	0.09
Right Head Cheek	Mid	10	1	25	12	0.074	-1.56	23	21.66	0.10
Right Head Tilt	Mid	10	0	1	24	0.025	2.17	23	22.51	0.03
Right Head Tilt	Mid	10	1	25	12	0.014	-1.13	23	21.66	0.02
Left Head Cheek	Mid	10	0	1	24	0.058	-1.47	23	22.51	0.06
Left Head Cheek	Mid	10	1	25	12	0.076	1.88	23	21.66	0.10
Left Head Tilt	Mid	10	0	1	24	0.037	1.36	23	22.51	0.04
Left Head Tilt	Mid	10	1	25	12	0.040	-0.71	23	21.66	0.05
Body-worn LCD up	Mid	10	0	1	24	0.152	-1.91	23	22.51	0.17
Body-worn LCD up	Mid	10	1	25	12	0.211	2.14	23	21.66	0.29
Body-worn LCD Down	Mid	10	0	1	24	0.271	0.66	23	22.51	0.30
Body-worn LCD Down	Mid	10	1	25	12	0.317	-1.21	23	21.66	0.43
Body Right EDGE	Mid	10	0	1	24	0.121	-2.19	23	22.51	0.14
Body Right EDGE	Mid	10	1	25	12	0.140	-1.64	23	21.66	0.19
Body Left EDGE	Mid	10	0	1	24	0.114	-2.19	23	22.51	0.13
Body Left EDGE	Mid	10	1	25	12	0.120	-1.64	23	21.66	0.16
Body Bottom EDGE	Mid	10	0	1	24	0.179	0.65	23	22.51	0.20
Body Bottom EDGE	Mid	10	1	25	12	0.195	2.11	23	21.66	0.27
Modulation: QPSK						Limit: 1.6W/kg averaged over 1gram				

LTE Band 4 (1700):

Date of Measured : December 25th,2015						Body-worn/Hotspot Separation Distance:1.0cm				
Position	Channel	Bandwidth (MHz)	MPR (dB)	RB Size	RB Offset	SAR 1g(W/kg)	Power Drift (%)	Maximum Turn-up Power (dBm)	measured output power (dBm)	Scaled Maximum SAR(W/kg)
Right Head Cheek	Mid	20	0	1	50	0.032	1.81	24	23.39	0.04
Right Head Cheek	Mid	20	1	50	25	0.021	1.63	24	22.26	0.03
Right Head Tilt	Mid	20	0	1	50	0.041	-2.83	24	23.39	0.05
Right Head Tilt	Mid	20	1	50	25	0.052	-3.21	24	22.26	0.08
Left Head Cheek	Mid	20	0	1	50	0.056	-0.51	24	23.39	0.06
Left Head Cheek	Mid	20	1	50	25	0.029	0.96	24	22.26	0.04
Left Head Tilt	Mid	20	0	1	50	0.073	0.41	24	23.39	0.08
Left Head Tilt	Mid	20	1	50	25	0.057	1.46	24	22.26	0.09
Body-worn LCD up	Mid	20	0	1	50	0.165	-1.84	24	23.39	0.19
Body-worn LCD up	Mid	20	1	50	25	0.157	-1.7	24	22.26	0.23
Body-worn LCD Down	Mid	20	0	1	50	0.291	1.52	24	23.39	0.33
Body-worn LCD Down	Mid	20	1	50	25	0.231	-0.22	24	22.26	0.34
Body Right EDGE	Mid	20	0	1	50	0.159	1.09	24	23.39	0.18
Body Right EDGE	Mid	20	1	50	25	0.136	-0.28	24	22.26	0.20
Body Left EDGE	Mid	20	0	1	50	0.126	1.09	24	23.39	0.15
Body Left EDGE	Mid	20	1	50	25	0.117	-0.28	24	22.26	0.17
Body Bottom EDGE	Mid	20	0	1	50	0.105	0.64	24	23.39	0.12
Body Bottom EDGE	Mid	20	1	50	25	0.093	-1.05	24	22.26	0.14
Modulation: QPSK						Limit: 1.6W/kg averaged over 1gram				

LTE Band 2 (1900):

Date of Measured : November 26th,2015						Body-worn/Hotspot Separation Distance:1.0cm				
Position	Channel	Bandwidth (MHz)	MPR (dB)	RB Size	RB Offset	SAR 1g(W/kg)	Power Drift (%)	Maximum Turn-up Power (dBm)	measured output power (dBm)	Scaled Maximum SAR(W/kg)
Right Head Cheek	Mid	20	0	1	49	0.066	1.35	24	23.18	0.08
Right Head Cheek	Mid	20	1	50	24	0.035	-0.53	24	22.23	0.05
Right Head Tilt	Mid	20	0	1	49	0.048	-0.07	24	23.18	0.06
Right Head Tilt	Mid	20	1	50	24	0.068	-0.33	24	22.23	0.10
Left Head Cheek	Mid	20	0	1	49	0.043	1.50	24	23.18	0.05
Left Head Cheek	Mid	20	1	50	24	0.028	3.67	24	22.23	0.04
Left Head Tilt	Mid	20	0	1	49	0.075	-0.4	24	23.18	0.09
Left Head Tilt	Mid	20	1	50	24	0.071	-1.79	24	22.23	0.11
Body-worn LCD up	Mid	20	0	1	49	0.304	2.03	24	23.18	0.37
Body-worn LCD up	Mid	20	1	50	24	0.218	4.09	24	22.23	0.33
Body-worn LCD Down	Mid	20	0	1	49	0.307	-1.62	24	23.18	0.37
Body-worn LCD Down	Mid	20	1	50	24	0.215	-2.02	24	22.23	0.32
Body Right EDGE	Mid	20	0	1	49	0.172	-4.81	24	23.18	0.21
Body Right EDGE	Mid	20	1	50	24	0.117	-3.28	24	22.23	0.18
Body Left EDGE	Mid	20	0	1	49	0.146	-4.81	24	23.18	0.18
Body Left EDGE	Mid	20	1	50	24	0.104	-3.28	24	22.23	0.16
Body Bottom EDGE	Mid	20	0	1	49	0.106	0.21	24	23.18	0.13
Body Bottom EDGE	Mid	20	1	50	24	0.114	1.72	24	22.23	0.17
Modulation: QPSK						Limit: 1.6W/kg averaged over 1gram				

Measurement variability consideration

According to KDB 865664 D01v01 section 2.8.1, repeated measurements are required following the procedures as below:

1. Repeated measurement is not required when the original highest measured SAR is $< 0.80\text{W/kg}$; steps 2) through 4) do not apply.
 2. When the original highest measured SAR is $\geq 0.80\text{ W/kg}$, repeat that measurement once.
 3. Perform a second repeated measurement only if the ratio of largest to smallest SAR for the original and first repeated measurements is > 1.20 or when the original or repeated measurement is $\geq 1.45\text{ W/kg}$ (~ 10% from the 1-g SAR limit).
 4. Perform a third repeated measurement only if the original, first or second repeated measurement is $\geq 1.5\text{ W/kg}$ and the ratio of largest to smallest SAR for the original, first and second repeated measurements is > 1.20 .
- Measured SAR (W/Kg)

Simultaneous Transmission SAR Analysis.

No.	Applicable Simultaneous Transmission Combination
1.	WWAN+BT
2.	WWAN+WIFI

Note:

1. For simultaneous transmission analysis, WiFi and Bluetooth SAR is estimated per KDB 447498 D01 v05 base on the formula below:
 - $(\text{max. power of channel, including tune-up tolerance, mW}) / (\text{min. test separation distance, mm}) \cdot [\sqrt{f_{\text{GHz}}/x}] \text{ W/kg}$ for test separation distances $\leq 50\text{ mm}$;
where $x = 7.5$ for 1-g SAR, and $x = 18.75$ for 10-g SAR.
 - 0.4 W/kg for 1-g SAR and 1.0 W/kg for 10-g SAR, when the test separation distances is $> 50\text{ mm}$.²¹
2. If the test separation distances is $\leq 5\text{mm}$, 5mm is used for estimated SAR calculation.
3. WIFI maximum tune up power is 9.5dBm, BT's maximum tune up power is 5dBm and the estimated SAR is listed below.

Test position	Head(0.5cm)	Body-worn(1.0cm)
WIFI Estimated SAR(W/kg)	0.37	0.19
BT Estimated SAR(W/kg)	0.13	0.07

Maximum Summation:

position	WWAN	WIFI	BT	WWAN+WIFI	WWAN+BT
	Max. Scaled SAR	Max. Scaled SAR	Max. Scaled SAR		
Head 0cm	0.16	0.37	0.13	0.53	0.29
Body 1.0cm	0.79	0.19	0.07	0.98	0.86

Note: 1g-SAR scalar summation $< 1.6\text{W/kg}$, so no simultaneous SAR is required.

12 SAR MEASUREMENT REFERENCES

References

1. FCC 47 CFR Part 2 “Frequency Allocations and Radio Treaty Matters; General Rules and Regulations”
2. IEEE Std. C95.1-1999, “IEEE Standard for Safety Levels with Respect to Human Exposure to Radio Frequency Electromagnetic Fields, 3kHz to 300GHz”, 1999
3. IEEE Std. 1528-2013, “IEEE Recommended Practice for Determining the Peak Spatial-Average Specific Absorption Rate (SAR) in the Human Head from Wireless Communications Devices: Measurement Techniques”, June 2013
4. IEC 62209-2, “Human exposure to radio frequency fields from hand-held and body-mounted wireless communication devices—Human models, instrumentation, and procedures – Part 2: Procedure to determine the specific absorption rate(SAR) for wireless communication devices used in close proximity to the human body(frequency range of 30MHz to 6GHz)”, March 2010
5. FCC KDB 447498 D01 v06, “RF Exposure Procedures and Equipment Authorization Policies For Mobile and Portable Device”, October 23, 2015
6. FCC KDB 941225 D01 v03r01, “3G SAR Measurement Procedures”, October 23, 2015
7. FCC KDB 865664 D01 v01r04, “SAR Measurement Requirements For 100MHz to 6GHz”, August 7, 2015
8. FCC KDB648474 D04 v01r03, “SAR Evaluation Considerations for Wireless Handsets”. October 23, 2015
9. FCC KDB 941225 D05 v02r04, “SAR Evaluation Considerations for LTE Devices”, October 23, 2015
10. FCC KDB 941225 D06 v02r01, Hot Spot SAR ,October 23, 2015

Maximum SAR measurement Plots

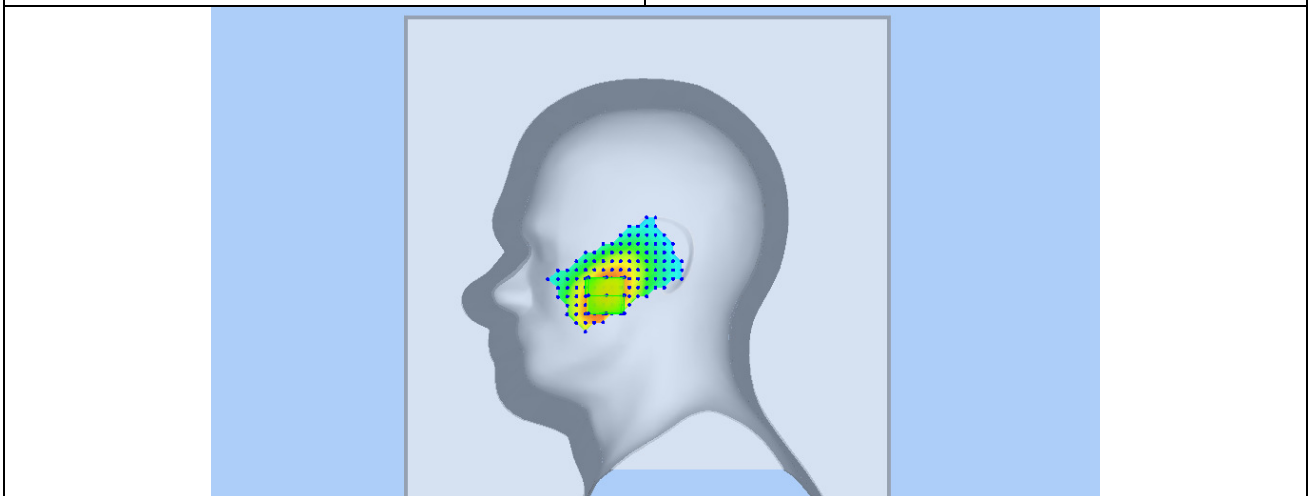
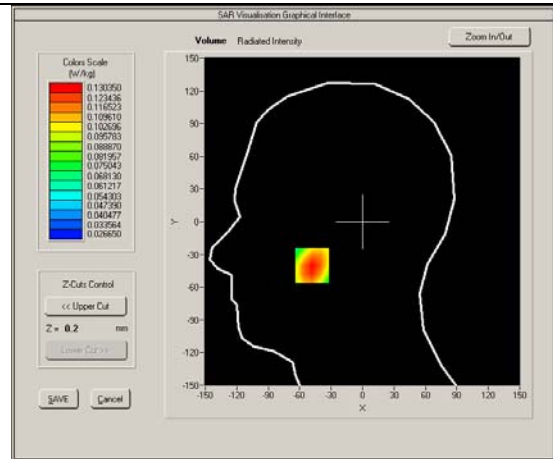
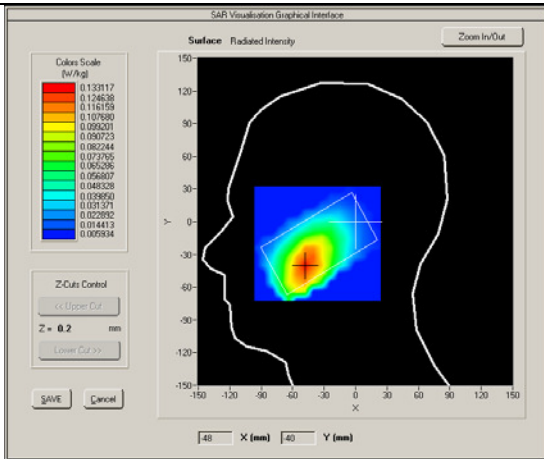
Test mode: GSM850, Middle channel (Right Head Cheek)

Product Description: Mobile Phone

Model: AX1010

Test Date: November 24th,2015

Medium(liquid type)	HSL_835
Frequency (MHz)	836.6000
Relative permittivity (real part)	41.3
Conductivity (S/m)	0.94
E-Field Probe	SN 27/15 EPGO262
Crest factor	8.0
Conversion Factor	1.90
Sensor-Surface	4mm
Area Scan	dx=8mm dy=8mm
Zoom Scan	5x5x7,dx=8mm dy=8mm dz=5mm
Variation (%)	-3.270000
SAR 10g (W/Kg)	0.091897
SAR 1g (W/Kg)	0.125365
SURFACE SAR	VOLUME SAR



Test mode: EGPRS850, Middle channel (Body Back Side)

Product Description: Mobile Phone

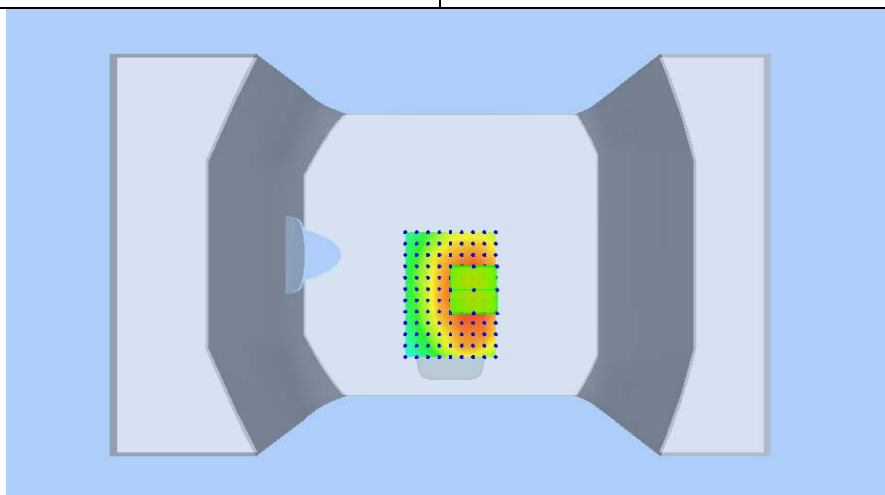
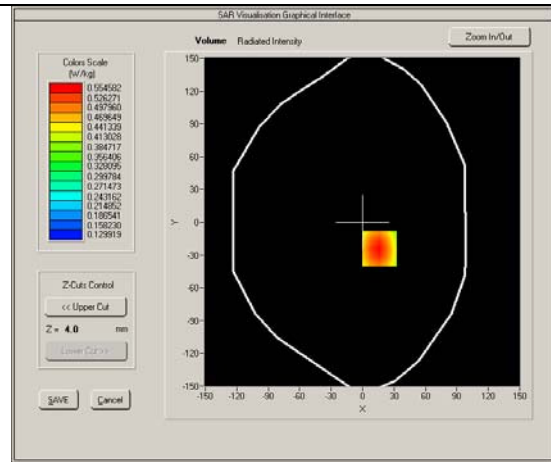
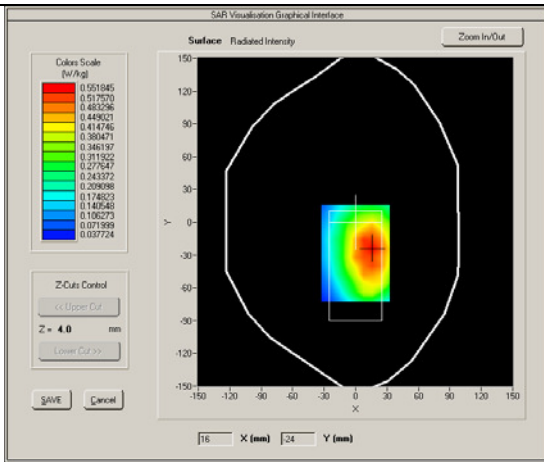
Model: AX1010

Test Date: November 24th, 2015

Medium(liquid type)	MSL_835
Frequency (MHz)	836.6000
Relative permittivity (real part)	55.22
Conductivity (S/m)	0.95
E-Field Probe	SN 27/15 EPGO262
Crest factor	2.0
Conversion Factor	1.97
Sensor-Surface	4mm
Area Scan	dx=8mm dy=8mm
Zoom Scan	5x5x7, dx=8mm dy=8mm dz=5mm
Variation (%)	-3.480000
SAR 10g (W/Kg)	0.387887
SAR 1g (W/Kg)	0.533400

SURFACE SAR

VOLUME SAR

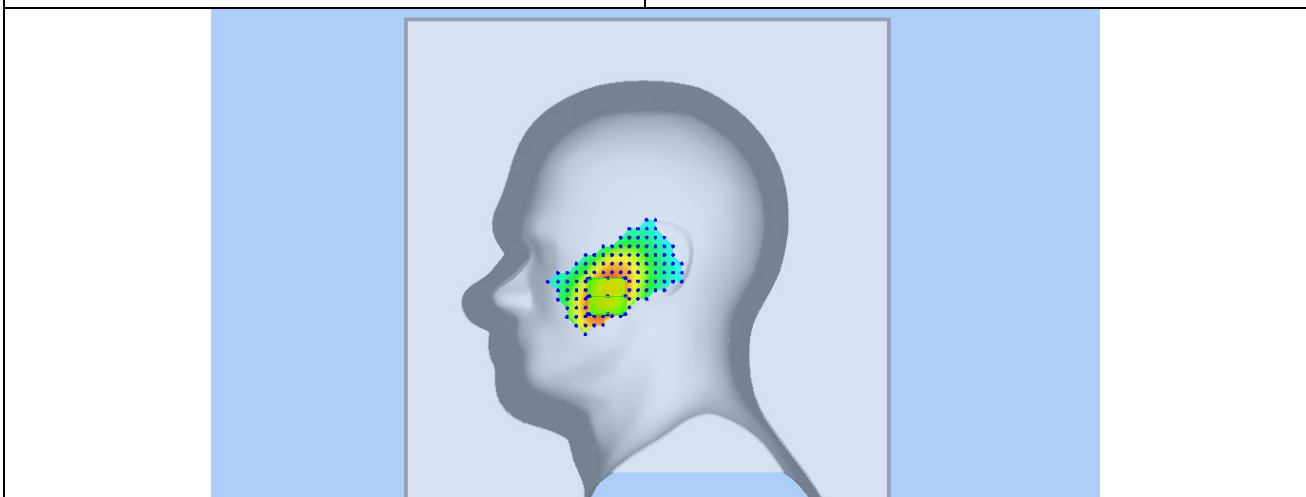
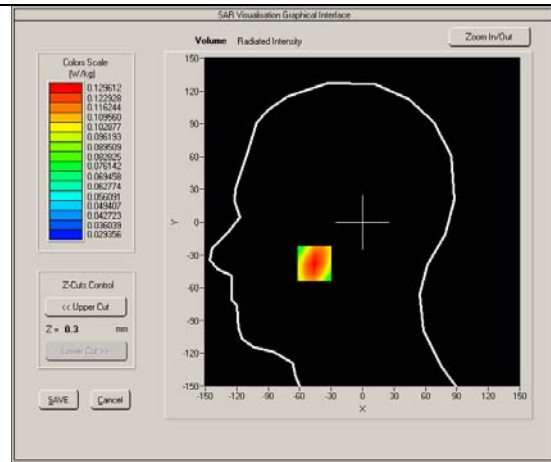
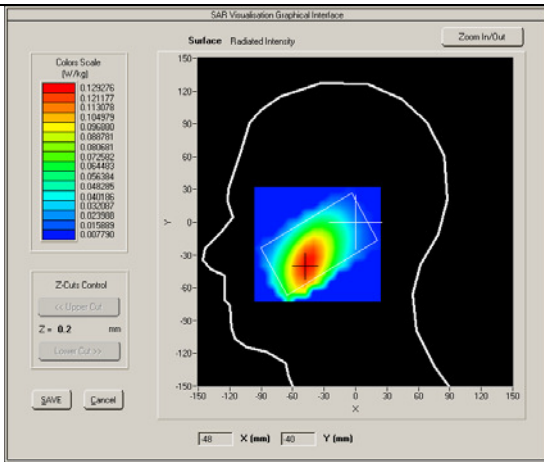


Test mode: WCDMA Band V, Middle channel (Right Head Cheek)
 Product Description: Mobile Phone
 Model: AX1010
 Test Date: November 24th,2015

Medium(liquid type)	HSL_835
Frequency (MHz)	836.600
Relative permittivity (real part)	41.3
Conductivity (S/m)	0.94
E-Field Probe	SN 27/15 EPGO262
Crest factor	1.0
Conversion Factor	1.90
Sensor-Surface	4mm
Area Scan	dx=8mm dy=8mm
Zoom Scan	5x5x7, dx=8mm dy=8mm dz=5mm
Variation (%)	2.430000
SAR 10g (W/Kg)	0.092628
SAR 1g (W/Kg)	0.124635

SURFACE SAR

VOLUME SAR



Test mode: WCDMA Band V, Mid channel (Body Back Side)

Product Description: Mobile Phone

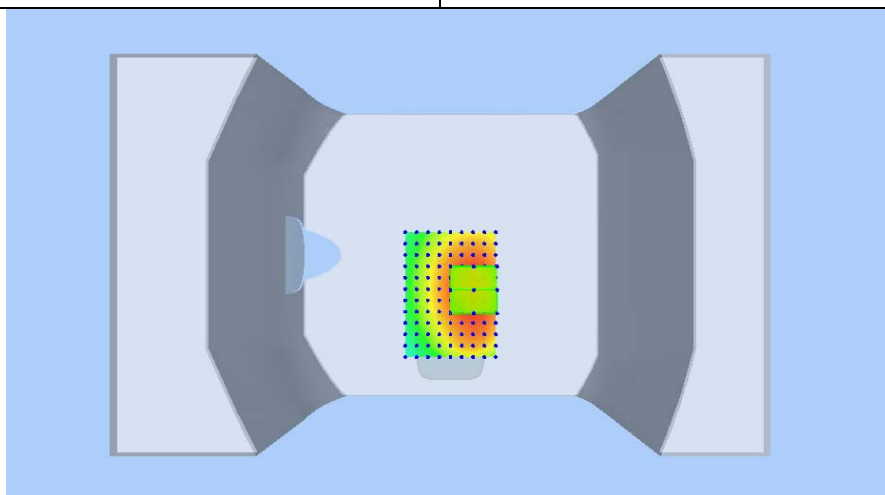
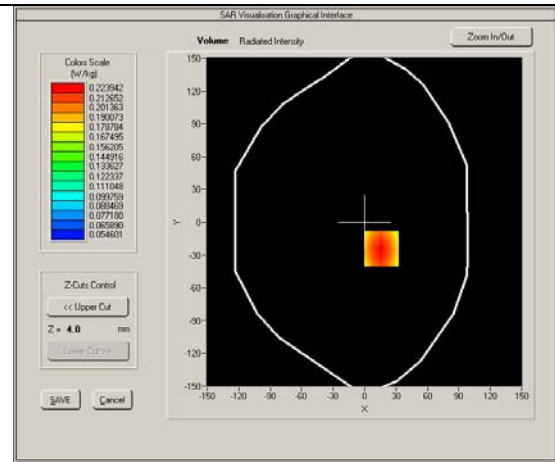
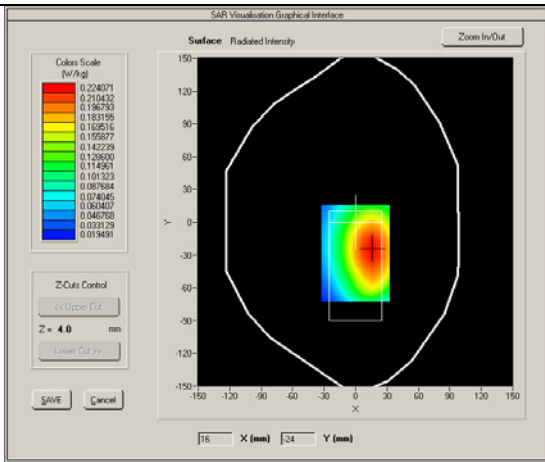
Model: AX1010

Test Date: November 24th,2015

Medium(liquid type)	MSL_835
Frequency (MHz)	835.0000
Relative permittivity (real part)	55.22
Conductivity (S/m)	0.95
E-Field Probe	SN 27/15 EPGO262
Crest factor	1.0
Conversion Factor	1.97
Sensor-Surface	4mm
Area Scan	dx=8mm dy=8mm
Zoom Scan	5x5x7, dx=8mm dy=8mm dz=5mm
Variation (%)	-0.180000
SAR 10g (W/Kg)	0.160174
SAR 1g (W/Kg)	0.216172

SURFACE SAR

VOLUME SAR



Test mode: PCS1900, Middle channel (Right Head Cheek)

Product Description: Mobile Phone

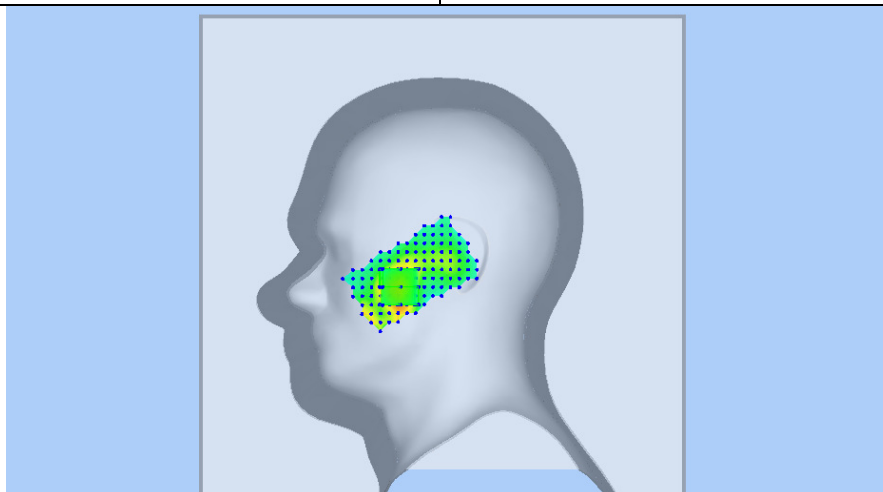
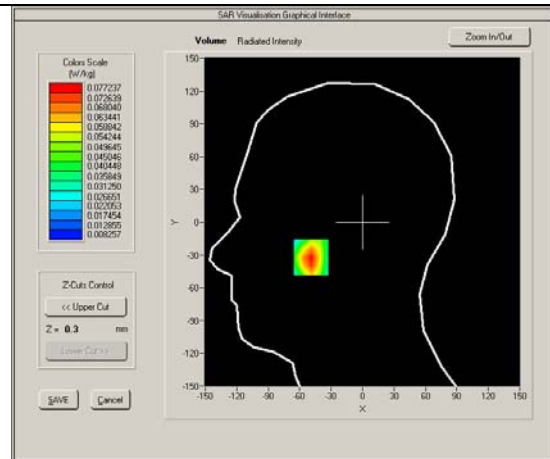
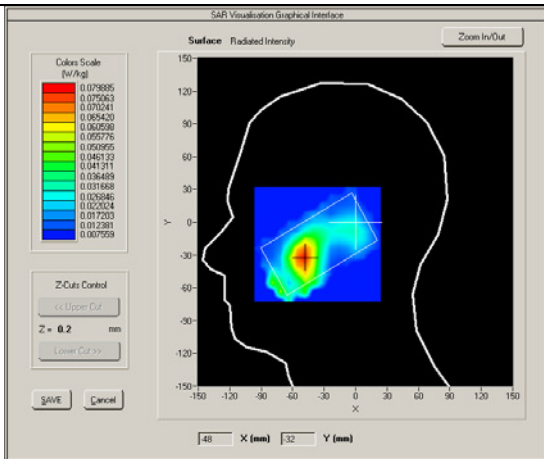
Model: AX1010

Test Date: November 26th, 2015

Medium (liquid type)	HSL_1900
Frequency (MHz)	1880.000
Relative permittivity (real part)	39.3
Conductivity (S/m)	1.42
E-Field Probe	SN 27/15 EPGO262
Crest factor	8.0
Conversion Factor	2.26
Sensor-Surface	4mm
Area Scan	dx=8mm dy=8mm
Zoom Scan	5x5x7, dx=8mm dy=8mm dz=5mm
Variation (%)	-2.850000
SAR 10g (W/Kg)	0.051727
SAR 1g (W/Kg)	0.073258

SURFACE SAR

VOLUME SAR



Test mode: EGPRS1900, Middle channel (Body Back Side)

Product Description: Mobile Phone

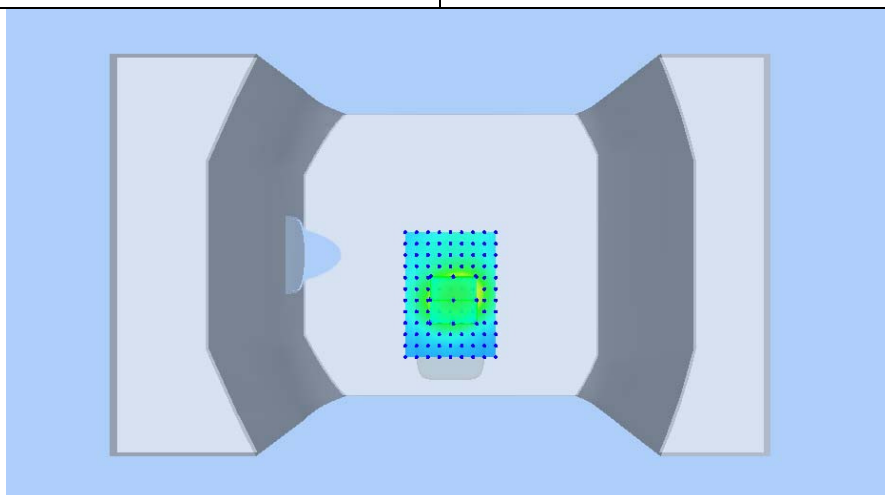
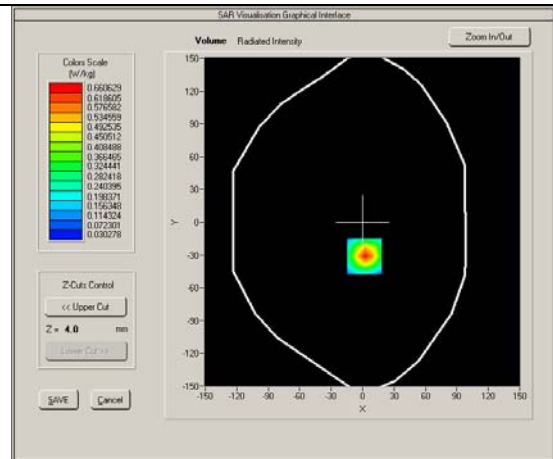
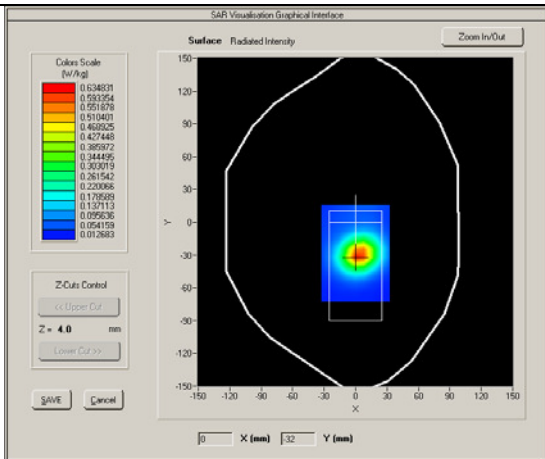
Model: AX1010

Test Date: November 26th,2015

Medium(liquid type)	MSL_1900
Frequency (MHz)	1850.200
Relative permittivity (real part)	53.32
Conductivity (S/m)	1.49
E-Field Probe	SN 27/15 EPGO262
Crest factor	2.0
Conversion Factor	2.32
Sensor-Surface	4mm
Area Scan	dx=8mm dy=8mm
Zoom Scan	5x5x7,dx=8mm dy=8mm dz=5mm
Variation (%)	-1.76000
SAR 10g (W/Kg)	0.403464
SAR 1g (W/Kg)	0.606112

SURFACE SAR

VOLUME SAR



Test mode: WCDMA Band II , Middle channel (Right Head Cheek)

Product Description: Mobile Phone

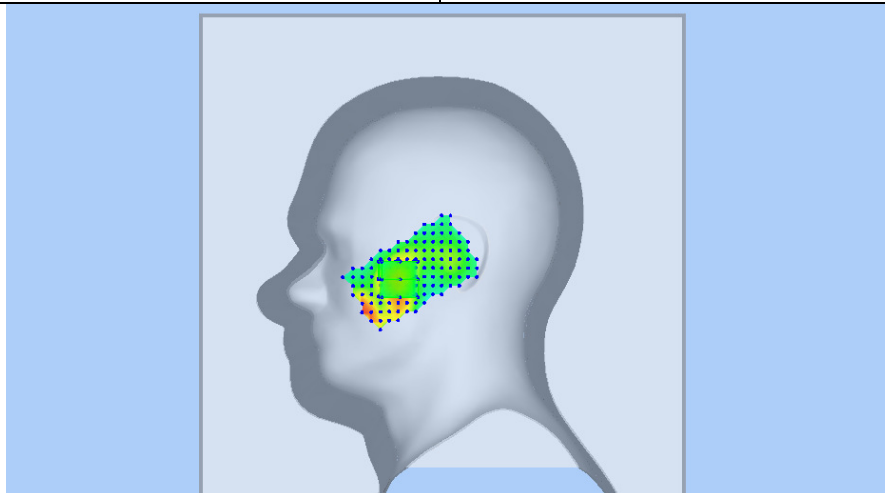
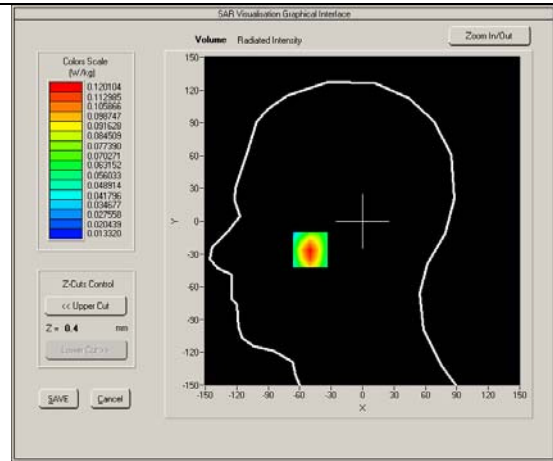
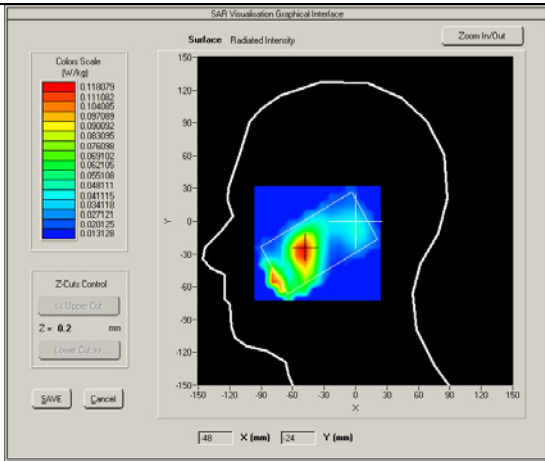
Model: AX1010

Test Date: November 26th,2015

Medium(liquid type)	HSL_1900
Frequency (MHz)	1880.000
Relative permittivity (real part)	39.3
Conductivity (S/m)	1.42
E-Field Probe	SN 27/15 EPGO262
Crest factor	1.0
Conversion Factor	2.26
Sensor-Surface	4mm
Area Scan	dx=8mm dy=8mm
Zoom Scan	5x5x7,dx=8mm dy=8mm dz=5mm
Variation (%)	-1.35000
SAR 10g (W/Kg)	0.086172
SAR 1g (W/Kg)	0.113261

SURFACE SAR

VOLUME SAR



Test mode: WCDMA Band II , Middle channel (Body Back Side)

Product Description: Mobile Phone

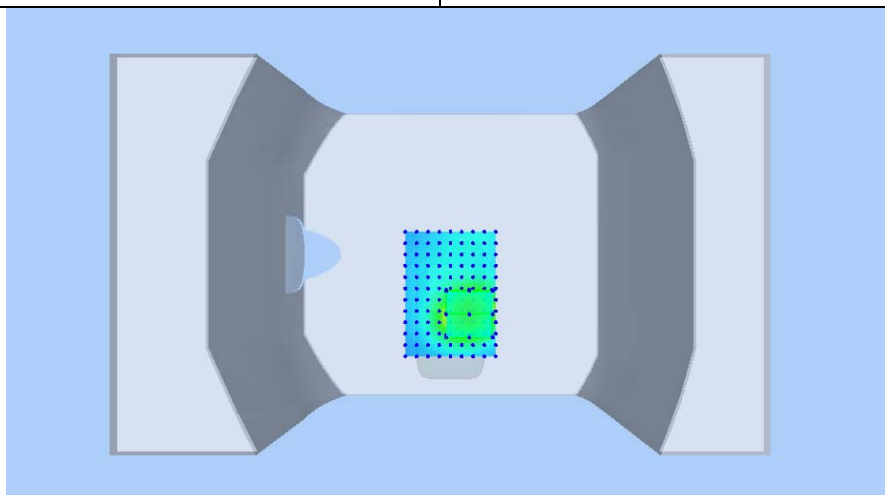
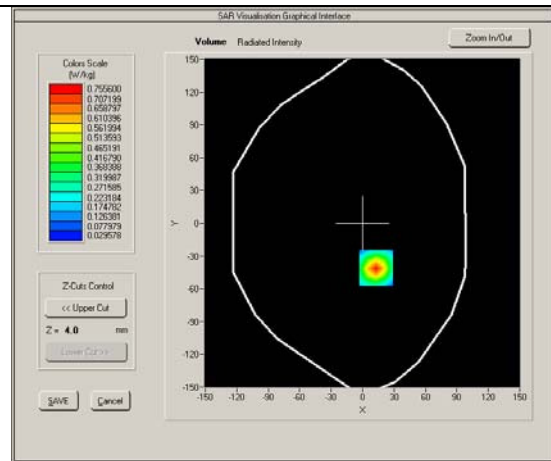
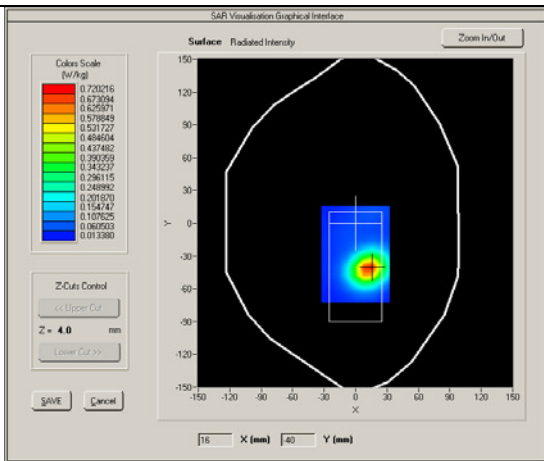
Model: AX1010

Test Date: November 26th,2015

Medium(liquid type)	MSL_1900
Frequency (MHz)	1880.000
Relative permittivity (real part)	53.32
Conductivity (S/m)	1.49
E-Field Probe	SN 27/15 EPGO262
Crest factor	1.0
Conversion Factor	2.32
Sensor-Surface	4mm
Area Scan	dx=8mm dy=8mm
Zoom Scan	5x5x7,dx=8mm dy=8mm dz=5mm
Variation (%)	-1.15000
SAR 10g (W/Kg)	0.413100
SAR 1g (W/Kg)	0.685162

SURFACE SAR

VOLUME SAR

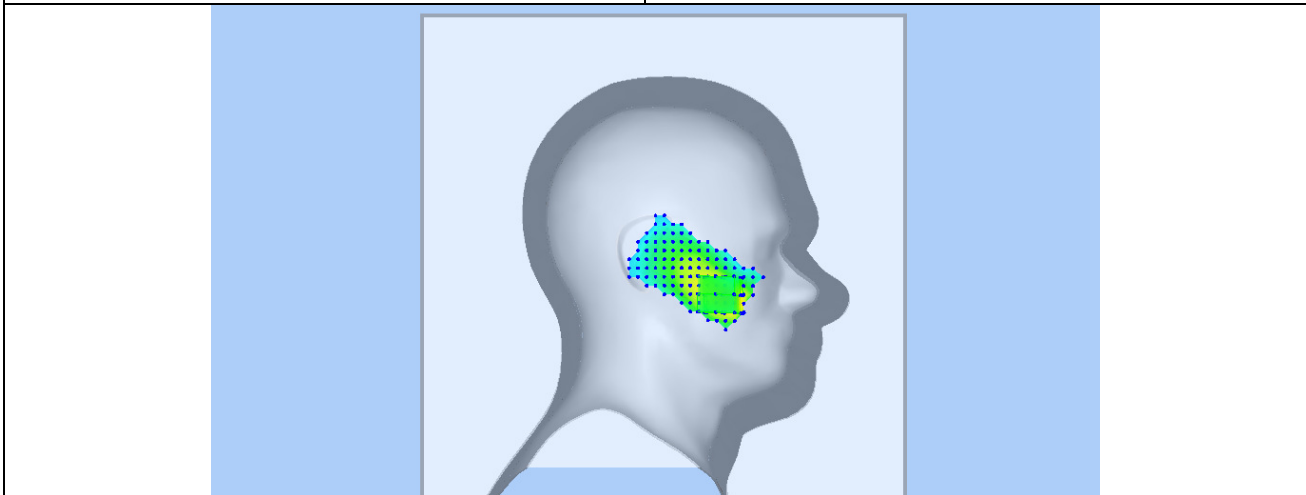
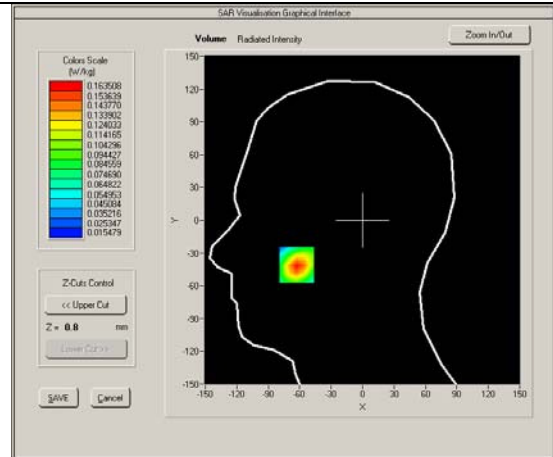
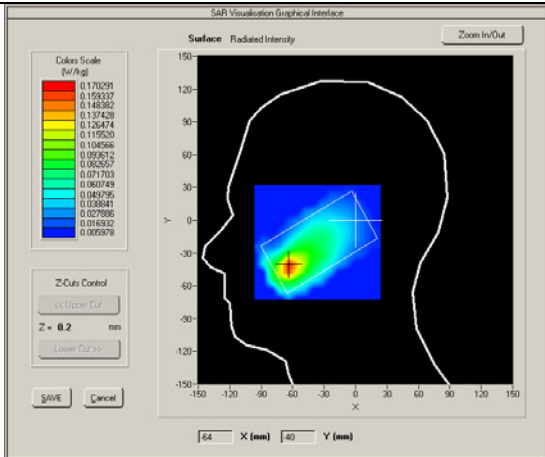


Test mode: LTE BAND 7, Middle channel (Left Head Cheek)
 Product Description: Mobile Phone
 Model: AX1010
 Test Date: November 30th,2015

Medium(liquid type)	HSL 2600
Frequency (MHz)	2535.0000
Relative permittivity (real part)	38.67
Conductivity (S/m)	1.94
E-Field Probe	SN 27/15 EPGO262
Crest factor	1.0
Conversion Factor	2.28
Sensor-Surface	4mm
Bandwidth(MHz)	20
RB Allocation	1
RB Offset	49
Area Scan	dx=8mm dy=8mm
Zoom Scan	5x5x7,dx=8mm dy=8mm dz=5mm
Variation (%)	0.070000
SAR 10g (W/Kg)	0.039654
SAR 1g (W/Kg)	0.059112

SURFACE SAR

VOLUME SAR



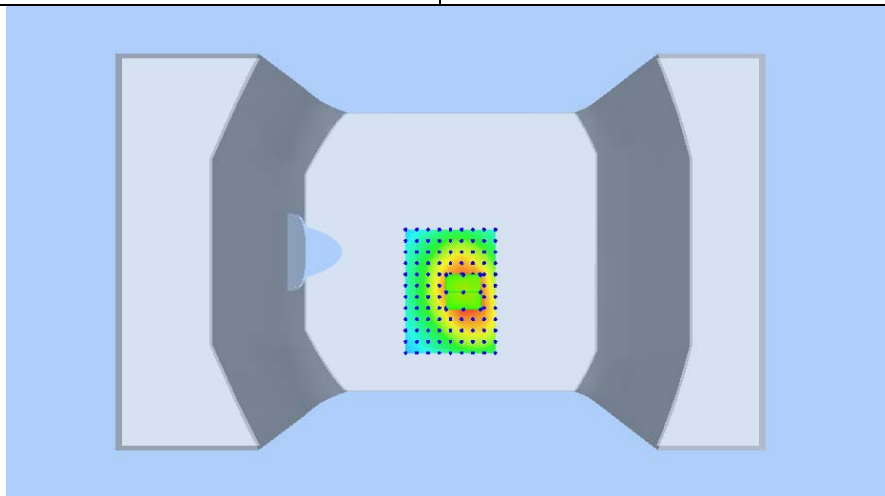
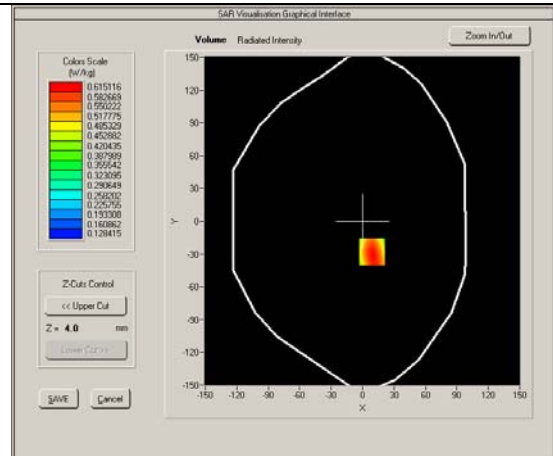
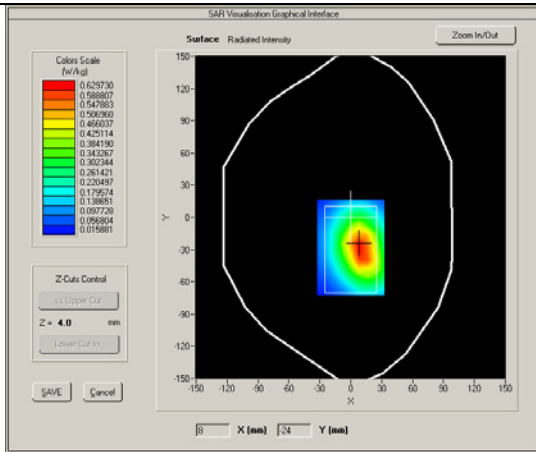
Test mode: LTE BAND 7, Mid channel (Body Down Side)

Product Description: Mobile Phone

Model: AX1010

Test Date: November 30th,2015

Medium(liquid type)	MSL 2600
Frequency (MHz)	2535.0000
Relative permittivity (real part)	51.77
Conductivity (S/m)	2.21
E-Field Probe	SN 27/15 EPGO262
Crest factor	1.0
Conversion Factor	2.34
Sensor-Surface	4mm
Bandwidth(MHz)	20
RB Allocation	1
RB Offset	49
Area Scan	dx=8mm dy=8mm
Zoom Scan	5x5x7,dx=8mm dy=8mm dz=5mm
Variation (%)	-1.62000
SAR 10g (W/Kg)	0.156527
SAR 1g (W/Kg)	0.316192
SURFACE SAR	VOLUME SAR

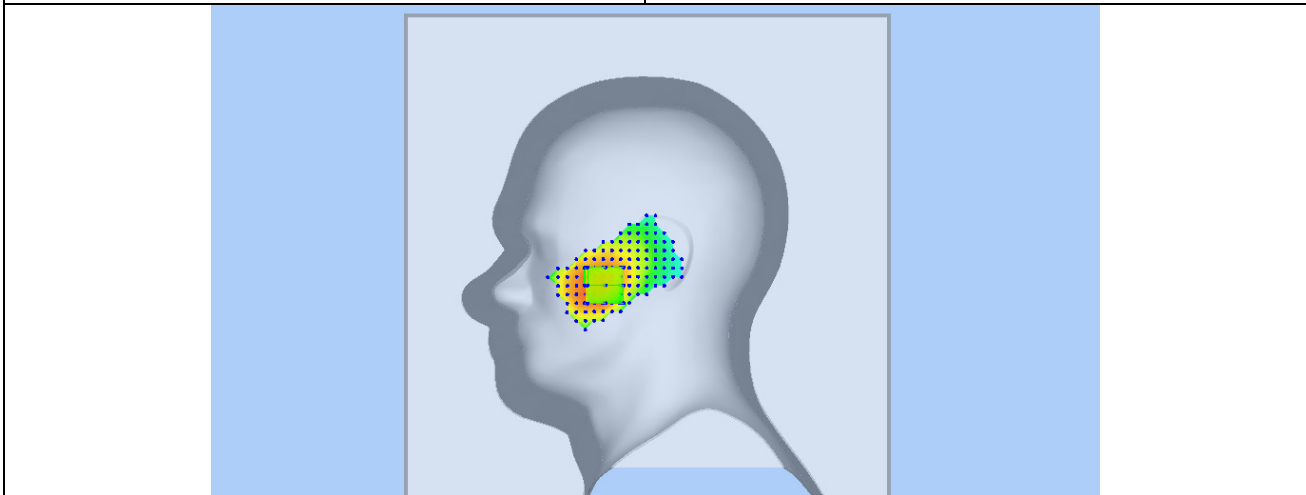
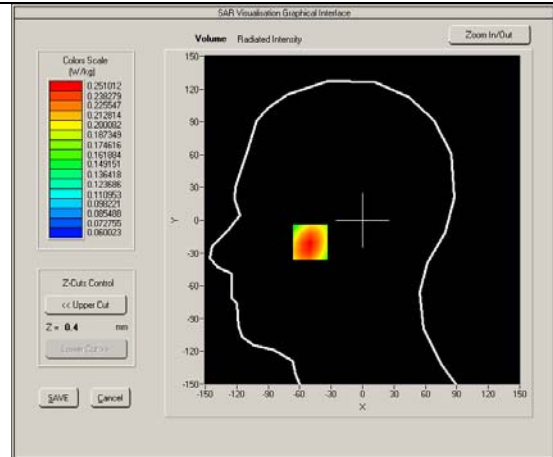
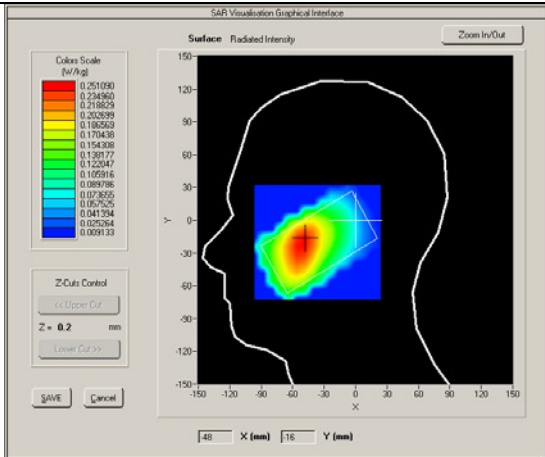


Test mode: LTE BAND 5, Middle channel (Right Head Cheek)
 Product Description: Mobile Phone
 Model: AX1010
 Test Date: November 24th,2015

Medium(liquid type)	HSL_835
Frequency (MHz)	836.5000
Relative permittivity (real part)	41.3
Conductivity (S/m)	0.94
E-Field Probe	SN 27/15 EPGO262
Crest factor	1.0
Conversion Factor	1.90
Sensor-Surface	4mm
Bandwidth(MHz)	10
RB Allocation	1
RB Offset	24
Area Scan	dx=8mm dy=8mm
Zoom Scan	5x5x7,dx=8mm dy=8mm dz=5mm
Variation (%)	1.040000
SAR 10g (W/Kg)	0.056522
SAR 1g (W/Kg)	0.081211

SURFACE SAR

VOLUME SAR



Test mode: LTE BAND 5, Mid channel (Body Down Side)

Product Description: Mobile Phone

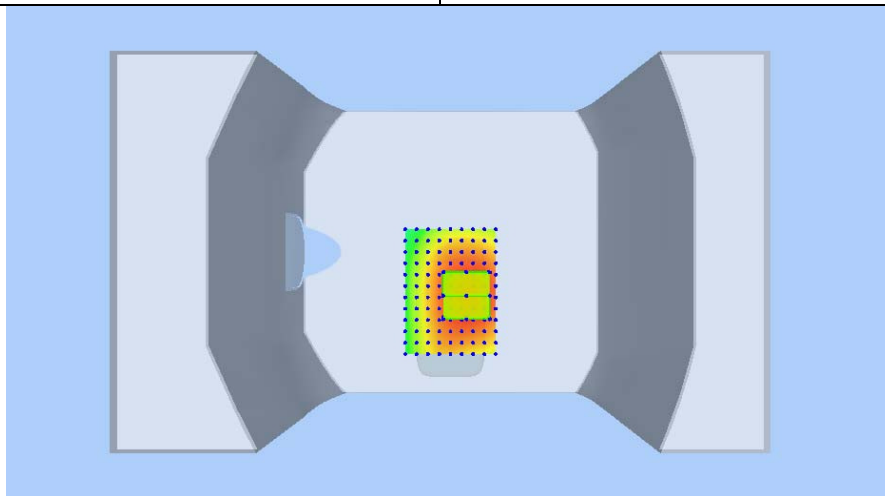
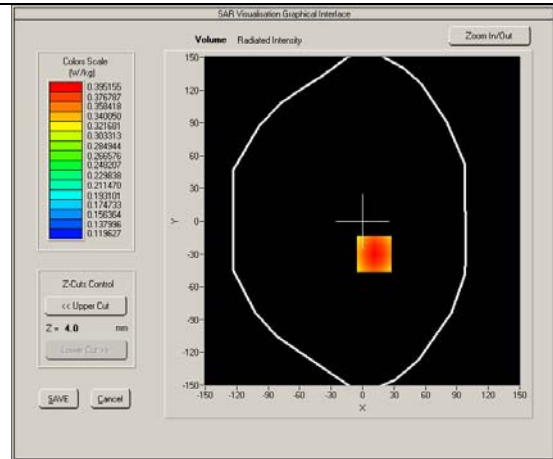
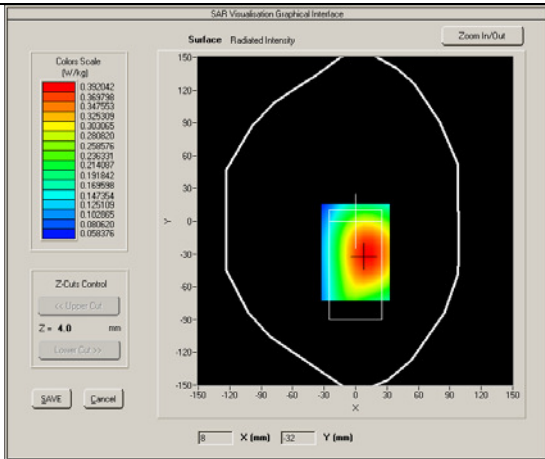
Model: AX1010

Test Date: November 11th,2015

Medium(liquid type)	MSL_835
Frequency (MHz)	836.5000
Relative permittivity (real part)	55.22
Conductivity (S/m)	0.95
E-Field Probe	SN 27/15 EPGO262
Crest factor	1.0
Conversion Factor	1.97
Sensor-Surface	4mm
Bandwidth(MHz)	10
RB Allocation	1
RB Offset	24
Area Scan	dx=8mm dy=8mm
Zoom Scan	5x5x7,dx=8mm dy=8mm dz=5mm
Variation (%)	-1.210000
SAR 10g (W/Kg)	0.167508
SAR 1g (W/Kg)	0.317081

SURFACE SAR

VOLUME SAR

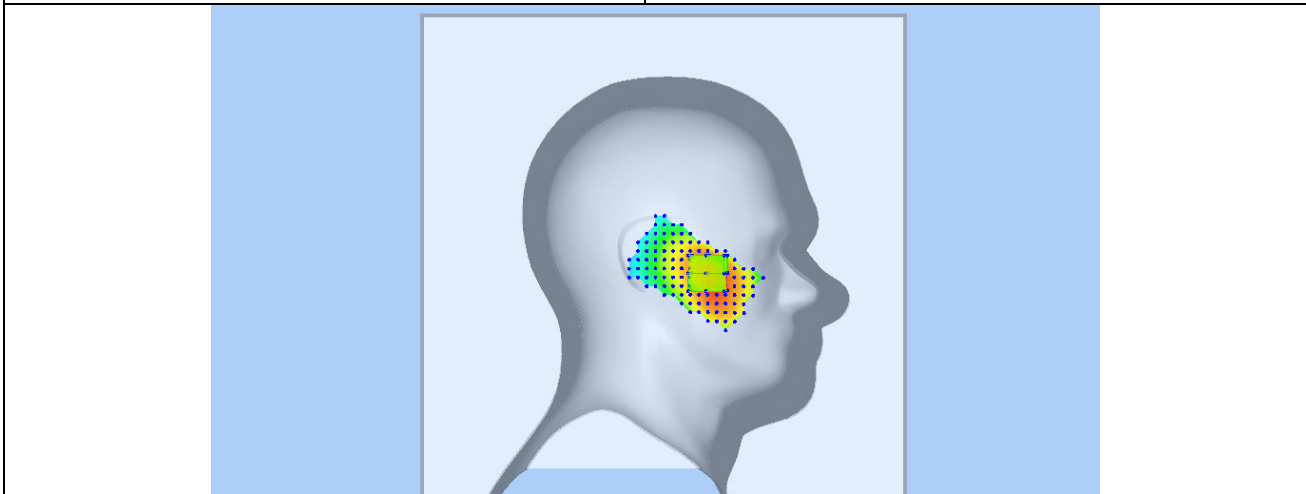
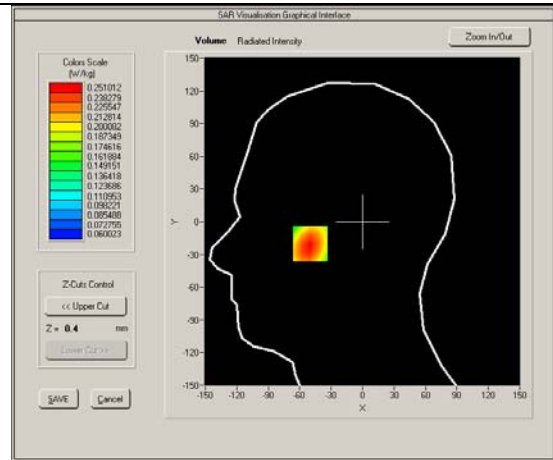
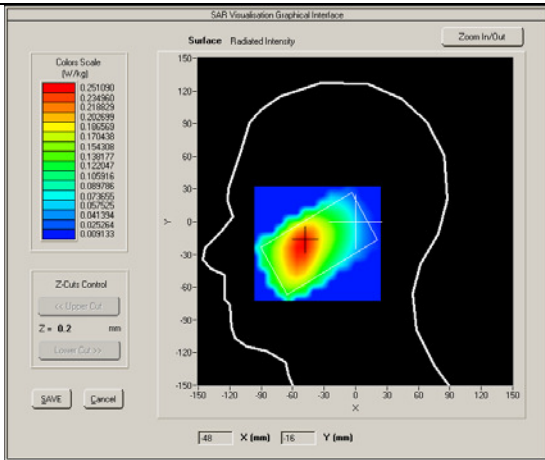


Test mode: LTE BAND 4, Middle channel (Left Head Cheek)
 Product Description: Mobile Phone
 Model: AX1010
 Test Date: November 10th,2015

Medium(liquid type)	HSL 1700
Frequency (MHz)	1732.5000
Relative permittivity (real part)	40.6
Conductivity (S/m)	1.38
E-Field Probe	SN 27/15 EPGO262
Crest factor	1.0
Conversion Factor	2.01
Sensor-Surface	4mm
Bandwidth(MHz)	20
RB Allocation	1
RB Offset	50
Area Scan	dx=8mm dy=8mm
Zoom Scan	5x5x7,dx=8mm dy=8mm dz=5mm
Variation (%)	-0.510000
SAR 10g (W/Kg)	0.036056
SAR 1g (W/Kg)	0.056213

SURFACE SAR

VOLUME SAR

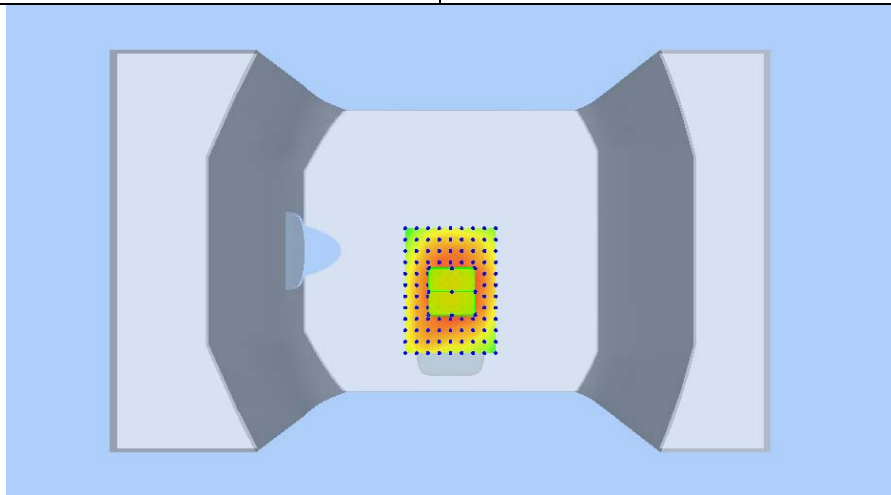
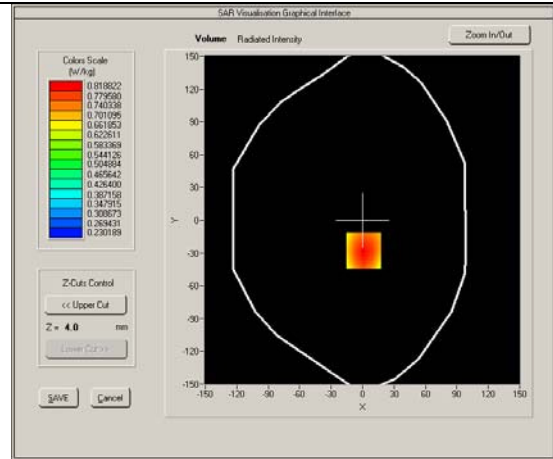
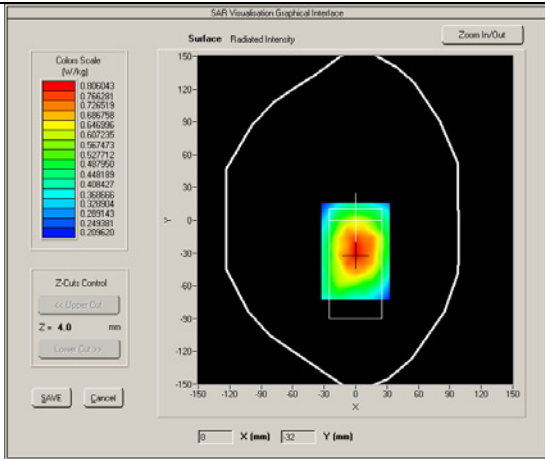


Test mode: LTE BAND 4, Mid channel (Body Down Side)
 Product Description: Mobile Phone
 Model: AX1010
 Test Date: November 10th,2015

Medium(liquid type)	MSL_1800
Frequency (MHz)	1732.5000
Relative permittivity (real part)	53.24
Conductivity (S/m)	1.48
E-Field Probe	SN 27/15 EPGO262
Crest factor	1.0
Conversion Factor	2.05
Sensor-Surface	4mm
Bandwidth(MHz)	20
RB Allocation	1
RB Offset	50
Area Scan	dx=8mm dy=8mm
Zoom Scan	5x5x7,dx=8mm dy=8mm dz=5mm
Variation (%)	-1.52000
SAR 10g (W/Kg)	0.142654
SAR 1g (W/Kg)	0.291001

SURFACE SAR

VOLUME SAR

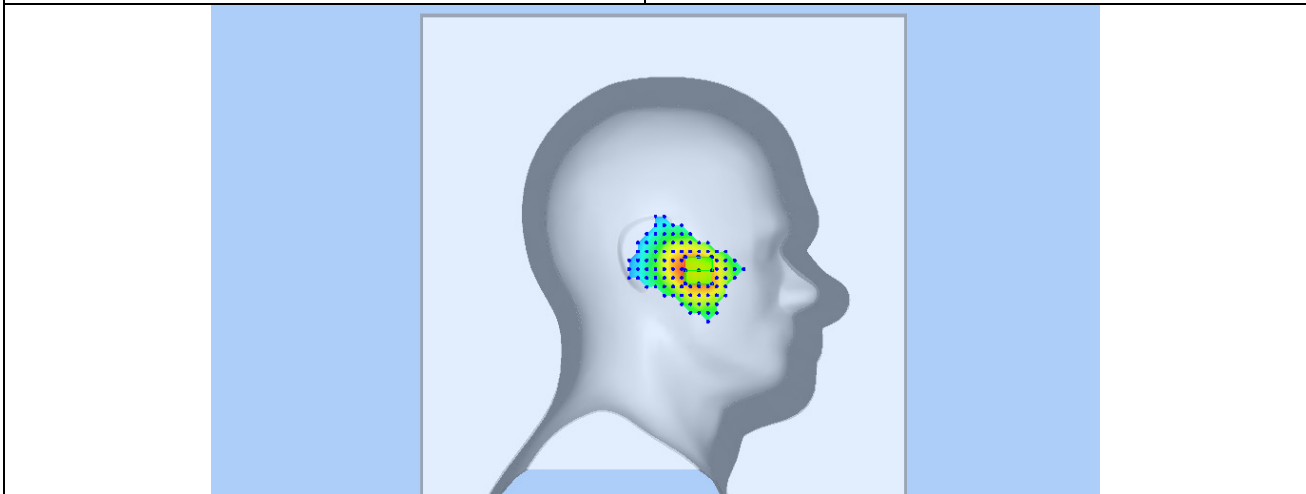
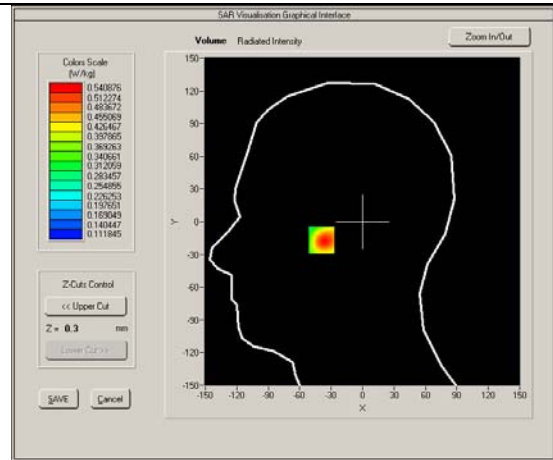
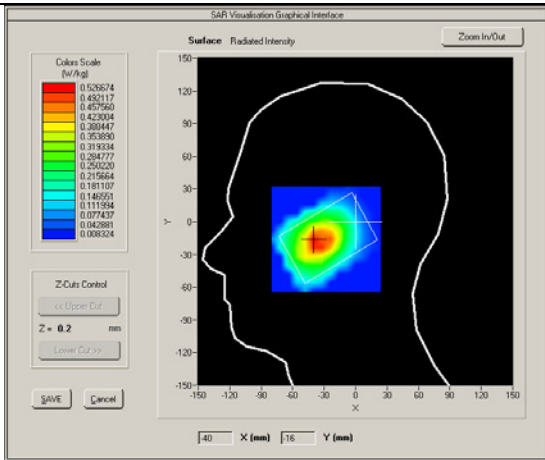


Test mode: LTE BAND 2, Middle channel (Left Head Cheek)
 Product Description: Mobile Phone
 Model: AX1010
 Test Date: November 26th,2015

Medium(liquid type)	HSL 1900
Frequency (MHz)	1880.0000
Relative permittivity (real part)	39.3
Conductivity (S/m)	1.42
E-Field Probe	SN 27/15 EPGO262
Crest factor	1.0
Conversion Factor	2.26
Sensor-Surface	4mm
Bandwidth(MHz)	20
RB Allocation	1
RB Offset	49
Area Scan	dx=8mm dy=8mm
Zoom Scan	5x5x7,dx=8mm dy=8mm dz=5mm
Variation (%)	-0.330000
SAR 10g (W/Kg)	0.037216
SAR 1g (W/Kg)	0.068113

SURFACE SAR

VOLUME SAR



Test mode: LTE BAND 2, Mid channel (Body Down Side)
 Product Description: Mobile Phone
 Model: AX1010
 Test Date: November 26th,2015

Medium(liquid type)	MSL_1900
Frequency (MHz)	1880.0000
Relative permittivity (real part)	53.32
Conductivity (S/m)	1.49
E-Field Probe	SN 27/15 EPGO262
Crest factor	1.0
Conversion Factor	2.32
Sensor-Surface	4mm
Bandwidth(MHz)	20
RB Allocation	1
RB Offset	49
Area Scan	dx=8mm dy=8mm
Zoom Scan	5x5x7,dx=8mm dy=8mm dz=5mm
Variation (%)	-1.62000
SAR 10g (W/Kg)	0.115451
SAR 1g (W/Kg)	0.307621

SURFACE SAR

VOLUME SAR

