

Y173 (W121) Antenna Test Report

Customers: Innovatech

Project name: Y173 (W121)

Y173 project appearance



Y173 project match

The original match of the mainboard is not moved

- The original match of the mainboard is not moved

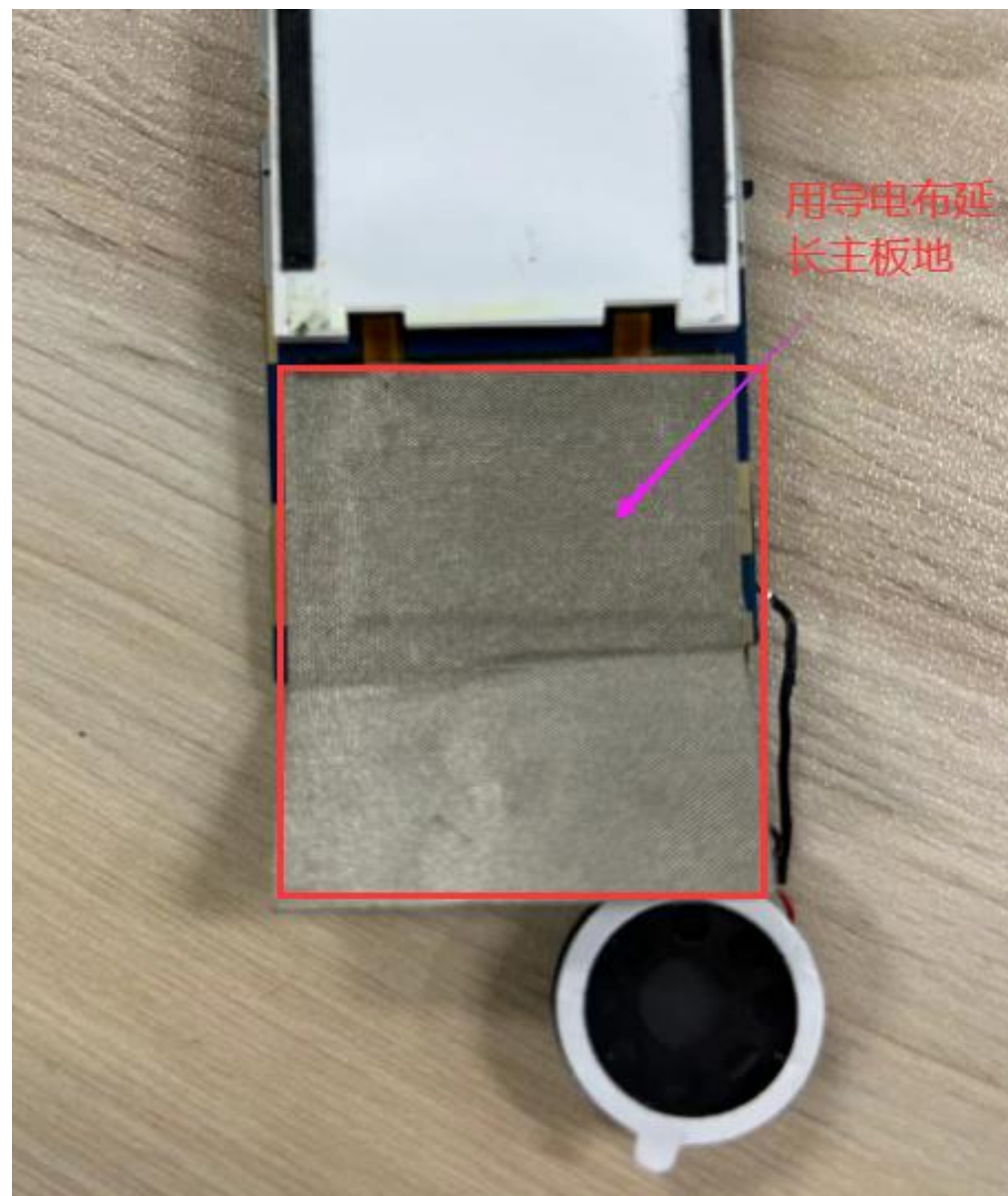
Plate type	The whole machine						
Antenna Overview	The main antenna	Frequency band		Antenna status	Antenna form	Design area	匹配改动
		2G	G2/3/5/8/W2/4/5/8	Gold-plated FPC	PIFA	The bottom of the phone	未改
		3G					
		4G	N/A				
		5G	N/A				
	Other antennas	BT/WIFI	2.4G				
		GPS	N/A				
		Diversity	N/A				
Prototype status	Y173 Debugging machine		Environmental treatment				

YZS ANT TRP&TIS parameter Summary of Y173

BAND	GSM900			DCS1800		
CHANNEL	1	62	124	512	698	885
TRP (dBm)	27.89	28.23	27.75	24.69	25.12	25.48
TIS (dBm)			-102.8			-102.8
BAND	GSM850			PCS1900		
CHANNEL	128	190	251	512	661	810
TRP (dBm)	26.51	27.63	27.89	25.23	25.02	24.16
TIS (dBm)			-103.7			-101.6
BAND	WCDMA1900			WCDMA1700		
CHANNEL	9262	9400	9538	1312	1413	1513
TRP (dBm)	17.68	17.18	17.06	16.51	17.34	17.53
TIS (dBm)			-102.5			-101.2
BAND	WCDMA850			WCDMA900		
CHANNEL	4132	4183	4233	2712	2787	2863
TRP (dBm)	17.52	18.21	18.61	17.85	17.76	17.62
TIS (dBm)			-103.8			-103.2

YZS ANT TRP&TIS parameter Summary of Y173-Motherboard conduction						
BAND	GSM900			DCS1800		
CHANNEL	1	62	124	512	698	885
TRP (dBm)	32.22	32.16	32.13	29.37	29.24	29.45
TIS (dBm)			-107.5			-106
BAND	GSM850			PCS1900		
CHANNEL	128	190	251	512	661	810
TRP (dBm)	32.36	32.33	32.9	29.11	29.06	29.15
TIS (dBm)			-108.5			-108.5
BAND	WCDMA1900			WCDMA1700		
CHANNEL	9262	9400	9538	1312	1413	1513
TRP (dBm)	22.05	21.96	22.08	22.03	22.23	22.17
TIS (dBm)			-110			-109.5
BAND	WCDMA850			WCDMA900		
CHANNEL	4132	4183	4233	2712	2787	2863
TRP (dBm)	22.21	22.23	22.27	22.18	22.23	22.17
TIS (dBm)			-108			-108

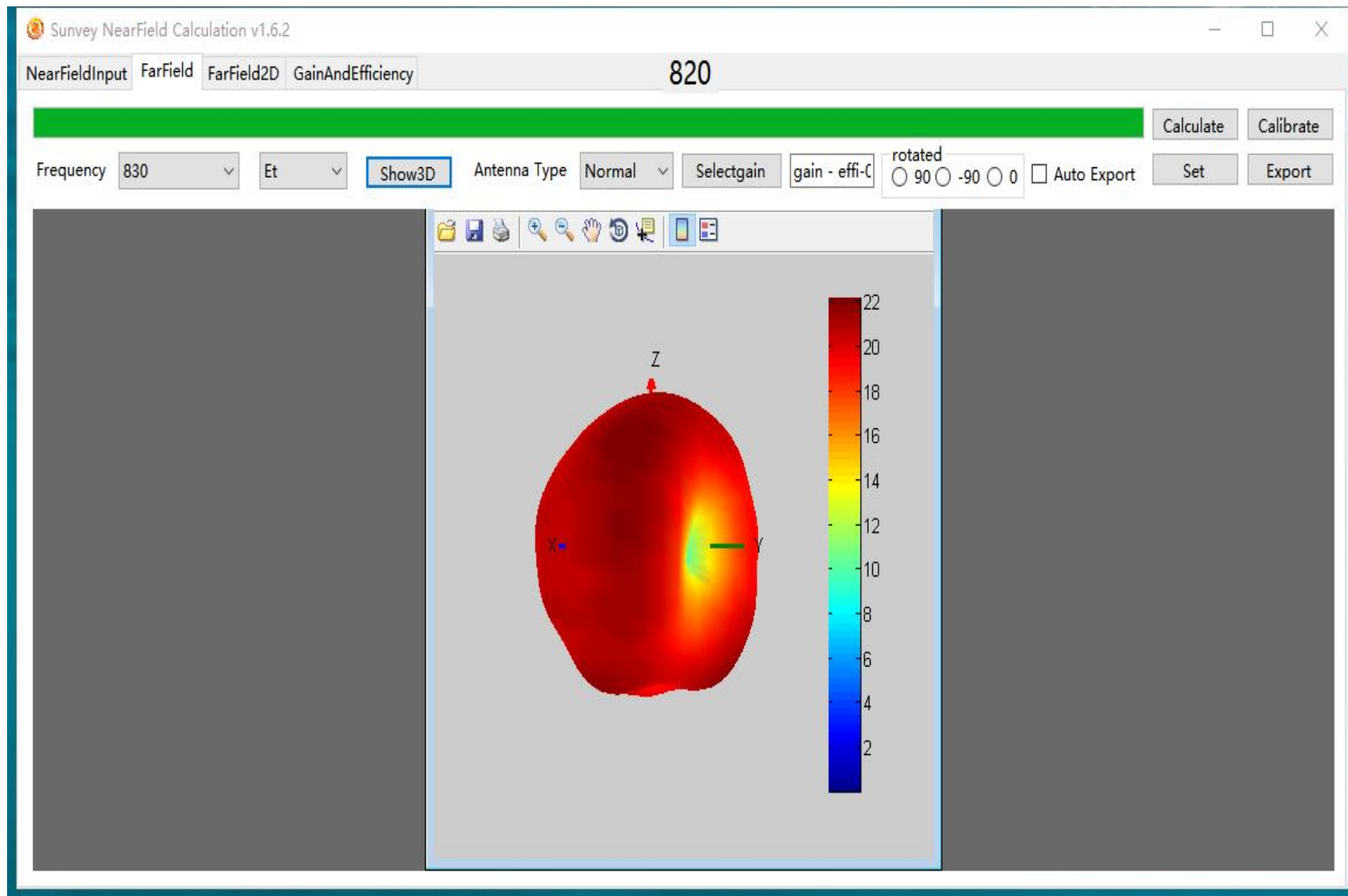
Environmental treatment



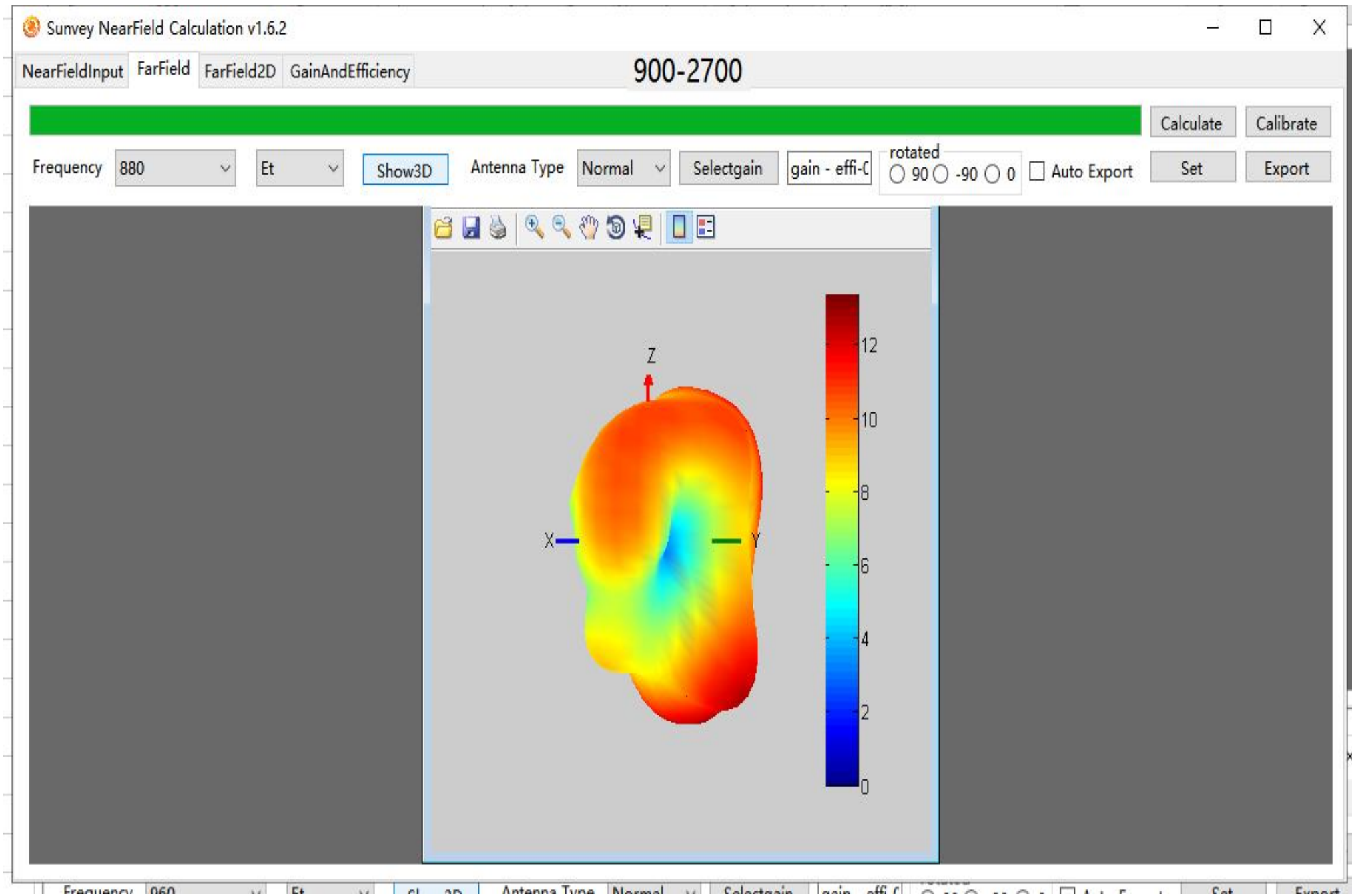
Antenna gain

Y173 Antenna Gain	
频段Frequency	增益Gain
GSM850	-0.53
EGSM900	-0.47
DCS1800	-0.32
PCS1900	-0.35
W900	-0.47
W1700	-0.33
W850	-0.53
W1900	-0.35
BT	-0.13
	以上单位为：dBi

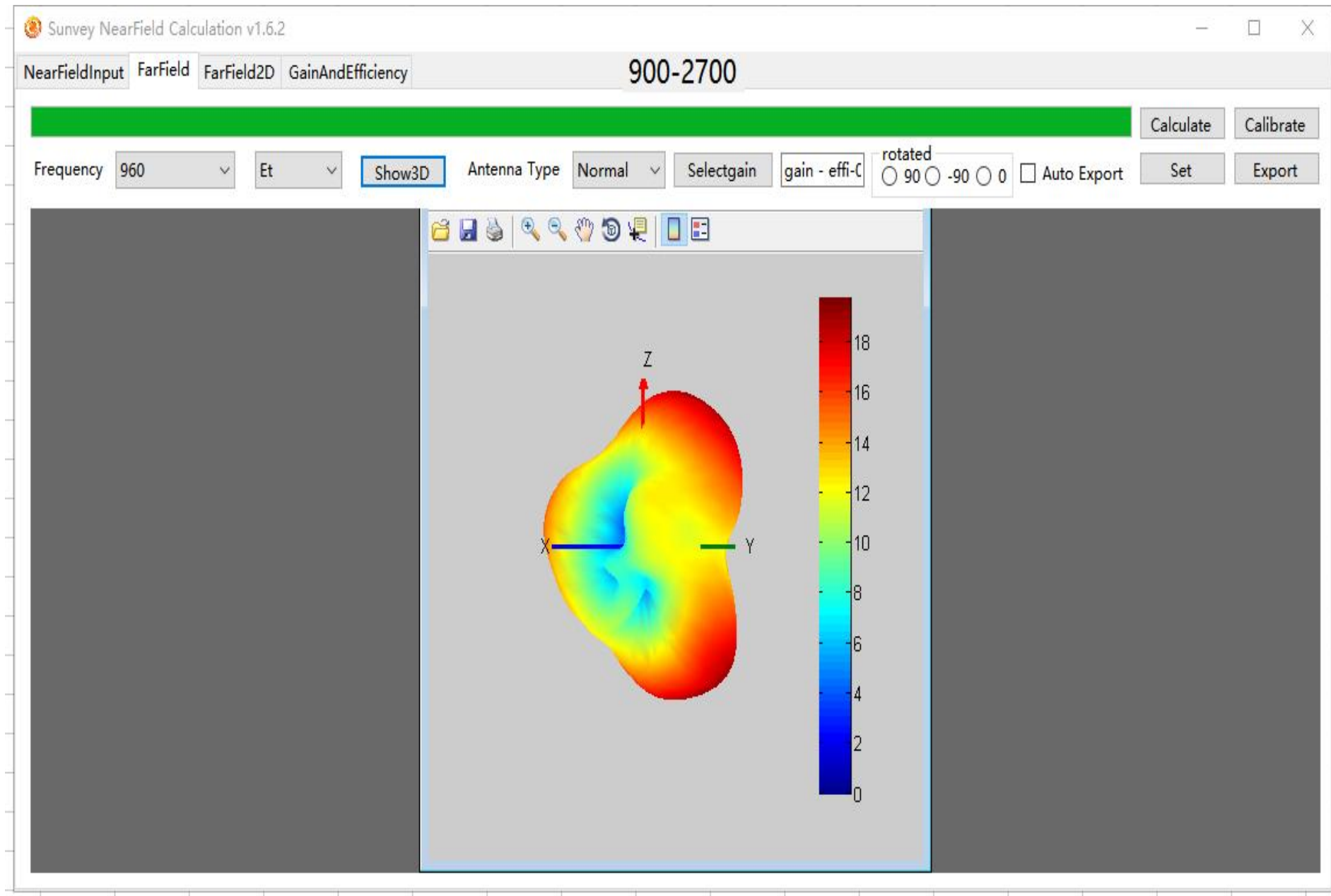
Main antenna apple diagramApple chart



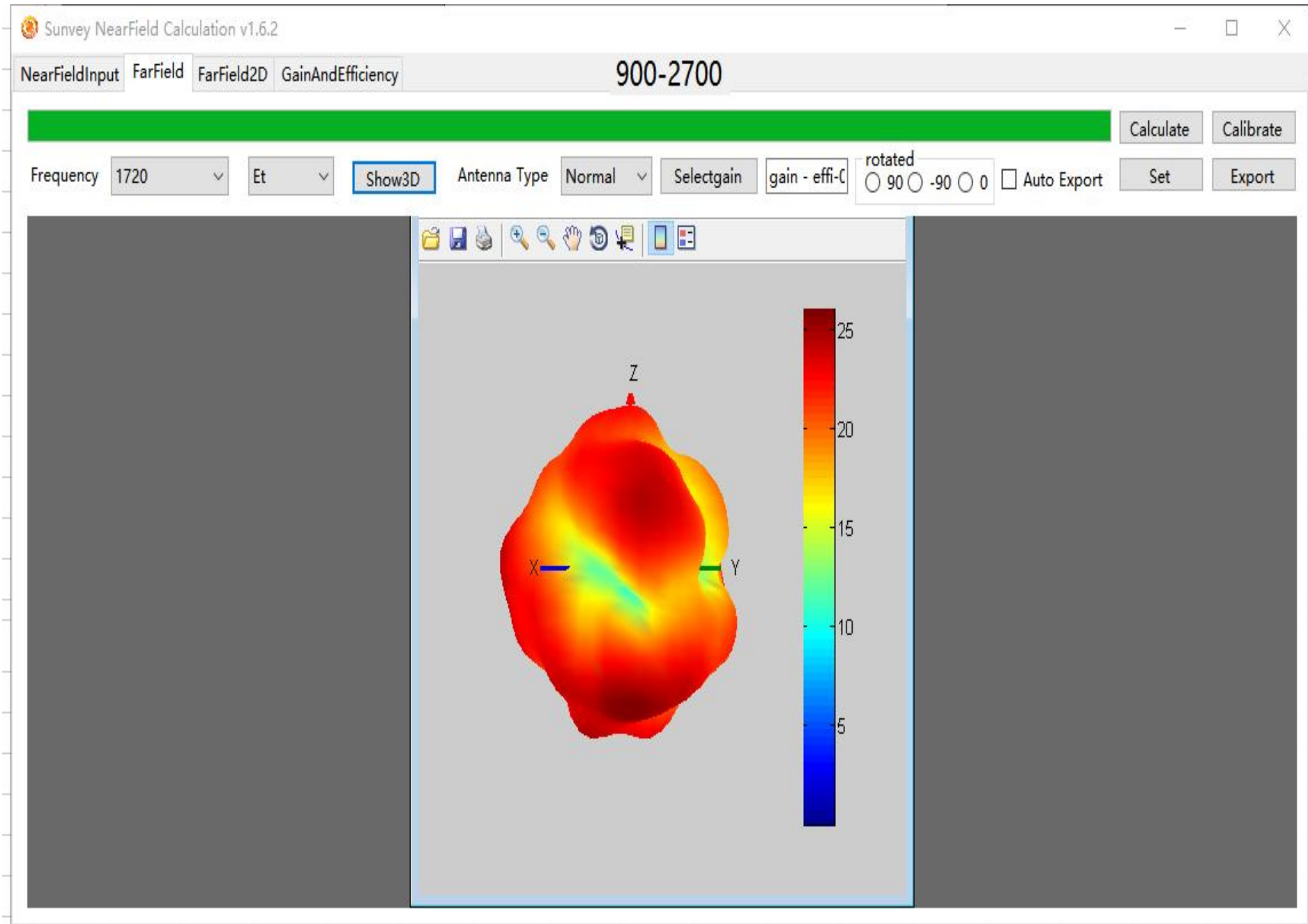
Main antenna apple diagramApple chart



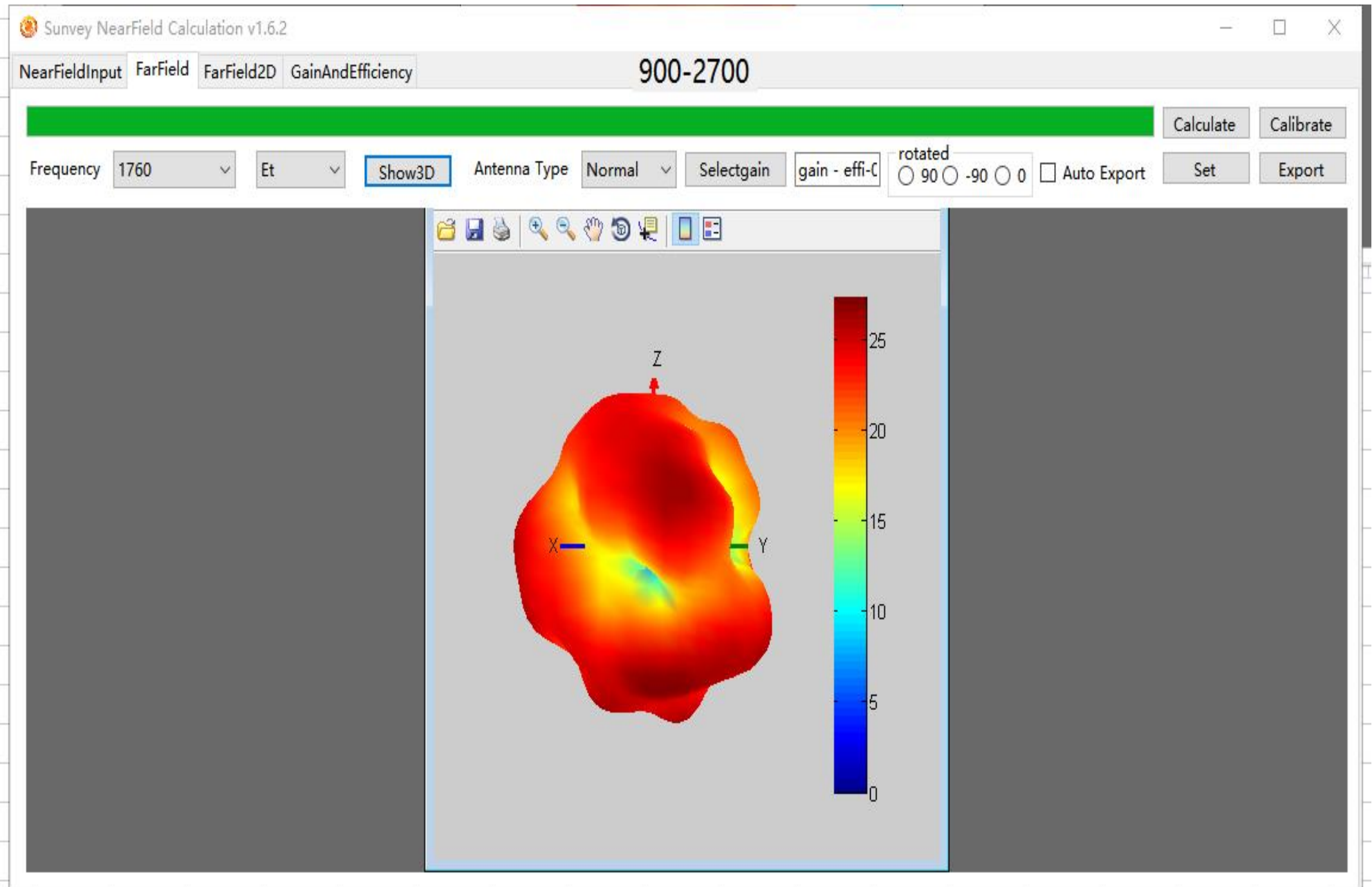
Main antenna apple diagramApple chart



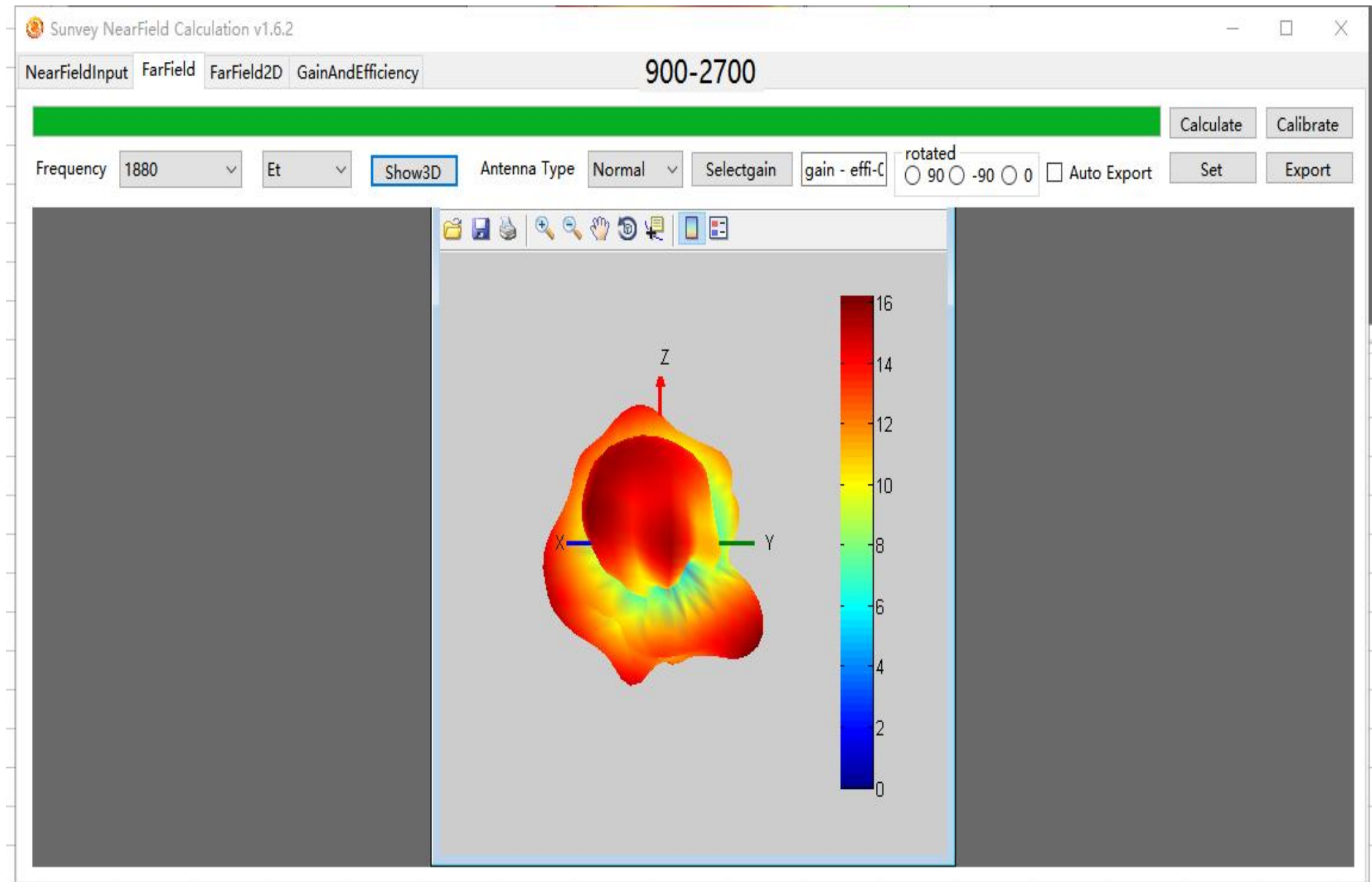
Main antenna apple diagramApple chart



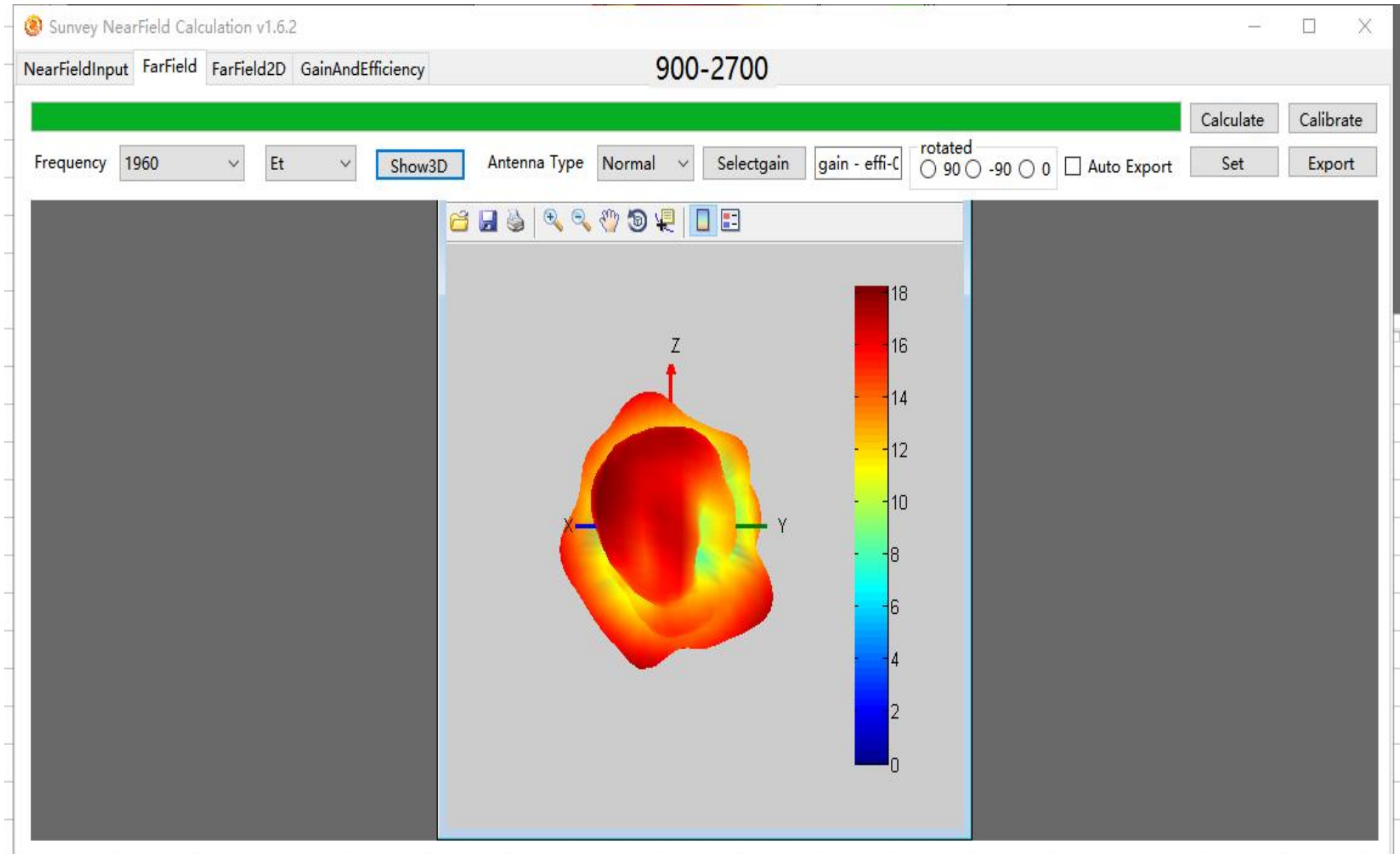
Main antenna apple diagramApple chart



Main antenna apple diagramApple chart

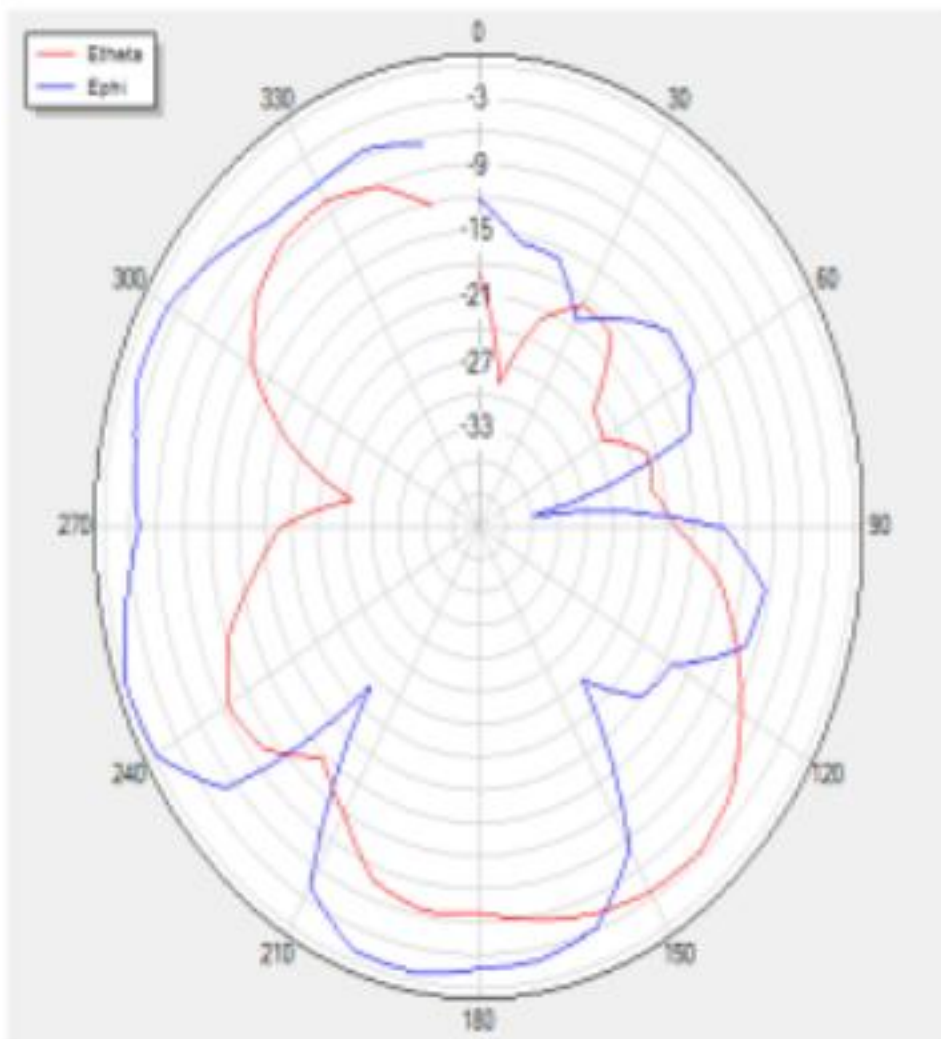


Main antenna apple diagramApple chart

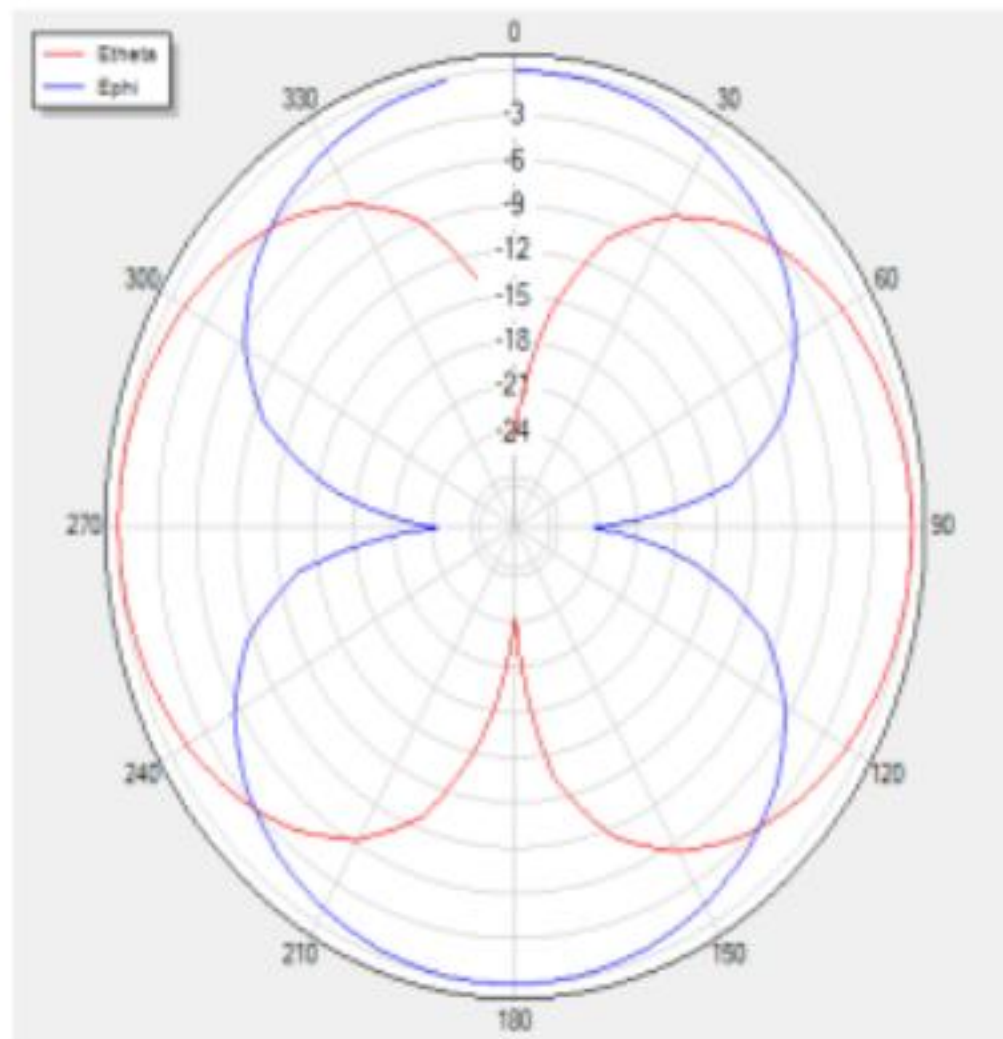


蓝牙波瓣图

H Theta=90 freq=2400MHz



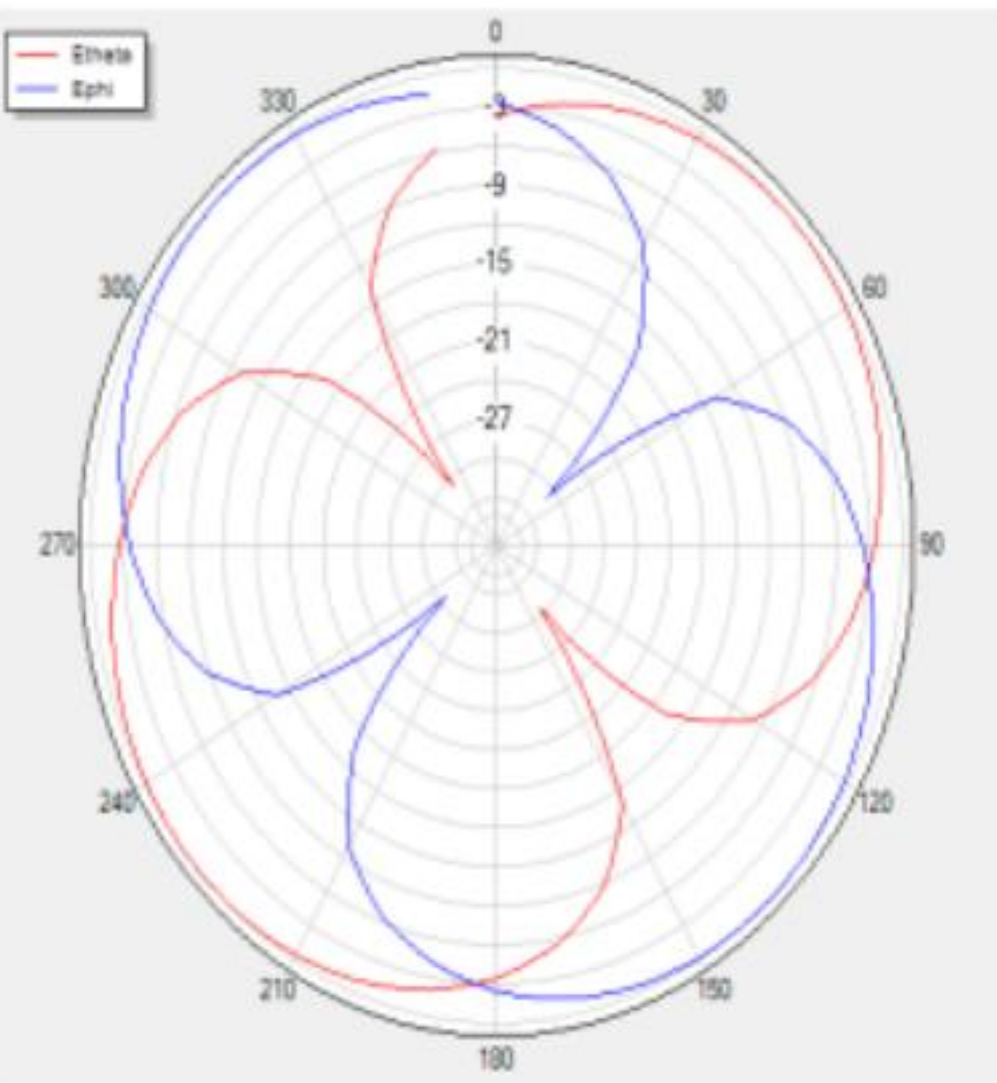
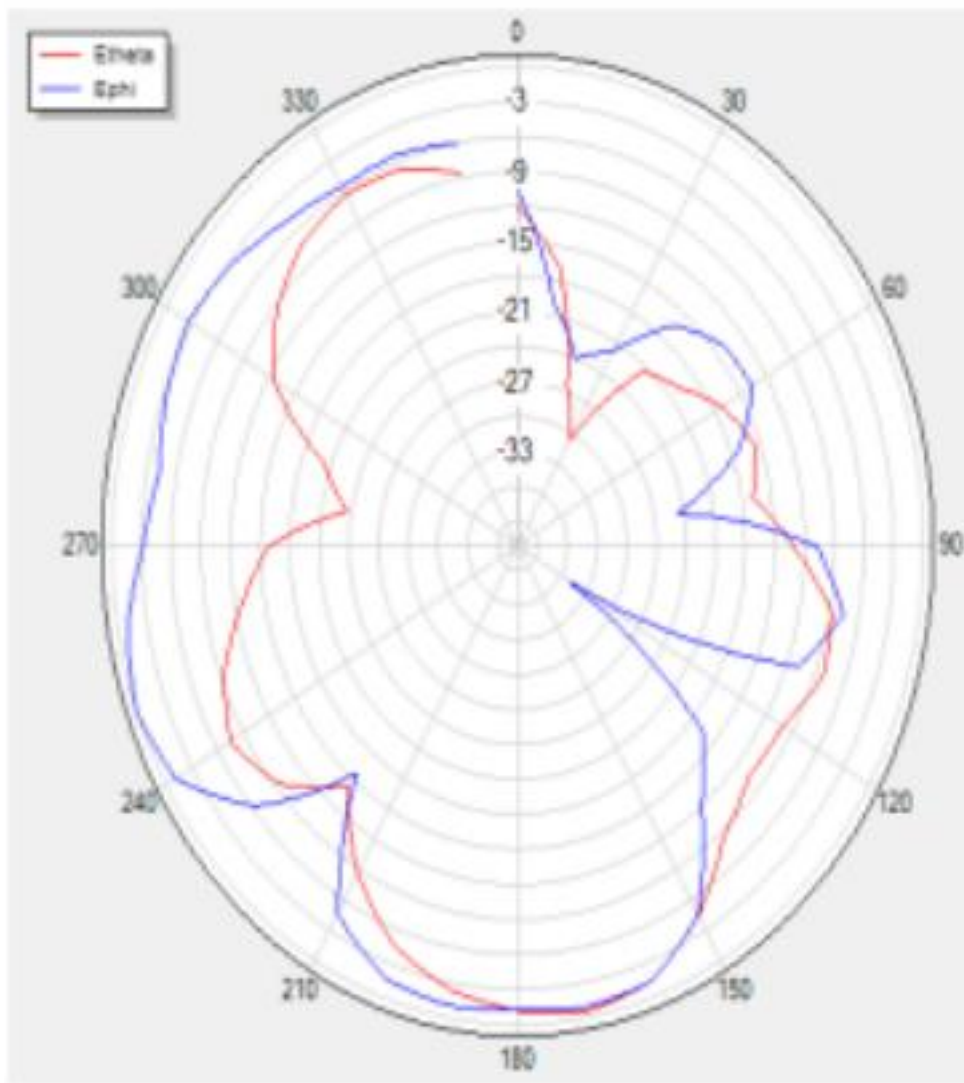
H Theta=0 freq=2400MHz



蓝牙波瓣图

H Theta=90 freq=2450MHz

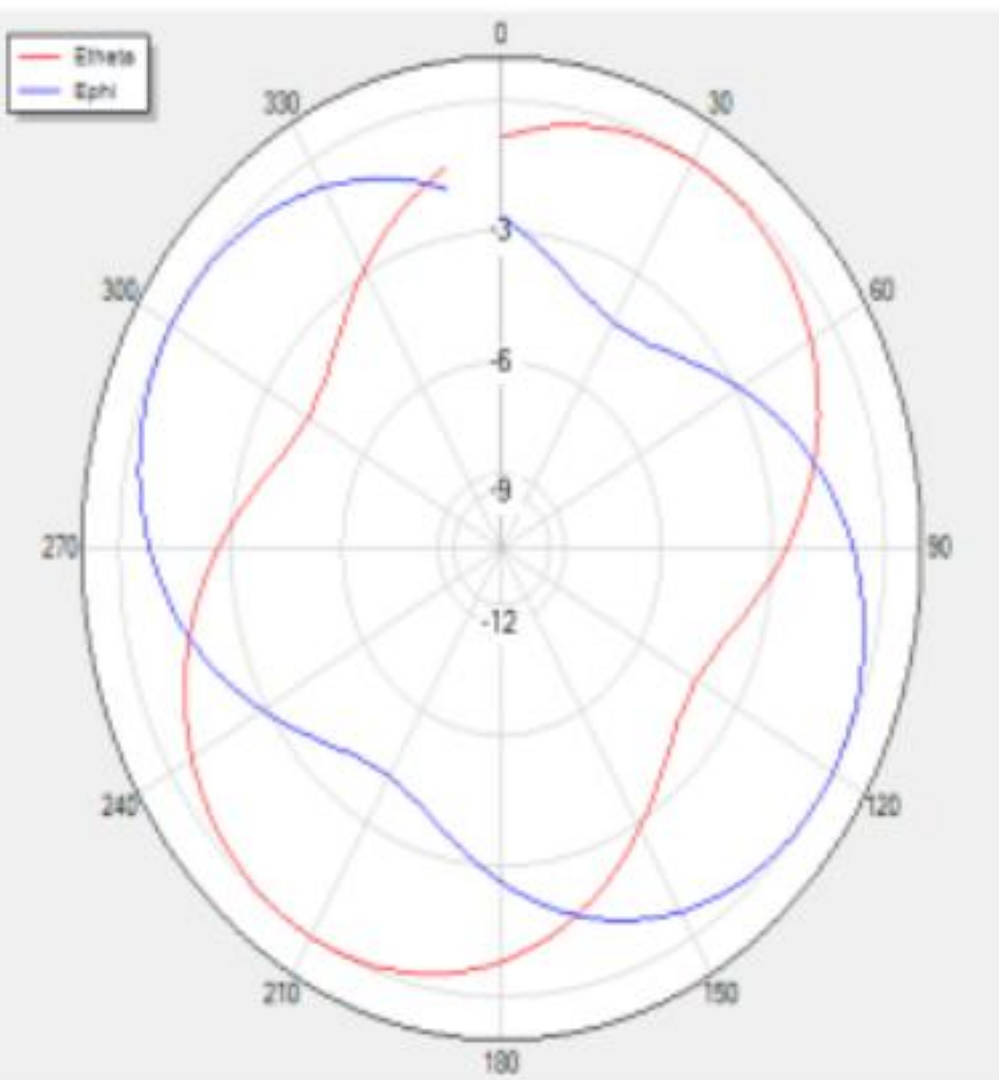
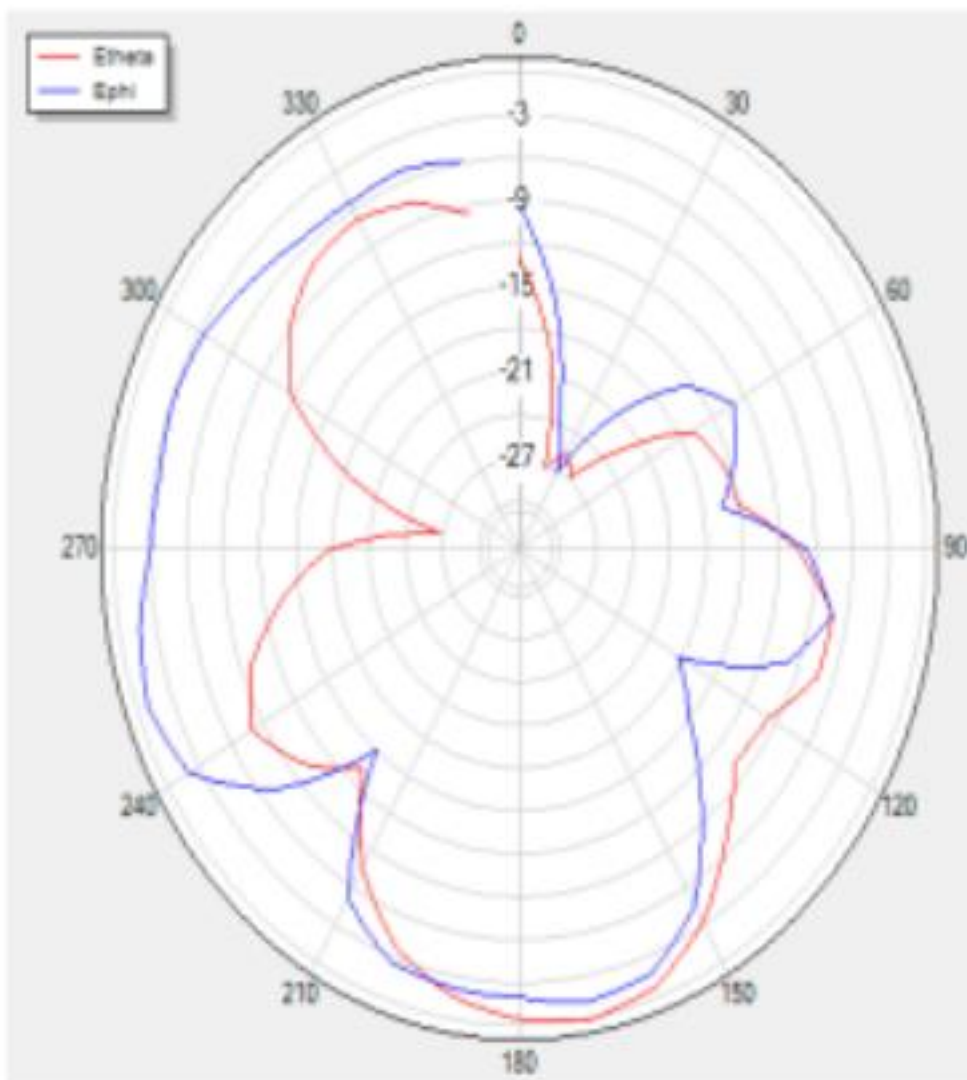
H Theta=0 freq=2450MHz



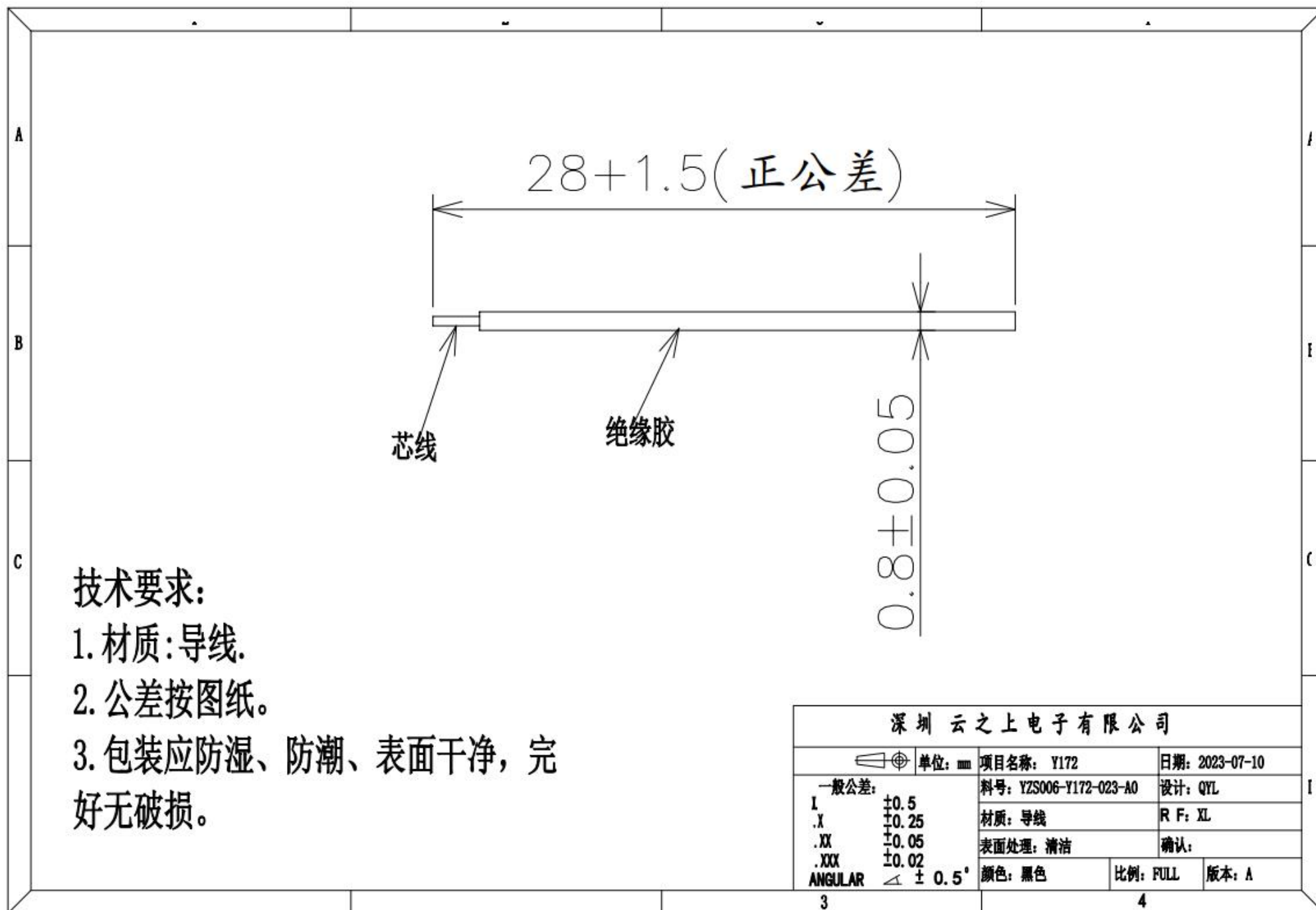
蓝牙波瓣图

H Theta=90 freq=2480MHz

H Theta=0 freq=2480MHz



蓝牙尺寸图



深圳云之上电子有限公司			
一般公差: I ± 0.5 .X ± 0.25 .XX ± 0.05 .XXX ± 0.02 ANGULAR $\triangle \pm 0.5^\circ$	mm 单位: mm	项目名称: Y172	日期: 2023-07-10
		料号: YZS006-Y172-023-A0	设计: QYL
		材质: 导线	R F: XL
		表面处理: 清洁	确认:
		颜色: 黑色	比例: FULL 版本: A
3	4		