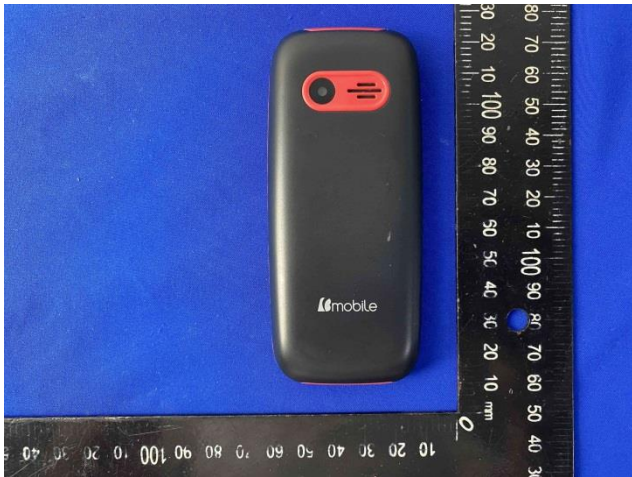
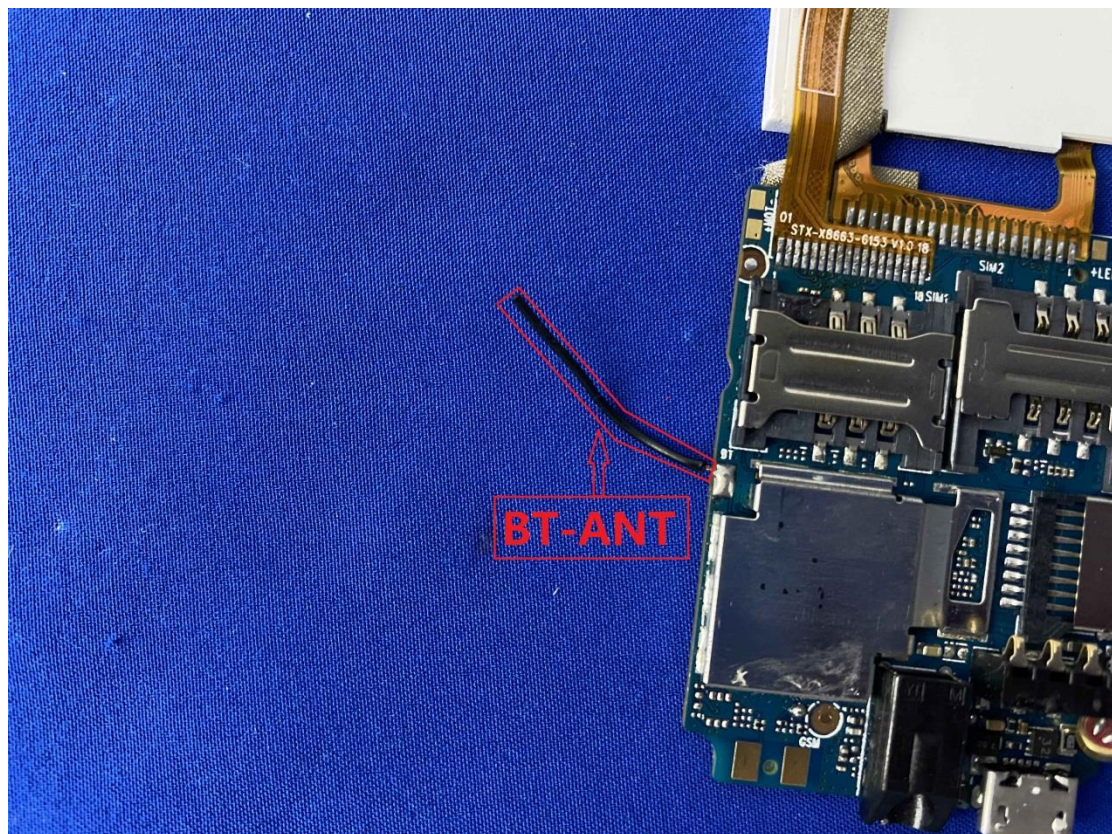


# EUT Photos (Model:K386)

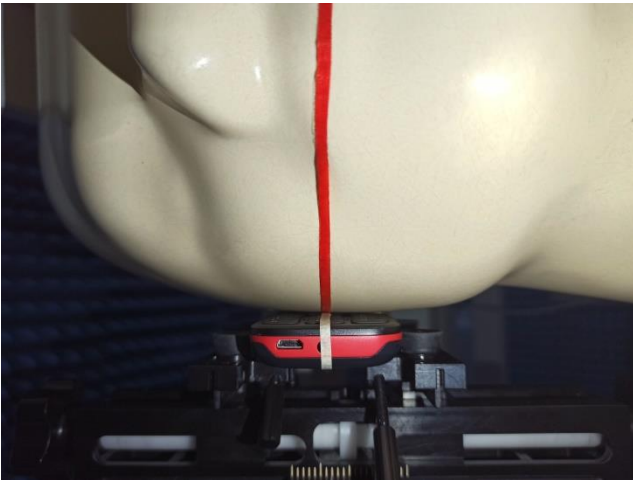


# EUT Antenna Locations

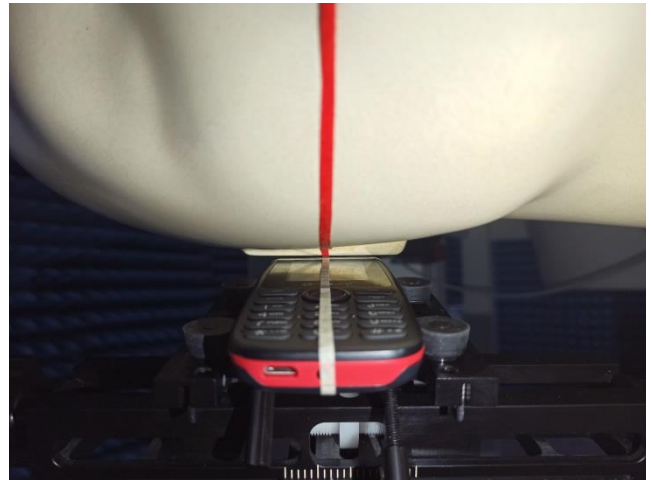


# SAR Test Setup Photos

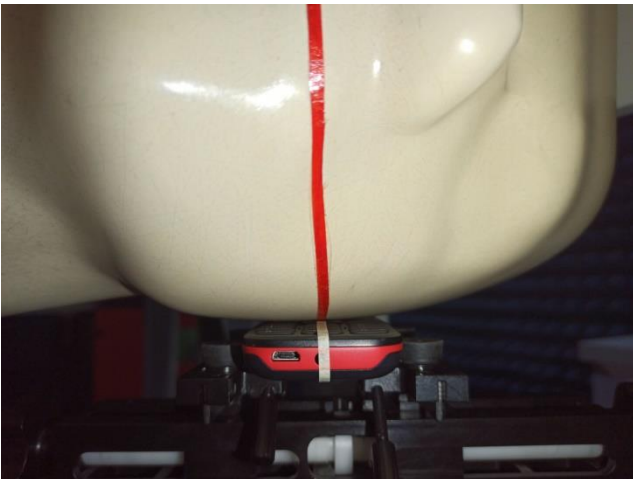
## Head



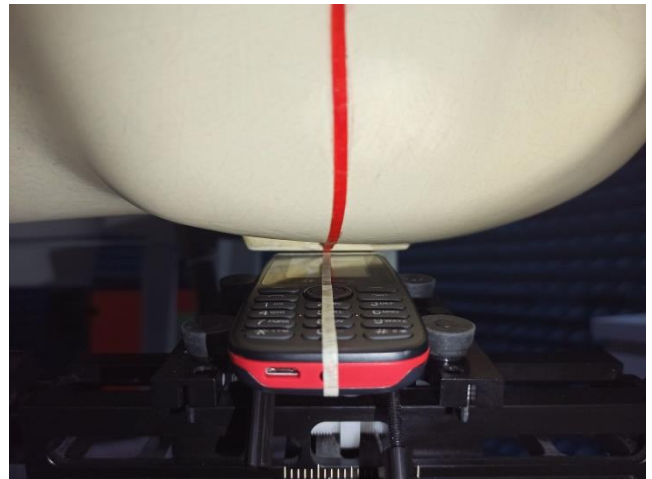
Right Cheek



Right Tilted

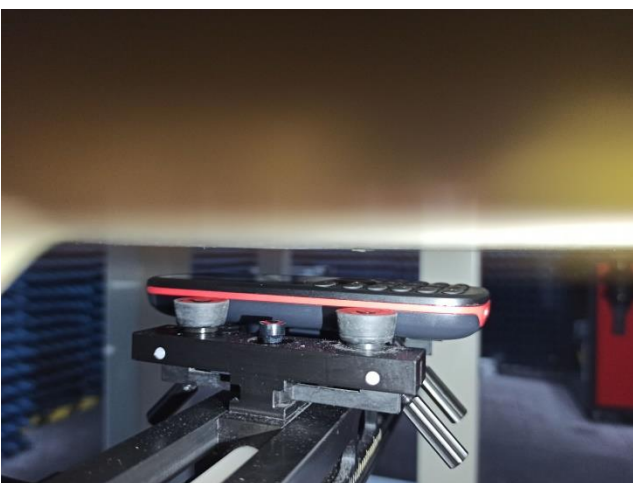


Left Cheek

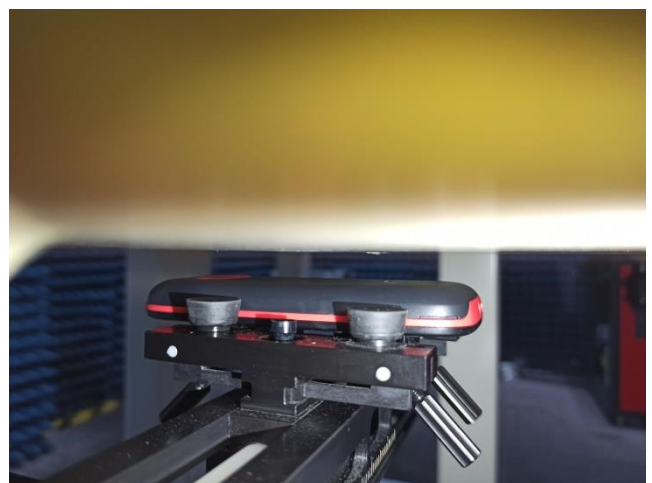


Left Tilted

## Body



Front side (10mm)



Back side(10mm)



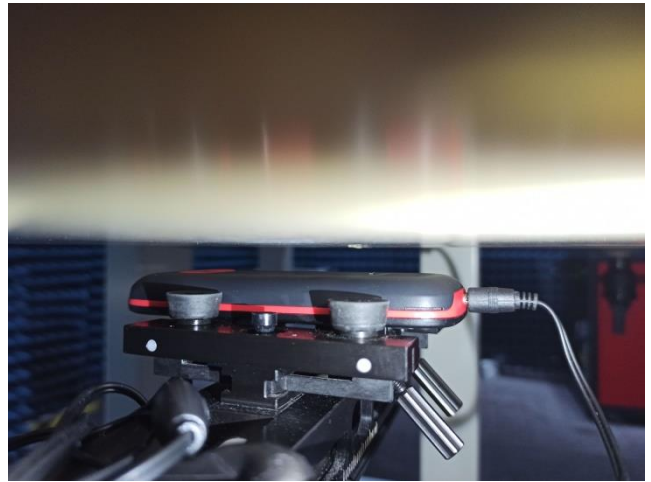
Bottom side(10mm)



Left side(10mm)

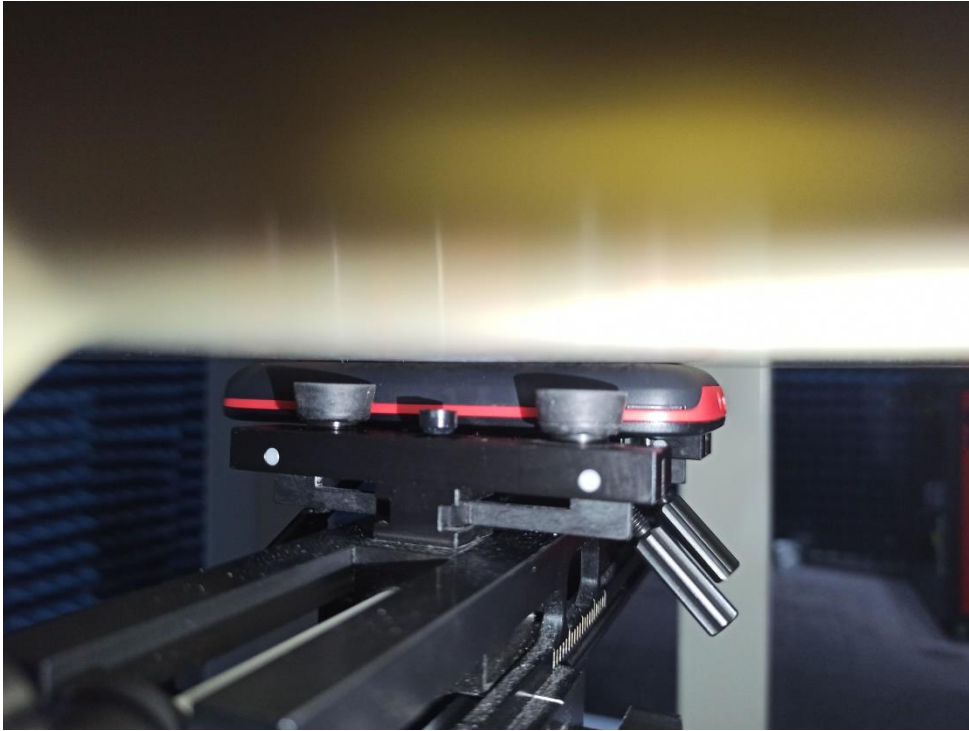


Right side(10mm)



Back side with headset(10mm)

## EUT holder Perturbation Evaluation Test Setup Photos



DUT with device holder (DUT direct contact with the phantom)



DUT without device holder (DUT direct contact with the phantom)