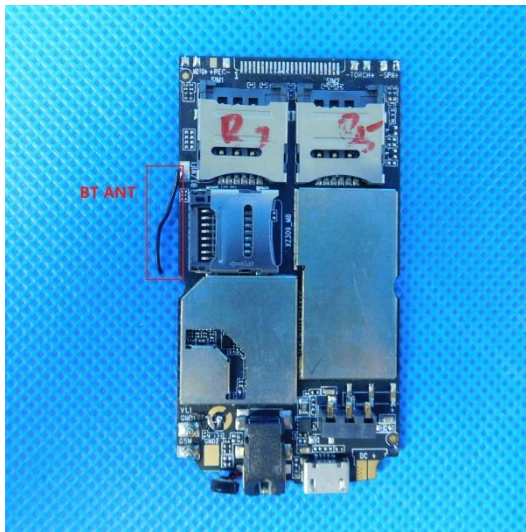
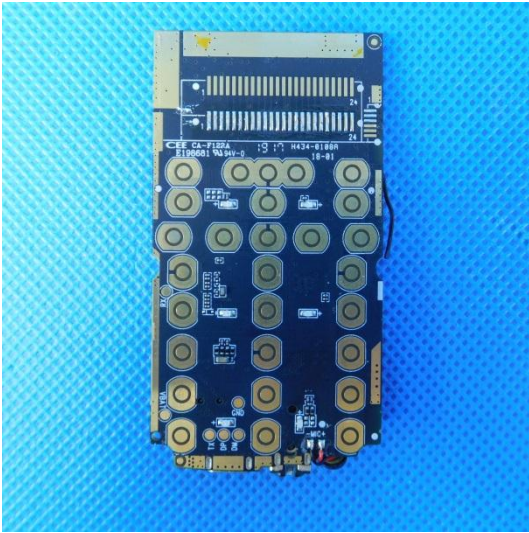
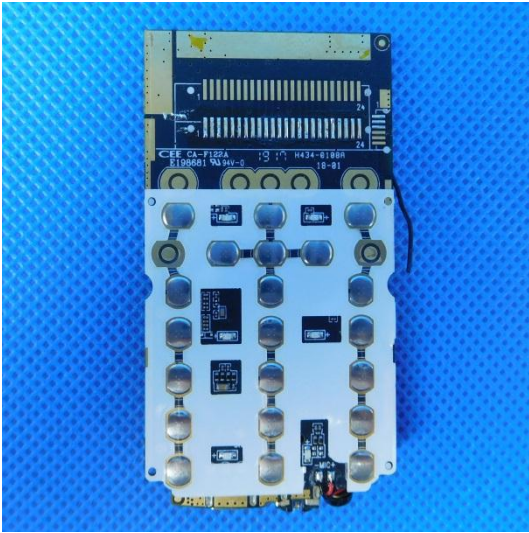
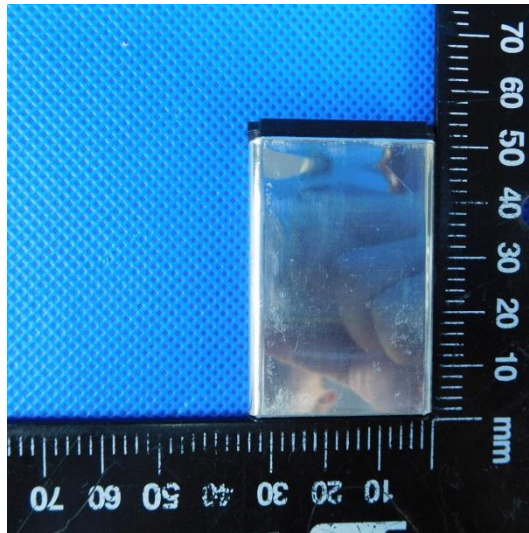
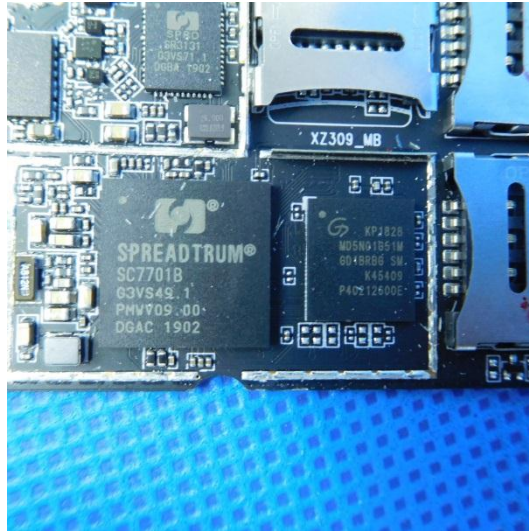


Model:K401

Internal photos of the EUT







Li-ion Battery

Model: PA1805A
VOLTAGE: DC 3.7V Capacity: 800mAh
2.96 Wh

CAUTION

MAY EXPLODE IF DAMAGED OR DISPOSED OF IN FIRE
DO NOT SHORT-CIRCUIT
DO NOT DISASSEMBLE WITHOUT AUTHORIZATION
USE SPECIFIED ADAPTER ONLY

CHARGING ENVIRONMENT
TEMPERATURE: 0°C-50°C

Made In China

⊖ ⊕