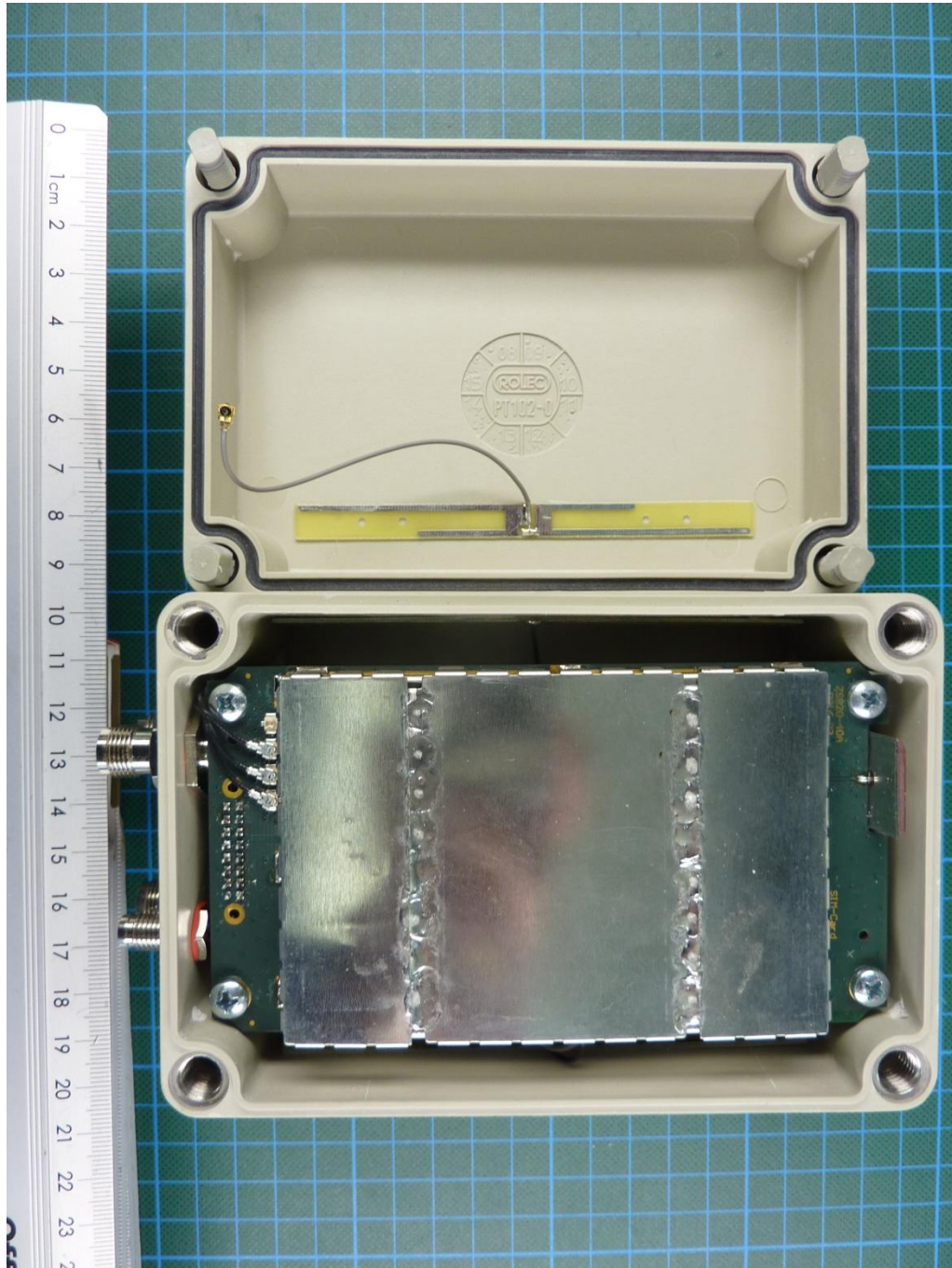
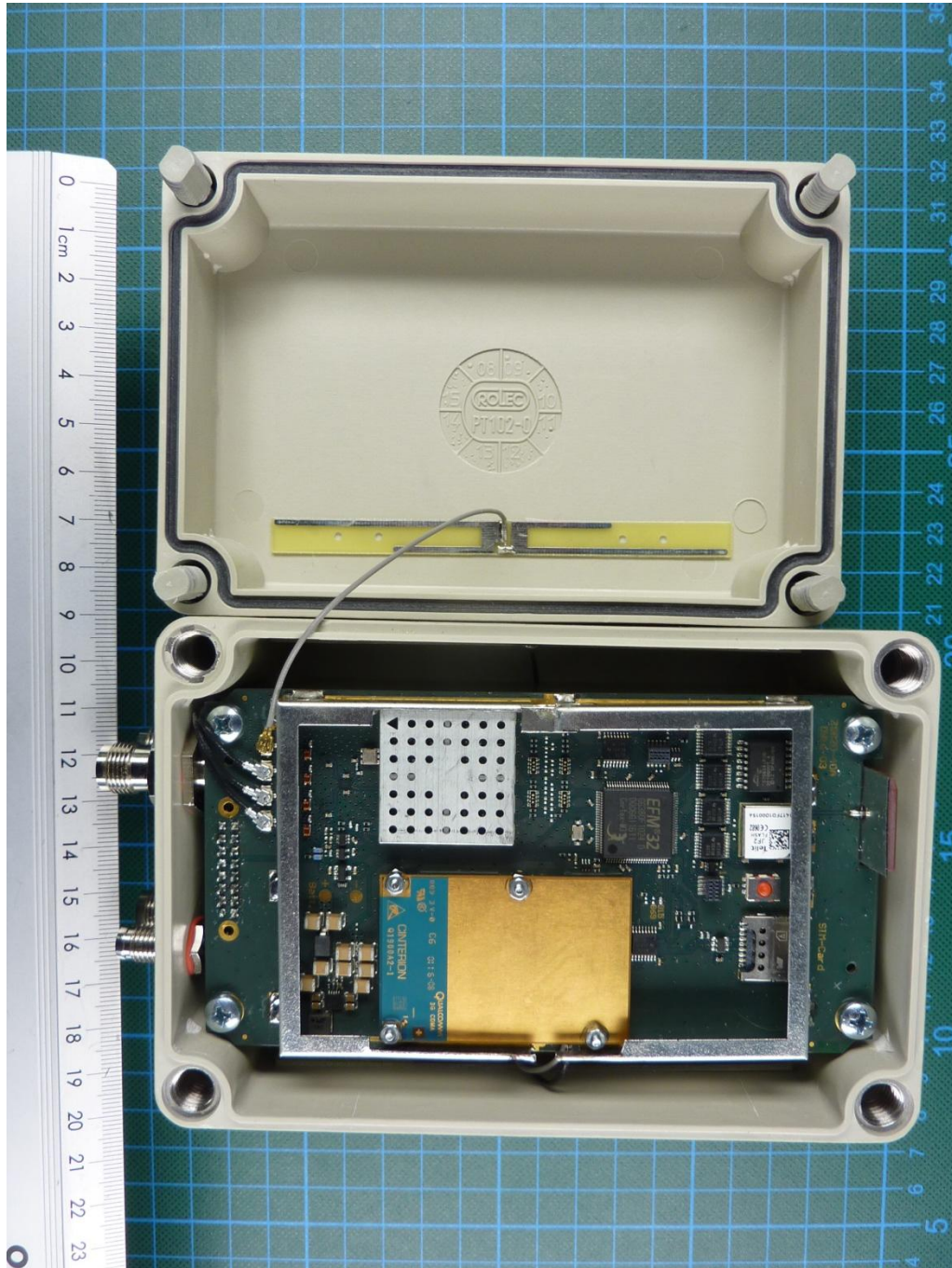


**Annex C Internal photos**



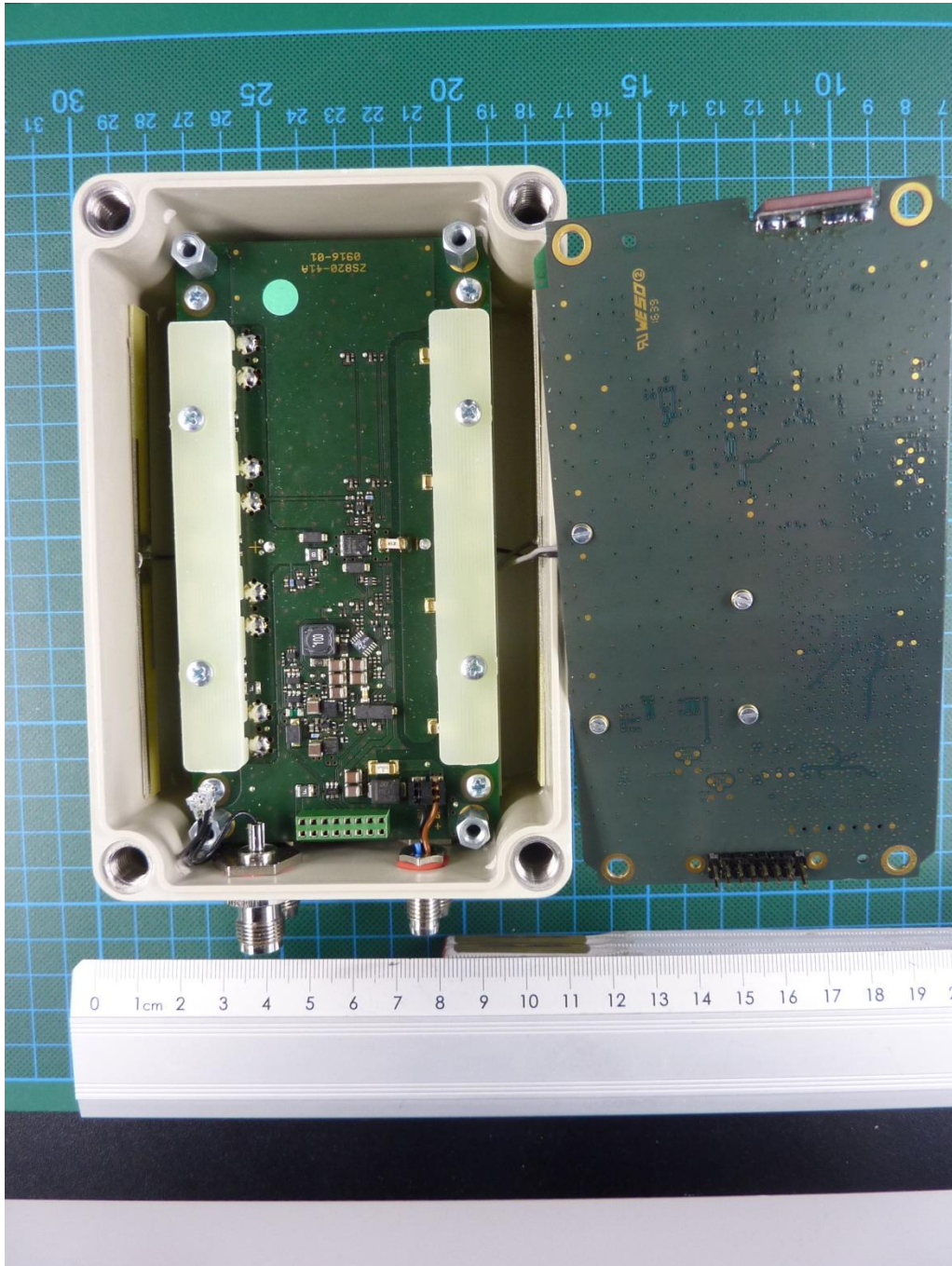
161597\_d.JPG: ZONESCAN 820 Solar Alpha, internal view

**Annex C Internal photos**



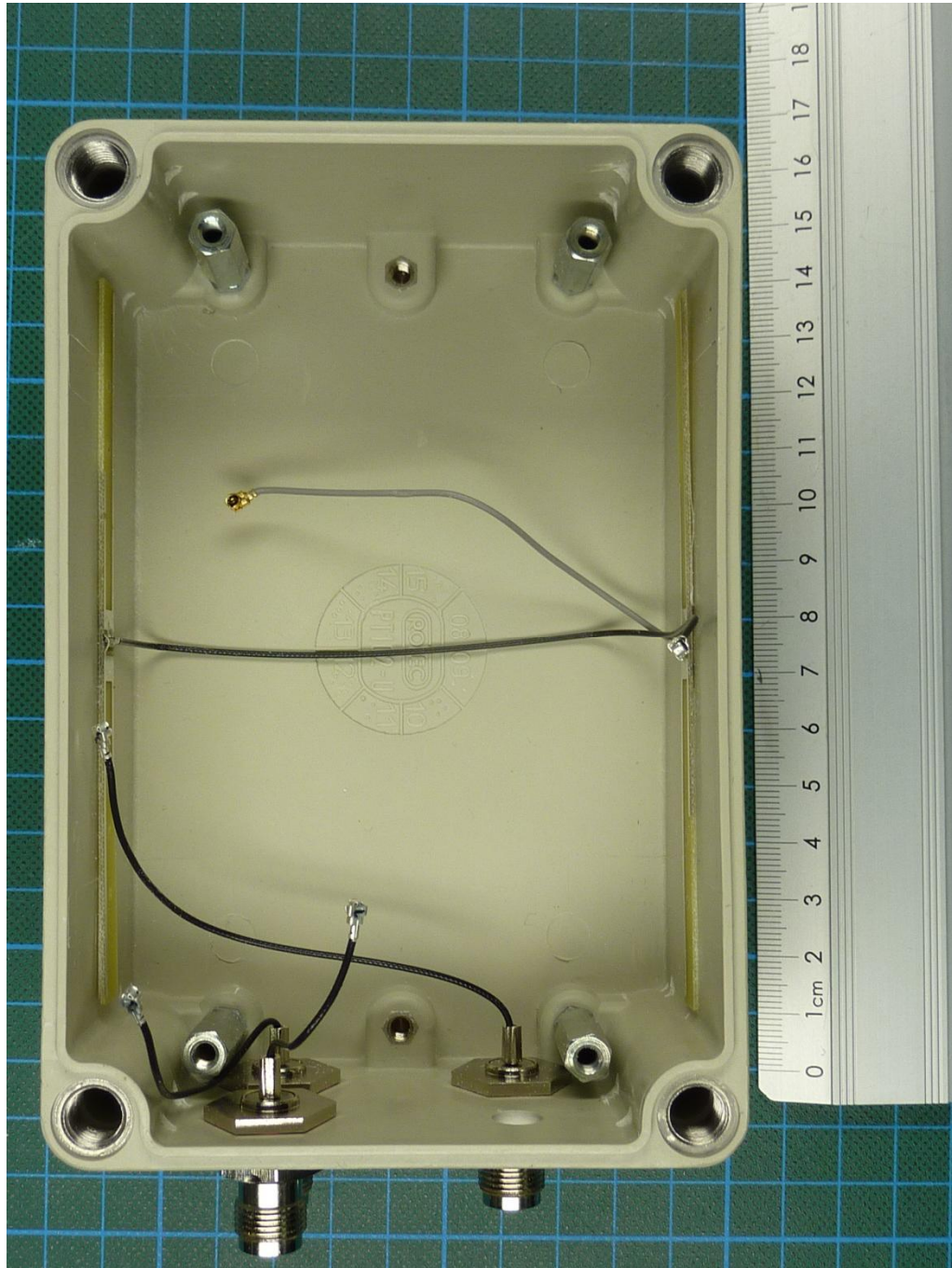
161597\_f.JPG: ZONESCAN 820 Solar Alpha, internal view, shielding removed

**Annex C Internal photos**



161597\_e.JPG: ZONESCAN 820 Solar Alpha, internal view, main PCB removed

**Annex C Internal photos**



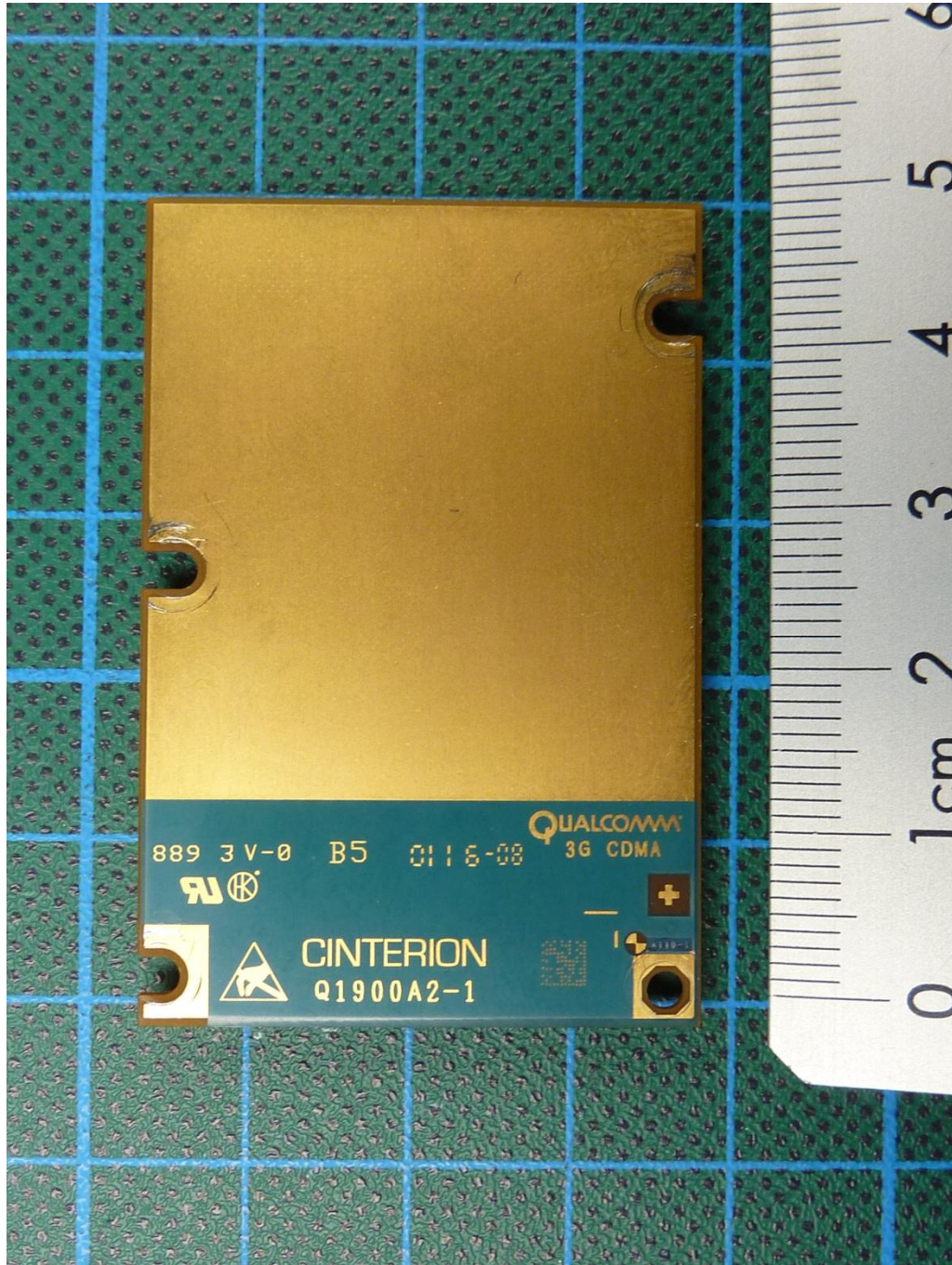
161597\_i.JPG: ZONESCAN 820 Solar Alpha, internal view to GSM/UMTS antennas

Annex C Internal photos



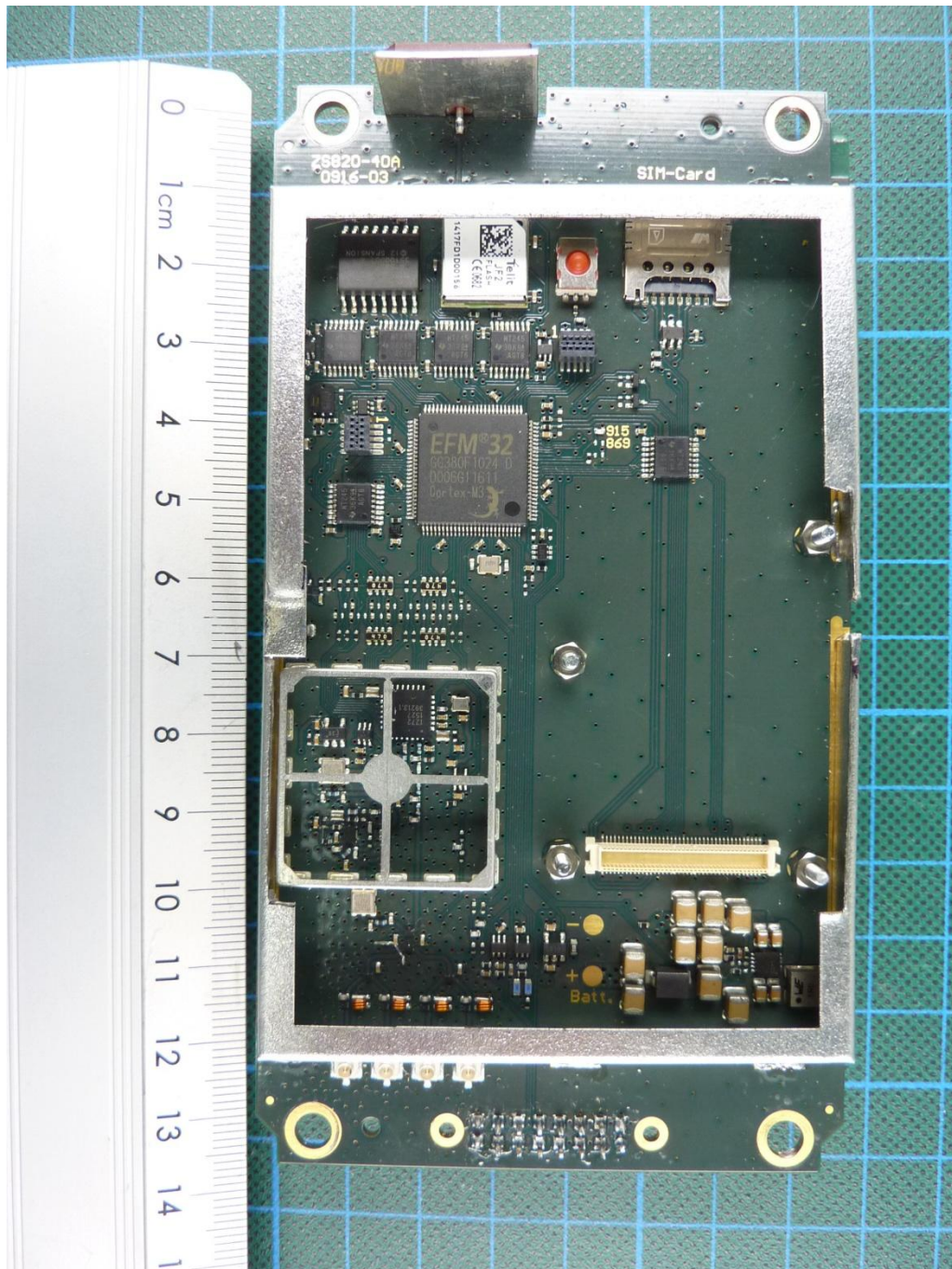
161597\_q.JPG: ZONESCAN 820 Solar Alpha, GSM/UMTS module, top view

Annex C Internal photos



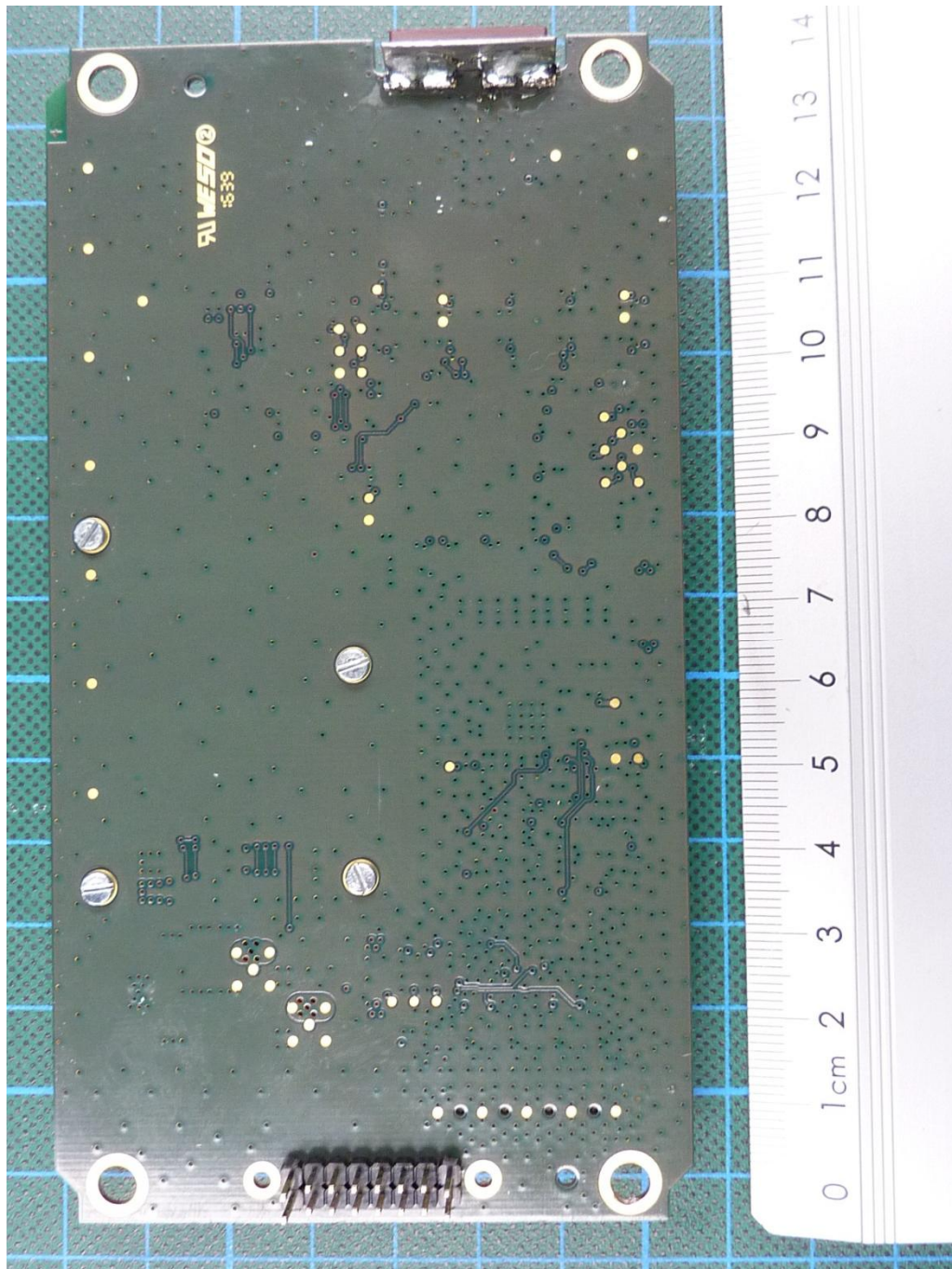
161597\_g.JPG: ZONESCAN 820 Solar Alpha, GSM/UMTS module, bottom view

**Annex C Internal photos**



161597\_I.JPG: ZONESCAN 820 Solar Alpha, main PCB, shielding removed, top view

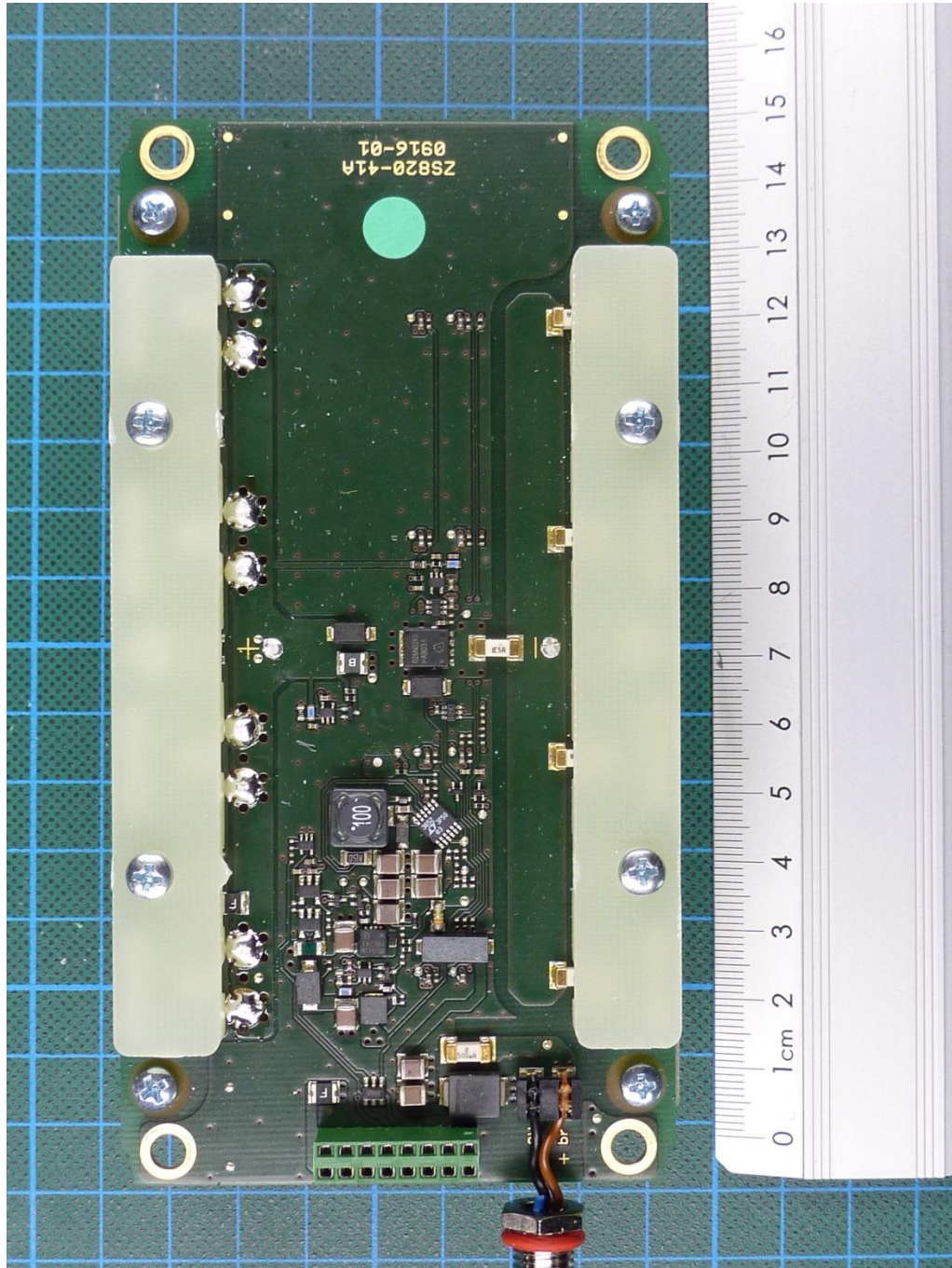
**Annex C Internal photos**



161597\_n.JPG: ZONESCAN 820 Solar Alpha, main PCB, bottom view

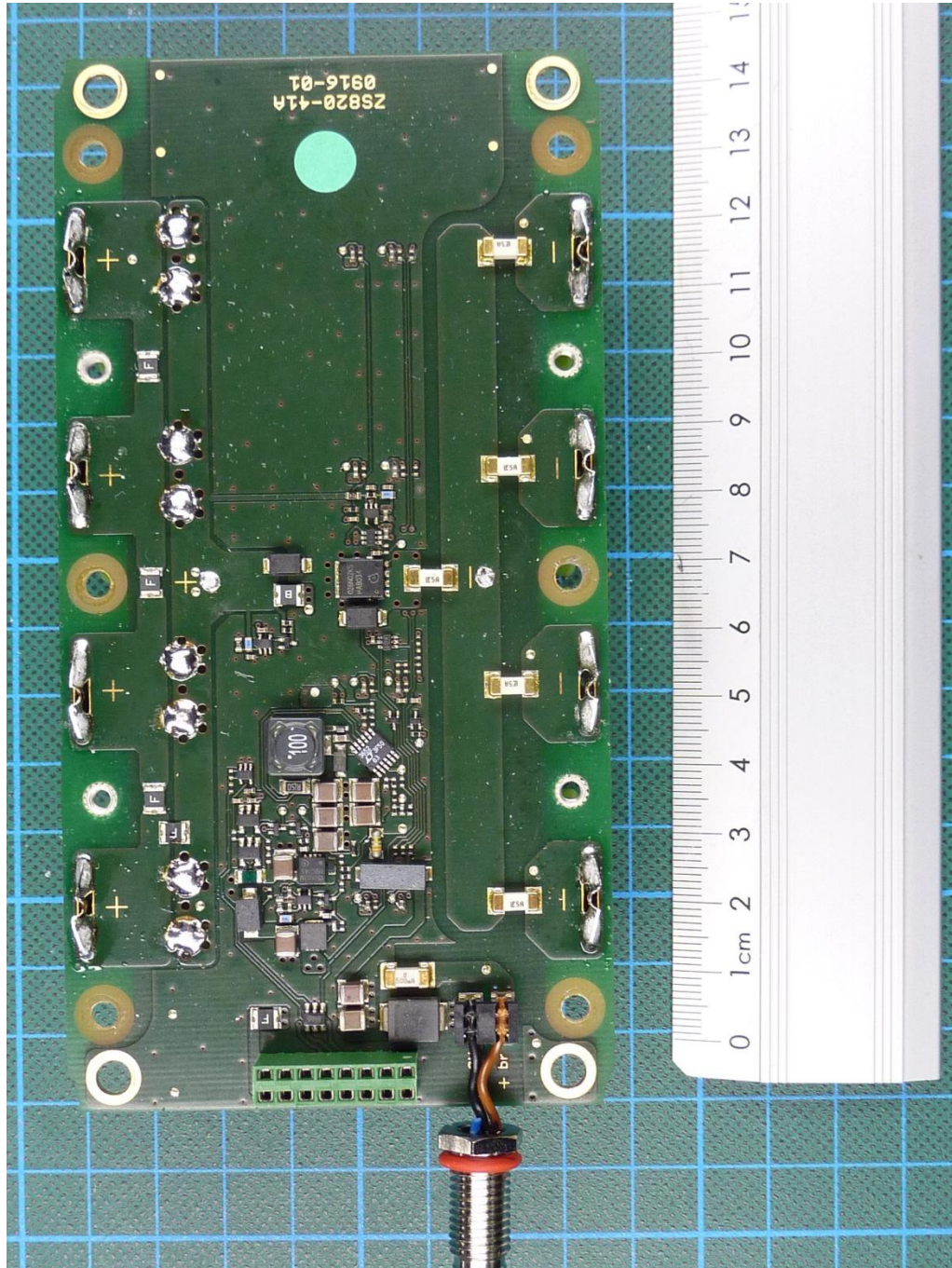


**Annex C Internal photos**



161597\_j.JPG: ZONESCAN 820 Solar Alpha, power supply PCB, bottom view

**Annex C Internal photos**



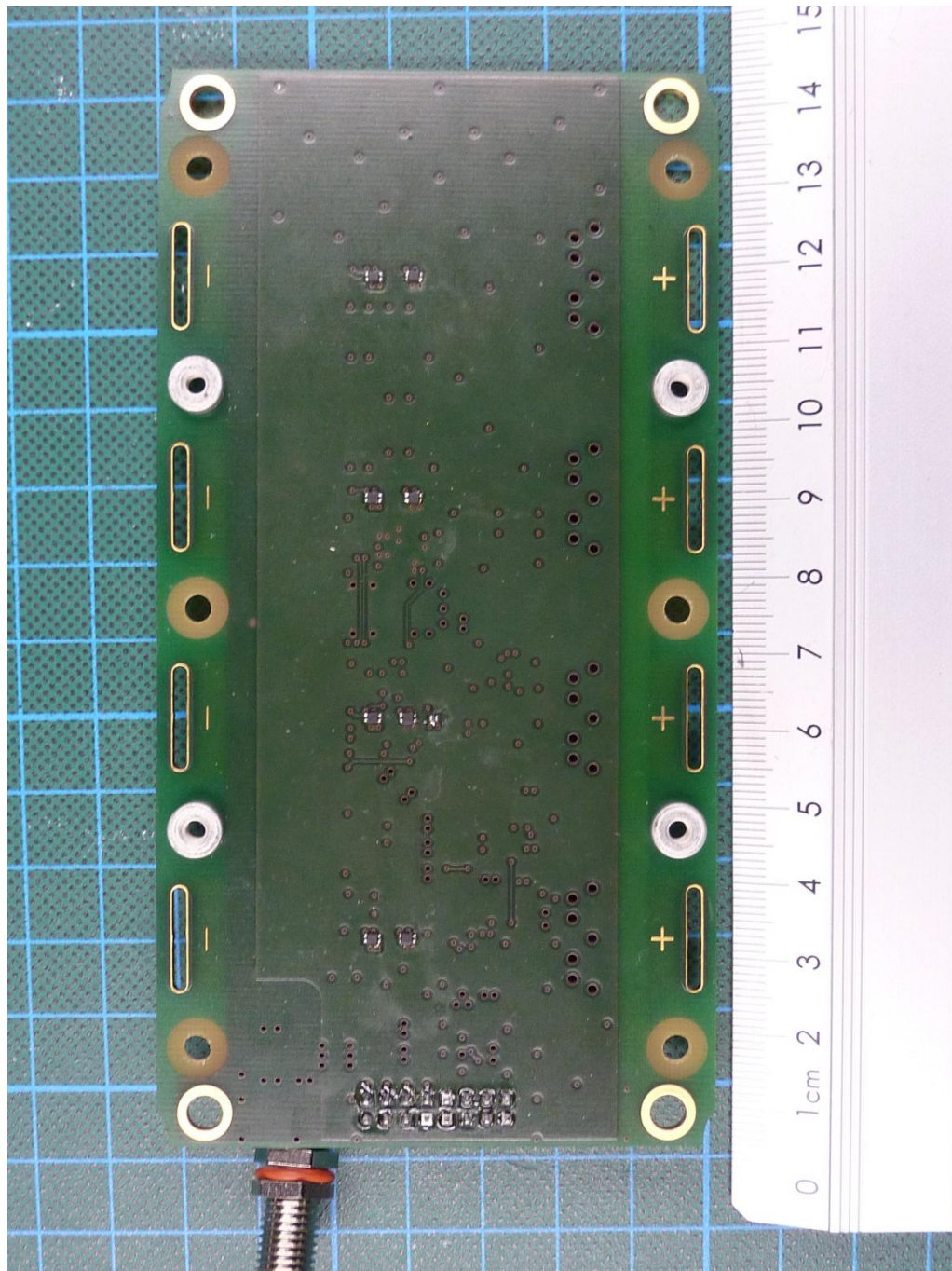
161597\_m.JPG: ZONESCAN 820 Solar Alpha, power supply PCB, top view, battery holder removed

**Annex C Internal photos**



161597\_k.JPG: ZONESCAN 820 Solar Alpha, power supply PCB, bottom view

**Annex C Internal photos**



161597\_p.JPG: ZONESCAN 820 Solar Alpha, power supply PCB, bottom view, battery removed