

**Annex B: External photographs**



153494\_I\_U\_1.JPG: ZONESCAN 820 Logger with integrated antenna, 3-D-view 1

**Annex B: External photographs**



153494\_I\_U\_2.JPG: ZONESCAN 820 Logger with integrated antenna, 3-D-view 2



**Annex B: External photographs**



153494\_I\_U\_3.JPG: ZONESCAN 820 Logger with integrated antenna, type plate view

**Annex B: External photographs**



153494\_X\_U\_1.JPG: ZONSCAN 820 Logger with external antenna port, 3-D-view 1



**Annex B: External photographs**



153494\_X\_U\_2.JPG: ZONESCAN 820 Logger with external antenna port, 3-D-view 2

## Annex B: External photographs



153494\_X\_U\_3.JPG: ZONESCAN 820 Logger with external antenna port, type plate view

**Annex B: External photographs**



153494\_E\_U\_4.JPG: EASYSCAN SENSOR, 3-D-view 1



**Annex B: External photographs**



153494\_E\_U\_2.JPG: EASYSCAN SENSOR, 3-D-view 2

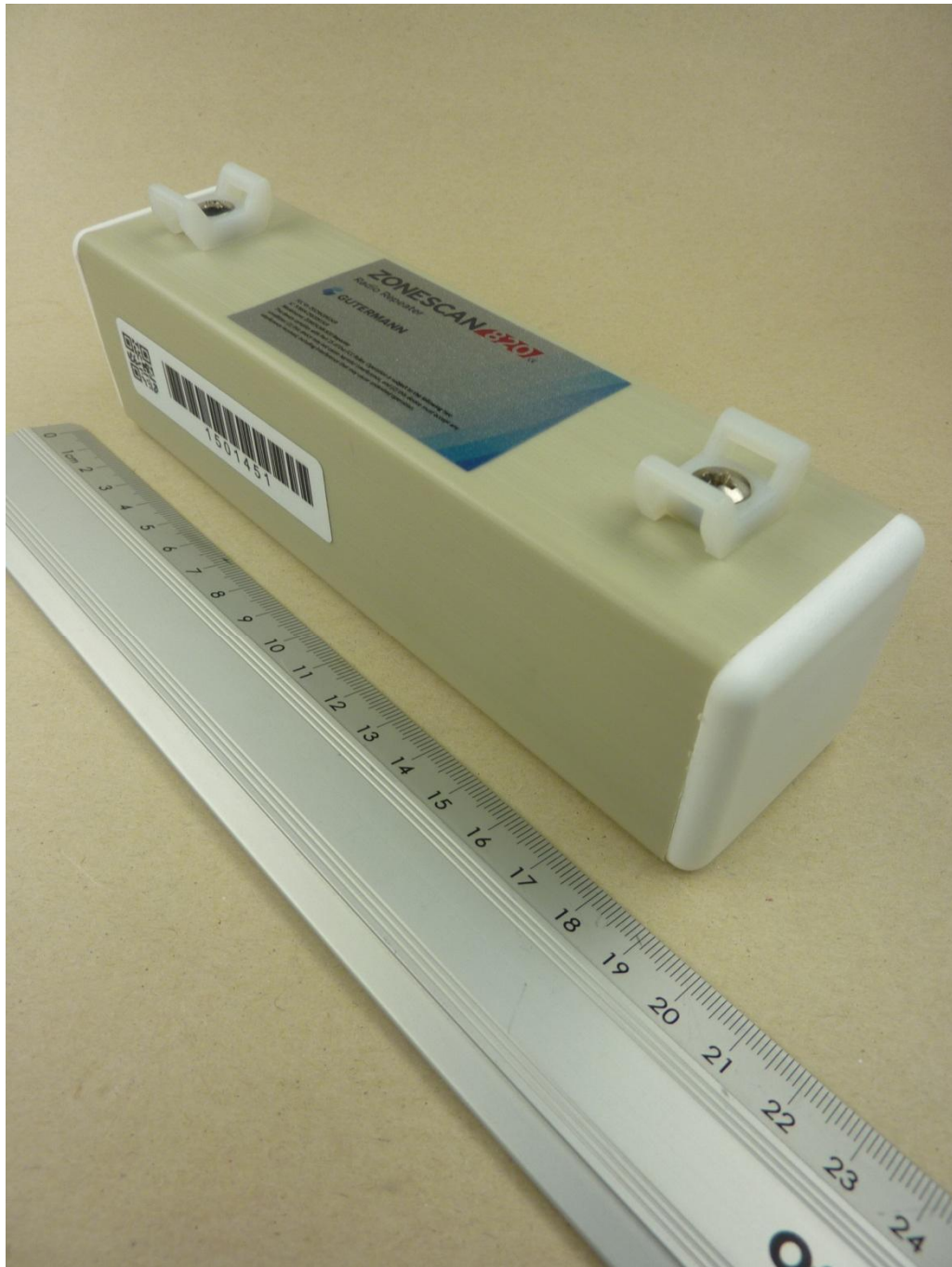


**Annex B: External photographs**



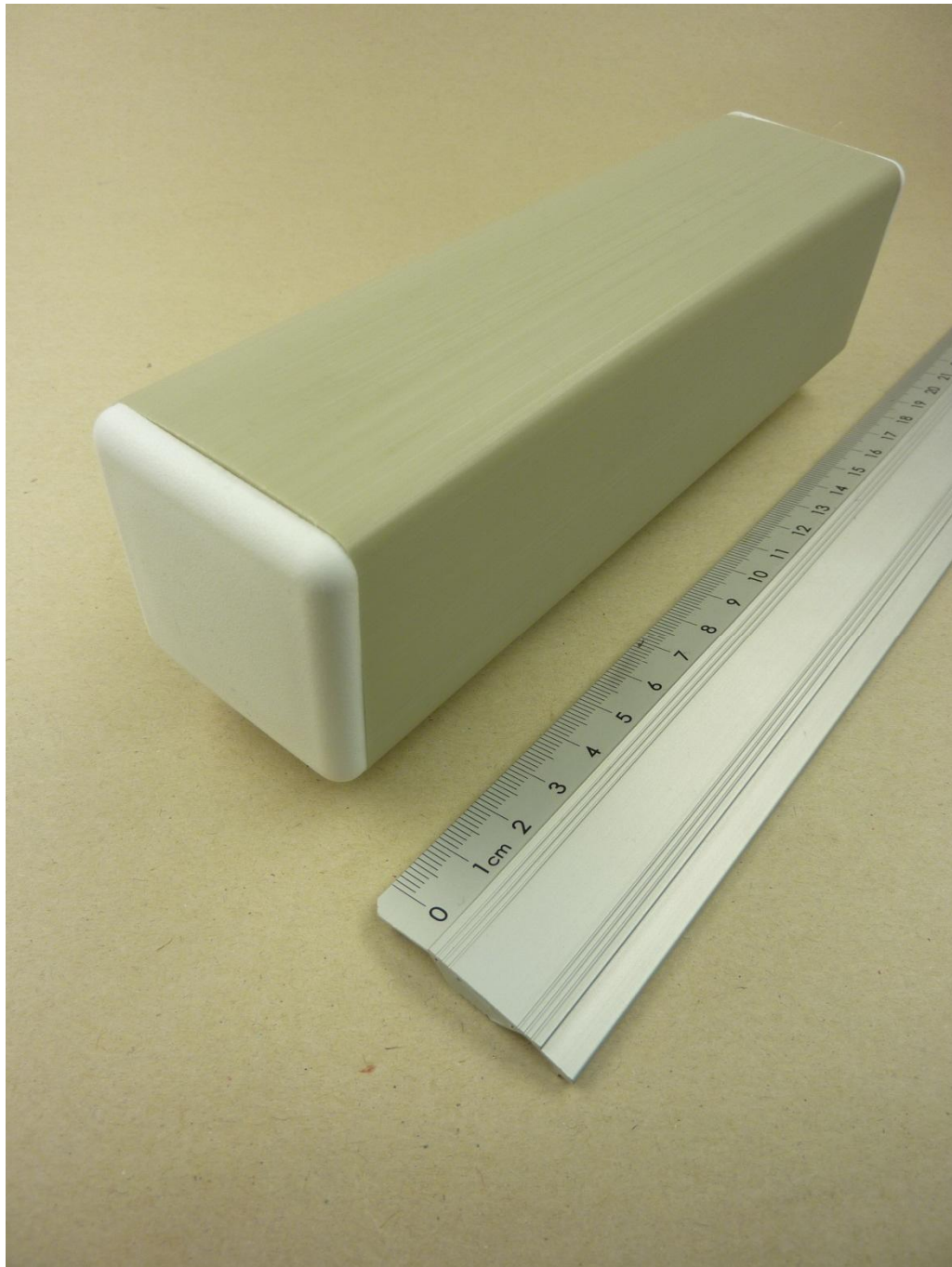
153494\_E\_U\_3.JPG: EASYSCAN SENSOR, type plate view

**Annex B: External photographs**



153494\_R\_U\_2.JPG: ZONESCAN 820 Repeater, 3-D-view 1

**Annex B: External photographs**



153494\_R\_U\_3.JPG: ZONESCAN 820 Repeater, 3-D-view 2



## Annex B: External photographs



153494\_R\_U\_3.JPG: ZONESCAN 820 Repeater, type plate view