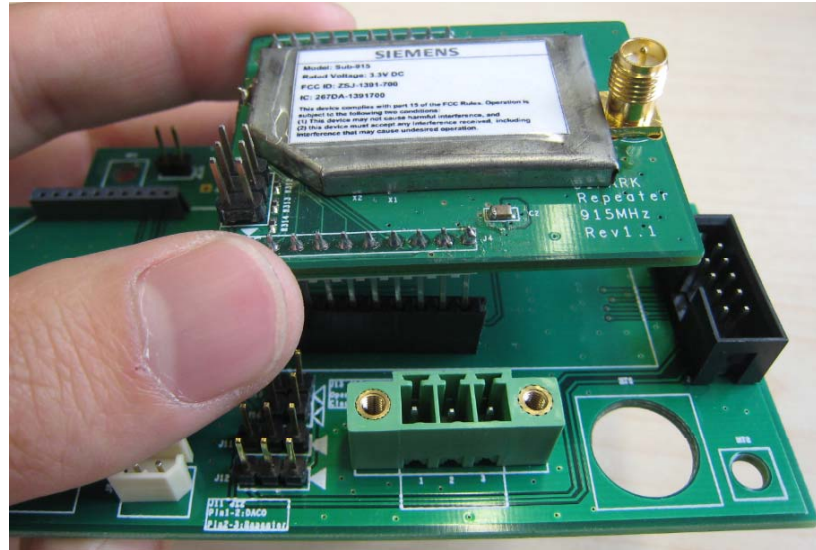


User manual: installation guide



1. Find a main board to assemble the Sub-915 module
2. Insert the Sub-915 module to the socket of the main board

Changes or modifications not expressly approved by the part responsible for compliance could void the user's authority to operate the equipment

In case, the label of the module is not visible to the end user at the time of purchase of the final host product, the final host product must show the sentence:

Contains FCC ID: ZSJ-1391-700

The module must be used with the antenna supplied together with the Module.

The antenna of this transmitter must be installed to provide a separation distance of at least 20 cm from all persons, and must not be co-located or operating in conjunction with other antennas or transmitters within a host device, except in accordance with FCC multitransmitter product procedures.