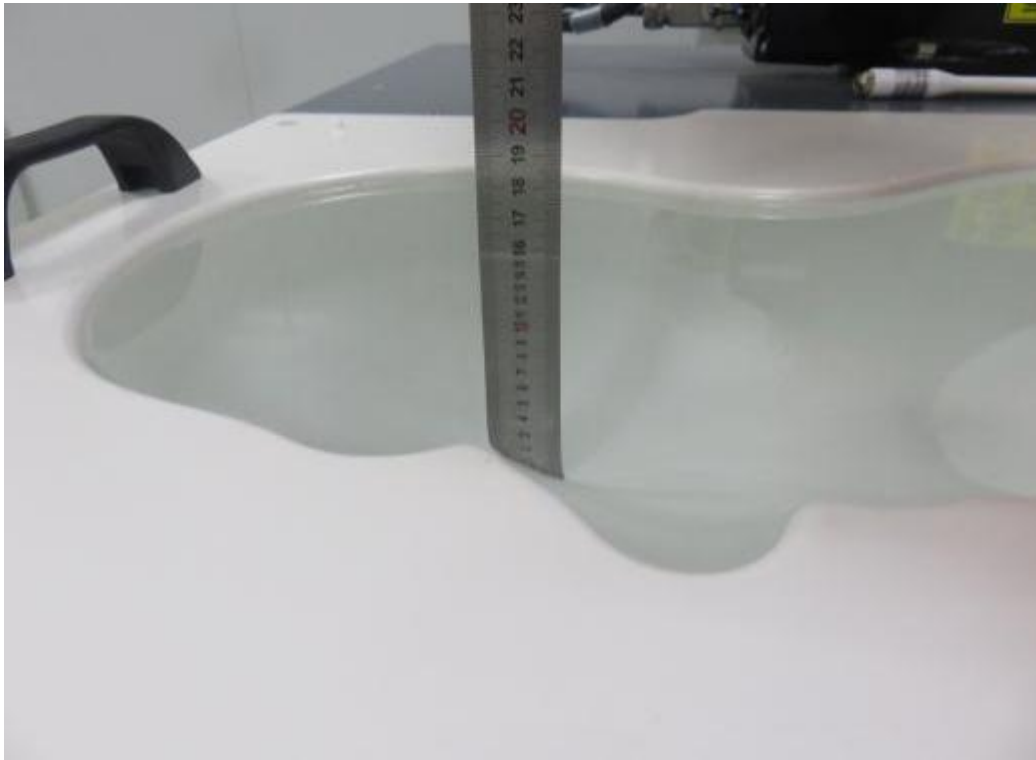
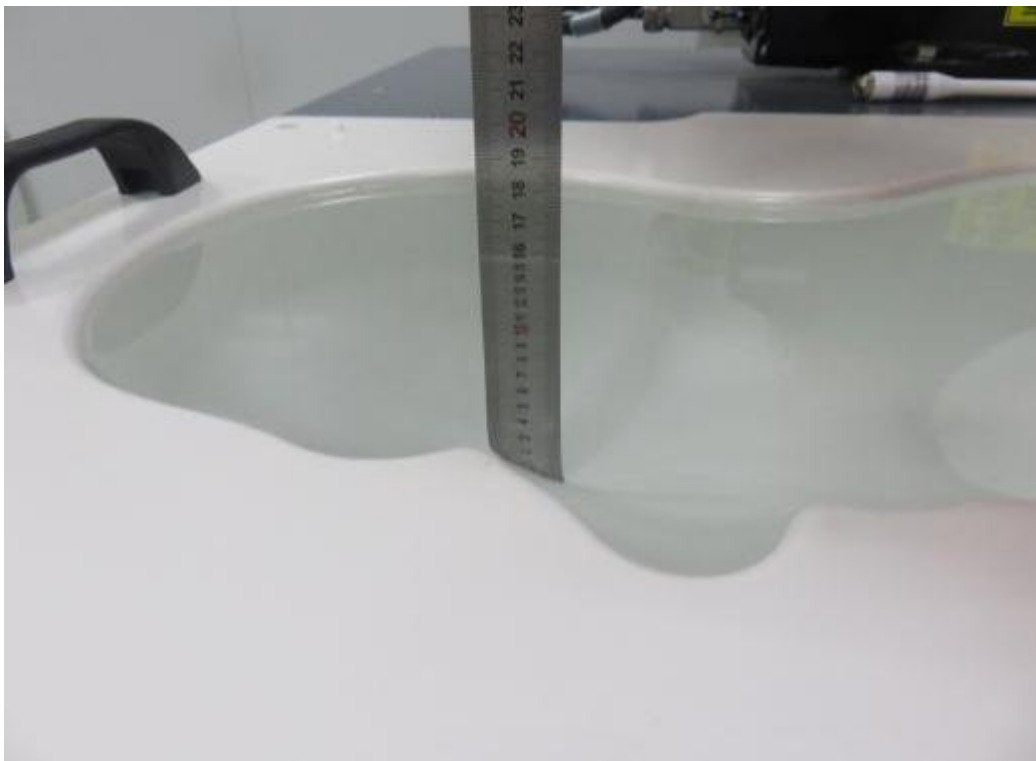


## 6. EUT TEST PHOTOGRAPHS

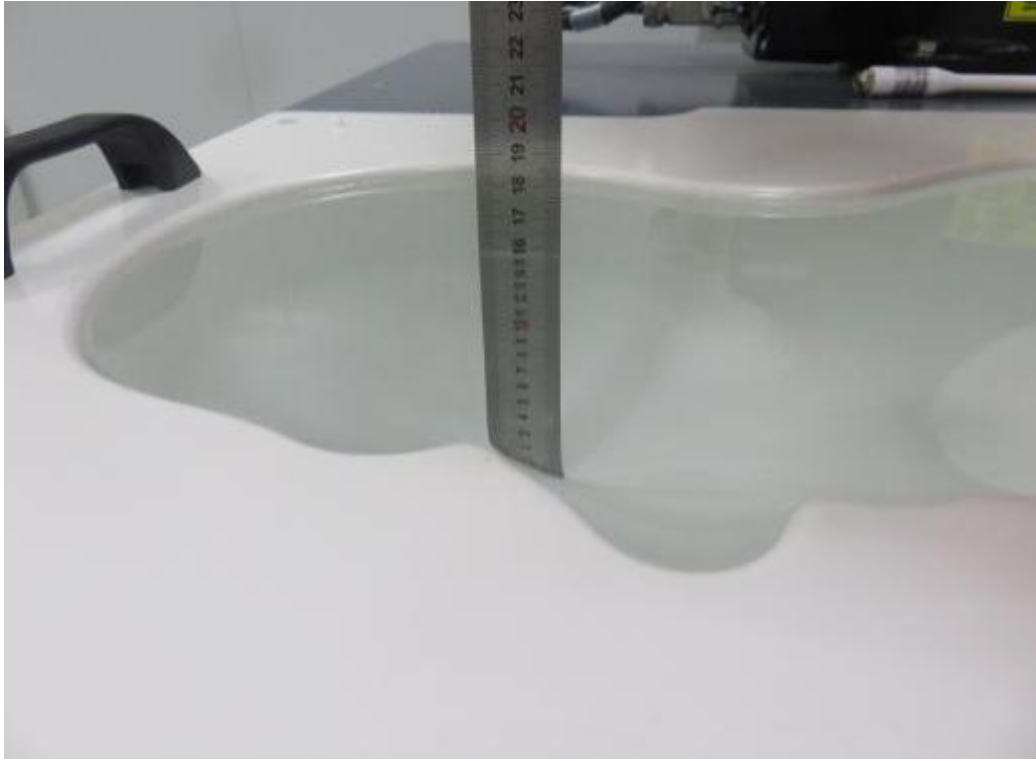
### 6.1 Photograph of liquid depth



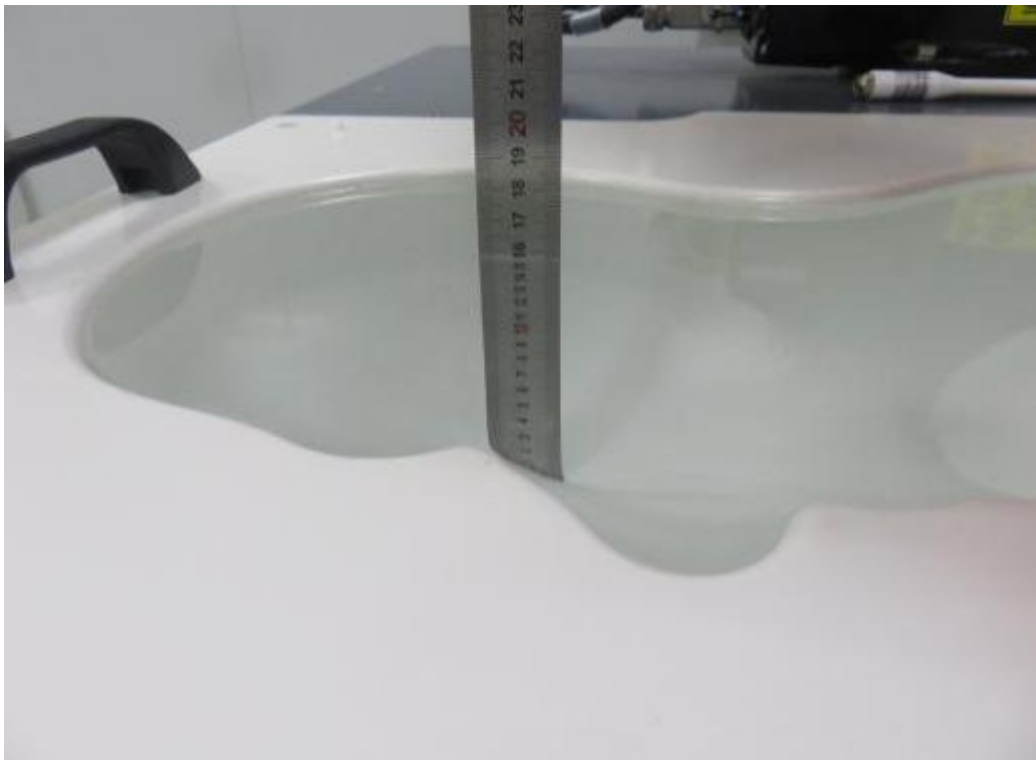
Photograph of the depth in the Head Phantom (750MHz, 15.3cm depth)



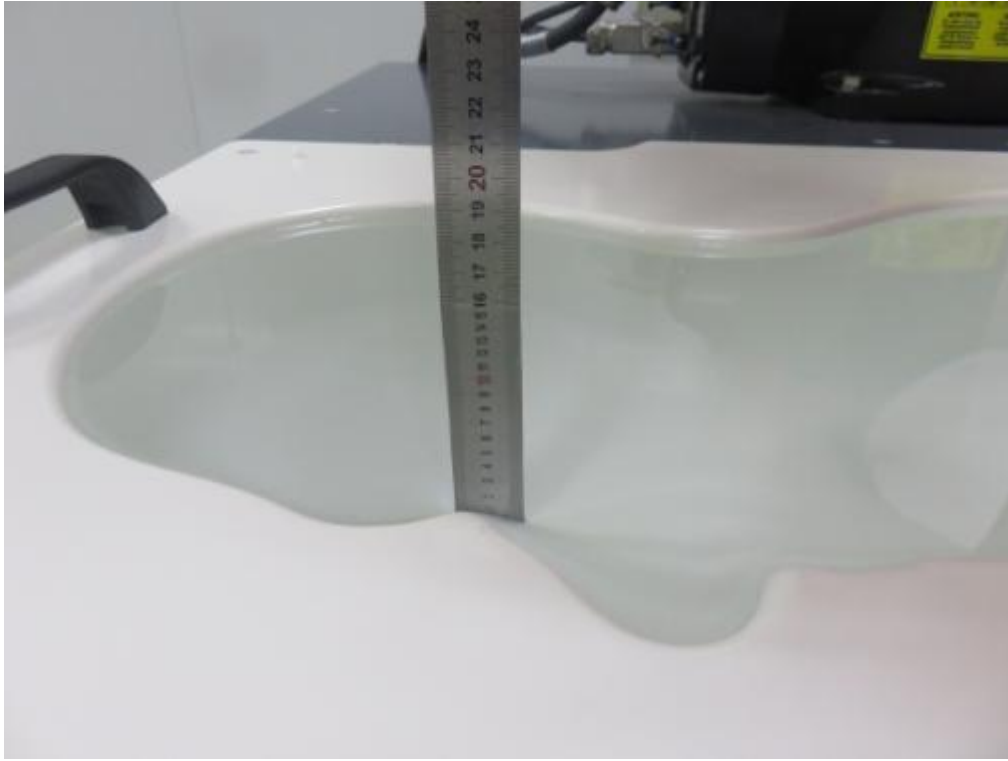
Photograph of the depth in the Head Phantom (835MHz, 15.4cm depth)



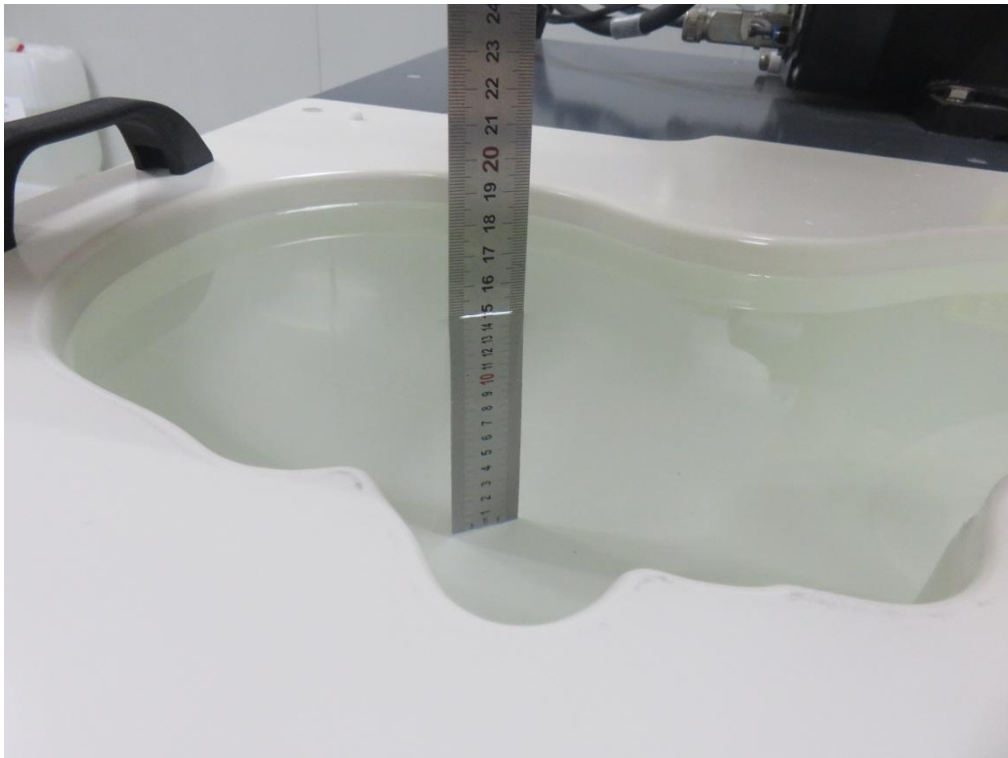
**Photograph of the depth in the Head Phantom (1800MHz, 15.3cm depth)**



**Photograph of the depth in the Head Phantom (1900MHz, 15.2cm depth)**



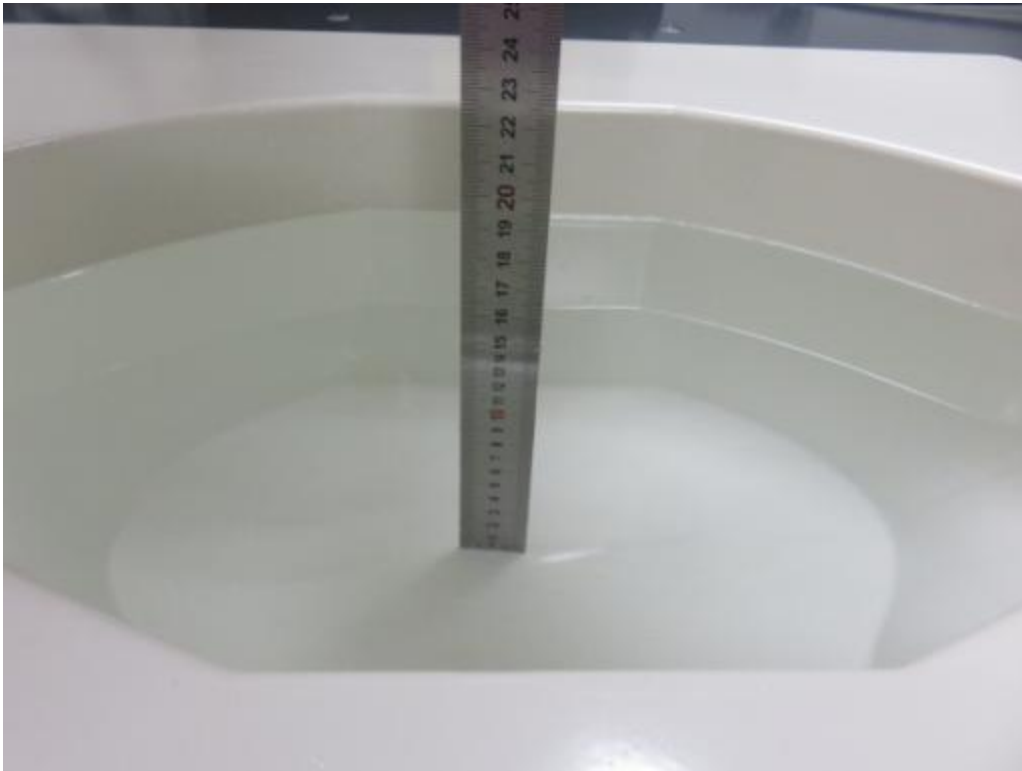
**Photograph of the depth in the Head Phantom (2450MHz, 15.3cm depth)**



**Photograph of the depth in the Head Phantom (2600MHz, 15.5cm depth)**



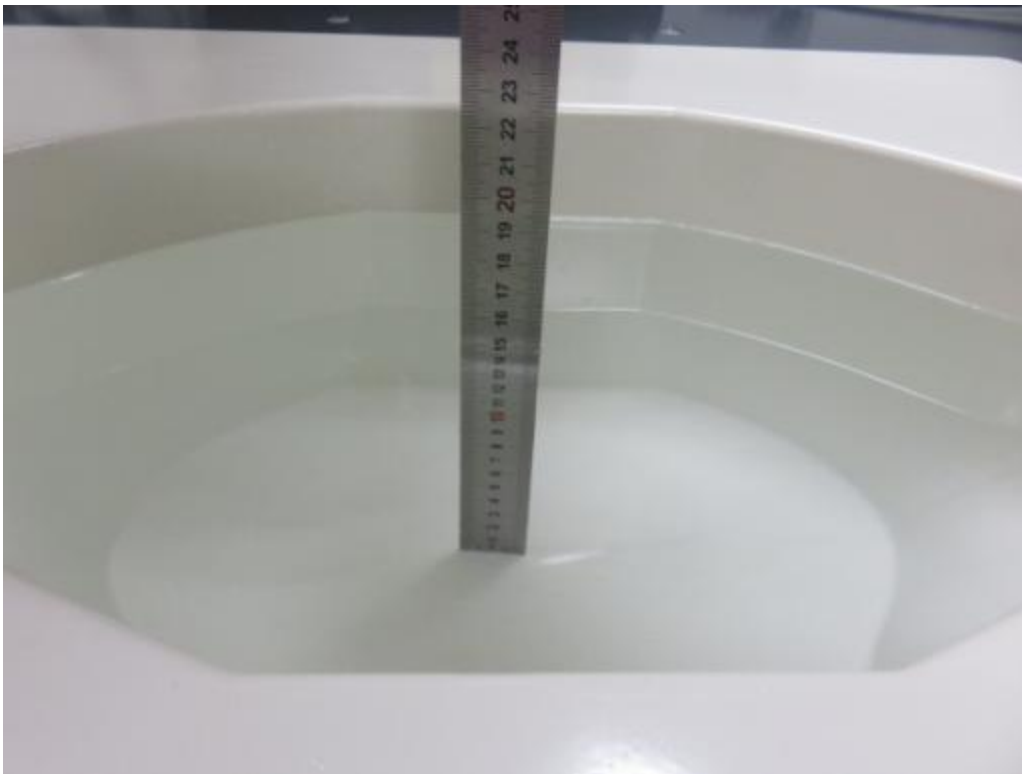
**Photograph of the depth in the Body Phantom (750MHz, 15.4cm depth)**



**Photograph of the depth in the Body Phantom (835MHz, 15.2cm depth)**



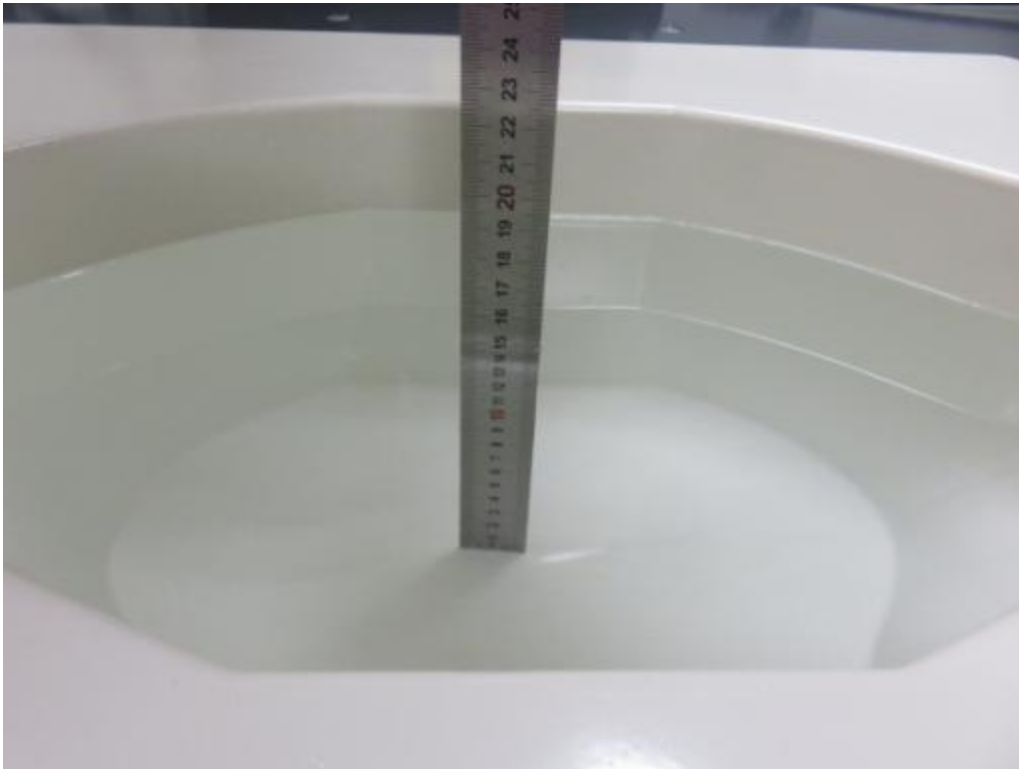
**Photograph of the depth in the Body Phantom (1800MHz, 15.2cm depth)**



**Photograph of the depth in the Body Phantom (1900MHz, 15.4 cm depth)**



**Photograph of the depth in the Body Phantom (2450MHz, 15.3cm depth)**



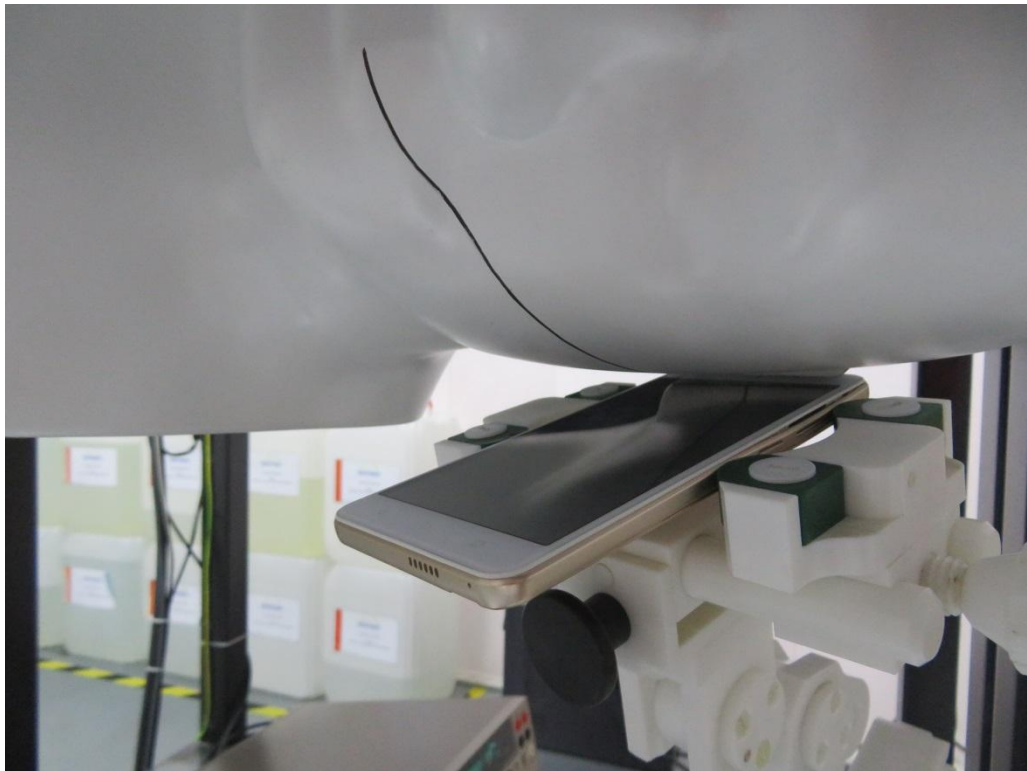
**Photograph of the depth in the Body Phantom (2600MHz, 15.2cm depth)**

## 6.2 Photograph of the Test

Head Setup Photo (Left Cheek)

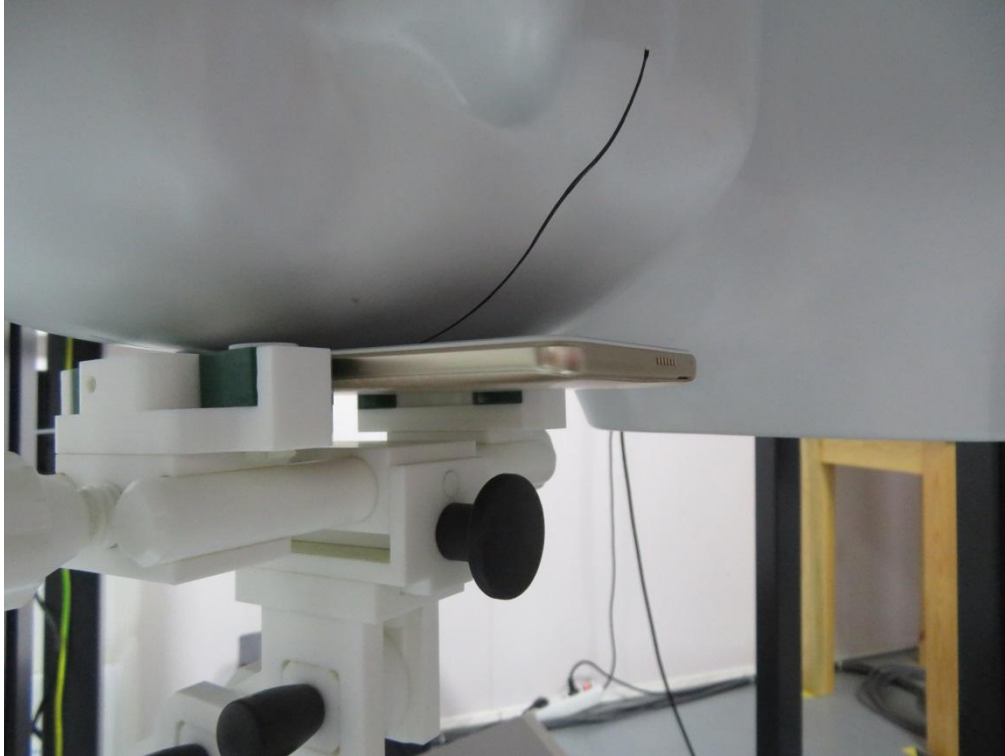


Head Setup Photo (Left Tilt)

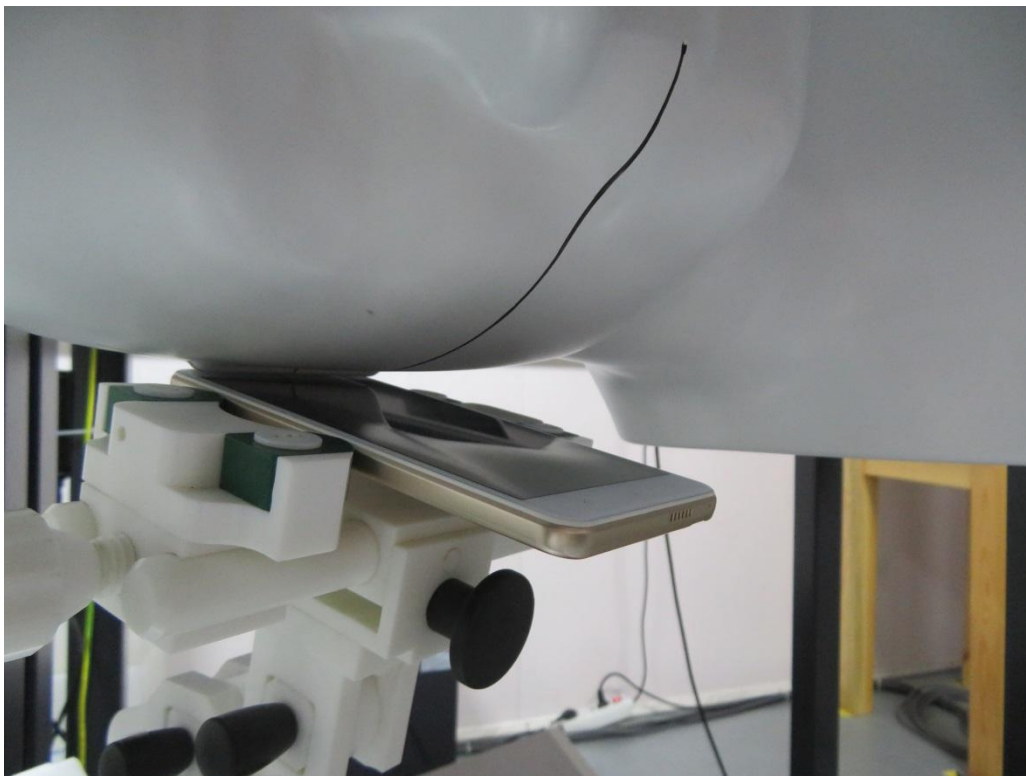




**Head Setup Photo (Right Cheek)**

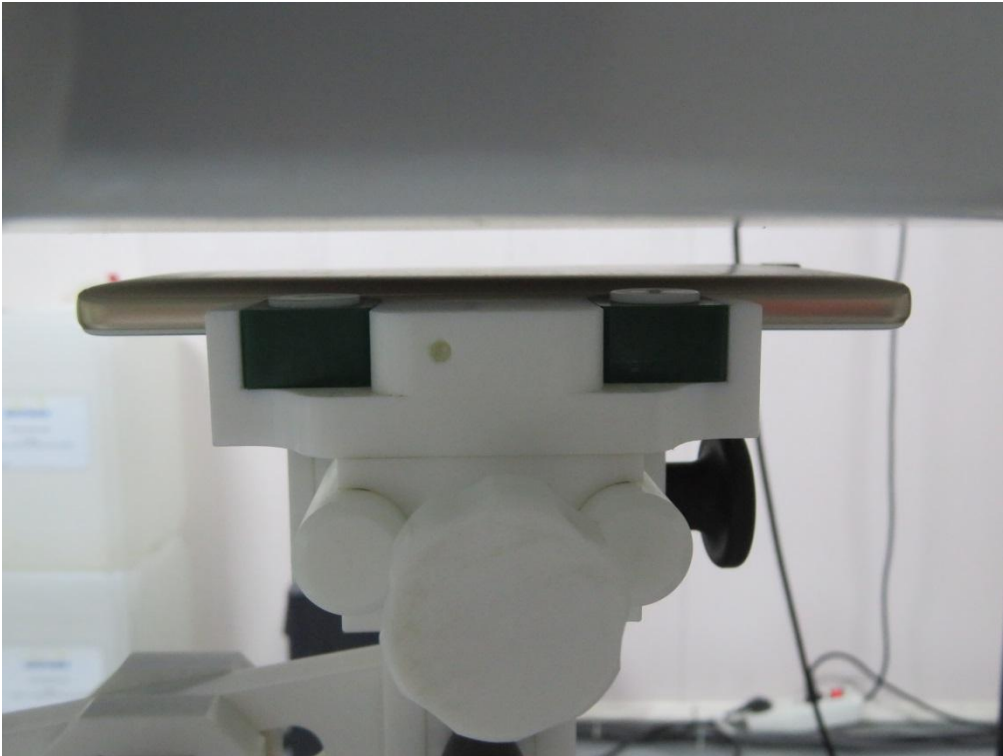


**Head Setup Photo (Right Tilt)**

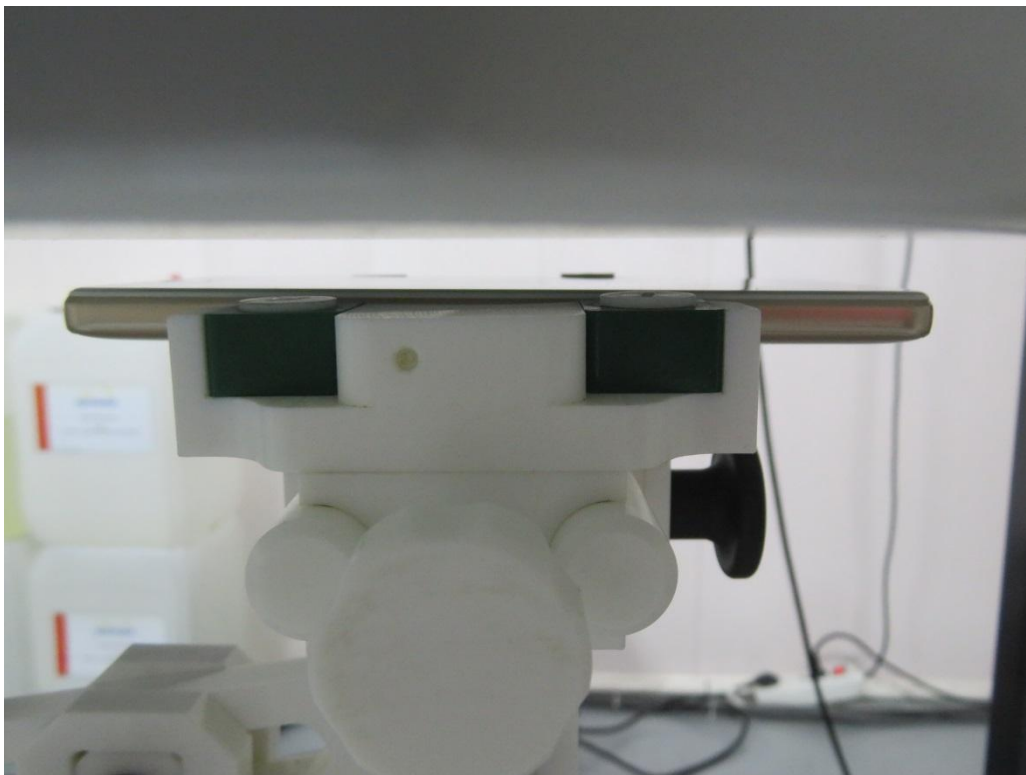




**10mm body-worn Back Side Setup Photo (hotspot)**



**10mm body-worn Front Side Setup Photo (hotspot)**



**10mm body-worn Left Side Setup Photo (hotspot)**



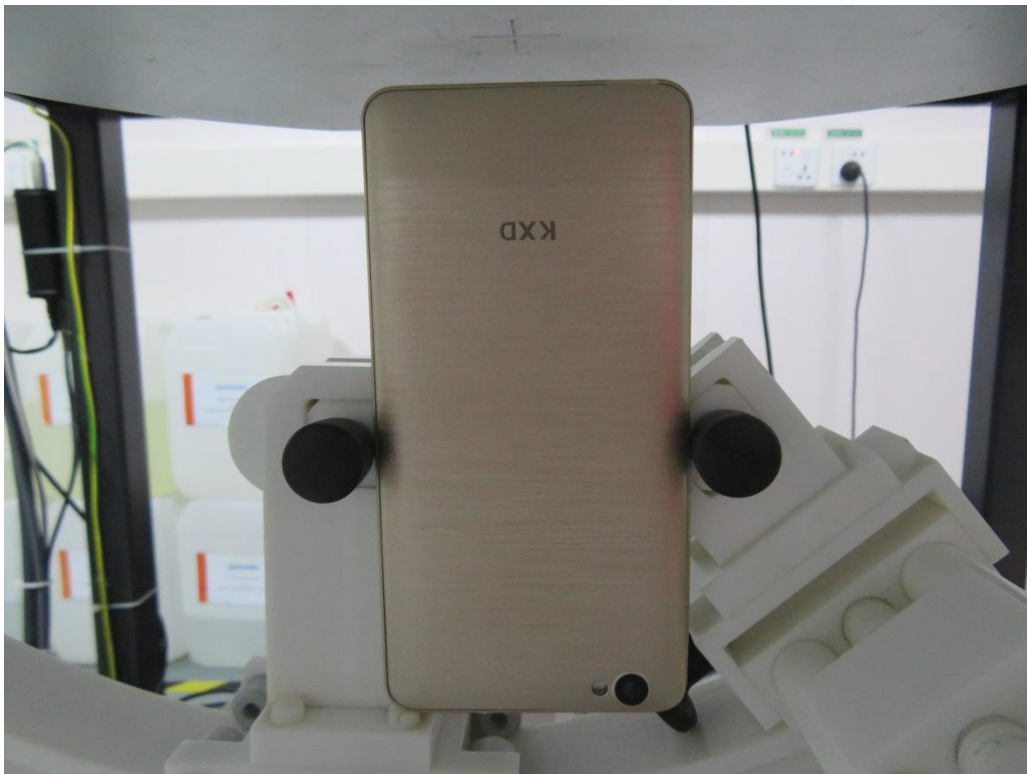
**10mm body-worn Right Side Setup Photo (hotspot)**



10mm body-worn Top Side Setup Photo (hotspot)



10mm body-worn Bottom Side Setup Photo (hotspot)





### 7. EUT Photographs

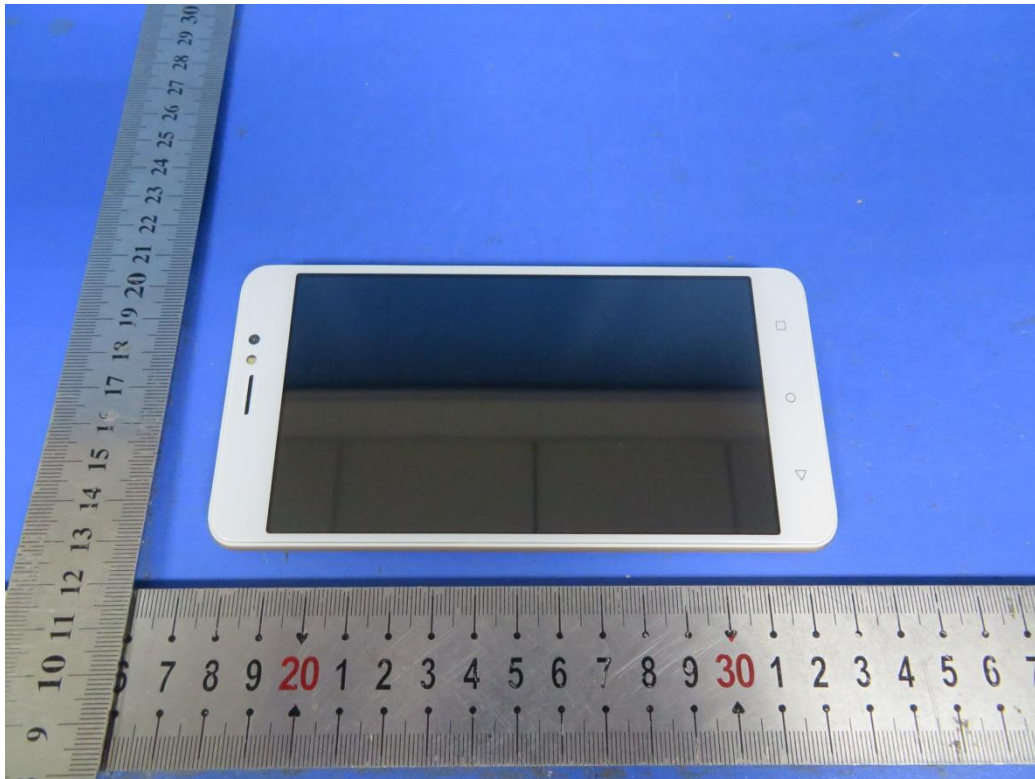


Fig.1

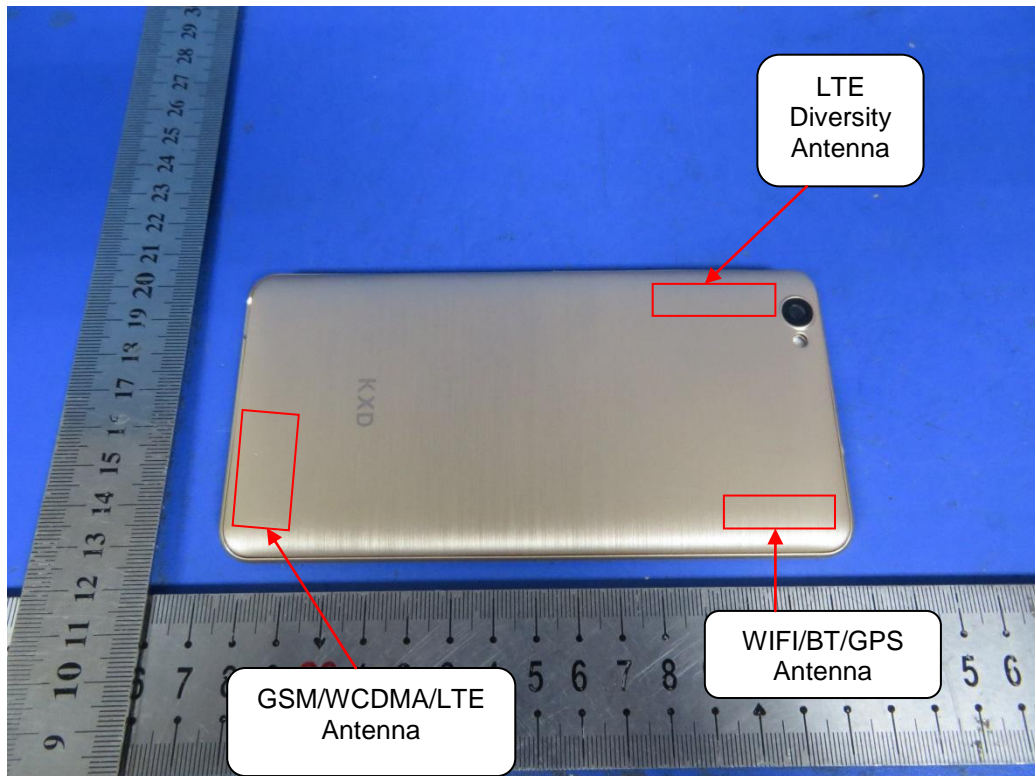


Fig.12

.....The End of Test Report.....