

FM23 Quick Guide

Power On

You can use the button on the back size (the right button as below) to power on or power off FM Transmitter. If the switch is on right side (RED color), means FM Transmitter is on working; if it's on left side, means FM Transmitter is off working.



USB port

Please see the USB port in left side. You can connect the iPhone4G with PC by using the USB cable for data transferring, charging; or charge your iPhone4G by connecting with cigarret lighter.

Connect the FM Transmitter with iPhone4G

Plug the FM Transmitter to iPhone4G, select the APP icon, the iPhone4G will appear "connecting", as shown (1).

When the system complete the connecting, it will get into the main interface, as shown (2):



(1) connecting



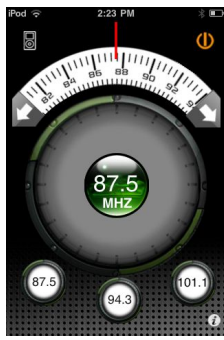
(2) main interface

Transmitter ON and OFF:

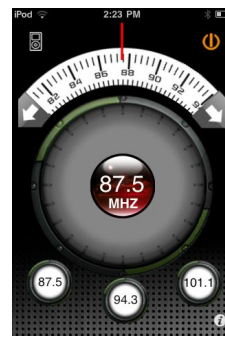
Click  on the APP interface, can turn on/off the FM Transmitter.

Meanwhile, the disc displayed on the center will use different color to show different status. GREEN means ON, and RED means OFF.

Shown as below:



(3) ON transmitting mode




(4) OFF transmitting mode


Adjust the Frequency:

1. Please rotate the big disk showed on the iPhone by truning your figure, can quickly adjust the frequency.

2. To click the arrow at both size ends of the ruler, can adjust the frequency single-step.

Select the song you want to transmit


Click  on top left size in APP interface and enter the menu, then select the music you want to transmit, shown as below.

Press  button again means Exit. If you don't press this Exit button, then the system will Exit automatically after a period of time.



(5) Select the music you want to transmit


Frequency area selection

Click  button on right corner side in main APP interface, and select the frequency area, as shown (illustrate 4), you will see Europe, USA, Japan, total 3 regions for your selection. After you select the area you are in, then click "DONE" to exit.





(4) FM area for selection

FM stations preset

Select the 3 buttons  shown on APP, can extract the current 3 preset stations which was saved, and transmit it.

Preset

Press  for more than 3 seconds, will enter the storage position, when the edge of the button starts flashing, you can adjust the radio. If you press  again, you will exit the storage units.

Note:

This equipment has been tested and found to comply with the limits for a Class B digital device, pursuant to Part 15 of the FCC Rules. These limits are designed to provide reasonable protection against harmful interference in a residential installation. This equipment generates, uses and can radiate radio frequency energy and, if not installed and used in accordance with the instructions, may cause harmful interference to radio communications. However, there is no guarantee that interference will not occur in a particular installation. If this equipment does cause harmful interference to radio or television reception, which can be determined by turning the equipment off and on, the user is encouraged to try to correct the interference by one or more of the following measures:

- Reorient or relocate the receiving antenna
- Increase the separation between the equipment and receiver.
- Connect the equipment into an outlet on a circuit different from that to which the receiver is connected.
- Consult the dealer or an experienced radio/TV technician for help.

This device complies with Part 15 of the FCC Rules. Operation is subject to the following two conditions: (1) this device may not cause harmful interference, and (2) this device must accept any interference received, including interference that may cause undesired operation.

The manufacturer is not responsible for any radio or TV interference caused by unauthorized modifications to this equipment. Such modifications could void the user's authority to operate the equipment.