

TEST REPORT

Reference No. : WTS15S1136732E
FCC ID : ZRH20150916
Applicant : SHENZHEN YUXINXIN ELECTRONICS CO.,LTD.
Address : Building 7, Xinxing Industrial Park, Fuyong Town Bao'an District,
Shenzhen, China
Manufacturer : SHENZHEN YUXINXIN ELECTRONICS CO.,LTD.
Address : Building 7, Xinxing Industrial Park, Fuyong Town Bao'an District,
Shenzhen, China
Product Name : Wireless headphone(RX)
Model No. : YU-EW218, YU-RF1200, YU-RF1100, DD518, DD519, YU-EW219,
RF1000, RF1006, RF1008, RF1009, RF1102, RF8131
Standards : FCC PART15 SUBPART B: 2014
Date of Receipt sample : Nov. 06, 2015
Date of Test : Nov. 06 - 10, 2015
Date of Issue : Nov. 18, 2015
Test Result : **Pass**

Remarks:

The results shown in this test report refer only to the sample(s) tested, this test report cannot be reproduced, except in full, without prior written permission of the company. The report would be invalid without specific stamp of test institute and the signatures of compiler and approver.

Prepared By:

Waltek Services (Shenzhen) Co., Ltd.

Address: 1/F., Fukangtai Building, West Baima Road, Songgang Street, Baoan District, Shenzhen,
Guangdong, China
Tel :+86-755-83551033
Fax:+86-755-83552400

Compiled by:

Lake.Xie

Lake.Xie / Test Engineer

Approved by

Philo Zhong
A circular blue stamp with the text "WALTEK SERVICES CO., LTD." around the top edge and "WALTEK TEST REPORT" around the bottom edge. In the center, there is a stylized logo and the name "Philo Zhong" written in cursive over it.

Philo Zhong / Manager

1 Test Summary

Test Item	Test Requirement	Class	Test Method	Test Result
Power Line Conducted Emission (150kHz to 30MHz)	FCC PART 15, SUBPART B: 2014	Class B	ANSI C63.4: 2003	N/A
Radiated Emission (30MHz to 1GHz)	FCC PART 15, SUBPART B: 2014	Class B	ANSI C63.4: 2003	Pass
Radiated Emission (Above 1GHz)	FCC PART 15, SUBPART B: 2014	Class B	ANSI C63.4: 2003	Pass

Remark:

Pass Test item meets the requirement

Fail Test item does not meet the requirement

N/A Test case does not apply to the test object

2 Contents

	Page
COVER PAGE	1
1 TEST SUMMARY	2
2 CONTENTS	3
3 GENERAL INFORMATION	4
3.1 GENERAL DESCRIPTION OF E.U.T.	4
3.2 DETAILS OF E.U.T.....	4
3.3 STANDARDS APPLICABLE FOR TESTING.....	4
3.4 TEST FACILITY.....	4
3.5 SUBCONTRACTED.....	5
3.6 ABNORMALITIES FROM STANDARD CONDITIONS.....	5
4 EQUIPMENT USED DURING TEST	6
4.1 EQUIPMENT LIST	6
4.2 DESCRIPTION OF SUPPORT UNITS	6
4.3 MEASUREMENT UNCERTAINTY	6
5 EMISSION TEST RESULTS	7
5.1 RADIATION EMISSION, 30MHZ TO 1000MHZ	7
5.2 RADIATION EMISSION, ABOVE 1000MHZ.....	10
6 PHOTOGRAPHS – TEST SETUP	13
6.1 PHOTOGRAPH – RADIATED EMISSION TEST SETUP FOR 30MHZ~1000MHZ	13
6.2 PHOTOGRAPH –RADIATED EMISSION TEST SETUP FOR ABOVE 1GHZ	13
7 PHOTOGRAPHS – CONSTRUCTIONAL DETAILS	14
7.1 EUT – APPEARANCE VIEW	14
7.2 EUT – OPEN VIEW.....	17

3 General Information

3.1 General Description of E.U.T.

Product Name	:	Wireless headphone(RX)
Model No.	:	YU-EW218, YU-RF1200, YU-RF1100, DD518, DD519, YU-EW219, RF1000, RF1006, RF1008, RF1009, RF1102, RF8131
Model Differences	:	Only the appearance color is different.
Type of Modulation	:	FM
Receiver Frequency Range	:	915.5-916.5MHz
The Lowest Oscillator	:	7.6MHz
Antenna installation	:	integrated Antenna
Remark	:	The model YU-EW218 is the tested sample.

3.2 Details of E.U.T.

Technical Data : Input: DC 2*1.5V AA Battery

3.3 Standards Applicable for Testing

The tests were performed according to following standards:

FCC PART 15, SUBPART B: Electronic Code of Federal Regulations- Unintentional Radiators 2014

3.4 Test Facility

The test facility has a test site registered with the following organizations:

- **IC – Registration No.: 7760A-1**

Waltek Services(Shenzhen) Co., Ltd. has been registered and fully described in a report filed with the Industry Canada. The acceptance letter from the Industry Canada is maintained in our files. Registration 7760A-1, October 15, 2015.

- **FCC – Registration No.: 880581**

Waltek Services (Shenzhen) Co., Ltd. has been registered and fully described in a report filed with the (FCC) Federal Communications Commission. The acceptance letter from the FCC is maintained in our files. Registration 880581, April 29, 2014.

- **FCC – Registration No.: 328995**

Waltek Services(Shenzhen) Co., Ltd. EMC Laboratory `has been registered and fully described in a report filed with the (FCC) Federal Communications Commission. The acceptance letter from the FCC is maintained in our files. Registration 328995 December 3, 2014.

3.5 Subcontracted

Whether parts of tests for the product have been subcontracted to other labs:

Yes No

If Yes, list the related test items and lab information:

Test Lab: N/A

Lab address: N/A

Test items: N/A

3.6 Abnormalities from Standard Conditions

None.

4 Equipment Used during Test

4.1 Equipment List

3m Semi-anechoic Chamber for Radiation(TDK)						
Item	Equipment	Manufacturer	Model No.	Serial No	Last Calibration Date	Calibration Due Date
1	Test Receiver	R&S	ESCI	101296	Apr.10, 2015	Apr.09, 2016
2	Trilog Broadband Antenna	SCHWARZBECK	VULB9160	9160-3325	Apr.10, 2015	Apr.09, 2016
3	Amplifier	Compliance pirection systems inc	PAP-0203	22024	Apr.10, 2015	Apr.09, 2016
4	Cable	HUBER+SUHNER	CBL2	525178	Apr.10, 2015	Apr.09, 2016
3m Semi-anechoic Chamber for Radiation, Above 1GHz						
Item	Equipment	Manufacturer	Model No.	Serial No.	Last Calibration Date	Calibration Due Date
1	EMC Analyzer	Agilent	E7405A	MY45114 943	Sep.15,2015	Sep.14,2016
2	Broad-band Horn Antenna	SCHWARZBECK	BBHA 9120 D	667	Apr.19,2015	Apr.18,2016
3	Broadband Preamplifier	COMPLIANCE DIRECTION	PAP-1G18	2004	Mar.17,2015	Mar.16,2016
4	Coaxial Cable (above 1GHz)	Top	1GHz- 25GHz	EW02014 -7	Apr.10, 2015	Apr.09, 2016

4.2 Description of Support Units

Equipment	Manufacturer	Model No.	Series No.
/	/	/	/

4.3 Measurement Uncertainty

Test Item	Frequency Range	Uncertainty	Note
Conduction disturbance	150kHz~30MHz	±3.64dB	(1)
Radiation Emission	30MHz~1000MHz	±5.03dB	(1)
	1GHz~6GHz	±5.47dB	(1)

(1) This uncertainty represents an expanded uncertainty expressed at approximately the 95% confidence level using a coverage factor of $k=2$.

5 Emission Test Results

5.1 Radiation Emission, 30MHz to 1000MHz

Test Requirement..... : FCC PART 15, SUBPART B
 Test Method : ANSI C63.4
 Test Result : Pass
 Frequency Range..... : 30MHz to 1000MHz
 Class. : Class B
 Limit..... :

Frequency (MHz)	Distance (Meter)	Limit (dB μ V/m)
		Quasi-peak
30 to 88	3	40
88 to 216	3	43.5
216 to 960	3	46
960 to 1000	3	54

5.1.1 E.U.T. Operation

Operating Environment:

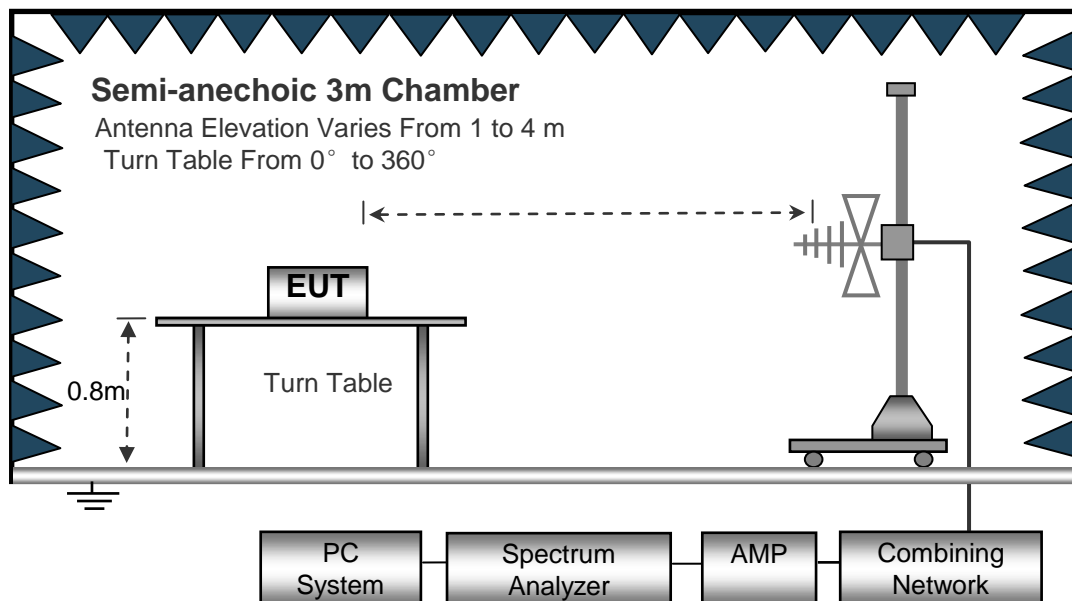
Temperature : 23°C
 Humidity : 54.1%RH
 Atmospheric Pressure..... : 101kPa

EUT Operation:

Input Voltage : DC 3V
 Operating Mode : Communication mode

5.1.2 Block Diagram of Test Setup

The radiated emission tests were performed in the 3m Semi- Anechoic Chamber test site, using the setup accordance with the ANSI C63.4.

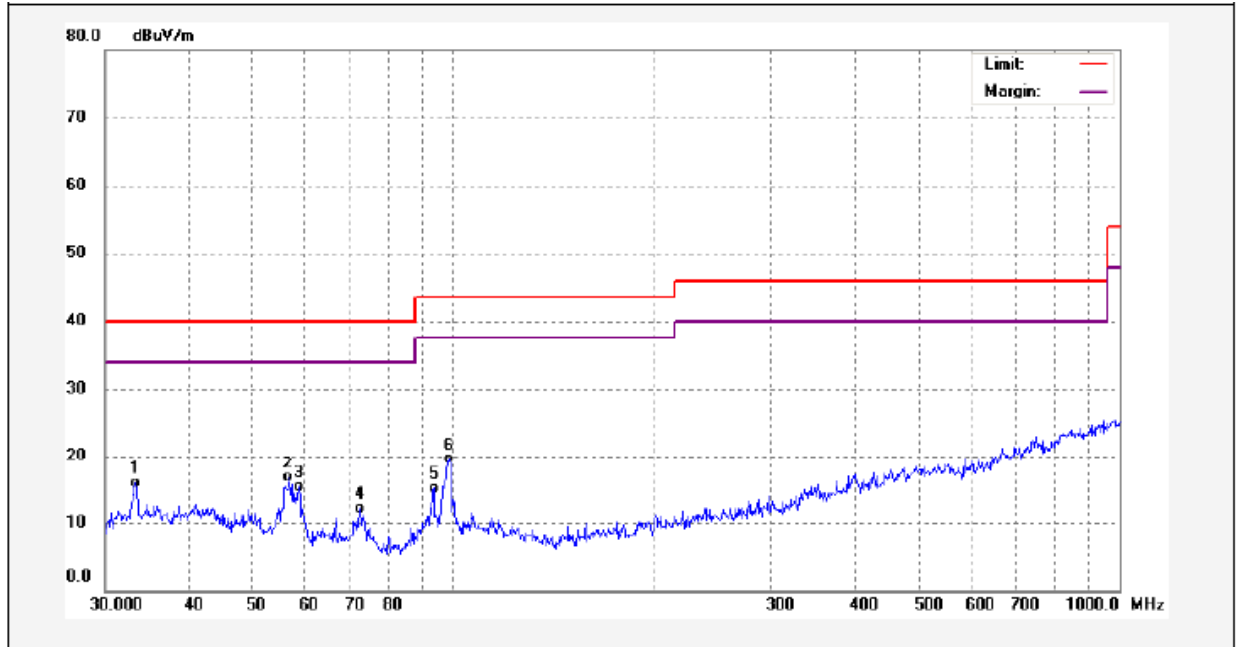


5.1.3 Measurement Data

The maximised peak emissions from the EUT was scanned and measured for both the Antenna Vertical Polarization and Antenna Horizontal Polarization. Quasi-peak measurements were performed if peak emissions were within 6dB of the Quasi-peak limit line.

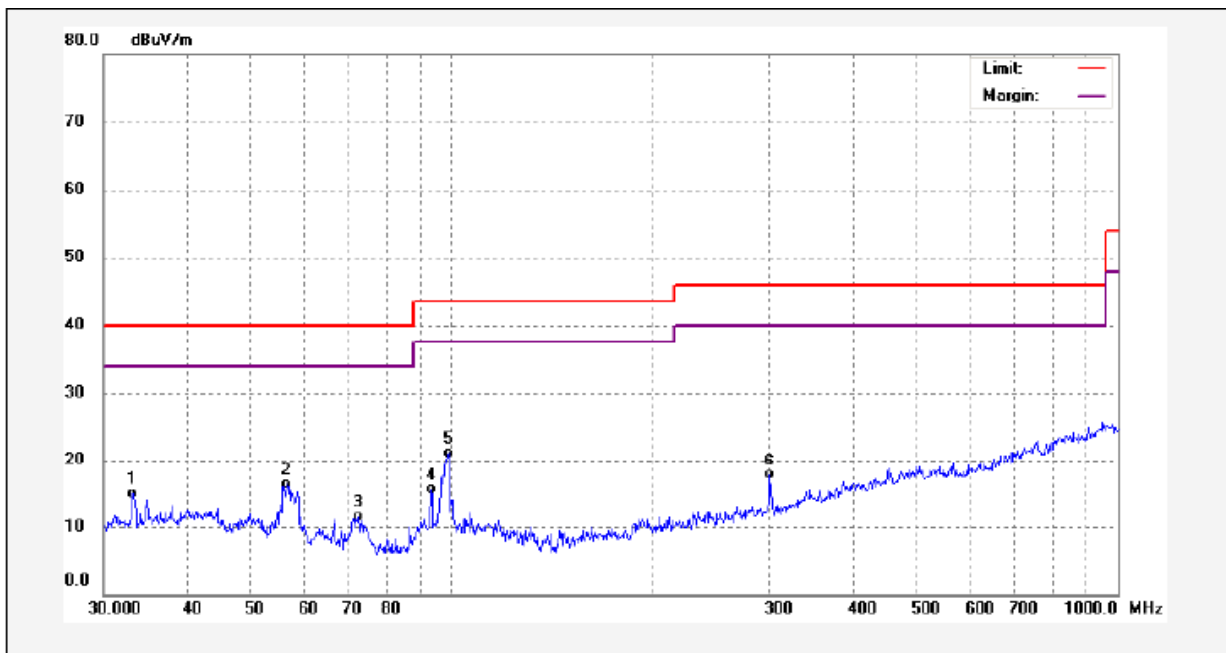
5.1.4 Radiated Emission Test Data, 30MHz to 1000MHz

Antenna Polarization: Vertical



No.	Freq. (MHz)	Reading (dBuV/m)	Factor (dB)	Result (dBuV/m)	Limit (dBuV/m)	Margin (dB)	Detector	Remark
1	33.3279	32.23	-16.33	15.90	40.00	-24.10	QP	
2	56.5929	34.76	-18.07	16.69	40.00	-23.31	QP	
3	58.6126	34.13	-18.78	15.35	40.00	-24.65	QP	
4	72.3376	32.30	-20.19	12.11	40.00	-27.89	QP	
5	93.4402	32.98	-17.91	15.07	43.50	-28.43	QP	
6	98.4866	37.41	-17.87	19.54	43.50	-23.96	QP	

Antenna Polarization: Horizontal



No.	Freq. (MHz)	Reading (dBuV/m)	Factor (dB)	Result (dBuV/m)	Limit (dBuV/m)	Margin (dB)	Detector	Remark
1	33.2112	31.24	-16.36	14.88	40.00	-25.12	QP	
2	56.3948	34.29	-17.98	16.31	40.00	-23.69	QP	
3	72.3376	31.77	-20.19	11.58	40.00	-28.42	QP	
4	93.1132	33.40	-17.96	15.44	43.50	-28.06	QP	
5	98.8326	38.99	-17.90	21.09	43.50	-22.41	QP	
6	300.3672	32.93	-15.14	17.79	46.00	-28.21	QP	

5.2 Radiation Emission, Above 1000MHz

Test Requirement : FCC PART 15, SUBPART B
 Test Method : ANSI C63.4
 Test Result : Pass
 Frequency Range : 1GHz~5GHz
 Class. : Class B
 Limit. :

Frequency Range (MHz)	Distance (Meter)	Average Limit dB(uV/m)	Peak Limit (dBuV/m)
Above 1GHz	3	54	74

5.2.1 E.U.T. Operation

Operating Environment:

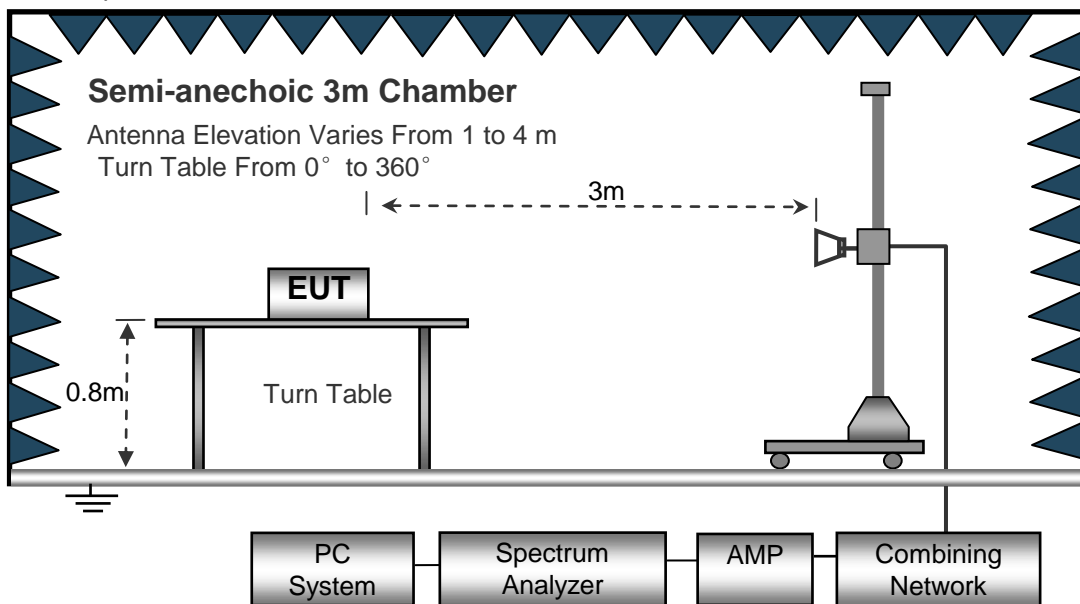
Temperature..... : 23°C
 Humidity : 52%RH
 Atmospheric Pressure..... : 101kPa

EUT Operation:

Input Voltage : DC 3V
 Operating Mode..... : Communication mode

5.2.2 Block Diagram of Test Setup

The radiated emission tests were performed in the 3m Semi- Anechoic Chamber test site, using the setup accordance with the ANSI C63.4.

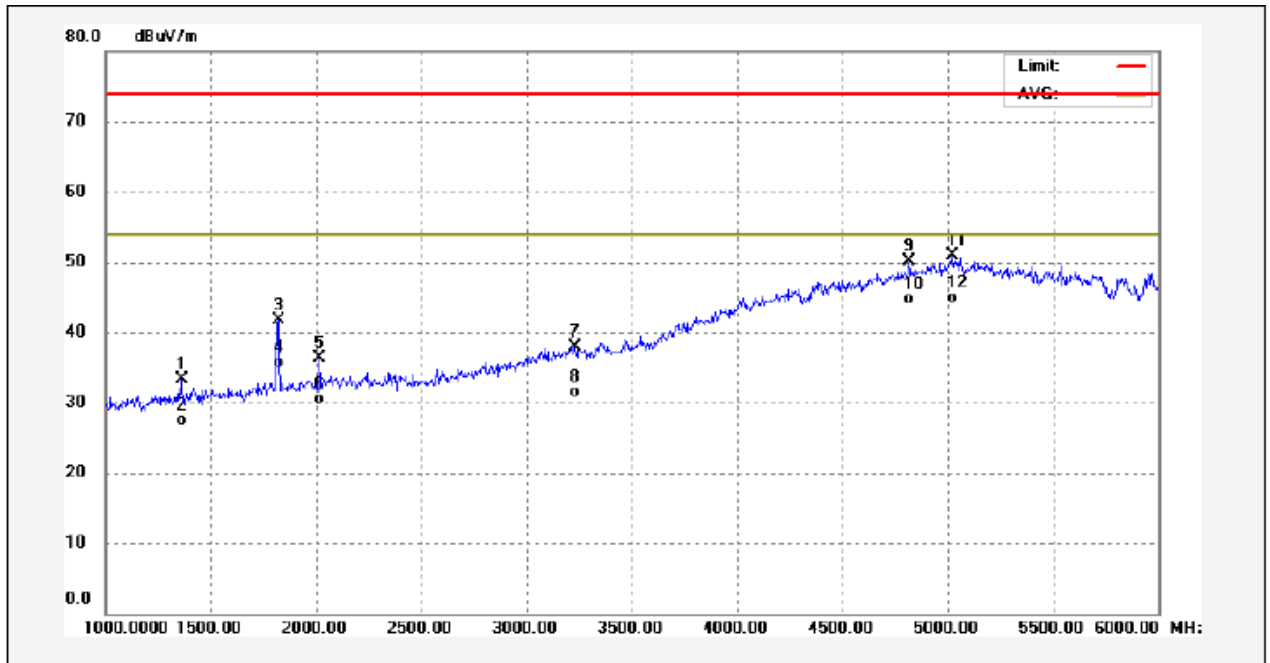


5.2.3 Measurement Data

The maximised peak emissions from the EUT was scanned and measured for both the Antenna Vertical Polarization and Antenna Horizontal Polarization. Average measurements were performed if peak emissions were within 6dB of the average limit line

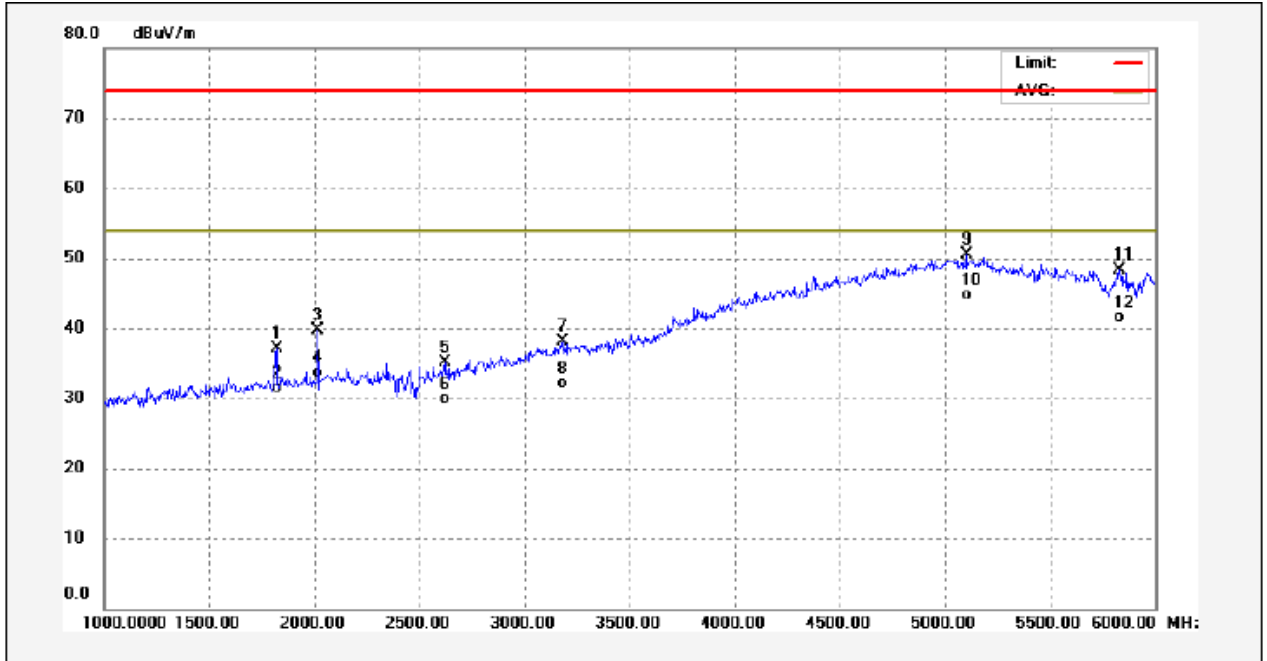
5.2.4 Radiated Emission test data, Above 1000MHz

Antenna Polarization: Vertical



No.	Freq. (MHz)	Reading (dBuV/m)	Factor (dB)	Result (dBuV/m)	Limit (dBuV/m)	Margin (dB)	Detector	Remark
1	1360.000	51.68	-18.35	33.33	74.00	-40.67	peak	
2	1360.000	45.87	-18.35	27.52	54.00	-26.48	AVG	
3	1820.000	58.66	-16.89	41.77	74.00	-32.23	peak	
4	1820.000	52.51	-16.89	35.62	54.00	-18.38	AVG	
5	2015.000	52.53	-16.31	36.22	74.00	-37.78	peak	
6	2015.000	46.89	-16.31	30.58	54.00	-23.42	AVG	
7	3230.000	50.36	-12.53	37.83	74.00	-36.17	peak	
8	3230.000	44.12	-12.53	31.59	54.00	-22.41	AVG	
9	4815.000	51.42	-1.31	50.11	74.00	-23.89	peak	
10	4815.000	46.00	-1.31	44.69	54.00	-9.31	AVG	
11	5025.000	51.24	-0.31	50.93	74.00	-23.07	peak	
12	5025.000	45.20	-0.31	44.89	54.00	-9.11	AVG	

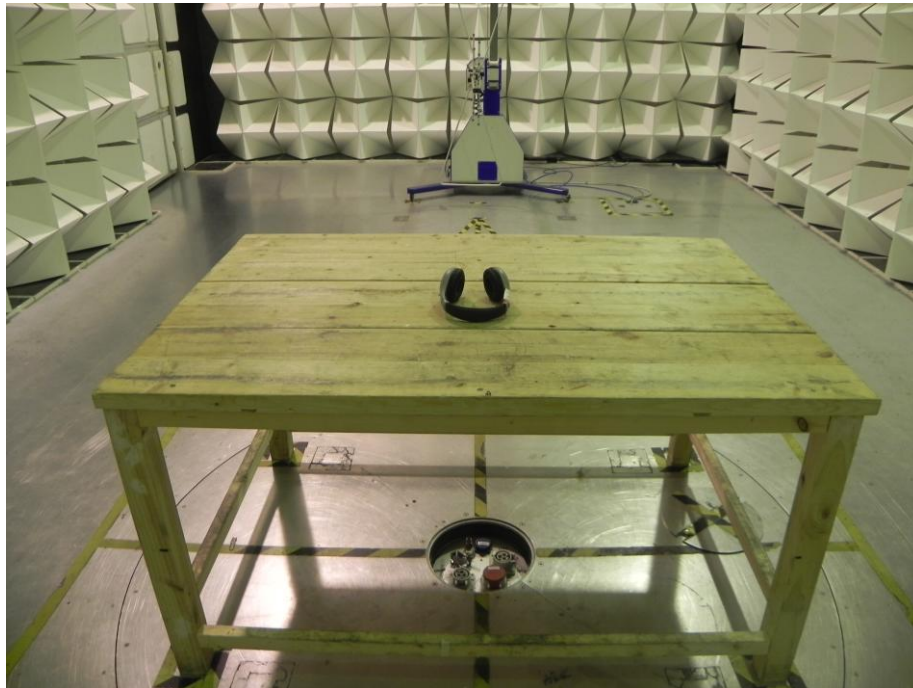
Antenna Polarization: Horizontal



No.	Freq. (MHz)	Reading (dBuV/m)	Factor (dB)	Result (dBuV/m)	Limit (dBuV/m)	Margin (dB)	Detector	Remark
1	1820.000	54.00	-16.89	37.11	74.00	-36.89	peak	
2	1820.000	48.45	-16.89	31.56	54.00	-22.44	AVG	
3	2015.000	56.09	-16.31	39.78	74.00	-34.22	peak	
4	2015.000	49.96	-16.31	33.65	54.00	-20.35	AVG	
5	2620.000	50.32	-15.31	35.01	74.00	-38.99	peak	
6	2620.000	45.15	-15.31	29.84	54.00	-24.16	AVG	
7	3185.000	50.88	-12.71	38.17	74.00	-35.83	peak	
8	3185.000	44.73	-12.71	32.02	54.00	-21.98	AVG	
9	5100.000	50.98	-0.54	50.44	74.00	-23.56	peak	
10	5100.000	45.33	-0.54	44.79	54.00	-9.21	AVG	
11	5830.000	50.32	-2.08	48.24	74.00	-25.76	peak	
12	5830.000	43.66	-2.08	41.58	54.00	-12.42	AVG	

6 Photographs – Test Setup

6.1 Photograph – Radiated Emission Test Setup for 30MHz~1000MHz



6.2 Photograph –Radiated Emission Test Setup for Above 1GHz



7 Photographs – Constructional Details

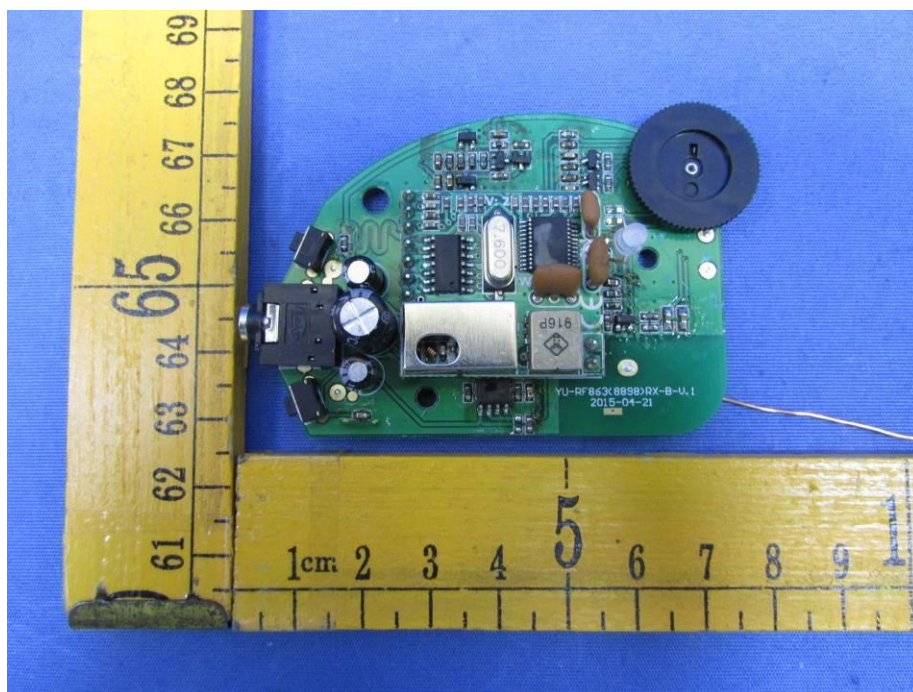
7.1 EUT – Appearance View

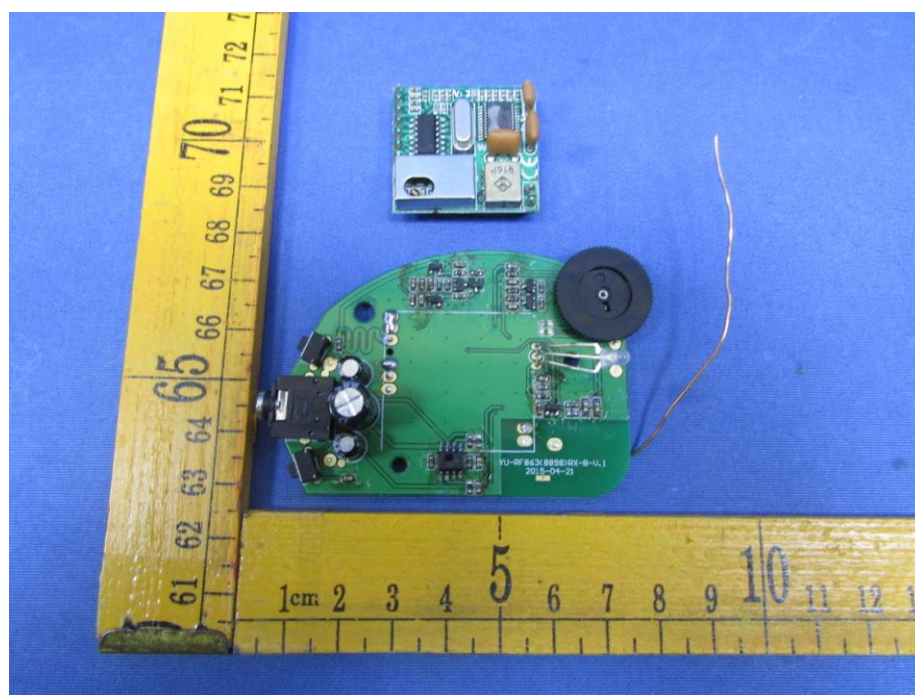
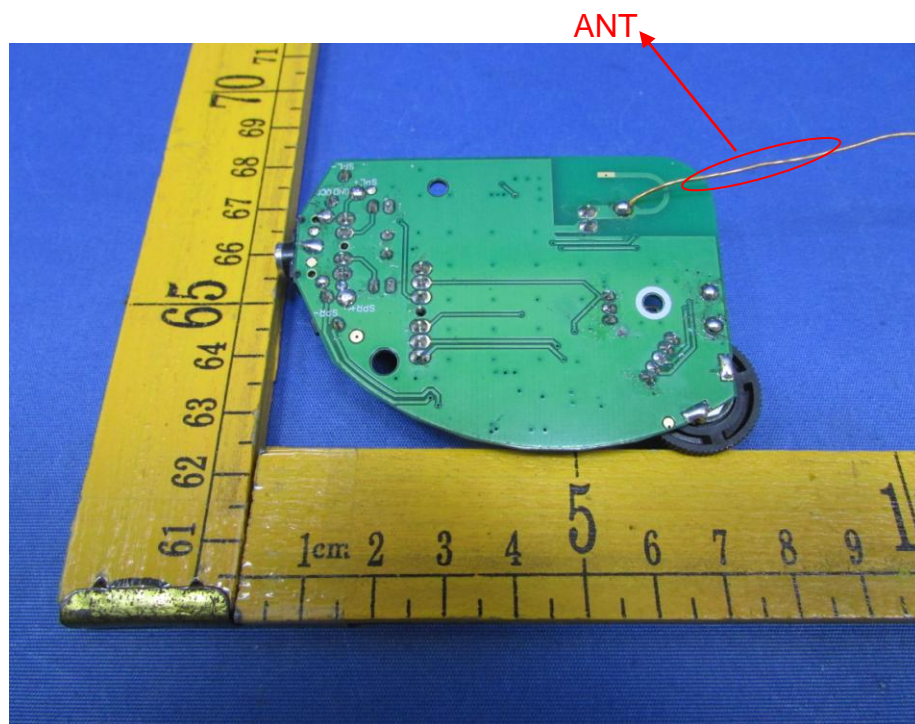


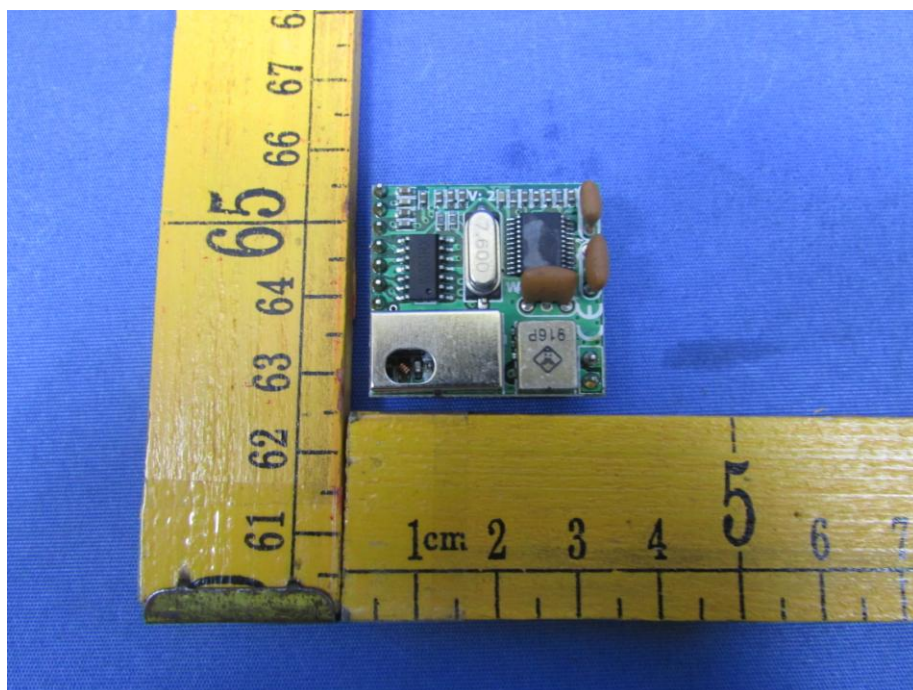
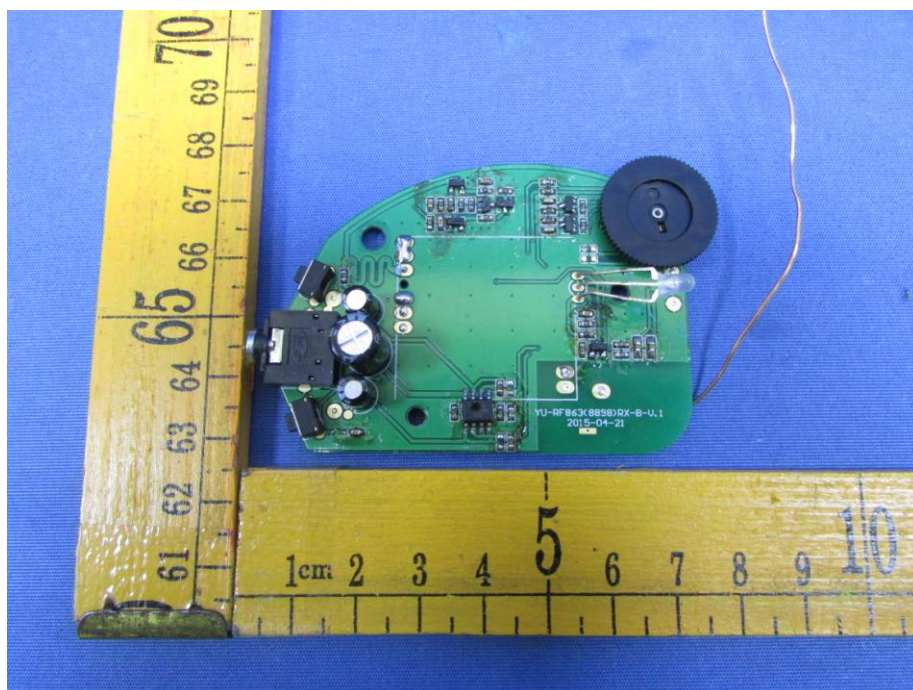


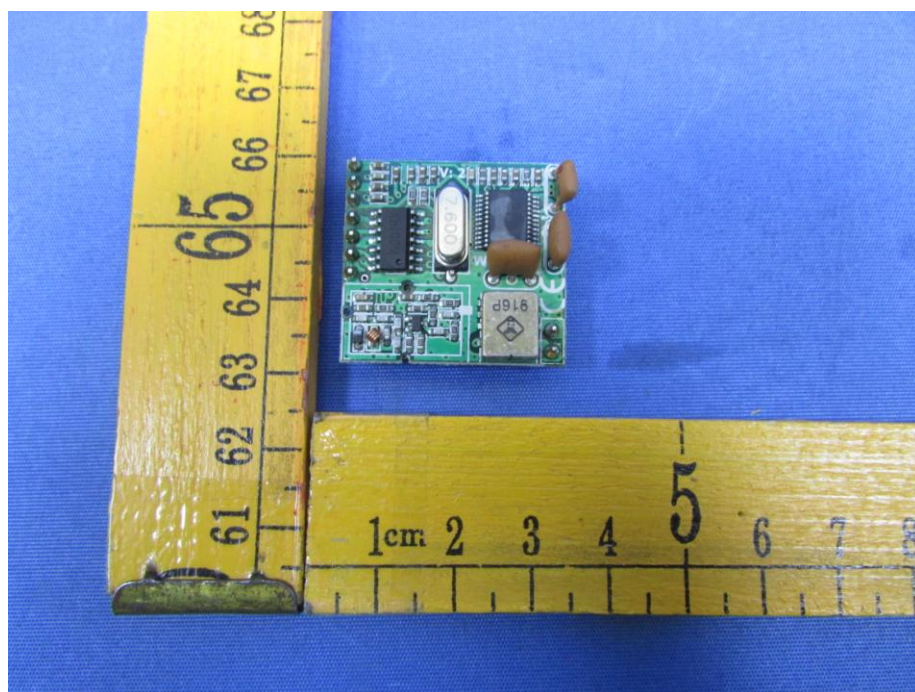
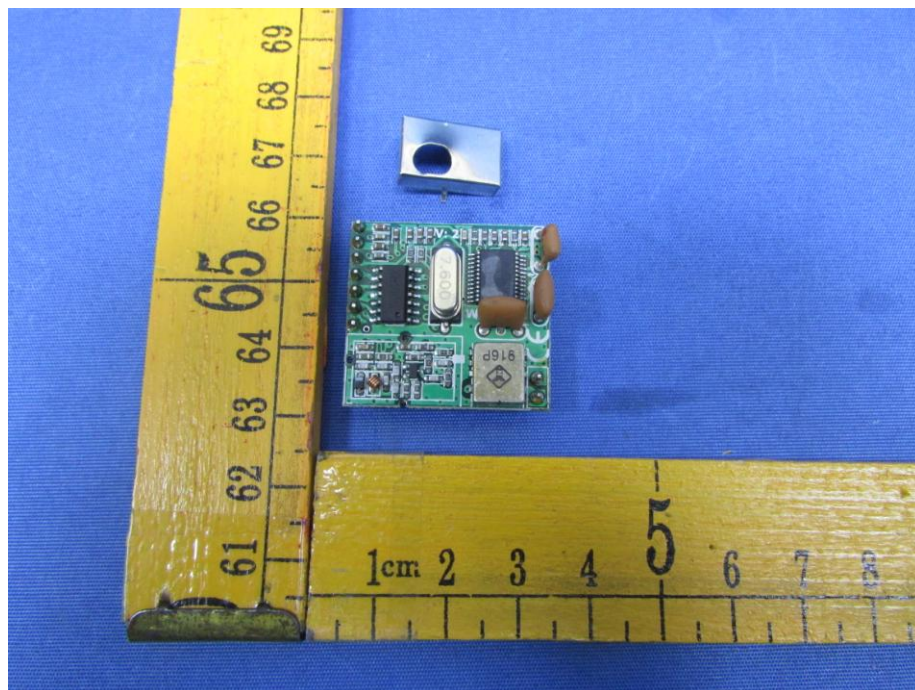


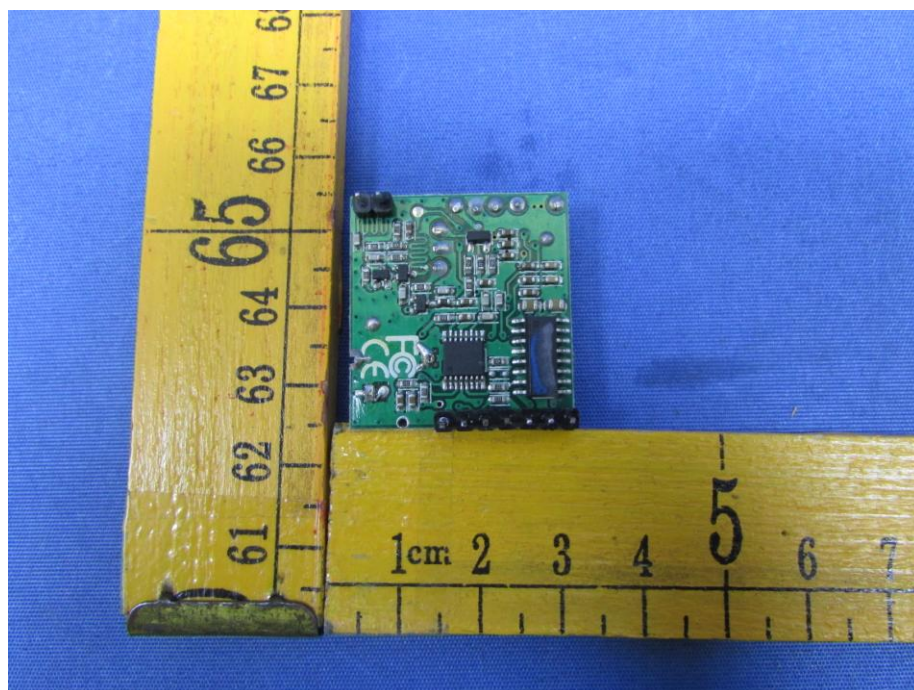
7.2 EUT – Open View











=====End of Report=====