

C-MOS run a round
around a magnetic
ring(25*10*15.7)

Modification specification

RF connecting line
should append a
magnetic ring and run
two rounds around
magnetic ring(16*8*12.)

2J1 together
with 2J2 add
a magnetic
ring and run
a round
around
The
specification
is 16*8*12

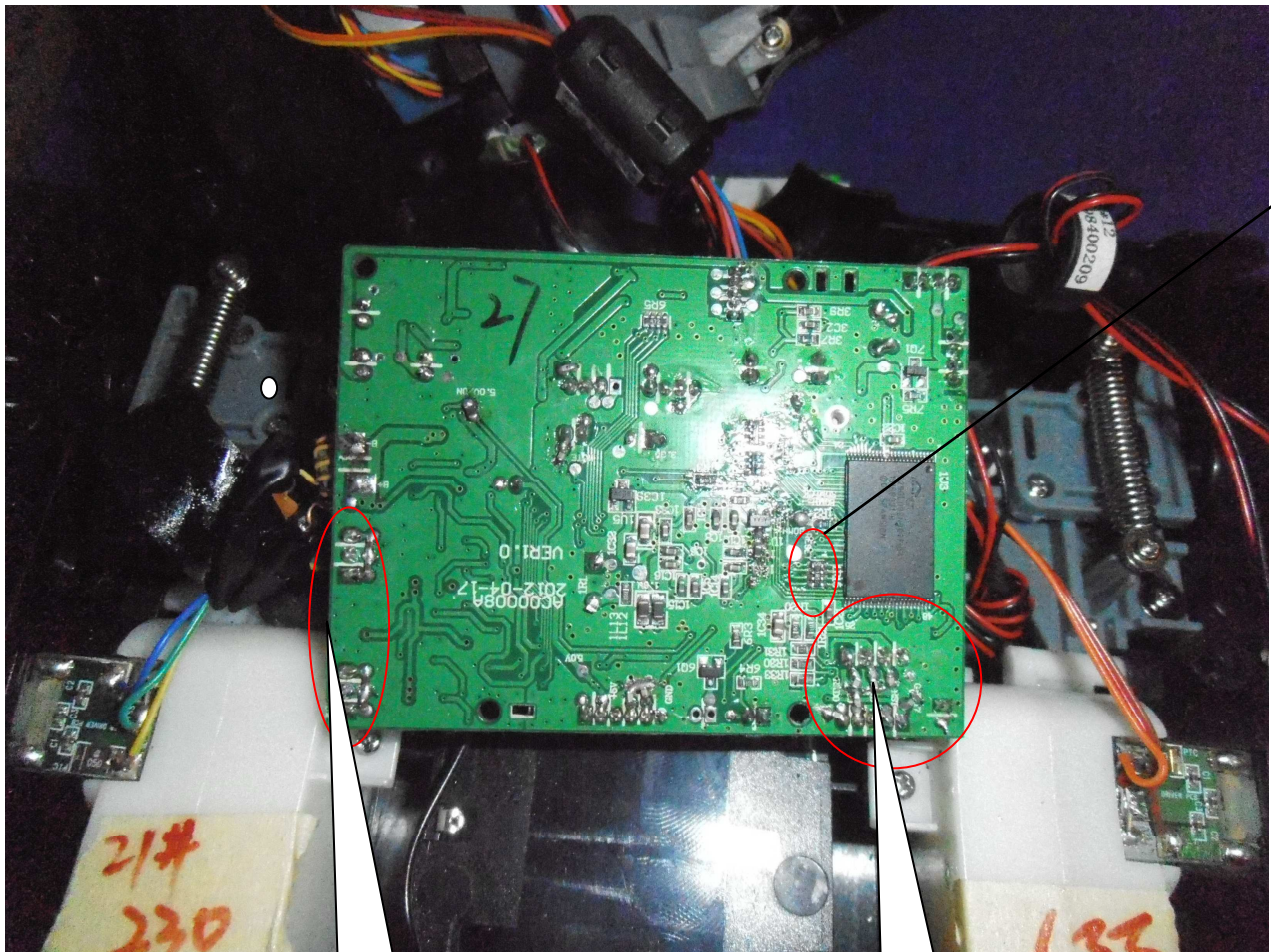
DC input should
add a Common
Mode Inductor
and a 104
Capacitor

PCB board
should
add a
piece of
copper
grounding

6J2 appends magnetic
ring (RC70B)

7J2 appends
a magnetic
ring
respectively
, the
material
number is
16*8*12

图一



change all
22 ohms
Resistors
to
180ohms.

2J12J2 motor output
should increase by
104 capacitor to
ground

1J1&1J2 signal
lines should
increase by 100P
capacitor to ground

图二