



SC-5050STCC-RGB-12-LLL-03

Features:

1. 5050 assembled LEDs
2. Wall-mount power supply;
3. RGB series with remote controller;
4. Custom packing.

Application:

1. Stage lighting
2. Festival, activities, exhibition lighting, etc
3. Backlight of signage
4. Contour lighting
5. Landscape decoration lighting



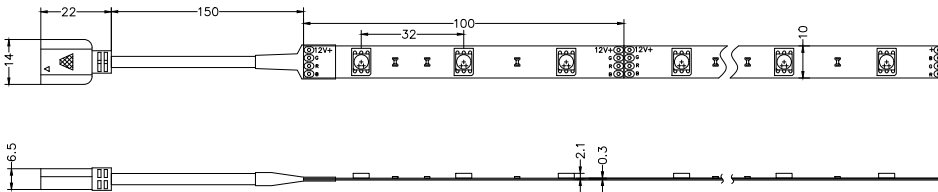
Technical parameters:

Model	Color	Lumen (mcd/LED)	LEDs Type	LEDs Qty (leds /m)	Beam angle(°)	DC Voltage(V)	Rated Watt (w/m)	IP	CRI
SC-5050STCC-RGB-12-LLL-03	R	/	5050	30	120	12	3.6	20/64	/
	G	/							
	B	/							

Dimension:

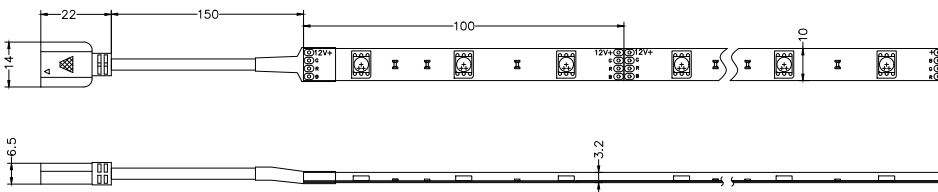
SC-5050ST-RGB-12-LLL-03

Size:(mm)



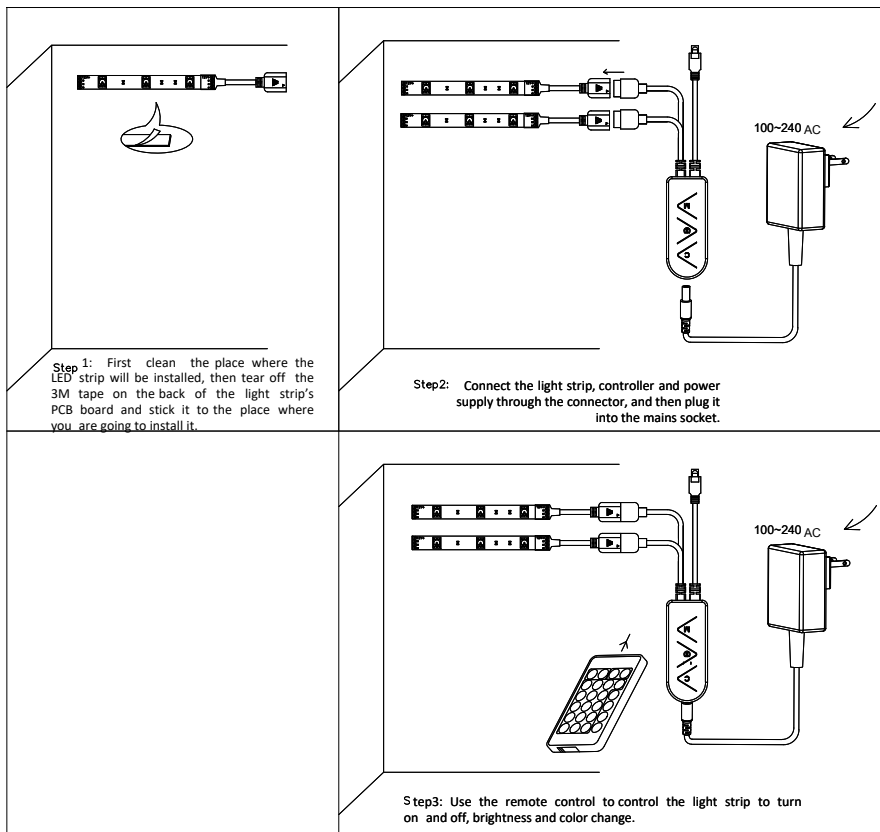
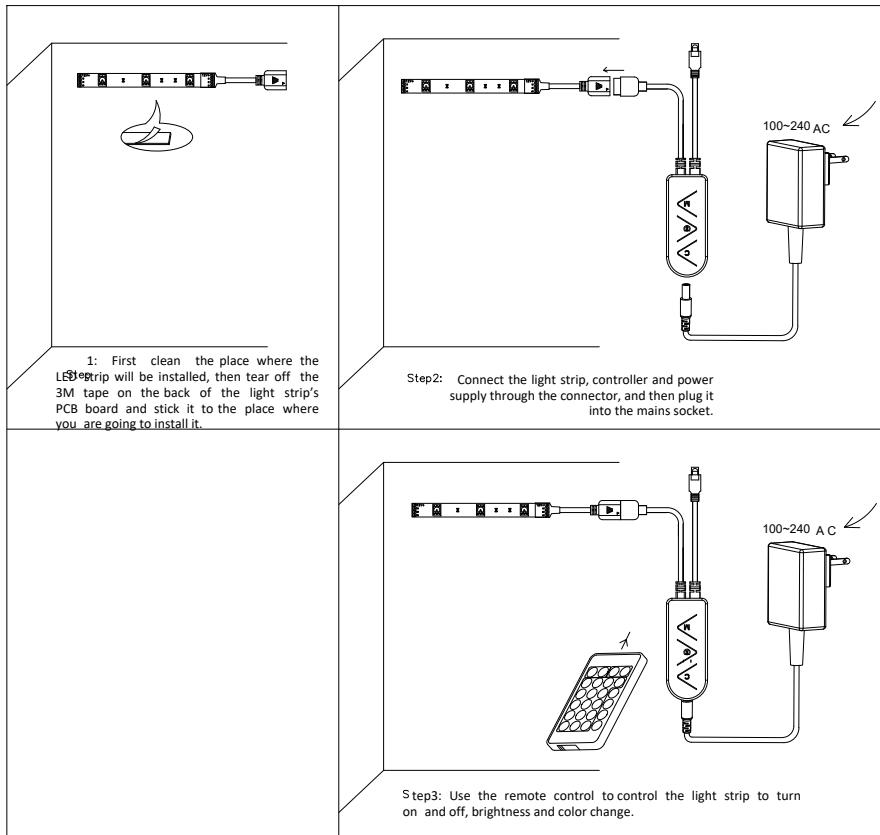
SC-5050STD-RGB-12-LLL-03

Size:(mm)





Installation:





🔧 Installation requirements:

1. The LED strip and accessories can't be squeezed and folded;
2. PCB conductive parts can't be damaged when installation;
3. Installation must conform to electrical safety standard. The LED strip can only be installed by professionals;
4. Ensure power supply transform operating load with transformer;
5. When install on metal or conductive surface, the contact must adopt insulation protection;
6. Pay attention to positive and negative polarities before installation, otherwise the LED strip may be damaged;
7. Please prevent static electricity when installation.
8. The product need anti-corrosion environment, such as, avoiding damp , water drop or other adverse elements.

FCC STATEMENT

This device complies with part 15 of the FCC Rules. Operation is subject to the following conditions:

1. This device may not cause harmful interference, and
2. This device must accept any interference received, including interference that may cause undesired operation.

CAUTION: Any changes or modifications not expressly approved by the party responsible for compliance could void the user's authority to operate the equipment

NOTE: This equipment has been tested and found to comply with the limits for a Class B digital device, pursuant to part 15 of the FCC Rules. These limits are designed to provide reasonable protection against harmful interference in a residential installation. This equipment generates, uses and can radiate radio frequency energy and, if not installed and used in accordance with the instructions, may cause harmful interference to radio communications. However, there is no guarantee that interference will not occur in a particular installation. If this equipment does not cause harmful interference to radio or television reception, which can be determined by turning the equipment off and on, the user is encouraged to try to correct the interference by one or more of the following measures:

- Reorient or relocate the receiving antenna.
- Increase the separation between the equipment and receiver.
- Connect the equipment into an outlet on a circuit different from that to which the receiver is connected.
- Consult an experienced radio/TV technician for help.

The distance between user and products should be no less than 20cm