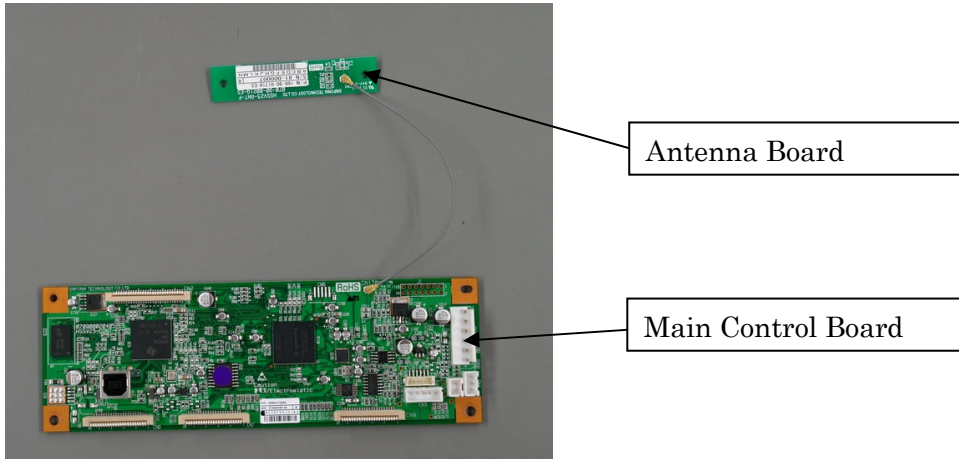
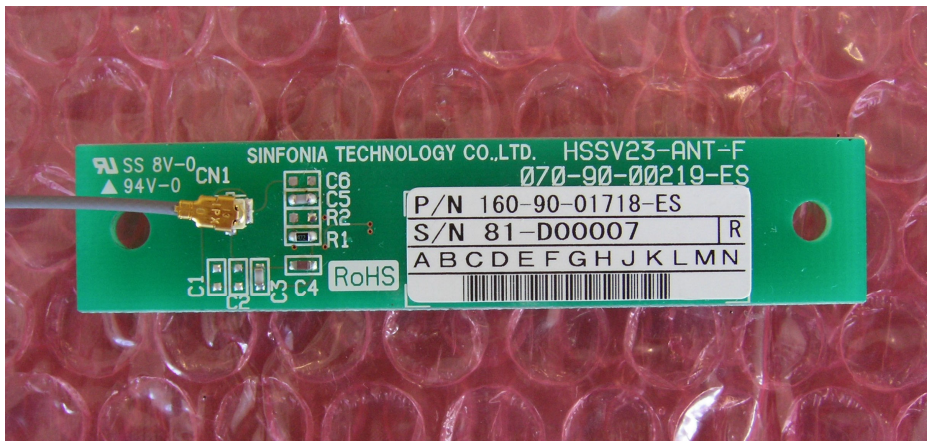


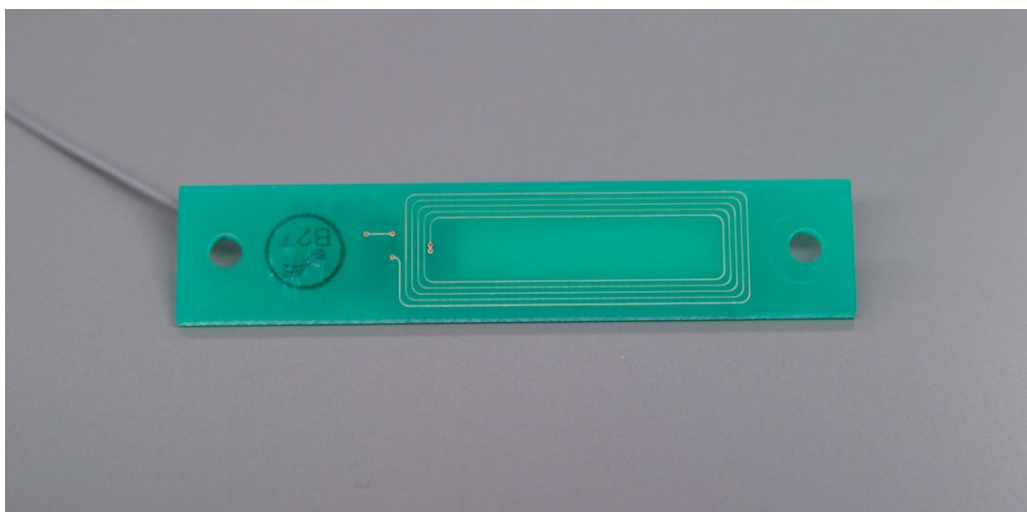
CHC-S6145-5 Product Photo (inside 1 of 4)



Antenna Board(Front side)

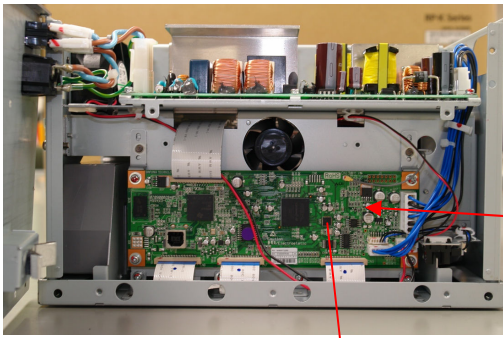


Antenna Board (Rear side)

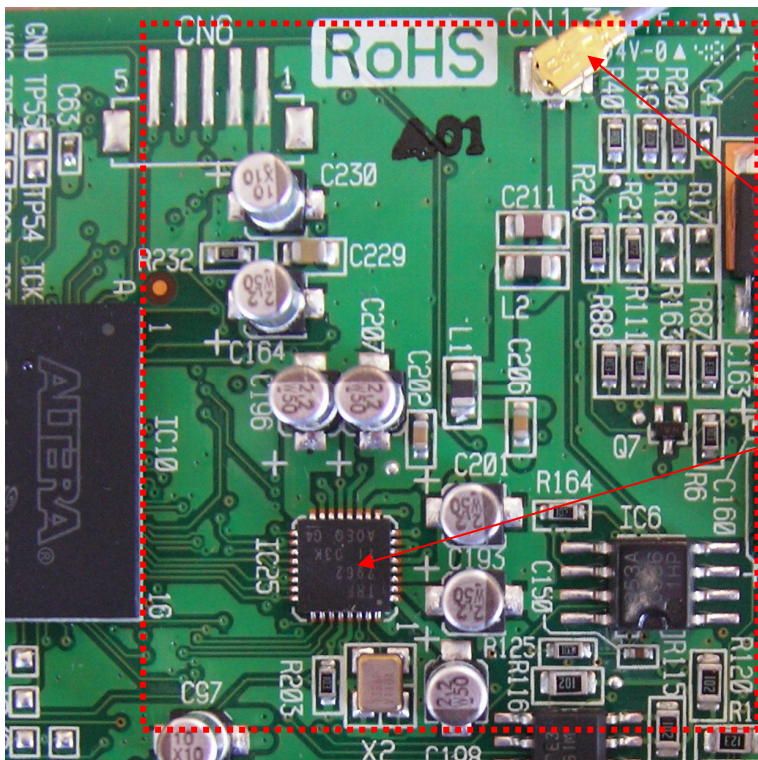


CHC-S6145-5 Product Photo (inside 2 of 4)

Rear side



Main Control Board

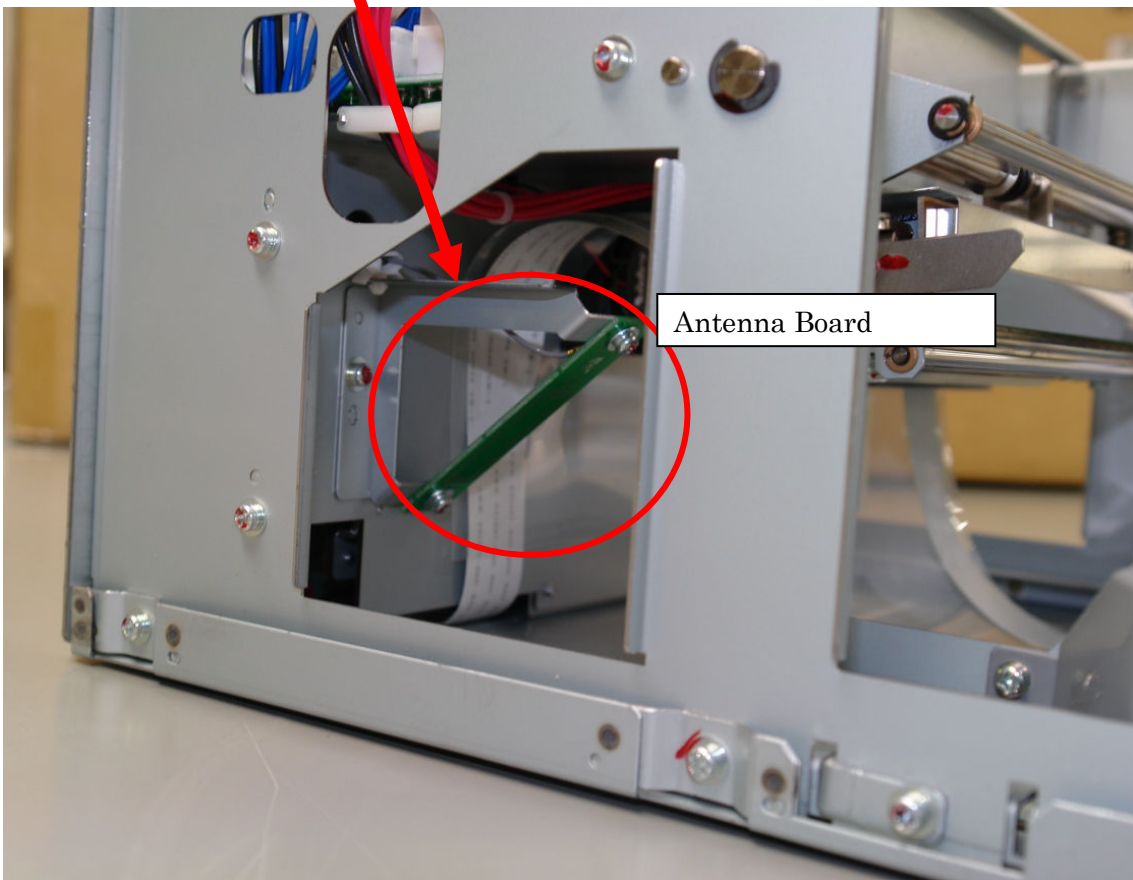
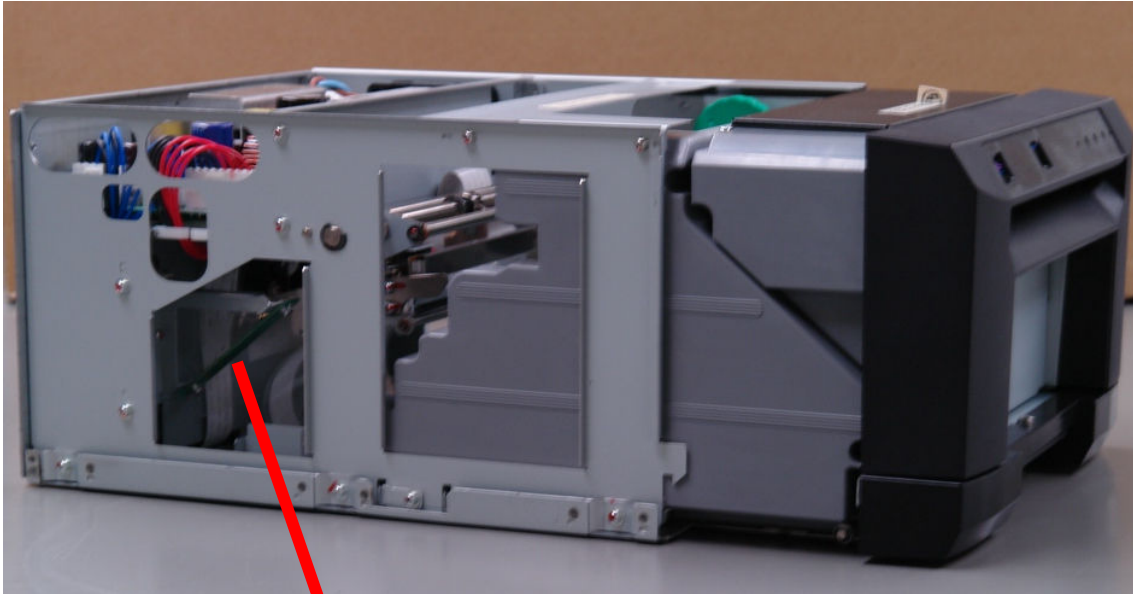


CN13

RFID LSI

CHC-S6145-5 Product Photo (inside 3 of 4)

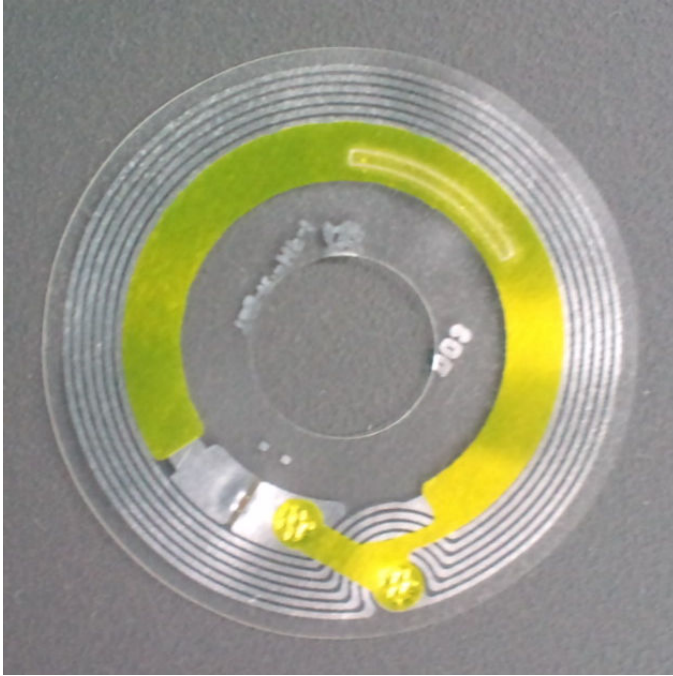
Left side



CHC-S6145-5 Product Photo (inside 4 of 4)

IC Tag is installed in the Ink Ribbon, and this IC Tag is used for Test.

IC_Tag (Front side)



IC_Tag (Rear side)

