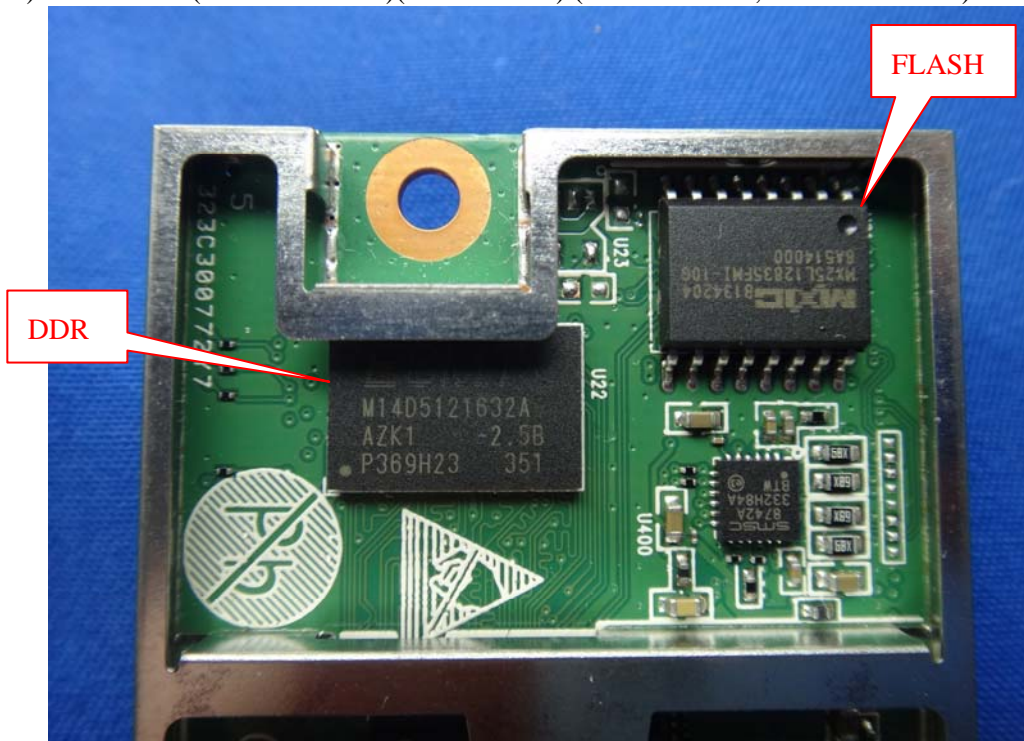


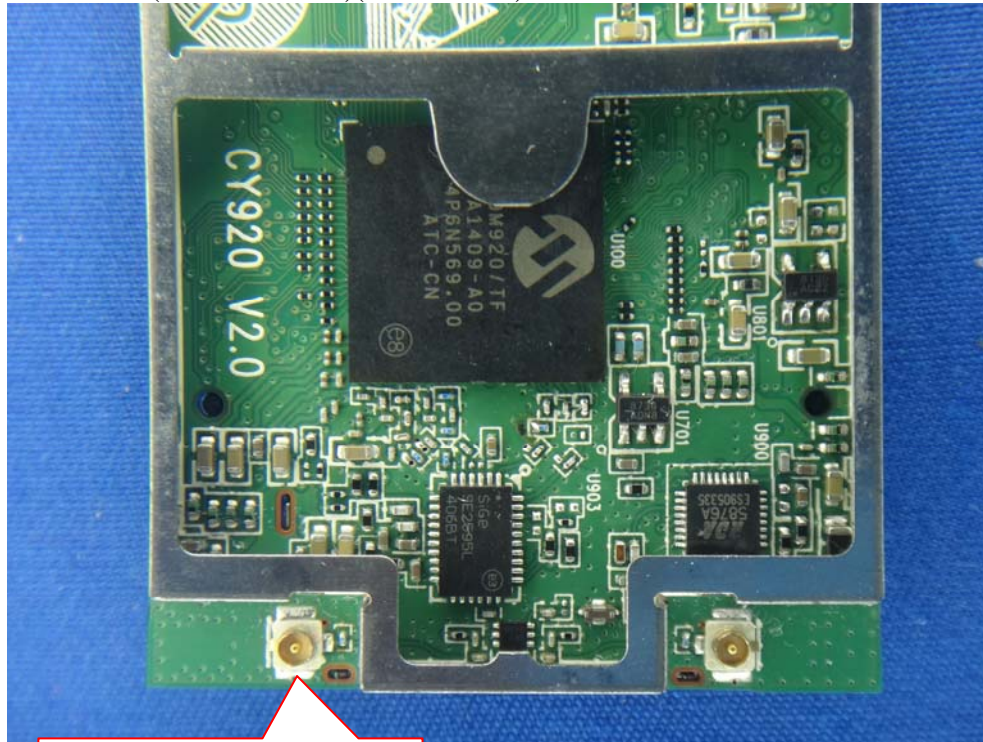
(9) EUT Photo (M/N: CY920-C)(Main Source)



(10) EUT Photo (M/N: CY920-C)(Main Source) (DDR / ESMT ; FLASH / MXIC)



(11) EUT Photo (M/N: CY920-C)(Main Source)

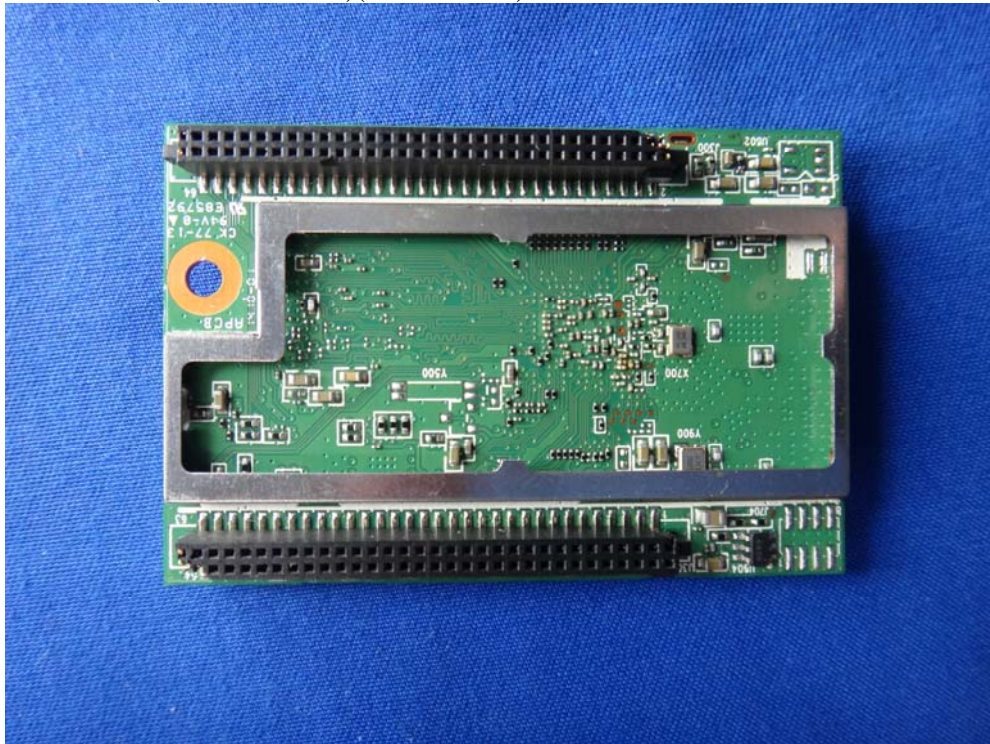


Antenna Connector / IPEX

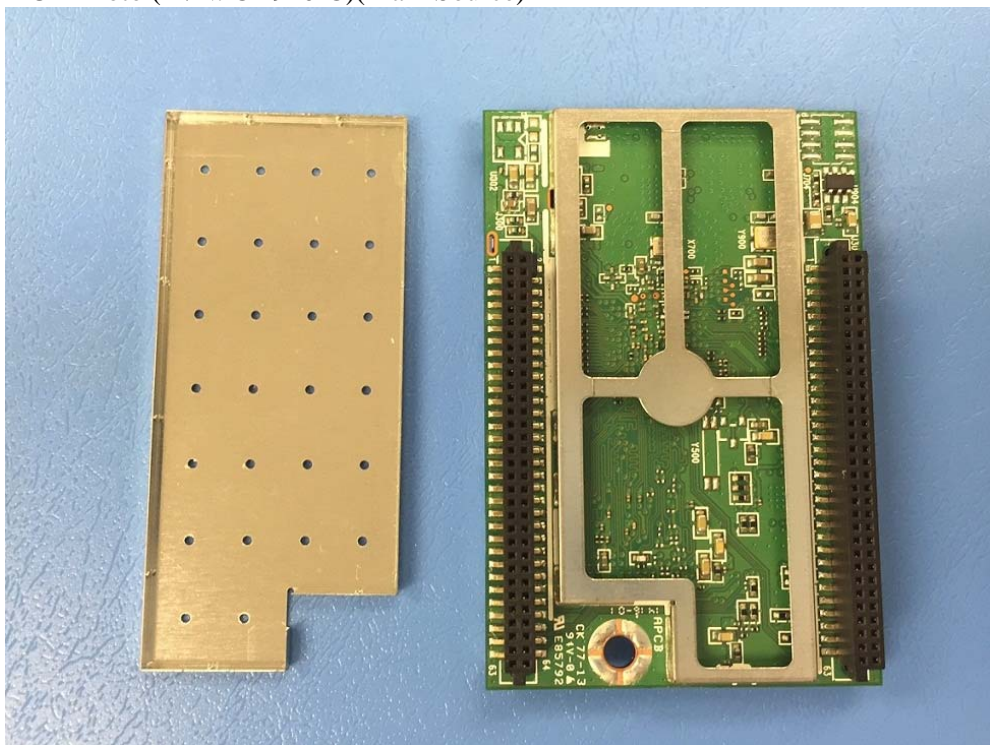
(12) EUT Photo (M/N: CY920-C)(Main Source)



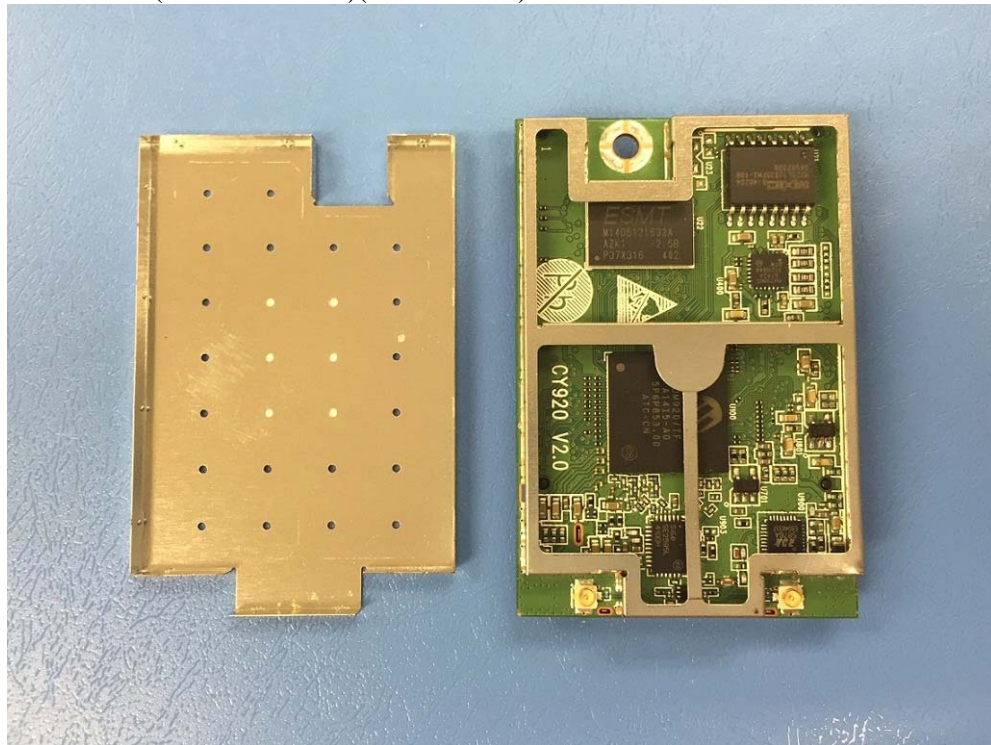
(13) EUT Photo (M/N: CY920-C)(Main Source)



(14) EUT Photo (M/N: CY920-C)(Main Source)



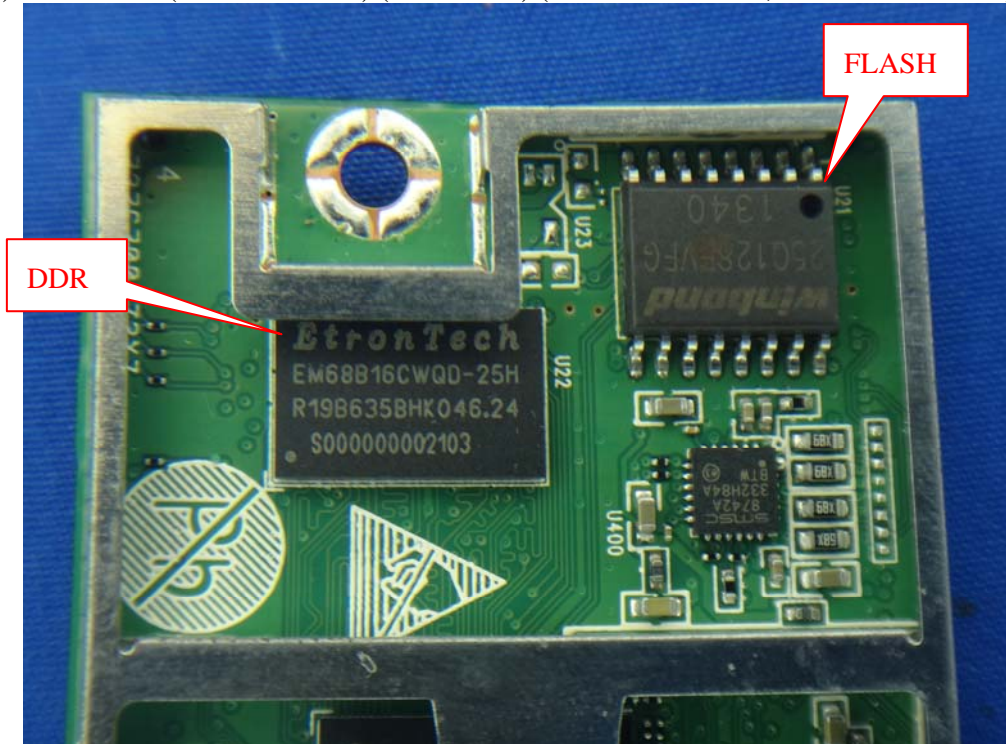
(15) EUT Photo (M/N: CY920-C)(Main Source)



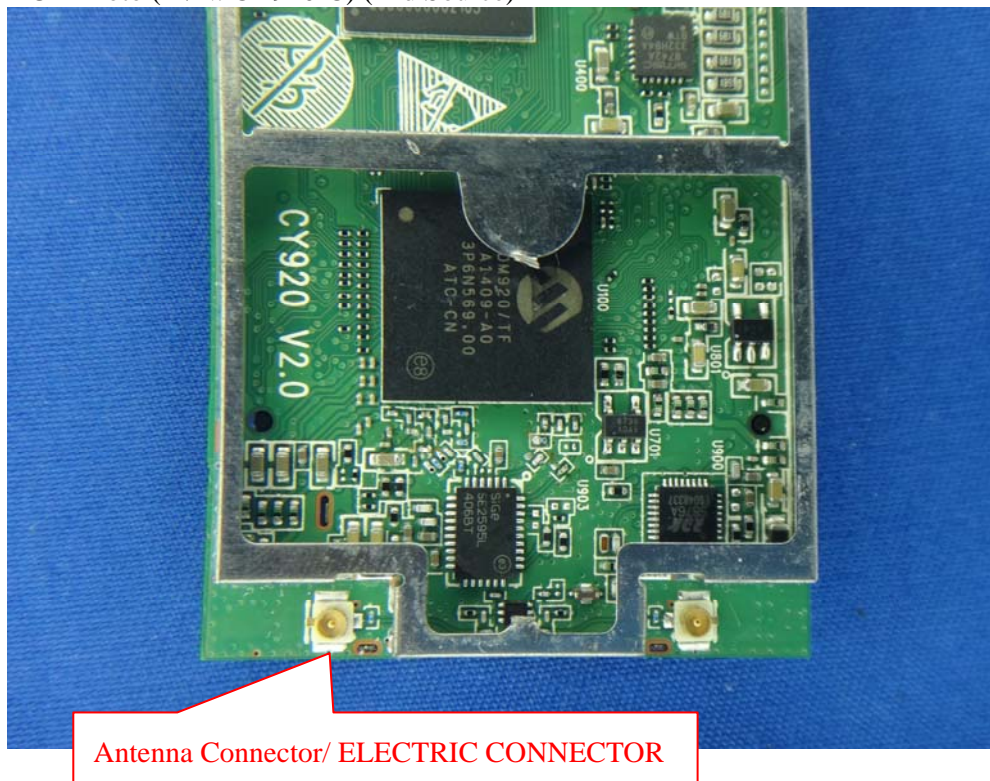
(16) EUT Photo (M/N: CY920-C) (2nd Source)



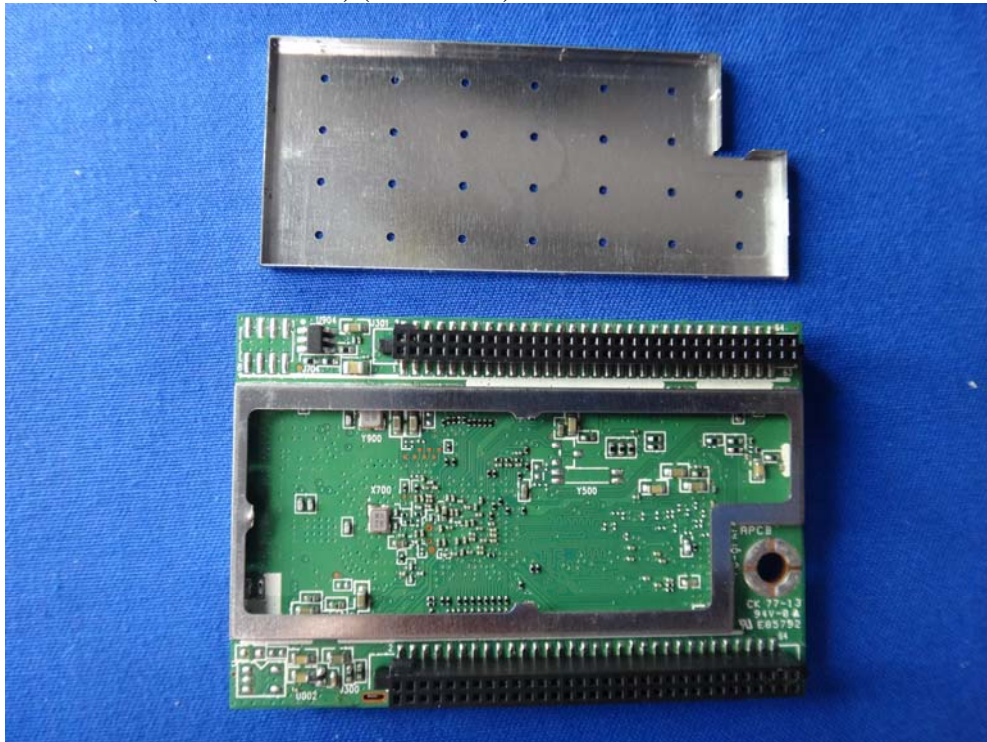
(17) EUT Photo (M/N: CY920-C) (2nd Source) (DDR / EtronTech ; FLASH / Winbond)



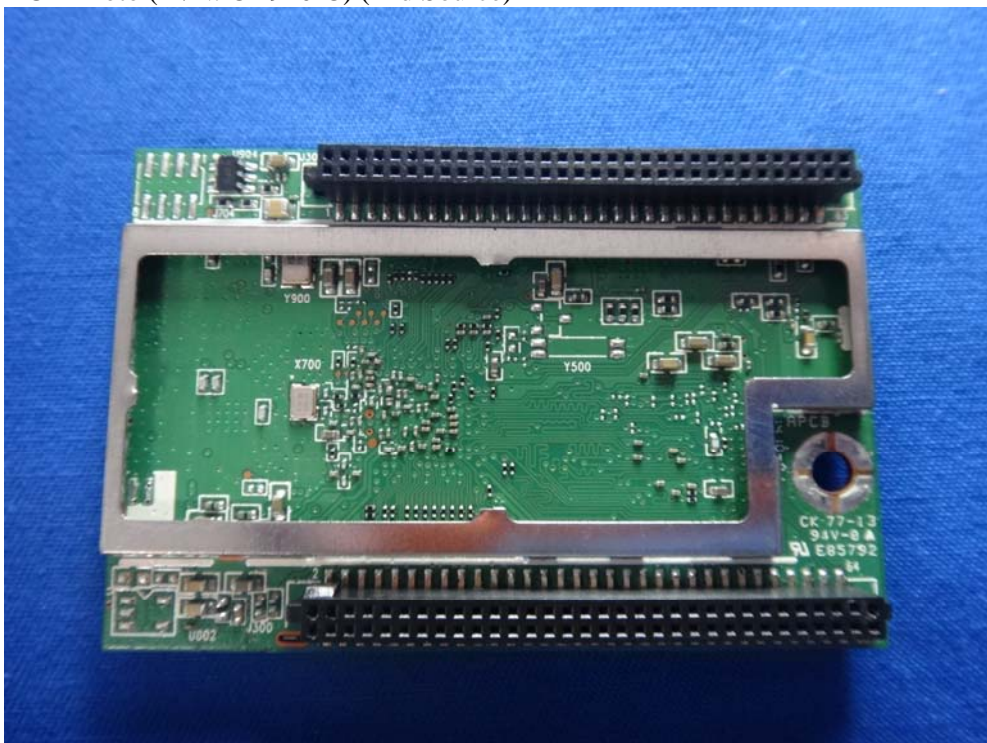
(18) EUT Photo (M/N: CY920-C) (2nd Source)



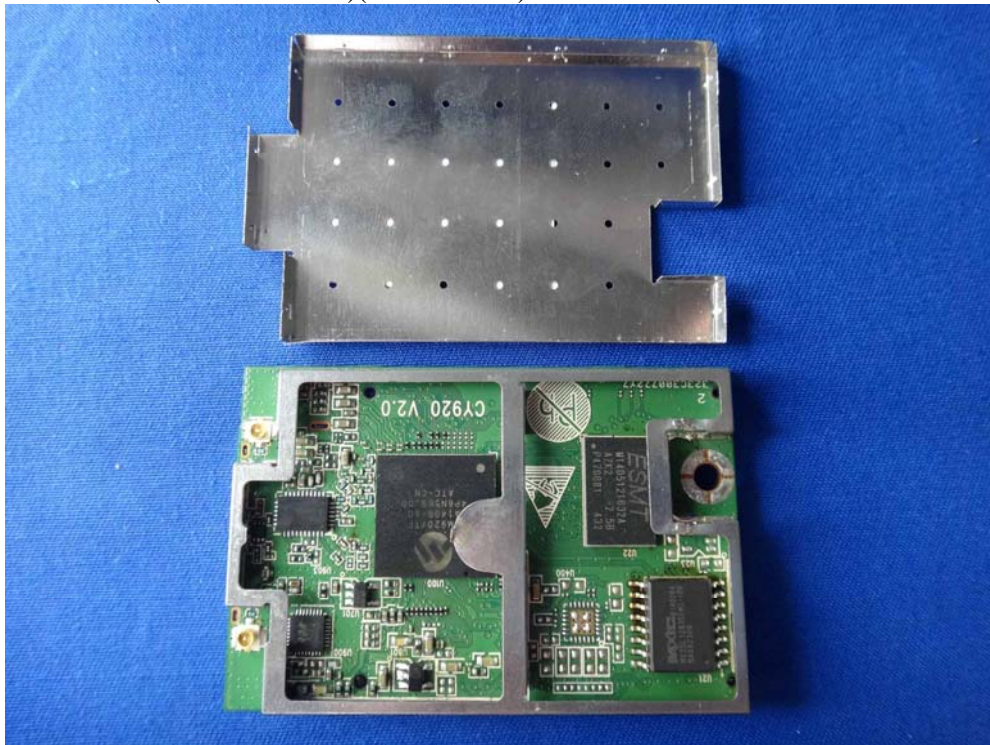
(19) EUT Photo (M/N: CY920-C) (2nd Source)



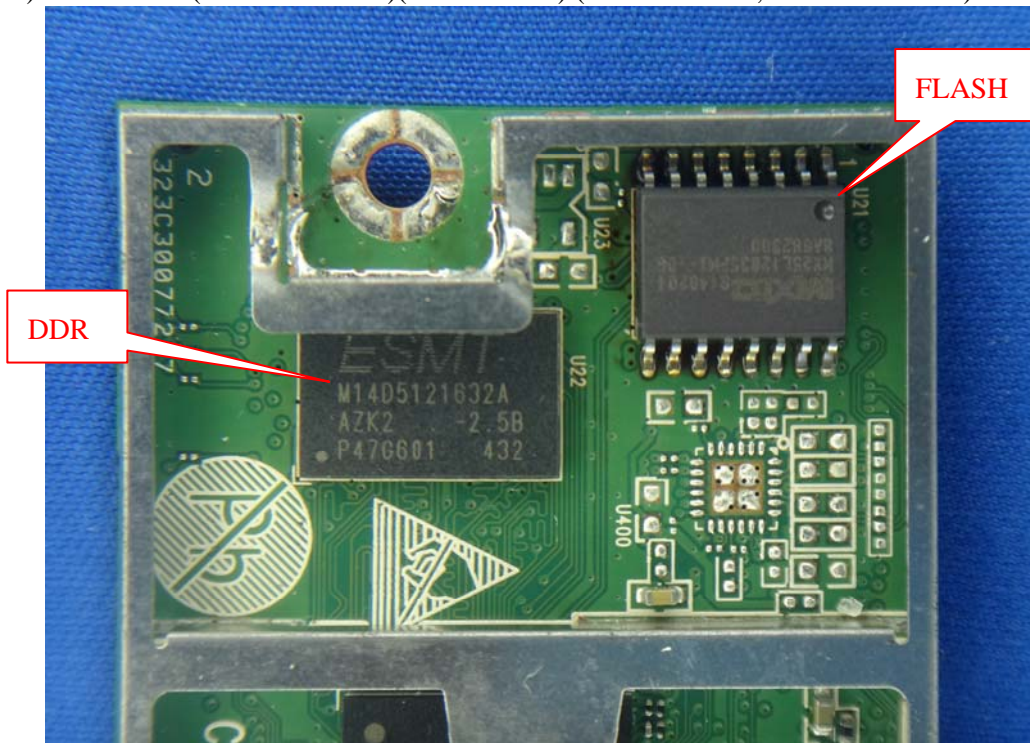
(20) EUT Photo (M/N: CY920-C) (2nd Source)



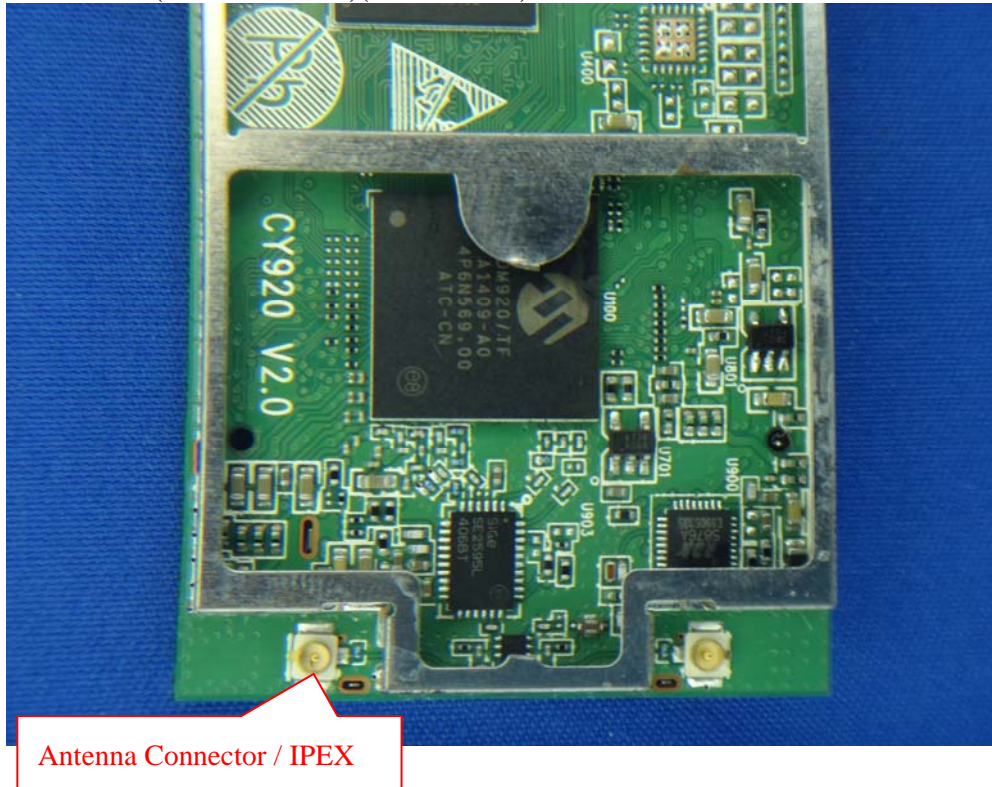
(21) EUT Photo (M/N: CY920-A)(Main Source)



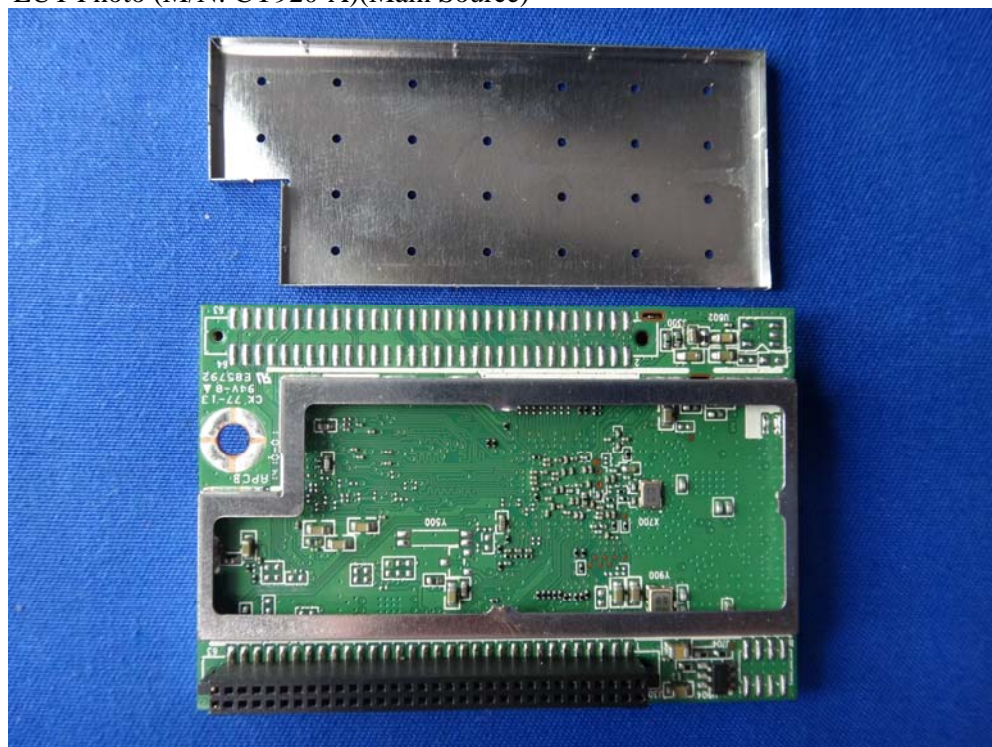
(22) EUT Photo (M/N: CY920-A)(Main Source) (DDR / ESMT ; FLASH / MXIC)



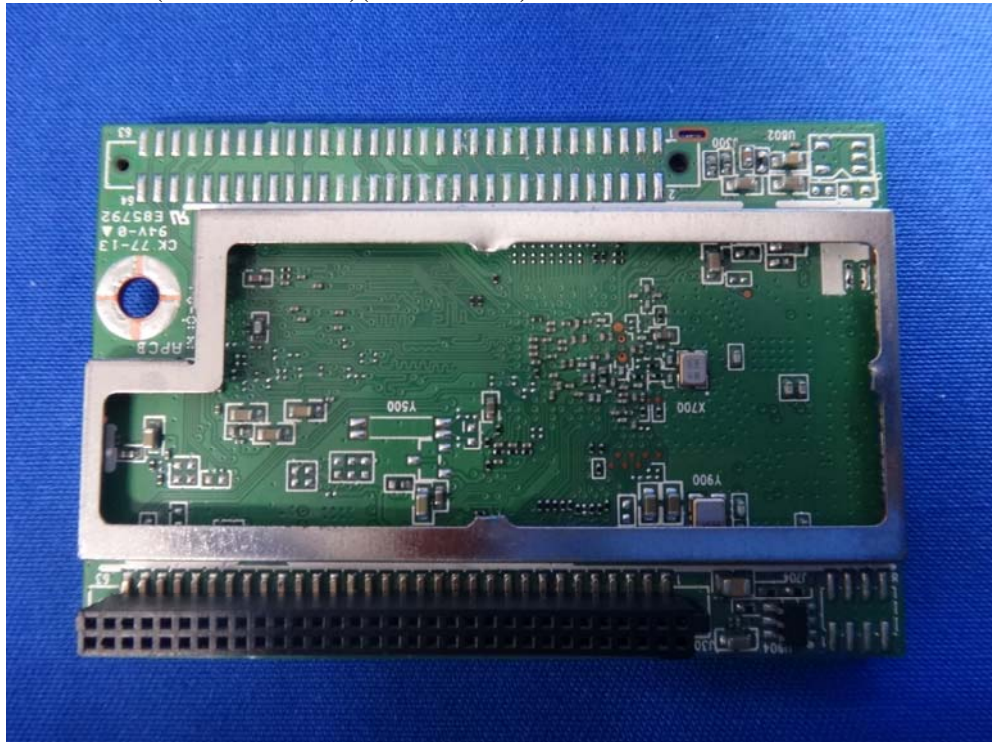
(23) EUT Photo (M/N: CY920-A)(Main Source)



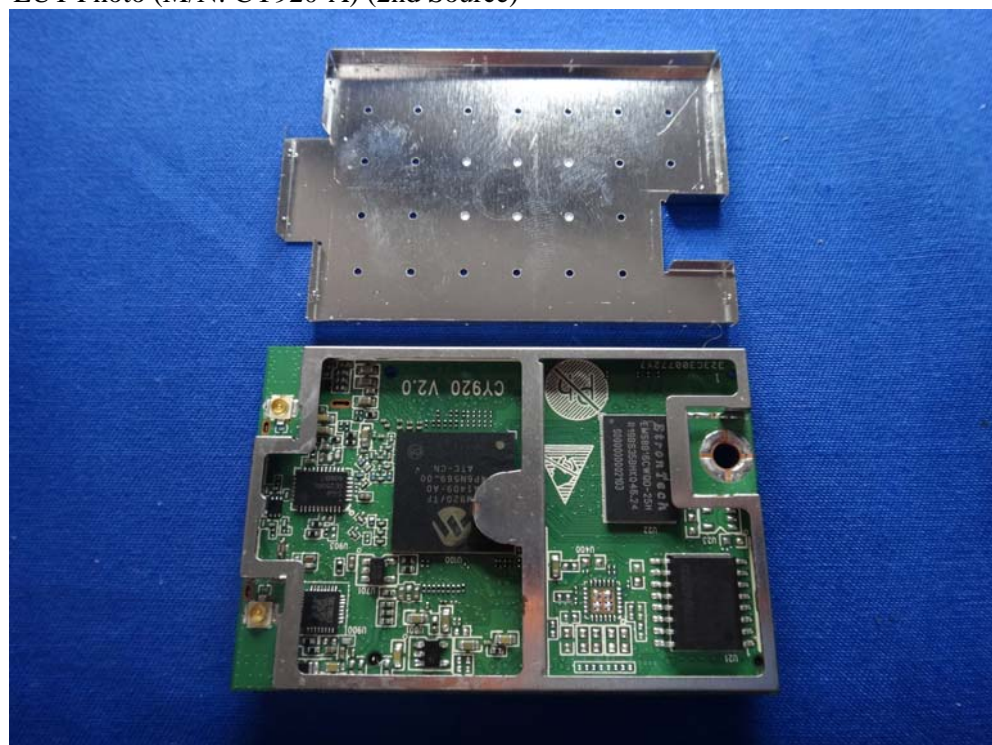
(24) EUT Photo (M/N: CY920-A)(Main Source)



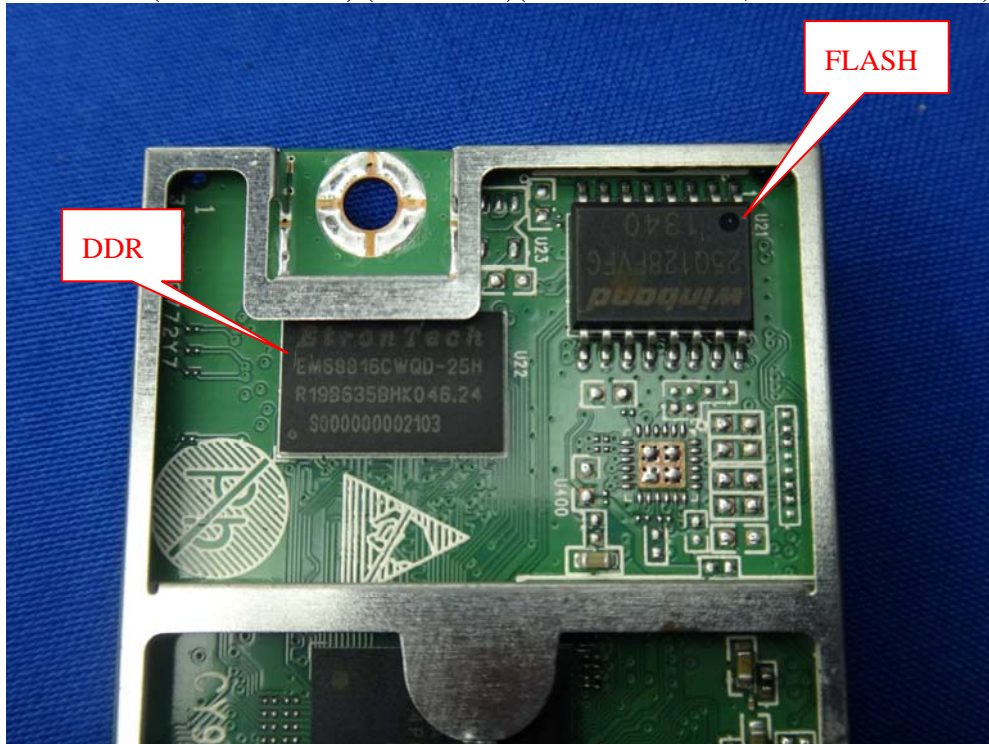
(25) EUT Photo (M/N: CY920-A)(Main Source)



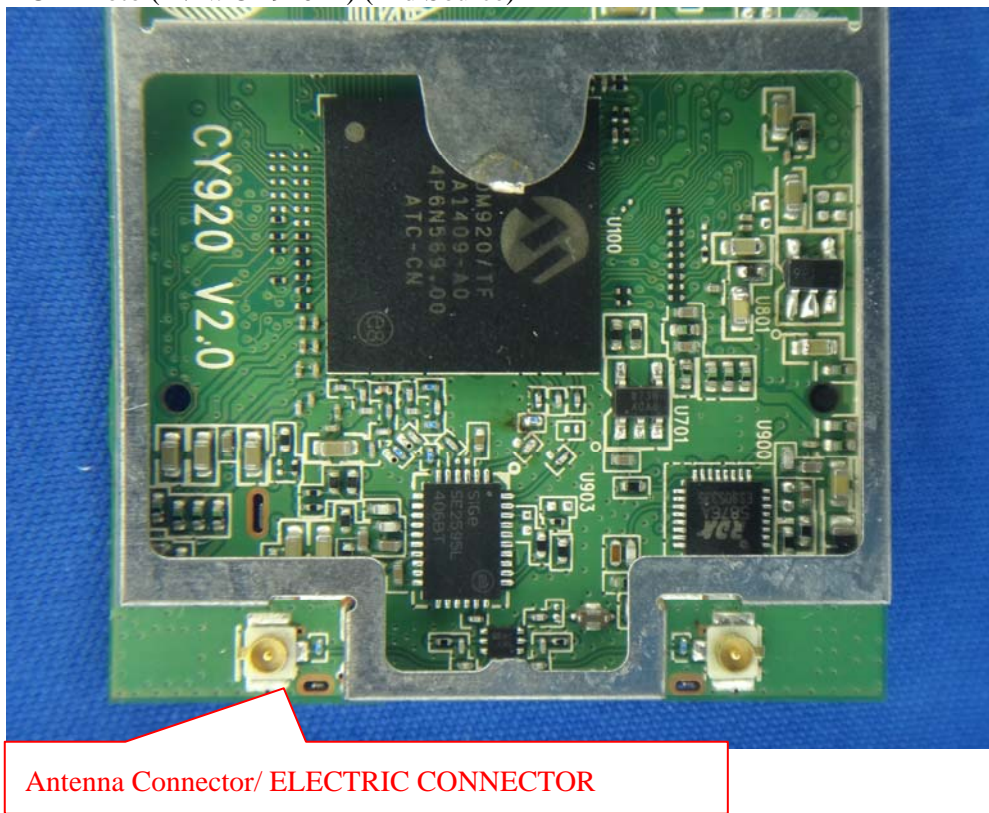
(26) EUT Photo (M/N: CY920-A) (2nd Source)



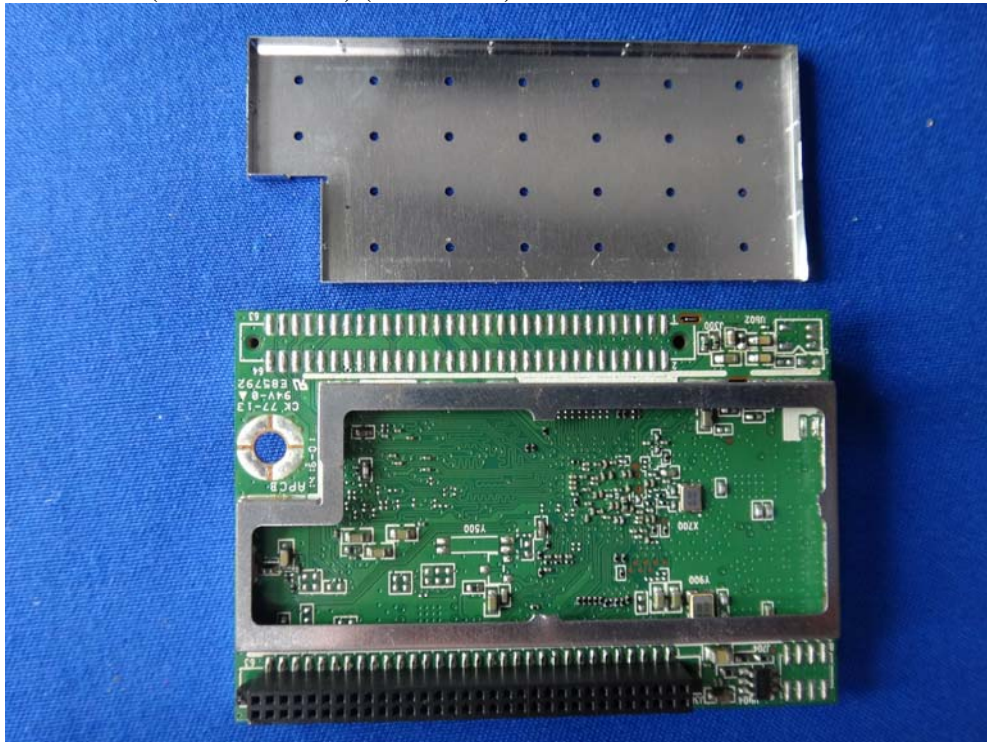
(27) EUT Photo (M/N: CY920-A) (2nd Source)(DDR / EtronTech ; FLASH / Winbond)



(28) EUT Photo (M/N: CY920-A) (2nd Source)



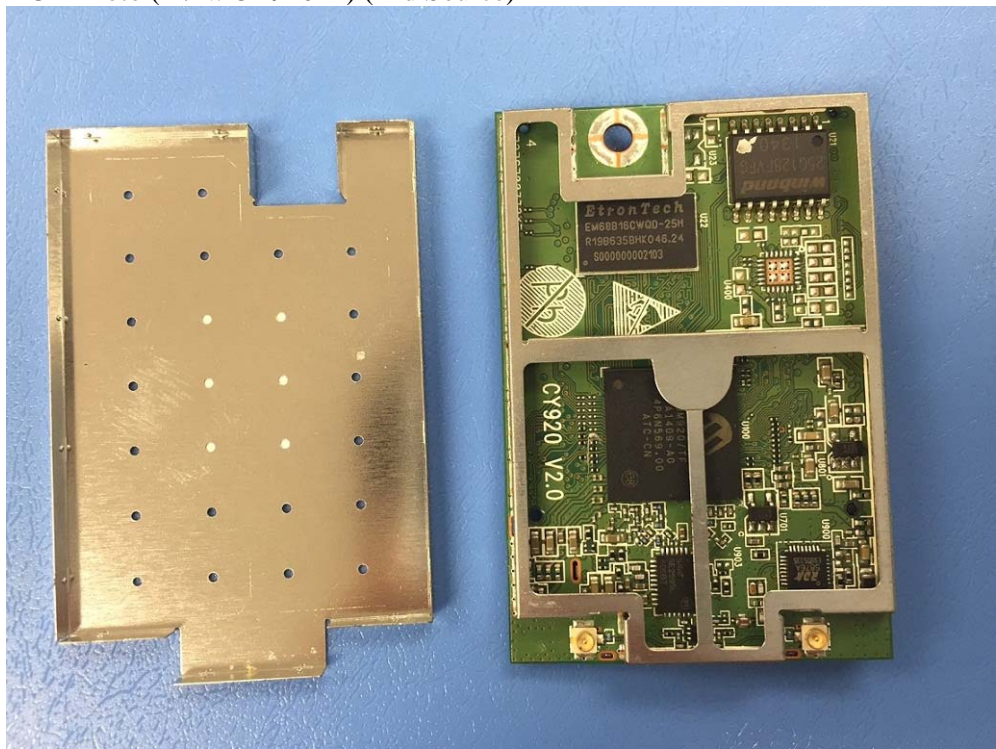
(29) EUT Photo (M/N: CY920-A) (2nd Source)



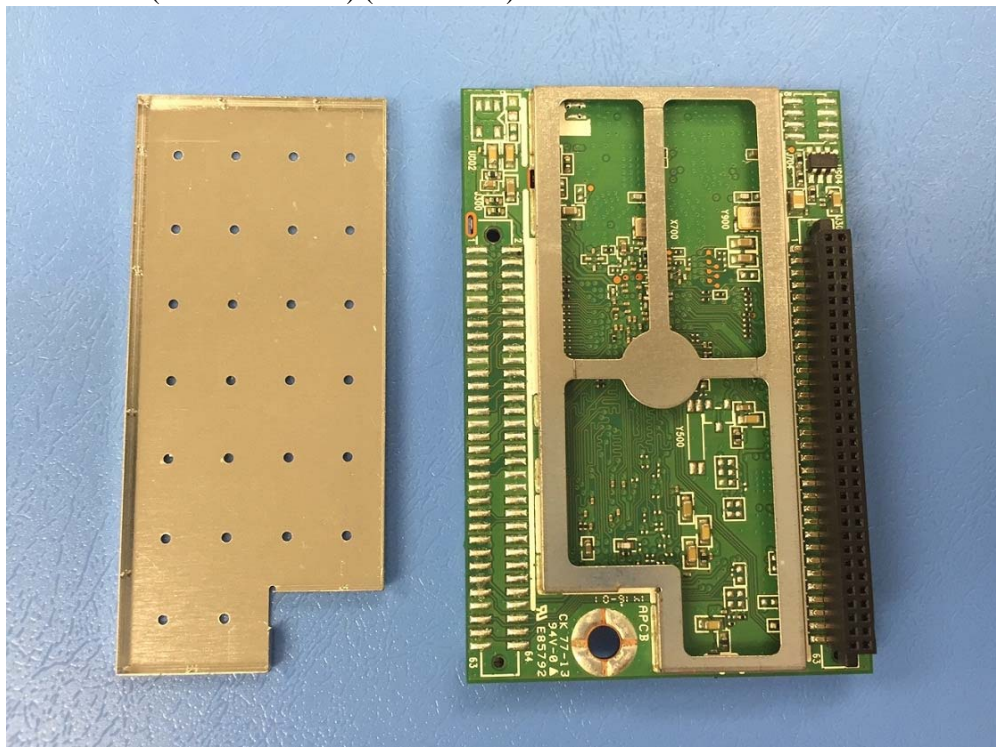
(30) EUT Photo (M/N: CY920-A) (2nd Source)



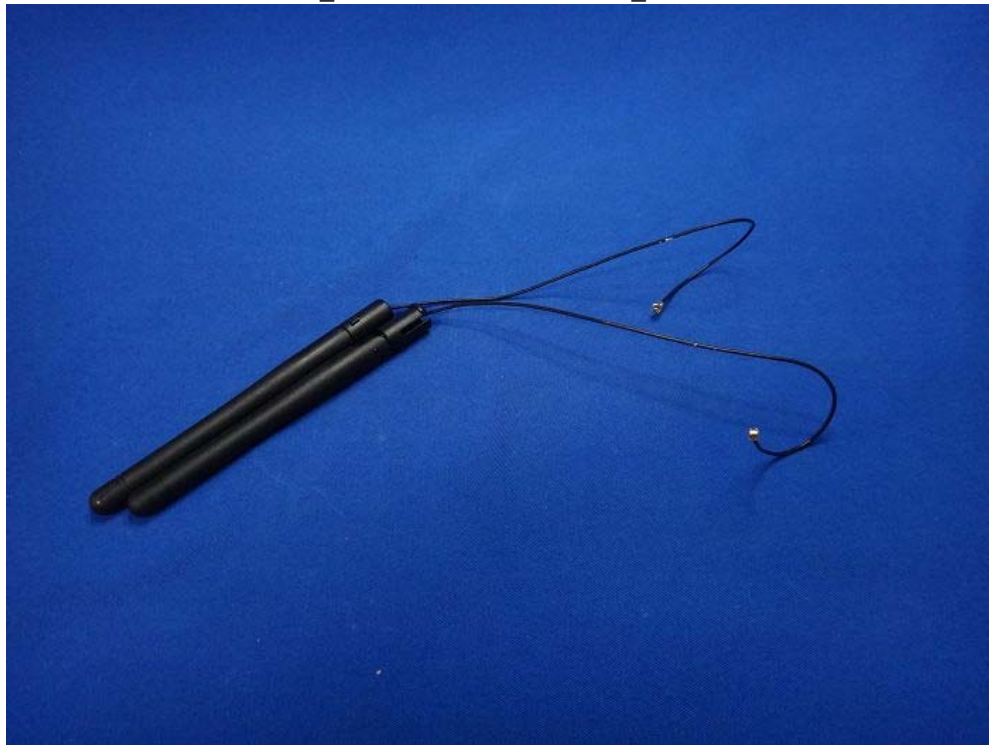
(31) EUT Photo (M/N: CY920-A) (2nd Source)



(32) EUT Photo (M/N: CY920-A) (2nd Source)



(33) EUT Photo -WALSIN / PI_RFDPA870920IMLB301_V01 Without Core



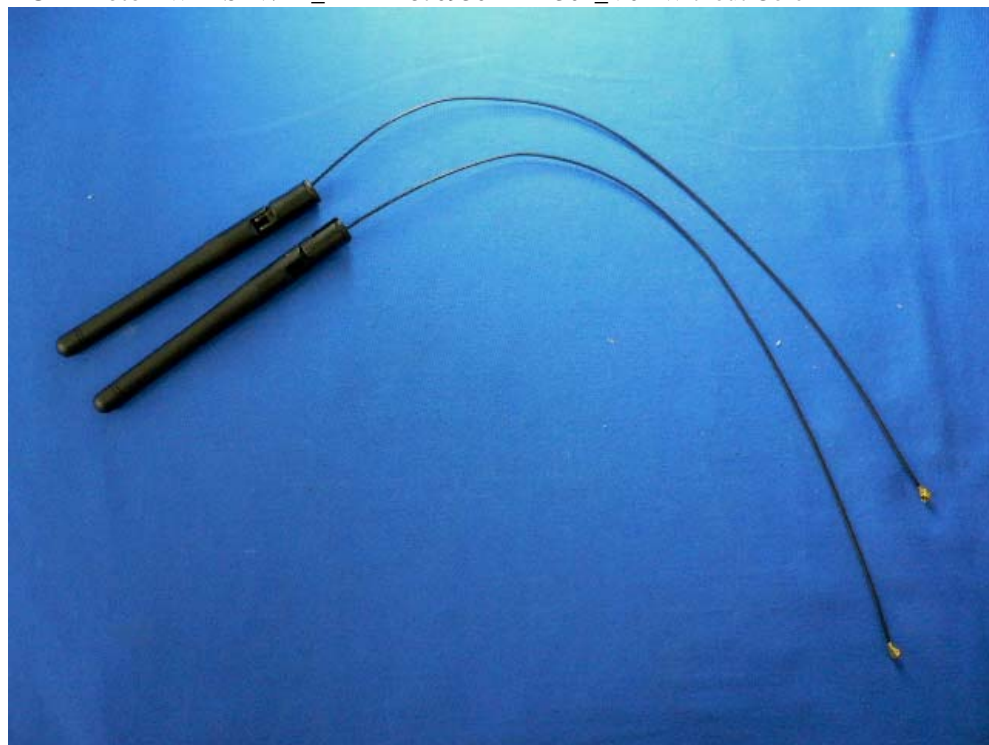
(34) EUT Photo - WALSIN / RFDPA870920IMLB304 (ferrite core \varnothing 8.0*4mm)



(35) EUT Photo - WAL SIN / RFDPA870920IMLB305 (ferrite core φ 4.0*10)



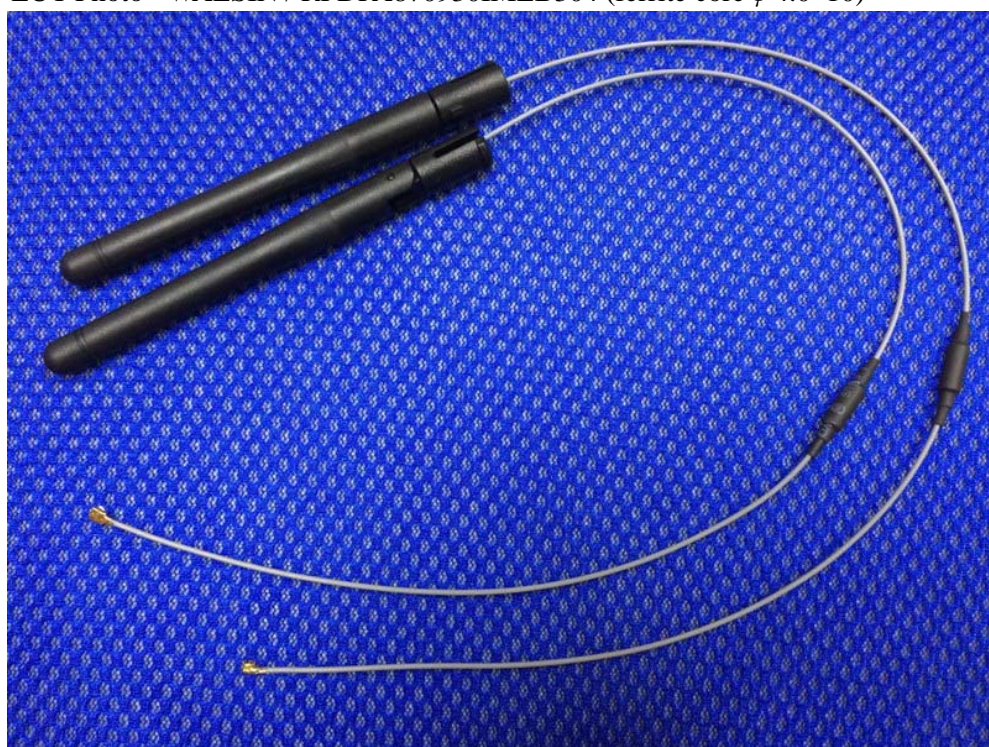
(36) EUT Photo - WAL SIN / PI_RFDPA870930IMLB301_V01 Without Core



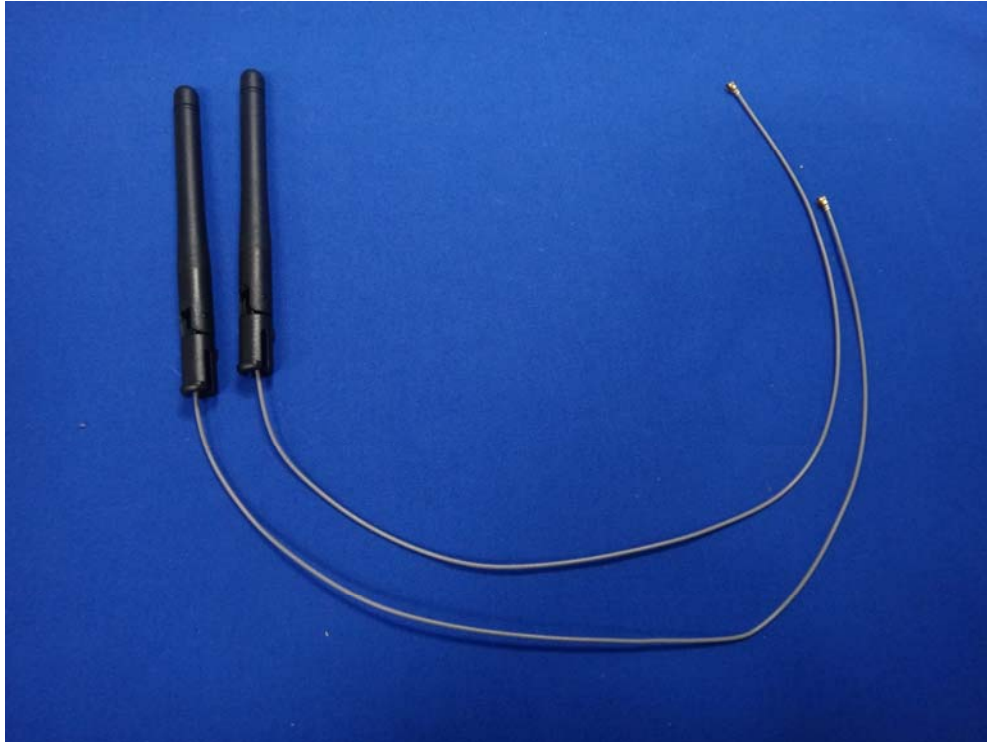
(37) EUT Photo - WALSIN / RFDPA870930IMLB303 (ferrite core φ 8.0*4mm)



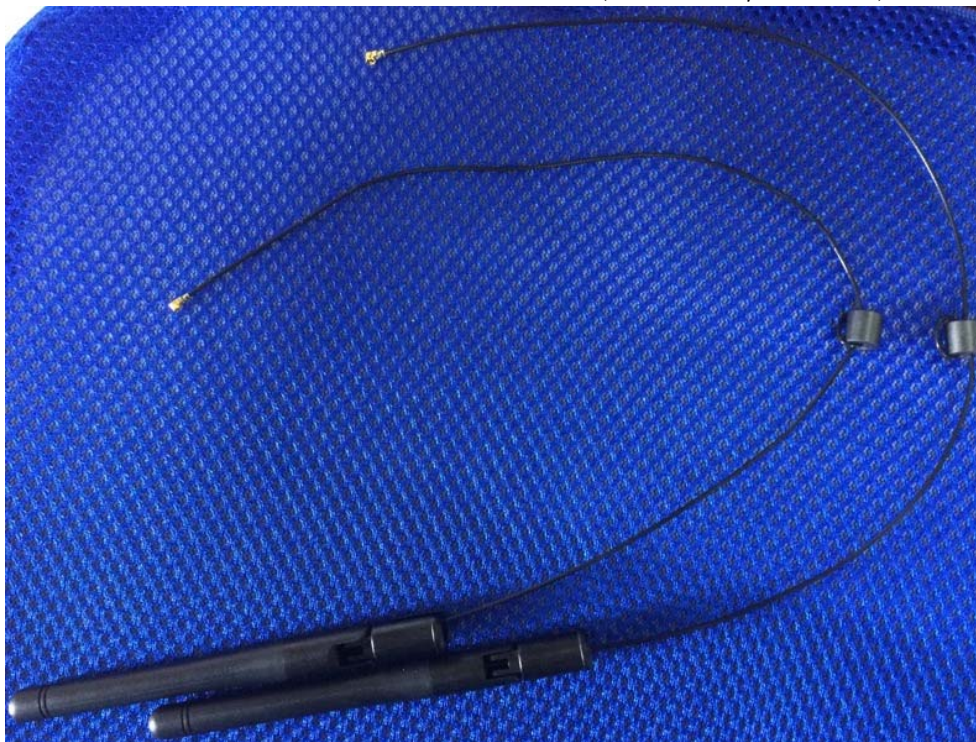
(38) EUT Photo - WALSIN / RFDPA870930IMLB304 (ferrite core φ 4.0*10)



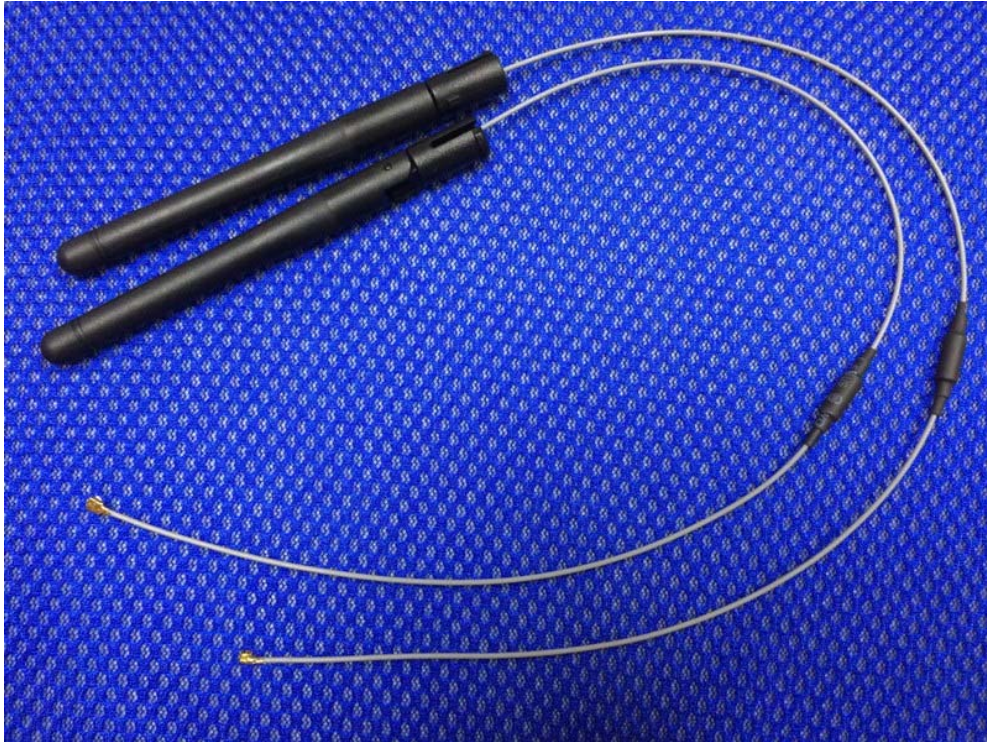
(39) EUT Photo - WALSIN / RFDPA870933IMLB301 Without Core



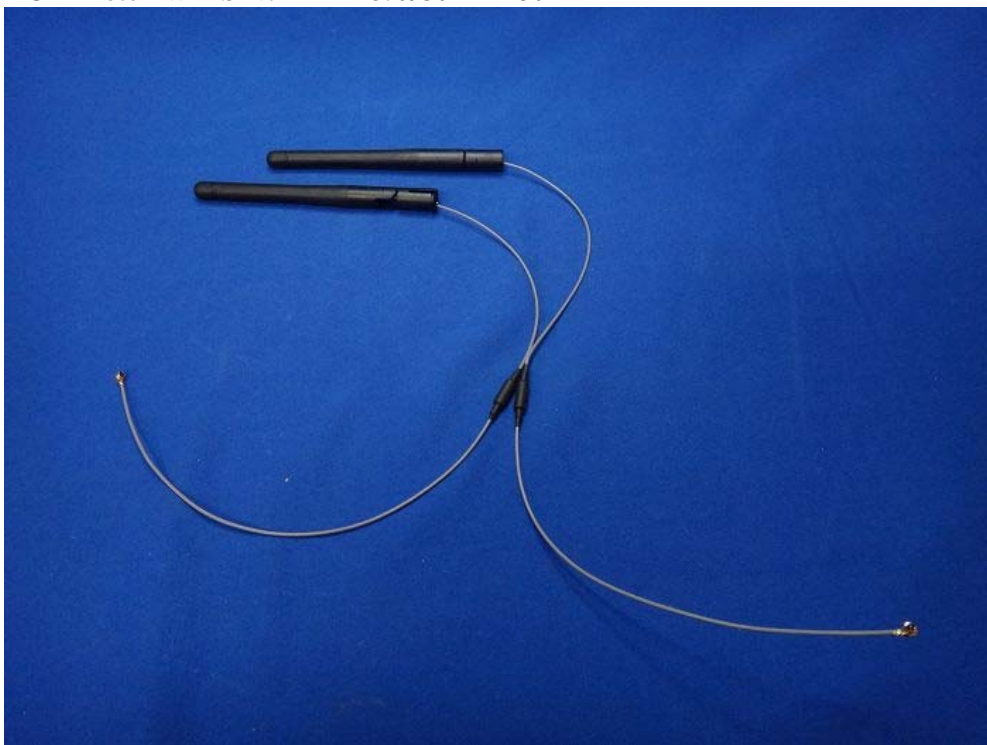
(40) EUT Photo - WALSIN / RFDPA870933IMLB302 (ferrite core φ 8.0*4mm)



(41) EUT Photo - WALSIN / RFDPA870933IMLB303 (ferrite core φ 4.0*10)



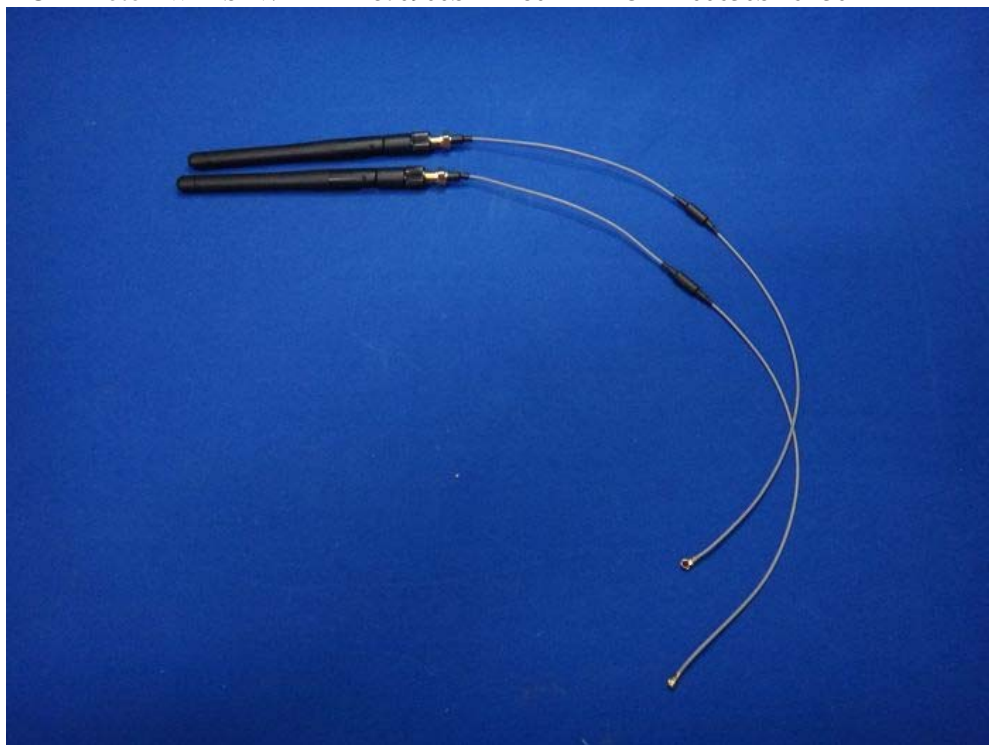
(42) EUT Photo - WALSIN / RFDPA870930IMAB301



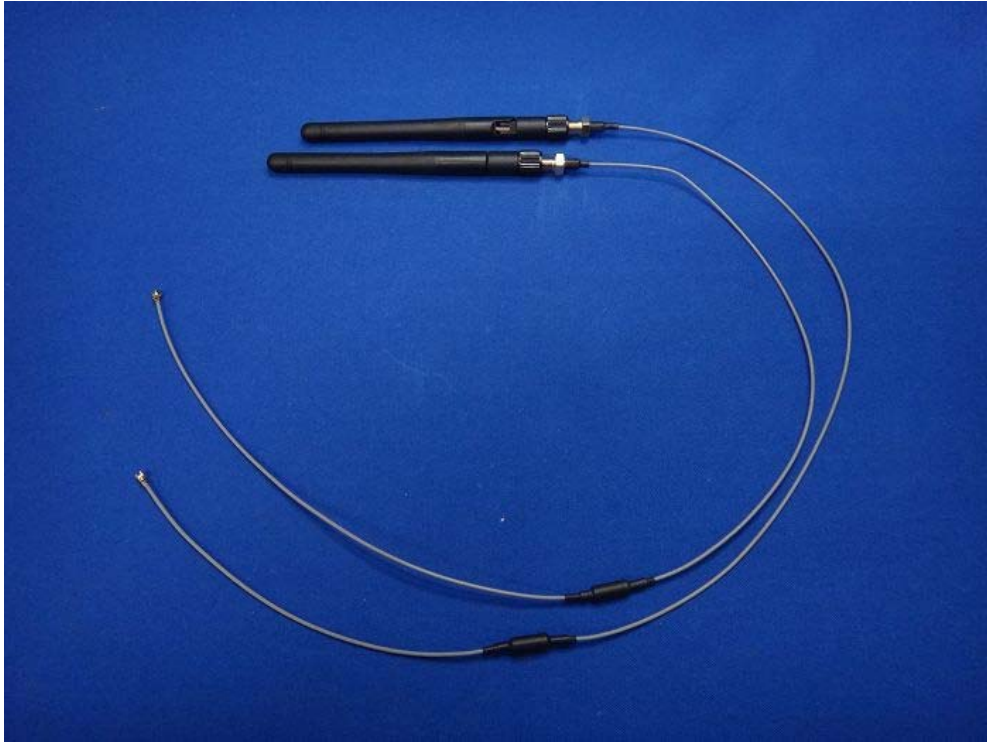
(43) EUT Photo - WALSIN / RFDPA870945IMAB301



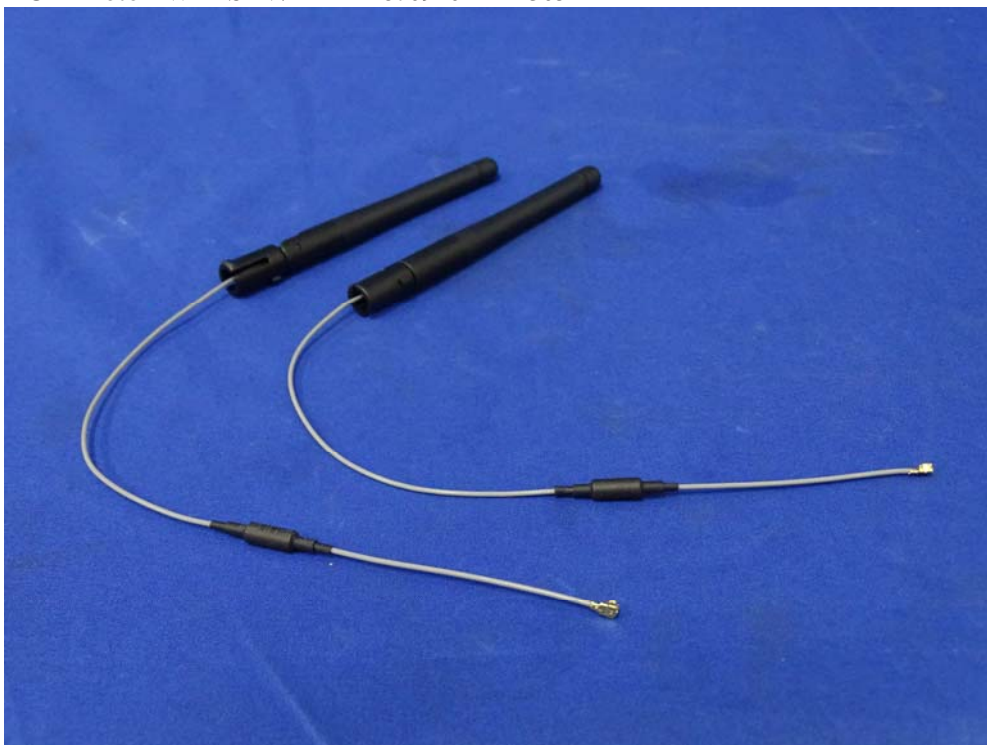
(44) EUT Photo - WALSIN / RFDPA870900SBAB801 + RFCBA100630SA6B301



(45) EUT Photo - WALSIN / RFDPA870900SBAB801 + RFCBA100645SA6B301



(46) EUT Photo - WALSIN / RFDPA870920IMLB305



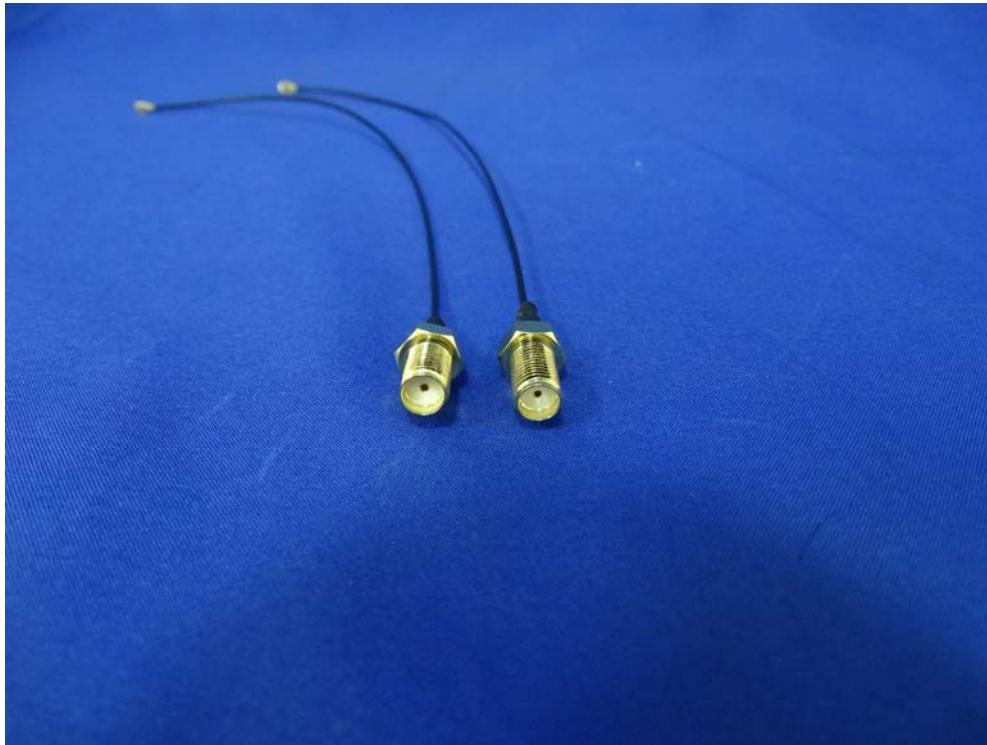
(47) EUT Photo - WALSIN / RFDPA870920IMLB305



(48) EUT Photo - WALSIN / RFCBA100620SF6B301



(49) EUT Photo - WALSIN / RFCBA100620SF6B301



(50) EUT Photo - WALSIN / RFDPA870900SMLB801



(51) EUT Photo - WALSIN / RFCBA100620SF6B305



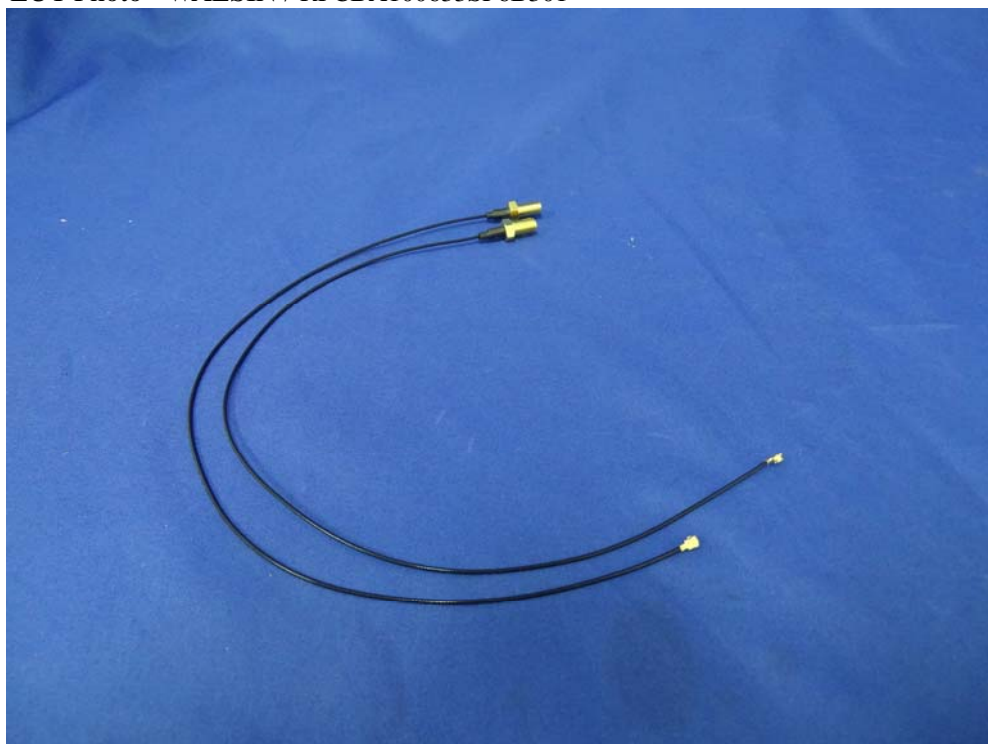
(52) EUT Photo - WALSIN / RFCBA100620SF6B305



(53) EUT Photo - WALSIN / RFDPA870900SMLB801



(54) EUT Photo - WALSIN / RFCBA100633SF6B301



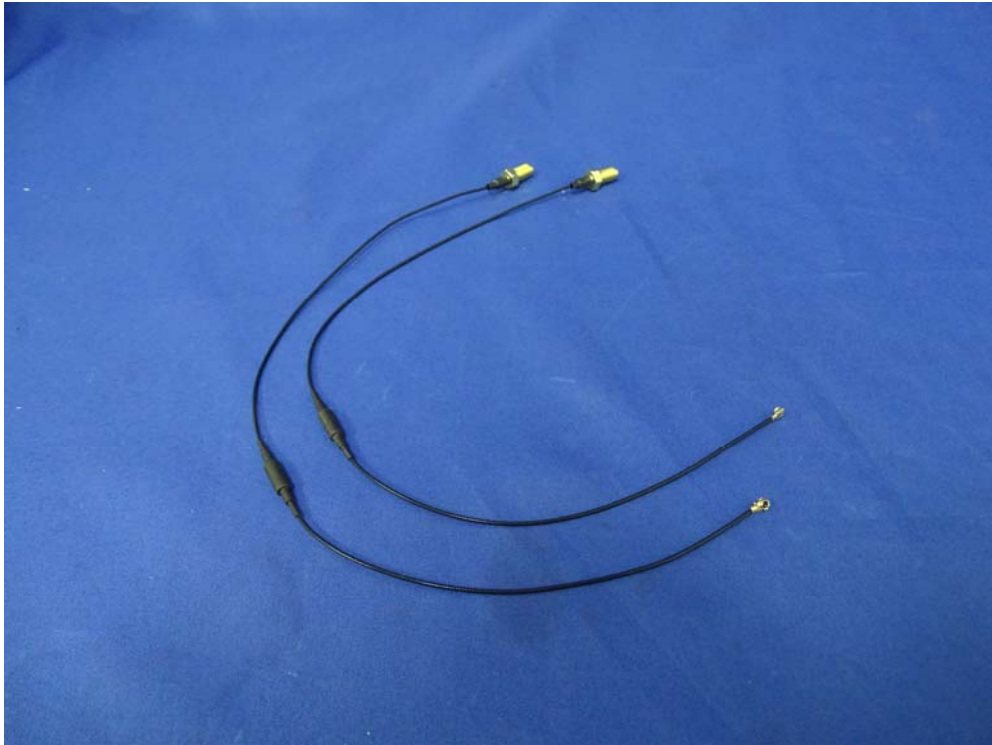
(55) EUT Photo - WALSIN / RFCBA100633SF6B301



(56) EUT Photo - WALSIN / RFDPA870900SMLB801



(57) EUT Photo - WALSIN / RFCBA100633SF6B302



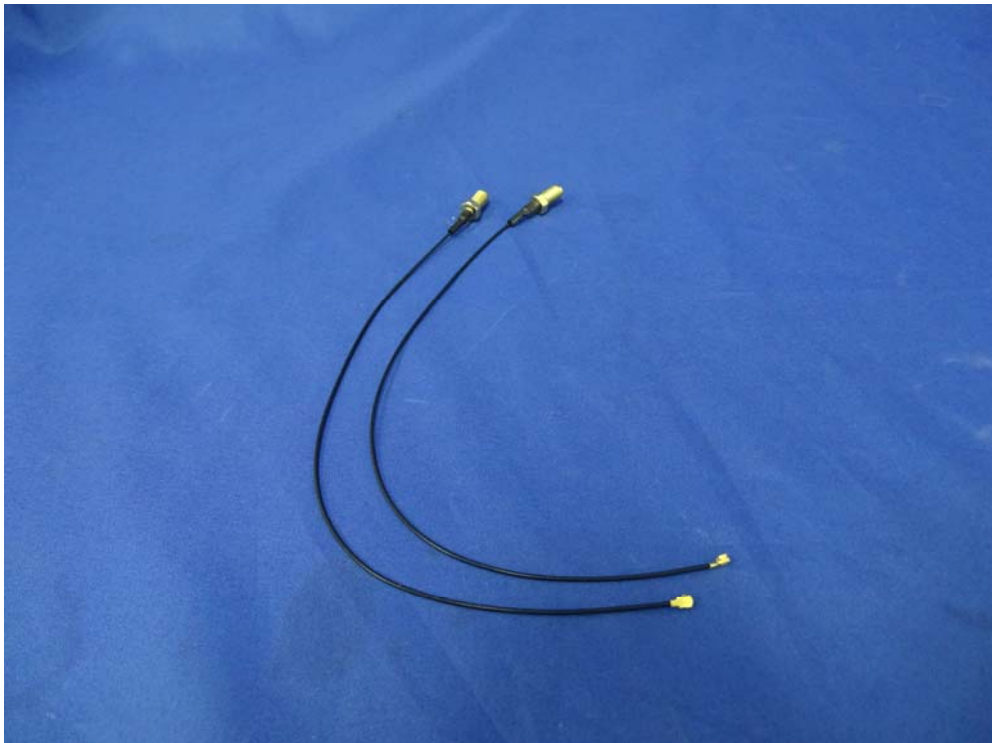
(58) EUT Photo - WALSIN / RFCBA100633SF6B302



(59) EUT Photo - WALSIN / RFDPA870900SMLB801



(60) EUT Photo - WALSIN / RFCBA100625SF6B301



(61) EUT Photo - WALSIN / RFCBA100625SF6B301



(62) EUT Photo - WALSIN / RFDPA870900SMLB801



(63) EUT Photo - WALSIN / RFCBA100625SF6B302



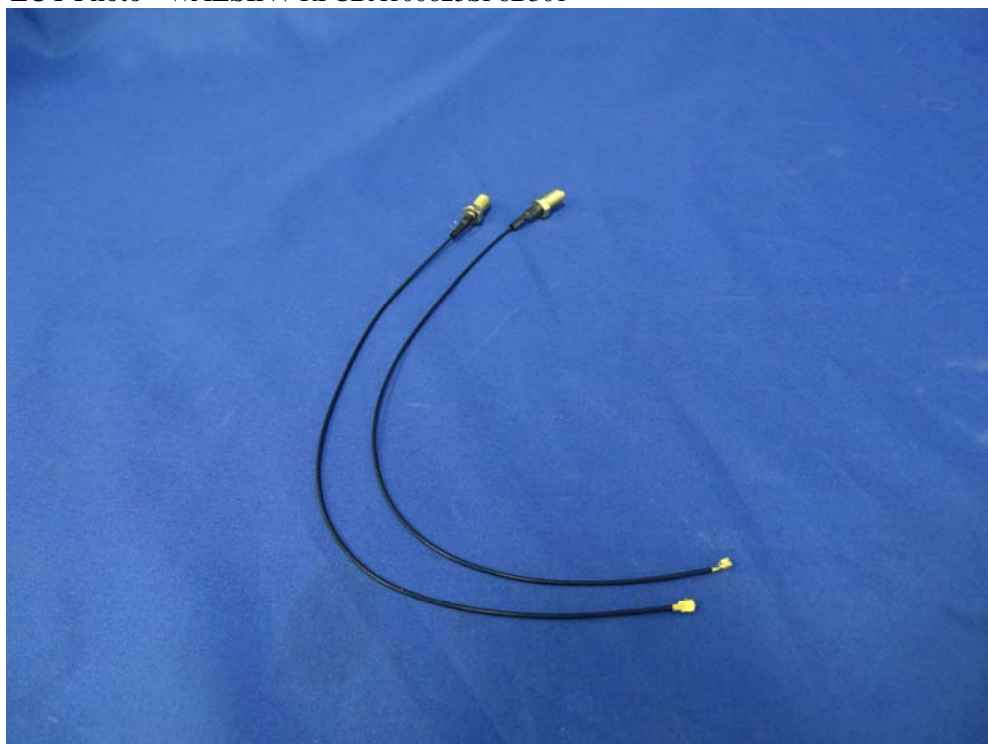
(64) EUT Photo - WALSIN / RFCBA100625SF6B302



(65) EUT Photo - WALSIN / RFDPA870900SMLB801



(66) EUT Photo - WALSIN / RFCBA100625SF6B301



(67) EUT Photo - WALSIN / RFCBA100625SF6B301



(68) EUT Photo - WALSIN / RFDPA870900SMLB803



(69) EUT Photo - WALSIN / RFCBA100625SF6B302



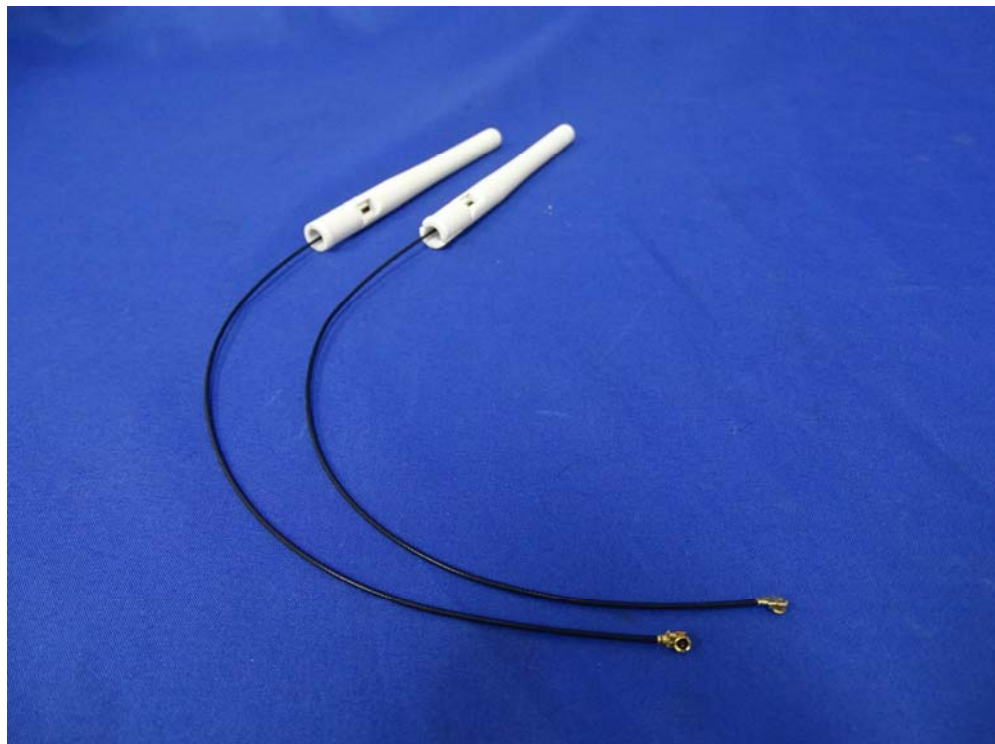
(70) EUT Photo - WALSIN / RFCBA100625SF6B302



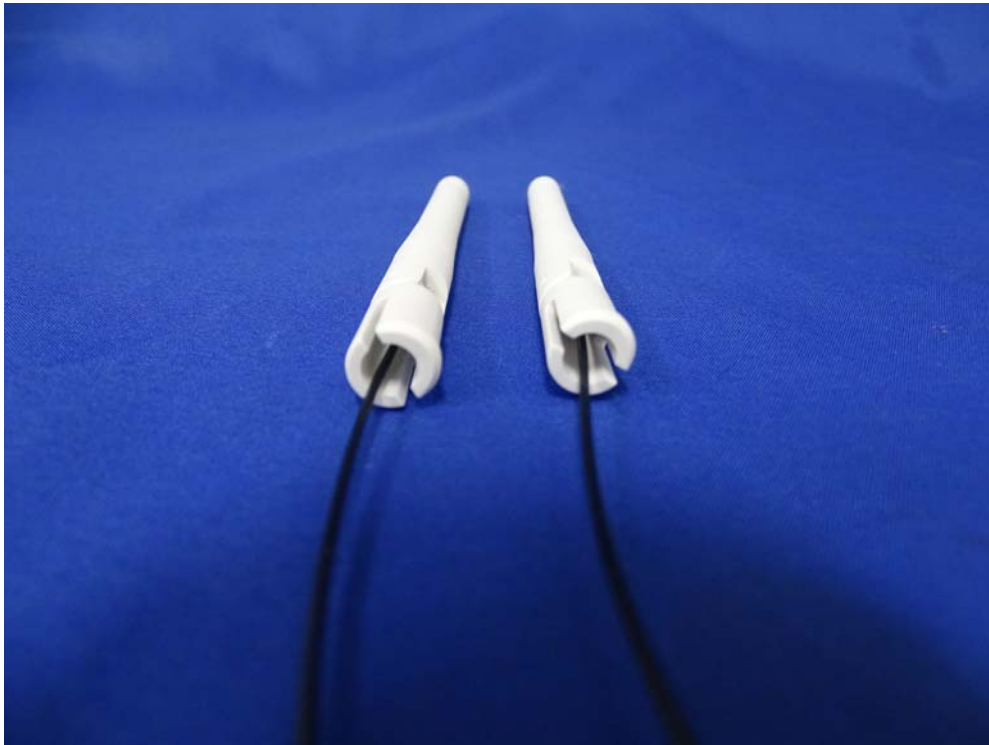
(71) EUT Photo - WALSIN / RFDPA870900SMLB803



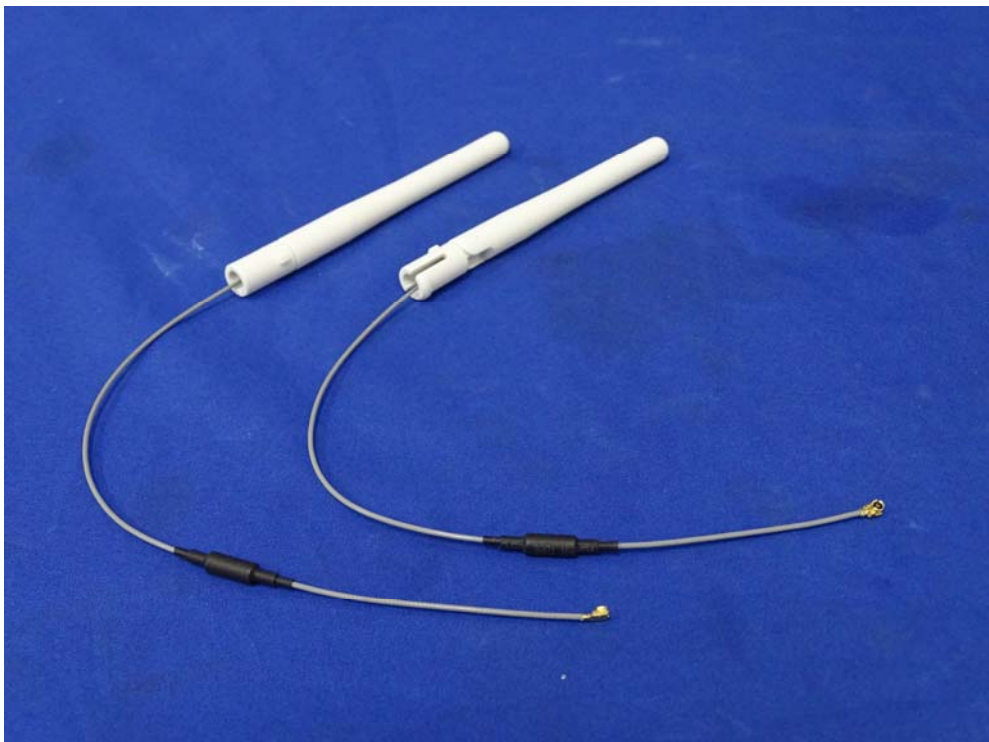
(72) EUT Photo - WALSIN / RFDPA870920IMLB307



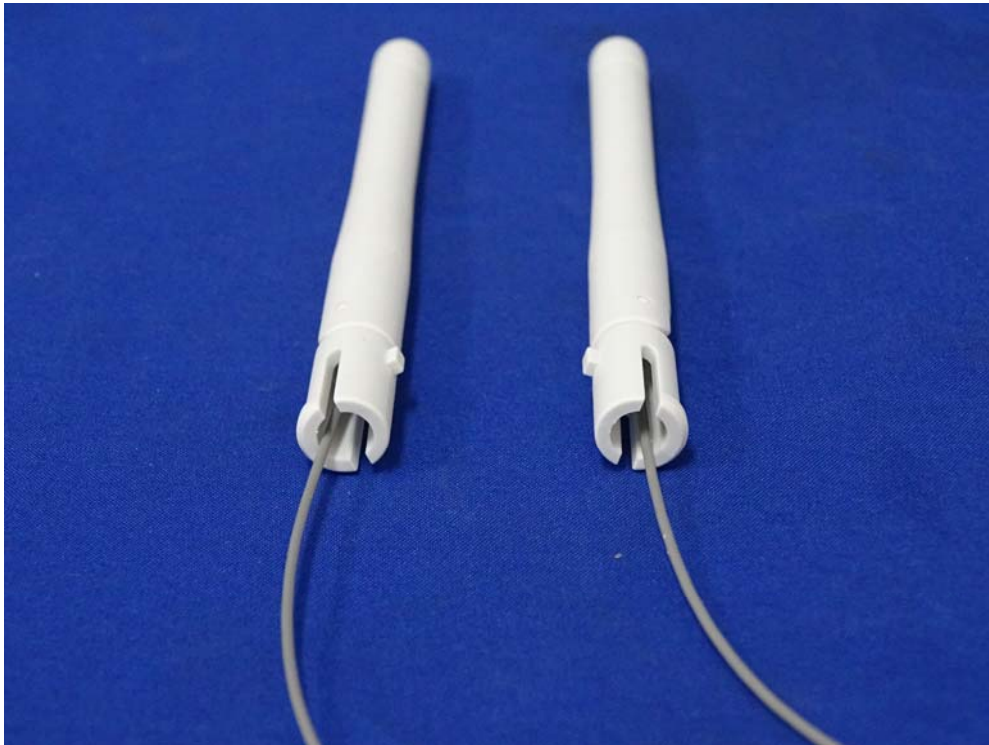
(73) EUT Photo - WAL SIN / RFDPA870920IMLB307



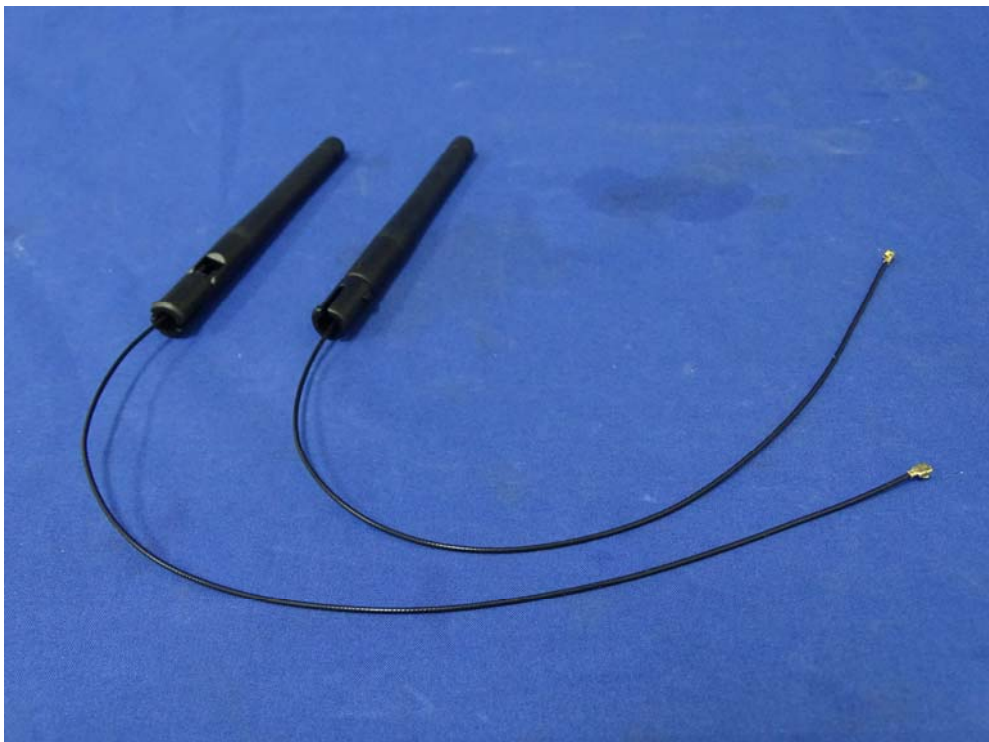
(74) EUT Photo - WAL SIN / RFDPA870920IMLB306



(75) EUT Photo - WALSIN / RFDPA870920IMLB306



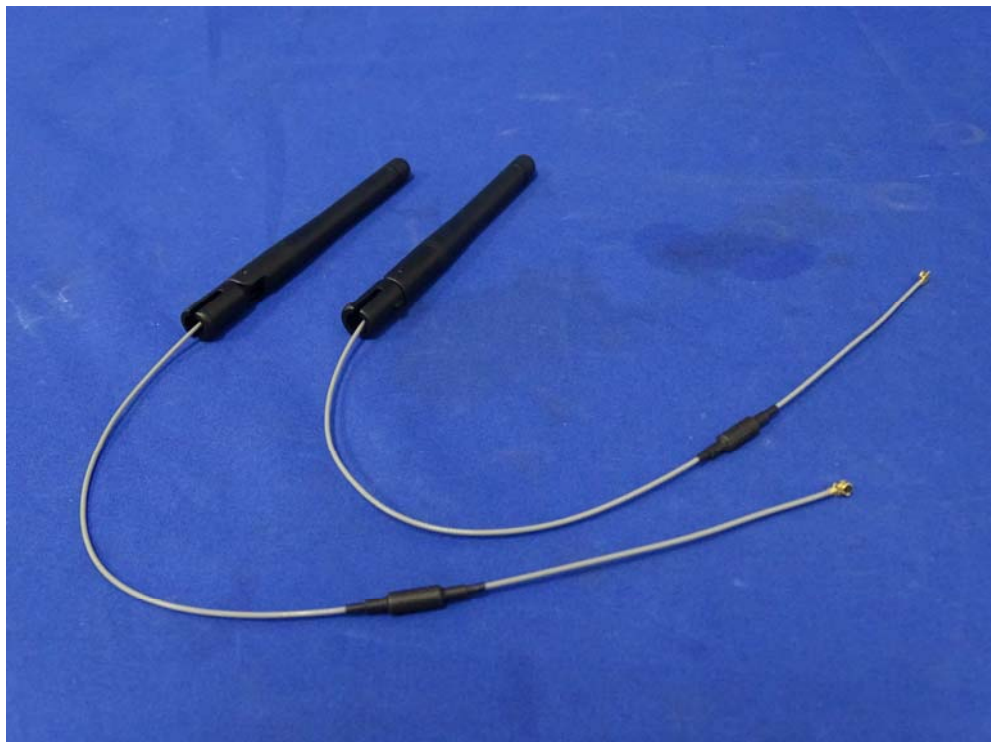
(76) EUT Photo - WALSIN / RFDPA870925IMLB301



(77) EUT Photo - WALSIN / RFDPA870925IMLB301



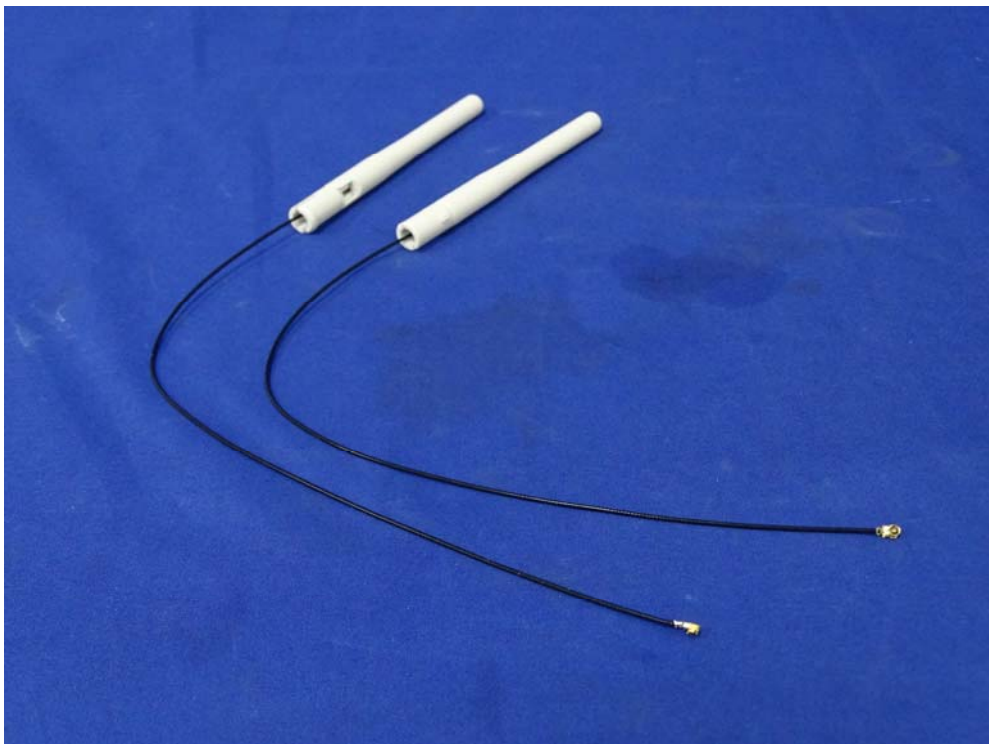
(78) EUT Photo - WALSIN / RFDPA870925IMLB302



(79) EUT Photo - WALSIN / RFDPA870925IMLB302



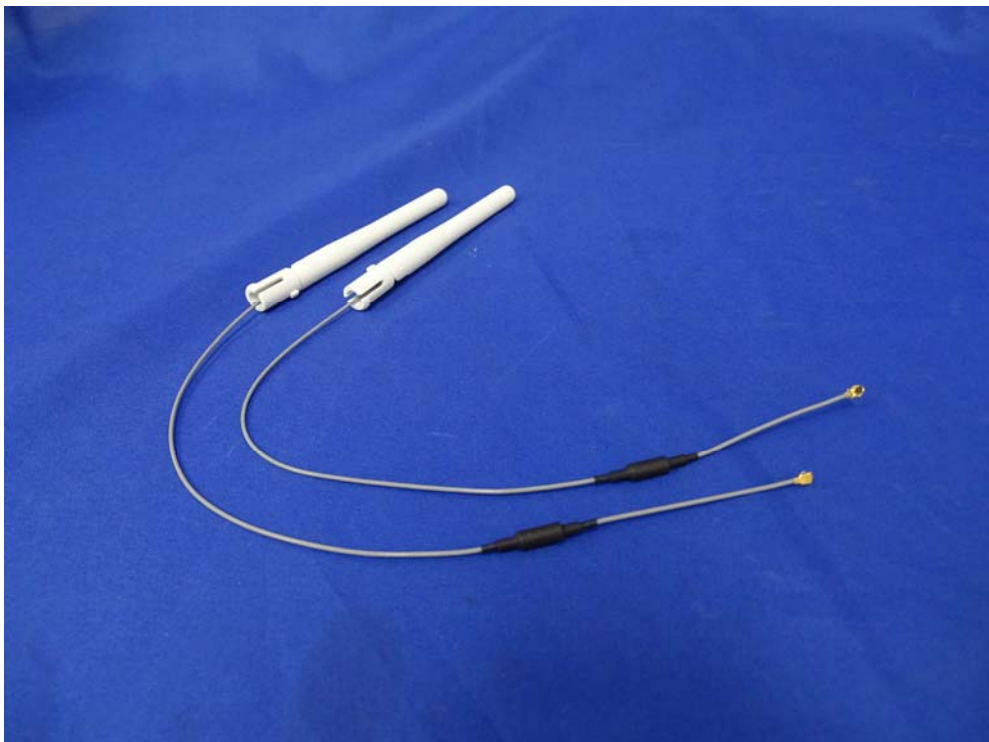
(80) EUT Photo - WALSIN / RFDPA870925IMLB303



(81) EUT Photo - WALSIN / RFDPA870925IMLB303



(82) EUT Photo - WALSIN / RFDPA870925IMLB304

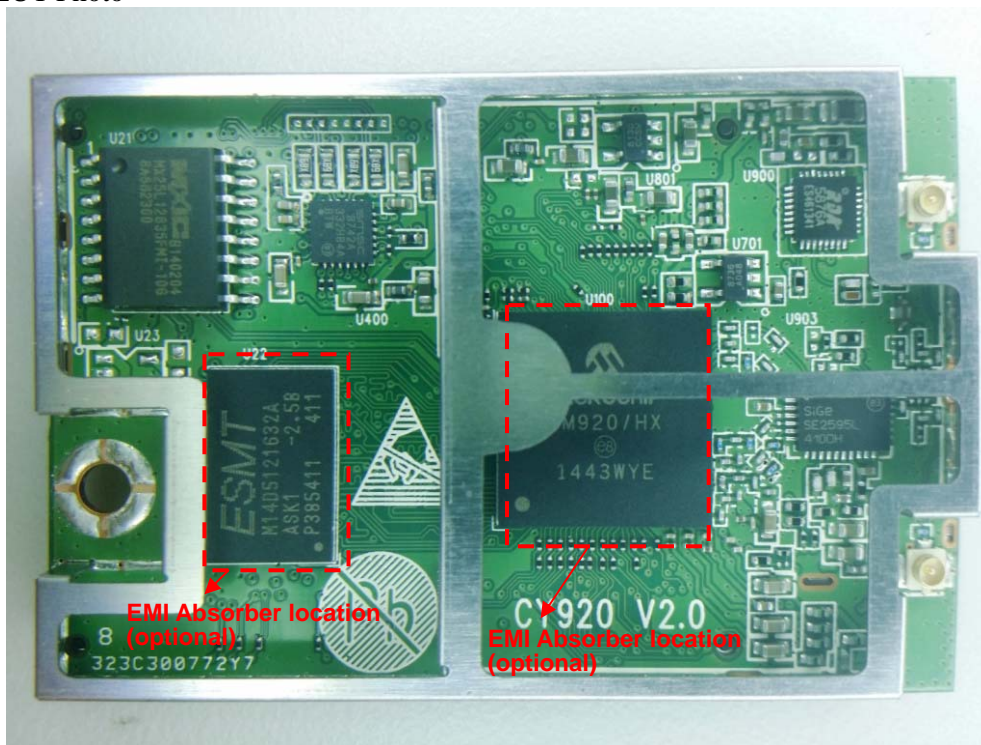


(83) EUT Photo - WAL SIN / RFDPA870925IMLB304

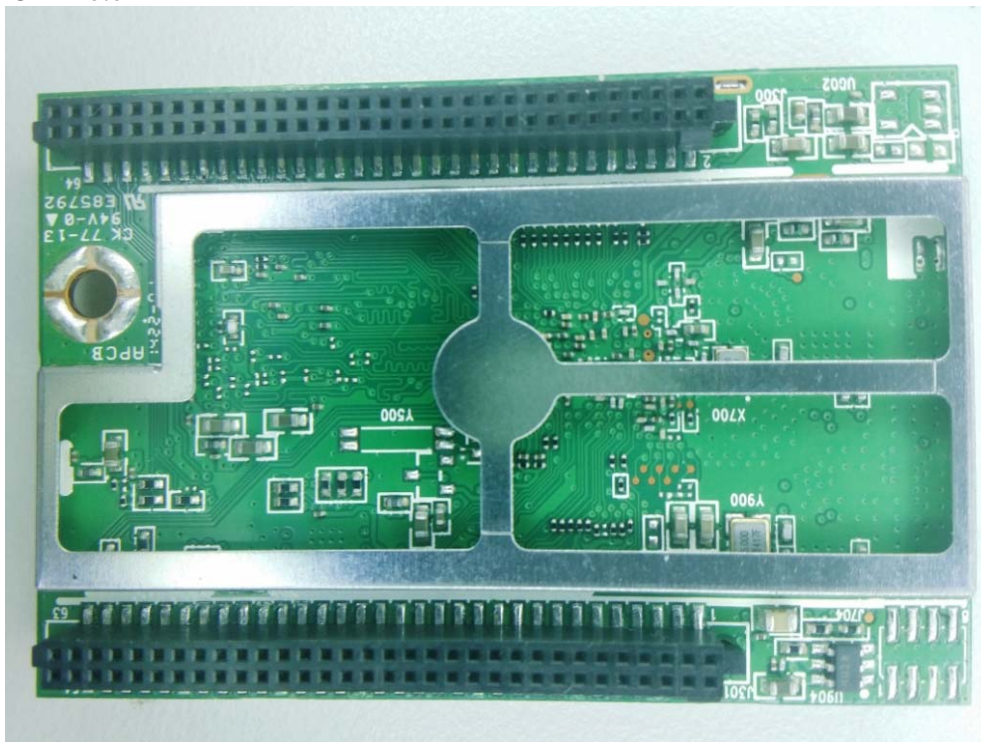


Attachment 3 : EUT Detailed Photographs (Shield can height and absorber etc.)

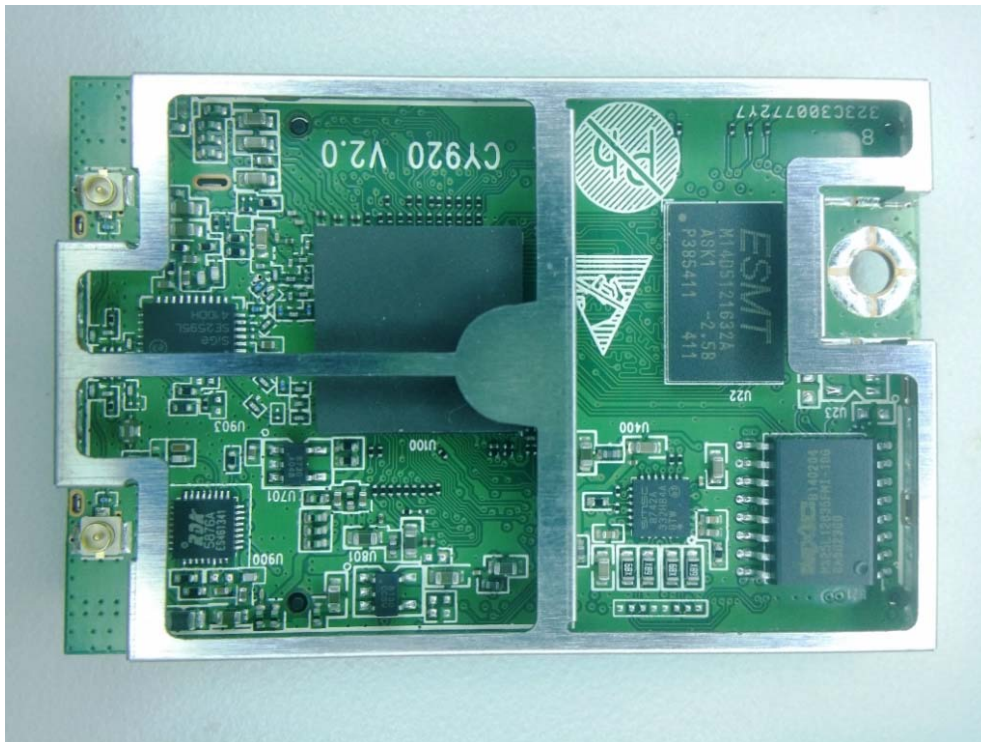
(5) EUT Photo



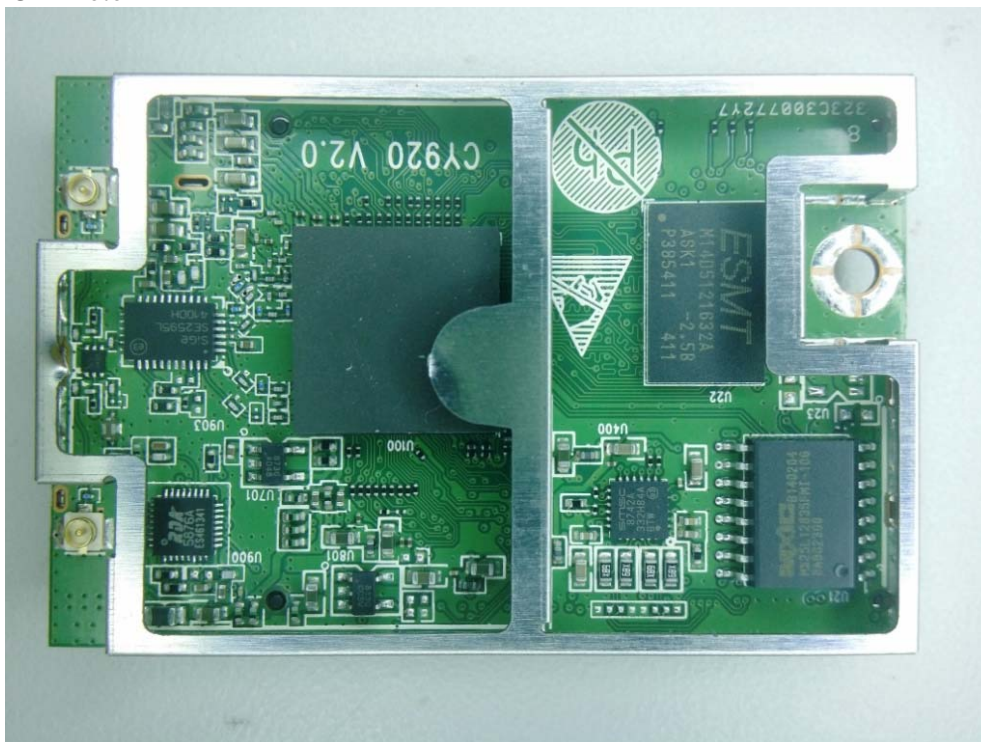
(6) EUT Photo



(7) EUT Photo



(8) EUT Photo



(9) EUT Photo

