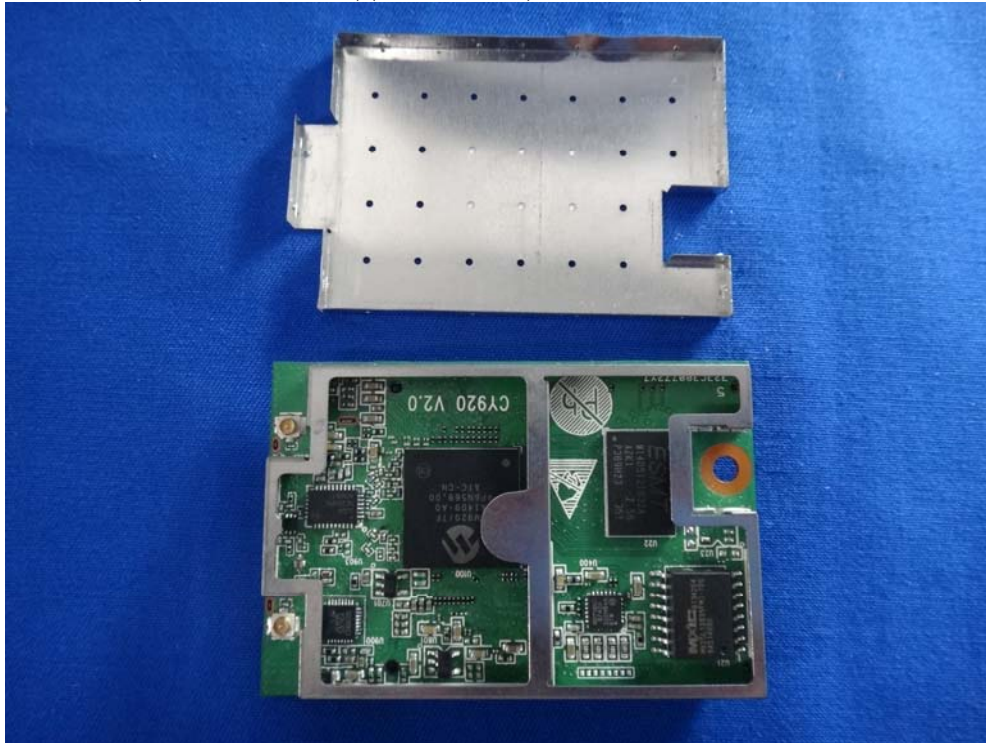
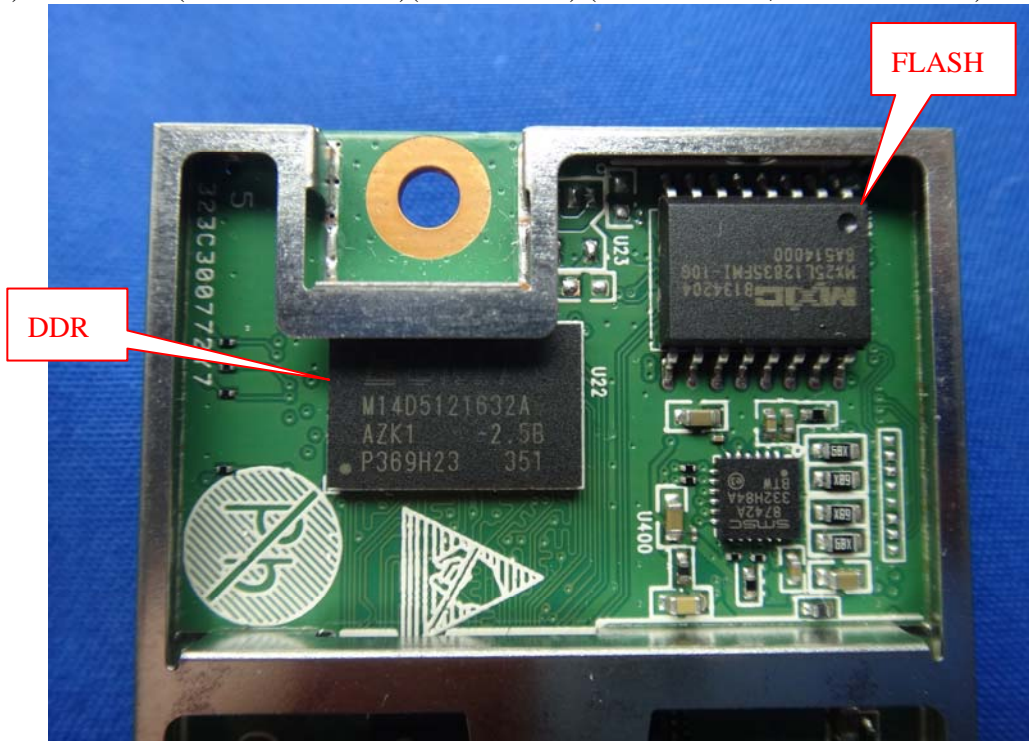


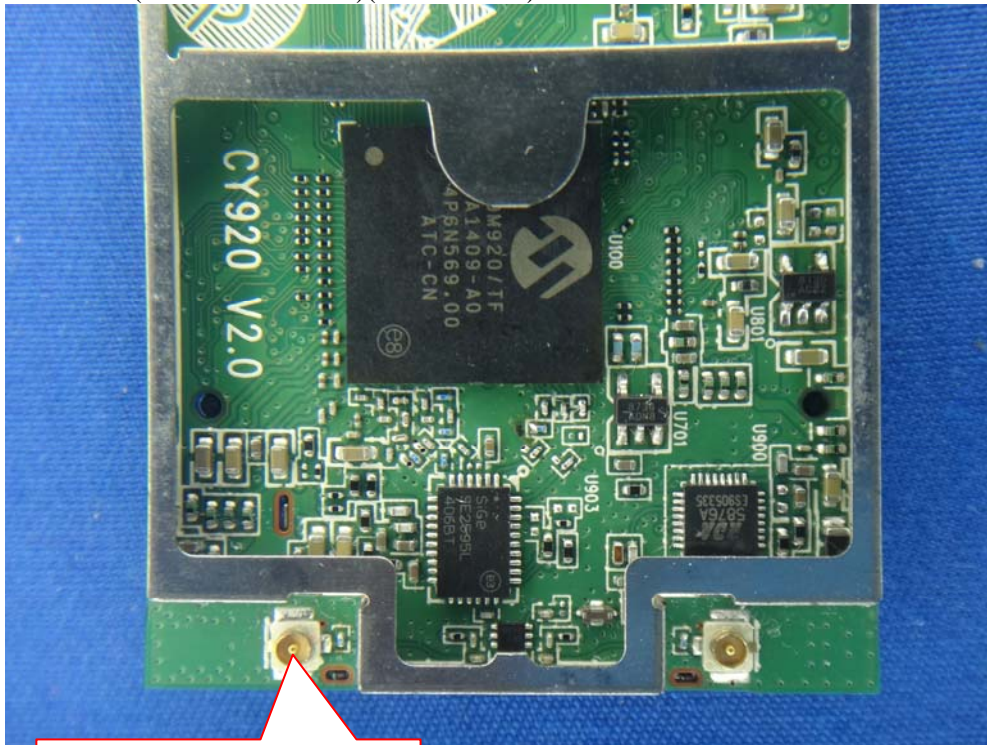
(5) EUT Photo (M/N: CY920-24C)(Main Source)



(6) EUT Photo (M/N: CY920-24C)(Main Source) (DDR / ESMT ; FLASH / MXIC)

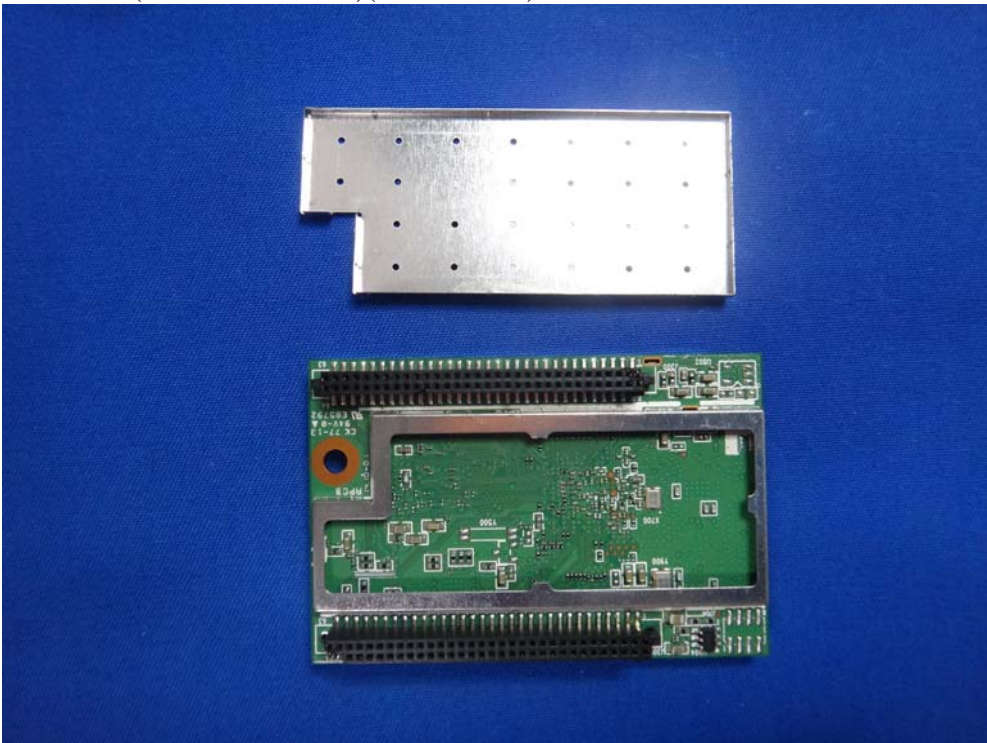


(7) EUT Photo (M/N: CY920-24C)(Main Source)

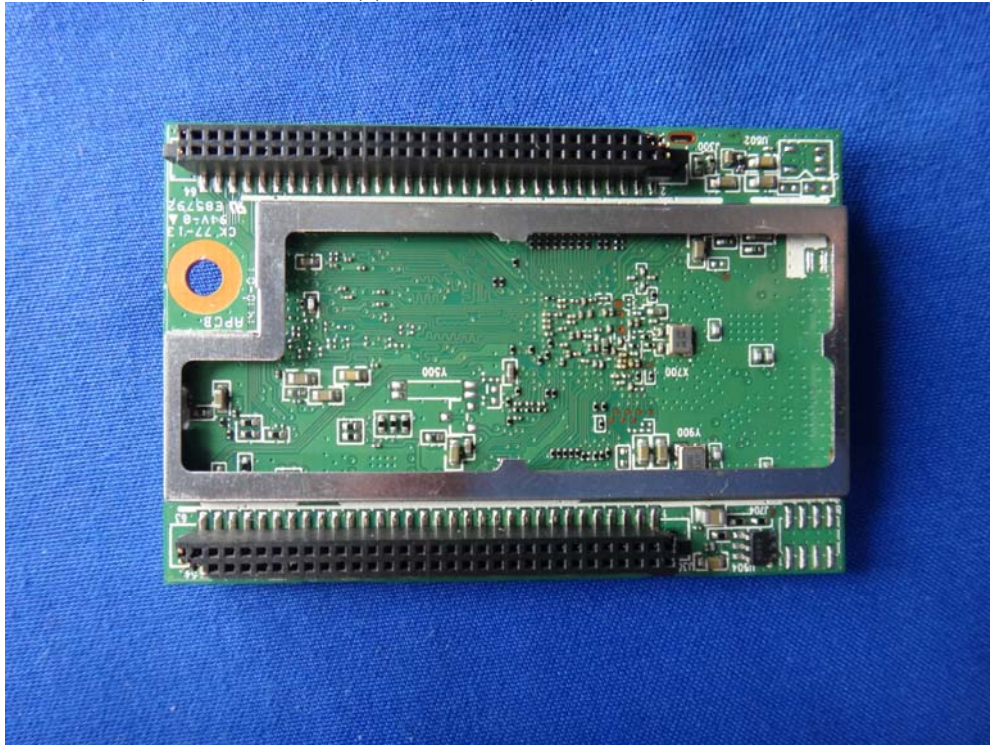


Antenna Connector / IPEX

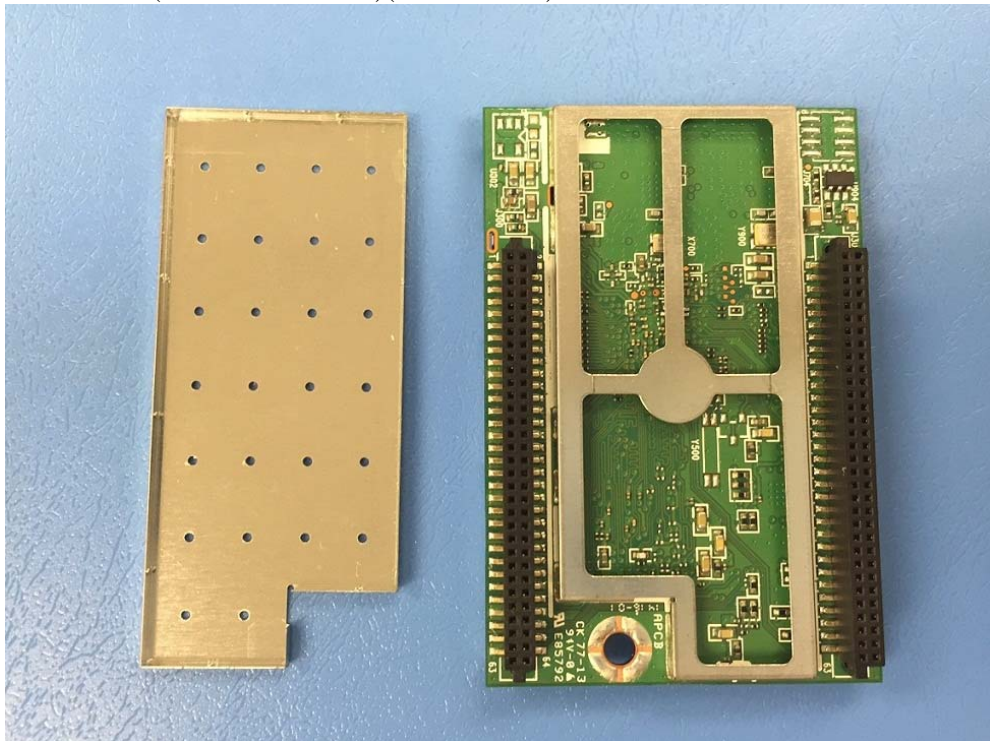
(8) EUT Photo (M/N: CY920-24C)(Main Source)



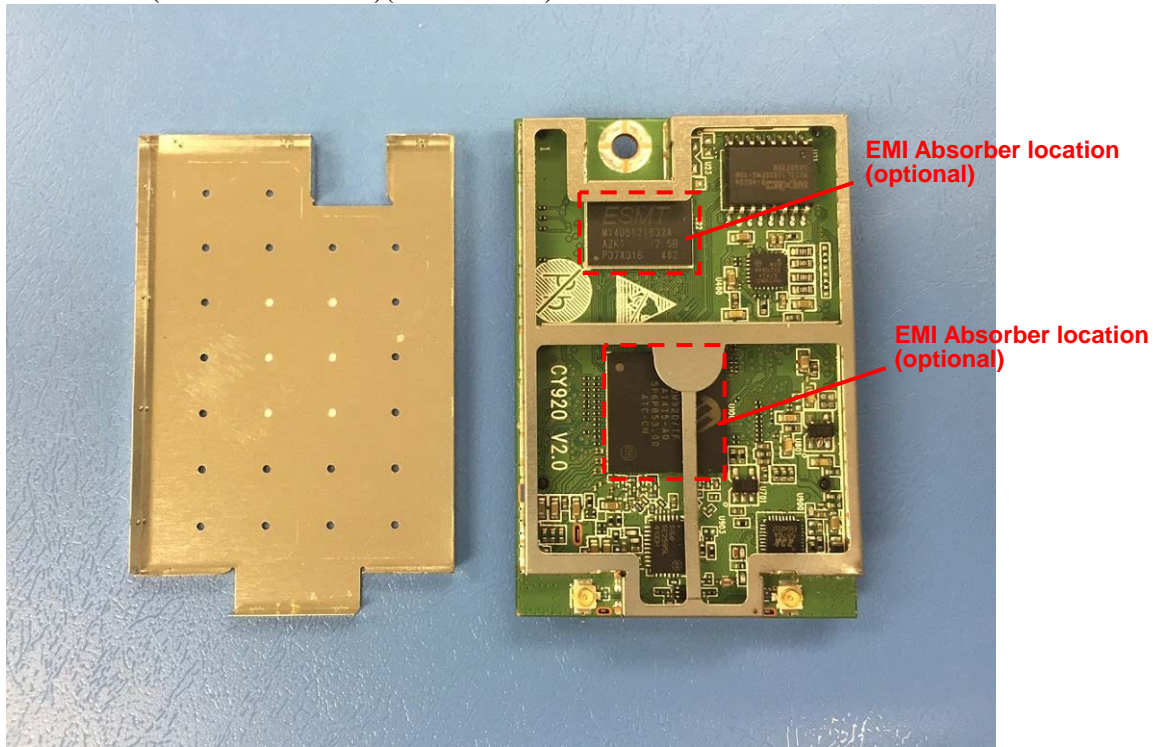
(9) EUT Photo (M/N: CY920-24C)(Main Source)



(10) EUT Photo (M/N: CY920-24C)(Main Source)



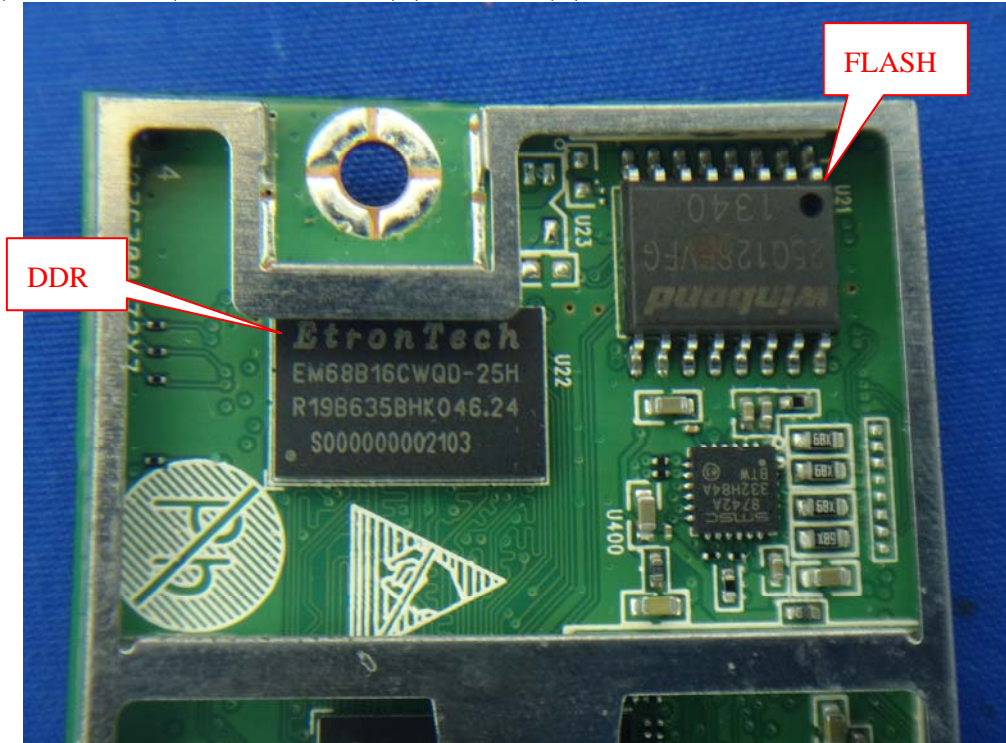
(11) EUT Photo (M/N: CY920-24C)(Main Source)



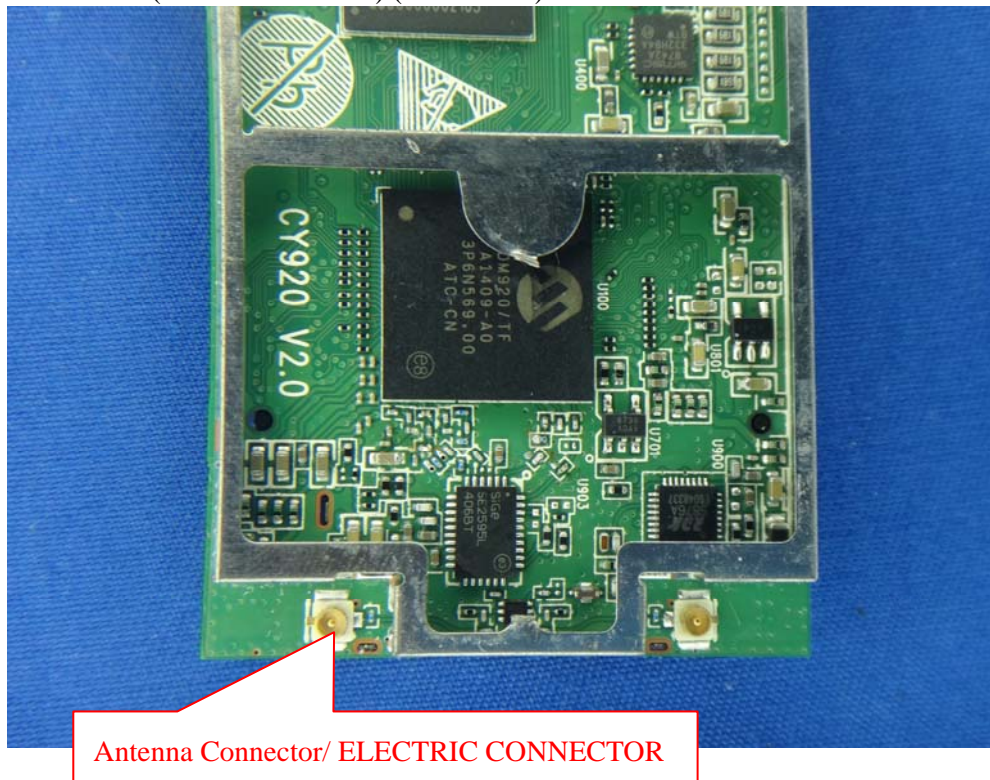
(12) EUT Photo (M/N: CY920-24C) (2nd Source)



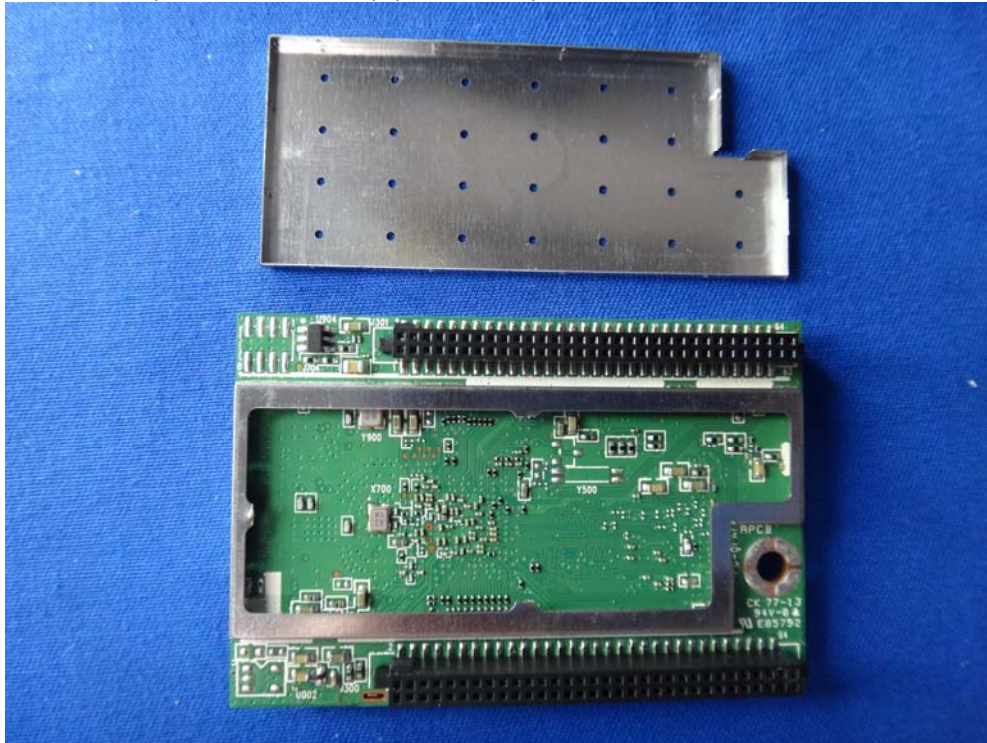
(13) EUT Photo (M/N: CY920-24C) (2nd Source) (DDR / EtronTech ; FLASH / Winbond)



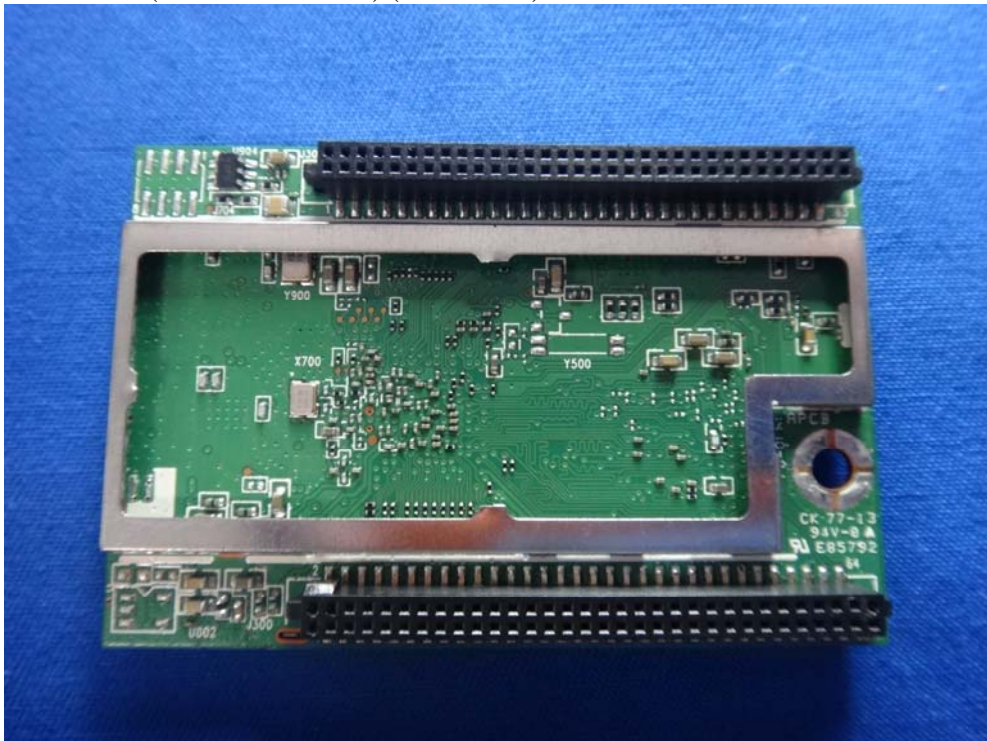
(14) EUT Photo (M/N: CY920-24C) (2nd Source)



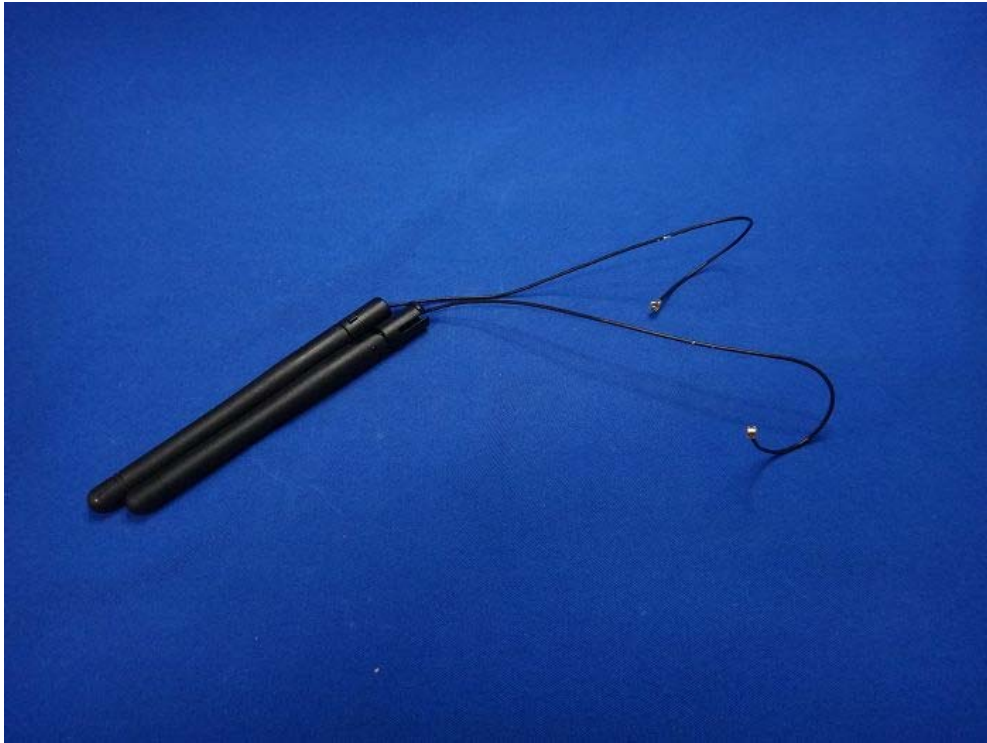
(15) EUT Photo (M/N: CY920-24C) (2nd Source)



(16) EUT Photo (M/N: CY920-24C) (2nd Source)



(17) EUT Photo -WALSIN / PI_RFDPA870920IMLB301_V01 Without Core



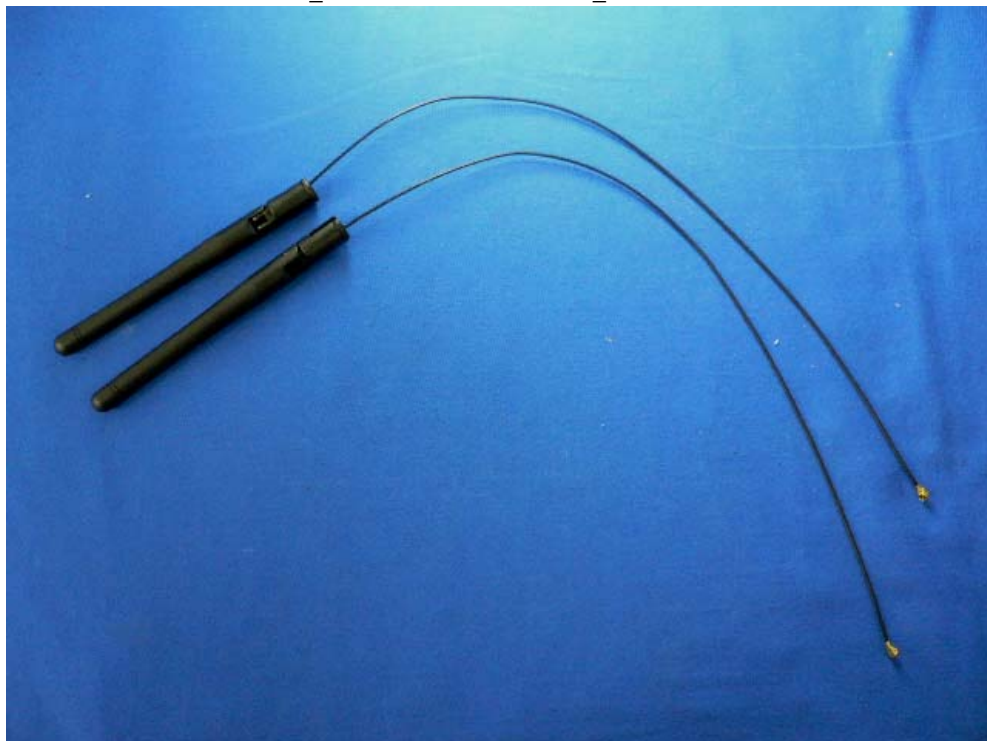
(18) EUT Photo - WALSIN / PI_RFDPA870920IMLB301_V01 With Core



(19) EUT Photo - WALSIN / PI_RFDPA870920IMLB301_V01 With Core



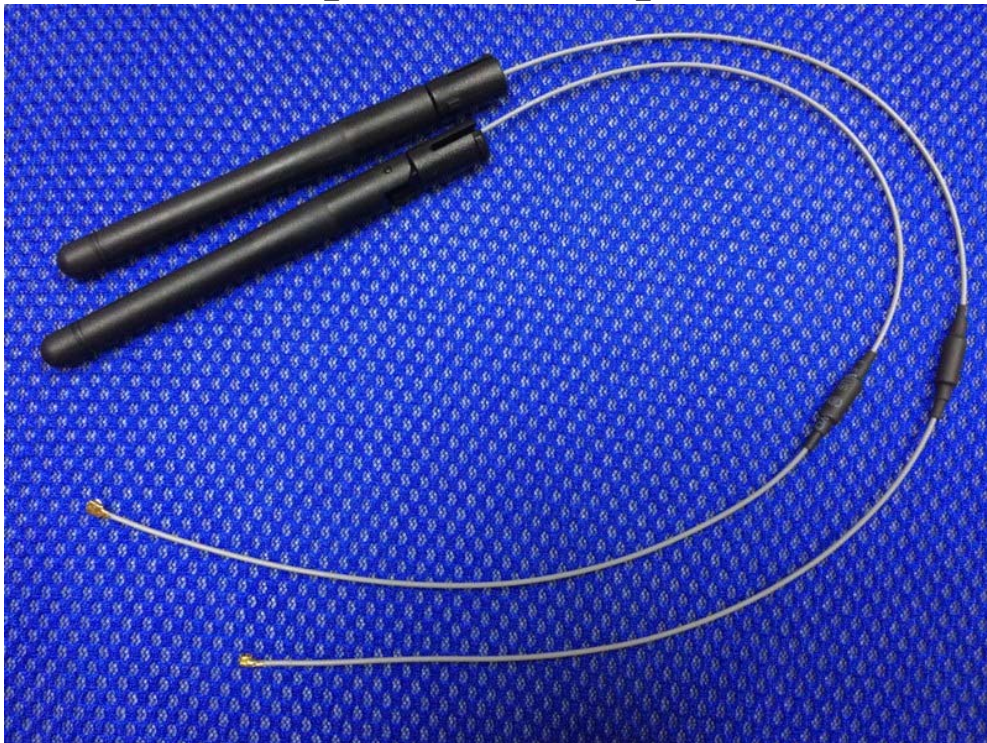
(20) EUT Photo - WALSIN / PI_RFDPA870930IMLB301_V01 Without Core



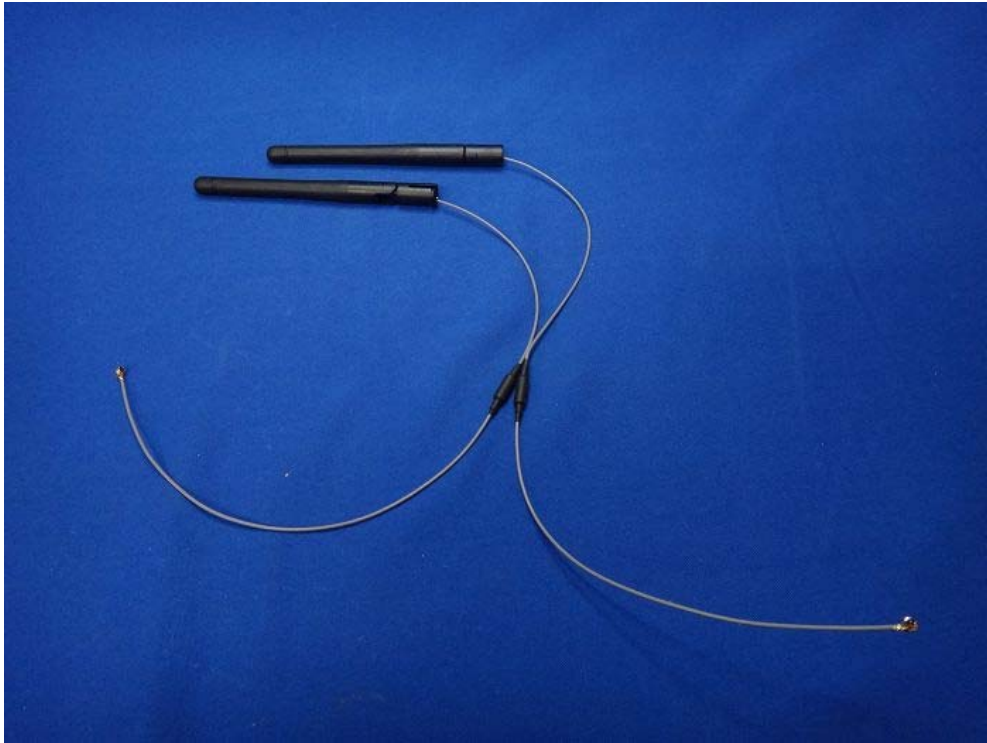
(21) EUT Photo - WAL SIN / PI_RFDPA870930IMLB301_V01 With Core



(22) EUT Photo - WAL SIN / PI_RFDPA870930IMLB301_V01 With Core



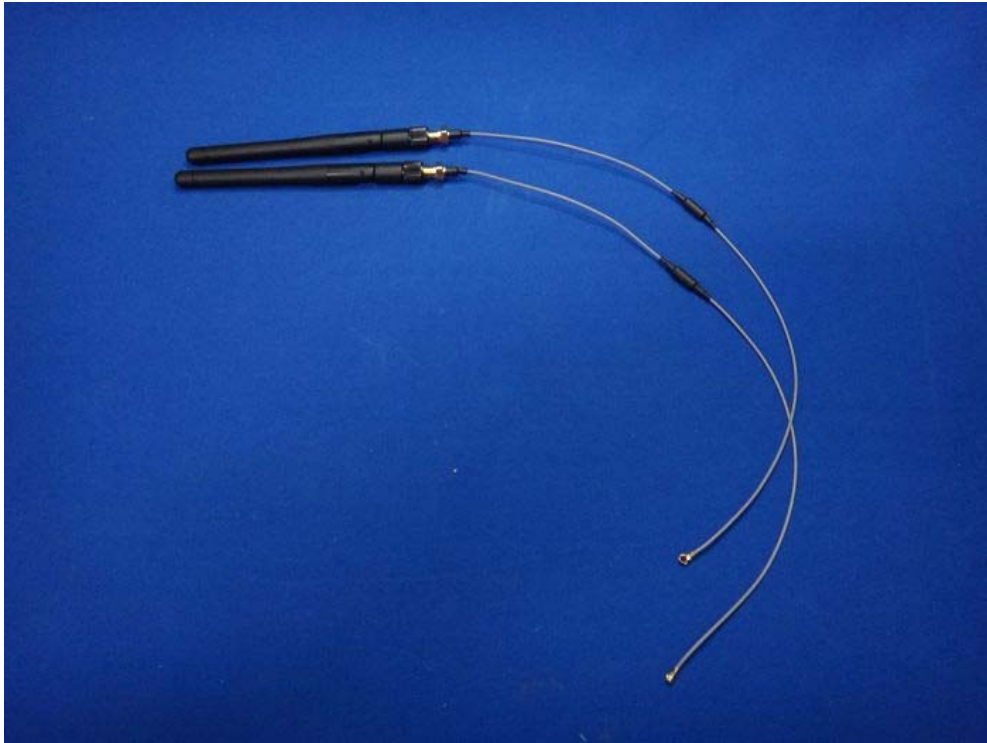
(23) EUT Photo - WALSIN / RFDPA870930IMAB301



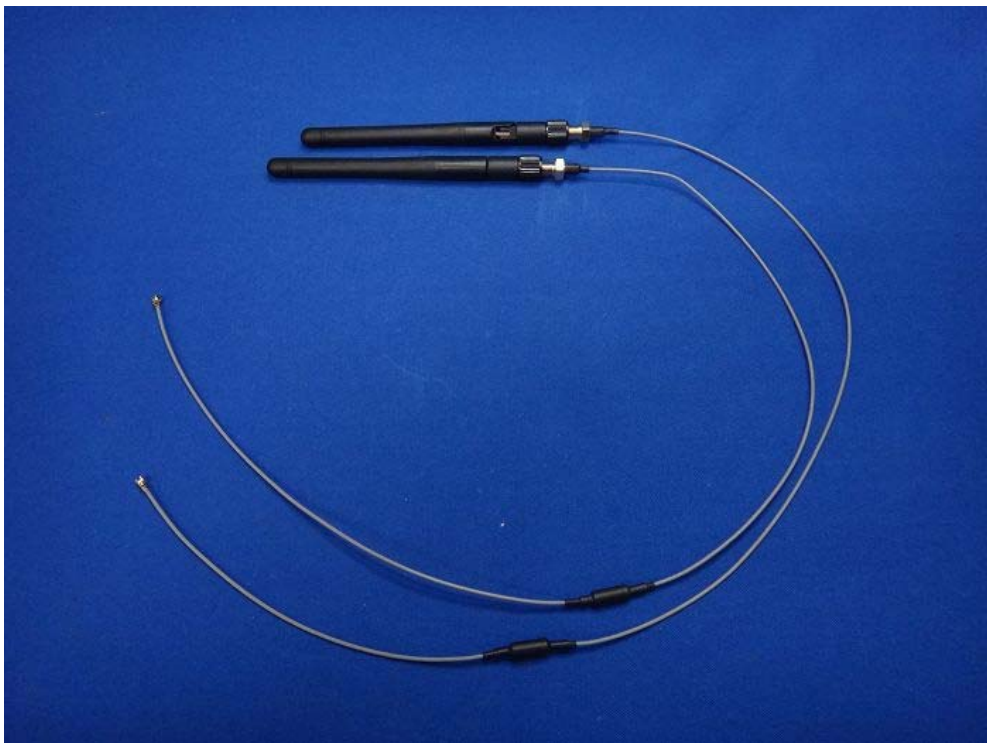
(24) EUT Photo - WALSIN / RFDPA870945IMAB301



(25) EUT Photo - WALSIN / RFDPA870900SBAB801 + RFCBA100630SA6B301



(26) EUT Photo - WALSIN / RFDPA870900SBAB801 + RFCBA100645SA6B301



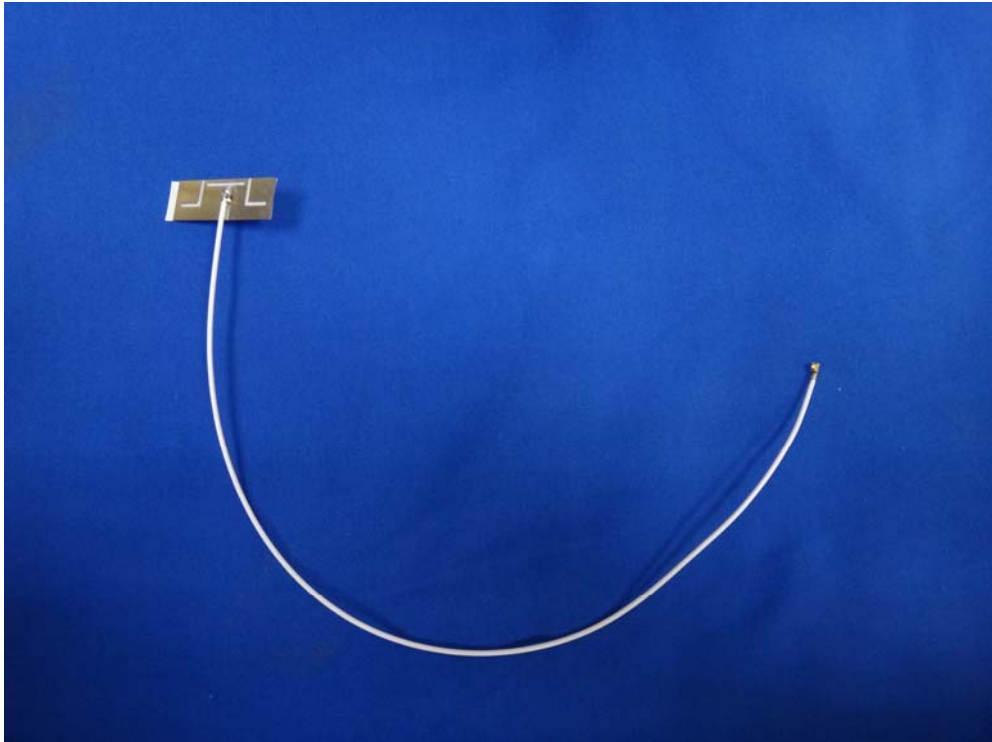
(27) EUT Photo - WALSIN / RFMTA331240IMAB701



(28) EUT Photo - WALSIN / RFMTA331240IMAB701



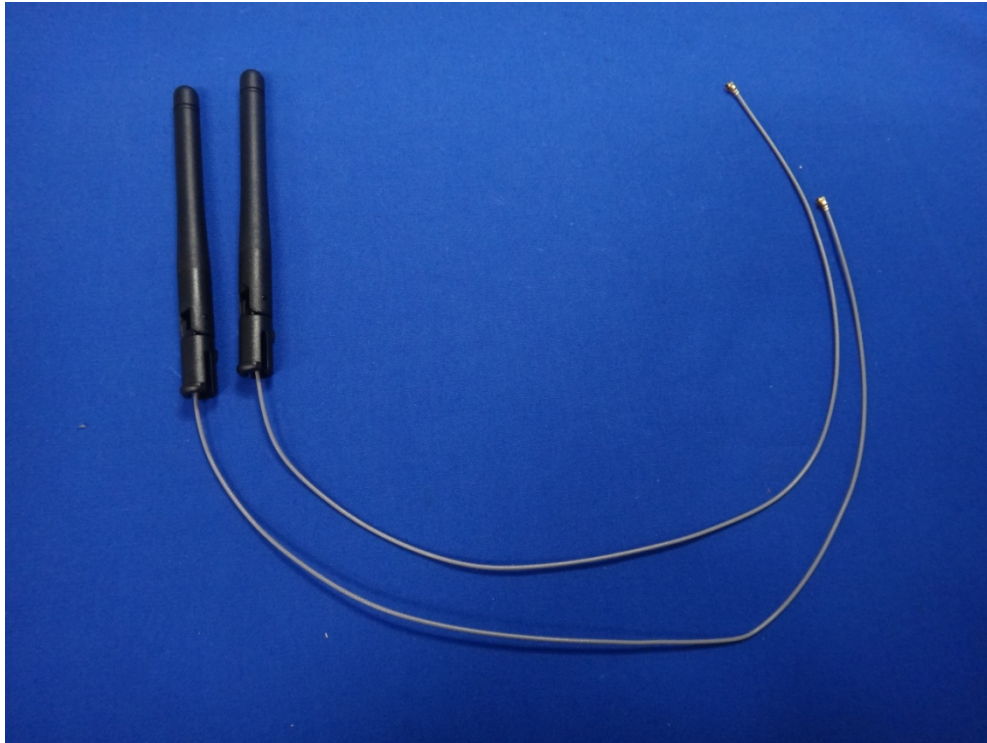
(29) EUT Photo - WALSIN / RFMTA331230IMAB701



(30) EUT Photo - WALSIN / RFMTA331230IMAB701



(31) EUT Photo - WALSIN / RFDPA870933IMLB301 Without Core



(32) EUT Photo - WALSIN / RFDPA870933IMLB301 With Core



(33) EUT Photo - WAL SIN / RFDPA870933IMLB301 With Core

