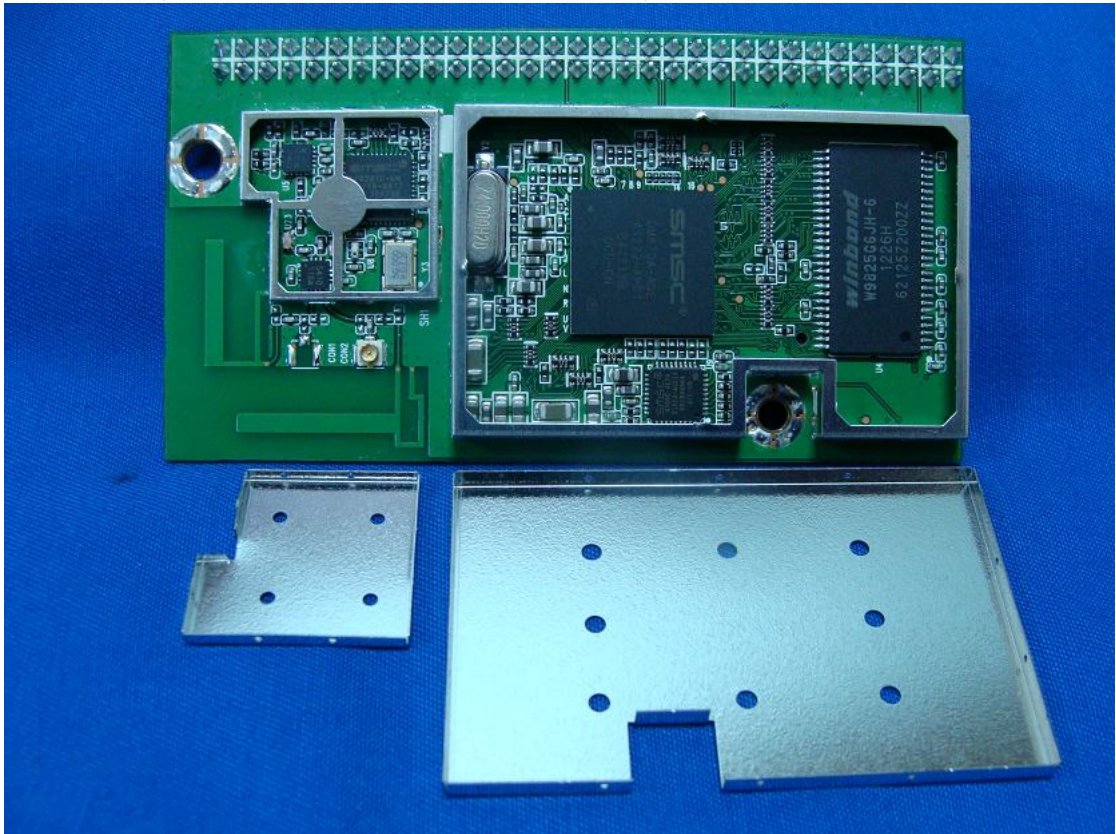
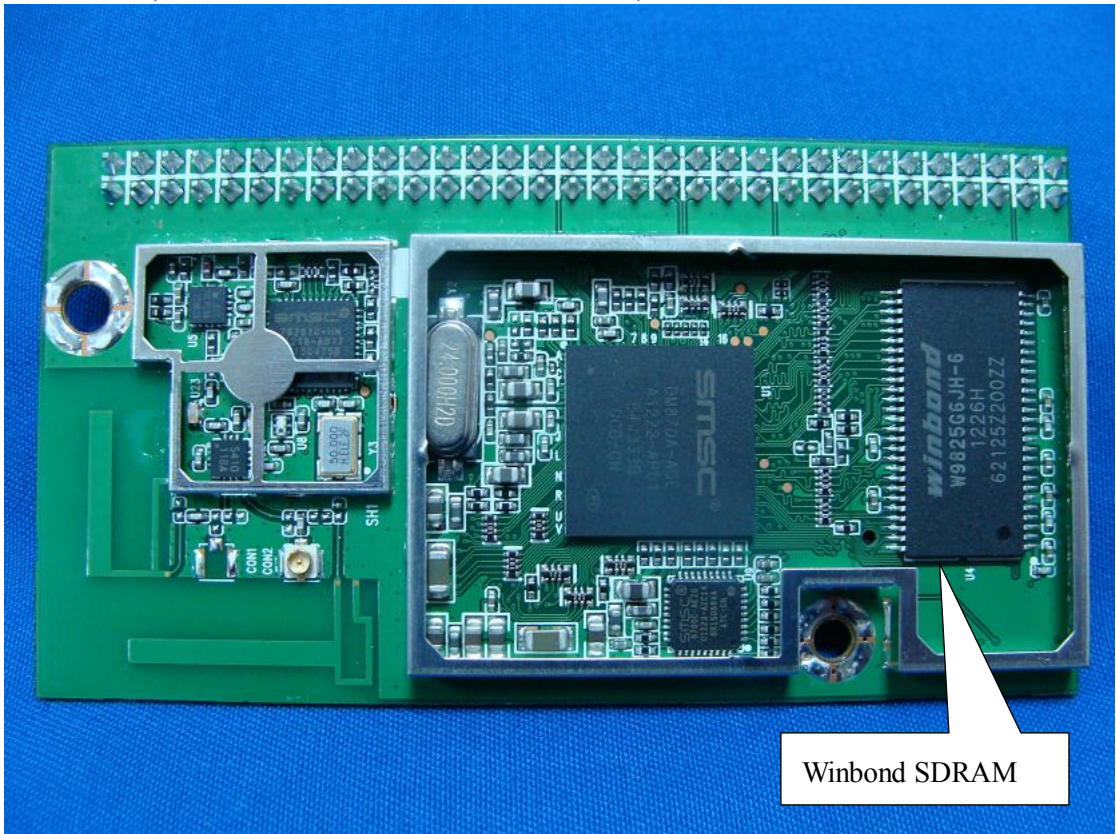


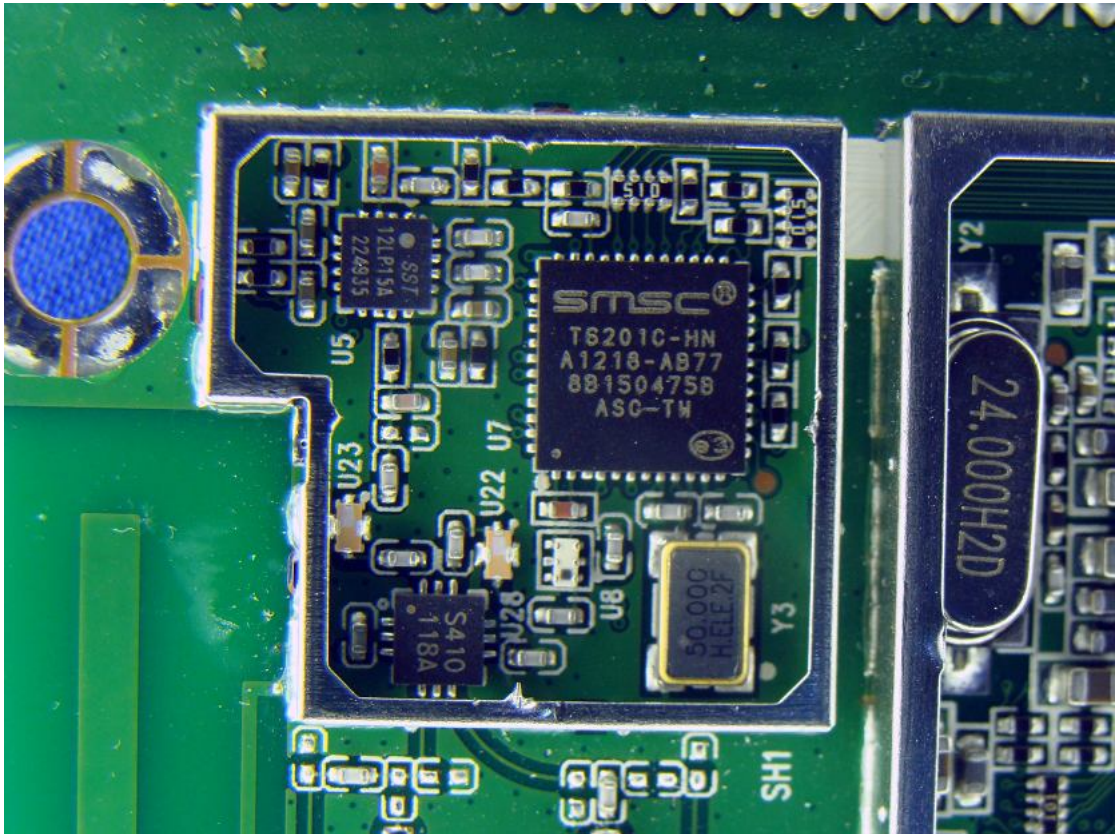
(3) EUT Photo (M/N: CX870-3BB for Winbond SDRAM)



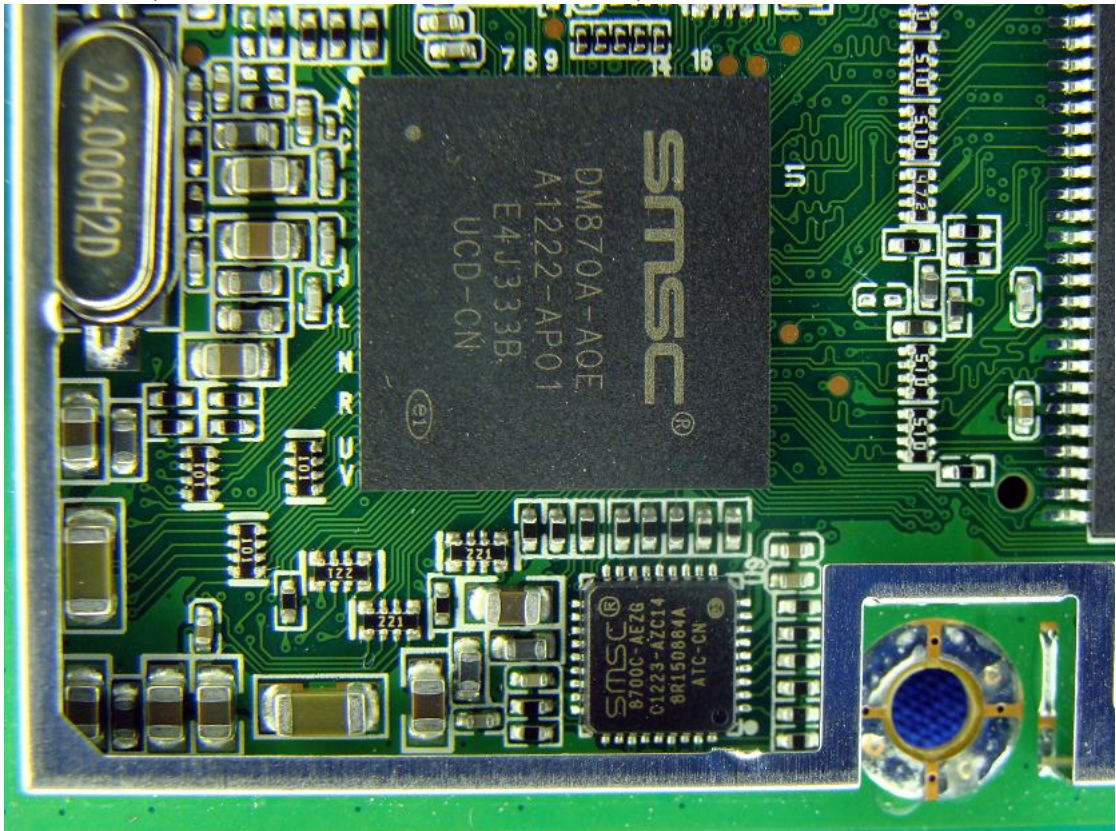
(4) EUT Photo(M/N: CX870-3BB for Winbond SDRAM)



(5) EUT Photo (M/N: CX870-3BB for Winbond SDRAM)



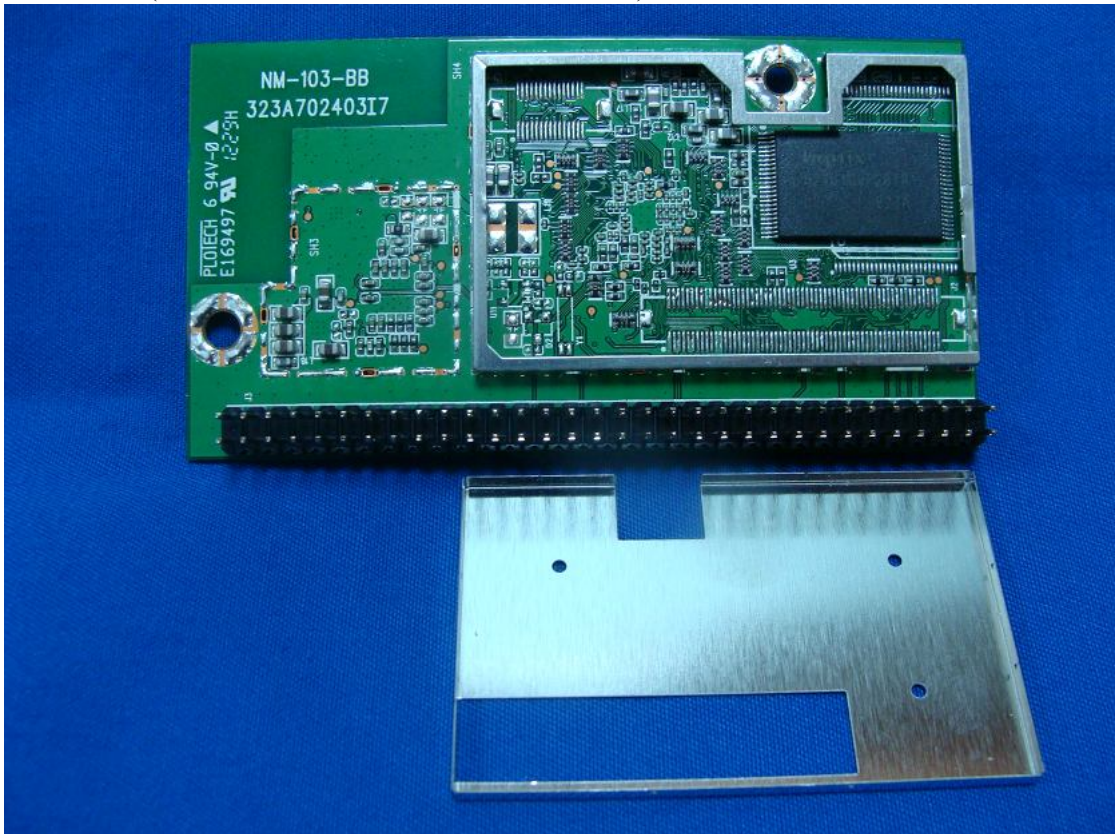
(6) EUT Photo (M/N: CX870-3BB for Winbond SDRAM)



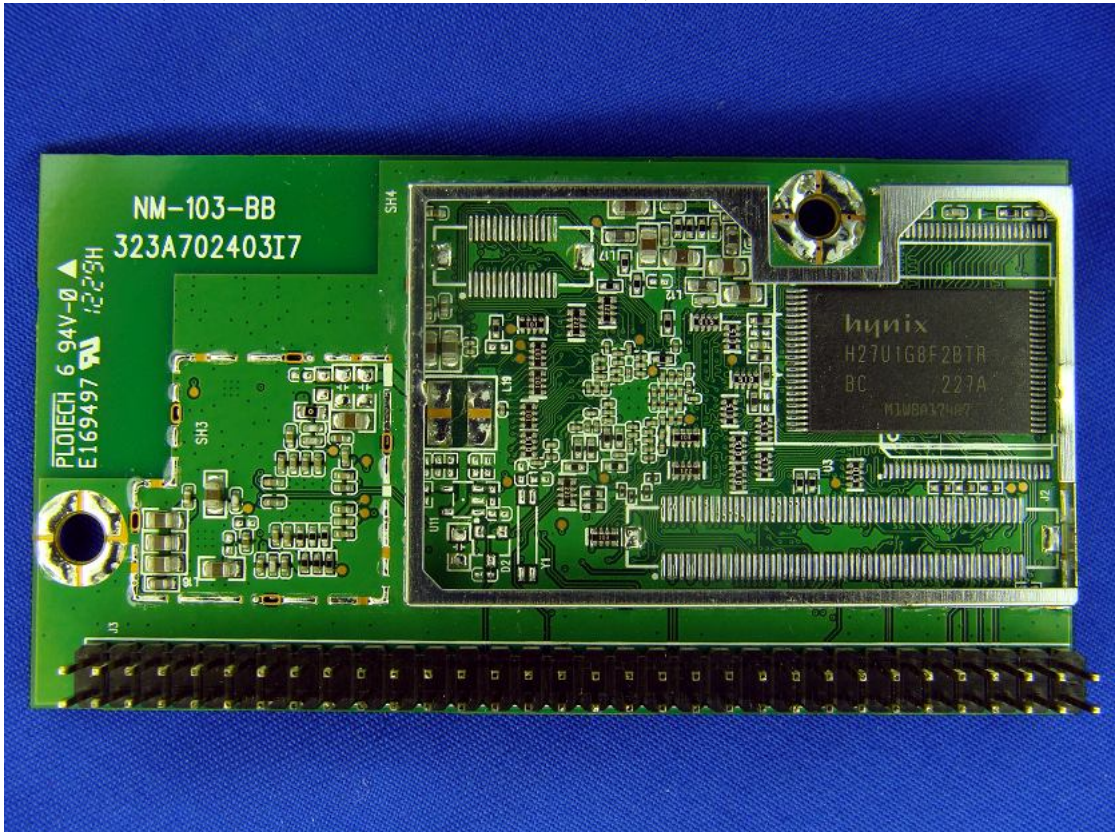
(7) EUT Photo (M/N: CX870-3BB for Winbond SDRAM)



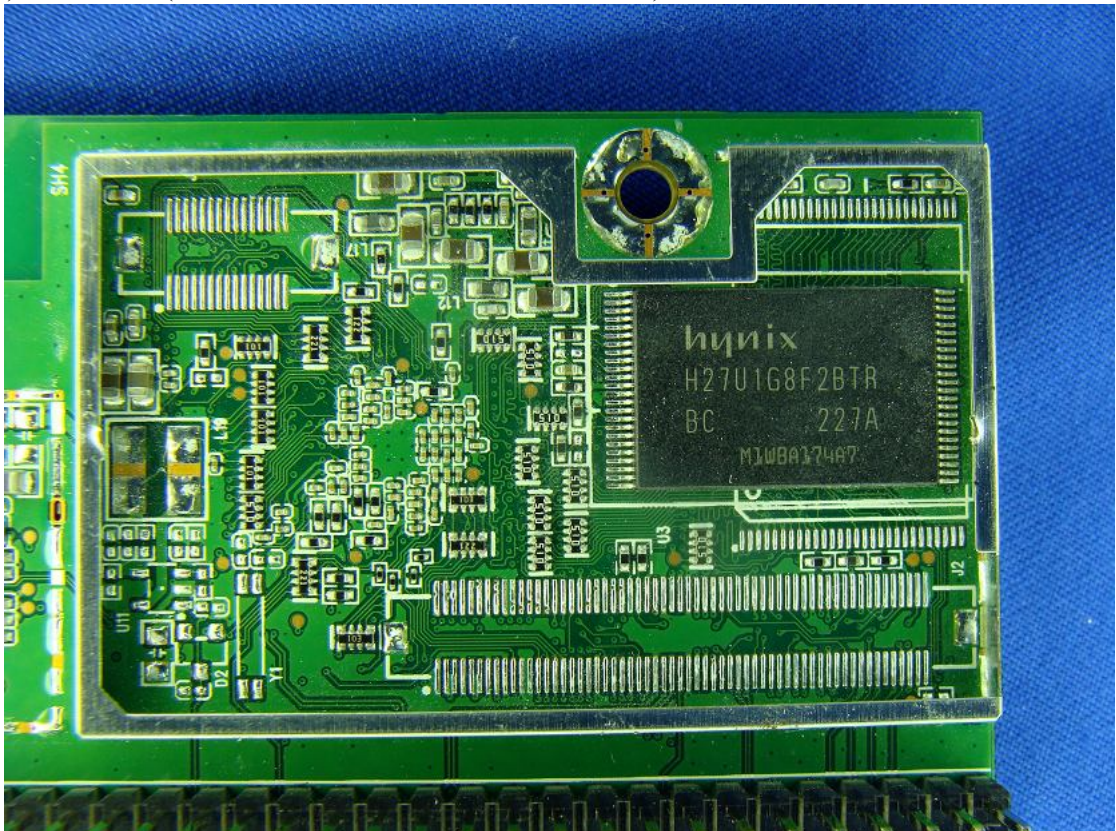
(8) EUT Photo(M/N: CX870-3BB for Winbond SDRAM)



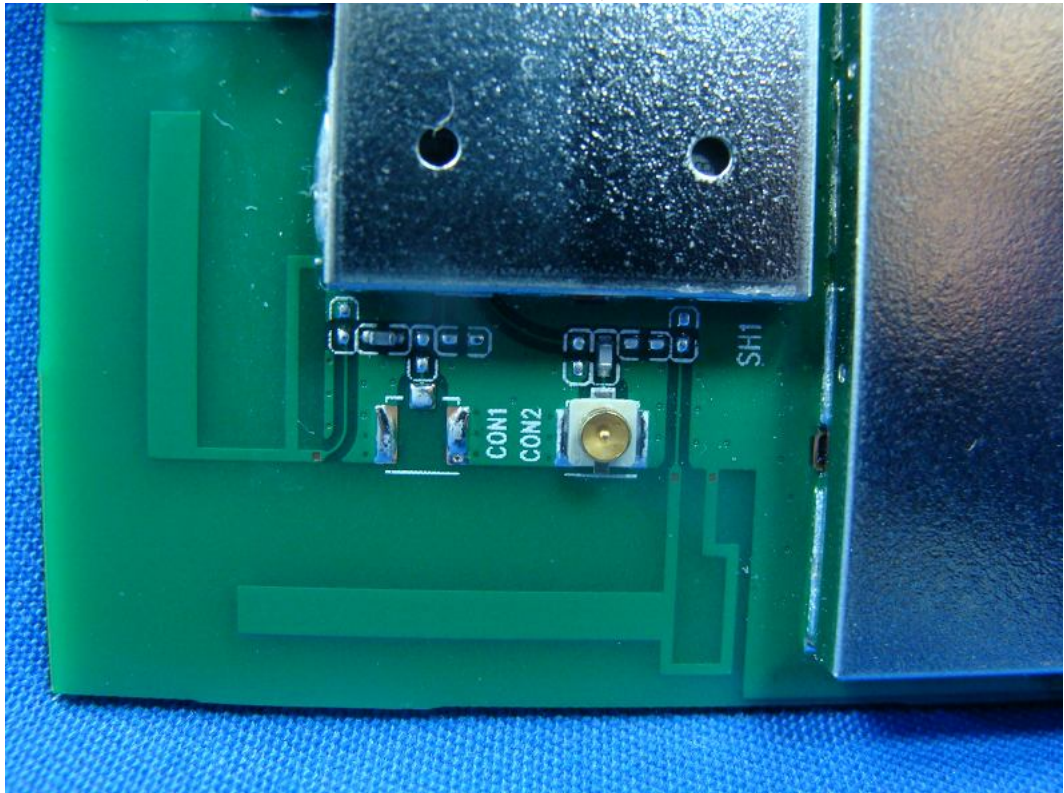
(9) EUT Photo (M/N: CX870-3BB for Winbond SDRAM)



(10) EUT Photo(M/N: CX870-3BB for Winbond SDRAM)



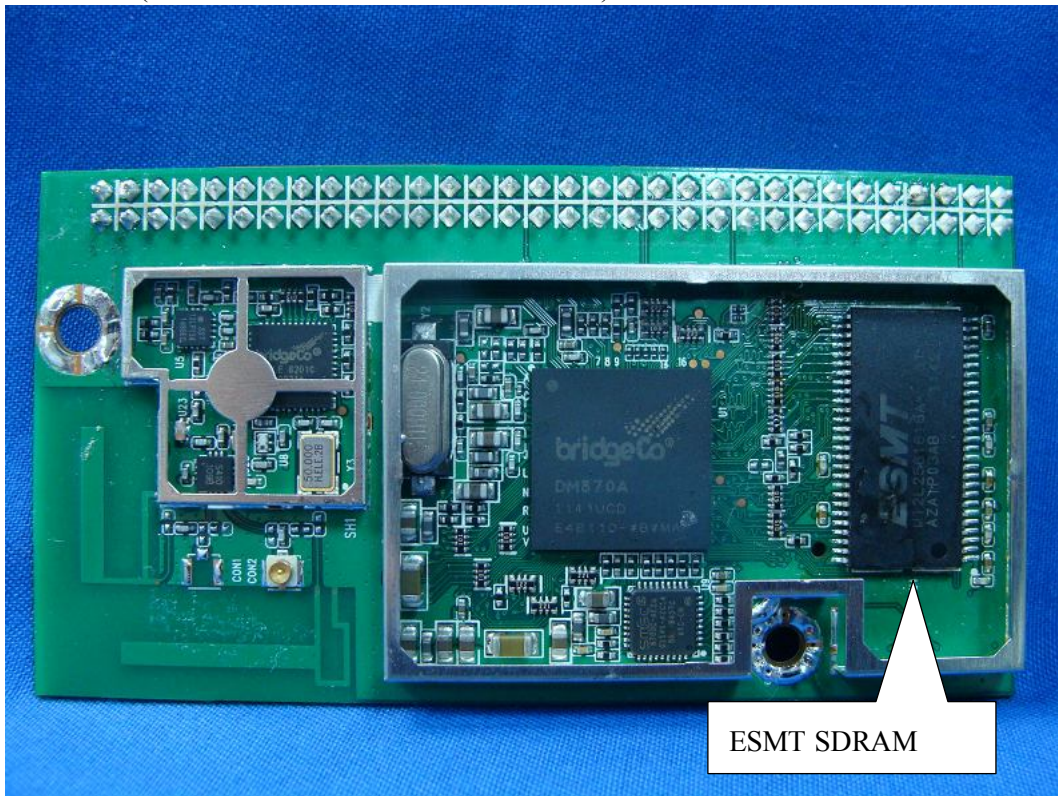
(13) EUT Photo(M/N: CX870-3BB for ESMT SDRAM)



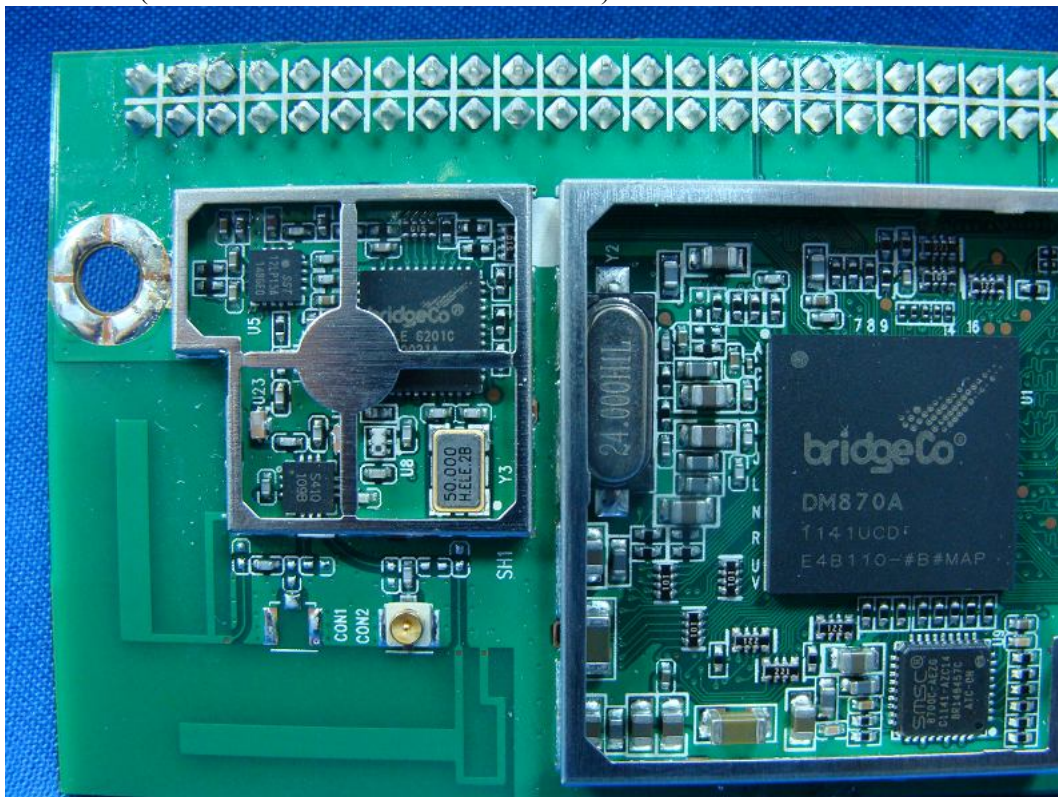
(14) EUT Photo(M/N: CX870-3BB for ESMT SDRAM)



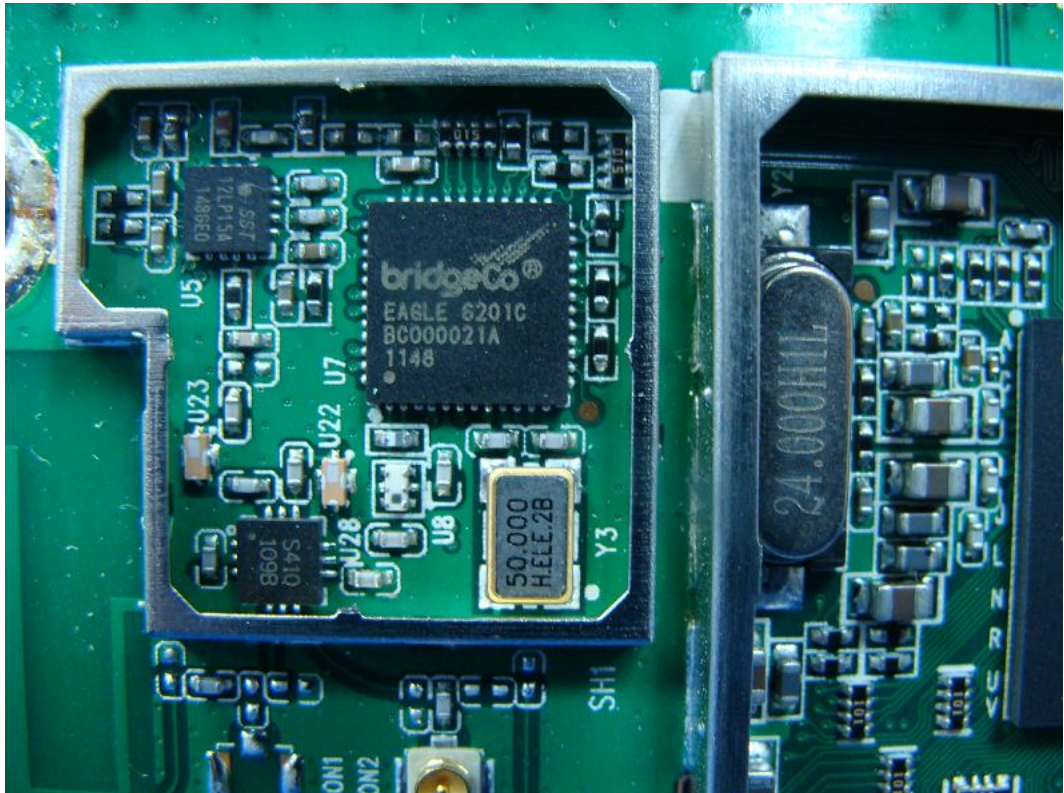
(15) EUT Photo(M/N: CX870-3BB for ESMT SDRAM)



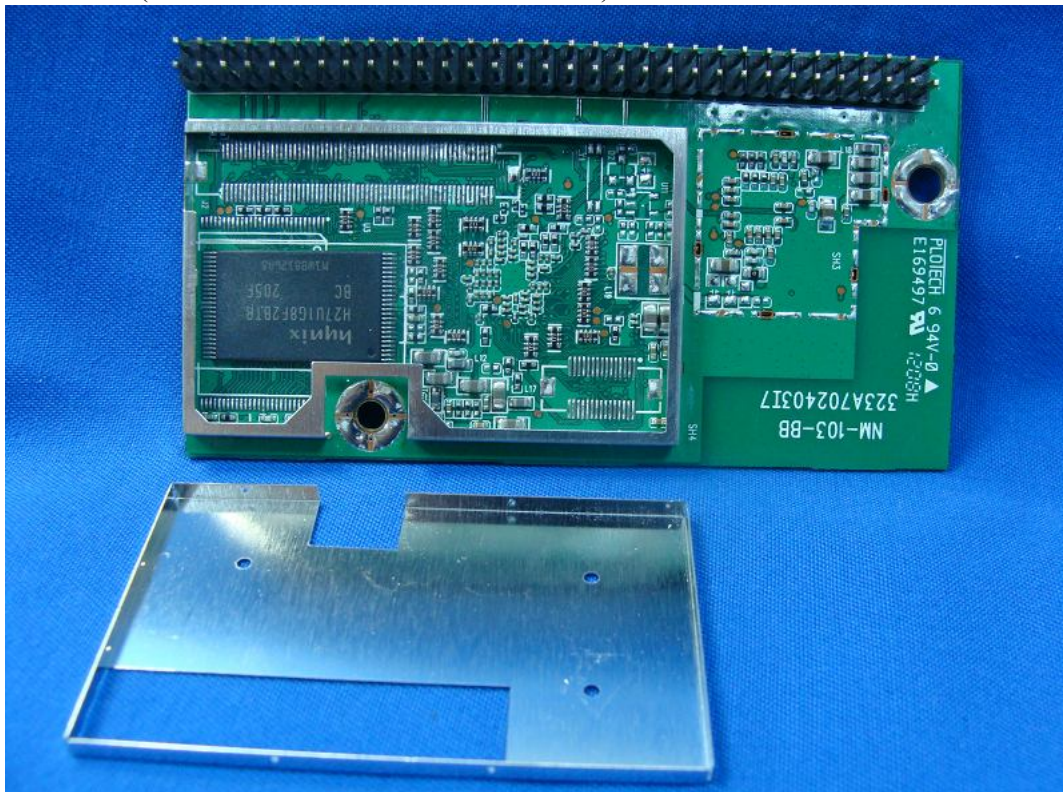
(16) EUT Photo(M/N: CX870-3BB for ESMT SDRAM)



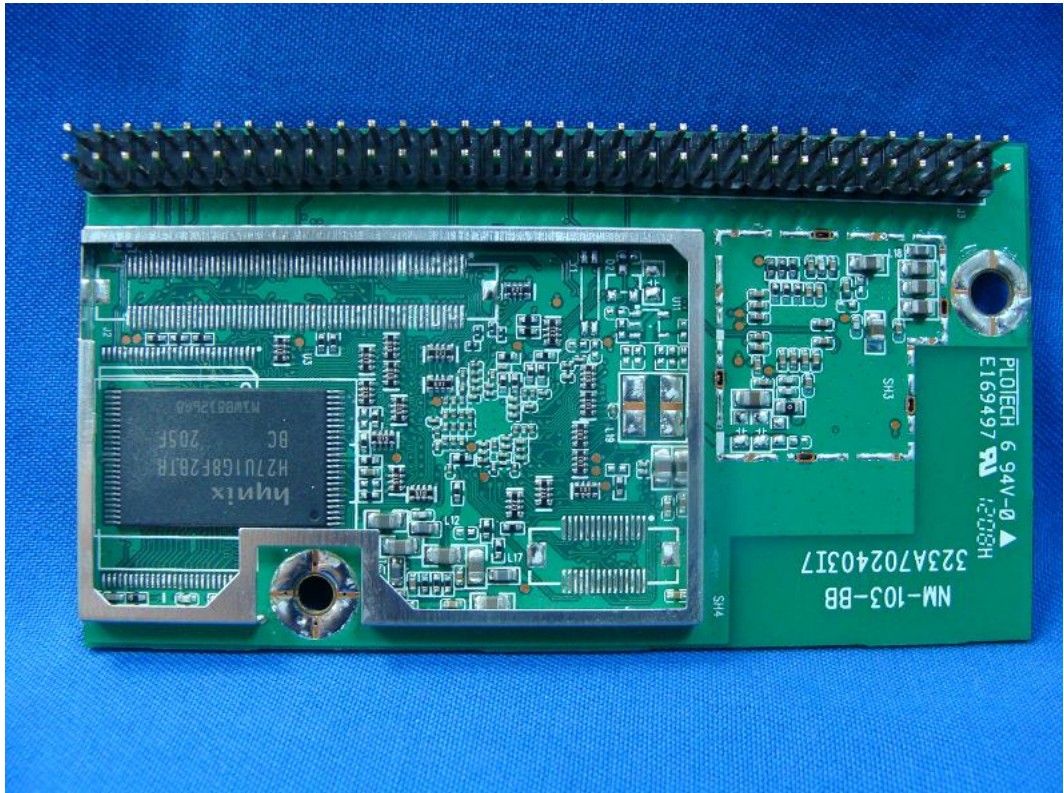
(17) EUT Photo(M/N: CX870-3BB for ESMT SDRAM)



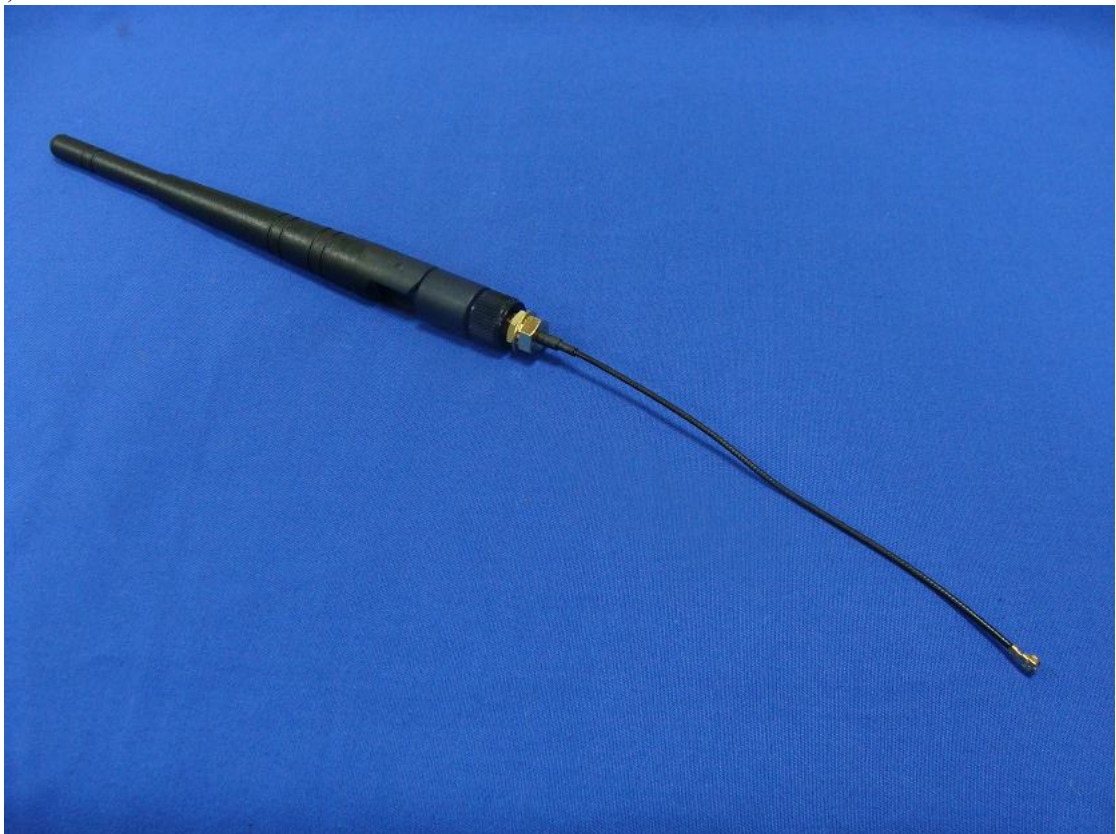
(18) EUT Photo(M/N: CX870-3BB for ESMT SDRAM)



(19) EUT Photo(M/N: CX870-3BB for ESMT SDRAM)

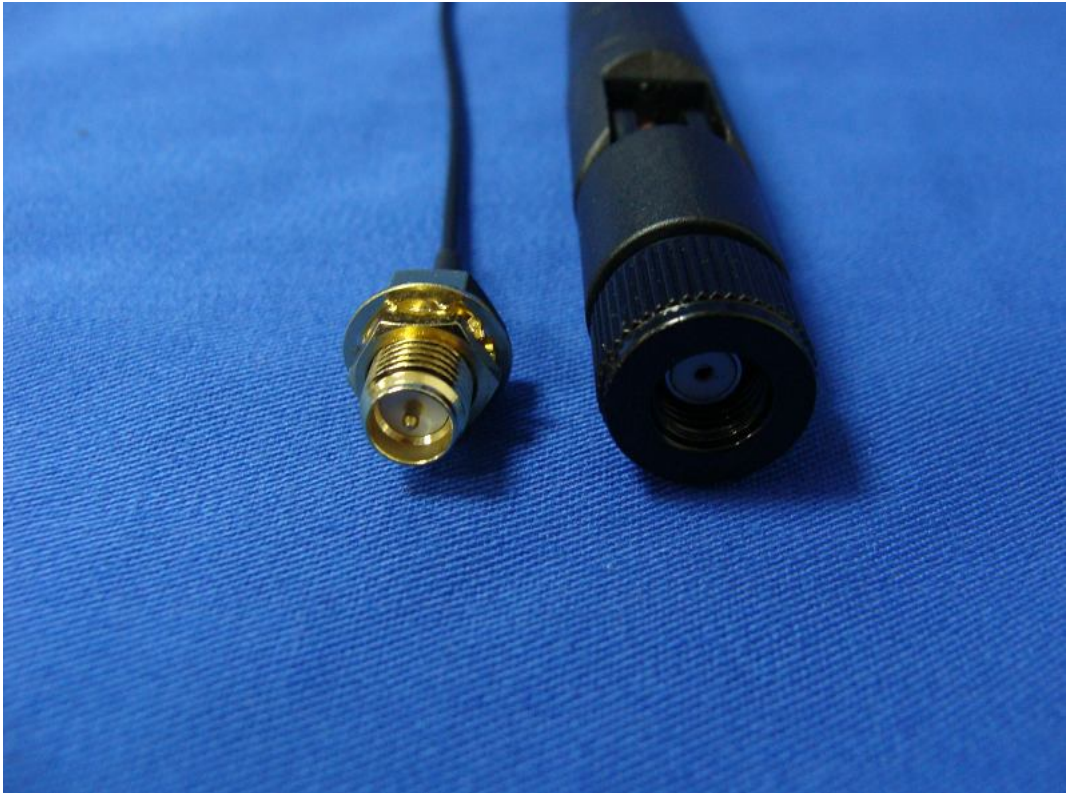


(20) EUT Photo





(21) EUT Photo



(22) EUT Photo



(23) EUT Photo



(24) EUT Photo

