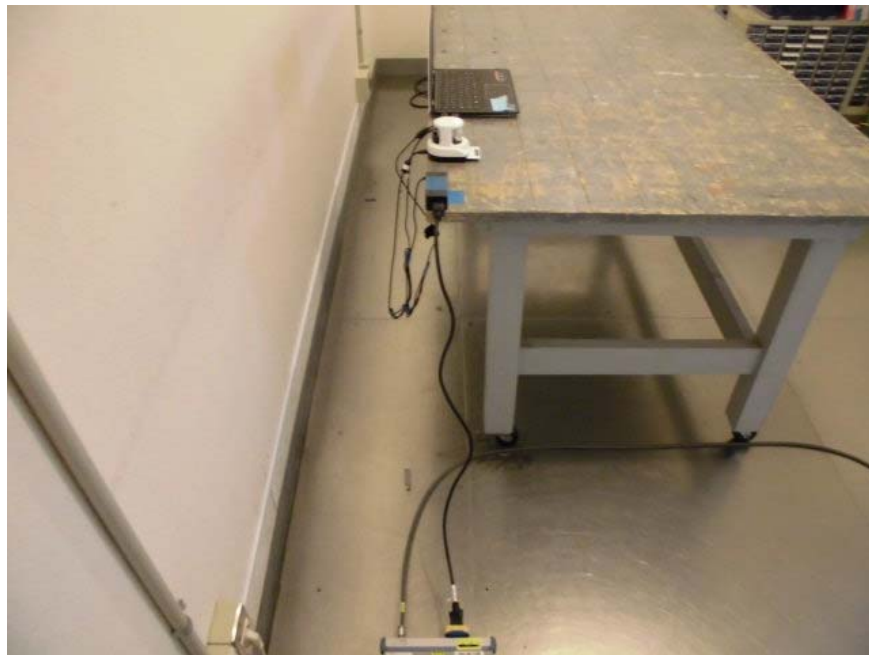
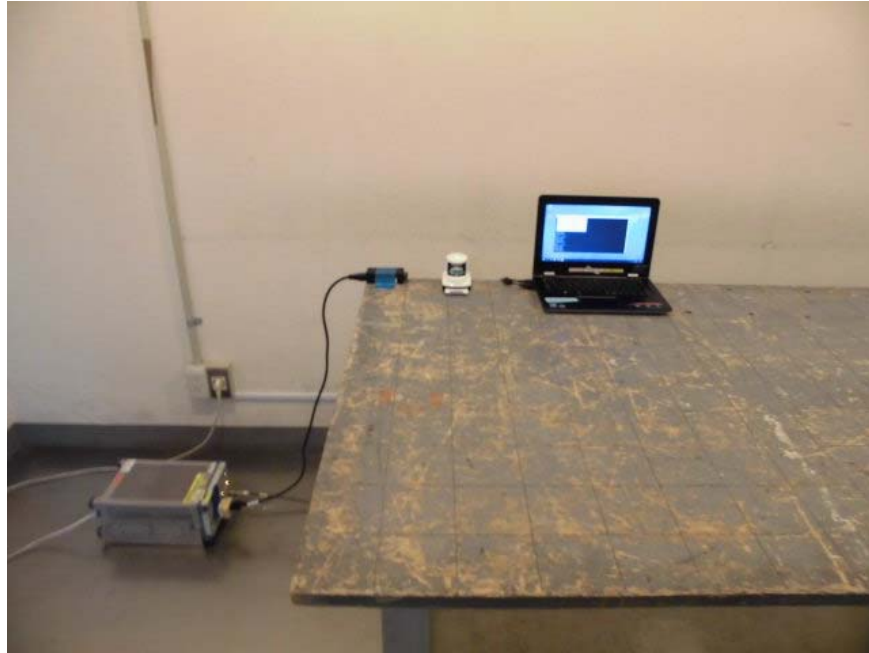


### Appendix 3: Photographs of test setup

#### Conducted emission



---

**UL Japan, Inc.**  
**Yokowa EMC Lab.**

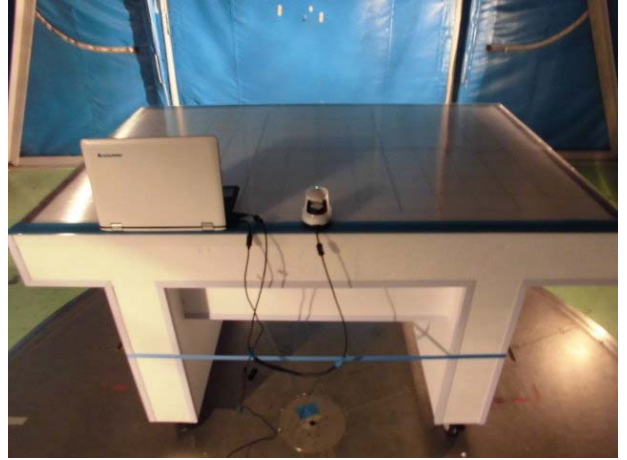
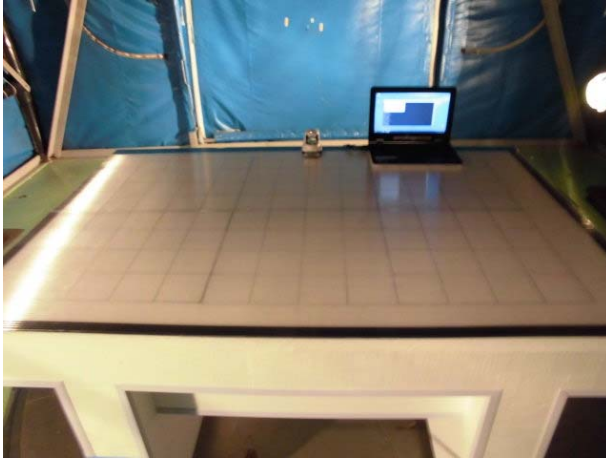
108 Yokowa-cho, Ise-shi, Mie-ken, 516-1106 JAPAN

Telephone: +81 596 24 8750

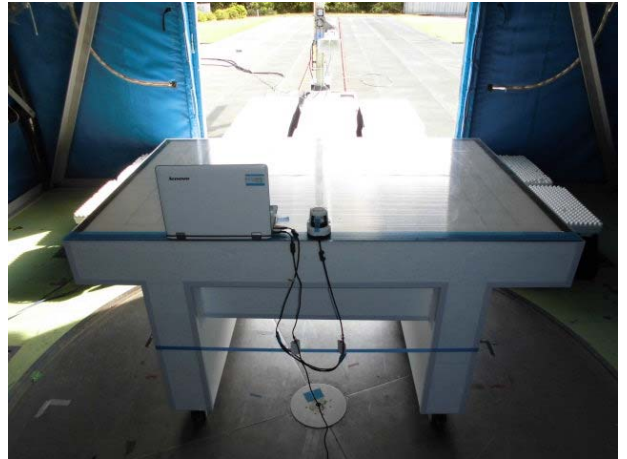
Facsimile: +81 596 39 0232

**Radiated emission**

**(Below 1 GHz)**



**(Above 1 GHz)**



**End of Report**

---

**UL Japan, Inc.**  
**Yokowa EMC Lab.**

108 Yokowa-cho, Ise-shi, Mie-ken, 516-1106 JAPAN

Telephone: +81 596 24 8750

Facsimile: +81 596 39 0232