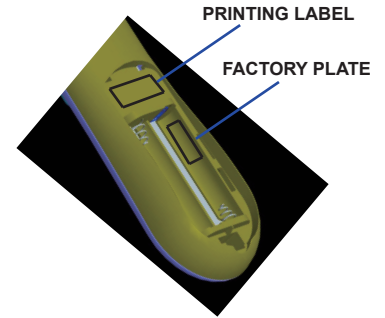
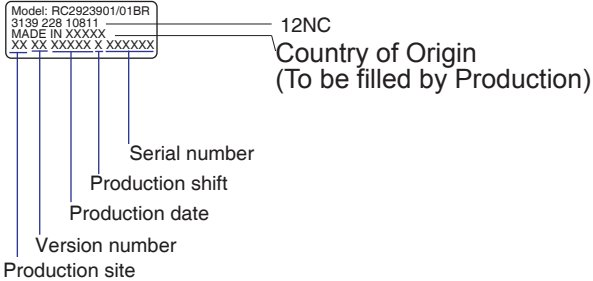


## PRINTING LABEL(3139 235 5409X:30mm\*12mm)

FCC ID: ZQ8RC292A  
 This device complies with part 15 of the FCC Rules. Operation is subject to the following two conditions:  
 (1) This device may not cause harmful interference, and (2) this device must accept any interference received, including interference that may cause undesired operation.

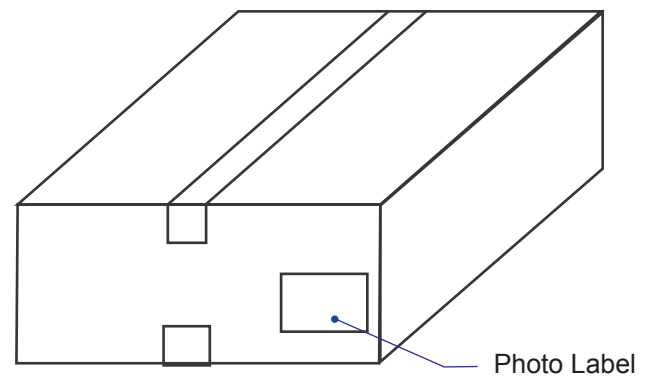


## FACTORY PLATE(3139 225 5089X:20mm x 7.5mm)



## PHOTO LABEL:3139 235 5036X:100mm\*80mm) (BARCODE TO USE:TYPE39)

PART NUMBER <b>3139 228 1081X</b>		Refer to Product Assy 12NC Stated Below for Lastest Point  (The bar code label must be white with black ink. The bleed margin on the label must not be less than 0.25" on all sides.)
(P)		
QUANTITY		
(Q) <b>80</b>		
CIFA#	<b>PHILIPS RCS</b>	
(V) <b>XXXXX</b>	<b>DATE MM/DD/YYYY</b>	
SERIAL	<b>MADE IN CHINA</b>	
(S) <b>XXXXX</b>		



CLASS NO. 3UM810	FINAL EQUIPMENT INSTR. RC2923901/01BR		3139 228 1081	1	
NAME WANG YE HONG	SUPERS XXXX XXX XXXX	1	10	166- 1	A4
DATE 2011-11-23	© KONINKLIJKE PHILIPS ELECTRONICS N.V. 2010				