



Date: 2022/03/01

Federal Communications Commission
Authorization and Evaluation Division
7435 Oakland Mills Road
Columbia, MD 21046

Attn: OET Dept.

Ref: FCC Class II Permissive change for FCC ID: ZPNVS60U029
Original Grant Date: 03/14/2019
Applicant: CUB ELECPARTS INC.

Dear Examiner,

This is to request a Class II permissive change for FCC ID: ZPNVS60U029
, originally granted on 03/14/2019

The major change filed under this application is:
Please see Attachment_ Description of the adjustments

Sincerely yours,



Wing Huang

附件_差異說明

Attachment_ Description of the adjustments

1. 電池更換成新廠商

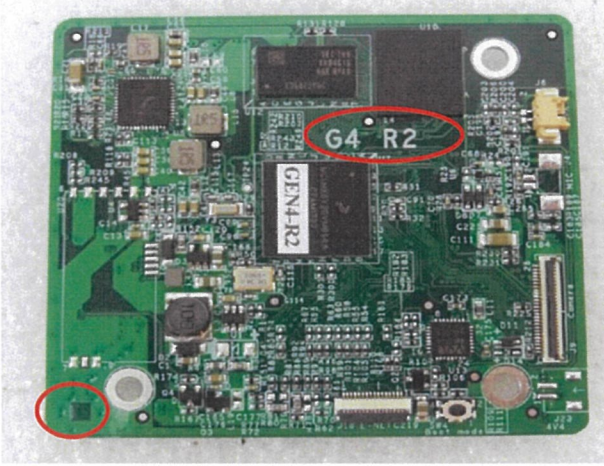

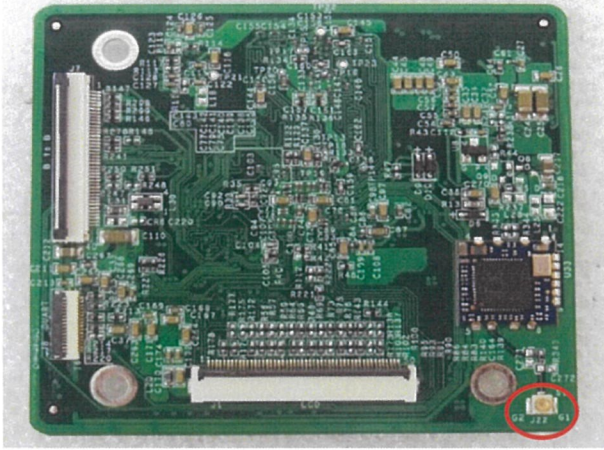
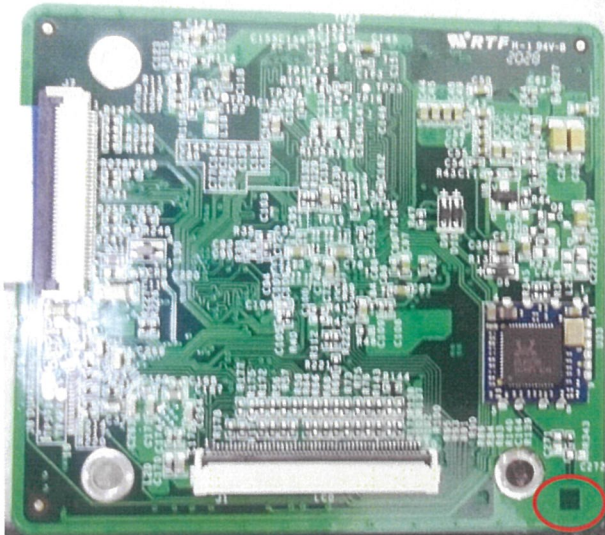
New battery manufacturer

2. OS 版因應製成需求做進版，所以更換天線位置

OS board is updated based on the production requirements. The antenna location is changed.

OS 是指承載主系統底層 Linux

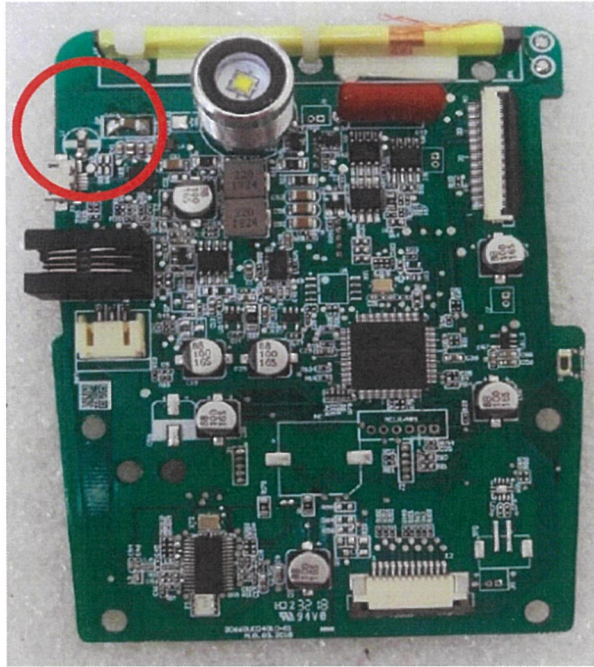
OS refers to the underlying Linux main system

變更前 Before	變更後 After
	
	

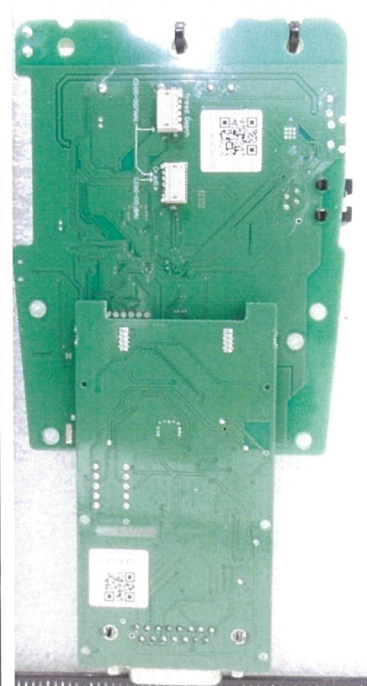
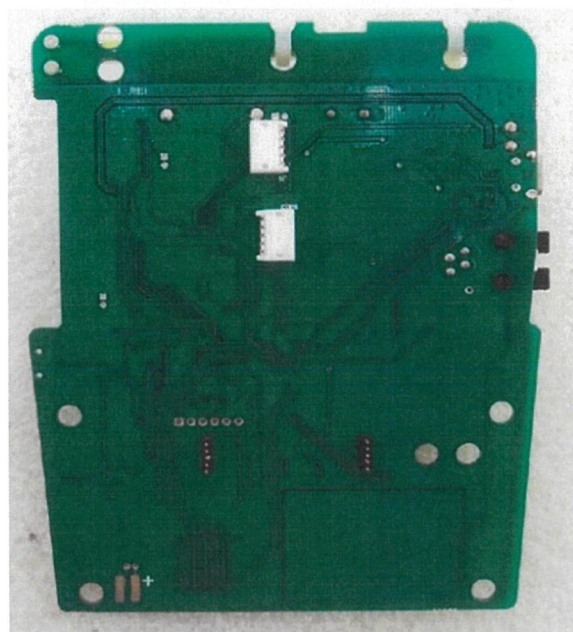
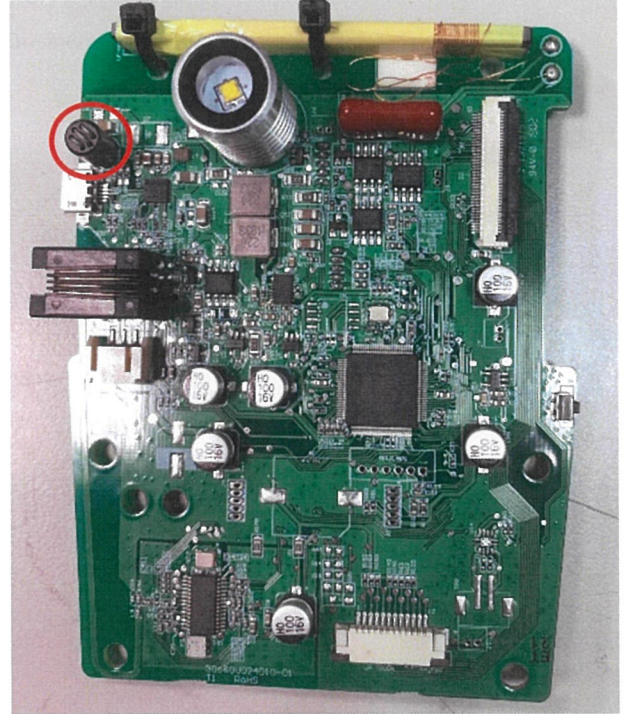
3. 主板更換電容位置&還有增加 ESD 保護元件

Capacitor's location is changed and additional ESD protective units are added on the main board.

變更前 Before

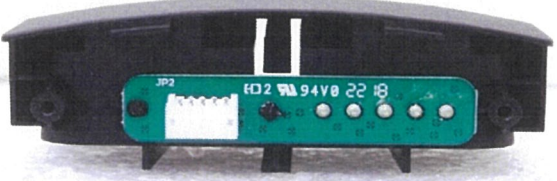
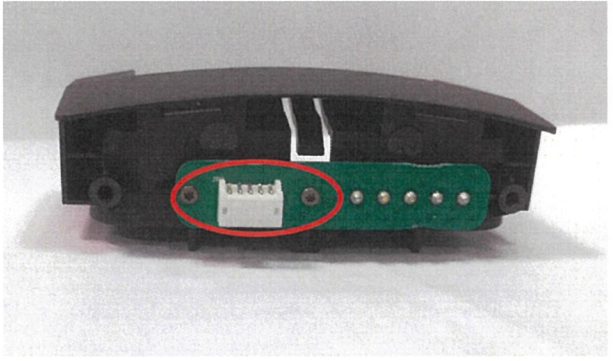


變更後 After



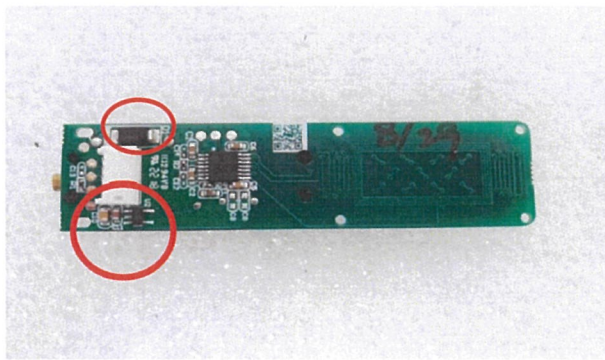
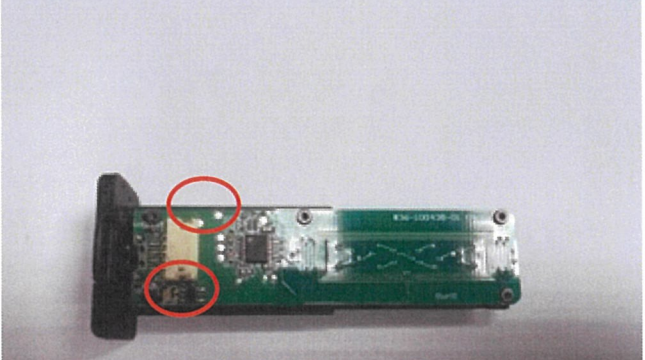
4. 製成改鎖螺絲

Manufacture assembly method is changed into screw fixation.

變更前 Before	變更後 After
	

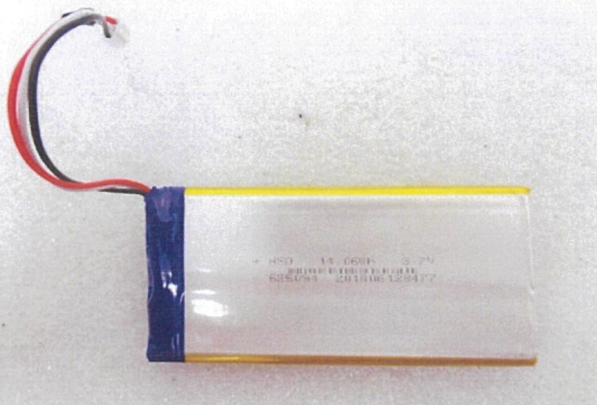
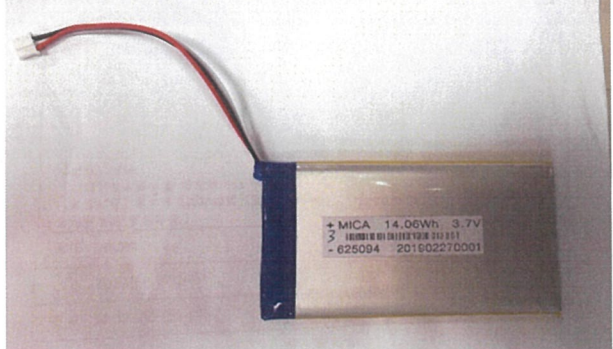
5. 因應工程要求修改連接器(SMD)，有更動元件位置

Based on the manufacture requirements, the components are changed from DIP to SMD.

變更前 Before	變更後 After
	

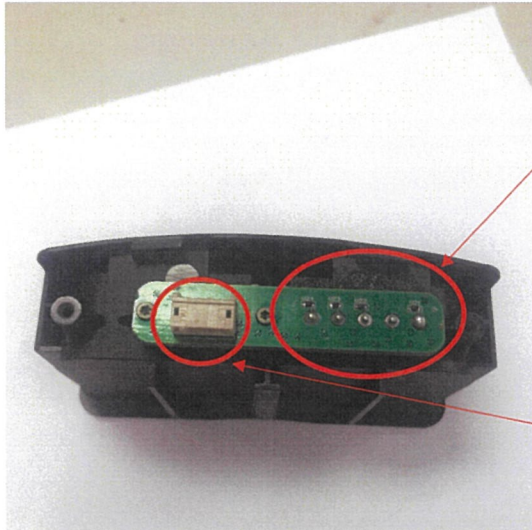
6. 新電池外觀

New battery appearance

變更前 Before	變更後 After
	

7. Cradle PCB 差異

The adjustment of Cradle PCB



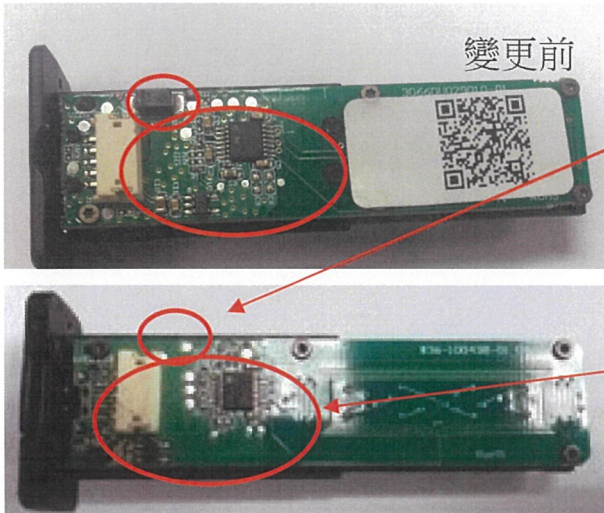
5PIN 旁增加4顆ESD保護元件

4 additional ESD protective units are added next to the 5 PIN

左邊5PIN連接器可以改成SMD,這樣打完件只需焊接燒錄探針

The 5 PIN connector can be changed into SMD so that only programming probes are required to be welded when the PCBA is ready.

8. PCB 差異



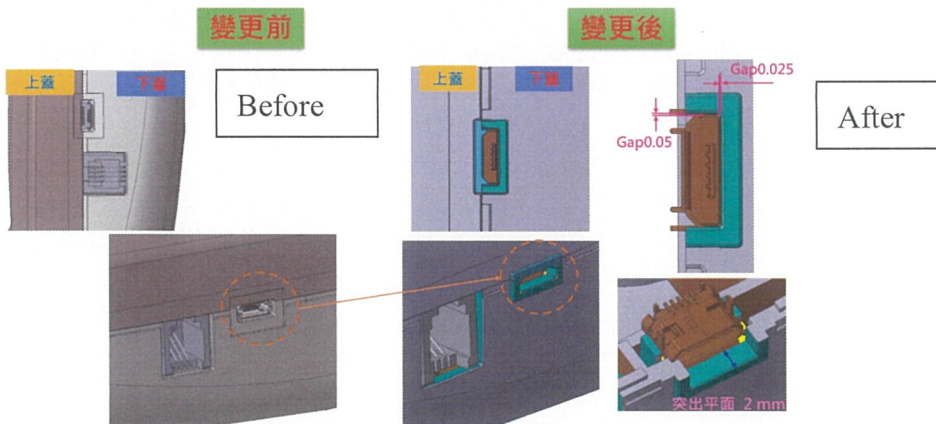
變更前

因應電磁閥取消，拿掉二極體
Diode is removed in accordance to the removal of Solenoid valve.

微調元件位置
The units are slightly relocated.

9. 上下蓋修模差異

The mold differences of the upper and lower lid

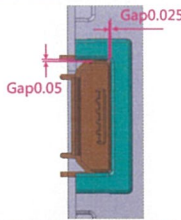


變更前

變更後

Before

After



突出平面 2mm