

jogtek

ISF-001 User's manual

Table of Contents

Chapter 1 – Product overview.....	3
Chapter 2 – Mechanical Characteristics.....	4
Chapter 3 – Software application.....	5
Chapter 4 –Safety Statements.....	6

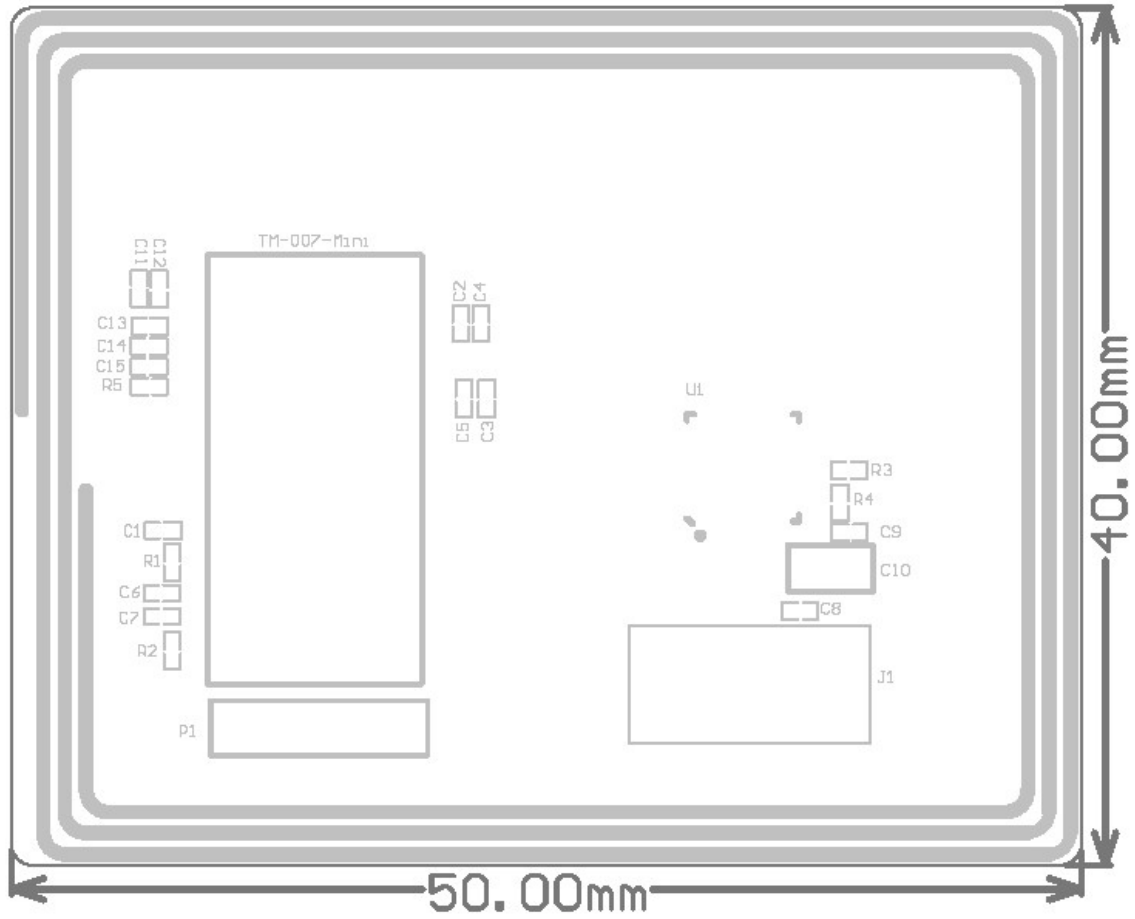
1. Product overview

1. General Description

The ISF-001 is an OEM NFC module for integration into Tablet, Notebook, Smartphone, label printers, handheld devices and in general any fixed or mobile short and medium range device requiring NFC technology. ISF-001 supports Near Field Communication Standards NFCIP-1 (ISO/IEC 18092) and NFCIP-2 (ISO/IEC21481) which defines the selection of any of the four possible communication modes (proximity reader/writer, ISO14443A and Vicinity reader/writer – ISO15693). ISF-001 , Its simplified USB interface, low power consumption and superior performance, make it easy to integrate any device with NFC technology.

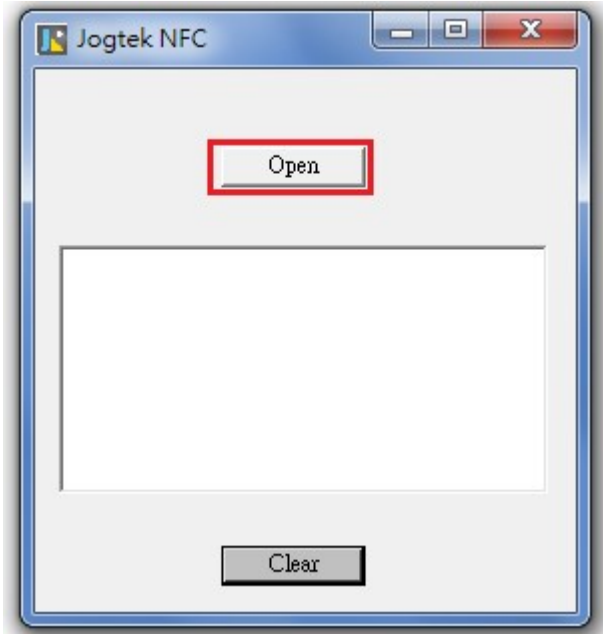
2. Mechanical Characteristics

2.1 Dimensions: 50 x 40 x 4.6 mm

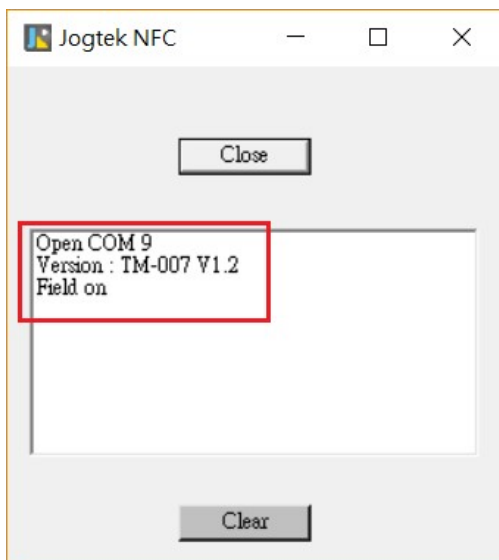


3. Software application

1. Open Program:
2. Enter “open”



3. If the port communication is successful, the window below will display “Version : TM-007 V1.2”.



4. Safety Statements

Federal Communication Commission Interference Statement

This equipment has been tested and found to comply with the limits for a Class B digital device, pursuant to Part 15 of the FCC Rules. These limits are designed to provide reasonable protection against harmful interference in a residential installation. This equipment generates, uses and can radiate radio frequency energy and, if not installed and used in accordance with the instructions, may cause harmful interference to radio communications. However, there is no guarantee that interference will not occur in a particular installation. If this equipment does cause harmful interference to radio or television reception, which can be determined by turning the equipment off and on, the user is encouraged to try to correct the interference by one or more of the following measures:

- Reorient or relocate the receiving antenna.
- Increase the separation between the equipment and receiver.
- Connect the equipment into an outlet on a circuit different from that to which the receiver is connected.
- Consult the dealer or an experienced radio/TV technician for help.

FCC Caution: Any changes or modifications not expressly approved by the party responsible for compliance could void the user's authority to operate this equipment.

This device complies with Part 15 of the FCC Rules. Operation is subject to the following two conditions: (1) This device may not cause harmful interference, and (2) this device must accept any interference received, including interference that may cause undesired operation.

This device and its antenna(s) must not be co-located or operating in conjunction with any other antenna or transmitter.