

FCC TEST REPORT
for
Shenzhen Eastech Co., Ltd.

2.4GHz Wireless Mouse

Model No.: S-1000K, EM-515B, EM-517, EM-3023W, EM-3088W, EM-3129, EM-520

Prepared for : Shenzhen Eastech Co., Ltd.
Address : Block A, Baizhushan Industrial Park, Shajing Street, Bao'an District, Shenzhen City, China

Prepared By : Shenzhen Anbotek Compliance Laboratory Limited
Address : 1/F., Building 1, SEC Industrial Park, No.0409 Qianhai Road, Nanshan District, Shenzhen, Guangdong, China
Tel: (86) 755-26066544
Fax: (86) 755-26014772

Report Number : R011504005E
Date of Test : Apr. 17~ 22, 2015
Date of Report : Apr. 22, 2015

TABLE OF CONTENTS

Description

Page

Test Report

1. GENERAL INFORMATION.....	4
1.1. Description of Device (EUT).....	4
1.2. Auxiliary Equipment Used during Test.....	5
1.3. Description of Test Facility.....	5
1.4. Measurement Uncertainty.....	5
2. TEST PROCEDURE.....	6
3. RADIATION INTERFERENCE.....	7
3.1. Requirements (15.249, 15.209):.....	7
3.2. Test Procedure.....	7
3.3. Test Results.....	7
4. BANDEGE.....	13
4.1. Requirements (15.249):.....	13
4.2. Test Procedure.....	13
4.3. Test Configuration:.....	13
4.4. Test Results.....	14
5. OCCUPIED BANDWIDTH.....	23
5.1. Requirements :.....	23
5.2. Test SET-UP.....	23
5.3 Test Equipment.....	23
5.4. Test Results.....	23
6. ANTENNA APPLICATION.....	26
6.1. Antenna requirement.....	26
6.2. Result.....	26
7. PHOTOGRAPH.....	27
7.1. Photo of Radiation Emission Test.....	27

APPENDIX I (External Photos) (3 Pages)

APPENDIX II (Internal Photos) (2 Pages)

TEST REPORT

Applicant : Shenzhen Eastech Co., Ltd.
Manufacturer : Shenzhen Eastech Co., Ltd.
EUT : 2.4GHz Wireless Mouse
Model No. : S-1000K, EM-515B, EM-517, EM-3023W, EM-3088W, EM-3129, EM-520
Serial No. : N.A.
Trade Mark : N.A.
Rating : DC 3.0V

Measurement Procedure Used:

FCC Part15 Subpart C, Paragraph 15.207, 15.249 & 15.209

The device described above is tested by Shenzhen Anbotek Compliance Laboratory Limited to determine the maximum emission levels emanating from the device and the severe levels of the device can endure and its performance criterion. The measurement results are contained in this test report and Shenzhen Anbotek Compliance Laboratory Limited is assumed full of responsibility for the accuracy and completeness of these measurements. Also, this report shows that the EUT (Equipment Under Test) is technically compliant with the FCC Part 15 Subpart C requirements.

This report applies to above tested sample only and shall not be reproduced in part without written approval of Shenzhen Anbotek Compliance Laboratory Limited.

Date of Test : Apr. 17~ 22, 2015

Prepared by :

Kebo Zhang

(Tested Engineer / Kebo Zhang)

Reviewer :

Amy Ding

(Project Manager / Amy Ding)

Approved & Authorized Signer :

Tom Chen

(Manager / Tom Chen)

1. GENERAL INFORMATION

1.1. Description of Device (EUT)

EUT : 2.4GHz Wireless Mouse

Model Number : S-1000K, EM-515B, EM-517, EM-3023W, EM-3088W, EM-3129, EM-520
(Note: The models are the same except the appearance and model number, so we prepare S-1000K for the EMC test.)

Test Power Supply : DC 3.0V

Frequency : 2408-2474MHz

Channel Space : 2MHz

No. of Channels : 34

Antenna Specification : Printed Antenna:0 dBi

Applicant : Shenzhen Eastech Co., Ltd.
Address : Block A, Baizhushan Industrial Park, Shajing Street, Bao'an District, Shenzhen City, China

Manufacturer : Shenzhen Eastech Co., Ltd.
Address : Block A, Baizhushan Industrial Park, Shajing Street, Bao'an District, Shenzhen City, China

Factory : Shenzhen Eastech Co., Ltd.
Address : Block A, Baizhushan Industrial Park, Shajing Street, Bao'an District, Shenzhen City, China

Date of receipt : Apr. 17, 2015

Date of Test : Apr. 17~ 22, 2015

1.2. Auxiliary Equipment Used during Test

N/A

1.3. Description of Test Facility

The test facility is recognized, certified, or accredited by the following organizations:

CNAS - LAB Code: L3503

Shenzhen Anbotek Compliance Laboratory Limited., Laboratory has been assessed and in compliance with CNAS/CL01: 2006 accreditation criteria for testing laboratories (identical to ISO/IEC 17025:2005 General Requirements) for the Competence of Testing Laboratories.

FCC-Registration No.: 752021

Shenzhen Anbotek Compliance Laboratory Limited, EMC Laboratory has been registered and fully described in a report filed with the (FCC) Federal Communications Commission. The acceptance letter from the FCC is maintained in our files. Registration 752021, July 10, 2013.

IC-Registration No.: 8058A-1

Shenzhen Anbotek Compliance Laboratory Limited., EMC Laboratory has been registered and fully described in a report filed with the (IC) Industry Canada. The acceptance letter from the IC is maintained in our files. Registration 8058A-1, February 22, 2013.

Test Location

All Emissions tests were performed at
Shenzhen Anbotek Compliance Laboratory Limited. at 1/F., Building 1, SEC Industrial Park, No.0409 Qianhai Road, Nanshan District, Shenzhen, Guangdong, China

1.4. Measurement Uncertainty

Radiation Uncertainty	:	Ur = 4.3dB
Conduction Uncertainty	:	Uc = 3.4dB

2. Test Procedure

GENERAL: This report shall NOT be reproduced except in full without the written approval of Shenzhen Anbotek Compliance Laboratory Limited. The EUT was transmitting a test signal during the testing.

RADIATION INTERFERENCE: The test procedure used was ANSI STANDARD C63.10-2013 using a spectrum analyzer with a pre-selector. The analyzer was calibrated in dB above a microvolt at the output of the antenna. The resolution bandwidth was 100KHz and the video bandwidth was 300KHz up to 1.0GHz and 1.0MHz with a video BW of 3.0MHz above 1.0GHz. The ambient temperature of the EUT was 74.3oF with a humidity of 69%.

FORMULA OF CONVERSION FACTORS: The Field Strength at 3m was established by adding the meter reading of the spectrum analyzer (which is set to read in units of dBuV) to the antenna correction factor supplied by the antenna manufacturer. The antenna correction factors are stated in terms of dB. The gain of the Preselector was accounted for in the Spectrum Analyzer Meter Reading.

Example:

Freq (MHz) METER READING + ACF = FS
20 dBuV + 10.36 dB = 30.36 dBuV/m @ 3m

ANSI STANDARD C63.10-2013 10.1.7 MEASUREMENT PROCEDURES: The EUT was placed on a table 80 cm high and with dimensions of 1m by 1.5m. The EUT was placed in the center of the table (1.5m side). The table used for radiated measurements is capable of continuous rotation.

When an emission was found, the table was rotated to produce the maximum signal strength. At this point, the antenna was raised and lowered from 1m to 4m. The antenna was placed in both the horizontal and vertical planes.

3. Radiation Interference

3.1. Requirements (15.249, 15.209):

FIELD STRENGTH of Fundamental: @3M 902-928 MHZ 2.4-2.4835 GHz 94 dBμV/m @3m	FIELD STRENGTH of Harmonics 54 dBμV/m @3m	S15.209 30 - 88 MHz 88 - 216 MHz 216 - 960 MHz ABOVE 960 MHz	40 dBuV/m 43.5 46 54dBuV/m
--------------------------------------------------------------------------------------------	-------------------------------------------------------------	------------------------------------------------------------------------------	-----------------------------------------

Emissions radiated outside of the specified frequency bands, except for harmonics, shall be attenuated by at least 50 dB below the level of the fundamental or to the general radiated emission limits in 15.209, whichever is the lesser attenuation.

3.2. Test Procedure

For below 1GHz, the EUT is placed on a turn table which is 0.8 meter high above the ground. For above 1GHz, the EUT is placed on a turn table which is 1.5 meter high above the ground. The turn table can rotate 360 degrees to determine the position of the maximum emission level. The EUT is set 3 meters away from the receiving antenna which is mounted on a antenna tower. The antenna can be moved up and down from 1 to 4 meters to find out the maximum emission level. Both horizontal and vertical polarization of the antenna are set on test.

All readings from 30MHz to 1GHz are quasi-peak values with a resolution bandwidth of 120kHz. All reading are above 1GHz, peak & average values with a resolution bandwidth of 1MHz. The EUT is tested in 9*6*6 Chamber.

The test results are listed in Section 4.3.

Test Equipment

Item	Equipment	Manufacturer	Model No.	Serial No.	Last Cal.	Cal. Interval
1.	Spectrum Analysis	Agilent	E4407B	US39390582	Apr. 17, 2015	1 Year
2.	Preamplifier	Instruments corporation	EMC011830	980100	Apr. 17, 2015	1 Year
3.	EMI Test Receiver	Rohde & Schwarz	ESPI	101604	Apr. 17, 2015	1 Year
4.	Double Ridged Horn Antenna	Instruments corporation	GTH-0118	351600	Apr. 17, 2015	1 Year
5.	Bilog Broadband Antenna	Schwarzbeck	VULB9163	VULB 9163-289	Apr. 17, 2015	1 Year
6.	Pre-amplifier	SONOMA	310N	186860	Apr. 17, 2015	1 Year
7.	EMI Test Software EZ-EMC	SHURPLE	N/A	N/A	N/A	N/A

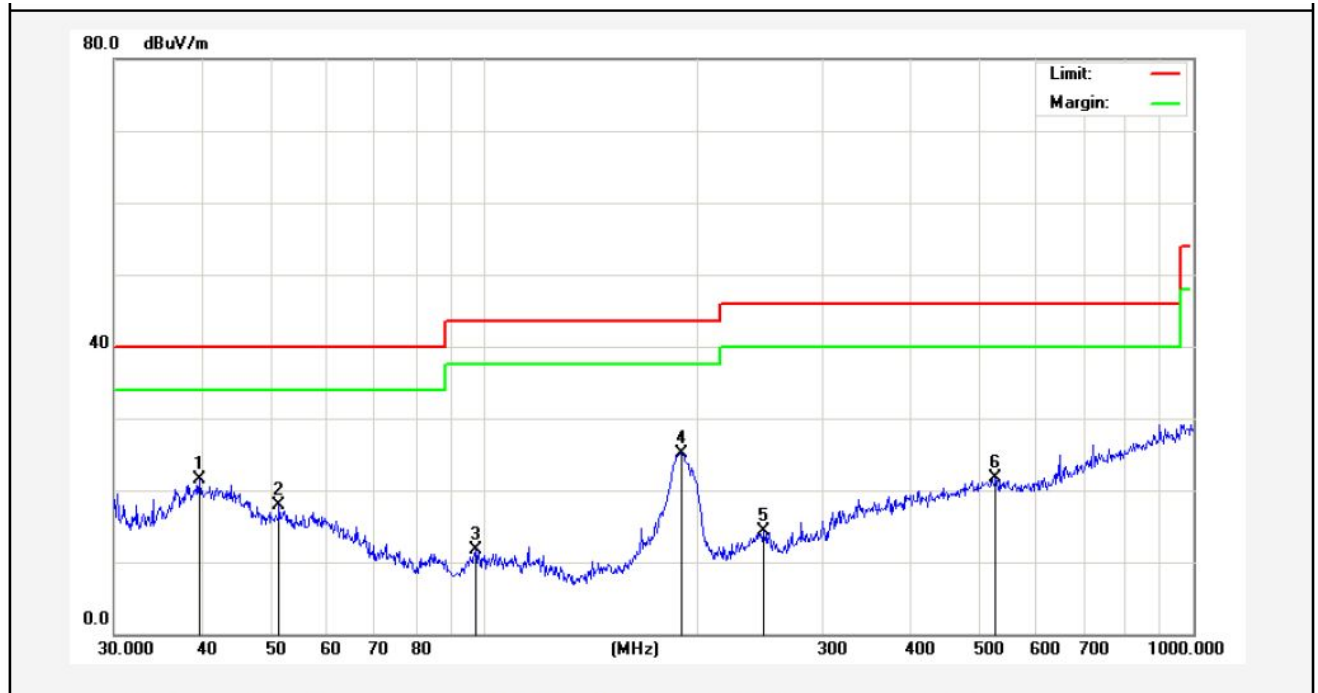
3.3. Test Results

PASS.

Please refer the following pages.

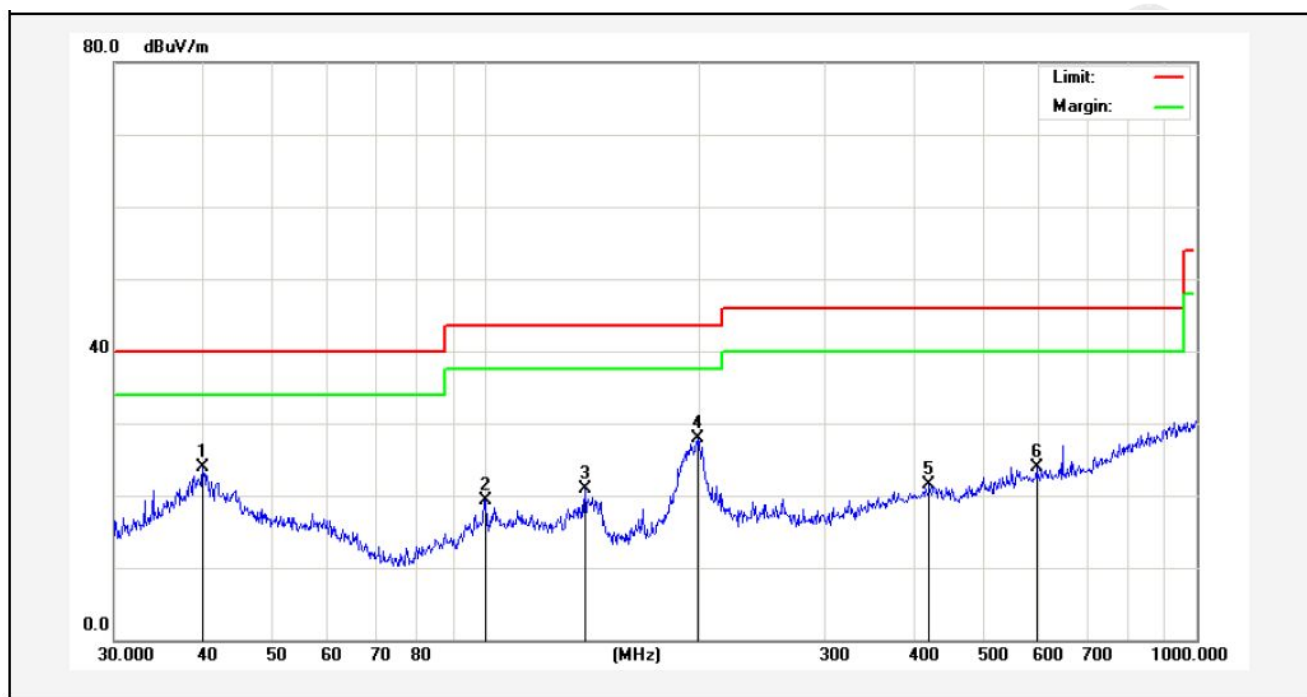
Below 1GHz:

Job No.:	011504005E	Polarziation:	Horizontal
Standard:	(RE)FCC PART15 C _3m	Power Source:	DC 3.0V
Test item:	Radiation Test	Temp.(C)/Hum.(%RH):	24.3(C)/55%RH
Mode:	ON	Distance:	3m
Note:	30-1000MHz		



No.	Freq. (MHz)	Reading (dBuV/m)	Factor (dB/m)	Result (dBuV/m)	Limit (dBuV/)	Over Limit (dB)	Detector	Height (cm)	degree (deg)	Remark
1	39.5757	32.18	-10.70	21.48	40.00	-18.52	peak			
2	51.3005	32.48	-14.66	17.82	40.00	-22.18	peak			
3	97.1148	32.57	-20.91	11.66	43.50	-31.84	peak			
4	189.7385	46.07	-20.95	25.12	43.50	-18.38	peak			
5	247.6819	32.82	-18.44	14.38	46.00	-31.62	peak			
6	526.3967	32.82	-11.03	21.79	46.00	-24.21	peak			

Job No.: 011504005E Polarization: Vertical
Standard: (RE)FCC PART15 C _3m Power Source: DC 3.0V
Test item: Radiation Test Temp.(C)/Hum.(%RH): 24.3(C)/55%RH
Mode: ON Distance: 3m
Note: 30-1000MHz



No.	Freq. (MHz)	Reading (dBuV/m)	Factor (dB/m)	Result (dBuV/m)	Limit (dBuV/)	Over Limit (dB)	Detector	Height (cm)	degree (deg)	Remark
1	39.9942	34.21	-10.37	23.84	40.00	-16.16	peak			
2	99.8777	35.15	-15.78	19.37	43.50	-24.13	peak			
3	137.9028	39.18	-18.34	20.84	43.50	-22.66	peak			
4	198.5880	43.81	-15.88	27.93	43.50	-15.57	peak			
5	420.5803	32.84	-11.28	21.56	46.00	-24.44	peak			
6	595.1329	33.18	-9.32	23.86	46.00	-22.14	peak			

Above 1 GHz:

Horizontal CH Low (2408MHz)								
Frequency MHz	Cable Loss dB	Ant Factor dB/m	Preamp Factor dB	Read Level dBμV	Level dBμV/m	Limit dBμV/m	Over Limit dB	Remark
2408.000	2.17	31.21	35.30	89.36	87.44	114.0	-26.56	Peak
2408.000	2.17	31.21	35.30	78.15	76.23	94.0	-17.77	AV
4816.310	2.56	34.01	34.71	49.67	51.53	74.0	-22.47	Peak
4816.310	2.56	34.01	34.71	38.19	40.05	54.0	-13.95	AV
7224.520	2.98	36.16	35.15	46.51	50.5	74.0	-23.5	Peak
7224.520	2.98	36.16	35.15	29.39	33.38	54.0	-20.62	AV
9632.000	---	---	---	---	---	---	---	---
12040.00	---	---	---	---	---	---	---	---
14448.00	---	---	---	---	---	---	---	---
16856.00	---	---	---	---	---	---	---	---
---		.						

Vertical CH Low (2408MHz)								
Frequency MHz	Cable Loss dB	Ant Factor dB/m	Preamp Factor dB	Read Level dBμV	Level dBμV/m	Limit dBμV/m	Over Limit dB	Remark
2408.000	2.17	31.21	35.30	91.25	89.33	114.0	-24.67	Peak
2408.000	2.17	31.21	35.30	81.44	79.52	94.0	-14.48	AV
4816.310	2.56	34.01	34.71	45.39	47.25	74.0	-26.75	Peak
4816.310	2.56	34.01	34.71	37.19	39.05	54.0	-14.95	AV
7224.520	2.98	36.16	35.15	40.55	44.54	74.0	-29.46	Peak
7224.520	2.98	36.16	35.15	34.12	38.11	54.0	-15.89	AV
9632.000	---	---	---	---	---	---	---	---
12040.00	---	---	---	---	---	---	---	---
14448.00	---	---	---	---	---	---	---	---
16856.00	---	---	---	---	---	---	---	---

Horizontal CH Middle (2440MHz)								
Frequency MHz	Cable Loss dB	Ant Factor dB/m	Preamp Factor dB	Read Level dBμV	Level dBμV/m	Limit dBμV/m	Over Limit dB	Remark
2440.000	2.19	31.22	34.60	90.59	89.4	114.0	-24.6	Peak
2440.000	2.19	31.22	34.60	79.33	78.14	94.0	-15.86	AV
4880.160	2.57	35.00	34.58	46.29	49.28	74.0	-24.72	Peak
4880.160	2.57	35.00	34.58	35.87	38.86	54.0	-15.14	AV
7320.230	3.00	36.17	35.14	41.15	45.18	74.0	-28.82	Peak
7320.230	3.00	36.17	35.14	34.03	38.06	54.0	-15.94	AV
9760.000	---	---	---	---	---	---	---	---
12200.00	---	---	---	---	---	---	---	---
14640.00	---	---	---	---	---	---	---	---
17080.00	---	---	---	---	---	---	---	---
---	---	---	---	---	---	---	---	---

Vertical CH Middle (2440MHz)								
Frequency MHz	Cable Loss dB	Ant Factor dB/m	Preamp Factor dB	Read Level dBμV	Level dBμV/m	Limit dBμV/m	Over Limit dB	Remark
2440.000	2.19	31.22	34.60	91.88	90.69	114.0	-23.31	Peak
2440.000	2.19	31.22	34.60	78.61	77.42	94.0	-16.58	AV
4880.110	2.57	35.00	34.58	49.35	52.34	74.0	-21.66	Peak
4880.110	2.57	35.00	34.58	40.77	43.76	54.0	-10.24	AV
7320.350	3.00	36.17	35.14	45.04	49.07	74.0	-24.93	Peak
7320.350	3.00	36.17	35.14	38.21	42.24	54.0	-11.76	AV
9760.000	---	---	---	---	---	---	---	---
12200.00	---	---	---	---	---	---	---	---
14640.00	---	---	---	---	---	---	---	---
17080.00	---	---	---	---	---	---	---	---
---	---	---	---	---	---	---	---	---

Horizontal CH High (2474MHz)								
Frequency MHz	Cable Loss dB	Ant Factor dB/m	Preamp Factor dB	Read Level dBμV	Level dBμV/m	Limit dBμV/m	Over Limit dB	Remark
2474.000	2.20	31.65	36.00	91.87	89.72	114.0	-24.28	Peak
2474.000	2.20	31.65	36.00	82.05	79.9	94.0	-14.1	AV
4948.410	2.58	35.06	34.79	46.37	49.22	74.0	-24.78	Peak
4948.410	2.58	35.06	34.79	40.59	43.44	54.0	-10.56	AV
7422.750	3.02	36.19	34.90	46.21	50.52	74.0	-23.48	Peak
7422.750	3.02	36.20	35.20	38.79	42.81	54.0	-11.19	AV
9896.000	---	---	---	---	---	---	---	---
12370.00	---	---	---	---	---	---	---	---
14844.00	---	---	---	---	---	---	---	---
17318.00	---	---	---	---	---	---	---	---
---	---	---	---	---	---	---	---	---

Vertical CH High (2474MHz)								
Frequency MHz	Cable Loss dB	Ant Factor dB/m	Preamp Factor dB	Read Level dBμV	Level dBμV/m	Limit dBμV/m	Over Limit dB	Remark
2474.000	2.20	31.65	36.00	94.18	92.03	114.0	-21.97	Peak
2474.000	2.20	31.65	36.00	80.36	78.21	94.0	-15.79	AV
4948.410	2.58	35.06	34.79	47.25	50.1	74.0	-23.9	Peak
4948.410	2.58	35.06	34.79	40.03	42.88	54.0	-11.12	AV
7422.750	3.02	36.19	34.90	44.79	49.1	74.0	-24.9	Peak
7422.750	3.02	36.20	35.20	40.25	44.27	54.0	-9.73	AV
9896.000	---	---	---	---	---	---	---	---
12370.00	---	---	---	---	---	---	---	---
14844.00	---	---	---	---	---	---	---	---
17318.00	---	---	---	---	---	---	---	---
---	---	---	---	---	---	---	---	---

NOTE: “ --- ” in the table above means the reading of emissions are attenuated more than 20dB below the permissible limits or the field strength is too small to be measured. The results of different modulations are the same.

4. Bandedge

4.1. Requirements (15.249):

The field strength of any emissions appearing outside the band edges and up to 10 kHz above and below the band edges shall be attenuated at least 50 dB below the level of the carrier or to the general limits of 15.249.

4.2. Test Procedure

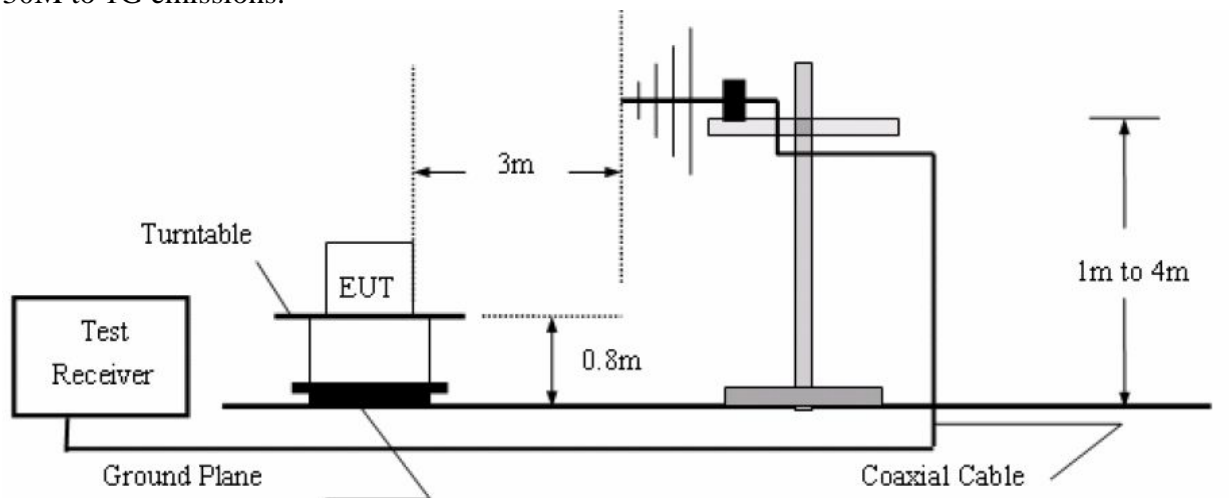
The EUT is placed on a turn table which is 0.8 meter high above the ground. The turn table can rotate 360 degrees to determine the position of the maximum emission level. The EUT is set 3 meters away from the receiving antenna which is mounted on a antenna tower. The antenna can be moved up and down from 1 to 4 meters to find out the maximum emission level. Both horizontal and vertical polarization of the antenna are set on test.

Test Equipment

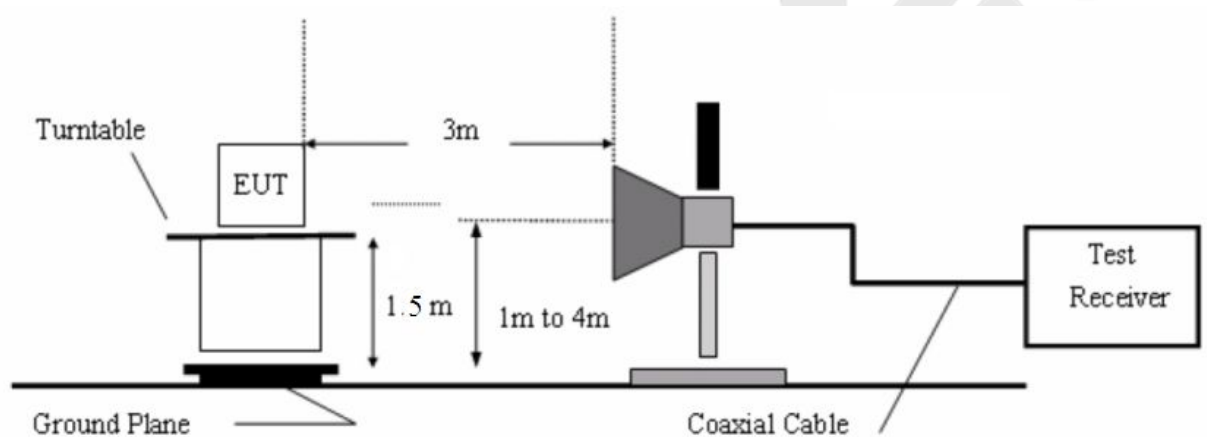
Item	Equipment	Manufacturer	Model No.	Serial No.	Last Cal.	Cal. Interval
1.	Spectrum Analysis	Agilent	E4407B	US39390582	Apr. 17, 2015	1 Year
2.	Preamplifier	Instruments corporation	EMC011830	980100	Apr. 17, 2015	1 Year
3.	EMI Test Receiver	Rohde & Schwarz	ESPI	101604	Apr. 17, 2015	1 Year
4.	Double Ridged Horn Antenna	Instruments corporation	GTH-0118	351600	Apr. 17, 2015	1 Year
5.	Bilog Broadband Antenna	Schwarzbeck	VULB9163	VULB 9163-289	Apr. 17, 2015	1 Year
6.	Pre-amplifier	SONOMA	310N	186860	Apr. 17, 2015	1 Year
7.	EMI Test Software EZ-EMC	SHURPLE	N/A	N/A	N/A	N/A

4.3. Test Configuration:

30M to 1G emissions:



1G to 40G emissions:

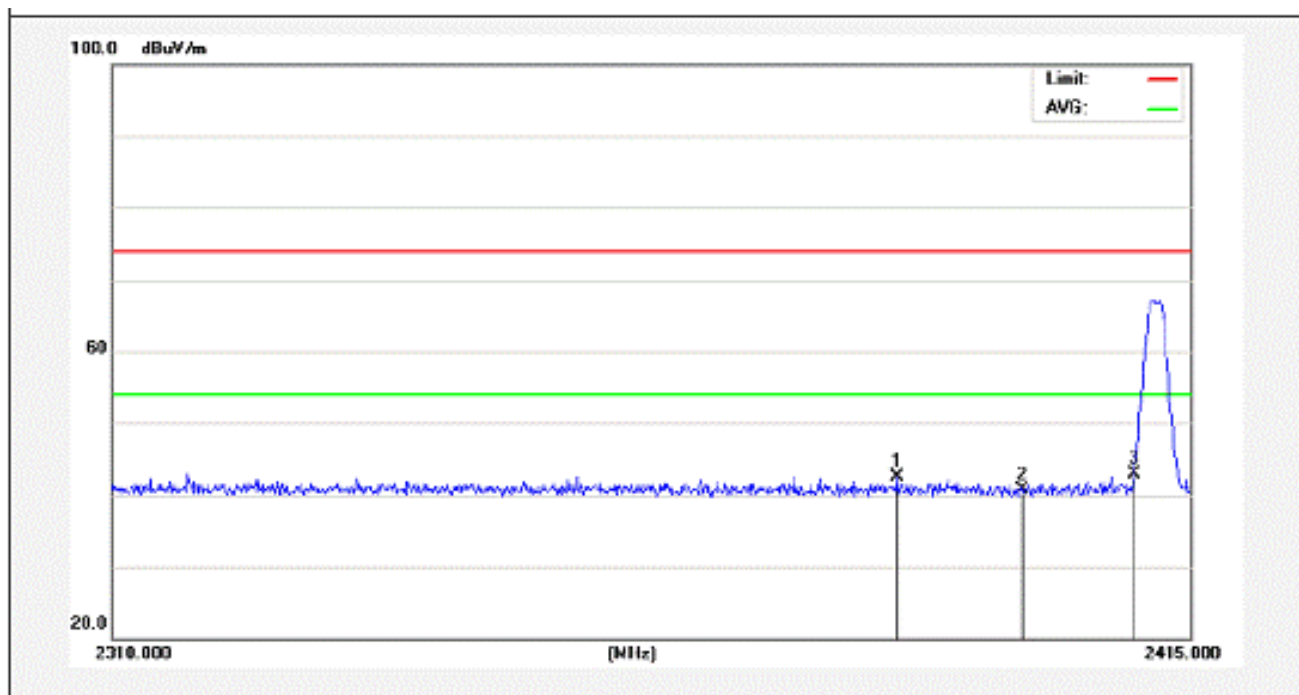


4.4. Test Results

Pass.

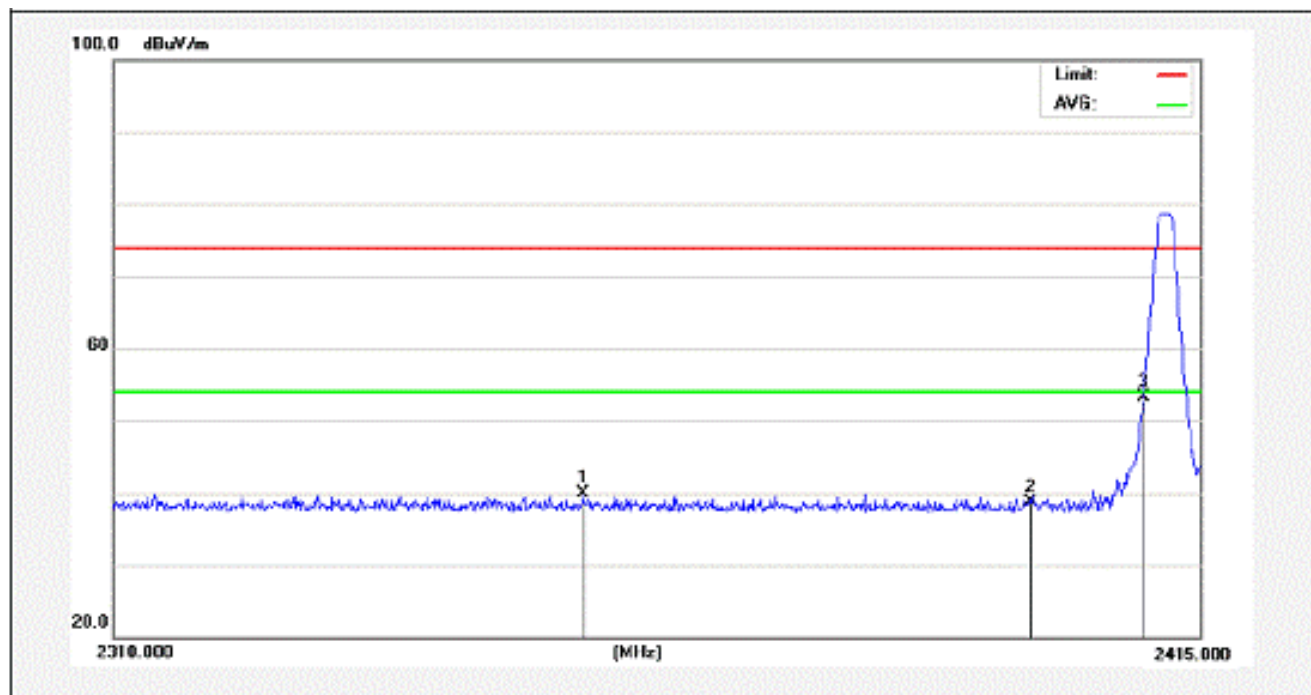
Please refer the following plot.

Job No.:	011504005E	Polarization:	Horizontal
Standard:	(RE)FCC PART15 C _3m	Power Source:	DC 3.0V
Test item:	Radiation Test	Temp.(C)/Hum.(%RH):	24.3(C)/55%RH
Note:	PEAK	Distance:	3m



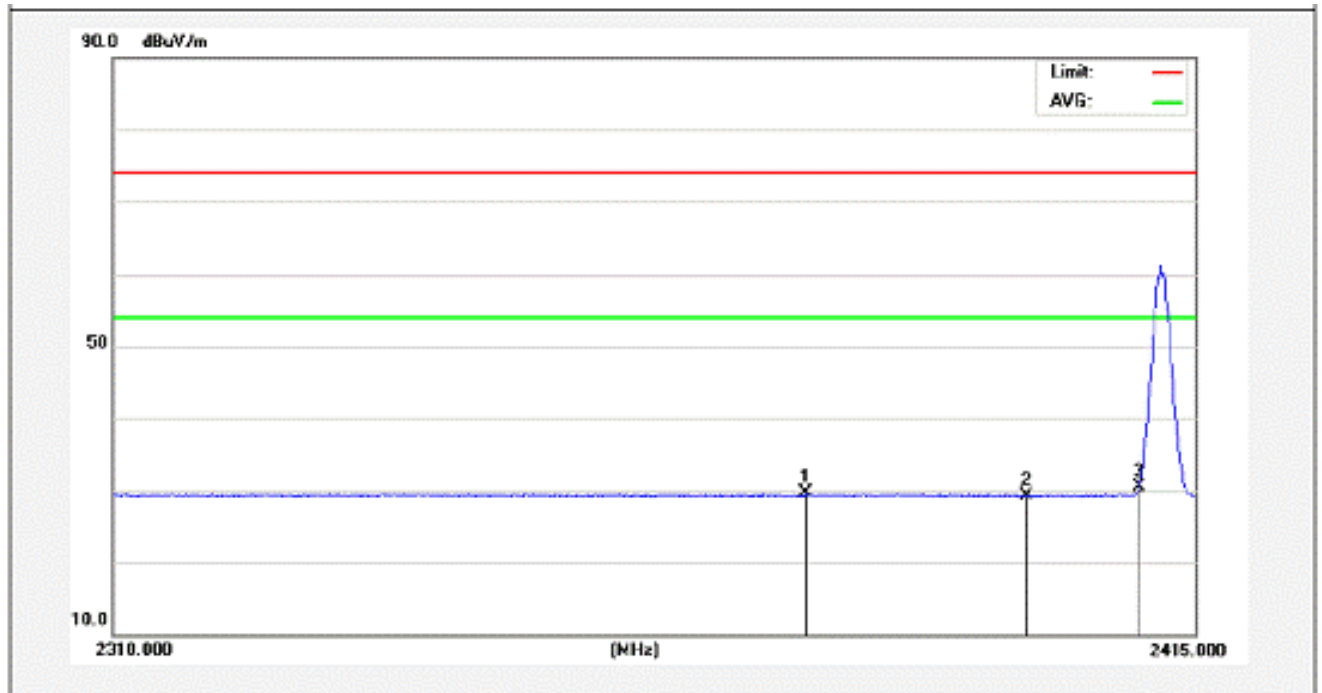
No.	Freq. (MHz)	Reading (dBuV/m)	Factor (dB/m)	Result (dBuV/m)	Limit (dBuV/)	Over Limit (dB)	Detector	Height (cm)	degree (deg)	Remark
1	2378.875	40.23	2.22	42.45	74.00	-31.55	peak			
2	2390.000	38.47	2.22	40.69	74.00	-33.31	peak			
3	2400.000	40.78	2.21	42.99	74.00	-31.01	peak			

Job No.:	011504005E	Polarization:	Vertical
Standard:	(RE)FCC PART15 C _3m	Power Source:	DC 3.0V
Test item:	Radiation Test	Temp.(C)/Hum.(%RH):	24.3(C)/55%RH
Note:	PEAK	Distance:	3m



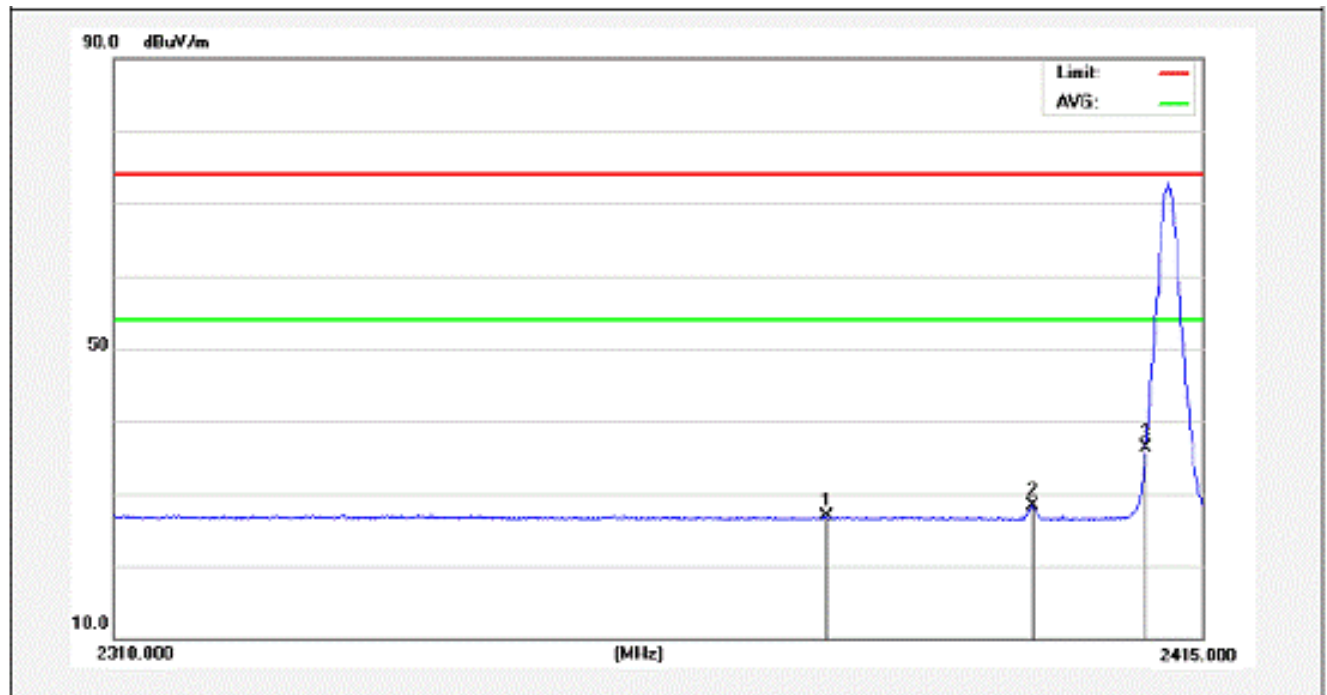
No.	Freq. (MHz)	Reading (dBuV/m)	Factor (dB/m)	Result (dBuV/m)	Limit (dBuV/)	Over Limit (dB)	Detector	Height (cm)	degree (deg)	Remark
1	2350.660	40.33	-0.38	39.95	74.00	-34.05	peak			
2	2390.000	39.25	-0.46	38.79	74.00	-35.21	peak			
3	2400.000	53.72	-0.49	53.23	74.00	-20.77	peak			

Job No.:	011504005E	Polarization:	Horizontal
Standard:	(RE)FCC PART15 C _3m	Power Source:	DC 3.0V
Test item:	Radiation Test	Temp.(C)/Hum.(%RH):	24.3(C)/55%RH
Note:	AV	Distance:	3m



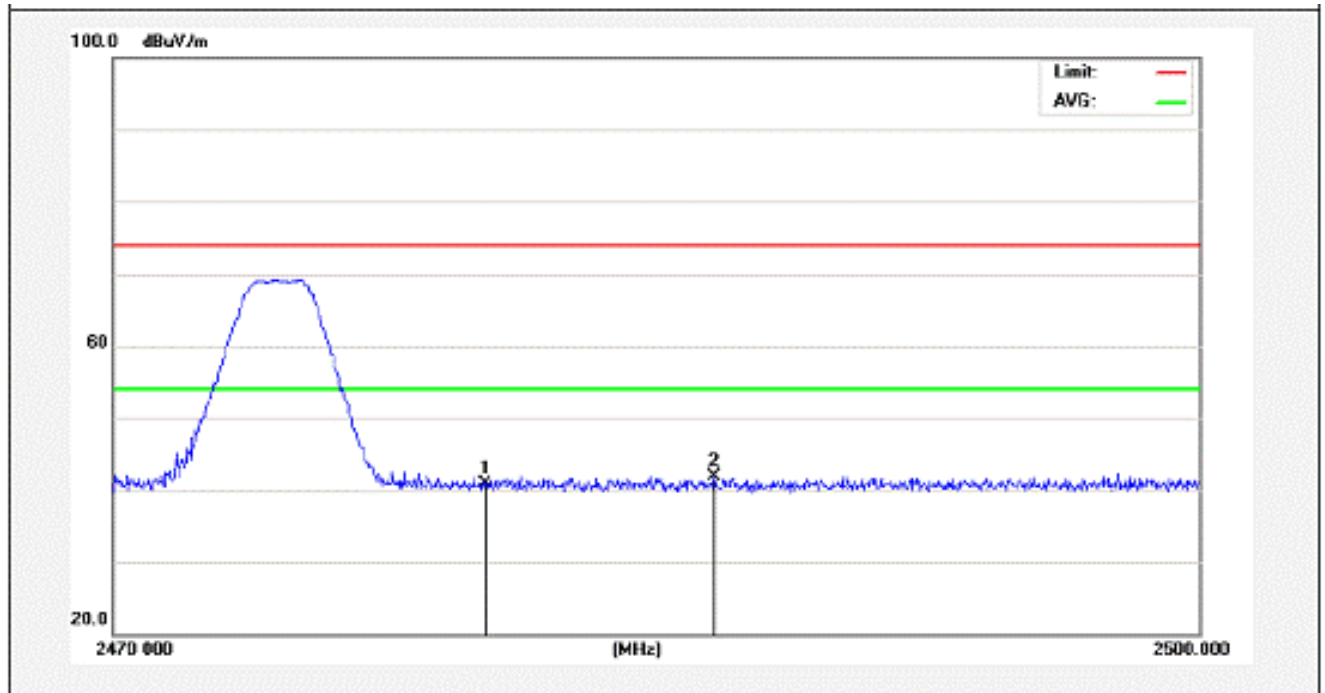
No.	Freq. (MHz)	Reading (dBuV/m)	Factor (dB/m)	Result (dBuV/m)	Limit (dBuV/)	Over Limit (dB)	Detector	Height (cm)	degree (deg)	Remark
1	2370.420	27.42	2.21	29.63	54.00	-24.37	AVG			
2	2390.000	27.02	2.22	29.24	54.00	-24.76	AVG			
3	2400.000	28.21	2.21	30.42	54.00	-23.58	AVG			

Job No.:	011504005E	Polarization:	Vertical
Standard:	(RE)FCC PART15 C _3m	Power Source:	DC 3.0V
Test item:	Radiation Test	Temp.(C)/Hum.(%RH):	24.3(C)/55%RH
Note:	AV	Distance:	3m



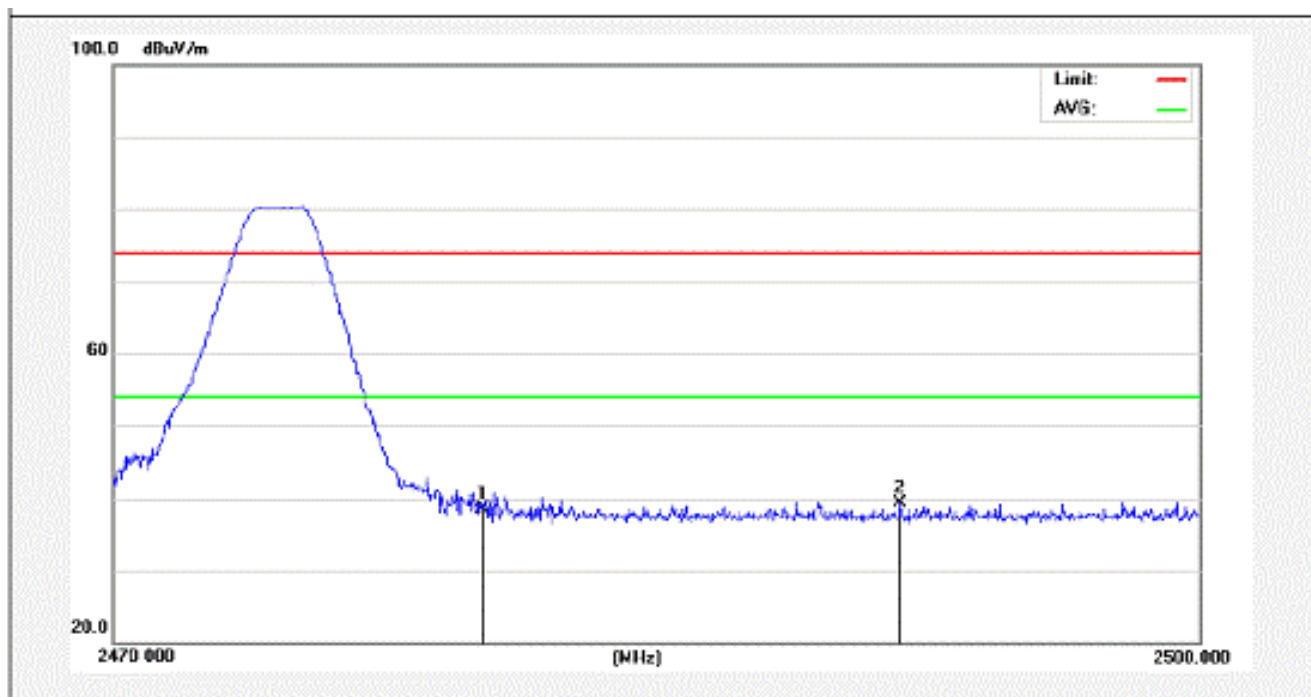
No.	Freq. (MHz)	Reading (dBuV/m)	Factor (dB/m)	Result (dBuV/m)	Limit (dBuV/	Over Limit (dB)	Detector	Height (cm)	degree (deg)	Remark
1	2371.845	27.36	-0.43	26.93	54.00	-27.07	AVG			
2	2390.000	28.84	-0.46	28.38	54.00	-25.62	AVG			
3	2400.000	36.80	-0.49	36.31	54.00	-17.69	AVG			

Job No.:	011504005E	Polarization:	Horizontal
Standard:	(RE)FCC PART15 C _3m	Power Source:	DC 3.0V
Test item:	Radiation Test	Temp.(C)/Hum.(%RH):	24.3(C)/55%RH
Note:	PEAK	Distance:	3m



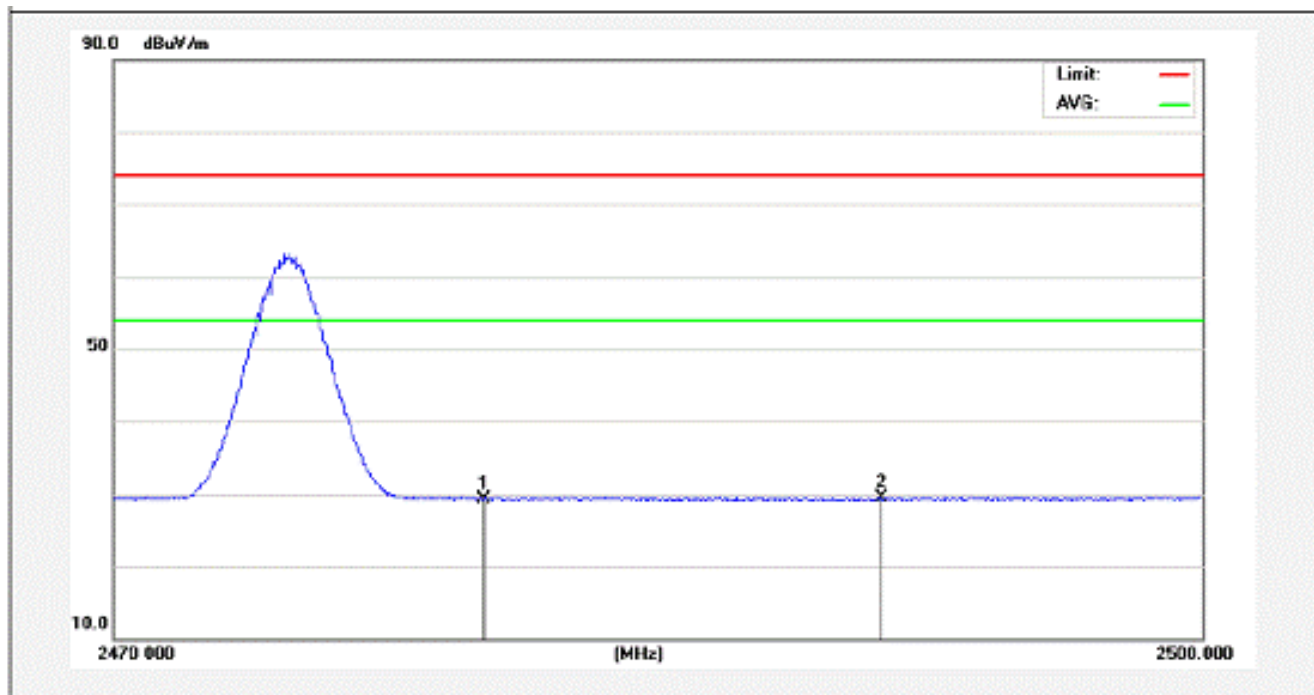
No.	Freq. (MHz)	Reading (dBuV/m)	Factor (dB/m)	Result (dBuV/m)	Limit (dBuV/)	Over Limit (dB)	Detector	Height (cm)	degree (deg)	Remark
1	2483.500	38.75	2.20	40.95	74.00	-33.05	peak			
2	2488.825	39.69	2.20	41.89	74.00	-32.11	peak			

Job No.:	011504005E	Polarization:	Vertical
Standard:	(RE)FCC PART15 C _3m	Power Source:	DC 3.0V
Test item:	Radiation Test	Temp.(C)/Hum.(%RH):	24.3(C)/55%RH
Note:	PEAK	Distance:	3m



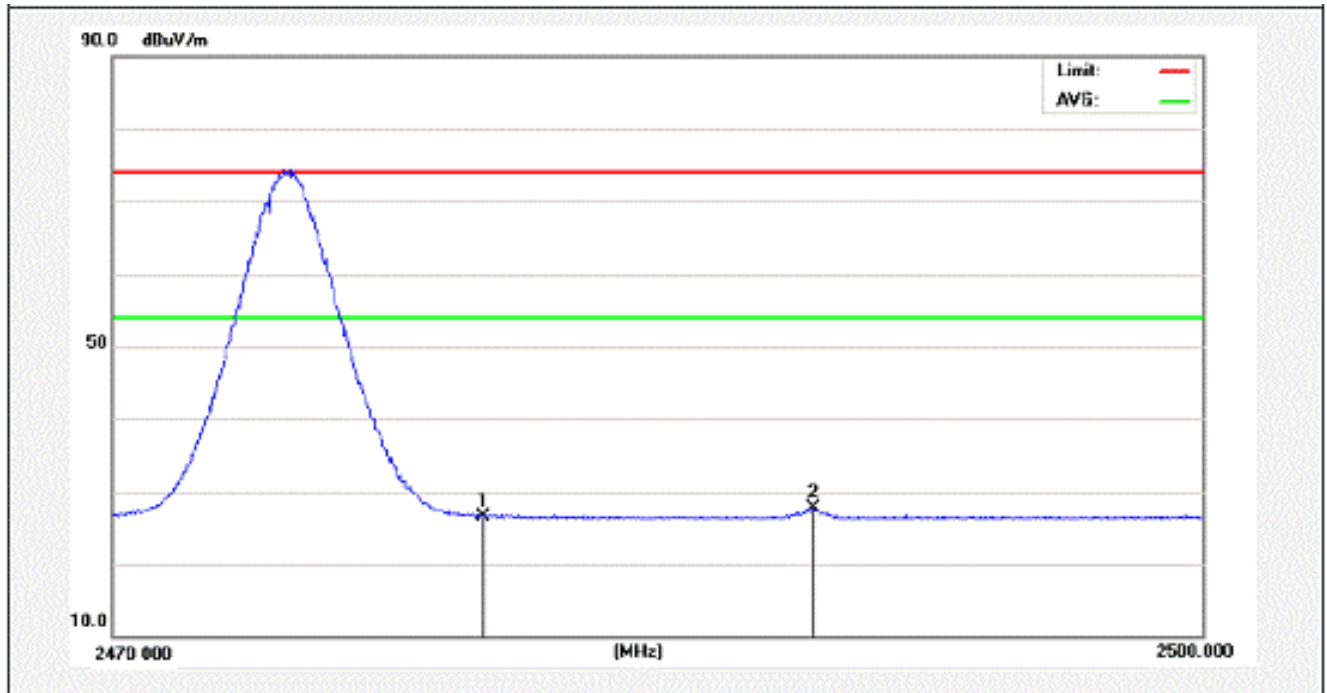
No.	Freq. (MHz)	Reading (dBuV/m)	Factor (dB/m)	Result (dBuV/m)	Limit (dBuV/)	Over Limit (dB)	Detector	Height (cm)	degree (deg)	Remark
1	2483.500	39.27	-0.67	38.60	74.00	-35.40	peak			
2	2493.100	40.03	-0.69	39.34	74.00	-34.66	peak			

Job No.:	011504005E	Polarization:	Horizontal
Standard:	(RE)FCC PART15 C _3m	Power Source:	DC 3.0V
Test item:	Radiation Test	Temp.(C)/Hum.(%RH):	24.3(C)/55%RH
Note:	AV	Distance:	3m



No.	Freq. (MHz)	Reading (dBuV/m)	Factor (dB/m)	Result (dBuV/m)	Limit (dBuV/)	Over Limit (dB)	Detector	Height (cm)	degree (deg)	Remark
1	2483.500	27.16	2.20	29.36	54.00	-24.64	AVG			
2	2492.625	27.39	2.20	29.59	54.00	-24.41	AVG			

Job No.:	011504005E	Polarization:	Vertical
Standard:	(RE)FCC PART15 C _3m	Power Source:	DC 3.0V
Test item:	Radiation Test	Temp.(C)/Hum.(%RH):	24.3(C)/55%RH
Note:	AV	Distance:	3m



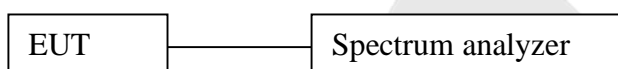
No.	Freq. (MHz)	Reading (dBuV/m)	Factor (dB/m)	Result (dBuV/m)	Limit (dBuV/	Over Limit (dB)	Detector	Height (cm)	degree (deg)	Remark
1	2483.500	27.11	-0.67	26.44	54.00	-27.56	AVG			
2	2491.050	28.39	-0.68	27.71	54.00	-26.29	AVG			

5. Occupied Bandwidth

5.1. Requirements :

According to 15.215 (c), intentional radiators operating under the alternative provisions to the general emission limits, as contained in §§15.217 through 15.257 and in Subpart E of this part, must be designed to ensure that the 20 dB bandwidth of the emission, or whatever bandwidth may otherwise be specified in the specific rule section under which the equipment operates, is contained within the frequency band designated in the rule section under which the equipment is operated. The requirement to contain the designated bandwidth of the emission within the specified frequency band includes the effects from frequency sweeping, frequency hopping and other modulation techniques that may be employed as well as the frequency stability of the transmitter over expected variations in temperature and supply voltage. If a frequency stability is not specified in the regulations, it is recommended that the fundamental emission be kept within at least the central 80% of the permitted band in order to minimize the possibility of out-of-band operation.

5.2. Test SET-UP



5.3 Test Equipment

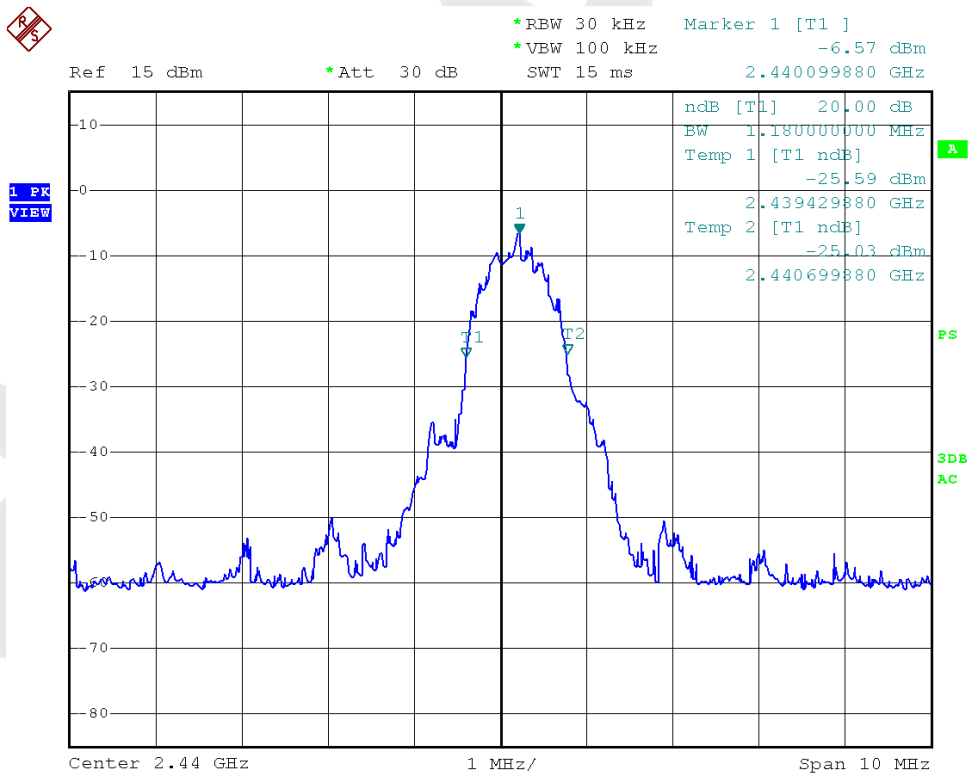
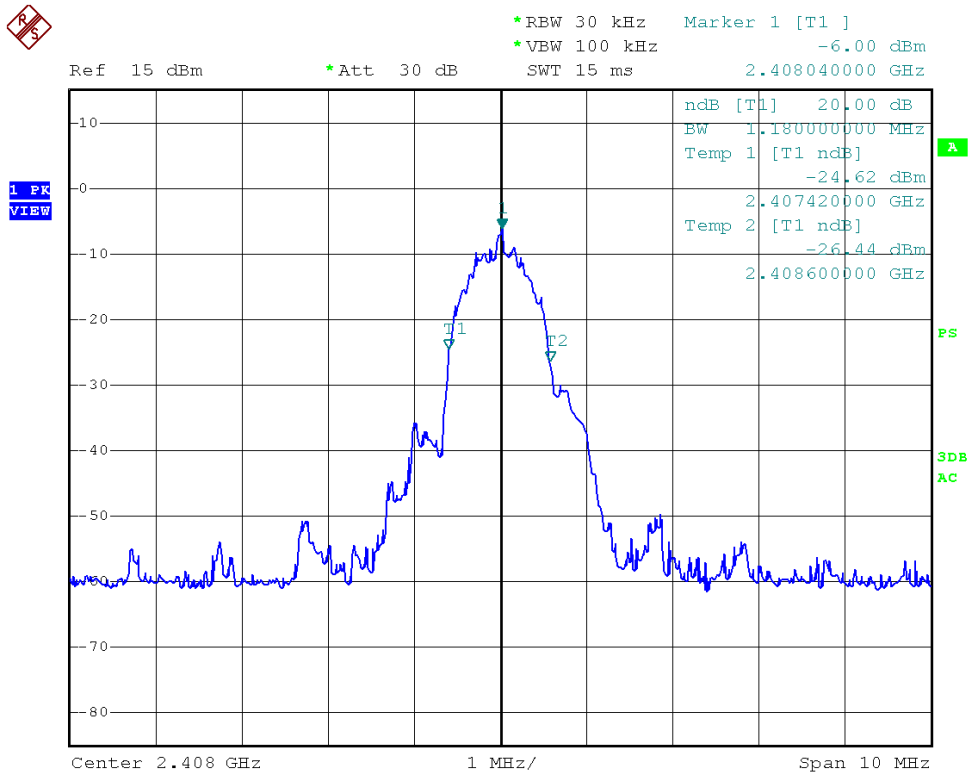
Item	Equipment	Manufacturer	Model No.	Serial No.	Last Cal.	Cal. Interval
1.	Spectrum Analysis	Agilent	E4407B	US39390582	Apr. 17, 2015	1 Year
2.	Preamplifier	Instruments corporation	EMC011830	980100	Apr. 17, 2015	1 Year
3.	EMI Test Receiver	Rohde & Schwarz	ESPI	101604	Apr. 17, 2015	1 Year
4.	Double Ridged Horn Antenna	Instruments corporation	GTH-0118	351600	Apr. 17, 2015	1 Year
5.	Bilog Broadband Antenna	Schwarzbeck	VULB9163	VULB 9163-289	Apr. 17, 2015	1 Year
6.	Pre-amplifier	SONOMA	310N	186860	Apr. 17, 2015	1 Year
7.	EMI Test Software EZ-EMC	SHURPLE	N/A	N/A	N/A	N/A

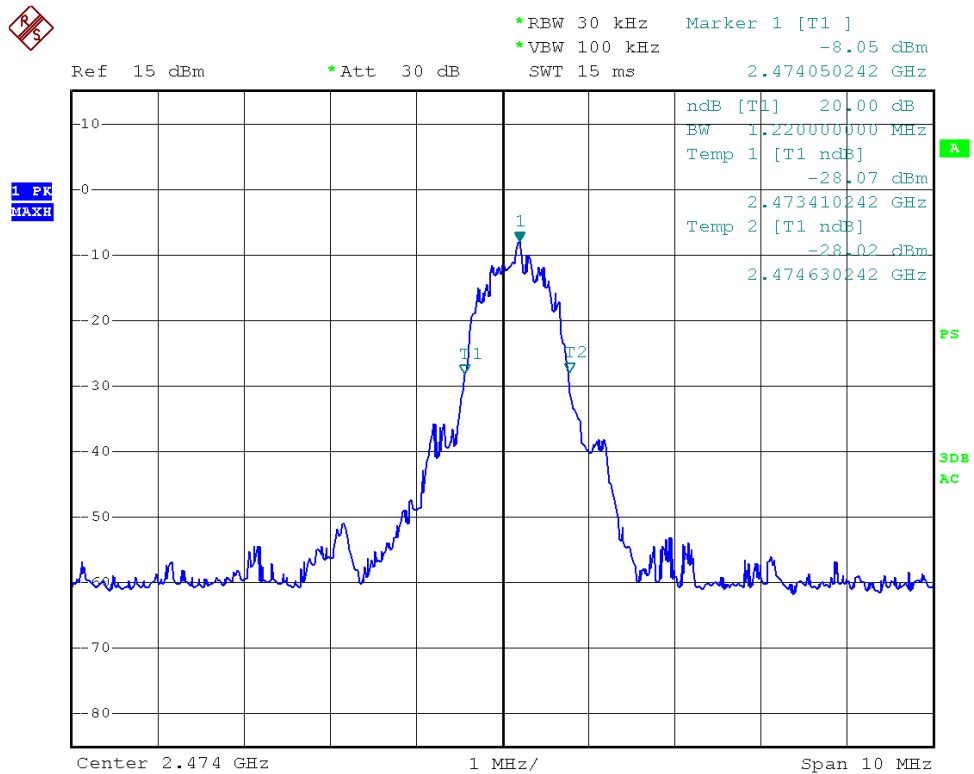
5.4. Test Results

Pass.

Please refer the following plot.

20dB Down:





6. ANTENNA APPLICATION

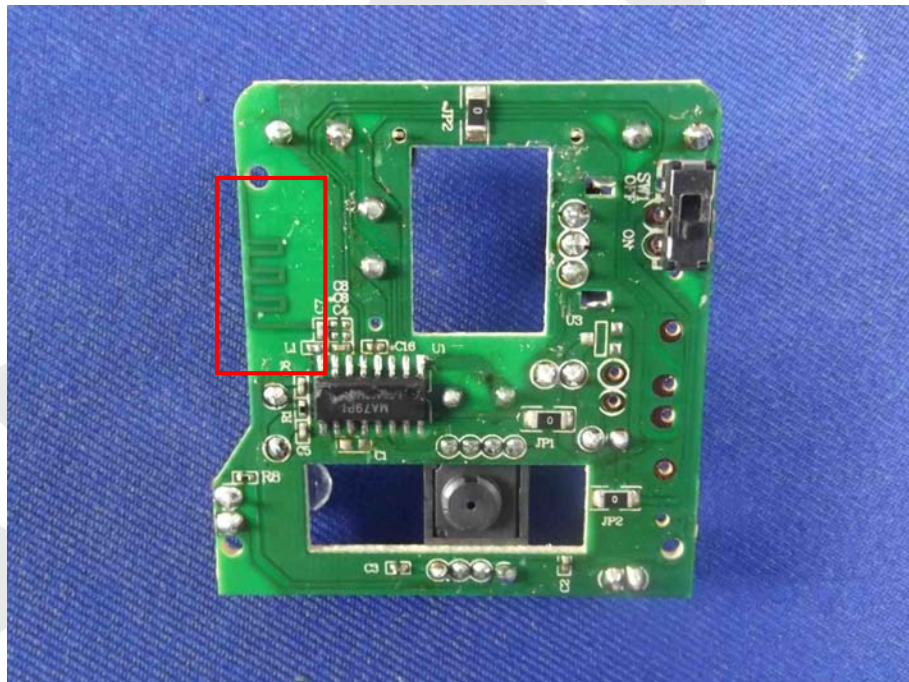
6.1. Antenna requirement

The EUT'S antenna is met the requirement of FCC part 15C section 15.203.

An intentional radiator shall be designed to ensure that no antenna other than that furnished by the responsible party shall be used with the device. The use of a permanently attached antenna or of an antenna that uses a unique coupling to the intentional radiator shall be considered sufficient to comply with the provisions of this section. The manufacturer may design the unit so that a broken antenna can be replaced by the user, but the use of a standard antenna jack or electrical connector is prohibited. This requirement does not apply to carrier current devices or to devices operated under the provisions of §15.211, §15.213, §15.217, §15.219, or §15.221. Further, this requirement does not apply to intentional radiators that must be professionally installed, such as perimeter protection systems and some field disturbance sensors, or to other intentional radiators which, in accordance with §15.31(d), must be measured at the installation site. However, the installer shall be responsible for ensuring that the proper antenna is employed so that the limits in this part are not exceeded.

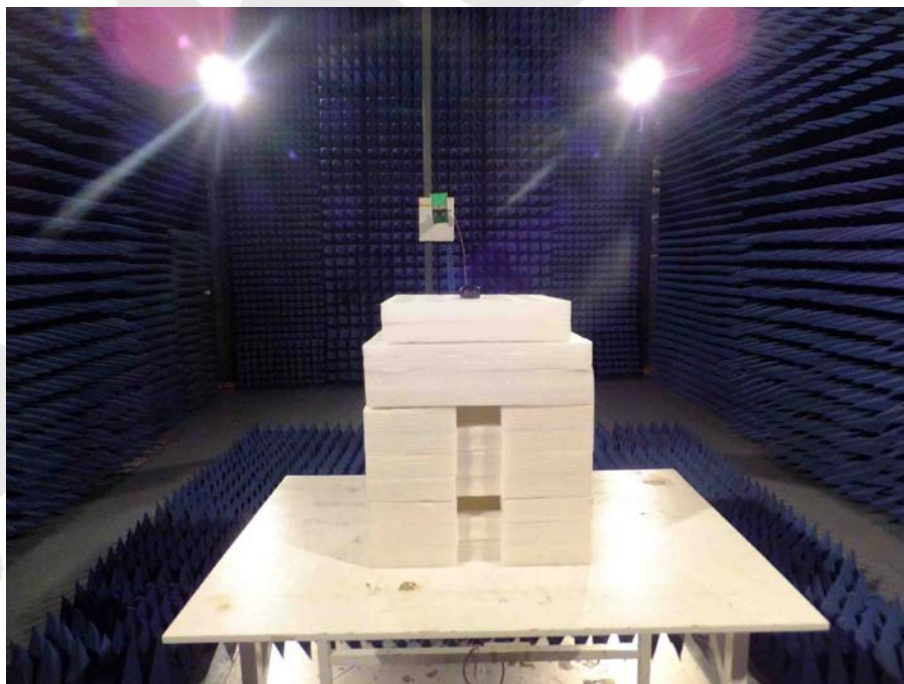
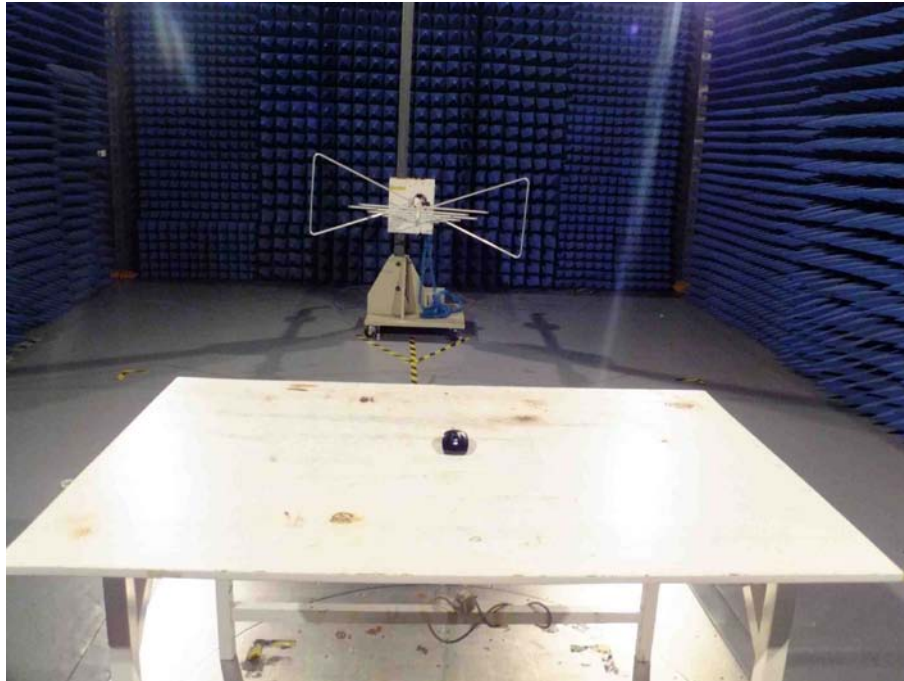
6.2. Result

The EUT's antenna used a PCB antenna which is permanently attached, The antenna's gain is 0dBi and meets the requirement.



7. PHOTOGRAPH

7.1. Photo of Radiation Emission Test



APPENDIX I (External Photos)

Figure 1
The EUT-Top View

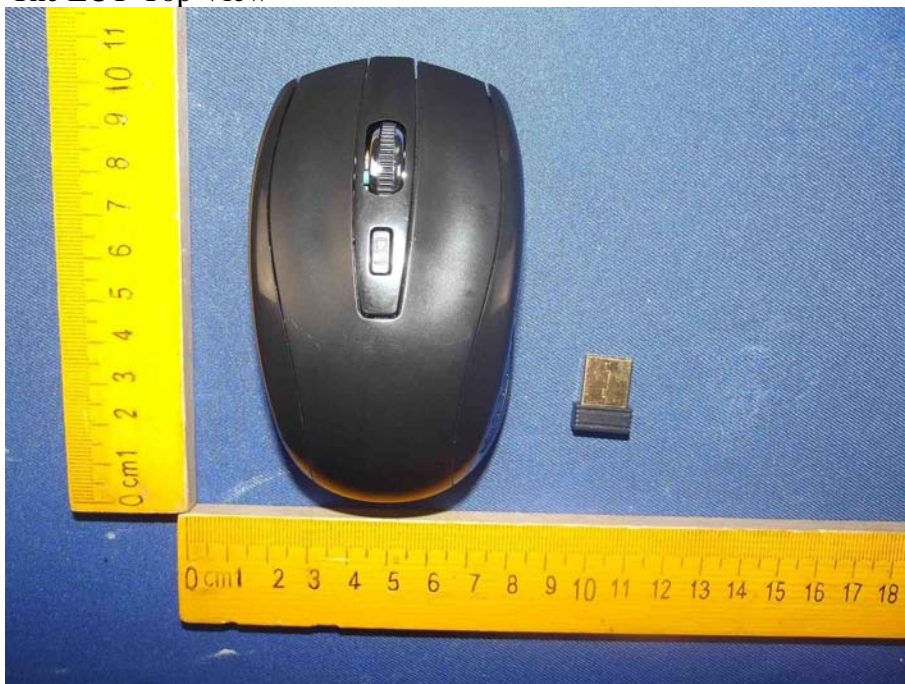


Figure 2
The EUT-Bottom View



Figure 3
The EUT-Front View



Figure 4
The EUT-Back View



Figure 5
The EUT-Right View



Figure 6
The EUT-Left View



APPENDIX II (Internal Photos)

Figure 7
The EUT-Inside View



Figure 8
PCB of the EUT-Front View

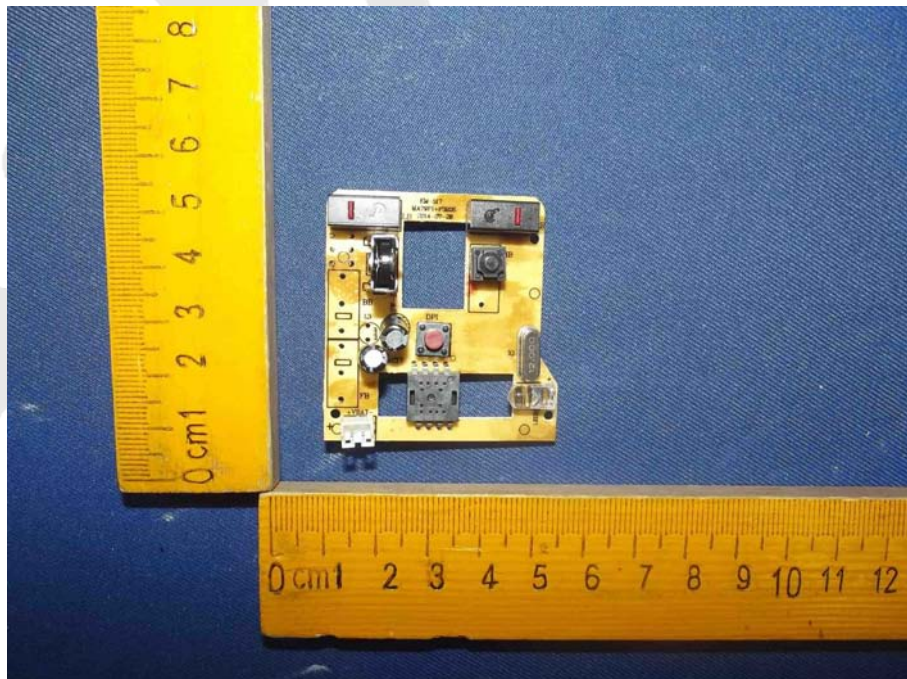


Figure 9
PCB of the EUT-Back View

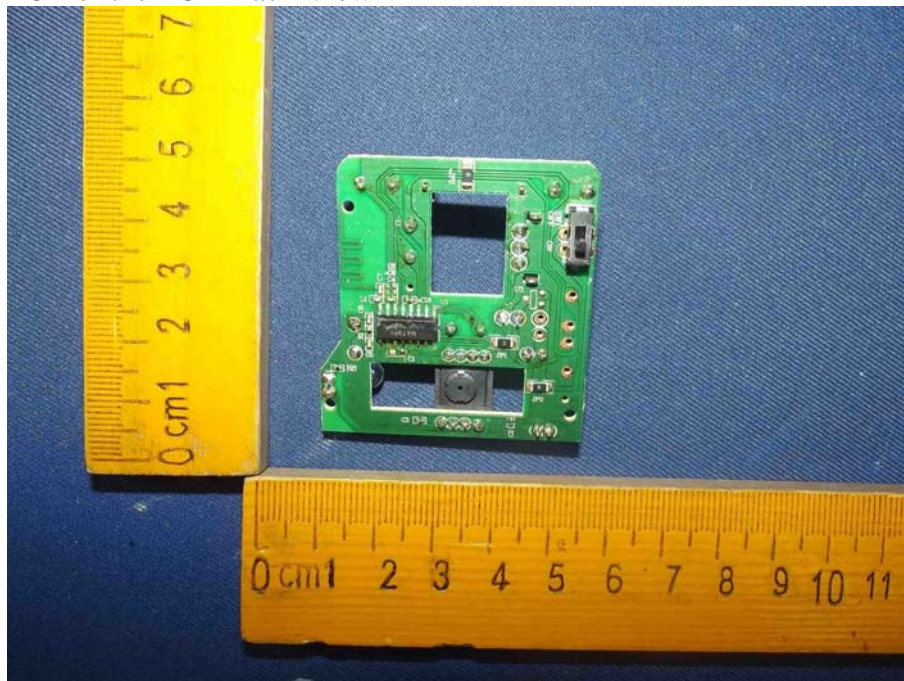


Figure 10
PCB of the EUT-Module View

