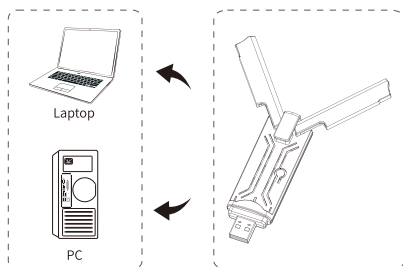


Wireless Adapter Quick installation

Step 1 Hardware connection

Please insert the usb adapter directly into the computer's **USB port**.

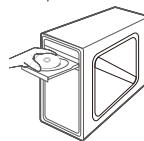


Note: When using the desktop PC, it is recommended to connect the rear interface of the computer chassis, the effect is better!
(Most of the desktop computer's front USB interface is underpowered or unavailable)

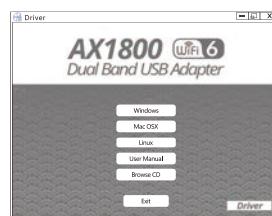
-1-

Step 2 Driver Installation

1. Put driver CD into the computer's CD drive.



2. Double-click the CD drive letter, open [autorun], and then select the corresponding system to fully automatically install the driver.



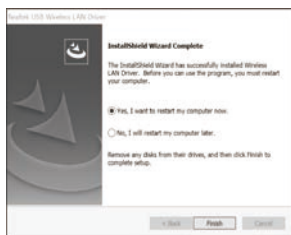
-2-

展开尺寸: 140x70mm
成品尺寸: 70x70mm

105g/157g铜版纸 单黑双面印刷 对折



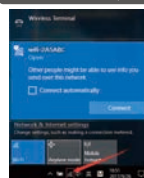
3. After the installation is completed, click to restart the computer.



-3-

Step 3 Wireless Connection

For Windows Users (Win 10)



1. Click on the Wi-Fi icon on the taskbar;
2. Select SSID connection.

For MAC OS Users



1. Click the Wi-Fi icon in the top right corner of the screen;
2. Select SSID connection.

-4-

This device complies with Part 15 of the FCC Rules. Operation is subject to the following two conditions: (1) this device may not cause harmful interference, and (2) this device must accept any interference received, including interference that may cause undesired operation

This device has been tested and found to comply with the limits for a Class B digital device, pursuant to Part 15 of the FCC Rules. These limits are designed to provide reasonable protection against harmful interference in a residential installation. This device generates, uses and can radiate radio frequency energy and, if not installed and used in accordance with the instructions, may cause harmful interference to radio communications.

However, there is no guarantee that interference will not occur in a particular installation. If this device does cause harmful interference to radio or television reception, which can be determined by turning the device off and on, the user is encouraged to try to correct the interference by one or more of the following measures:

- Reorient or relocate the receiving antenna.
- Increase the separation between the device and receiver.
- Connect the device into an outlet on a circuit different from that to which the receiver is connected.
- Consult the dealer or an experienced radio/TV technician for help

Changes or modifications not expressly approved by the party responsible for compliance could void the user's authority to operate the equipment