



REPORT No. : SZ19060060S01

Annex D Plots of Maximum SAR Test Results

GSM850_GPRS(4 TX slots)_Right Cheek_Ch251

Communication System: UID 0, GSM850(class 12) (0); Frequency: 848.8 MHz;Duty Cycle: 1:2.08
Medium: HSL_835 Medium parameters used: $f = 849$ MHz; $\sigma = 0.935$ S/m; $\epsilon_r = 42.132$; $\rho = 1000$

kg/m³

Ambient Temperature : 23.2 °C; Liquid Temperature : 22.5 °C

DASY5 Configuration:

- Probe: EX3DV4 - SN3823; ConvF(9.32, 9.32, 9.32); Calibrated: 2018.11.12;
- Sensor-Surface: 4mm (Mechanical Surface Detection)
- Electronics: DAE4 Sn480; Calibrated: 2019.04.11
- Phantom: SAM 2; Type: QD000P40CC; Serial: TP:1464
- Measurement SW: DASY52, Version 52.8 (8); SEMCAD X Version 14.6.10 (7331)

Ch251/Area Scan (81x111x1): Interpolated grid: dx=1.500 mm, dy=1.500 mm

Maximum value of SAR (interpolated) = 0.152 W/kg

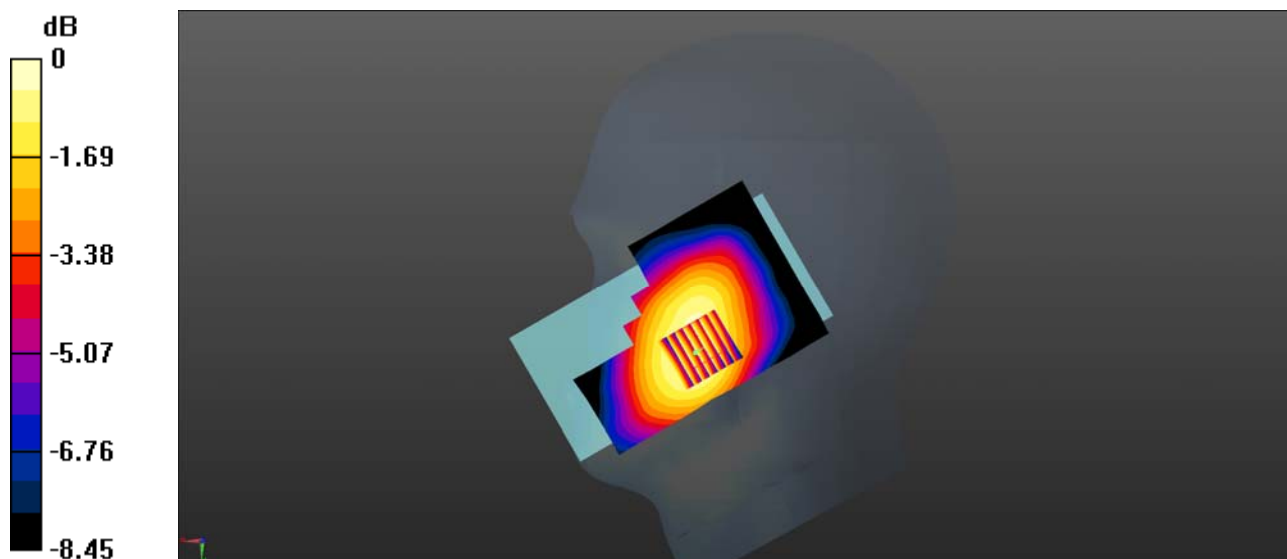
Ch251/Zoom Scan (7x7x7)/Cube 0: Measurement grid: dx=8mm, dy=8mm, dz=5mm

Reference Value = 3.919 V/m; Power Drift = 0.13 dB

Peak SAR (extrapolated) = 0.178 W/kg

SAR(1 g) = 0.146 W/kg; SAR(10 g) = 0.116 W/kg

Maximum value of SAR (measured) = 0.153 W/kg



0 dB = 0.152 W/kg

GSM1900_GPRS(4 TX slots)_Left Cheek_Ch661

Communication System: UID 0, PCS1900(class 12) (0); Frequency: 1880 MHz;Duty Cycle: 1:2.08
Medium: HSL_1900 Medium parameters used: $f = 1880$ MHz; $\sigma = 1.321$ S/m; $\epsilon_r = 41.384$; $\rho = 1000$ kg/m³

Ambient Temperature : 23.4 °C; Liquid Temperature : 22.3 °C

DASY5 Configuration:

- Probe: EX3DV4 - SN3823; ConvF(7.68, 7.68, 7.68); Calibrated: 2018.11.12;
- Sensor-Surface: 4mm (Mechanical Surface Detection)
- Electronics: DAE4 Sn480; Calibrated: 2019.04.11
- Phantom: SAM 2; Type: QD000P40CC; Serial: TP:1464
- Measurement SW: DASY52, Version 52.8 (8); SEMCAD X Version 14.6.10 (7331)

Ch661/Area Scan (81x111x1): Interpolated grid: dx=1.500 mm, dy=1.500 mm
Maximum value of SAR (interpolated) = 0.155 W/kg

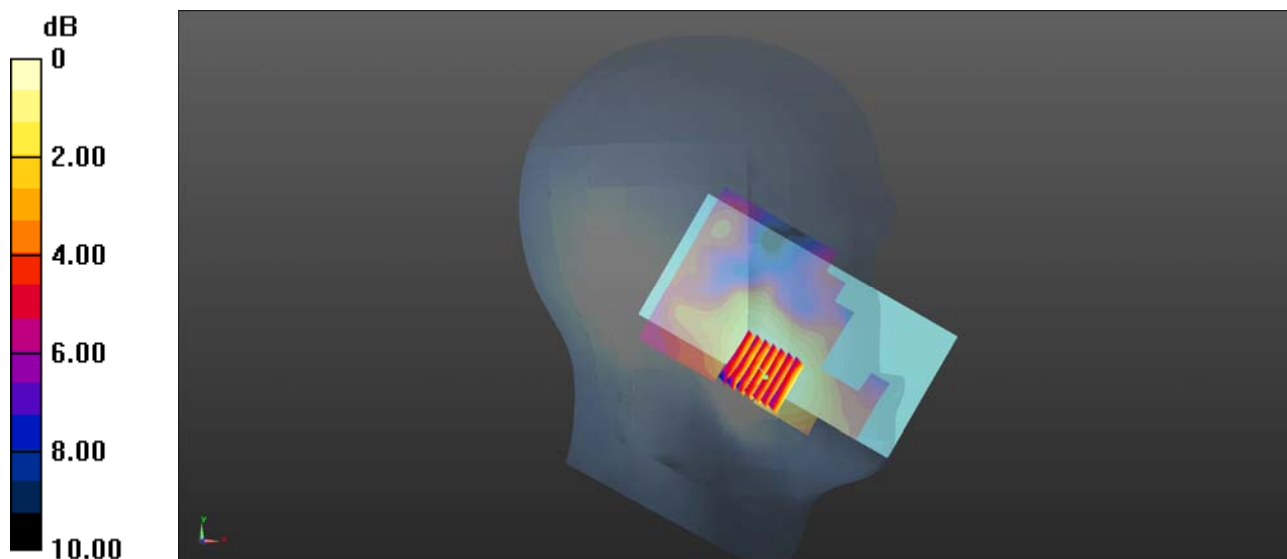
Ch661/Zoom Scan (7x7x7)/Cube 0: Measurement grid: dx=8mm, dy=8mm, dz=5mm

Reference Value = 5.937 V/m; Power Drift = 0.14 dB

Peak SAR (extrapolated) = 0.213 W/kg

SAR(1 g) = 0.141 W/kg; SAR(10 g) = 0.089 W/kg

Maximum value of SAR (measured) = 0.153 W/kg



0 dB = 0.153 W/kg

LTE Band 5_10MHz_QPSK_1RB_25Offset_Right Cheek_Ch20450

Communication System: UID 0, LTE (0); Frequency: 829 MHz; Duty Cycle: 1:1

Medium: HSL_835 Medium parameters used: $f = 829$ MHz; $\sigma = 0.917$ S/m; $\epsilon_r = 42.33$; $\rho = 1000$ kg/m³

Ambient Temperature : 23.2 °C; Liquid Temperature : 22.5 °C

DASY5 Configuration:

- Probe: EX3DV4 - SN3823; ConvF(9.32, 9.32, 9.32); Calibrated: 2018.11.12;
- Sensor-Surface: 4mm (Mechanical Surface Detection)
- Electronics: DAE4 Sn480; Calibrated: 2019.04.11
- Phantom: SAM 2; Type: QD000P40CC; Serial: TP:1464
- Measurement SW: DASY52, Version 52.8 (8); SEMCAD X Version 14.6.10 (7331)

Ch20450/Area Scan (81x111x1): Interpolated grid: dx=1.500 mm, dy=1.500 mm

Maximum value of SAR (interpolated) = 0.0991 W/kg

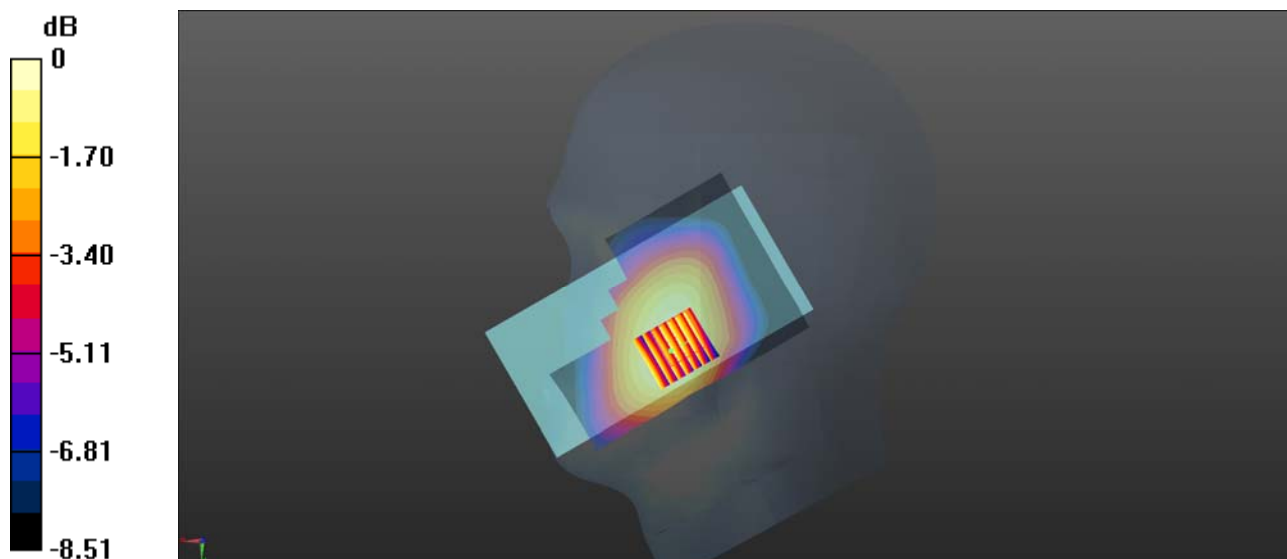
Ch20450/Zoom Scan (7x7x7)/Cube 0: Measurement grid: dx=8mm, dy=8mm, dz=5mm

Reference Value = 2.306 V/m; Power Drift = 0.18 dB

Peak SAR (extrapolated) = 0.112 W/kg

SAR(1 g) = 0.095 W/kg; SAR(10 g) = 0.076 W/kg

Maximum value of SAR (measured) = 0.0986 W/kg



LTE Band 40_10MHz_QPSK_1RB_0Offset_Left Cheek_Ch38750

Communication System: UID 0, LTE (0); Frequency: 2310 MHz; Duty Cycle: 1:1

Medium: HSL_2300 Medium parameters used: $f = 2310$ MHz; $\sigma = 1.707$ S/m; $\epsilon_r = 41.263$; $\rho = 1000$ kg/m³

Ambient Temperature : 23.3 °C; Liquid Temperature : 22.4 °C

DASY5 Configuration:

- Probe: EX3DV4 - SN3823; ConvF(7.55, 7.55, 7.55); Calibrated: 2018.11.12;
- Sensor-Surface: 4mm (Mechanical Surface Detection)
- Electronics: DAE4 Sn480; Calibrated: 2019.04.11
- Phantom: SAM 2; Type: QD000P40CC; Serial: TP:1464
- Measurement SW: DASY52, Version 52.8 (8); SEMCAD X Version 14.6.10 (7331)

Ch38750/Area Scan (81x111x1): Interpolated grid: dx=1.200 mm, dy=1.200 mm

Maximum value of SAR (interpolated) = 0.0788 W/kg

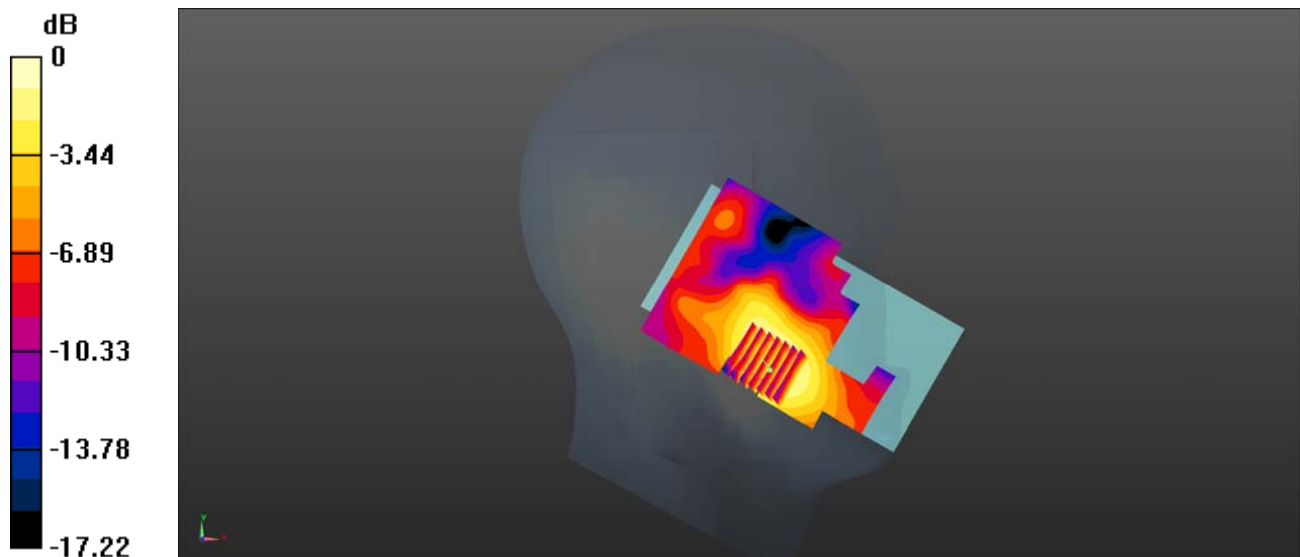
Ch38750/Zoom Scan (7x7x7)/Cube 0: Measurement grid: dx=5mm, dy=5mm, dz=5mm

Reference Value = 2.784 V/m; Power Drift = 0.09 dB

Peak SAR (extrapolated) = 0.137 W/kg

SAR(1 g) = 0.075 W/kg; SAR(10 g) = 0.045 W/kg

Maximum value of SAR (measured) = 0.0812 W/kg



0 dB = 0.0788 W/kg

LTE Band 40_10MHz_QPSK_1RB_49Offset_Left Cheek_Ch39200

Communication System: UID 0, LTE (0); Frequency: 2355 MHz; Duty Cycle: 1:1

Medium: HSL_2300 Medium parameters used: $f = 2355$ MHz; $\sigma = 1.742$ S/m; $\epsilon_r = 41.172$; $\rho = 1000$ kg/m³

Ambient Temperature : 23.3 °C; Liquid Temperature : 22.4 °C

DASY5 Configuration:

- Probe: EX3DV4 - SN3823; ConvF(7.55, 7.55, 7.55); Calibrated: 2018.11.12;
- Sensor-Surface: 4mm (Mechanical Surface Detection)
- Electronics: DAE4 Sn480; Calibrated: 2019.04.11
- Phantom: SAM 2; Type: QD000P40CC; Serial: TP:1464
- Measurement SW: DASY52, Version 52.8 (8); SEMCAD X Version 14.6.10 (7331)

Ch39200/Area Scan (81x111x1): Interpolated grid: dx=1.200 mm, dy=1.200 mm

Maximum value of SAR (interpolated) = 0.0821 W/kg

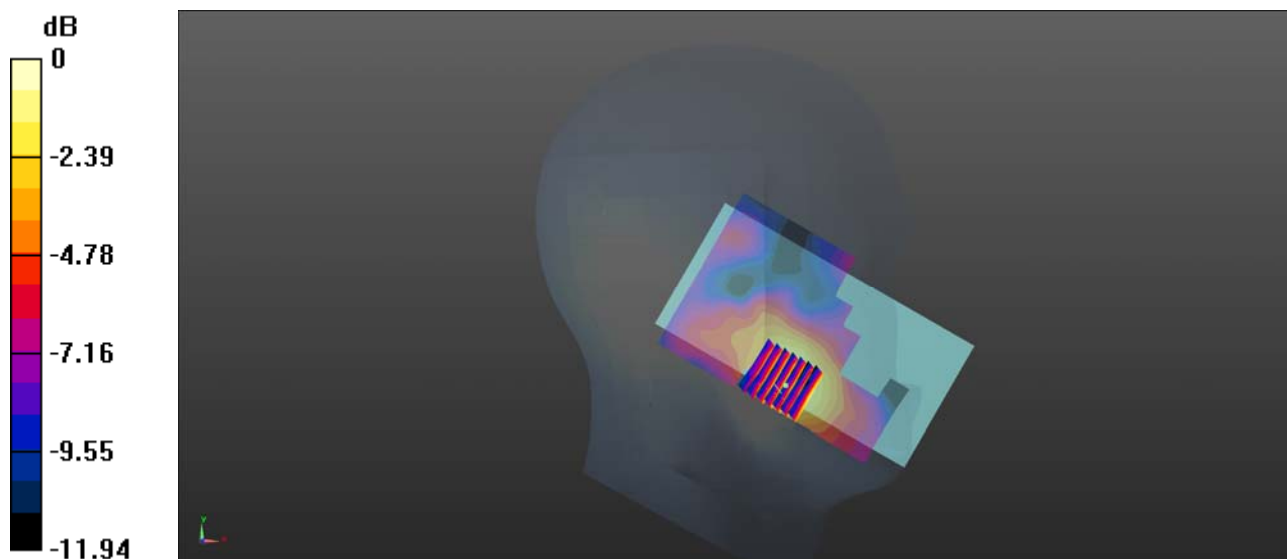
Ch39200/Zoom Scan (7x7x7)/Cube 0: Measurement grid: dx=5mm, dy=5mm, dz=5mm

Reference Value = 2.958 V/m; Power Drift = -0.09 dB

Peak SAR (extrapolated) = 0.137 W/kg

SAR(1 g) = 0.074 W/kg; SAR(10 g) = 0.044 W/kg

Maximum value of SAR (measured) = 0.0789 W/kg



0 dB = 0.0821 W/kg

LTE Band 41_20MHz_QPSK_1RB_49Offset_Left Cheek_Ch40600

Communication System: UID 0, LTE (0); Frequency: 2591 MHz; Duty Cycle: 1:1

Medium: HSL_2600 Medium parameters used: $f = 2591$ MHz; $\sigma = 1.997$ S/m; $\epsilon_r = 40.27$; $\rho = 1000$ kg/m³

Ambient Temperature : 23.1 °C; Liquid Temperature : 22.3 °C

DASY5 Configuration:

- Probe: EX3DV4 - SN3823; ConvF(6.98, 6.98, 6.98); Calibrated: 2018.11.12;
- Sensor-Surface: 4mm (Mechanical Surface Detection)
- Electronics: DAE4 Sn480; Calibrated: 2019.04.11
- Phantom: SAM 2; Type: QD000P40CC; Serial: TP:1464
- Measurement SW: DASY52, Version 52.8 (8); SEMCAD X Version 14.6.10 (7331)

Ch40600/Area Scan (81x111x1): Interpolated grid: dx=1.200 mm, dy=1.200 mm

Maximum value of SAR (interpolated) = 0.147 W/kg

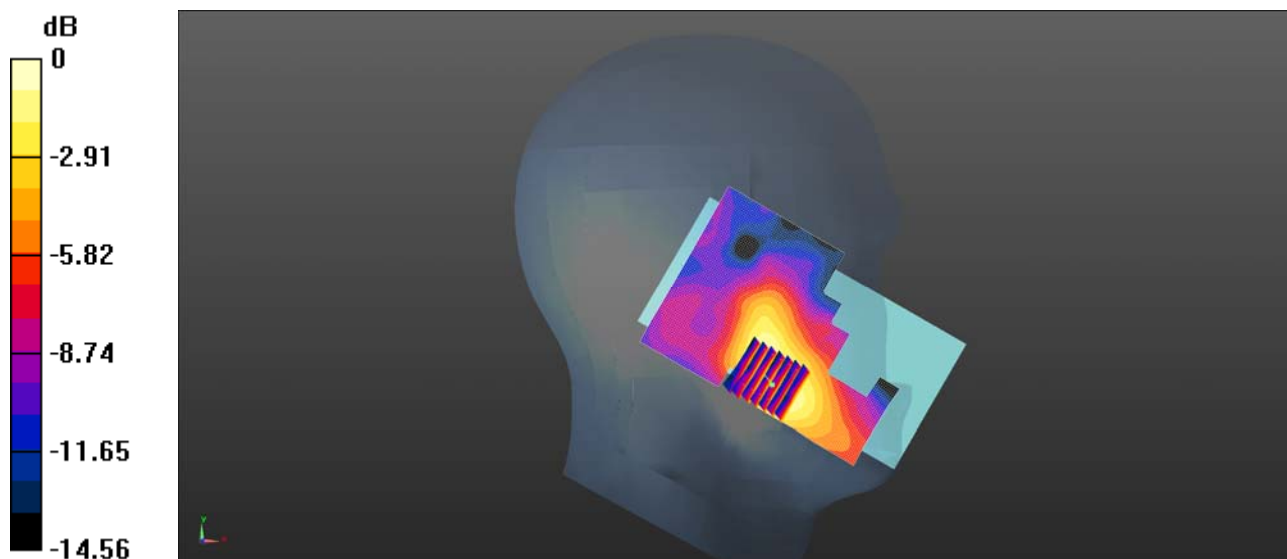
Ch40600/Zoom Scan (7x7x7)/Cube 0: Measurement grid: dx=5mm, dy=5mm, dz=5mm

Reference Value = 2.888 V/m; Power Drift = 0.15 dB

Peak SAR (extrapolated) = 0.258 W/kg

SAR(1 g) = 0.135 W/kg; SAR(10 g) = 0.075 W/kg

Maximum value of SAR (measured) = 0.146 W/kg



0 dB = 0.146 W/kg

WLAN 2.4GHz_802.11b 1Mbps_Right Tilt_Ch6

Communication System: UID 0, WLAN 2.4GHz 802.11b (0); Frequency: 2437 MHz; Duty Cycle: 1:1
Medium: HSL_2450 Medium parameters used: $f = 2437$ MHz; $\sigma = 1.828$ S/m; $\epsilon_r = 40.968$; $\rho = 1000$

kg/m³

Ambient Temperature : 23.3 °C; Liquid Temperature : 22.7 °C

DASY5 Configuration:

- Probe: EX3DV4 - SN3823; ConvF(7.34, 7.34, 7.34); Calibrated: 2018.11.12;
- Sensor-Surface: 4mm (Mechanical Surface Detection)
- Electronics: DAE4 Sn480; Calibrated: 2019.04.11
- Phantom: SAM 2; Type: QD000P40CC; Serial: TP:1464
- Measurement SW: DASY52, Version 52.8 (8); SEMCAD X Version 14.6.10 (7331)

Ch6/Area Scan (81x131x1): Interpolated grid: dx=1.200 mm, dy=1.200 mm

Maximum value of SAR (interpolated) = 1.06 W/kg

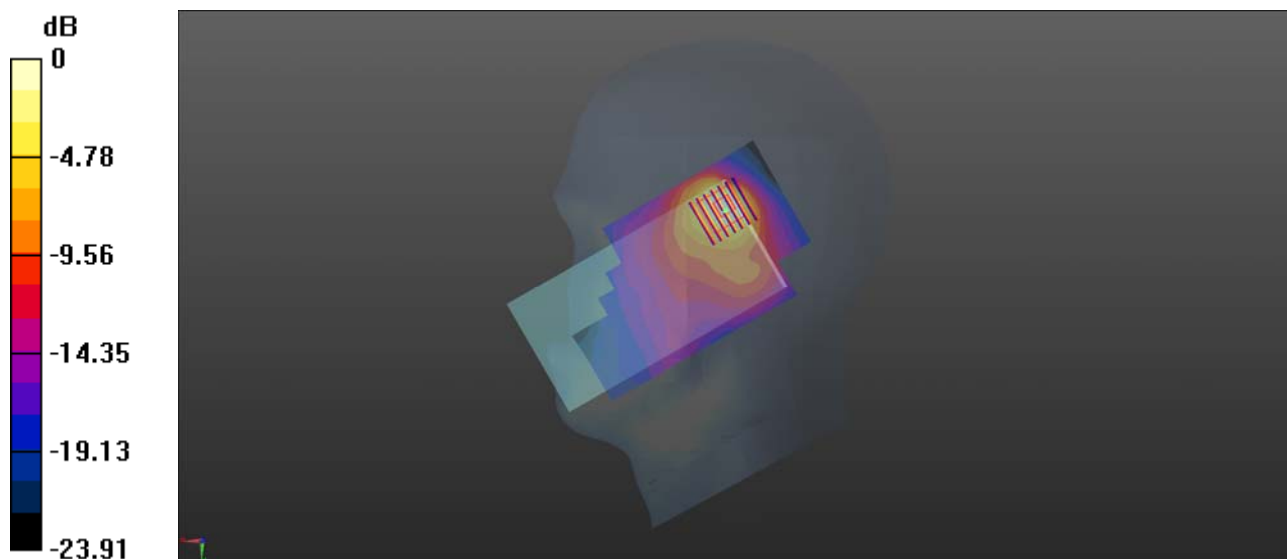
Ch6/Zoom Scan (7x7x7)/Cube 0: Measurement grid: dx=5mm, dy=5mm, dz=5mm

Reference Value = 10.43 V/m; Power Drift = -0.01 dB

Peak SAR (extrapolated) = 2.25 W/kg

SAR(1 g) = 0.880 W/kg; SAR(10 g) = 0.393 W/kg

Maximum value of SAR (measured) = 0.943 W/kg



0 dB = 1.06 W/kg

GSM850_GPRS(4 TX slots)_Back Side_10mm_Ch251

Communication System: UID 0, GSM850(class 12) (0); Frequency: 848.8 MHz; Duty Cycle: 1:2.08
 Medium: MSL_835 Medium parameters used: $f = 849$ MHz; $\sigma = 0.993$ S/m; $\epsilon_r = 55.699$; $\rho = 1000$

kg/m³

Ambient Temperature : 23.3 °C; Liquid Temperature : 22.6 °C

DASY5 Configuration:

- Probe: EX3DV4 - SN3823; ConvF(9.24, 9.24, 9.24); Calibrated: 2018.11.12;
- Sensor-Surface: 4mm (Mechanical Surface Detection)
- Electronics: DAE4 Sn480; Calibrated: 2019.04.11
- Phantom: SAM 2; Type: QD000P40CC; Serial: TP:1464
- Measurement SW: DASY52, Version 52.8 (8); SEMCAD X Version 14.6.10 (7331)

Ch251/Area Scan (81x161x1): Interpolated grid: dx=1.500 mm, dy=1.500 mm

Maximum value of SAR (interpolated) = 0.519 W/kg

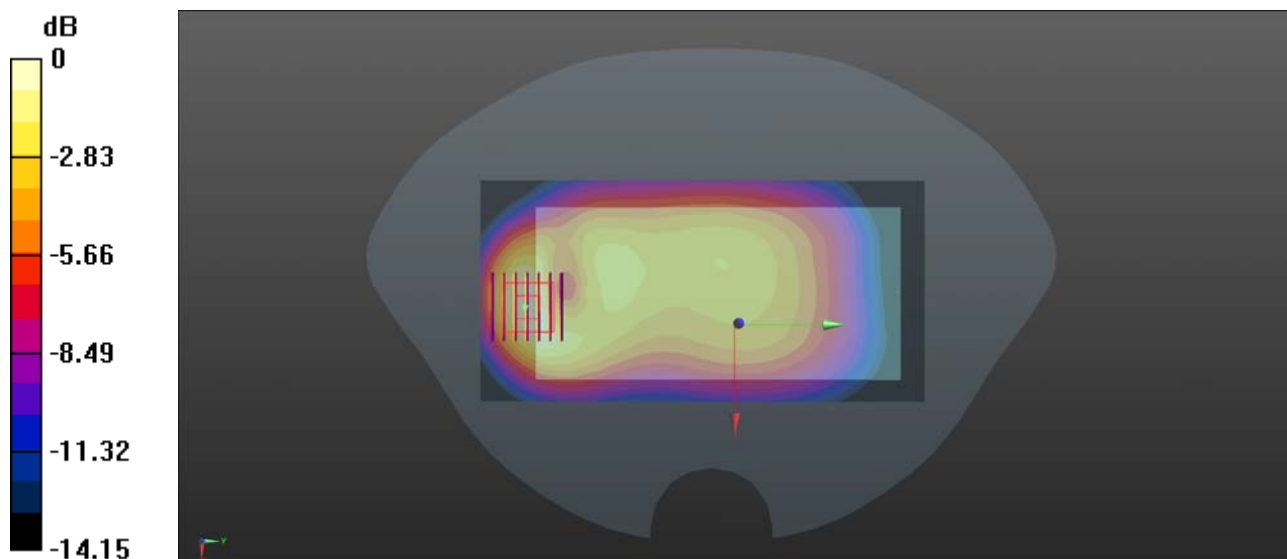
Ch251/Zoom Scan (7x7x7)/Cube 0: Measurement grid: dx=8mm, dy=8mm, dz=5mm

Reference Value = 15.79 V/m; Power Drift = 0.04 dB

Peak SAR (extrapolated) = 0.812 W/kg

SAR(1 g) = 0.471 W/kg; SAR(10 g) = 0.264 W/kg

Maximum value of SAR (measured) = 0.524 W/kg



0 dB = 0.519 W/kg

GSM1900_GPRS(4 TX slots)_Back Side_10mm_Ch661

Communication System: UID 0, PCS1900(class 12) (0); Frequency: 1880 MHz;Duty Cycle: 1:2.08
 Medium: MSL_1900 Medium parameters used: $f = 1880$ MHz; $\sigma = 1.497$ S/m; $\epsilon_r = 54.63$; $\rho = 1000$ kg/m³

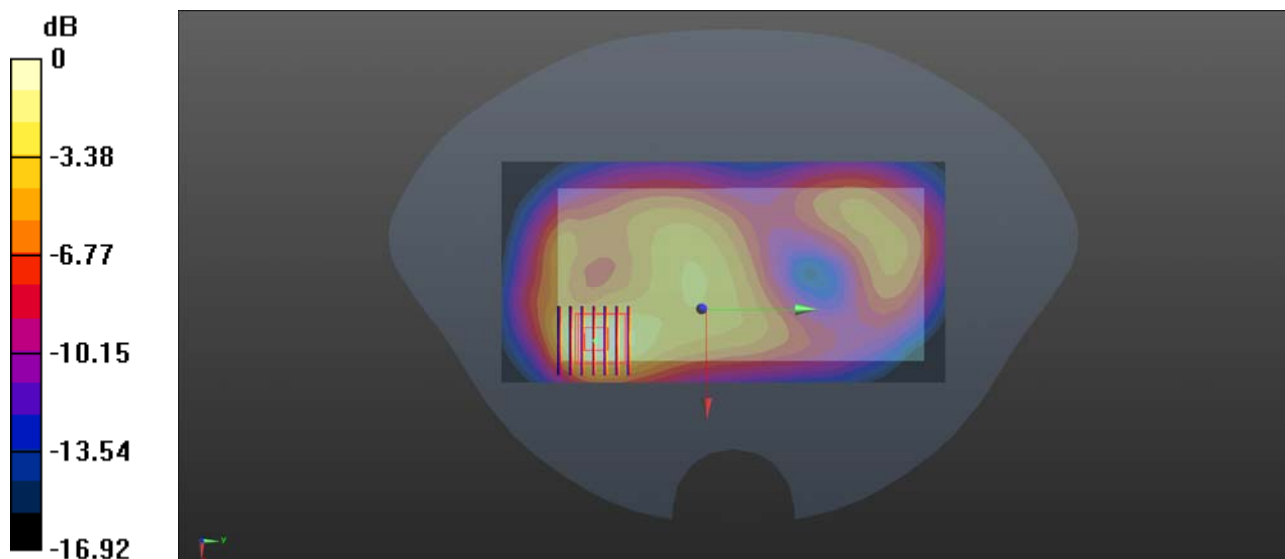
Ambient Temperature : 23.2 °C; Liquid Temperature : 22.7 °C

DASY5 Configuration:

- Probe: EX3DV4 - SN3823; ConvF(7.4, 7.4, 7.4); Calibrated: 2018.11.12;
- Sensor-Surface: 4mm (Mechanical Surface Detection)
- Electronics: DAE4 Sn480; Calibrated: 2019.04.11
- Phantom: SAM 2; Type: QD000P40CC; Serial: TP:1464
- Measurement SW: DASY52, Version 52.8 (8); SEMCAD X Version 14.6.10 (7331)

Ch661/Area Scan (81x161x1): Interpolated grid: dx=1.500 mm, dy=1.500 mm
 Maximum value of SAR (interpolated) = 0.559 W/kg

Ch661/Zoom Scan (7x7x7)/Cube 0: Measurement grid: dx=8mm, dy=8mm, dz=5mm
 Reference Value = 11.35 V/m; Power Drift = -0.01 dB
 Peak SAR (extrapolated) = 0.856 W/kg
SAR(1 g) = 0.482 W/kg; SAR(10 g) = 0.258 W/kg
 Maximum value of SAR (measured) = 0.542 W/kg



0 dB = 0.559 W/kg

LTE Band 5_10MHz_QPSK_1RB_25Offset_Back Side_10mm_Ch20450

Communication System: UID 0, LTE (0); Frequency: 829 MHz; Duty Cycle: 1:1

Medium: MSL_835 Medium parameters used: $f = 829 \text{ MHz}$; $\sigma = 0.974 \text{ S/m}$; $\epsilon_r = 55.761$; $\rho = 1000 \text{ kg/m}^3$

Ambient Temperature : $23.3 \text{ }^\circ\text{C}$; Liquid Temperature : $22.6 \text{ }^\circ\text{C}$

DASY5 Configuration:

- Probe: EX3DV4 - SN3823; ConvF(9.24, 9.24, 9.24); Calibrated: 2018.11.12;
- Sensor-Surface: 4mm (Mechanical Surface Detection)
- Electronics: DAE4 Sn480; Calibrated: 2019.04.11
- Phantom: SAM 2; Type: QD000P40CC; Serial: TP:1464
- Measurement SW: DASY52, Version 52.8 (8); SEMCAD X Version 14.6.10 (7331)

Ch20450/Area Scan (81x161x1): Interpolated grid: $dx=1.500 \text{ mm}$, $dy=1.500 \text{ mm}$

Maximum value of SAR (interpolated) = 0.318 W/kg

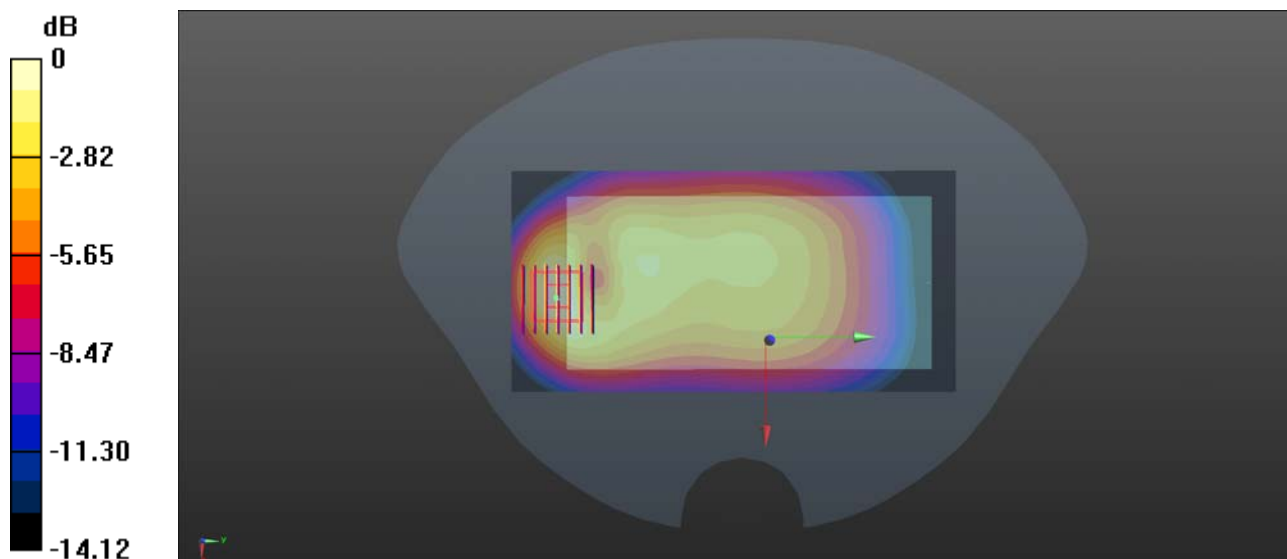
Ch20450/Zoom Scan (7x7x7)/Cube 0: Measurement grid: $dx=8\text{mm}$, $dy=8\text{mm}$, $dz=5\text{mm}$

Reference Value = 13.22 V/m ; Power Drift = -0.01 dB

Peak SAR (extrapolated) = 0.512 W/kg

SAR(1 g) = 0.292 W/kg ; SAR(10 g) = 0.163 W/kg

Maximum value of SAR (measured) = 0.327 W/kg



0 dB = 0.318 W/kg

LTE Band 40_10MHz_QPSK_1RB_0Offset_Back Side_10mm_Ch38750

Communication System: UID 0, LTE (0); Frequency: 2310 MHz; Duty Cycle: 1:1

Medium: MSL_2300 Medium parameters used: $f = 2310$ MHz; $\sigma = 1.691$ S/m; $\epsilon_r = 53.432$; $\rho = 1000$ kg/m³

Ambient Temperature : 23.3 °C; Liquid Temperature : 22.5 °C

DASY5 Configuration:

- Probe: EX3DV4 - SN3823; ConvF(7.38, 7.38, 7.38); Calibrated: 2018.11.12;
- Sensor-Surface: 4mm (Mechanical Surface Detection)
- Electronics: DAE4 Sn480; Calibrated: 2019.04.11
- Phantom: SAM 1; Type: QD000P40CC; Serial: TP:1471
- Measurement SW: DASY52, Version 52.8 (8); SEMCAD X Version 14.6.10 (7331)

Ch38750/Area Scan (81x161x1): Interpolated grid: dx=1.200 mm, dy=1.200 mm

Maximum value of SAR (interpolated) = 0.246 W/kg

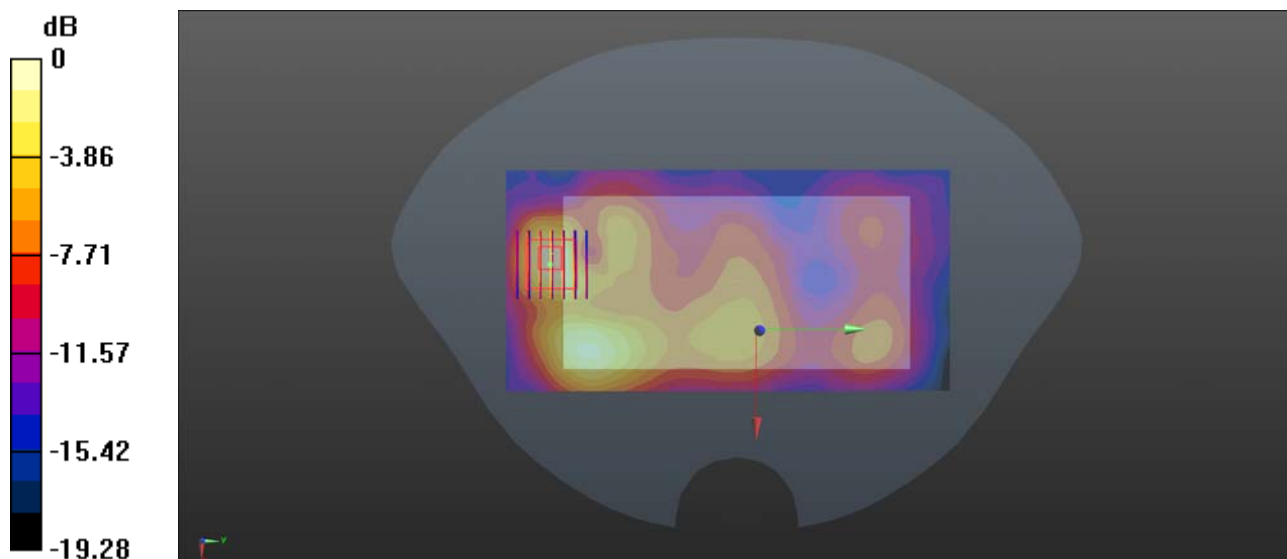
Ch38750/Zoom Scan (7x7x7)/Cube 0: Measurement grid: dx=5mm, dy=5mm, dz=5mm

Reference Value = 5.692 V/m; Power Drift = -0.15 dB

Peak SAR (extrapolated) = 0.465 W/kg

SAR(1 g) = 0.216 W/kg; SAR(10 g) = 0.096 W/kg

Maximum value of SAR (measured) = 0.250 W/kg



0 dB = 0.246 W/kg

LTE Band 40_10MHz_QPSK_1RB_49Offset_Back Side_10mm_Ch39200

Communication System: UID 0, LTE (0); Frequency: 2355 MHz; Duty Cycle: 1:1

Medium: MSL_2300 Medium parameters used: $f = 2355$ MHz; $\sigma = 1.749$ S/m; $\epsilon_r = 53.361$; $\rho = 1000$ kg/m³

Ambient Temperature : 23.3 °C; Liquid Temperature : 22.5 °C

DASY5 Configuration:

- Probe: EX3DV4 - SN3823; ConvF(7.38, 7.38, 7.38); Calibrated: 2018.11.12;
- Sensor-Surface: 4mm (Mechanical Surface Detection)
- Electronics: DAE4 Sn480; Calibrated: 2019.04.11
- Phantom: SAM 1; Type: QD000P40CC; Serial: TP:1471
- Measurement SW: DASY52, Version 52.8 (8); SEMCAD X Version 14.6.10 (7331)

Ch39200/Area Scan (81x161x1): Interpolated grid: dx=1.200 mm, dy=1.200 mm

Maximum value of SAR (interpolated) = 0.286 W/kg

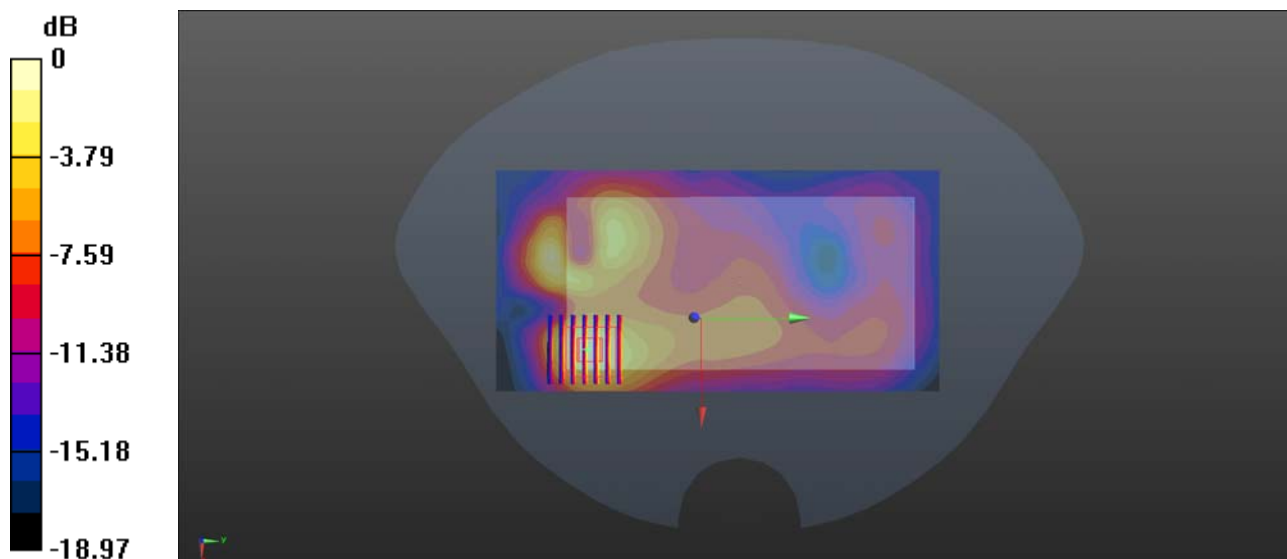
Ch39200/Zoom Scan (7x7x7)/Cube 0: Measurement grid: dx=5mm, dy=5mm, dz=5mm

Reference Value = 5.111 V/m; Power Drift = -0.11 dB

Peak SAR (extrapolated) = 0.421 W/kg

SAR(1 g) = 0.227 W/kg; SAR(10 g) = 0.111 W/kg

Maximum value of SAR (measured) = 0.261 W/kg



0 dB = 0.286 W/kg

LTE Band 41_20MHz_QPSK_1RB_49Offset_Back Side_10mm_Ch40600

Communication System: UID 0, LTE (0); Frequency: 2591 MHz; Duty Cycle: 1:1

Medium: MSL_2600 Medium parameters used: $f = 2591$ MHz; $\sigma = 2.06$ S/m; $\epsilon_r = 52.58$; $\rho = 1000$ kg/m³

Ambient Temperature : 23.2 °C; Liquid Temperature : 22.2 °C

DASY5 Configuration:

- Probe: EX3DV4 - SN3823; ConvF(7.01, 7.01, 7.01); Calibrated: 2018.11.12;
- Sensor-Surface: 4mm (Mechanical Surface Detection)
- Electronics: DAE4 Sn480; Calibrated: 2019.04.11
- Phantom: SAM 1; Type: QD000P40CC; Serial: TP:1471
- Measurement SW: DASY52, Version 52.8 (8); SEMCAD X Version 14.6.10 (7331)

Ch40600/Area Scan (81x161x1): Interpolated grid: dx=1.200 mm, dy=1.200 mm

Maximum value of SAR (interpolated) = 0.340 W/kg

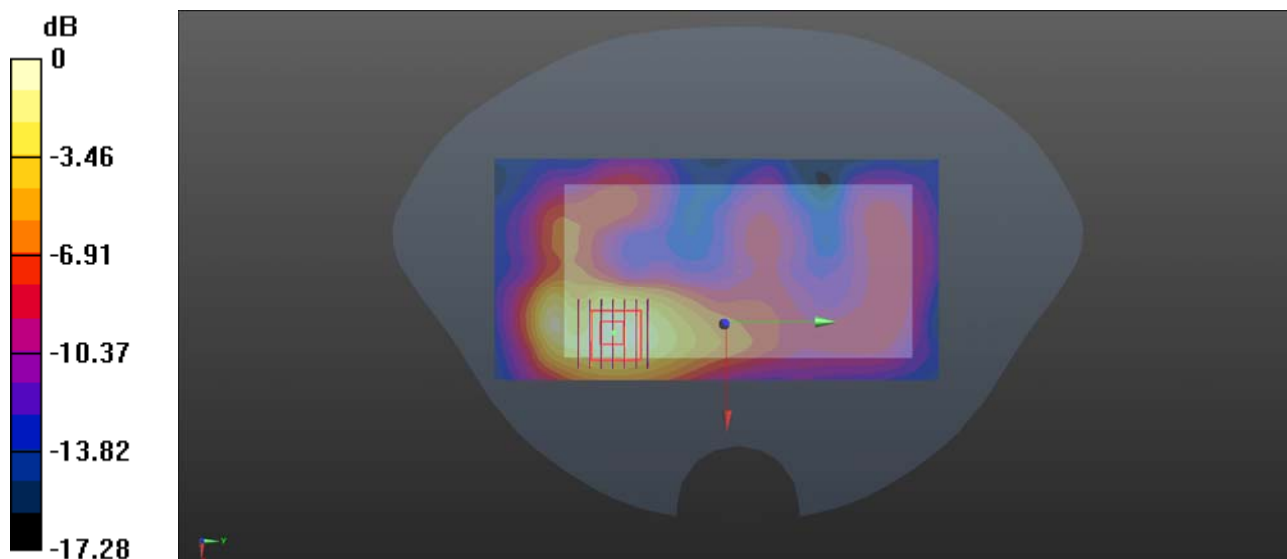
Ch40600/Zoom Scan (7x7x7)/Cube 0: Measurement grid: dx=5mm, dy=5mm, dz=5mm

Reference Value = 4.014 V/m; Power Drift = 0.13 dB

Peak SAR (extrapolated) = 0.560 W/kg

SAR(1 g) = 0.301 W/kg; SAR(10 g) = 0.158 W/kg

Maximum value of SAR (measured) = 0.331 W/kg



0 dB = 0.340 W/kg

WLAN 2.4GHz_802.11b 1Mbps Back Side_10mm_Ch6

Communication System: UID 0, WLAN 2.4GHz 802.11b (0); Frequency: 2437 MHz; Duty Cycle: 1:1
Medium: MSL_2450 Medium parameters used: $f = 2437$ MHz; $\sigma = 1.849$ S/m; $\epsilon_r = 53.049$; $\rho = 1000$ kg/m³

Ambient Temperature : 23.3 °C ; Liquid Temperature : 22.5 °C

DASY5 Configuration:

- Probe: EX3DV4 - SN3823; ConvF(7.15, 7.15, 7.15); Calibrated: 2018.11.12;
- Sensor-Surface: 4mm (Mechanical Surface Detection)
- Electronics: DAE4 Sn480; Calibrated: 2019.04.11
- Phantom: SAM 1; Type: QD000P40CC; Serial: TP:1471
- Measurement SW: DASY52, Version 52.8 (8); SEMCAD X Version 14.6.10 (7331)

Ch6/Area Scan (81x151x1): Interpolated grid: dx=1.200 mm, dy=1.200 mm

Maximum value of SAR (interpolated) = 0.366 W/kg

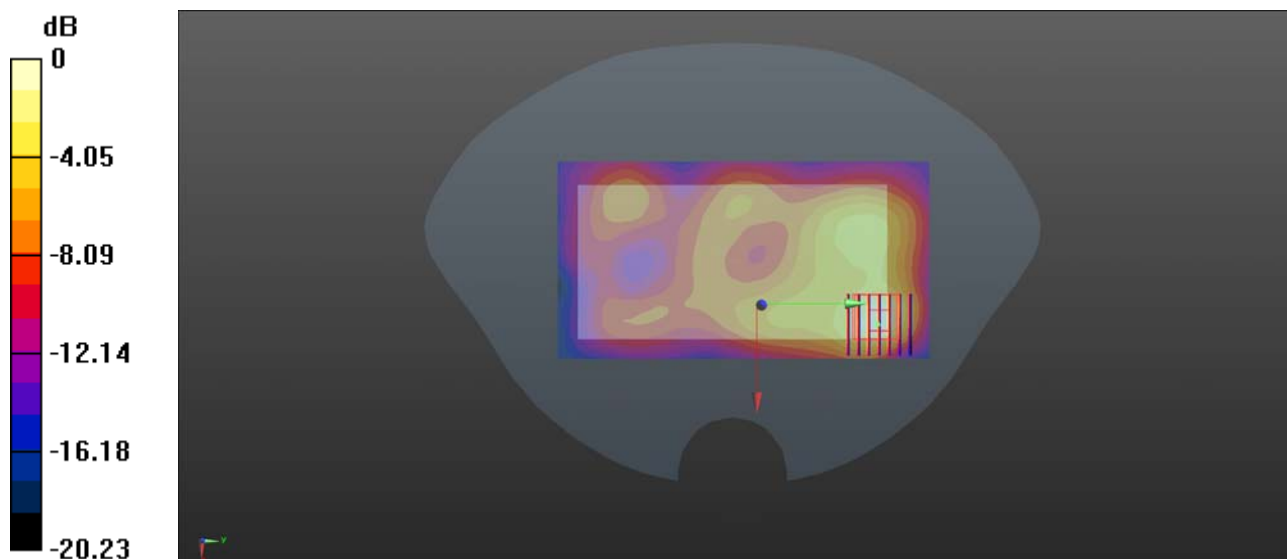
Ch6/Zoom Scan (7x7x7)/Cube 0: Measurement grid: dx=5mm, dy=5mm, dz=5mm

Reference Value = 5.283 V/m; Power Drift = 0.07 dB

Peak SAR (extrapolated) = 0.657 W/kg

SAR(1 g) = 0.313 W/kg; SAR(10 g) = 0.148 W/kg

Maximum value of SAR (measured) = 0.351 W/kg



WLAN 2.4GHz_802.11b 1Mbps_Right Tight_Ch6_Repeated

Communication System: UID 0, WLAN 2.4GHz 802.11b (0); Frequency: 2437 MHz; Duty Cycle: 1:1
Medium: HSL_2450 Medium parameters used: $f = 2437$ MHz; $\sigma = 1.828$ S/m; $\epsilon_r = 40.968$; $\rho = 1000$ kg/m³

Ambient Temperature : 23.3 °C; Liquid Temperature : 22.7 °C

DASY5 Configuration:

- Probe: EX3DV4 - SN3823; ConvF(7.34, 7.34, 7.34); Calibrated: 2018.11.12;
- Sensor-Surface: 4mm (Mechanical Surface Detection)
- Electronics: DAE4 Sn480; Calibrated: 2019.04.11
- Phantom: SAM 2; Type: QD000P40CC; Serial: TP:1464
- Measurement SW: DASY52, Version 52.8 (8); SEMCAD X Version 14.6.10 (7331)

Ch6/Area Scan (81x131x1): Interpolated grid: dx=1.200 mm, dy=1.200 mm

Maximum value of SAR (interpolated) = 1.05 W/kg

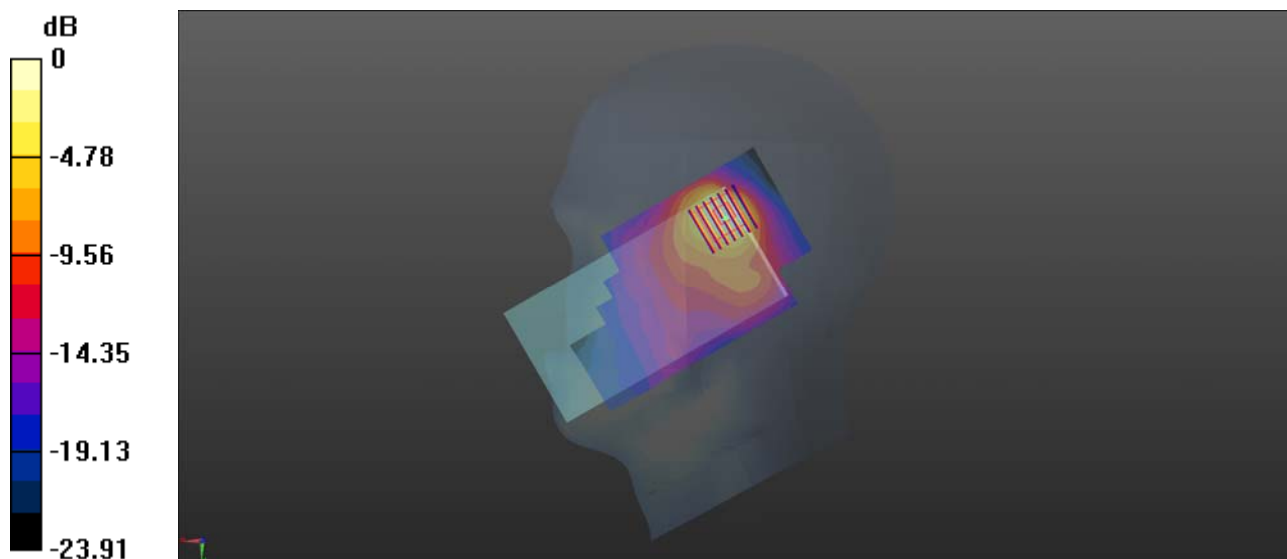
Ch6/Zoom Scan (7x7x7)/Cube 0: Measurement grid: dx=5mm, dy=5mm, dz=5mm

Reference Value = 10.43 V/m; Power Drift = -0.02 dB

Peak SAR (extrapolated) = 2.23 W/kg

SAR(1 g) = 0.879 W/kg; SAR(10 g) = 0.392 W/kg

Maximum value of SAR (measured) = 0.941 W/kg



0 dB = 1.05 W/kg

GSM850_GPRS(4 TX slots)_Back Side_10mm_Ch251

Communication System: UID 0, GSM850(class 12) (0); Frequency: 848.8 MHz;Duty Cycle: 1:2.08
Medium: MSL_835 Medium parameters used: $f = 849$ MHz; $\sigma = 0.993$ S/m; $\epsilon_r = 55.699$; $\rho = 1000$

kg/m³

Ambient Temperature : 23.3 °C; Liquid Temperature : 22.6 °C

DASY5 Configuration:

- Probe: EX3DV4 - SN3823; ConvF(9.24, 9.24, 9.24); Calibrated: 2018.11.12;
- Sensor-Surface: 4mm (Mechanical Surface Detection)
- Electronics: DAE4 Sn480; Calibrated: 2019.04.11
- Phantom: SAM 2; Type: QD000P40CC; Serial: TP:1464
- Measurement SW: DASY52, Version 52.8 (8); SEMCAD X Version 14.6.10 (7331)

Ch251/Area Scan (81x161x1): Interpolated grid: dx=1.500 mm, dy=1.500 mm

Maximum value of SAR (interpolated) = 0.519 W/kg

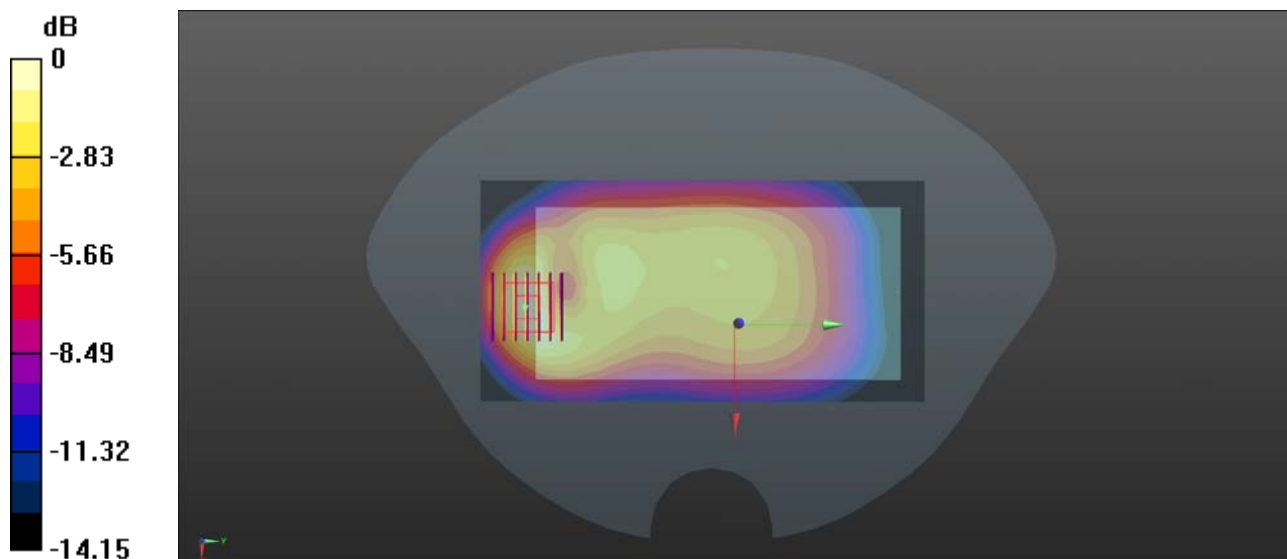
Ch251/Zoom Scan (7x7x7)/Cube 0: Measurement grid: dx=8mm, dy=8mm, dz=5mm

Reference Value = 15.79 V/m; Power Drift = 0.04 dB

Peak SAR (extrapolated) = 0.812 W/kg

SAR(1 g) = 0.471 W/kg; SAR(10 g) = 0.264 W/kg

Maximum value of SAR (measured) = 0.524 W/kg



0 dB = 0.519 W/kg

GSM1900_GPRS(4 TX slots)_Back Side_10mm_Ch661

Communication System: UID 0, PCS1900(class 12) (0); Frequency: 1880 MHz;Duty Cycle: 1:2.08
Medium: MSL_1900 Medium parameters used: $f = 1880$ MHz; $\sigma = 1.497$ S/m; $\epsilon_r = 54.63$; $\rho = 1000$ kg/m³

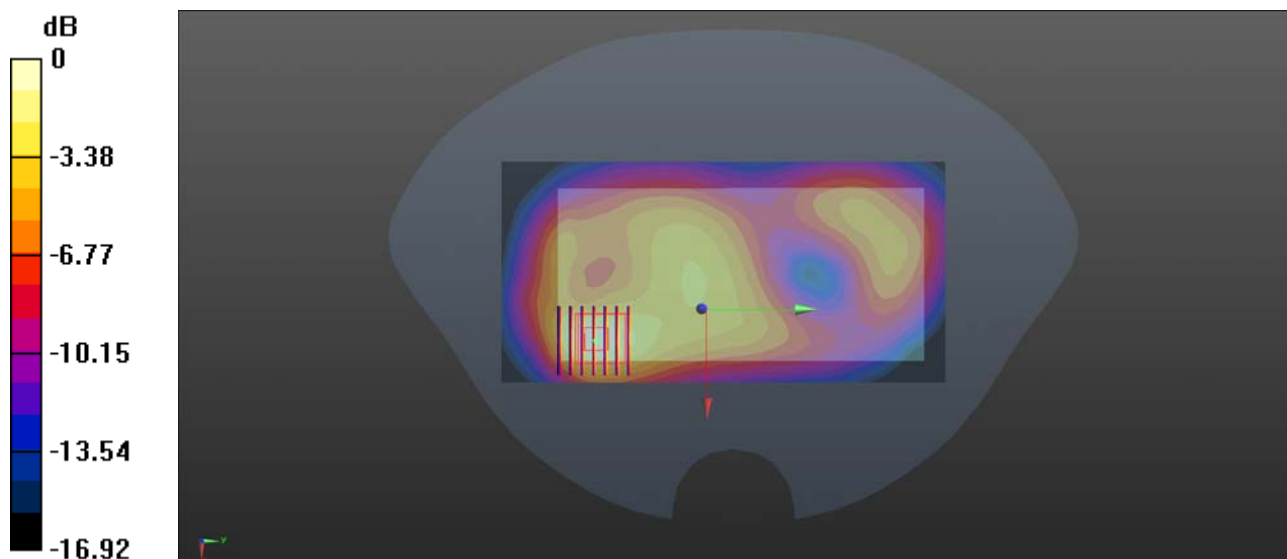
Ambient Temperature : 23.2 °C; Liquid Temperature : 22.7 °C

DASY5 Configuration:

- Probe: EX3DV4 - SN3823; ConvF(7.4, 7.4, 7.4); Calibrated: 2018.11.12;
- Sensor-Surface: 4mm (Mechanical Surface Detection)
- Electronics: DAE4 Sn480; Calibrated: 2019.04.11
- Phantom: SAM 2; Type: QD000P40CC; Serial: TP:1464
- Measurement SW: DASY52, Version 52.8 (8); SEMCAD X Version 14.6.10 (7331)

Ch661/Area Scan (81x161x1): Interpolated grid: dx=1.500 mm, dy=1.500 mm
Maximum value of SAR (interpolated) = 0.559 W/kg

Ch661/Zoom Scan (7x7x7)/Cube 0: Measurement grid: dx=8mm, dy=8mm, dz=5mm
Reference Value = 11.35 V/m; Power Drift = -0.01 dB
Peak SAR (extrapolated) = 0.856 W/kg
SAR(1 g) = 0.482 W/kg; SAR(10 g) = 0.258 W/kg
Maximum value of SAR (measured) = 0.542 W/kg



0 dB = 0.559 W/kg

LTE Band 5_10MHz_QPSK_1RB_25Offset_Back Side_10mm_Ch20450

Communication System: UID 0, LTE (0); Frequency: 829 MHz; Duty Cycle: 1:1

Medium: MSL_835 Medium parameters used: $f = 829$ MHz; $\sigma = 0.974$ S/m; $\epsilon_r = 55.761$; $\rho = 1000$ kg/m³

Ambient Temperature : 23.3 °C; Liquid Temperature : 22.6 °C

DASY5 Configuration:

- Probe: EX3DV4 - SN3823; ConvF(9.24, 9.24, 9.24); Calibrated: 2018.11.12;
- Sensor-Surface: 4mm (Mechanical Surface Detection)
- Electronics: DAE4 Sn480; Calibrated: 2019.04.11
- Phantom: SAM 2; Type: QD000P40CC; Serial: TP:1464
- Measurement SW: DASY52, Version 52.8 (8); SEMCAD X Version 14.6.10 (7331)

Ch20450/Area Scan (81x161x1): Interpolated grid: dx=1.500 mm, dy=1.500 mm

Maximum value of SAR (interpolated) = 0.318 W/kg

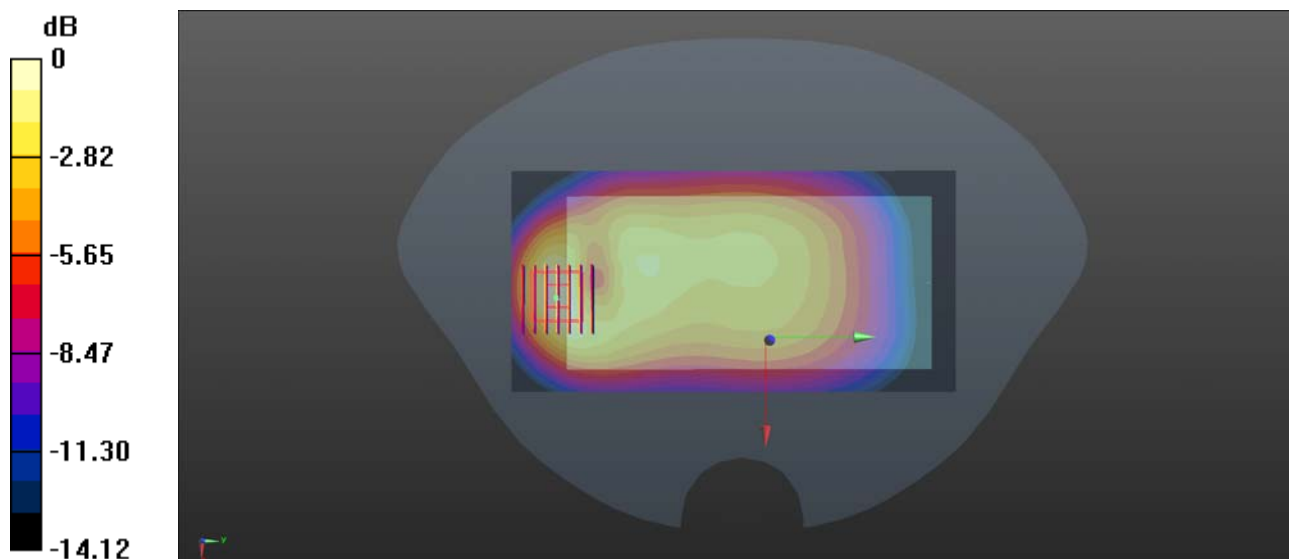
Ch20450/Zoom Scan (7x7x7)/Cube 0: Measurement grid: dx=8mm, dy=8mm, dz=5mm

Reference Value = 13.22 V/m; Power Drift = -0.01 dB

Peak SAR (extrapolated) = 0.512 W/kg

SAR(1 g) = 0.292 W/kg; SAR(10 g) = 0.163 W/kg

Maximum value of SAR (measured) = 0.327 W/kg



0 dB = 0.318 W/kg

LTE Band 40_10MHz_QPSK_1RB_0Offset_Back Side_10mm_Ch38750

Communication System: UID 0, LTE (0); Frequency: 2310 MHz; Duty Cycle: 1:1

Medium: MSL_2300 Medium parameters used: $f = 2310$ MHz; $\sigma = 1.691$ S/m; $\epsilon_r = 53.432$; $\rho = 1000$ kg/m³

Ambient Temperature : 23.3 °C; Liquid Temperature : 22.5 °C

DASY5 Configuration:

- Probe: EX3DV4 - SN3823; ConvF(7.38, 7.38, 7.38); Calibrated: 2018.11.12;
- Sensor-Surface: 4mm (Mechanical Surface Detection)
- Electronics: DAE4 Sn480; Calibrated: 2019.04.11
- Phantom: SAM 1; Type: QD000P40CC; Serial: TP:1471
- Measurement SW: DASY52, Version 52.8 (8); SEMCAD X Version 14.6.10 (7331)

Ch38750/Area Scan (81x161x1): Interpolated grid: dx=1.200 mm, dy=1.200 mm

Maximum value of SAR (interpolated) = 0.246 W/kg

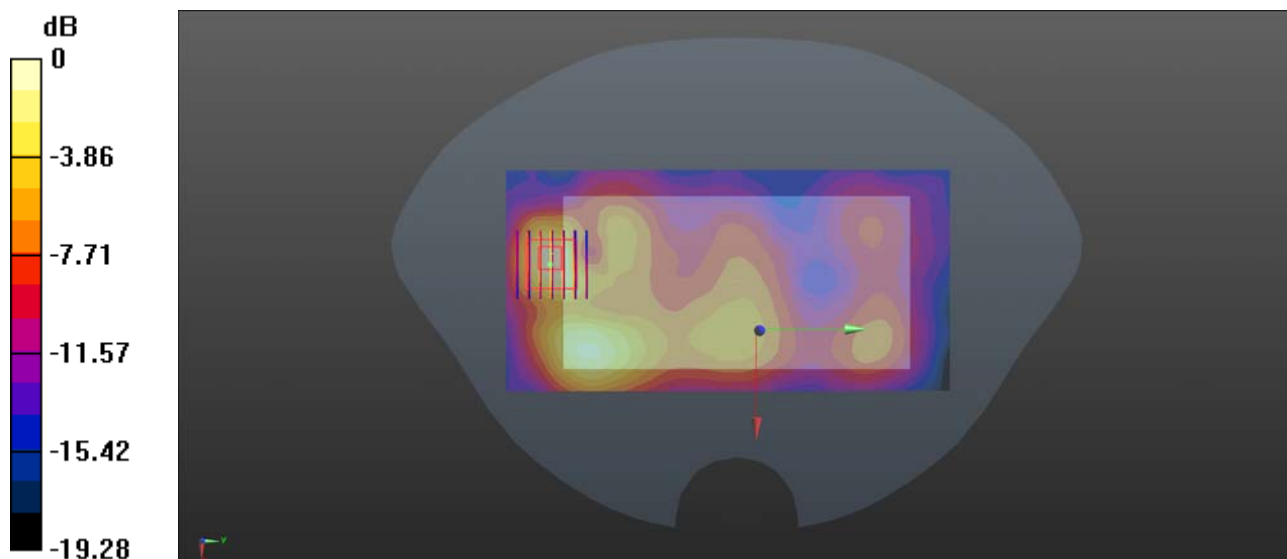
Ch38750/Zoom Scan (7x7x7)/Cube 0: Measurement grid: dx=5mm, dy=5mm, dz=5mm

Reference Value = 5.692 V/m; Power Drift = -0.15 dB

Peak SAR (extrapolated) = 0.465 W/kg

SAR(1 g) = 0.216 W/kg; SAR(10 g) = 0.096 W/kg

Maximum value of SAR (measured) = 0.250 W/kg



0 dB = 0.246 W/kg

LTE Band 40_10MHz_QPSK_1RB_49Offset_Back Side_10mm_Ch39200

Communication System: UID 0, LTE (0); Frequency: 2355 MHz; Duty Cycle: 1:1

Medium: MSL_2300 Medium parameters used: $f = 2355$ MHz; $\sigma = 1.749$ S/m; $\epsilon_r = 53.361$; $\rho = 1000$ kg/m³

Ambient Temperature : 23.3 °C; Liquid Temperature : 22.5 °C

DASY5 Configuration:

- Probe: EX3DV4 - SN3823; ConvF(7.38, 7.38, 7.38); Calibrated: 2018.11.12;
- Sensor-Surface: 4mm (Mechanical Surface Detection)
- Electronics: DAE4 Sn480; Calibrated: 2019.04.11
- Phantom: SAM 1; Type: QD000P40CC; Serial: TP:1471
- Measurement SW: DASY52, Version 52.8 (8); SEMCAD X Version 14.6.10 (7331)

Ch39200/Area Scan (81x161x1): Interpolated grid: dx=1.200 mm, dy=1.200 mm

Maximum value of SAR (interpolated) = 0.286 W/kg

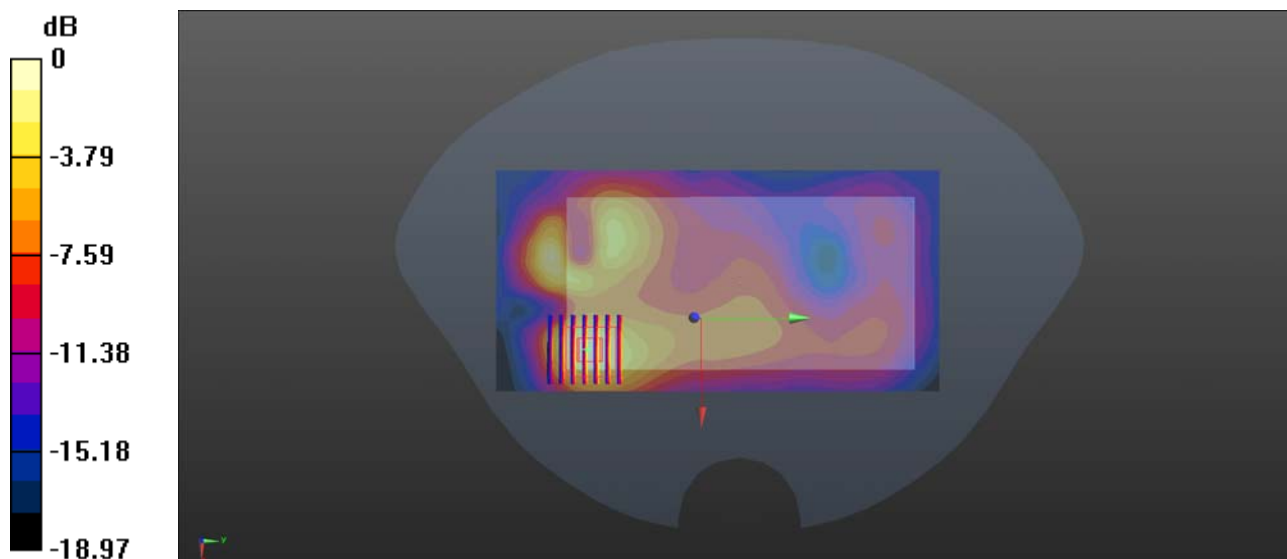
Ch39200/Zoom Scan (7x7x7)/Cube 0: Measurement grid: dx=5mm, dy=5mm, dz=5mm

Reference Value = 5.111 V/m; Power Drift = -0.11 dB

Peak SAR (extrapolated) = 0.421 W/kg

SAR(1 g) = 0.227 W/kg; SAR(10 g) = 0.111 W/kg

Maximum value of SAR (measured) = 0.261 W/kg



0 dB = 0.286 W/kg

LTE Band 41_20MHz_QPSK_1RB_49Offset_Back Side_10mm_Ch40600

Communication System: UID 0, LTE (0); Frequency: 2591 MHz; Duty Cycle: 1:1

Medium: MSL_2600 Medium parameters used: $f = 2591$ MHz; $\sigma = 2.06$ S/m; $\epsilon_r = 52.58$; $\rho = 1000$ kg/m³

Ambient Temperature : 23.2 °C; Liquid Temperature : 22.2 °C

DASY5 Configuration:

- Probe: EX3DV4 - SN3823; ConvF(7.01, 7.01, 7.01); Calibrated: 2018.11.12;
- Sensor-Surface: 4mm (Mechanical Surface Detection)
- Electronics: DAE4 Sn480; Calibrated: 2019.04.11
- Phantom: SAM 1; Type: QD000P40CC; Serial: TP:1471
- Measurement SW: DASY52, Version 52.8 (8); SEMCAD X Version 14.6.10 (7331)

Ch40600/Area Scan (81x161x1): Interpolated grid: dx=1.200 mm, dy=1.200 mm

Maximum value of SAR (interpolated) = 0.340 W/kg

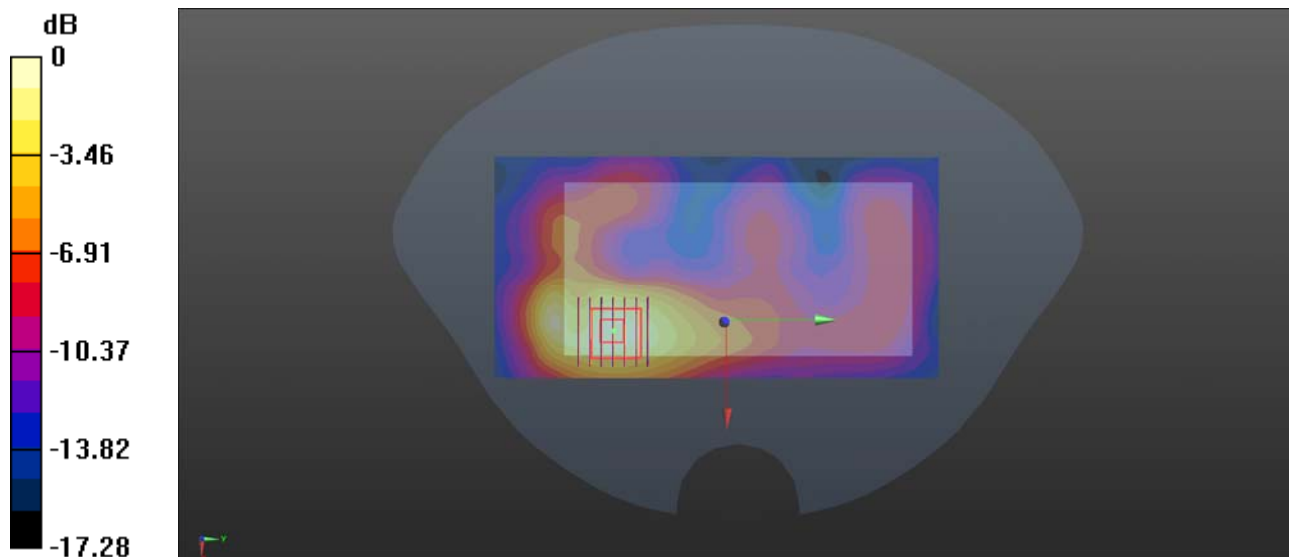
Ch40600/Zoom Scan (7x7x7)/Cube 0: Measurement grid: dx=5mm, dy=5mm, dz=5mm

Reference Value = 4.014 V/m; Power Drift = 0.13 dB

Peak SAR (extrapolated) = 0.560 W/kg

SAR(1 g) = 0.301 W/kg; SAR(10 g) = 0.158 W/kg

Maximum value of SAR (measured) = 0.331 W/kg



0 dB = 0.340 W/kg

WLAN 2.4GHz_802.11b 1Mbps Back Side_10mm_Ch6

Communication System: UID 0, WLAN 2.4GHz 802.11b (0); Frequency: 2437 MHz; Duty Cycle: 1:1
Medium: MSL_2450 Medium parameters used: $f = 2437$ MHz; $\sigma = 1.849$ S/m; $\epsilon_r = 53.049$; $\rho = 1000$ kg/m³

Ambient Temperature : 23.3 °C ; Liquid Temperature : 22.5 °C

DASY5 Configuration:

- Probe: EX3DV4 - SN3823; ConvF(7.15, 7.15, 7.15); Calibrated: 2018.11.12;
- Sensor-Surface: 4mm (Mechanical Surface Detection)
- Electronics: DAE4 Sn480; Calibrated: 2019.04.11
- Phantom: SAM 1; Type: QD000P40CC; Serial: TP:1471
- Measurement SW: DASY52, Version 52.8 (8); SEMCAD X Version 14.6.10 (7331)

Ch6/Area Scan (81x151x1): Interpolated grid: dx=1.200 mm, dy=1.200 mm

Maximum value of SAR (interpolated) = 0.366 W/kg

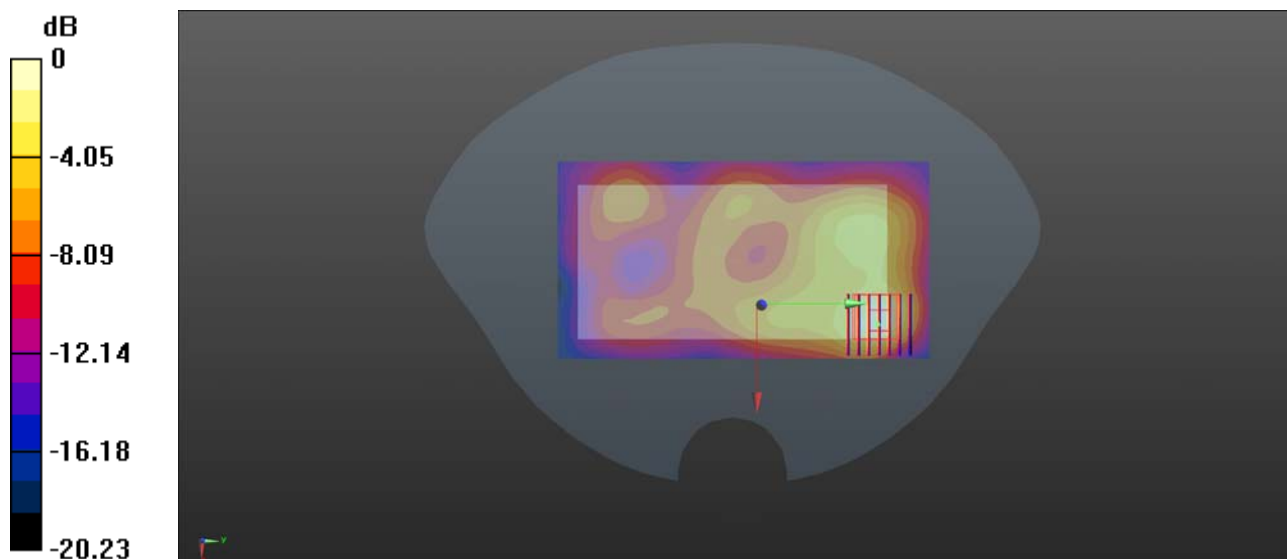
Ch6/Zoom Scan (7x7x7)/Cube 0: Measurement grid: dx=5mm, dy=5mm, dz=5mm

Reference Value = 5.283 V/m; Power Drift = 0.07 dB

Peak SAR (extrapolated) = 0.657 W/kg

SAR(1 g) = 0.313 W/kg; SAR(10 g) = 0.148 W/kg

Maximum value of SAR (measured) = 0.351 W/kg



0 dB = 0.366 W/kg

WLAN 2.4GHz_802.11b 1Mbps_Right Tight_Ch6_Repeated

Communication System: UID 0, WLAN 2.4GHz 802.11b (0); Frequency: 2437 MHz; Duty Cycle: 1:1
Medium: HSL_2450 Medium parameters used: $f = 2437$ MHz; $\sigma = 1.828$ S/m; $\epsilon_r = 40.968$; $\rho = 1000$ kg/m³

Ambient Temperature : 23.3 °C; Liquid Temperature : 22.7 °C

DASY5 Configuration:

- Probe: EX3DV4 - SN3823; ConvF(7.34, 7.34, 7.34); Calibrated: 2018.11.12;
- Sensor-Surface: 4mm (Mechanical Surface Detection)
- Electronics: DAE4 Sn480; Calibrated: 2019.04.11
- Phantom: SAM 2; Type: QD000P40CC; Serial: TP:1464
- Measurement SW: DASY52, Version 52.8 (8); SEMCAD X Version 14.6.10 (7331)

Ch6/Area Scan (81x131x1): Interpolated grid: dx=1.200 mm, dy=1.200 mm

Maximum value of SAR (interpolated) = 1.05 W/kg

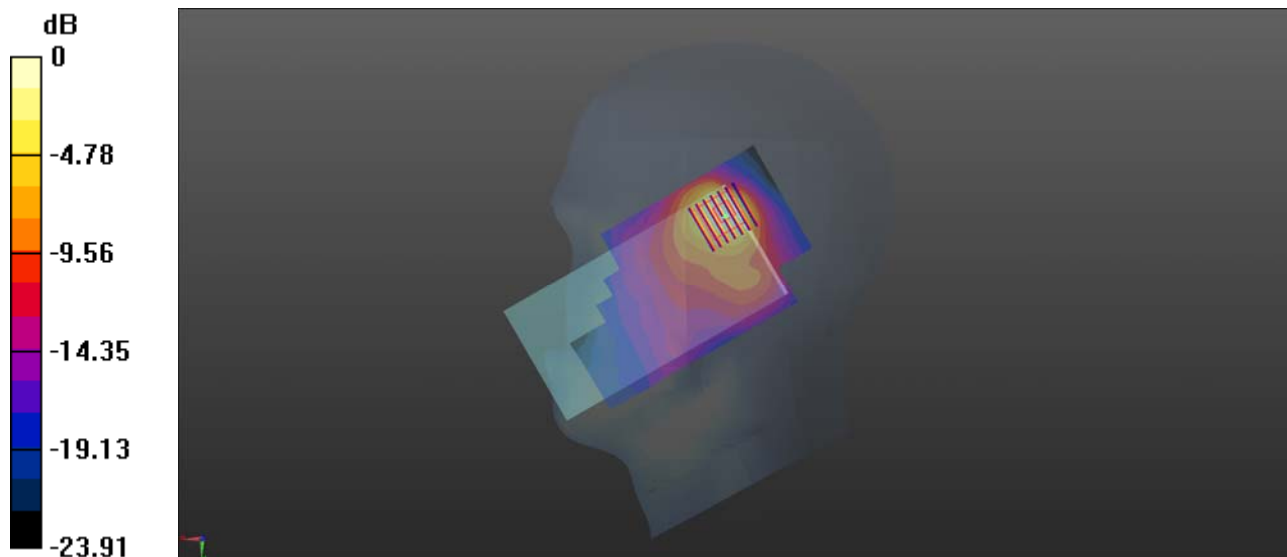
Ch6/Zoom Scan (7x7x7)/Cube 0: Measurement grid: dx=5mm, dy=5mm, dz=5mm

Reference Value = 10.43 V/m; Power Drift = -0.02 dB

Peak SAR (extrapolated) = 2.23 W/kg

SAR(1 g) = 0.879 W/kg; SAR(10 g) = 0.392 W/kg

Maximum value of SAR (measured) = 0.941 W/kg



0 dB = 1.05 W/kg