



Appendix B

Detailed Test Results

1. GSM
GSM850 for Head & Body
GSM1900 for Head & Body
2. WCDMA
WCDMA Band II for Head & Body
WCDMA Band IV for Head & Body
WCDMA Band V for Head & Body
3.WIFI
LTE Band 2 for Head & Body
LTE Band 5 for Head & Body
LTE Band 7 for Head & Body
LTE Band 12 for Head & Body
LTE Band 13 for Head & Body
LTE Band 66 for Head & Body
4.WIFI
WIFI 2.4G for Head & Body
5.BT
BT for Head

Test Laboratory: SGS-SAR Lab

LM-X430FMW GSM 850 GSM 190CH Right cheek

DUT: LM-X430FMW; Type: Mobile Handset; Serial: 907HUSQ0000006

Communication System: UID 0, GSM Only Communication System (0); Frequency: 836.6 MHz; Duty Cycle: 1:8.3

Medium: HSL835; Medium parameters used: $f = 837$ MHz; $\sigma = 0.941$ S/m; $\epsilon_r = 42.132$; $\rho = 1000$ kg/m³

Phantom section: Right Section

DASY 5 Configuration:

- Probe: EX3DV4 - SN3793; ConvF(9.04, 9.04, 9.04); Calibrated: 2019-03-25;
- Sensor-Surface: 1.4mm (Mechanical Surface Detection)
- Electronics: DAE3 Sn414; Calibrated: 2018-12-03
- Phantom: SAM 2; Type: SAM; Serial: 1913
- DASY52 52.8.8(1222); SEMCAD X 14.6.10(7331)

Configuration/Head/Area Scan (8x13x1): Measurement grid: dx=15mm, dy=15mm
Maximum value of SAR (measured) = 0.186 W/kg

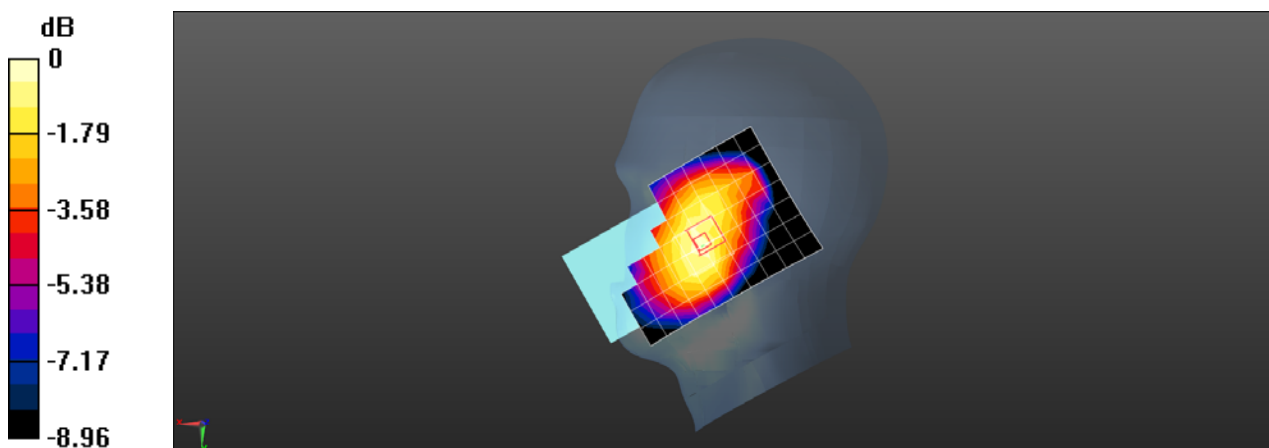
Configuration/Head/Zoom Scan (5x5x7)/Cube 0: Measurement grid: dx=8mm, dy=8mm, dz=5mm

Reference Value = 6.846 V/m; Power Drift = 0.02 dB

Peak SAR (extrapolated) = 0.212 W/kg

SAR(1 g) = 0.144 W/kg; SAR(10 g) = 0.112 W/kg

Maximum value of SAR (measured) = 0.187 W/kg



0 dB = 0.187 W/kg = -7.28 dBW/kg

Test Laboratory: SGS-SAR Lab

LM-X430FMW GSM 850 GPRS 4TS 190CH Back side 10mm

DUT: LM-X430FMW; Type: Mobile Handset; Serial: 907HUCU0000003

Communication System: UID 0, GPRS/EGPRS Mode(4up) Communication System (0); Frequency: 836.6 MHz; Duty Cycle: 1:2.075

Medium: HSL835; Medium parameters used: $f = 837$ MHz; $\sigma = 0.941$ S/m; $\epsilon_r = 42.132$; $\rho = 1000$ kg/m³

Phantom section: Flat Section

DASY 5 Configuration:

- Probe: EX3DV4 - SN3793; ConvF(9.04, 9.04, 9.04); Calibrated: 2019-03-25;
- Sensor-Surface: 1.4mm (Mechanical Surface Detection)
- Electronics: DAE3 Sn414; Calibrated: 2018-12-03
- Phantom: SAM 2; Type: SAM; Serial: 1913
- DASY52 52.8.8(1222); SEMCAD X 14.6.10(7331)

Configuration/Body/Area Scan (8x13x1): Measurement grid: dx=15mm, dy=15mm
Maximum value of SAR (measured) = 0.523 W/kg

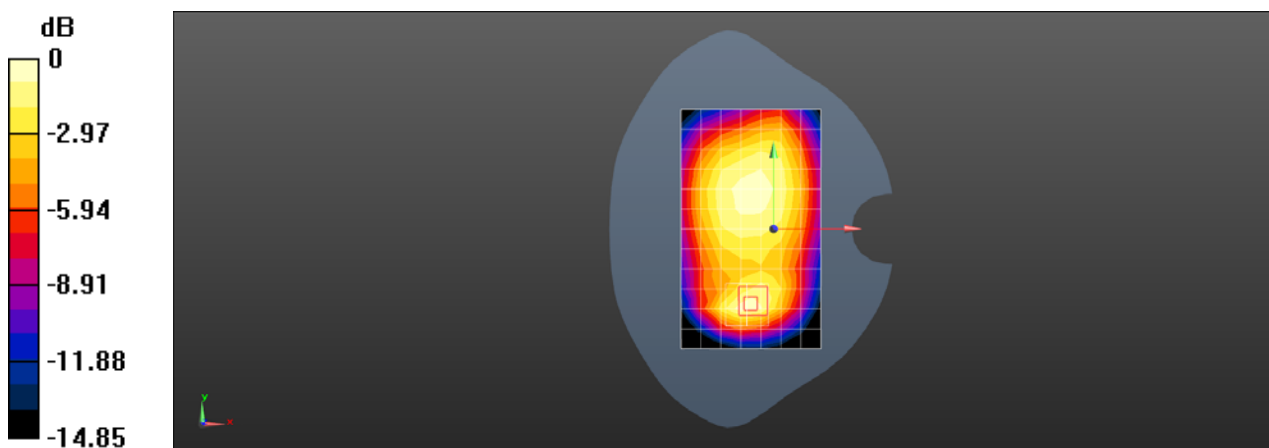
Configuration/Body/Zoom Scan (5x5x7)/Cube 0: Measurement grid: dx=8mm, dy=8mm, dz=5mm

Reference Value = 18.80 V/m; Power Drift = -0.01 dB

Peak SAR (extrapolated) = 0.702 W/kg

SAR(1 g) = 0.369 W/kg; SAR(10 g) = 0.220 W/kg

Maximum value of SAR (measured) = 0.566 W/kg



0 dB = 0.566 W/kg = -2.47 dBW/kg

Test Laboratory: SGS-SAR Lab

LM-X430FMW GSM1900 GSM 661CH Left cheek

DUT: LM-X430FMW; Type: Mobile Handset; Serial: 907HUSQ0000006

Communication System: UID 0, GSM Only Communication System (0); Frequency: 1880 MHz; Duty Cycle: 1:8.3

Medium: HSL1900; Medium parameters used: $f = 1880$ MHz; $\sigma = 1.368$ S/m; $\epsilon_r = 40.206$; $\rho = 1000$ kg/m³

Phantom section: Left Section

DASY 5 Configuration:

- Probe: EX3DV4 - SN3923; ConvF(8.51, 8.51, 8.51); Calibrated: 2018-09-30;
- Sensor-Surface: 1.4mm (Mechanical Surface Detection)
- Electronics: DAE4 Sn1428; Calibrated: 2019-01-11
- Phantom: SAM 3; Type: SAM; Serial: 1912
- DASY52 52.8.8(1222); SEMCAD X 14.6.10(7331)

Configuration/Head/Area Scan (8x13x1): Measurement grid: dx=15mm, dy=15mm
Maximum value of SAR (measured) = 0.128 W/kg

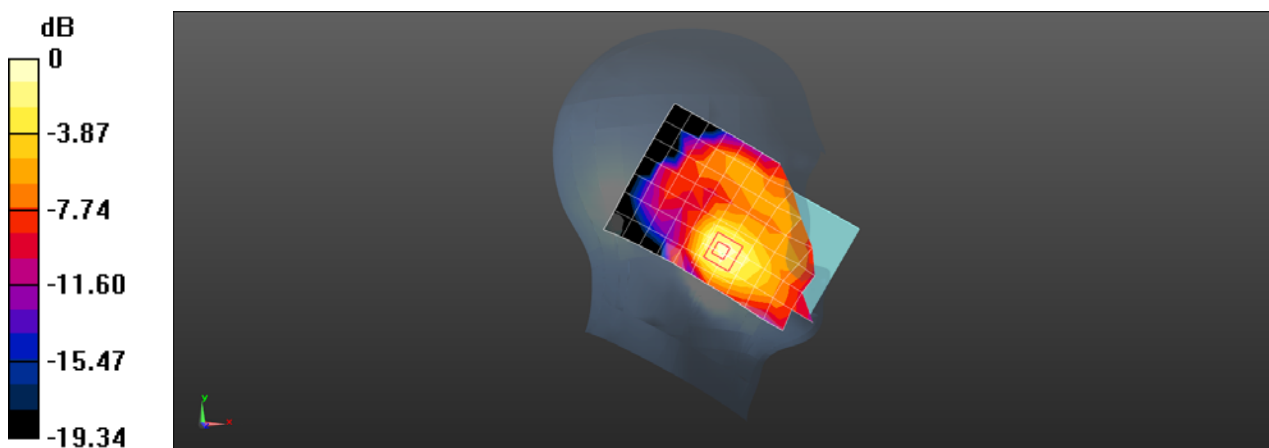
Configuration/Head/Zoom Scan (5x5x7)/Cube 0: Measurement grid: dx=8mm, dy=8mm, dz=5mm

Reference Value = 3.045 V/m; Power Drift = 0.07 dB

Peak SAR (extrapolated) = 0.174 W/kg

SAR(1 g) = 0.106 W/kg; SAR(10 g) = 0.063 W/kg

Maximum value of SAR (measured) = 0.148 W/kg



Test Laboratory: SGS-SAR Lab

LM-X430FMW GSM1900 GPRS 4TS 661CH Back side 10mm

DUT: LM-X430FMW; Type: Mobile Handset; Serial: 907HUSQ0000006

Communication System: UID 0, GPRS/EGPRS Mode(4up) Communication System (0); Frequency: 1880 MHz; Duty Cycle: 1:2.075

Medium: HSL1900; Medium parameters used: $f = 1880$ MHz; $\sigma = 1.368$ S/m; $\epsilon_r = 40.206$; $\rho = 1000$ kg/m³

Phantom section: Flat Section

DASY 5 Configuration:

- Probe: EX3DV4 - SN3923; ConvF(8.51, 8.51, 8.51); Calibrated: 2018-09-30;
- Sensor-Surface: 1.4mm (Mechanical Surface Detection)
- Electronics: DAE4 Sn1428; Calibrated: 2019-01-11
- Phantom: SAM 3; Type: SAM; Serial: 1912
- DASY52 52.8.8(1222); SEMCAD X 14.6.10(7331)

Configuration/Body/Area Scan (8x13x1): Measurement grid: dx=15mm, dy=15mm
Maximum value of SAR (measured) = 0.738 W/kg

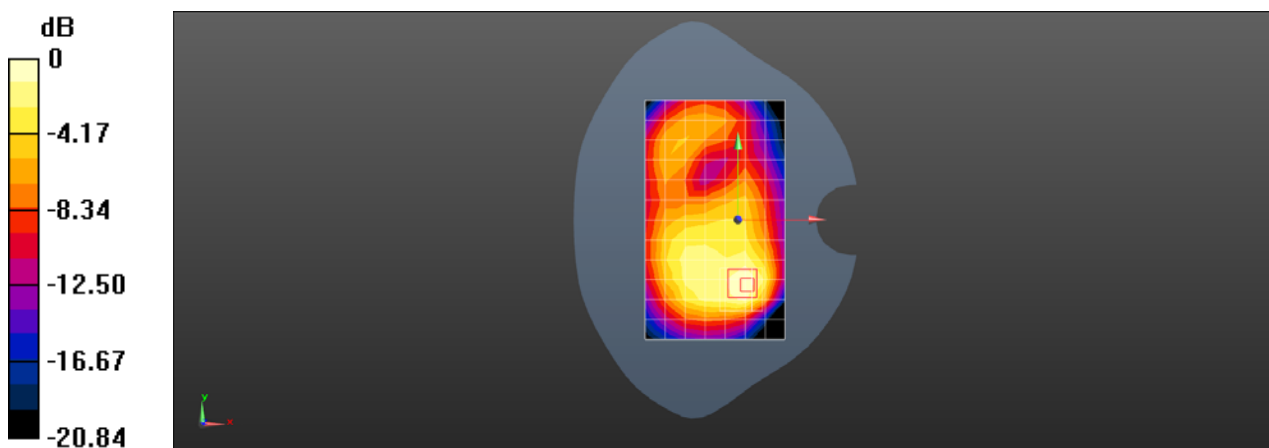
Configuration/Body/Zoom Scan (5x5x7)/Cube 0: Measurement grid: dx=8mm, dy=8mm, dz=5mm

Reference Value = 12.39 V/m; Power Drift = -0.07 dB

Peak SAR (extrapolated) = 0.938 W/kg

SAR(1 g) = 0.498 W/kg; SAR(10 g) = 0.277 W/kg

Maximum value of SAR (measured) = 0.715 W/kg



Test Laboratory: SGS-SAR Lab

LM-X430FMW WCDMA Band II 9400CH Left cheek

DUT: LM-X430FMW; Type: Mobile Handset; Serial: 907HUQ0000006

Communication System: UID 0, WCDMA (0); Frequency: 1880 MHz; Duty Cycle: 1:1

Medium: HSL1900; Medium parameters used: $f = 1880$ MHz; $\sigma = 1.368$ S/m; $\epsilon_r = 40.206$; $\rho = 1000$ kg/m³

Phantom section: Left Section

DASY 5 Configuration:

- Probe: EX3DV4 - SN3923; ConvF(8.51, 8.51, 8.51); Calibrated: 2018-09-30;
- Sensor-Surface: 1.4mm (Mechanical Surface Detection)
- Electronics: DAE4 Sn1428; Calibrated: 2019-01-11
- Phantom: SAM 3; Type: SAM; Serial: 1912
- DASY52 52.8.8(1222); SEMCAD X 14.6.10(7331)

Configuration/Head/Area Scan (8x13x1): Measurement grid: dx=15mm, dy=15mm
Maximum value of SAR (measured) = 0.261 W/kg

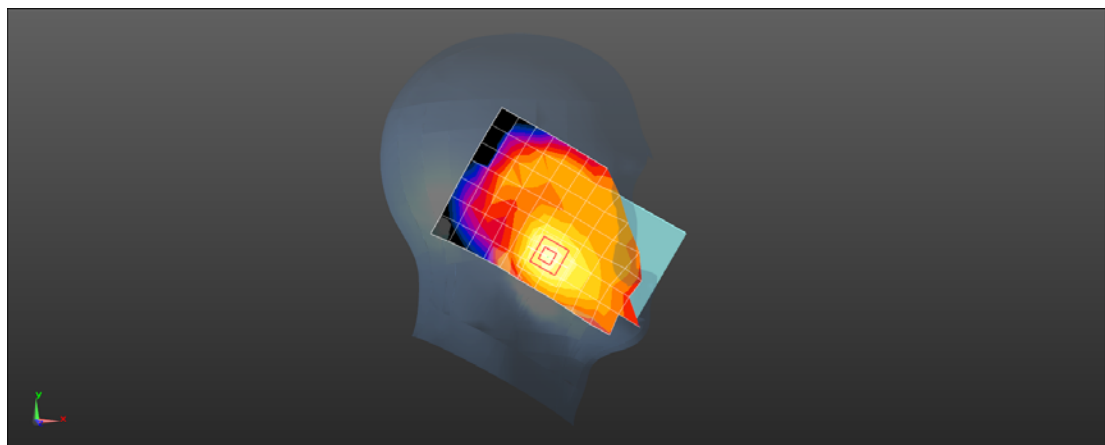
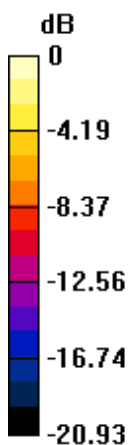
Configuration/Head/Zoom Scan (5x5x7)/Cube 0: Measurement grid: dx=8mm, dy=8mm, dz=5mm

Reference Value = 4.519 V/m; Power Drift = 0.02 dB

Peak SAR (extrapolated) = 0.359 W/kg

SAR(1 g) = 0.222 W/kg; SAR(10 g) = 0.137 W/kg

Maximum value of SAR (measured) = 0.310 W/kg



0 dB = 0.310 W/kg = -5.09 dBW/kg

Test Laboratory: SGS-SAR Lab

LM-X430FMW WCDMA Band II 9262CH Back side 10mm

DUT: LM-X430FMW; Type: Mobile Handset; Serial: 907HUSQ0000006

Communication System: UID 0, WCDMA (0); Frequency: 1852.4 MHz; Duty Cycle: 1:1

Medium: HSL1900; Medium parameters used (interpolated): $f = 1852.4$ MHz; $\sigma = 1.356$ S/m; $\epsilon_r = 40.22$; $\rho = 1000$ kg/m³

Phantom section: Flat Section

DASY 5 Configuration:

- Probe: EX3DV4 - SN3923; ConvF(8.51, 8.51, 8.51); Calibrated: 2018-09-30;
- Sensor-Surface: 1.4mm (Mechanical Surface Detection)
- Electronics: DAE4 Sn1428; Calibrated: 2019-01-11
- Phantom: SAM 3; Type: SAM; Serial: 1912
- DASY52 52.8.8(1222); SEMCAD X 14.6.10(7331)

Configuration/Head/Area Scan (8x13x1): Measurement grid: dx=15mm, dy=15mm

Info: [Interpolated medium parameters used for SAR evaluation.](#)

Maximum value of SAR (measured) = 0.947 W/kg

Configuration/Head/Zoom Scan (5x5x7)/Cube 0: Measurement grid: dx=8mm, dy=8mm, dz=5mm

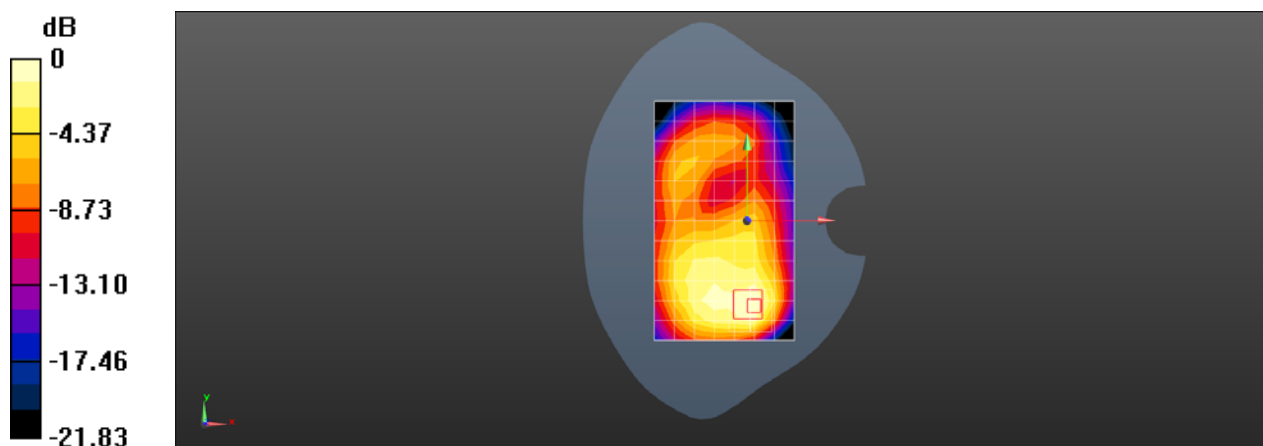
Reference Value = 10.82 V/m; Power Drift = -0.15 dB

Peak SAR (extrapolated) = 1.19 W/kg

SAR(1 g) = 0.629 W/kg; SAR(10 g) = 0.357 W/kg

Info: [Interpolated medium parameters used for SAR evaluation.](#)

Maximum value of SAR (measured) = 0.894 W/kg



0 dB = 0.894 W/kg = -0.49 dBW/kg

Test Laboratory: SGS-SAR Lab

LM-X430FMW WCDMA Band IV 1412CH Right cheek

DUT: LM-X430FMW; Type: Mobile Handset; Serial: 907HUYN0000002

Communication System: UID 0, WCDMA (0); Frequency: 1732.4 MHz; Duty Cycle: 1:1

Medium: HSL1750; Medium parameters used (interpolated): $f = 1732.4$ MHz; $\sigma = 1.301$ S/m; $\epsilon_r = 40.466$; $\rho = 1000$ kg/m³

Phantom section: Right Section

DASY 5 Configuration:

- Probe: EX3DV4 - SN3923; ConvF(8.92, 8.92, 8.92); Calibrated: 2018-09-30;
- Sensor-Surface: 1.4mm (Mechanical Surface Detection)
- Electronics: DAE4 Sn1428; Calibrated: 2019-01-11
- Phantom: SAM 4; Type: SAM; Serial: 1640
- DASY52 52.8.8(1222); SEMCAD X 14.6.10(7331)

Configuration/Head/Area Scan (8x13x1): Measurement grid: dx=15mm, dy=15mm

Info: [Interpolated medium parameters used for SAR evaluation.](#)

Maximum value of SAR (measured) = 0.144 W/kg

Configuration/Head/Zoom Scan (5x5x7)/Cube 0: Measurement grid: dx=8mm, dy=8mm, dz=5mm

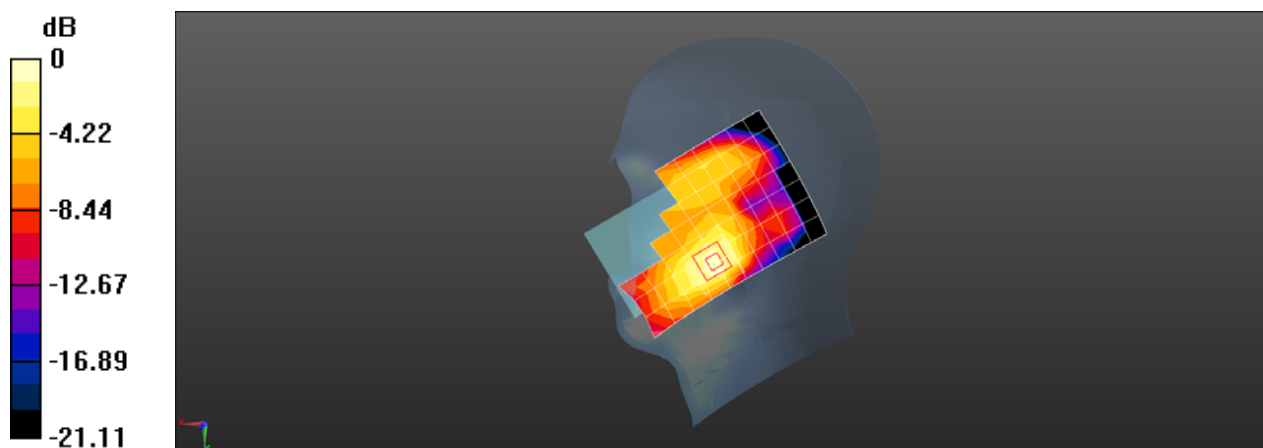
Reference Value = 2.131 V/m; Power Drift = 0.13 dB

Peak SAR (extrapolated) = 0.193 W/kg

SAR(1 g) = 0.127 W/kg; SAR(10 g) = 0.081 W/kg

Info: [Interpolated medium parameters used for SAR evaluation.](#)

Maximum value of SAR (measured) = 0.171 W/kg



0 dB = 0.171 W/kg = -7.67 dBW/kg

Test Laboratory: SGS-SAR Lab

LM-X430FMW WCDMA Band IV 1412CH Back side 10mm

DUT: LM-X430FMW; Type: Mobile Handset; Serial: 907HUYN0000002

Communication System: UID 0, WCDMA (0); Frequency: 1732.4 MHz; Duty Cycle: 1:1

Medium: HSL1750; Medium parameters used (interpolated): $f = 1732.4$ MHz; $\sigma = 1.301$ S/m; $\epsilon_r = 40.466$; $\rho = 1000$ kg/m³

Phantom section: Flat Section

DASY 5 Configuration:

- Probe: EX3DV4 - SN3923; ConvF(8.92, 8.92, 8.92); Calibrated: 2018-09-30;
- Sensor-Surface: 1.4mm (Mechanical Surface Detection)
- Electronics: DAE4 Sn1428; Calibrated: 2019-01-11
- Phantom: SAM 4; Type: SAM; Serial: 1640
- DASY52 52.8.8(1222); SEMCAD X 14.6.10(7331)

Configuration/Body/Area Scan (8x13x1): Measurement grid: dx=15mm, dy=15mm

Info: [Interpolated medium parameters used for SAR evaluation.](#)

Maximum value of SAR (measured) = 0.614 W/kg

Configuration/Body/Zoom Scan (5x5x7)/Cube 0: Measurement grid: dx=8mm, dy=8mm, dz=5mm

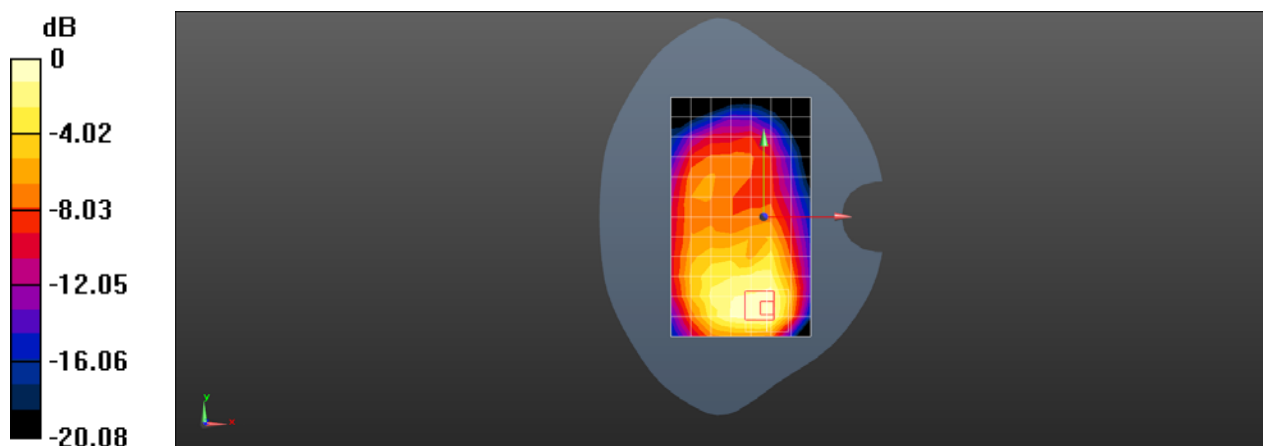
Reference Value = 8.033 V/m; Power Drift = 0.04 dB

Peak SAR (extrapolated) = 0.810 W/kg

SAR(1 g) = 0.445 W/kg; SAR(10 g) = 0.266 W/kg

Info: [Interpolated medium parameters used for SAR evaluation.](#)

Maximum value of SAR (measured) = 0.660 W/kg



0 dB = 0.660 W/kg = -1.80 dBW/kg

Test Laboratory: SGS-SAR Lab

LM-X430FMW WCDMA Band V 4182CH Right cheek

DUT: LM-X430FMW; Type: Mobile Handset; Serial: 907HUSQ0000006

Communication System: UID 0, WCDMA (0); Frequency: 836.4 MHz; Duty Cycle: 1:1

Medium: HSL835; Medium parameters used (interpolated): $f = 836.4$ MHz; $\sigma = 0.94$ S/m; $\epsilon_r = 42.136$; $\rho = 1000$ kg/m³

Phantom section: Right Section

DASY 5 Configuration:

- Probe: EX3DV4 - SN3793; ConvF(9.04, 9.04, 9.04); Calibrated: 2019-03-25;
- Sensor-Surface: 1.4mm (Mechanical Surface Detection)
- Electronics: DAE3 Sn414; Calibrated: 2018-12-03
- Phantom: SAM 2; Type: SAM; Serial: 1913
- DASY52 52.8.8(1222); SEMCAD X 14.6.10(7331)

Configuration/Head/Area Scan (8x13x1): Measurement grid: dx=15mm, dy=15mm

[Info: Interpolated medium parameters used for SAR evaluation.](#)

Maximum value of SAR (measured) = 0.233 W/kg

Configuration/Head/Zoom Scan (5x5x7)/Cube 0: Measurement grid: dx=8mm, dy=8mm, dz=5mm

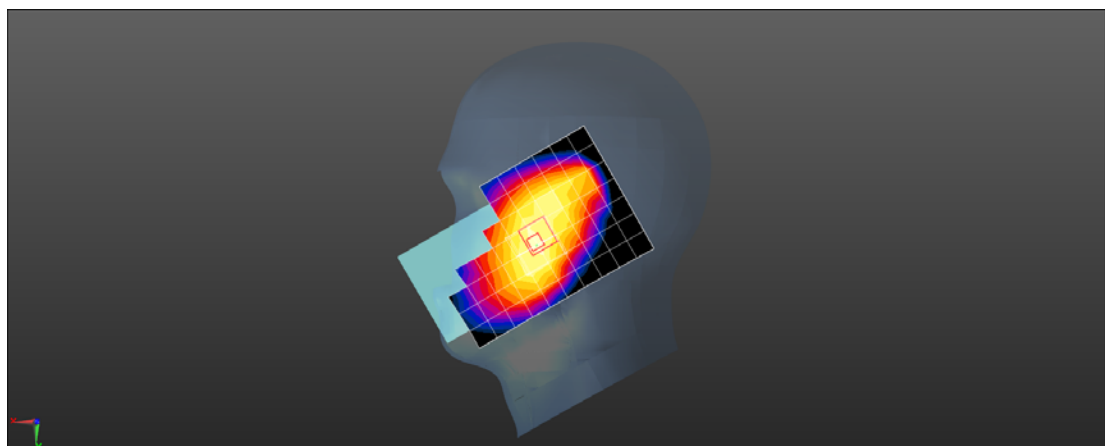
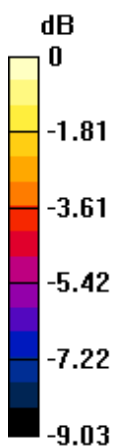
Reference Value = 8.849 V/m; Power Drift = 0.05 dB

Peak SAR (extrapolated) = 0.264 W/kg

SAR(1 g) = 0.186 W/kg; SAR(10 g) = 0.145 W/kg

[Info: Interpolated medium parameters used for SAR evaluation.](#)

Maximum value of SAR (measured) = 0.236 W/kg



0 dB = 0.236 W/kg = -6.27 dBW/kg

Test Laboratory: SGS-SAR Lab

LM-X430FMW WCDMA Band V 4182CH Back side 10mm

DUT: LM-X430FMW; Type: Mobile Handset; Serial: 907HUSQ0000006

Communication System: UID 0, WCDMA (0); Frequency: 836.4 MHz; Duty Cycle: 1:1

Medium: HSL835; Medium parameters used (interpolated): $f = 836.4$ MHz; $\sigma = 0.94$ S/m; $\epsilon_r = 42.136$; $\rho = 1000$ kg/m³

Phantom section: Flat Section

DASY 5 Configuration:

- Probe: EX3DV4 - SN3793; ConvF(9.04, 9.04, 9.04); Calibrated: 2019-03-25;
- Sensor-Surface: 1.4mm (Mechanical Surface Detection)
- Electronics: DAE3 Sn414; Calibrated: 2018-12-03
- Phantom: SAM 2; Type: SAM; Serial: 1913
- DASY52 52.8.8(1222); SEMCAD X 14.6.10(7331)

Configuration/Body/Area Scan (8x13x1): Measurement grid: dx=15mm, dy=15mm

[Info: Interpolated medium parameters used for SAR evaluation.](#)

Maximum value of SAR (measured) = 0.407 W/kg

Configuration/Body/Zoom Scan (5x5x7)/Cube 0: Measurement grid: dx=8mm, dy=8mm, dz=5mm

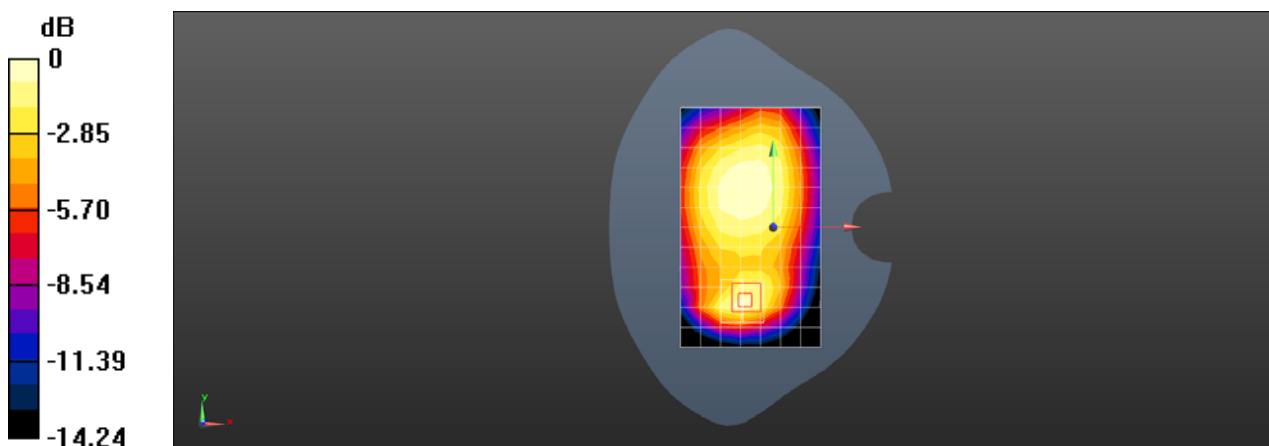
Reference Value = 16.51 V/m; Power Drift = -0.06 dB

Peak SAR (extrapolated) = 0.520 W/kg

SAR(1 g) = 0.288 W/kg; SAR(10 g) = 0.171 W/kg

[Info: Interpolated medium parameters used for SAR evaluation.](#)

Maximum value of SAR (measured) = 0.426 W/kg



0 dB = 0.426 W/kg = -3.71 dBW/kg

Test Laboratory: SGS-SAR Lab

LM-X430FMW LTE Band 2 20M QPSK 1RB50 18700CH Left cheek

DUT: LM-X430FMW; Type: Mobile Handset; Serial: 907HUCU0000003

Communication System: UID 0, LTE-FDD BW 20MHz (0); Frequency: 1860 MHz; Duty Cycle: 1:1

Medium: HSL1900; Medium parameters used: $f = 1860$ MHz; $\sigma = 1.359$ S/m; $\epsilon_r = 40.216$; $\rho = 1000$ kg/m³

Phantom section: Left Section

DASY 5 Configuration:

- Probe: EX3DV4 - SN3923; ConvF(8.51, 8.51, 8.51); Calibrated: 2018-09-30;
- Sensor-Surface: 1.4mm (Mechanical Surface Detection)
- Electronics: DAE4 Sn1428; Calibrated: 2019-01-11
- Phantom: SAM 3; Type: SAM; Serial: 1912
- DASY52 52.8.8(1222); SEMCAD X 14.6.10(7331)

Configuration/Head/Area Scan (8x13x1): Measurement grid: dx=15mm, dy=15mm
Maximum value of SAR (measured) = 0.241 W/kg

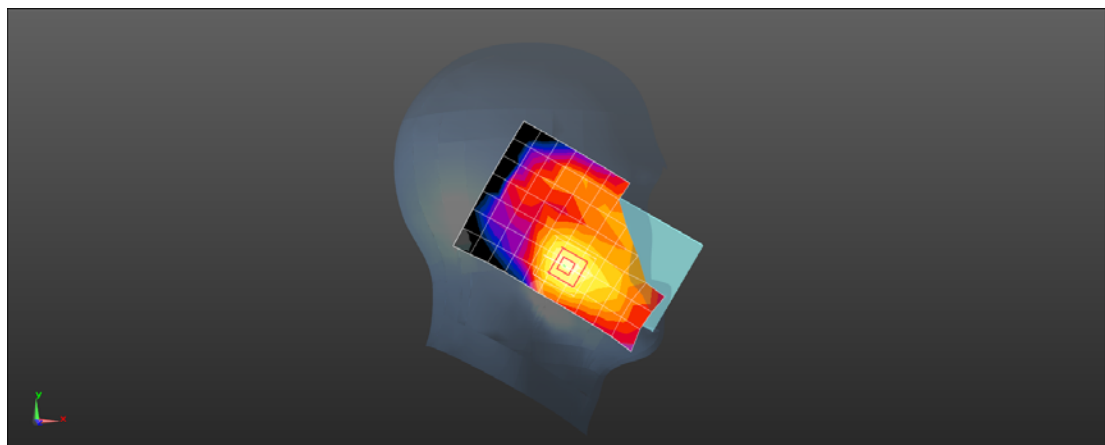
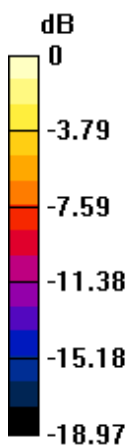
Configuration/Head/Zoom Scan (5x5x7)/Cube 0: Measurement grid: dx=8mm, dy=8mm, dz=5mm

Reference Value = 4.101 V/m; Power Drift = 0.05 dB

Peak SAR (extrapolated) = 0.348 W/kg

SAR(1 g) = 0.208 W/kg; SAR(10 g) = 0.126 W/kg

Maximum value of SAR (measured) = 0.294 W/kg



0 dB = 0.294 W/kg = -5.32 dBW/kg

Test Laboratory: SGS-SAR Lab

LM-X430FMW LTE Band 2 20M QPSK 1RB0 19100CH Back side 10mm

DUT: LM-X430FMW; Type: Mobile Handset; Serial: 907HUSQ0000006

Communication System: UID 0, LTE-FDD BW 20MHz (0); Frequency: 1900 MHz; Duty Cycle: 1:1

Medium: HSL1900; Medium parameters used: $f = 1900$ MHz; $\sigma = 1.376$ S/m; $\epsilon_r = 40.173$; $\rho = 1000$ kg/m³

Phantom section: Flat Section

DASY 5 Configuration:

- Probe: EX3DV4 - SN3923; ConvF(8.51, 8.51, 8.51); Calibrated: 2018-09-30;
- Sensor-Surface: 1.4mm (Mechanical Surface Detection)
- Electronics: DAE4 Sn1428; Calibrated: 2019-01-11
- Phantom: SAM 3; Type: SAM; Serial: 1912
- DASY52 52.8.8(1222); SEMCAD X 14.6.10(7331)

Configuration/Body/Area Scan (8x13x1): Measurement grid: dx=15mm, dy=15mm

Maximum value of SAR (measured) = 1.01 W/kg

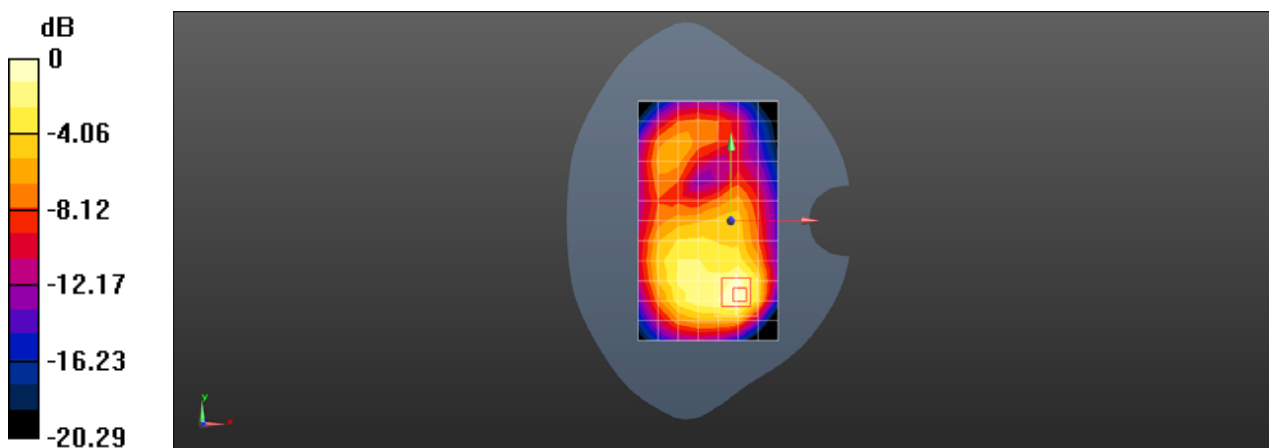
Configuration/Body/Zoom Scan (5x5x7)/Cube 0: Measurement grid: dx=8mm, dy=8mm, dz=5mm

Reference Value = 13.06 V/m; Power Drift = -0.01 dB

Peak SAR (extrapolated) = 1.31 W/kg

SAR(1 g) = 0.684 W/kg; SAR(10 g) = 0.373 W/kg

Maximum value of SAR (measured) = 0.997 W/kg



Test Laboratory: SGS-SAR Lab

LM-X430FMW LTE Band 5 10M QPSK 1RB0 20600CH Right cheek

DUT: LM-X430FMW; Type: Mobile Handset; Serial: 907HUSQ0000006

Communication System: UID 0, LTE-FDD BW 10MHZ (0); Frequency: 844 MHz;Duty Cycle: 1:1

Medium: HSL835;Medium parameters used: $f = 844$ MHz; $\sigma = 0.945$ S/m; $\epsilon_r = 42.091$; $\rho = 1000$ kg/m³

Phantom section: Right Section

DASY 5 Configuration:

- Probe: EX3DV4 - SN3793; ConvF(9.04, 9.04, 9.04); Calibrated: 2019-03-25;
- Sensor-Surface: 1.4mm (Mechanical Surface Detection)
- Electronics: DAE3 Sn414; Calibrated: 2018-12-03
- Phantom: SAM 2; Type: SAM; Serial: 1913
- DASY52 52.8.8(1222); SEMCAD X 14.6.10(7331)

Configuration/Head/Area Scan (8x13x1): Measurement grid: dx=15mm, dy=15mm
Maximum value of SAR (measured) = 0.214 W/kg

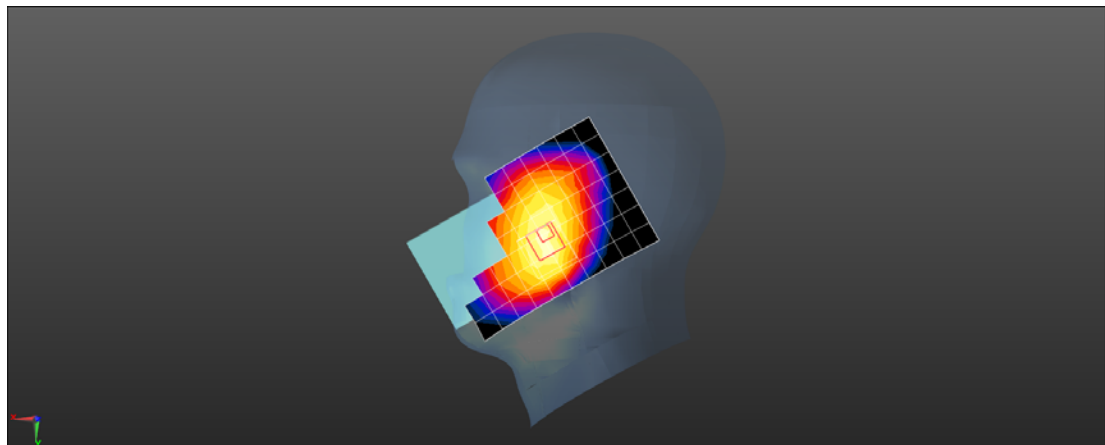
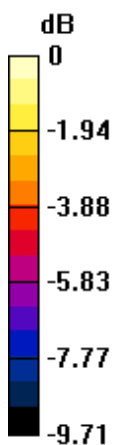
Configuration/Head/Zoom Scan (5x5x7)/Cube 0: Measurement grid: dx=8mm, dy=8mm, dz=5mm

Reference Value = 5.727 V/m; Power Drift = 0.14 dB

Peak SAR (extrapolated) = 0.260 W/kg

SAR(1 g) = 0.174 W/kg; SAR(10 g) = 0.131 W/kg

Maximum value of SAR (measured) = 0.227 W/kg



0 dB = 0.227 W/kg = -6.44 dBW/kg

Test Laboratory: SGS-SAR Lab

LM-X430FMW LTE Band 5 10M QPSK 1RB0 20600CH Back side 10mm

DUT: LM-X430FMW; Type: Mobile Handset; Serial: 907HUSQ0000006

Communication System: UID 0, LTE-FDD BW 10MHZ (0); Frequency: 844 MHz;Duty Cycle: 1:1

Medium: HSL835;Medium parameters used: $f = 844$ MHz; $\sigma = 0.945$ S/m; $\epsilon_r = 42.091$; $\rho = 1000$ kg/m³

Phantom section: Flat Section

DASY 5 Configuration:

- Probe: EX3DV4 - SN3793; ConvF(9.04, 9.04, 9.04); Calibrated: 2019-03-25;
- Sensor-Surface: 1.4mm (Mechanical Surface Detection)
- Electronics: DAE3 Sn414; Calibrated: 2018-12-03
- Phantom: SAM 2; Type: SAM; Serial: 1913
- DASY52 52.8.8(1222); SEMCAD X 14.6.10(7331)

Configuration/Body/Area Scan (8x13x1): Measurement grid: dx=15mm, dy=15mm
Maximum value of SAR (measured) = 0.424 W/kg

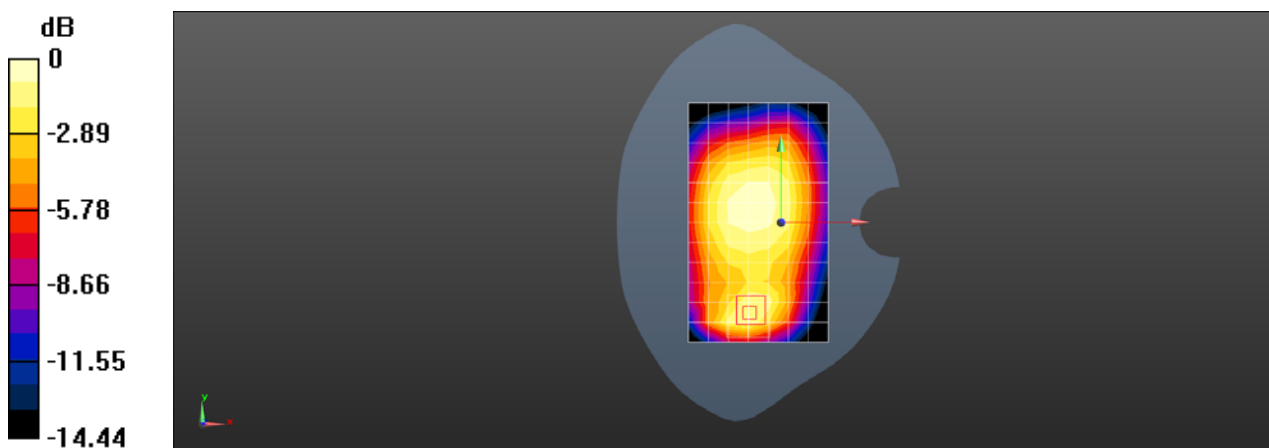
Configuration/Body/Zoom Scan (5x5x7)/Cube 0: Measurement grid: dx=8mm, dy=8mm, dz=5mm

Reference Value = 18.64 V/m; Power Drift = -0.04 dB

Peak SAR (extrapolated) = 0.576 W/kg

SAR(1 g) = 0.309 W/kg; SAR(10 g) = 0.183 W/kg

Maximum value of SAR (measured) = 0.463 W/kg



0 dB = 0.463 W/kg = -3.34 dBW/kg

Test Laboratory: SGS-SAR Lab

LM-X430FMW LTE Band 7 20M QPSK 1RB50 20850CH Right cheek

DUT: LM-X430FMW; Type: Mobile Handset; Serial: 907HUSQ0000006

Communication System: UID 0, LTE-FDD BW 20MHz (0); Frequency: 2510 MHz;Duty Cycle: 1:1

Medium: HSL2600;Medium parameters used: $f = 2510$ MHz; $\sigma = 1.83$ S/m; $\epsilon_r = 40.515$; $\rho = 1000$ kg/m³

Phantom section: Right Section

DASY 5 Configuration:

- Probe: EX3DV4 - SN3923; ConvF(7.66, 7.66, 7.66); Calibrated: 2018-09-30;
- Sensor-Surface: 1.4mm (Mechanical Surface Detection)
- Electronics: DAE4 Sn1428; Calibrated: 2019-01-11
- Phantom: SAM 4; Type: SAM; Serial: 1640
- DASY52 52.8.8(1222); SEMCAD X 14.6.10(7331)

Configuration/Head/Area Scan (10x16x1): Measurement grid: dx=12mm, dy=12mm
Maximum value of SAR (measured) = 0.129 W/kg

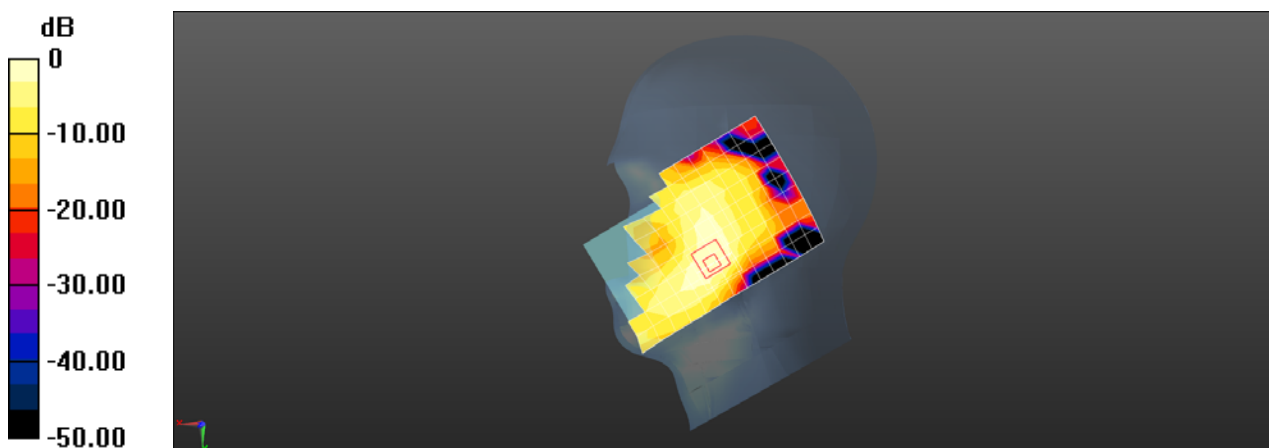
Configuration/Head/Zoom Scan (7x7x7)/Cube 0: Measurement grid: dx=5mm, dy=5mm, dz=5mm

Reference Value = 0 V/m; Power Drift = 0.00 dB

Peak SAR (extrapolated) = 0.176 W/kg

SAR(1 g) = 0.095 W/kg; SAR(10 g) = 0.049 W/kg

Maximum value of SAR (measured) = 0.144 W/kg



0 dB = 0.144 W/kg = -8.42 dBW/kg

Test Laboratory: SGS-SAR Lab

LM-X430FMW LTE Band 7 20M QPSK 1RB50 20850CH Back side 10mm

DUT: LM-X430FMW; Type: Mobile Handset; Serial: 907HUSQ0000006

Communication System: UID 0, LTE-FDD BW 20MHz (0); Frequency: 2510 MHz; Duty Cycle: 1:1

Medium: HSL2600; Medium parameters used: $f = 2510$ MHz; $\sigma = 1.83$ S/m; $\epsilon_r = 40.515$; $\rho = 1000$ kg/m³

Phantom section: Flat Section

DASY 5 Configuration:

- Probe: EX3DV4 - SN3923; ConvF(7.66, 7.66, 7.66); Calibrated: 2018-09-30;
- Sensor-Surface: 1.4mm (Mechanical Surface Detection)
- Electronics: DAE4 Sn1428; Calibrated: 2019-01-11
- Phantom: SAM 4; Type: SAM; Serial: 1640
- DASY52 52.8.8(1222); SEMCAD X 14.6.10(7331)

Configuration/Body/Area Scan (10x16x1): Measurement grid: dx=12mm, dy=12mm
Maximum value of SAR (measured) = 1.06 W/kg

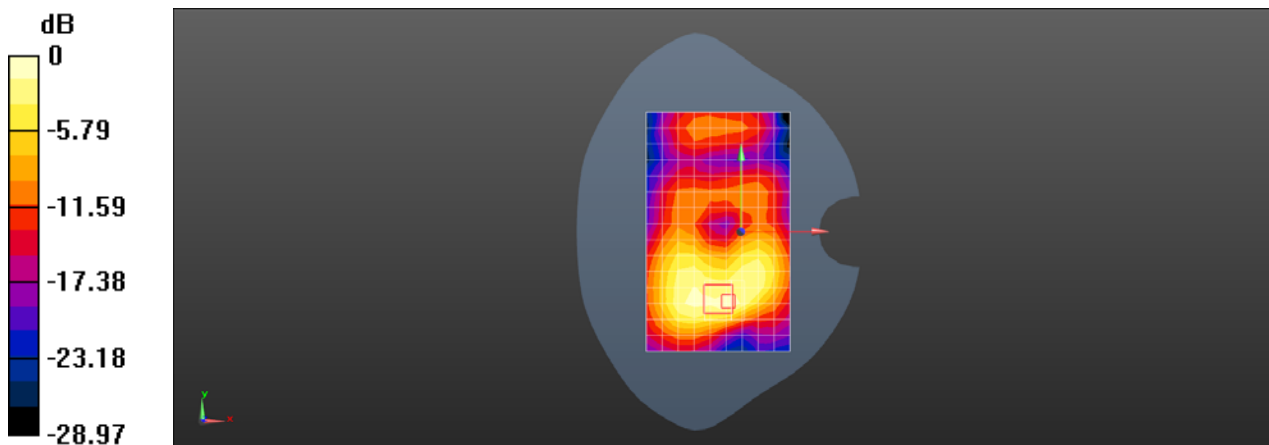
Configuration/Body/Zoom Scan (7x7x7)/Cube 0: Measurement grid: dx=5mm, dy=5mm, dz=5mm

Reference Value = 1.677 V/m; Power Drift = 0.01 dB

Peak SAR (extrapolated) = 1.38 W/kg

SAR(1 g) = 0.622 W/kg; SAR(10 g) = 0.291 W/kg

Maximum value of SAR (measured) = 1.07 W/kg



Test Laboratory: SGS-SAR Lab

LM-X430FMW LTE Band 12 10M QPSK 1RB25 23095CH Right cheek

DUT: LM-X430FMW; Type: Mobile Handset; Serial: 907HUYN0000002

Communication System: UID 0, LTE-FDD BW 10MHZ (0); Frequency: 707.5 MHz; Duty Cycle: 1:1

Medium: HSL750; Medium parameters used (interpolated): $f = 707.5$ MHz; $\sigma = 0.861$ S/m; $\epsilon_r = 42.905$; $\rho = 1000$ kg/m³
Phantom section: Right Section

DASY 5 Configuration:

- Probe: EX3DV4 - SN3793; ConvF(9.41, 9.41, 9.41); Calibrated: 2019-03-25;
- Sensor-Surface: 1.4mm (Mechanical Surface Detection)
- Electronics: DAE3 Sn414; Calibrated: 2018-12-03
- Phantom: SAM 2; Type: SAM; Serial: 1913
- DASY52 52.8.8(1222); SEMCAD X 14.6.10(7331)

Configuration/Head/Area Scan (8x13x1): Measurement grid: dx=15mm, dy=15mm

[Info: Interpolated medium parameters used for SAR evaluation.](#)

Maximum value of SAR (measured) = 0.151 W/kg

Configuration/Head/Zoom Scan (5x5x7)/Cube 0: Measurement grid: dx=8mm, dy=8mm, dz=5mm

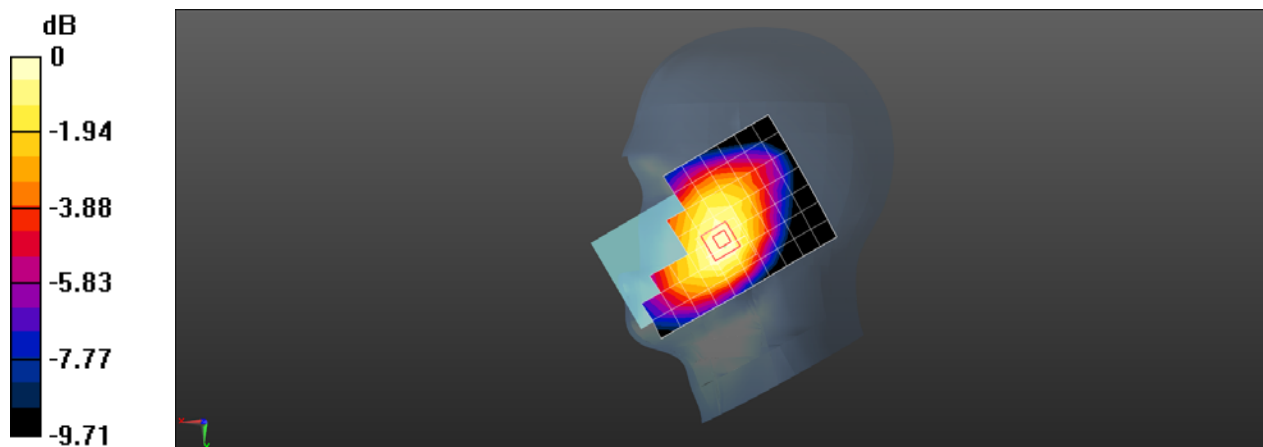
Reference Value = 4.901 V/m; Power Drift = 0.05 dB

Peak SAR (extrapolated) = 0.172 W/kg

SAR(1 g) = 0.128 W/kg; SAR(10 g) = 0.100 W/kg

[Info: Interpolated medium parameters used for SAR evaluation.](#)

Maximum value of SAR (measured) = 0.153 W/kg



0 dB = 0.153 W/kg = -8.15 dBW/kg

Test Laboratory: SGS-SAR Lab

LM-X430FMW LTE Band 12 10M QPSK 1RB25 23095CH Right side 10mm

DUT: LM-X430FMW; Type: Mobile Handset; Serial: 907HUSQ0000006

Communication System: UID 0, LTE-FDD BW 10MHZ (0); Frequency: 707.5 MHz; Duty Cycle: 1:1

Medium: HSL750; Medium parameters used (interpolated): $f = 707.5$ MHz; $\sigma = 0.861$ S/m; $\epsilon_r = 42.905$; $\rho = 1000$ kg/m³
Phantom section: Flat Section

DASY 5 Configuration:

- Probe: EX3DV4 - SN3793; ConvF(9.41, 9.41, 9.41); Calibrated: 2019-03-25;
- Sensor-Surface: 1.4mm (Mechanical Surface Detection)
- Electronics: DAE3 Sn414; Calibrated: 2018-12-03
- Phantom: SAM 2; Type: SAM; Serial: 1913
- DASY52 52.8.8(1222); SEMCAD X 14.6.10(7331)

Configuration/Body/Area Scan (5x13x1): Measurement grid: dx=15mm, dy=15mm

[Info: Interpolated medium parameters used for SAR evaluation.](#)

Maximum value of SAR (measured) = 0.299 W/kg

Configuration/Body/Zoom Scan (5x5x7)/Cube 0: Measurement grid: dx=8mm, dy=8mm, dz=5mm

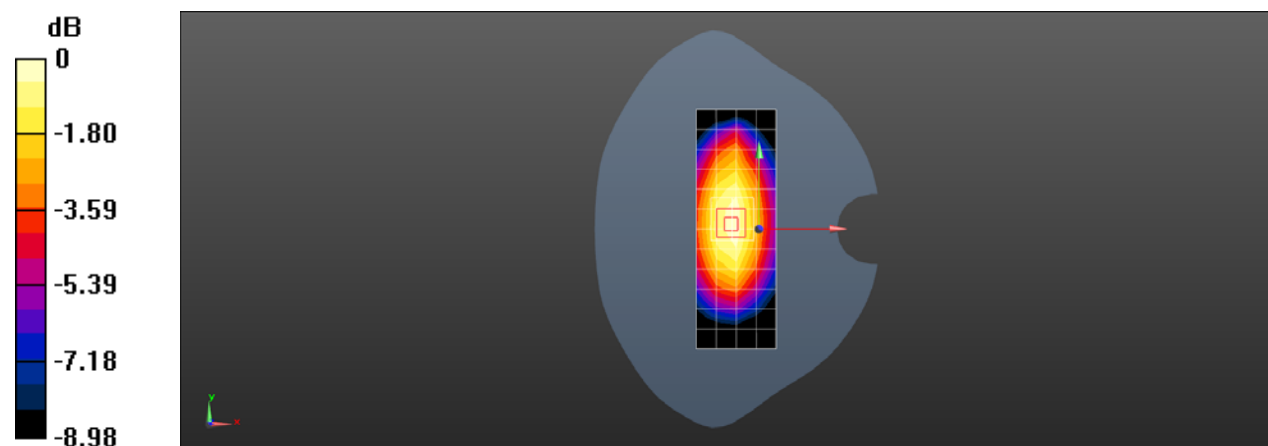
Reference Value = 16.66 V/m; Power Drift = -0.11 dB

Peak SAR (extrapolated) = 0.359 W/kg

SAR(1 g) = 0.233 W/kg; SAR(10 g) = 0.163 W/kg

[Info: Interpolated medium parameters used for SAR evaluation.](#)

Maximum value of SAR (measured) = 0.311 W/kg



0 dB = 0.311 W/kg = -5.07 dBW/kg

Test Laboratory: SGS-SAR Lab

LM-X430FMW LTE Band 13 10M QPSK 1RB0 23230CH Right cheek

DUT: LM-X430FMW; Type: Mobile Handset; Serial: 907HUYN0000002

Communication System: UID 0, LTE-FDD BW 10MHZ (0); Frequency: 782 MHz;Duty Cycle: 1:1

Medium: HSL750;Medium parameters used: $f = 782$ MHz; $\sigma = 0.909$ S/m; $\epsilon_r = 42.445$; $\rho = 1000$ kg/m³

Phantom section: Right Section

DASY 5 Configuration:

- Probe: EX3DV4 - SN3793; ConvF(9.41, 9.41, 9.41); Calibrated: 2019-03-25;
- Sensor-Surface: 1.4mm (Mechanical Surface Detection)
- Electronics: DAE3 Sn414; Calibrated: 2018-12-03
- Phantom: SAM 2; Type: SAM; Serial: 1913
- DASY52 52.8.8(1222); SEMCAD X 14.6.10(7331)

Configuration/Head/Area Scan (8x13x1): Measurement grid: dx=15mm, dy=15mm
Maximum value of SAR (measured) = 0.117 W/kg

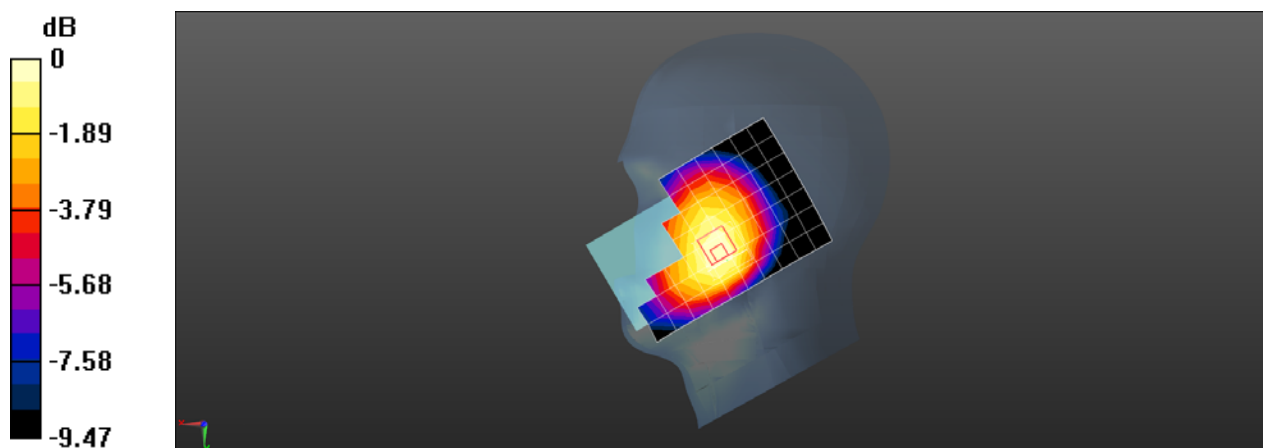
Configuration/Head/Zoom Scan (5x5x7)/Cube 0: Measurement grid: dx=8mm, dy=8mm, dz=5mm

Reference Value = 3.175 V/m; Power Drift = -0.03 dB

Peak SAR (extrapolated) = 0.137 W/kg

SAR(1 g) = 0.099 W/kg; SAR(10 g) = 0.077 W/kg

Maximum value of SAR (measured) = 0.120 W/kg



0 dB = 0.120 W/kg = -9.21 dBW/kg

Test Laboratory: SGS-SAR Lab

LM-X430FMW LTE Band 13 10M QPSK 1RB0 23230CH Back side 10mm

DUT: LM-X430FMW; Type: Mobile Handset; Serial: 907HUCU0000003

Communication System: UID 0, LTE-FDD BW 10MHZ (0); Frequency: 782 MHz;Duty Cycle: 1:1

Medium: HSL750;Medium parameters used: $f = 782$ MHz; $\sigma = 0.909$ S/m; $\epsilon_r = 42.445$; $\rho = 1000$ kg/m³

Phantom section: Flat Section

DASY 5 Configuration:

- Probe: EX3DV4 - SN3793; ConvF(9.41, 9.41, 9.41); Calibrated: 2019-03-25;
- Sensor-Surface: 1.4mm (Mechanical Surface Detection)
- Electronics: DAE3 Sn414; Calibrated: 2018-12-03
- Phantom: SAM 2; Type: SAM; Serial: 1913
- DASY52 52.8.8(1222); SEMCAD X 14.6.10(7331)

Configuration/Body/Area Scan (8x13x1): Measurement grid: dx=15mm, dy=15mm

Maximum value of SAR (measured) = 0.207 W/kg

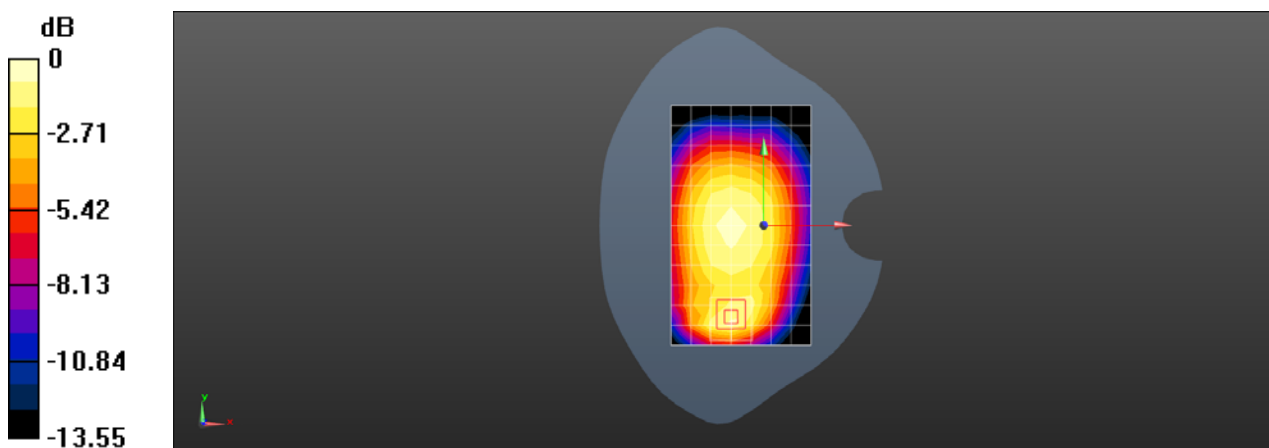
Configuration/Body/Zoom Scan (5x5x7)/Cube 0: Measurement grid: dx=8mm, dy=8mm, dz=5mm

Reference Value = 13.40 V/m; Power Drift = 0.03 dB

Peak SAR (extrapolated) = 0.293 W/kg

SAR(1 g) = 0.159 W/kg; SAR(10 g) = 0.096 W/kg

Maximum value of SAR (measured) = 0.240 W/kg



Test Laboratory: SGS-SAR Lab

LM-X430FMW LTE Band 66 20M QPSK 1RB50 132572CH Left cheek

DUT: LM-X430FMW; Type: Mobile Handset; Serial: 907HUYN0000002

Communication System: UID 0, LTE-FDD BW 20MHz (0); Frequency: 1770 MHz; Duty Cycle: 1:1

Medium: HSL1750; Medium parameters used: $f = 1770$ MHz; $\sigma = 1.34$ S/m; $\epsilon_r = 40.371$; $\rho = 1000$ kg/m³

Phantom section: Left Section

DASY 5 Configuration:

- Probe: EX3DV4 - SN3923; ConvF(8.92, 8.92, 8.92); Calibrated: 2018-09-30;
- Sensor-Surface: 1.4mm (Mechanical Surface Detection)
- Electronics: DAE4 Sn1428; Calibrated: 2019-01-11
- Phantom: SAM 4; Type: SAM; Serial: 1640
- DASY52 52.8.8(1222); SEMCAD X 14.6.10(7331)

Configuration/Head/Area Scan (8x13x1): Measurement grid: dx=15mm, dy=15mm
Maximum value of SAR (measured) = 0.176 W/kg

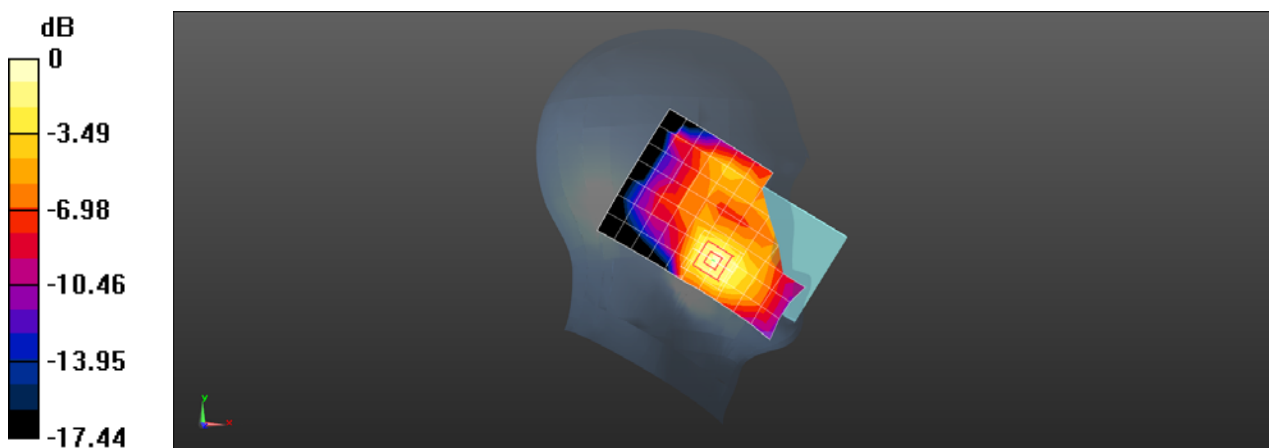
Configuration/Head/Zoom Scan (5x5x7)/Cube 0: Measurement grid: dx=8mm, dy=8mm, dz=5mm

Reference Value = 2.596 V/m; Power Drift = 0.03 dB

Peak SAR (extrapolated) = 0.243 W/kg

SAR(1 g) = 0.147 W/kg; SAR(10 g) = 0.090 W/kg

Maximum value of SAR (measured) = 0.209 W/kg



0 dB = 0.209 W/kg = -6.80 dBW/kg

Test Laboratory: SGS-SAR Lab

LM-X430FMW LTE Band 66 20M QPSK 1RB50 132572CH Back side 10mm

DUT: LM-X430FMW; Type: Mobile Handset; Serial: 907HUYN0000002

Communication System: UID 0, LTE-FDD BW 20MHz (0); Frequency: 1770 MHz;Duty Cycle: 1:1

Medium: HSL1750;Medium parameters used: $f = 1770$ MHz; $\sigma = 1.34$ S/m; $\epsilon_r = 40.371$; $\rho = 1000$ kg/m³

Phantom section: Flat Section

DASY 5 Configuration:

- Probe: EX3DV4 - SN3923; ConvF(8.92, 8.92, 8.92); Calibrated: 2018-09-30;
- Sensor-Surface: 1.4mm (Mechanical Surface Detection)
- Electronics: DAE4 Sn1428; Calibrated: 2019-01-11
- Phantom: SAM 4; Type: SAM; Serial: 1640
- DASY52 52.8.8(1222); SEMCAD X 14.6.10(7331)

Configuration/Body/Area Scan (8x13x1): Measurement grid: dx=15mm, dy=15mm

Maximum value of SAR (measured) = 0.769 W/kg

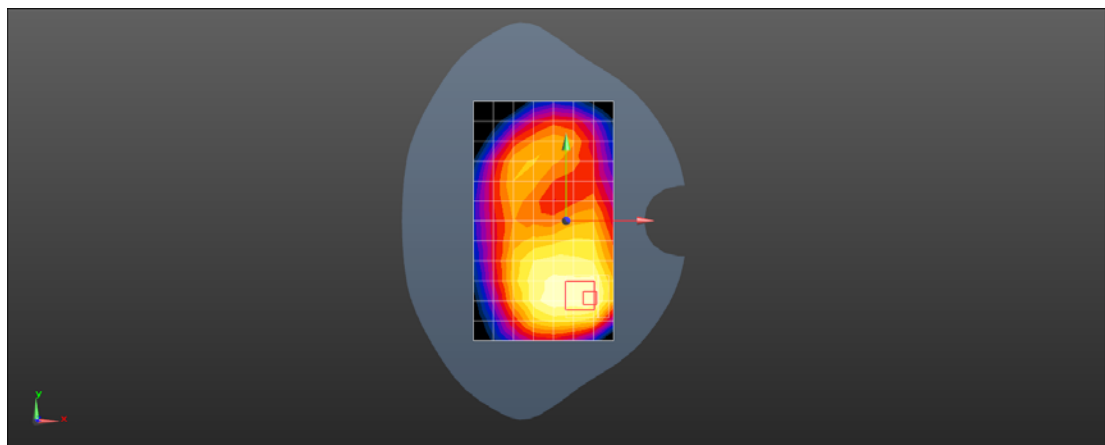
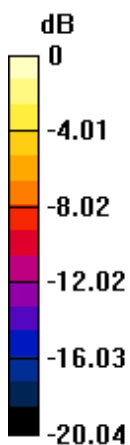
Configuration/Body/Zoom Scan (5x5x7)/Cube 0: Measurement grid: dx=8mm, dy=8mm, dz=5mm

Reference Value = 8.875 V/m; Power Drift = 0.05 dB

Peak SAR (extrapolated) = 1.01 W/kg

SAR(1 g) = 0.537 W/kg; SAR(10 g) = 0.328 W/kg

Maximum value of SAR (measured) = 0.776 W/kg



0 dB = 0.776 W/kg = -1.10 dBW/kg

Test Laboratory: SGS-SAR Lab

LM-X430FMW WIFI 2.4G 802.11b 1CH Left cheek

DUT: LM-X430FMW; Type: Mobile Handset; Serial: 907HUSQ0000006

Communication System: UID 0, WI-FI(2.4GHz) (0); Frequency: 2412 MHz;Duty Cycle: 1:1.012

Medium: HSL2450;Medium parameters used: $f = 2412$ MHz; $\sigma = 1.747$ S/m; $\epsilon_r = 40.846$; $\rho = 1000$ kg/m³

Phantom section: Left Section

DASY 5 Configuration:

- Probe: EX3DV4 - SN3793; ConvF(6.93, 6.93, 6.93); Calibrated: 2019-03-25;
- Sensor-Surface: 1.4mm (Mechanical Surface Detection)
- Electronics: DAE3 Sn414; Calibrated: 2018-12-03
- Phantom: SAM 1; Type: SAM; Serial: 1283
- DASY52 52.8.8(1222); SEMCAD X 14.6.10(7331)

Configuration/Head/Area Scan (9x16x1): Measurement grid: dx=12mm, dy=12mm
Maximum value of SAR (measured) = 1.15 W/kg

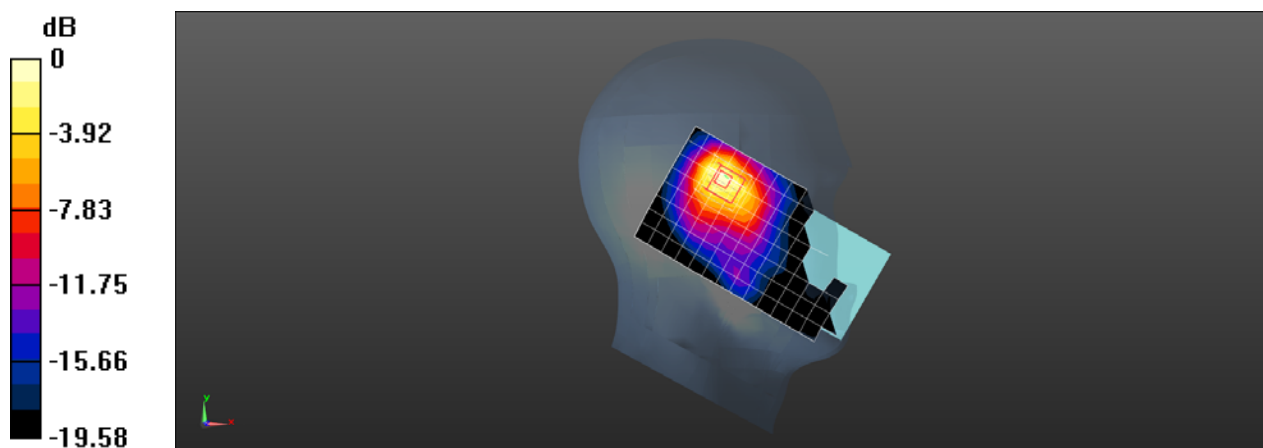
Configuration/Head/Zoom Scan (7x7x7)/Cube 0: Measurement grid: dx=5mm, dy=5mm, dz=5mm

Reference Value = 8.581 V/m; Power Drift = -0.07 dB

Peak SAR (extrapolated) = 1.44 W/kg

SAR(1 g) = 0.697 W/kg; SAR(10 g) = 0.337 W/kg

Maximum value of SAR (measured) = 1.09 W/kg



0 dB = 1.09 W/kg = 0.37 dBW/kg

Test Laboratory: SGS-SAR Lab

LM-X430FMW WIFI 2.4G 802.11b 1CH Back side 10mm

DUT: LM-X430FMW; Type: Mobile Handset; Serial: 907HUSQ0000006

Communication System: UID 0, WI-FI(2.4GHz) (0); Frequency: 2412 MHz;Duty Cycle: 1:1.012

Medium: HSL2450;Medium parameters used: $f = 2412$ MHz; $\sigma = 1.747$ S/m; $\epsilon_r = 40.846$; $\rho = 1000$ kg/m³

Phantom section: Flat Section

DASY 5 Configuration:

- Probe: EX3DV4 - SN3793; ConvF(6.93, 6.93, 6.93); Calibrated: 2019-03-25;
- Sensor-Surface: 1.4mm (Mechanical Surface Detection)
- Electronics: DAE3 Sn414; Calibrated: 2018-12-03
- Phantom: SAM 1; Type: SAM; Serial: 1283
- DASY52 52.8.8(1222); SEMCAD X 14.6.10(7331)

Configuration/Body/Area Scan (9x16x1): Measurement grid: dx=12mm, dy=12mm
Maximum value of SAR (measured) = 0.441 W/kg

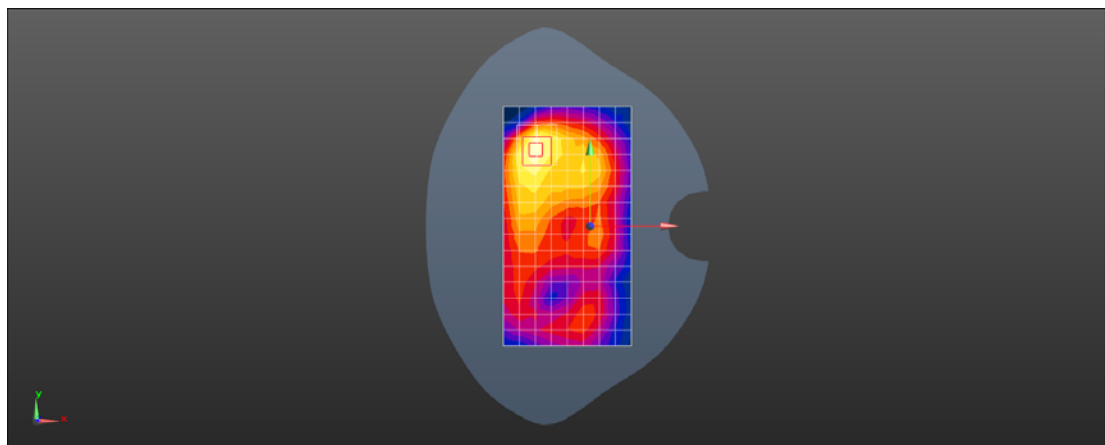
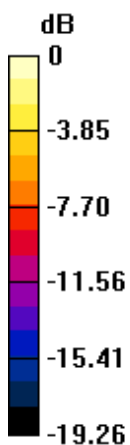
Configuration/Body/Zoom Scan (7x7x7)/Cube 0: Measurement grid: dx=5mm, dy=5mm, dz=5mm

Reference Value = 4.586 V/m; Power Drift = -0.09 dB

Peak SAR (extrapolated) = 0.582 W/kg

SAR(1 g) = 0.278 W/kg; SAR(10 g) = 0.138 W/kg

Maximum value of SAR (measured) = 0.450 W/kg



0 dB = 0.450 W/kg = -3.47 dBW/kg

Test Laboratory: SGS-SAR Lab

LM-X430FMW Bluetooth DH5 39CH Left cheek

DUT: LM-X430FMW; Type: Mobile Handset; Serial: 907HUSQ0000006

Communication System: UID 0, Bluetooth (0); Frequency: 2441 MHz; Duty Cycle: 1:1.303

Medium: HSL2450; Medium parameters used: $f = 2441$ MHz; $\sigma = 1.779$ S/m; $\epsilon_r = 40.744$; $\rho = 1000$ kg/m³

Phantom section: Left Section

DASY 5 Configuration:

- Probe: EX3DV4 - SN3793; ConvF(6.93, 6.93, 6.93); Calibrated: 2019-03-25;
- Sensor-Surface: 1.4mm (Mechanical Surface Detection)
- Electronics: DAE3 Sn414; Calibrated: 2018-12-03
- Phantom: SAM 1; Type: SAM; Serial: 1283
- DASY52 52.8.8(1222); SEMCAD X 14.6.10(7331)

Configuration/Head/Area Scan (9x16x1): Measurement grid: dx=12mm, dy=12mm
Maximum value of SAR (measured) = 0.126 W/kg

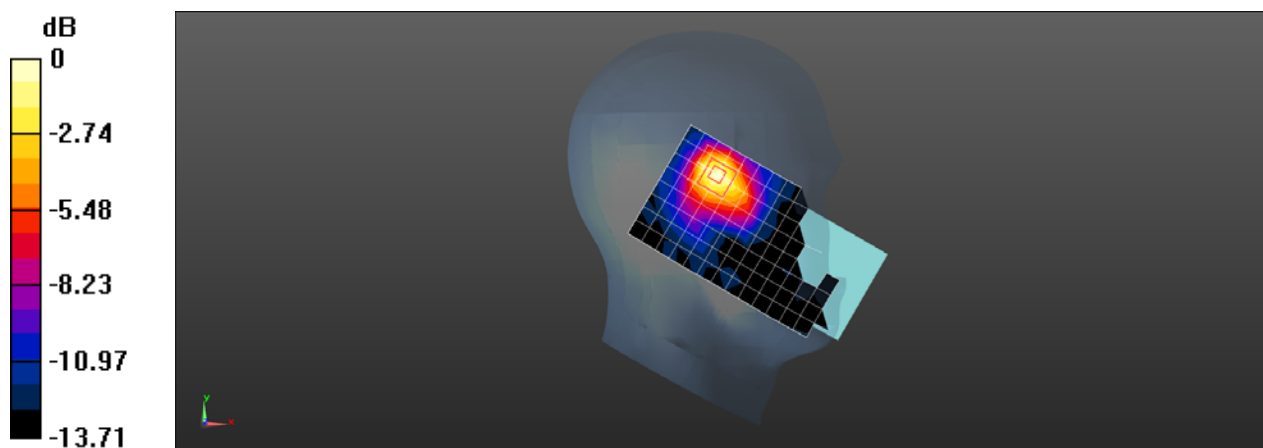
Configuration/Head/Zoom Scan (7x7x7)/Cube 0: Measurement grid: dx=5mm, dy=5mm, dz=5mm

Reference Value = 3.364 V/m; Power Drift = -0.12 dB

Peak SAR (extrapolated) = 0.150 W/kg

SAR(1 g) = 0.075 W/kg; SAR(10 g) = 0.039 W/kg

Maximum value of SAR (measured) = 0.121 W/kg



0 dB = 0.121 W/kg = -9.17 dBW/kg