



# **Appendix A**

## **Detailed System Check Results**

|  |
|--|
| 1. System Performance Check            |
| System Performance Check 835 MHz Head  |
| System Performance Check 1900 MHz Head |
| System Performance Check 2450 MHz Head |

Test Laboratory: SGS-SAR Lab

## System Performance Check 835 MHz Head

**DUT: D835V2; Type: D835V2; Serial: 4d105**

Communication System: UID 0, CW (0); Frequency: 835 MHz; Duty Cycle: 1:1

Medium: HSL835; Medium parameters used:  $f = 835$  MHz;  $\sigma = 0.891$  S/m;  $\epsilon_r = 43.217$ ;  $\rho = 1000$  kg/m<sup>3</sup>

Phantom section: Flat Section

DASY 5 Configuration:

- Probe: EX3DV4 - SN3793; ConvF(9.04, 9.04, 9.04); Calibrated: 2019-03-25;
- Sensor-Surface: 2mm (Mechanical Surface Detection)
- Electronics: DAE3 Sn414; Calibrated: 2018-12-03
- Phantom: SAM 2; Type: SAM; Serial: 1913
- DASY52 52.8.8(1222); SEMCAD X 14.6.10(7331)

**Body/d=15mm, Pin=250mW/Area Scan (8x13x1):** Measurement grid: dx=15mm, dy=15mm

Maximum value of SAR (measured) = 3.01 W/kg

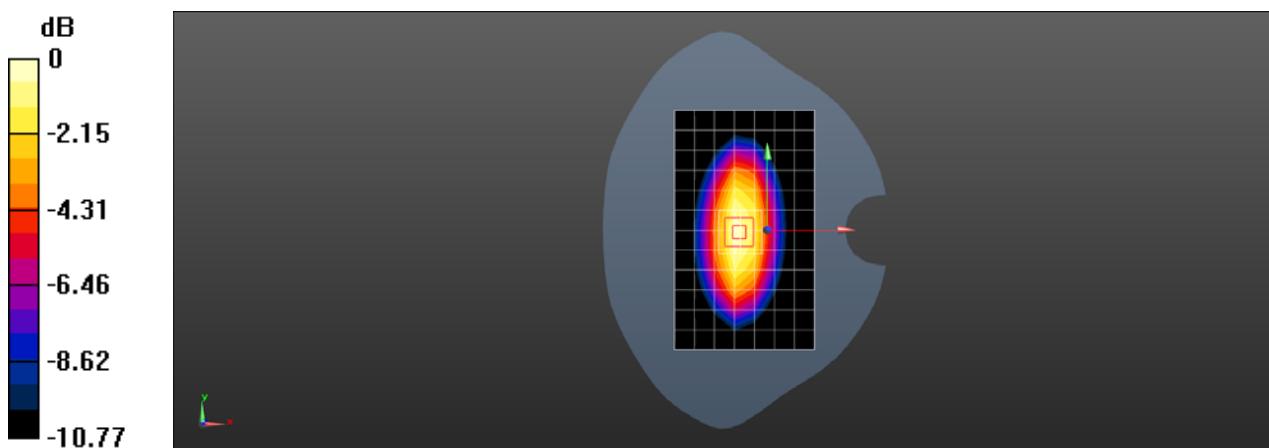
**Body/d=15mm, Pin=250mW/Zoom Scan (5x5x7)/Cube 0:** Measurement grid: dx=8mm, dy=8mm, dz=5mm

Reference Value = 53.85 V/m; Power Drift = -0.05 dB

Peak SAR (extrapolated) = 3.81 W/kg

**SAR(1 g) = 2.47 W/kg; SAR(10 g) = 1.61 W/kg**

Maximum value of SAR (measured) = 3.17 W/kg



0 dB = 3.17 W/kg = 5.01 dBW/kg

Test Laboratory: SGS-SAR Lab

## System Performance Check 1900 MHz Head

**DUT: D1900V2; Type: D1900V2; Serial: 5d028**

Communication System: UID 0, CW (0); Frequency: 1900 MHz; Duty Cycle: 1:1

Medium: HSL1900; Medium parameters used:  $f = 1900$  MHz;  $\sigma = 1.372$  S/m;  $\epsilon_r = 40.64$ ;  $\rho = 1000$  kg/m<sup>3</sup>

Phantom section: Flat Section

DASY 5 Configuration:

- Probe: EX3DV4 - SN3923; ConvF(8.51, 8.51, 8.51); Calibrated: 2018-09-30;
- Sensor-Surface: 1.4mm (Mechanical Surface Detection)
- Electronics: DAE4 Sn1428; Calibrated: 2019-01-11
- Phantom: SAM 3; Type: SAM; Serial: 1912
- DASY52 52.8.8(1222); SEMCAD X 14.6.10(7331)

**Body/d=10mm, Pin=250mW/Area Scan (8x9x1):** Measurement grid: dx=15mm, dy=15mm  
Maximum value of SAR (measured) = 9.57 W/kg

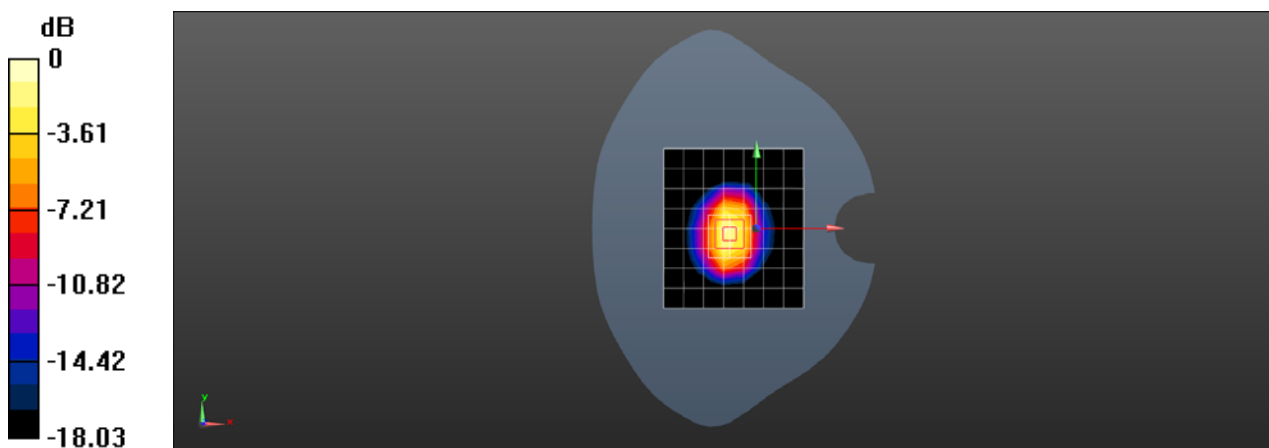
**Body/d=10mm, Pin=250mW/Zoom Scan (5x5x7)/Cube 0:** Measurement grid: dx=8mm, dy=8mm, dz=5mm

Reference Value = 88.89 V/m; Power Drift = -0.03 dB

Peak SAR (extrapolated) = 18.8 W/kg

**SAR(1 g) = 10.2 W/kg; SAR(10 g) = 5.25 W/kg**

Maximum value of SAR (measured) = 11.4 W/kg



0 dB = 11.4 W/kg = 10.57 dBW/kg

Test Laboratory: SGS-SAR Lab

## System Performance Check 2450MHz Head

**DUT: D2450V2; Type: D2450V2; Serial: 733**

Communication System: UID 0, CW; Frequency: 2450 MHz; Duty Cycle: 1:1

Medium: HSL2450; Medium parameters used:  $f = 2450$  MHz;  $\sigma = 1.789$  S/m;  $\epsilon_r = 40.716$ ;  $\rho = 1000$  kg/m<sup>3</sup>

Phantom section: Flat Section

DASY 5 Configuration:

- Probe: EX3DV4 - SN3793; ConvF(6.93, 6.93, 6.93); Calibrated: 2019-03-25;
- Sensor-Surface: 1.4mm (Mechanical Surface Detection)
- Electronics: DAE3 Sn414; Calibrated: 2018-12-03
- Phantom: SAM 1; Type: SAM; Serial: 1283
- DASY52 52.8.8(1222); SEMCAD X 14.6.10(7331)

**Body/d=10mm, Pin=250mW/Area Scan (9x10x1):** Measurement grid: dx=12mm, dy=12mm

Maximum value of SAR (measured) = 21.1 W/kg

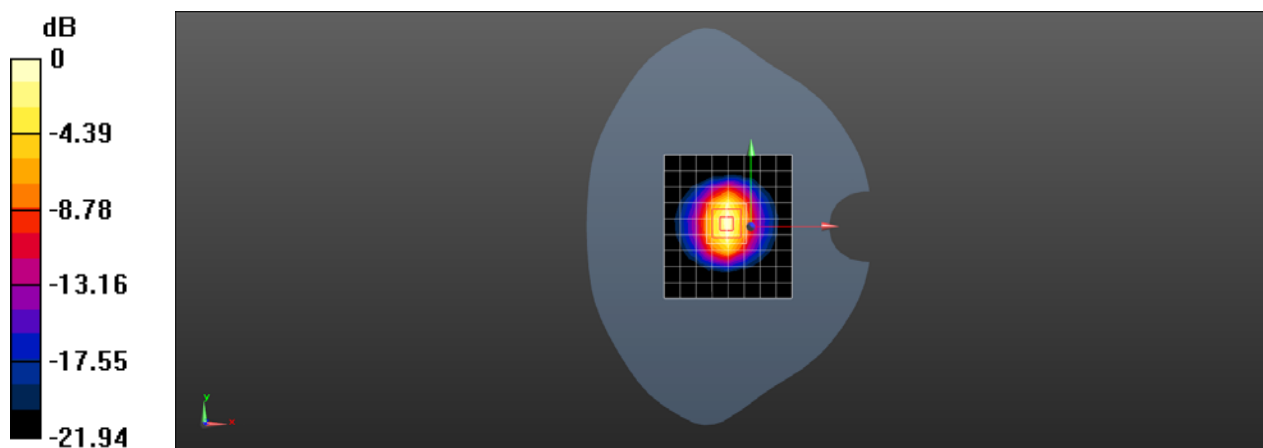
**Body/d=10mm, Pin=250mW/Zoom Scan (7x7x7)/Cube 0:** Measurement grid: dx=5mm, dy=5mm, dz=5mm

Reference Value = 90.88 V/m; Power Drift = -0.02 dB

Peak SAR (extrapolated) = 26.7 W/kg

**SAR(1 g) = 13.1 W/kg; SAR(10 g) = 6.04 W/kg**

Maximum value of SAR (measured) = 21.8 W/kg



0 dB = 21.8 W/kg = 13.38 dBW/kg