

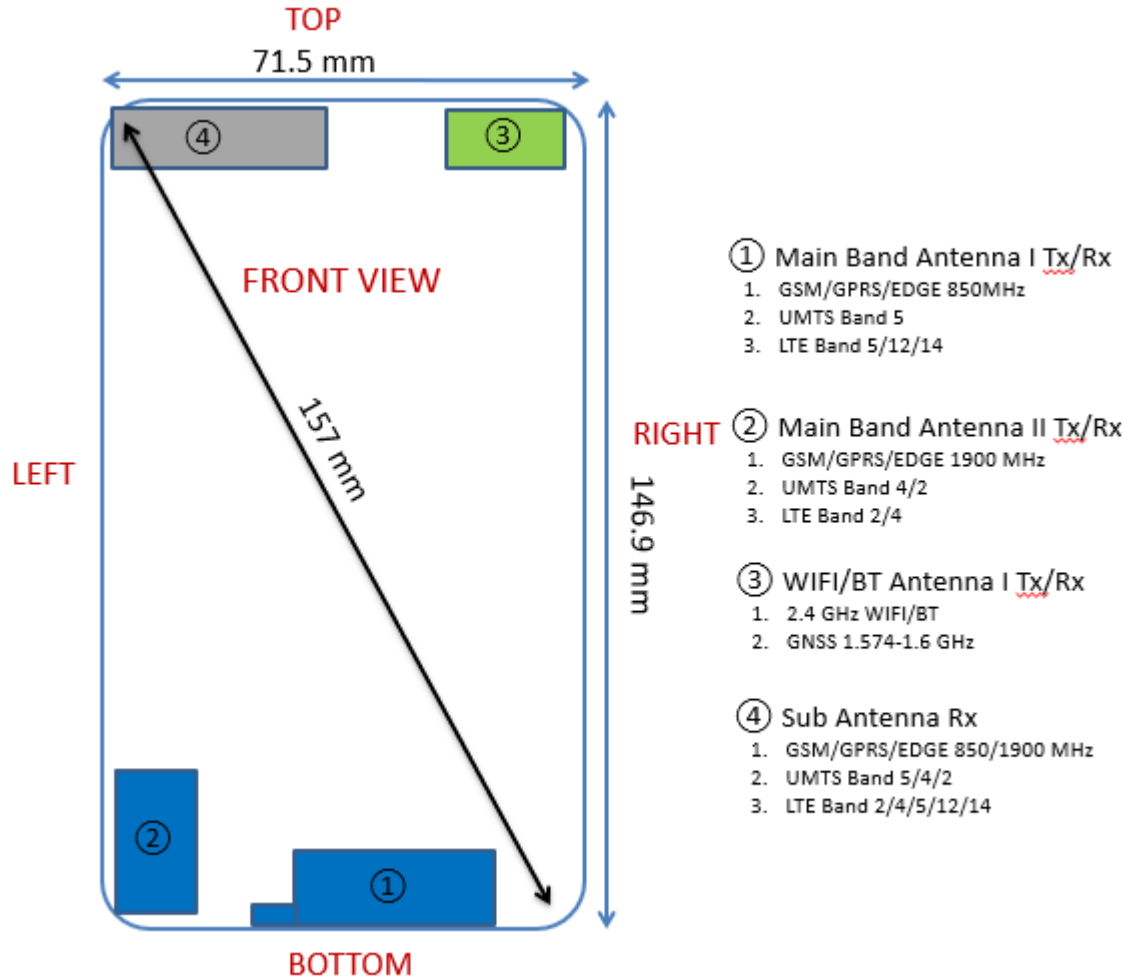




# APPENDIX F: DUT ANTENNA DIAGRAM & SAR TEST SETUP PHOTOGRAPHS

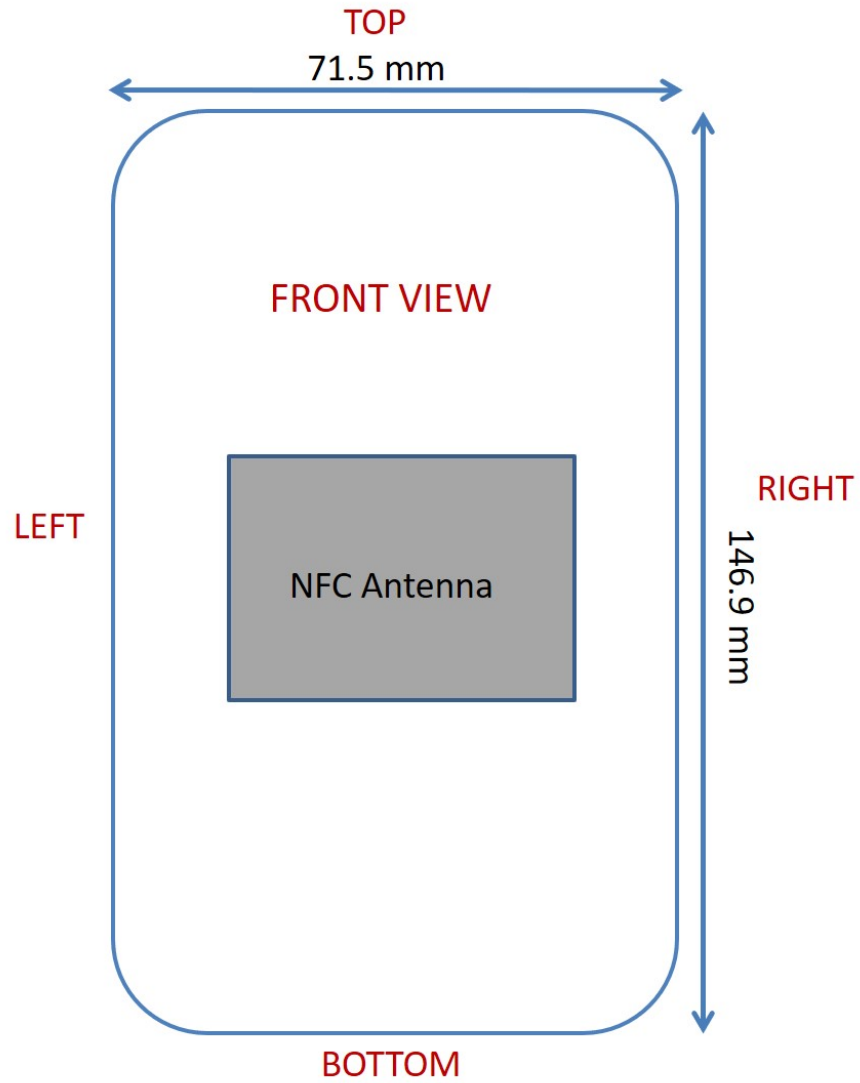
<b>FCC ID</b> ZNFX320AA		<b>SAR EVALUATION REPORT</b>		<b>Approved by:</b> Quality Manager
<b>Test Dates:</b> 05/21/19 - 06/10/19	<b>DUT Type:</b> Portable Handset			APPENDIX F: Page 1 of 9





Note: Exact antenna dimensions and separation distances are shown in the Technical Descriptions in the FCC Filing.

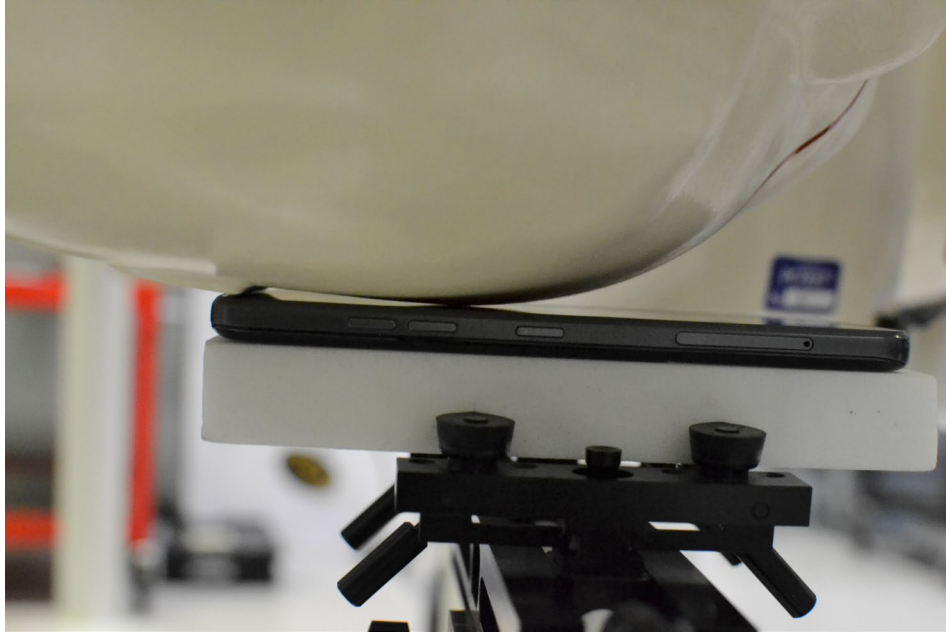
**Figure F-1**  
**DUT Antenna Locations**

FCC ID ZNFX320AA	 PCTEST ENGINEERING LABORATORY, INC.	SAR EVALUATION REPORT	 LG	Approved by: Quality Manager
Test Dates: 05/21/19 - 06/10/19	DUT Type: Portable Handset			APPENDIX F: Page 2 of 9

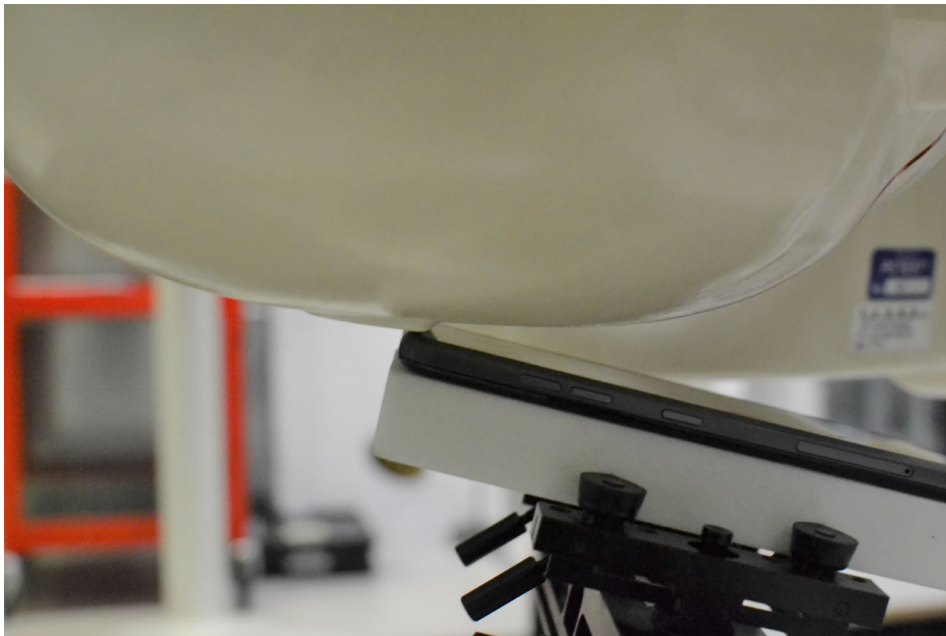


**Figure F-2**  
**NFC Antenna Locations**



FCC ID ZNFX320AA		SAR EVALUATION REPORT		<b>Approved by:</b> Quality Manager
<b>Test Dates:</b> 05/21/19 - 06/10/19	<b>DUT Type:</b> Portable Handset	APPENDIX F: Page 3 of 9		

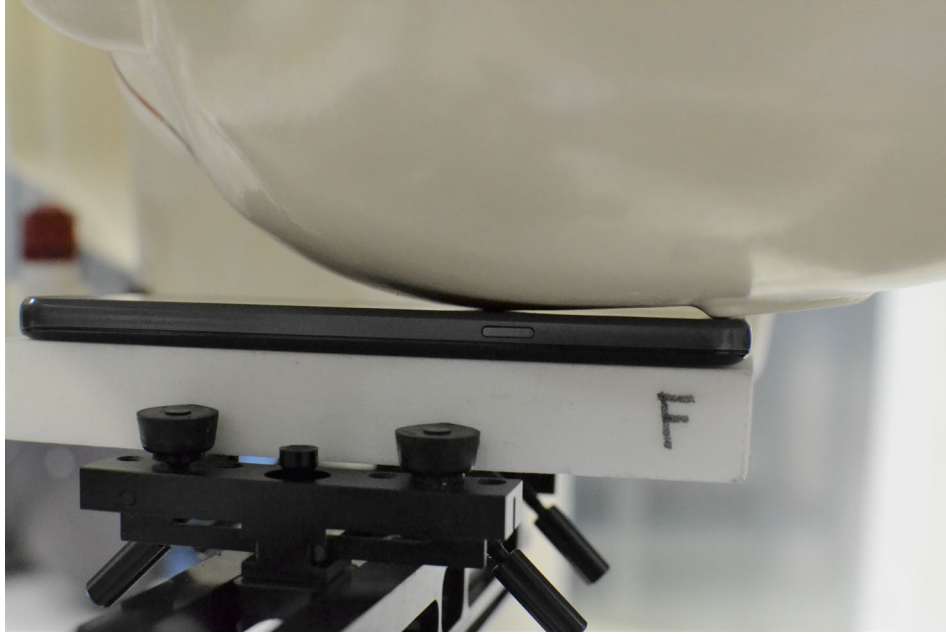


**SAR Test Setup Photo 1- Right Cheek**

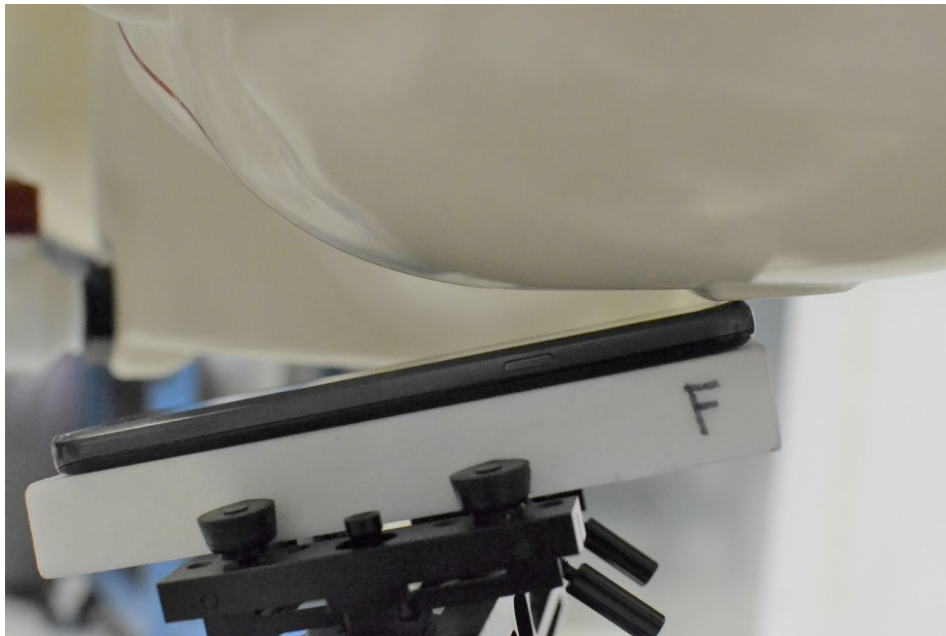


**SAR Test Setup Photo 2- Right Tilt**



<b>FCC ID</b> ZNFX320AA		<b>SAR EVALUATION REPORT</b>		<b>Approved by:</b> Quality Manager
<b>Test Dates:</b> 05/21/19 - 06/10/19	<b>DUT Type:</b> Portable Handset			<b>APPENDIX F:</b> Page 4 of 9

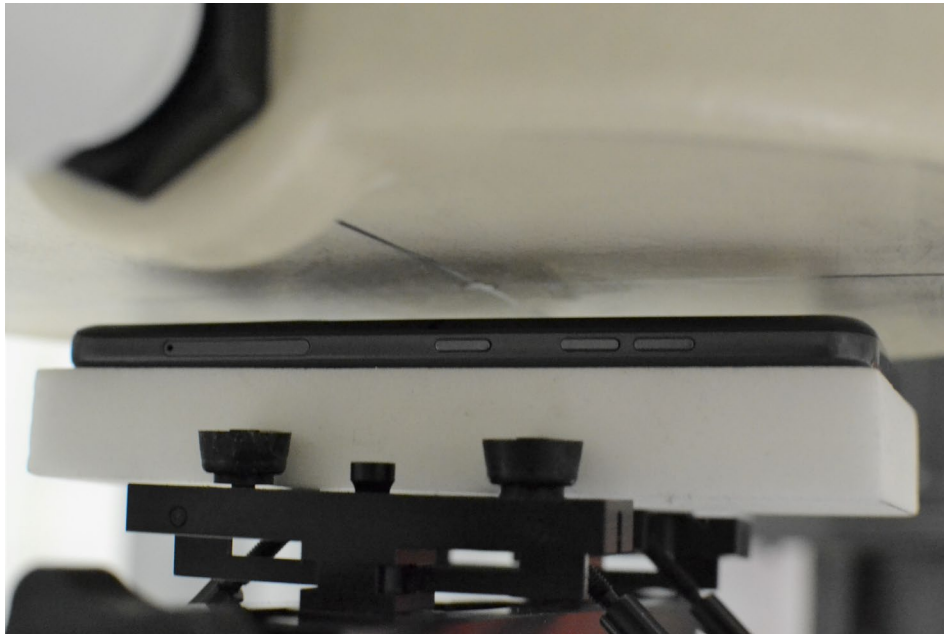


SAR Test Setup Photo 3- Left Cheek

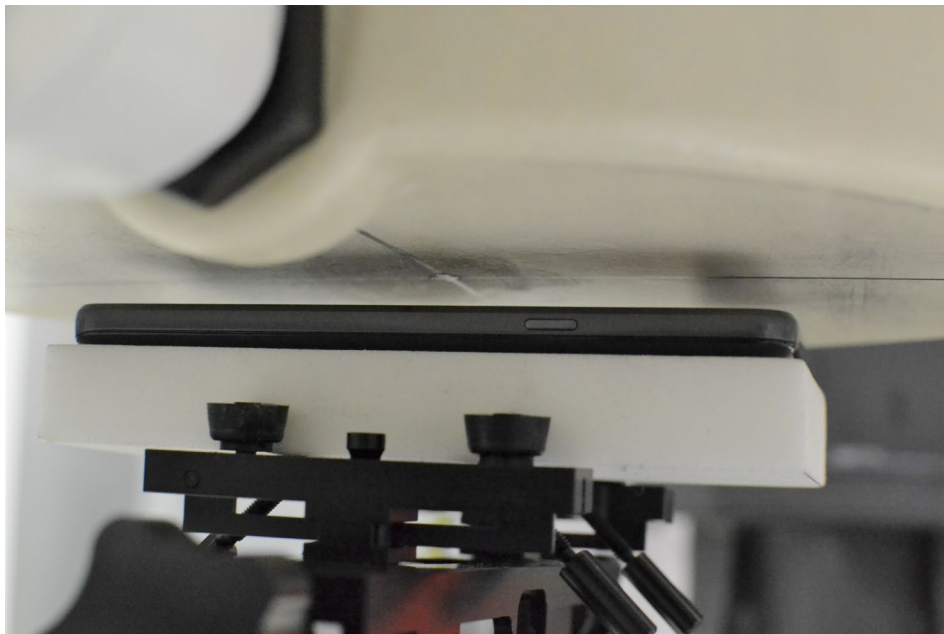


SAR Test Setup Photo 4- Left Tilt



FCC ID ZNFX320AA		SAR EVALUATION REPORT		Approved by: Quality Manager
Test Dates: 05/21/19 - 06/10/19	DUT Type: Portable Handset			APPENDIX F: Page 5 of 9

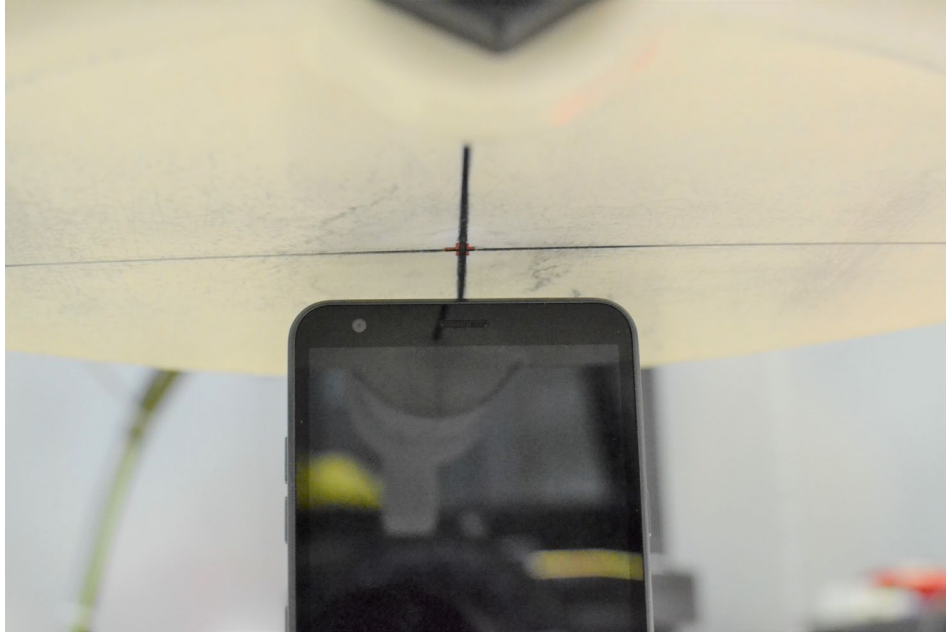


**SAR Test Setup Photo 5 – Back Side 10mm**

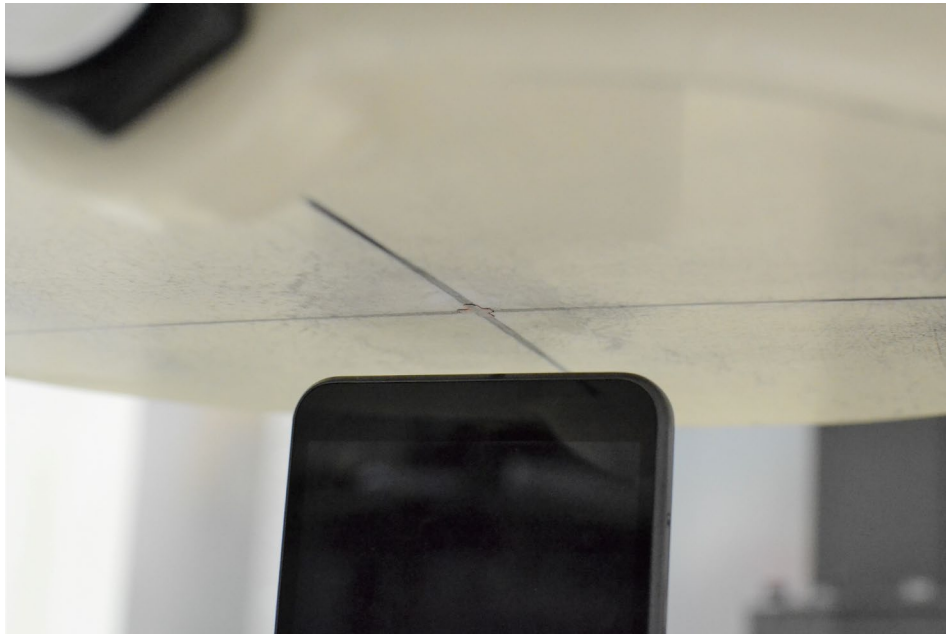


**SAR Test Setup Photo 6 – Front Side 10mm**



FCC ID ZNFX320AA		SAR EVALUATION REPORT		<b>Approved by:</b> Quality Manager
<b>Test Dates:</b> 05/21/19 - 06/10/19	<b>DUT Type:</b> Portable Handset	APPENDIX F: Page 6 of 9		

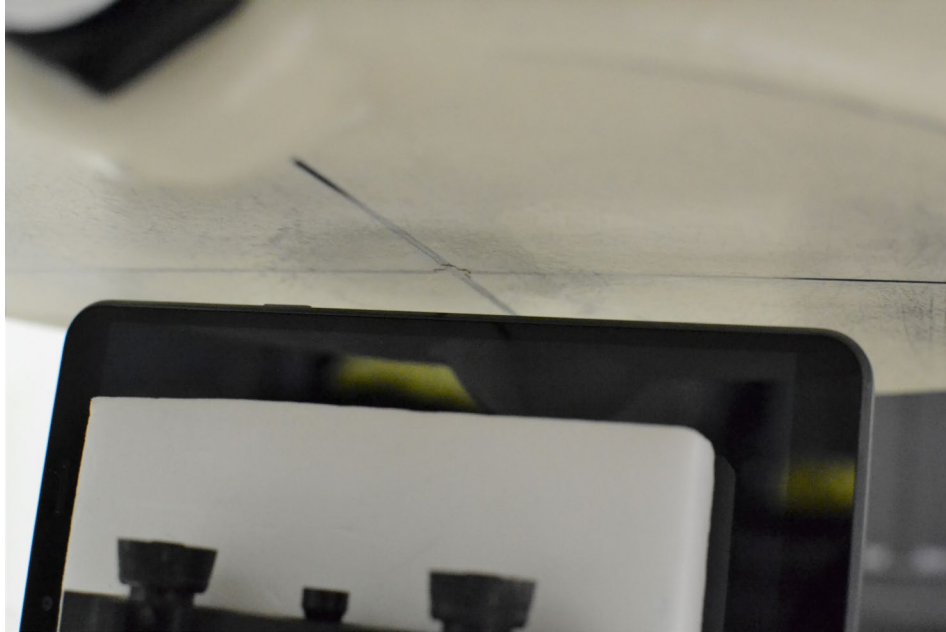


**SAR Test Setup Photo 7 – Top Edge 10mm**

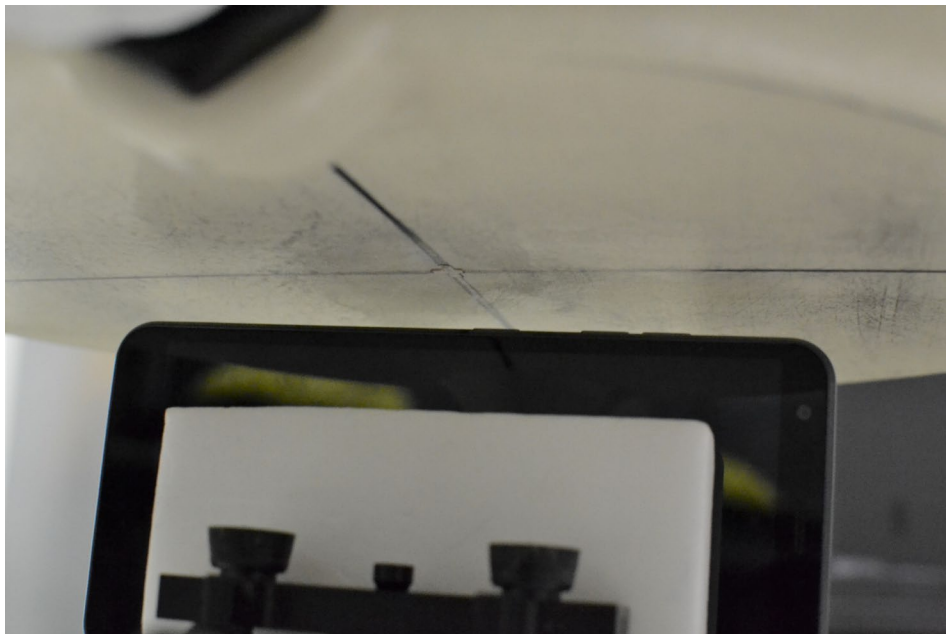


**SAR Test Setup Photo 8 – Bottom Edge 10mm**



<b>FCC ID</b> ZNFX320AA		<b>SAR EVALUATION REPORT</b>		<b>Approved by:</b> Quality Manager
<b>Test Dates:</b> 05/21/19 - 06/10/19	<b>DUT Type:</b> Portable Handset			<b>APPENDIX F:</b> Page 7 of 9



**SAR Test Setup Photo 9 – Right Edge 10mm**



**SAR Test Setup Photo 10 – Left Edge 10mm**



FCC ID ZNFX320AA		SAR EVALUATION REPORT		<b>Approved by:</b> Quality Manager
<b>Test Dates:</b> 05/21/19 - 06/10/19	<b>DUT Type:</b> Portable Handset	APPENDIX F: Page 8 of 9		



Horizontal reference line



**SAR Test Setup Photo 11 – Vertical and Horizontal Reference Lines**

<b>FCC ID</b> ZNFX320AA		<b>SAR EVALUATION REPORT</b>		<b>Approved by:</b> Quality Manager
<b>Test Dates:</b> 05/21/19 - 06/10/19	<b>DUT Type:</b> Portable Handset			<b>APPENDIX F:</b> Page 9 of 9