

FCC SAR TEST REPORT

For

LG Electronics USA, Inc.

4G Mobile phone

Model No.:LM-X210LMW

Prepared For : LG Electronics USA, Inc.
Address : 1000 Sylvan Ave., Englewood Cliffs, New Jersey 07632, United States

Prepared By : Shenzhen Anbotek Compliance Laboratory Limited
Address : 1/F, Building D, Sogood Science and Technology Park, Sanwei
community, Hangcheng Street, Bao'an District, Shenzhen, Guangdong,
China.518102
Tel: (86) 755-26066440 Fax: (86) 755-26014772

Report Number : 18220WC000016-01
Date of Receipt : Jun. 24, 2019
Date of Test : Jun. 24, 2019~ Feb. 21, 2020
Date of Report : Feb. 21, 2020

Contents

1. Statement of Compliance	6
2. General Information	7
2.1. Client Information	7
2.2. Testing Laboratory Information	7
2.3. Description of Equipment Under Test (EUT)	8
2.4. Device Category and SAR Limits	9
2.5. Applied Standard	9
2.6. Environment of Test Site	9
2.7. Test Configuration	9
3. Specific Absorption Rate (SAR)	10
3.1. Introduction	10
3.2. SAR Definition	10
4. SAR Measurement System	11
4.1. E-Field Probe	12
4.2. Data Acquisition Electronics (DAE)	12
4.3. Robot	13
4.4. Measurement Server	13
4.5. Phantom	14
4.6. Device Holder	15
4.7. Data Storage and Evaluation	16
5. Test Equipment List	18
6. Tissue Simulating Liquids	19
7. System Verification Procedures	21
8. EUT Testing Position	23
8.1. Define two imaginary lines on the handset	23
8.2. Position for Cheek/Touch	24
8.3. Position for Ear / 15° Tilt	24
8.4. Body Worn Position	25
9. Measurement Procedures	26
9.1. Spatial Peak SAR Evaluation	26
9.2. Power Reference Measurement	27
9.3. Area Scan Procedures	27
9.4. Zoom Scan Procedures	28
9.5. Volume Scan Procedures	29
9.6. Power Drift Monitoring	29
10. Conducted Power	30
11. Antenna Location	43
12. SAR Test Results Summary	45
12.1. Head SAR Results	45
12.2. Body SAR Results	48

13. Simultaneous Transmission Analysis 51
 Simultaneous TX SAR Considerations..... 51
 Evaluation of Simultaneous SAR 51
14. Measurement Uncertainty 52
Appendix A. EUT Photos and Test Setup Photos 53
Appendix B. Plots of SAR System Check 55
Appendix C. Plots of SAR Test Data 63
Appendix D. DASY System Calibration Certificate..... 79



TEST REPORT

Applicant : LG Electronics USA, Inc.
Manufacturer : OPTIEMUS ELECTRONICS LIMITED
Product Name : 4G Mobile phone
Model No. : LM-X210LMW
Trade Mark : LG
Rating(s) : DC 3.85V From Battery or DC 5V From USB

**Test Standard(s) : IEEE 1528-2013;
ANSI/IEEE C95.1:2005; FCC 47 CFR Part 2 (2.1093);**

The device described above is tested by Shenzhen Anbotek Compliance Laboratory Limited to determine the maximum emission levels emanating from the device and the severe levels of the device can endure and its performance criterion. The measurement results are contained in this test report and Shenzhen Anbotek Compliance Laboratory Limited is assumed full of responsibility for the accuracy and completeness of these measurements. Also, this report shows that the EUT (Equipment Under Test) is technically compliant with the IEEE 1528-2013, FCC 47 CFR Part 2 (2.1093), ANSI/IEEE C95.1:2005 requirements.

This report applies to above tested sample only and shall not be reproduced in part without written approval of Shenzhen Anbotek Compliance Laboratory Limited.

Date of Test Jun. 24, 2019~ Feb. 21, 2020

Prepared By



Bobby Wang

(Engineer / Bobby Wang)

Reviewer

Snowy Meng

(Supervisor / Snowy Meng)

Approved & Authorized Signer

Sally Zhang

(Manager / Sally Zhang)

Version

Version No.	Date	Description
01	2020-02-21	Original

Anbotek

1. Statement of Compliance

<Highest SAR Summary>

This device is in compliance with Specific Absorption Rate (SAR) for general population/uncontrolled exposure limits (1.6 W/kg) specified in FCC 47 CFR part 2 (2.1093) and ANSI/IEEE C95.1-2005, and had been tested in accordance with the measurement methods and procedures specified in IEEE 1528-2013

The maximum results of Specific Absorption Rate (SAR) found during testing are as follows.

<Highest SAR Summary>

FrequencyBand	Highest Reported 1g-SAR(W/Kg)		SAR Test Limit (W/Kg)
	Head	Body (10mm)	
GSM 850	0.279	0.769	1.6
GSM1900	0.357	0.688	
WCDMA Band V	0.489	0.657	
WCDMA Band II	0.255	0.545	
LTE Band 5	0.674	0.537	
LTE Band 38	0.247	0.525	
LTE Band 41	0.274	0.566	
WLAN2.4G	0.249	0.275	
Simultaneous Reported SAR	1.044		
Test Result	PASS		

This device is in compliance with Specific Absorption Rate (SAR) for general population/uncontrolled exposure limits (1.6 W/kg) specified in FCC 47 CFR part 2 (2.1093) and ANSI/IEEE C95.1-2005, and had been tested in accordance with the measurement methods and procedures specified in IEEE 1528-2013

2. General Information

2.1. Client Information

Applicant	:	LG Electronics USA, Inc.
Address	:	1000 Sylvan Ave., Englewood Cliffs, New Jersey 07632, United States
Manufacturer	:	OPTIEMUS ELECTRONICS LIMITED
Address	:	D-348, Sector 63, Gautam Budh Nagar, Noida, Uttar Pradesh 201307 India
Factory	:	OPTIEMUS ELECTRONICS LIMITED
Address	:	D-348, Sector 63, Gautam Budh Nagar, Noida, Uttar Pradesh 201307 India

2.2. Testing Laboratory Information

Test Site:	:	Shenzhen Anbotek Compliance Laboratory Limited
Address:	:	1/F, Building D, Sogood Science and Technology Park, Sanwei community, Hangcheng Street, Bao'an District, Shenzhen, Guangdong, China.518102

2.3. Description of Equipment Under Test (EUT)

Product Name	:	4G Mobile phone
Model No.	:	LM-X210LMW
Trade Mark	:	LG
Test Power Supply	:	DC 3.85V From Battery or DC 5V From USB
Test Sample No.	:	S1(Normal Sample), S2(Engineering Sample)
Tx Frequency	:	GSM850: 824.2 MHz ~ 848.6 MHz GSM1900: 1850.2 MHz ~ 1909.8 MHz WCDMA Band II: 1852.4 MHz ~ 1907.6 MHz WCDMA Band V: 826.4 MHz ~ 846.6 MHz LTE BAND 5: 824MHz ~ 849MHz LTE Band 38:2570~2620 MHz LTE BAND 41: 2555MHz ~ 2655MHz BT: 2402 MHz ~ 2480 MHz BLE: 2402MHz~2480MHz 802.11b/ g/ n: 2412-2462MHz
Type of Modulation	:	GSM,GPRS, EGPRS RMC,AMR 12.2Kbps,HSDPA,HSUPA LTE: QPSK,16QAM GFSK,8DPSK, $\pi/4$ DQPSK WIFI:BPSK,QPSK,16QAM,64QAM
Hardware version	:	V2.0
Software version	:	V2.0
Category of device	:	Portable device
Remark: The above DUT's information was declared by manufacturer. Please refer to the specifications or user's manual for more detailed description.		

2.4. Device Category and SAR Limits

This device belongs to portable device category because its radiating structure is allowed to be used within 20 centimeters of the body of the user. Limit for General Population/Uncontrolled exposure should be applied for this device, it is 1.6 W/kg as averaged over any 1 gram of tissue.

2.5. Applied Standard

The Specific Absorption Rate (SAR) testing specification, method, and procedure for this device is in accordance with the following standards:

- FCC 47 CFR Part 2 (2.1093:2013)
- ANSI/IEEE C95.1:2005
- IEEE Std 1528:2013
- KDB 865664 D01 SAR Measurement 100 MHz to 6 GHz v01r04
- KDB 865664 D02 RF Exposure Reporting v01r02
- KDB 447498 D01 General RF Exposure Guidance v06
- KDB248227 D01 802.11 Wi-Fi SAR v02r02
- KDB941225 D01 3G SAR Procedures v03r01
- KDB 941225 D05 SAR for LTE Devicesv02r05
- KDB 941225 D06 Hotspot SARv02r01
- KDB648474 D04 Handset SAR v01r03

2.6. Environment of Test Site

Items	Required	Actual
Temperature (°C)	18-25	22~23
Humidity (%RH)	30-70	55~65

2.7. Test Configuration

The device was controlled by using a base station emulator. Communication between the device and the emulator was established by air link. The distance between the EUT and the antenna of the emulator is larger than 50 cm and the output power radiated from the emulator antenna is at least 30 dB smaller than the output power of EUT. The EUT was set from the emulator to radiate maximum output power during all tests. For WLAN SAR testing, WLAN engineering testing software installed on the EUT can provide continuous transmitting RF signal.

3. Specific Absorption Rate (SAR)

3.1. Introduction

SAR is related to the rate at which energy is absorbed per unit mass in an object exposed to a radio field. The SAR distribution in a biological body is complicated and is usually carried out by experimental techniques or numerical modeling. The standard recommends limits for two tiers of groups, occupational/controlled and general population/uncontrolled, based on a person's awareness and ability to exercise control over his or her exposure. In general, occupational/controlled exposure limits are higher than the limits for general population/uncontrolled.

3.2. SAR Definition

The SAR definition is the time derivative (rate) of the incremental energy (dW) absorbed by (dissipated in) an incremental mass (dm) contained in a volume element (dv) of a given density (ρ). The equation description is as below:

$$\text{SAR} = \frac{d}{dt} \left(\frac{dW}{dm} \right) = \frac{d}{dt} \left(\frac{dW}{\rho dv} \right)$$

SAR is expressed in units of Watts per kilogram (W/kg)

SAR measurement can be either related to the temperature elevation in tissue by

$$\text{SAR} = C \left(\frac{\delta T}{\delta t} \right)$$

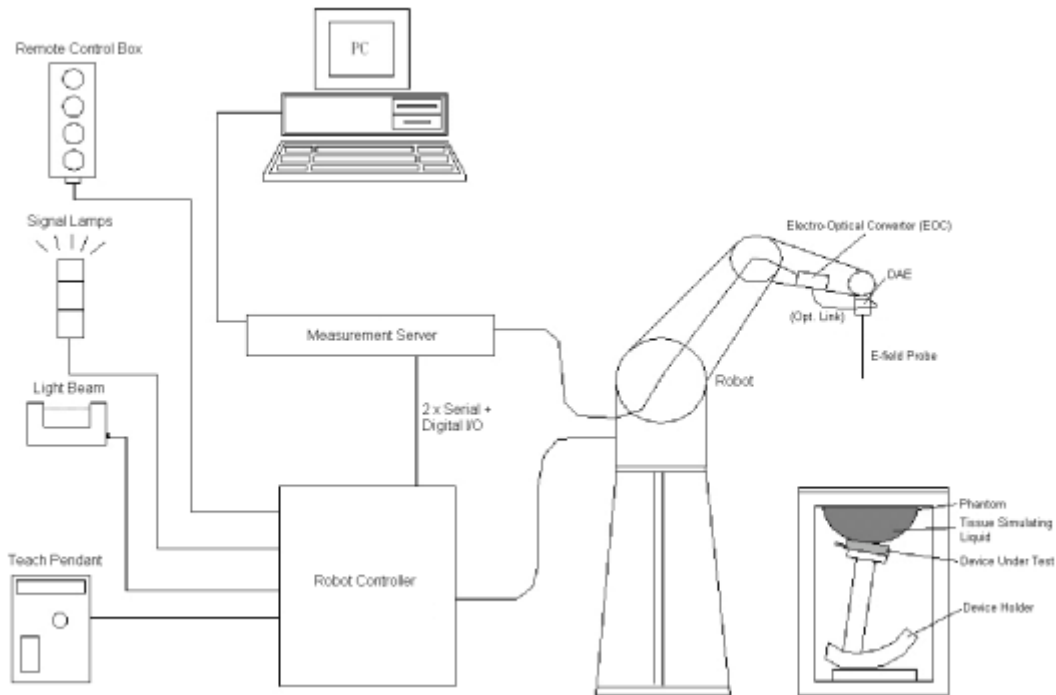
Where: C is the specific heat capacity, δT is the temperature rise and δt is the exposure duration, or related to the electrical field in the tissue by

$$\text{SAR} = \frac{\sigma |E|^2}{\rho}$$

Where: σ is the conductivity of the tissue, ρ is the mass density of the tissue and E is the RMS electrical field strength.

However for evaluating SAR of low power transmitter, electrical field measurement is typically applied.

4. SAR Measurement System



DASY System Configurations

The DASY system for performance compliance tests is illustrated above graphically. This system consists of the following items:

- A standard high precision 6-axis robot with controller, a teach pendant and software
- A data acquisition electronic (DAE) attached to the robot arm extension
- A dosimetric probe equipped with an optical surface detector system
- The electro-optical converter (EOC) performs the conversion between optical and electrical signals
- A measurement server performs the time critical tasks such as signal filtering, control of the robot operation and fast movement interrupts.
- A probe alignment unit which improves the accuracy of the probe positioning
- A computer operating Windows XP
- DASY software
- Remove control with teach pendant and additional circuitry for robot safety such as warning lamps, etc.
- The SAM twin phantom
- A device holder
- Tissue simulating liquid
- Dipole for evaluating the proper functioning of the system


components are described in details in the following sub-sections.

4.1. E-Field Probe

The SAR measurement is conducted with the dosimetric probe (manufactured by SPEAG). The probe is specially designed and calibrated for use in liquid with high permittivity. The dosimetric probe has special calibration in liquid at different frequency. This probe has a built in optical surface detection system to prevent from collision with phantom.

➤ E-Field Probe Specification

<EX3DV4 Probe>

Construction	Symmetrical design with triangular core Built-in shielding against static charges PEEK enclosure material (resistant to organic solvents, e.g., DGBE)	 <p>Photo of EX3DV4</p>
Frequency	10 MHz to 6 GHz; Linearity: ± 0.2 dB	
Directivity	± 0.3 dB in HSL (rotation around probe axis) ± 0.5 dB in tissue material (rotation normal to probe axis)	
Dynamic Range	10 μ W/g to 100 mW/g; Linearity: ± 0.2 dB (noise: typically < 1 μ W/g)	
Dimensions	Overall length: 330 mm (Tip: 20 mm) Tip diameter: 2.5 mm (Body: 12 mm) Typical distance from probe tip to dipole centers: 1 mm	

➤ E-Field Probe Calibration

Each probe needs to be calibrated according to a dosimetric assessment procedure with accuracy better than $\pm 10\%$. The spherical isotropy shall be evaluated and within ± 0.25 dB. The sensitivity parameters (NormX, NormY, and NormZ), the diode compression parameter (DCP) and the conversion factor (ConvF) of the probe are tested. The calibration data can be referred to appendix C of this report.

4.2. Data Acquisition Electronics (DAE)

The data acquisition electronics (DAE) consists of a highly sensitive electrometer-grade preamplifier with auto-zeroing, a channel and gain-switching multiplexer, a fast 16 bit AD-converter and a command decoder and control logic unit. Transmission to the measurement server is accomplished through an optical downlink for data and status information as well as an optical uplink for commands and the clock.

The input impedance of the DAE is 200M Ω ; the inputs are symmetrical and floating. Common mode rejection is above 80dB.

**Photo of DAE**

4.3. Robot

The SPEAG DASY system uses the high precision robots (DASY5: TX60XL) type from Stäubli SA (France). For the 6-axis controllersystem, the robot controller version (DASY5: CS8c) from Stäubli is used. The Stäublirobot series have many features that are important for our application:

- High precision (repeatability ± 0.035 mm)
- High reliability (industrial design)
- Jerk-free straight movements
- Low ELF interference (the closed metallic construction shields against motor control fields)

**Photo of DASY5**

4.4. Measurement Server

The measurement server is based on a PC/104 CPU board with CPU (DASY5: 400 MHz, Intel Celeron), chipdisk (DASY5: 128 MB), RAM (DASY5: 128 MB). The necessary circuits for communication with the DAE electronic box, as well as the 16 bit AD converter system for optical detection and digital I/O interface are contained on the DASY I/O board, which is directly connected to the PC/104 bus of the CPU board.

The measurement server performs all the real-time data evaluation for field measurements and surface

detection, controls robot movements and handles safety operations.



Photo of Server for DASY5

4.5. Phantom

<SAM Twin Phantom>


Shell Thickness	2 ± 0.2 mm; Center ear point: 6 ± 0.2 mm	
Filling Volume	Approx. 25 liters	
Dimensions	Length: 1000 mm; Width: 500 mm; Height: adjustable feet	
Measurement Areas	Left Hand, Right Hand, Flat Phantom	

Photo of SAM Phantom

The bottom plate contains three pair of bolts for locking the device holder. The device holder positions are adjusted to the standard measurement positions in the three sections. A white cover is provided to tap the phantom during off-periods to prevent water evaporation and changes in the liquid parameters. On the phantom top, three reference markers are provided to identify the phantom position with respect to the robot.

<ELI4 Phantom>

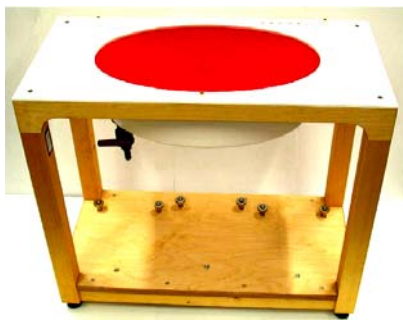
Shell Thickness	2 ± 0.2 mm (sagging: <1%)	
Filling Volume	Approx. 30 liters	
Dimensions	Major ellipse axis: 600 mm Minor axis: 400 mm	

Photo of ELI4 Phantom

The ELI4 phantom is intended for compliance testing of handheld and body-mounted wireless devices in the frequency range of 30 MHz to 6 GHz. ELI4 is fully compatible with standard and all known tissue simulating liquids.

4.6. Device Holder

The SAR in the phantom is approximately inversely proportional to the square of the distance between the source and the liquid surface. For a source at 5 mm distance, a positioning uncertainty of $\pm 0.5\text{mm}$ would produce a SAR uncertainty of $\pm 20\%$. Accurate device positioning is therefore crucial for accurate and repeatable measurements. The positions in which the devices must be measured are defined by the standards.

The DASY device holder is designed to cope with different positions given in the standard. It has two scales for the device rotation (with respect to the body axis) and the device inclination (with respect to the line between the ear reference points). The rotation center for both scales is the ear reference point (ERP). Thus the device needs no repositioning when changing the angles.

The DASY device holder is constructed of low-loss POM material having the following dielectric parameters: relative permittivity $\epsilon = 3$ and loss tangent $\delta = 0.02$. The amount of dielectric material has been reduced in the closest vicinity of the device, since measurements have suggested that the influence of the clamp on the test results could thus be lowered.



Device Holder

4.7. Data Storage and Evaluation

➤ Data Storage

The DASY software stores the assessed data from the data acquisition electronics as raw data (in microvolt readings from the probe sensors), together with all the necessary software parameters for the data evaluation (probe calibration data, liquid parameters and device frequency and modulation data) in measurement files. The post-processing software evaluates the desired unit and format for output each time the data is visualized or exported. This allows verification of the complete software setup even after the measurement and allows correction of erroneous parameter settings. For example, if a measurement has been performed with an incorrect crest factor parameter in the device setup, the parameter can be corrected afterwards and the data can be reevaluated.

The measured data can be visualized or exported in different units or formats, depending on the selected probe type (e.g., [V/m], [A/m], [mW/g]). Some of these units are not available in certain situations or give meaningless results, e.g., a SAR-output in a non-loss media, will always be zero. Raw data can also be exported to perform the evaluation with other software packages.

➤ Data Evaluation

The DASY post-processing software (SEMCAD) automatically executes the following procedures to calculate the field units from the microvolt readings at the probe connector. The parameters used in the evaluation are stored in the configuration modules of the software:

Probe parameters:	- Sensitivity	Norm _i , a _{i0} , a _{i1} , a _{i2}
	- Conversion factor	ConvF _i
	- Diode compression point	dcp _i
Device parameters:	- Frequency	f
	- Crest factor	cf
Media parameters:	- Conductivity	σ
	- Density	ρ

These parameters must be set correctly in the software. They can be found in the component documents or they can be imported into the software from the configuration files issued for the DASY components. In the direct measuring mode of the multi-meter option, the parameters of the actual system setup are used. In the scan visualization and export modes, the parameters stored in the corresponding document files are used.

The first step of the evaluation is a linearization of the filtered input signal to account for the compression characteristics of the detector diode. The compensation depends on the input signal, the diode type and the DC-transmission factor from the diode to the evaluation electronics. If the exciting field is pulsed, the crest factor of the signal must be known to correctly compensate for peak power.

The formula for each channel can be given as:

$$V_i = U_i + U_i^2 \cdot \frac{cf}{dcp_i}$$

with V_i = compensated signal of channel i, (i = x, y, z)

U_i = input signal of channel i, (i = x, y, z)

cf = crest factor of exciting field (DASY parameter)

dcp_i = diode compression point (DASY parameter)

From the compensated input signals, the primary field data for each channel can be evaluated:

$$\text{E-field Probes: } \mathbf{E}_i = \sqrt{\frac{V_i}{\text{Norm}_i \cdot \text{ConvF}}}$$

$$\text{H-field Probes: } \mathbf{H}_i = \sqrt{V_i} \cdot \frac{a_{i0} + a_{i1}f + a_{i2}f^2}{f}$$

with V_i = compensated signal of channel i, (i = x, y, z)

Norm_i = sensor sensitivity of channel i, (i = x, y, z), $\mu\text{V}/(\text{V}/\text{m})^2$ for E-field Probes

ConvF = sensitivity enhancement in solution

a_{ij} = sensor sensitivity factors for H-field probes

f = carrier frequency [GHz]

E_i = electric field strength of channel i in V/m

H_i = magnetic field strength of channel i in A/m

The RSS value of the field components gives the total field strength (Hermitian magnitude):

$$\mathbf{E}_{\text{tot}} = \sqrt{E_x^2 + E_y^2 + E_z^2}$$

The primary field data are used to calculate the derived field units.

$$\text{SAR} = E_{\text{tot}}^2 \cdot \frac{\sigma}{\rho \cdot 1000}$$

with SAR = local specific absorption rate in mW/g

E_{tot} = total field strength in V/m

σ = conductivity in [mho/m] or [Siemens/m]

ρ = equivalent tissue density in g/cm^3

Note that the density is set to 1, to account for actual head tissue density rather than the density of the tissue simulating liquid.

5. Test Equipment List

Manufacturer	Name of Equipment	Type/Model	Serial Number	Calibration	
				Last Cal.	Due Date
SPEAG	835MHz System Validation Kit	D835V2	4d154	Jun 16,2018	Jun 15,2021
SPEAG	1900MHz System Validation Kit	D1900V2	5d175	Jun 15,2018	Jun 14,2021
SPEAG	2450MHz System Validation Kit	D2450V2	910	Jun 15,2018	Jun 14,2021
SPEAG	2600MHz System Validation Kit	D2600V2	1058	Jun. 19, 2018	Jun. 18, 2021
Rohde & Schwarz	UNIVERSAL RADIO COMMUNICATION TESTER	CMU 200	117888	Nov.05, 2018	Nov.04, 2019
Rohde & Schwarz	UNIVERSAL RADIO COMMUNICATION TESTER	CMW500	1201.0002K50-104209-JC	May.20, 2019	May. 19, 2020
SPEAG	Data Acquisition Electronics	DAE4	387	Sept.03,2019	Sept.02,2020
SPEAG	Dosimetric E-Field Probe	EX3DV4	7396	May 06,2019	May 06,2020
Agilent	ENA Series Network Analyzer	E5071C	MY46317418	May. 22, 2019	May. 21, 2020
SPEAG	DAK	DAK-3.5	1226	NCR	NCR
SPEAG	SAM Twin Phantom	QD000P40CD	1802	NCR	NCR
SPEAG	ELI Phantom	QDOVA004AA	2058	NCR	NCR
AR	Amplifier	ZHL-42W	QA1118004	NCR	NCR
Agilent	Power Meter	N1914A	MY50001102	Oct. 28, 2018	Oct. 27, 2019
Agilent	Power Sensor	N8481H	MY51240001	Oct. 29, 2018	Oct. 28, 2019
R&S	Spectrum Analyzer	N9020A	MY51170037	May. 22, 2019	May. 21, 2020
Agilent	Signal Generation	N5182A	MY48180656	May. 22, 2019	May. 21, 2020
Worken	Directional Coupler	0110A05601O-10	COM5BNW1A2	May. 22, 2019	May. 21, 2020

Note:

1. The calibration certificate of DASY can be referred to appendix C of this report.
2. The dipole calibration interval can be extended to 3 years with justification. The dipoles are also not physically damaged, or repaired during the interval.
3. The Insertion Loss calibration of Dual Directional Coupler and Attenuator were characterized via the network analyzer and compensated during system check.
4. The dielectric probe kit was calibrated via the network analyzer, with the specified procedure (calibrated in pure water) and calibration kit (standard) short circuit, before the dielectric measurement. The specific procedure and calibration kit are provided by Agilent.
5. In system check we need to monitor the level on the power meter, and adjust the power amplifier level to have precise power level to the dipole; the measured SAR will be normalized to 1W input power according to the ratio of 1W to the input power to the dipole. For system check, the calibration of the power amplifier is deemed not critically required for correct measurement; the power meter is critical and we do have calibration for it

6. Tissue Simulating Liquids

For the measurement of the field distribution inside the SAM phantom with DASY, the phantom must be filled with around 25 liters of homogeneous body tissue simulating liquid. For head SAR testing, the liquid height from the ear reference point (ERP) of the phantom to the liquid top surface is larger than 15 cm, which is shown in Fig. 6.1. For body SAR testing, the liquid height from the center of the flat phantom to the liquid top surface is larger than 15 cm, which is shown as followed:



Photo of Liquid Height for Head SAR

Photo of Liquid Height for Body SAR

The following table gives the recipes for tissue simulating liquid.

Frequency (MHz)	Water (%)	Sugar (%)	Cellulose (%)	Salt (%)	Preventol (%)	DGBE (%)	Conductivity (σ)	Permittivity (ϵ_r)
For Head								
900	40.3	57.9	0.2	1.4	0.2	0	0.97	41.5
1750	55.2	0	0	0.3	0	44.5	1.37	40.1
1800,1900,2000	55.2	0	0	0.3	0	44.5	1.40	40.0
2450	55.0	0	0	0	0	45.0	1.80	39.2
2600	54.8	0	0	0.1	0	45.1	1.96	39.0
For Body								
900	50.8	48.2	0	0.9	0.1	0	0.97	55.2
1750	70.2	0	0	0.4	0	29.4	1.49	53.4
1800,1900,2000	70.2	0	0	0.4	0	29.4	1.52	53.3
2450	68.6	0	0	0	0	31.4	1.95	52.7
2600	65.5	0	0	0	0	31.5	2.16	52.5

The following table shows the measuring results for simulating liquid.

Tissue Type	Measured Frequency (MHz)	Target Tissue		Measured Tissue				Liquid Temp.	Test Data
		ϵ_r	σ	ϵ_r	Dev. (%)	σ	Dev. (%)		
835H	850	41.5	0.90	41.68	0.43	0.94	4.44	22.1°C	2019-10-12
1900H	1900	40.0	1.40	40.14	0.35	1.43	2.14	22.2°C	2019-10-14
2450H	2450	39.2	1.80	39.06	-0.36	1.76	-2.22	22.1°C	2019-10-15
835B	850	55.2	0.97	55.00	-0.36	0.95	-2.06	22.0°C	2019-10-12
1900B	1900	53.3	1.52	53.01	-0.54	1.55	1.97	22.1°C	2019-10-14
2450B	2450	52.7	1.95	52.12	-1.10	1.93	-1.03	22.1°C	2019-10-15
2600H	2600	39.0	1.96	38.0	-2.56	1.93	-1.53	22.2°C	2019-10-11
2600B	2600	52.2	2.16	52.0	-0.38	2.1	-2.78	22.2°C	2019-10-11

7. System Verification Procedures

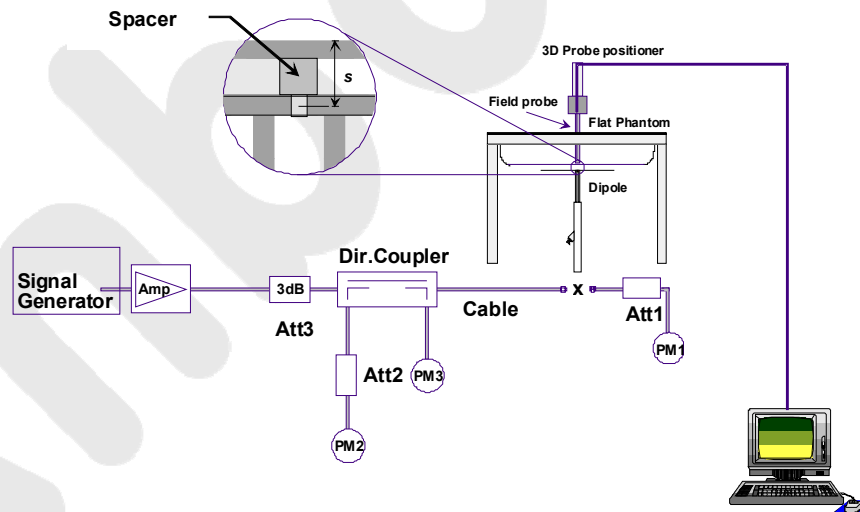
Each DASY system is equipped with one or more system validation kits. These units, together with the predefined measurement procedures within the DASY software, enable the user to conduct the system performance check and system validation. System validation kit includes a dipole, tripod holder to fix it underneath the flat phantom and a corresponding distance holder.

➤ Purpose of System Performance check

The system performance check verifies that the system operates within its specifications. System and operator errors can be detected and corrected. It is recommended that the system performance check be performed prior to any usage of the system in order to guarantee reproducible results. The system performance check uses normal SAR measurements in a simplified setup with a well characterized source. This setup was selected to give a high sensitivity to all parameters that might fail or vary over time. The system check does not intend to replace the calibration of the components, but indicates situations where the system uncertainty is exceeded due to drift or failure.

➤ System Setup

In the simplified setup for system evaluation, the EUT is replaced by a calibrated dipole and the power source is replaced by a continuous wave that comes from a signal generator. The calibrated dipole must be placed beneath the flat phantom section of the SAM twin phantom with the correct distance holder. The distance holder should touch the phantom surface with a light pressure at the reference marking and be oriented parallel to the long side of the phantom. The equipment setup is shown below:



System Setup for System Evaluation

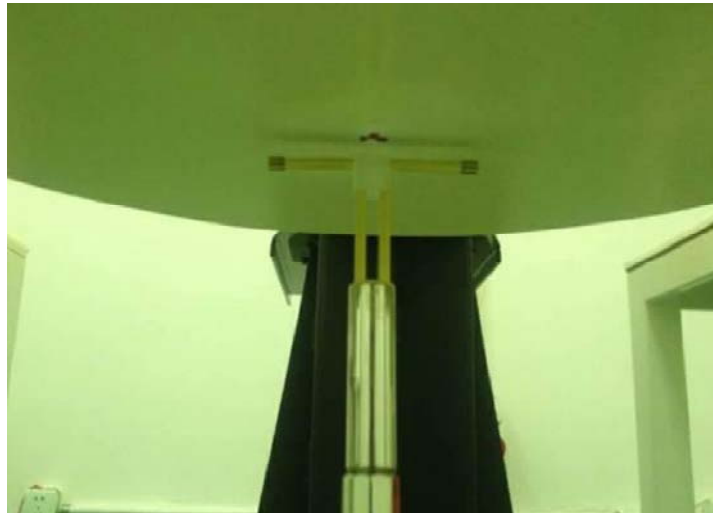


Photo of Dipole Setup

➤ **Validation Results**

Comparing to the original SAR value provided by SPEAG, the verification data should be within its specification of 10%. The table below shows the target SAR and measured SAR after normalized to 1W input power. It indicates that the system performance check can meet the variation criterion and the plots can be referred to Appendix A of this report.

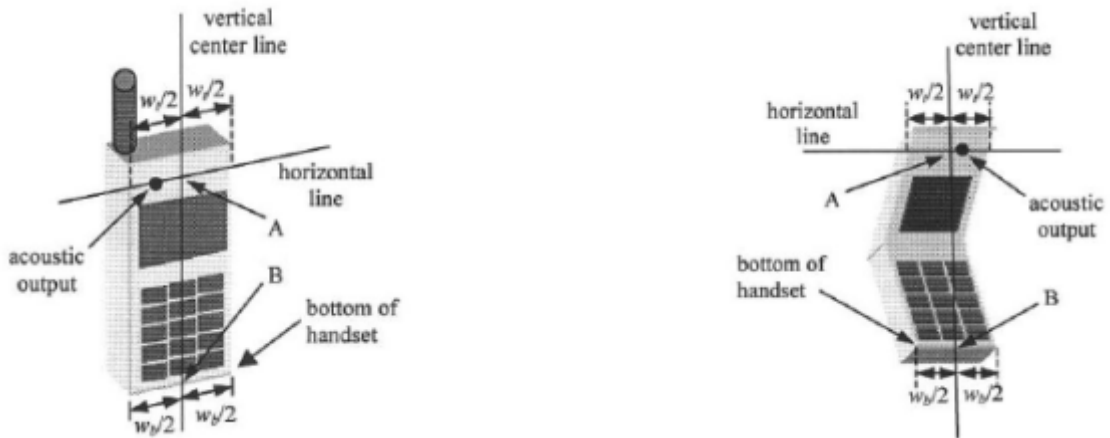
Date	Frequency (MHz)	Liquid Type	Power fed onto reference dipole (mW)	Targeted SAR (W/kg)	Measured SAR (W/kg)	Normalized SAR (W/kg)	Deviation (%)
2019-10-12	850	Head	250	9.24	2.28	9.12	-1.30
2019-10-14	1900	Head	250	40.4	9.76	39.04	-3.37
2019-10-15	2450	Head	250	52.4	12.58	50.32	-3.97
2019-10-12	850	Body	250	9.57	2.41	9.64	0.73
2019-10-14	1900	Body	250	40.1	10.26	41.04	2.34
2019-10-15	2450	Body	250	51.8	12.74	50.96	-1.62
2019-10-11	2600	Body	250	55.3	13.8	55.2	-0.18
2019-10-11	2600	Head	250	55.9	14.1	56.4	0.89

Target and Measurement SAR after Normalized

8. EUT Testing Position

8.1. Define two imaginary lines on the handset

- The vertical centerline passes through two points on the front side of the handset - the midpoint of the width w_t of the handset at the level of the acoustic output, and the midpoint of the width w_b of the bottom of the handset.
- The horizontal line is perpendicular to the vertical centerline and passes through the center of the acoustic output. The horizontal line is also tangential to the face of the handset at point A.
- The two lines intersect at point A. Note that for many handsets, point A coincides with the center of the acoustic output; however, the acoustic output may be located elsewhere on the horizontal line. Also note that the vertical centerline is not necessarily parallel to the front face of the handset, especially for clamshell handsets, handsets with flip covers, and other irregularly shaped handsets.



Handset Vertical and Horizontal Reference Lines

8.2. Position for Cheek/Touch

- (a) To position the device with the vertical center line of the body of the device and the horizontal line crossing the center piece in a plane parallel to the sagittal plane of the phantom. While maintaining the device in this plane, align the vertical center line with the reference plane containing the three ear and mouth reference point (M: Mouth, RE: Right Ear, and LE: Left Ear) and align the center of the ear piece with the line RE-LE.
- (b) To move the device towards the phantom with the ear piece aligned with the line LE-RE until the phone touched the ear. While maintaining the device in the reference plane and maintaining the phone contact with the ear, move the bottom of the phone until any point on the front side is in contact with the cheek of the phantom or until contact with the ear is lost.



Cheek Position

8.3. Position for Ear / 15°Tilt

- (a) To position the device in the “cheek” position described above.
- (b) While maintaining the device the reference plane described above and pivoting against the ear, moves it outward away from the mouth by an angle of 15 degrees or until contact with the ear is lost.

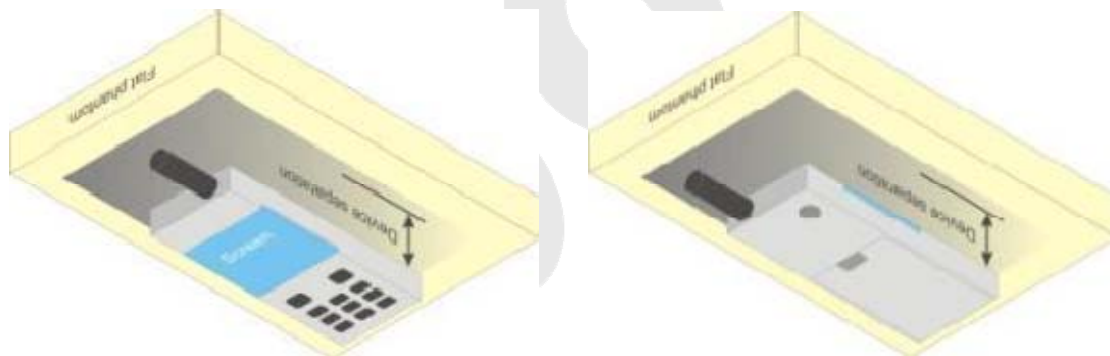


Tilt Position

8.4. Body Worn Position

Body-worn operating configurations are tested with the belt-clips and holsters attached to the device and positioned against a flat phantom in a normal use configuration. Per KDB 648474 D04, body-worn accessory exposure is typically related to voice mode operations when handsets are carried in body-worn accessories. The body-worn accessory procedures in FCC KDB 447498 D01 should be used to test for body-worn accessory SAR compliance, without a headset connected to it. This enables the test results for such configuration to be compatible with that required for hotspot mode when the body-worn accessory test separation distance is greater than or equal to that required for hotspot mode, when applicable. When the reported SAR for body-worn accessory, measured without headset connected to the handset is $< 1.2 \text{ W/kg}$, the highest reported SAR configuration for that wireless mode and frequency band should be repeated for that body-worn accessory with a handset attached to the handset.

Accessories for body-worn operation configurations are divided into two categories: those that do not contain metallic components and those that do contain metallic components and those that do contain metallic components. When multiple accessories that do not contain metallic components are supplied with the device, the device is tested with only the accessory that dictates the closest spacing to the body. Then multiple accessories that contain metallic components are test with the device with each accessory. If multiple accessories share an identical metallic component (i.e. the same metallic belt-clip used with different holsters with no other metallic components) only the accessory that dictates the closest spacing to the body is tested.



Body Worn Position

9. Measurement Procedures

The measurement procedures are as follows:

- (a) Use base station simulator (if applicable) or engineering software to transmit RF power continuously (continuous Tx) in the middle channel.
- (b) Keep EUT to radiate maximum output power or 100% duty factor (if applicable)
- (c) Measure output power through RF cable and power meter.
- (d) Place the EUT in the positions as setup photos demonstrates.
- (e) Set scan area, grid size and other setting on the DASY software.
- (f) Measure SAR transmitting at the middle channel for all applicable exposure positions.
- (g) Identify the exposure position and device configuration resulting the highest SAR
- (h) Measure SAR at the lowest and highest channels at the worst exposure position and device configuration if applicable.

According to the test standard, the recommended procedure for assessing the peak spatial-average SAR value consists of the following steps:

- (a) Power reference measurement
- (b) Area scan
- (c) Zoom scan
- (d) Power drift measurement

9.1. Spatial Peak SAR Evaluation

The procedure for spatial peak SAR evaluation has been implemented according to the test standard. It can be conducted for 1g and 10g, as well as for user-specific masses. The DASY software includes all numerical procedures necessary to evaluate the spatial peak SAR value.

The base for the evaluation is a "cube" measurement. The measured volume must include the 1g and 10g cubes with the highest averaged SAR values. For that purpose, the center of the measured volume is aligned to the interpolated peak SAR value of a previously performed area scan.

The entire evaluation of the spatial peak values is performed within the post-processing engine (SEMCAD). The system always gives the maximum values for the 1g and 10g cubes. The algorithm to find the cube with highest averaged SAR is divided into the following stages:

- (a) Extraction of the measured data (grid and values) from the Zoom Scan
- (b) Calculation of the SAR value at every measurement point based on all stored data (A/D values and measurement parameters)
- (c) Generation of a high-resolution mesh within the measured volume
- (d) Interpolation of all measured values from the measurement grid to the high-resolution grid
- (e) Extrapolation of the entire 3-D field distribution to the phantom surface over the distance from sensor to surface
- (f) Calculation of the averaged SAR within masses of 1g and 10g

9.2. Power Reference Measurement

The Power Reference Measurement and Power Drift Measurements are for monitoring the power drift of the device under test in the batch process. The minimum distance of probe sensors to surface determines the closest measurement point to phantom surface. This distance cannot be smaller than the distance of sensor calibration points to probe tip as defined in the probe properties.

9.3. Area Scan Procedures

The area scan is used as a fast scan in two dimensions to find the area of high field values, before doing a fine measurement around the hot spot. The sophisticated interpolation routines implemented in DASY software can find the maximum found in the scanned area, within a range of the global maximum. The range (in dB0 is specified in the standards for compliance testing. For example, a 2 dB range is required in IEEE standard 1528 and IEC 62209 standards, whereby 3 dB is a requirement when compliance is assessed in accordance with the ARIB standard (Japan), if only one zoom scan follows the area scan, then only the absolute maximum will be taken as reference. For cases where multiple maximums are detected, the number of zoom scans has to be increased accordingly.

Area scan parameters extracted from FCC KDB 865664 D01 SAR measurement 100 MHz to 6 GHz.

	≤ 3 GHz	> 3 GHz
Maximum distance from closest measurement point (geometric center of probe sensors) to phantom surface	5 ± 1 mm	$\frac{1}{2} \cdot \delta \cdot \ln(2) \pm 0.5$ mm
Maximum probe angle from probe axis to phantom surface normal at the measurement location	30° ± 1°	20° ± 1°
Maximum area scan spatial resolution: $\Delta x_{Area}, \Delta y_{Area}$	≤ 2 GHz: ≤ 15 mm 2 – 3 GHz: ≤ 12 mm	3 – 4 GHz: ≤ 12 mm 4 – 6 GHz: ≤ 10 mm
	When the x or y dimension of the test device, in the measurement plane orientation, is smaller than the above, the measurement resolution must be ≤ the corresponding x or y dimension of the test device with at least one measurement point on the test device.	

9.4. Zoom Scan Procedures

Zoom scans are used to assess the peak spatial SAR values within a cubic averaging volume containing 1 gram and 10gram of simulated tissue. The zoom scan measures points (refer to table below) within a cube whose base faces are centered on the maxima found in a preceding area scan job within the same procedure. When the measurement is done, the zoom scan evaluates the averaged SAR for 1 gram and 10 gram and displays these values next to the job's label.

Zoom scan parameters extracted from FCC KDB 865664 D01 SAR measurement 100 MHz to 6 GHz.

		≤ 3 GHz	> 3 GHz
Maximum zoom scan spatial resolution: $\Delta x_{Zoom}, \Delta y_{Zoom}$		≤ 2 GHz: ≤ 8 mm 2 – 3 GHz: < 5 mm *	3 – 4 GHz: ≤ 5 mm * 4 – 6 GHz: < 4 mm *
Maximum zoom scan spatial resolution, normal to phantom surface	uniform grid: $\Delta z_{Zoom}(n)$	≤ 5 mm	3 – 4 GHz: ≤ 4 mm 4 – 5 GHz: ≤ 3 mm 5 – 6 GHz: ≤ 2 mm
	graded grid $\Delta z_{Zoom}(1)$: between 1 st two points closest to phantom surface	≤ 4 mm	3 – 4 GHz: ≤ 3 mm 4 – 5 GHz: ≤ 2.5 mm 5 – 6 GHz: ≤ 2 mm
	$\Delta z_{Zoom}(n>1)$: between subsequent points	$\leq 1.5 \cdot \Delta z_{Zoom}(n-1)$	
Minimum zoom scan volume	x, y, z	≥ 30 mm	3 – 4 GHz: ≥ 28 mm 4 – 5 GHz: ≥ 25 mm 5 – 6 GHz: ≥ 22 mm
<p>Note: δ is the penetration depth of a plane-wave at normal incidence to the tissue medium; see draft standard IEEE P1528-2011 for details.</p> <p>* When zoom scan is required and the <i>reported</i> SAR from the <i>area scan based 1-g SAR estimation</i> procedures of KDB 447498 is ≤ 1.4 W/kg, ≤ 8 mm, ≤ 7 mm and ≤ 5 mm zoom scan resolution may be applied, respectively, for 2 GHz to 3 GHz, 3 GHz to 4 GHz and 4 GHz to 6 GHz.</p>			

9.5. Volume Scan Procedures

The volume scan is used for assess overlapping SAR distributions for antennas transmitting in different frequency bands. It is equivalent to an oversized zoom scan used in standalone measurements. The measurement volume will be used to enclose all the simultaneous transmitting antennas. For antennas transmitting simultaneously in different frequency bands, the volume scan is measured separately in each frequency band. In order to sum correctly to compute the 1g aggregateSAR, the EUT remain in the same test position for all measurements and all volume scan use the same spatial resolution and grid spacing. When all volume scan were completed, the software, SEMCAD postprocessor can combine and subsequently superpose these measurement data to calculating the multiband SAR.

9.6. Power Drift Monitoring

All SAR testing is under the EUT install full charged battery and transmit maximum output power. In DASY measurement software, the power reference measurement and power drift measurement procedures are used for monitoring the power drift of EUT during SAR test. Both these procedures measure the field at a specified reference position before and after the SAR testing. The software will calculate the field difference in dB. If the power drift more than 5%, the SAR will be retested.

10. Conducted Power

<GSM Conducted power>

Band GSM850		Burst Average Power (dBm)			Frame-Average Power (dBm)		
TX Channel	Tune-up	128	190	251	128	190	251
Frequency (MHz)	power	824.2	836.6	848.6	824.2	836.6	848.6
GSM (GMSK, 1 Tx slot)	30.6	30.21	30.51	30.45	21.18	21.48	21.42
GPRS (GMSK, 1 Tx slot)	30.5	30.28	30.49	30.47	21.25	21.46	21.44
GPRS (GMSK, 2 Tx slots)	28.5	28.19	28.47	28.42	22.17	22.45	22.40
GPRS (GMSK, 3 Tx slots)	27.5	27.04	27.35	27.30	22.78	23.09	23.04
GPRS (GMSK, 4 Tx slots)	26.2	25.85	26.16	26.13	22.84	23.15	23.12
EGPRS (GMSK, 1 Tx slot)	26.8	26.53	26.75	26.56	17.50	17.72	17.53
EGPRS (GMSK, 2 Tx slots)	24.5	24.00	24.39	24.18	17.98	18.37	18.16
EGPRS (GMSK, 3 Tx slots)	23.0	22.78	22.64	22.75	18.52	18.38	18.49
EGPRS (GMSK, 4 Tx slots)	21.6	21.39	21.57	21.55	18.38	18.56	18.54
Band GSM1900		Burst Average Power (dBm)			Frame-Average Power (dBm)		
TX Channel	Tune-up	512	661	810	512	661	810
Frequency (MHz)	power	1850.2	1880.0	1909.8	1850.2	1880.0	1909.8
GSM (GMSK, 1 Tx slot)	30.5	30.34	30.40	30.08	21.31	21.37	21.05
GPRS (GMSK, 1 Tx slot)	30.5	30.34	30.29	30.07	21.31	21.26	21.04
GPRS (GMSK, 2 Tx slots)	28.0	27.95	27.92	27.75	21.93	21.90	21.73
GPRS (GMSK, 3 Tx slots)	26.5	26.35	26.34	26.18	22.09	22.08	21.92
GPRS (GMSK, 4 Tx slots)	25.3	25.24	25.26	25.09	22.23	22.25	22.08
EGPRS (GMSK, 1 Tx slot)	28.5	28.20	28.06	28.04	19.17	19.03	19.01
EGPRS (GMSK, 2 Tx slots)	26.0	25.97	25.76	25.81	19.95	19.74	19.79
EGPRS (GMSK, 3 Tx slots)	24.7	24.28	24.65	24.52	20.12	20.39	20.26
EGPRS (GMSK, 4 Tx slots)	23.6	23.57	23.45	23.38	20.56	20.44	20.37

Remark: The frame-averaged power is linearly scaled the maximum burst averaged power over 8 time slots.

The calculated method are shown as below:

Frame-averaged power = Maximum burst averaged power (1 Tx Slot) – 9.03 dB

Frame-averaged power = Maximum burst averaged power (2 Tx Slots) – 6.02 dB

Frame-averaged power = Maximum burst averaged power (3 Tx Slots) - 4.26 dB

Frame-averaged power = Maximum burst averaged power (4 Tx Slots) – 3.01 dB

Note:

1. Per KDB 447498 D01, the maximum output power channel is used for SAR testing and for further SAR test reduction
2. For Head SAR testing, GSM should be evaluated, therefore the EUT was set in GSM Voice for GSM850and GSM1900 due to its highest frame-average power.
3. For Hotspot mode SAR testing, GPRS should be evaluated, therefore the EUT was set inGPRS 4 Tx slots for GSM850and GSM1900 due to its highest frame-average power.

<WCDMA Conducted Power>

The following tests were conducted according to the test requirements outlines in 3GPP TS 34.121 specification. A summary of these settings are illustrated below:

HSDPA Setup Configuration:

- a. The EUT was connected to Base Station Agilent E5515C referred to the Setup Configuration.
- b. The RF path losses were compensated into the measurements.
- c. A call was established between EUT and Base Station with following setting:
 - i. Set Gain Factors (β_c and β_d) and parameters were set according to each
 - ii. Specific sub-test in the following table, C10.1.4, quoted from the TS 34.121
 - iii. Set RMC 12.2Kbps + HSDPA mode.
 - iv. Set Cell Power = -86 dBm
 - v. Set HS-DSCH Configuration Type to FRC (H-set 1, QPSK)
 - vi. Select HSDPA Uplink Parameters
 - vii. Set Delta ACK, Delta NACK and Delta CQI = 8
 - viii. Set Ack-Nack Repetition Factor to 3
 - ix. Set CQI Feedback Cycle (k) to 4 ms
 - x. Set CQI Repetition Factor to 2
 - xi. Power Ctrl Mode = All Up bits
- d. The transmitted maximum output power was recorded.

Table C.10.1.4: β values for transmitter characteristics tests with HS-DPCCH

Sub-test	β_c	β_d	β_d (SF)	β_c/β_d	β_{HS} (Note 1, Note 2)	CM (dB) (Note 3)	MPR (dB) (Note 3)
1	2/15	15/15	64	2/15	4/15	0.0	0.0
2	12/15 (Note 4)	15/15 (Note 4)	64	12/15 (Note 4)	24/15	1.0	0.0
3	15/15	8/15	64	15/8	30/15	1.5	0.5
4	15/15	4/15	64	15/4	30/15	1.5	0.5

Note 1: $\Delta_{ACK}, \Delta_{NACK}$ and $\Delta_{CQI} = 30/15$ with $\beta_{HS} = 30/15 * \beta_c$.

Note 2: For the HS-DPCCH power mask requirement test in clause 5.2C, 5.7A, and the Error Vector Magnitude (EVM) with HS-DPCCH test in clause 5.13.1A, and HSDPA EVM with phase discontinuity in clause 5.13.1AA, Δ_{ACK} and $\Delta_{NACK} = 30/15$ with $\beta_{HS} = 30/15 * \beta_c$, and $\Delta_{CQI} = 24/15$ with $\beta_{HS} = 24/15 * \beta_c$.

Note 3: CM = 1 for $\beta_c/\beta_d = 12/15, \beta_{HS}/\beta_c = 24/15$. For all other combinations of DPCCH, DPDCCH and HS-DPCCH the MPR is based on the relative CM difference. This is applicable for only UEs that support HSDPA in release 6 and later releases.

Note 4: For subtest 2 the β_c/β_d ratio of 12/15 for the TFC during the measurement period (TF1, TF0) is achieved by setting the signalled gain factors for the reference TFC (TF1, TF1) to $\beta_c = 11/15$ and $\beta_d = 15/15$.

Setup Configuration

HSUPA Setup Configuration:

- a. The EUT was connected to Base Station Agilent E5515C referred to the Setup Configuration.
- b. The RF path losses were compensated into the measurements.
- c. A call was established between EUT and Base Station with following setting * :
 - i. Call Configs = 5.2B, 5.9B, 5.10B, and 5.13.2B with QPSK
 - ii. Set the Gain Factors (β_c and β_d) and parameters (AG Index) were set according to each specific sub-test in the following table, C11.1.3, quoted from the TS 34.121
 - iii. Set Cell Power = -86 dBm
 - iv. Set Channel Type = 12.2k + HSPA
 - v. Set UE Target Power
 - vi. Power Ctrl Mode= Alternating bits
 - vii. Set and observe the E-TFCI
 - viii. Confirm that E-TFCI is equal to the target E-TFCI of 75 for sub-test 1, and other subtest's E-TFCI
- d. The transmitted maximum output power was recorded.

Table C.11.1.3: β values for transmitter characteristics tests with HS-DPCCH and E-DCH

Sub-test	β_c	β_d	β_d (SF)	β_c/β_d	β_{HS} (Note 1)	β_{ec}	β_{ed} (Note 5) (Note 6)	β_{ed} (SF)	β_{ed} (Codes)	CM (dB) (Note 2)	MPR (dB) (Note 2)	AG Index (Note 6)	E-TFCI
1	11/15 (Note 3)	15/15 (Note 3)	64	11/15 (Note 3)	22/15	209/225	1309/225	4	1	1.0	0.0	20	75
2	6/15	15/15	64	6/15	12/15	12/15	94/75	4	1	3.0	2.0	12	67
3	15/15	9/15	64	15/9	30/15	30/15	$\beta_{ed1}: 47/15$ $\beta_{ed2}: 47/15$	4 4	2	2.0	1.0	15	92
4	2/15	15/15	64	2/15	4/15	2/15	56/75	4	1	3.0	2.0	17	71
5	15/15 (Note 4)	15/15 (Note 4)	64	15/15 (Note 4)	30/15	24/15	134/15	4	1	1.0	0.0	21	81

Note 1: $\Delta_{ACK}, \Delta_{NACK}$ and $\Delta_{CQI} = 30/15$ with $\beta_{hs} = 30/15 * \beta_c$.

Note 2: CM = 1 for $\beta_c/\beta_d=12/15, \beta_{hs}/\beta_c=24/15$. For all other combinations of DPDCH, DPCCH, HS- DPCCH, E-DPDCH and E-DPCCH the MPR is based on the relative CM difference.

Note 3: For subtest 1 the β_c/β_d ratio of 11/15 for the TFC during the measurement period (TF1, TF0) is achieved by setting the signalled gain factors for the reference TFC (TF1, TF1) to $\beta_c = 10/15$ and $\beta_d = 15/15$.

Note 4: For subtest 5 the β_c/β_d ratio of 15/15 for the TFC during the measurement period (TF1, TF0) is achieved by setting the signalled gain factors for the reference TFC (TF1, TF1) to $\beta_c = 14/15$ and $\beta_d = 15/15$.

Note 5: In case of testing by UE using E-DPDCH Physical Layer category 1, Sub-test 3 is omitted according to TS25.306 Table 5.1g.

Note 6: β_{ed} can not be set directly, it is set by Absolute Grant Value.

Setup Configuration

<WCDMA Conducted Power>

WCDMA	Band II (dBm)				Band V (dBm)			
TX Channel	Tune-up	9262	9400	9538	Tune-up	4132	4183	4233
Frequency (MHz)	power	1852.4	1880.0	1907.6	power	826.4	836.6	846.6
RMC 12.2Kbps	22.7	22.30	22.68	22.34	22.7	22.50	22.32	22.62
HSDPA Subtest-1	22.5	22.06	22.38	22.07	22.5	22.13	22.24	22.42
HSDPA Subtest-2	22.0	21.94	21.66	21.94	22.5	22.18	21.41	22.33
HSDPA Subtest-3	22.5	22.23	21.53	22.45	22.5	22.06	21.49	22.37
HSDPA Subtest-4	21.3	21.28	21.76	21.17	21.7	20.93	21.63	21.49
HSUPA Subtest-1	21.6	20.04	21.55	20.39	21.5	20.75	21.23	20.18
HSUPA Subtest-2	20.5	20.25	20.33	20.36	20.5	20.36	20.21	20.46
HSUPA Subtest-3	21.5	20.99	21.37	20.21	21.3	21.19	21.14	20.73
HSUPA Subtest-4	20.5	19.99	20.42	20.14	20.3	20.30	19.89	20.16
HSUPA Subtest-5	21.7	20.20	21.66	21.04	21.3	19.81	21.25	21.22

General Note

1. Per KDB 941225 D01 v02, RMC 12.2kbps setting is used to evaluate SAR. If AMR 12.2kbps power is < 0.25dB higher than RMC 12.2kbps, SAR tests with AMR 12.2kbps can be excluded.
2. By design, AMR and HSDPA/HSUPA RF power will not be larger than RMC 12.2kbps, detailed information is included in Tune-up Procure exhibit.
3. It is expected by the manufacturer that MPR for some HSDPA/HSUPA subtests may differ from the specification of 3GPP, according to the chipset implementation in this model. The implementation and expected deviation are detailed in tune-up procedure exhibit.

LTE FDD Band 5				
TX Channel Bandwidth	Frequency (MHz)	RB Size/Offset	Burst Average Power [dBm]	
			QPSK	16QAM
1.4 MHz	824.7	1 RB low	23.13	22.69
		1 RB high	23.05	22.59
		50% RB mid	23.07	22.41
		100% RB	23.13	23.09
	836.5	1 RB low	23.22	22.37
		1 RB high	23.23	22.33
		50% RB mid	23.16	22.25
		100% RB	23.13	23.10
	848.3	1 RB low	23.37	22.26
		1 RB high	23.73	23.31
		50% RB mid	23.72	23.28
		100% RB	23.20	23.56
3 MHz	825.5	1 RB low	23.26	21.99
		1 RB high	23.15	21.87
		50% RB mid	23.31	21.82
		100% RB	21.98	21.99
	836.5	1 RB low	23.21	22.00
		1 RB high	23.26	21.98
		50% RB mid	23.23	22.06
		100% RB	22.00	22.03
	847.5	1 RB low	23.38	22.38
		1 RB high	23.66	22.42
		50% RB mid	22.43	22.43
		100% RB	22.41	22.21
5 MHz	826.5	1 RB low	23.19	22.04
		1 RB high	23.12	22.13
		50% RB mid	23.13	22.15
		100% RB	22.16	21.66
	836.5	1 RB low	23.02	21.61
		1 RB high	23.19	21.75
		50% RB mid	22.07	22.08
		100% RB	22.09	22.09
	846.5	1 RB low	23.34	22.64
		1 RB high	23.21	22.80
		50% RB mid	23.61	22.79
		100% RB	22.58	22.56

10 MHz	829.0	1 RB low	23.03	22.02
		1 RB high	22.92	21.91
		50% RB mid	23.17	21.99
		100% RB	22.14	22.10
	836.5	1 RB low	23.10	22.59
		1 RB high	23.25	22.51
		50% RB mid	23.31	22.78
		100% RB	22.14	22.14
	844.0	1 RB low	23.31	22.14
		1 RB high	23.74	22.21
		50% RB mid	23.65	22.54
		100% RB	22.28	22.27

LTE Band 41				
TX Channel Bandwidth	Frequency (MHz)	RB Size/Offset	Burst Average Power [dBm]	
			QPSK	16QAM
5 MHz	2557.5	1 RB low	23.81	23.39
		1 RB mid	23.87	23.38
		1 RB high	23.94	23.40
		50% RB low	23.36	23.36
		50% RB mid	23.42	23.43
		50% RB high	23.37	23.43
		100% RB	22.93	21.95
	2600.0	1 RB low	23.53	23.31
		1 RB mid	23.58	23.30
		1 RB high	23.61	23.35
		50% RB low	23.30	23.28
		50% RB mid	23.29	23.30
		50% RB high	23.25	23.26
		100% RB	22.82	22.05
	2652.5	1 RB low	23.42	22.29
		1 RB mid	23.43	22.24
		1 RB high	23.48	22.17
		50% RB low	22.24	22.31
		50% RB mid	22.18	22.27
		50% RB high	22.23	22.23
		100% RB	22.55	21.76
10 MHz	2560.0	1 RB low	23.65	22.52
		1 RB mid	23.64	22.50
		1 RB high	23.74	22.57
		50% RB low	22.71	22.71
		50% RB mid	22.71	22.71
		50% RB high	22.77	22.77
		100% RB	22.73	21.78
	2600.0	1 RB low	24.00	23.06
		1 RB mid	23.98	23.19
		1 RB high	23.96	23.35
		50% RB low	22.88	22.88
		50% RB mid	22.87	22.87
		50% RB high	22.79	22.79
		100% RB	22.76	22.06
2650.0	1 RB low	23.48	22.70	
	1 RB mid	23.57	22.62	

		1 RB high	23.52	22.62
		50% RB low	22.48	22.49
		50% RB mid	22.50	22.50
		50% RB high	22.41	22.41
		100% RB	22.40	21.44
15 MHz	2562.5	1 RB low	23.84	22.26
		1 RB mid	23.79	21.93
		1 RB high	23.80	21.94
		50% RB low	22.30	22.21
		50% RB mid	21.88	22.10
		50% RB high	21.94	21.91
		100% RB	22.87	22.05
	2600.0	1 RB low	23.89	22.25
		1 RB mid	23.88	22.36
		1 RB high	23.97	23.35
		50% RB low	23.07	23.07
		50% RB mid	23.19	23.19
		50% RB high	23.38	23.38
		100% RB	22.81	21.97
	2647.5	1 RB low	23.61	22.73
		1 RB mid	23.63	22.64
		1 RB high	23.47	22.56
		50% RB low	22.77	22.79
		50% RB mid	22.66	22.70
		50% RB high	22.58	22.56
		100% RB	22.40	21.45
20 MHz	2570.0	1 RB low	24.13	23.71
		1 RB mid	24.18	23.62
		1 RB high	24.01	23.64
		50% RB low	22.98	22.11
		50% RB mid	23.02	22.07
		50% RB high	22.89	21.99
		100% RB	22.97	22.05
	2600.0	1 RB low	23.84	23.54
		1 RB mid	23.96	23.57
		1 RB high	23.97	23.53
		50% RB low	22.86	21.97
		50% RB mid	22.85	21.96
		50% RB high	22.88	21.99
		100% RB	22.87	21.86
2640.0	1 RB low	23.67	23.30	

		1 RB mid	23.51	23.28
		1 RB high	23.52	23.29
		50% RB low	22.66	21.91
		50% RB mid	22.66	21.92
		50% RB high	22.65	21.81
		100% RB	22.60	21.76

<i>LTE Band 38</i>				
TX Channel Bandwidth	Frequency (MHz)	RB Size/Offset	Burst Average Power [dBm]	
			QPSK	16QAM
5 MHz	2572.5	1 RB low	23.71	23.28
		1 RB mid	23.77	23.13
		1 RB high	23.75	23.22
		50% RB low	23.09	23.11
		50% RB mid	23.22	23.15
		50% RB high	23.16	23.19
		100% RB	22.67	21.89
	2595.0	1 RB low	23.34	23.18
		1 RB mid	23.38	23.20
		1 RB high	23.39	23.19
		50% RB low	23.13	23.19
		50% RB mid	23.13	23.29
		50% RB high	23.06	22.99
		100% RB	22.53	22.03
	2617.5	1 RB low	23.14	22.05
		1 RB mid	23.32	21.97
		1 RB high	23.32	21.89
		50% RB low	22.02	22.04
		50% RB mid	22.00	22.24
		50% RB high	21.98	21.94
		100% RB	22.40	21.47
10 MHz	2575.0	1 RB low	23.54	22.44
		1 RB mid	23.54	22.22
		1 RB high	23.57	22.39
		50% RB low	22.60	22.65
		50% RB mid	22.63	22.69
		50% RB high	22.50	22.59
		100% RB	22.64	21.51
	2595.0	1 RB low	23.80	23.00

		1 RB mid	23.87	23.06	
		1 RB high	23.79	23.19	
		50% RB low	22.77	22.62	
		50% RB mid	22.85	22.70	
		50% RB high	22.70	22.54	
		100% RB	22.64	22.05	
	2615.0	1 RB low	23.28	22.66	
		1 RB mid	23.44	22.39	
		1 RB high	23.32	22.44	
		50% RB low	22.20	22.49	
		50% RB mid	22.35	22.22	
		50% RB high	22.21	22.36	
	15 MHz	2577.5	100% RB	22.11	21.35
1 RB low			23.84	22.00	
1 RB mid			23.76	21.90	
1 RB high			23.75	21.67	
50% RB low			22.27	22.02	
50% RB mid			21.66	21.96	
2595.0		50% RB high	21.90	21.76	
		100% RB	22.59	22.04	
		1 RB low	23.83	22.14	
		1 RB mid	23.70	22.06	
		1 RB high	23.85	23.34	
		50% RB low	22.87	22.84	
2612.5		50% RB mid	22.90	22.89	
		50% RB high	23.34	23.33	
		100% RB	22.53	21.85	
		1 RB low	23.52	22.43	
		1 RB mid	23.40	22.41	
		1 RB high	23.38	22.47	
20 MHz		2580.0	50% RB low	22.57	22.53
			50% RB mid	22.53	22.66
			50% RB high	22.55	22.48
	100% RB		22.38	21.33	
	1 RB low		23.87	23.61	
	1 RB mid		23.91	23.35	
	1 RB high		23.91	23.35	
		50% RB low	22.96	21.96	
		50% RB mid	22.89	22.00	
		50% RB high	22.63	21.92	
		100% RB	22.70	22.03	

	2595.0	1 RB low	23.72	23.48
		1 RB mid	23.79	23.40
		1 RB high	23.80	23.33
		50% RB low	22.57	21.79
		50% RB mid	22.83	21.72
		50% RB high	22.61	21.99
		100% RB	22.76	21.69
	2610.0	1 RB low	23.52	23.15
		1 RB mid	23.40	23.08
		1 RB high	23.36	23.06
		50% RB low	22.52	21.62
		50% RB mid	22.59	21.67
		50% RB high	22.47	21.61
		100% RB	22.32	21.71

<WLAN 2.4GHz Conducted Power>

Mode	Channel	Frequency (MHz)	Conducted Output Power(Peak, dBm)	Tune-up Power (dBm)	Test Rate Data
802.11b	1	2412	12.24	12.3	1 Mbps
	6	2437	12.12	12.3	1 Mbps
	11	2462	12.09	12.3	1 Mbps
802.11g	1	2412	11.46	11.5	6 Mbps
	6	2437	11.15	11.5	6 Mbps
	11	2462	11.04	11.5	6 Mbps
802.11n(20MHz)	1	2412	10.39	10.5	MCS0
	6	2437	10.27	10.5	MCS0
	11	2462	10.11	10.5	MCS0

Note:

1. Per KDB 447498 D01, the 1-g SAR test exclusion thresholds for 100 MHz to 6 GHz at *test separation distances* ≤ 50 mm are determined by:

$$[(\text{max. power of channel, including tune-up tolerance, mW}) / (\text{min. test separation distance, mm})] \cdot [\sqrt{f(\text{GHz})}] \leq 3.0$$

for 1-g SAR, where

f(GHz) is the RF channel transmit frequency in GHz

Power and distance are rounded to the nearest mW and mm before calculation

The result is rounded to one decimal place for comparison

Mode	Frequency (GHz)	Tune-up Power (dBm)	Max. Power (mW)	Test distance (mm)	Result	exclusion thresholds for 1-g SAR
802.11b	2450	12.3	16.98	5	5.32	3.0
802.11b	2450	12.3	16.98	10	2.66	3.0

2. Base on the result of note1, RF exposure evaluation of 802.11 b mode is required.

3. Per KDB 248227 D01, choose the highest output power channel to test SAR and determine further SAR exclusion.

4. Per KDB 248227 D01, In the 2.4 GHz band, separate SAR procedures are applied to DSSS and OFDM configurations to simplify DSSS test requirements. SAR is not required for the following 2.4 GHz OFDM conditions:

1) When KDB Publication 447498 SAR test exclusion applies to the OFDM configuration.

2) When the highest reported SAR for DSSS is adjusted by the ratio of OFDM to DSSS specified maximum output power and the adjusted SAR is ≤ 1.2 W/kg.

<Bluetooth Conducted Power>

Mode	Channel	Frequency (MHz)	Conducted Power (dBm)	Tune-up power(dBm)
BLE-GFSK	00	2402	-0.021	0
	19	2440	-0.753	0
	39	2480	-1.106	0
GFSK	00	2402	4.56	5.0
	39	2441	4.21	5.0
	78	2480	4.08	5.0
π/4DQPSK	00	2402	4.43	4.5
	39	2441	3.87	4.5
	78	2480	3.62	4.5
8DPSK	00	2402	4.26	4.5
	39	2441	4.31	4.5
	78	2480	3.26	4.5

Note:

Per KDB 447498 D01v05r02, the 1-g and 10-g SAR test exclusion thresholds for 100 MHz to 6 GHz at test separation distances ≤ 50 mm are determined by:

$[(\text{max. power of channel, including tune-up tolerance, mW}) / (\text{min. test separation distance, mm})] \cdot [\sqrt{f(\text{GHz})}] \leq 3.0$
for 1-g SAR and ≤ 7.5 for 10-g extremity SAR

f(GHz) is the RF channel transmit frequency in GHz

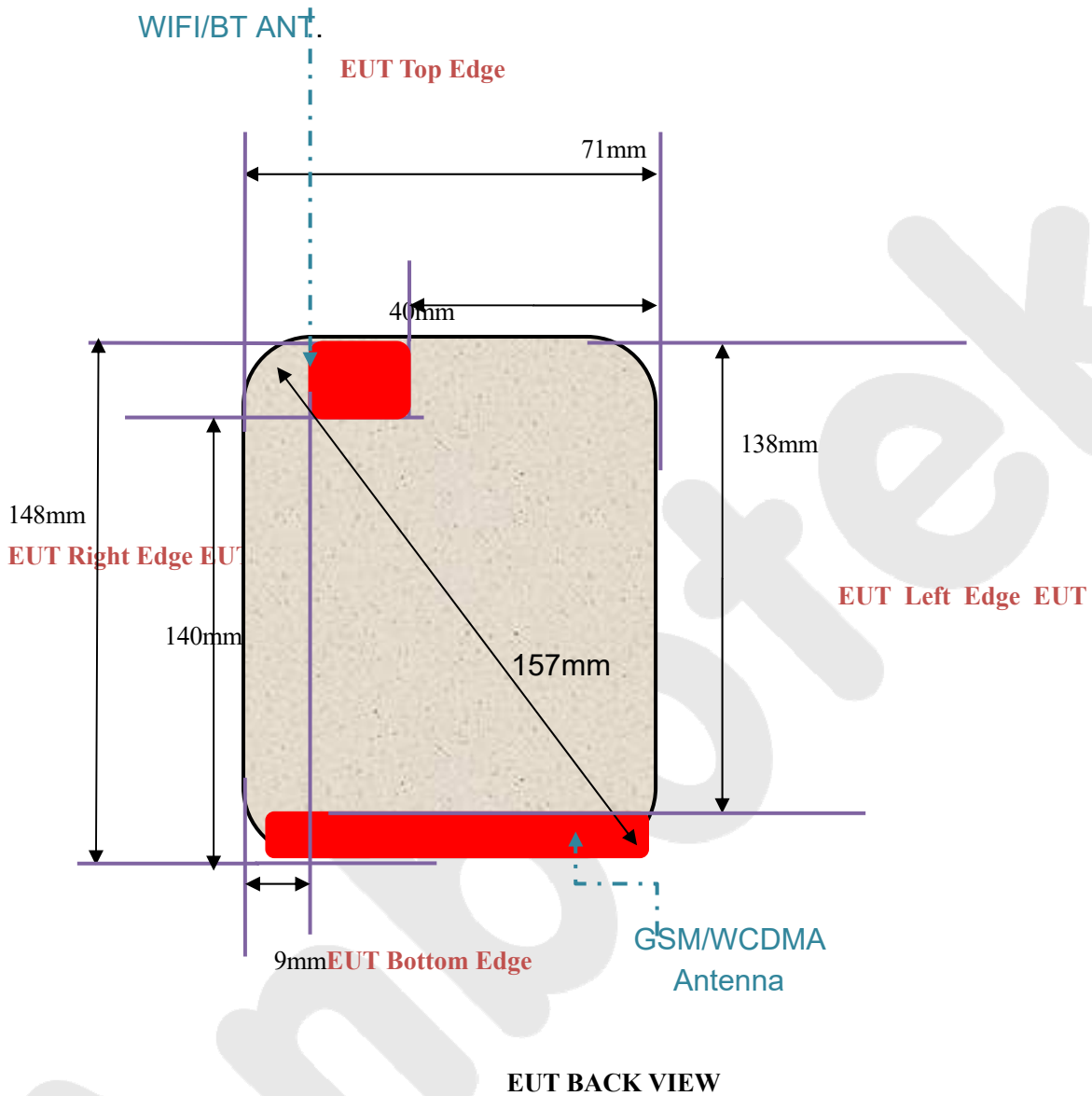
Power and distance are rounded to the nearest mW and mm before calculation

The result is rounded to one decimal place for comparison

Bluetooth Max Power (dBm)	Separation Distance (mm)	Frequency (GHz)	exclusion thresholds
5.0	5	2.44	0.987

Per KDB 447498 D01, when the minimum test separation distance is < 5 mm, a distance of 5 mm is applied to determine SAR test exclusion. The test exclusion threshold is 0.624 which is ≤ 3, SAR testing is not required.

11. Antenna Location



Distance of The Antenna to the EUT surface and edge						
Antennas	Front	Back	Top Side	Bottom Side	Left Side	Right Side
WWAN	<25mm	<25mm	>25mm	<25mm	<25mm	<25mm
BT&WLAN	<25mm	<25mm	<25mm	>25mm	>25mm	<25mm

Positions for SAR tests; Hotspot mode						
Antennas	Front	Back	Top Side	Bottom Side	Left Side	Right Side
WWAN	Yes	Yes	No	Yes	Yes	Yes
BT&WLAN	Yes	Yes	Yes	No	No	Yes

General Note: Referring to KDB 941225 D06, When the overall device length and width are $\geq 9\text{cm} \times 5\text{cm}$, the test distance is 10mm, SAR must be measured for all sides and surfaces with a transmitting antenna located with 25mm from that surface or edge.

Anbotek

12.SAR Test Results Summary

General Note:

13. Per KDB 447498 D01v05r01, the reported SAR is the measured SAR value adjusted for maximum tune-up tolerance.

Scaling Factor = tune-up limit power (mW) / EUT RF power (mW), where tune-up limit is the maximum rated power among all production units.

Reported SAR(W/kg)= Measured SAR(W/kg) Scaling Factor*

14. Per KDB 447498 D01v05r01, for each exposure position, if the highest output channel reported SAR≤0.8W/kg, other channels SAR testing are not necessary
15. Per KDB 941225 D05, start with the largest channel bandwidth and measure SAR for QPSK with 1 RB allocation, using the RB offset and required test channel combination with the highest maximum output power for RB offsets at the upper edge, middle and lower edge of each required test channel.
16. Per KDB 941225 D05, 50% RB allocation for QPSK SAR testing follows 1RB QPSK allocation procedure.
17. Per KDB 941225 D05, For QPSK with 100% RB allocation, SAR is not required when the highest maximum output power for 100 % RB allocation is less than the highest maximum output power in 50% and 1 RB allocations and the highest reported SAR for 1 RB and 50% RB allocation are ≤ 0.8 W/kg. Otherwise, SAR is measured for the highest output power channel; and if the reported SAR is > 1.45 W/kg, the remaining required test channels must also be tested.
18. Per KDB 941225 D05, 16QAM output power for each RB allocation configuration is > not ½ dB higher than the same configuration in QPSK and the reported SAR for the QPSK configuration is ≤ 1.45 W/kg; Per KDB 941225 D05, 16QAM SAR testing is not required.
19. Per KDB 941225 D05, Smaller bandwidth output power for each RB allocation configuration is > not ½ dB higher than the same configuration in the largest supported bandwidth, and the reported SAR for the largest supported bandwidth is ≤ 1.45 W/kg; Per KDB 941225 D05, smaller bandwidth SAR testing is not required.
20. Per KDB865664 D01, for each frequency band, **repeated SAR measurement is required** only when the measured SAR is ≥0.8W/Kg; if the deviation among the repeated measurement is ≤20%,and the measured SAR <1.45W/Kg, only one repeated measurement is required.

20.1. Head SAR Results

<GSM>

Plot No.	Band	Mode	Test Position	Ch.	Freq. (MHz)	Average Power (dBm)	Tune-Up Limit (dBm)	Scaling Factor	Power Drift (dB)	Measured SAR _{1g} (W/kg)	Reported SAR _{1g} (W/kg)
#1	GSM850	GSM Voice	Right Cheek	190	836.6	30.51	30.6	1.003	0.06	0.278	0.279
	GSM850	GSM Voice	Right Tilted	190	836.6	30.51	30.6	1.003	-0.08	0.152	0.152
	GSM850	GSM Voice	Left Cheek	190	836.6	30.51	30.6	1.003	0.14	0.261	0.262
	GSM850	GSM Voice	Left Tilted	190	836.6	30.51	30.6	1.003	0.12	0.145	0.145
#2	GSM1900	GSM Voice	Right Cheek	661	1880.0	30.40	30.5	1.003	-0.13	0.356	0.357
	GSM1900	GSM Voice	Right Tilted	661	1880.0	30.40	30.5	1.003	-0.08	0.214	0.215
	GSM1900	GSM Voice	Left Cheek	661	1880.0	30.40	30.5	1.003	-0.15	0.326	0.327
	GSM1900	GSM Voice	Left Tilted	661	1880.0	30.40	30.5	1.003	0.10	0.208	0.209

<WCDMA>

Plot No.	Band	Mode	Test Position	Ch.	Freq. (MHz)	Average Power (dBm)	Tune-Up Limit (dBm)	Scaling Factor	Power Drift (dB)	Measured SAR _{1g} (W/kg)	Reported SAR _{1g} (W/kg)
#3	WCDMA Band II	RMC 12.2K	Right Cheek	9400	1880.0	22.68	22.7	1.001	-0.10	0.255	0.255
	WCDMA Band II	RMC 12.2K	Right Tilted	9400	1880.0	22.68	22.7	1.001	-0.12	0.163	0.163
	WCDMA Band II	RMC 12.2K	Left Cheek	9400	1880.0	22.68	22.7	1.001	-0.10	0.228	0.228
	WCDMA Band II	RMC 12.2K	Left Tilted	9400	1880.0	22.68	22.7	1.001	-0.08	0.158	0.158
#4	WCDMA Band V	RMC 12.2K	Right Cheek	4233	846.6	22.62	22.7	1.004	0.09	0.487	0.489
	WCDMA Band V	RMC 12.2K	Right Tilted	4233	846.6	22.62	22.7	1.004	-0.12	0.203	0.204
	WCDMA Band V	RMC 12.2K	Left Cheek	4233	846.6	22.62	22.7	1.004	-0.10	0.389	0.390
	WCDMA Band V	RMC 12.2K	Left Tilted	4233	846.6	22.62	22.7	1.004	0.08	0.198	0.199

<LTE>

Plot No.	Band	Mode	Test Position	Ch.	Freq. (MHz)	Average Power (dBm)	Tune-Up Limit (dBm)	Scaling Factor	Power Drift (dB)	Measured SAR _{1g} (W/kg)	Reported SAR _{1g} (W/kg)
#5	LTE Band 5	10MHz/1RB	Right Cheek	20600	844.0	23.74	24.0	1.011	-0.16	0.667	0.674
	LTE Band 5	10MHz/50RB	Right Cheek	20600	844.0	23.74	24.0	1.011	0.07	0.574	0.580
	LTE Band 5	10MHz/1RB	Right Tilted	20600	844.0	23.74	24.0	1.011	-0.08	0.356	0.360
	LTE Band 5	10MHz/50RB	Right Tilted	20600	844.0	23.74	24.0	1.011	0.09	0.325	0.329
	LTE Band 5	10MHz/1RB	Left Cheek	20600	844.0	23.74	24.0	1.011	0.06	0.569	0.575
	LTE Band 5	10MHz/50RB	Left Cheek	20600	844.0	23.74	24.0	1.011	0.07	0.492	0.497
	LTE Band 5	10MHz/1RB	Left Tilted	20600	844.0	23.74	24.0	1.011	0.08	0.347	0.351
	LTE Band 5	10MHz/50RB	Left Tilted	20600	844.0	23.74	24.0	1.011	-0.09	0.310	0.313
#6	LTE Band 41	20MHz/1RB	Right Cheek	40340	2570	24.18	24.2	1.001	-0.06	0.274	0.274
	LTE Band 41	20MHz/50RB	Right Cheek	40340	2570	24.18	24.2	1.001	0.09	0.248	0.248
	LTE Band 41	20MHz/1RB	Right Tilted	40340	2570	24.18	24.2	1.001	-0.10	0.186	0.186
	LTE Band 41	20MHz/50RB	Right Tilted	40340	2570	24.18	24.2	1.001	-0.09	0.158	0.158
	LTE Band 41	20MHz/1RB	Left Cheek	40340	2570	24.18	24.2	1.001	0.16	0.258	0.258
	LTE Band 41	20MHz/50RB	Left Cheek	40340	2570	24.18	24.2	1.001	0.13	0.212	0.212
	LTE Band 41	20MHz/1RB	Left Tilted	40340	2570	24.18	24.2	1.001	0.09	0.164	0.164
	LTE Band 41	20MHz/50RB	Left Tilted	40340	2570	24.18	24.2	1.001	0.12	0.157	0.157
#15	LTE Band 38	20MHz/1RB	Right Cheek	37850	2580	23.91	24.0	1.000	-0.08	0.247	0.247
	LTE Band 38	20MHz/50RB	Right Cheek	37850	2580	23.91	24.0	1.000	0.09	0.218	0.218
	LTE Band 38	20MHz/1RB	Right Tilted	37850	2580	23.91	24.0	1.000	-0.12	0.175	0.175
	LTE Band 38	20MHz/50RB	Right Tilted	37850	2580	23.91	24.0	1.000	-0.05	0.150	0.150
	LTE Band 38	20MHz/1RB	Left Cheek	37850	2580	23.91	24.0	1.000	0.13	0.240	0.240
	LTE Band 38	20MHz/50RB	Left Cheek	37850	2580	23.91	24.0	1.000	0.16	0.200	0.200
	LTE Band 38	20MHz/1RB	Left Tilted	37850	2580	23.91	24.0	1.000	0.07	0.144	0.144
	LTE Band 38	20MHz/50RB	Left Tilted	37850	2580	23.91	24.0	1.000	0.10	0.135	0.135

<WIFI 2.4GHz>

Plot No.	Band	Mode	Test Position	Ch.	Freq. (MHz)	Average Power (dBm)	Tune-Up Limit (dBm)	Scaling Factor	Power Drift (dB)	Measured SAR _{1g} (W/kg)	Reported SAR _{1g} (W/kg)
#7	WIFI2.4GHz	802.11b	Right Cheek	1	2412	12.24	12.3	1.005	-0.06	0.248	0.249
	WIFI2.4GHz	802.11b	Right Tilted	1	2412	12.24	12.3	1.005	-0.06	0.147	0.148
	WIFI2.4GHz	802.11b	Left Cheek	1	2412	12.24	12.3	1.005	0.06	0.216	0.217
	WIFI2.4GHz	802.11b	Left Tilted	1	2412	12.24	12.3	1.005	0.11	0.136	0.137

20.2. Body SAR Results

<GSM>

Plot No.	Band	Mode	Test Position	Gap (cm)	Ch.	Freq. (MHz)	Average Power (dBm)	Tune-Up Limit (dBm)	Scaling Factor	Power Drift (dB)	Measured SAR _{1g} (W/kg)	Reported SAR _{1g} (W/kg)
	GSM850	GPRS(4 Tx slots)	Front	1	190	836.6	26.16	26.2	1.002	0.08	0.431	0.432
#8	GSM850	GPRS(4 Tx slots)	Back	1	190	836.6	26.16	26.2	1.002	-0.09	0.768	0.769
	GSM850	GPRS(4 Tx slots)	Left Side	1	190	836.6	26.16	26.2	1.002	0.08	0.362	0.363
	GSM850	GPRS(4 Tx slots)	Right Side	1	190	836.6	26.16	26.2	1.002	-0.09	0.287	0.287
	GSM850	GPRS(4 Tx slots)	Top Side	1	190	836.6	N/A	N/A	N/A	N/A	N/A	N/A
	GSM850	GPRS(4 Tx slots)	Bottom Side	1	190	836.6	26.16	26.2	1.002	0.10	0.305	0.305
	GSM1900	GPRS(4 Tx slots)	Front	1	661	1880.0	25.26	25.3	1.002	0.09	0.452	0.453
#9	GSM1900	GPRS(4 Tx slots)	Back	1	661	1880.0	25.26	25.3	1.002	0.12	0.687	0.688
	GSM1900	GPRS(4 Tx slots)	Left Side	1	661	1880.0	25.26	25.3	1.002	-0.08	0.359	0.360
	GSM1900	GPRS(4 Tx slots)	Right Side	1	661	1880.0	25.26	25.3	1.002	-0.07	0.321	0.322
	GSM1900	GPRS(4 Tx slots)	Top Side	1	661	1880.0	N/A	N/A	N/A	N/A	N/A	N/A
	GSM1900	GPRS(4 Tx slots)	Bottom Side	1	661	1880.0	25.26	25.3	1.002	0.09	0.232	0.232

<WCDMA>

Plot No.	Band	Mode	Test Position	Gap (cm)	Ch.	Freq. (MHz)	Average Power (dBm)	Tune-Up Limit (dBm)	Scaling Factor	Power Drift (dB)	Measured SAR _{1g} (W/kg)	Reported SAR _{1g} (W/kg)
	WCDMA Band II	RMC 12.2K	Front	1	9400	1880.0	22.68	22.7	1.001	0.12	0.368	0.368
#10	WCDMA Band II	RMC 12.2K	Back	1	9400	1880.0	22.68	22.7	1.001	0.14	0.545	0.545
	WCDMA Band II	RMC 12.2K	Left Side	1	9400	1880.0	22.68	22.7	1.001	-0.08	0.236	0.236
	WCDMA Band II	RMC 12.2K	Right Side	1	9400	1880.0	22.68	22.7	1.001	0.13	0.189	0.189
	WCDMA Band II	RMC 12.2K	Top Side	1	9400	1880.0	N/A	N/A	N/A	N/A	N/A	N/A
	WCDMA Band II	RMC 12.2K	Bottom Side	1	9400	1880.0	22.68	22.7	1.001	0.10	0.193	0.193
	WCDMA Band V	RMC 12.2K	Front	1	4233	846.6	22.62	22.7	1.004	0.11	0.406	0.407
#11	WCDMA Band V	RMC 12.2K	Back	1	4233	846.6	22.62	22.7	1.004	-0.12	0.655	0.657
	WCDMA Band V	RMC 12.2K	Left Side	1	4233	846.6	22.62	22.7	1.004	0.08	0.368	0.369
	WCDMA Band V	RMC 12.2K	Right Side	1	4233	846.6	22.62	22.7	1.004	0.12	0.233	0.234
	WCDMA Band V	RMC 12.2K	Top Side	1	4233	846.6	N/A	N/A	N/A	N/A	N/A	N/A
	WCDMA Band V	RMC 12.2K	Bottom Side	1	4233	846.6	22.62	22.7	1.004	-0.08	0.186	0.187

<LTE>

Plot No.	Band	Mode	Test Position	Gap (cm)	Ch.	Freq. (MHz)	Average Power (dBm)	Tune-Up Limit (dBm)	Scaling Factor	Power Drift (dB)	Measured SAR _{1g} (W/kg)	Reported SAR _{1g} (W/kg)
	LTE Band 5	10MHz/1RB	Front	1	20600	844.0	23.74	24.0	1.011	0.08	0.232	0.235
	LTE Band 5	10MHz/50RB	Front	1	20600	844.0	23.74	24.0	1.011	0.06	0.211	0.213
#12	LTE Band 5	10MHz/1RB	Back	1	20600	844.0	23.74	24.0	1.011	0.10	0.531	0.537
	LTE Band 5	10MHz/50RB	Back	1	20600	844.0	23.74	24.0	1.011	0.09	0.524	0.530
	LTE Band 5	10MHz/1RB	Left Side	1	20600	844.0	23.74	24.0	1.011	-0.13	0.196	0.198
	LTE Band 5	10MHz/50RB	Left Side	1	20600	844.0	23.74	24.0	1.011	0.10	0.175	0.177
	LTE Band 5	10MHz/1RB	Right Side	1	20600	844.0	23.74	24.0	1.011	0.08	0.145	0.147
	LTE Band 5	10MHz/50RB	Right Side	1	20600	844.0	23.74	24.0	1.011	0.09	0.136	0.235
	LTE Band 5	10MHz/1RB	Top Side	1	20600	844.0	N/A	N/A	N/A	N/A	N/A	N/A
	LTE Band 5	10MHz/50RB	Top Side	1	20600	844.0	N/A	N/A	N/A	N/A	N/A	N/A
	LTE Band 5	10MHz/1RB	Bottom Side	1	20600	844.0	23.74	24.0	1.011	0.06	0.136	0.137
	LTE Band 5	10MHz/50RB	Bottom Side	1	20600	844.0	23.74	24.0	1.011	0.12	0.120	0.121
	LTE Band 41	20MHz/1RB	Front	1	40340	2570	24.18	24.2	1.001	0.13	0.297	0.297
	LTE Band 41	20MHz/50RB	Front	1	40340	2570	24.18	24.2	1.001	0.05	0.261	0.261
#13	LTE Band 41	20MHz/1RB	Back	1	40340	2570	24.18	24.2	1.001	0.14	0.566	0.566
	LTE Band 41	20MHz/50RB	Back	1	40340	2570	24.18	24.2	1.001	0.08	0.521	0.521
	LTE Band 41	20MHz/1RB	Left Side	1	40340	2570	24.18	24.2	1.001	0.08	0.235	0.235
	LTE Band 41	20MHz/50RB	Left Side	1	40340	2570	24.18	24.2	1.001	0.05	0.214	0.214
	LTE Band 41	20MHz/1RB	Right Side	1	40340	2570	24.18	24.2	1.001	-0.11	0.189	0.189
	LTE Band 41	20MHz/50RB	Right Side	1	40340	2570	24.18	24.2	1.001	0.03	0.174	0.174
	LTE Band 41	20MHz/1RB	Top Side	1	40340	2570	N/A	N/A	N/A	N/A	N/A	N/A
	LTE Band 41	20MHz/50RB	Top Side	1	40340	2570	N/A	N/A	N/A	N/A	N/A	N/A
	LTE Band 41	20MHz/1RB	Bottom Side	1	40340	2570	24.18	24.2	1.001	-0.10	0.202	0.202
	LTE Band 41	20MHz/50RB	Bottom Side	1	40340	2570	24.18	24.2	1.001	0.09	0.188	0.188
	LTE Band 38	20MHz/1RB	Front	1	37850	2580	23.91	24.0	1.000	0.16	0.268	0.268
	LTE Band 38	20MHz/50RB	Front	1	37850	2580	23.91	24.0	1.000	0.08	0.255	0.255
#16	LTE Band 38	20MHz/1RB	Back	1	37850	2580	23.91	24.0	1.000	0.11	0.525	0.525
	LTE Band 38	20MHz/50RB	Back	1	37850	2580	23.91	24.0	1.000	0.07	0.501	0.501

	LTE Band 38	20MHz/1RB	Left Side	1	37850	2580	23.91	24.0	1.000	0.09	0.230	0.230
	LTE Band 38	20MHz/50RB	Left Side	1	37850	2580	23.91	24.0	1.000	0.08	0.200	0.200
	LTE Band 38	20MHz/1RB	Right Side	1	37850	2580	23.91	24.0	1.000	-0.15	0.184	0.184
	LTE Band 38	20MHz/50RB	Right Side	1	37850	2580	23.91	24.0	1.000	0.06	0.170	0.170
	LTE Band 38	20MHz/1RB	Top Side	1	37850	2580	N/A	N/A	N/A	N/A	N/A	N/A
	LTE Band 38	20MHz/50RB	Top Side	1	37850	2580	N/A	N/A	N/A	N/A	N/A	N/A
	LTE Band 38	20MHz/1RB	Bottom Side	1	37850	2580	23.91	24.0	1.000	-0.12	0.200	0.200
	LTE Band 38	20MHz/50RB	Bottom Side	1	37850	2580	23.91	24.0	1.000	0.06	0.181	0.181

<WIFI 2.4GHz>

Plot No.	Band	Mode	Test Position	Gap (cm)	Ch.	Freq. (MHz)	Average Power (dBm)	Tune-Up Limit (dBm)	Scaling Factor	Power Drift (dB)	Measured SAR _{1g} (W/kg)	Reported SAR _{1g} (W/kg)
	WIFI2.4GHz	802.11b	Front	1	1	2412	12.24	12.3	1.005	0.07	0.235	0.236
#14	WIFI2.4GHz	802.11b	Back	1	1	2412	12.24	12.3	1.005	0.08	0.274	0.275
	WIFI2.4GHz	802.11b	Left Side	1	1	2412	N/A	N/A	N/A	N/A	N/A	N/A
	WIFI2.4GHz	802.11b	Right Side	1	1	2412	12.24	12.3	1.005	0.09	0.175	0.176
	WIFI2.4GHz	802.11b	Top Side	1	1	2412	12.24	12.3	1.005	0.16	0.203	0.204
	WIFI2.4GHz	802.11b	Bottom Side	1	1	2412	N/A	N/A	N/A	N/A	N/A	N/A

21. Simultaneous Transmission Analysis

Simultaneous TX SAR Considerations

No.	Applicable Simultaneous Transmission
1.	GSM+WIFI 2.4G
2.	WCDMA+WIFI 2.4G
3.	LTE+WIFI2.4G
4.	GSM+BT
5.	WCDMA+BT
6.	LTE+BT

Note:

1. WIFI 2.4GHz and Bluetooth share the same antenna, and can not transmit simultaneously.
2. EUT will choose either GSM/WCDMA/LTE according to the network signal condition; therefore, GSM/WCDMA/LTE cannot transmit simultaneously.
3. Bluetooth stand-alone SAR tests are not required and are considered zero in the SAR summation.

Evaluation of Simultaneous SAR

<GSM>

Test Position	WiFi SAR _{1-g} (W/Kg)	GSM 850 _{1-g} (W/Kg)	PCS 1900 _{1-g} (W/Kg)	MAX. ΣSAR _{1-g} (W/Kg)	SAR _{1-g} Limit (W/Kg)	Simut. Meas. Required
Right Cheek	0.249	0.279	0.357	0.606	1.6	N/A
Right Tilted	0.148	0.152	0.215	0.363	1.6	N/A
Left Cheek	0.217	0.262	0.327	0.544	1.6	N/A
Left Tilted	0.137	0.145	0.209	0.346	1.6	N/A
Front	0.236	0.252	0.453	0.689	1.6	N/A
Back	0.275	0.769	0.688	1.044	1.6	N/A
Left Side	N/A	0.363	0.360	N/A	1.6	N/A
Right Side	0.176	0.287	0.322	0.498	1.6	N/A
Top side	0.204	N/A	N/A	N/A	1.6	N/A
Bottom Side	N/A	0.305	0.232	N/A	1.6	N/A

<WCDMA>

Test Position	WiFi SAR _{1-g} (W/Kg)	WCDMA Band 2 _{1-g} (W/Kg)	WCDMA Band 5 _{1-g} (W/Kg)	MAX. ΣSAR _{1-g} (W/Kg)	SAR _{1-g} Limit (W/Kg)	Simut. Meas. Required
Right Cheek	0.249	0.255	0.489	0.738	1.6	N/A
Right Tilted	0.148	0.163	0.204	0.352	1.6	N/A
Left Cheek	0.217	0.232	0.390	0.607	1.6	N/A
Left Tilted	0.137	0.158	0.199	0.336	1.6	N/A
Front	0.236	0.368	0.407	0.643	1.6	N/A
Back	0.275	0.545	0.657	0.932	1.6	N/A
Left Side	N/A	0.236	0.369	N/A	1.6	N/A
Right Side	0.176	0.189	0.234	0.410	1.6	N/A
Top side	0.204	N/A	N/A	N/A	1.6	N/A
Bottom Side	N/A	0.193	0.187	N/A	1.6	N/A

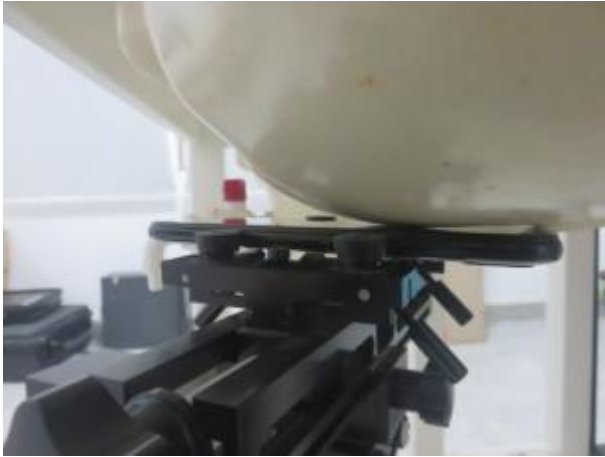
<LTE>

Test Position	WiFi SAR _{1-g} (W/Kg)	LTE BAND 5SAR _{1-g} (W/Kg)	LTE BAND 38 SAR _{1-g} (W/Kg)	LTE BAND 41SAR _{1-g} (W/Kg)	MAX. ΣSAR _{1-g} (W/Kg)	SAR _{1-g} Limit (W/Kg)	Simut. Meas. Required
Right Cheek	0.249	0.674	0.247	0.274	0.923	1.6	N/A
Right Tilted	0.148	0.360	0.175	0.186	0.508	1.6	N/A
Left Cheek	0.217	0.575	0.24	0.258	0.792	1.6	N/A
Left Tilted	0.137	0.351	0.144	0.164	0.488	1.6	N/A
Front	0.236	0.235	0.268	0.297	0.533	1.6	N/A
Back	0.275	0.537	0.525	0.566	0.841	1.6	N/A
Left Side	N/A	0.198	0.23	0.235	N/A	1.6	N/A
Right Side	0.176	0.147	0.184	0.189	0.365	1.6	N/A
Top side	0.204	N/A	N/A	N/A	N/A	1.6	N/A
Bottom Side	N/A	0.137	0.2	0.202	N/A	1.6	N/A

22. Measurement Uncertainty

Per KDB 865664 D01 SAR Measurement 100 MHz to 6 GHz, when the highest measured 1-g SAR within a frequency band is < 1.5 W/Kg, the extensive SAR measurement uncertainty analysis is not required in SAR reports submitted for equipment approval.

Appendix A. EUT Photos and Test Setup Photos



Right Check



Right Tilt 15°



Left Check



Left Tilt 15°



Front with Phantom 10 mm



Back with Phantom 10 mm



Bottom (10mm)



Top(10mm)



Left(10mm)



Right(10mm)

Appendix B. Plots of SAR System Check

System Performance Check at 835 MHz Head

DUT: Dipole 835 MHz; Type: D835V2; Serial: 4d154

Date:2019-10-12

Communication System: CW; Frequency: 835 MHz;Duty Cycle: 1:1

Medium parameters used (interpolated): $f = 835$ MHz; $\sigma = 0.94$ S/m; $\epsilon_r = 41.68$; $\rho = 1000$ kg/m³

Phantom section: Flat Section

DASY5 Configuration:

- Probe: EX3DV4 - SN7396; ConvF(9.71, 9.71, 9.71); Calibrated: 05,06.2019;
- Sensor-Surface: 4mm (Mechanical Surface Detection)
- Electronics: DAE4 Sn387; Calibrated: 06.09.2018
- Phantom: SAM 1; Type: SAM;
- Measurement SW: DASY52, Version 52.8 (7); SEMCAD X Version 14.6.10 (7164)

Area Scan (61x91x1):Measurement grid: dx=15.00 mm, dy=15.00 mm

Maximum value of SAR (interpolated) = 2.812 mW/g

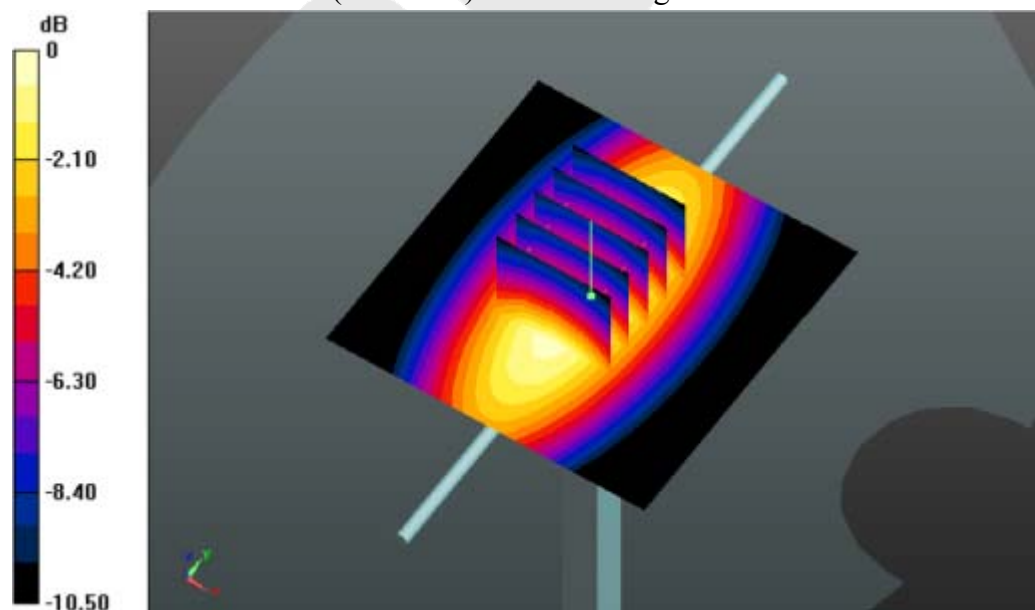
Zoom Scan (5x5x7)/Cube 0: Measurement grid: dx=7mm, dy=7mm, dz=5mm

Reference Value = 49.842 V/m; Power Drift = -0.03 dB

Peak SAR (extrapolated) = 3.235W/kg

SAR(1 g) = 2.28 mW/g; SAR(10 g) = 1.56 mW/g

Maximum value of SAR (measured) = 2.854 mW/g



System Performance Check 835MHz Head 250mW

System Performance Check at 835 MHz Body

DUT: Dipole 835 MHz; Type: D835V2; Serial: 4d154

Date:2019-10-12

Communication System: CW; Frequency: 835 MHz;Duty Cycle: 1:1

Medium parameters used (interpolated): $f = 835 \text{ MHz}$; $\sigma = 0.95 \text{ S/m}$; $\epsilon_r = 55.00$; $\rho = 1000 \text{ kg/m}^3$

Phantom section: Flat Section

DASY5 Configuration:

- Probe: EX3DV4 - SN7396; ConvF(9.88, 9.88, 9.88); Calibrated: 05,06.2019;
- Sensor-Surface: 4mm (Mechanical Surface Detection)
- Electronics: DAE4 Sn387; Calibrated: 06.09.2018
- Phantom: SAM 1; Type: SAM;
- Measurement SW: DASY52, Version 52.8 (2); SEMCAD X Version 14.6.10 (7164)

Area Scan (61x91x1):Measurement grid: dx=15.00 mm, dy=15.00 mm

Maximum value of SAR (interpolated) = 2.865 mW/g

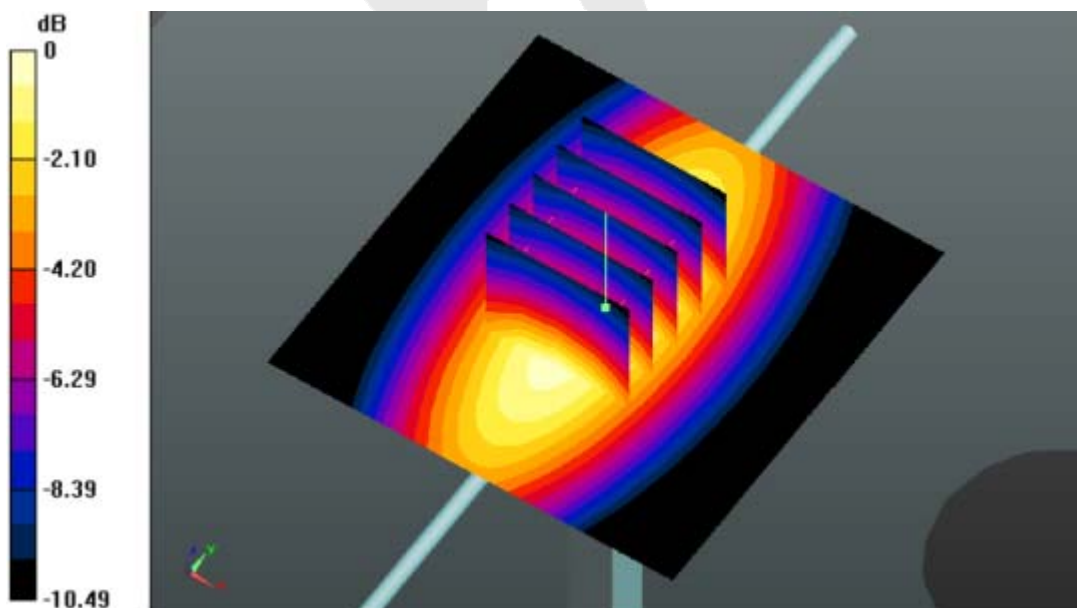
Zoom Scan (5x5x7)/Cube 0: Measurement grid: dx=8mm, dy=8mm, dz=5mm

Reference Value = 50.236 V/m; Power Drift = -0.05 dB

Peak SAR (extrapolated) = 3.354 W/kg

SAR(1 g) = 2.41 mW/g; SAR(10 g) = 1.56 mW/g

Maximum value of SAR (measured) = 2.858 mW/g



System Performance Check 835MHz Body 250mW

System Performance Check at 1900 MHz Head

DUT: Dipole 1900 MHz; Type: D1900V2; Serial: 5d175

Date:2019-10-14

Communication System: CW; Frequency: 1900 MHz;Duty Cycle: 1:1

Medium parameters used (interpolated): $f = 1900$ MHz; $\sigma = 1.43$ S/m; $\epsilon_r = 40.14$; $\rho = 1000$ kg/m³

Phantom section: Flat Section

DASY5 Configuration:

Probe:EX3DV4 - SN7396; ConvF(8.13, 8.13, 8.13); Calibrated: 05,06.2019;

Sensor-Surface: 3mm (Mechanical Surface Detection)

Electronics: DAE4 Sn387; Calibrated: 06.09.2018

Phantom: SAM 1; Type: SAM;

Measurement SW: DASY52, Version 52.8 (1); SEMCAD X Version 14.6.5 (6469)

Area Scan (61x91x1):Measurement grid: dx=15.00 mm, dy=15.00 mm

Maximum value of SAR (interpolated) = 10.53 W/kg

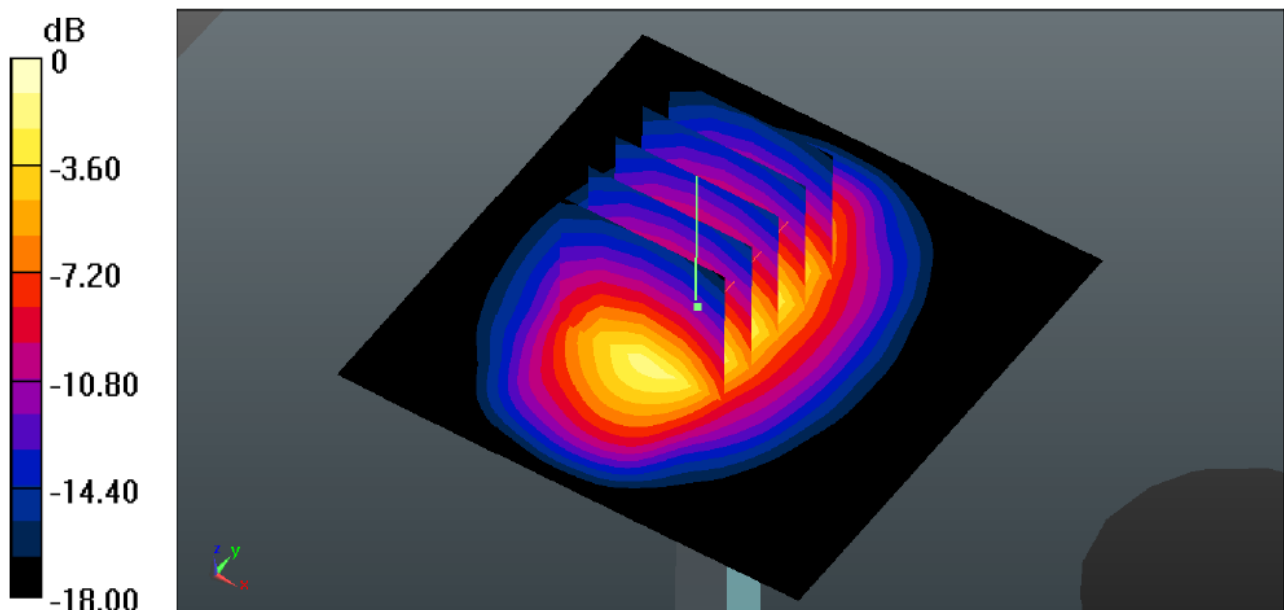
Zoom Scan (5x5x7)/Cube 0: Measurement grid: dx=7mm, dy=7mm, dz=5mm

Reference Value = 94.48 V/m; Power Drift = -0.08 dB

Peak SAR (extrapolated) = 12.26 W/kg

SAR(1 g) = 9.76 W/kg; SAR(10 g) = 4.95 W/kg

Maximum value of SAR (measured) = 12.56 W/kg



System Performance Check 1900MHz Head 250mW

System Performance Check at 1900 MHz Body

DUT: Dipole 1900 MHz; Type: D1900V2; Serial: 5d175

Date:2019-10-14

Communication System: CW; Frequency: 1900 MHz;Duty Cycle: 1:1

Medium parameters used (interpolated): $f = 1900$ MHz; $\sigma = 1.55$ S/m; $\epsilon_r = 53.01$; $\rho = 1000$ kg/m³

Phantom section: Flat Section

DASY5 Configuration:

Probe: EX3DV4 - SN7396; ConvF(7.97, 7.97, 7.97); Calibrated: 05.06.2019;

Sensor-Surface: 3mm (Mechanical Surface Detection)

Electronics: DAE4 Sn387; Calibrated: 06.09.2018

Phantom: SAM 1; Type: SAM;

Measurement SW: DASY52, Version 52.8 (1); SEMCAD X Version 14.6.5 (6469)

Area Scan (61x91x1):Measurement grid: dx=15.00 mm, dy=15.00 mm

Maximum value of SAR (interpolated) = 15.148 mW/g

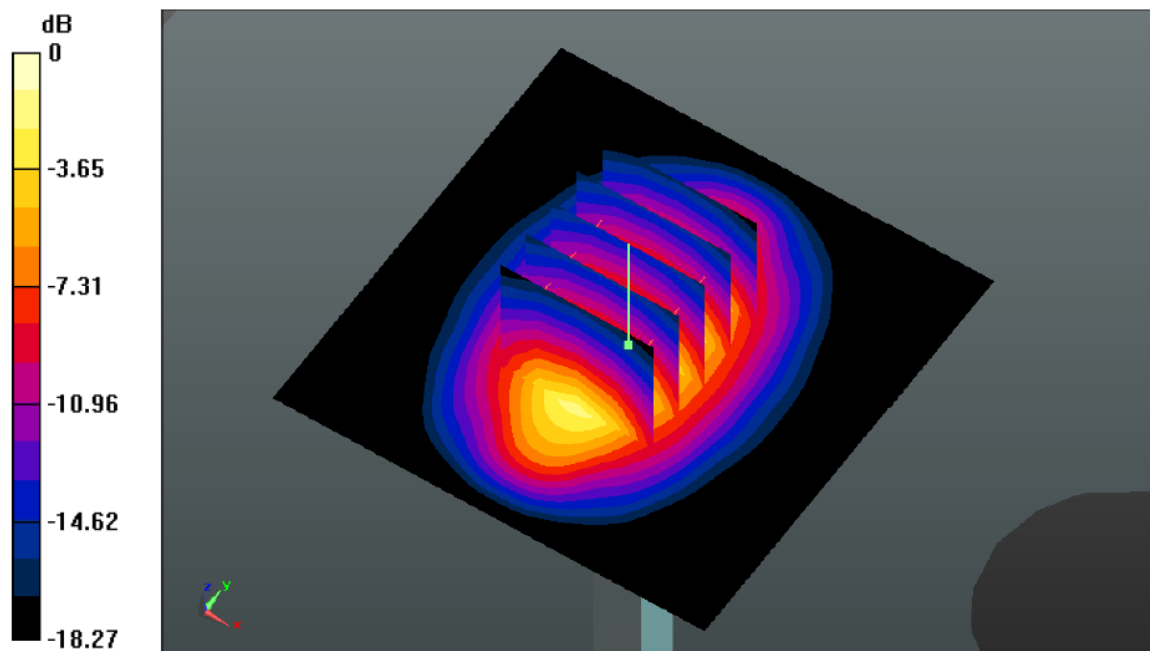
Zoom Scan (5x5x7)/Cube 0: Measurement grid: dx=8mm, dy=8mm, dz=5mm

Reference Value = 87.632 V/m; Power Drift = -0.12dB

Peak SAR (extrapolated) = 19.056 W/kg

SAR(1 g) = 10.26 mW/g; SAR(10 g) = 5.32 mW/g

Maximum value of SAR (measured) = 15.11 mW/g



System Performance Check 1900MHz Body250mW

System Performance Check at 2450 MHz Head

DUT: Dipole 2450 MHz; Type: D2450V2; Serial: 910

Date:2019-10-15

Communication System: CW; Frequency: 2450 MHz;Duty Cycle: 1:1

Medium parameters used (interpolated): $f = 2450$ MHz; $\sigma = 1.76$ S/m; $\epsilon_r = 39.06$; $\rho = 1000$ kg/m³

Phantom section: Flat Section

DASY5 Configuration:

Probe: EX3DV4 - SN7396; ConvF(7.57, 7.57, 7.57); Calibrated: 05.06.2019;

Sensor-Surface: 3mm (Mechanical Surface Detection)

Electronics: DAE4 Sn387; Calibrated: 06.09.2018

Phantom: SAM 1; Type: SAM;

Measurement SW: DASY52, Version 52.8 (1); SEMCAD X Version 14.6.5 (6469)

Area Scan (61x91x1):Measurement grid: dx=10.00 mm, dy=10.00 mm

Maximum value of SAR (interpolated) = 19.128 mW/g

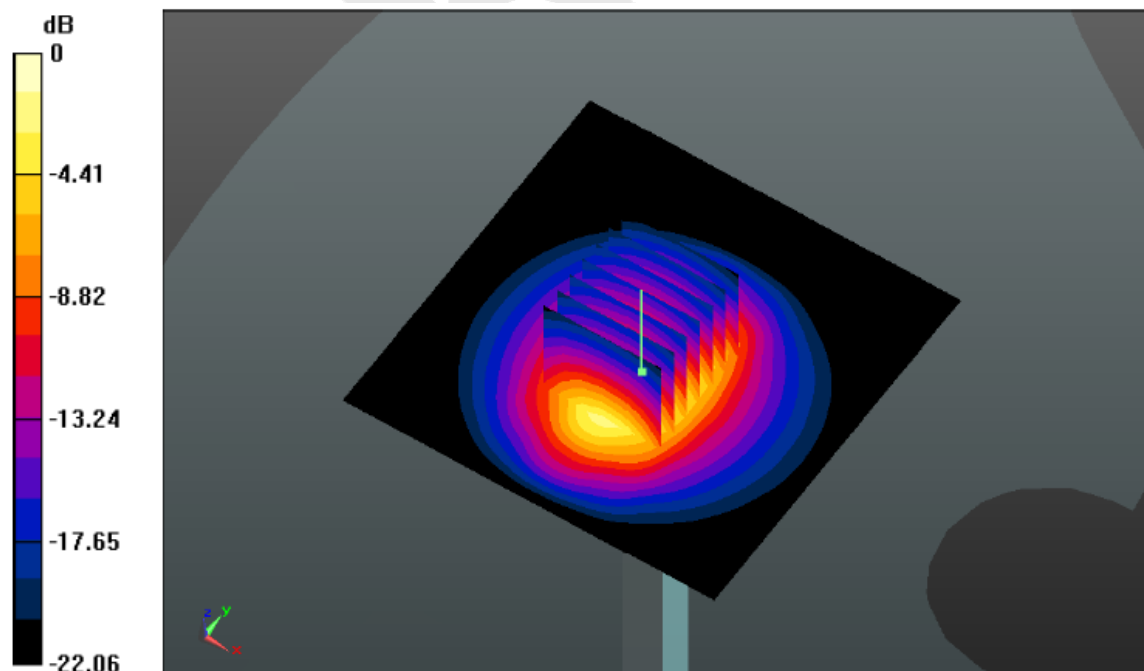
Zoom Scan (7x7x7)/Cube 0: Measurement grid: dx=5mm, dy=5mm, dz=5mm

Reference Value = 84.654 V/m; Power Drift = 0.08 dB

Peak SAR (extrapolated) = 25.412 W/kg

SAR(1 g) = 12.58 mW/g; SAR(10 g) = 5.76 mW/g

Maximum value of SAR (measured) = 18.871 mW/g



System Performance Check 2450MHz Head250mW

System Performance Check at 2450 MHz Body

Date:2019-10-15

DUT: Dipole 2450 MHz; Type: D2450V2; Serial: 910

Communication System: CW; Frequency: 2450 MHz;Duty Cycle: 1:1

Medium parameters used (interpolated): $f = 2450$ MHz; $\sigma = 1.93$ S/m; $\epsilon_r = 52.12$; $\rho = 1000$ kg/m³

Phantom section: Flat Section

DASY5 Configuration:

Probe: EX3DV4 - SN7396; ConvF(7.53, 7.53, 7.53); Calibrated: 05.06.2019;

Sensor-Surface: 3mm (Mechanical Surface Detection)

Electronics: DAE4 Sn387; Calibrated: 06.09.2018

Phantom: SAM 1; Type: SAM;

Measurement SW: DASY52, Version 52.8 (1); SEMCAD X Version 14.6.5 (6469)

Area Scan (61x91x1):Measurement grid: dx=10.00 mm, dy=10.00 mm

Maximum value of SAR (interpolated) = 19.225 mW/g

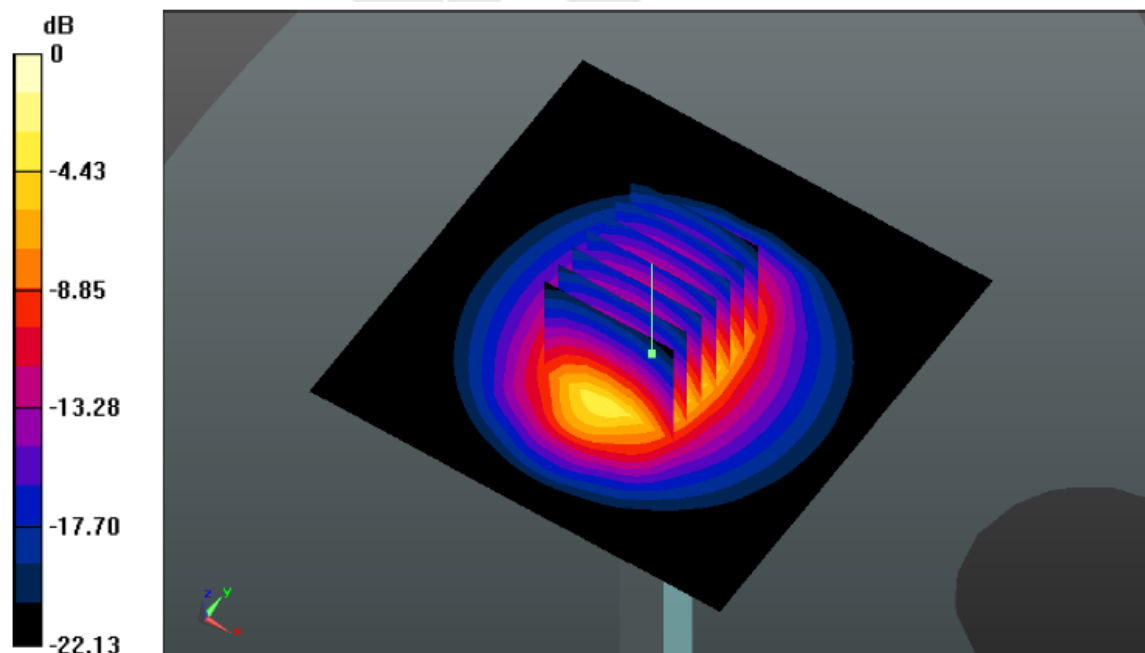
Zoom Scan (7x7x7)/Cube 0: Measurement grid: dx=5mm, dy=5mm, dz=5mm

Reference Value = 84.153 V/m; Power Drift = 0.05dB

Peak SAR (extrapolated) = 26.125 W/kg

SAR(1 g) = 12.74 mW/g; SAR(10 g) = 5.69 mW/g

Maximum value of SAR (measured) = 19.18mW/g



System Performance Check 2450MHz Body250mW

2600MHz Head System Check at Head

DUT: Dipole 2600 MHz; Type: D2600V2;

Communication System: CW; Frequency: 2600 MHz; Duty Cycle: 1:1

Medium parameters used (interpolated): $f = 2600$ MHz; $\sigma = 1.93$ S/m; $\epsilon_r = 38.0$; $\rho = 1000$ kg/m³

Phantom section: Flat Section

DASY5 Configuration:

- Probe: EX3DV4 – SN7396; ConvF(7.38, 7.38, 7.38); Calibrated: 05,06.2019;
- Sensor-Surface: 2mm (Mechanical Surface Detection)
- Electronics: DAE4 Sn387; Calibrated: 06.09.2018
- Phantom: SAM; Type: QD000P40CD; Serial: TP:1670
- Measurement SW: DASY52, Version 52.8 (2); SEMCAD X Version 14.6.10 (7164)

Configuration/Pin=250mW/Area Scan (81x81x1): Interpolated grid: dx=1.200 mm, dy=1.200 mm

Maximum value of SAR (interpolated) = 24.8 W/kg

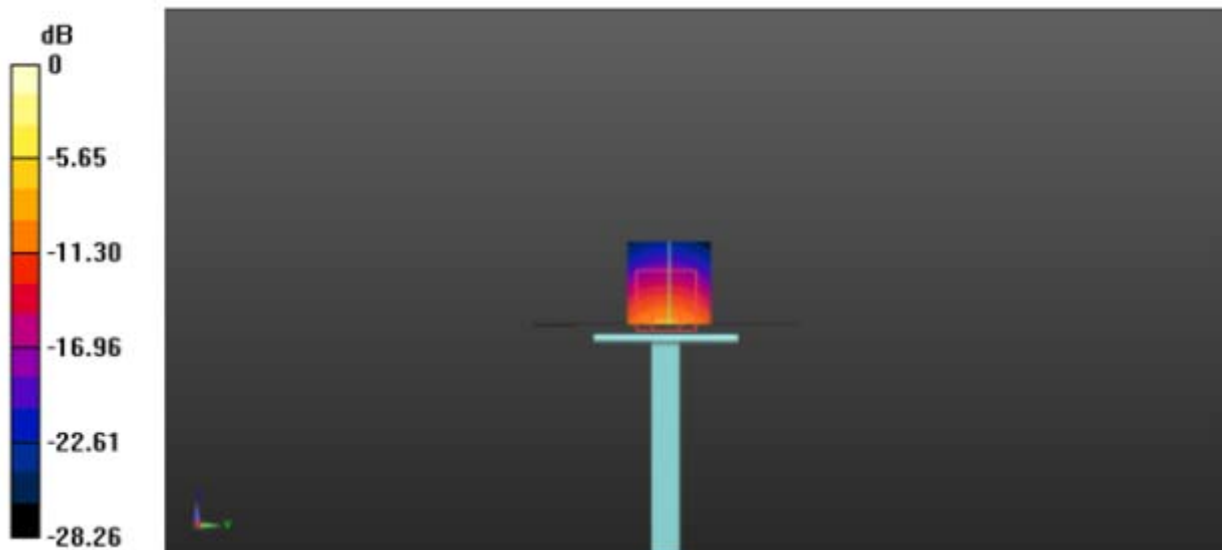
Configuration/Pin=250mW/Zoom Scan (7x7x7)/Cube 0: Measurement grid: dx=5mm, dy=5mm, dz=5mm

Reference Value = 110.2 V/m; Power Drift = 0.09 dB

Peak SAR (extrapolated) = 33.1 W/kg

SAR(1 g) = 14.1 W/kg; SAR(10 g) = 6.52 W/kg

Maximum value of SAR (measured) = 25.6 W/kg



2600MHz Head System Check at Body

DUT: Dipole 2600 MHz; Type: D2600V2;

Communication System: CW; Frequency: 2600 MHz; Duty Cycle: 1:1

Medium parameters used (interpolated): $f = 2600$ MHz; $\sigma = 2.1$ S/m; $\epsilon_r = 52.0$; $\rho = 1000$ kg/m³

Phantom section: Flat Section

DASY5 Configuration:

- Probe: EX3DV4 – SN7396; ConvF(7.38, 7.38, 7.38); Calibrated: 05,06.2019;
- Sensor-Surface: 2mm (Mechanical Surface Detection)
- Electronics: DAE4 Sn387; Calibrated: 06.09.2018
- Phantom: SAM; Type: QD000P40CD; Serial: TP:1670
- Measurement SW: DASY52, Version 52.8 (2); SEMCAD X Version 14.6.10 (7164)

Configuration/Pin=250mW/Area Scan (81x81x1): Interpolated grid: dx=1.200 mm, dy=1.200 mm

Maximum value of SAR (interpolated) = 24.8 W/kg

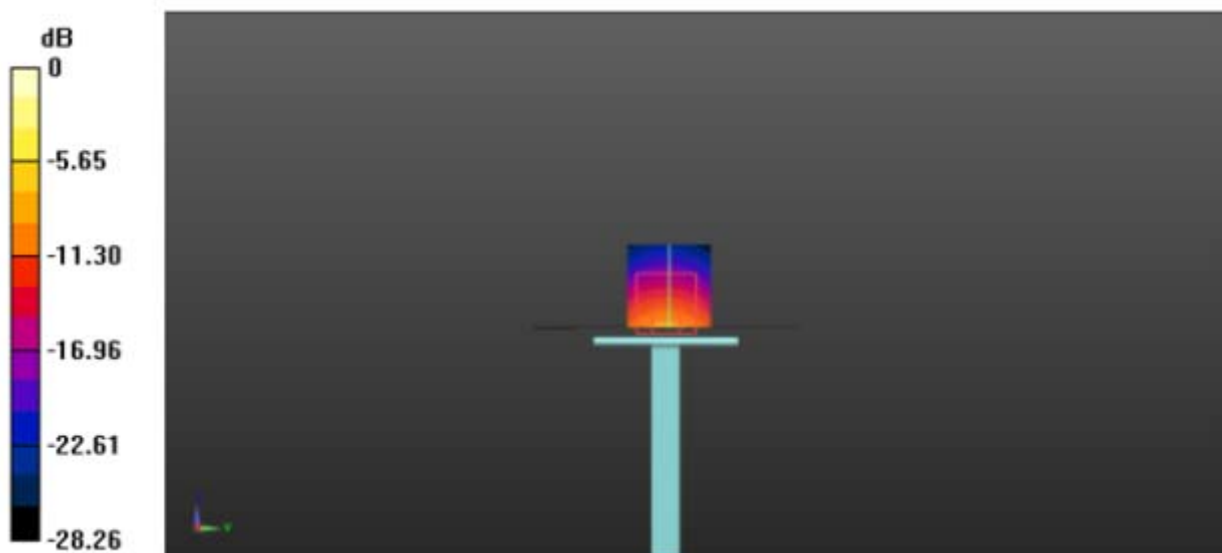
Configuration/Pin=250mW/Zoom Scan (7x7x7)/Cube 0: Measurement grid: dx=5mm, dy=5mm, dz=5mm

Reference Value = 110.2 V/m; Power Drift = 0.09 dB

Peak SAR (extrapolated) = 33.1 W/kg

SAR(1 g) = 13.8 W/kg; SAR(10 g) = 6.47 W/kg

Maximum value of SAR (measured) = 25.6 W/kg



Appendix C. Plots of SAR Test Data

#1Date: 2019-10-12

GSM850_GSM Voice_Right Cheek_Ch190

Communication System: UID 0, Generic GSM (0); Frequency: 836.6 MHz;Duty Cycle: 1:1.99986

Medium parameters used (interpolated): $f = 836.6$ MHz; $\sigma = 1.06$ S/m; $\epsilon_r = 55.57$; $\rho = 1000$ kg/m³

Phantom section: Flat Section

DASY5 Configuration:

- Probe: EX3DV4 - SN7396; ConvF(9.71, 9.71, 9.71); Calibrated: 05,06.2019;
- Sensor-Surface: 4mm (Mechanical Surface Detection)
- Electronics: DAE4 Sn387; Calibrated: 06.09.2018
- Phantom: SAM 1; Type: SAM;
- Measurement SW: DASY52, Version 52.8 (2); SEMCAD X Version 14.6.10 (7164)

Right HEAD/L-C/Area Scan (7x11x1): Measurement grid: dx=15mm, dy=15mm

Maximum value of SAR (measured) = 0.323 W/kg

Right HEAD/L-C/Zoom Scan (5x5x7)/Cube 0: Measurement grid: dx=8mm, dy=8mm, dz=5mm

Reference Value = 6.25 V/m; Power Drift = 0.06 dB

Peak SAR (extrapolated) = 0.325 W/kg

SAR(1 g) = 0.287 W/kg; SAR(10 g) = 0.193 W/kg

Maximum value of SAR (measured) = 0.312 W/kg



#2 Date: 2019-10-14

GSM1900_GSM Voice_Right Cheek_Ch661

Communication System: UID 0, Generic GSM (0); Frequency: 1880 MHz; Duty Cycle: 1:1.99986

Medium parameters used: $f = 1880$ MHz; $\sigma = 1.54$ S/m; $\epsilon_r = 53.28$; $\rho = 1000$ kg/m³

Phantom section: Left Section

DASY5 Configuration:

- Probe: EX3DV4 - SN7396; ConvF(8.13, 8.13, 8.13); Calibrated: 05,06.2019;
- Sensor-Surface: 4mm (Mechanical Surface Detection)
- Electronics: DAE4 Sn387; Calibrated: 06.09.2018
- Phantom: SAM 1; Type: SAM;
 - Measurement SW: DASY52, Version 52.8 (2); SEMCAD X Version 14.6.10 (7164)

Right HEAD/L-C/Area Scan (7x11x1): Measurement grid: dx=15mm, dy=15mm

Maximum value of SAR (measured) = 0.358 W/kg

Right HEAD/L-C/Zoom Scan (5x5x7)/Cube 0: Measurement grid: dx=8mm, dy=8mm, dz=5mm

Reference Value = 12.58 V/m; Power Drift = -0.13 dB

Peak SAR (extrapolated) = 0.374 W/kg

SAR(1 g) = 0.356 W/kg; SAR(10 g) = 0.145 W/kg

Maximum value of SAR (measured) = 0.360 W/kg



#3 Date: 2019-10-14

WCDMA1900_RMC_RIGHT Cheek_Ch9400

Communication System: UID 0, Generic WCDMA (0); Frequency: 1880.0 MHz; Duty Cycle: 1:1

Medium parameters used: $f = 1880.0$ MHz; $\sigma = 1.54$ S/m; $\epsilon_r = 53.28$; $\rho = 1000$ kg/m³

Phantom section: Left Section

DASY5 Configuration:

- Probe: EX3DV4 - SN7396; ConvF(8.13, 8.13, 8.13); Calibrated: 05,06.2019;
- Sensor-Surface: 4mm (Mechanical Surface Detection)
- Electronics: DAE4 Sn387; Calibrated: 06.09.2018
- Phantom: SAM 1; Type: SAM;
 - Measurement SW: DASY52, Version 52.8 (2); SEMCAD X Version 14.6.10 (7164)

RIGHT HEAD/L-C/Area Scan (7x11x1): Measurement grid: dx=15mm, dy=15mm

Maximum value of SAR (measured) = 0.286 W/kg

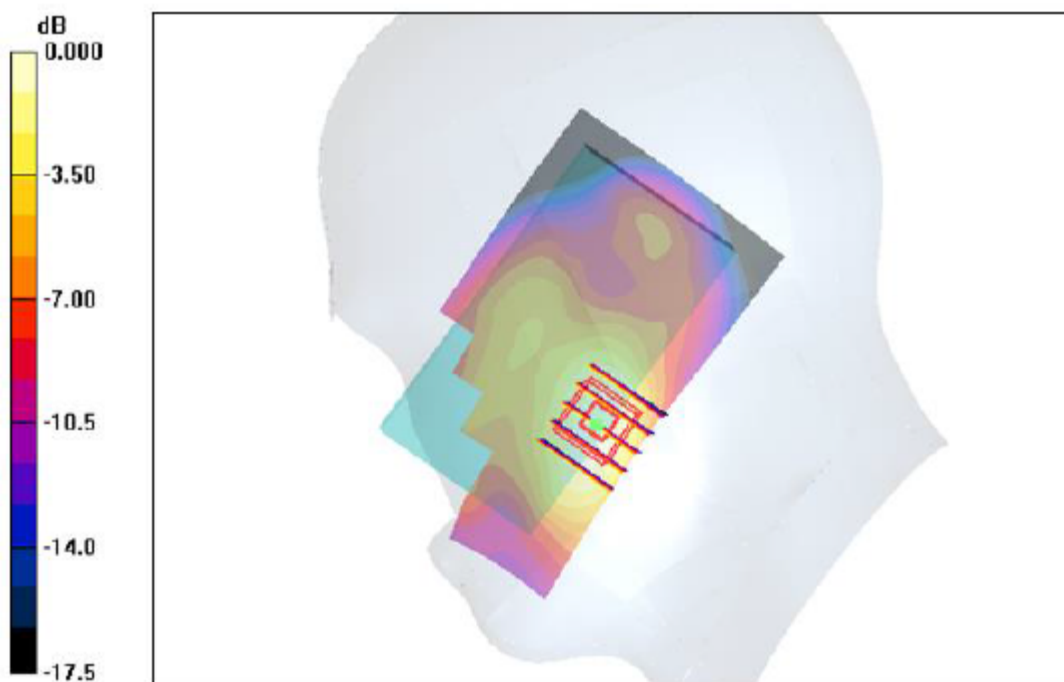
RIGHT HEAD/L-C/Zoom Scan (5x5x7)/Cube 0: Measurement grid: dx=8mm, dy=8mm, dz=5mm

Reference Value = 3.67 V/m; Power Drift = -0.10 dB

Peak SAR (extrapolated) = 0.268 W/kg

SAR(1 g) = 0.255 W/kg; SAR(10 g) = 0.146 W/kg

Maximum value of SAR (measured) = 0.220 W/kg



#4 Date: 2019-10-12

WCDMA850_RMC_RIGHT Cheek_Ch4233

Communication System: UID 0, Generic WCDMA (0); Frequency: 846.6 MHz; Duty Cycle: 1:1

Medium parameters used: $f = 846.6$ MHz; $\sigma = 1.06$ S/m; $\epsilon_r = 55.57$; $\rho = 1000$ kg/m³

Phantom section: Left Section

DASY5 Configuration:

- Probe: EX3DV4 - SN7396; ConvF(9.71, 9.71, 9.71); Calibrated: 05,06.2019;
- Sensor-Surface: 4mm (Mechanical Surface Detection)
- Electronics: DAE4 Sn387; Calibrated: 06.09.2018
- Phantom: SAM 1; Type: SAM;
- Measurement SW: DASY52, Version 52.8 (2); SEMCAD X Version 14.6.10 (7164)

RIGHT HEAD/L-C/Area Scan (7x11x1): Measurement grid: dx=15mm, dy=15mm

Maximum value of SAR (measured) = 0.527 W/kg

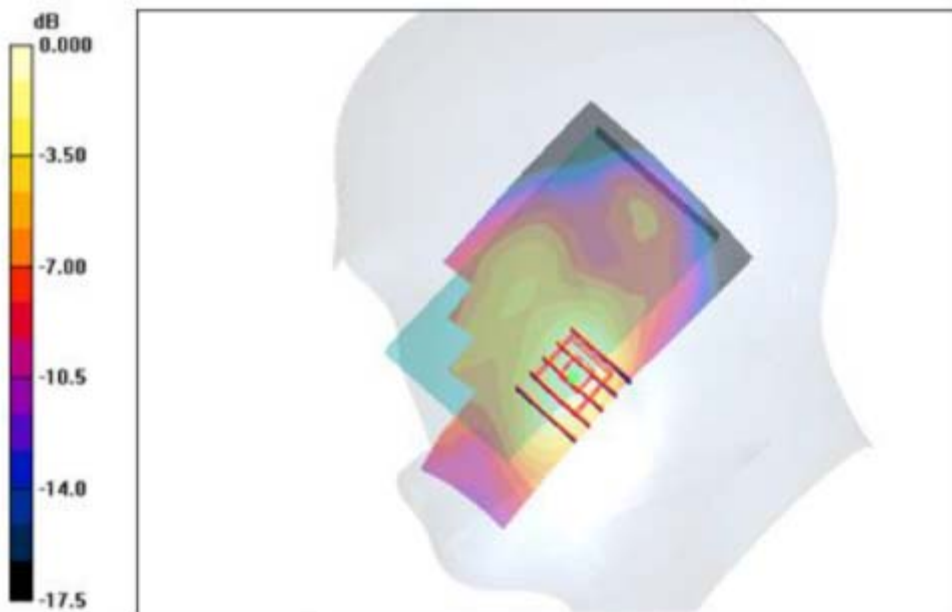
RIGHT HEAD/L-C/Zoom Scan (5x5x7)/Cube 0: Measurement grid: dx=8mm, dy=8mm, dz=5mm

Reference Value = 6.74 V/m; Power Drift = 0.09 dB

Peak SAR (extrapolated) = 0.568 W/kg

SAR(1 g) = 0.487 W/kg; SAR(10 g) = 0.253 W/kg

Maximum value of SAR (measured) = 0.536 W/kg



#5

Date: 2019-10-12

LTE Band 5_Right Cheek_Ch20600

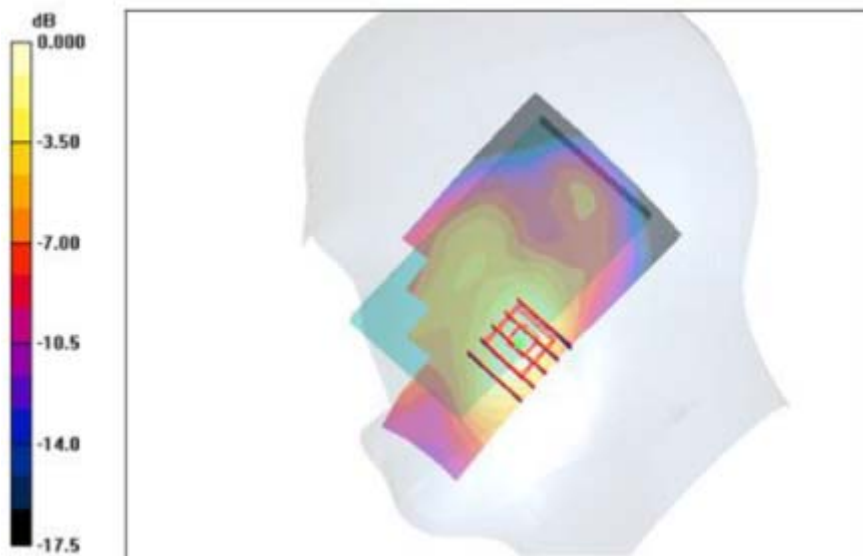
Communication System: UID 0, Generic LTE (0); Frequency: 844.0 MHz;Duty Cycle: 1:1
Medium parameters used (interpolated): $f = 844.0$ MHz; $\sigma = 0.933$ S/m; $\epsilon_r = 40.932$; $\rho = 1000$ kg/m³
Phantom section:Right Section

DASY5 Configuration:

- Probe: EX3DV4 – SN7396; ConvF(9.87, 9.87, 9.87); Calibrated: 05. 06,2019;
- Sensor-Surface: 2mm (Mechanical Surface Detection)
- Electronics: DAE4 Sn387; Calibrated: 06.09.2018
- Phantom: SAM; Type: QD000P40CD; Serial: TP:1670
- Measurement SW: DASY52, Version 52.8 (2); SEMCAD X Version 14.6.10 (7164)

Area Scan (7x11x1):Measurement grid: dx=15mm, dy=15mm
Maximum value of SAR (interpolated) = 0.674 mW/g

Zoom Scan (5x5x7)/Cube 0:Measurement grid: dx=8mm, dy=8mm, dz=5mm
Reference Value = 6.47 V/m; Power Drift = -0.16 dB
Peak SAR (extrapolated) = 0.652 W/kg
SAR(1 g) = 0.667 mW/g; SAR(10 g) = 0.345 mW/g
Maximum value of SAR (measured) = 0.644 mW/g



#6

Date: 2019-10-11

LTE Band 41_Left Cheek_Ch40340

Communication System: UID 0, Generic LTE (0); Frequency: 2570MHz;

Medium parameters used (interpolated): $f=2570$ MHz; $\sigma=1.92$ S/m; $\epsilon_r=38.26$; $\rho=1000$ kg/m³

Phantom section: Left Section

DASY5 Configuration:

- Probe: EX3DV4 – SN7396; ConvF(7.38, 7.38, 7.38); Calibrated: 05. 06,2019;
- Sensor-Surface: 2mm (Mechanical Surface Detection)
- Electronics: DAE4 Sn387; Calibrated: 06.09.2018
- Phantom: SAM; Type: QD000P40CD; Serial: TP:1670
- Measurement SW: DASY52, Version 52.8 (2); SEMCAD X Version 14.6.10 (7164)

Area Scan (8x13x1):Measurement grid: dx=15mm, dy=15mm

Maximum value of SAR (interpolated) = 0.295 mW/g

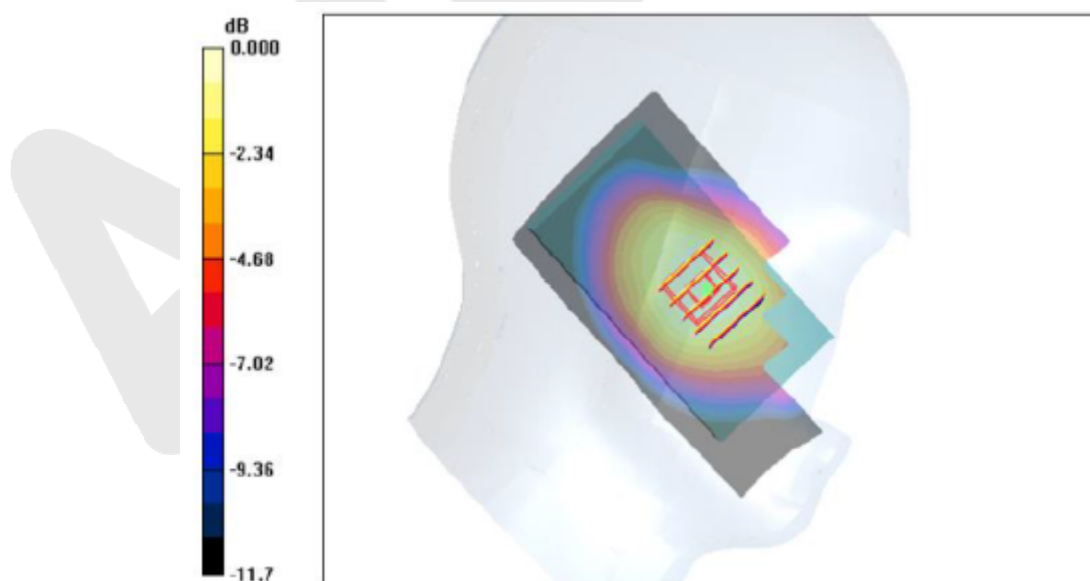
Zoom Scan (5x5x7)/Cube 0:Measurement grid: dx=8mm, dy=8mm, dz=5mm

Reference Value = 9.54 V/m; Power Drift = -0.06 dB

Peak SAR (extrapolated) = 0.293 W/kg

SAR(1 g) = 0.274 mW/g; SAR(10 g) = 0.162 mW/g

Maximum value of SAR (measured) = 0.280 mW/g



#7Date: 2019-10-15

WIFI 2.4G_802.11b_RIGHTCheek_Ch1

Communication System: UID 0, wifi (0); Frequency: 2412MHz;Duty Cycle: 1:1

Medium parameters used (interpolated): $f = 2412$ MHz; $\sigma = 1.97$ S/m; $\epsilon_r = 51.89$; $\rho = 1000$ kg/m³

Phantom section: LEFT Section

DASY5 Configuration:

- Probe: EX3DV4 - SN7396; ConvF(7.57, 7.57, 7.57); Calibrated: 05,06.2019;
- Sensor-Surface: 4mm (Mechanical Surface Detection)
- Electronics: DAE4 Sn387; Calibrated: 06.09.2018
- Phantom: SAM 1; Type: SAM;
- Measurement SW: DASY52, Version 52.8 (2); SEMCAD X Version 14.6.10 (7164)

RIGHTHEAD/L-C/Zoom Scan (5x5x7)/Cube 0: Measurement grid: dx=7mm, dy=7mm, dz=5mm

Maximum value of SAR (measured) = 0.324 W/kg

RIGHTHEAD/L-C/Zoom Scan (5x5x7)/Cube 0: Measurement grid: dx=7mm, dy=7mm, dz=5mm

Reference Value = 12.54 V/m; Power Drift = -0.06 dB

Peak SAR (extrapolated) = 0.265 W/kg

SAR(1 g) = 0.248 W/kg; SAR(10 g) = 0.124 W/kg

Maximum value of SAR (measured) = 0.318 W/kg



#8Date: 2019-10-12

GSM850_GPRS_4TX_Body Back_Ch190

Communication System: UID 0, GPRS(4 Tx slots) (0); Frequency: 836.6MHz;Duty Cycle: 1:1.99986

Medium parameters used (interpolated): $f = 836.6$ MHz; $\sigma = 1.06$ S/m; $\epsilon_r = 55.57$; $\rho = 1000$ kg/m³

Phantom section: Flat Section

DASY5 Configuration:

- Probe: EX3DV4 - SN7396; ConvF(9.88, 9.88, 9.88); Calibrated: 05,06.2019;
- Sensor-Surface: 4mm (Mechanical Surface Detection)
- Electronics: DAE4 Sn387; Calibrated: 06.09.2018
- Phantom: SAM I; Type: SAM;
- Measurement SW: DASY52, Version 52.8 (2); SEMCAD X Version 14.6.10 (7164)

BODY/4ST-BACK/Area Scan (9x15x1): Measurement grid: dx=15mm, dy=15mm

Maximum value of SAR (measured) = 0.957 W/kg

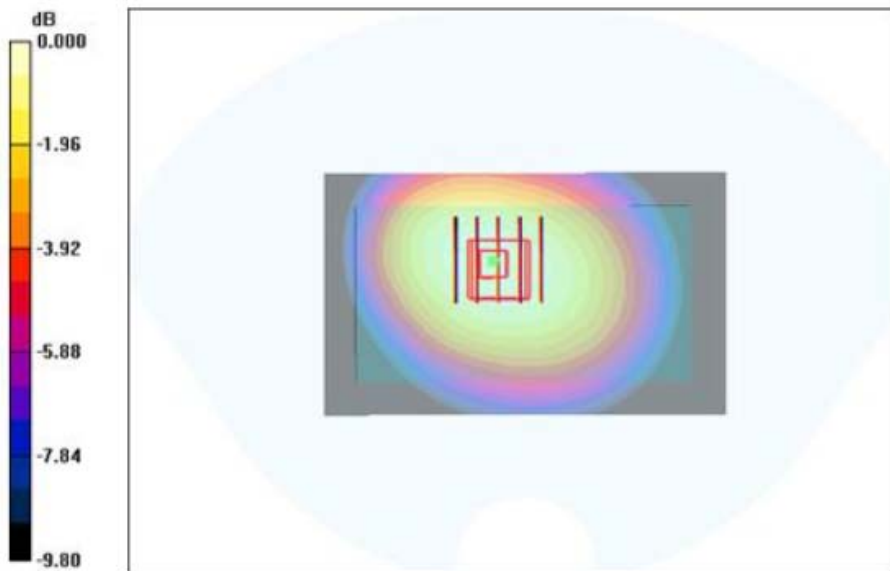
BODY/4ST-BACK/Zoom Scan (5x5x7)/Cube 0: Measurement grid: dx=8mm, dy=8mm, dz=5mm

Reference Value = 17.657 V/m; Power Drift = -0.09 dB

Peak SAR (extrapolated) = 0.882 W/kg

SAR(1 g) = 0.768 W/kg; SAR(10 g) = 0.462 W/kg

Maximum value of SAR (measured) = 0.849 W/kg



#9Date: 2019-10-14

GSM1900_GPRS_4TX_Body Back_Ch611

Communication System: UID 0, GPRS(4 Tx slots) (0); Frequency: 1880.0MHz;Duty Cycle: 1:1.99986

Medium parameters used: $f = 1880.0$ MHz; $\sigma = 1.54$ S/m; $\epsilon_r = 53.28$; $\rho = 1000$ kg/m³

Phantom section: Flat Section

DASY5 Configuration:

- Probe: EX3DV4 - SN7396; ConvF(7.97, 7.97, 7.97); Calibrated: 05,06.2019;
- Sensor-Surface: 4mm (Mechanical Surface Detection)
- Electronics: DAE4 Sn387; Calibrated: 06.09.2018
- Phantom: SAM I; Type: SAM;
- Measurement SW: DASY52, Version 52.8 (2); SEMCAD X Version 14.6.10 (7164)

BODY/4ST-BACK/Area Scan (9x15x1): Measurement grid: dx=15mm, dy=15mm

Maximum value of SAR (measured) =0.774 W/kg

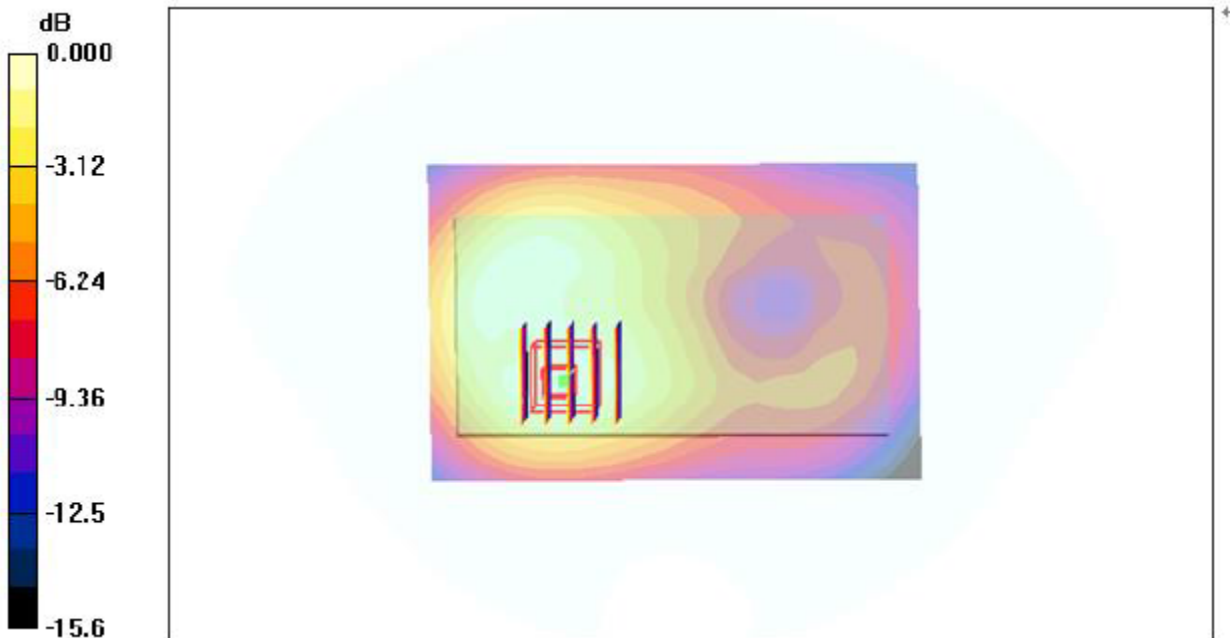
BODY/4ST-BACK/Zoom Scan (5x5x7)/Cube 0: Measurement grid: dx=8mm, dy=8mm, dz=5mm

Reference Value = 8.36 V/m; Power Drift = 0.12 dB

Peak SAR (extrapolated) = 0.714 W/kg

SAR(1 g) = 0.687 W/kg; SAR(10 g) = 0.457 W/kg

Maximum value of SAR (measured) = 0.736 W/kg



#10Date: 2019-10-14

WCDMA 1900_RMC 12.2K_Body Back_Ch9400

Communication System: UID 0, Generic WCDMA (0); Frequency: 1880.0 MHz; Duty Cycle: 1:1

Medium parameters used: $f = 1880.0$ MHz; $\sigma = 1.54$ S/m; $\epsilon_r = 53.28$; $\rho = 1000$ kg/m³

Phantom section: Flat Section

DASY5 Configuration:

- Probe: EX3DV4 - SN7396; ConvF(7.97, 7.97, 7.97); Calibrated: 05,06.2019;
- Sensor-Surface: 4mm (Mechanical Surface Detection)
- Electronics: DAE4 Sn387; Calibrated: 06.09.2018
- Phantom: SAM I; Type: SAM;
- Measurement SW: DASY52, Version 52.8 (2); SEMCAD X Version 14.6.10 (7164)

BODY/BACK/Area Scan (9x15x1): Measurement grid: dx=15mm, dy=15mm

Maximum value of SAR (measured) =0.611 W/kg

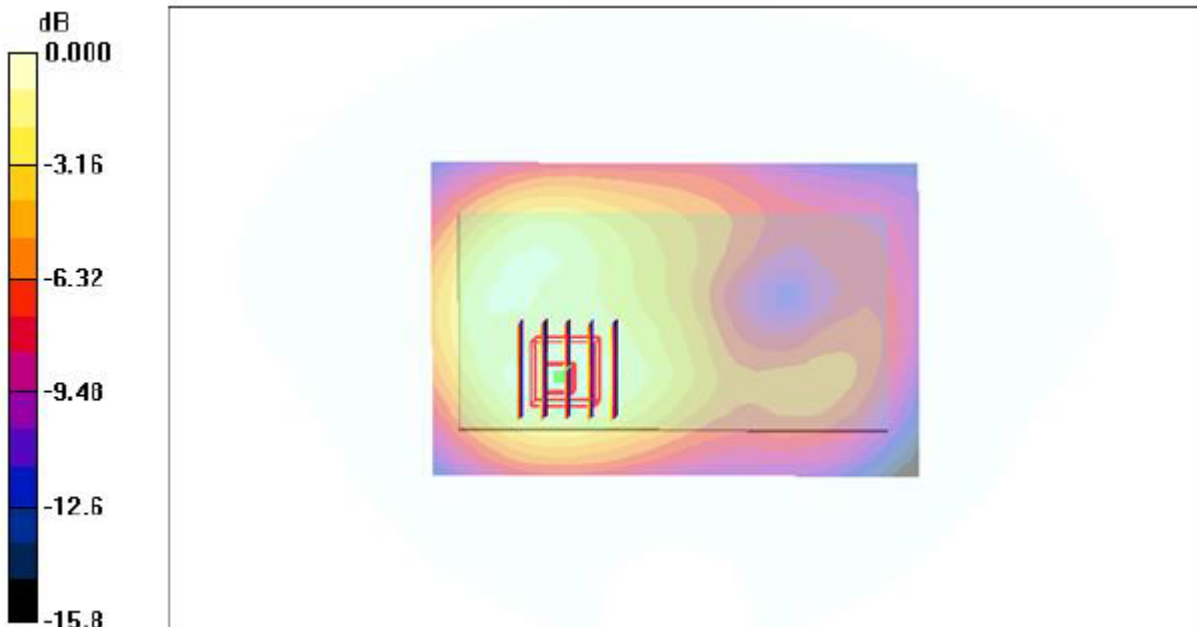
BODY/BACK/Zoom Scan (5x5x7)/Cube 0: Measurement grid: dx=8mm, dy=8mm, dz=5mm

Reference Value = 10.12 V/m; Power Drift = 0.14 dB

Peak SAR (extrapolated) = 0.554 W/kg

SAR(1 g) = 0.545 W/kg; SAR(10 g) = 0.305 W/kg

Maximum value of SAR (measured) = 0.562 W/kg



#11Date: 2019-10-12

WCDMA 850_RMC 12.2K_Body Back_Ch4233

Communication System: UID 0, Generic WCDMA (0); Frequency: 846.6 MHz; Duty Cycle: 1:1

Medium parameters used (interpolated): $f = 846.6$ MHz; $\sigma = 1.06$ S/m; $\epsilon_r = 55.57$; $\rho = 1000$ kg/m³

Phantom section: Flat Section

DASY5 Configuration:

- Probe: EX3DV4 - SN7396; ConvF(9.88, 9.88, 9.88); Calibrated: 05,06.2019;
- Sensor-Surface: 4mm (Mechanical Surface Detection)
- Electronics: DAE4 Sn387; Calibrated: 06.09.2018
- Phantom: SAM I; Type: SAM;
- Measurement SW: DASY52, Version 52.8 (2); SEMCAD X Version 14.6.10 (7164)

BODY/BACK/Area Scan (9x15x1): Measurement grid: dx=15mm, dy=15mm

Maximum value of SAR (measured) =0.697 W/kg

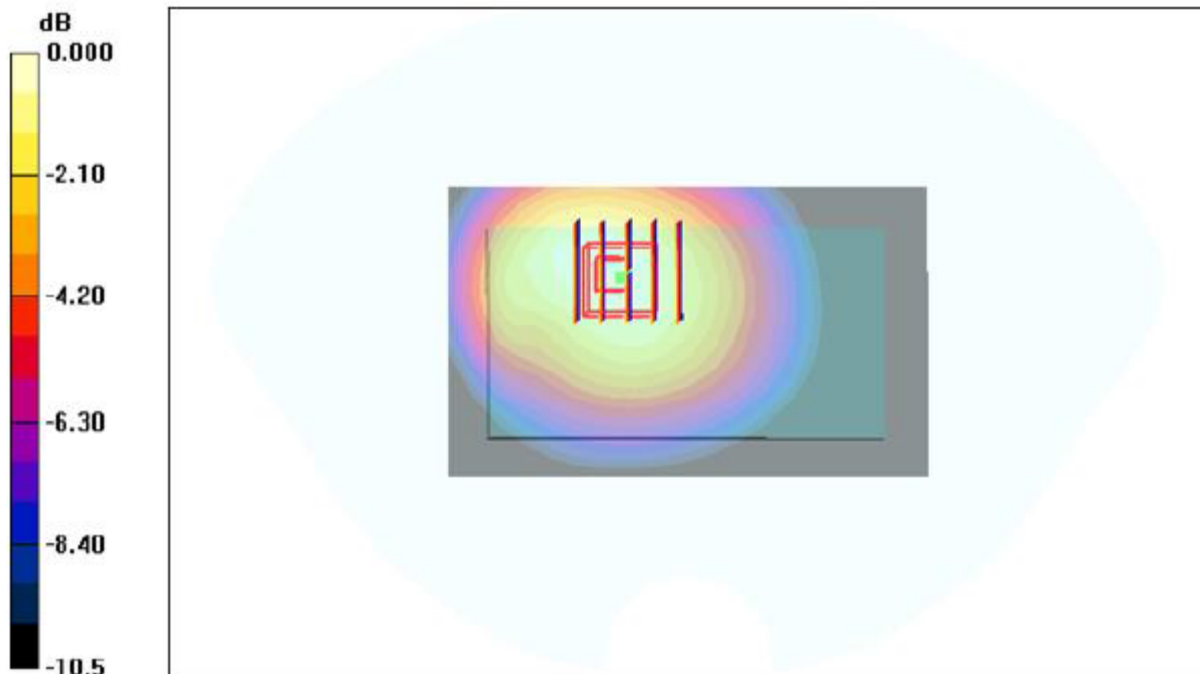
BODY/BACK/Zoom Scan (5x5x7)/Cube 0: Measurement grid: dx=8mm, dy=8mm, dz=5mm

Reference Value = 13.87 V/m; Power Drift = -0.12 dB

Peak SAR (extrapolated) = 0.672 W/kg

SAR(1 g) = 0.655 W/kg; SAR(10 g) = 0.365 W/kg

Maximum value of SAR (measured) = 0.679 W/kg



#12

Date: 2019-10-12

LTE Band 5_ Body Back_1RB_Ch20600

Communication System: UID 0, Generic LTE (0); Frequency: 844.0 MHz; Duty Cycle: 1:1
Medium parameters used (interpolated): $f = 844.0$ MHz; $\sigma = 0.933$ S/m; $\epsilon_r = 40.932$; $\rho = 1000$ kg/m³
Phantom section: Flat Section

DASY5 Configuration:

- Probe: EX3DV4 – SN7396; ConvF(9.87, 9.87, 9.87); Calibrated: 05.06.2019;
- Sensor-Surface: 2mm (Mechanical Surface Detection)
- Electronics: DAE4 Sn387; Calibrated: 06.09.2018
- Phantom: SAM; Type: QD000P40CD; Serial: TP:1670
- Measurement SW: DASY52, Version 52.8 (2); SEMCAD X Version 14.6.10 (7164)

BODY/BACK-L/Area Scan (8x13x1): Measurement grid: dx=15mm, dy=15mm

Maximum value of SAR (interpolated) = 0.582 mW/g

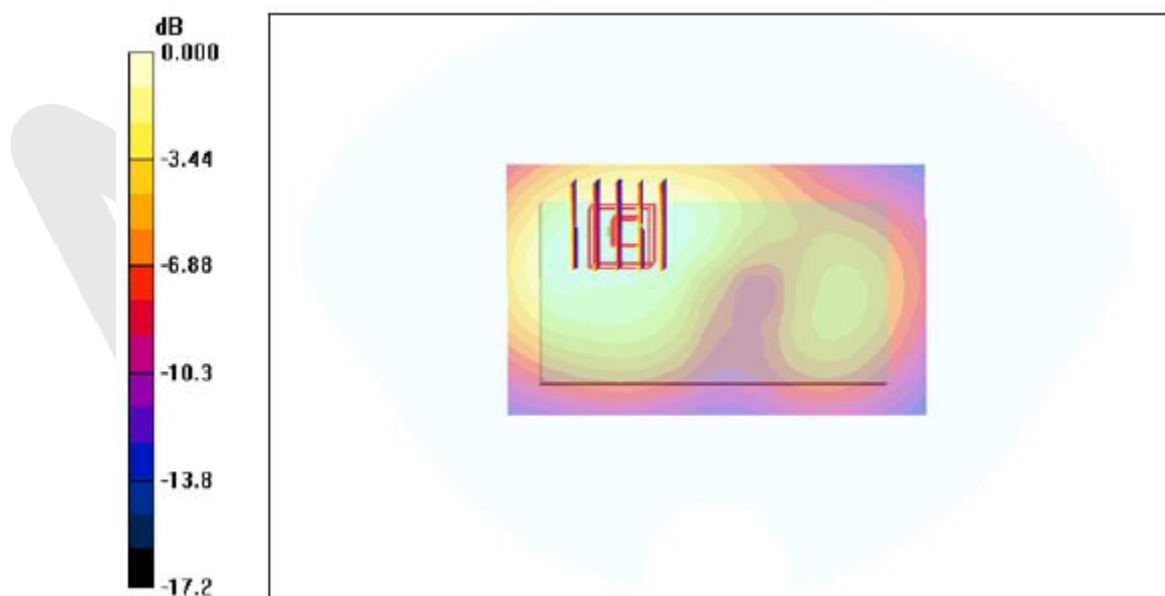
BODY/BACK-L/Zoom Scan (5x5x7)/Cube 0: Measurement grid: dx=8mm, dy=8mm, dz=5mm

Reference Value = 15.41 V/m; Power Drift = 0.10 dB

Peak SAR (extrapolated) = 0.565 W/kg

SAR(1 g) = 0.531 mW/g; SAR(10 g) = 0.285 mW/g

Maximum value of SAR (measured) = 0.584 mW/g



#13

Date: 2019-10-11

LTE Band 41_ Body Back_1RB_ Ch40340

Communication System: UID 0, Generic LTE (0); Frequency: 2570 MHz;

Medium parameters used (interpolated): $f=2570$ MHz; $\sigma=1.92$ S/m; $\epsilon_r=38.26$; $\rho=1000$ kg/m³

Phantom section: Left Section

DASY5 Configuration:

- Probe: EX3DV4 – SN7396; ConvF(7.38, 7.38, 7.38); Calibrated: 05. 06,2019;
- Sensor-Surface: 2mm (Mechanical Surface Detection)
- Electronics: DAE4 Sn387; Calibrated: 06.09.2018
- Phantom: SAM; Type: QD000P40CD; Serial: TP:1670
- Measurement SW: DASY52, Version 52.8 (2); SEMCAD X Version 14.6.10 (7164)

BODY/BACK-L/Area Scan (8x13x1):Measurement grid: dx=15mm, dy=15mm

Maximum value of SAR (interpolated) = 0.620 mW/g

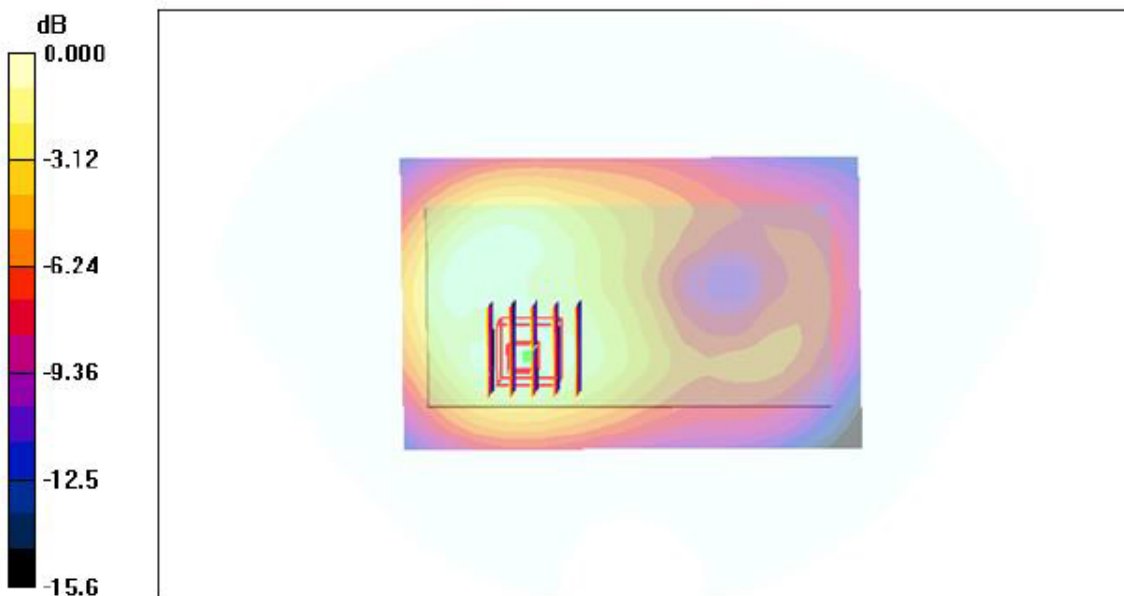
BODY/BACK-L/Zoom Scan (5x5x7)/Cube 0:Measurement grid: dx=8mm, dy=8mm, dz=5mm

Reference Value = 22.9 V/m; Power Drift = -0.07 dB

Peak SAR (extrapolated) = 0.600 W/kg

SAR(1 g) = 0.566 mW/g; SAR(10 g) = 0.301 mW/g

Maximum value of SAR (measured) = 0.585 mW/g



#14 Date:2019-10-15

WIFI 2.4G_802.11b_Body Back_Ch1

Communication System: UID 0, wifi (fcc) (0); Frequency: 2412 MHz;Duty Cycle: 1:1

Medium parameters used (interpolated): $f = 2412$ MHz; $\sigma = 1.97$ S/m; $\epsilon_r = 51.89$; $\rho = 1000$ kg/m³

Phantom section: Flat Section

DASY5 Configuration:

- Probe: EX3DV4 - SN7396; ConvF(7.53, 7.53, 7.53); Calibrated: 05,06.2019;
- Sensor-Surface: 4mm (Mechanical Surface Detection)
- Electronics: DAE4 Sn387; Calibrated: 06.09.2018
- Phantom: SAM 1; Type: SAM;
- Measurement SW: DASY52, Version 52.8 (2); SEMCAD X Version 14.6.10 (7164)

Configuration/BACK/Area Scan (33x17x1): Measurement grid: dx=10mm, dy=10mm

Maximum value of SAR (measured) = 0.324 W/kg

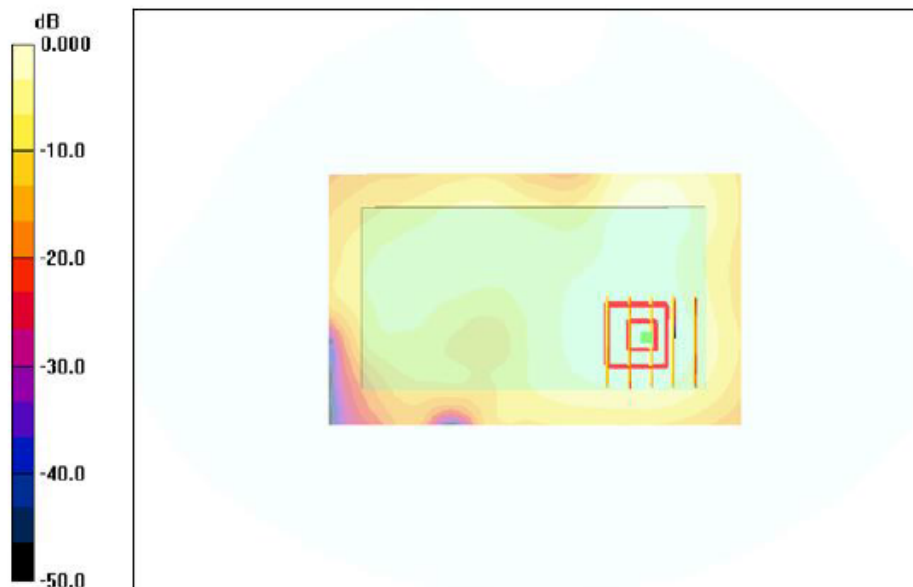
Configuration/BACK/Zoom Scan (7x7x7)/Cube 0: Measurement grid: dx=5mm, dy=5mm, dz=5mm

Reference Value = 9.104 V/m; Power Drift = 0.08 dB

Peak SAR (extrapolated) = 0.315 W/kg

SAR(1 g) = 0.274 W/kg; SAR(10 g) = 0.158 W/kg

Maximum value of SAR (measured) = 0.305 W/kg



#15

Date: 2019-10-11

LTE Band 38_Left Cheek_Ch37850

Communication System: UID 0, Generic LTE (0); Frequency: 2580MHz;

Medium parameters used (interpolated): $f=2580$ MHz; $\sigma=1.92$ S/m; $\epsilon_r=38.26$; $\rho=1000$ kg/m³

Phantom section: Left Section

DASY5 Configuration:

- Probe: EX3DV4 – SN7396; ConvF(7.38, 7.38, 7.38); Calibrated: 05.06.2019;
- Sensor-Surface: 2mm (Mechanical Surface Detection)
- Electronics: DAE4 Sn387; Calibrated: 06.09.2018
- Phantom: SAM; Type: QD000P40CD; Serial: TP:1670
- Measurement SW: DASY52, Version 52.8 (2); SEMCAD X Version 14.6.10 (7164)

Area Scan (8x13x1):Measurement grid: dx=15mm, dy=15mm

Maximum value of SAR (interpolated) = 0.286 mW/g

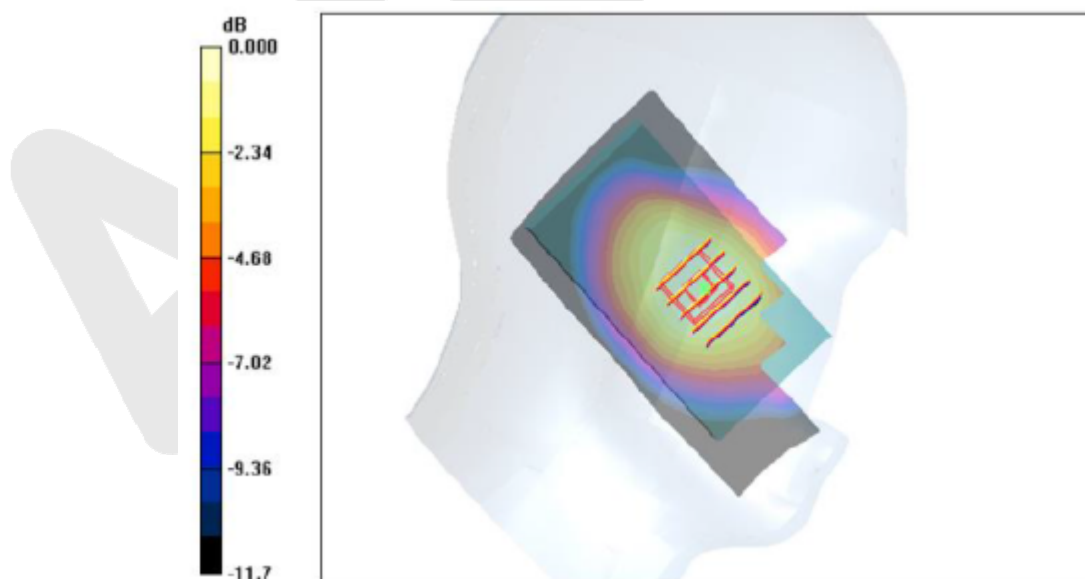
Zoom Scan (5x5x7)/Cube 0:Measurement grid: dx=8mm, dy=8mm, dz=5mm

Reference Value = 10.58 V/m; Power Drift = -0.08 dB

Peak SAR (extrapolated) = 0.273 W/kg

SAR(1 g) = 0.247 mW/g; SAR(10 g) = 0.156 mW/g

Maximum value of SAR (measured) = 0.26 mW/g



#16

Date: 2019-10-11

LTE Band 38_ Body Back_1RB_ Ch37850

Communication System: UID 0, Generic LTE (0); Frequency: 2580 MHz;

Medium parameters used (interpolated): $f=2580$ MHz; $\sigma=1.92$ S/m; $\epsilon_r=38.26$; $\rho=1000$ kg/m³

Phantom section: Left Section

DASY5 Configuration:

- Probe: EX3DV4 – SN7396; ConvF(7.38, 7.38, 7.38); Calibrated: 05. 06,2019;
- Sensor-Surface: 2mm (Mechanical Surface Detection)
- Electronics: DAE4 Sn387; Calibrated: 06.09.2018
- Phantom: SAM; Type: QD000P40CD; Serial: TP:1670
- Measurement SW: DASY52, Version 52.8 (2); SEMCAD X Version 14.6.10 (7164)

BODY/BACK-L/Area Scan (8x13x1):Measurement grid: dx=15mm, dy=15mm

Maximum value of SAR (interpolated) = 0.580 mW/g

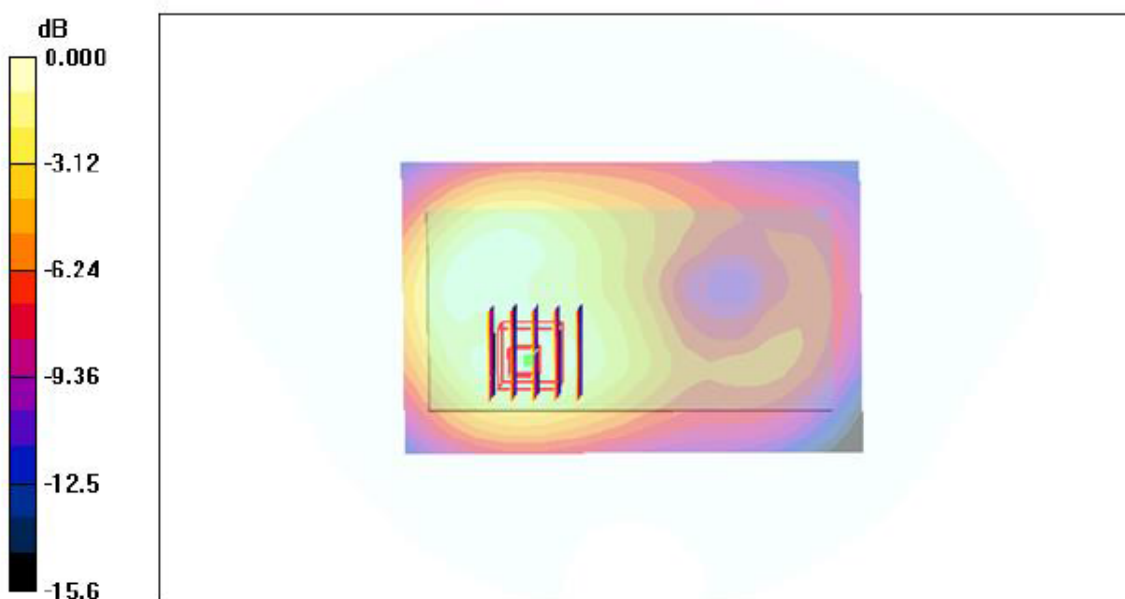
BODY/BACK-L/Zoom Scan (5x5x7)/Cube 0:Measurement grid: dx=8mm, dy=8mm, dz=5mm

Reference Value = 21.3 V/m; Power Drift = -0.11 dB

Peak SAR (extrapolated) = 0.600 W/kg

SAR(1 g) = 0.525 mW/g; SAR(10 g) = 0.306 mW/g

Maximum value of SAR (measured) = 0.565 mW/g



Appendix D. DASY System Calibration Certificate

Anbotek



Add: No.51 Xueyuan Road, Haidian District, Beijing, 100191, China
Tel: +86-10-62304633-2218 Fax: +86-10-62304633-2209
E-mail: cttl@chinattl.com Http://www.chinattl.cn



中国认可
国际互认
校准
CALIBRATION
CNAS L0570

Client **Anbotek (Auden)**

Certificate No: **Z19-68716**

CALIBRATION CERTIFICATE

Object EX3DV4 - SN:7396
Calibration Procedure(s) FF-Z11-007-03
Calibration Procedures for Dosimetric E-field Probes
Calibration date: May06, 2019

This calibration Certificate documents the traceability to national standards, which realize the physical units of measurements(SI). The measurements and the uncertainties with confidence probability are given on the following pages and are part of the certificate.

All calibrations have been conducted in the closed laboratory facility: environment temperature(22±3)°C and humidity<70%.

Calibration Equipment used (M&TE critical for calibration)

Primary Standards	ID #	Cal Date(Calibrated by, Certificate No.)	Scheduled Calibration
Power Meter NRP2	101919	20-Jun-18 (CTTL, No.J18X07447)	Jun-19
Power sensor NRP-Z91	101547	20-Jun-18 (CTTL, No.J18X07447)	Jun-19
Power sensor NRP-Z91	101548	20-Jun-18 (CTTL, No.J18X07447)	Jun-19
Reference10dBAttenuator	18N50W-10dB	13-Mar-19(CTTL, No.J19X01547)	Mar-20
Reference20dBAttenuator	18N50W-20dB	13-Mar-19(CTTL, No.J19X01548)	Mar-20
Reference Probe EX3DV4	SN 7433	26-Sep-18(SPEAG, No.EX3-7433_Sep18)	Sep-19
DAE4	SN 549	13-Dec-18(SPEAG, No.DAE4-549_Dec18)	Dec -19
Secondary Standards	ID #	Cal Date(Calibrated by, Certificate No.)	Scheduled Calibration
SignalGeneratorMG3700A	6201052605	27-Jun-18 (CTTL, No.J18X04776)	Jun-19
Network Analyzer E5071C	MY46110673	13-Jan-19 (CTTL, No.J19X00285)	Jan -20

	Name	Function	Signature
Calibrated by:	Yu Zongying	SAR Test Engineer	
Reviewed by:	Lin Hao	SAR Test Engineer	
Approved by:	Qi Dianyuan	SAR Project Leader	

Issued: May07, 2019

This calibration certificate shall not be reproduced except in full without written approval of the laboratory.