

## HAC-RF Emission

Communication System: UID 0, CW; Frequency: 835 MHz; Duty Cycle: 1:1

Phantom section: RF Section

DASY5 Configuration:

- Probe: ER3DV6 - SN2339; ConvF(1, 1, 1); Calibrated: 2/14/2014;
- Sensor-Surface: (Fix Surface)
- Electronics: DAE4 Sn1360; Calibrated: 3/17/2014
- Phantom: HAC Test Arch with AMCC; Type: SD HAC P01 BB
- Measurement SW: DASY52, Version 52.8 (7); SEMCAD X Version 14.6.10 (7164)

### Dipole E-Field measurement/835 MHz/Hearing Aid Compatibility Test at 15mm distance

**(41x361x1):** Interpolated grid: dx=0.5000 mm, dy=0.5000 mm

Device Reference Point: 0, 0, -6.3 mm

Reference Value = 121.9 V/m; Power Drift = 0.03 dB

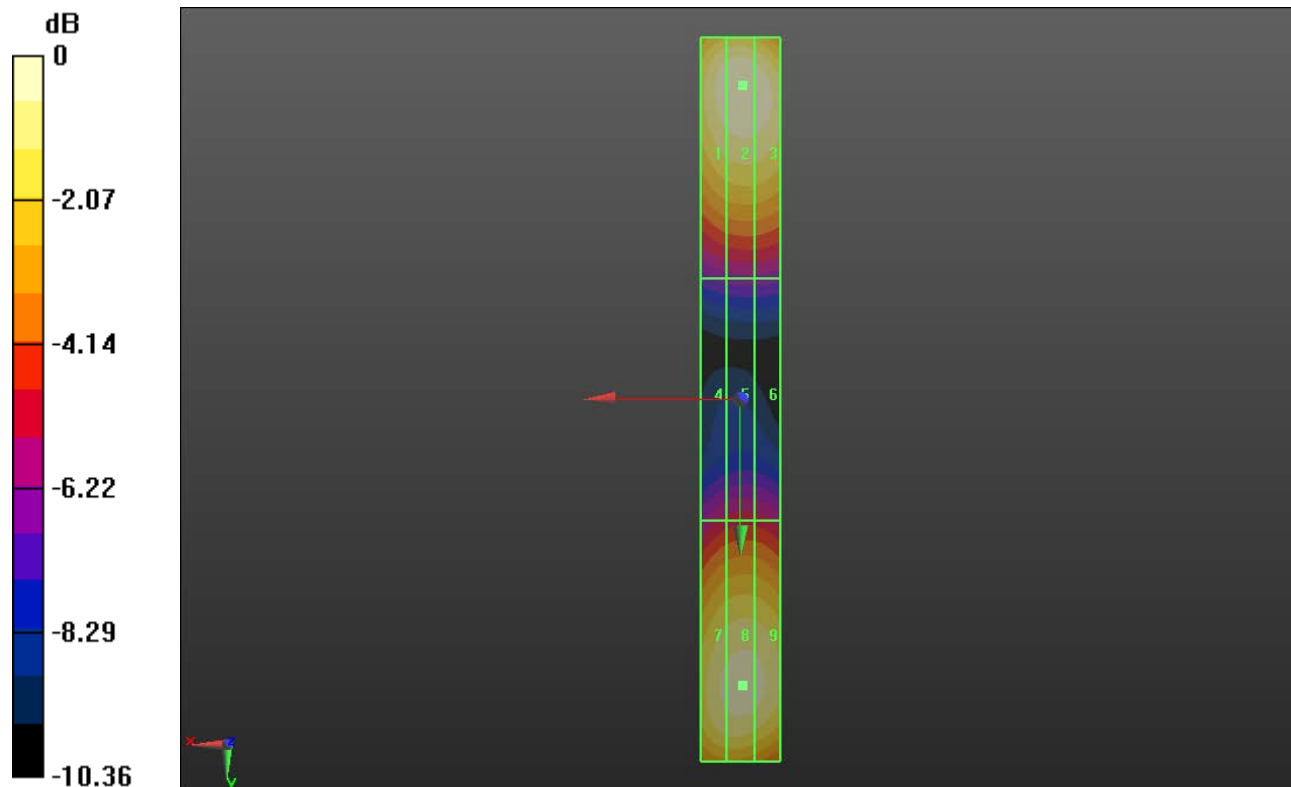
PMR not calibrated. PMF = 1.000 is applied.

E-field emissions = 113.1 V/m

Near-field category: **M4 (AWF 0 dB)**

PMF scaled E-field

Grid 1 <b>M4</b> <b>110.5 V/m</b>	Grid 2 <b>M4</b> <b>113.1 V/m</b>	Grid 3 <b>M4</b> <b>111.4 V/m</b>
Grid 4 <b>M4</b> <b>61.79 V/m</b>	Grid 5 <b>M4</b> <b>63.19 V/m</b>	Grid 6 <b>M4</b> <b>62.79 V/m</b>
Grid 7 <b>M4</b> <b>106.6 V/m</b>	Grid 8 <b>M4</b> <b>108.8 V/m</b>	Grid 9 <b>M4</b> <b>107.9 V/m</b>



0 dB = 113.1 V/m = 41.07 dBV/m

## HAC-RF Emission

Communication System: UID 0, CW; Frequency: 1880 MHz; Duty Cycle: 1:1

Phantom section: RF Section

DASY5 Configuration:

- Probe: ER3DV6 - SN2339; ConvF(1, 1, 1); Calibrated: 2/14/2014;

- Sensor-Surface: (Fix Surface)

- Electronics: DAE4 Sn1360; Calibrated: 3/17/2014

- Phantom: HAC Test Arch with AMCC; Type: SD HAC P01 BB

- Measurement SW: DASY52, Version 52.8 (7); SEMCAD X Version 14.6.10 (7164)

### Dipole E-Field measurement/1880 MHz/Hearing Aid Compatibility Test at 15mm distance (41x181x1): Interpolated grid: dx=0.5000 mm, dy=0.5000 mm

Device Reference Point: 0, 0, -6.3 mm

Reference Value = 136.1 V/m; Power Drift = 0.03 dB

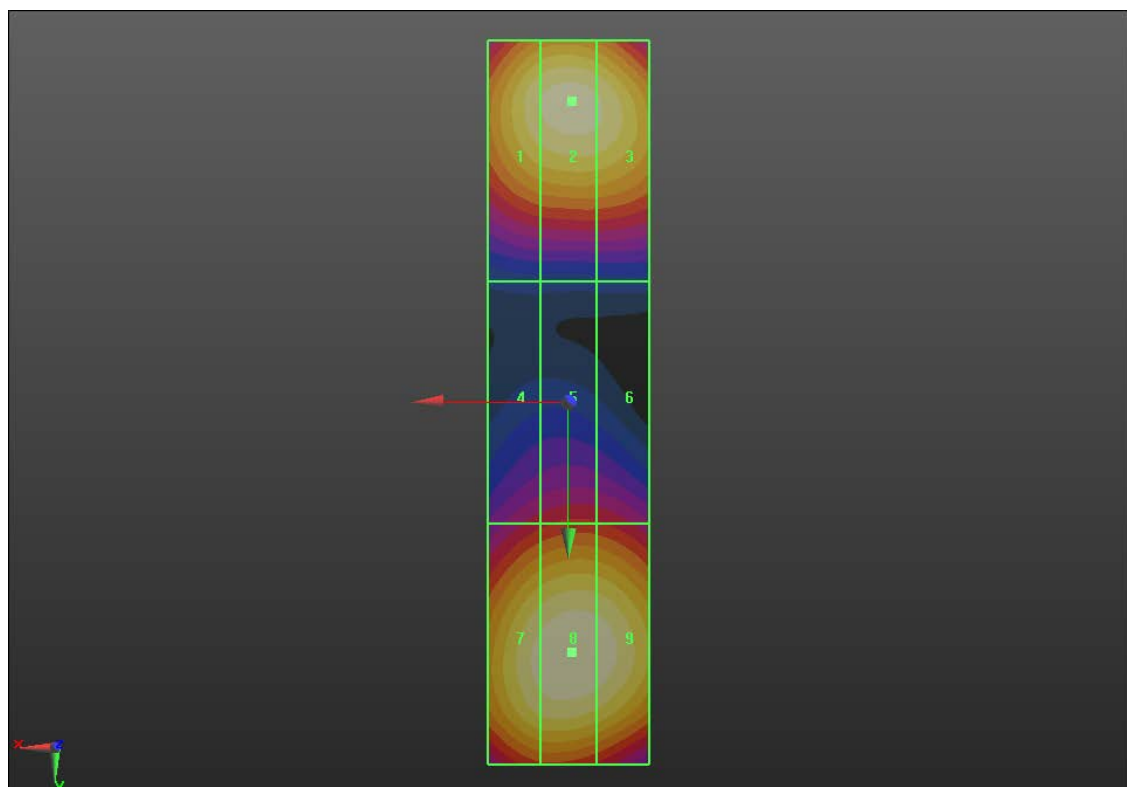
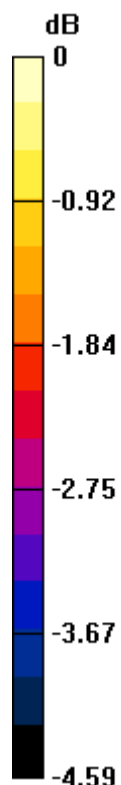
PMR not calibrated. PMF = 1.000 is applied.

E-field emissions = 89.49 V/m

Near-field category: **M3 (AWF 0 dB)**

PMF scaled E-field

Grid 1 <b>M3</b> <b>86.34 V/m</b>	Grid 2 <b>M3</b> <b>88.11 V/m</b>	Grid 3 <b>M3</b> <b>87.06 V/m</b>
Grid 4 <b>M3</b> <b>69.18 V/m</b>	Grid 5 <b>M3</b> <b>70.78 V/m</b>	Grid 6 <b>M3</b> <b>70.44 V/m</b>
Grid 7 <b>M3</b> <b>87.64 V/m</b>	Grid 8 <b>M3</b> <b>89.49 V/m</b>	Grid 9 <b>M3</b> <b>88.67 V/m</b>



$$0 \text{ dB} = 89.49 \text{ V/m} = 39.04 \text{ dBV/m}$$