

Test Laboratory: UL CCS SAR Lab C

GSM 850

Communication System: GPRS-FDD (TDMA, GMSK, 1 slot); Frequency: 824.4 MHz; Duty Cycle: 1:8.00018

Phantom section: RF Section

DASY4 Configuration:

- Probe: H3DV6 - SN6157; ; Calibrated: 1/30/2012
- Sensor-Surface: (Fix Surface)
- Electronics: DAE3 Sn500; Calibrated: 7/14/2011
- Phantom: HAC Test Arch with AMCC; Type: SD HAC P01 BB
- Measurement SW: DASY52, Version 52.8 (0); SEMCAD X Version 14.4.5 (3634)

H-Field/L ch/Hearing Aid Compatibility Test (101x101x1): Measurement grid: dx=5mm, dy=5mm

Maximum value of peak Total field = 0.053 A/m

Probe Modulation Factor = 2.790

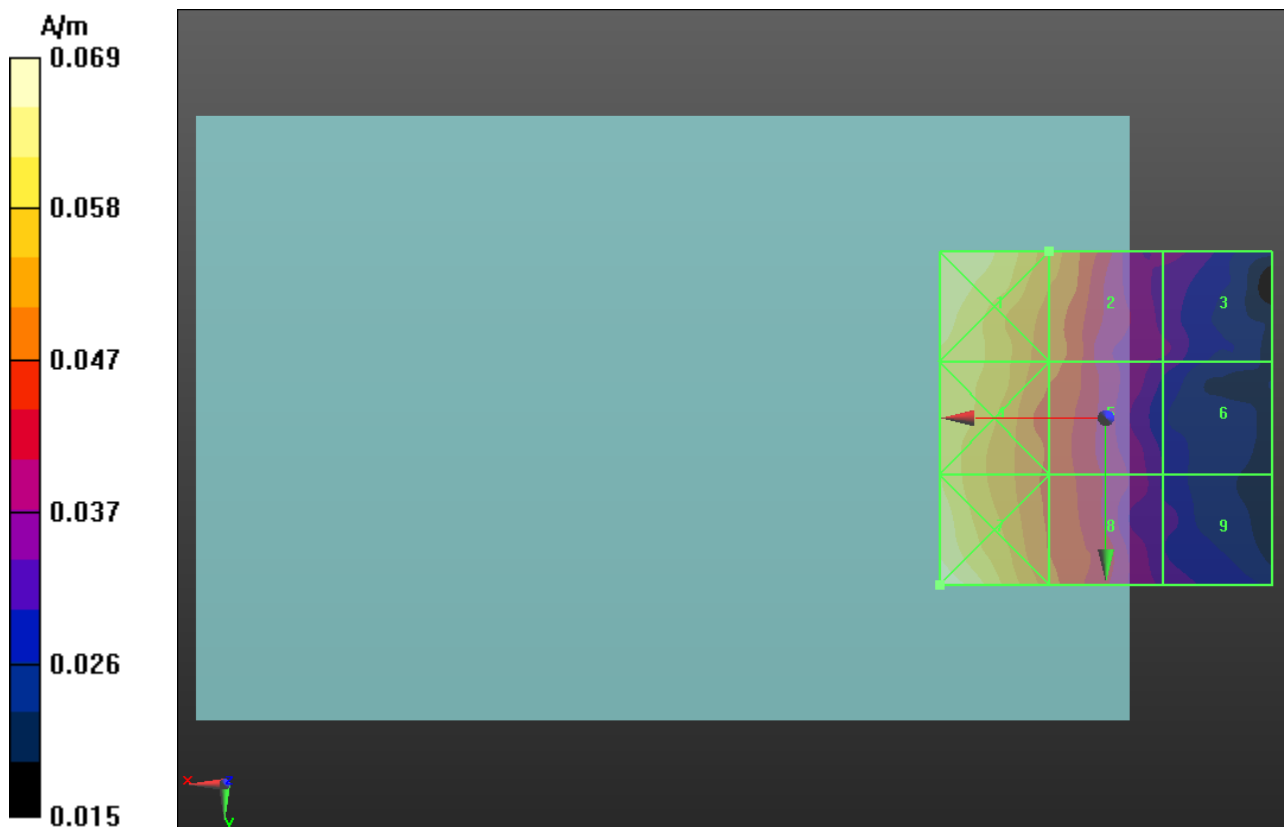
Device Reference Point: 0, 0, -6.3 mm

Reference Value = 0.014 A/m; Power Drift = -0.66 dB

Hearing Aid Near-Field Category: **M4 (AWF -5 dB)**

Peak H-field in A/m

| | | |
|---------------------------|---------------------------|---------------------------|
| Grid 1 0.065 M4 | Grid 2 0.053 M4 | Grid 3 0.035 M4 |
| Grid 4 0.062 M4 | Grid 5 0.049 M4 | Grid 6 0.032 M4 |
| Grid 7 0.069 M4 | Grid 8 0.049 M4 | Grid 9 0.033 M4 |



Test Laboratory: UL CCS SAR Lab C

GSM 850

Communication System: GPRS-FDD (TDMA, GMSK, 1 slot); Frequency: 836.6 MHz; Duty Cycle: 1:8.00018

Phantom section: RF Section

DASY4 Configuration:

- Probe: H3DV6 - SN6157; ; Calibrated: 1/30/2012
- Sensor-Surface: (Fix Surface)
- Electronics: DAE3 Sn500; Calibrated: 7/14/2011
- Phantom: HAC Test Arch with AMCC; Type: SD HAC P01 BB
- Measurement SW: DASY52, Version 52.8 (0); SEMCAD X Version 14.4.5 (3634)

H-Field/M ch/Hearing Aid Compatibility Test (101x101x1): Measurement grid: dx=5mm, dy=5mm

Maximum value of peak Total field = 0.049 A/m

Probe Modulation Factor = 2.790

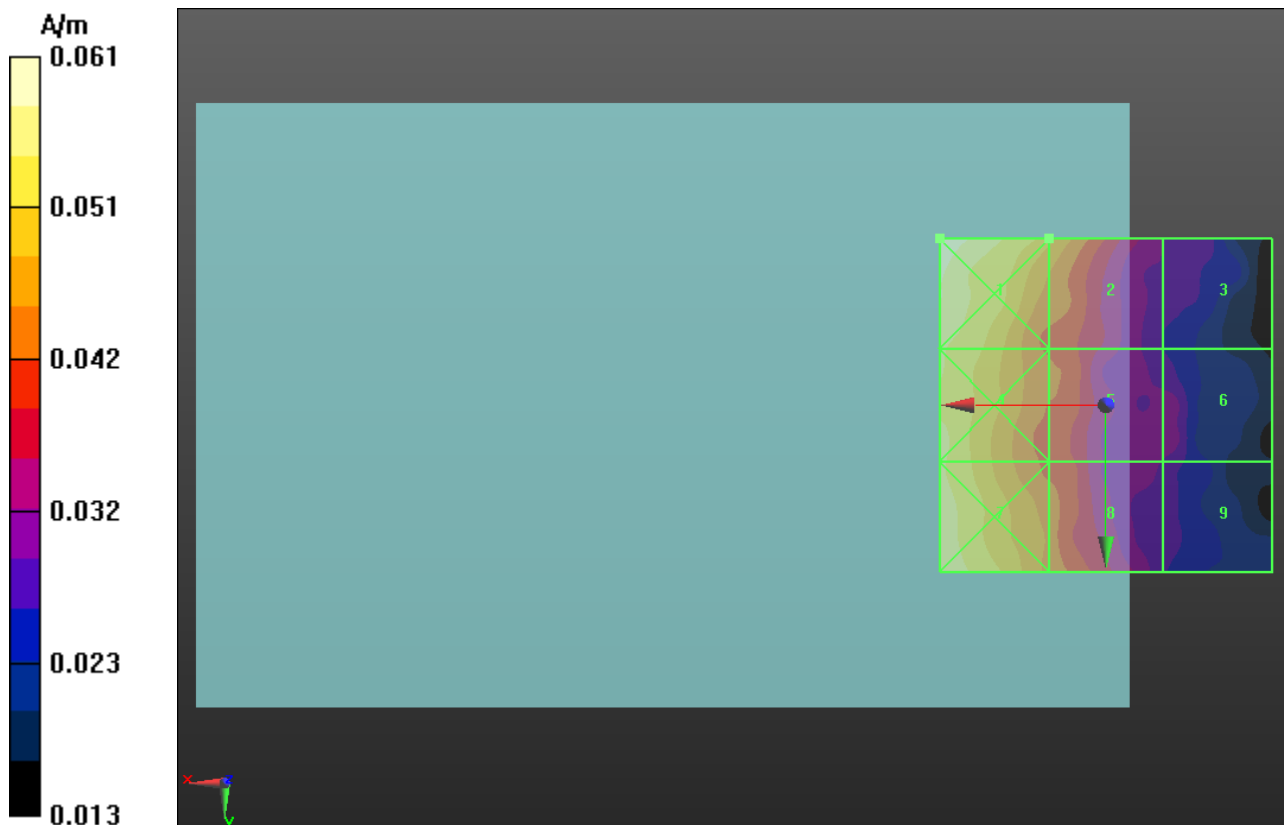
Device Reference Point: 0, 0, -6.3 mm

Reference Value = 0.013 A/m; Power Drift = 0.0034 dB

Hearing Aid Near-Field Category: M4 (AWF -5 dB)

Peak H-field in A/m

| | | |
|---------------------------|---------------------------|---------------------------|
| Grid 1 0.061 M4 | Grid 2 0.049 M4 | Grid 3 0.029 M4 |
| Grid 4 0.056 M4 | Grid 5 0.042 M4 | Grid 6 0.032 M4 |
| Grid 7 0.058 M4 | Grid 8 0.044 M4 | Grid 9 0.029 M4 |



Test Laboratory: UL CCS SAR Lab C

GSM 850

Communication System: GPRS-FDD (TDMA, GMSK, 1 slot); Frequency: 848.8 MHz; Duty Cycle: 1:8.00018

Phantom section: RF Section

DASY4 Configuration:

- Probe: H3DV6 - SN6157; ; Calibrated: 1/30/2012
- Sensor-Surface: (Fix Surface)
- Electronics: DAE3 Sn500; Calibrated: 7/14/2011
- Phantom: HAC Test Arch with AMCC; Type: SD HAC P01 BB
- Measurement SW: DASY52, Version 52.8 (0); SEMCAD X Version 14.4.5 (3634)

H-Field/H ch/Hearing Aid Compatibility Test (101x101x1): Measurement grid: dx=5mm, dy=5mm

Maximum value of peak Total field = 0.043 A/m

Probe Modulation Factor = 2.790

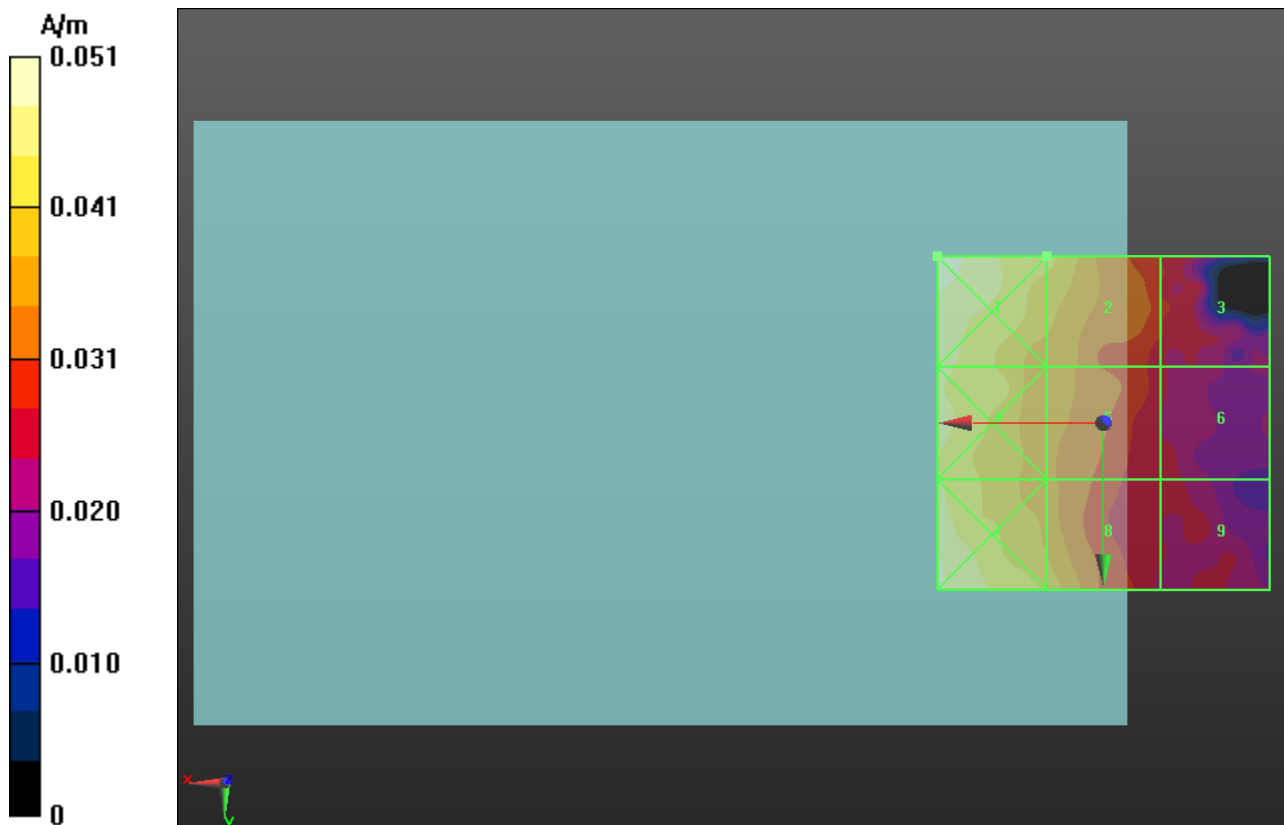
Device Reference Point: 0, 0, -6.3 mm

Reference Value = 0.011 A/m; Power Drift = 0.89 dB

Hearing Aid Near-Field Category: M4 (AWF -5 dB)

Peak H-field in A/m

| | | |
|---------------------------|---------------------------|---------------------------|
| Grid 1 0.051 M4 | Grid 2 0.043 M4 | Grid 3 0.029 M4 |
| Grid 4 0.047 M4 | Grid 5 0.035 M4 | Grid 6 0.026 M4 |
| Grid 7 0.048 M4 | Grid 8 0.040 M4 | Grid 9 0.026 M4 |



Test Laboratory: UL CCS SAR Lab C

GSM 1900

Communication System: GPRS-FDD (TDMA, GMSK, 1 slot); Frequency: 1850.2 MHz; Duty Cycle: 1:8.00018

Phantom section: RF Section

DASY4 Configuration:

- Probe: H3DV6 - SN6157; ; Calibrated: 1/30/2012
- Sensor-Surface: (Fix Surface)
- Electronics: DAE3 Sn500; Calibrated: 7/14/2011
- Phantom: HAC Test Arch with AMCC; Type: SD HAC P01 BB
- Measurement SW: DASY52, Version 52.8 (0); SEMCAD X Version 14.4.5 (3634)

H-Field/L ch/Hearing Aid Compatibility Test (101x101x1): Measurement grid: dx=5mm, dy=5mm

Maximum value of peak Total field = 0.137 A/m

Probe Modulation Factor = 2.840

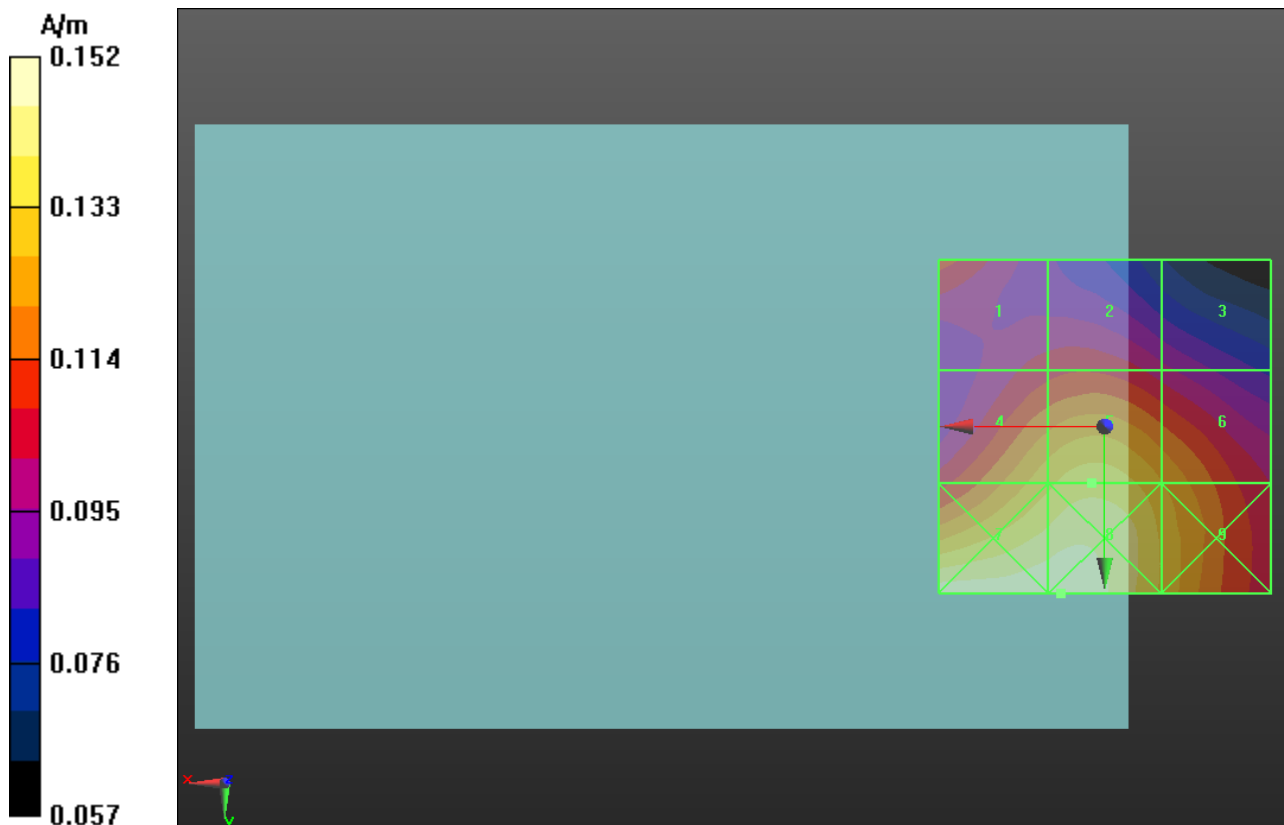
Device Reference Point: 0, 0, -6.3 mm

Reference Value = 0.050 A/m; Power Drift = 0.09 dB

Hearing Aid Near-Field Category: M4 (AWF -5 dB)

Peak H-field in A/m

| | | |
|-----------------|-----------------|-----------------|
| Grid 1 | Grid 2 | Grid 3 |
| 0.111 M4 | 0.107 M4 | 0.098 M4 |
| Grid 4 | Grid 5 | Grid 6 |
| 0.132 M4 | 0.137 M4 | 0.127 M4 |
| Grid 7 | Grid 8 | Grid 9 |
| 0.151 M3 | 0.152 M3 | 0.133 M4 |



Test Laboratory: UL CCS SAR Lab C

GSM 1900

Communication System: GPRS-FDD (TDMA, GMSK, 1 slot); Frequency: 1880 MHz; Duty Cycle: 1:8.00018

Phantom section: RF Section

DASY4 Configuration:

- Probe: H3DV6 - SN6157; ; Calibrated: 1/30/2012
- Sensor-Surface: (Fix Surface)
- Electronics: DAE3 Sn500; Calibrated: 7/14/2011
- Phantom: HAC Test Arch with AMCC; Type: SD HAC P01 BB
- Measurement SW: DASY52, Version 52.8 (0); SEMCAD X Version 14.4.5 (3634)

H-Field/M ch/Hearing Aid Compatibility Test (101x101x1): Measurement grid: dx=5mm, dy=5mm

Maximum value of peak Total field = 0.128 A/m

Probe Modulation Factor = 2.840

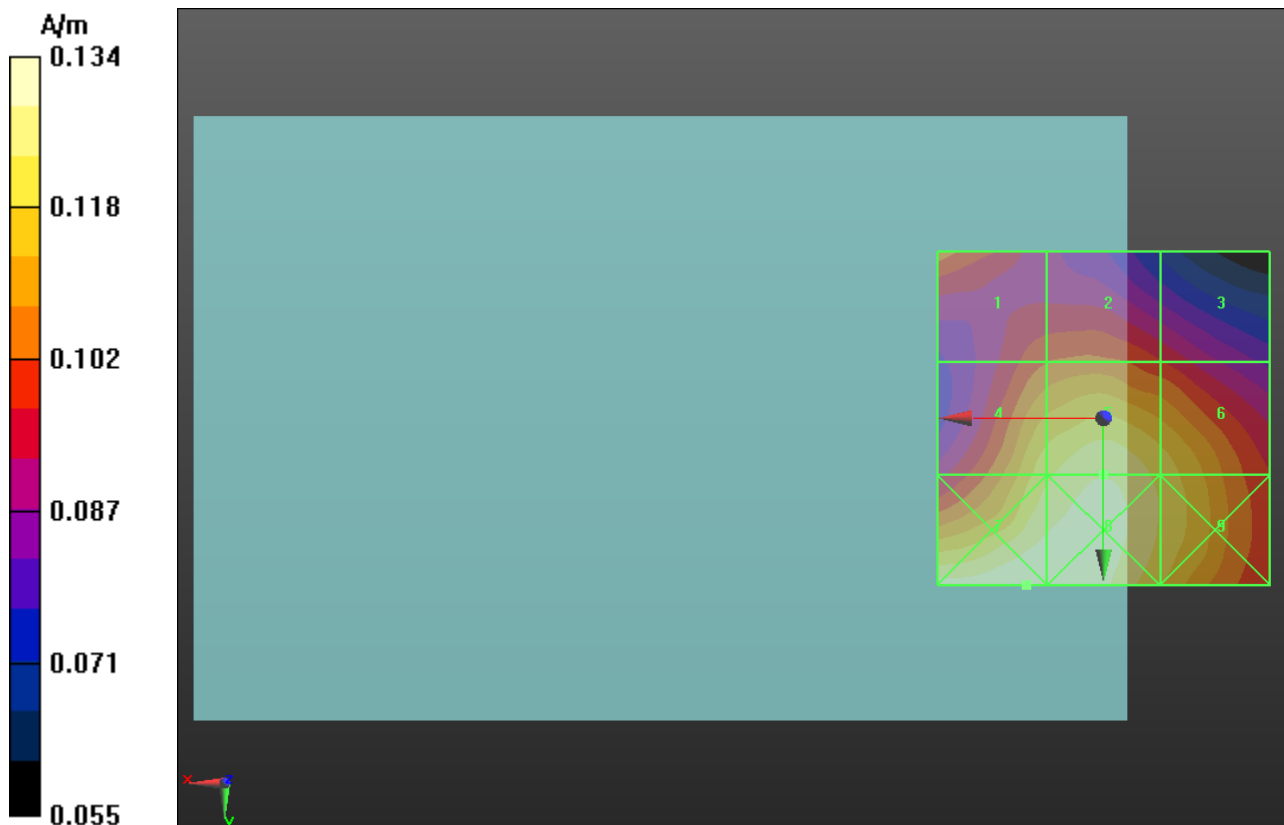
Device Reference Point: 0, 0, -6.3 mm

Reference Value = 0.049 A/m; Power Drift = 0.13 dB

Hearing Aid Near-Field Category: M4 (AWF -5 dB)

Peak H-field in A/m

| | | |
|-----------------|-----------------|-----------------|
| Grid 1 | Grid 2 | Grid 3 |
| 0.107 M4 | 0.104 M4 | 0.098 M4 |
| Grid 4 | Grid 5 | Grid 6 |
| 0.122 M4 | 0.128 M4 | 0.122 M4 |
| Grid 7 | Grid 8 | Grid 9 |
| 0.134 M4 | 0.134 M4 | 0.123 M4 |



Test Laboratory: UL CCS SAR Lab C

GSM 1900

Communication System: GPRS-FDD (TDMA, GMSK, 1 slot); Frequency: 1909.8 MHz; Duty Cycle: 1:8.00018

Phantom section: RF Section

DASY4 Configuration:

- Probe: H3DV6 - SN6157; ; Calibrated: 1/30/2012
- Sensor-Surface: (Fix Surface)
- Electronics: DAE3 Sn500; Calibrated: 7/14/2011
- Phantom: HAC Test Arch with AMCC; Type: SD HAC P01 BB
- Measurement SW: DASY52, Version 52.8 (0); SEMCAD X Version 14.4.5 (3634)

H-Field/H ch/Hearing Aid Compatibility Test (101x101x1): Measurement grid: dx=5mm, dy=5mm

Maximum value of peak Total field = 0.123 A/m

Probe Modulation Factor = 2.840

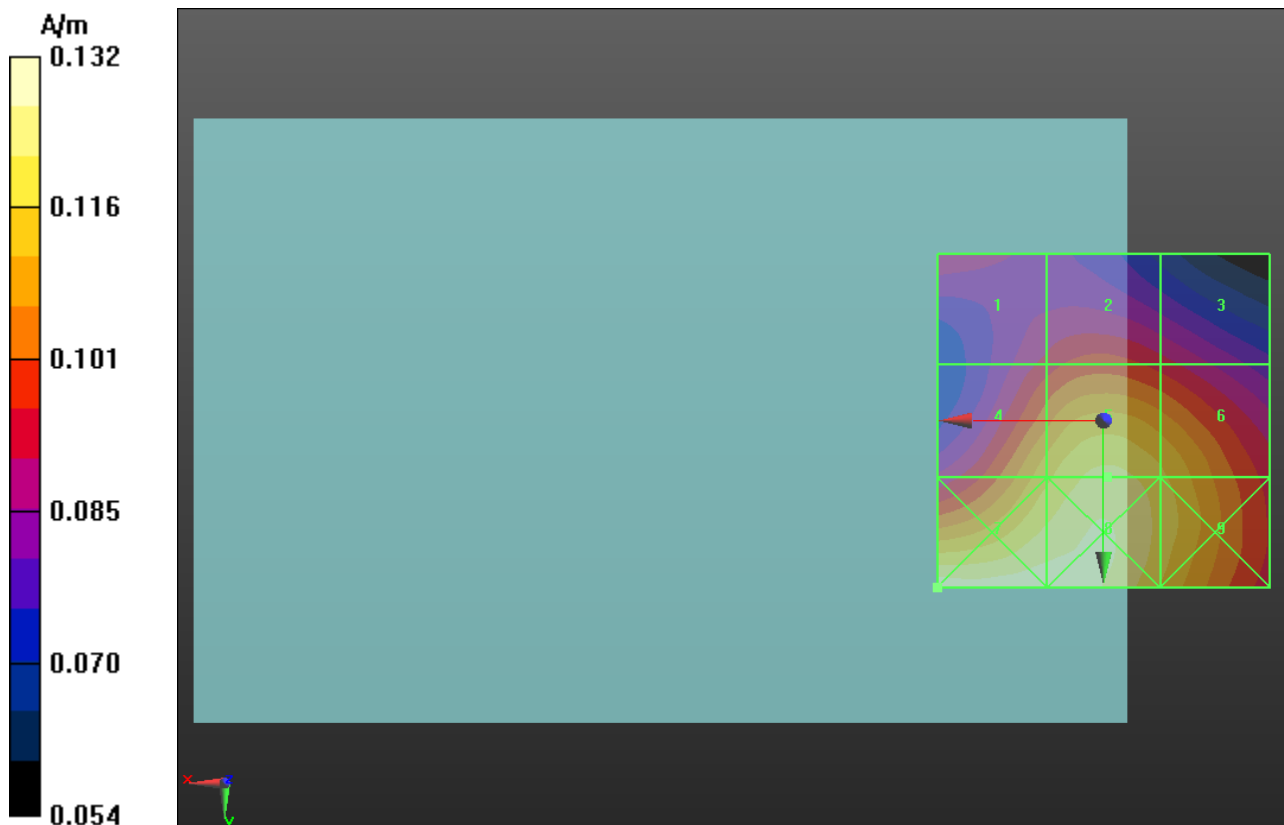
Device Reference Point: 0, 0, -6.3 mm

Reference Value = 0.047 A/m; Power Drift = 0.01 dB

Hearing Aid Near-Field Category: M4 (AWF -5 dB)

Peak H-field in A/m

| | | |
|-----------------|-----------------|-----------------|
| Grid 1 | Grid 2 | Grid 3 |
| 0.093 M4 | 0.098 M4 | 0.093 M4 |
| Grid 4 | Grid 5 | Grid 6 |
| 0.115 M4 | 0.123 M4 | 0.118 M4 |
| Grid 7 | Grid 8 | Grid 9 |
| 0.132 M4 | 0.130 M4 | 0.120 M4 |



Test Laboratory: UL CCS SAR Lab C

W-CDMA band II

Communication System: UMTS-FDD (WCDMA); Frequency: 1852.4 MHz; Duty Cycle: 1:1

Phantom section: RF Section

DASY4 Configuration:

- Probe: H3DV6 - SN6157; ; Calibrated: 1/30/2012
- Sensor-Surface: (Fix Surface)
- Electronics: DAE3 Sn500; Calibrated: 7/14/2011
- Phantom: HAC Test Arch with AMCC; Type: SD HAC P01 BB
- Measurement SW: DASY52, Version 52.8 (0); SEMCAD X Version 14.4.5 (3634)

H-Field, R99 RMC 12.2kbps/L ch/Hearing Aid Compatibility Test (101x101x1):

Measurement grid: dx=5mm, dy=5mm

Maximum value of peak Total field = 0.058 A/m

Probe Modulation Factor = 0.950

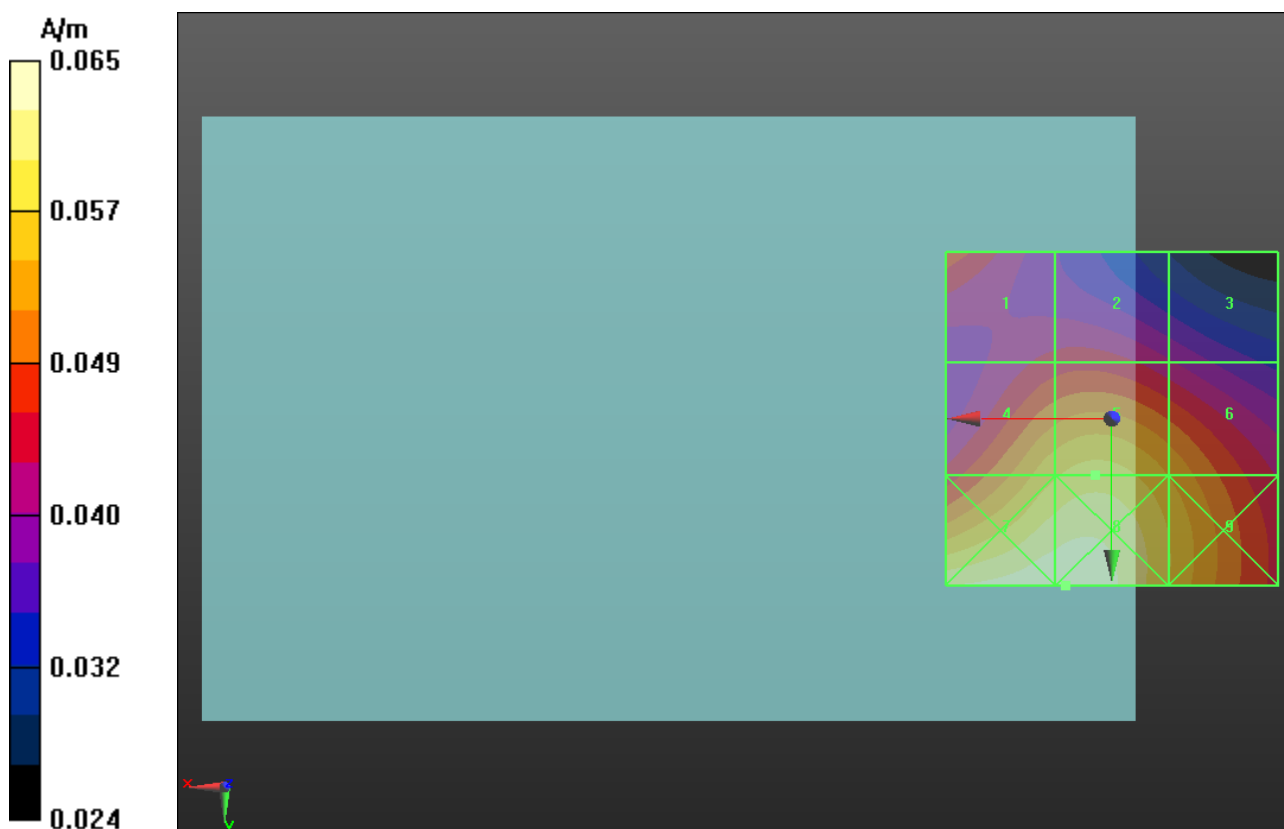
Device Reference Point: 0, 0, -6.3 mm

Reference Value = 0.063 A/m; Power Drift = 0.02 dB

Hearing Aid Near-Field Category: M4 (AWF 0 dB)

Peak H-field in A/m

| | | |
|---------------------------|---------------------------|---------------------------|
| Grid 1 0.048 M4 | Grid 2 0.045 M4 | Grid 3 0.041 M4 |
| Grid 4 0.057 M4 | Grid 5 0.058 M4 | Grid 6 0.054 M4 |
| Grid 7 0.065 M4 | Grid 8 0.065 M4 | Grid 9 0.057 M4 |



Test Laboratory: UL CCS SAR Lab C

W-CDMA band II

Communication System: UMTS-FDD (WCDMA); Frequency: 1880 MHz; Duty Cycle: 1:1

Phantom section: RF Section

DASY4 Configuration:

- Probe: H3DV6 - SN6157; ; Calibrated: 1/30/2012
- Sensor-Surface: (Fix Surface)
- Electronics: DAE3 Sn500; Calibrated: 7/14/2011
- Phantom: HAC Test Arch with AMCC; Type: SD HAC P01 BB
- Measurement SW: DASY52, Version 52.8 (0); SEMCAD X Version 14.4.5 (3634)

H-Field, R99 RMC 12.2kbps/M ch/Hearing Aid Compatibility Test (101x101x1):

Measurement grid: dx=5mm, dy=5mm

Maximum value of peak Total field = 0.057 A/m

Probe Modulation Factor = 0.950

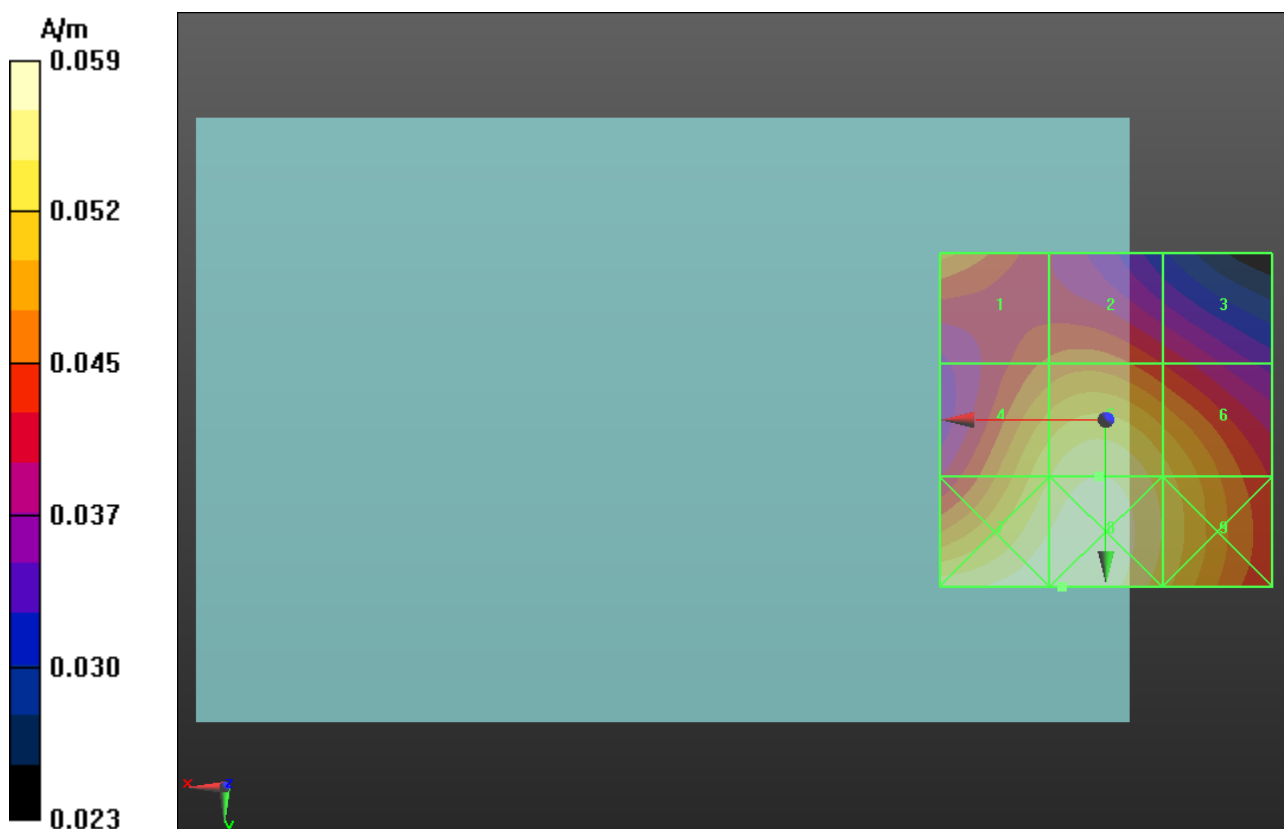
Device Reference Point: 0, 0, -6.3 mm

Reference Value = 0.064 A/m; Power Drift = -0.01 dB

Hearing Aid Near-Field Category: M4 (AWF 0 dB)

Peak H-field in A/m

| | | |
|---------------------------|---------------------------|---------------------------|
| Grid 1 0.048 M4 | Grid 2 0.046 M4 | Grid 3 0.042 M4 |
| Grid 4 0.054 M4 | Grid 5 0.057 M4 | Grid 6 0.053 M4 |
| Grid 7 0.059 M4 | Grid 8 0.059 M4 | Grid 9 0.054 M4 |



Test Laboratory: UL CCS SAR Lab C

W-CDMA band II

Communication System: UMTS-FDD (WCDMA); Frequency: 1907.6 MHz; Duty Cycle: 1:1

Phantom section: RF Section

DASY4 Configuration:

- Probe: H3DV6 - SN6157; ; Calibrated: 1/30/2012
- Sensor-Surface: (Fix Surface)
- Electronics: DAE3 Sn500; Calibrated: 7/14/2011
- Phantom: HAC Test Arch with AMCC; Type: SD HAC P01 BB
- Measurement SW: DASY52, Version 52.8 (0); SEMCAD X Version 14.4.5 (3634)

H-Field, R99 RMC 12.2kbps/H ch/Hearing Aid Compatibility Test (101x101x1):

Measurement grid: dx=5mm, dy=5mm

Maximum value of peak Total field = 0.048 A/m

Probe Modulation Factor = 0.950

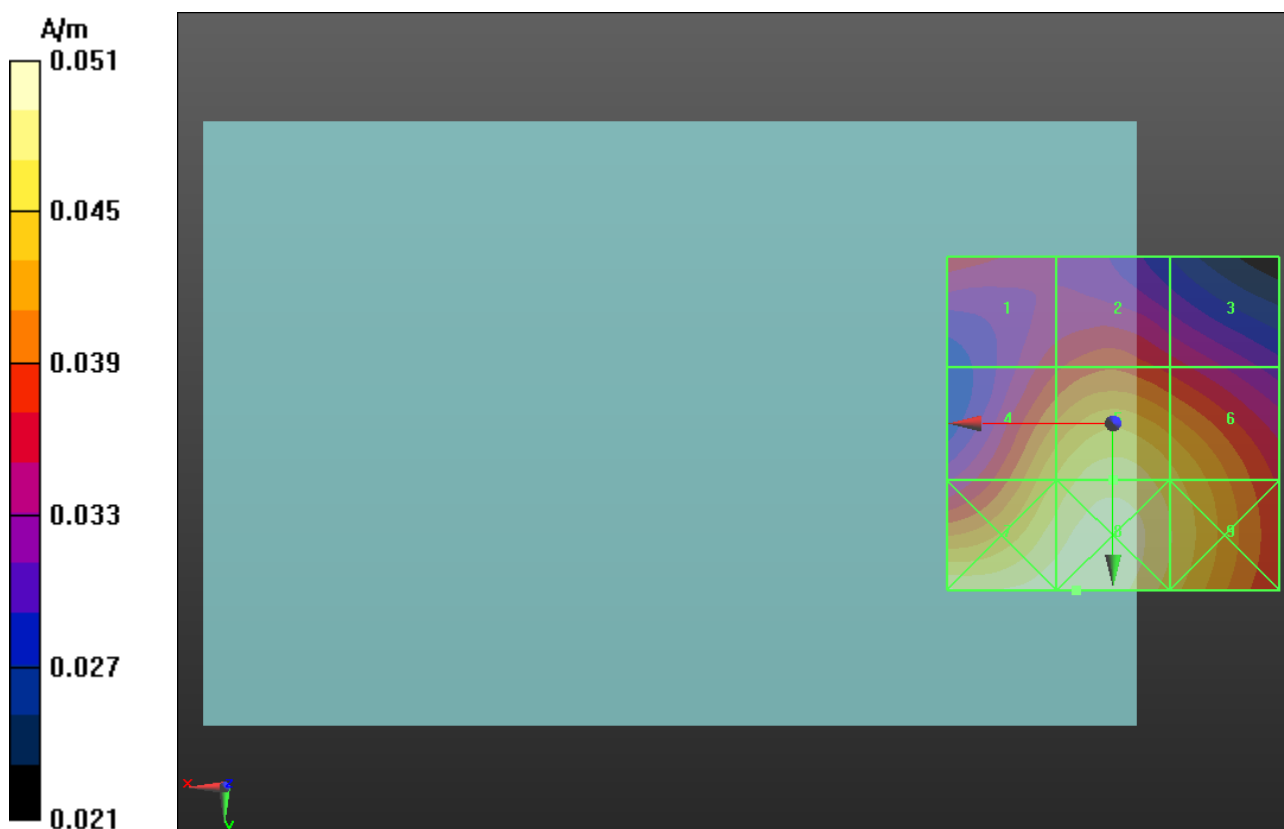
Device Reference Point: 0, 0, -6.3 mm

Reference Value = 0.055 A/m; Power Drift = -0.02 dB

Hearing Aid Near-Field Category: M4 (AWF 0 dB)

Peak H-field in A/m

| | | |
|---------------------------|---------------------------|---------------------------|
| Grid 1 0.037 M4 | Grid 2 0.039 M4 | Grid 3 0.036 M4 |
| Grid 4 0.045 M4 | Grid 5 0.048 M4 | Grid 6 0.046 M4 |
| Grid 7 0.050 M4 | Grid 8 0.051 M4 | Grid 9 0.047 M4 |



Test Laboratory: UL CCS SAR Lab C

CDMA BC0

Communication System: CDMA2000; Frequency: 824.7 MHz; Duty Cycle: 1:1

Phantom section: RF Section

DASY4 Configuration:

- Probe: H3DV6 - SN6157; ; Calibrated: 1/30/2012
- Sensor-Surface: (Fix Surface)
- Electronics: DAE3 Sn500; Calibrated: 7/14/2011
- Phantom: HAC Test Arch with AMCC; Type: SD HAC P01 BB
- Measurement SW: DASY52, Version 52.8 (0); SEMCAD X Version 14.4.5 (3634)

H-Field, RC3 SO55/L ch/Hearing Aid Compatibility Test (101x101x1): Measurement grid:

dx=5mm, dy=5mm

Maximum value of peak Total field = 0.021 A/m

Probe Modulation Factor = 0.960

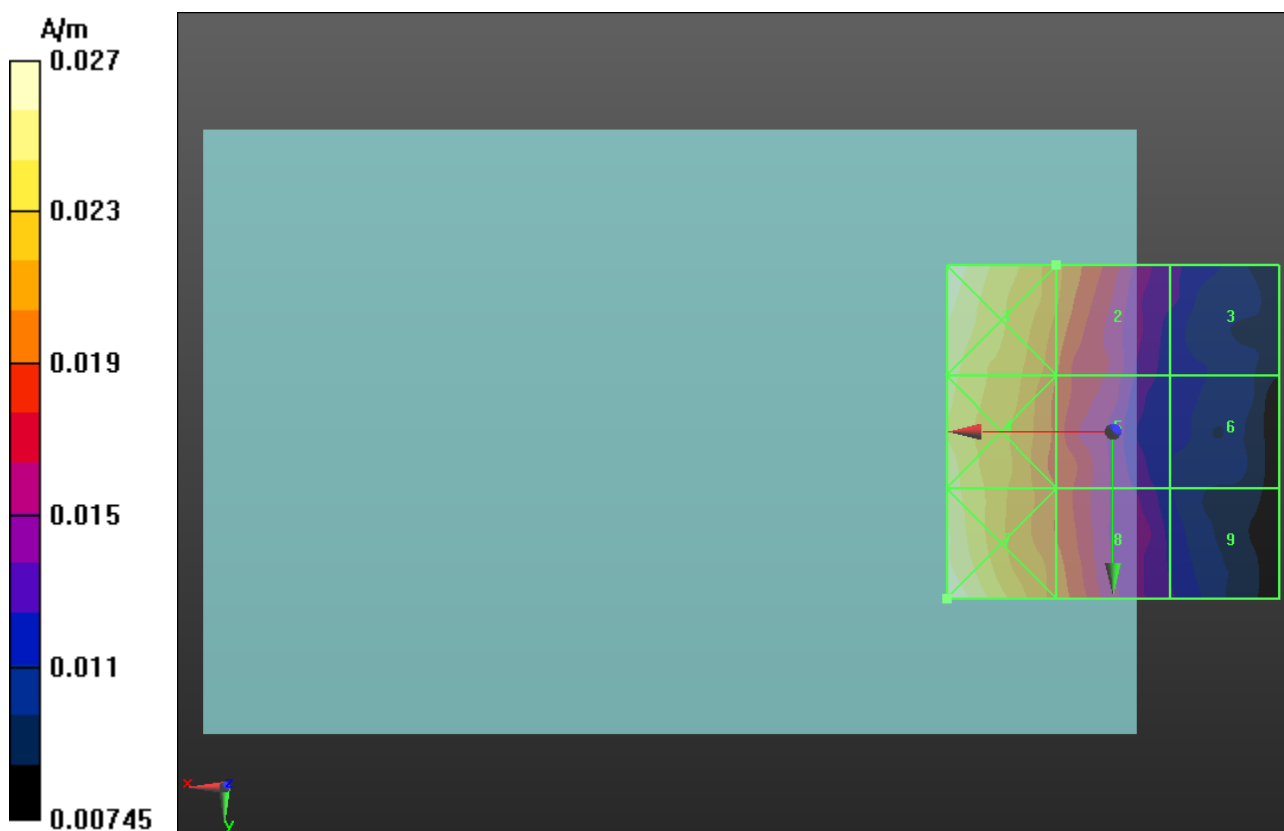
Device Reference Point: 0, 0, -6.3 mm

Reference Value = 0.016 A/m; Power Drift = -0.52 dB

Hearing Aid Near-Field Category: M4 (AWF 0 dB)

Peak H-field in A/m

| | | |
|---------------------------|---------------------------|---------------------------|
| Grid 1 0.027 M4 | Grid 2 0.021 M4 | Grid 3 0.013 M4 |
| Grid 4 0.025 M4 | Grid 5 0.019 M4 | Grid 6 0.012 M4 |
| Grid 7 0.027 M4 | Grid 8 0.020 M4 | Grid 9 0.013 M4 |



Test Laboratory: UL CCS SAR Lab C

CDMA BC0

Communication System: CDMA2000; Frequency: 836.52 MHz; Duty Cycle: 1:1

Phantom section: RF Section

DASY4 Configuration:

- Probe: H3DV6 - SN6157; ; Calibrated: 1/30/2012
- Sensor-Surface: (Fix Surface)
- Electronics: DAE3 Sn500; Calibrated: 7/14/2011
- Phantom: HAC Test Arch with AMCC; Type: SD HAC P01 BB
- Measurement SW: DASY52, Version 52.8 (0); SEMCAD X Version 14.4.5 (3634)

H-Field, RC3 SO55/M ch/Hearing Aid Compatibility Test (101x101x1): Measurement grid:

dx=5mm, dy=5mm

Maximum value of peak Total field = 0.021 A/m

Probe Modulation Factor = 0.960

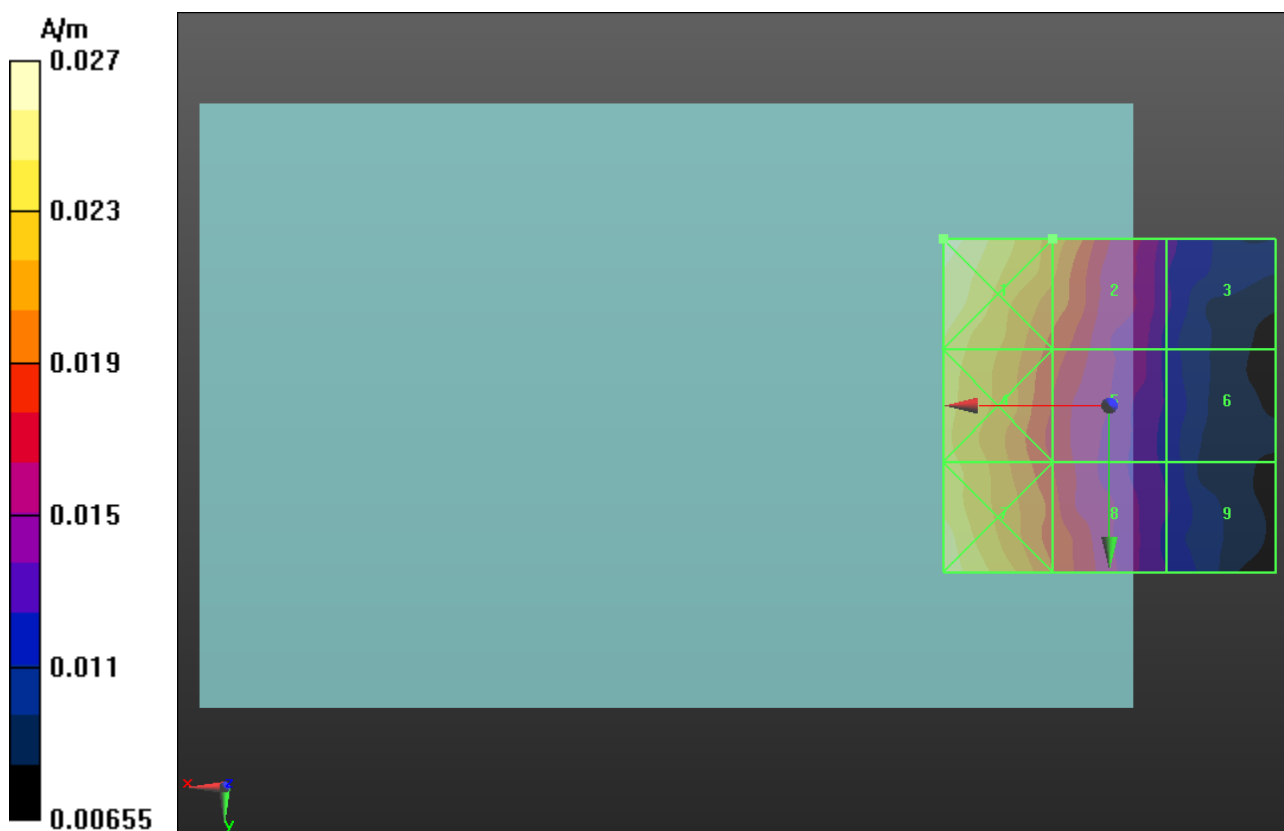
Device Reference Point: 0, 0, -6.3 mm

Reference Value = 0.015 A/m; Power Drift = -0.33 dB

Hearing Aid Near-Field Category: M4 (AWF 0 dB)

Peak H-field in A/m

| | | |
|---------------------------|---------------------------|---------------------------|
| Grid 1 0.027 M4 | Grid 2 0.021 M4 | Grid 3 0.013 M4 |
| Grid 4 0.024 M4 | Grid 5 0.018 M4 | Grid 6 0.012 M4 |
| Grid 7 0.025 M4 | Grid 8 0.019 M4 | Grid 9 0.012 M4 |



Test Laboratory: UL CCS SAR Lab C

CDMA BC0

Communication System: CDMA2000; Frequency: 848.31 MHz; Duty Cycle: 1:1

Phantom section: RF Section

DASY4 Configuration:

- Probe: H3DV6 - SN6157; ; Calibrated: 1/30/2012
- Sensor-Surface: (Fix Surface)
- Electronics: DAE3 Sn500; Calibrated: 7/14/2011
- Phantom: HAC Test Arch with AMCC; Type: SD HAC P01 BB
- Measurement SW: DASY52, Version 52.8 (0); SEMCAD X Version 14.4.5 (3634)

H-Field, RC3 SO55/H ch/Hearing Aid Compatibility Test (101x101x1): Measurement grid:

dx=5mm, dy=5mm

Maximum value of peak Total field = 0.019 A/m

Probe Modulation Factor = 0.960

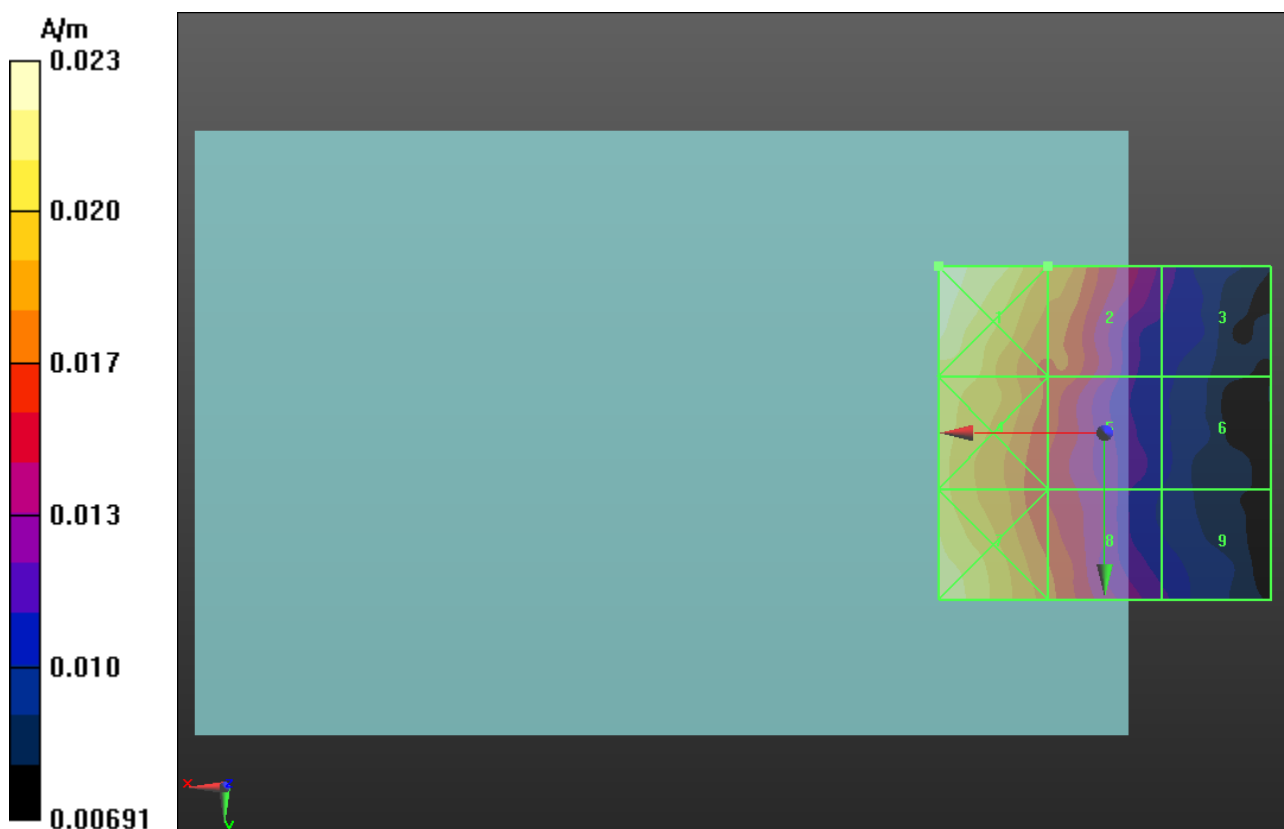
Device Reference Point: 0, 0, -6.3 mm

Reference Value = 0.014 A/m; Power Drift = 0.0019 dB

Hearing Aid Near-Field Category: M4 (AWF 0 dB)

Peak H-field in A/m

| | | |
|---------------------------|---------------------------|---------------------------|
| Grid 1 0.023 M4 | Grid 2 0.019 M4 | Grid 3 0.012 M4 |
| Grid 4 0.020 M4 | Grid 5 0.016 M4 | Grid 6 0.011 M4 |
| Grid 7 0.022 M4 | Grid 8 0.017 M4 | Grid 9 0.012 M4 |



Test Laboratory: UL CCS SAR Lab C

CDMA BC1

Communication System: CDMA2000; Frequency: 1851.25 MHz; Duty Cycle: 1:1

Phantom section: RF Section

DASY4 Configuration:

- Probe: H3DV6 - SN6157; ; Calibrated: 1/30/2012
- Sensor-Surface: (Fix Surface)
- Electronics: DAE3 Sn500; Calibrated: 7/14/2011
- Phantom: HAC Test Arch with AMCC; Type: SD HAC P01 BB
- Measurement SW: DASY52, Version 52.8 (0); SEMCAD X Version 14.4.5 (3634)

H-Field, RC3 SO55/L ch/Hearing Aid Compatibility Test (101x101x1): Measurement grid:

dx=5mm, dy=5mm

Maximum value of peak Total field = 0.063 A/m

Probe Modulation Factor = 0.980

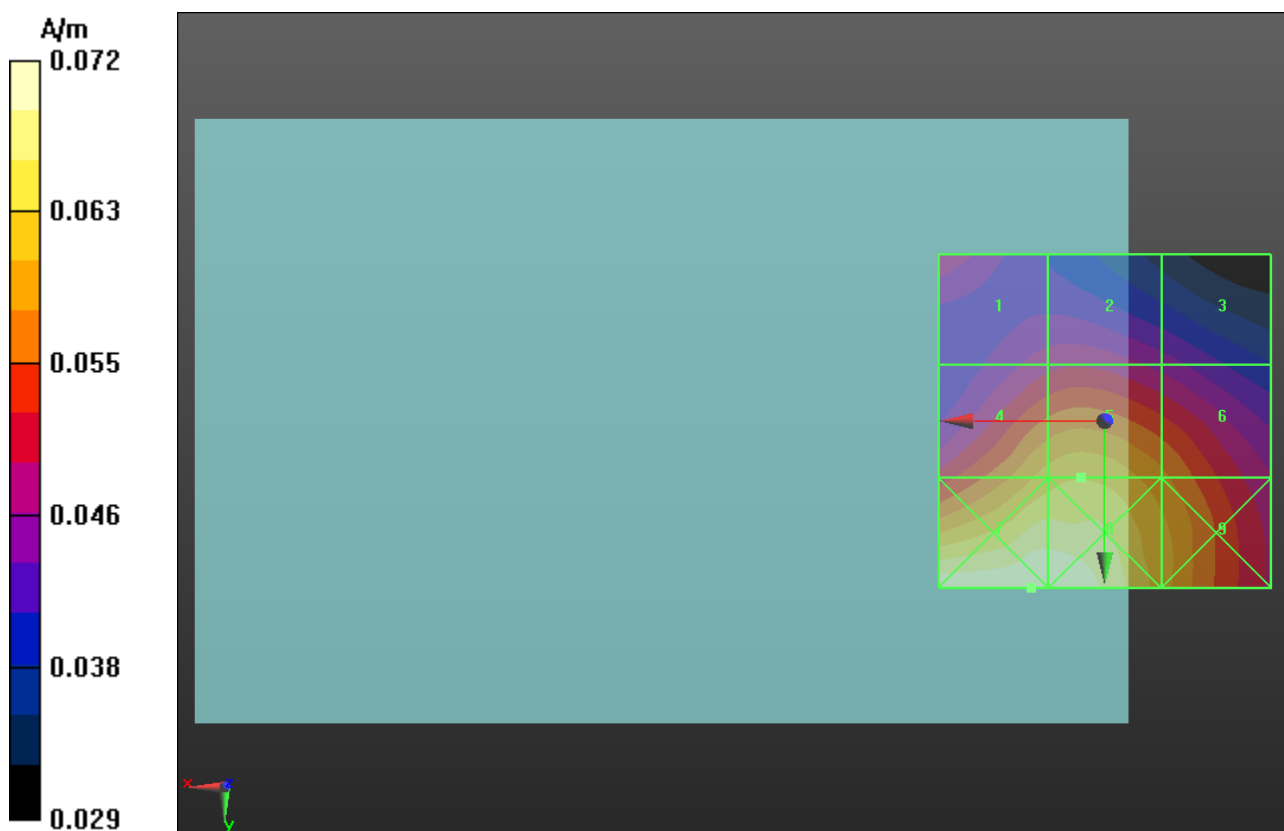
Device Reference Point: 0, 0, -6.3 mm

Reference Value = 0.068 A/m; Power Drift = 0.02 dB

Hearing Aid Near-Field Category: M4 (AWF 0 dB)

Peak H-field in A/m

| | | |
|-----------------|-----------------|-----------------|
| Grid 1 | Grid 2 | Grid 3 |
| 0.050 M4 | 0.049 M4 | 0.045 M4 |
| Grid 4 | Grid 5 | Grid 6 |
| 0.062 M4 | 0.063 M4 | 0.059 M4 |
| Grid 7 | Grid 8 | Grid 9 |
| 0.072 M4 | 0.072 M4 | 0.062 M4 |



Test Laboratory: UL CCS SAR Lab C

CDMA BC1

Communication System: CDMA2000; Frequency: 1880 MHz; Duty Cycle: 1:1

Phantom section: RF Section

DASY4 Configuration:

- Probe: H3DV6 - SN6157; ; Calibrated: 1/30/2012
- Sensor-Surface: (Fix Surface)
- Electronics: DAE3 Sn500; Calibrated: 7/14/2011
- Phantom: HAC Test Arch with AMCC; Type: SD HAC P01 BB
- Measurement SW: DASY52, Version 52.8 (0); SEMCAD X Version 14.4.5 (3634)

H-Field, RC3 SO55/M ch/Hearing Aid Compatibility Test (101x101x1): Measurement grid:

dx=5mm, dy=5mm

Maximum value of peak Total field = 0.060 A/m

Probe Modulation Factor = 0.980

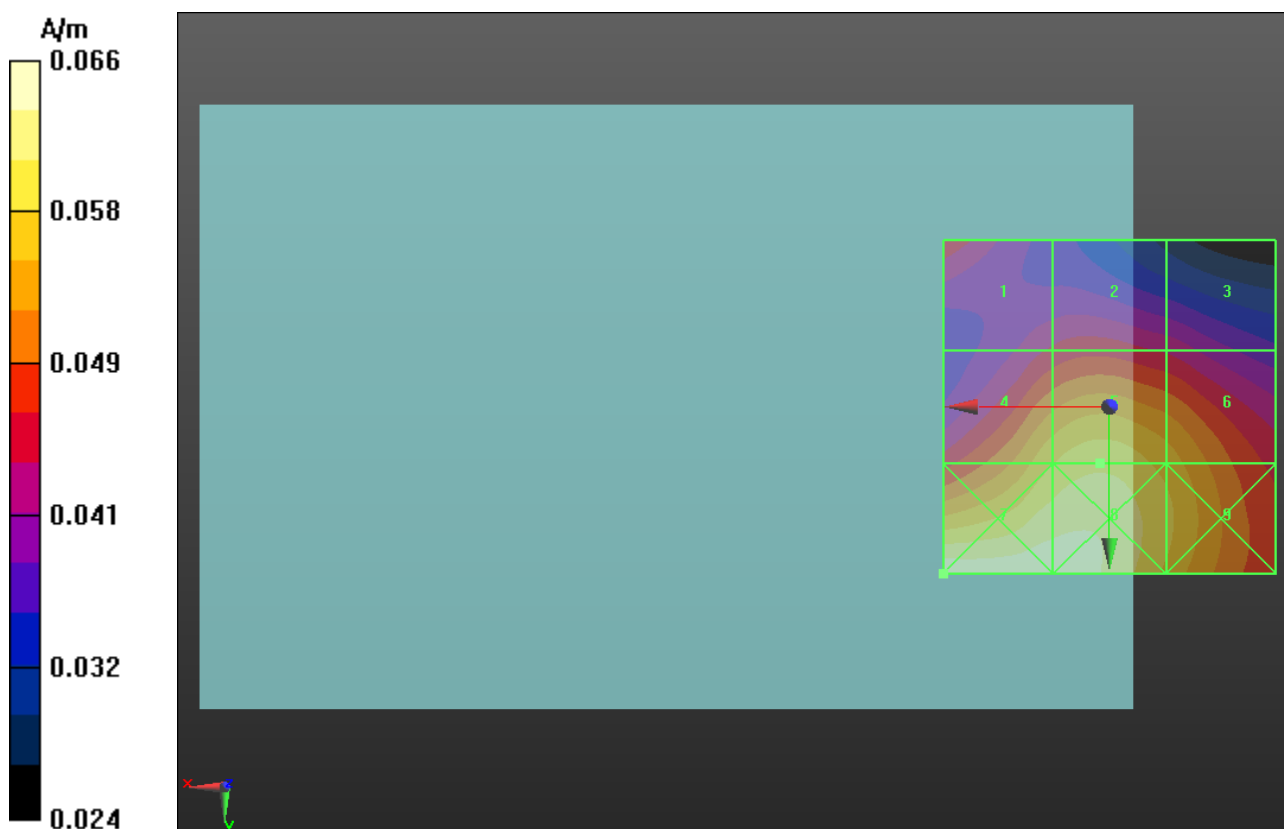
Device Reference Point: 0, 0, -6.3 mm

Reference Value = 0.065 A/m; Power Drift = 0.11 dB

Hearing Aid Near-Field Category: M4 (AWF 0 dB)

Peak H-field in A/m

| | | |
|-----------------|-----------------|-----------------|
| Grid 1 | Grid 2 | Grid 3 |
| 0.047 M4 | 0.046 M4 | 0.043 M4 |
| Grid 4 | Grid 5 | Grid 6 |
| 0.058 M4 | 0.060 M4 | 0.056 M4 |
| Grid 7 | Grid 8 | Grid 9 |
| 0.066 M4 | 0.065 M4 | 0.058 M4 |



Test Laboratory: UL CCS SAR Lab C

CDMA BC1

Communication System: CDMA2000; Frequency: 1908.75 MHz; Duty Cycle: 1:1

Phantom section: RF Section

DASY4 Configuration:

- Probe: H3DV6 - SN6157; ; Calibrated: 1/30/2012
- Sensor-Surface: (Fix Surface)
- Electronics: DAE3 Sn500; Calibrated: 7/14/2011
- Phantom: HAC Test Arch with AMCC; Type: SD HAC P01 BB
- Measurement SW: DASY52, Version 52.8 (0); SEMCAD X Version 14.4.5 (3634)

H-Field, RC3 SO55/H ch/Hearing Aid Compatibility Test (101x101x1): Measurement grid:

dx=5mm, dy=5mm

Maximum value of peak Total field = 0.053 A/m

Probe Modulation Factor = 0.980

Device Reference Point: 0, 0, -6.3 mm

Reference Value = 0.057 A/m; Power Drift = -0.04 dB

Hearing Aid Near-Field Category: M4 (AWF 0 dB)

Peak H-field in A/m

| | | |
|---------------------------|---------------------------|---------------------------|
| Grid 1 0.037 M4 | Grid 2 0.039 M4 | Grid 3 0.037 M4 |
| Grid 4 0.050 M4 | Grid 5 0.053 M4 | Grid 6 0.050 M4 |
| Grid 7 0.061 M4 | Grid 8 0.058 M4 | Grid 9 0.052 M4 |

