

20120426_SystemPerformanceCheck-D1900V2 SN 5d043

Frequency: 1900 MHz; Duty Cycle: 1:1; Room Ambient Temperature: 24.0°C; Liquid Temperature: 23.0°C
 Medium parameters used: $f = 1900$ MHz; $\sigma = 1.518$ mho/m; $\epsilon_r = 52.922$; $\rho = 1000$ kg/m³
 DASY5 Configuration:

- Electronics: DAE3 Sn500; Calibrated: 7/14/2011
- Probe: EX3DV4 - SN3773; ConvF(7.11, 7.11, 7.11); Calibrated: 3/14/2012
- Sensor-Surface: 2.5mm (Mechanical Surface Detection)
- Phantom: ELI v5.0 (A); Type: QDOVA001BB; Serial: 1120

Body/Pin=100 mW/Area Scan (7x7x1): Measurement grid: dx=15mm, dy=15mm

Maximum value of SAR (measured) = 5.337 mW/g

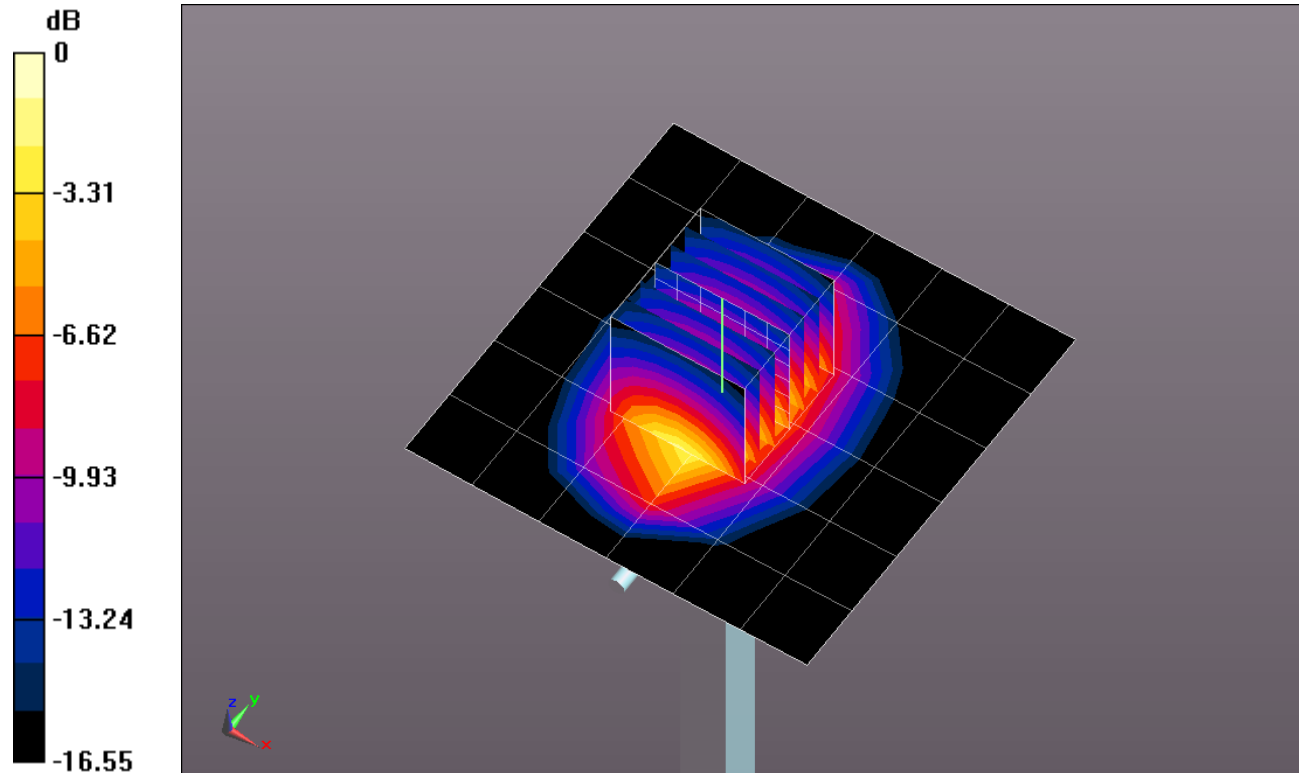
Body/Pin=100 mW/Zoom Scan (7x7x7)/Cube 0: Measurement grid: dx=5mm, dy=5mm, dz=5mm

Reference Value = 60.444 V/m; Power Drift = -0.11 dB

Peak SAR (extrapolated) = 7.5450

SAR(1 g) = 4.2 mW/g; SAR(10 g) = 2.21 mW/g

Maximum value of SAR (measured) = 5.656 mW/g



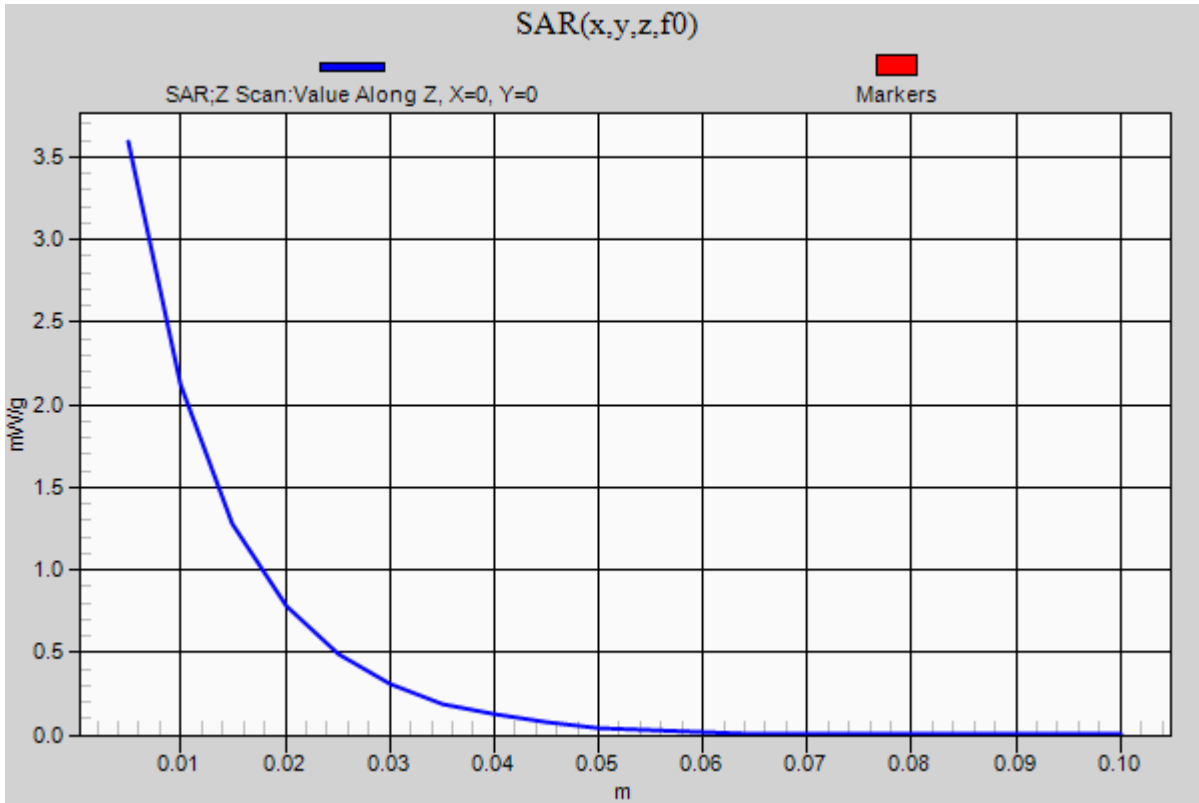
0 dB = 5.660mW/g = 15.06 dB mW/g

20120426_SystemPerformanceCheck-D1900V2 SN 5d043

Frequency: 1900 MHz; Duty Cycle: 1:1

Body/Pin=100 mW/Z Scan (1x1x21): Measurement grid: dx=20mm, dy=20mm, dz=5mm

Maximum value of SAR (measured) = 3.592 mW/g



20120427_SystemPerformanceCheck-D1900V2 SN 5d043

Frequency: 1900 MHz; Duty Cycle: 1:1; Room Ambient Temperature: 24.0°C; Liquid Temperature: 23.0°C
 Medium parameters used: $f = 1900 \text{ MHz}$; $\sigma = 1.445 \text{ mho/m}$; $\epsilon_r = 41.185$; $\rho = 1000 \text{ kg/m}^3$
 DASY5 Configuration:

- Electronics: DAE3 Sn500; Calibrated: 7/14/2011
- Probe: EX3DV4 - SN3773; ConvF(7.51, 7.51, 7.51); Calibrated: 3/14/2012
- Sensor-Surface: 2.5mm (Mechanical Surface Detection)
- Phantom: SAM; Type: QD000P40CD; Serial: 1632

Head/Pin=100 mW/Area Scan (7x7x1): Measurement grid: dx=15mm, dy=15mm

Maximum value of SAR (measured) = 4.243 mW/g

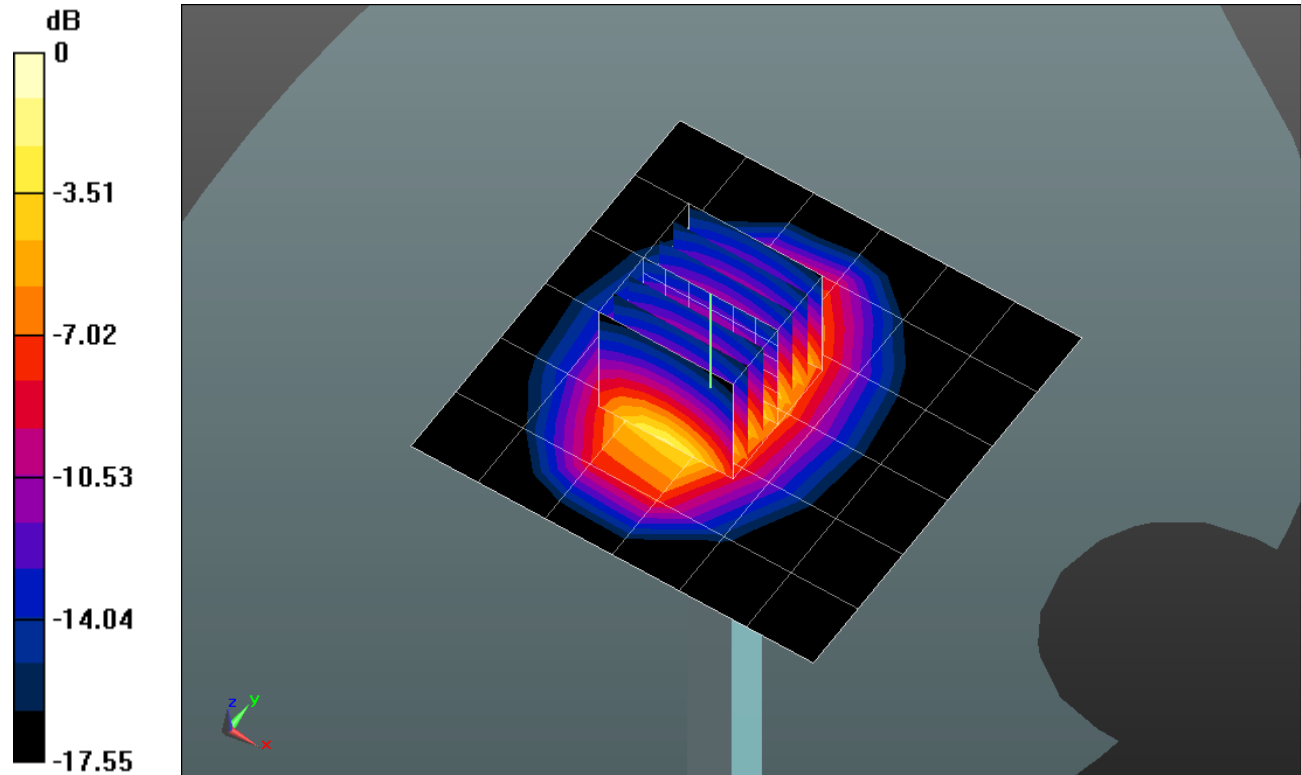
Head/Pin=100 mW/Zoom Scan (7x7x7)/Cube 0: Measurement grid: dx=5mm, dy=5mm, dz=5mm

Reference Value = 62.414 V/m; Power Drift = 0.05 dB

Peak SAR (extrapolated) = 7.4480

SAR(1 g) = 4.11 mW/g; SAR(10 g) = 2.13 mW/g

Maximum value of SAR (measured) = 5.554 mW/g



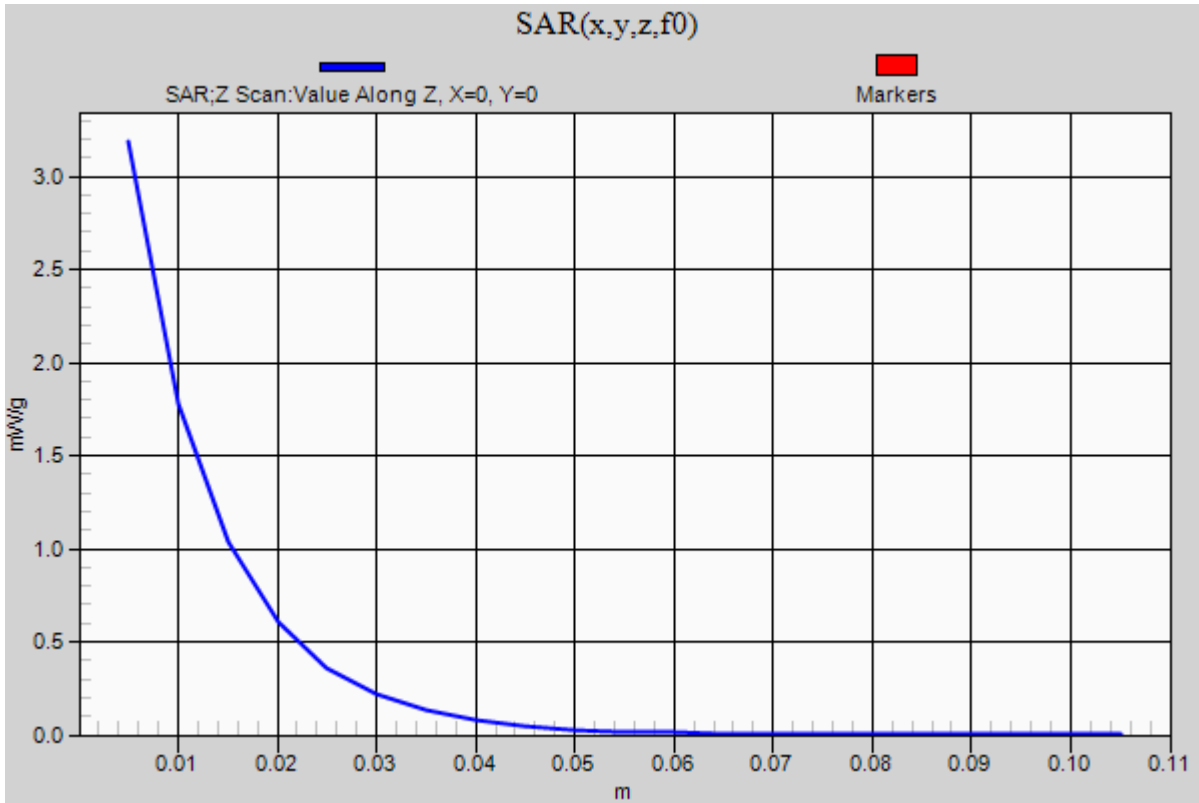
0 dB = 5.550mW/g = 14.89 dB mW/g

20120427_SystemPerformanceCheck-D1900V2 SN 5d043

Frequency: 1900 MHz; Duty Cycle: 1:1

Head/Pin=100 mW/Z Scan (1x1x21): Measurement grid: dx=20mm, dy=20mm, dz=5mm

Maximum value of SAR (measured) = 3.185 mW/g



20120428_SystemPerformanceCheck-D835V2 SN 4d002

Frequency: 835 MHz; Duty Cycle: 1:1; Room Ambient Temperature: 24.0°C; Liquid Temperature: 23.0°C
 Medium parameters used: $f = 835 \text{ MHz}$; $\sigma = 0.901 \text{ mho/m}$; $\epsilon_r = 42.681$; $\rho = 1000 \text{ kg/m}^3$

DASY5 Configuration:

- Electronics: DAE3 Sn500; Calibrated: 7/14/2011
- Probe: EX3DV4 - SN3773; ConvF(8.79, 8.79, 8.79); Calibrated: 3/14/2012
- Sensor-Surface: 2.5mm (Mechanical Surface Detection)
- Phantom: SAM; Type: QD000P40CD; Serial: 1632

Head/Pin=100 mW/Area Scan (7x7x1): Measurement grid: $dx=15\text{mm}$, $dy=15\text{mm}$

Maximum value of SAR (measured) = 1.087 mW/g

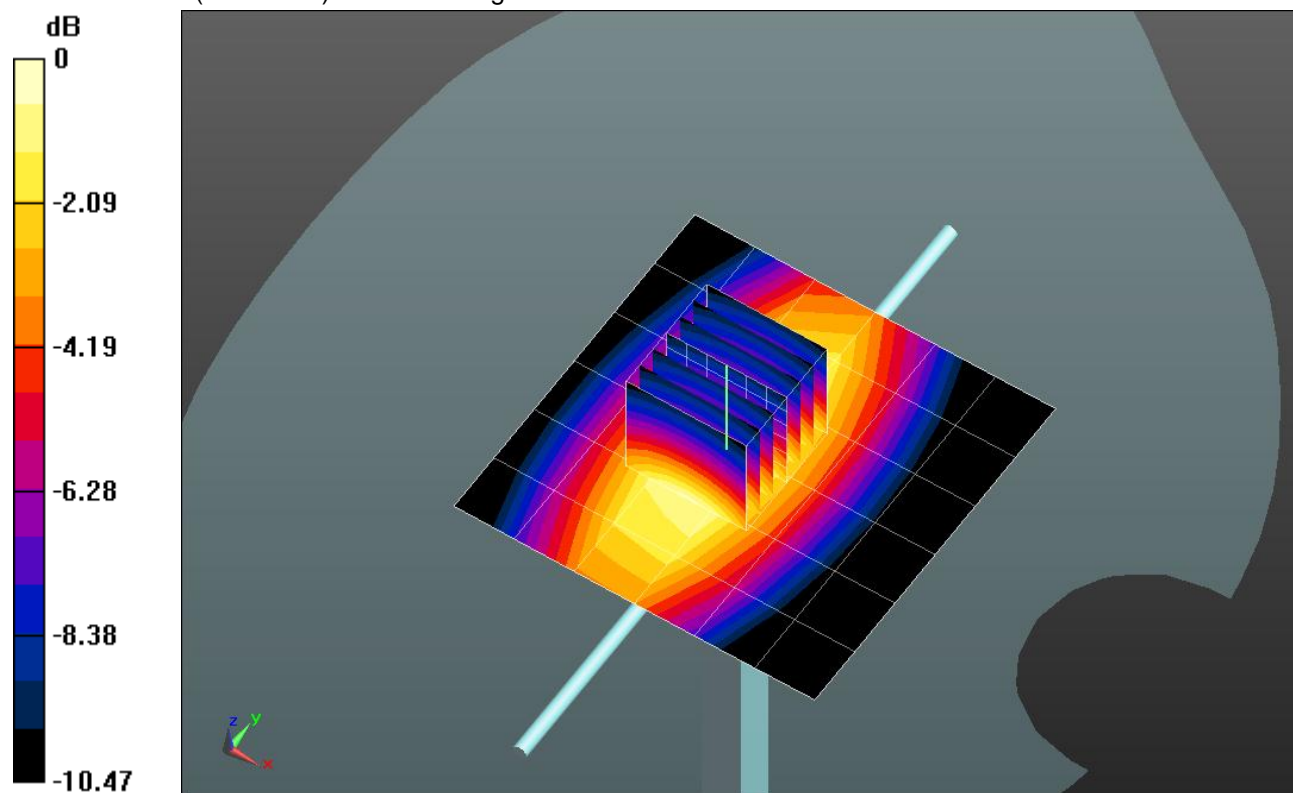
Head/Pin=100 mW/Zoom Scan (7x7x7)/Cube 0: Measurement grid: $dx=5\text{mm}$, $dy=5\text{mm}$, $dz=5\text{mm}$

Reference Value = 36.754 V/m; Power Drift = -0.007 dB

Peak SAR (extrapolated) = 1.4710

SAR(1 g) = 0.979 mW/g; SAR(10 g) = 0.641 mW/g

Maximum value of SAR (measured) = 1.194 mW/g



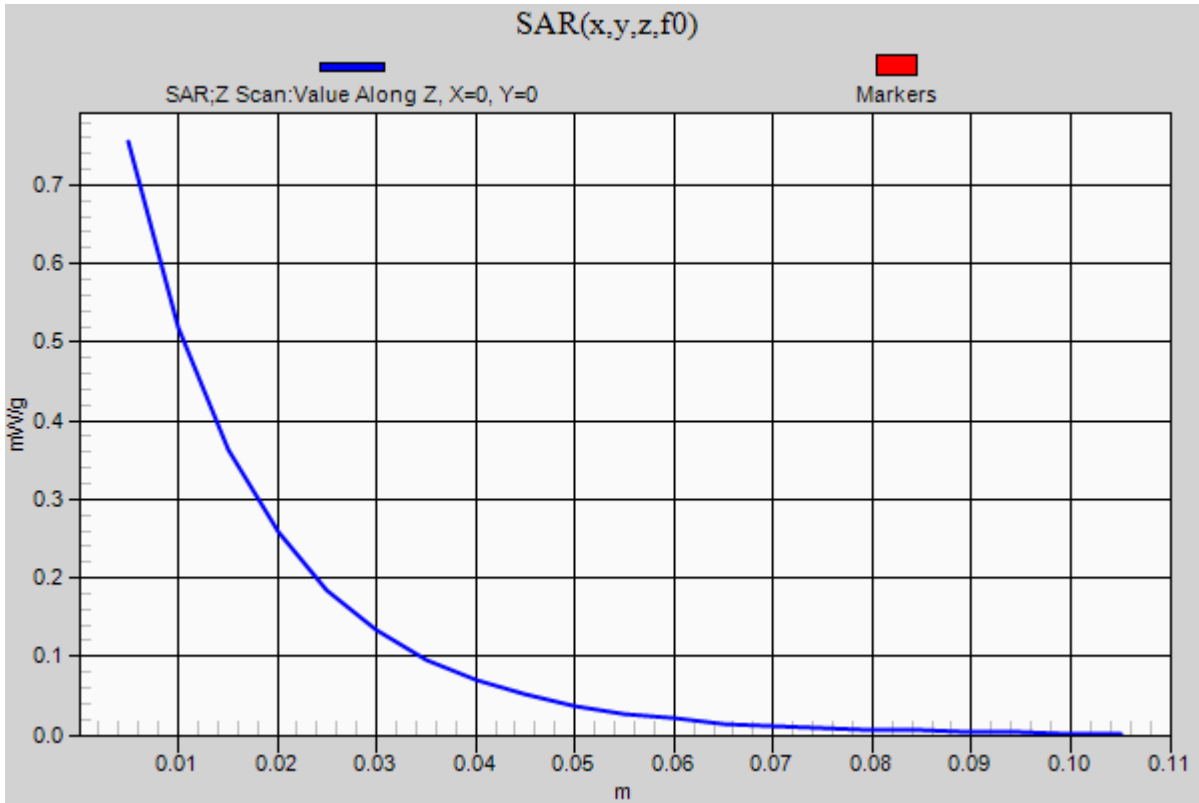
0 dB = 1.190mW/g = 1.51 dB mW/g

20120428_SystemPerformanceCheck-D835V2 SN 4d002

Frequency: 835 MHz; Duty Cycle: 1:1

Head/Pin=100 mW/Z Scan (1x1x21): Measurement grid: dx=20mm, dy=20mm, dz=5mm

Maximum value of SAR (measured) = 0.755 mW/g



20120430_SystemPerformanceCheck-D835V2 SN 4d002

Frequency: 835 MHz; Duty Cycle: 1:1; Room Ambient Temperature: 24.0°C; Liquid Temperature: 23.0°C
 Medium parameters used: $f = 835 \text{ MHz}$; $\sigma = 0.967 \text{ mho/m}$; $\epsilon_r = 54.148$; $\rho = 1000 \text{ kg/m}^3$

DASY5 Configuration:

- Electronics: DAE3 Sn500; Calibrated: 7/14/2011
- Probe: EX3DV4 - SN3773; ConvF(8.74, 8.74, 8.74); Calibrated: 3/14/2012
- Sensor-Surface: 2.5mm (Mechanical Surface Detection)
- Phantom: ELI v5.0 (A); Type: QDOVA001BB; Serial: 1120

Body/Pin=100 mW/Area Scan (7x7x1): Measurement grid: $dx=15\text{mm}$, $dy=15\text{mm}$

Maximum value of SAR (measured) = 1.093 mW/g

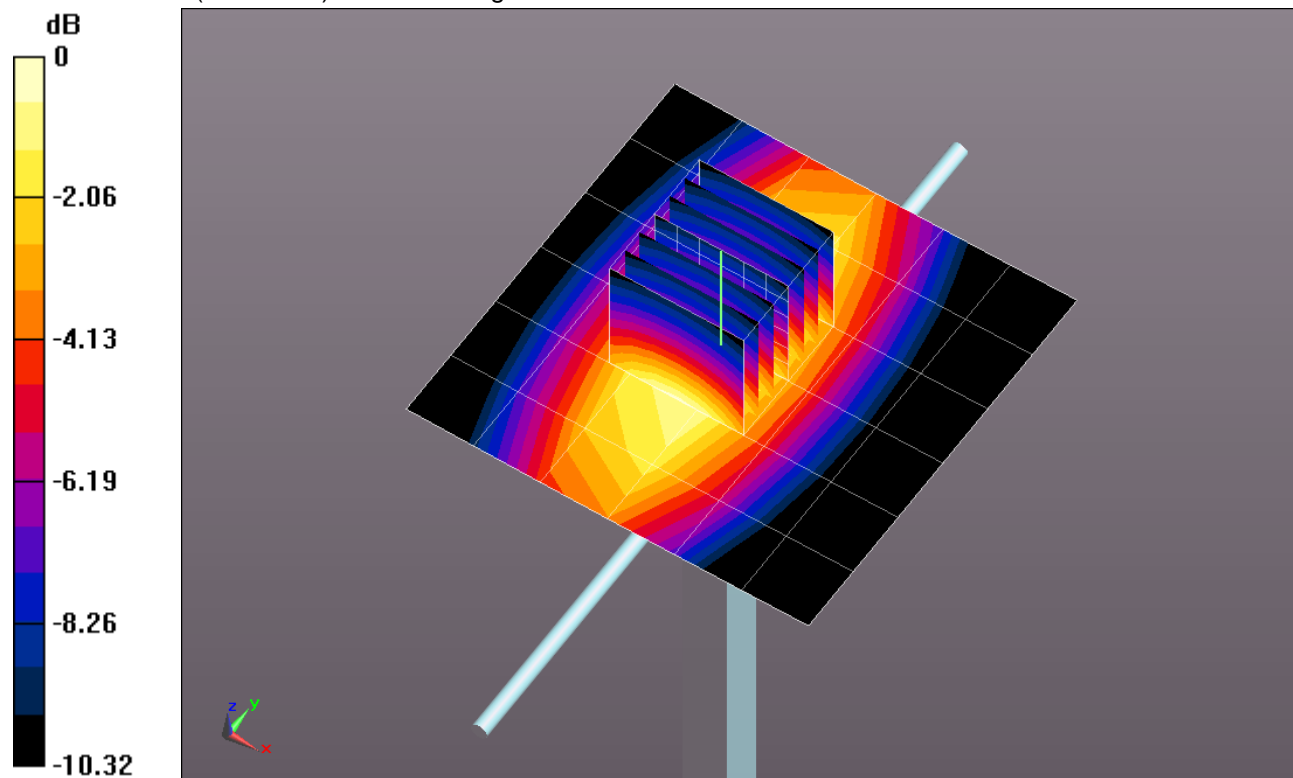
Body/Pin=100 mW/Zoom Scan (7x7x7)/Cube 0: Measurement grid: $dx=5\text{mm}$, $dy=5\text{mm}$, $dz=5\text{mm}$

Reference Value = 35.427 V/m; Power Drift = -0.0077 dB

Peak SAR (extrapolated) = 1.4430

SAR(1 g) = 0.967 mW/g; SAR(10 g) = 0.634 mW/g

Maximum value of SAR (measured) = 1.177 mW/g



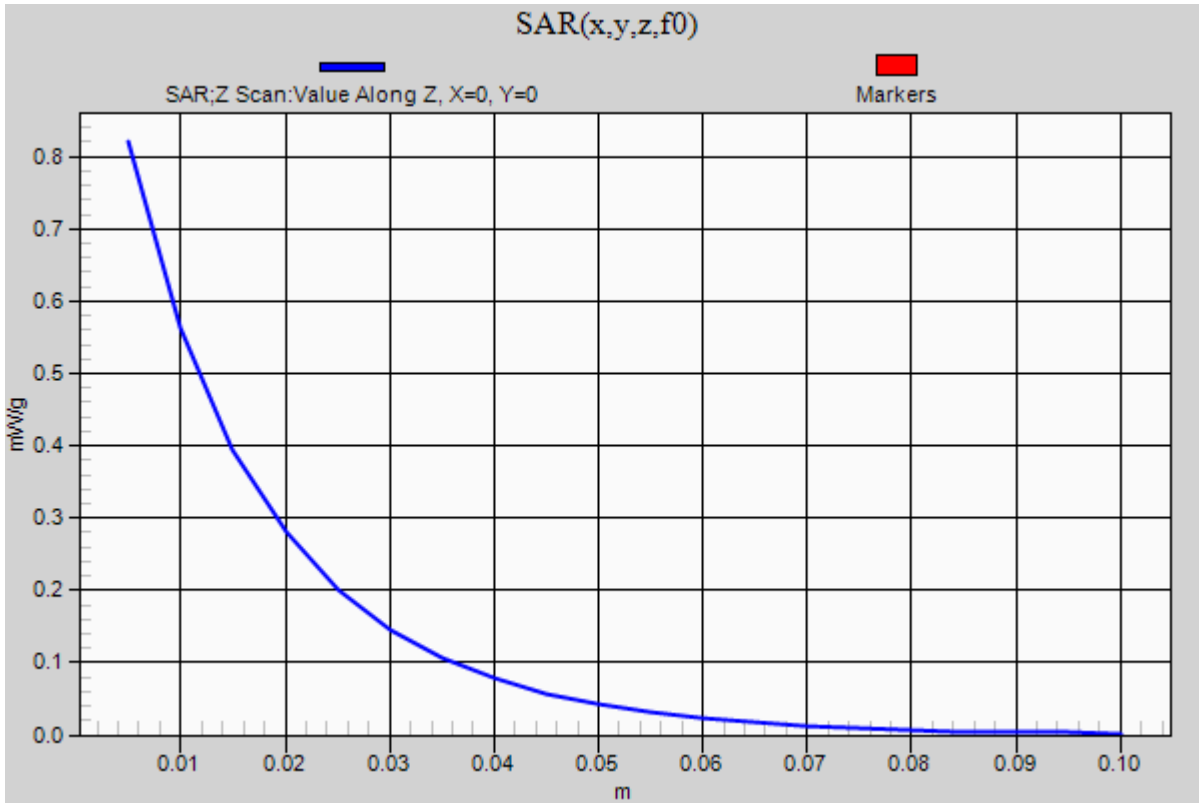
0 dB = 1.180mW/g = 1.44 dB mW/g

20120430_SystemPerformanceCheck-D835V2 SN 4d002

Frequency: 835 MHz; Duty Cycle: 1:1

Body/Pin=100 mW/Z Scan (1x1x21): Measurement grid: dx=20mm, dy=20mm, dz=5mm

Maximum value of SAR (measured) = 0.820 mW/g



20120501_SystemPerformanceCheck-D2450V2 SN 748

Frequency: 2450 MHz; Duty Cycle: 1:1; Room Ambient Temperature: 24.0°C; Liquid Temperature: 23.0°C
 Medium parameters used: $f = 2450$ MHz; $\sigma = 1.782$ mho/m; $\epsilon_r = 39.241$; $\rho = 1000$ kg/m³

DASY5 Configuration:

- Electronics: DAE3 Sn500; Calibrated: 7/14/2011
- Probe: EX3DV4 - SN3773; ConvF(6.67, 6.67, 6.67); Calibrated: 3/14/2012
- Sensor-Surface: 2.5mm (Mechanical Surface Detection)
- Phantom: SAM; Type: QD000P40CD; Serial: 1632

Head/Pin=100 mW/Area Scan (7x7x1): Measurement grid: dx=15mm, dy=15mm

Maximum value of SAR (measured) = 4.753 mW/g

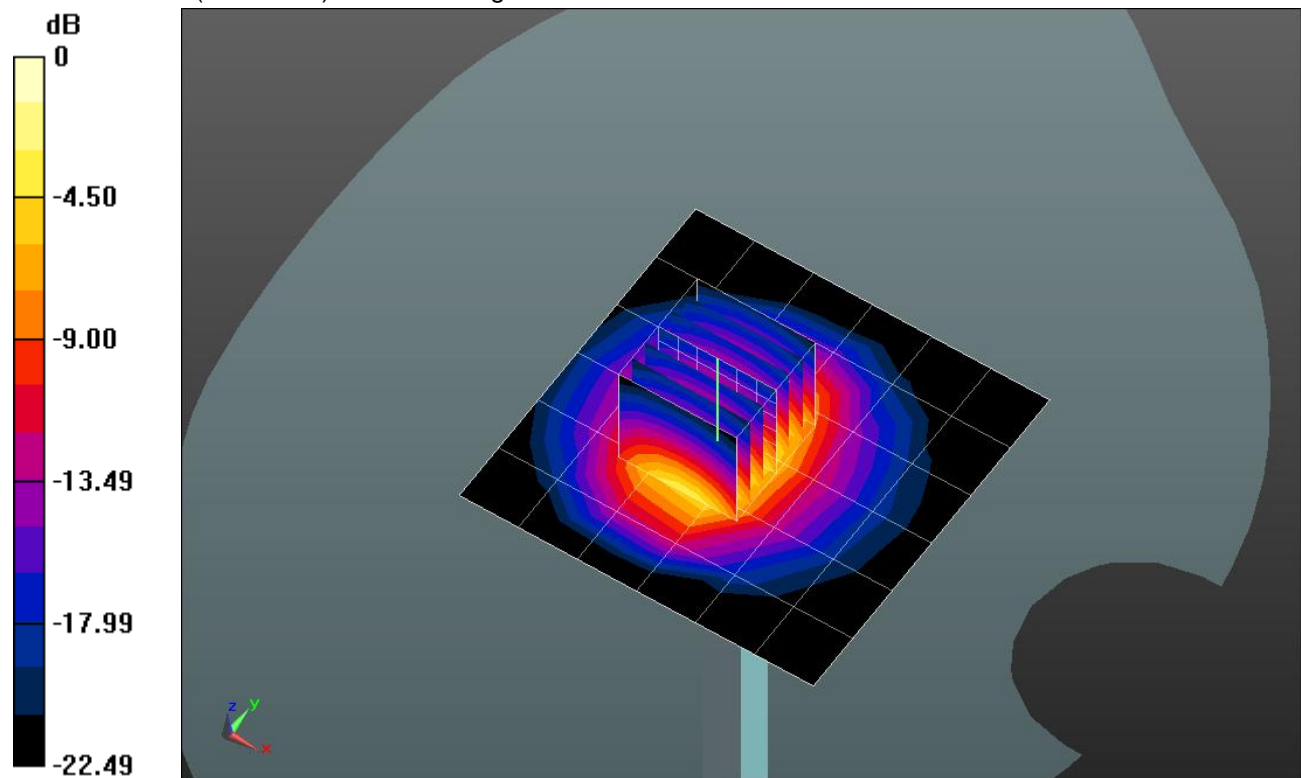
Head/Pin=100 mW/Zoom Scan (7x7x7)/Cube 0: Measurement grid: dx=5mm, dy=5mm, dz=5mm

Reference Value = 62.400 V/m; Power Drift = 0.04 dB

Peak SAR (extrapolated) = 10.2710

SAR(1 g) = 4.94 mW/g; SAR(10 g) = 2.27 mW/g

Maximum value of SAR (measured) = 7.018 mW/g



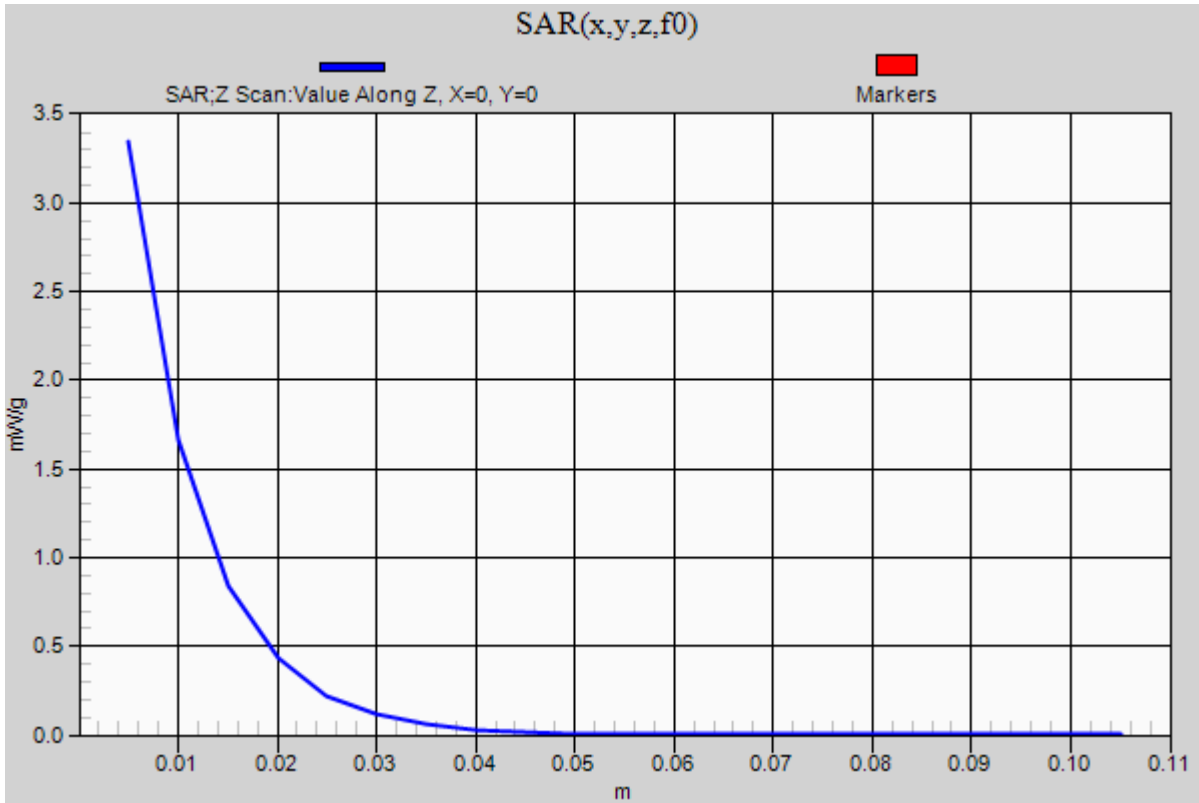
0 dB = 7.020mW/g = 16.93 dB mW/g

20120501_SystemPerformanceCheck-D2450V2 SN 748

Frequency: 2450 MHz; Duty Cycle: 1:1

Head/Pin=100 mW/Z Scan (1x1x21): Measurement grid: dx=20mm, dy=20mm, dz=5mm

Maximum value of SAR (measured) = 3.346 mW/g



20120501_SystemPerformanceCheck-D2450V2 SN 748

Frequency: 2450 MHz; Duty Cycle: 1:1; Room Ambient Temperature: 24.0°C; Liquid Temperature: 23.0°C
 Medium parameters used: $f = 2450$ MHz; $\sigma = 1.972$ mho/m; $\epsilon_r = 50.622$; $\rho = 1000$ kg/m³
 DASY5 Configuration:

- Electronics: DAE3 Sn500; Calibrated: 7/14/2011
- Probe: EX3DV4 - SN3773; ConvF(6.67, 6.67, 6.67); Calibrated: 3/14/2012
- Sensor-Surface: 2.5mm (Mechanical Surface Detection)
- Phantom: ELI v5.0 (A); Type: QDOVA001BB; Serial: 1117

Body/Pin=100 mW/Area Scan (7x7x1): Measurement grid: dx=15mm, dy=15mm

Maximum value of SAR (measured) = 6.214 mW/g

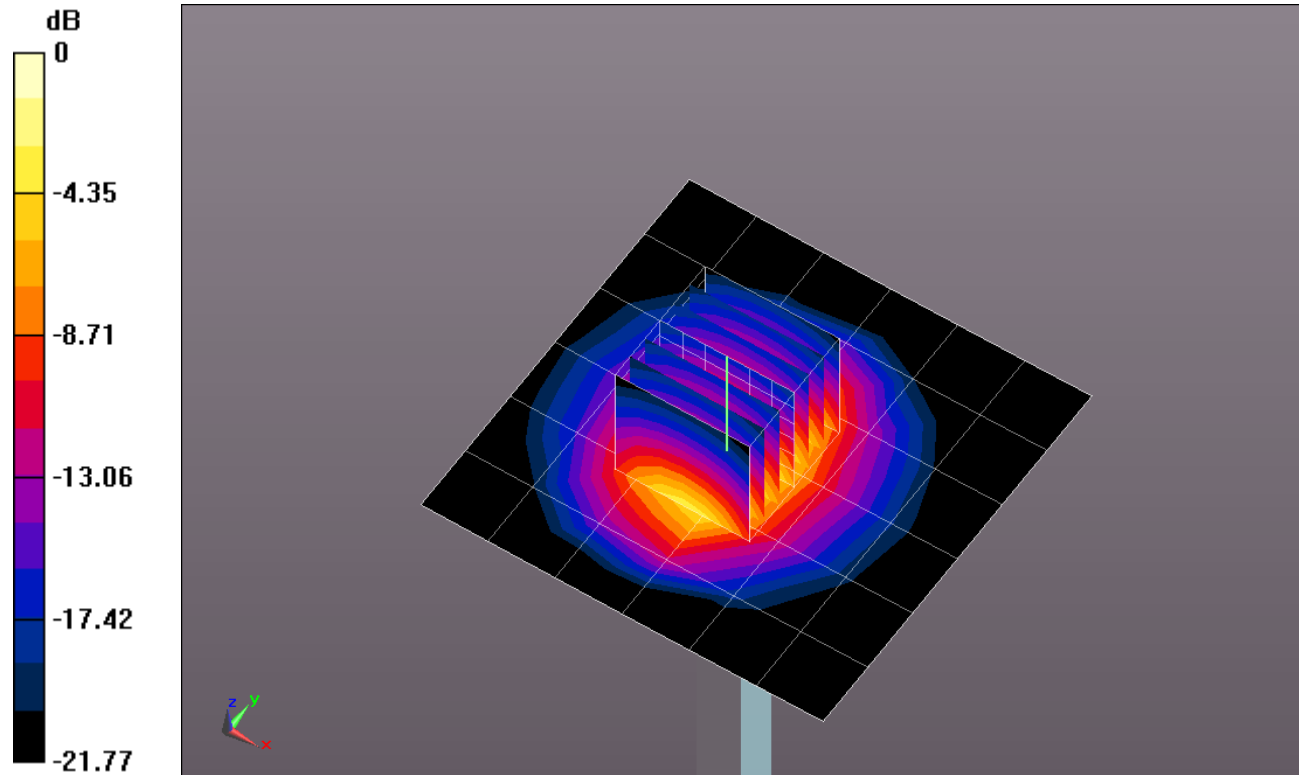
Body/Pin=100 mW/Zoom Scan (7x7x7)/Cube 0: Measurement grid: dx=5mm, dy=5mm, dz=5mm

Reference Value = 60.390 V/m; Power Drift = -0.04 dB

Peak SAR (extrapolated) = 10.5780

SAR(1 g) = 5.09 mW/g; SAR(10 g) = 2.36 mW/g

Maximum value of SAR (measured) = 7.237 mW/g



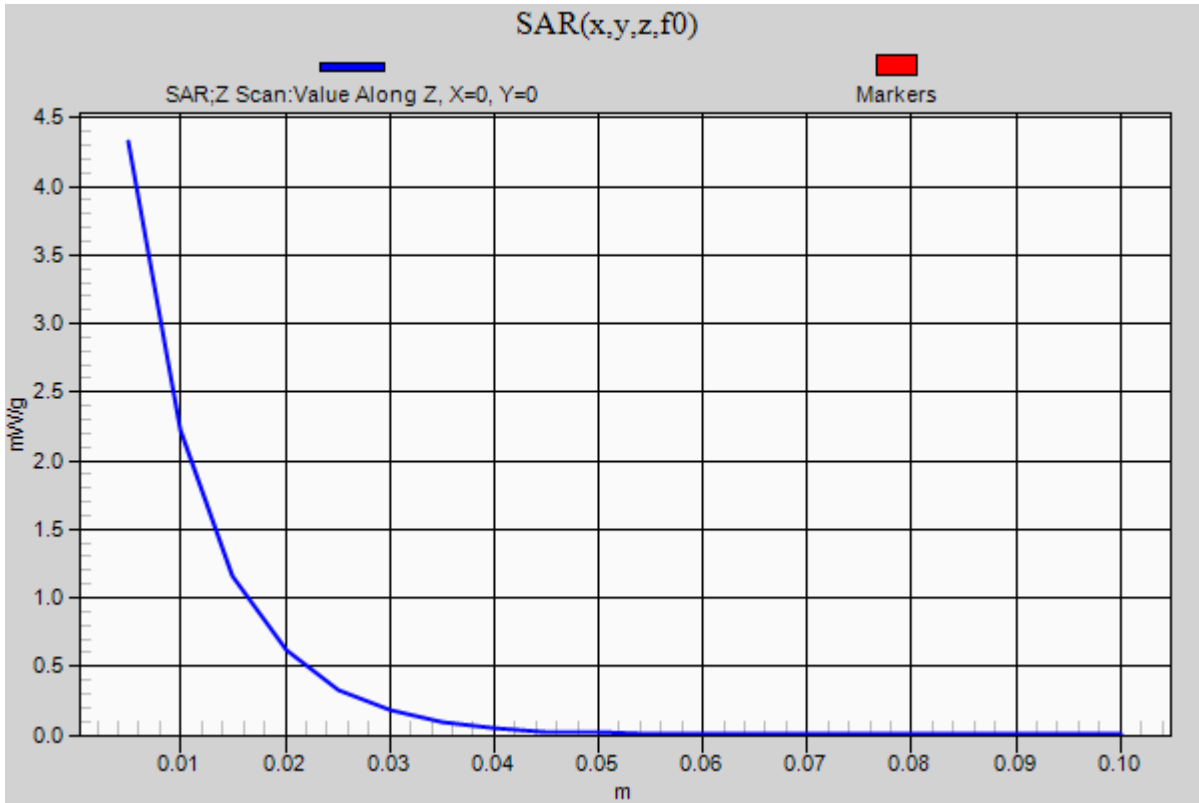
0 dB = 7.240mW/g = 17.19 dB mW/g

20120501_SystemPerformanceCheck-D2450V2 SN 748

Frequency: 2450 MHz; Duty Cycle: 1:1

Body/Pin=100 mW/Z Scan (1x1x21): Measurement grid: dx=20mm, dy=20mm, dz=5mm

Maximum value of SAR (measured) = 4.326 mW/g



20120501_SystemPerformanceCheck-D750V3 SN 1019

Frequency: 750 MHz; Duty Cycle: 1:1; Room Ambient Temperature: 24.0°C; Liquid Temperature: 23.0°C

Medium parameters used: $f = 750 \text{ MHz}$; $\sigma = 0.964 \text{ mho/m}$; $\epsilon_r = 56.415$; $\rho = 1000 \text{ kg/m}^3$

DASY5 Configuration:

- Electronics: DAE3 Sn500; Calibrated: 7/14/2011

- Probe: EX3DV4 - SN3773; ConvF(8.92, 8.92, 8.92); Calibrated: 3/14/2012

- Sensor-Surface: 2.5mm (Mechanical Surface Detection (Locations From Previous Scan Used)), Sensor-Surface: 2.5mm (Mechanical Surface Detection)

- Phantom: ELI v5.0 (A); Type: QDOVA001BB; Serial: 1120

Body/Pin=100 mW/Area Scan (7x7x1): Measurement grid: dx=15mm, dy=15mm

Maximum value of SAR (measured) = 1.045 mW/g

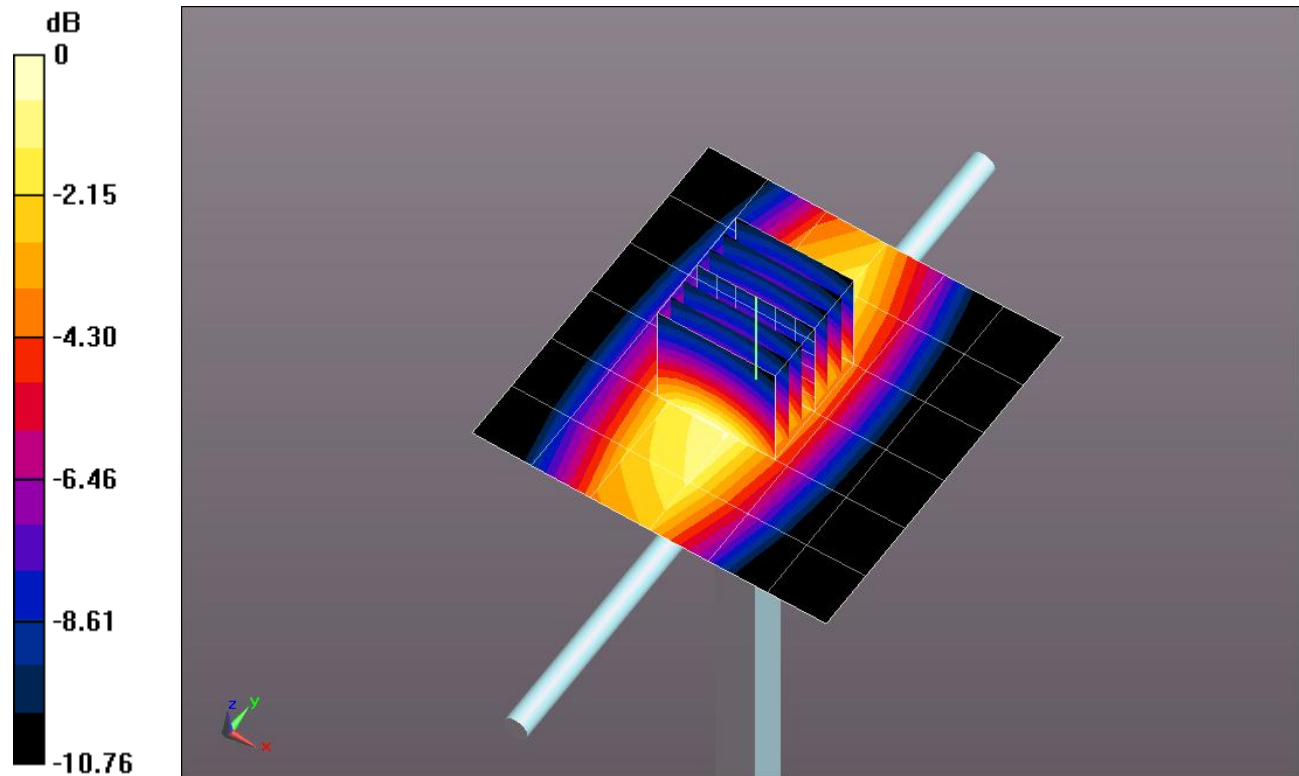
Body/Pin=100 mW/Zoom Scan (7x7x7)/Cube 0: Measurement grid: dx=5mm, dy=5mm, dz=5mm

Reference Value = 34.505 V/m; Power Drift = 0.02 dB

Peak SAR (extrapolated) = 1.4220

SAR(1 g) = 0.891 mW/g; SAR(10 g) = 0.564 mW/g

Maximum value of SAR (measured) = 1.104 mW/g



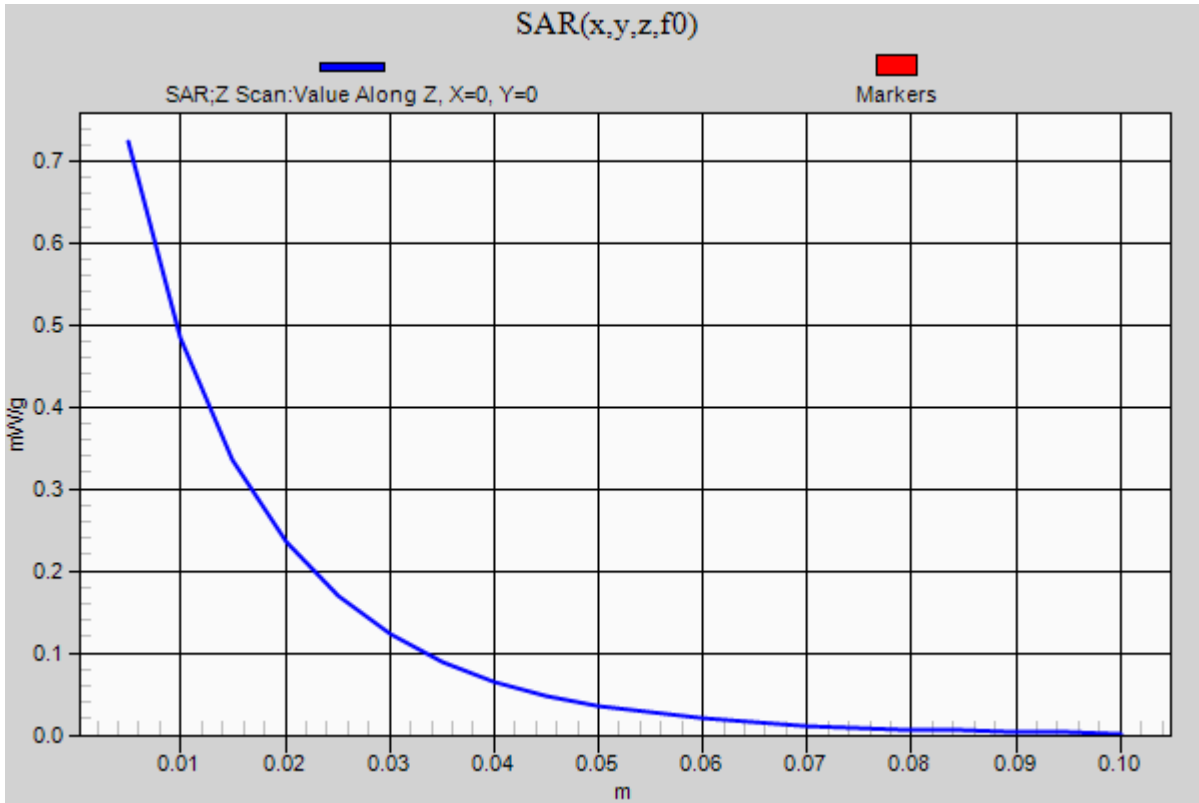
0 dB = 1.100mW/g = 0.83 dB mW/g

20120501_SystemPerformanceCheck-D750V3 SN 1019

Frequency: 750 MHz; Duty Cycle: 1:1

Body/Pin=100 mW/Z Scan (1x1x21): Measurement grid: dx=20mm, dy=20mm, dz=5mm

Maximum value of SAR (measured) = 0.723 mW/g



20120502_SystemPerformanceCheck-D750V3 SN 1019

Frequency: 750 MHz; Duty Cycle: 1:1; Room Ambient Temperature: 24.0°C; Liquid Temperature: 23.0°C
 Medium parameters used: $f = 750 \text{ MHz}$; $\sigma = 0.89 \text{ mho/m}$; $\epsilon_r = 41.648$; $\rho = 1000 \text{ kg/m}^3$

DASY5 Configuration:

- Electronics: DAE3 Sn500; Calibrated: 7/14/2011
- Probe: EX3DV4 - SN3773; ConvF(9.16, 9.16, 9.16); Calibrated: 3/14/2012
- Sensor-Surface: 2.5mm (Mechanical Surface Detection (Locations From Previous Scan Used)), Sensor-Surface: 2.5mm (Mechanical Surface Detection)
- Phantom: SAM; Type: QD000P40CD; Serial: 1632

Head/Pin=100 mW/Area Scan (7x7x1): Measurement grid: $dx=15\text{mm}$, $dy=15\text{mm}$

Maximum value of SAR (measured) = 0.946 mW/g

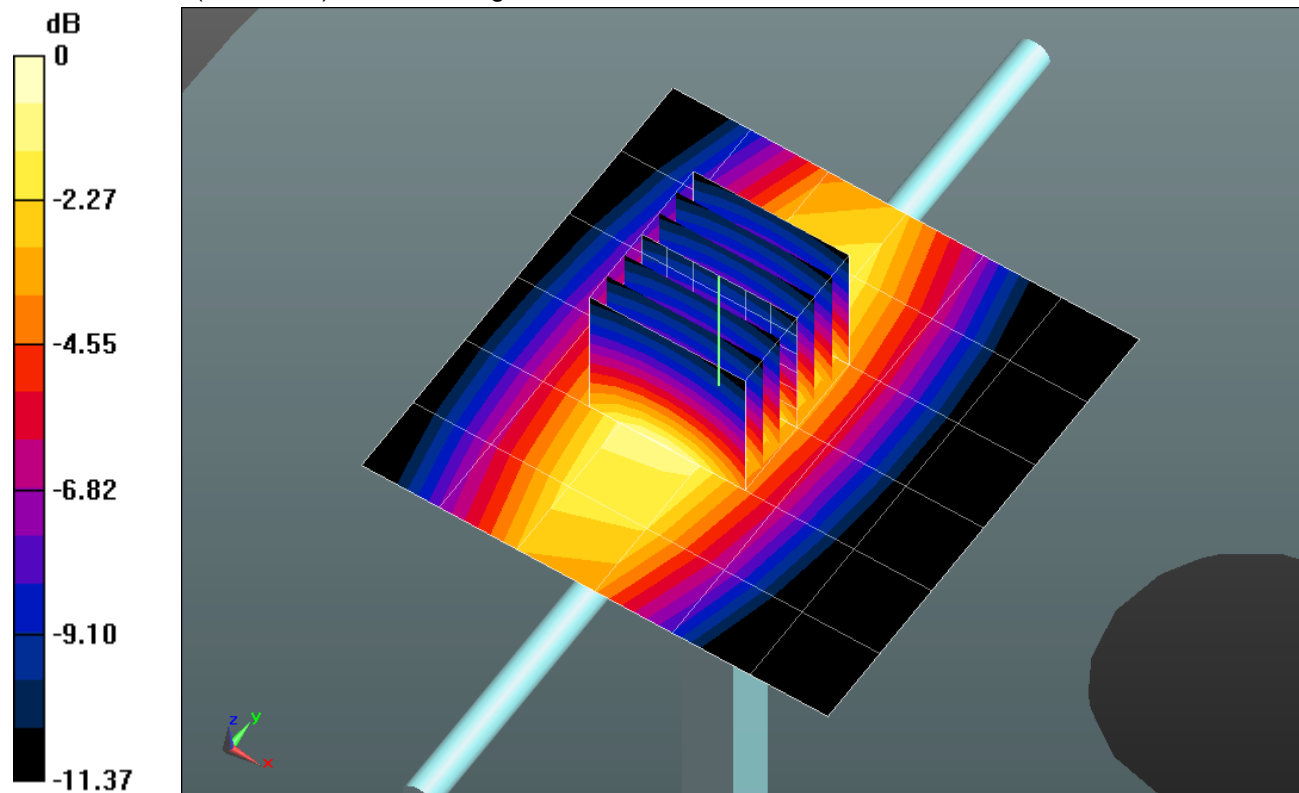
Head/Pin=100 mW/Zoom Scan (7x7x7)/Cube 0: Measurement grid: $dx=5\text{mm}$, $dy=5\text{mm}$, $dz=5\text{mm}$

Reference Value = 34.803 V/m; Power Drift = 0.24 dB

Peak SAR (extrapolated) = 1.4900

SAR(1 g) = 0.895 mW/g; SAR(10 g) = 0.554 mW/g

Maximum value of SAR (measured) = 1.129 mW/g



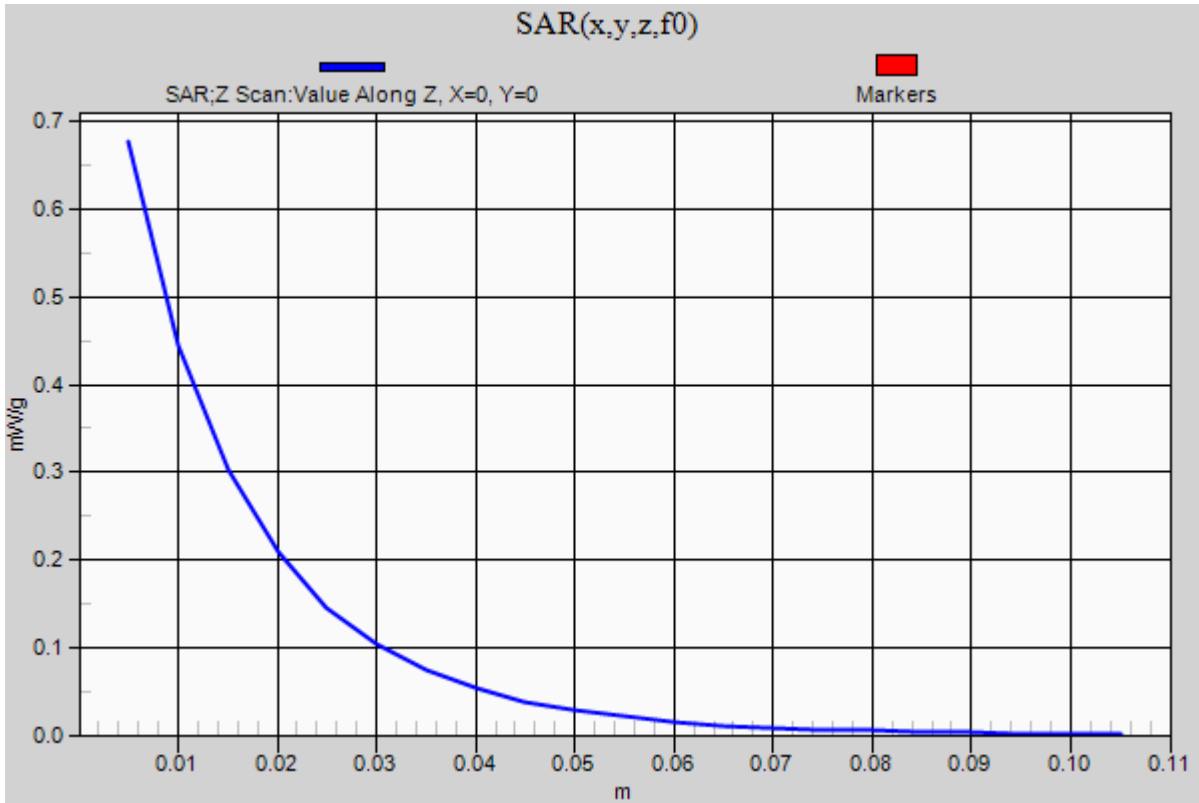
0 dB = 1.130mW/g = 1.06 dB mW/g

20120502_SystemPerformanceCheck-D750V3 SN 1019

Frequency: 750 MHz; Duty Cycle: 1:1

Head/Pin=100 mW/Z Scan (1x1x21): Measurement grid: dx=20mm, dy=20mm, dz=5mm

Maximum value of SAR (measured) = 0.677 mW/g



20120503_SystemPerformanceCheck-D750V3 SN 1019

Frequency: 750 MHz; Duty Cycle: 1:1; Room Ambient Temperature: 24.0°C; Liquid Temperature: 23.0°C
 Medium parameters used: $f = 750 \text{ MHz}$; $\sigma = 0.966 \text{ mho/m}$; $\epsilon_r = 56.279$; $\rho = 1000 \text{ kg/m}^3$

DASY5 Configuration:

- Electronics: DAE3 Sn500; Calibrated: 7/14/2011
- Probe: EX3DV4 - SN3773; ConvF(8.92, 8.92, 8.92); Calibrated: 3/14/2012
- Sensor-Surface: 2.5mm (Mechanical Surface Detection)
- Phantom: ELI v5.0 (A); Type: QDOVA001BB; Serial: 1120

Body/Pin=100 mW/Area Scan (7x7x1): Measurement grid: $dx=15\text{mm}$, $dy=15\text{mm}$

Maximum value of SAR (measured) = 1.066 mW/g

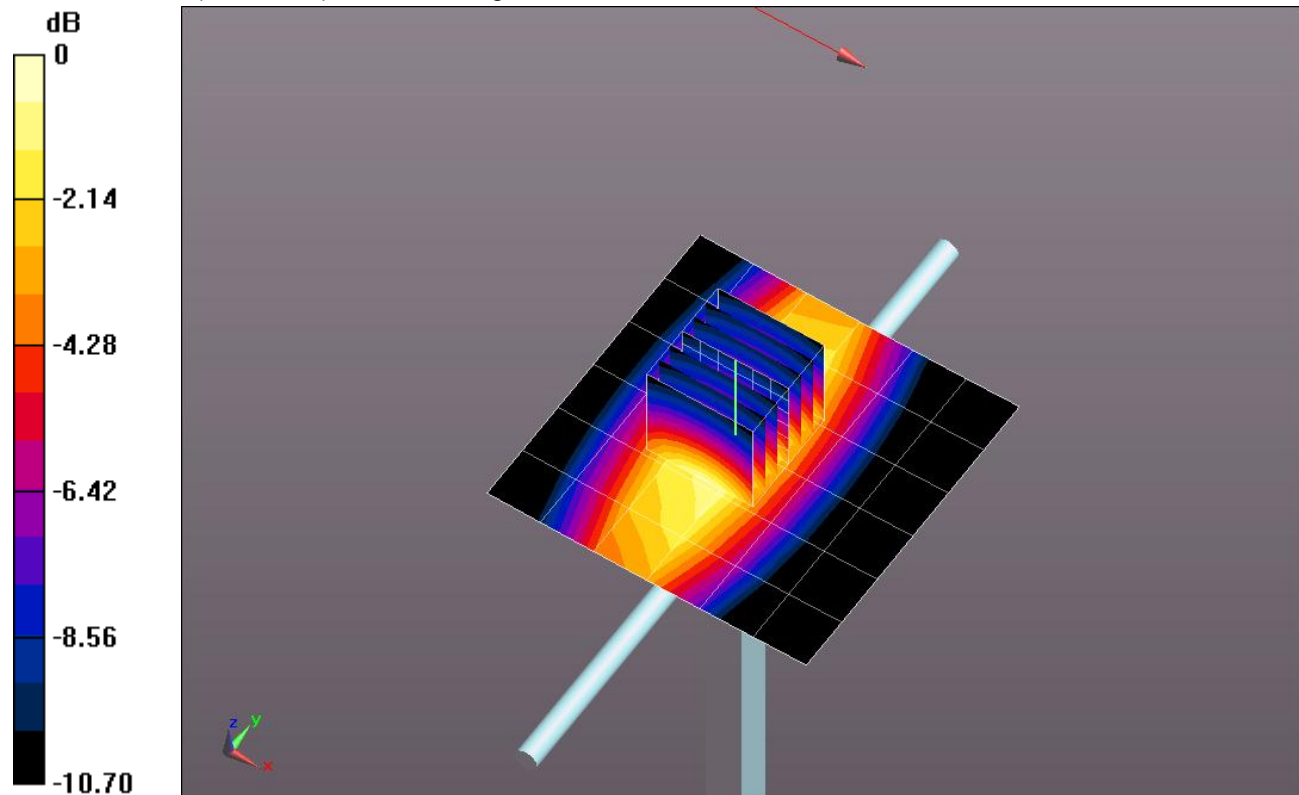
Body/Pin=100 mW/Zoom Scan (7x7x7)/Cube 0: Measurement grid: $dx=5\text{mm}$, $dy=5\text{mm}$, $dz=5\text{mm}$

Reference Value = 36.085 V/m; Power Drift = -0.01 dB

Peak SAR (extrapolated) = 1.5500

SAR(1 g) = 0.972 mW/g; SAR(10 g) = 0.615 mW/g

Maximum value of SAR (measured) = 1.218 mW/g



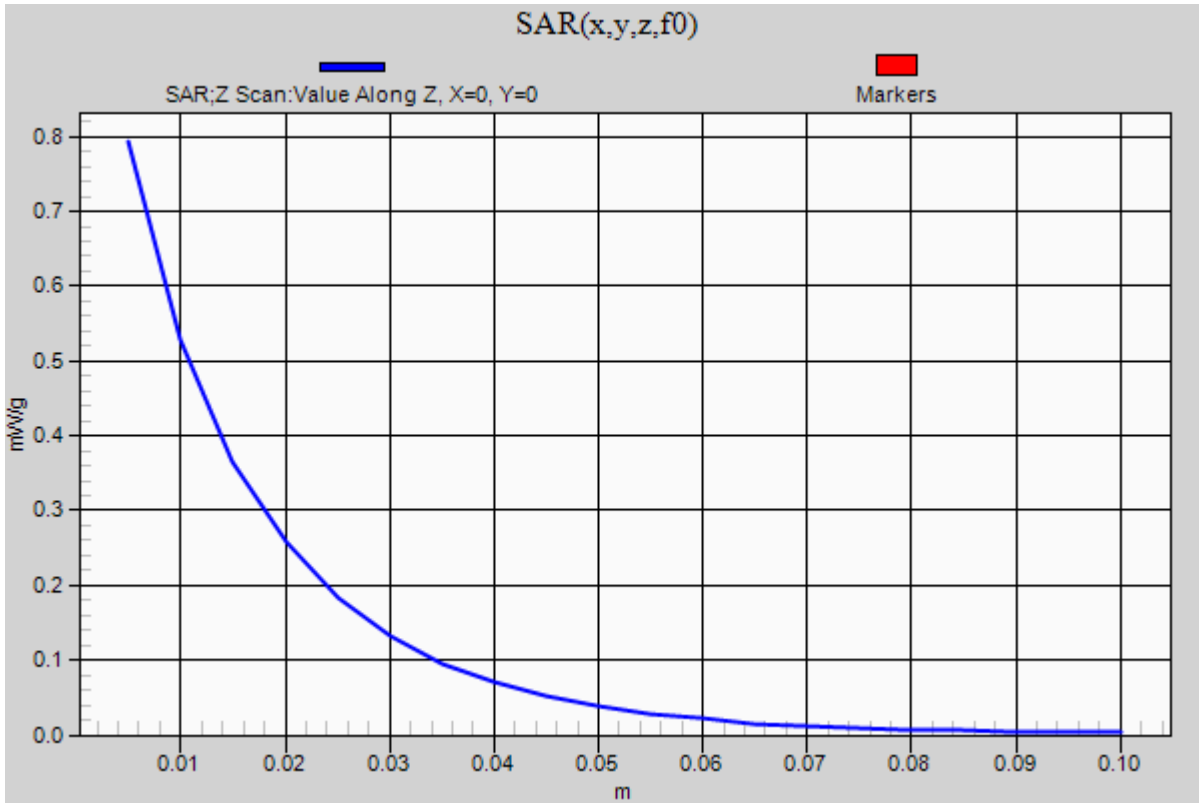
0 dB = 1.220mW/g = 1.73 dB mW/g

20120503_SystemPerformanceCheck-D750V3 SN 1019

Frequency: 750 MHz; Duty Cycle: 1:1

Body/Pin=100 mW/Z Scan (1x1x21): Measurement grid: dx=20mm, dy=20mm, dz=5mm

Maximum value of SAR (measured) = 0.793 mW/g



20120503_SystemPerformanceCheck-D835V2 SN 4d002

Frequency: 835 MHz; Duty Cycle: 1:1; Room Ambient Temperature: 24.0°C; Liquid Temperature: 23.0°C

Medium parameters used: $f = 835$ MHz; $\sigma = 0.985$ mho/m; $\epsilon_r = 53.986$; $\rho = 1000$ kg/m³

DASY5 Configuration:

- Electronics: DAE3 Sn500; Calibrated: 7/14/2011
- Probe: EX3DV4 - SN3773; ConvF(8.74, 8.74, 8.74); Calibrated: 3/14/2012
- Sensor-Surface: 2.5mm (Mechanical Surface Detection)
- Phantom: ELI v5.0 (A); Type: QDOVA001BB; Serial: 1120

Body/Pin=100 mW/Area Scan (7x7x1): Measurement grid: dx=15mm, dy=15mm

Maximum value of SAR (measured) = 1.112 mW/g

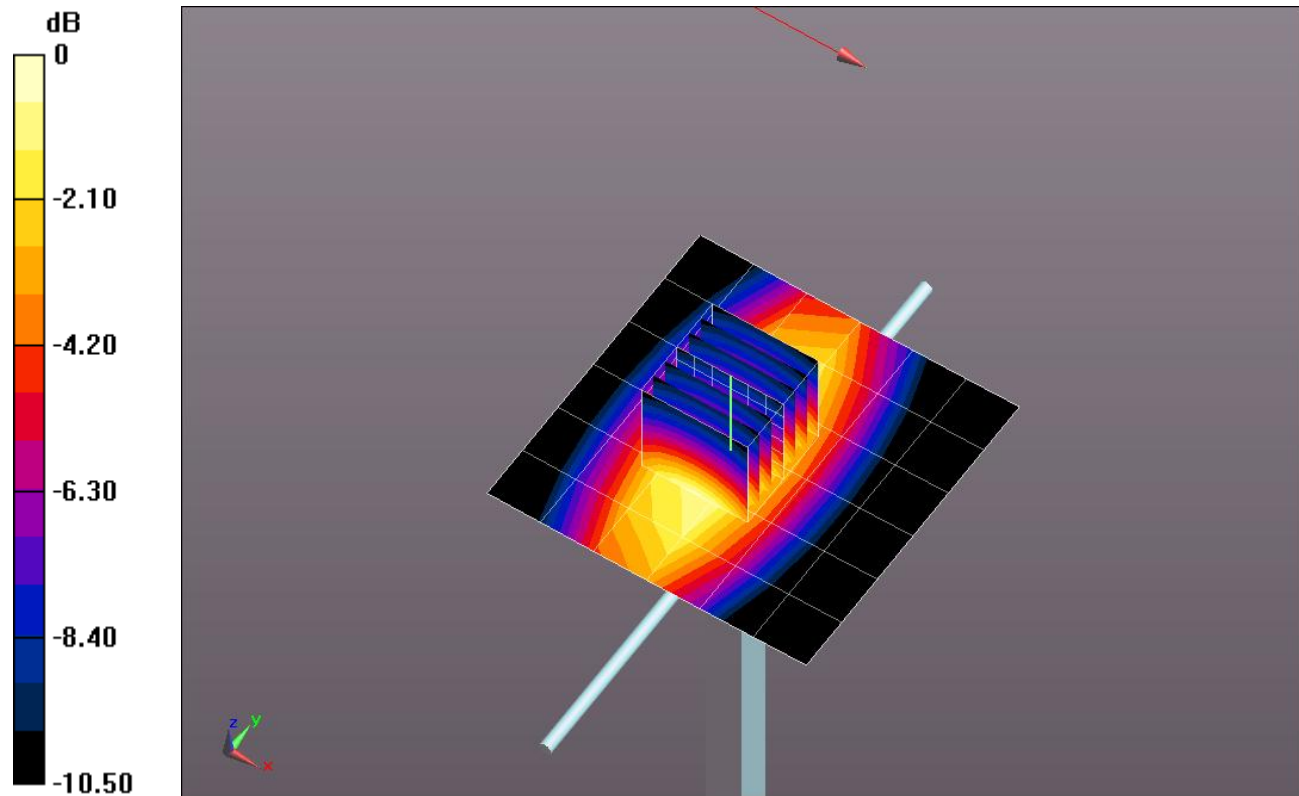
Body/Pin=100 mW/Zoom Scan (7x7x7)/Cube 0: Measurement grid: dx=5mm, dy=5mm, dz=5mm

Reference Value = 35.477 V/m; Power Drift = -0.06 dB

Peak SAR (extrapolated) = 1.4770

SAR(1 g) = 0.981 mW/g; SAR(10 g) = 0.637 mW/g

Maximum value of SAR (measured) = 1.202 mW/g



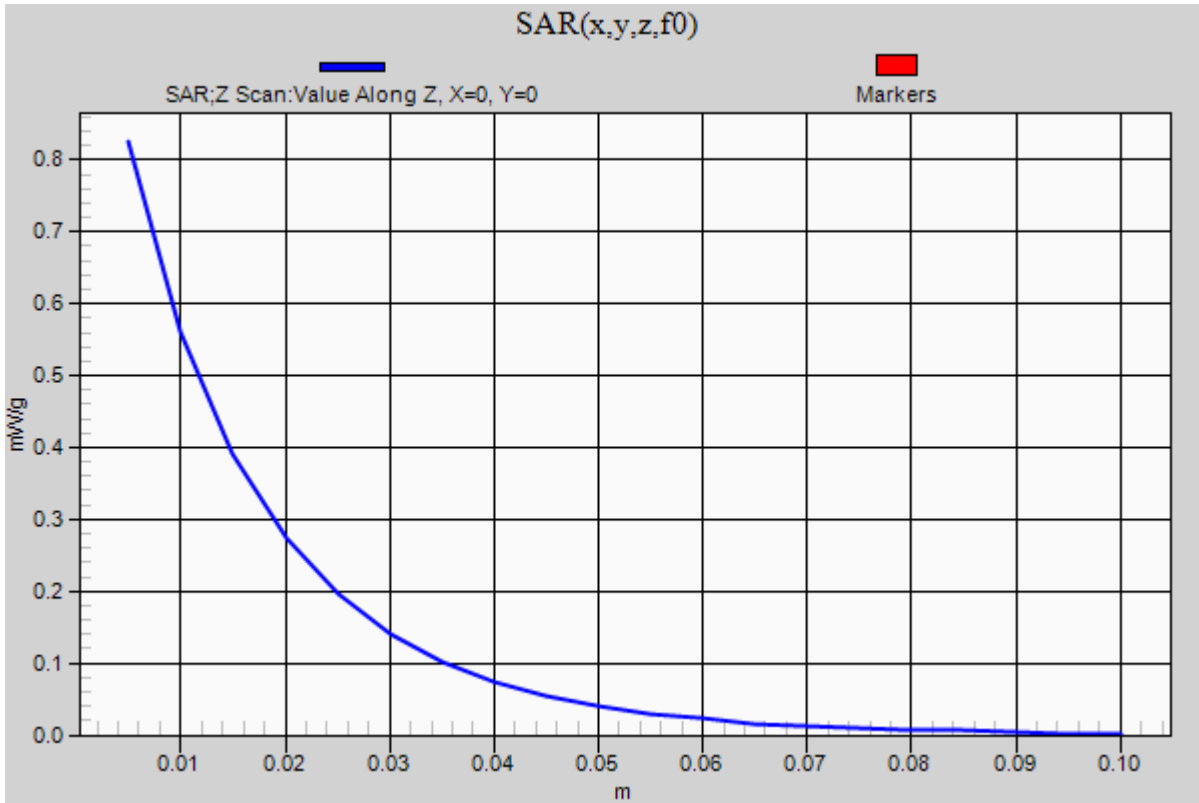
0 dB = 1.200mW/g = 1.58 dB mW/g

20120503_SystemPerformanceCheck-D835V2 SN 4d002

Frequency: 835 MHz; Duty Cycle: 1:1

Body/Pin=100 mW/Z Scan (1x1x21): Measurement grid: dx=20mm, dy=20mm, dz=5mm

Maximum value of SAR (measured) = 0.825 mW/g



20120504_SystemPerformanceCheck-D2450V2 SN 748

Frequency: 2450 MHz; Duty Cycle: 1:1; Room Ambient Temperature: 24.0°C; Liquid Temperature: 23.0°C
 Medium parameters used: $f = 2450$ MHz; $\sigma = 1.997$ mho/m; $\epsilon_r = 52.885$; $\rho = 1000$ kg/m³

DASY5 Configuration:

- Electronics: DAE3 Sn500; Calibrated: 7/14/2011
- Probe: EX3DV4 - SN3773; ConvF(6.67, 6.67, 6.67); Calibrated: 3/14/2012
- Sensor-Surface: 2.5mm (Mechanical Surface Detection)
- Phantom: ELI v5.0 (A); Type: QDOVA001BB; Serial: 1117

Body/Pin=100 mW/Area Scan (7x7x1): Measurement grid: dx=15mm, dy=15mm

Maximum value of SAR (measured) = 6.376 mW/g

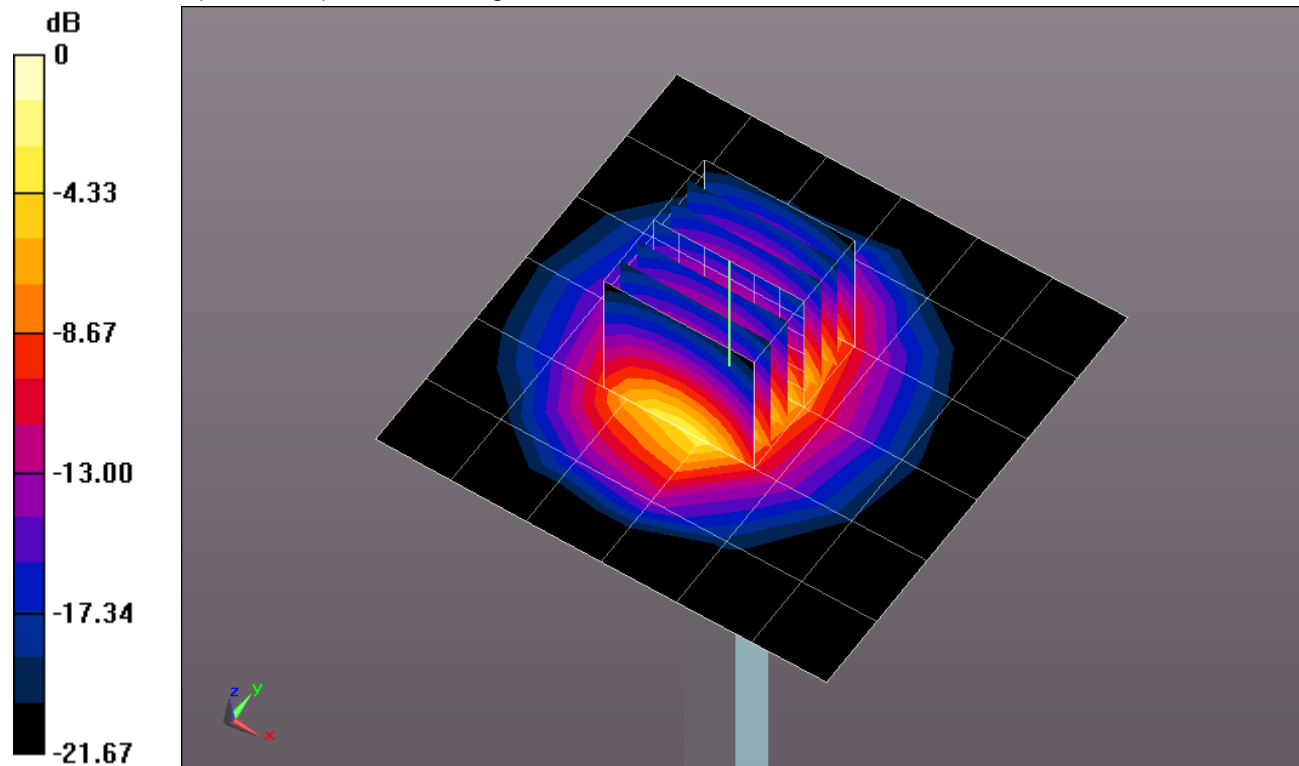
Body/Pin=100 mW/Zoom Scan (7x7x7)/Cube 0: Measurement grid: dx=5mm, dy=5mm, dz=5mm

Reference Value = 62.144 V/m; Power Drift = -0.02 dB

Peak SAR (extrapolated) = 11.1780

SAR(1 g) = 5.41 mW/g; SAR(10 g) = 2.49 mW/g

Maximum value of SAR (measured) = 7.714 mW/g



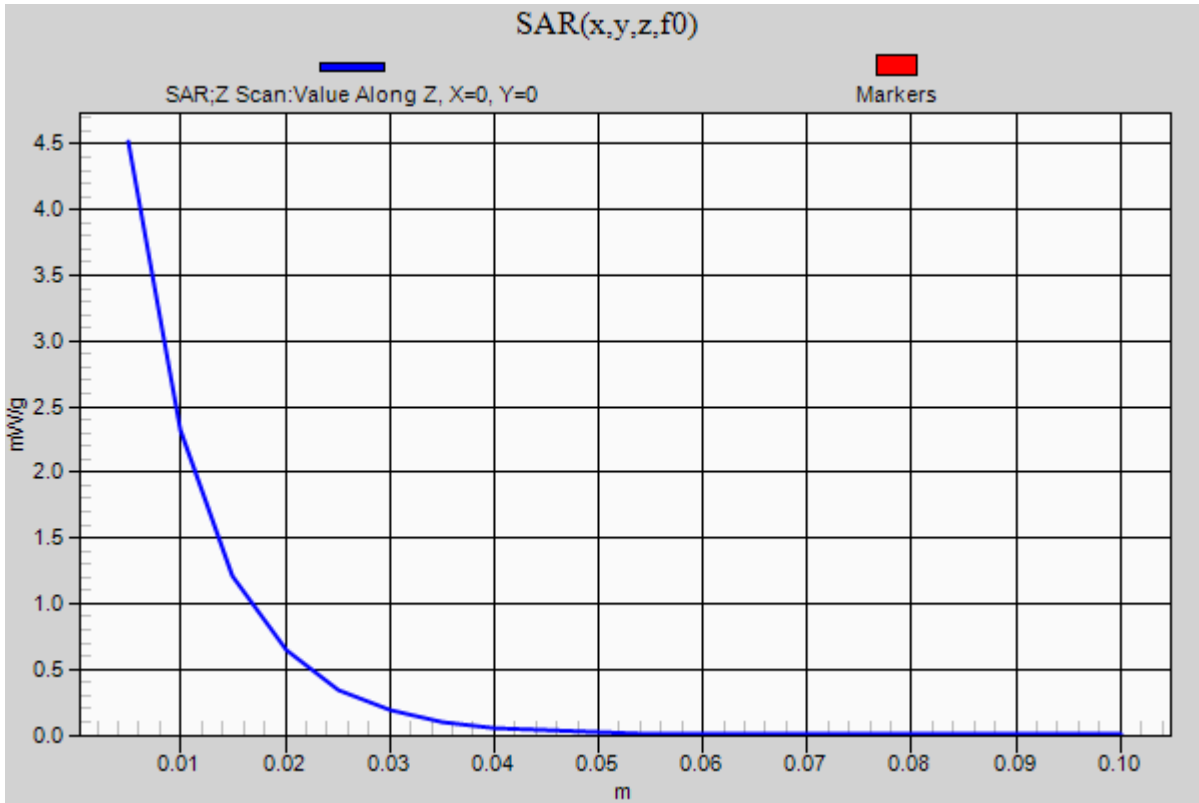
0 dB = 7.710mW/g = 17.74 dB mW/g

20120504_SystemPerformanceCheck-D2450V2 SN 748

Frequency: 2450 MHz; Duty Cycle: 1:1

Body/Pin=100 mW/Z Scan (1x1x21): Measurement grid: dx=20mm, dy=20mm, dz=5mm

Maximum value of SAR (measured) = 4.517 mW/g



20120504_SystemPerformanceCheck-D1900V2 SN 5d043

Frequency: 1900 MHz; Duty Cycle: 1:1; Room Ambient Temperature: 24.0°C; Liquid Temperature: 23.0°C
 Medium parameters used: $f = 1900 \text{ MHz}$; $\sigma = 1.53 \text{ mho/m}$; $\epsilon_r = 53.873$; $\rho = 1000 \text{ kg/m}^3$

DASY5 Configuration:

- Electronics: DAE3 Sn500; Calibrated: 7/14/2011
- Probe: EX3DV4 - SN3773; ConvF(7.11, 7.11, 7.11); Calibrated: 3/14/2012
- Sensor-Surface: 2.5mm (Mechanical Surface Detection)
- Phantom: ELI v5.0 (A); Type: QDOVA001BB; Serial: 1120

Body/Pin=100 mW/Area Scan (7x7x1): Measurement grid: dx=15mm, dy=15mm

Maximum value of SAR (measured) = 4.657 mW/g

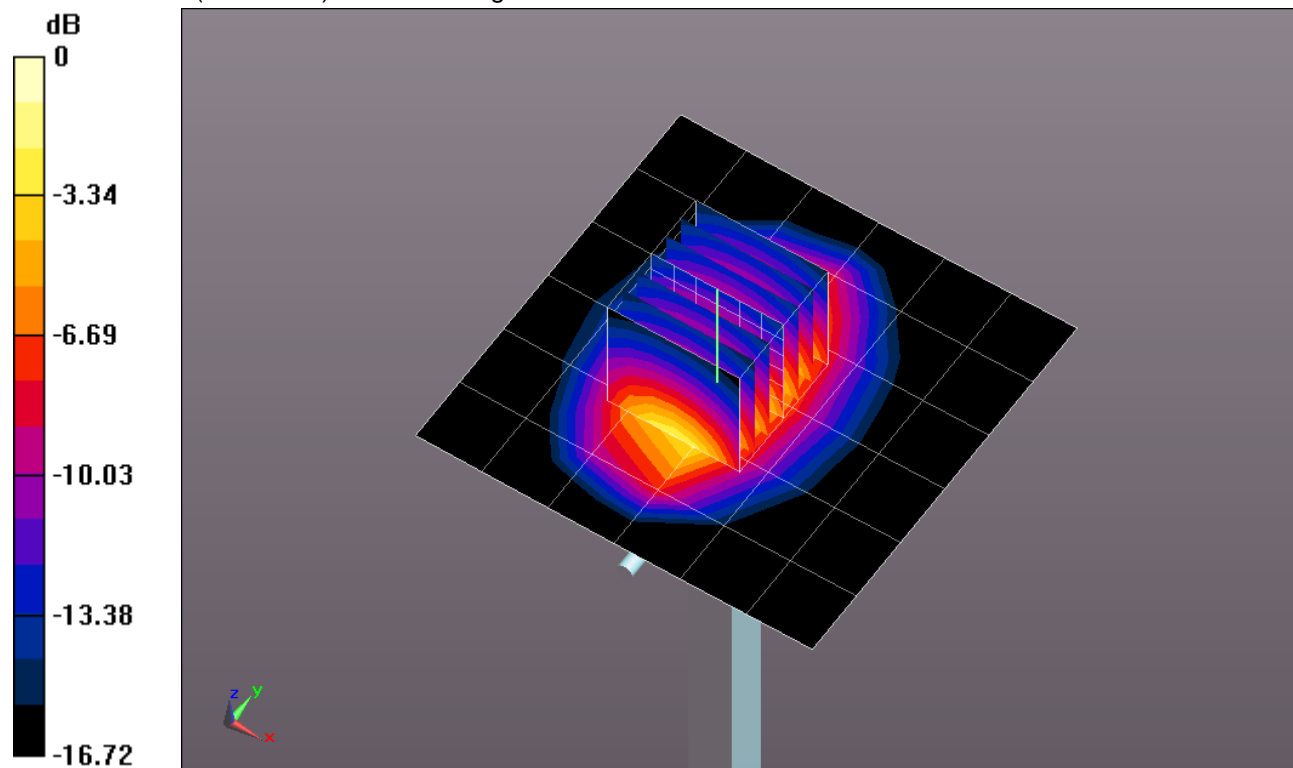
Body/Pin=100 mW/Zoom Scan (7x7x7)/Cube 0: Measurement grid: dx=5mm, dy=5mm, dz=5mm

Reference Value = 60.388 V/m; Power Drift = -0.02 dB

Peak SAR (extrapolated) = 7.3940

SAR(1 g) = 4.12 mW/g; SAR(10 g) = 2.17 mW/g

Maximum value of SAR (measured) = 5.525 mW/g



0 dB = 5.520mW/g = 14.84 dB mW/g

20120504_SystemPerformanceCheck-D1900V2 SN 5d043

Frequency: 1900 MHz; Duty Cycle: 1:1

Body/Pin=100 mW/Z Scan (1x1x21): Measurement grid: dx=20mm, dy=20mm, dz=5mm

Maximum value of SAR (measured) = 3.496 mW/g

