

20160111 SystemPerformanceCheck-D835V2 SN 4d142

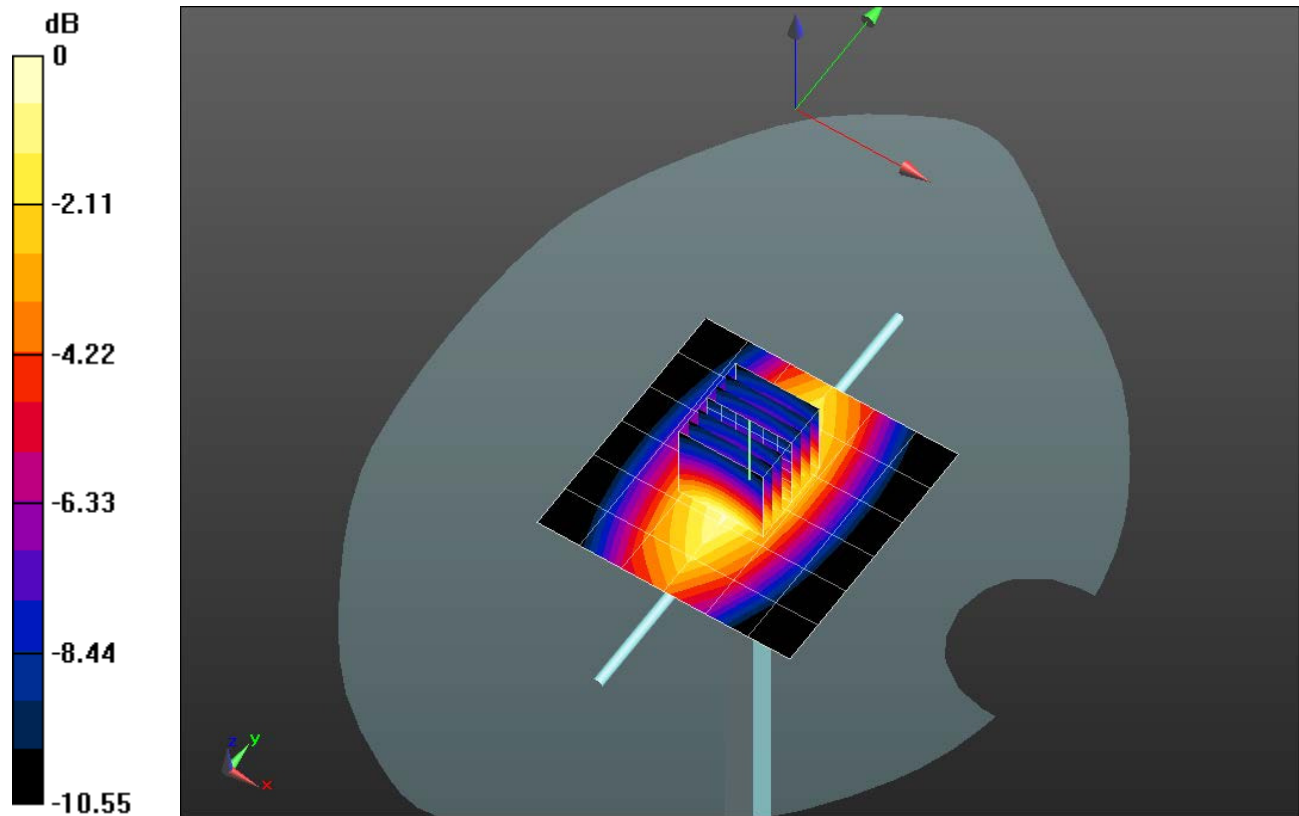
Frequency: 835 MHz; Duty Cycle: 1:1; Room Ambient Temperature: 24.0°C; Liquid Temperature: 23.0°C
 Medium parameters used: $f = 835 \text{ MHz}$; $\sigma = 0.924 \text{ S/m}$; $\epsilon_r = 41.952$; $\rho = 1000 \text{ kg/m}^3$

DASY5 Configuration:

- Area Scan Setting: Find Secondary Maximum Within: 2.0 dB and with a peak SAR value greater than 0.0012W/kg
- Electronics: DAE3 Sn500; Calibrated: 5/22/2015
- Probe: EX3DV4 - SN7356; ConvF(9.96, 9.96, 9.96); Calibrated: 4/22/2015;
- Sensor-Surface: 2.5mm (Mechanical Surface Detection)
- Phantom: SAM; Type: QD000P40CD; Serial: TP 1751

Head/Pin=100 mW/Area Scan (7x7x1): Measurement grid: dx=15mm, dy=15mm
 Maximum value of SAR (measured) = 1.06 W/kg

Head/Pin=100 mW/Zoom Scan (7x7x7)/Cube 0: Measurement grid: dx=5mm, dy=5mm, dz=5mm
 Reference Value = 30.995 V/m; Power Drift = 0.14 dB
 Peak SAR (extrapolated) = 1.32 W/kg
SAR(1 g) = 0.898 W/kg; SAR(10 g) = 0.586 W/kg
 Maximum value of SAR (measured) = 1.09 W/kg

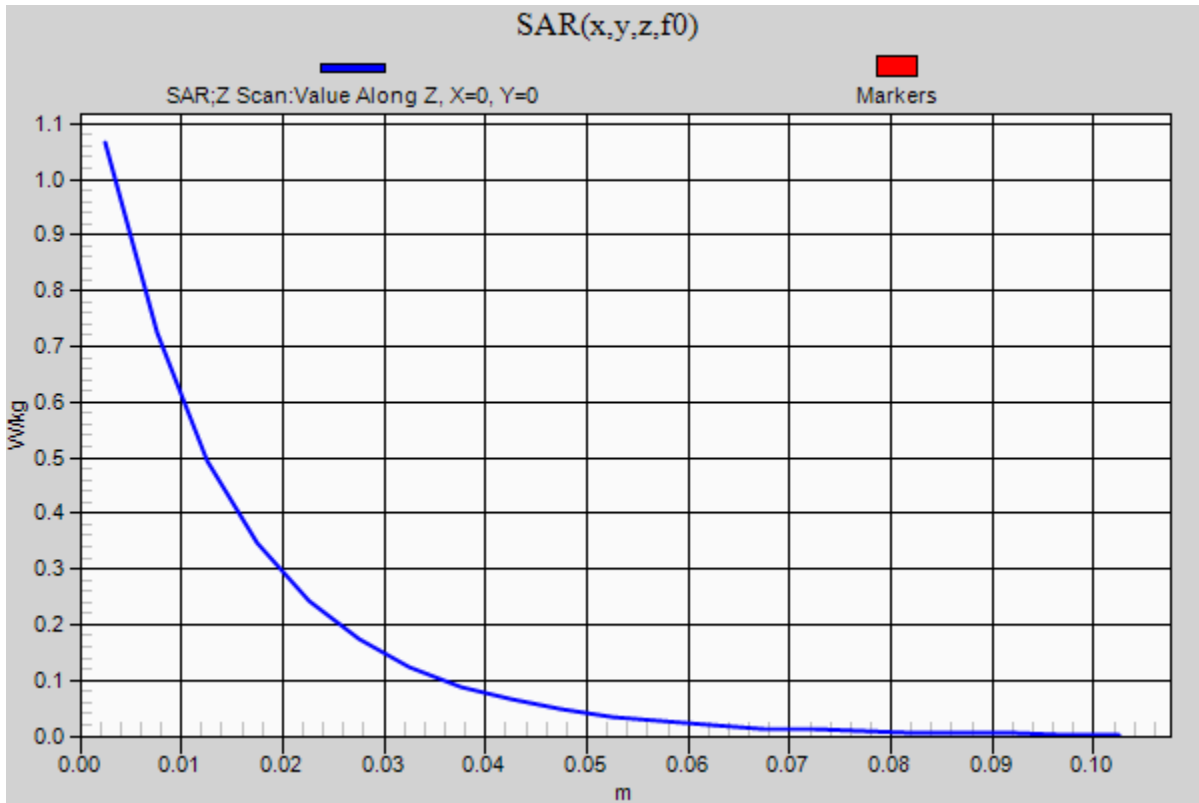


0 dB = 1.09 W/kg = 0.37 dBW/kg

20160111 SystemPerformanceCheck-D835V2 SN 4d142

Frequency: 835 MHz; Duty Cycle: 1:1

Head/Pin=100 mW/Z Scan (1x1x21): Measurement grid: dx=20mm, dy=20mm, dz=5mm
Maximum value of SAR (measured) = 1.07 W/kg



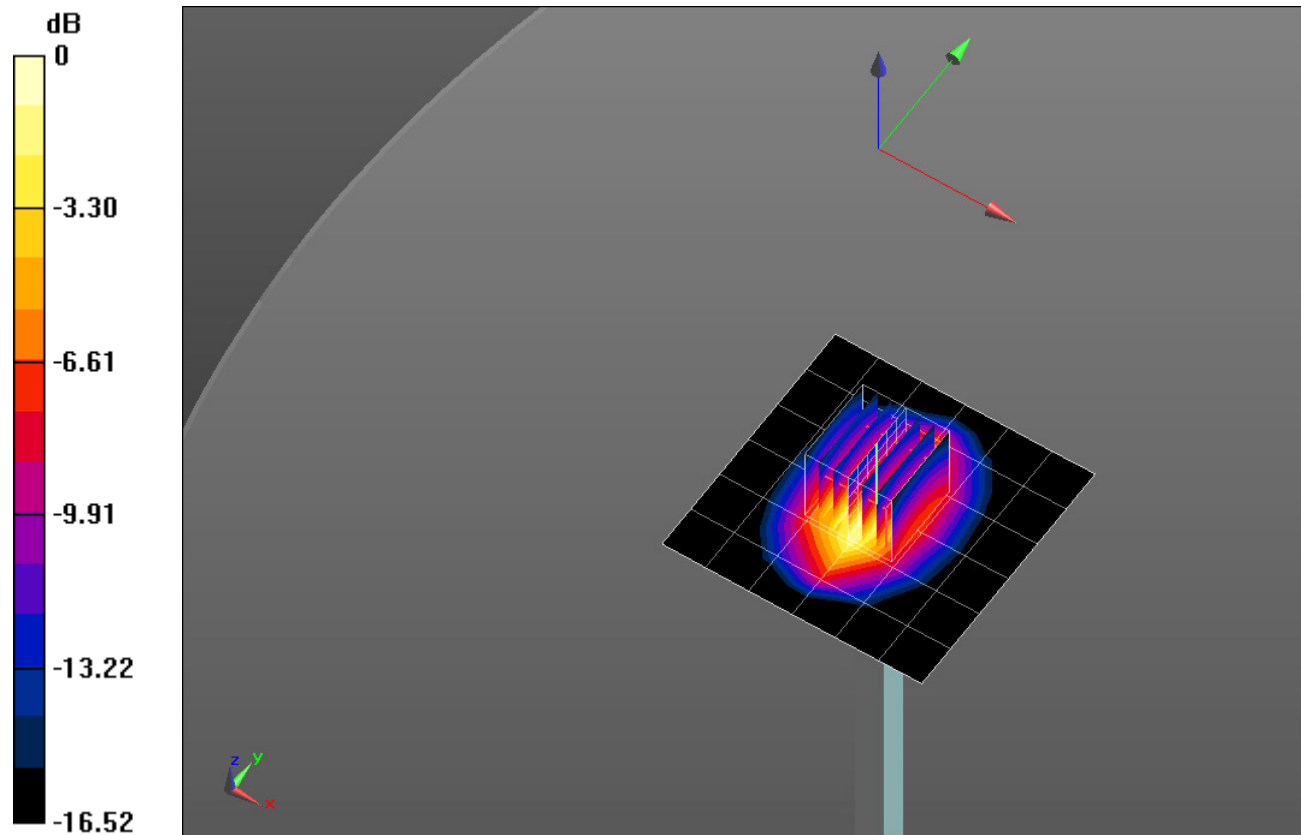
20160110_SystemPerformanceCheck-D1900V2 SN 5d163

Frequency: 1900 MHz; Duty Cycle: 1:1; Room Ambient Temperature: 24.0°C; Liquid Temperature: 23.0°C
 Medium parameters used: $f = 1900 \text{ MHz}$; $\sigma = 1.549 \text{ S/m}$; $\epsilon_r = 51.96$; $\rho = 1000 \text{ kg/m}^3$
 DASY5 Configuration:

- Area Scan Setting: Find Secondary Maximum Within: 2.0 dB and with a peak SAR value greater than 0.0012W/kg
- Electronics: DAE4 Sn1434; Calibrated: 4/16/2015
- Probe: EX3DV4 - SN3749; ConvF(7.09, 7.09, 7.09); Calibrated: 1/26/2015;
- Sensor-Surface: 2.5mm (Mechanical Surface Detection)
- Phantom: ELI v5.0 (A); Type: QDOVA001BB; Serial: 1213

Body/Pin=100 mW/Area Scan (7x7x1): Measurement grid: dx=15mm, dy=15mm
 Maximum value of SAR (measured) = 5.11 W/kg

Body/Pin=100 mW/Zoom Scan (7x7x7)/Cube 0: Measurement grid: dx=5mm, dy=5mm, dz=5mm
 Reference Value = 57.89 V/m; Power Drift = 0.05 dB
 Peak SAR (extrapolated) = 6.97 W/kg
SAR(1 g) = 3.89 W/kg; SAR(10 g) = 2.05 W/kg
 Maximum value of SAR (measured) = 5.21 W/kg



0 dB = 5.21 W/kg = 7.17 dBW/kg

20160110_SystemPerformanceCheck-D1900V2 SN 5d163

Frequency: 1900 MHz; Duty Cycle: 1:1

Body/Pin=100 mW/Z Scan (1x1x21): Measurement grid: dx=20mm, dy=20mm, dz=5mm
Maximum value of SAR (measured) = 5.13 W/kg

