

CDMA BC0

Frequency: 836.52 MHz; Duty Cycle: 1:1; Room Ambient Temperature: 24.0°C; Liquid Temperature: 23.0°C
 Medium parameters used (interpolated): $f = 836.52$ MHz; $\sigma = 1.018$ S/m; $\epsilon_r = 53.997$; $\rho = 1000$ kg/m³

DASY5 Configuration:

- Area Scan Setting: Find Secondary Maximum Within: 2.0 dB and with a peak SAR value greater than 0.0012W/kg
- Electronics: DAE3 Sn500; Calibrated: 5/22/2015
- Probe: EX3DV4 - SN7356; ConvF(9.97, 9.97, 9.97); Calibrated: 4/22/2015;
- Sensor-Surface: 2.5mm (Mechanical Surface Detection)
- Phantom: ELI-A v5.0; Type: QDOVA002AA; Serial: TP 1194

Bodyworn (Position 2)/1xRTT RC3 SO32_ch 384/Area Scan (7x11x1): Measurement grid:
 dx=15mm, dy=15mm

[Info: Interpolated medium parameters used for SAR evaluation.](#)

Maximum value of SAR (measured) = 0.727 W/kg

Bodyworn (Position 2)/1xRTT RC3 SO32_ch 384/Zoom Scan (5x5x7)/Cube 0: Measurement grid: dx=8mm, dy=8mm, dz=5mm

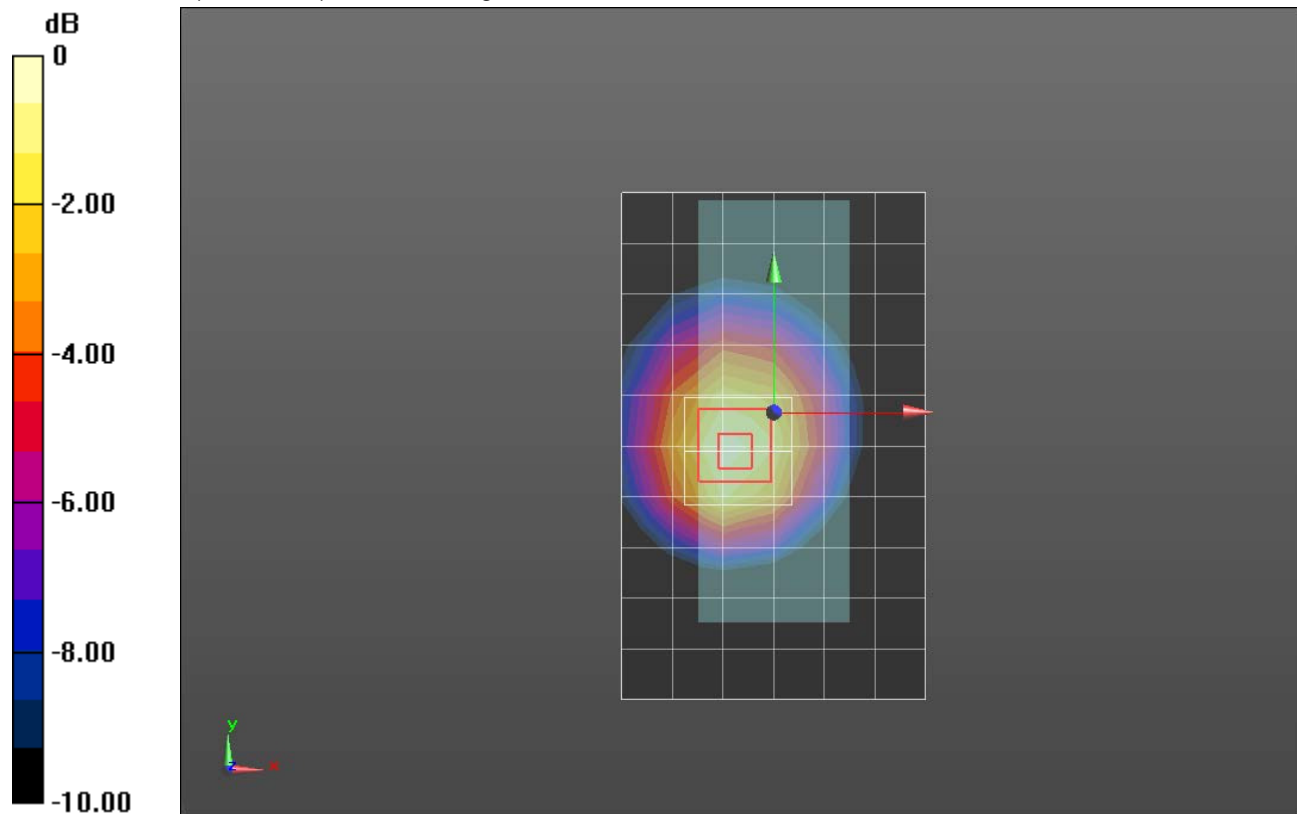
Reference Value = 20.532 V/m; Power Drift = 0.02 dB

Peak SAR (extrapolated) = 0.911 W/kg

SAR(1 g) = 0.628 W/kg; SAR(10 g) = 0.413 W/kg

[Info: Interpolated medium parameters used for SAR evaluation.](#)

Maximum value of SAR (measured) = 0.754 W/kg



0 dB = 0.754 W/kg = -1.23 dBW/kg

CDMA BC0

Frequency: 836.52 MHz; Duty Cycle: 1:1; Room Ambient Temperature: 24.0°C; Liquid Temperature: 23.0°C
 Medium parameters used (interpolated): $f = 836.52 \text{ MHz}$; $\sigma = 0.926 \text{ S/m}$; $\epsilon_r = 41.92$; $\rho = 1000 \text{ kg/m}^3$

DASY5 Configuration:

- Area Scan Setting: Find Secondary Maximum Within: 2.0 dB and with a peak SAR value greater than 0.0012W/kg
- Electronics: DAE3 Sn500; Calibrated: 5/22/2015
- Probe: EX3DV4 - SN7356; ConvF(9.96, 9.96, 9.96); Calibrated: 4/22/2015;
- Sensor-Surface: 2.5mm (Mechanical Surface Detection (Locations From Previous Scan Used)), Sensor-Surface: 2.5mm (Mechanical Surface Detection)
- Phantom: SAM; Type: QD000P40CD; Serial: TP 1751

Next-to-Mouth/1xRTT RC3 SO55_ch 384/Area Scan (7x11x1): Measurement grid: dx=15mm, dy=15mm

[Info: Interpolated medium parameters used for SAR evaluation.](#)

Maximum value of SAR (measured) = 0.561 W/kg

Next-to-Mouth/1xRTT RC3 SO55_ch 384/Zoom Scan (5x6x7)/Cube 0: Measurement grid: dx=8mm, dy=8mm, dz=5mm

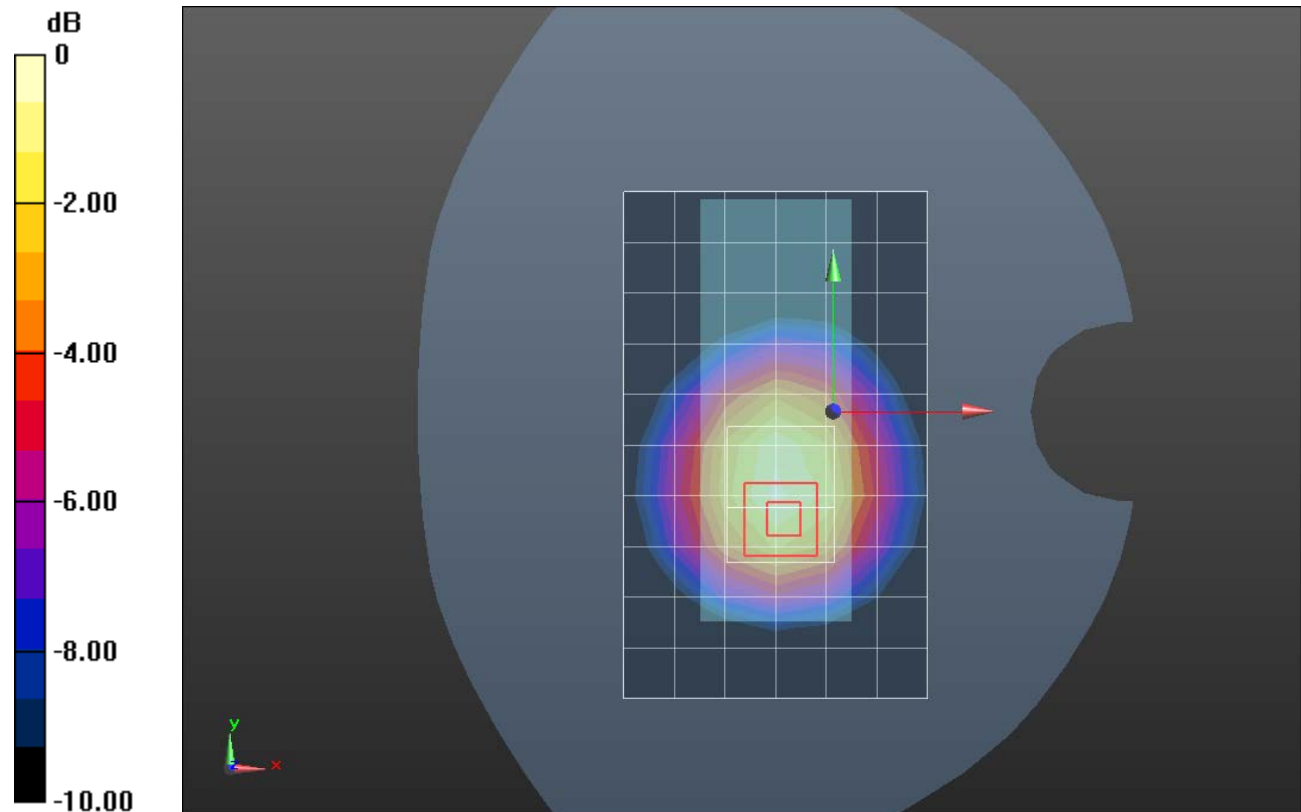
Reference Value = 25.291 V/m; Power Drift = 0.13 dB

Peak SAR (extrapolated) = 0.737 W/kg

SAR(1 g) = 0.534 W/kg; SAR(10 g) = 0.362 W/kg

[Info: Interpolated medium parameters used for SAR evaluation.](#)

Maximum value of SAR (measured) = 0.623 W/kg



0 dB = 0.623 W/kg = -2.06 dBW/kg

CDMA BC1

Frequency: 1880 MHz; Duty Cycle: 1:1; Room Ambient Temperature: 24.0°C; Liquid Temperature: 23.0°C
 Medium parameters used: $f = 1880 \text{ MHz}$; $\sigma = 1.522 \text{ S/m}$; $\epsilon_r = 52.032$; $\rho = 1000 \text{ kg/m}^3$

DASY5 Configuration:

- Area Scan Setting: Find Secondary Maximum Within: 2.0 dB and with a peak SAR value greater than 0.0012W/kg
- Electronics: DAE4 Sn1434; Calibrated: 4/16/2015
- Probe: EX3DV4 - SN3749; ConvF(7.09, 7.09, 7.09); Calibrated: 1/26/2015;
- Sensor-Surface: 2.5mm (Mechanical Surface Detection)
- Phantom: ELI v5.0 (A); Type: QDOVA001BB; Serial: 1213

Bodyworn (Position 2)/1xRTT RC3 SO32_ch 600/Area Scan (7x11x1): Measurement grid:

$dx=15\text{mm}$, $dy=15\text{mm}$

Maximum value of SAR (measured) = 0.569 W/kg

Bodyworn (Position 2)/1xRTT RC3 SO32_ch 600/Zoom Scan (5x5x7)/Cube 0: Measurement grid:

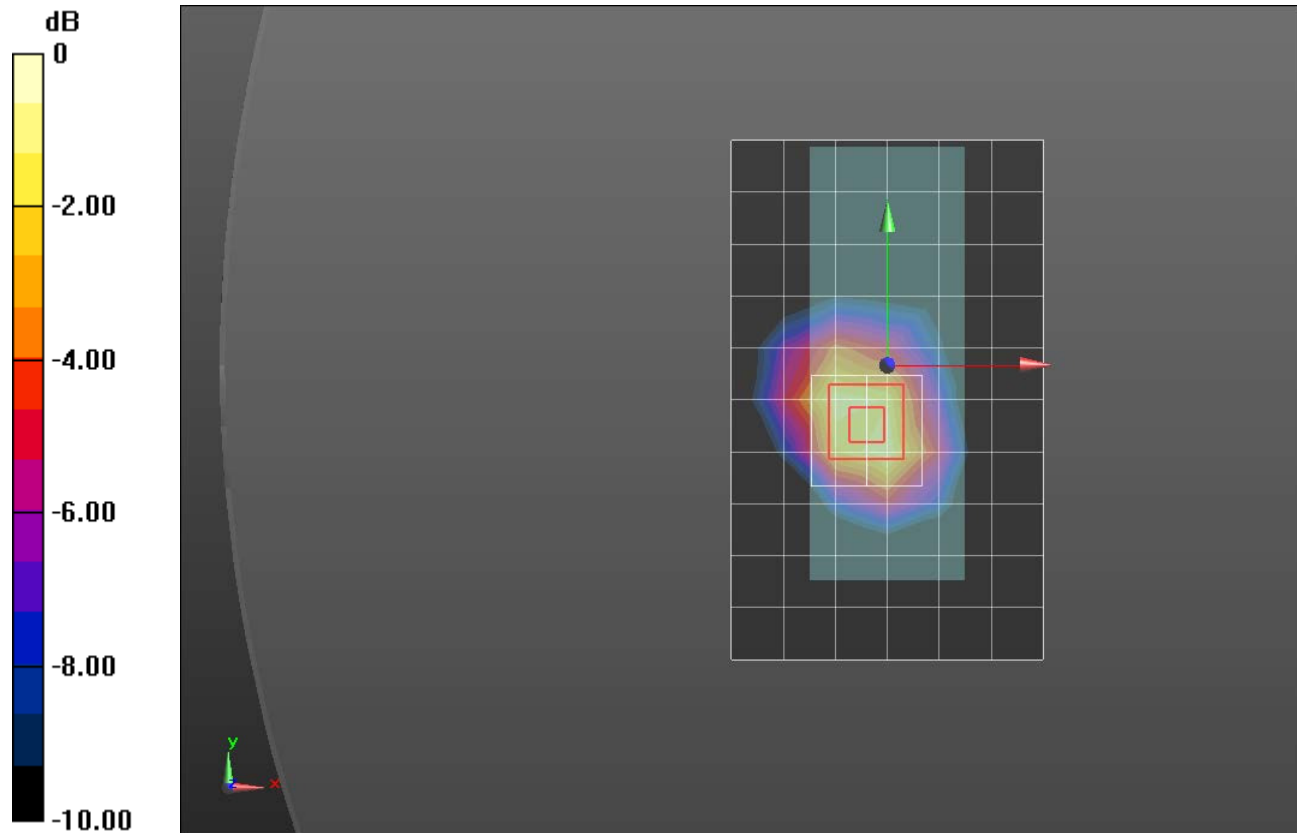
$dx=8\text{mm}$, $dy=8\text{mm}$, $dz=5\text{mm}$

Reference Value = 19.73 V/m; Power Drift = 0.01 dB

Peak SAR (extrapolated) = 0.852 W/kg

SAR(1 g) = 0.524 W/kg; SAR(10 g) = 0.305 W/kg

Maximum value of SAR (measured) = 0.660 W/kg



0 dB = 0.660 W/kg = -1.80 dBW/kg

CDMA BC1

Frequency: 1880 MHz; Duty Cycle: 1:1; Room Ambient Temperature: 24.0°C; Liquid Temperature: 23.0°C
 Medium parameters used: $f = 1880 \text{ MHz}$; $\sigma = 1.399 \text{ S/m}$; $\epsilon_r = 39.132$; $\rho = 1000 \text{ kg/m}^3$

DASY5 Configuration:

- Area Scan Setting: Find Secondary Maximum Within: 2.0 dB and with a peak SAR value greater than 0.0012W/kg
- Electronics: DAE4 Sn1434; Calibrated: 4/16/2015
- Probe: EX3DV4 - SN3749; ConvF(7.34, 7.34, 7.34); Calibrated: 1/26/2015;
- Sensor-Surface: 2.5mm (Mechanical Surface Detection)
- Phantom: SAM with CRP; Type: SAM;

Next-to-Mouth/1xRTT RC3 SO55_ch 600/Area Scan (7x11x1): Measurement grid: dx=15mm, dy=15mm

Maximum value of SAR (measured) = 0.367 W/kg

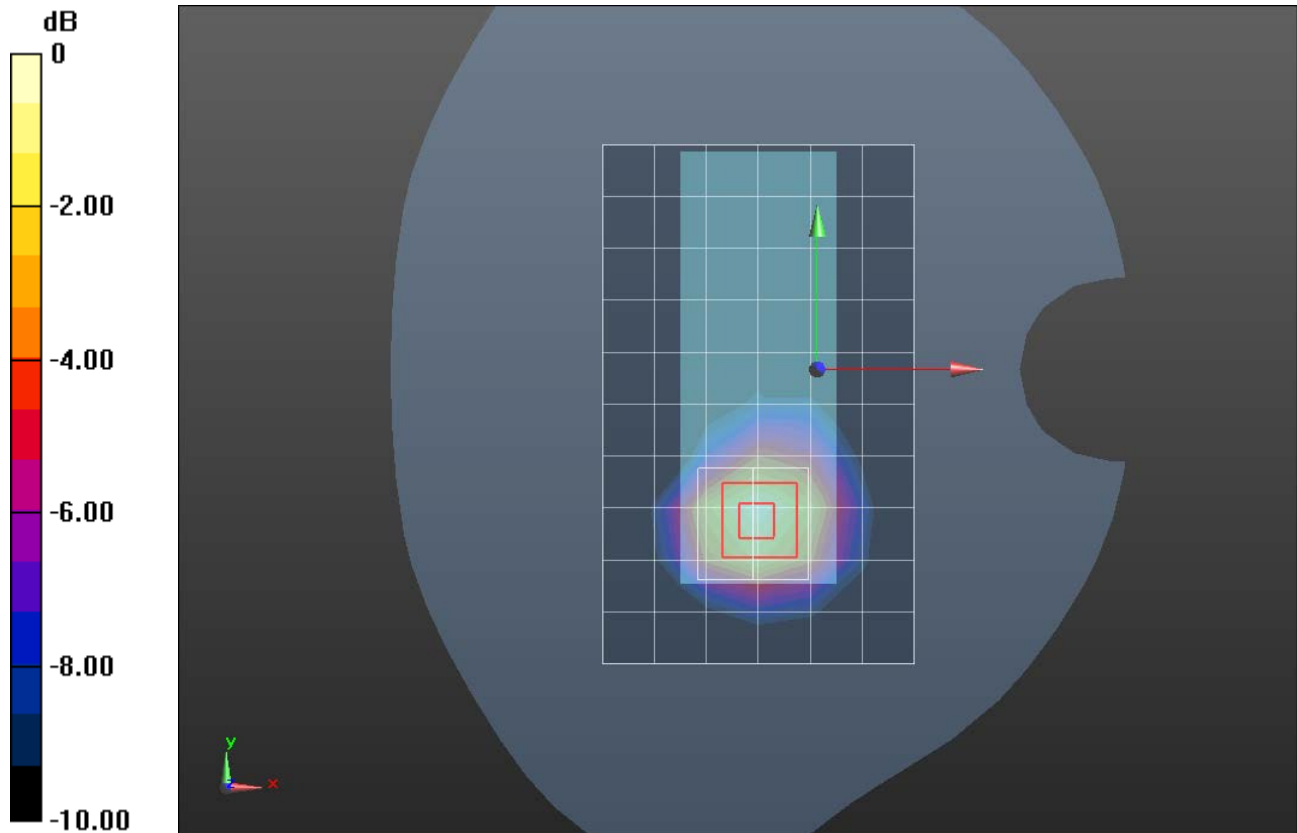
Next-to-Mouth/1xRTT RC3 SO55_ch 600/Zoom Scan (5x5x7)/Cube 0: Measurement grid: dx=8mm, dy=8mm, dz=5mm

Reference Value = 16.35 V/m; Power Drift = -0.02 dB

Peak SAR (extrapolated) = 0.496 W/kg

SAR(1 g) = 0.292 W/kg; SAR(10 g) = 0.163 W/kg

Maximum value of SAR (measured) = 0.377 W/kg



0 dB = 0.377 W/kg = -4.24 dBW/kg