

SAR Plots

- Verification Plots
- SAR Test Plots

DT&C Co., Ltd.

DUT: Dipole 2450 MHz; Type: D2450V2; Serial: D2450V2 - SN:726

Communication System: UID 0, CW; Frequency: 2450 MHz; Duty Cycle: 1:1
Medium parameters used: $f = 2450$ MHz; $\sigma = 1.818$ S/m; $\epsilon_r = 38.846$; $\rho = 1000$ kg/m³
Phantom section: Flat Section

DASY5 Configuration:

Probe: EX3DV4 - SN3933; ConvF(7.84, 7.84, 7.84); Calibrated: 9/27/2019 Electronics: DAE4 Sn1391

Sensor-Surface: 2mm (Mechanical Surface Detection)

Phantom: SAM with CRP_2016_07_22_middle; Type: QD000P40CD; Serial: TP:1786
Measurement SW: DASY52, Version 52.10 (3); SEMCAD X Version 14.6.13 (7474)

Test Date: 2020-01-15; Ambient Temp: 22.0; Tissue Temp: 22.1

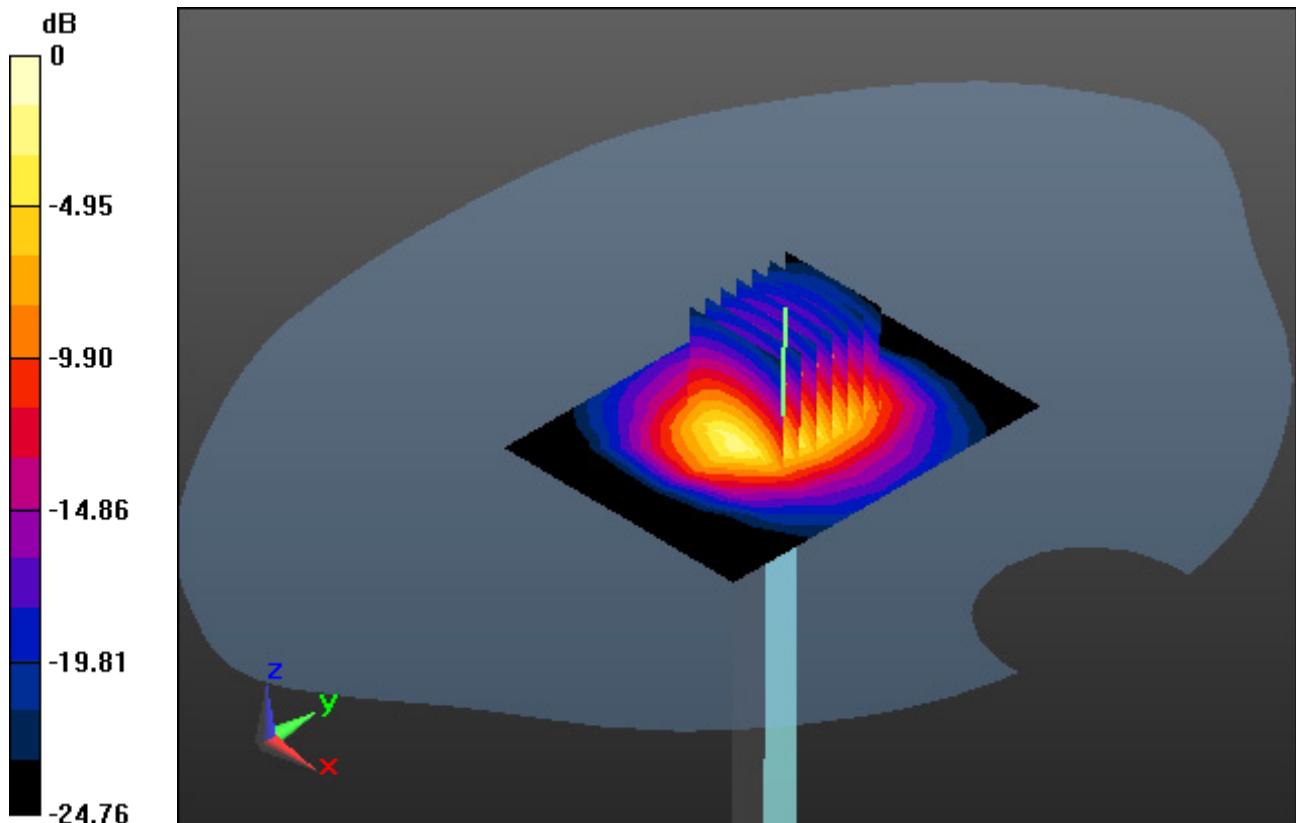
2450 MHz System Head Verification (100 mW)

Area Scan (7x9x1): Measurement grid: dx=12mm, dy=12mm

Zoom Scan (7x7x7)/Cube 0: Measurement grid: dx=5mm, dy=5mm, dz=5mm
Power Drift = -0.03 dB

Peak SAR (extrapolated) = 10.9 W/kg

SAR(1 g) = 5.19 W/kg; SAR(10 g) = 2.42 W/kg



0 dB = 8.8 W/kg

DT&C Co., Ltd.

DUT: Dipole 2450 MHz; Type: D2450V2; Serial: D2450V2 - SN:726

Communication System: UID 0, CW; Frequency: 2450 MHz; Duty Cycle: 1:1
Medium parameters used: $f = 2450$ MHz; $\sigma = 1.913$ S/m; $\epsilon_r = 51.113$; $\rho = 1000$ kg/m³
Phantom section: Flat Section

DASY5 Configuration:

Probe: EX3DV4 - SN3933; ConvF(7.75, 7.75, 7.75); Calibrated: 9/27/2019 Electronics: DAE4 Sn1391

Sensor-Surface: 2mm (Mechanical Surface Detection)

Phantom: SAM with CRP_2013_10_08_right; Type: QD000P40CD; Serial: TP:1785
Measurement SW: DASY52, Version 52.10 (3); SEMCAD X Version 14.6.13 (7474)

Test Date: 2020-01-16; Ambient Temp: 22.3; Tissue Temp: 22.6

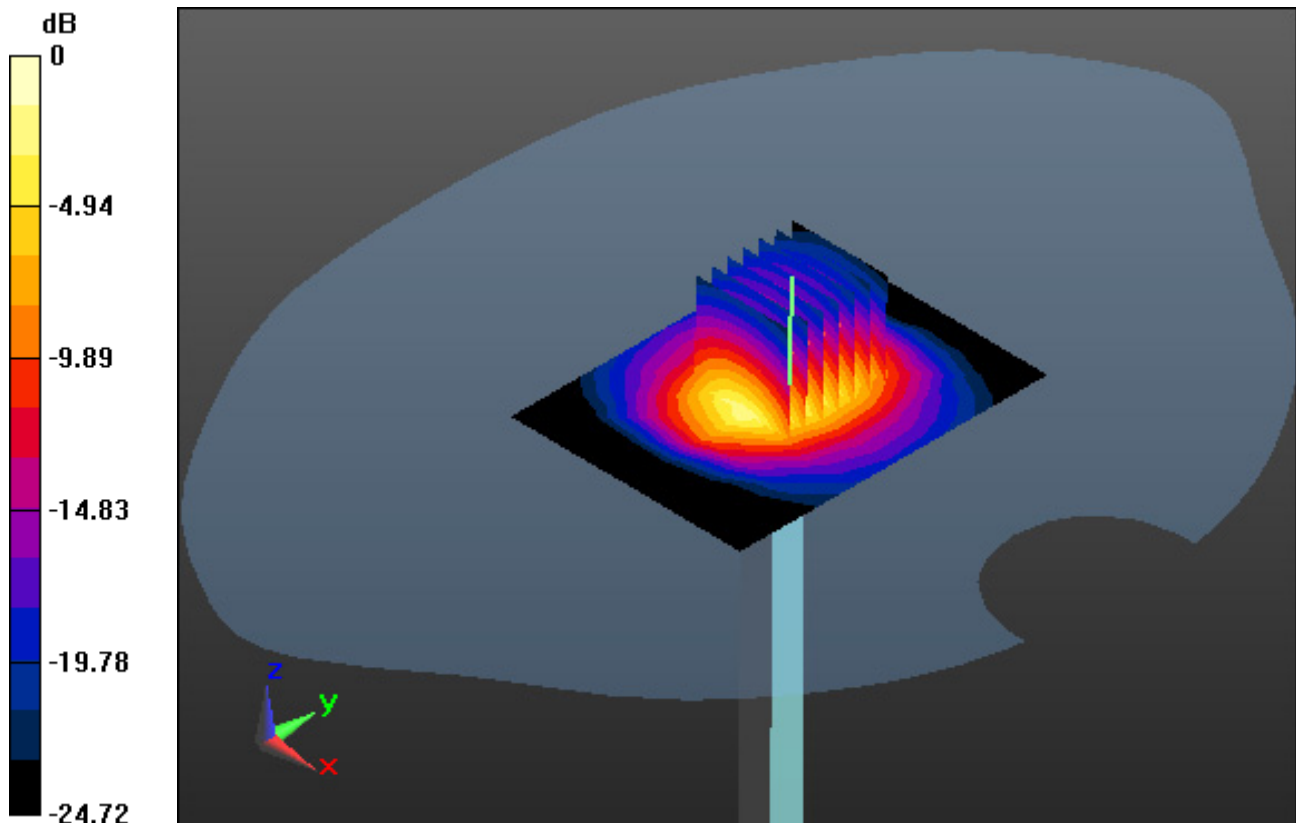
2450 MHz System Body Verification (100 mW)

Area Scan (7x9x1): Measurement grid: dx=12mm, dy=12mm

Zoom Scan (7x7x7)/Cube 0: Measurement grid: dx=5mm, dy=5mm, dz=5mm
Power Drift = 0.07 dB

Peak SAR (extrapolated) = 11.7 W/kg

SAR(1 g) = 5.17 W/kg; SAR(10 g) = 2.43 W/kg



0 dB = 9.12 W/kg

DT&C Co., Ltd.

DUT: Dipole 5000 MHz; Type: D5GHzV2; Serial: D5GHzV2 - SN:1103

Communication System: UID 0, CW (0); Frequency: 5300 MHz; Duty Cycle: 1:1
Medium parameters used: $f = 5300$ MHz; $\sigma = 4.672$ S/m; $\epsilon_r = 35.268$; $\rho = 1000$ kg/m³
Phantom section: Flat Section

DASY5 Configuration:

Probe: EX3DV4 - SN7337; ConvF(5.61, 5.61, 5.61); Calibrated: 11/27/2019 Electronics: DAE4
Sn1394

Sensor-Surface: 1.4mm (Mechanical Surface Detection)

Phantom: SAM-twin middle_2013_09_24; Type: QD000P40CD; Serial: 1782

Measurement SW: DASY52, Version 52.10 (3); SEMCAD X Version 14.6.13 (7474)

Test Date: 2020-01-15; Ambient Temp: 20.5; Tissue Temp: 20.5

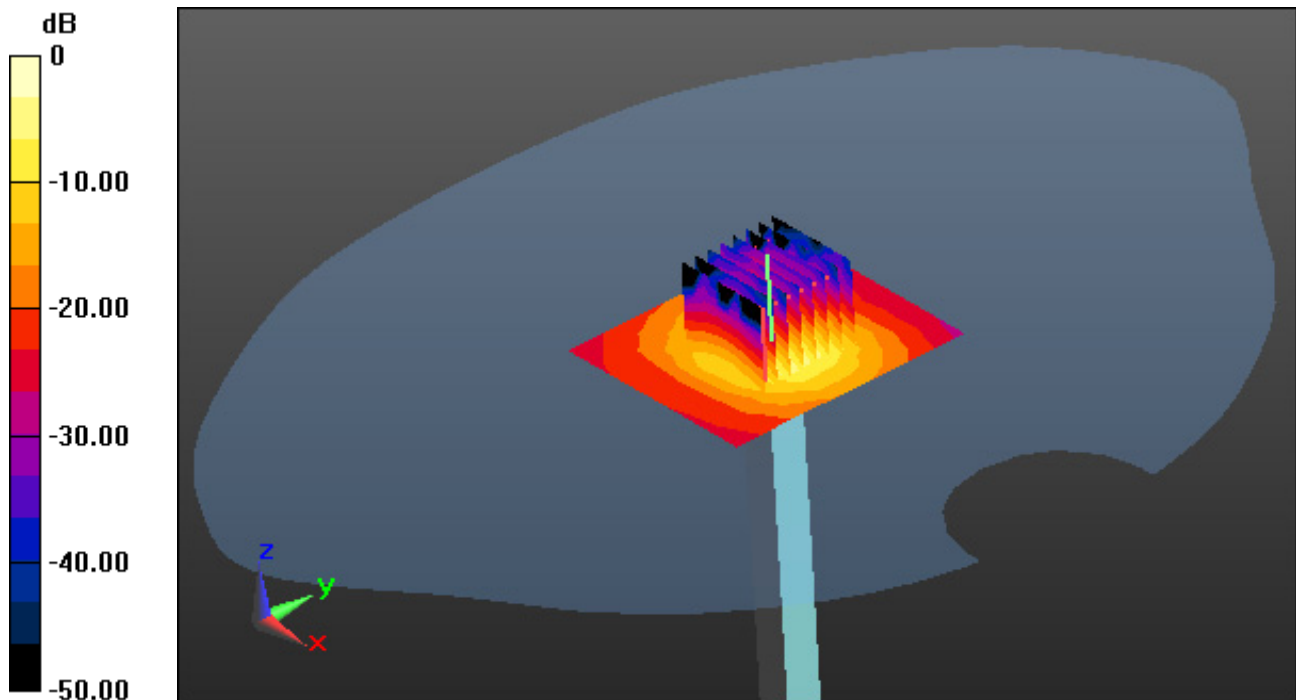
5300 MHz System Head Verification (100 mW)

Area Scan (7x8x1): Measurement grid: dx=10mm, dy=10mm

Zoom Scan (8x8x7)/Cube 0: Measurement grid: dx=4mm, dy=4mm, dz=1.4mm, Graded Ratio: 1.4
Power Drift = 0.07 dB

Peak SAR (extrapolated) = 37.7 W/kg

SAR(1 g) = 8.43 W/kg; SAR(10 g) = 2.36 W/kg



0 dB = 17.8 W/kg

DT&C Co., Ltd.

DUT: Dipole 5000 MHz; Type: D5GHzV2; Serial: D5GHzV2 - SN:1103

Communication System: UID 0, CW (0); Frequency: 5300 MHz; Duty Cycle: 1:1
Medium parameters used: $f = 5300$ MHz; $\sigma = 5.356$ S/m; $\epsilon_r = 50.535$; $\rho = 1000$ kg/m³
Phantom section: Flat Section

DASY5 Configuration:

Probe: EX3DV4 - SN3933; ConvF(4.56, 4.56, 4.56); Calibrated: 9/27/2019 Electronics: DAE4 Sn1391

Sensor-Surface: 1.4mm (Mechanical Surface Detection)

Phantom: SAM with CRP_2016_07_22_middle; Type: QD000P40CD; Serial: TP:1786

Measurement SW: DASY52, Version 52.10 (3); SEMCAD X Version 14.6.13 (7474)

Test Date: 2020-01-17; Ambient Temp: 21.3; Tissue Temp: 21.7

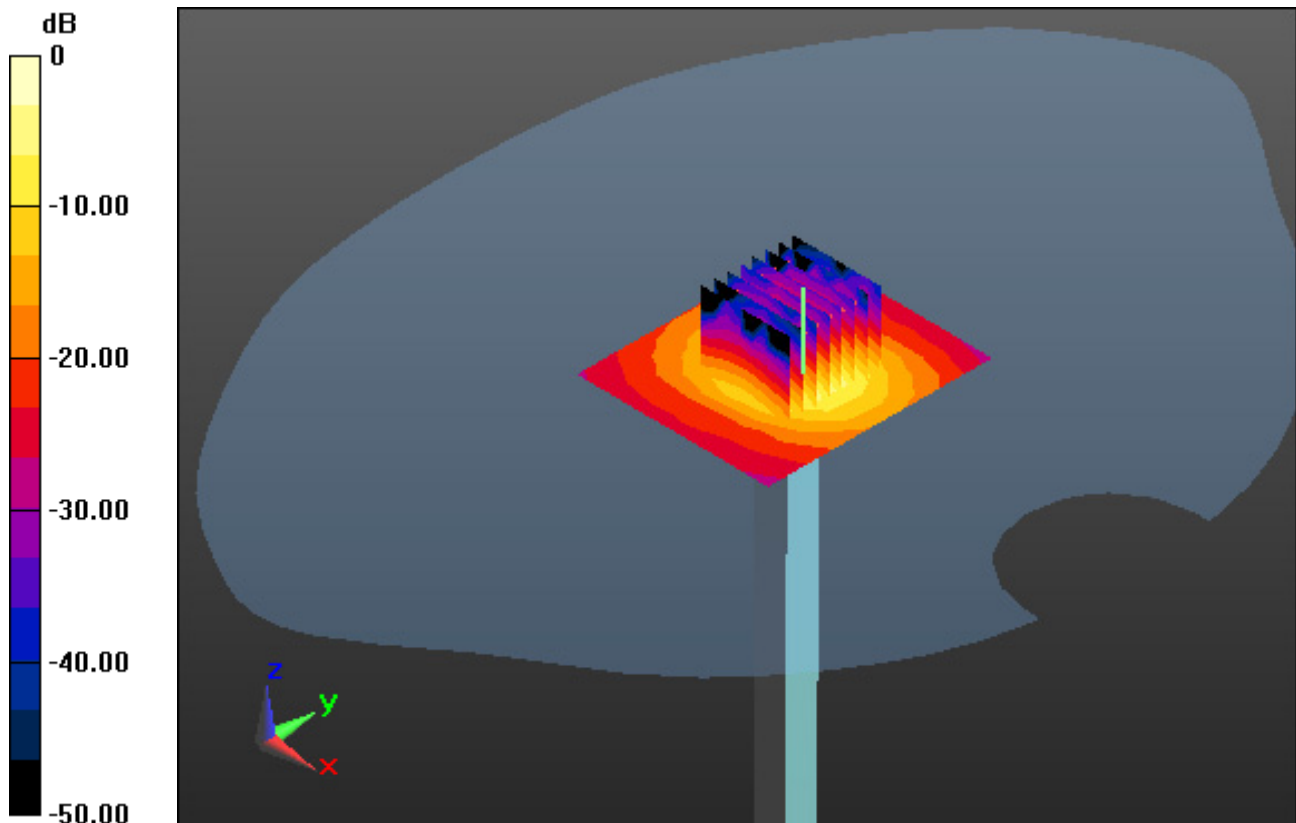
5300 MHz System Body Verification (100 mW)

Area Scan (7x8x1): Measurement grid: dx=10mm, dy=10mm

Zoom Scan (8x8x7)/Cube 0: Measurement grid: dx=4mm, dy=4mm, dz=1.4mm, Graded Ratio:1.4
Power Drift = -0.08 dB

Peak SAR (extrapolated) = 33.7 W/kg

SAR(1 g) = 7.63 W/kg; SAR(10 g) = 2.15 W/kg



0 dB = 19.8 W/kg

DT&C Co., Ltd.

DUT: Dipole 5000 MHz; Type: D5GHzV2; Serial: D5GHzV2 - SN:1103

Communication System: UID 0, CW (0); Frequency: 5500 MHz; Duty Cycle: 1:1
Medium parameters used: $f = 5500$ MHz; $\sigma = 4.887$ S/m; $\epsilon_r = 35.759$; $\rho = 1000$ kg/m³
Phantom section: Flat Section

DASY5 Configuration:

Probe: EX3DV4 - SN7337; ConvF(5.15, 5.15, 5.15); Calibrated: 11/27/2019 Electronics: DAE4
Sn1394

Sensor-Surface: 1.4mm (Mechanical Surface Detection)

Phantom: SAM-twin middle_2013_09_24; Type: QD000P40CD; Serial: 1782

Measurement SW: DASY52, Version 52.10 (3); SEMCAD X Version 14.6.13 (7474)

Test Date: 2020-01-16; Ambient Temp: 20.7; Tissue Temp: 20.5

5500 MHz System Head Verification (100 mW)

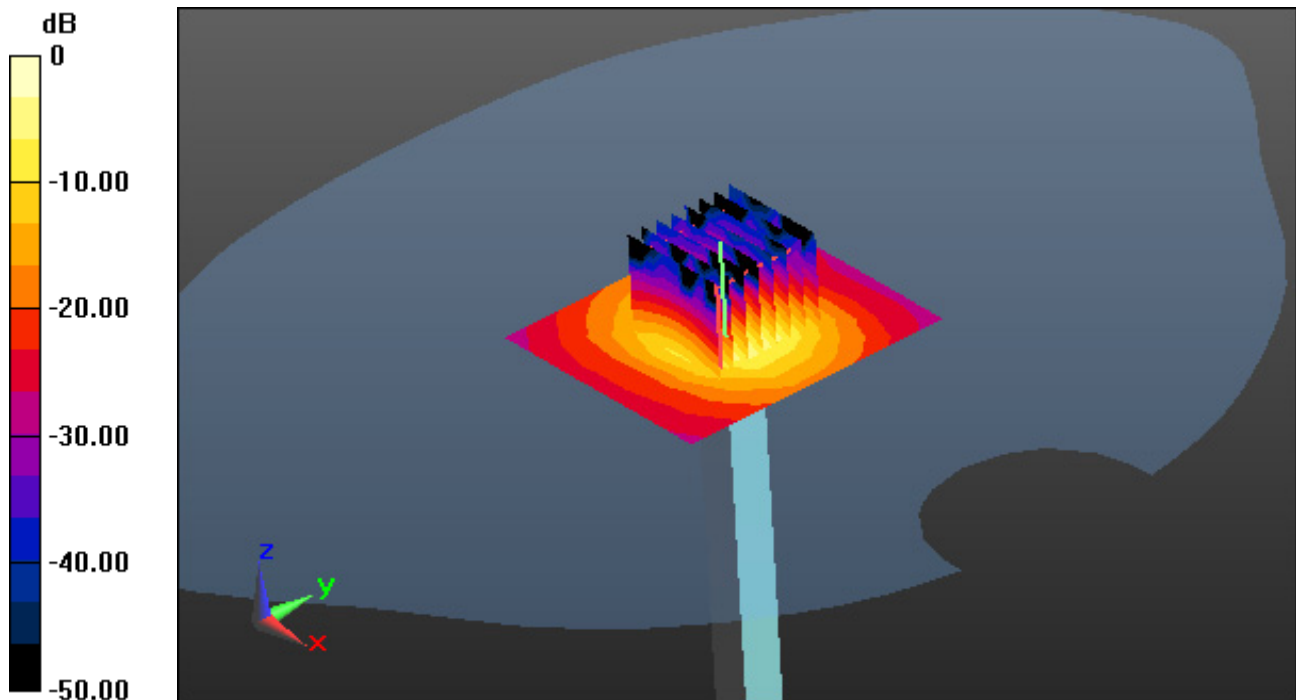
Area Scan (7x8x1): Measurement grid: dx=10mm, dy=10mm

Zoom Scan (8x8x7)/Cube 0: Measurement grid: dx=4mm, dy=4mm, dz=1.4mm, Graded Ratio: 1.4

Power Drift = -0.11 dB

Peak SAR (extrapolated) = 37.8 W/kg

SAR(1 g) = 8.09 W/kg; SAR(10 g) = 2.28 W/kg



DT&C Co., Ltd.

DUT: Dipole 5000 MHz; Type: D5GHzV2; Serial: D5GHzV2 - SN:1103

Communication System: UID 0, CW (0); Frequency: 5500 MHz; Duty Cycle: 1:1
Medium parameters used: $f = 5500$ MHz; $\sigma = 5.516$ S/m; $\epsilon_r = 49.141$; $\rho = 1000$ kg/m³
Phantom section: Flat Section

DASY5 Configuration:

Probe: EX3DV4 - SN3933; ConvF(4.2, 4.2, 4.2); Calibrated: 9/27/2019 Electronics: DAE4 Sn1391
Sensor-Surface: 1.4mm (Mechanical Surface Detection)
Phantom: SAM with CRP_2016_07_22_middle; Type: QD000P40CD; Serial: TP:1786
Measurement SW: DASY52, Version 52.10 (3); SEMCAD X Version 14.6.13 (7474)

Test Date: 2020-01-20; Ambient Temp: 21.8; Tissue Temp: 22.1

5500 MHz System Body Verification (100 mW)

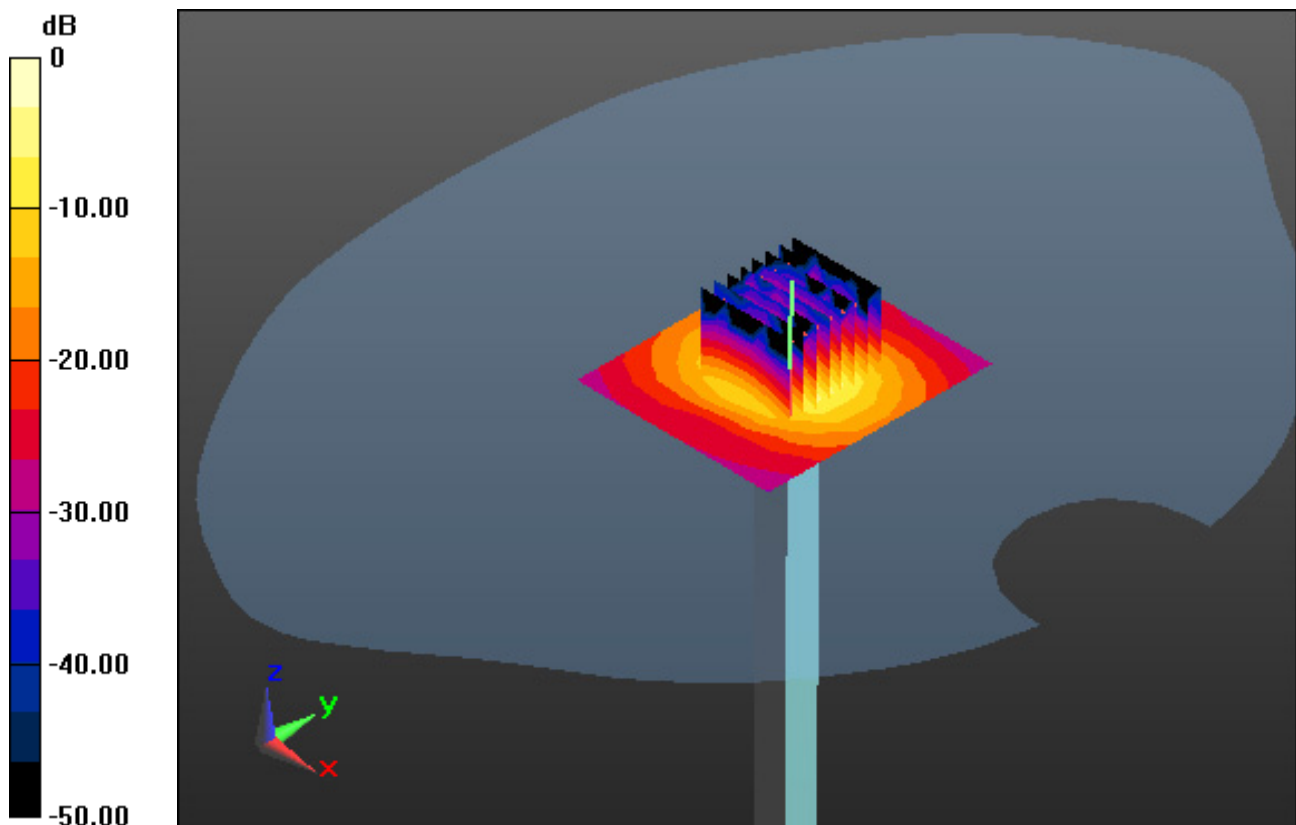
Area Scan (7x8x1): Measurement grid: dx=10mm, dy=10mm

Zoom Scan (8x8x7)/Cube 0: Measurement grid: dx=4mm, dy=4mm, dz=1.4mm, Graded Ratio:1.4

Power Drift = 0.04 dB

Peak SAR (extrapolated) = 36.1 W/kg

SAR(1 g) = 7.81 W/kg; SAR(10 g) = 2.19 W/kg



0 dB = 18.3 W/kg

DT&C Co., Ltd.

DUT: Dipole 5000 MHz; Type: D5GHzV2; Serial: D5GHzV2 - SN:1103

Communication System: UID 0, CW (0); Frequency: 5800 MHz; Duty Cycle: 1:1
Medium parameters used: $f = 5800$ MHz; $\sigma = 5.23$ S/m; $\epsilon_r = 35.257$; $\rho = 1000$ kg/m³
Phantom section: Flat Section

DASY5 Configuration:

Probe: EX3DV4 - SN7337; ConvF(5.17, 5.17, 5.17); Calibrated: 11/27/2019 Electronics: DAE4
Sn1394

Sensor-Surface: 1.4mm (Mechanical Surface Detection)

Phantom: SAM-twin middle_2013_09_24; Type: QD000P40CD; Serial: 1782

Measurement SW: DASY52, Version 52.10 (3); SEMCAD X Version 14.6.13 (7474)

Test Date: 2020-01-17; Ambient Temp: 20.4; Tissue Temp: 20.5

5800 MHz System Head Verification (100 mW)

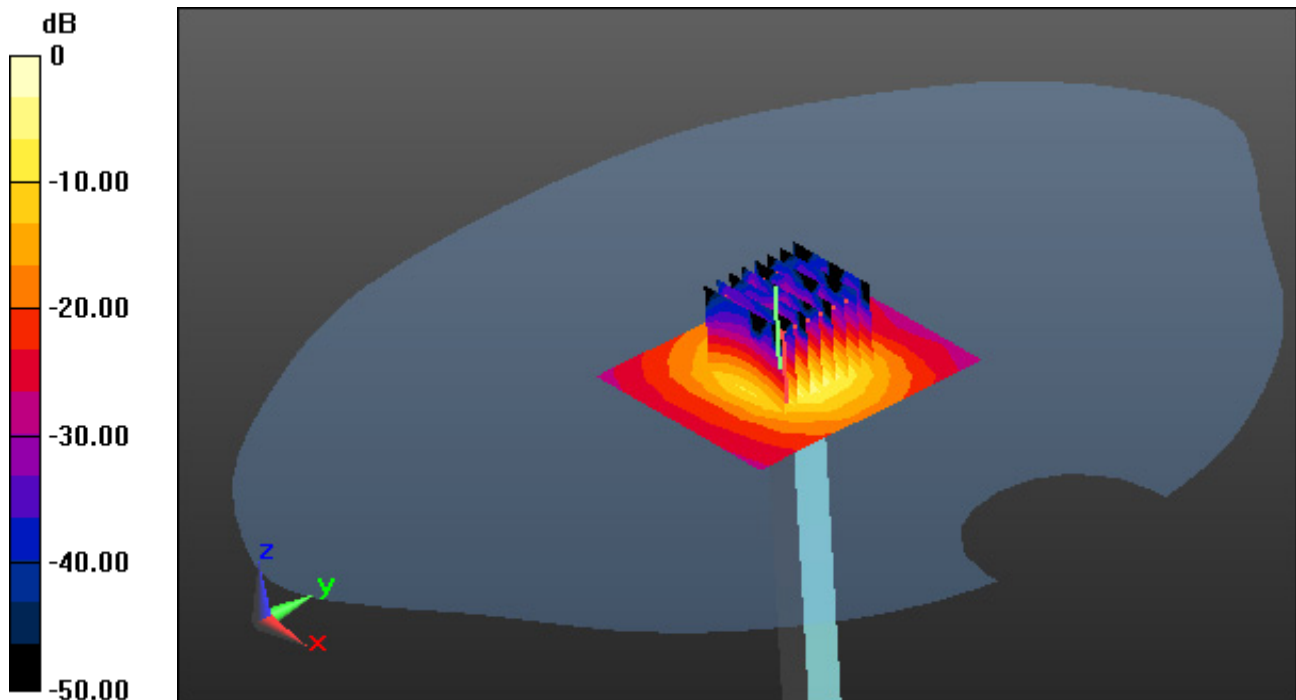
Area Scan (7x8x1): Measurement grid: dx=10mm, dy=10mm

Zoom Scan (8x8x7)/Cube 0: Measurement grid: dx=4mm, dy=4mm, dz=1.4mm, Graded Ratio: 1.4

Power Drift = -0.01 dB

Peak SAR (extrapolated) = 33.5 W/kg

SAR(1 g) = 8.03 W/kg; SAR(10 g) = 2.29 W/kg



0 dB = 20.0 W/kg

DT&C Co., Ltd.

DUT: Dipole 5000 MHz; Type: D5GHzV2; Serial: D5GHzV2 - SN:1103

Communication System: UID 0, CW (0); Frequency: 5800 MHz; Duty Cycle: 1:1
Medium parameters used: $f = 5800$ MHz; $\sigma = 5.996$ S/m; $\epsilon_r = 48.825$; $\rho = 1000$ kg/m³
Phantom section: Flat Section

DASY5 Configuration:

Probe: EX3DV4 - SN3933; ConvF(4.13, 4.13, 4.13); Calibrated: 9/27/2019 Electronics: DAE4
Sn1391

Sensor-Surface: 1.4mm (Mechanical Surface Detection)

Phantom: SAM with CRP_2016_07_22_middle; Type: QD000P40CD; Serial: TP:1786
Measurement SW: DASY52, Version 52.10 (3); SEMCAD X Version 14.6.13 (7474)

Test Date: 2020-01-21; Ambient Temp: 21.4; Tissue Temp: 21.1

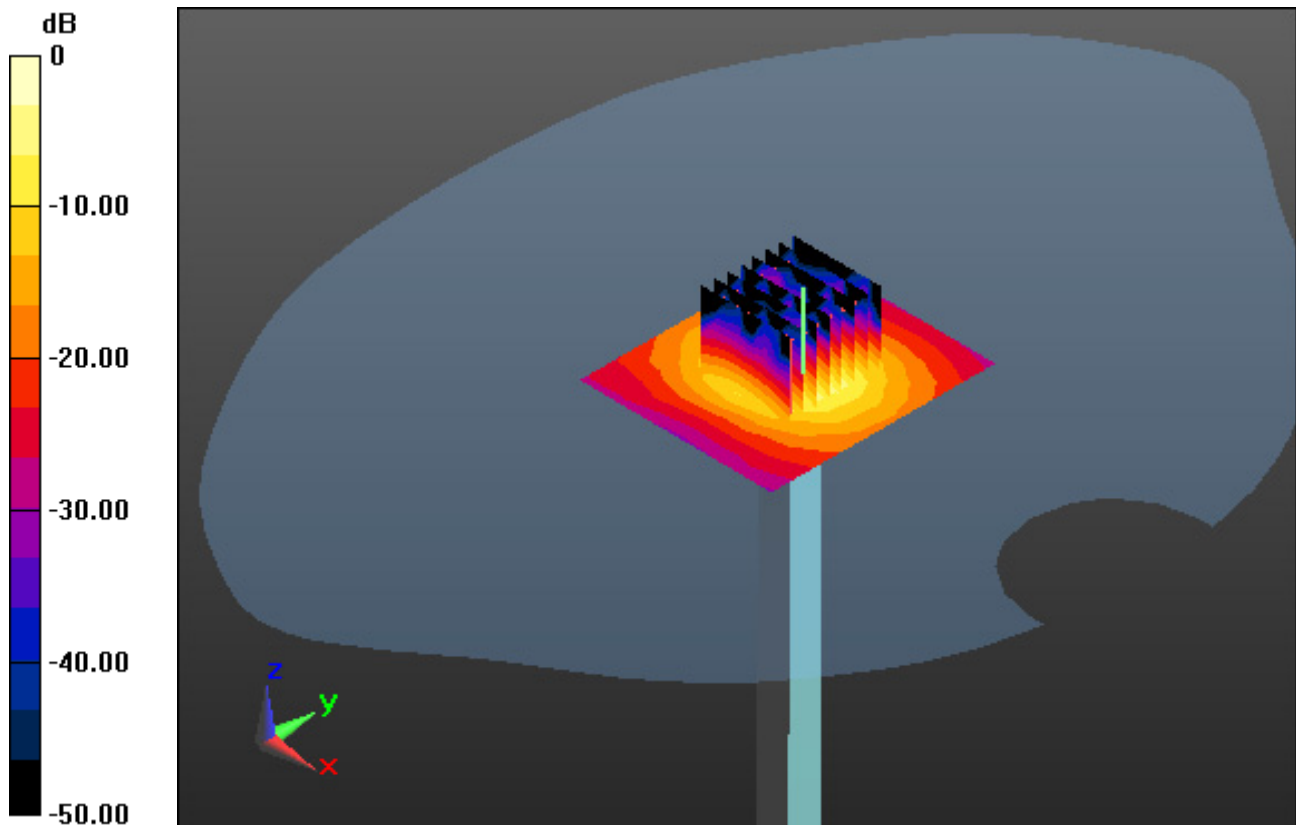
5800 MHz System Body Verification (100 mW)

Area Scan (7x8x1): Measurement grid: dx=10mm, dy=10mm

Zoom Scan (8x8x7)/Cube 0: Measurement grid: dx=4mm, dy=4mm, dz=1.4mm, Graded Ratio:1.4
Power Drift = -0.04 dB

Peak SAR (extrapolated) = 34.3 W/kg

SAR(1 g) = 7.73 W/kg; SAR(10 g) = 2.13 W/kg



0 dB = 17.5 W/kg

DT&C Co., Ltd.

DUT: LM-V601V; Type: Bar

Communication System: UID 0, 2.4 GHz W-LAN (0); Frequency: 2437 MHz; Duty Cycle: 1:1
Medium parameters used: $f = 2437$ MHz; $\sigma = 1.803$ S/m; $\epsilon_r = 38.889$; $\rho = 1000$ kg/m³
Phantom section: Right Section

DASY5 Configuration:

Probe: EX3DV4 - SN3933; ConvF(7.84, 7.84, 7.84); Calibrated: 9/27/2019 Electronics: DAE4
Sn1391

Sensor-Surface: 2mm (Mechanical Surface Detection)

Phantom: SAM with CRP_2016_07_22_middle; Type: QD000P40CD; Serial: TP:1786
Measurement SW: DASY52, Version 52.10 (3); SEMCAD X Version 14.6.13 (7474)

Test Date: 2020-01-15; Ambient Temp: 22.0; Tissue Temp: 22.1

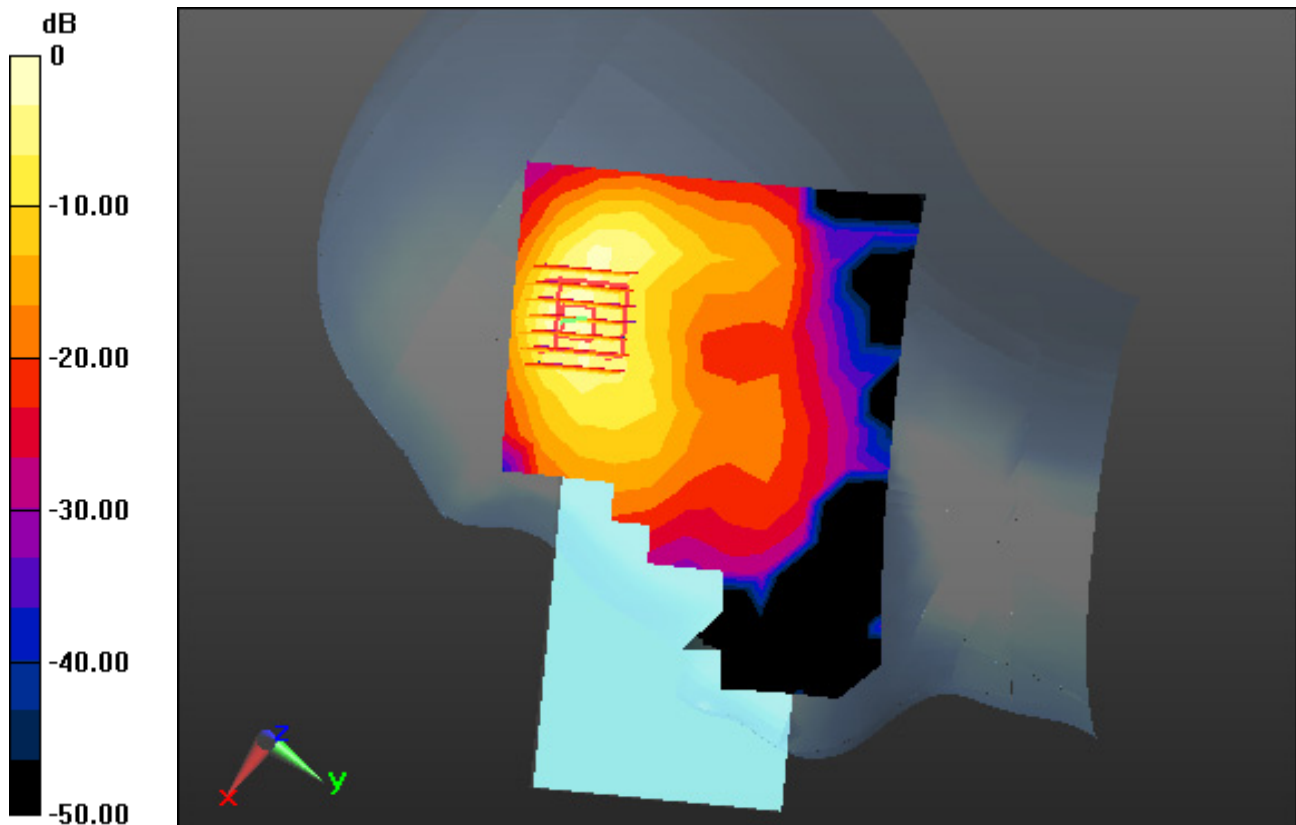
Right Touch, WLAN(802.11b) Ch. 6, Ant Internal, Standard Battery

Area Scan (11x17x1): Measurement grid: dx=12mm, dy=12mm

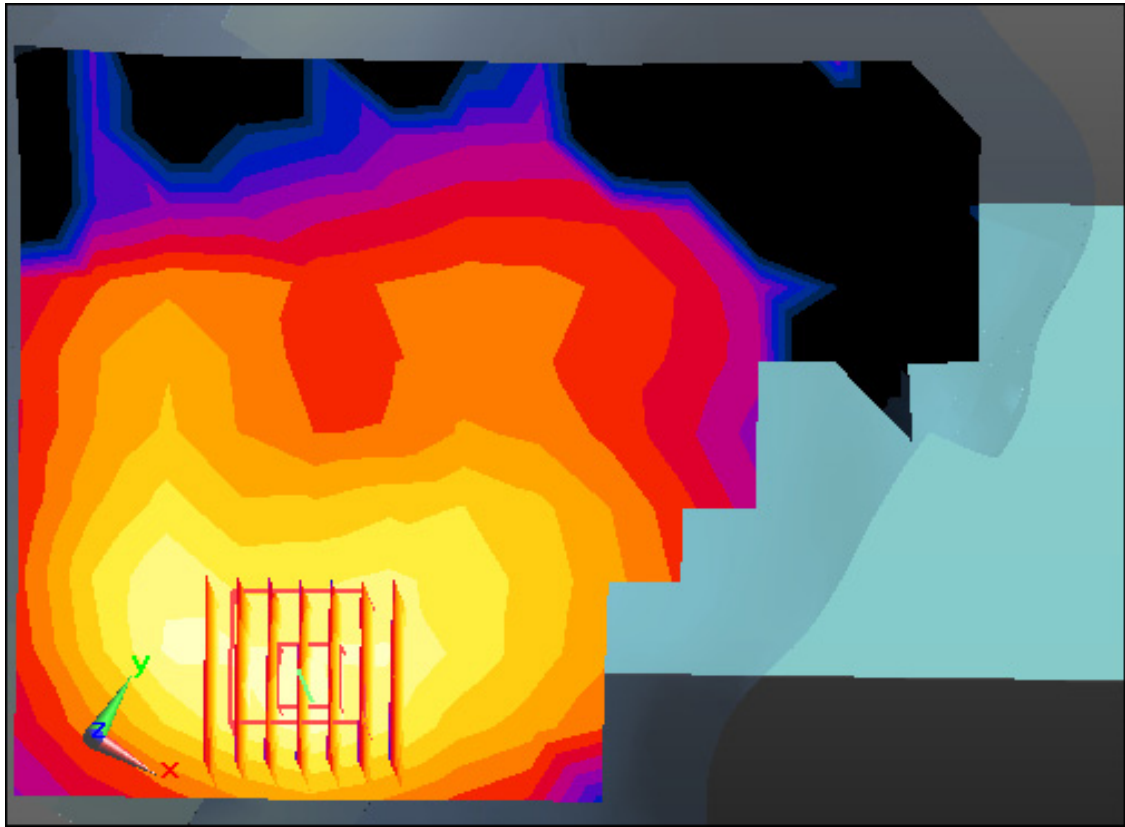
Zoom Scan (7x7x7)/Cube 0: Measurement grid: dx=5mm, dy=5mm, dz=5mm
Power Drift = -0.12 dB

Peak SAR (extrapolated) = 1.89 W/kg

SAR(1 g) = 0.668 W/kg; SAR(10 g) = 0.257 W/kg



0 dB = 1.11 W/kg



Enlarged Plot for A1

DT&C Co., Ltd.

DUT: LM-V601V; Type: Bar

Communication System: UID 0, W-LAN_5 GHz(FCC) (0); Frequency: 5320 MHz; Duty Cycle: 1:1
Medium parameters used: $f = 5320$ MHz; $\sigma = 4.696$ S/m; $\epsilon_r = 35.219$; $\rho = 1000$ kg/m³
Phantom section: Right Section

DASY5 Configuration:

Probe: EX3DV4 - SN7337; ConvF(5.61, 5.61, 5.61); Calibrated: 11/27/2019 Electronics: DAE4
Sn1394

Sensor-Surface: 1.4mm (Mechanical Surface Detection)

Phantom: SAM-twin middle_2013_09_24; Type: QD000P40CD; Serial: 1782

Measurement SW: DASY52, Version 52.10 (3); SEMCAD X Version 14.6.13 (7474)

Test Date: 2020-01-15; Ambient Temp: 20.5; Tissue Temp: 20.5

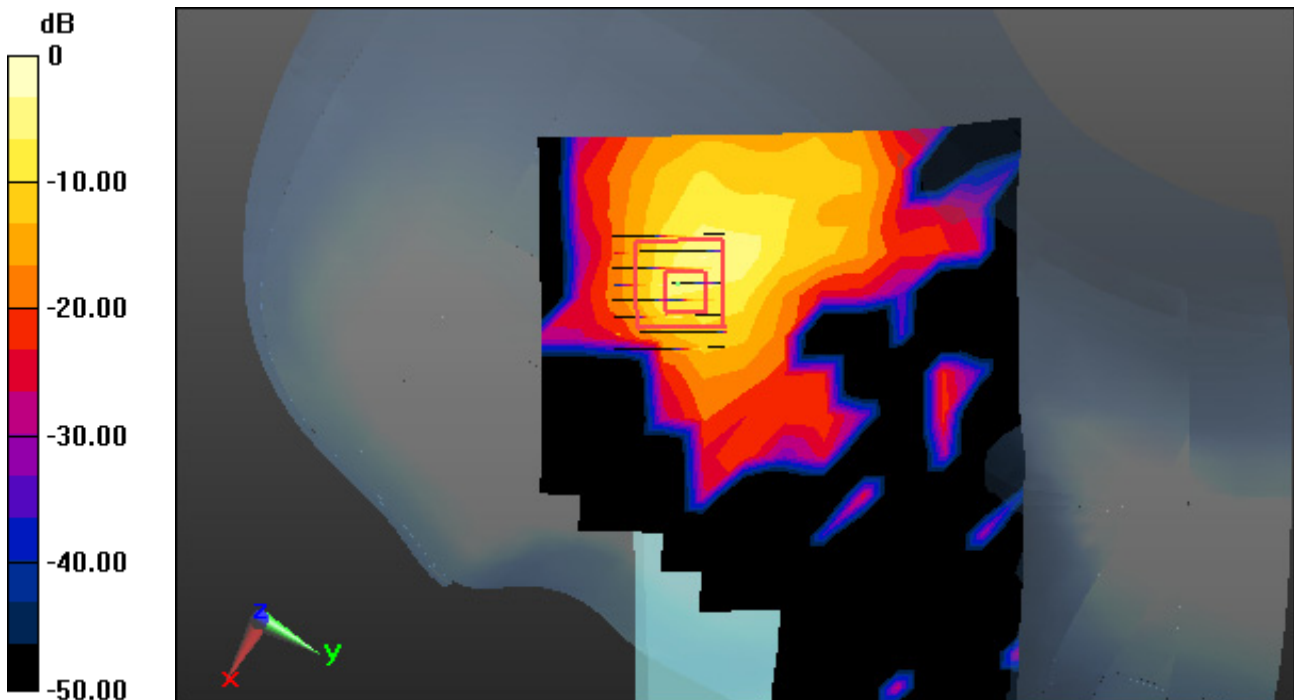
Right Touch, WLAN(802.11a) Ch. 64, Ant Internal, Standard Battery

Area Scan (13x21x1): Measurement grid: dx=10mm, dy=10mm

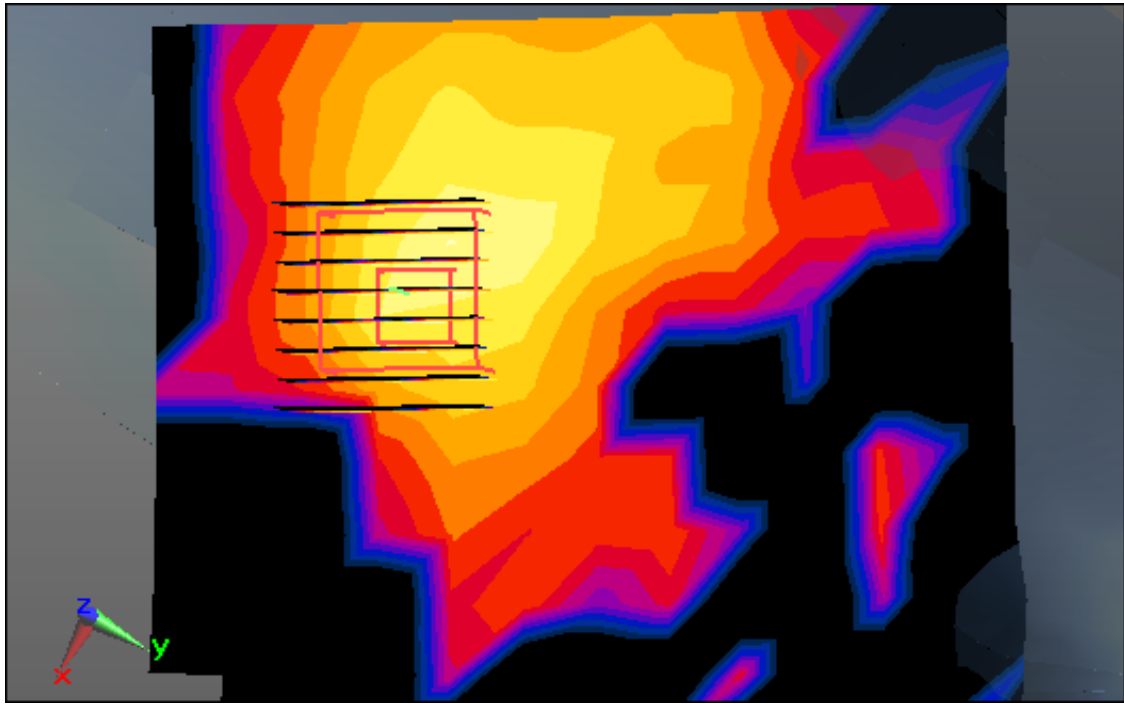
Zoom Scan (8x8x7)/Cube 0: Measurement grid: dx=4mm, dy=4mm, dz=1.4mm, Graded Ratio: 1.4
Power Drift = 0.12 dB

Peak SAR (extrapolated) = 1.26 W/kg

SAR(1 g) = 0.279 W/kg; SAR(10 g) = 0.076 W/kg



0 dB = 0.680 W/kg



Enlarged Plot for A2

DT&C Co., Ltd.

DUT: LM-V601V; Type: Bar

Communication System: UID 0, W-LAN_5 GHz(FCC) (0); Frequency: 5500 MHz; Duty Cycle: 1:1
Medium parameters used: $f = 5500$ MHz; $\sigma = 4.887$ S/m; $\epsilon_r = 35.759$; $\rho = 1000$ kg/m³
Phantom section: Right Section

DASY5 Configuration:

Probe: EX3DV4 - SN7337; ConvF(5.15, 5.15, 5.15); Calibrated: 11/27/2019 Electronics: DAE4
Sn1394

Sensor-Surface: 1.4mm (Mechanical Surface Detection)

Phantom: SAM-twin middle_2013_09_24; Type: QD000P40CD; Serial: 1782

Measurement SW: DASY52, Version 52.10 (3); SEMCAD X Version 14.6.13 (7474)

Test Date: 2020-01-16; Ambient Temp: 20.7; Tissue Temp: 20.5

Right Touch, WLAN(802.11a) Ch. 100, Ant Internal, Standard Battery

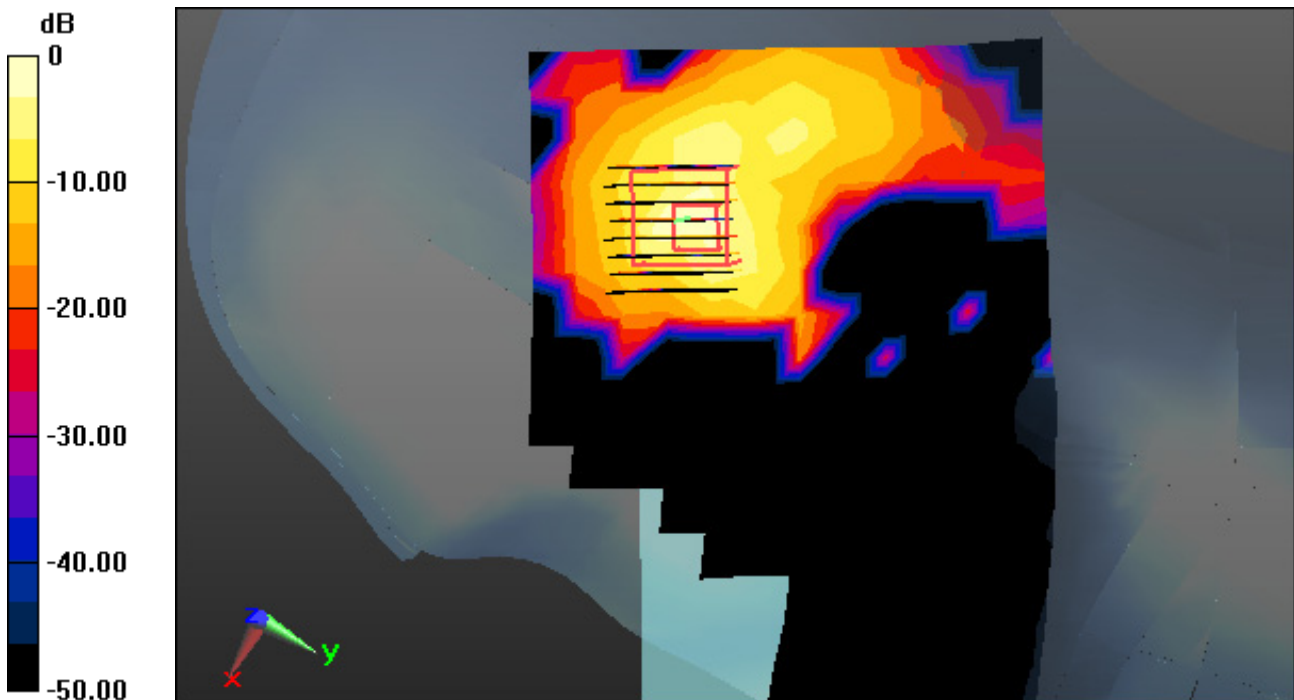
Area Scan (13x21x1): Measurement grid: dx=10mm, dy=10mm

Zoom Scan (8x8x7)/Cube 0: Measurement grid: dx=4mm, dy=4mm, dz=1.4mm, Graded Ratio: 1.4

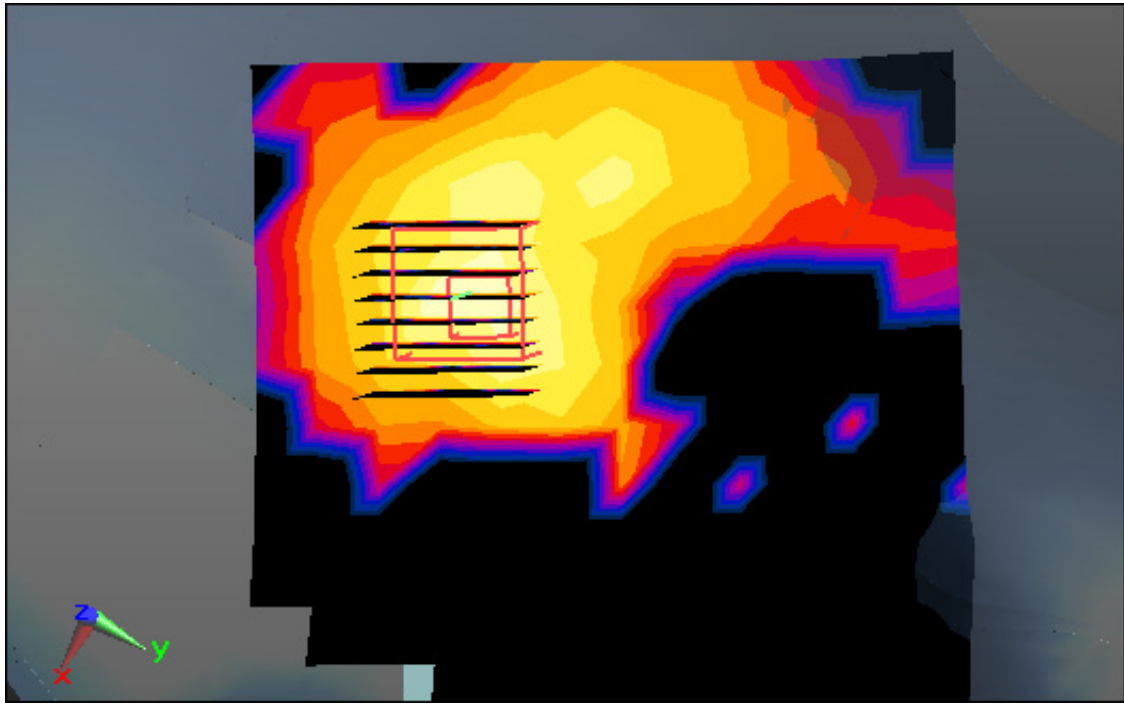
Power Drift = 0.13 dB

Peak SAR (extrapolated) = 0.940 W/kg

SAR(1 g) = 0.205 W/kg; SAR(10 g) = 0.055 W/kg



0 dB = 0.550 W/kg



Enlarged Plot for A3

DT&C Co., Ltd.

DUT: LM-V601V; Type: Bar

Communication System: UID 0, W-LAN_5 GHz(FCC) (0); Frequency: 5785 MHz; Duty Cycle: 1:1
Medium parameters used: $f = 5785$ MHz; $\sigma = 5.293$ S/m; $\epsilon_r = 34.934$; $\rho = 1000$ kg/m³
Phantom section: Right Section

DASY5 Configuration:

Probe: EX3DV4 - SN7337; ConvF(5.17, 5.17, 5.17); Calibrated: 11/27/2019 Electronics: DAE4
Sn1394

Sensor-Surface: 1.4mm (Mechanical Surface Detection)

Phantom: SAM-twin middle_2013_09_24; Type: QD000P40CD; Serial: 1782

Measurement SW: DASY52, Version 52.10 (3); SEMCAD X Version 14.6.13 (7474)

Test Date: 2020-01-17; Ambient Temp: 20.4; Tissue Temp: 20.5

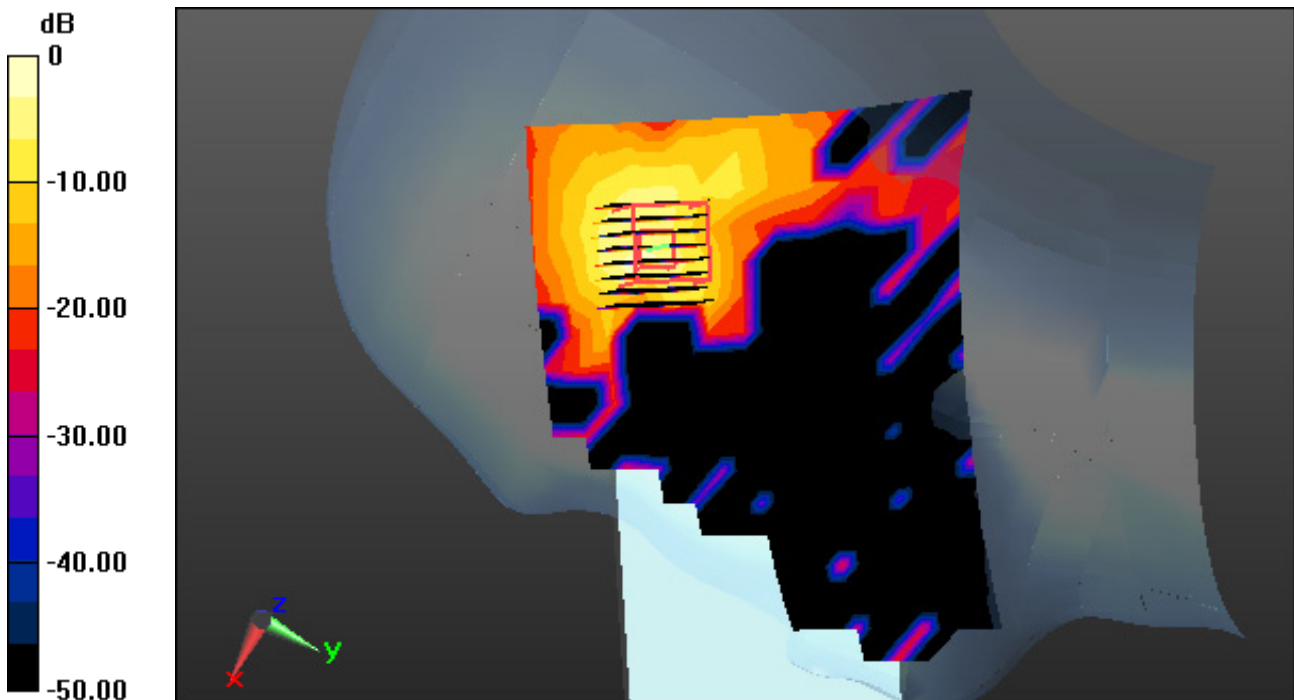
Right Touch, WLAN(802.11a) Ch. 157, Ant Internal, Standard Battery

Area Scan (13x21x1): Measurement grid: dx=10mm, dy=10mm

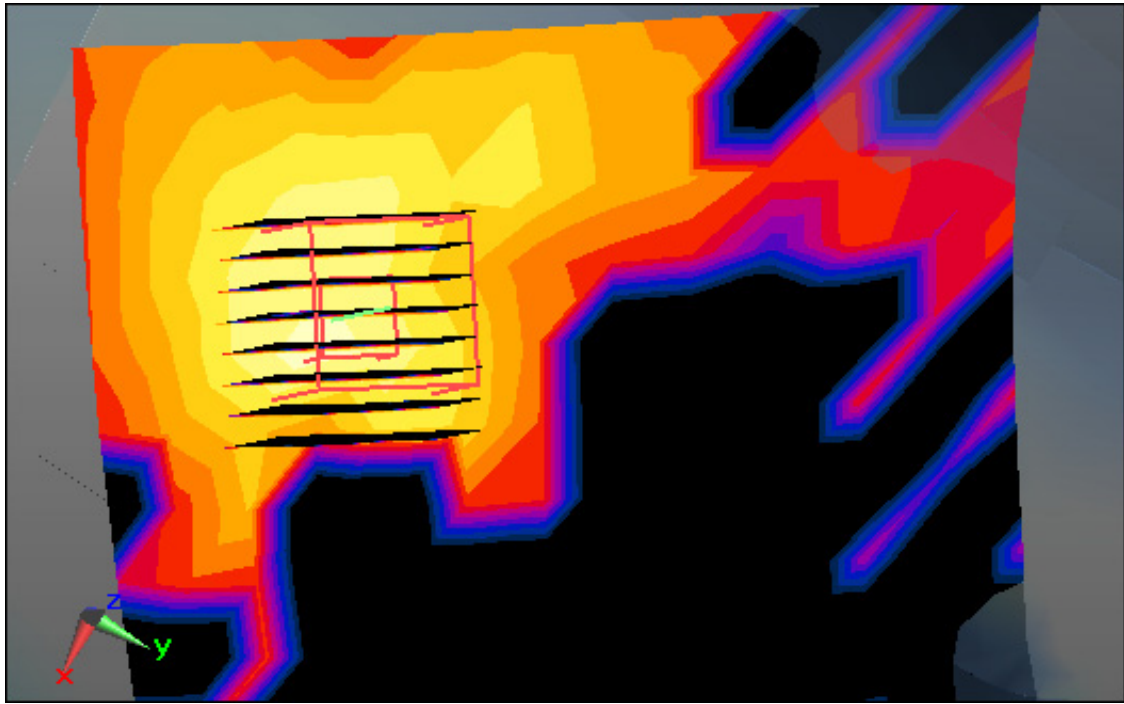
Zoom Scan (8x8x7)/Cube 0: Measurement grid: dx=4mm, dy=4mm, dz=1.4mm, Graded Ratio: 1.4
Power Drift = -0.12 dB

Peak SAR (extrapolated) = 1.04 W/kg

SAR(1 g) = 0.198 W/kg; SAR(10 g) = 0.050 W/kg



0 dB = 0.653 W/kg



Enlarged Plot for A4

DT&C Co., Ltd.

DUT: LM-V600V; Type: Bar

Communication System: UID 0, Bluetooth (0); Frequency: 2441 MHz; Duty Cycle: 1:1.302

Medium parameters used: $f = 2441$ MHz; $\sigma = 1.808$ S/m; $\epsilon_r = 38.875$; $\rho = 1000$ kg/m³

Phantom section: Right Section

DASY5 Configuration:

Probe: EX3DV4 - SN3933; ConvF(7.84, 7.84, 7.84); Calibrated: 9/27/2019 Electronics: DAE4 Sn1391

Sensor-Surface: 2mm (Mechanical Surface Detection)

Phantom: SAM with CRP_2016_07_22_middle; Type: QD000P40CD; Serial: TP:1786

Measurement SW: DASY52, Version 52.10 (3); SEMCAD X Version 14.6.13 (7474)

Test Date: 2020-01-15; Ambient Temp: 22.0; Tissue Temp: 22.1

Right Touch, Bluetooth 1Mbps Ch. 39, Ant Internal, Standard Battery

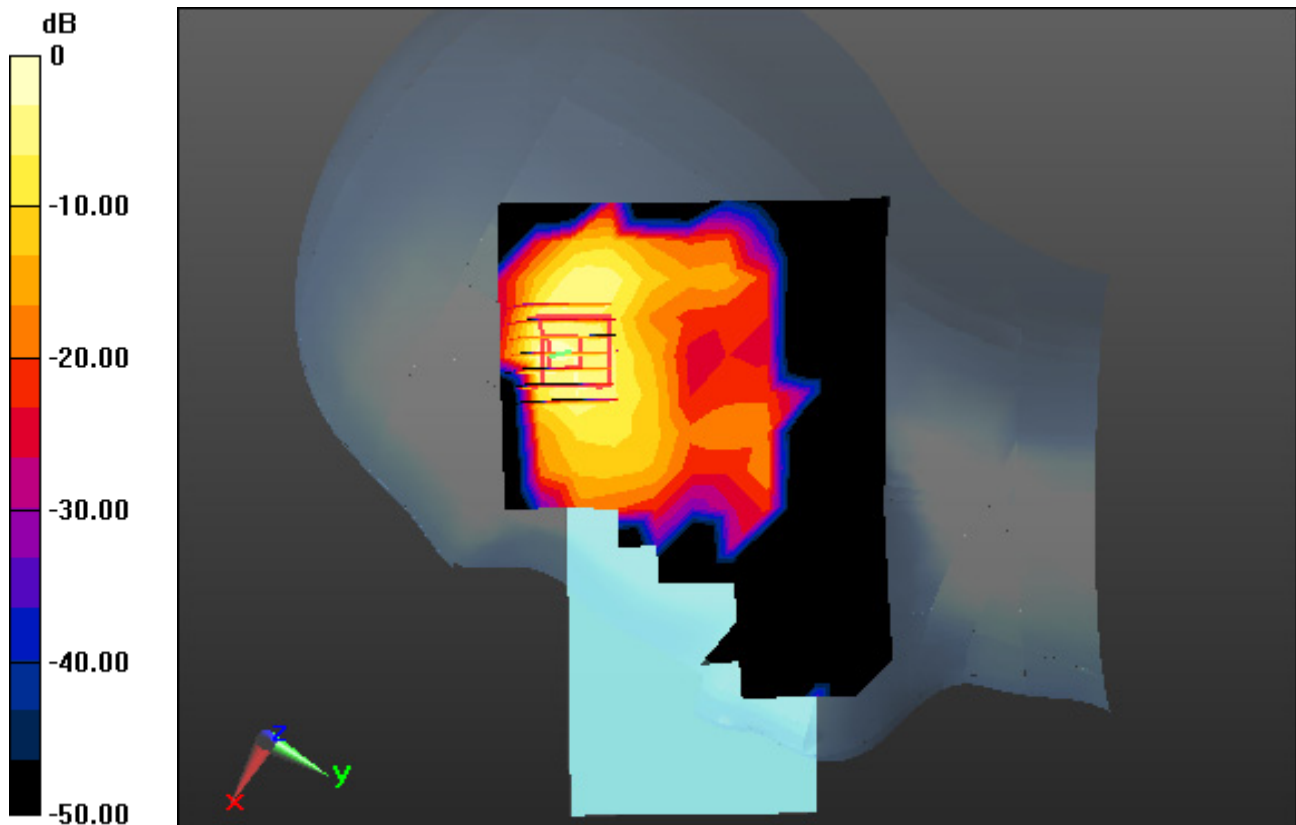
Area Scan (11x17x1): Measurement grid: dx=12mm, dy=12mm

Zoom Scan (7x7x7)/Cube 0: Measurement grid: dx=5mm, dy=5mm, dz=5mm

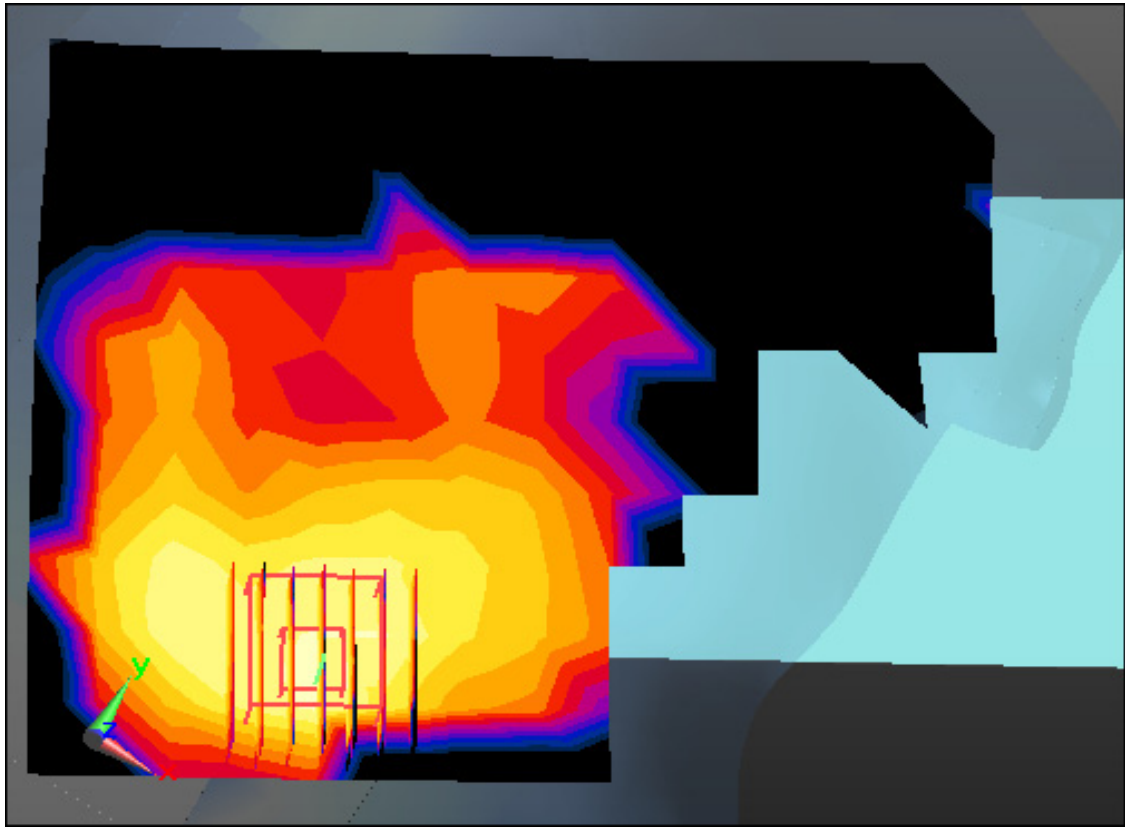
Power Drift = -0.01 dB

Peak SAR (extrapolated) = 0.389 W/kg

SAR(1 g) = 0.139 W/kg; SAR(10 g) = 0.052 W/kg



0 dB = 0.229 W/kg



Enlarged Plot for A5

DT&C Co., Ltd.

DUT: LM-V601V; Type: Bar

Communication System: UID 0, 2.4 GHz W-LAN (0); Frequency: 2437 MHz; Duty Cycle: 1:1
Medium parameters used: $f = 2437$ MHz; $\sigma = 1.898$ S/m; $\epsilon_r = 51.138$; $\rho = 1000$ kg/m³
Phantom section: Flat Section

DASY5 Configuration:

Probe: EX3DV4 - SN3933; ConvF(7.75, 7.75, 7.75); Calibrated: 9/27/2019 Electronics: DAE4
Sn1391

Sensor-Surface: 2mm (Mechanical Surface Detection)

Phantom: SAM with CRP_2013_10_08_right; Type: QD000P40CD; Serial: TP:1785
Measurement SW: DASY52, Version 52.10 (3); SEMCAD X Version 14.6.13 (7474)

Test Date: 2020-01-16; Ambient Temp: 22.3; Tissue Temp: 22.6

1 cm space from Body, Front, WLAN(802.11b) Ch. 6, Ant Internal

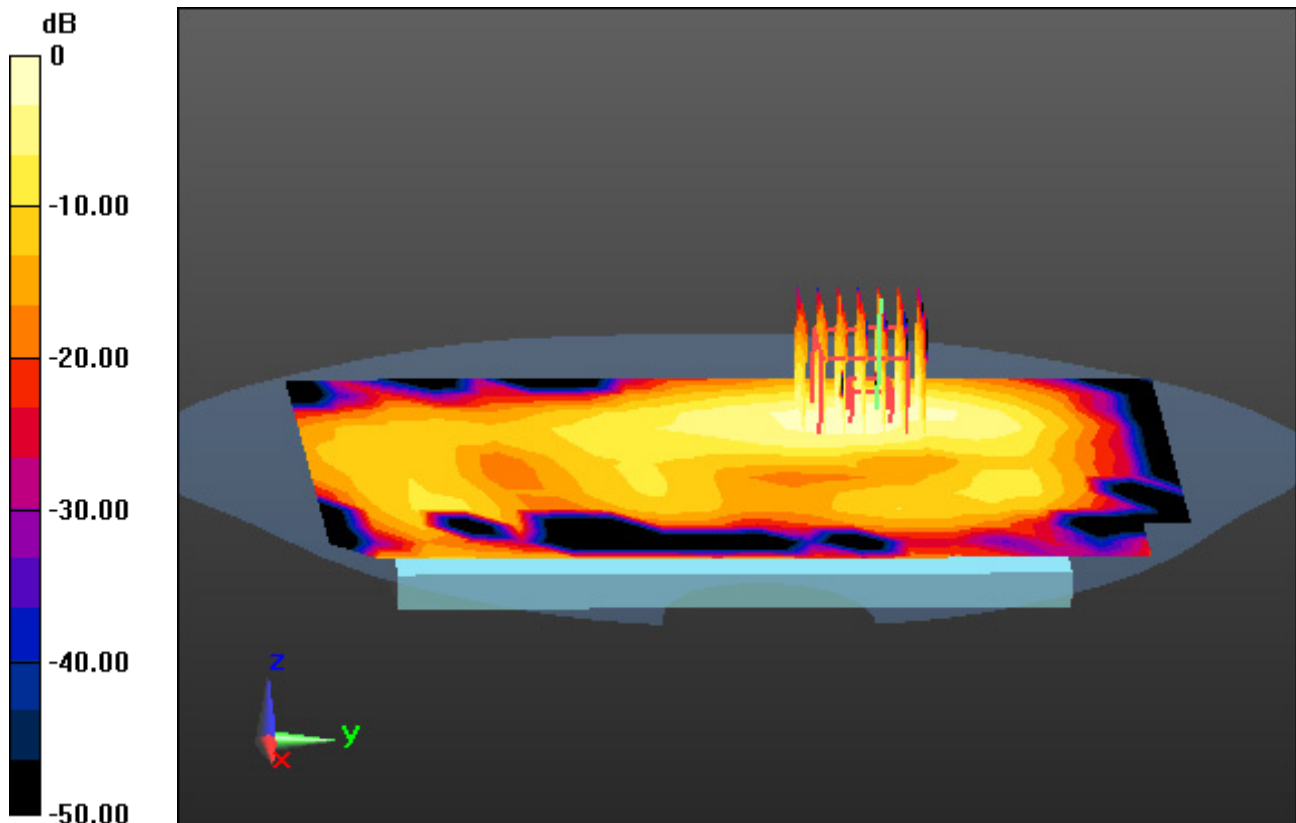
Area Scan (12x19x1): Measurement grid: dx=12mm, dy=12mm

Zoom Scan (7x7x7)/Cube 0: Measurement grid: dx=5mm, dy=5mm, dz=5mm

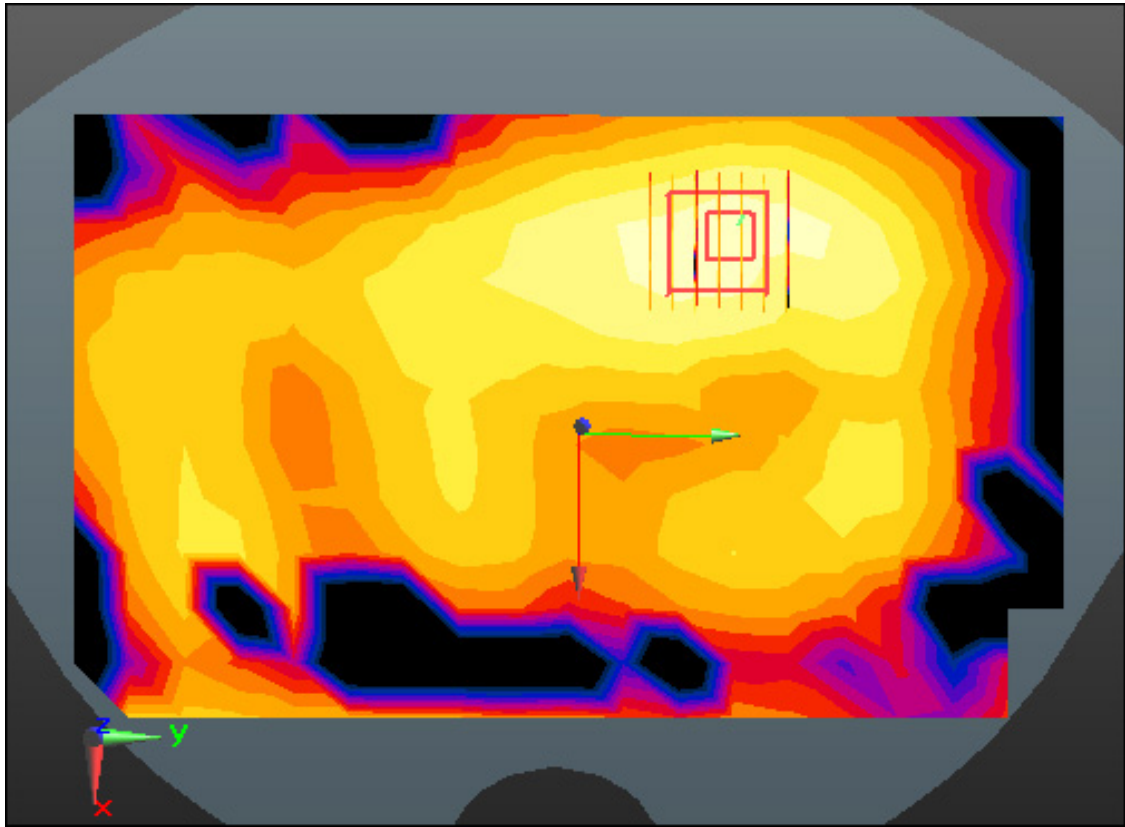
Power Drift = -0.12 dB

Peak SAR (extrapolated) = 0.235 W/kg

SAR(1 g) = 0.109 W/kg; SAR(10 g) = 0.050 W/kg



0 dB = 0.163 W/kg



Enlarged Plot for A6

DT&C Co., Ltd.

DUT: LM-V601V; Type: Bar

Communication System: UID 0, W-LAN_5300 (0); Frequency: 5320 MHz; Duty Cycle: 1:1
Medium parameters used: $f = 5320$ MHz; $\sigma = 5.387$ S/m; $\epsilon_r = 50.478$; $\rho = 1000$ kg/m³
Phantom section: Flat Section

DASY5 Configuration:

Probe: EX3DV4 - SN3933; ConvF(4.56, 4.56, 4.56); Calibrated: 9/27/2019 Electronics: DAE4
Sn1391

Sensor-Surface: 1.4mm (Mechanical Surface Detection)

Phantom: SAM with CRP_2016_07_22_middle; Type: QD000P40CD; Serial: TP:1786

Measurement SW: DASY52, Version 52.10 (3); SEMCAD X Version 14.6.13 (7474)

Test Date: 2020-01-17; Ambient Temp: 21.3; Tissue Temp: 21.7

1 cm space from Body, Rear, WLAN(802.11a) Ch. 64, Ant Internal

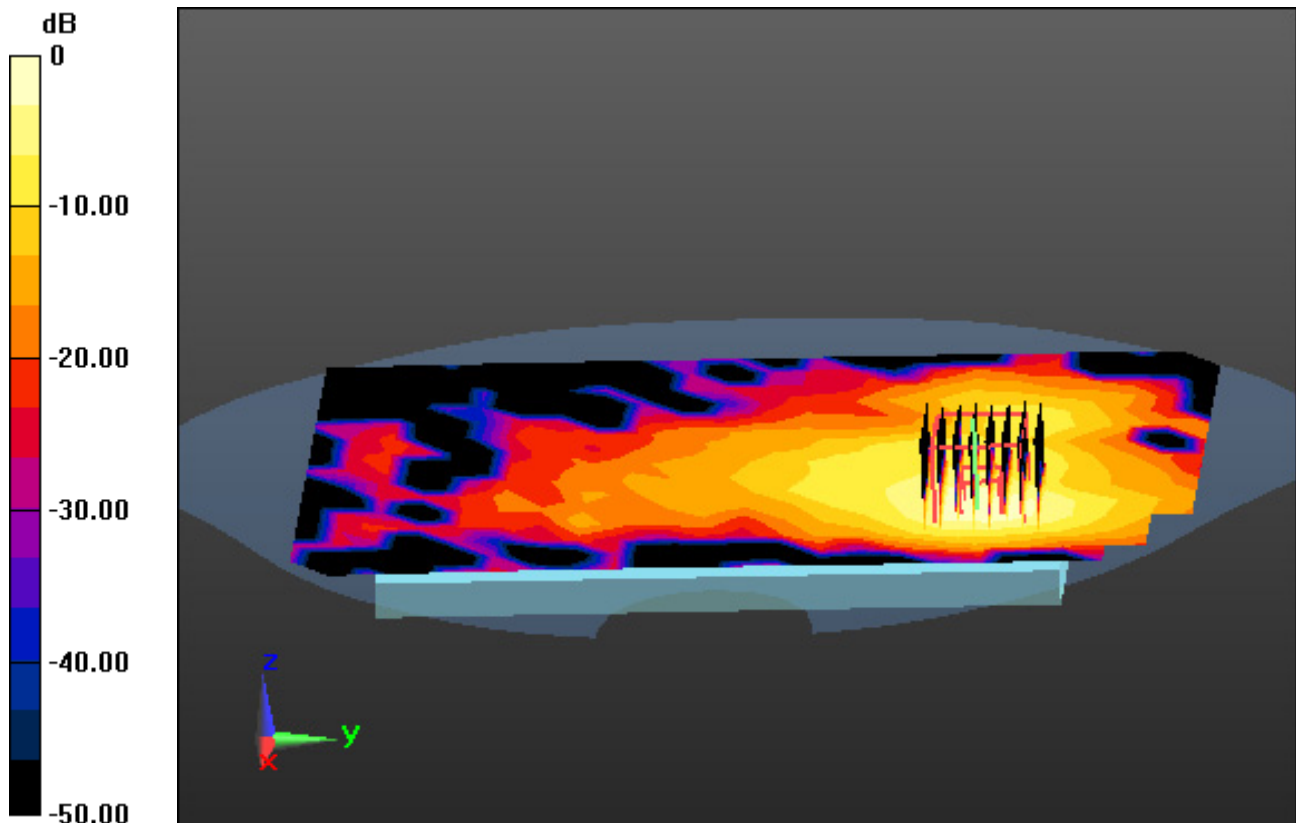
Area Scan (15x23x1): Measurement grid: dx=10mm, dy=10mm

Zoom Scan (8x8x7)/Cube 0: Measurement grid: dx=4mm, dy=4mm, dz=1.4mm, Graded Ratio:1.4

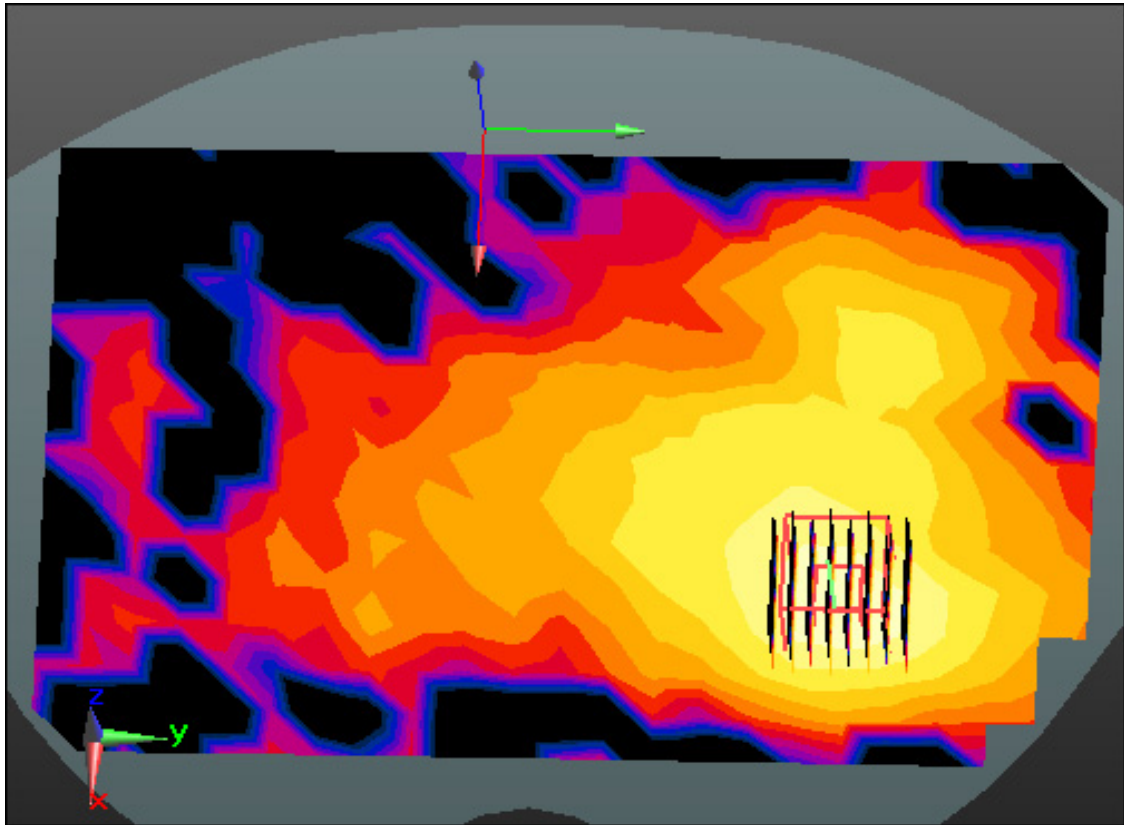
Power Drift = -0.16 dB

Peak SAR (extrapolated) = 0.845 W/kg

SAR(1 g) = 0.224 W/kg; SAR(10 g) = 0.080 W/kg



0 dB = 0.541 W/kg



Enlarged Plot for A7

DT&C Co., Ltd.

DUT: LM-V601V; Type: Bar

Communication System: UID 0, W-LAN_5500 (0); Frequency: 5500 MHz; Duty Cycle: 1:1
Medium parameters used: $f = 5500$ MHz; $\sigma = 5.516$ S/m; $\epsilon_r = 49.141$; $\rho = 1000$ kg/m³
Phantom section: Flat Section

DASY5 Configuration:

Probe: EX3DV4 - SN3933; ConvF(4.2, 4.2, 4.2); Calibrated: 9/27/2019 Electronics: DAE4 Sn1391
Sensor-Surface: 1.4mm (Mechanical Surface Detection)
Phantom: SAM with CRP_2016_07_22_middle; Type: QD000P40CD; Serial: TP:1786
Measurement SW: DASY52, Version 52.10 (3); SEMCAD X Version 14.6.13 (7474)

Test Date: 2020-01-20; Ambient Temp: 21.8; Tissue Temp: 22.1

1 cm space from Body, Rear, WLAN(802.11a) Ch. 100, Ant Internal

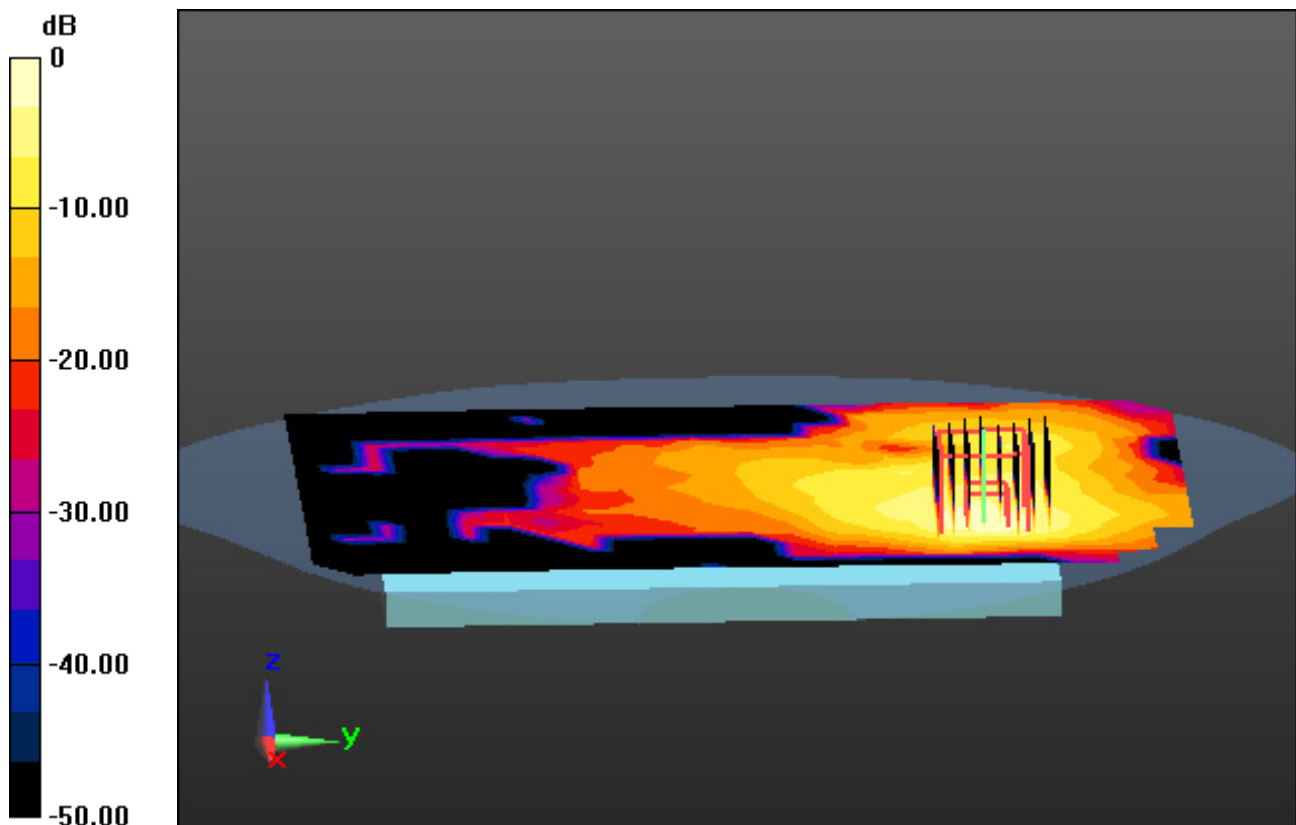
Area Scan (15x23x1): Measurement grid: dx=10mm, dy=10mm

Zoom Scan (8x8x7)/Cube 0: Measurement grid: dx=4mm, dy=4mm, dz=1.4mm, Graded Ratio:1.4

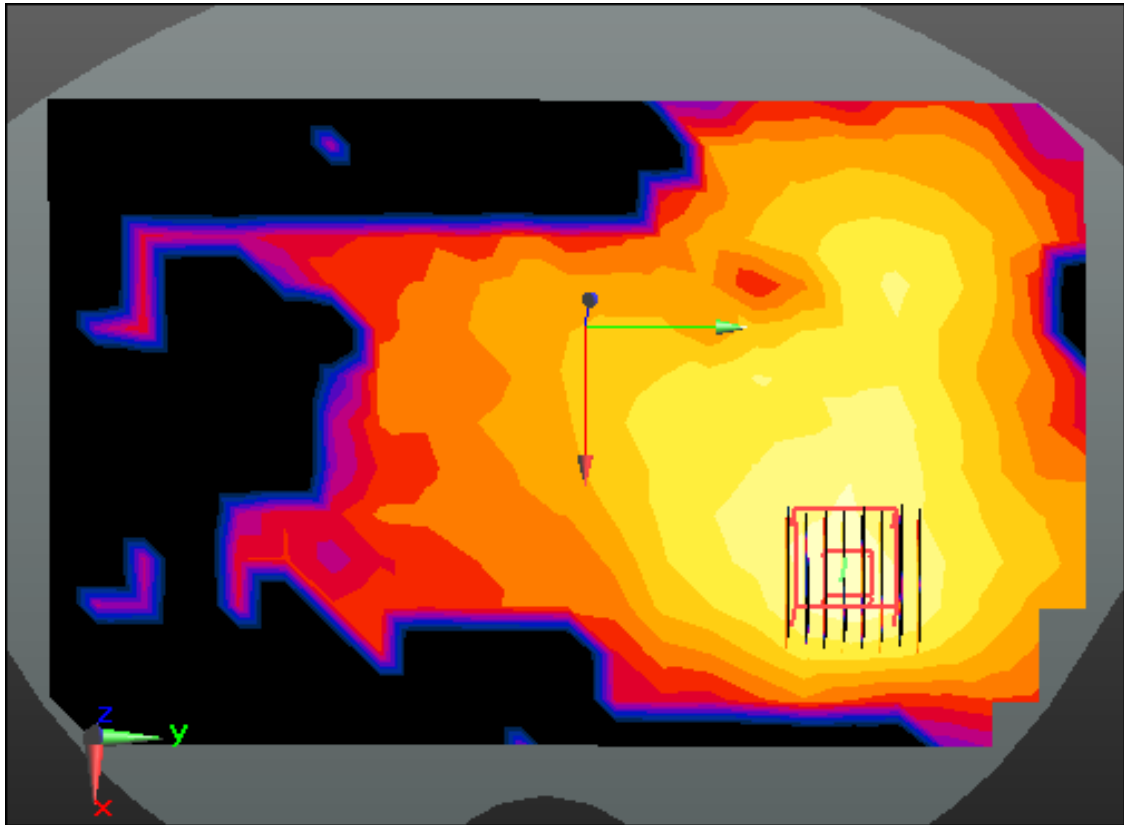
Power Drift = -0.15 dB

Peak SAR (extrapolated) = 0.903 W/kg

SAR(1 g) = 0.226 W/kg; SAR(10 g) = 0.074 W/kg



0 dB = 0.582 W/kg



Enlarged Plot for A8

DT&C Co., Ltd.

DUT: LM-V601V; Type: Bar

Communication System: UID 0, W-LAN_5800 (0); Frequency: 5785 MHz; Duty Cycle: 1:1
Medium parameters used: $f = 5785$ MHz; $\sigma = 5.933$ S/m; $\epsilon_r = 48.826$; $\rho = 1000$ kg/m³
Phantom section: Flat Section

DASY5 Configuration:

Probe: EX3DV4 - SN3933; ConvF(4.13, 4.13, 4.13); Calibrated: 9/27/2019 Electronics: DAE4
Sn1391

Sensor-Surface: 1.4mm (Mechanical Surface Detection)

Phantom: SAM with CRP_2016_07_22_middle; Type: QD000P40CD; Serial: TP:1786
Measurement SW: DASY52, Version 52.10 (3); SEMCAD X Version 14.6.13 (7474)

Test Date: 2020-01-21; Ambient Temp: 21.4; Tissue Temp: 21.1

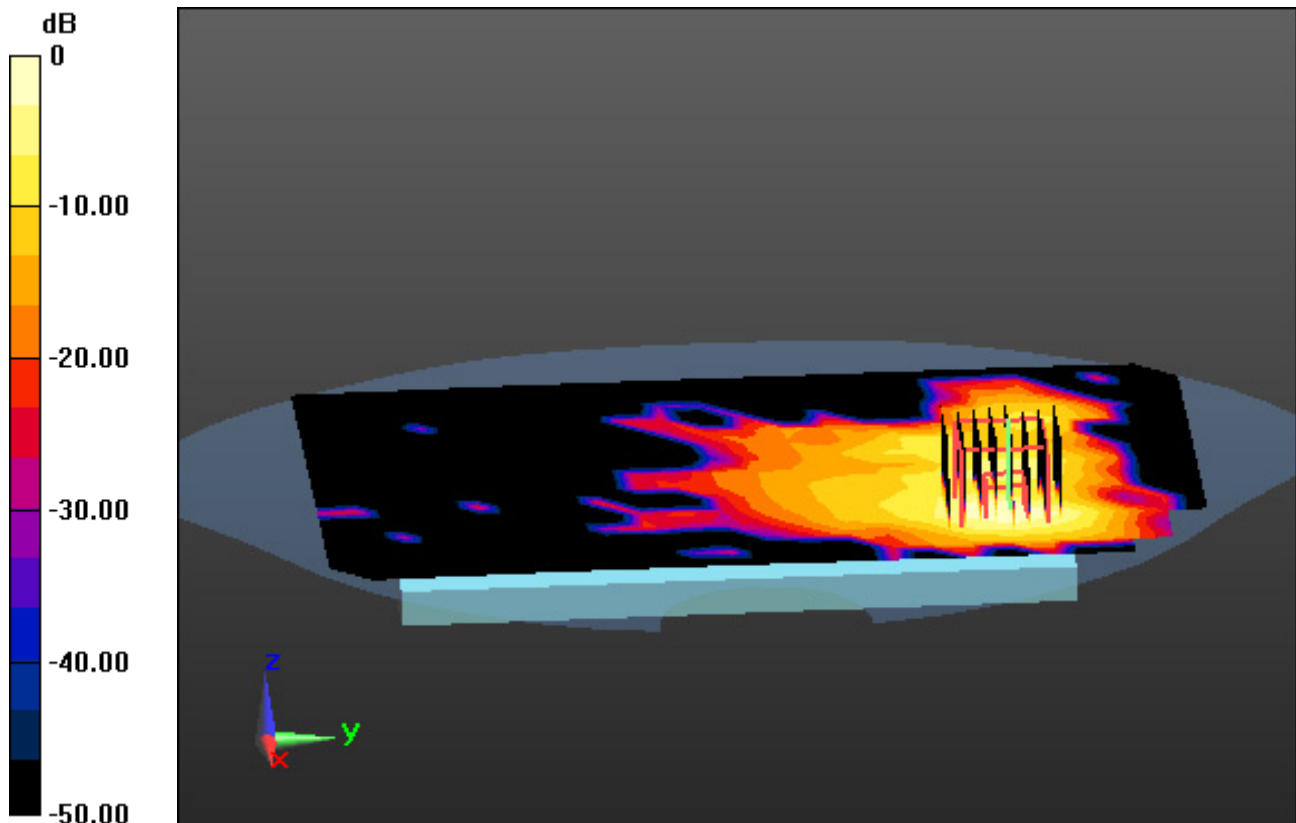
1 cm space from Body, Rear, WLAN(802.11a) Ch. 157, Ant Internal

Area Scan (15x23x1): Measurement grid: dx=10mm, dy=10mm

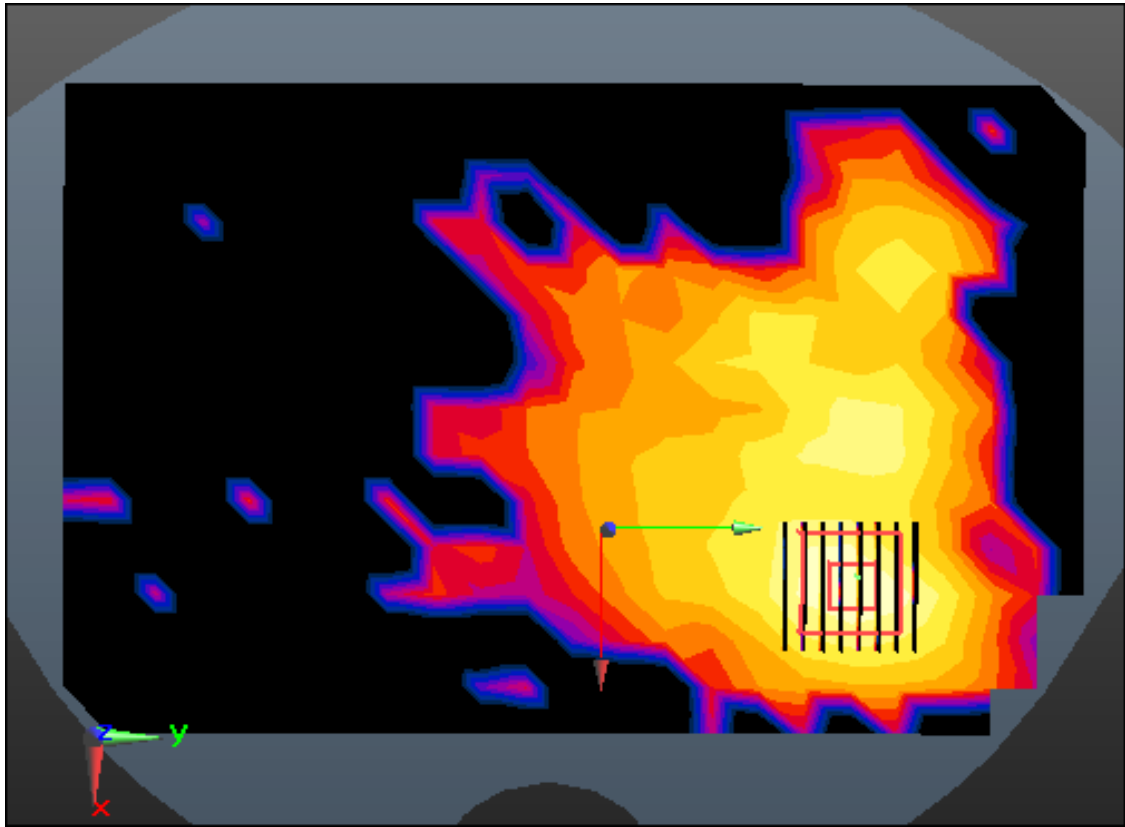
Zoom Scan (8x8x7)/Cube 0: Measurement grid: dx=4mm, dy=4mm, dz=1.4mm, Graded Ratio:1.4
Power Drift = 0.13 dB

Peak SAR (extrapolated) = 0.572 W/kg

SAR(1 g) = 0.123 W/kg; SAR(10 g) = 0.037 W/kg



0 dB = 0.335 W/kg



Enlarged Plot for A9

DT&C Co., Ltd.

DUT: LM-V601V; Type: Bar

Communication System: UID 0, Bluetooth (0); Frequency: 2441 MHz; Duty Cycle: 1:1.30227
Medium parameters used: $f = 2441$ MHz; $\sigma = 1.903$ S/m; $\epsilon_r = 51.13$; $\rho = 1000$ kg/m³
Phantom section: Flat Section

DASY5 Configuration:

Probe: EX3DV4 - SN3933; ConvF(7.75, 7.75, 7.75); Calibrated: 9/27/2019 Electronics: DAE4 Sn1391
Sensor-Surface: 2mm (Mechanical Surface Detection)
Phantom: SAM with CRP_2013_10_08_right; Type: QD000P40CD; Serial: TP:1785
Measurement SW: DASY52, Version 52.10 (3); SEMCAD X Version 14.6.13 (7474)

Test Date: 2020-01-16; Ambient Temp: 22.3; Tissue Temp: 22.6

1 cm space from Body, Front, Bluetooth 1Mbps Ch. 39, Ant Internal

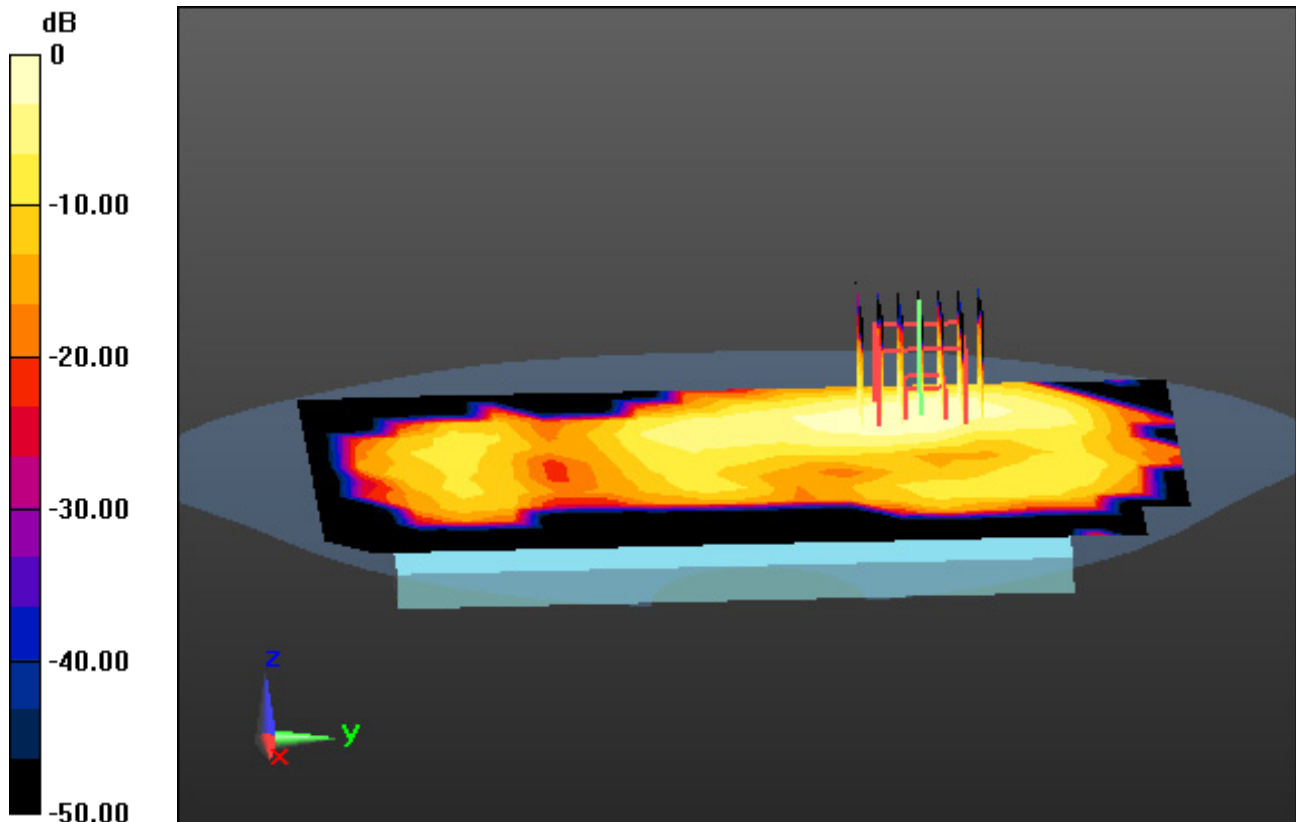
Area Scan (12x19x1): Measurement grid: dx=12mm, dy=12mm

Zoom Scan (7x7x7)/Cube 0: Measurement grid: dx=5mm, dy=5mm, dz=5mm

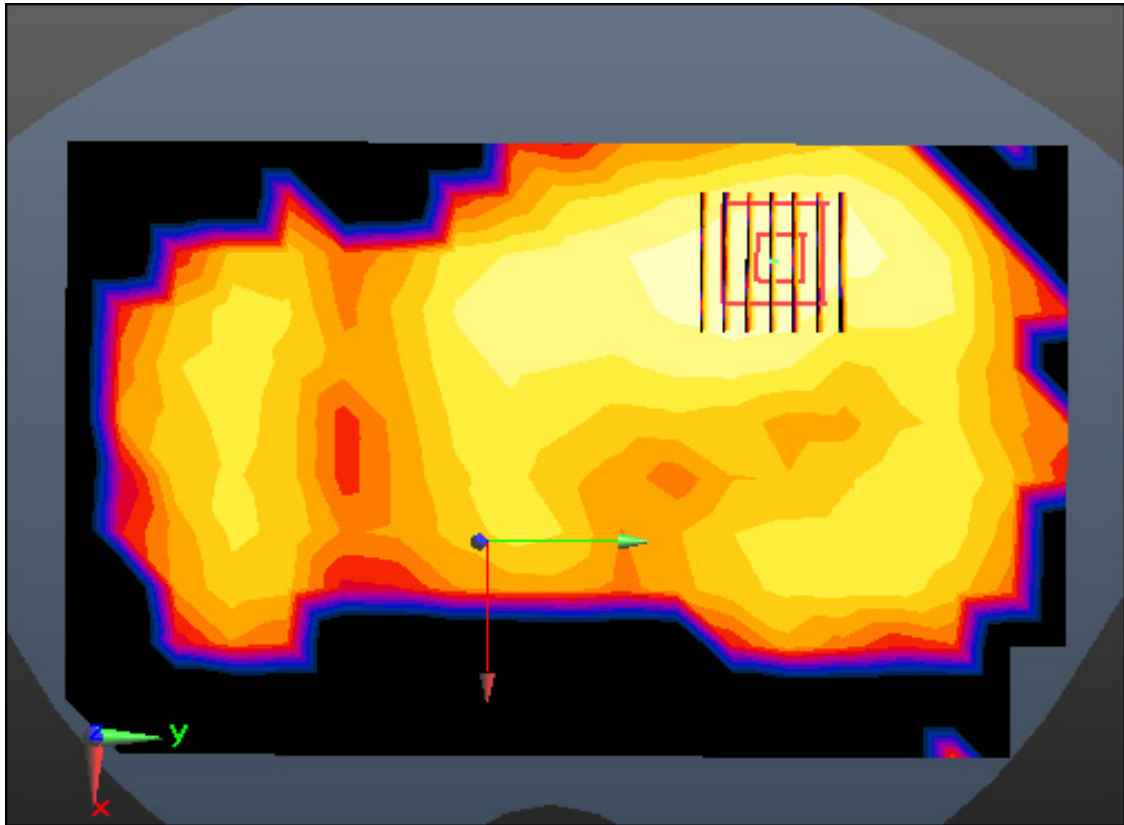
Power Drift = -0.03 dB

Peak SAR (extrapolated) = 0.0470 W/kg

SAR(1 g) = 0.022 W/kg; SAR(10 g) = 0.00889 W/kg



0 dB = 0.0337 W/kg



Enlarged Plot for A10

DT&C Co., Ltd.

DUT: LM-V601V; Type: Bar

Communication System: UID 0, 2.4 GHz W-LAN (0); Frequency: 2437 MHz; Duty Cycle: 1:1
Medium parameters used: $f = 2437$ MHz; $\sigma = 1.898$ S/m; $\epsilon_r = 51.138$; $\rho = 1000$ kg/m³
Phantom section: Flat Section

DASY5 Configuration:

Probe: EX3DV4 - SN3933; ConvF(7.75, 7.75, 7.75); Calibrated: 9/27/2019 Electronics: DAE4
Sn1391

Sensor-Surface: 2mm (Mechanical Surface Detection)

Phantom: SAM with CRP_2013_10_08_right; Type: QD000P40CD; Serial: TP:1785

Measurement SW: DASY52, Version 52.10 (3); SEMCAD X Version 14.6.13 (7474)

Test Date: 2020-01-16; Ambient Temp: 22.3; Tissue Temp: 22.6

Touch from Body, Front, WLAN(802.11b) Ch. 6, Ant Internal

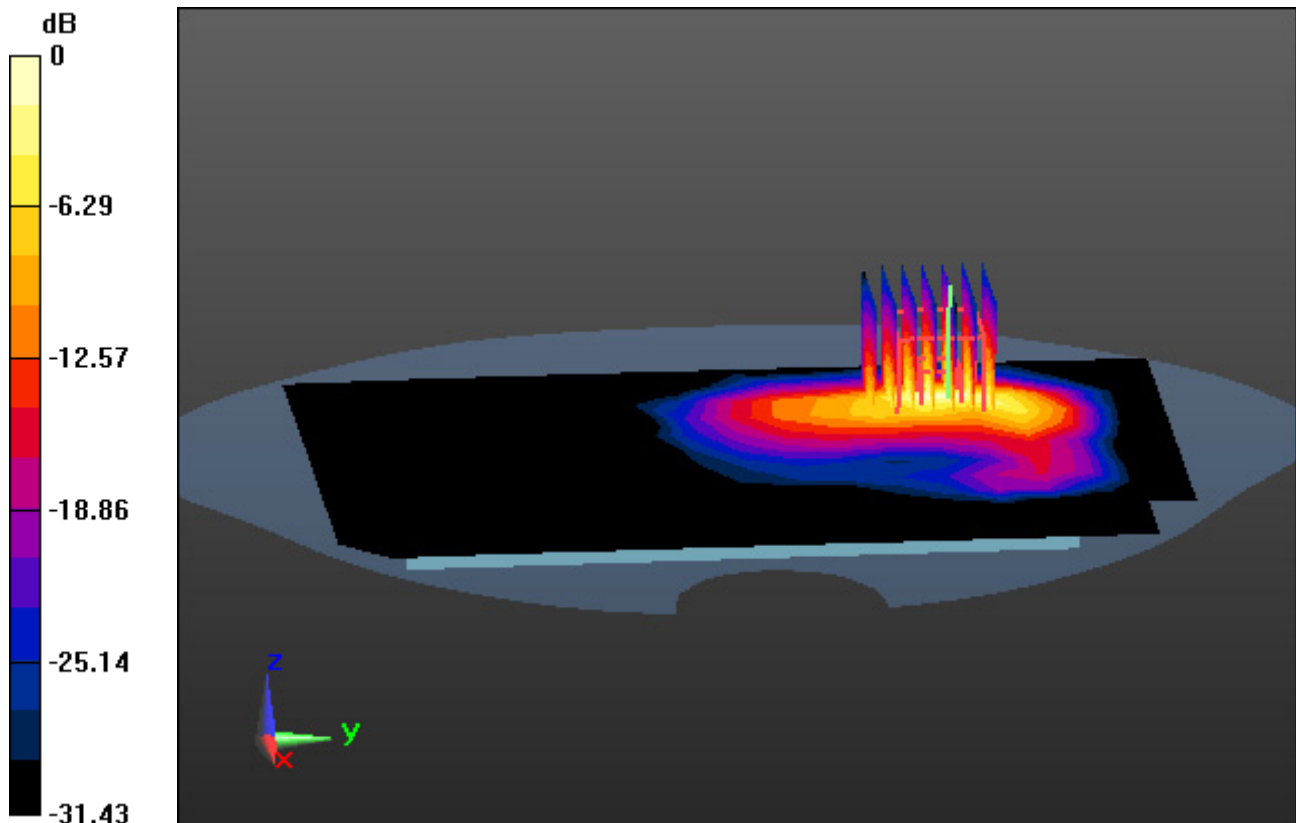
Area Scan (12x19x1): Measurement grid: dx=12mm, dy=12mm

Zoom Scan (7x7x7)/Cube 0: Measurement grid: dx=5mm, dy=5mm, dz=5mm

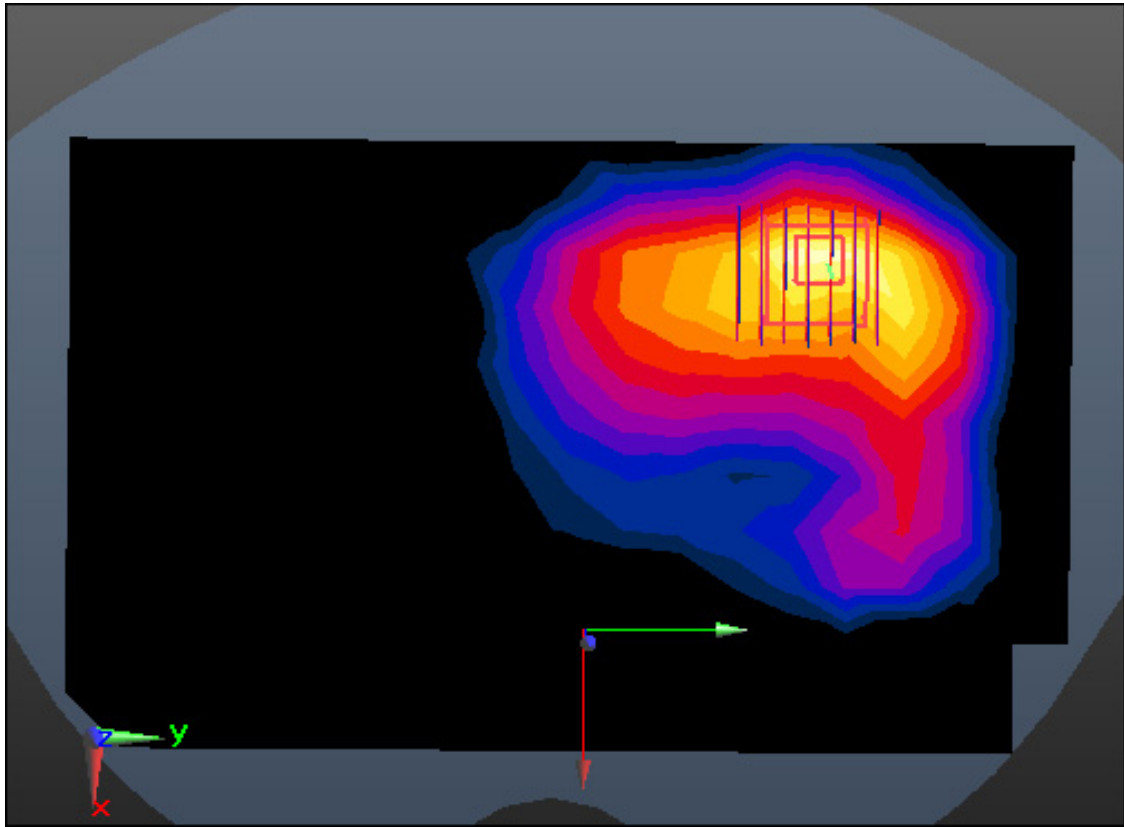
Power Drift = 0.12 dB

Peak SAR (extrapolated) = 4.21 W/kg

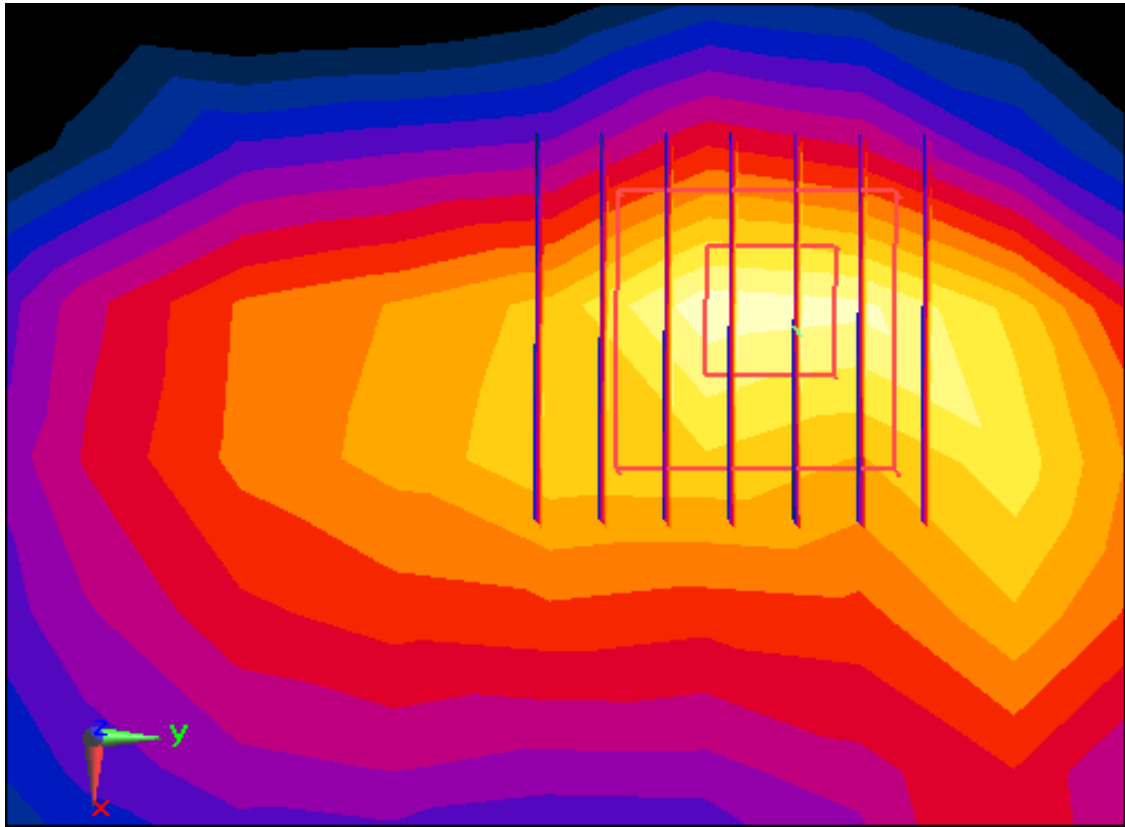
SAR(1 g) = 1.31 W/kg; SAR(10 g) = 0.445 W/kg



0 dB = 2.57 W/kg



Enlarged Plot for A11



Enlarged Plot for A11

DT&C Co., Ltd.

DUT: LM-V601V; Type: Bar

Communication System: UID 0, W-LAN_5300 (0); Frequency: 5320 MHz; Duty Cycle: 1:1
Medium parameters used: $f = 5320$ MHz; $\sigma = 5.387$ S/m; $\epsilon_r = 50.478$; $\rho = 1000$ kg/m³
Phantom section: Flat Section

DASY5 Configuration:

Probe: EX3DV4 - SN3933; ConvF(4.56, 4.56, 4.56); Calibrated: 9/27/2019 Electronics: DAE4
Sn1391

Sensor-Surface: 1.4mm (Mechanical Surface Detection)

Phantom: SAM with CRP_2016_07_22_middle; Type: QD000P40CD; Serial: TP:1786
Measurement SW: DASY52, Version 52.10 (3); SEMCAD X Version 14.6.13 (7474)

Test Date: 2020-01-17; Ambient Temp: 21.3; Tissue Temp: 21.7

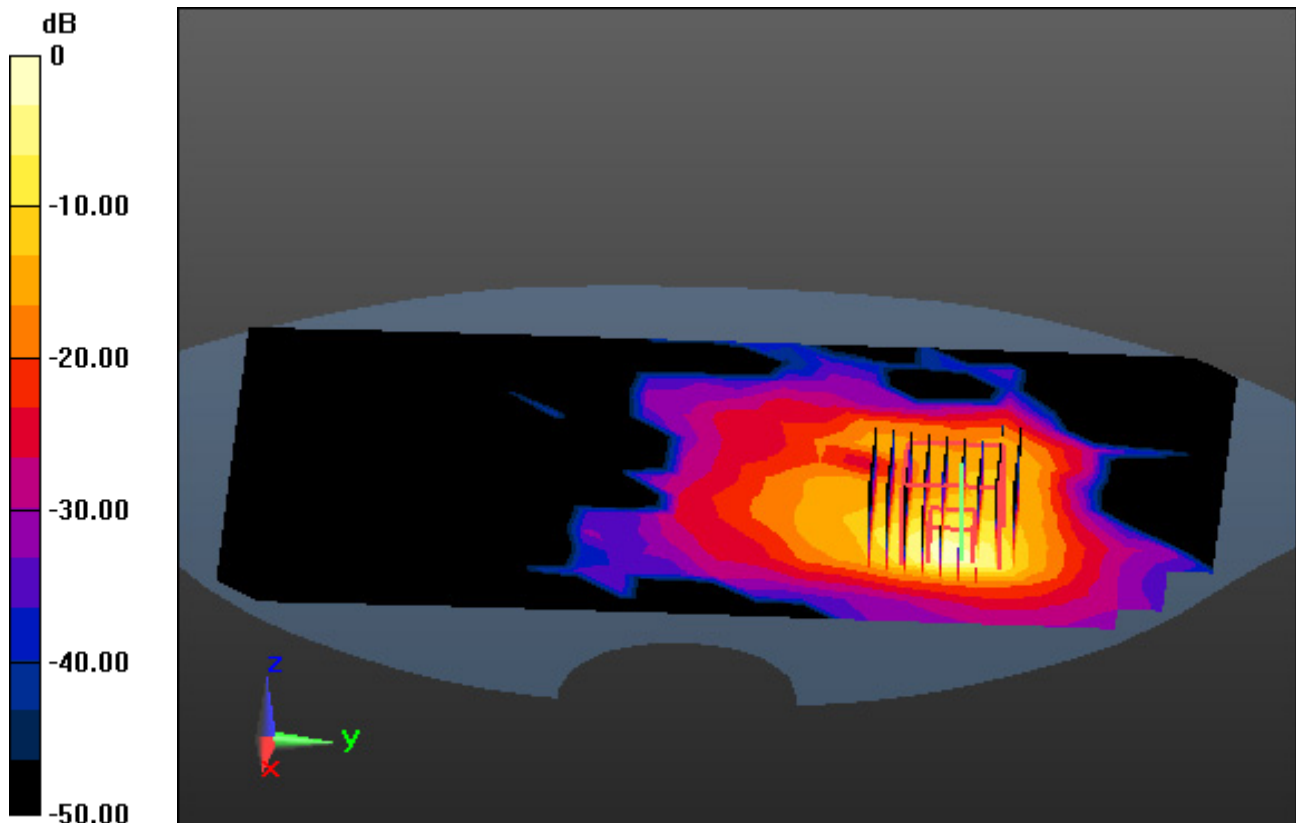
Touch from Body, Rear, WLAN(802.11a) Ch. 64, Ant Internal

Area Scan (15x23x1): Measurement grid: dx=10mm, dy=10mm

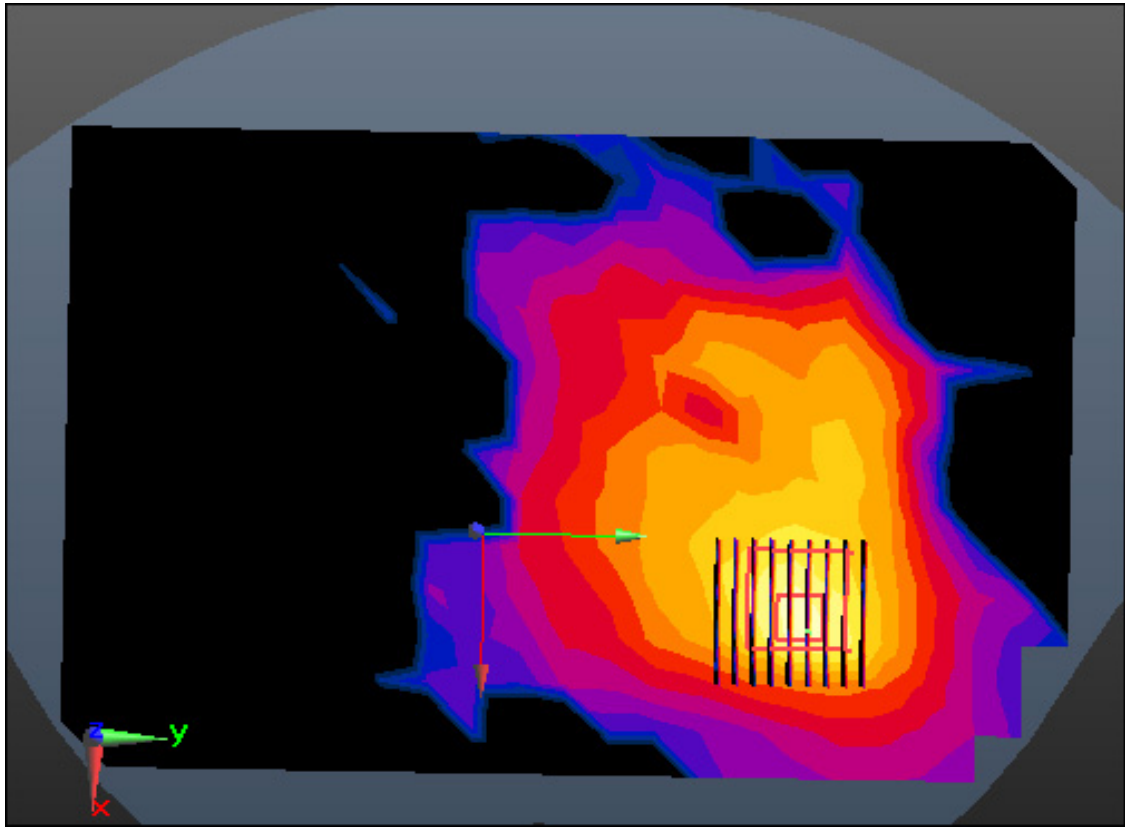
Zoom Scan (9x9x7)/Cube 0: Measurement grid: dx=4mm, dy=4mm, dz=1.4mm, Graded Ratio:1.4
Power Drift = 0.13 dB

Peak SAR (extrapolated) = 16.9 W/kg

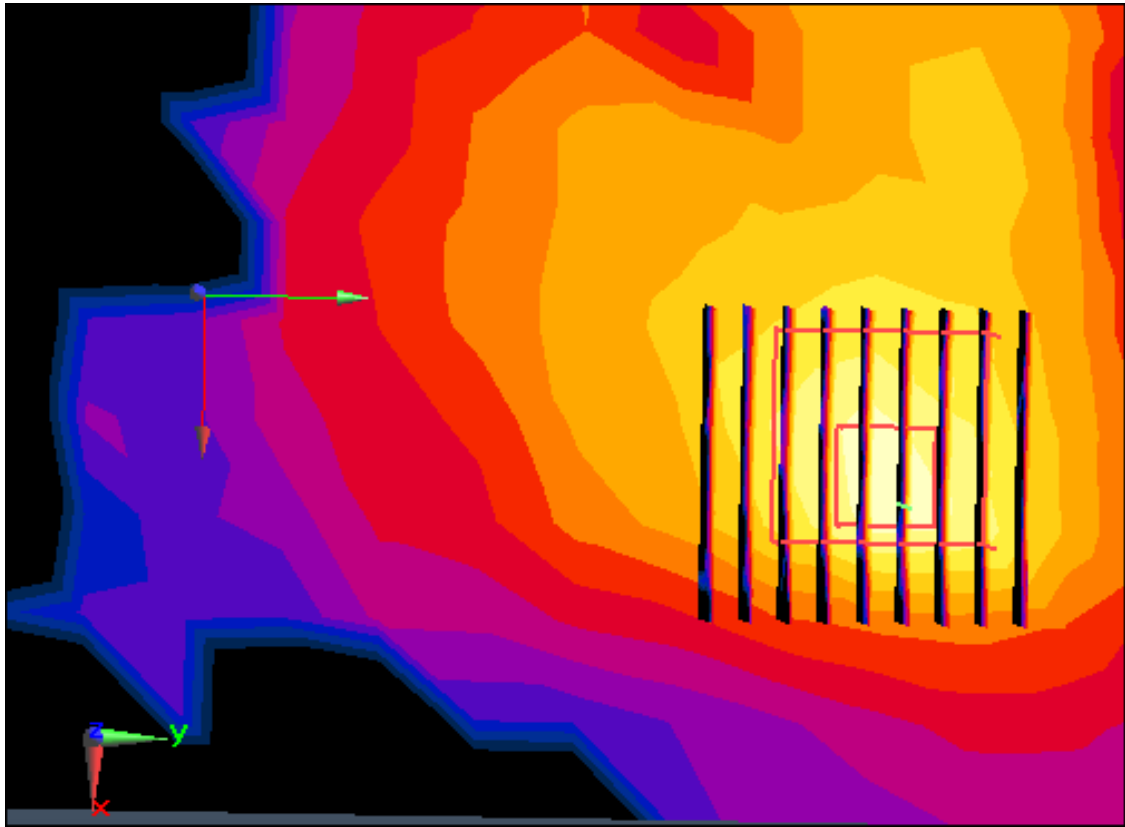
SAR(1 g) = 2.6 W/kg; SAR(10 g) = 0.728 W/kg



0 dB = 8.17 W/kg



Enlarged Plot for A12



Enlarged Plot for A12

DT&C Co., Ltd.

DUT: LM-V601V; Type: Bar

Communication System: UID 0, W-LAN_5500 (0); Frequency: 5500 MHz; Duty Cycle: 1:1
Medium parameters used: $f = 5500$ MHz; $\sigma = 5.516$ S/m; $\epsilon_r = 49.141$; $\rho = 1000$ kg/m³
Phantom section: Flat Section

DASY5 Configuration:

Probe: EX3DV4 - SN3933; ConvF(4.2, 4.2, 4.2); Calibrated: 9/27/2019 Electronics: DAE4 Sn1391
Sensor-Surface: 1.4mm (Mechanical Surface Detection)
Phantom: SAM with CRP_2016_07_22_middle; Type: QD000P40CD; Serial: TP:1786
Measurement SW: DASY52, Version 52.10 (3); SEMCAD X Version 14.6.13 (7474)

Test Date: 2020-01-20; Ambient Temp: 21.8; Tissue Temp: 22.1

Touch from Body, Rear, WLAN(802.11a) Ch. 100, Ant Internal

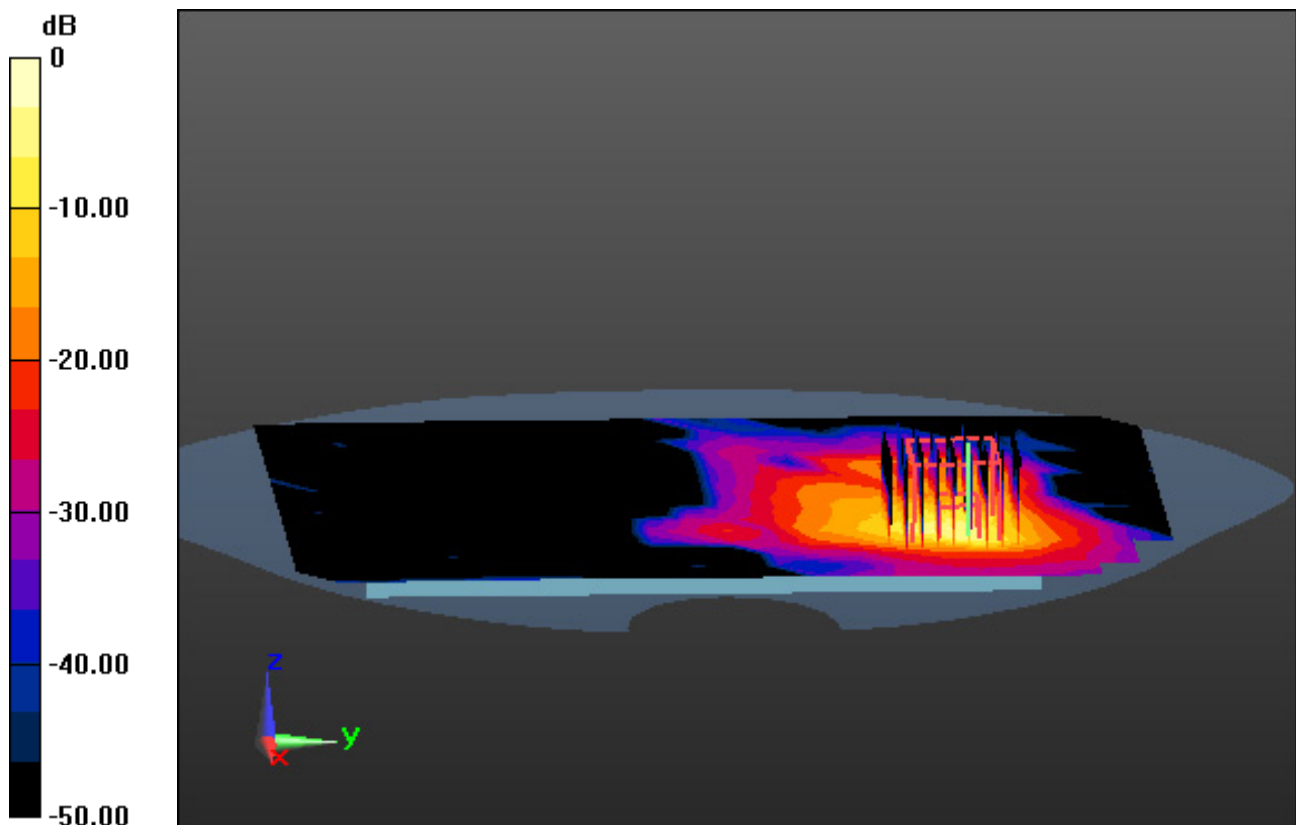
Area Scan (15x23x1): Measurement grid: dx=10mm, dy=10mm

Zoom Scan (9x9x7)/Cube 0: Measurement grid: dx=4mm, dy=4mm, dz=1.4mm, Graded Ratio:1.4

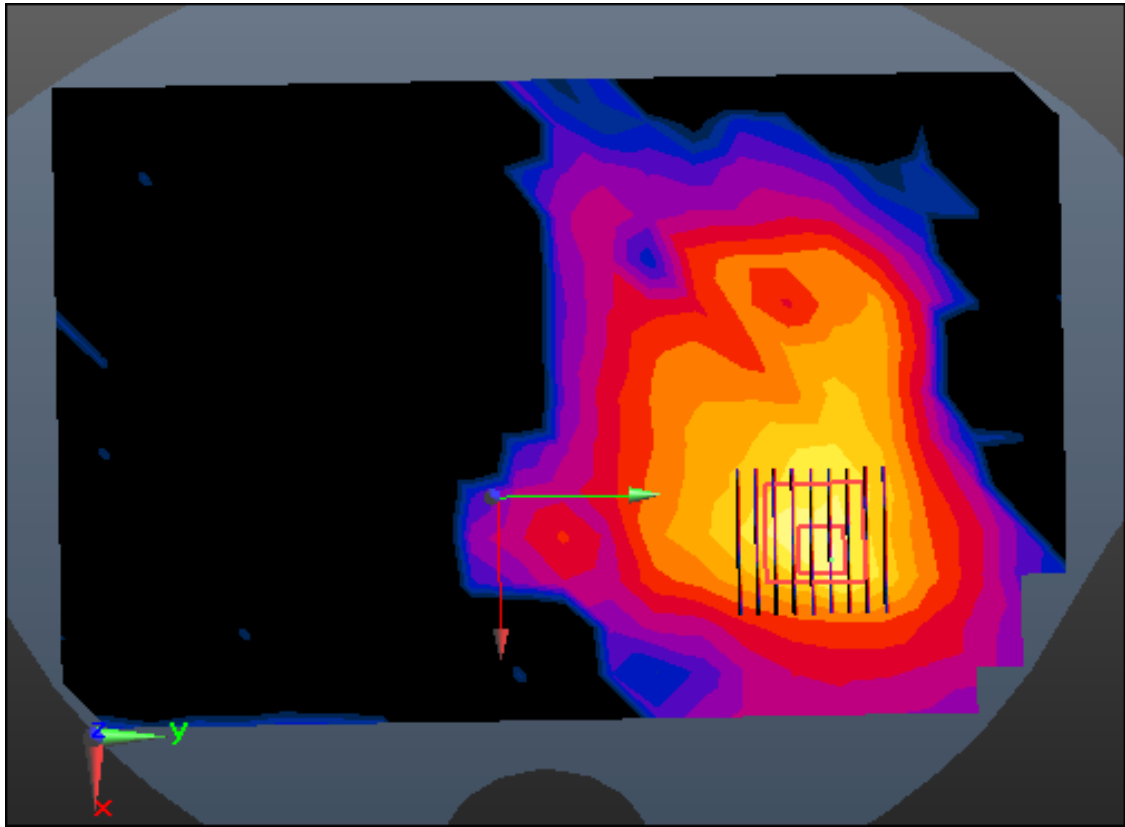
Power Drift = -0.17 dB

Peak SAR (extrapolated) = 25.3 W/kg

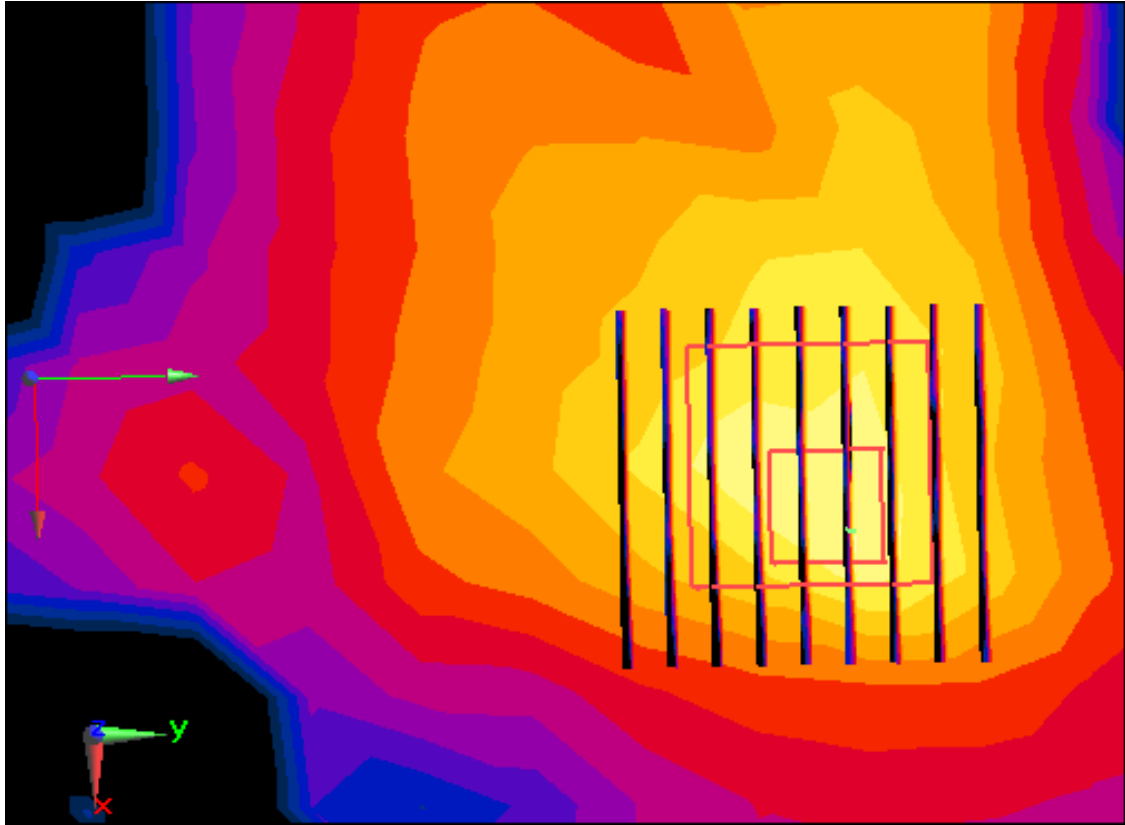
SAR(1 g) = 3.03 W/kg; SAR(10 g) = 0.797 W/kg



0 dB = 11.5 W/kg



Enlarged Plot for A13



Enlarged Plot for A13

DT&C Co., Ltd.

DUT: LM-V601V; Type: Bar

Communication System: UID 0, W-LAN_5800 (0); Frequency: 5785 MHz; Duty Cycle: 1:1
Medium parameters used: $f = 5785$ MHz; $\sigma = 5.933$ S/m; $\epsilon_r = 48.826$; $\rho = 1000$ kg/m³
Phantom section: Flat Section

DASY5 Configuration:

Probe: EX3DV4 - SN3933; ConvF(4.13, 4.13, 4.13); Calibrated: 9/27/2019 Electronics: DAE4
Sn1391

Sensor-Surface: 1.4mm (Mechanical Surface Detection)

Phantom: SAM with CRP_2016_07_22_middle; Type: QD000P40CD; Serial: TP:1786
Measurement SW: DASY52, Version 52.10 (3); SEMCAD X Version 14.6.13 (7474)

Test Date: 2020-01-21; Ambient Temp: 21.4; Tissue Temp: 21.1

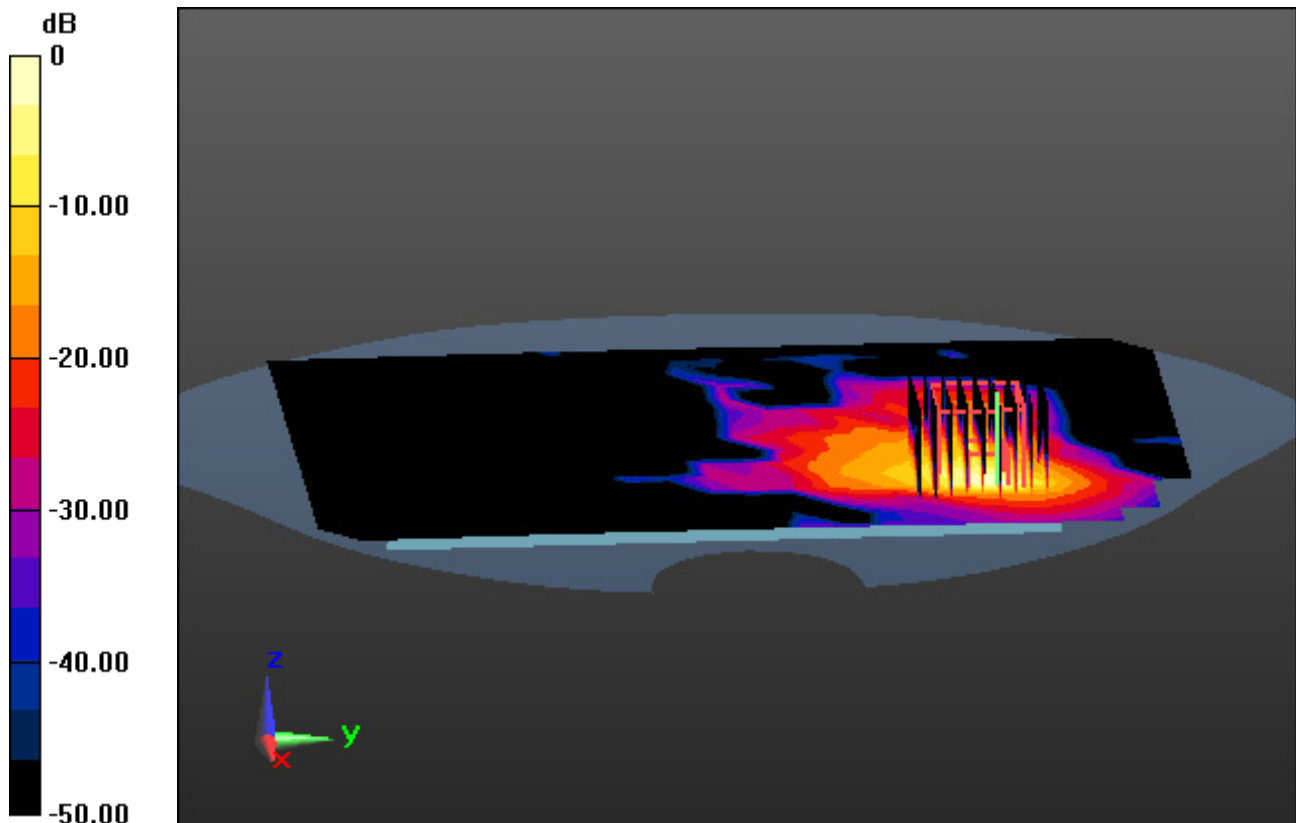
Touch from Body, Rear, WLAN(802.11a) Ch. 157, Ant Internal

Area Scan (15x23x1): Measurement grid: dx=10mm, dy=10mm

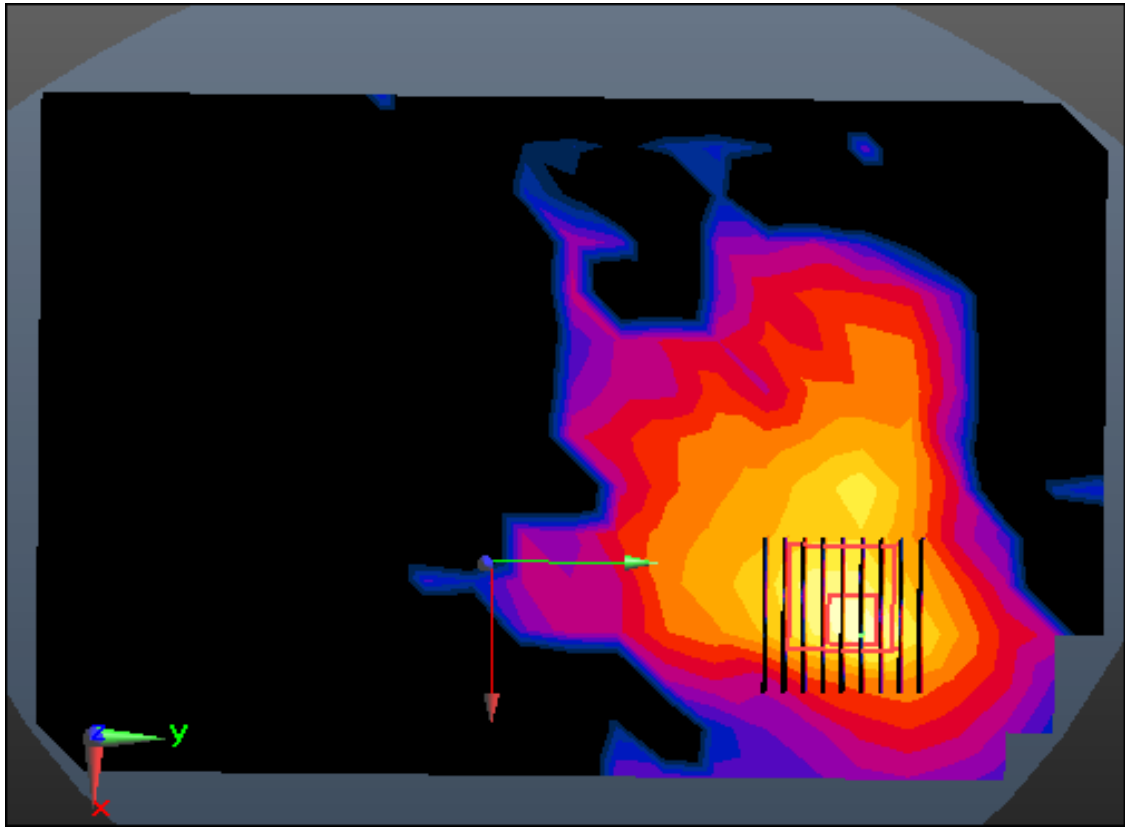
Zoom Scan (9x9x7)/Cube 0: Measurement grid: dx=4mm, dy=4mm, dz=1.4mm, Graded Ratio:1.4
Power Drift = 0.04 dB

Peak SAR (extrapolated) = 14.6 W/kg

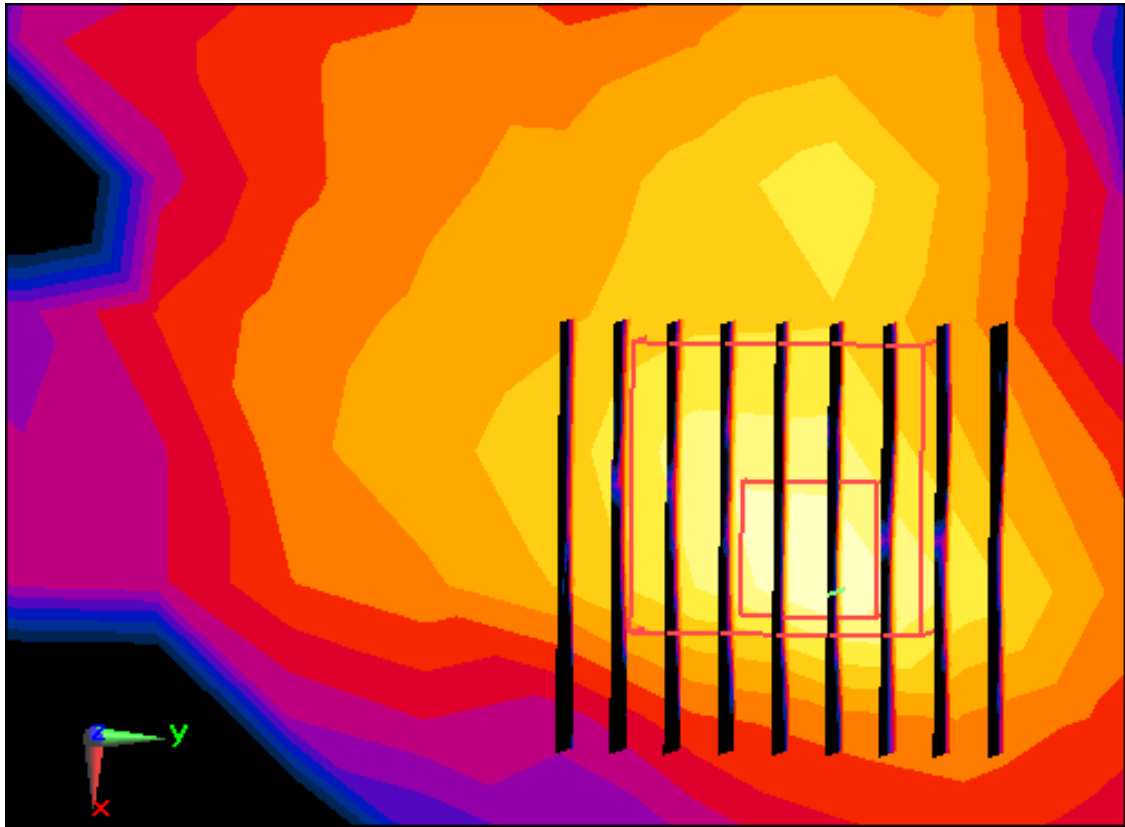
SAR(1 g) = 1.66 W/kg; SAR(10 g) = 0.389 W/kg



0 dB = 5.38 W/kg



Enlarged Plot for A14



Enlarged Plot for A14

DT&C Co., Ltd.

DUT: LM-V601V; Type: Bar

Communication System: UID 0, Bluetooth (0); Frequency: 2441 MHz; Duty Cycle: 1:1.302

Medium parameters used: $f = 2441$ MHz; $\sigma = 1.903$ S/m; $\epsilon_r = 51.13$; $\rho = 1000$ kg/m³

Phantom section: Flat Section

DASY5 Configuration:

Probe: EX3DV4 - SN3933; ConvF(7.75, 7.75, 7.75); Calibrated: 9/27/2019 Electronics: DAE4 Sn1391

Sensor-Surface: 2mm (Mechanical Surface Detection)

Phantom: SAM with CRP_2013_10_08_right; Type: QD000P40CD; Serial: TP:1785

Measurement SW: DASY52, Version 52.10 (3); SEMCAD X Version 14.6.13 (7474)

Test Date: 2020-01-16; Ambient Temp: 22.3; Tissue Temp: 22.6

Touch from Body, Left, Bluetooth 1Mbps Ch. 39, Ant Internal

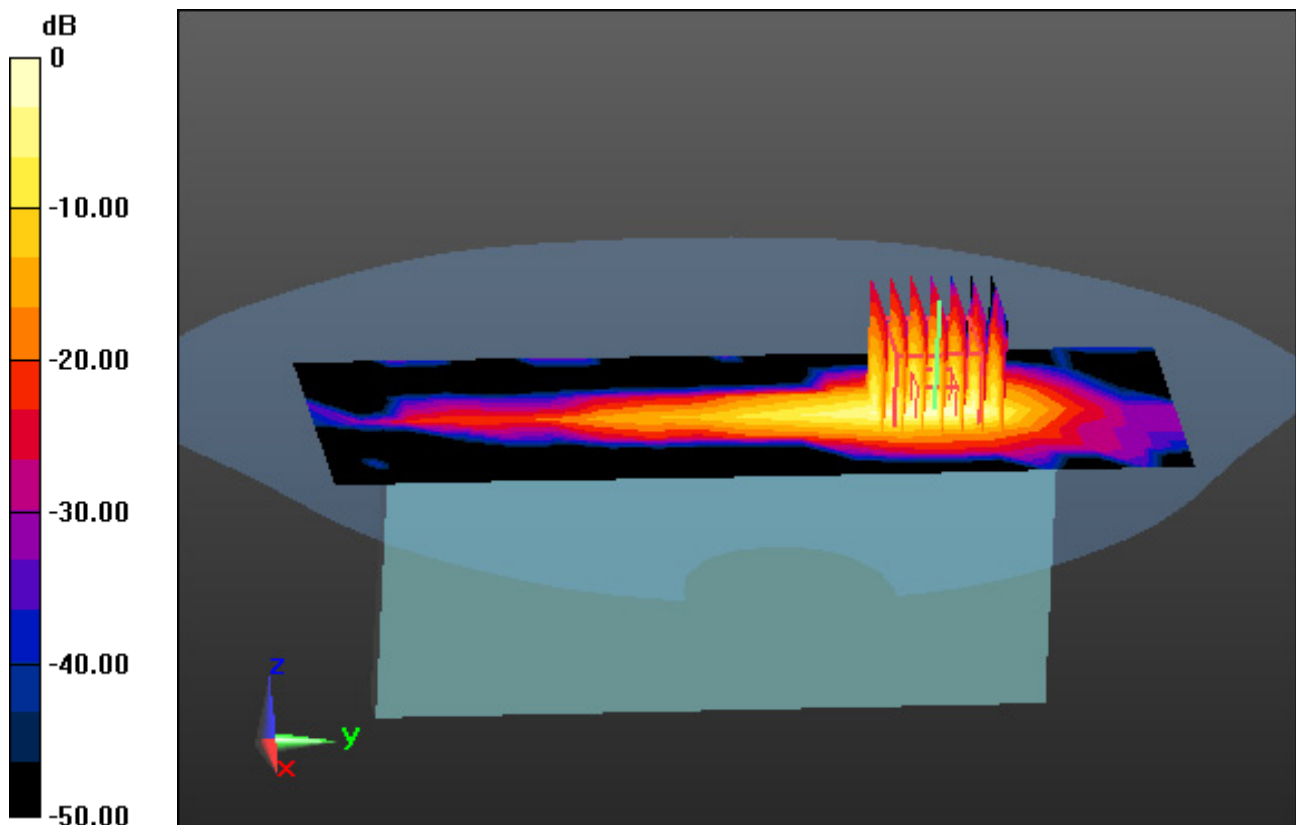
Area Scan (7x19x1): Measurement grid: dx=12mm, dy=12mm

Zoom Scan (7x7x7)/Cube 0: Measurement grid: dx=5mm, dy=5mm, dz=5mm

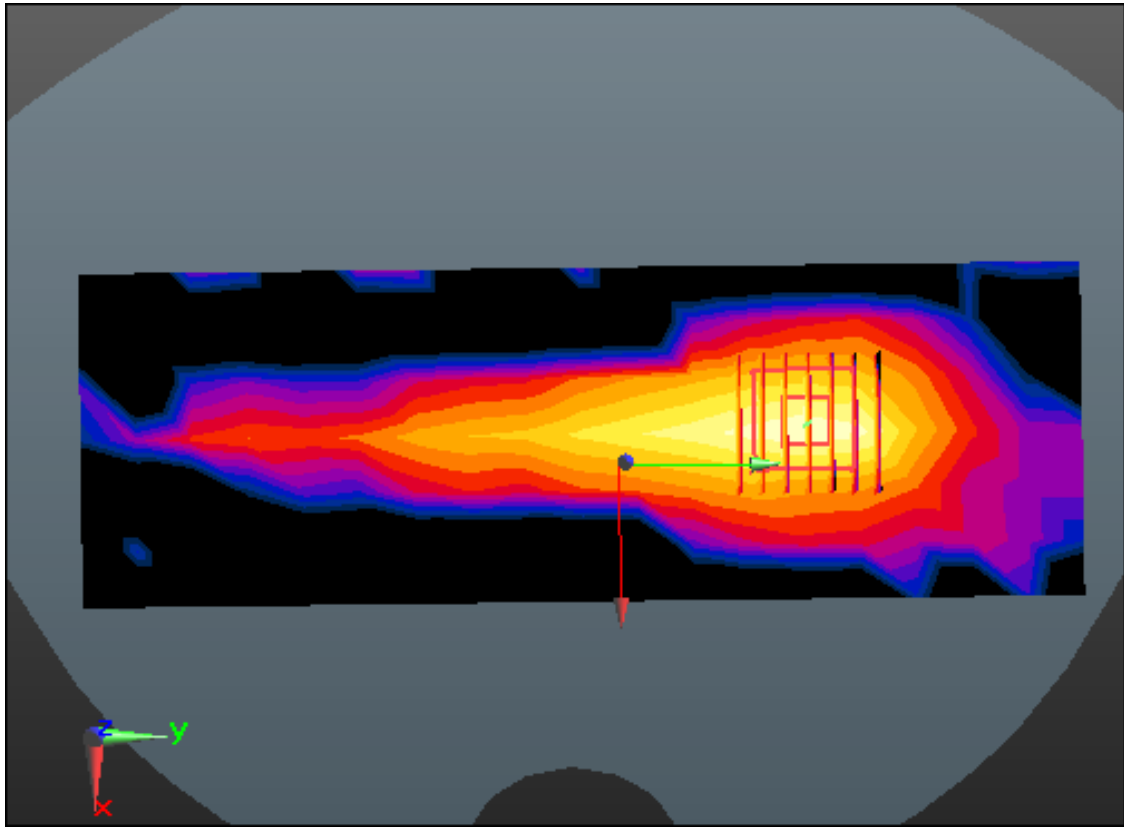
Power Drift = -0.01 dB

Peak SAR (extrapolated) = 1.14 W/kg

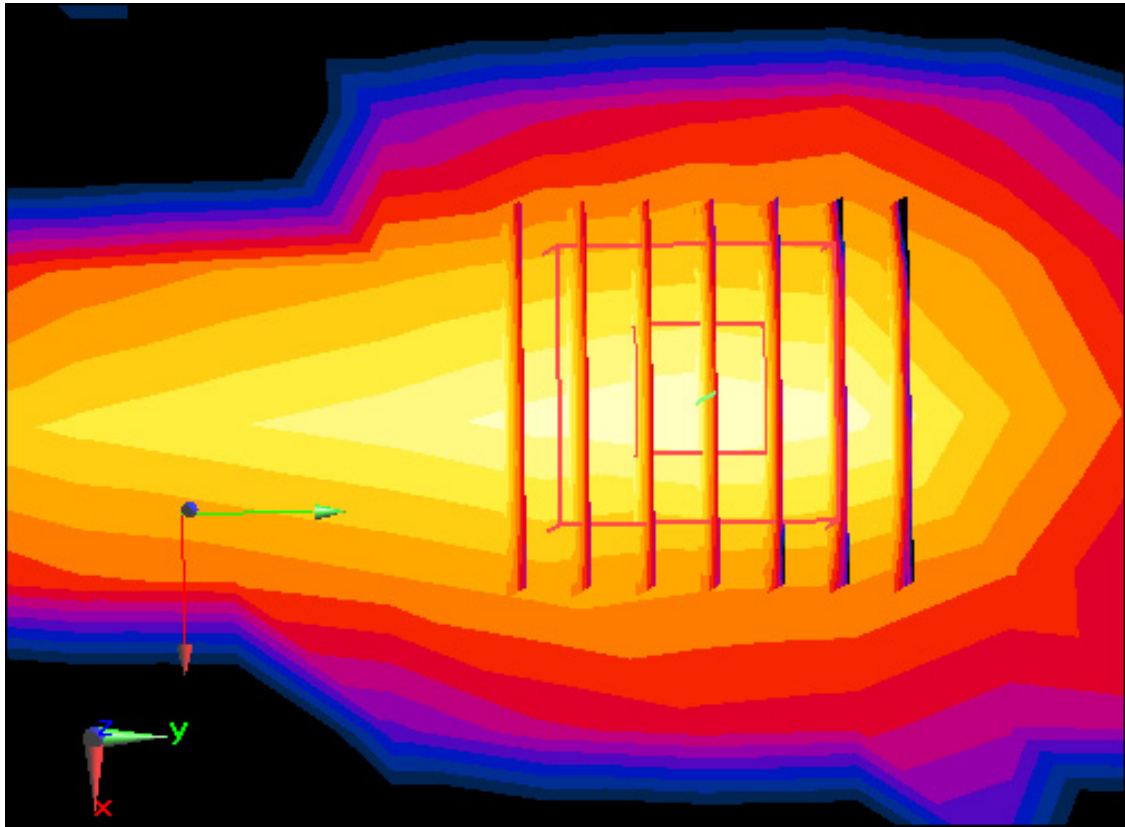
SAR(1 g) = 0.376 W/kg; SAR(10 g) = 0.127 W/kg



0 dB = 0.750 W/kg



Enlarged Plot for A15



Enlarged Plot for A15