

17. TEST PHOTOGRAPHS

See following Attached Pages for setup photographs.



| | | | | |
|--------------------------------------|---|---------------------------------------|---|--|
| FCC ID: ZNFUS995 |  PCTEST ENGINEERING LABORATORY, INC. | HAC (RF EMISSIONS) TEST REPORT |  LG | Reviewed by: Quality Manager |
| Filename: 0Y1501210210.ZNF | Test Dates: 01/12/2015 - 01/16/2015 | EUT Type: Portable Handset | Page 60 of 62 | |



Figure 17-1
Ear Reference Point HAC Phantom Alignment

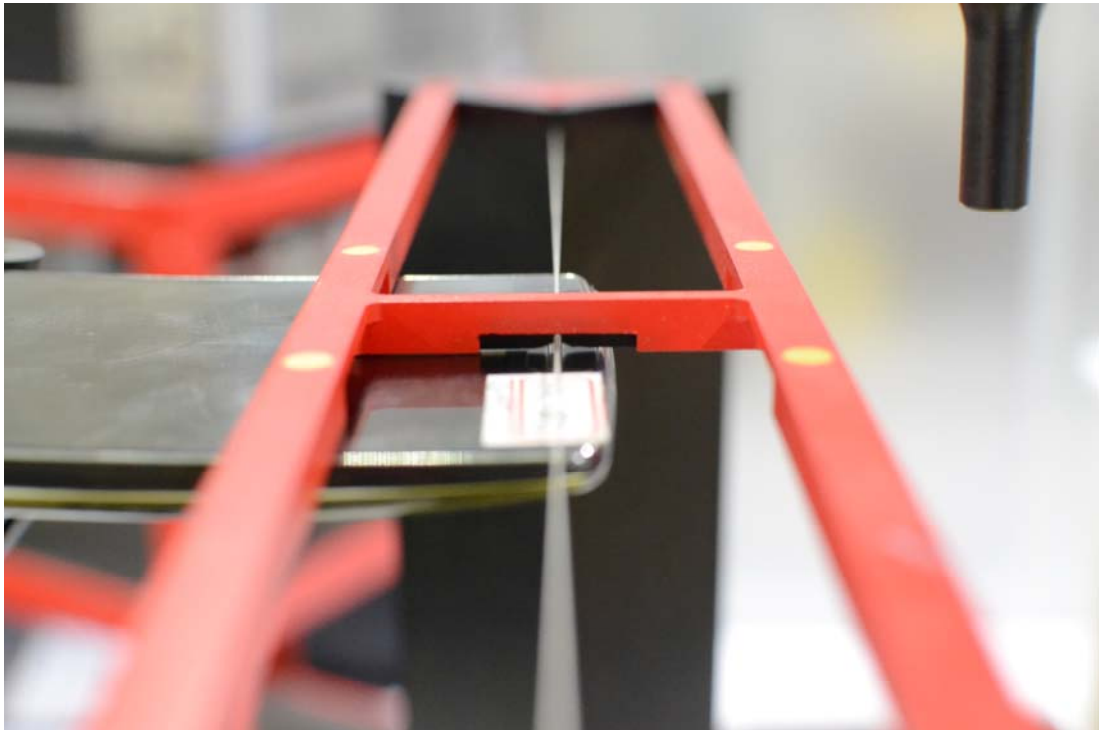




Figure 17-2
HAC Phantom Plane Alignment

| | | | |
|--------------------------------------|--|---------------------------------------|--|
| FCC ID: ZNFUS995 |  PCTEST <small>ENGINEERING LABORATORY, INC.</small> | HAC (RF EMISSIONS) TEST REPORT |  Reviewed by: Quality Manager |
| Filename: 0Y1501210210.ZNF | Test Dates: 01/12/2015 - 01/16/2015 | EUT Type: Portable Handset | Page 61 of 62 |

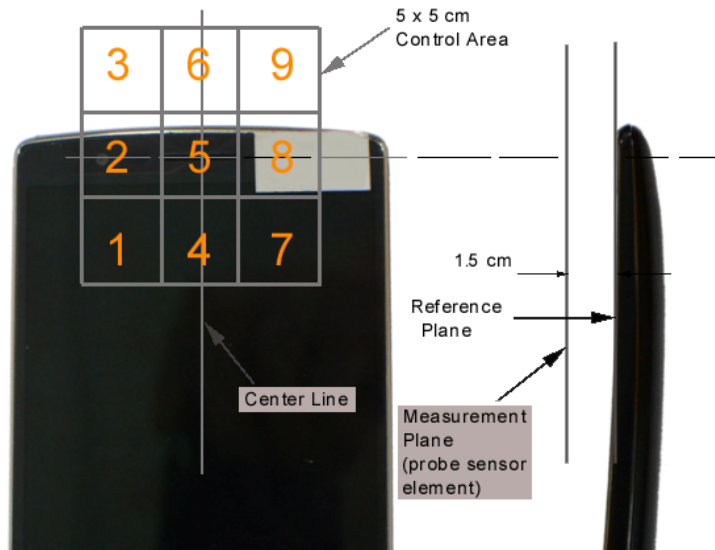


Figure 17-3 5x5 Scan grid above WD



Figure 17-4 E-Field WD Scan overlay

| | | | | |
|-------------------------------|--|--------------------------------|----|---------------------------------|
| FCC ID: ZNFUS995 | PCTEST ENGINEERING LABORATORY, INC. | HAC (RF EMISSIONS) TEST REPORT | LG | Reviewed by: Quality Manager |
| Filename: 0Y1501210210.ZNF | Test Dates: 01/12/2015 - 01/16/2015 | EUT Type: Portable Handset | | Page 62 of 62 |