

HAC-RF Emission

Communication System: CDMA2000; Frequency: 824.7 MHz; Duty Cycle: 1:1

Phantom section: RF Section

DASY5 Configuration:

- Probe: H3DV6 - SN6157; ; Calibrated: 1/11/2013

- Sensor-Surface: (Fix Surface)

- Electronics: DAE4 Sn1239; Calibrated: 6/6/2012

- Phantom: HAC Test Arch with AMCC; Type: SD HAC P01 BA

- Measurement SW: DASY52, Version 52.8 (5);SEMCAD X Version 14.6.8 (7028)

CDMA BC0 (H-field scan for ANSI C63.19-2007 compliance)/RC3 SO55_ch 1013/Hearing Aid Compatibility Test (101x101x1):

Interpolated grid: dx=0.5000 mm, dy=0.5000 mm

Device Reference Point: 0, 0, -6.3 mm

Reference Value = 0.05900 A/m; Power Drift = 0.01 dB

PMR not calibrated. PMF = 1.000 is applied.

H-field emissions = 0.08373 A/m

Near-field category: **M4 (AWF 0 dB)**

PMF scaled H-field

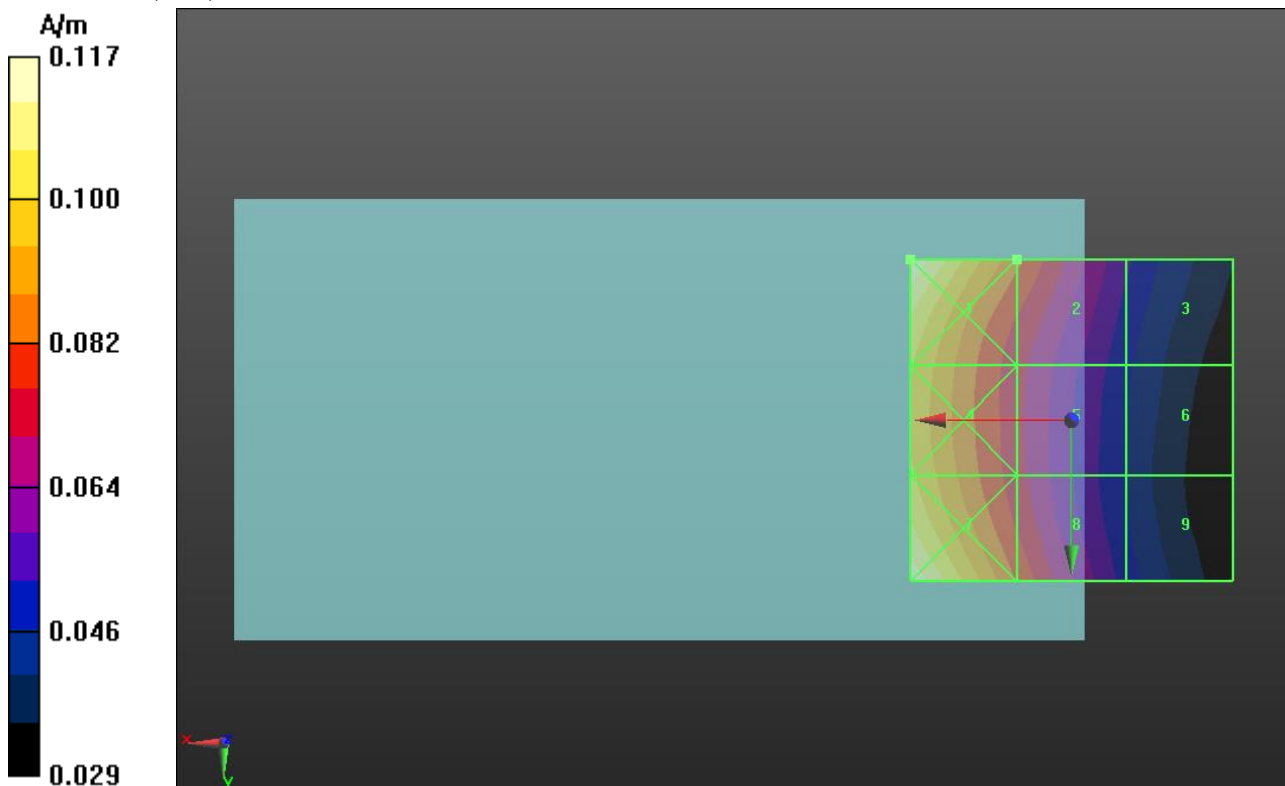
| | | |
|--------------------------------------|--------------------------------------|--------------------------------------|
| Grid 1 M4 0.117 A/m | Grid 2 M4 0.084 A/m | Grid 3 M4 0.054 A/m |
| Grid 4 M4 0.101 A/m | Grid 5 M4 0.073 A/m | Grid 6 M4 0.048 A/m |
| Grid 7 M4 0.117 A/m | Grid 8 M4 0.082 A/m | Grid 9 M4 0.050 A/m |

Cursor:

Total = 0.1173 A/m

H Category: M4

Location: 25, -25, 8.7 mm



HAC-RF Emission

Communication System: CDMA2000; Frequency: 836.52 MHz; Duty Cycle: 1:1

Phantom section: RF Section

DASY5 Configuration:

- Probe: H3DV6 - SN6157; ; Calibrated: 1/11/2013
- Sensor-Surface: (Fix Surface)
- Electronics: DAE4 Sn1239; Calibrated: 6/6/2012
- Phantom: HAC Test Arch with AMCC; Type: SD HAC P01 BA
- Measurement SW: DASY52, Version 52.8 (5);SEMCAD X Version 14.6.8 (7028)

CDMA BC0 (H-field scan for ANSI C63.19-2007 compliance)/RC3 SO55_ch 384/Hearing Aid Compatibility Test (101x101x1): Interpolated grid: dx=0.5000 mm, dy=0.5000 mm

Device Reference Point: 0, 0, -6.3 mm

Reference Value = 0.05600 A/m; Power Drift = 0.03 dB

PMR not calibrated. PMF = 1.000 is applied.

H-field emissions = 0.08055 A/m

Near-field category: M4 (AWF 0 dB)

PMF scaled H-field

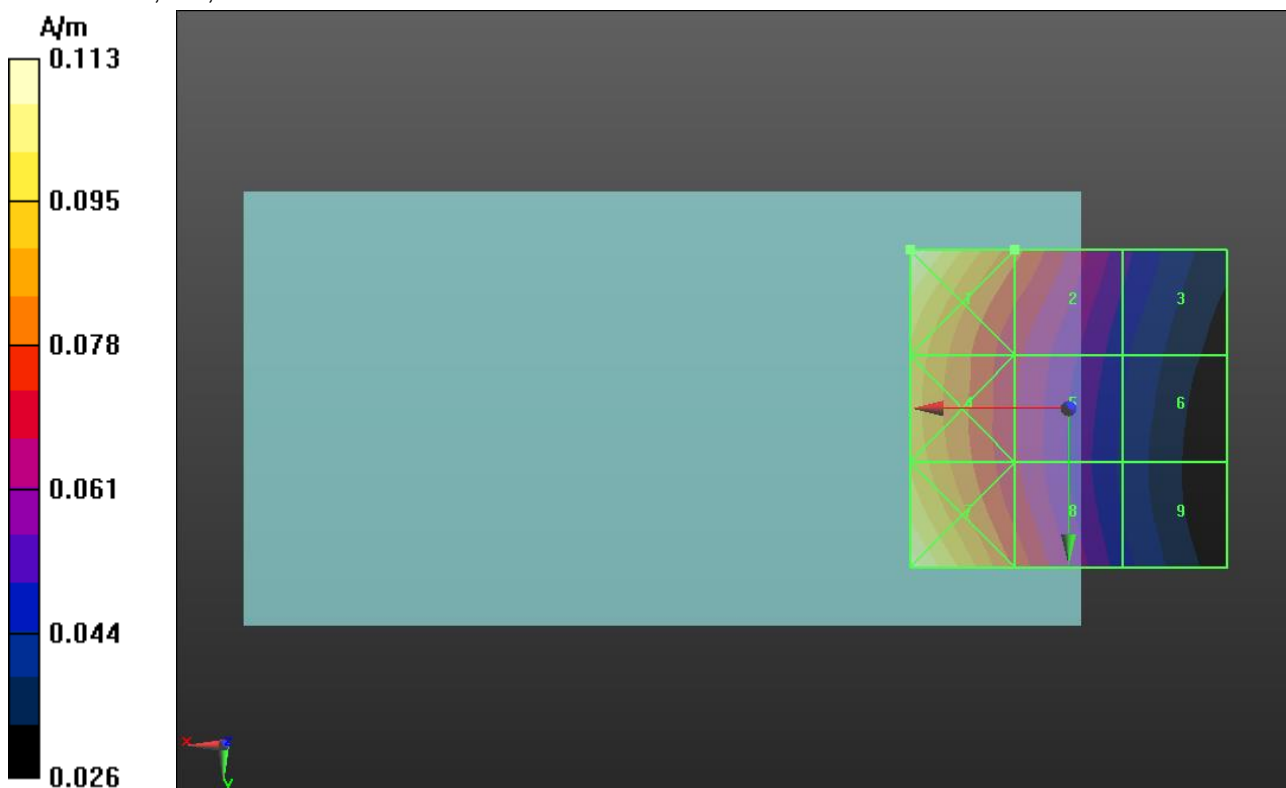
| | | |
|--------------------------------------|--------------------------------------|--------------------------------------|
| Grid 1 M4 0.113 A/m | Grid 2 M4 0.081 A/m | Grid 3 M4 0.052 A/m |
| Grid 4 M4 0.095 A/m | Grid 5 M4 0.068 A/m | Grid 6 M4 0.045 A/m |
| Grid 7 M4 0.110 A/m | Grid 8 M4 0.077 A/m | Grid 9 M4 0.047 A/m |

Cursor:

Total = 0.1126 A/m

H Category: M4

Location: 25, -25, 8.7 mm



HAC-RF Emission

Communication System: CDMA2000; Frequency: 848.31 MHz; Duty Cycle: 1:1

Phantom section: RF Section

DASY5 Configuration:

- Probe: H3DV6 - SN6157; ; Calibrated: 1/11/2013

- Sensor-Surface: (Fix Surface)

- Electronics: DAE4 Sn1239; Calibrated: 6/6/2012

- Phantom: HAC Test Arch with AMCC; Type: SD HAC P01 BA

- Measurement SW: DASY52, Version 52.8 (5);SEMCAD X Version 14.6.8 (7028)

CDMA BC0 (H-field scan for ANSI C63.19-2007 compliance)/RC3 SO55_ch 777/Hearing Aid Compatibility Test (101x101x1):

Interpolated grid: dx=0.5000 mm, dy=0.5000 mm

Device Reference Point: 0, 0, -6.3 mm

Reference Value = 0.05700 A/m; Power Drift = 0.04 dB

PMR not calibrated. PMF = 1.000 is applied.

H-field emissions = 0.07954 A/m

Near-field category: M4 (AWF 0 dB)

PMF scaled H-field

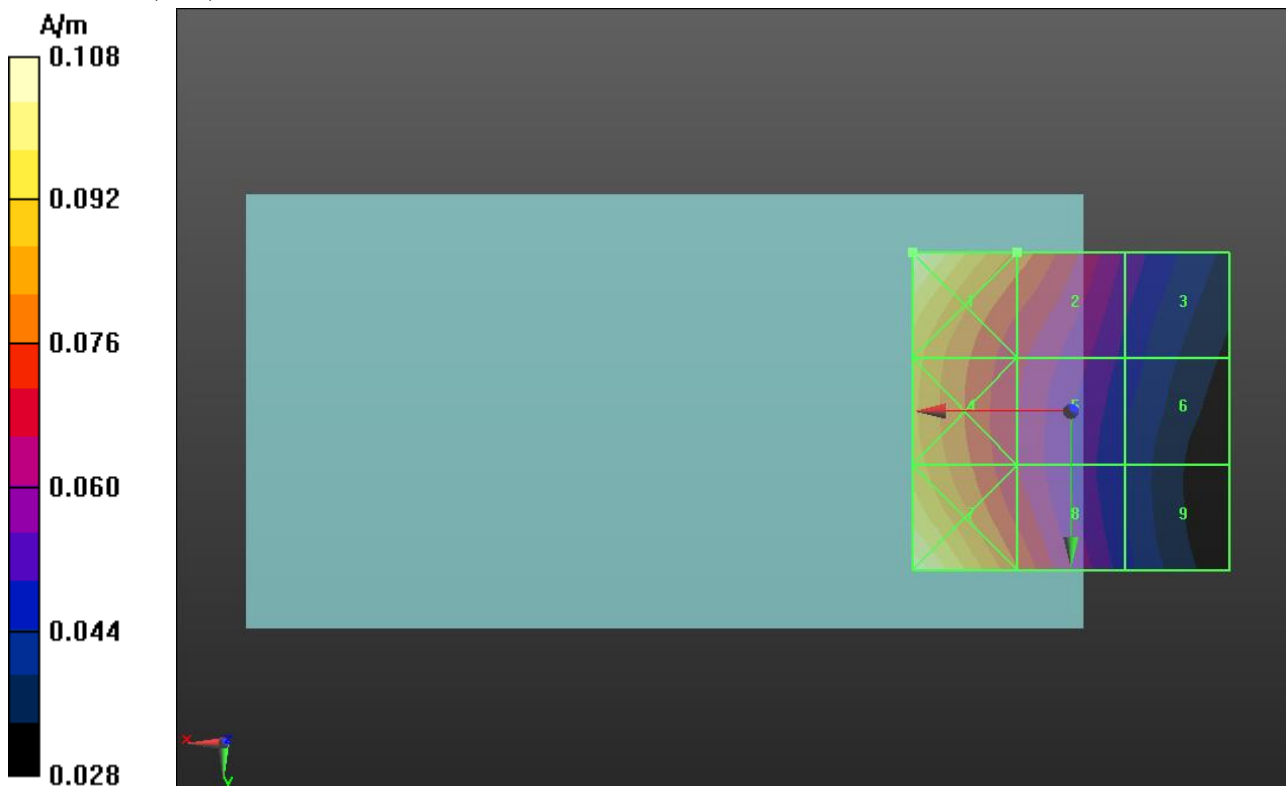
| | | |
|--------------------------------------|--------------------------------------|--------------------------------------|
| Grid 1 M4 0.108 A/m | Grid 2 M4 0.080 A/m | Grid 3 M4 0.054 A/m |
| Grid 4 M4 0.090 A/m | Grid 5 M4 0.067 A/m | Grid 6 M4 0.048 A/m |
| Grid 7 M4 0.106 A/m | Grid 8 M4 0.076 A/m | Grid 9 M4 0.046 A/m |

Cursor:

Total = 0.1075 A/m

H Category: M4

Location: 25, -25, 8.7 mm



HAC-RF Emission

Communication System: CDMA2000; Frequency: 1851.25 MHz; Duty Cycle: 1:1

Phantom section: RF Section

DASY5 Configuration:

- Probe: H3DV6 - SN6157; ; Calibrated: 1/11/2013
- Sensor-Surface: (Fix Surface)
- Electronics: DAE4 Sn1239; Calibrated: 6/6/2012
- Phantom: HAC Test Arch with AMCC; Type: SD HAC P01 BA
- Measurement SW: DASY52, Version 52.8 (5);SEMCAD X Version 14.6.8 (7028)

CDMA BC1 (H-field scan for ANSI C63.19-2007 compliance)/RC3 SO55_ch 25/Hearing Aid Compatibility Test (101x101x1):

Interpolated grid: dx=0.5000 mm, dy=0.5000 mm

Device Reference Point: 0, 0, -6.3 mm

Reference Value = 0.09700 A/m; Power Drift = -0.02 dB

PMR not calibrated. PMF = 1.000 is applied.

H-field emissions = 0.08137 A/m

Near-field category: M4 (AWF 0 dB)

PMF scaled H-field

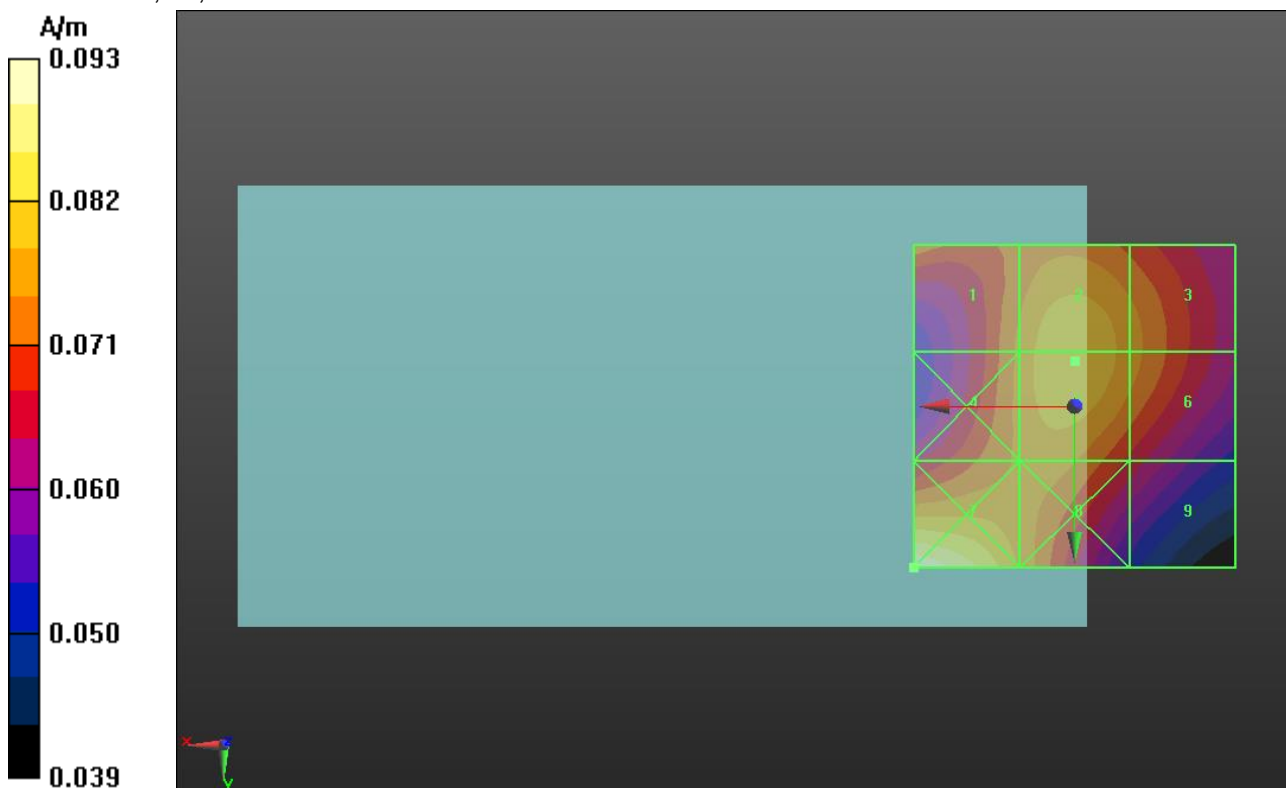
| | | |
|--------------------------------------|--------------------------------------|--------------------------------------|
| Grid 1 M4 0.076 A/m | Grid 2 M4 0.081 A/m | Grid 3 M4 0.077 A/m |
| Grid 4 M4 0.076 A/m | Grid 5 M4 0.081 A/m | Grid 6 M4 0.077 A/m |
| Grid 7 M4 0.093 A/m | Grid 8 M4 0.078 A/m | Grid 9 M4 0.067 A/m |

Cursor:

Total = 0.09274 A/m

H Category: M4

Location: 25, 25, 8.7 mm



HAC-RF Emission

Communication System: CDMA2000; Frequency: 1880 MHz; Duty Cycle: 1:1

Phantom section: RF Section

DASY5 Configuration:

- Probe: H3DV6 - SN6157; ; Calibrated: 1/11/2013
- Sensor-Surface: (Fix Surface)
- Electronics: DAE4 Sn1239; Calibrated: 6/6/2012
- Phantom: HAC Test Arch with AMCC; Type: SD HAC P01 BA
- Measurement SW: DASY52, Version 52.8 (5);SEMCAD X Version 14.6.8 (7028)

CDMA BC1 (H-field scan for ANSI C63.19-2007 compliance)/RC3 SO55_ch 600/Hearing Aid Compatibility Test (101x101x1): Interpolated grid: dx=0.5000 mm, dy=0.5000 mm

Device Reference Point: 0, 0, -6.3 mm

Reference Value = 0.1020 A/m; Power Drift = 0.02 dB

PMR not calibrated. PMF = 1.000 is applied.

H-field emissions = 0.08645 A/m

Near-field category: M4 (AWF 0 dB)

PMF scaled H-field

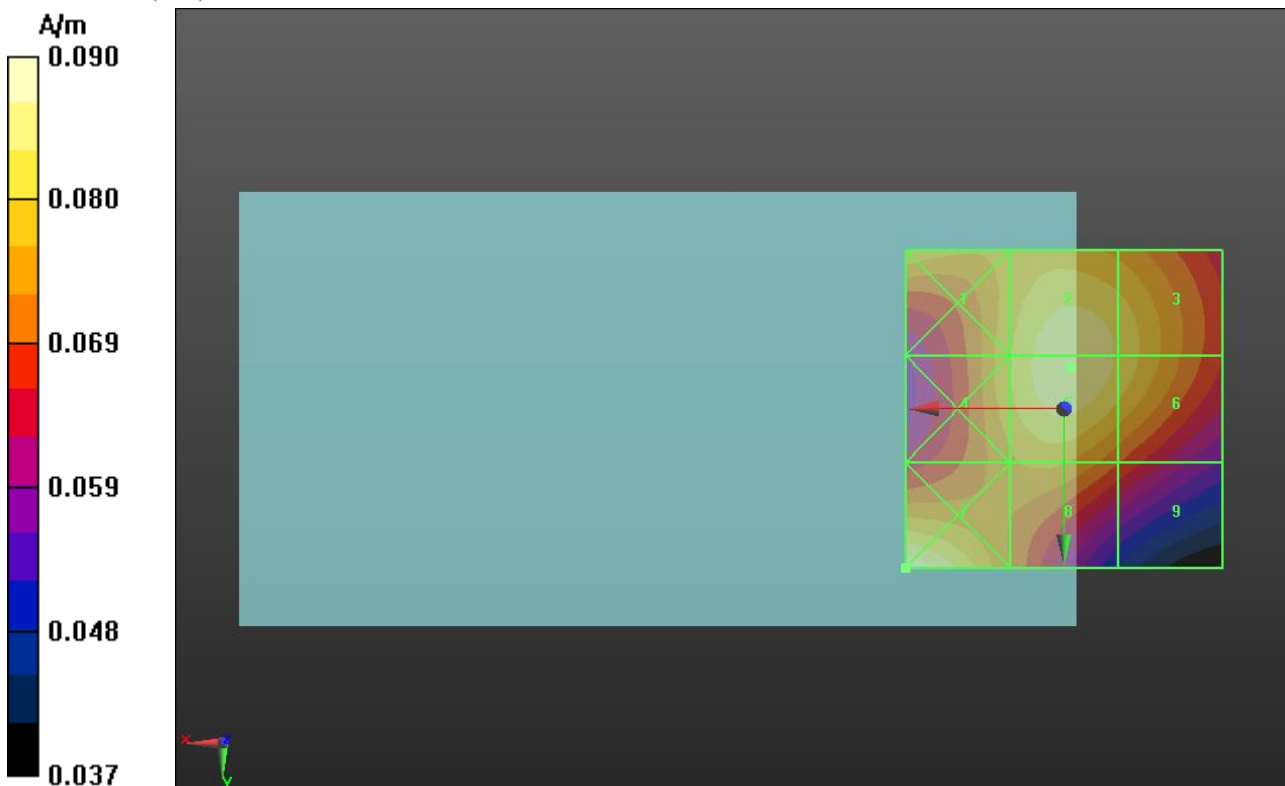
| | | |
|--------------------------------------|--------------------------------------|--------------------------------------|
| Grid 1 M4 0.081 A/m | Grid 2 M4 0.086 A/m | Grid 3 M4 0.083 A/m |
| Grid 4 M4 0.080 A/m | Grid 5 M4 0.086 A/m | Grid 6 M4 0.083 A/m |
| Grid 7 M4 0.090 A/m | Grid 8 M4 0.077 A/m | Grid 9 M4 0.070 A/m |

Cursor:

Total = 0.09045 A/m

H Category: M4

Location: 25, 25, 8.7 mm



HAC-RF Emission

Communication System: CDMA2000; Frequency: 1908.75 MHz; Duty Cycle: 1:1

Phantom section: RF Section

DASY5 Configuration:

- Probe: H3DV6 - SN6157; ; Calibrated: 1/11/2013
- Sensor-Surface: (Fix Surface)
- Electronics: DAE4 Sn1239; Calibrated: 6/6/2012
- Phantom: HAC Test Arch with AMCC; Type: SD HAC P01 BA
- Measurement SW: DASY52, Version 52.8 (5);SEMCAD X Version 14.6.8 (7028)

CDMA BC1 (H-field scan for ANSI C63.19-2007 compliance)/RC3 SO55_ch 1175/Hearing Aid Compatibility Test (101x101x1):

Interpolated grid: dx=0.5000 mm, dy=0.5000 mm

Device Reference Point: 0, 0, -6.3 mm

Reference Value = 0.1140 A/m; Power Drift = -0.08 dB

PMR not calibrated. PMF = 1.000 is applied.

H-field emissions = 0.09587 A/m

Near-field category: M4 (AWF 0 dB)

PMF scaled H-field

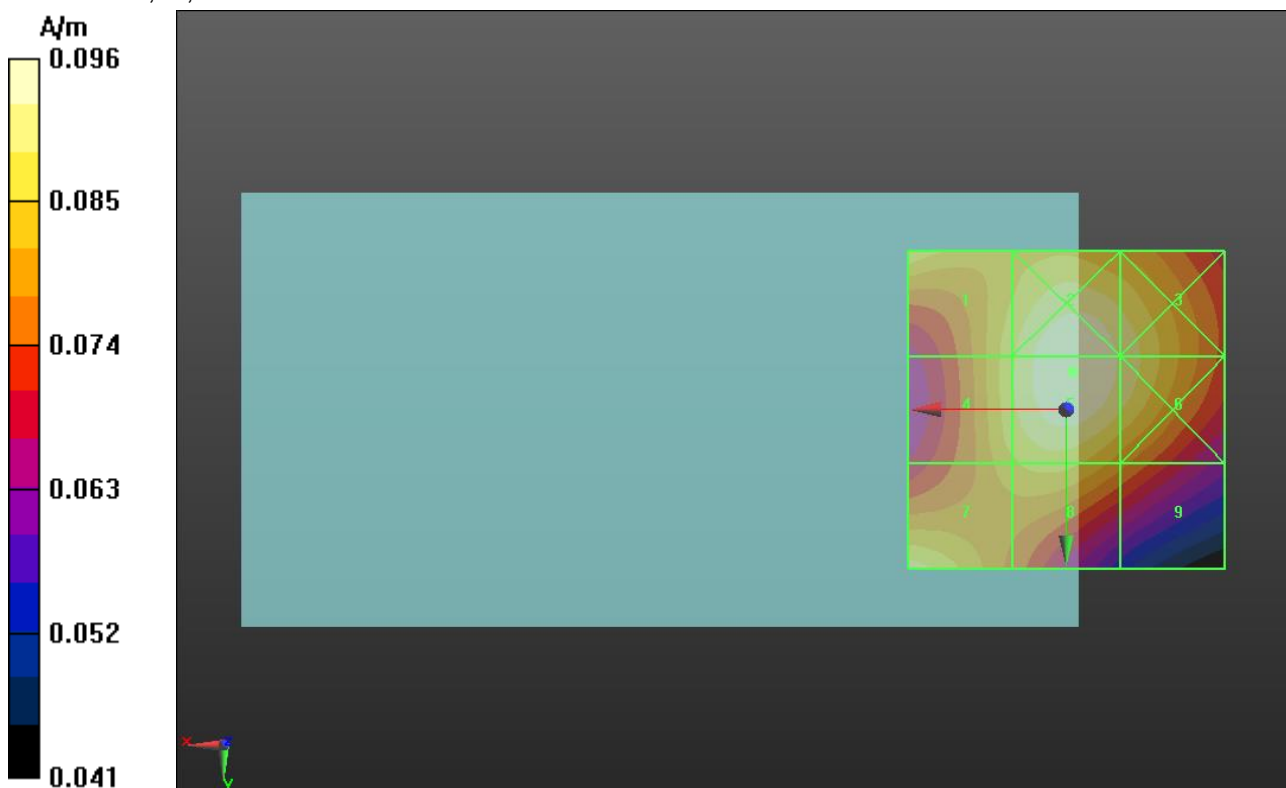
| | | |
|--------------------------------------|--------------------------------------|--------------------------------------|
| Grid 1 M4 0.090 A/m | Grid 2 M4 0.096 A/m | Grid 3 M4 0.092 A/m |
| Grid 4 M4 0.088 A/m | Grid 5 M4 0.096 A/m | Grid 6 M4 0.092 A/m |
| Grid 7 M4 0.091 A/m | Grid 8 M4 0.087 A/m | Grid 9 M4 0.079 A/m |

Cursor:

Total = 0.09587 A/m

H Category: M4

Location: -1, -6, 8.7 mm



HAC-RF Emission

Communication System: CDMA2000; Frequency: 1711.25 MHz; Duty Cycle: 1:1

Phantom section: RF Section

DASY5 Configuration:

- Probe: H3DV6 - SN6157; ; Calibrated: 1/11/2013
- Sensor-Surface: (Fix Surface)
- Electronics: DAE4 Sn1239; Calibrated: 6/6/2012
- Phantom: HAC Test Arch with AMCC; Type: SD HAC P01 BA
- Measurement SW: DASY52, Version 52.8 (5);SEMCAD X Version 14.6.8 (7028)

CDMA BC15 (H-field scan for ANSI C63.19-2007 compliance)/RC3 SO55_ch 25/Hearing Aid Compatibility Test (101x101x1):

Interpolated grid: dx=0.5000 mm, dy=0.5000 mm

Device Reference Point: 0, 0, -6.3 mm

Reference Value = 0.08700 A/m; Power Drift = 0.07 dB

PMR not calibrated. PMF = 1.000 is applied.

H-field emissions = 0.07408 A/m

Near-field category: M4 (AWF 0 dB)

PMF scaled H-field

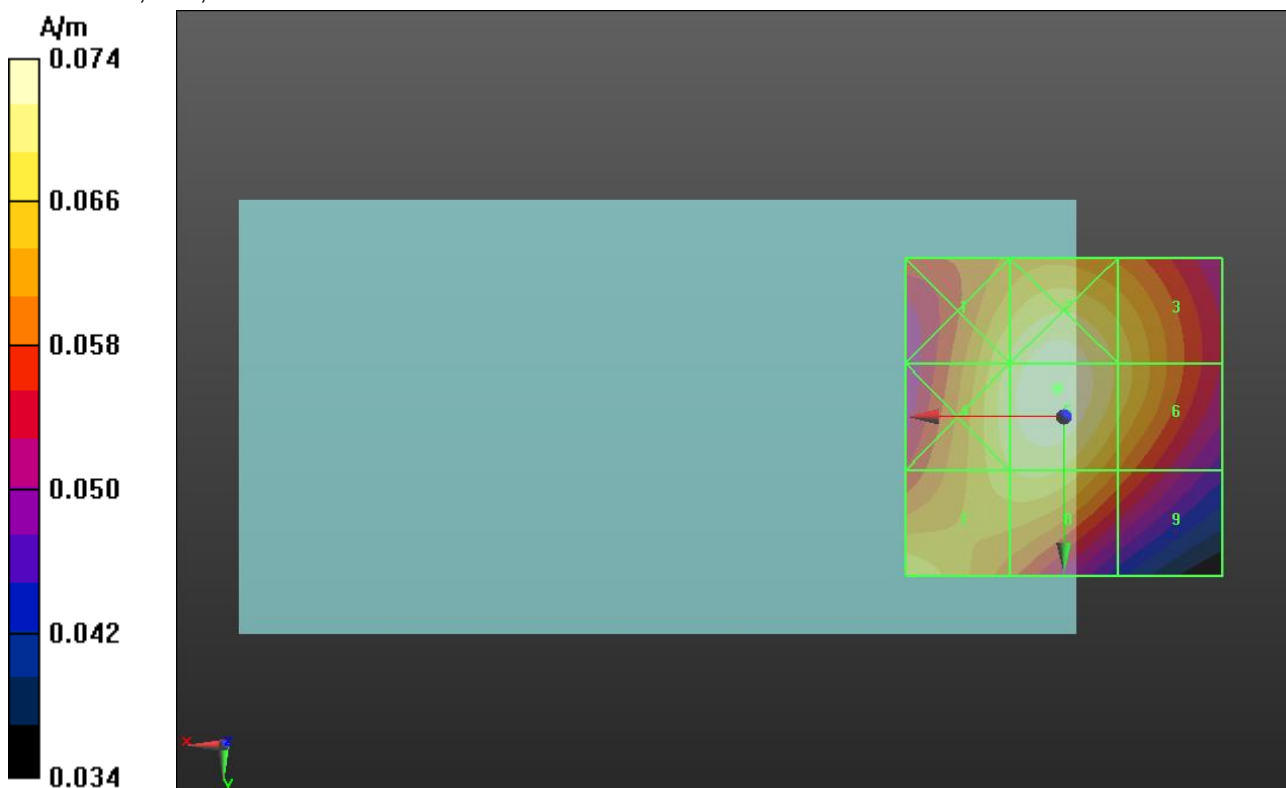
| | | |
|--------------------------------------|--------------------------------------|--------------------------------------|
| Grid 1 M4 0.069 A/m | Grid 2 M4 0.073 A/m | Grid 3 M4 0.068 A/m |
| Grid 4 M4 0.071 A/m | Grid 5 M4 0.074 A/m | Grid 6 M4 0.068 A/m |
| Grid 7 M4 0.069 A/m | Grid 8 M4 0.069 A/m | Grid 9 M4 0.061 A/m |

Cursor:

Total = 0.07408 A/m

H Category: M4

Location: 1, -4.5, 8.7 mm



HAC-RF Emission

Communication System: CDMA2000; Frequency: 1732.5 MHz; Duty Cycle: 1:1

Phantom section: RF Section

DASY5 Configuration:

- Probe: H3DV6 - SN6157; ; Calibrated: 1/11/2013
- Sensor-Surface: (Fix Surface)
- Electronics: DAE4 Sn1239; Calibrated: 6/6/2012
- Phantom: HAC Test Arch with AMCC; Type: SD HAC P01 BA
- Measurement SW: DASY52, Version 52.8 (5);SEMCAD X Version 14.6.8 (7028)

CDMA BC15 (H-field scan for ANSI C63.19-2007 compliance)/RC3 SO55_ch 450/Hearing Aid Compatibility Test (101x101x1):

Interpolated grid: dx=0.5000 mm, dy=0.5000 mm

Device Reference Point: 0, 0, -6.3 mm

Reference Value = 0.08800 A/m; Power Drift = 0.02 dB

PMR not calibrated. PMF = 1.000 is applied.

H-field emissions = 0.07513 A/m

Near-field category: M4 (AWF 0 dB)

PMF scaled H-field

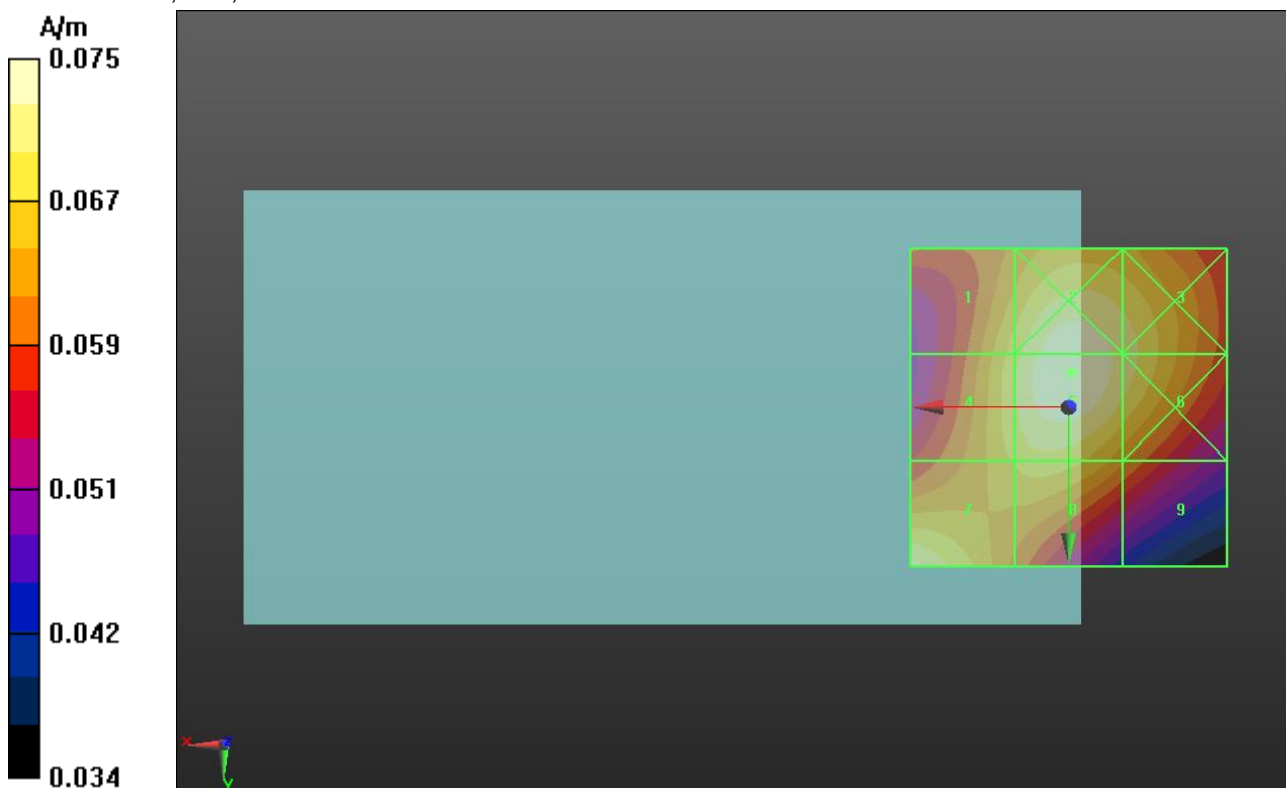
| | | |
|--------------------------------------|--------------------------------------|--------------------------------------|
| Grid 1 M4 0.069 A/m | Grid 2 M4 0.075 A/m | Grid 3 M4 0.071 A/m |
| Grid 4 M4 0.070 A/m | Grid 5 M4 0.075 A/m | Grid 6 M4 0.071 A/m |
| Grid 7 M4 0.074 A/m | Grid 8 M4 0.069 A/m | Grid 9 M4 0.062 A/m |

Cursor:

Total = 0.07513 A/m

H Category: M4

Location: -0.5, -5.5, 8.7 mm



HAC-RF Emission

Communication System: CDMA2000; Frequency: 1753.75 MHz; Duty Cycle: 1:1

Phantom section: RF Section

DASY5 Configuration:

- Probe: H3DV6 - SN6157; ; Calibrated: 1/11/2013

- Sensor-Surface: (Fix Surface)

- Electronics: DAE4 Sn1239; Calibrated: 6/6/2012

- Phantom: HAC Test Arch with AMCC; Type: SD HAC P01 BA

- Measurement SW: DASY52, Version 52.8 (5);SEMCAD X Version 14.6.8 (7028)

CDMA BC15 (H-field scan for ANSI C63.19-2007 compliance)/RC3 SO55_ch 875/Hearing Aid Compatibility Test (101x101x1): Interpolated grid: dx=0.5000 mm, dy=0.5000 mm

Device Reference Point: 0, 0, -6.3 mm

Reference Value = 0.1010 A/m; Power Drift = -0.01 dB

PMR not calibrated. PMF = 1.000 is applied.

H-field emissions = 0.08498 A/m

Near-field category: M4 (AWF 0 dB)

PMF scaled H-field

| | | |
|--------------------------------------|--------------------------------------|--------------------------------------|
| Grid 1 M4 0.079 A/m | Grid 2 M4 0.084 A/m | Grid 3 M4 0.080 A/m |
| Grid 4 M4 0.081 A/m | Grid 5 M4 0.085 A/m | Grid 6 M4 0.080 A/m |
| Grid 7 M4 0.090 A/m | Grid 8 M4 0.081 A/m | Grid 9 M4 0.071 A/m |

Cursor:

Total = 0.09029 A/m

H Category: M4

Location: 25, 25, 8.7 mm

