

## HAC-RF Emission

Communication System: CDMA2000; Frequency: 824.7 MHz; Duty Cycle: 1:1

Phantom section: RF Section

DASY5 Configuration:

- Probe: ER3DV6 - SN2339; ConvF(1, 1, 1); Calibrated: 1/11/2013;
- Sensor-Surface: (Fix Surface)
- Electronics: DAE4 Sn1239; Calibrated: 6/6/2012
- Phantom: HAC Test Arch with AMCC; Type: SD HAC P01 BA
- Measurement SW: DASY52, Version 52.8 (5); SEMCAD X Version 14.6.8 (7028)

## CDMA BC0 (E-field scan for ANSI C63.19-2007 compliance)/RC3 SO55\_ch 1013/Hearing Aid Compatibility Test (101x101x1): Interpolated grid: dx=0.5000 mm, dy=0.5000 mm

Device Reference Point: 0, 0, -6.3 mm

Reference Value = 80.82 V/m; Power Drift = -0.10 dB

PMR not calibrated. PMF = 1.000 is applied.

E-field emissions = 61.27 V/m

**Near-field category: M4 (AWF 0 dB)**

PMF scaled E-field

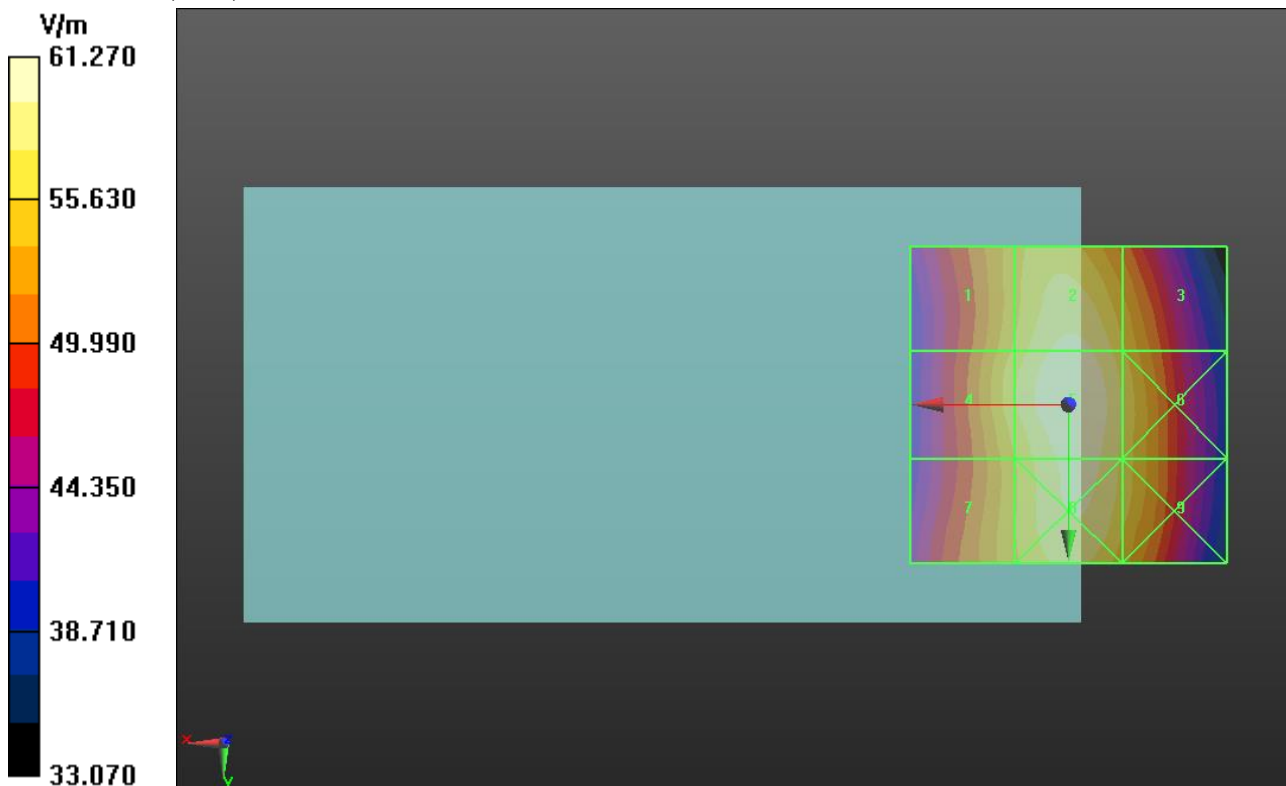
<b>Grid 1 M4</b> <b>56.09 V/m</b>	<b>Grid 2 M4</b> <b>60.00 V/m</b>	<b>Grid 3 M4</b> <b>56.14 V/m</b>
<b>Grid 4 M4</b> <b>57.32 V/m</b>	<b>Grid 5 M4</b> <b>61.27 V/m</b>	<b>Grid 6 M4</b> <b>57.56 V/m</b>
<b>Grid 7 M4</b> <b>55.56 V/m</b>	<b>Grid 8 M4</b> <b>60.08 V/m</b>	<b>Grid 9 M4</b> <b>57.13 V/m</b>

**Cursor:**

Total = 61.27 V/m

E Category: M4

Location: -0.5, -0.5, 8.7 mm



### HAC-RF Emission

Communication System: CDMA2000; Frequency: 836.52 MHz; Duty Cycle: 1:1

Phantom section: RF Section

DASY5 Configuration:

- Probe: ER3DV6 - SN2339; ConvF(1, 1, 1); Calibrated: 1/11/2013;
- Sensor-Surface: (Fix Surface)
- Electronics: DAE4 Sn1239; Calibrated: 6/6/2012
- Phantom: HAC Test Arch with AMCC; Type: SD HAC P01 BA
- Measurement SW: DASY52, Version 52.8 (5); SEMCAD X Version 14.6.8 (7028)

### CDMA BC0 (E-field scan for ANSI C63.19-2007 compliance)/RC3 SO55\_ch 384/Hearing Aid Compatibility Test (101x101x1): Interpolated grid: dx=0.5000 mm, dy=0.5000 mm

Device Reference Point: 0, 0, -6.3 mm

Reference Value = 74.75 V/m; Power Drift = -0.07 dB

PMR not calibrated. PMF = 1.000 is applied.

E-field emissions = 56.96 V/m

**Near-field category: M4 (AWF 0 dB)**

PMF scaled E-field

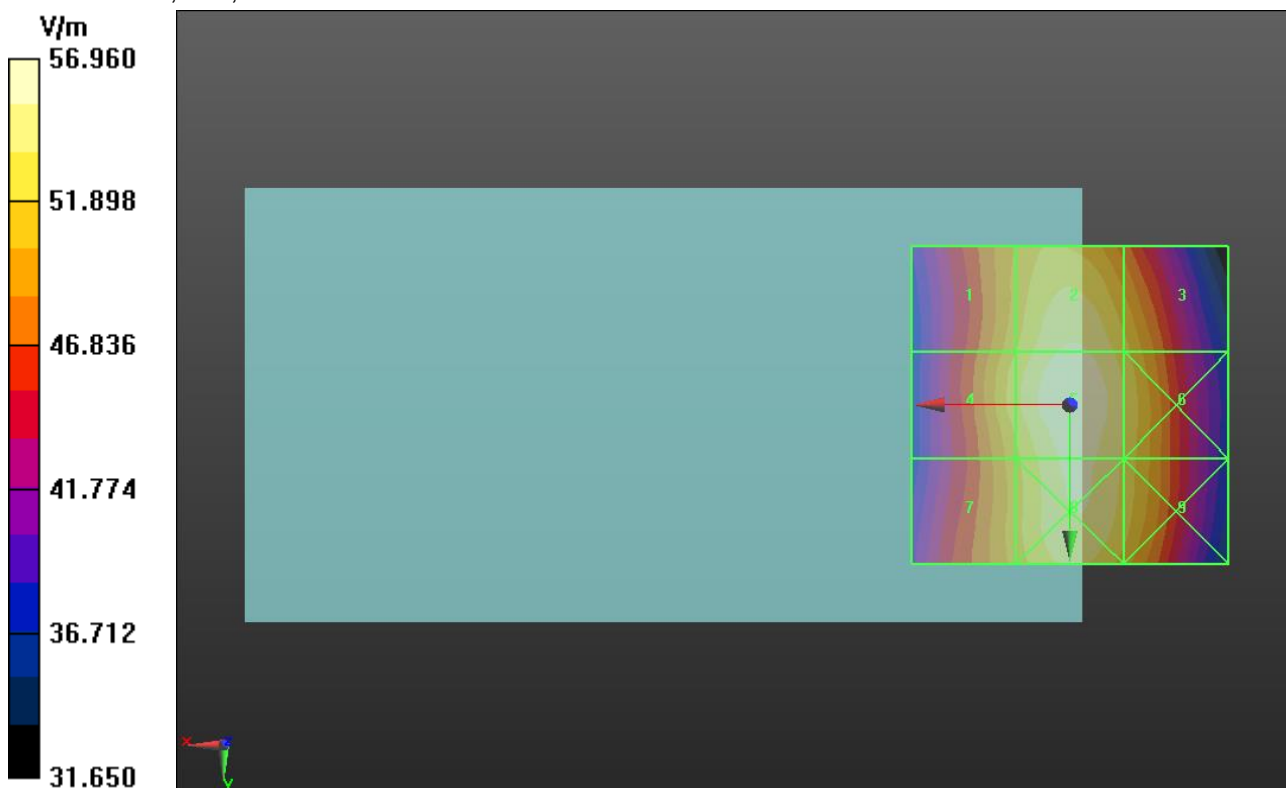
Grid 1 <b>M4</b> <b>51.89 V/m</b>	Grid 2 <b>M4</b> <b>55.59 V/m</b>	Grid 3 <b>M4</b> <b>52.64 V/m</b>
Grid 4 <b>M4</b> <b>53.15 V/m</b>	Grid 5 <b>M4</b> <b>56.96 V/m</b>	Grid 6 <b>M4</b> <b>53.77 V/m</b>
Grid 7 <b>M4</b> <b>51.49 V/m</b>	Grid 8 <b>M4</b> <b>55.79 V/m</b>	Grid 9 <b>M4</b> <b>53.30 V/m</b>

**Cursor:**

Total = 56.96 V/m

E Category: M4

Location: -0.5, -0.5, 8.7 mm



### HAC-RF Emission

Communication System: CDMA2000; Frequency: 848.31 MHz; Duty Cycle: 1:1

Phantom section: RF Section

DASY5 Configuration:

- Probe: ER3DV6 - SN2339; ConvF(1, 1, 1); Calibrated: 1/11/2013;
- Sensor-Surface: (Fix Surface)
- Electronics: DAE4 Sn1239; Calibrated: 6/6/2012
- Phantom: HAC Test Arch with AMCC; Type: SD HAC P01 BA
- Measurement SW: DASY52, Version 52.8 (5); SEMCAD X Version 14.6.8 (7028)

### CDMA BC0 (E-field scan for ANSI C63.19-2007 compliance)/RC3 SO55\_ch 777/Hearing Aid Compatibility Test (101x101x1): Interpolated grid: dx=0.5000 mm, dy=0.5000 mm

Device Reference Point: 0, 0, -6.3 mm

Reference Value = 68.92 V/m; Power Drift = 0.02 dB

PMR not calibrated. PMF = 1.000 is applied.

E-field emissions = 51.99 V/m

Near-field category: **M4 (AWF 0 dB)**

PMF scaled E-field

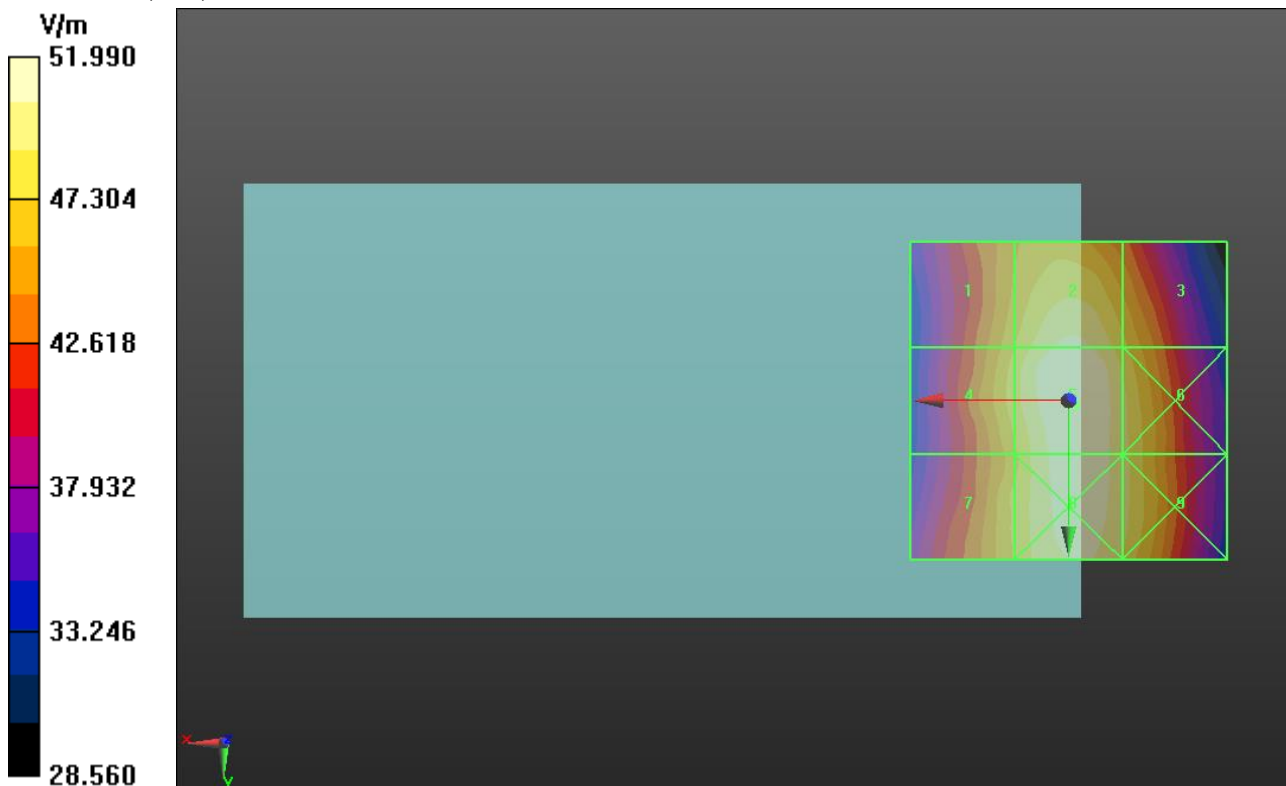
<b>Grid 1 M4</b> <b>47.33 V/m</b>	<b>Grid 2 M4</b> <b>50.86 V/m</b>	<b>Grid 3 M4</b> <b>47.94 V/m</b>
<b>Grid 4 M4</b> <b>48.30 V/m</b>	<b>Grid 5 M4</b> <b>51.99 V/m</b>	<b>Grid 6 M4</b> <b>49.49 V/m</b>
<b>Grid 7 M4</b> <b>47.77 V/m</b>	<b>Grid 8 M4</b> <b>51.62 V/m</b>	<b>Grid 9 M4</b> <b>49.53 V/m</b>

**Cursor:**

Total = 51.99 V/m

E Category: M4

Location: -1, 0.5, 8.7 mm



### HAC-RF Emission

Communication System: CDMA2000; Frequency: 1851.25 MHz; Duty Cycle: 1:1

Phantom section: RF Section

DASY5 Configuration:

- Probe: ER3DV6 - SN2339; ConvF(1, 1, 1); Calibrated: 1/11/2013;

- Sensor-Surface: (Fix Surface)

- Electronics: DAE4 Sn1239; Calibrated: 6/6/2012

- Phantom: HAC Test Arch with AMCC; Type: SD HAC P01 BA

- Measurement SW: DASY52, Version 52.8 (5); SEMCAD X Version 14.6.8 (7028)

### CDMA BC1 (E-field scan for ANSI C63.19-2007 compliance)/RC3 SO55\_ch 25/Hearing Aid Compatibility Test (101x101x1): Interpolated grid: dx=0.5000 mm, dy=0.5000 mm

Device Reference Point: 0, 0, -6.3 mm

Reference Value = 25.15 V/m; Power Drift = -0.02 dB

PMR not calibrated. PMF = 1.000 is applied.

E-field emissions = 27.31 V/m

**Near-field category: M4 (AWF 0 dB)**

PMF scaled E-field

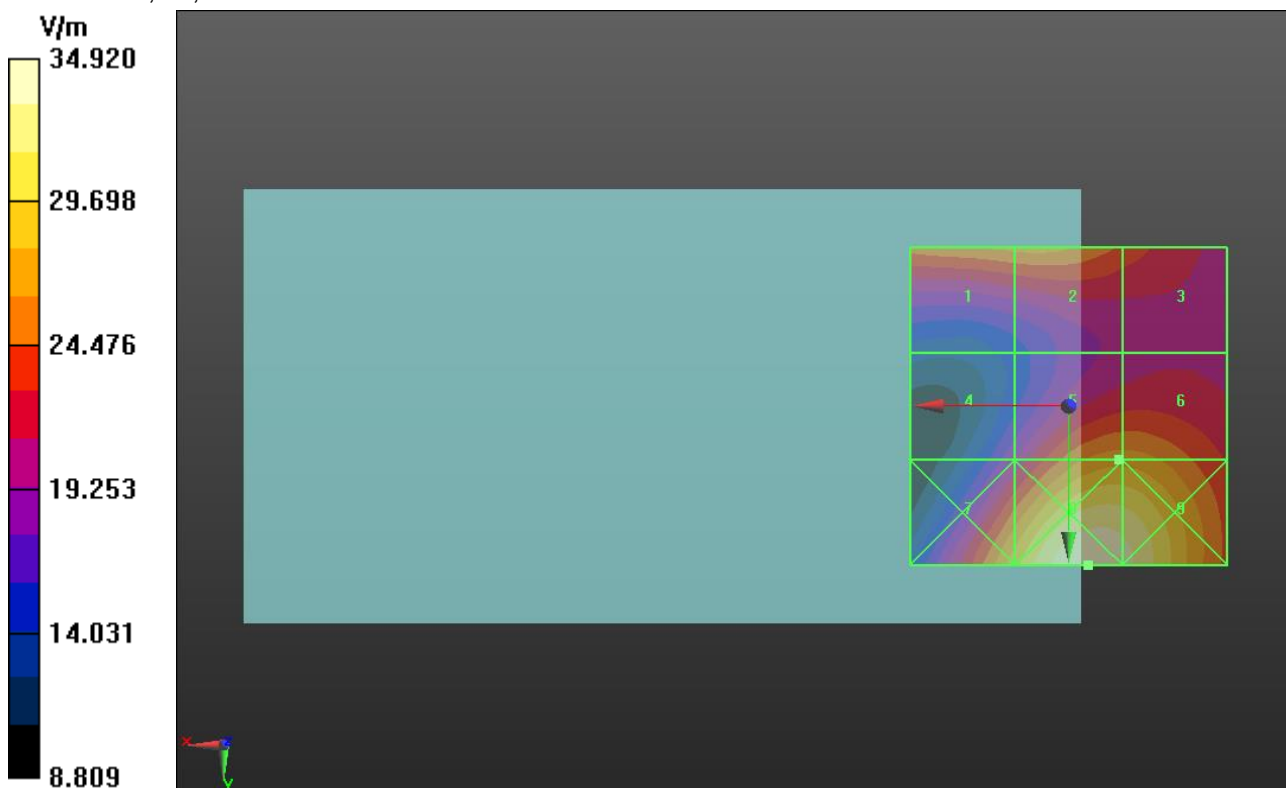
Grid 1 M4 <b>26.79 V/m</b>	Grid 2 M4 <b>27.02 V/m</b>	Grid 3 M4 <b>24.17 V/m</b>
Grid 4 M4 <b>19.48 V/m</b>	Grid 5 M4 <b>27.31 V/m</b>	Grid 6 M4 <b>27.30 V/m</b>
Grid 7 M4 <b>29.18 V/m</b>	Grid 8 M4 <b>34.92 V/m</b>	Grid 9 M4 <b>33.91 V/m</b>

**Cursor:**

Total = 34.92 V/m

E Category: M4

Location: -3, 25, 8.7 mm



## HAC-RF Emission

Communication System: CDMA2000; Frequency: 1880 MHz; Duty Cycle: 1:1

Phantom section: RF Section

DASY5 Configuration:

- Probe: ER3DV6 - SN2339; ConvF(1, 1, 1); Calibrated: 1/11/2013;
- Sensor-Surface: (Fix Surface)
- Electronics: DAE4 Sn1239; Calibrated: 6/6/2012
- Phantom: HAC Test Arch with AMCC; Type: SD HAC P01 BA
- Measurement SW: DASY52, Version 52.8 (5); SEMCAD X Version 14.6.8 (7028)

## CDMA BC1 (E-field scan for ANSI C63.19-2007 compliance)/RC3 SO55\_ch 600/Hearing Aid Compatibility Test (101x101x1): Interpolated grid: dx=0.5000 mm, dy=0.5000 mm

Device Reference Point: 0, 0, -6.3 mm

Reference Value = 27.89 V/m; Power Drift = -0.01 dB

PMR not calibrated. PMF = 1.000 is applied.

E-field emissions = 28.49 V/m

Near-field category: **M4 (AWF 0 dB)**

PMF scaled E-field

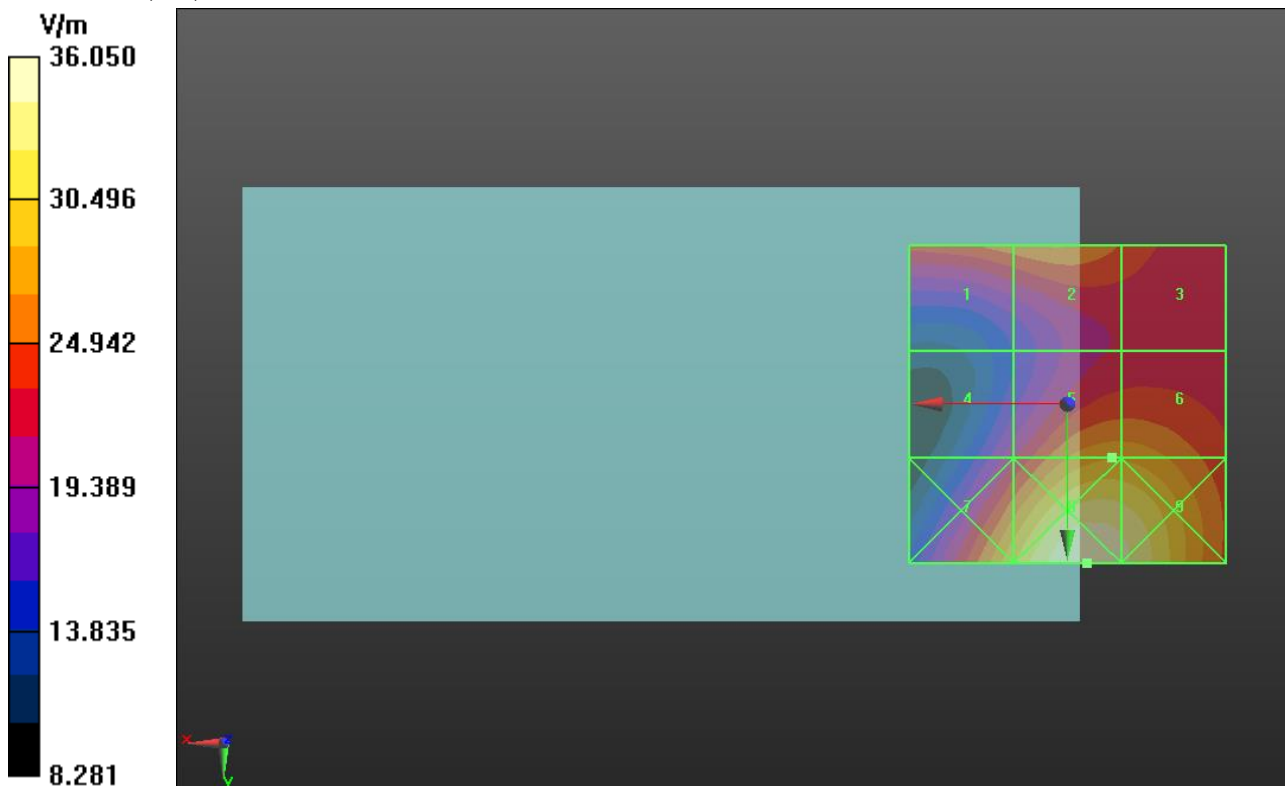
Grid 1 <b>M4</b> <b>26.23 V/m</b>	Grid 2 <b>M4</b> <b>27.02 V/m</b>	Grid 3 <b>M4</b> <b>24.84 V/m</b>
Grid 4 <b>M4</b> <b>21.15 V/m</b>	Grid 5 <b>M4</b> <b>28.49 V/m</b>	Grid 6 <b>M4</b> <b>28.42 V/m</b>
Grid 7 <b>M4</b> <b>30.39 V/m</b>	Grid 8 <b>M4</b> <b>36.05 V/m</b>	Grid 9 <b>M4</b> <b>34.79 V/m</b>

### Cursor:

Total = 36.05 V/m

E Category: M4

Location: -3, 25, 8.7 mm



### HAC-RF Emission

Communication System: CDMA2000; Frequency: 1908.75 MHz; Duty Cycle: 1:1

Phantom section: RF Section

DASY5 Configuration:

- Probe: ER3DV6 - SN2339; ConvF(1, 1, 1); Calibrated: 1/11/2013;
- Sensor-Surface: (Fix Surface)
- Electronics: DAE4 Sn1239; Calibrated: 6/6/2012
- Phantom: HAC Test Arch with AMCC; Type: SD HAC P01 BA
- Measurement SW: DASY52, Version 52.8 (5); SEMCAD X Version 14.6.8 (7028)

### CDMA BC1 (E-field scan for ANSI C63.19-2007 compliance)/RC3 SO55\_ch 1175/Hearing Aid Compatibility Test (101x101x1):

Interpolated grid: dx=0.5000 mm, dy=0.5000 mm

Device Reference Point: 0, 0, -6.3 mm

Reference Value = 29.01 V/m; Power Drift = 0.07 dB

PMR not calibrated. PMF = 1.000 is applied.

E-field emissions = 31.71 V/m

**Near-field category: M4 (AWF 0 dB)**

PMF scaled E-field

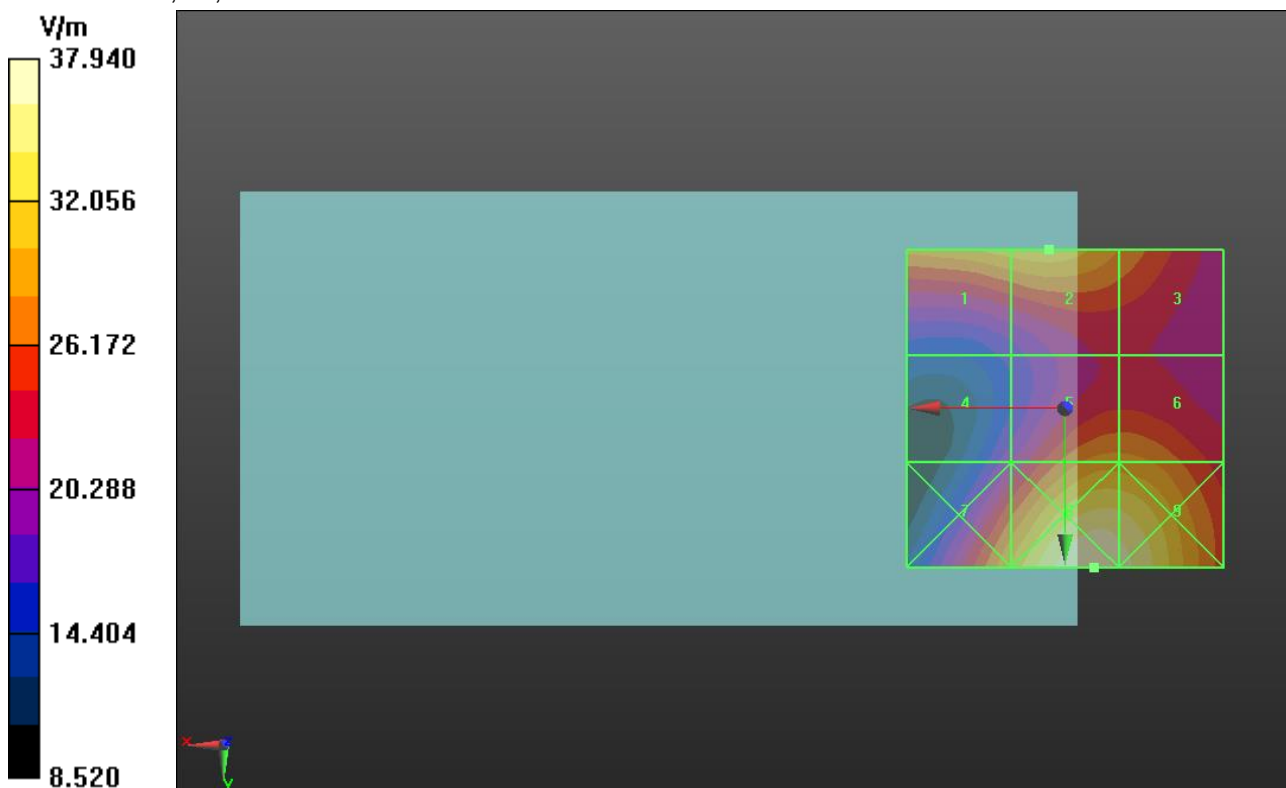
Grid 1 <b>M4</b> <b>31.23 V/m</b>	Grid 2 <b>M4</b> <b>31.71 V/m</b>	Grid 3 <b>M4</b> <b>28.22 V/m</b>
Grid 4 <b>M4</b> <b>20.38 V/m</b>	Grid 5 <b>M4</b> <b>29.26 V/m</b>	Grid 6 <b>M4</b> <b>29.15 V/m</b>
Grid 7 <b>M4</b> <b>30.60 V/m</b>	Grid 8 <b>M4</b> <b>37.94 V/m</b>	Grid 9 <b>M4</b> <b>36.95 V/m</b>

**Cursor:**

Total = 37.94 V/m

E Category: M4

Location: -4.5, 25, 8.7 mm



## HAC-RF Emission

Communication System: CDMA2000; Frequency: 1711.25 MHz; Duty Cycle: 1:1

Phantom section: RF Section

DASY5 Configuration:

- Probe: ER3DV6 - SN2339; ConvF(1, 1, 1); Calibrated: 1/11/2013;
- Sensor-Surface: (Fix Surface)
- Electronics: DAE4 Sn1239; Calibrated: 6/6/2012
- Phantom: HAC Test Arch with AMCC; Type: SD HAC P01 BA
- Measurement SW: DASY52, Version 52.8 (5); SEMCAD X Version 14.6.8 (7028)

## CDMA BC15 (E-field scan for ANSI C63.19-2007 compliance)/RC3 SO55\_ch 25/Hearing Aid Compatibility Test (101x101x1): Interpolated grid: dx=0.5000 mm, dy=0.5000 mm

Device Reference Point: 0, 0, -6.3 mm

Reference Value = 18.08 V/m; Power Drift = 0.01 dB

PMR not calibrated. PMF = 1.000 is applied.

E-field emissions = 22.96 V/m

Near-field category: **M4 (AWF 0 dB)**

PMF scaled E-field

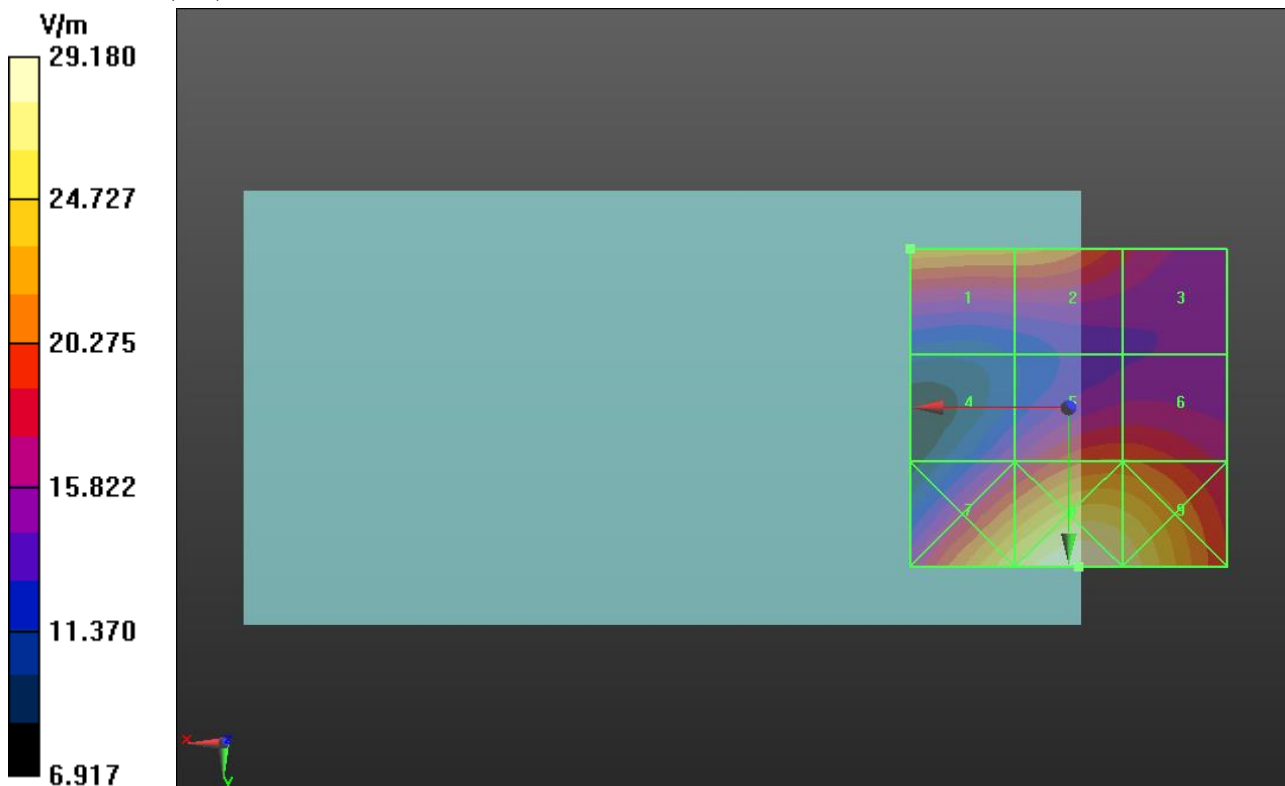
Grid 1 <b>M4</b> <b>22.96 V/m</b>	Grid 2 <b>M4</b> <b>22.34 V/m</b>	Grid 3 <b>M4</b> <b>18.05 V/m</b>
Grid 4 <b>M4</b> <b>16.23 V/m</b>	Grid 5 <b>M4</b> <b>20.64 V/m</b>	Grid 6 <b>M4</b> <b>20.59 V/m</b>
Grid 7 <b>M4</b> <b>26.36 V/m</b>	Grid 8 <b>M4</b> <b>29.18 V/m</b>	Grid 9 <b>M4</b> <b>27.60 V/m</b>

### Cursor:

Total = 29.18 V/m

E Category: M4

Location: -1.5, 25, 8.7 mm



### HAC-RF Emission

Communication System: CDMA2000; Frequency: 1732.5 MHz; Duty Cycle: 1:1

Phantom section: RF Section

DASY5 Configuration:

- Probe: ER3DV6 - SN2339; ConvF(1, 1, 1); Calibrated: 1/11/2013;
- Sensor-Surface: (Fix Surface)
- Electronics: DAE4 Sn1239; Calibrated: 6/6/2012
- Phantom: HAC Test Arch with AMCC; Type: SD HAC P01 BA
- Measurement SW: DASY52, Version 52.8 (5);SEMCAD X Version 14.6.8 (7028)

### CDMA BC15 (E-field scan for ANSI C63.19-2007 compliance)/RC3 SO55\_ch 450/Hearing Aid Compatibility Test (101x101x1): Interpolated grid: dx=0.5000 mm, dy=0.5000 mm

Device Reference Point: 0, 0, -6.3 mm

Reference Value = 21.68 V/m; Power Drift = -0.07 dB

PMR not calibrated. PMF = 1.000 is applied.

E-field emissions = 24.90 V/m

**Near-field category: M4 (AWF 0 dB)**

PMF scaled E-field

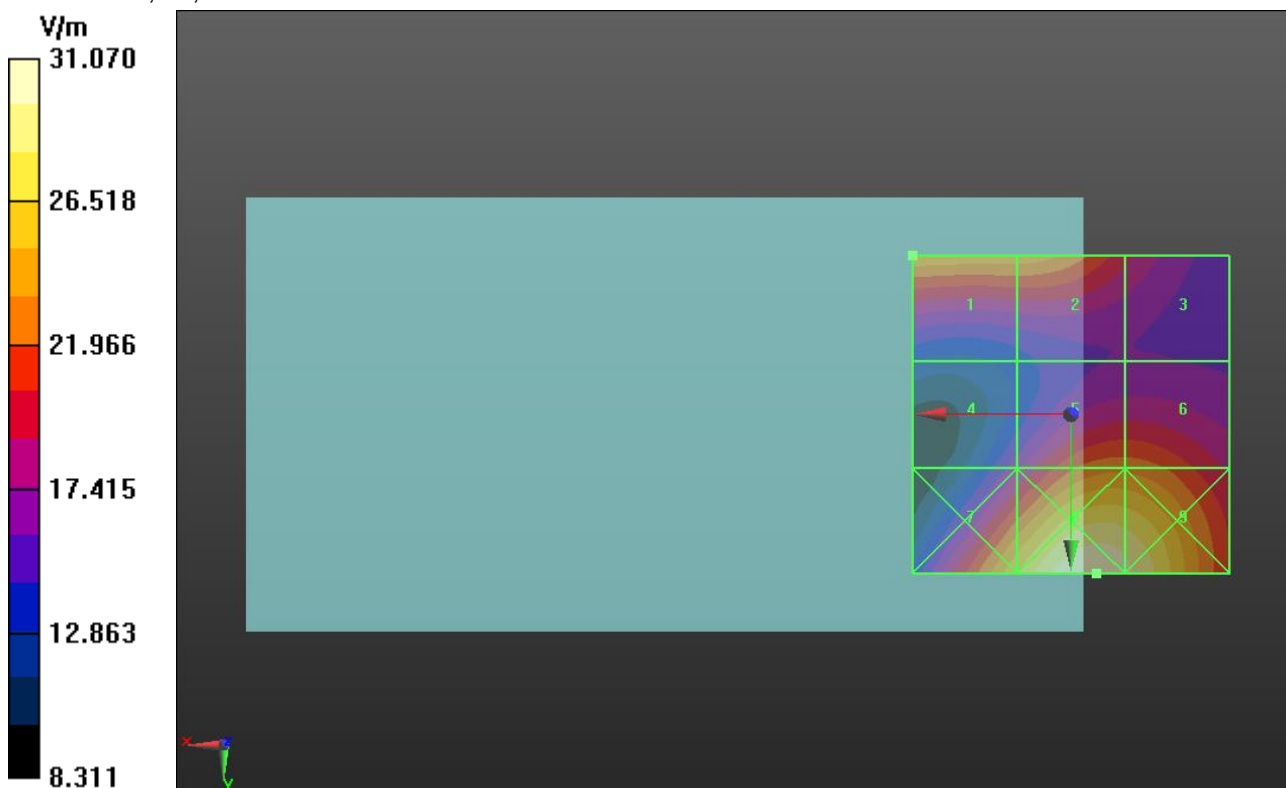
Grid 1 <b>M4</b> <b>24.90 V/m</b>	Grid 2 <b>M4</b> <b>24.55 V/m</b>	Grid 3 <b>M4</b> <b>19.46 V/m</b>
Grid 4 <b>M4</b> <b>17.18 V/m</b>	Grid 5 <b>M4</b> <b>23.13 V/m</b>	Grid 6 <b>M4</b> <b>23.10 V/m</b>
Grid 7 <b>M4</b> <b>26.52 V/m</b>	Grid 8 <b>M4</b> <b>31.07 V/m</b>	Grid 9 <b>M4</b> <b>30.08 V/m</b>

**Cursor:**

Total = 31.07 V/m

E Category: M4

Location: -4, 25, 8.7 mm





### HAC-RF Emission

Communication System: CDMA2000; Frequency: 1753.75 MHz; Duty Cycle: 1:1

Phantom section: RF Section

DASY5 Configuration:

- Probe: ER3DV6 - SN2339; ConvF(1, 1, 1); Calibrated: 1/11/2013;
- Sensor-Surface: (Fix Surface)
- Electronics: DAE4 Sn1239; Calibrated: 6/6/2012
- Phantom: HAC Test Arch with AMCC; Type: SD HAC P01 BA
- Measurement SW: DASY52, Version 52.8 (5); SEMCAD X Version 14.6.8 (7028)

### CDMA BC15 (E-field scan for ANSI C63.19-2007 compliance)/RC3 SO55\_ch 875/Hearing Aid Compatibility Test (101x101x1): Interpolated grid: dx=0.5000 mm, dy=0.5000 mm

Device Reference Point: 0, 0, -6.3 mm

Reference Value = 24.76 V/m; Power Drift = 0.02 dB

PMR not calibrated. PMF = 1.000 is applied.

E-field emissions = 27.25 V/m

**Near-field category: M4 (AWF 0 dB)**

PMF scaled E-field

Grid 1 <b>M4</b> <b>27.25 V/m</b>	Grid 2 <b>M4</b> <b>27.16 V/m</b>	Grid 3 <b>M4</b> <b>21.14 V/m</b>
Grid 4 <b>M4</b> <b>19.51 V/m</b>	Grid 5 <b>M4</b> <b>25.98 V/m</b>	Grid 6 <b>M4</b> <b>25.90 V/m</b>
Grid 7 <b>M4</b> <b>29.95 V/m</b>	Grid 8 <b>M4</b> <b>35.41 V/m</b>	Grid 9 <b>M4</b> <b>34.14 V/m</b>

**Cursor:**

Total = 35.41 V/m

E Category: M4

Location: -3, 25, 8.7 mm

