

17. TEST PHOTOGRAPHS

See following Attached Pages for setup photographs.



| | | | | |
|--|---|---------------------------------------|---|--|
| FCC ID: ZNFUS730 |  PCTEST ENGINEERING LABORATORY, INC. | HAC (RF EMISSIONS) TEST REPORT |  LG | Reviewed by: Quality Manager |
| HAC Filename: 0Y1207090916.ZNF | Test Dates: July 10-12, 2012 | EUT Type: Portable Handset | Page 79 of 81 | |



Figure 17-1
Ear Reference Point HAC Phantom Alignment

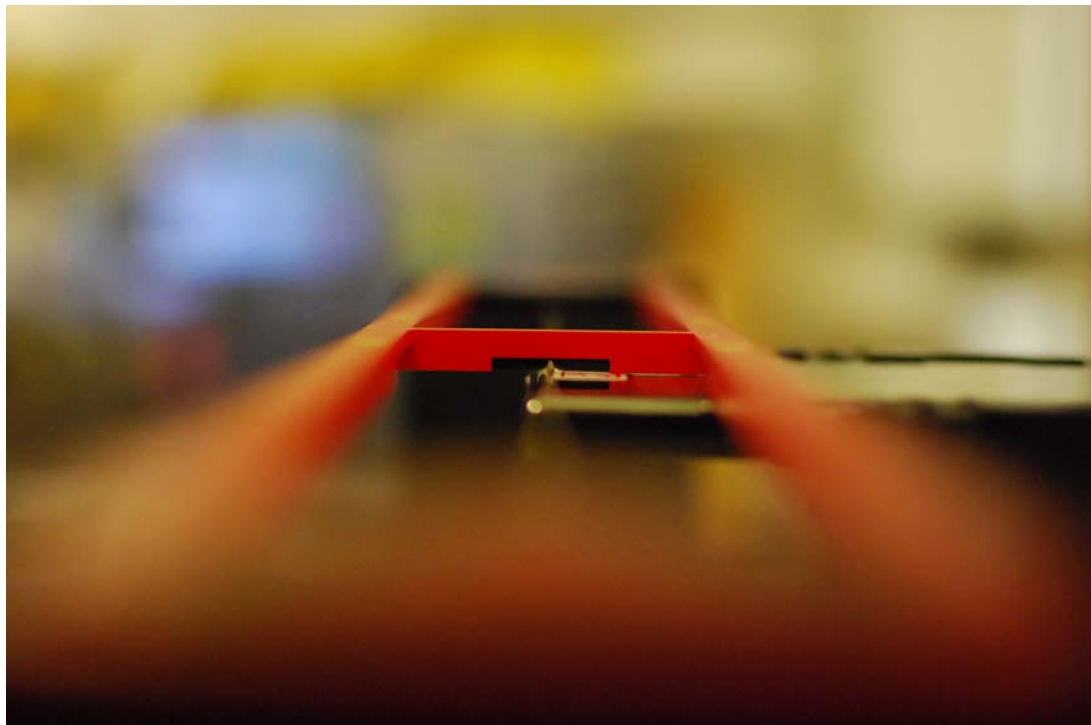




Figure 17-2
HAC Phantom Plane Alignment

| | | | |
|--|--|---------------------------------------|--|
| FCC ID: ZNFUS730 |  PCTEST <small>ENGINEERING LABORATORY, INC.</small> | HAC (RF EMISSIONS) TEST REPORT |  Reviewed by: Quality Manager |
| HAC Filename: OY1207090916.ZNF | Test Dates: July 10-12, 2012 | EUT Type: Portable Handset | Page 80 of 81 |

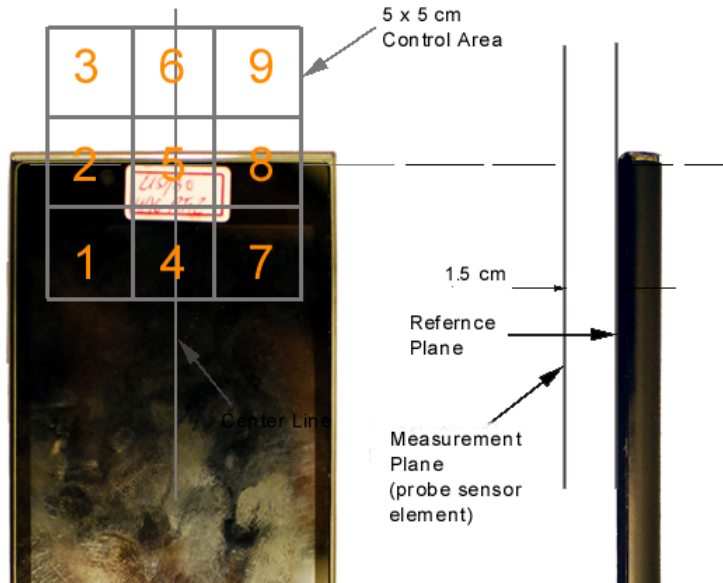


Figure 17-3
5x5 Scan grid above WD

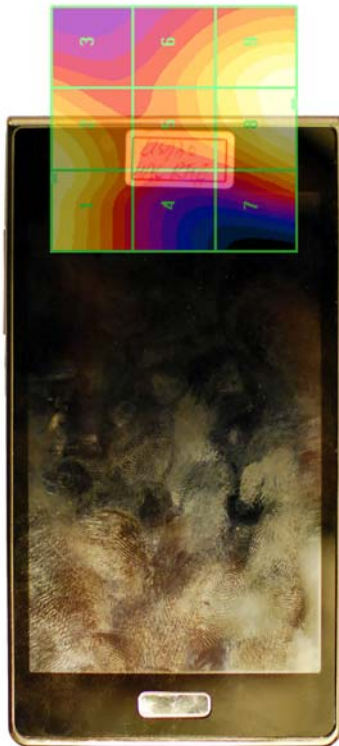


Figure 17-4
E-Field WD Scan overlay

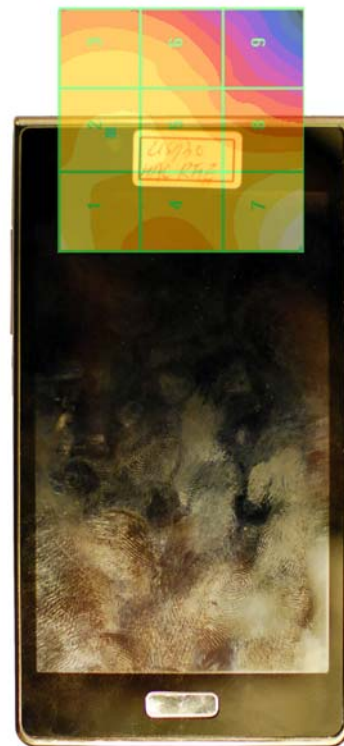


Figure 17-5
H-Field WD Scan overlay

| | | | | |
|-----------------------------------|--|--------------------------------|----|---------------------------------|
| FCC ID: ZNFUS730 | PCTEST ENGINEERING LABORATORY, INC. | HAC (RF EMISSIONS) TEST REPORT | LG | Reviewed by: Quality Manager |
| HAC Filename: 0Y1207090916.ZNF | Test Dates: July 10-12, 2012 | EUT Type: Portable Handset | | Page 81 of 81 |