



OWNER'S MANUAL

LG TONE Free

Bluetooth® LG Stereo Headset

NOTE: For the proper performance and to prevent any damage to, or misuse of the headset, please read all of the information carefully prior to using the headset.

Any modifications or changes to this manual due to typographical errors or inaccuracies of stated information shall only be made by LG Electronics Inc.



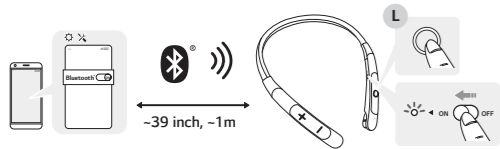
LG TONE NP3

www.lg.com

Copyright © 2021 LG Electronics Inc. All rights reserved

Pairing and Connecting

Fast Pair



- 1 Turn on the *Bluetooth* function on the smartphone or the device to be connected.
- 2 While pressing the **Call/Play button** on the headset, slide the **Power switch** to ON. The headset enters the discovery mode and the blue status indicator turns on.
- 3 When a Fast Pair pop-up appears on the bottom of the smartphone screen, touch "Connect" to establish connection. (It only supports Android™ 6.0 or higher, and requires configuring *Bluetooth* and location information settings of the mobile device.)

The LG TONE Free (TONE-NP3) is a lightweight wireless headset that uses *Bluetooth* technology.

This product can be used as an audio accessory for devices supporting either the A2DP or Hands-Free *Bluetooth* Profile.

Safety Precautions

The following safety precautions are provided to prevent any unexpected accident or damage. Please familiarize yourself with the safety precautions. The safety precautions are classified into "WARNING" and "CAUTION".

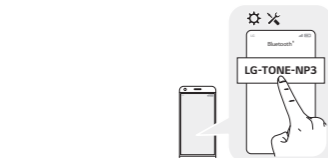
WARNING: Failing to comply with the instructions may result in serious injury or death.

CAUTION: Failing to comply with the instructions may result in minor injury or product damage.

WARNING

- Do not drop the product from a high place. Make sure there is no water, alcohol, or benzene in contact with the product.
- Do not store the product in a wet or dusty place.
- Do not place heavy objects on the product.
- Do not put the product under the water or use it in a humid location such as a bathroom.

4 If the pop-up does not appear, select [LG-TONE-NP3] from the *Bluetooth* menu on the smartphone and connect it (for users of iOS or Android 5.0 or lower versions).



CAUTION: In the list of *Bluetooth* connected devices, LG-TONE-NP3_LE is not the correct model name for connection. Check the model name in use and connect with the model name without "LE". If the headset model name is abnormally displayed on the Android device, change the model name in the *Bluetooth* menu of Connected Device Settings.

NOTE: To connect with another device, perform the above procedure again.

Automatic Reconnection

If you turn on the headset, it will automatically connect to the most recent device (Main or Sub Connected Device) it was connected to. (If a device cannot be found, Search mode will be activated.)

If the product does not automatically connect to the device you want, search for your product on the device you want to connect to and connect it manually.

CAUTION

Do not disassemble, adjust, or repair the product arbitrarily. Do not place the product near excessive heat or flammable material. The product may be damaged if an incompatible charger is used. Make sure that an infant or child does not swallow a magnet or a small component of the product. Make sure that foreign objects do not enter the charger's connectors (charging port and power plug). Failure to do so may result in fire or electric shock.

If you have a medical device implanted, contact your doctor before using this device.

This product has a built-in battery, and the battery cannot be removed or replaced arbitrarily.

For your safety, do not remove the battery incorporated in the product. If you arbitrarily replace the battery or don't replace it correctly, it may explode.

The lithium-ion polymer battery is a hazardous component that can cause injury.

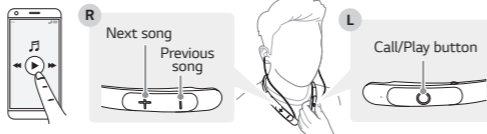
Battery replacement by an unqualified professional can cause damage to your device.

Do not discard the battery arbitrarily. Follow the local procedure for discarding batteries.

In order to prevent unnecessary energy consumption, disconnect the device when fully charged. Always use an easily accessible power outlet for charging your device.

Risk of fire or explosion if the battery is replaced by an incorrect type.

Playing Music



Function	Description
Play / Pause	Briefly press the Call/Play button .
Adjusting the Volume	Briefly press the Volume button (⏮ or ⏭).
Next / Previous song	Press and hold the Volume button (⏮ or ⏭) for one second.

NOTE: You can change the operation method of the function in the touchpad settings of the LG TONE Free app.

Do not store or transport at pressures lower than 11.6 kPa (0.116 bar) and at above 15,000 m (9.32 miles) altitude. Replacement of a battery with an incorrect type that can defeat a safeguard (for example, in the case of some lithium battery types). Disposal of a battery into fire or a hot oven, or mechanically crushing or cutting of a battery, that can result in an explosion. Leaving a battery in an extremely high temperature surrounding environment that can result in an explosion or the leakage of flammable liquid or gas. A battery subjected to extremely low air pressure that may result in an explosion or the leakage of flammable liquid or gas. Do not carelessly throw away old batteries. It can cause an explosion or fire. The disposal method may vary by country and region. Dispose of it in an appropriate manner.

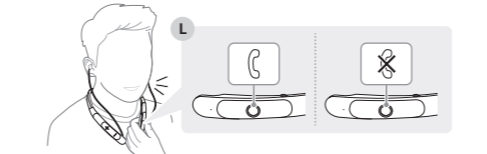
NOTE

- Do not pull the earbud cables with excessive force. If the product is exposed to excessive sweat, clean the product. Keep the earbuds clean.
- Wearing earbuds for a long time may cause pain, and if humidity inside ears continues for a long time, it may cause skin trouble.
- For your safety, do not wear the product while it is being charged.

HD Speaker

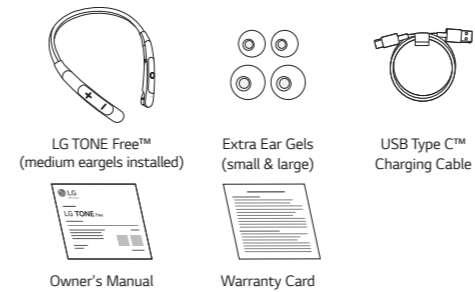
If the communication network of the device you are connecting to supports HD Voice Calling, you can enjoy making voice calls and listening to music in high definition.

Mobile Calling Functions



Function	Status	Description
Receiving Calls while on the Phone	Talking	Briefly press the Call/Play button to accept another call while on a call. The existing call is put on hold. Briefly press the Call/Play button to switch to the call on hold. If the previous call is on hold, you can finish the current call from your smartphone. (The behavior and control may differ by devices or settings.)
Enabling/Disabling Mute	Talking	Press and hold the Volume button (⇐ or ⇒) for one second during a call.
Volume up/down	Talking	Briefly press the Volume button (⏮ or ⏭) during a call.
Rejecting a call	Ringing	Press and hold the Call/Play button .
Answering Calls	Ringing	Briefly press the Call/Play button . - While the vibration alert is disabled, no vibrations occur.
Ending Calls	Talking	Briefly press the Call/Play button twice.
Making Calls	Idle	If you make a call from your smartphone, the call is automatically transferred to the headset.
Switching Calls	Talking	Press and hold the Volume button (⇐) for one second to transfer the call between the headset and smartphone.

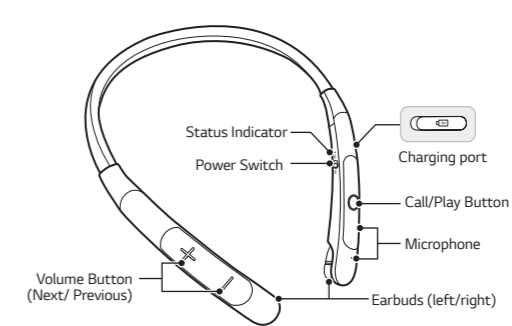
Product Components



NOTE: Actual product design may differ from images shown in manual.

CAUTION: Make sure authentic LG Electronics components are used. Using a non-authentic component may damage the product and thus void the warranty. Use the USB Type C™ cable provided with the product.

Overview

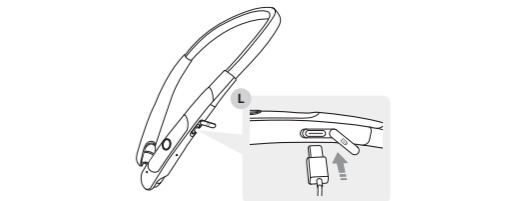


*The appearance and specifications of the actual product may differ depending on the model.

NOTE: To prevent hearing loss, a control sound is played twice or at length when controlling the volume at high volumes.

Charging

Wired Charging

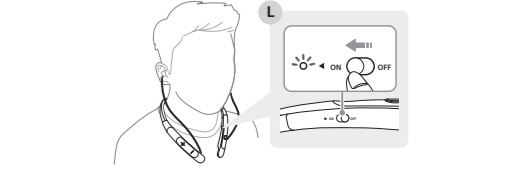


Open the **Charging port** cover of the headset and connect the charging cable to the port. The status indicator indicates the current charging status. While being charged, the headset is powered off.

Status Indicator	Charging State (charger connected)
Red	Charging
Green	Fully charged

NOTE: The charging port of the headset does not supply power to other devices such as smartphones. If the temperature is too high or too low, the status indicator blinks in red and the battery is not charged.

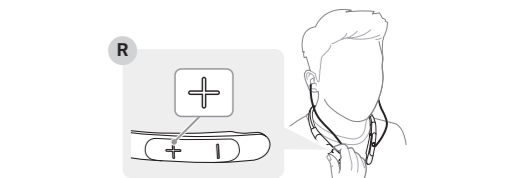
Power On/Off



Status	Description
Power On	Slide the Power switch to ON.
Power Off	Slide the Power switch to OFF.

*When the power is turned on or off, the blue status indicator blinks with vibration and beep.

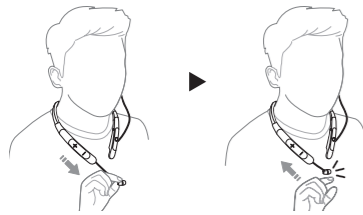
Enabling vibration Alert



The headset is supplied with the vibration alert enabled by default. To enable or disable the vibration alert, press and hold the **Volume button** (⇐) for one second while the device is on standby.

NOTE: If you disable the vibration alert, no vibration occurs when there is an incoming call or you are out of range.

Winding up the Cables



If you pull out your earbuds completely and then let go, then the earbud cables will automatically wind up.

14

Additional Information

1. Radio frequency exposure

This *Bluetooth* LG Stereo Headset is a radio transmitter and receiver. When in operation, it communicates with a *Bluetooth*-equipped mobile device by receiving and transmitting radio frequency (RF) electromagnetic fields (microwaves) in the frequency range 2402 to 2480 MHz. Your *Bluetooth* headset is designed to operate in compliance with the RF exposure guidelines and limits set by national authorities and international health agencies when used with any compatible LG Electronics mobile phone.

2. *Bluetooth* connection precautions

The following environments affect the range and reception of *Bluetooth* signals:

- When walls, metal, human bodies, or other obstacles exist between the *Bluetooth* device and the connected device.
- When equipment that uses 2.4 GHz frequency signals (wireless LANs, wireless phones, microwave ovens, etc.) is placed near the devices being used.
- When using a *Bluetooth* device (TV, laptop, etc.) other than the mobile phone, the sound quality may be affected by the specifications and performance of the device.

3. Potentially explosive atmosphere

Turn off your electronic device when in any area with a potentially explosive atmosphere. Although this is uncommon, your electronic device could generate sparks. Sparks in such areas could cause an explosion or fire resulting in bodily injury or even death. Areas with a potentially explosive atmosphere are often but not always clearly marked.

21

Status Indicator

Status	Description
Power On/Off	The blue status indicator flashes.
<i>Bluetooth</i> Search Mode	The blue status indicator is on.
Headset/hands-free profile/call connected	The blue status indicator flashes every 5 seconds.
When there is a problem while charging	The status indicator blinks in red.
Charging (charger connected)	The status indicator turns on in red.
Charging complete (charger connected)	The status indicator turns on in green.

Out of Range

If the device connected to the product is out of effective communication range, the communication signal becomes weak and the communication is lost. The effective communication range may vary depending on surrounding and other conditions.

If the device comes back within effective communication range, the product automatically reconnects to the device. If the device is not automatically reconnected, press and hold the **Call/Play button** on the headset and push the **Power switch** to ON to reconnect it manually.

15

4. Emergency calls

IMPORTANT!

This *Bluetooth* headset and the electronic device connected to the headset operate using radio signals and mobile and landline networks as well as user-programmed functions, which cannot guarantee connection under all conditions. Therefore, you should never rely solely upon any electronic device for essential communications (e.g., medical emergencies). Remember, in order to make or receive calls, the headset and the electronic device connected to the headset must be switched on and in a service area with adequate mobile signal strength. Emergency calls may not be possible on all mobile phone networks or when certain network services and/or phone features are in use. Check with your local service provider.

5. Battery information

A rechargeable battery has a long service life if treated properly. A new battery or one that has not been used for a long period of time could have reduced capacity the first few times it is used. Do not expose the battery to extreme temperatures, never above +50°C (+122°F) or below -10°C (+14°F). For maximum battery capacity, use the battery at room temperature. If the battery is used in low temperatures, the battery capacity will be reduced. The battery can only be charged in temperatures between 0°C (+32°F) and +45°C (+113°F).

6. Recycling the battery in your *Bluetooth* headset

The battery in your *Bluetooth* headset must be disposed of properly and should never be placed in municipal waste. The LG Electronics service partner that removes the battery will dispose of it according to local regulations.

22

If a device that is not in use goes out of communication range when multiple devices are connected, the product vibrates and a voice message indicates that the connection is lost. In this case, the automatic reconnection function is not supported.

LG TONE Free App

If you install the "LG TONE Free" app, you can use Check headset Battery, Voice Alert, Change Equalizer Mode, Check Last Connected Location Information, and Find My headset functions. Check out the app for more details.

To install the "LG TONE Free" app, search LG TONE Free in the Google Play Store or App Store or scan the QR code below.

It supports Android 7.0 or higher and iOS 11 or higher.



Google Play



App Store

16

In case rechargeable battery is included in this product, the entire device should be recycled in compliance with rechargeable battery recycling standards because of the internal battery. To dispose of properly, call (800) 822-8837 or visit www.call2recycle.org.

7. Conditions

-The warranty is valid only if the original receipt issued to the original purchaser by the dealer, specifying the date of purchase and serial number, is presented with the product to be repaired or replaced. LG Electronics reserves the right to refuse warranty service if this information has been removed or changed after the original purchase of the product from the dealer.

-If LG Electronics repairs or replaces the product, the repaired or replaced product shall be warranted for the remaining time of the original warranty period or for ninety (90) days from the date of repair, whichever is longer. Repair or replacement may involve the use of functionally equivalent reconditioned units. Replaced parts or components will become the property of LG Electronics.

-This warranty does not cover any failure of the product due to normal wear and tear, or due to misuse, including but not limited to use in other than the normal and customary manner, in accordance with instructions for use and maintenance of the product. Nor does this warranty cover any failure of the product due to accident, modification or adjustment, acts of God, or damage resulting from liquid.

-This warranty does not cover product failures due to improper repair installations, modifications, or service performed by a non-LG Electronics authorized person. Tampering with any of the seals on the product will void the warranty.

23

Troubleshooting

If you see any of the following symptoms while using the product, make sure to recheck it. It may not be a malfunction.

Symptom	Cause and Solution
The power does not turn on.	Check the battery level and charge it.
Cannot transfer calls to the headset.	If the smartphone does not support headset and hands-free functions, you cannot use the calling features. Check the battery level and charge it.
Cannot pair the headset with my smartphone.	Check if the headset is powered on. Check if the headset is running in discovery mode. - Slide the Power switch to ON while pressing the Call/Play button on the headset. The headset enters the discovery mode and the blue status indicator turns on.
The sound is low.	Briefly press the Volume button (⏮ or ⏭) of the headset to adjust the volume. Or you may adjust the volume from the paired device.

17

- THERE ARE NO EXPRESS WARRANTIES, WHETHER WRITTEN OR ORAL, OTHER THAN THIS PRINTED INCLUDING WITHOUT LIMITATION THE IMPLIED WARRANTIES OF MERCHANTABILITY OR FITNESS FOR A PARTICULAR PURPOSE, ARE LIMITED TO THE DURATION OF THIS LIMITED WARRANTY. IN NO EVENT SHALL LG ELECTRONICS OR ITS VENDORS BE LIABLE FOR INCIDENTAL OR CONSEQUENTIAL DAMAGES OF ANY NATURE WHATSOEVER, INCLUDING BUT NOT LIMITED TO LOST PROFITS OR COMMERCIAL LOSS, TO THE FULL EXTENT THOSE DAMAGES CAN BE DISCLAIMED BY LAW.

- Some countries/states do not allow the exclusion or limitation of incidental or consequential damages, or limitation of the duration of implied warranties, so the preceding limitations or exclusions may not apply to you. The warranty provided does not affect the consumer's statutory rights under applicable national legislation in force, nor the consumer's rights against the dealer arising from their sales/purchase contract.

Limited Warranty

Subject to the conditions of this Limited Warranty, LG Electronics warrants this product to be free from defects in design, material, and workmanship at the time of its original purchase by a consumer, and for a subsequent period of one (1) year. Should your product need warranty service, please return it to the dealer from whom it was purchased or contact your local LG Electronics contact center to get further information.

24

Specifications and Features

Item	Comments
<i>Bluetooth</i> Specifications	V 5.1 (Headset/Hands-Free/A2DP/AVRCP)
Battery	3.7 V / 210 mAh, Lithium-ion polymer
Music Play Time	Up to 22 hours*
Charging Time	Within 2 hours ※ When charging wired at room temperature
Rated Input Voltage	DC 5 V, 80 mA (TBD)
Operating Temperature	0°C (+32°F) ~ +40°C (+104°F)
Operating Humidity	5 % ~ 60 %
Dimensions (inch)/ Weight (oz)	6.15" (W) X 7.09" (L) X 0.59" (H) / 1.71 oz (TBD)
Frequency range	2402 MHz to 2480 MHz

*Duration of use may vary depending on the connected mobile device, features being used, settings, signal strength, operating temperature, frequency band, and other methods of use.

18

Important Safety Information

Avoiding hearing damage

Permanent hearing loss may occur if you use your headset at a high volume. Set the volume to a safe level. Over time you can become accustomed to a higher volume that may sound normal but can be damaging to your hearing. If you experience ringing in your ears or muffled speech, stop listening and have your hearing checked. The louder the volume, the less time that is required before your hearing could be affected. Hearing experts suggest that to protect your hearing:

- Limit the amount of time you use the headset at a high volume.
- Avoid turning up the volume to block out noisy surroundings.
- Turn the volume down if you can't hear people speaking near you.



Using headsets safely

Use of headsets to listen to music while operating a vehicle is not recommended and is illegal in some areas. Be careful and attentive while driving. Stop using this device if you find it disruptive or distracting while operating any type of vehicle or performing any other activity that requires your full attention.

25

Declaration of Confirmation

FCC NOTICE TO USERS:

This device complies with part 15 of the FCC Rules. Operation is subject to the following two conditions:

- (1) This device may not cause harmful interference, and
- (2) This device must accept any interference received, including interference that may cause undesired operation.

Changes or modifications not expressly approved by the manufacturer (or party responsible) for compliance could void the user's authority to operate the equipment.

FCC Part 15.105 statement

This equipment has been tested and found to comply with the limits for a Class B digital device, pursuant to Part 15 of the FCC Rules.

These limits are designed to provide reasonable protection against harmful interference in a residential installation. This equipment generates, uses and can radiate radio frequency energy and, if not installed and used in accordance with the instructions, may cause harmful interference to radio communications.

However, there is no guarantee that interference will not occur in a particular installation. If this equipment does cause harmful interference to radio or television reception, which can be determined by turning

19

OSS Notice Information

To obtain the source code under GPL, LGPL, MPL, and other open source licenses that have the obligations to disclose source code, that is contained in this product, and to access all referred license terms, copyright notices and other relevant documents please visit <https://opensource.lge.com>. LG Electronics will also provide open source code to you on CD-ROM for a charge covering the cost of performing such distribution (such as the cost of media, shipping, and handling) upon email request to opensource@lge.com. This offer is valid to anyone in receipt of this information for a period of three years after our last shipment of this product.

Symbols

~	Refers to alternating current (AC).
==	Refers to direct current (DC).
□	Refers to class II equipment.
⏻	Refers to stand-by.
I	Refers to "ON" (power).
⚡	Refers to dangerous voltage.

The output level shall automatically return to an output level not exceeding RS1 when the power is switched off.

26

the equipment off and on, the user is encouraged to try to correct the interference by one or more of the following measures:

- Reorient or relocate the receiving antenna.
- Increase the separation between the equipment and receiver.
- Connect the equipment into an outlet on a circuit different from that to which the receiver is connected.
- Consult the dealer or an experienced radio/TV technician for help.

IMPORTANT NOTE:

To comply with the FCC RF exposure compliance requirements, no change to the antenna or the device is permitted. Any change to the antenna or the device could result in the device exceeding the RF exposure requirements and void the user's authority to operate the device.

Bluetooth® is a registered trademark of Bluetooth SIG, Inc. worldwide.

Android, Google Play, the Google Play logo, and other related marks and logos are trademarks of Google LLC.

Supplier's Declaration of Conformity	
Trade Name	LG
Responsible Party	LG Electronics USA, Inc.
Address	111 Sylvan Avenue, North Building Englewood Cliffs, New Jersey 07632
Email	lg.environmental@lge.com



FCC ID: ZNFTONENP3

20

Notice

This device complies with Industry Canada license-exempt RSS standard(s). Operation is subject to the following two conditions:

- (1) this device may not cause interference, and
- (2) this device must accept any interference, including interference that may cause undesired operation of the device.

Le présent appareil est conforme aux CNR d'Industrie Canada applicables aux appareils radio exempts de licence. L'exploitation est autorisée aux deux conditions suivantes :

- (1) l'appareil ne doit pas produire de brouillage, etc.
- (2) l'utilisateur de l'appareil doit accepter tout brouillage radio électrique subi, même si le brouillage est susceptible d'en compromettre le fonctionnement.

"For Neck-Worn operation, this device has been and meets the FCC RF exposure guidelines. Similar accessories containing metallic components from others manufacturers included LG Electronics Inc. should not be used."



MIX
Paper from
responsible sources
FSC® C162722

21