



USER MANUAL

LG TONE Free

Bluetooth® LG Stereo Headset

NOTE: For the proper performance and to prevent any damage to, or misuse of the headset, please read all of the information carefully prior to using the headset.

Any modifications or changes to this manual due to typographical errors or inaccuracies of stated information shall only be made by LG Electronics Inc.



Google Play



App Store

TONE-FP8

www.lg.com

Copyright © 2021 LG Electronics Inc. All rights reserved

The LG TONE Free (TONE-FP8) is a lightweight wireless headset that uses Bluetooth technology.

This product can be used as an audio accessory for devices supporting either the A2DP or Hands-Free Bluetooth Profile.

Safety Precautions

The following safety precautions are provided to prevent any unexpected accident or damage. Please familiarize yourself with the safety precautions. The safety precautions are classified into "WARNING" and "CAUTION".

WARNING: Failing to comply with the instructions may result in serious injury or death.

CAUTION: Failing to comply with the instructions may result in minor injury or product damage.

WARNING

Do not drop the product from a high place. Make sure there is no water, alcohol, or benzene in contact with the product.

Do not store the product in a wet or dusty place.

Do not place heavy objects on the product.

This product is Splash proof to the IPX4 level protected against splashing of water. (The IPX4 Splash proof rating applies to the earbud product only.)

Do not put the product under the water or use it in a humid location such as a bathroom.

CAUTION

Choking Hazard: This product contains small parts that may present a choking hazard. Keep out of reach of children.

Do not disassemble, adjust, or repair the product arbitrarily.

Do not place the product near excessive heat or flammable material.

The product may be damaged if an incompatible charger is used.

Make sure that foreign objects do not enter the charger's connectors (charging port and power plug). Failure to do so may result in fire or electric shock.

If you have a medical device implanted, contact your doctor before using this device.

This product has a built-in battery, and the battery cannot be removed or replaced arbitrarily.

For your safety, do not remove the battery incorporated in the product. If you arbitrarily replace the battery or don't replace it correctly, it may explode.

The lithium-ion battery is a hazardous component that can cause injury.

Battery replacement by an unqualified professional can cause damage to your device.

Do not discard the battery arbitrarily. Follow the local procedure for discarding batteries.

Disposal of a battery into fire or a hot oven, or mechanically crushing or cutting of a battery, that can result in an explosion.

A battery subjected to extremely low air pressure that may result in an explosion or the leakage of flammable liquid or gas.

NOTE

If the product is exposed to excessive sweat, clean the product. Keep the earbuds clean.

HD Speaker

If the communication network of the device you are connecting to supports HD Voice Calling, you can enjoy making voice calls and listening to music in high definition.

Product Components



LG TONE Free™ Earbuds (medium eargels installed)
UV Charging Case



Extra Ear Gels (small & large)



USB Type C™ Charging Cable



User Manual



Warranty Card

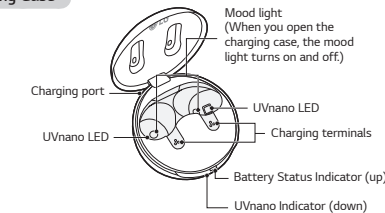
NOTE: Actual product design may differ from images shown in manual.

CAUTION

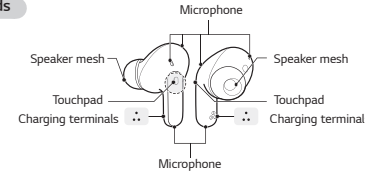
Make sure authentic LG Electronics components are used. Using a non-authentic component may damage the product and thus void the warranty. Use the USB Type C™ cable provided with the product.

Overview

Charging Case



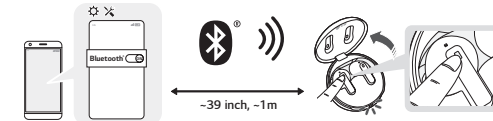
Earbuds



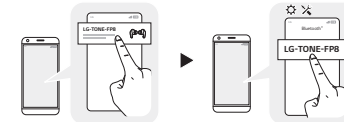
*The appearance and specifications of the actual product may differ depending on the model.

Pairing and Connecting

Fast Pair



- 1 Turn on the Bluetooth function on the mobile phone or the device to be connected.
- 2 Open the cover of the charging case with the earbuds mounted on the case. Press and hold the touchpad of the left or right earbud for 3 to 5 seconds until the battery status indicator blinks in blue.



3 When the Fast Pair connection pop-up appears on the top area of the mobile phone screen, tap it to connect. (It only supports Android™ 6.0 or higher, and requires configuring Bluetooth and location information settings of the mobile device.)

4 If the pop-up does not appear, select [LG TONE-FP8] from the Bluetooth menu on the mobile phone and connect it (for users of iOS or Android 5.0 or lower versions).

NOTE: To connect with another device, perform the above procedure again.

CAUTION: In the list of Bluetooth connected devices, LG TONE-FP8_LE is not the correct model name for connection. Check the model name in use and connect with the model name without "LE".

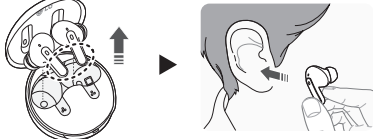
Automatic Reconnection

The earbuds are connected automatically when you open the cover of the charging case. If you close the cover of the charging case with both earbuds mounted in the charging case, the earbuds are disconnected.

Wearing Earbuds

- 1 Separate the earbuds from the charging case and adjust them so that they fit comfortably in your ears.

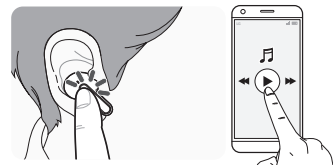
NOTE: You can use ear gels that fit your ears to improve Active Noise Canceling (ANC) performance and enjoy rich music sound.



- 2 When you wear the earbuds, you will hear a wearing detection alarm.



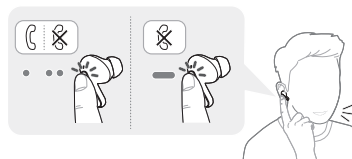
Playing Music



Function	Description
Play / Pause	: Touch the left or right earbud once.
Adjusting the Volume	: Touch the left(Decrease volume) or right(Increase volume) earbud twice.
Play Next	: Touch the left or right earbud three times.

NOTE: You can change the operation method of the function in the touchpad settings of the LG TONE Free app.

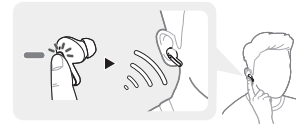
Mobile Calling Functions



Function	Status	Description
Answering Calls	Ringing	Touch the left or right earbud once.
Ending Calls	Talking	Touch the left or right earbud twice.
Making Calls	Idle	If you make a call using a mobile phone, the call is automatically connected to the headset.
Receiving Calls while on the Phone	Talking	If you touch the left or right earbud once, the current call will go on hold, and you will be able to answer an incoming call. If the previous call is on hold, you can finish the current call on the mobile phone. (It works differently depending on the mobile phone settings.)
Rejecting Calls	Ringing	Touch and hold the left or right earbud.

Listen to the Ambient Sound (LAS) / Active Noise Cancellation (ANC)

Listen to the Ambient Sound (LAS)



The Listen to the Ambient Sound (LAS) function allows you to listen to the ambient sound so that you can recognize the surrounding situation and any potential risks.

Active Noise Cancellation (ANC)



The Active Noise Cancellation (ANC) function blocks most ambient sounds. So, you can use the function to listen to music or watch a video with minimal noise interference.

Touch and hold the left or right earbud to switch between the ANC mode and the LAS mode.

You can set the LAS and ANC functions in the LG TONE Free app.

You can configure the Listen to the Ambient Sound mode and Conversation mode using the LG TONE Free app.

If you use the LAS or ANC function, the battery consumes faster, reducing the time you can use the product.

You can use the LAS and ANC functions while being idle, listening to music, or being on the phone.

NOTE: ANC is an acronym for Active Noise Cancellation.

CAUTION: When the LAS mode is enabled, you may hear the ambient sound become loud suddenly. When using the ANC function outdoors, pay attention to the surrounding environment for safety.

UVnano



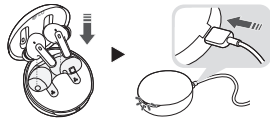
UVnano LED function only operates when the charging case is closed and connected to a power source using charging cable. UVnano LED does not operate while device is charging wirelessly such as on a pad or third party wireless charging device. - Independent testing shows the UVnano charging case kills 99.9% of the tested bacteria* on the speaker mesh of the earbuds after 10 minutes while charging.

*Testing conducted by independent test using preproduction ear buds charged for 1 hour prior. Ear buds were floated and diluted in pre-cultured Escherichia coli and Staphylococcus aureus for 5 minutes, and dried to room temp for 30 mins. UV irradiation was carried out over 5, 10, 15 and 20 mins, with both bacteria not detected after 10 mins. - For best result, it is recommended that the full 10 minutes of UVnano LED operation be performed while charging. NOTE: The UVnano indicator turns on blue while the UVnano LED is on. The light will slowly illuminate on and off until the UVnano LED function is complete (10 minutes). Once completed, the indicator light will switch back to the always-on battery indicator, see "Battery Status". Performance may vary based on usage conditions. A white product may slightly differ in the color of the UVnano LED contact area, but there is no problem with the product performance.

CAUTION: Be aware that the temperature of the earbuds may rise while the UVnano LED is operating. Avoid direct eye and skin exposure to UV light. Keep out of reach of children.

Charging

Wired Charging



When the charging cable is connected, the charging status is displayed in the charging case.

NOTE: The earbuds and the charging case are charged at the same time. The charging port on the charging case cannot be used to supply power to mobile phones, etc.

Wireless Charging



Align the bottom center of the charging case with the center of the wireless charger.

NOTE: The wireless charger is not provided. The wireless charging function may not work in some wireless chargers. Wireless charging feature charges at a slower rate due to less power being transmitted to the charging case. If you do wireless charging, the UVnano LED sterilizes the earbuds for 10 minutes before charging.

Checking the Battery Status

If earbuds are mounted in the charging case, the earbuds' battery status is displayed. Otherwise, the charging case's battery status is displayed. If the earbuds are mounted in the charging case while plugged in, the UVnano process will commence for ten minutes. Once this process is complete, the charging case's battery status will be displayed.



Battery Status Indicator	Remaining Battery (charger not connected)	Charging State (charger connected)
Red	20% or lower	Charging
Yellow	20% - 80%	-
Green	80% or higher	Fully charged

NOTE: When the charging case lid is closed, charging case battery status is displayed. If the charging case has no remaining charge, there will be no display and it cannot function. We recommend you keep the charging case charged at all times as the earbuds are not able to be turned on and turned off independently.

Battery Status Indicator

Status	Description
Bluetooth Search Mode	The battery status indicator flashes in blue.
Battery below 20%	The battery status indicator turns on and off in red.
Battery 20% - 80%	The battery status indicator turns on and off in yellow.
Battery 80% or more	The battery status indicator turns on and off in green.
When there is a problem while charging	The battery status indicator flashes in red.
Charging (charger connected)	The battery status indicator turns on in red.
Charging complete (charger connected)	The battery status indicator turns on in green.

Out of Range

If the device connected to the product is out of effective communication range, the communication signal becomes weak and the communication is lost. The effective communication range may vary depending on surrounding and other conditions.

If the device comes back within effective communication range, the product automatically reconnects to the device. If the device is not automatically reconnected, **touch the left or right earbud** once to connect them.

LG TONE Free App

If you install the "LG TONE Free" app, you can use Check Earbud Battery, Voice Alert, Change Equalizer Mode, Check Last Connected Location Information, and Find My Earbuds functions. Check out the app for more details.

To install the "LG TONE Free" app, search LG TONE Free in the Google Play Store or App Store or scan the QR code below.

It supports Android 6.0 or higher and iOS 11 or higher.



Google Play



App Store

Troubleshooting

If you see any of the following symptoms while using the product, make sure to recheck it. It may not be a malfunction.

Symptom	Cause and Solution
The power does not turn on	Check the battery level and charge it.
If unable to make a call with earbuds	If the mobile phone does not support headset and hands-free functions, you cannot use the calling features. Check the battery level and charge it.

If unable to register earbuds to mobile phone	Check whether earbuds are turned on. Check if the charging case of earbuds are in search mode. - Press the pairing button on the charging case to switch to search mode.
If you replaced the earbuds or there is a problem with the operation	Insert the earbuds into the charging case and, with the charging case open, press and hold the touchpad of the left or right earbud for 10 seconds or more. - The factory reset proceeds while the battery status indicator on the charging case flashes red. Please reconnect the device after factory reset.

Specifications and Features

Item	Comments
Bluetooth Specifications	V 5.2 (Headset/Hands-Free/A2DP/AVRCP)
Battery	Earbud : 3.7 V / 55 mAh, Lithium-ion Charging case : 3.7 V / 390 mAh, Lithium-ion
Music Play Time Earbuds & With Charging case (ANC ON)	Up to 10 hours (Up to 8 hours)*

Charging Time	Earbud : within an hour / Charging case : within 2 hours Fast Charging : 5 min charge for up to 60 min playtime ※ When charging wired at room temperature
Rated Input Voltage	Earbud : DC 5 V, 136 mA Charging case : DC 5 V, 500 mA
Operating Temperature	0°C (+32°F) ~ +40°C (+104°F)
Dimensions (inch)	Earbud : 0.83" (W) X 1.11" (L) X 0.91" (H) Charging case : 2.15" (W) X 2.15" (L) X 1.18" (H)
Weight (oz)	Earbud : 0.19 oz (One earbud) Charging case : 1.38 oz
Frequency range	2402 MHz to 2480 MHz

*Duration of use may vary depending on the connected mobile device, features being used, settings, signal strength, operating temperature, frequency band, and other methods of use.
Fast charging feature does not apply when charging case is placed on wireless charging device such as a pad.
Wireless charging feature charges at a slower rate due to less power being transmitted to the charging case.

Declaration of Confirmation

FCC NOTICE TO USERS:

This device complies with part 15 of the FCC Rules.

Operation is subject to the following two conditions:

- (1) This device may not cause harmful interference, and
- (2) This device must accept any interference received, including interference that may cause undesired operation.

Changes or modifications not expressly approved by the manufacturer (or party responsible) for compliance could void the user's authority to operate the equipment.

FCC Part 15.105 statement

This equipment has been tested and found to comply with the limits for a Class B digital device, pursuant to Part 15 of the FCC Rules.

These limits are designed to provide reasonable protection against harmful interference in a residential installation. This equipment generates, uses and can radiate radio frequency energy and, if not installed and used in accordance with the instructions, may cause harmful interference to radio communications.

However, there is no guarantee that interference will not occur in a particular installation.

If this equipment does cause harmful interference to radio or television reception, which can be determined by turning the equipment off and on, the user is encouraged to try to correct the interference by one or more of the following measures:

- Reorient or relocate the receiving antenna.
- Increase the separation between the equipment and receiver.

- Connect the equipment into an outlet on a circuit different from that to which the receiver is connected.
- Consult the dealer or an experienced radio/TV technician for help.

IMPORTANT NOTE:

To comply with the FCC RF exposure compliance requirements, no change to the antenna or the device is permitted. Any change to the antenna or the device could result in the device exceeding the RF exposure requirements and void the user's authority to operate the device.

Bluetooth® is a registered trademark of Bluetooth SIG, Inc. worldwide.

Android, Google Play, the Google Play logo, and other related marks and logos are trademarks of Google LLC.

Supplier's Declaration of Conformity	
Trade Name	LG
Responsible Party	LG Electronics USA, Inc.
Address	111 Sylvan Avenue, North Building Englewood Cliffs, New Jersey 07632
Email	lg.environmental@lge.com



FCC ID: ZNFTONEFP8

Additional Information

1. Radio frequency exposure

This Bluetooth LG Stereo Headset is a radio transmitter and receiver. When in operation, it communicates with a Bluetooth-equipped mobile device by receiving and transmitting radio frequency (RF) electromagnetic fields (microwaves) in the frequency range 2402 to 2480 MHz. Your Bluetooth headset is designed to operate in compliance with the RF exposure guidelines and limits set by national

authorities and international health agencies when used with any compatible LG Electronics mobile phone.

2. Bluetooth connection precautions

The following environments affect the range and reception of Bluetooth signals:

- When walls, metal, human bodies, or other obstacles exist between the Bluetooth device and the connected device.
- When equipment that uses 2.4 GHz frequency signals (wireless LANs, wireless phones, microwave ovens, etc.) is placed near the devices being used.

-When using a Bluetooth device (TV, laptop, etc.) other than the mobile phone, the sound quality may be affected by the specifications and performance of the device.

3. Potentially explosive atmosphere

Turn off your electronic device when in any area with a potentially explosive atmosphere. Although this is uncommon, your electronic device could generate sparks. Sparks in such areas could cause an explosion or fire resulting in bodily injury or even death. Areas with a potentially explosive atmosphere are often but not always clearly marked.

4. Emergency calls

IMPORTANT!

This Bluetooth headset and the electronic device connected to the headset operate using radio signals and mobile and landline networks as well as user-programmed functions, which cannot guarantee connection under all conditions. Therefore, you should never rely solely upon any electronic device for essential communications (e.g., medical emergencies). Remember,

in order to make or receive calls, the headset and the electronic device connected to the headset must be switched on and in a service area with adequate mobile signal strength. Emergency calls may not be possible on all mobile phone networks or when certain network services and/or phone features are in use. Check with your local service provider.

5. Battery information

A rechargeable battery has a long service life if treated properly. A new battery or one that has not been used for a long period of time could have reduced capacity the first few times it is used. Do not expose the battery to extreme temperatures, never above +50°C (+122°F) or below -10°C (+14°F). For maximum battery capacity, use the battery at room temperature. If the battery is used in low temperatures, the battery capacity will be reduced. The battery can only be charged in temperatures between 0°C (+32°F) and +45°C (+113°F).

6. Recycling the battery in your Bluetooth headset

The battery in your Bluetooth headset must be disposed of properly and should never be placed in municipal waste. The LG Electronics service partner that removes the battery will dispose of it according to local regulations.

In case rechargeable battery is included in this product, the entire device should be recycled in compliance with rechargeable battery recycling standards because of the internal battery. To dispose of properly, call (800) 822-8837 or visit www.call2recycle.org.

7. Conditions

-The warranty is valid only if the original receipt issued to the original purchaser by the dealer, specifying the date of purchase and serial number, is presented with the product to be repaired or replaced. LG Electronics reserves the right to refuse warranty service if this information has been

removed or changed after the original purchase of the product from the dealer.

-If LG Electronics repairs or replaces the product, the repaired or replaced product shall be warranted for the remaining time of the original warranty period or for ninety (90) days from the date of repair, whichever is longer. Repair or replacement may involve the use of functionally equivalent reconditioned units. Replaced parts or components will become the property of LG Electronics.

-This warranty does not cover any failure of the product due to normal wear and tear, or due to misuse, including but not limited to use in other than the normal and customary manner, in accordance with instructions for use and maintenance of the product. Nor does this warranty cover any failure of the product due to accident, modification or adjustment, acts of God, or damage resulting from liquid.

-This warranty does not cover product failures due to improper repair installations, modifications, or service performed by a non-LG Electronics authorized person. Tampering with any of the seals on the product will void the warranty.

-THERE ARE NO EXPRESS WARRANTIES, WHETHER WRITTEN OR ORAL, OTHER THAN THIS PRINTED INCLUDING WITHOUT LIMITATION THE IMPLIED WARRANTIES OF MERCHANTABILITY OR FITNESS FOR A PARTICULAR PURPOSE, ARE LIMITED TO THE DURATION OF THIS LIMITED WARRANTY. IN NO EVENT SHALL LG ELECTRONICS OR ITS VENDORS BE LIABLE FOR INCIDENTAL OR CONSEQUENTIAL DAMAGES OF ANY NATURE WHATSOEVER, INCLUDING BUT NOT LIMITED TO LOST PROFITS OR COMMERCIAL LOSS, TO THE FULL EXTENT THOSE DAMAGES CAN BE DISCLAIMED BY LAW.

-Some countries/states do not allow the exclusion or limitation of incidental or consequential damages, or limitation of the duration of

implied warranties, so the preceding limitations or exclusions may not apply to you. The warranty provided does not affect the consumer's statutory rights under applicable national legislation in force, nor the consumer's rights against the dealer arising from their sales/purchase contract.

Limited Warranty

Subject to the conditions of this Limited Warranty, LG Electronics warrants this product to be free from defects in design, material, and workmanship at the time of its original purchase by a consumer, and for a subsequent period of one (1) year. Should your product need warranty service, please return it to the dealer from whom it was purchased or contact your local LG Electronics contact center to get further information.

Important Safety Information

Avoiding hearing damage

Permanent hearing loss may occur if you use your headset at a high volume. Set the volume to a safe level. Over time you can become accustomed to a higher volume that may sound normal but can be damaging to your hearing. If you experience ringing in your ears or muffled speech, stop listening and have your hearing checked. The louder the volume, the less time that is required before your hearing could be affected. Hearing experts suggest that to protect your hearing:

-Some countries/states do not allow the exclusion or limitation of

- Limit the amount of time you use the headset at a high volume.

- Avoid turning up the volume to block out noisy surroundings.
- Turn the volume down if you can't hear people speaking near you.



Using headsets safely

Use of headsets to listen to music while operating a vehicle is not recommended and is illegal in some areas. Be careful and attentive while driving. Stop using this device if you find it disruptive or distracting while operating any type of vehicle or performing any other activity that requires your full attention.

OSS Notice Information

To obtain the source code under GPL, LGPL, MPL, and other open source licenses, that is contained in this product, please visit <http://opensource.lge.com>. In addition to the source code, all referred license terms, warranty disclaimers and copyright notices are available for download. LG Electronics will also provide open source code to you on CD-ROM for a charge covering the cost of performing such distribution (such as the cost of media, shipping, and handling) upon email request to opensource@lge.com. This offer is valid for a period of three years after our last shipment of this product. This offer is valid to anyone in receipt of this information.

This device was tested in compliance with FCC RF Exposure limit. (0 mm distance from human head/body (limit 1.6 W/kg @ 1g SAR) and extremity (limit 4.0 W/kg @ 10g SAR)).

This Device contains licence-exempt transmitter(s)/receiver(s) that comply with Innovation, Science and Economic Development Canada's licence-exempt RSS(s). Operation is subject to the following two conditions:

- (1) This device may not cause interference.
- (2) This device must accept any interference, including interference that may cause undesired operation of the device.