

SAR Test Setup Photographs

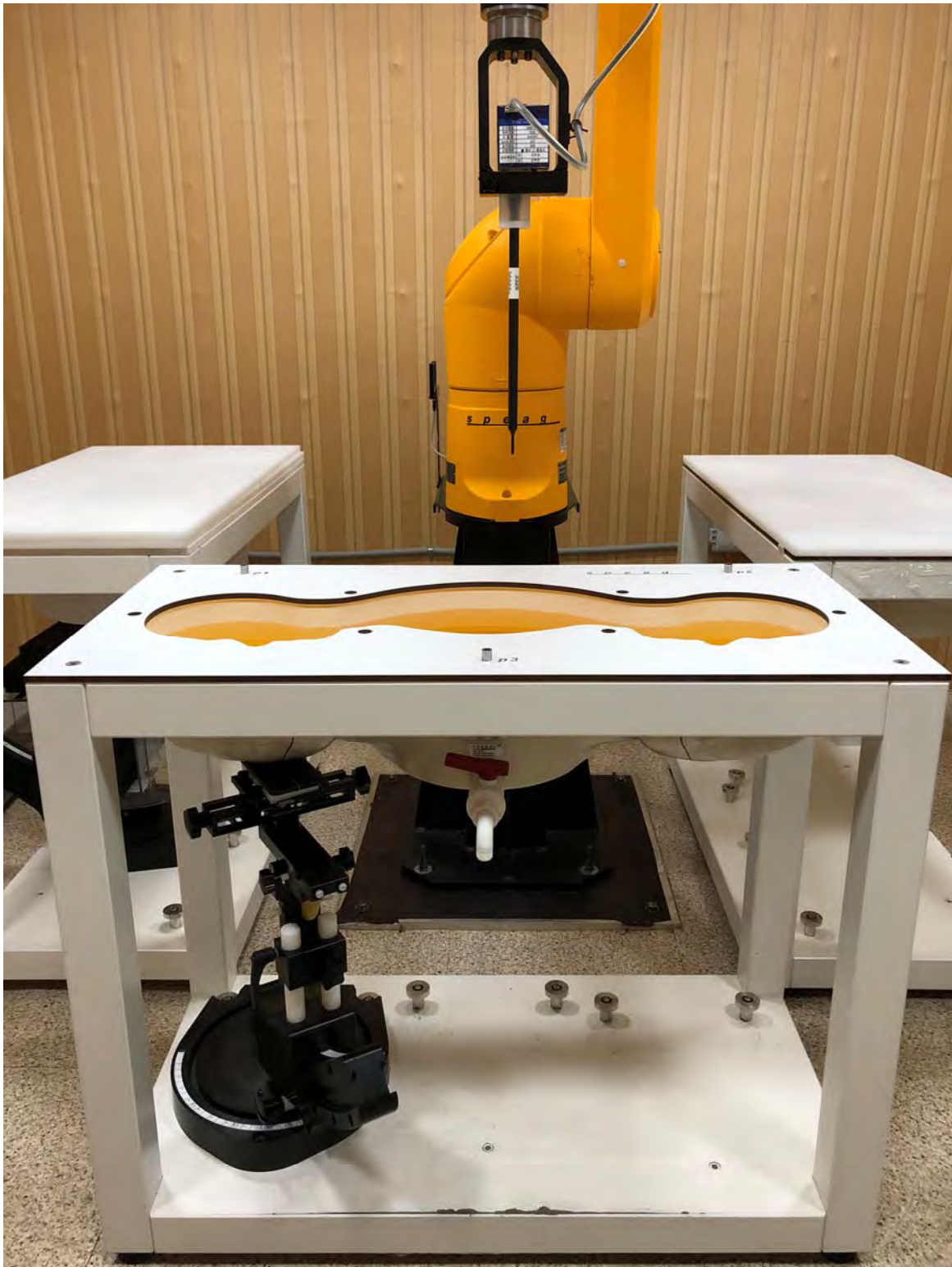
- Head SAR Test Photo
- Body SAR Test Photo
- Phablet SAR Test Photo
- Proximity Sensor SAR Test Photo

■ Test Setup Photo (Liquid depth)

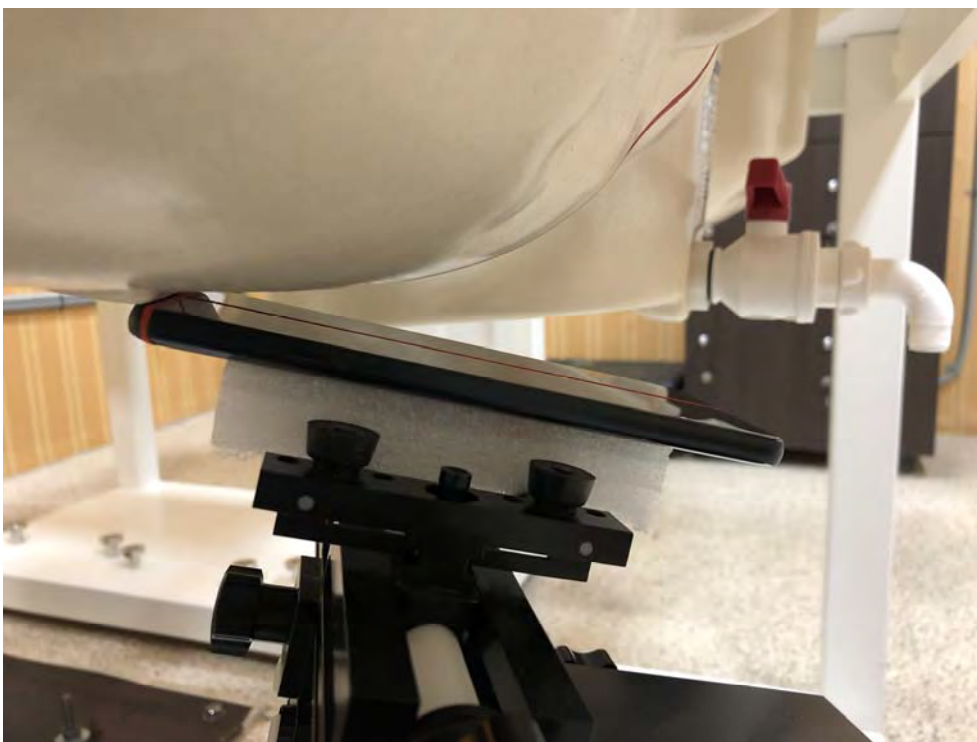


Note: The liquid depth is maintained at a minimum depth of 15 cm to minimize reflections from the upper surface.

■ Test Setup Photo (Head SAR Test Photo)



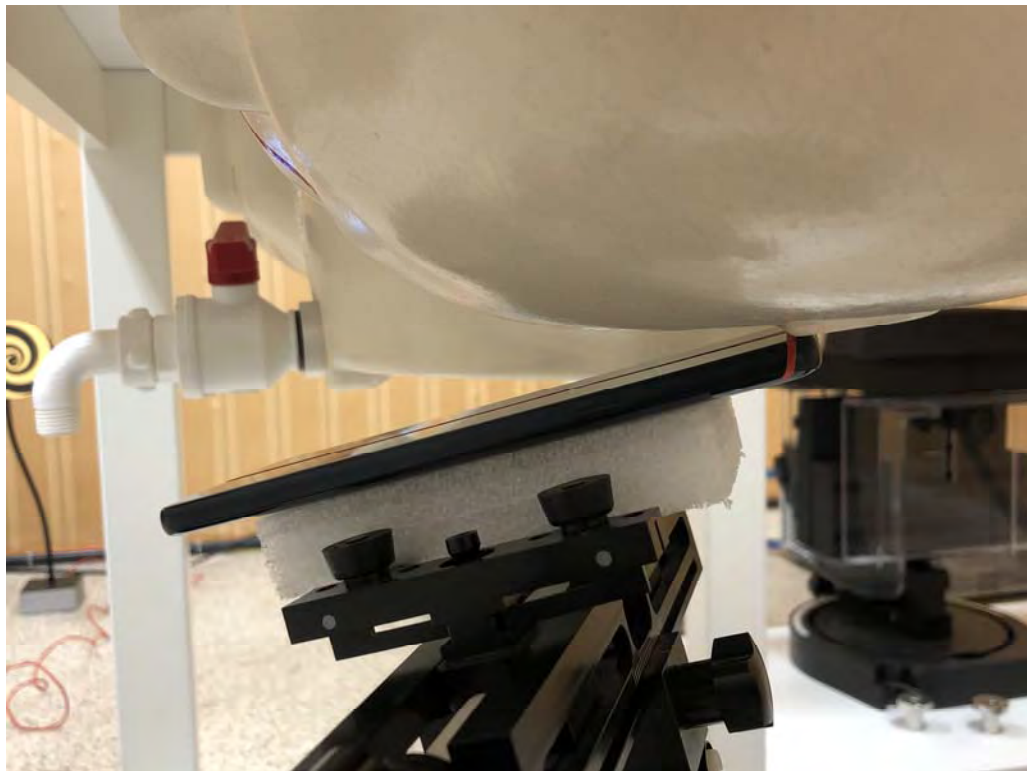
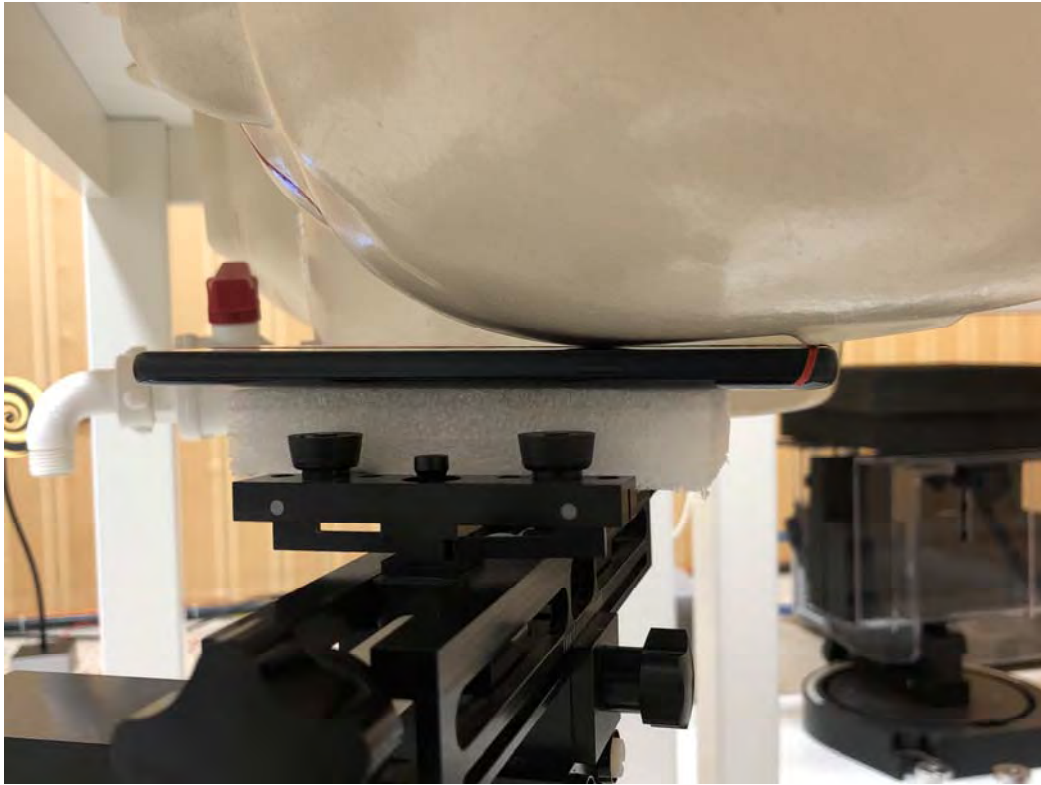
■ Test Setup Photo



■ Test Setup Photo (Head SAR Test Photo)



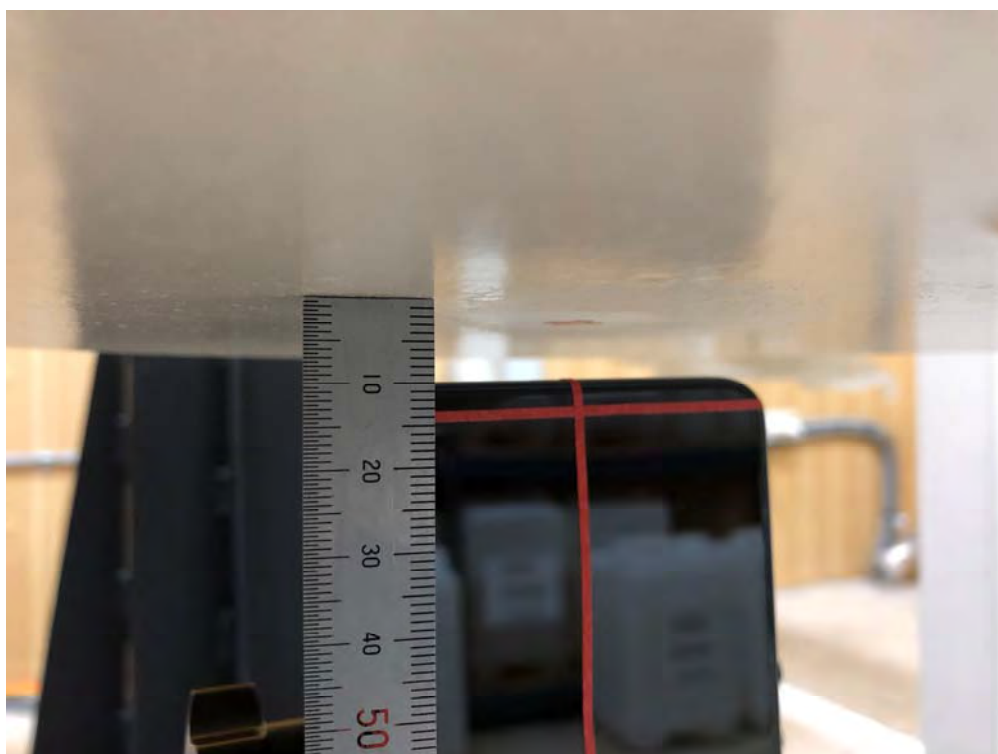
■ Test Setup Photo



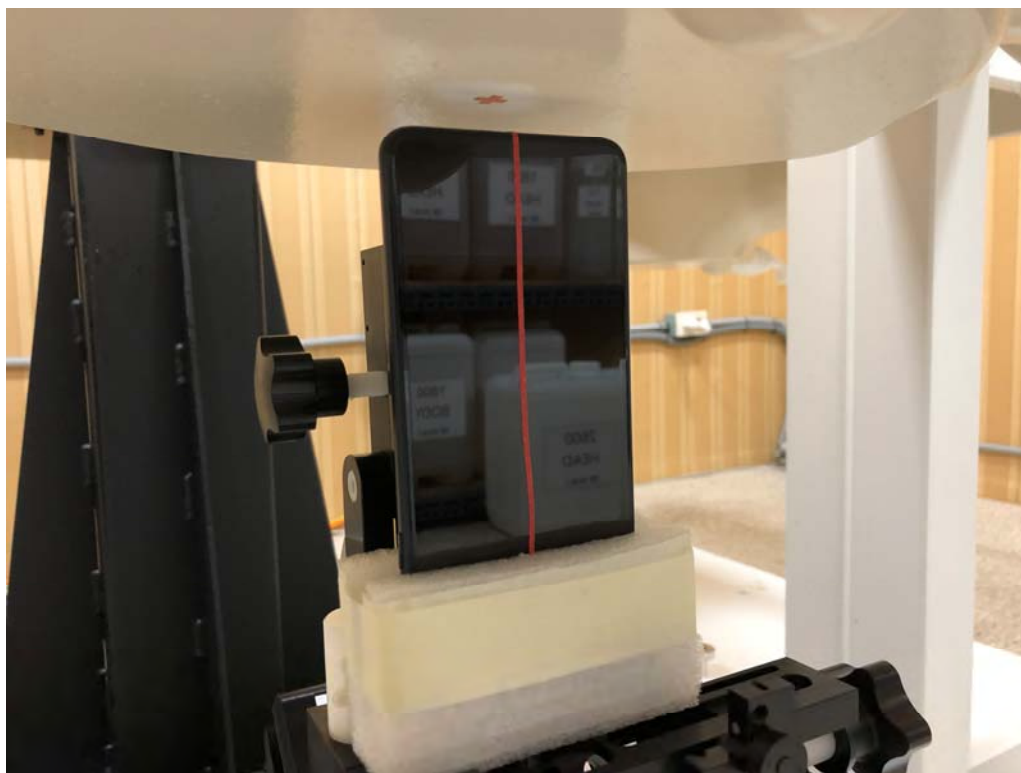
■ Test Setup Photo (Body SAR Test Photo)



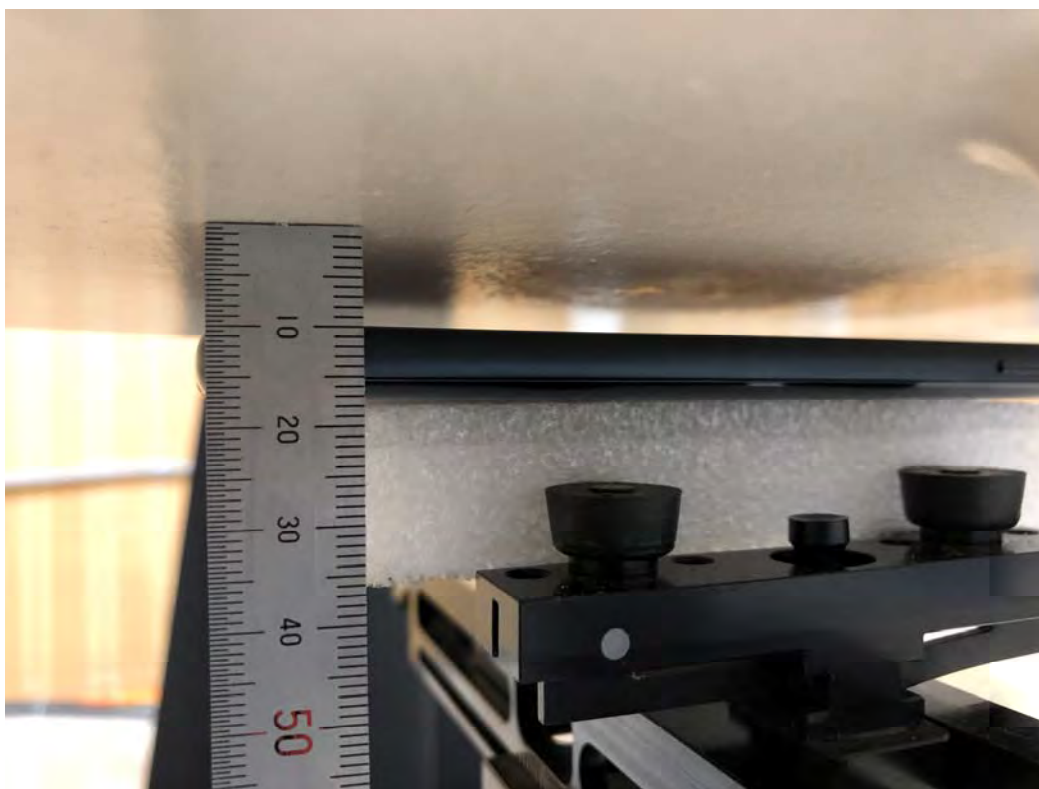
■ Test Setup Photo (Top)



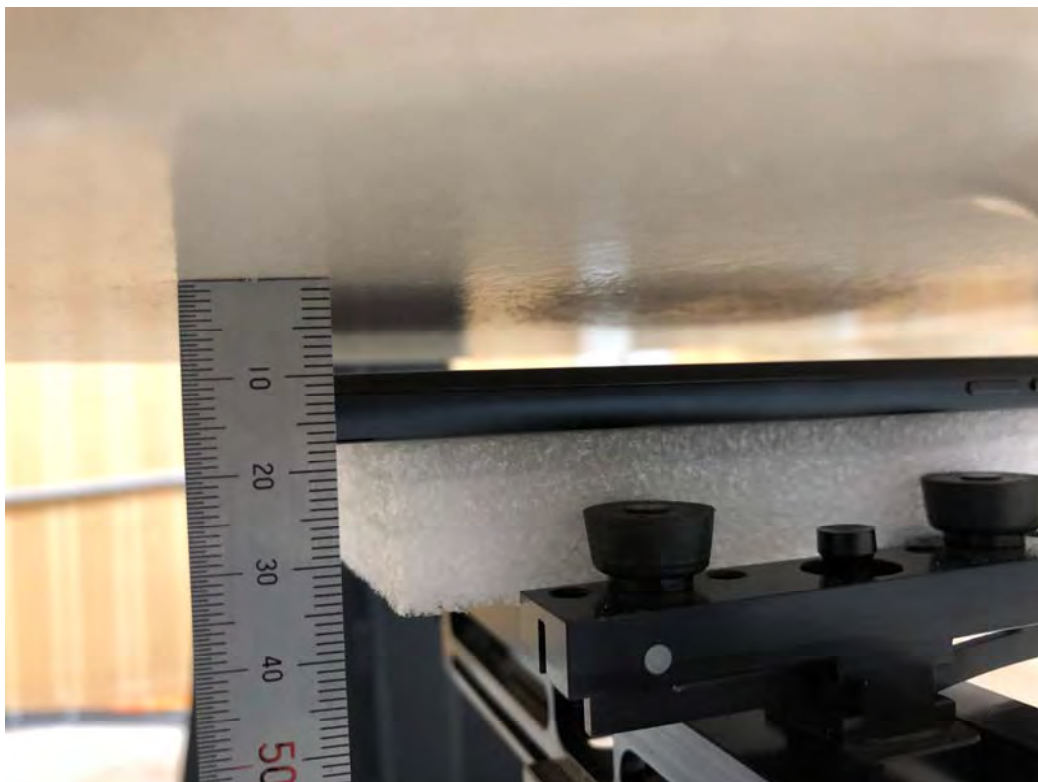
■ Test Setup Photo (Bottom)



■ Test Setup Photo (Front)



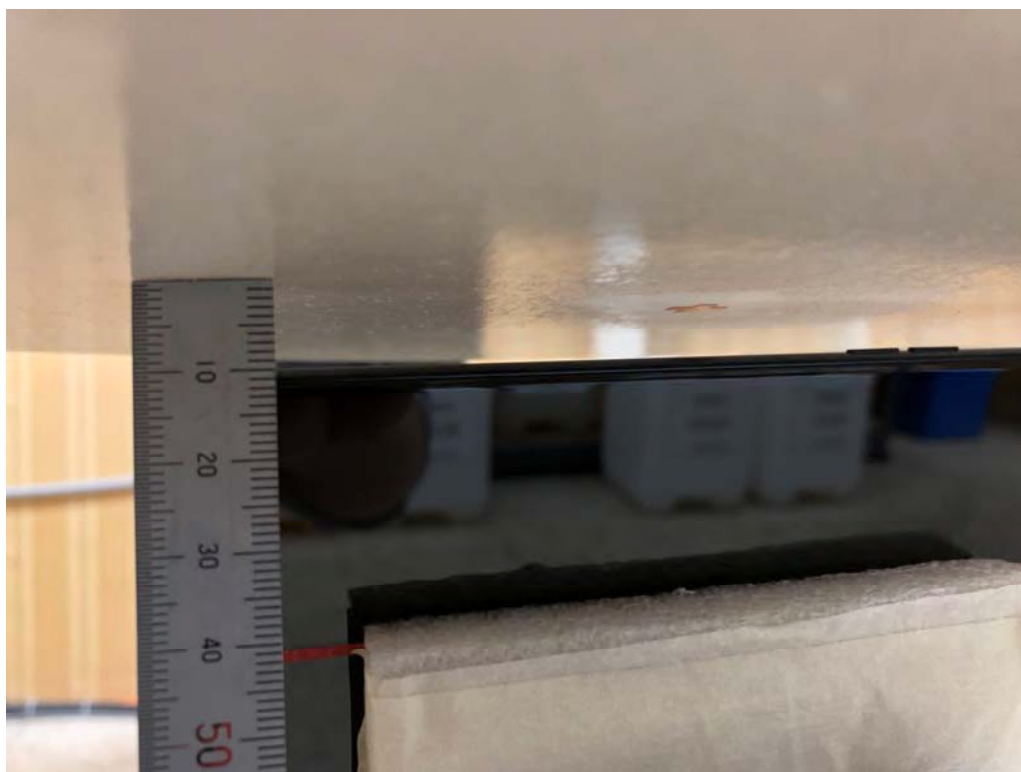
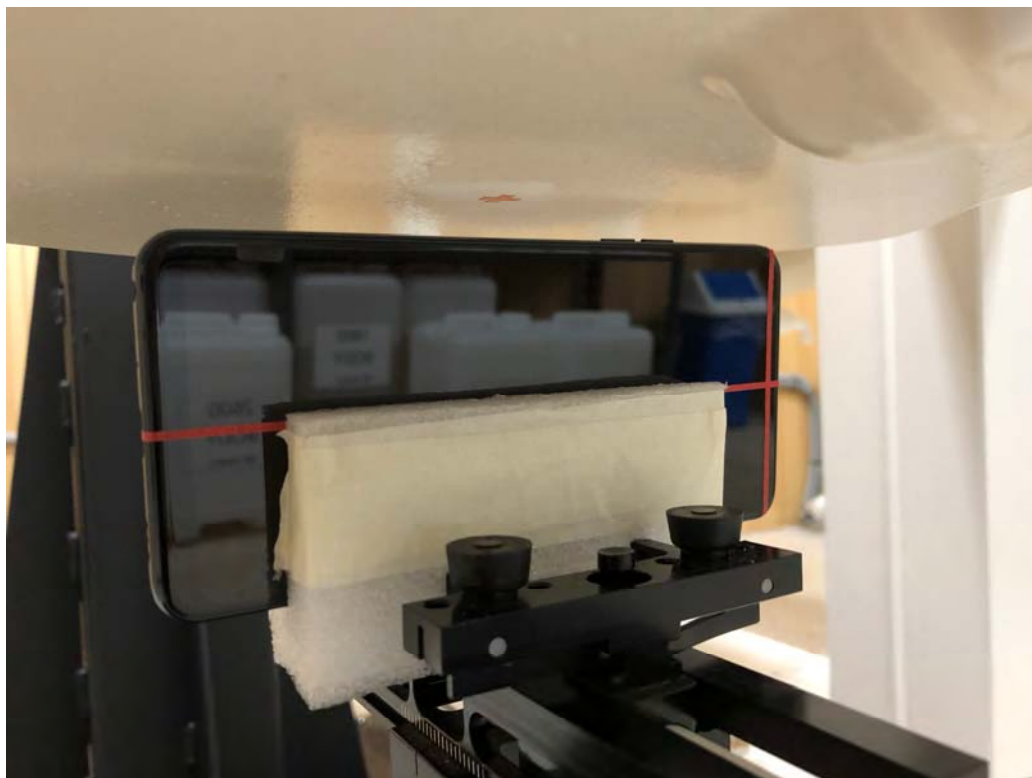
■ Test Setup Photo (Rear)



■ Test Setup Photo (Right)



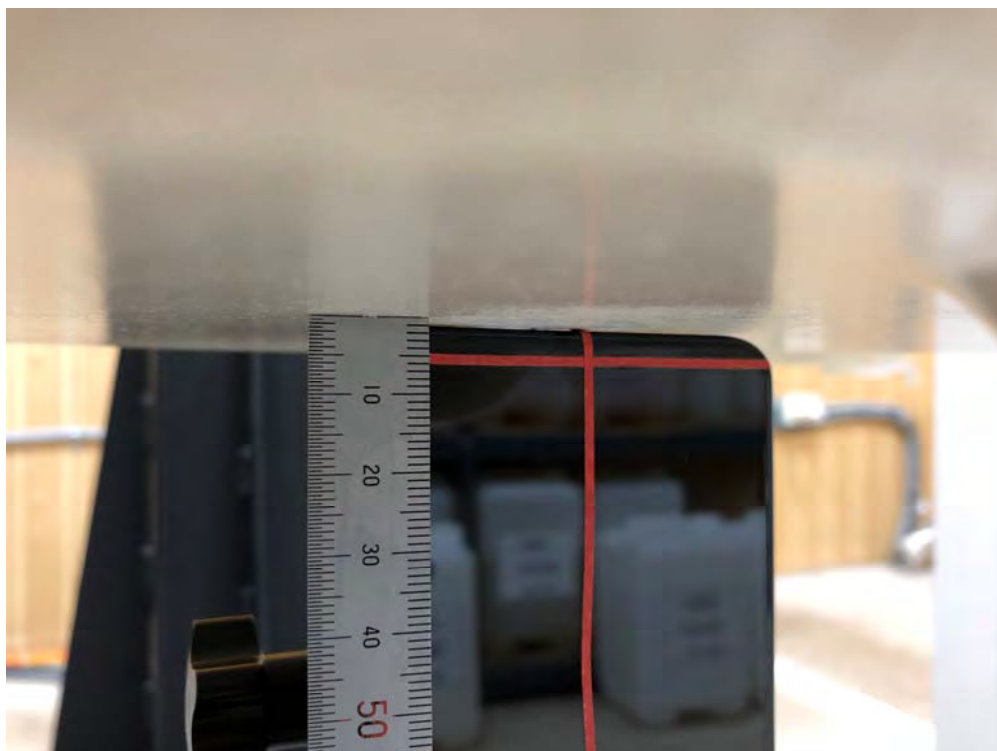
■ Test Setup Photo (Left)



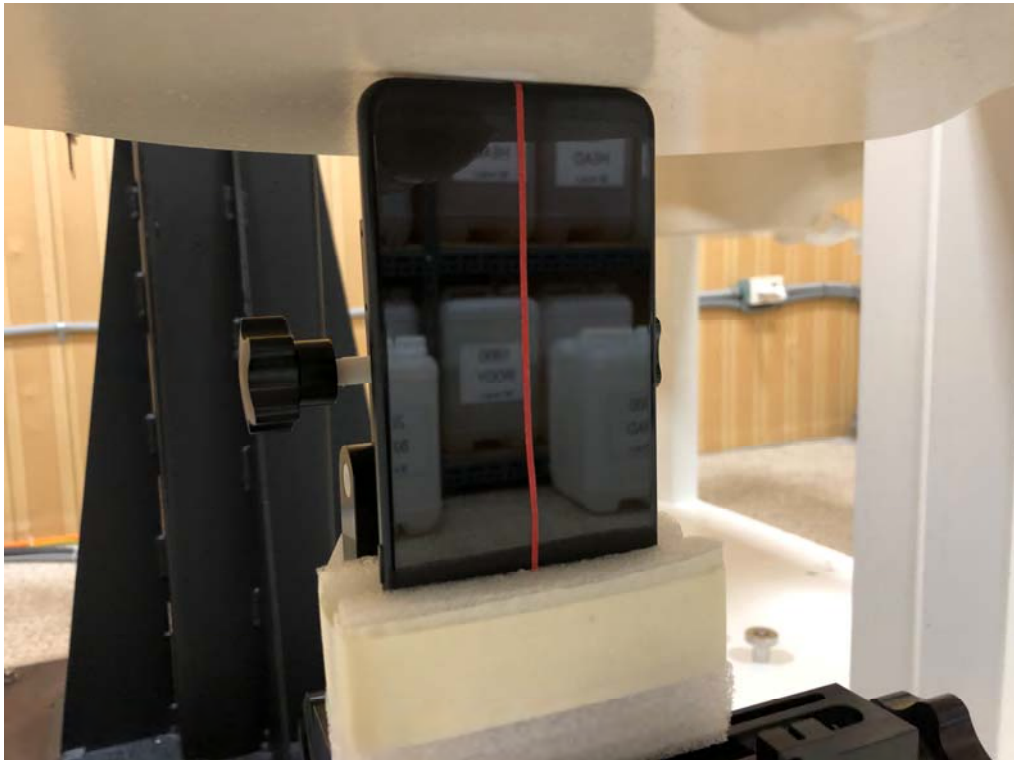
■ Test Setup Photo (Phablet SAR Test Photo)



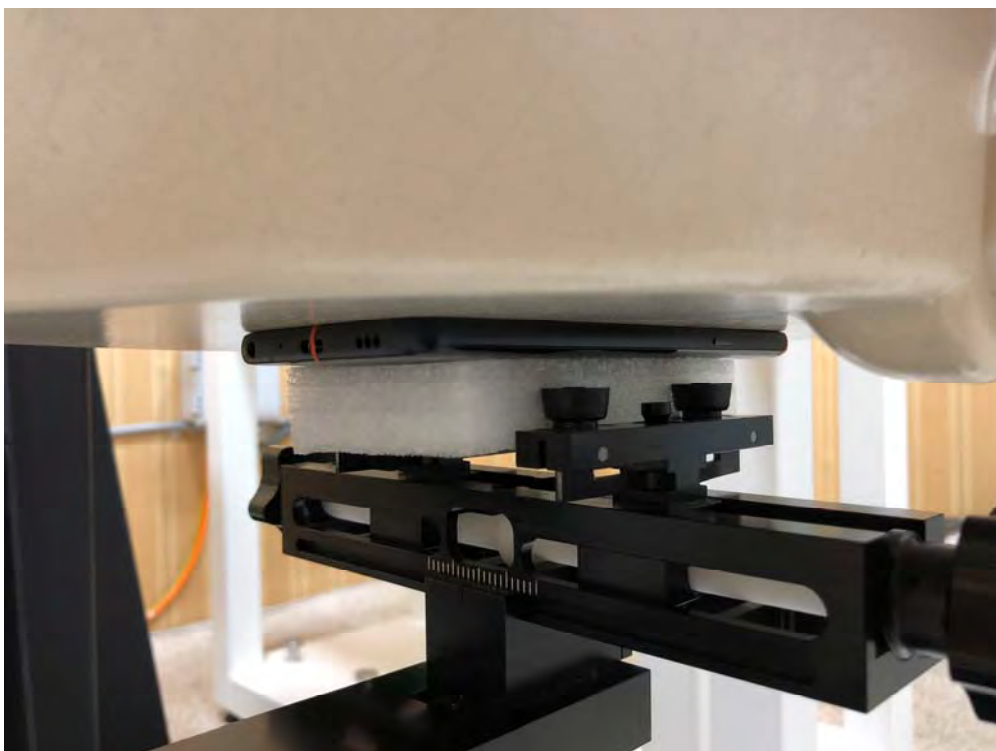
■ Test Setup Photo (Top)



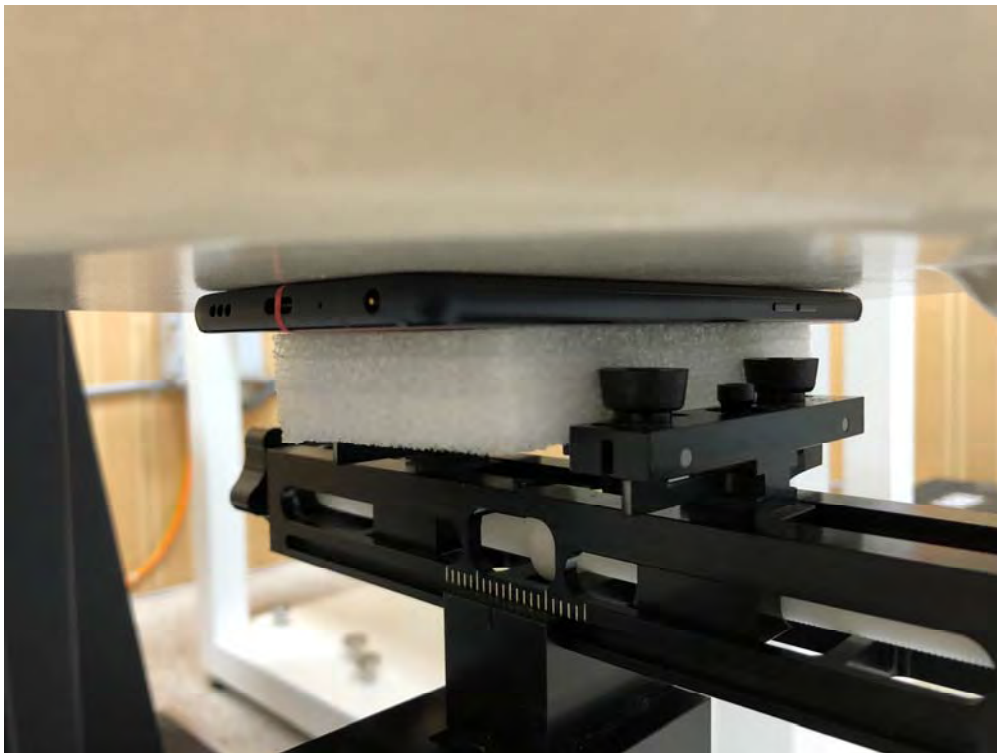
■ Test Setup Photo (Bottom)



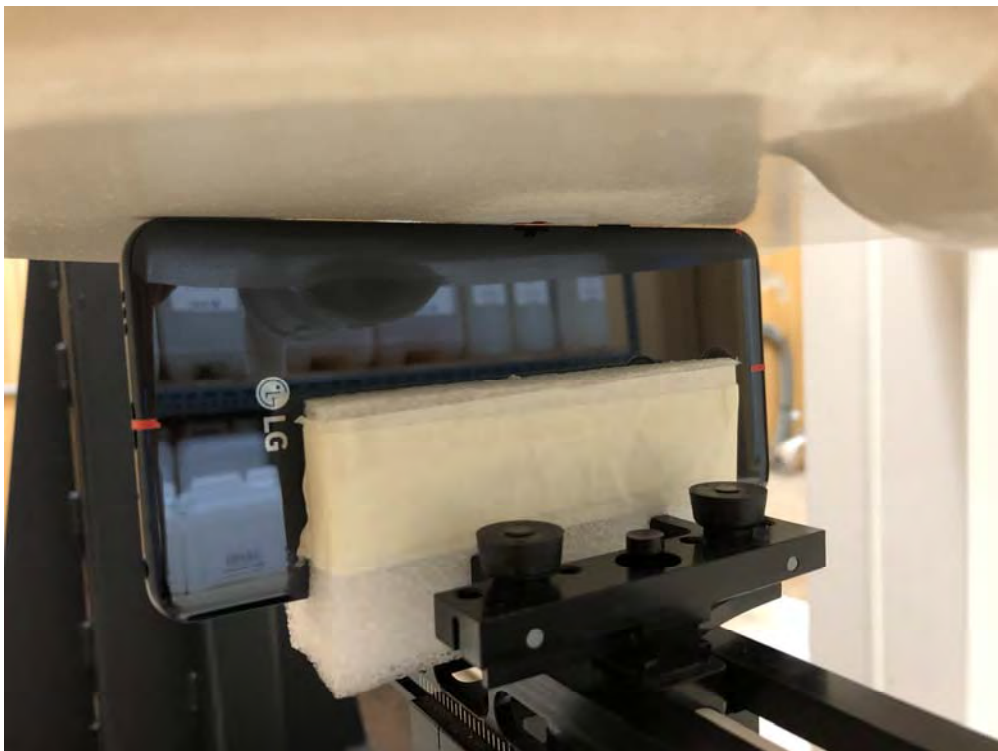
■ Test Setup Photo (Front)



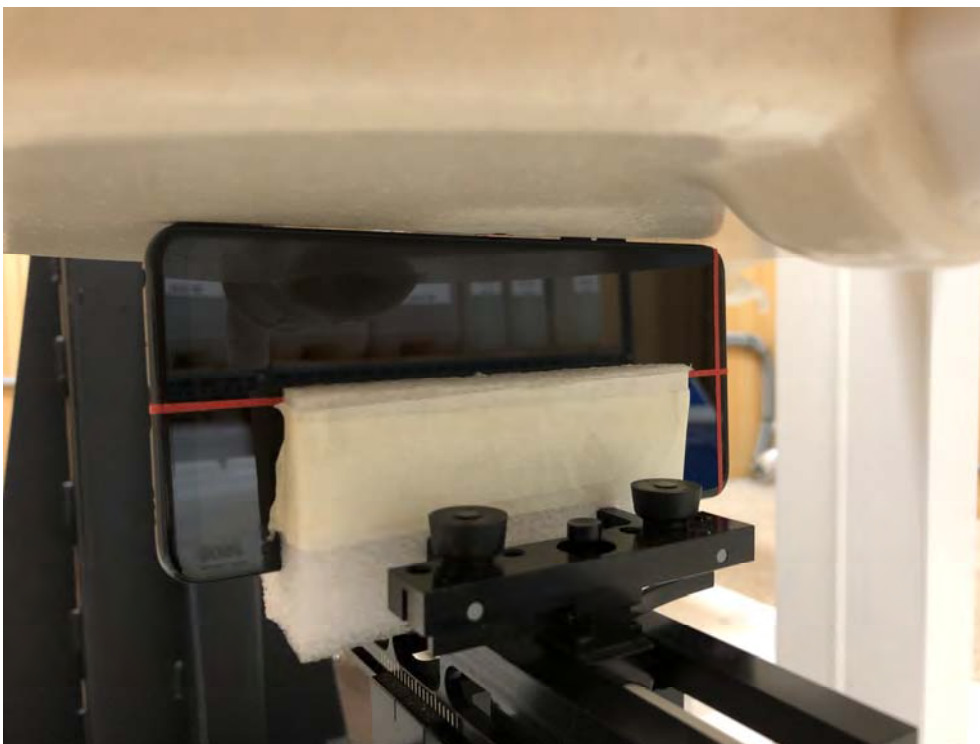
■ Test Setup Photo (Rear)



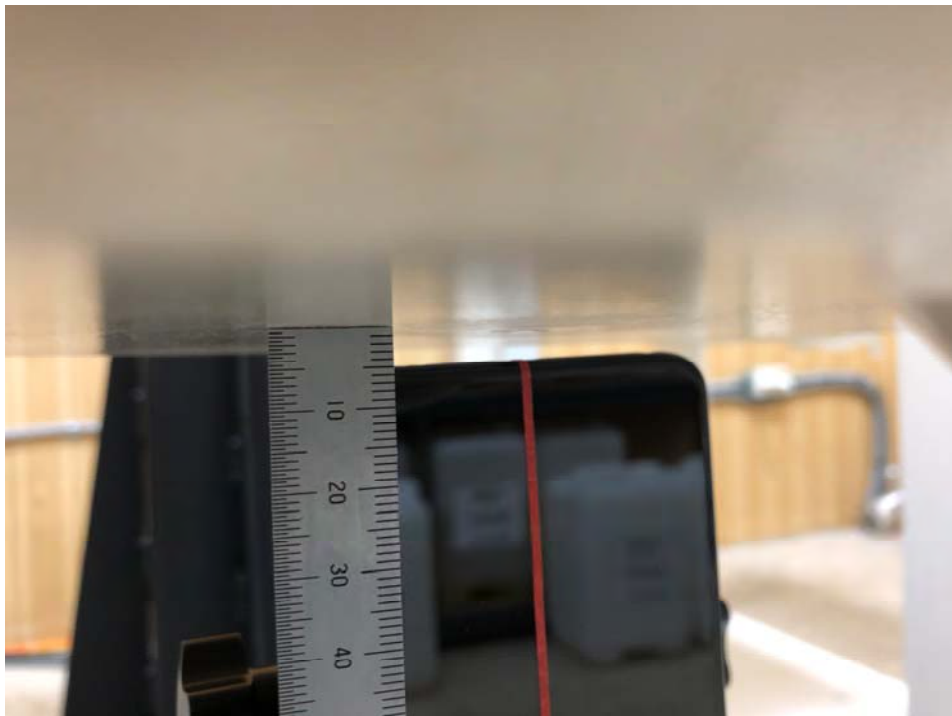
■ Test Setup Photo (Right)



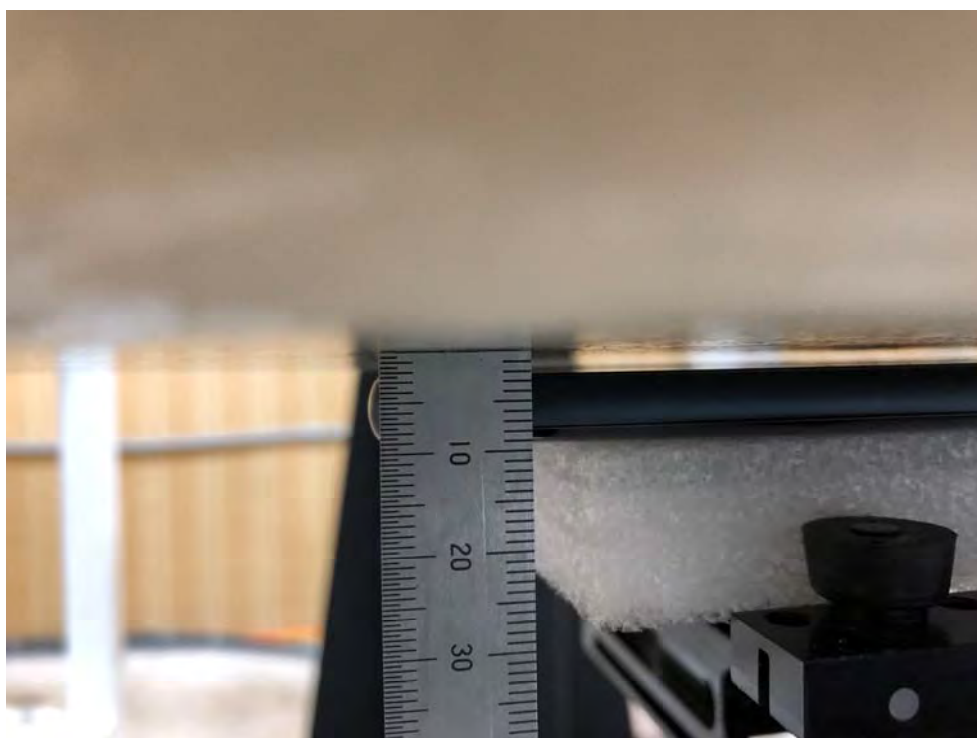
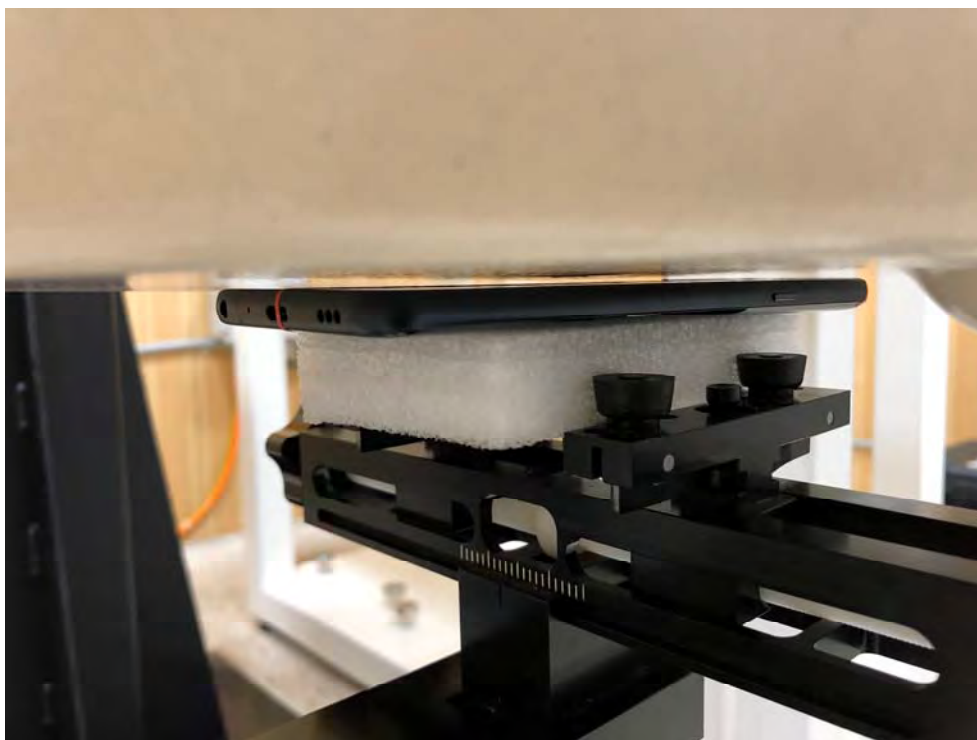
■ Test Setup Photo (Left)



■ Test Setup Photo (Proximity Sensor Bottom: 5 mm)



■ Test Setup Photo (Proximity Sensor Front: 2 mm)



■ Test Setup Photo (Proximity Sensor Rear: 3 mm)

