

SAR Plots

- Verification Plots
- SAR Test Plots

DT&C Co., Ltd.

DUT: Dipole 835 MHz; Type: D835V2; Serial: D835V2 - SN:464

Communication System: UID 0, CW (0); Frequency: 835 MHz; Duty Cycle: 1:1
Medium parameters used: $f = 835$ MHz; $\sigma = 0.886$ S/m; $\epsilon_r = 41.935$; $\rho = 1000$ kg/m³
Phantom section: Flat Section

DASY5 Configuration:

Probe: EX3DV4 - SN7337; ConvF(10.27, 10.27, 10.27); Calibrated: 11/28/2017; Electronics: DAE4 Sn1392
Sensor-Surface: 2mm (Mechanical Surface Detection)
Phantom: SAM with CRP v5.0; Type: QD000P40CD; Serial: TP:1837
Measurement SW: DASY52, Version 52.8 (8); SEMCAD X Version 14.6.10 (7331)

Test Date: 2018-03-19; Ambient Temp: 21.1; Tissue Temp: 21.5

835 MHz System Head Verification

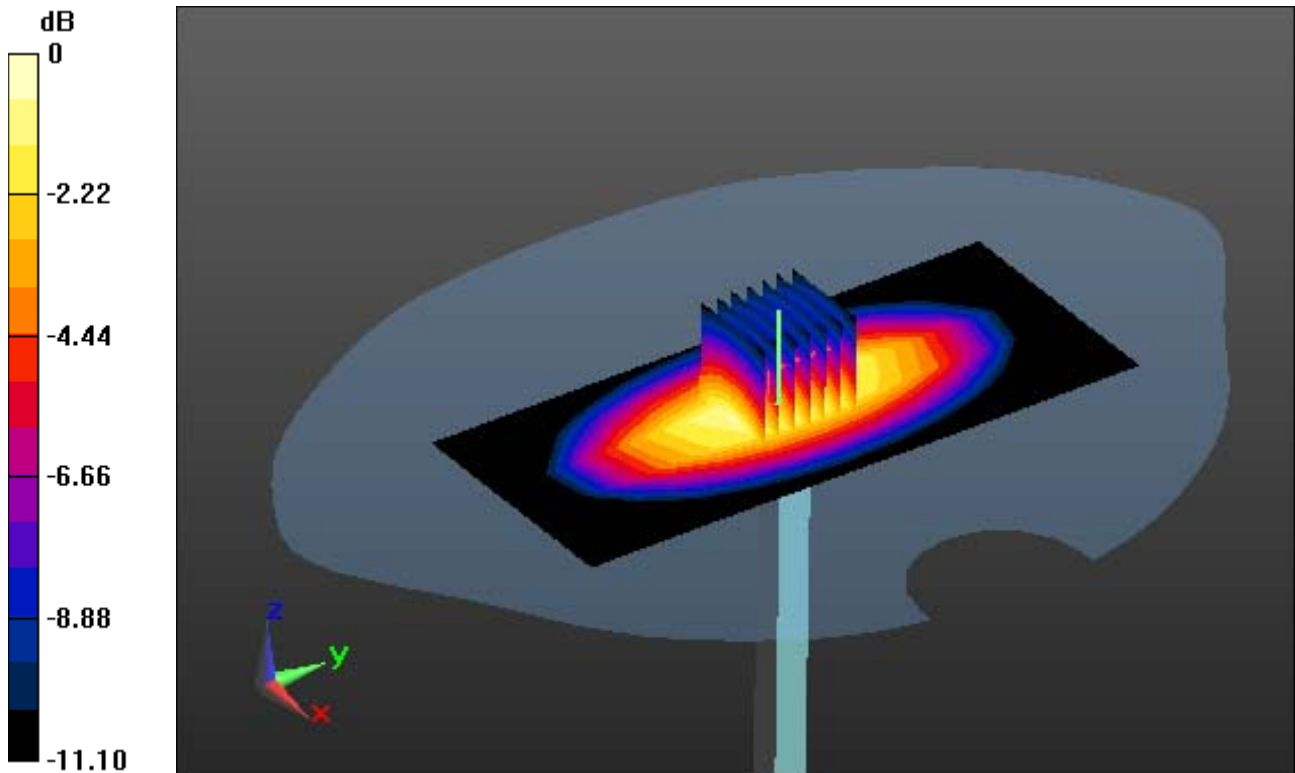
Area Scan (6x13x1): Measurement grid: dx=15mm, dy=15mm

Zoom Scan (7x7x7)/Cube 0: Measurement grid: dx=5mm, dy=5mm, dz=5mm

Power Drift = 0.10 dB

Peak SAR (extrapolated) = 2.75 W/kg

SAR(1 g) = 2.28 W/kg; SAR(10 g) = 1.51 W/kg



0 dB = 2.32 W/kg

DT&C Co., Ltd.

DUT: Dipole 835 MHz; Type: D835V2; Serial: D835V2 - SN:464

Communication System: UID 0, CW (0); Frequency: 835 MHz; Duty Cycle: 1:1
Medium parameters used: $f = 835$ MHz; $\sigma = 0.978$ S/m; $\epsilon_r = 54.953$; $\rho = 1000$ kg/m³
Phantom section: Flat Section

DASY5 Configuration:

Probe: EX3DV4 - SN7337; ConvF(10.29, 10.29, 10.29); Calibrated: 11/28/2017; Electronics: DAE4 Sn1392
Sensor-Surface: 2mm (Mechanical Surface Detection)
Phantom: SAM with CRP v5.0; Type: QD000P40CD; Serial: TP:1837
Measurement SW: DASY52, Version 52.8 (8); SEMCAD X Version 14.6.10 (7331)

Test Date: 2018-03-20; Ambient Temp: 21.0; Tissue Temp: 21.5

835 MHz System Body Verification

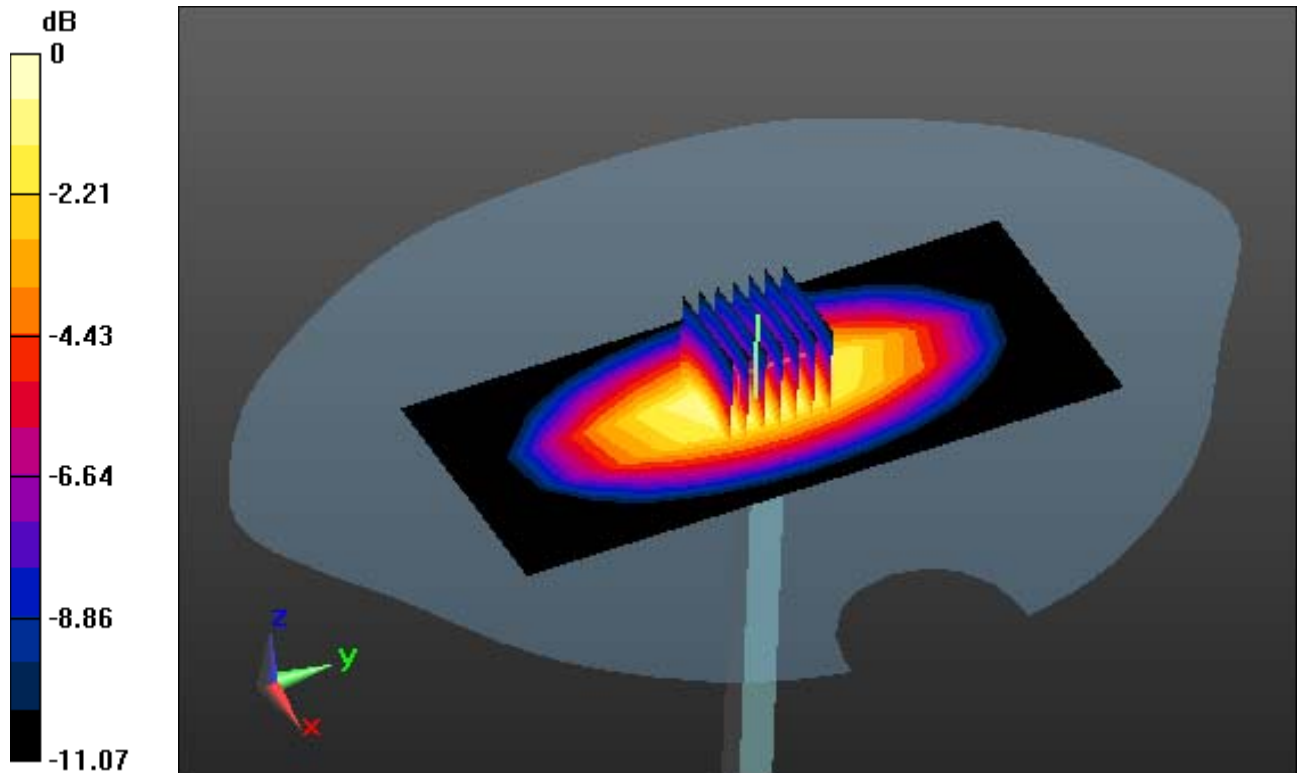
Area Scan (6x13x1): Measurement grid: dx=15mm, dy=15mm

Zoom Scan (7x7x7)/Cube 0: Measurement grid: dx=5mm, dy=5mm, dz=5mm

Power Drift = -0.01 dB

Peak SAR (extrapolated) = 2.98 W/kg

SAR(1 g) = 2.48 W/kg; SAR(10 g) = 1.63 W/kg



0 dB = 2.54 W/kg

DT&C Co., Ltd.

DUT: Dipole 835 MHz; Type: D835V2; Serial: D835V2 - SN:464

Communication System: UID 0, CW (0); Frequency: 835 MHz; Duty Cycle: 1:1
Medium parameters used: $f = 835$ MHz; $\sigma = 0.885$ S/m; $\epsilon_r = 41.935$; $\rho = 1000$ kg/m³
Phantom section: Flat Section

DASY5 Configuration:

Probe: EX3DV4 - SN7337; ConvF(10.27, 10.27, 10.27); Calibrated: 11/28/2017; Electronics: DAE4 Sn1392
Sensor-Surface: 2mm (Mechanical Surface Detection)
Phantom: SAM with CRP v5.0; Type: QD000P40CD; Serial: TP:1837
Measurement SW: DASY52, Version 52.8 (8); SEMCAD X Version 14.6.10 (7331)

Test Date: 2018-03-21; Ambient Temp: 20.8; Tissue Temp: 21.3

835 MHz System Head Verification

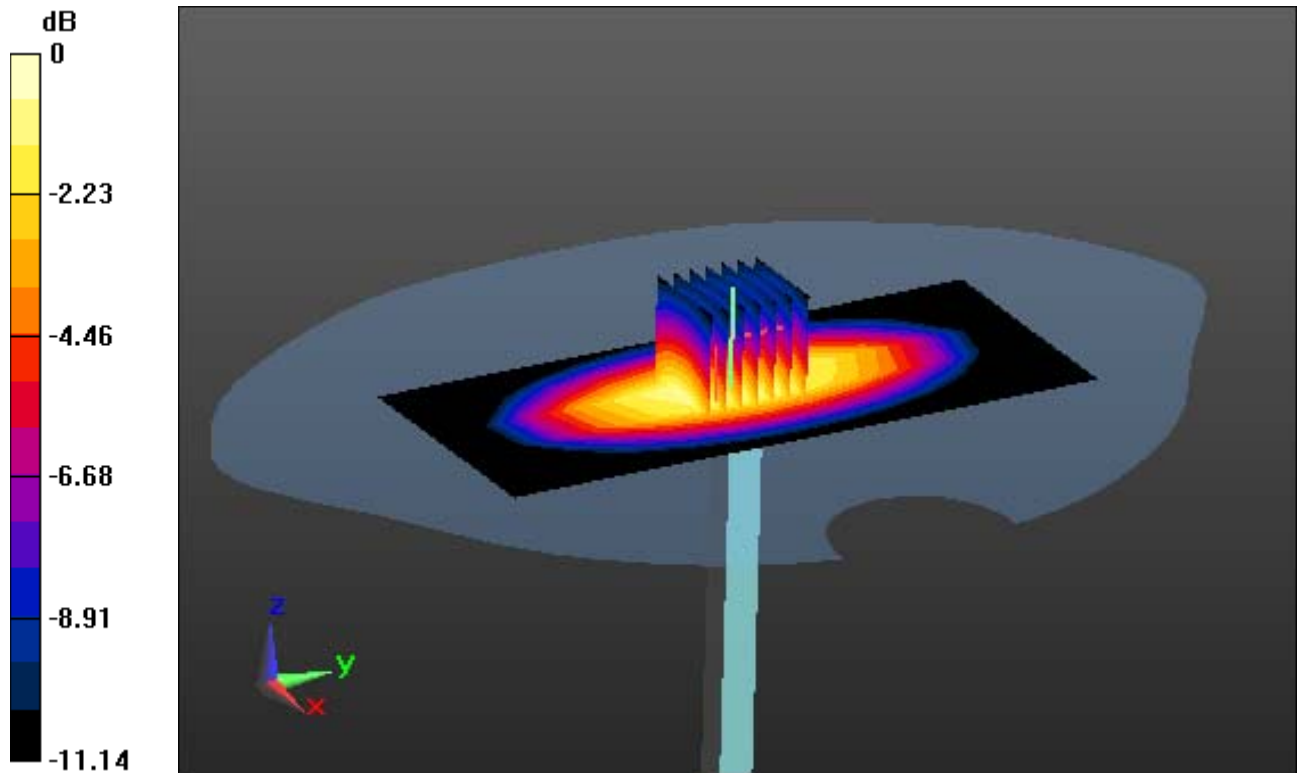
Area Scan (6x13x1): Measurement grid: dx=15mm, dy=15mm

Zoom Scan (7x7x7)/Cube 0: Measurement grid: dx=5mm, dy=5mm, dz=5mm

Power Drift = -0.15 dB

Peak SAR (extrapolated) = 3.07 W/kg

SAR(1 g) = 2.38 W/kg; SAR(10 g) = 1.54 W/kg



0 dB = 2.85 W/kg

DT&C Co., Ltd.

DUT: Dipole 835 MHz; Type: D835V2; Serial: D835V2 - SN:464

Communication System: UID 0, CW (0); Frequency: 835 MHz; Duty Cycle: 1:1
Medium parameters used: $f = 835$ MHz; $\sigma = 0.981$ S/m; $\epsilon_r = 55.103$; $\rho = 1000$ kg/m³
Phantom section: Flat Section

DASY5 Configuration:

Probe: EX3DV4 - SN7337; ConvF(10.29, 10.29, 10.29); Calibrated: 11/28/2017; Electronics: DAE4 Sn1392
Sensor-Surface: 2mm (Mechanical Surface Detection)
Phantom: SAM with CRP v5.0; Type: QD000P40CD; Serial: TP:1837
Measurement SW: DASY52, Version 52.8 (8); SEMCAD X Version 14.6.10 (7331)

Test Date: 2018-03-21; Ambient Temp: 20.8; Tissue Temp: 21.4

835 MHz System Body Verification

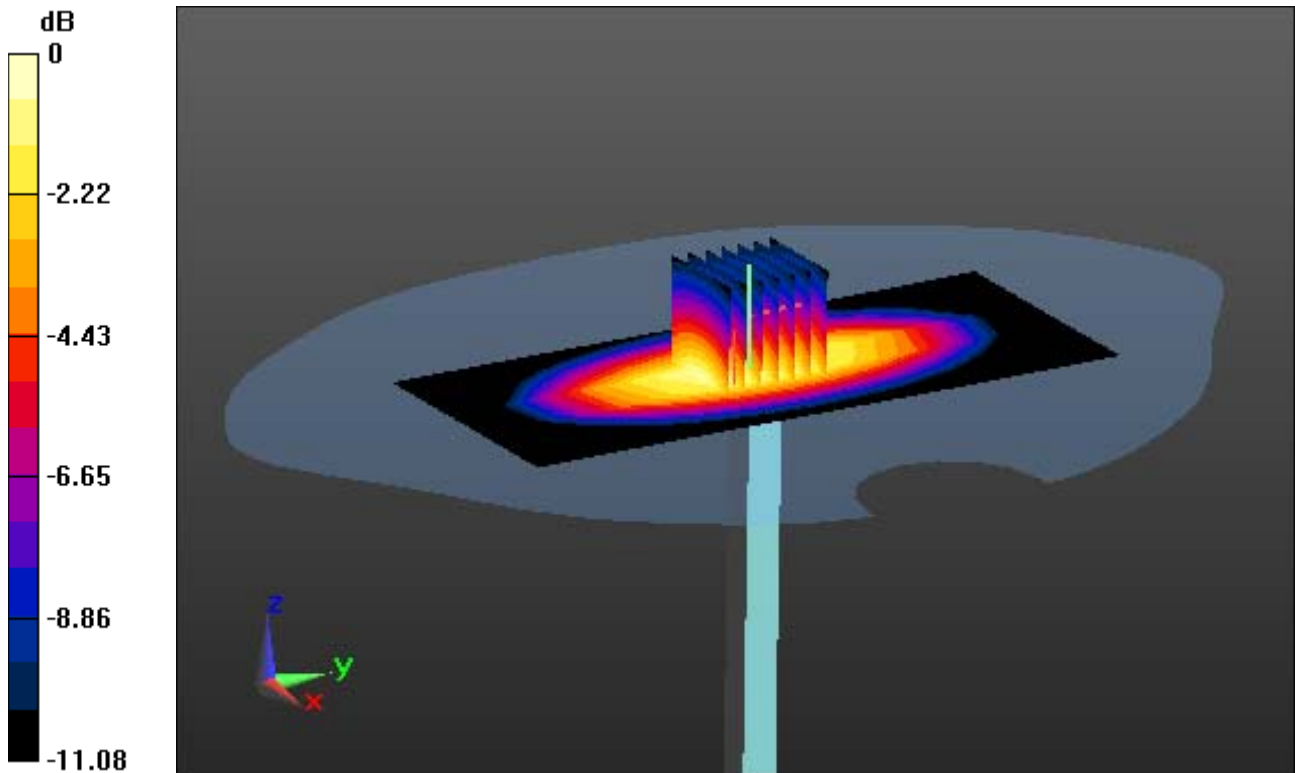
Area Scan (6x13x1): Measurement grid: dx=15mm, dy=15mm

Zoom Scan (7x7x7)/Cube 0: Measurement grid: dx=5mm, dy=5mm, dz=5mm

Power Drift = -0.03 dB

Peak SAR (extrapolated) = 3.14 W/kg

SAR(1 g) = 2.37 W/kg; SAR(10 g) = 1.58 W/kg



0 dB = 2.76 W/kg

DT&C Co., Ltd.

DUT: Dipole 1900 MHz; Type: D1900V2; Serial: D1900V2 - SN:5d029

Communication System: UID 0, CW; Frequency: 1900 MHz; Duty Cycle: 1:1
Medium parameters used: $f = 1900$ MHz; $\sigma = 1.391$ S/m; $\epsilon_r = 40.209$; $\rho = 1000$ kg/m³
Phantom section: Flat Section

DASY5 Configuration:

Probe: EX3DV4 - SN7337; ConvF(8.46, 8.46, 8.46); Calibrated: 11/28/2017; Electronics: DAE4 Sn1392
Sensor-Surface: 2mm (Mechanical Surface Detection)
Phantom: SAM with CRP v5.0; Type: QD000P40CD; Serial: TP:1837
Measurement SW: DASY52, Version 52.8 (8); SEMCAD X Version 14.6.10 (7331)

Test Date: 2018-03-22; Ambient Temp: 20.6; Tissue Temp: 21.1

1900 MHz System Head Verification

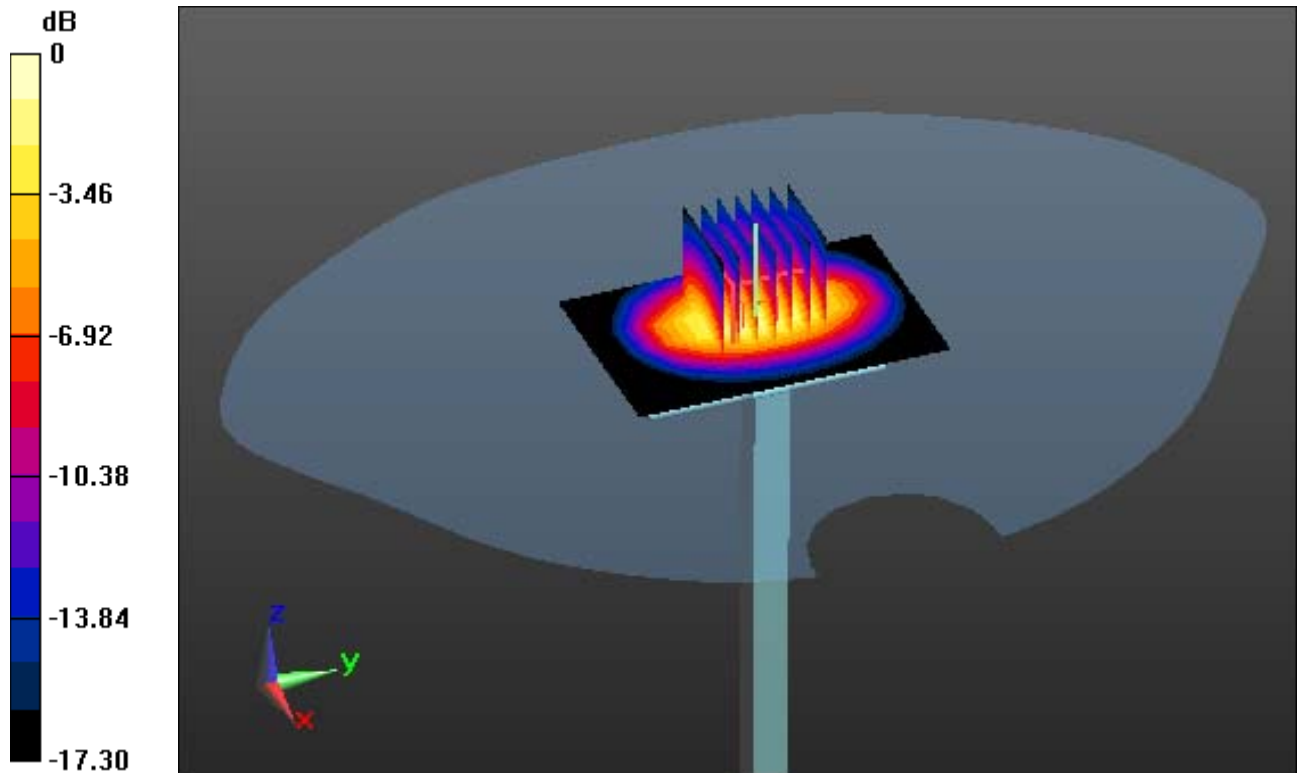
Area Scan (7x10x1): Measurement grid: dx=10mm, dy=10mm

Zoom Scan (7x7x7)/Cube 0: Measurement grid: dx=5mm, dy=5mm, dz=5mm

Power Drift = 0.14 dB

Peak SAR (extrapolated) = 8.12 W/kg

SAR(1 g) = 3.89 W/kg; SAR(10 g) = 2.05 W/kg



0 dB = 5.61 W/kg

DT&C Co., Ltd.

DUT: Dipole 1900 MHz; Type: D1900V2; Serial: D1900V2 - SN:5d029

Communication System: UID 0, CW; Frequency: 1900 MHz; Duty Cycle: 1:1
Medium parameters used: $f = 1900$ MHz; $\sigma = 1.541$ S/m; $\epsilon_r = 53.075$; $\rho = 1000$ kg/m³
Phantom section: Flat Section

DASY5 Configuration:

Probe: EX3DV4 - SN7337; ConvF(8.2, 8.2, 8.2); Calibrated: 11/28/2017; Electronics: DAE4 Sn1392
Sensor-Surface: 2mm (Mechanical Surface Detection)
Phantom: SAM with CRP v5.0; Type: QD000P40CD; Serial: TP:1837
Measurement SW: DASY52, Version 52.8 (8); SEMCAD X Version 14.6.10 (7331)

Test Date: 2018-03-23; Ambient Temp: 20.8; Tissue Temp: 21.2

1900 MHz System Body Verification

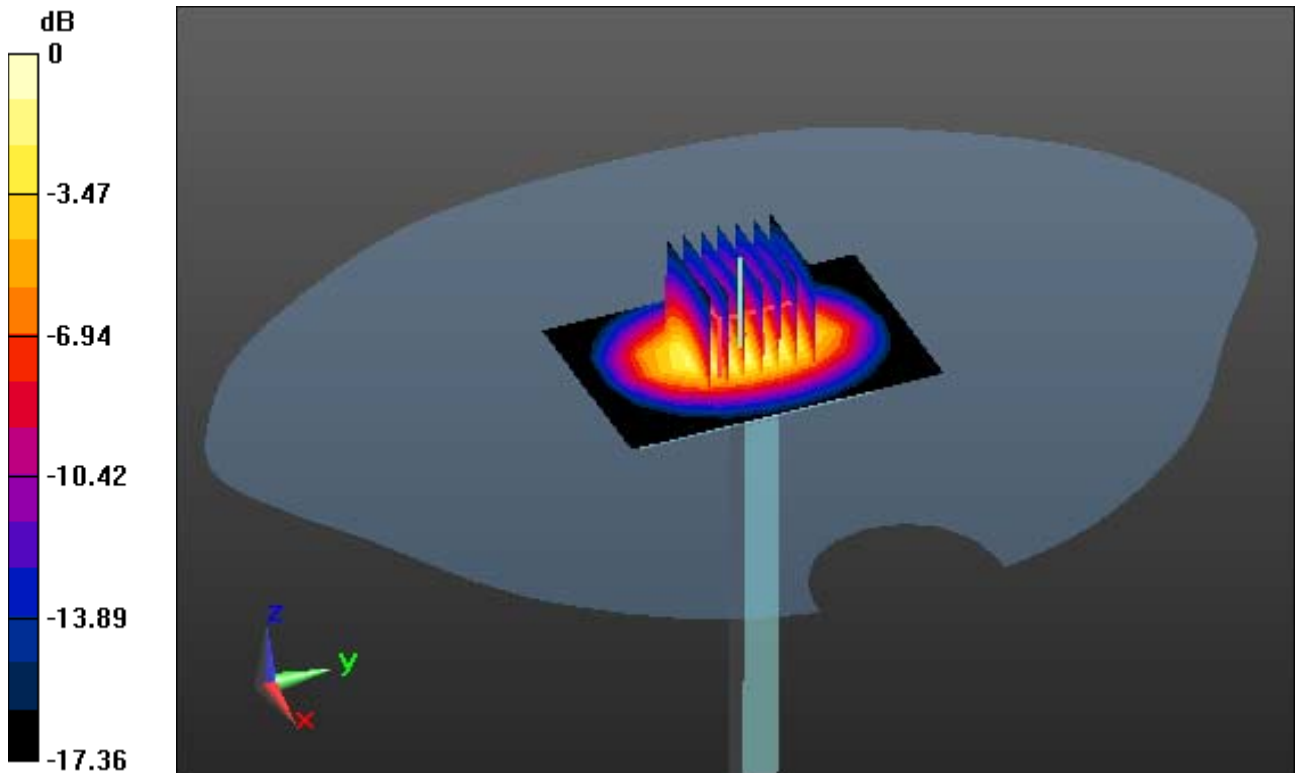
Area Scan (7x10x1): Measurement grid: dx=10mm, dy=10mm

Zoom Scan (7x7x7)/Cube 0: Measurement grid: dx=5mm, dy=5mm, dz=5mm

Power Drift = 0.09 dB

Peak SAR (extrapolated) = 8.27 W/kg

SAR(1 g) = 4.04 W/kg; SAR(10 g) = 2.06 W/kg



0 dB = 5.97 W/kg

DT&C Co., Ltd.

DUT: Dipole 2450 MHz; Type: D2450V2; Serial: D2450V2 - SN:726

Communication System: UID 0, CW; Frequency: 2450 MHz; Duty Cycle: 1:1
Medium parameters used: $f = 2450$ MHz; $\sigma = 1.854$ S/m; $\epsilon_r = 39.187$; $\rho = 1000$ kg/m³
Phantom section: Flat Section

DASY5 Configuration:

Probe: EX3DV4 - SN7337; ConvF(7.7, 7.7, 7.7); Calibrated: 11/28/2017; Electronics: DAE4 Sn1392
Sensor-Surface: 2mm (Mechanical Surface Detection)
Phantom: SAM with CRP v5.0; Type: QD000P40CD; Serial: TP:1837
Measurement SW: DASY52, Version 52.8 (8); SEMCAD X Version 14.6.10 (7331)

Test Date: 2018-03-27; Ambient Temp: 21.0; Tissue Temp: 20.3

2450 MHz System Head Verification

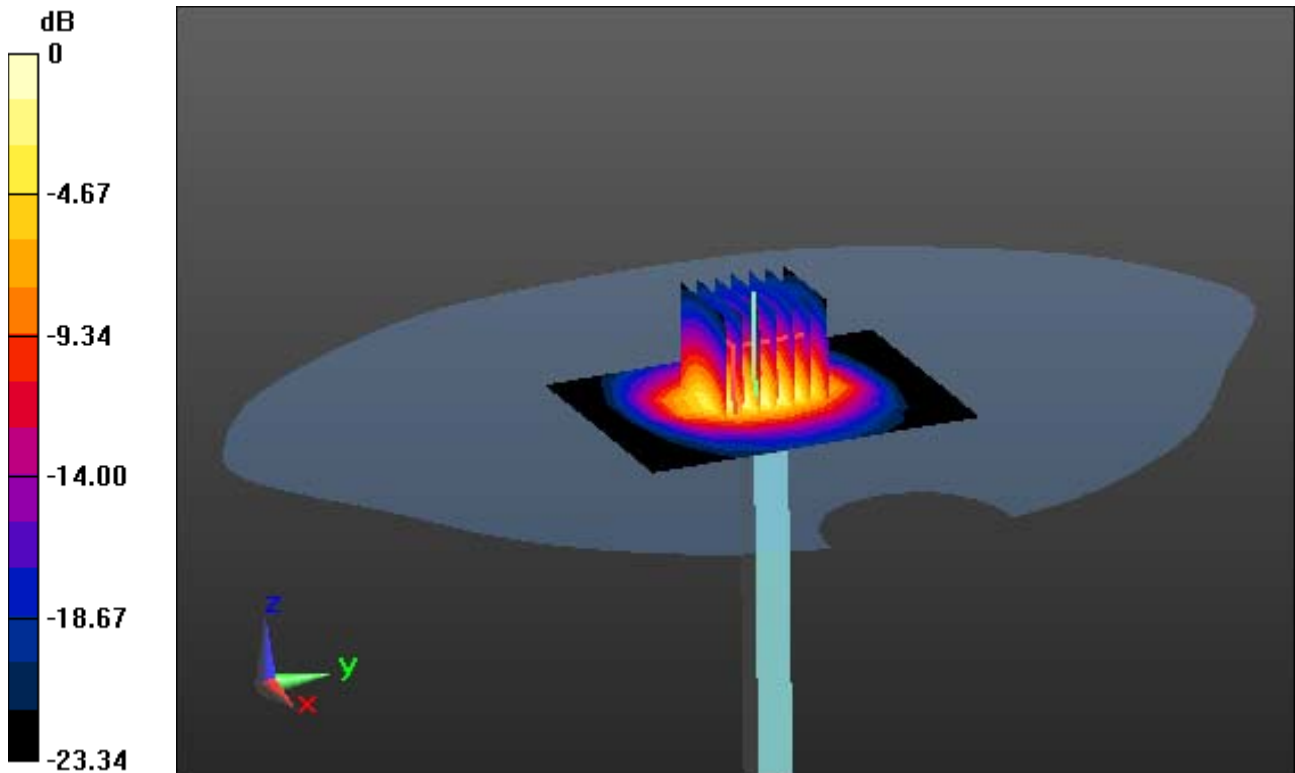
Area Scan (7x9x1): Measurement grid: dx=12mm, dy=12mm

Zoom Scan (7x7x7)/Cube 0: Measurement grid: dx=5mm, dy=5mm, dz=5mm

Power Drift = 0.01 dB

Peak SAR (extrapolated) = 9.43 W/kg

SAR(1 g) = 5.28 W/kg; SAR(10 g) = 2.36 W/kg



0 dB = 7.19 W/kg

DT&C Co., Ltd.

DUT: Dipole 2450 MHz; Type: D2450V2; Serial: D2450V2 - SN:726

Communication System: UID 0, CW; Frequency: 2450 MHz; Duty Cycle: 1:1
Medium parameters used: $f = 2450$ MHz; $\sigma = 1.913$ S/m; $\epsilon_r = 51.295$; $\rho = 1000$ kg/m³
Phantom section: Flat Section

DASY5 Configuration:

Probe: EX3DV4 - SN7337; ConvF(7.88, 7.88, 7.88); Calibrated: 11/28/2017; Electronics: DAE4 Sn1392
Sensor-Surface: 2mm (Mechanical Surface Detection)
Phantom: SAM with CRP v5.0; Type: QD000P40CD; Serial: TP:1837
Measurement SW: DASY52, Version 52.8 (8); SEMCAD X Version 14.6.10 (7331)

Test Date: 2018-03-28; Ambient Temp: 21.1; Tissue Temp: 21.4

2450 MHz System Body Verification

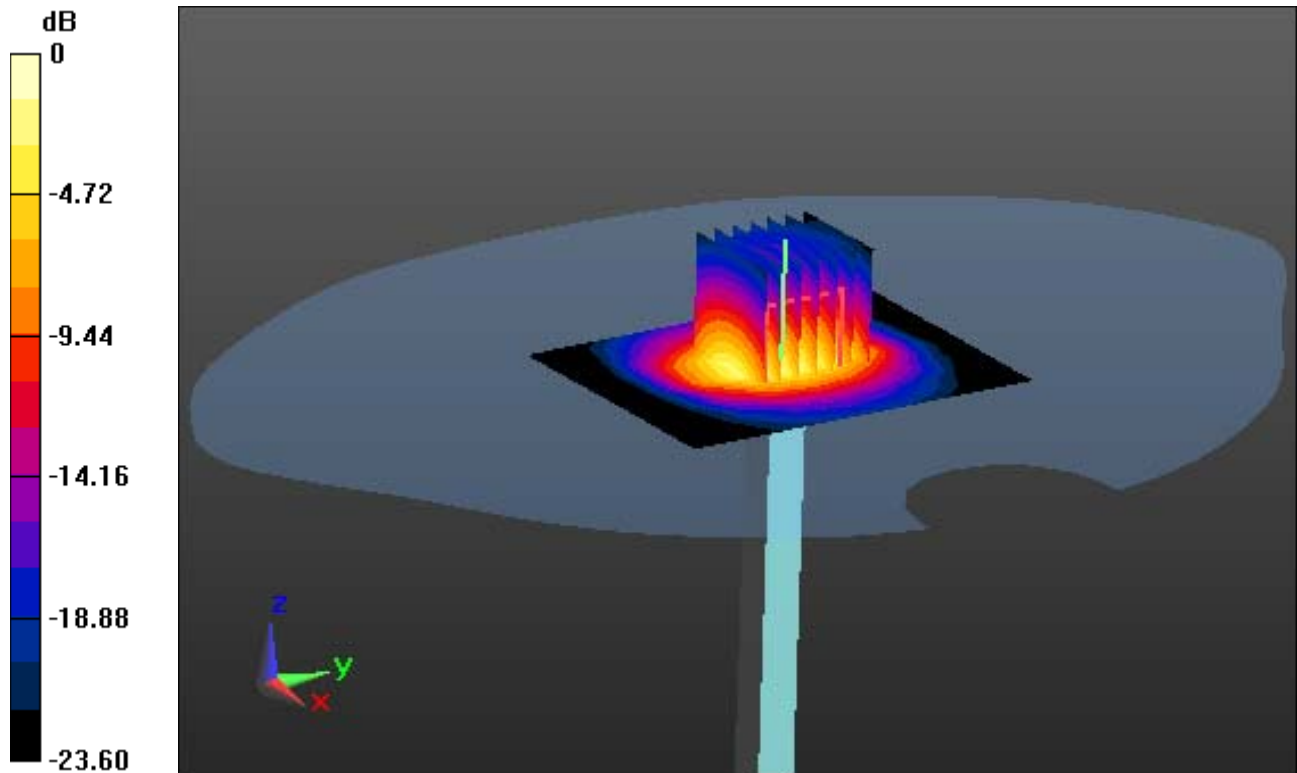
Area Scan (7x9x1): Measurement grid: dx=12mm, dy=12mm

Zoom Scan (7x7x7)/Cube 0: Measurement grid: dx=5mm, dy=5mm, dz=5mm

Power Drift = -0.01 dB

Peak SAR (extrapolated) = 8.12 W/kg

SAR(1 g) = 4.96 W/kg; SAR(10 g) = 2.27 W/kg



0 dB = 6.83 W/kg

DT&C Co., Ltd.

DUT: Dipole 2600 MHz D2600V2; Type: D2600V2; Serial: D2600V2 - SN:1103

Communication System: UID 0, CW (0); Frequency: 2600 MHz; Duty Cycle: 1:1
Medium parameters used: $f = 2600$ MHz; $\sigma = 1.999$ S/m; $\epsilon_r = 38.913$; $\rho = 1000$ kg/m³
Phantom section: Flat Section

DASY5 Configuration:

Probe: EX3DV4 - SN7337; ConvF(7.48, 7.48, 7.48); Calibrated: 11/28/2017; Electronics: DAE4 Sn1392
Sensor-Surface: 2mm (Mechanical Surface Detection)
Phantom: SAM with CRP v5.0; Type: QD000P40CD; Serial: TP:1837
Measurement SW: DASY52, Version 52.8 (8); SEMCAD X Version 14.6.10 (7331)

Test Date: 2018-03-26; Ambient Temp: 20.9; Tissue Temp: 20.5

2600 MHz System Head Verification

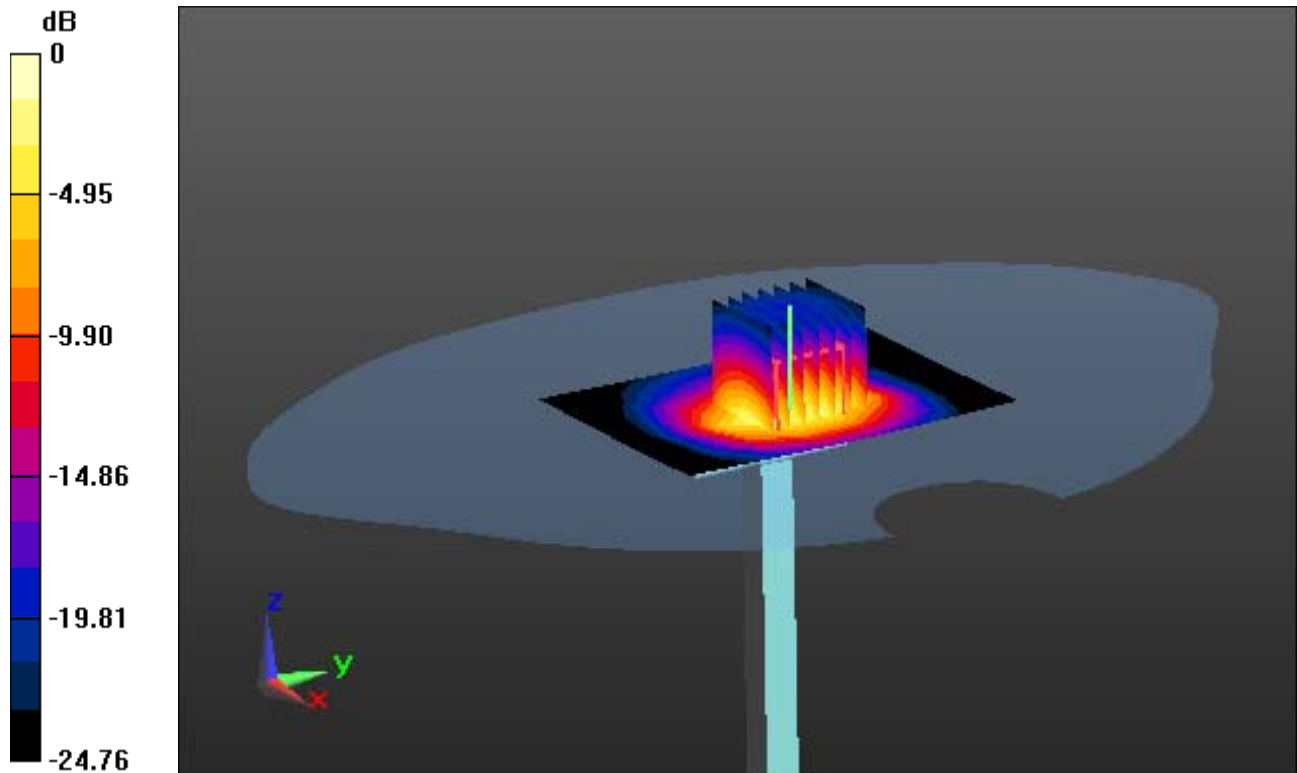
Area Scan (6x8x1): Measurement grid: dx=12mm, dy=12mm

Zoom Scan (7x7x7)/Cube 0: Measurement grid: dx=5mm, dy=5mm, dz=5mm

Power Drift = -0.06 dB

Peak SAR (extrapolated) = 10.9 W/kg

SAR(1 g) = 5.38 W/kg; SAR(10 g) = 2.44 W/kg



0 dB = 8.32 W/kg

DT&C Co., Ltd.

DUT: Dipole 2600 MHz D2600V2; Type: D2600V2; Serial: D2600V2 - SN:1103

Communication System: UID 0, CW (0); Frequency: 2600 MHz; Duty Cycle: 1:1
Medium parameters used: $f = 2600$ MHz; $\sigma = 2.143$ S/m; $\epsilon_r = 52.378$; $\rho = 1000$ kg/m³
Phantom section: Flat Section

DASY5 Configuration:

Probe: EX3DV4 - SN7337; ConvF(7.52, 7.52, 7.52); Calibrated: 11/28/2017; Electronics: DAE4 Sn1392
Sensor-Surface: 2mm (Mechanical Surface Detection)
Phantom: SAM with CRP v5.0; Type: QD000P40CD; Serial: TP:1837
Measurement SW: DASY52, Version 52.8 (8); SEMCAD X Version 14.6.10 (7331)

Test Date: 2018-03-26; Ambient Temp: 20.9; Tissue Temp: 20.6

2600 MHz System Body Verification

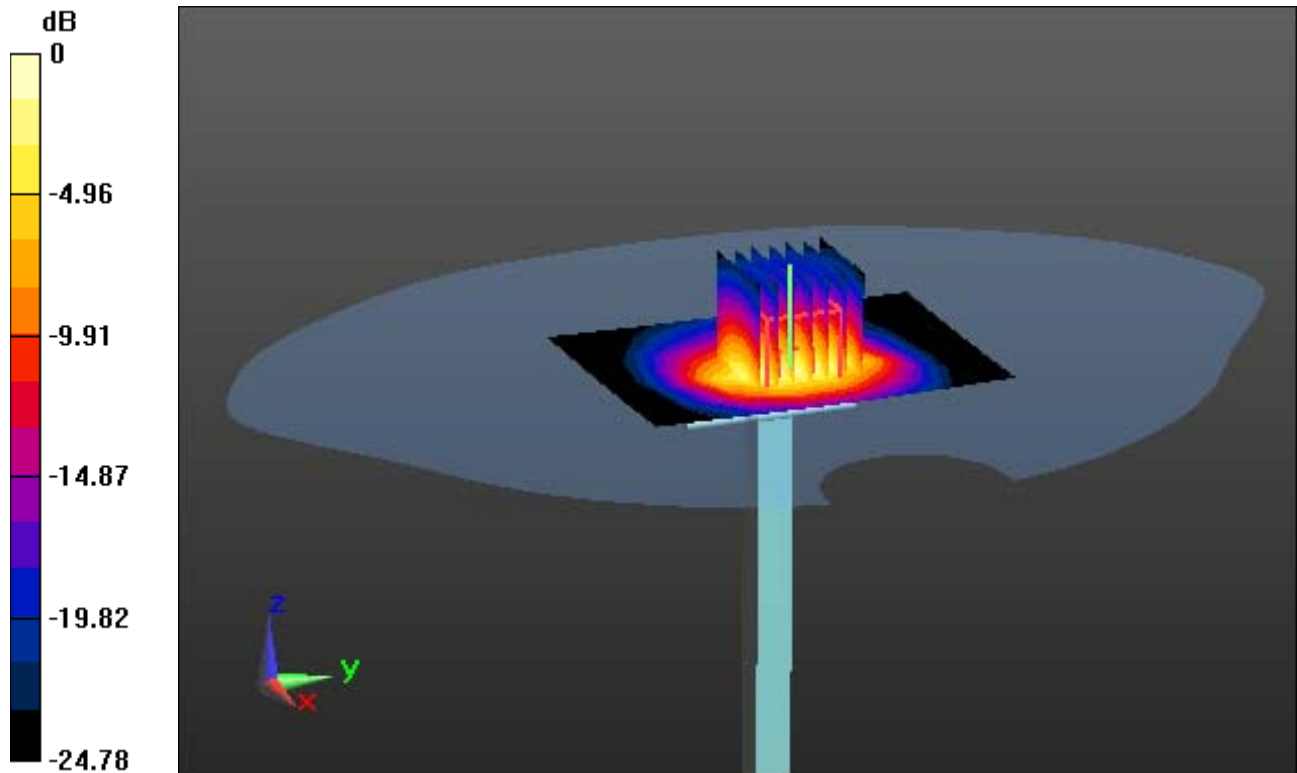
Area Scan (6x8x1): Measurement grid: dx=12mm, dy=12mm

Zoom Scan (7x7x7)/Cube 0: Measurement grid: dx=5mm, dy=5mm, dz=5mm

Power Drift = -0.07 dB

Peak SAR (extrapolated) = 11.2 W/kg

SAR(1 g) = 5.42 W/kg; SAR(10 g) = 2.41 W/kg



0 dB = 8.13 W/kg

DT&C Co., Ltd.

DUT: LM-Q710GX; Type: Bar

Communication System: UID 0, GSM850 (0); Frequency: 836.6 MHz; Duty Cycle: 1:8.3
Medium parameters used: $f = 836.6$ MHz; $\sigma = 0.887$ S/m; $\epsilon_r = 41.92$; $\rho = 1000$ kg/m³
Phantom section: Left Section

DASY5 Configuration:

Probe: EX3DV4 - SN7337; ConvF(10.27, 10.27, 10.27); Calibrated: 11/28/2017; Electronics: DAE4 Sn1392
Sensor-Surface: 2mm (Mechanical Surface Detection)
Phantom: SAM with CRP v5.0; Type: QD000P40CD; Serial: TP:1837
Measurement SW: DASY52, Version 52.8 (8); SEMCAD X Version 14.6.10 (7331)

Test Date: 2018-03-19; Ambient Temp: 21.1; Tissue Temp: 21.5

Left Touch, GSM850 Ch. 190, Ant Internal, Standard Battery

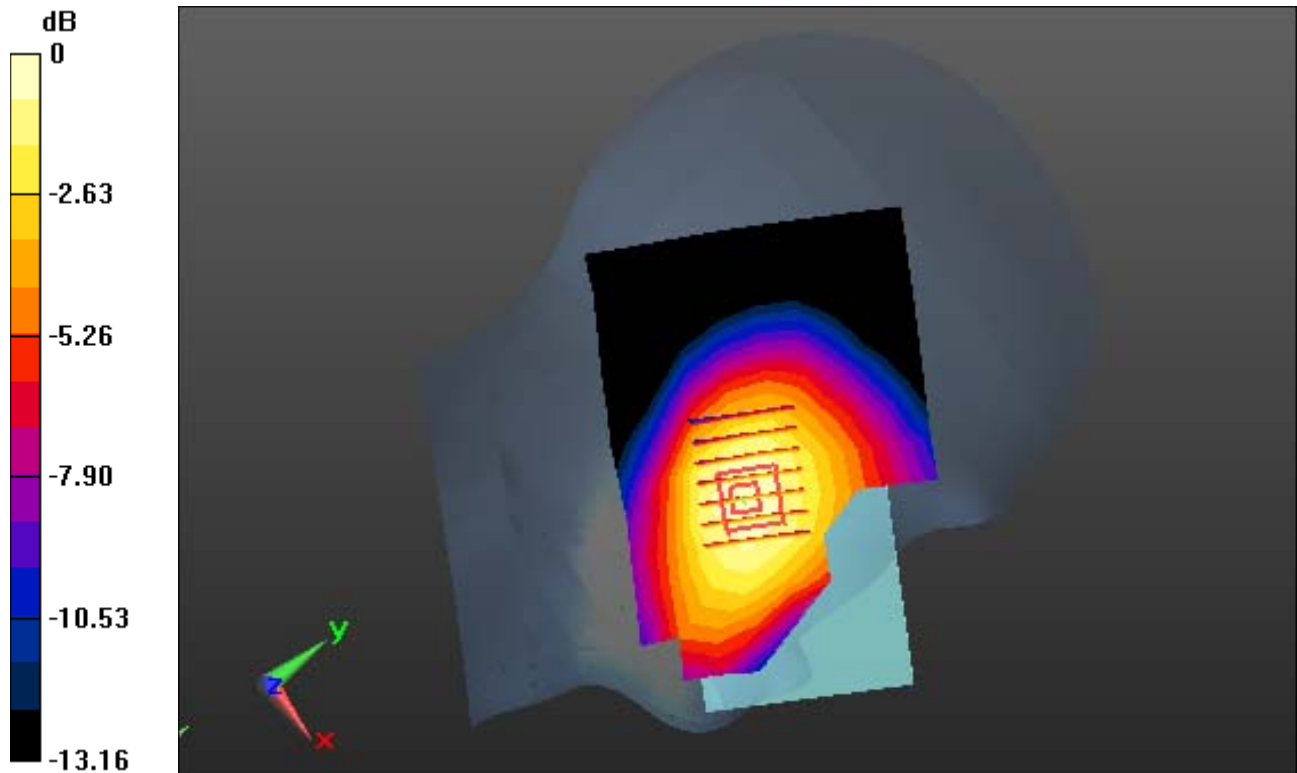
Area Scan (9x14x1): Measurement grid: dx=15mm, dy=15mm

Zoom Scan (6x7x7)/Cube 0: Measurement grid: dx=8mm, dy=8mm, dz=5mm

Power Drift = 0.01 dB

Peak SAR (extrapolated) = 0.184 W/kg

SAR(1 g) = 0.144 W/kg; SAR(10 g) = 0.110 W/kg



0 dB = 0.165 W/kg

DT&C Co., Ltd.

DUT: LM-Q710GX; Type: Bar

Communication System: UID 0, GSM850 4TX (0); Frequency: 836.6 MHz; Duty Cycle: 1:2.075

Medium parameters used: $f = 836.6$ MHz; $\sigma = 0.887$ S/m; $\epsilon_r = 41.92$; $\rho = 1000$ kg/m³

Phantom section: Left Section

DASY5 Configuration:

Probe: EX3DV4 - SN7337; ConvF(10.27, 10.27, 10.27); Calibrated: 11/28/2017; Electronics: DAE4 Sn1392

Sensor-Surface: 2mm (Mechanical Surface Detection)

Phantom: SAM with CRP v5.0; Type: QD000P40CD; Serial: TP:1837

Measurement SW: DASY52, Version 52.8 (8); SEMCAD X Version 14.6.10 (7331)

Test Date: 2018-03-19; Ambient Temp: 21.1; Tissue Temp: 21.5

Left Touch, GSM850 GPRS 4 Tx, Ch. 190, Ant Internal, Standard Battery

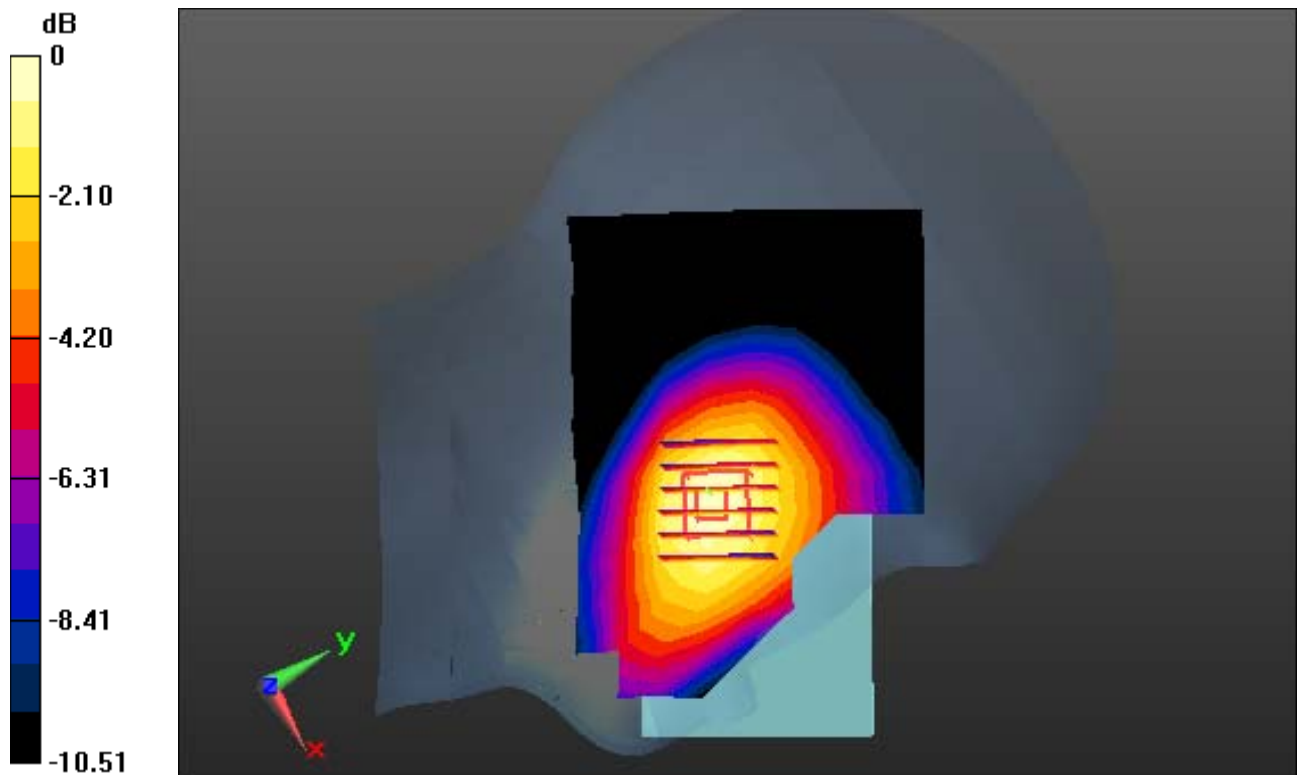
Area Scan (9x14x1): Measurement grid: dx=15mm, dy=15mm

Zoom Scan (6x6x7)/Cube 0: Measurement grid: dx=8mm, dy=8mm, dz=5mm

Power Drift = 0.06 dB

Peak SAR (extrapolated) = 0.377 W/kg

SAR(1 g) = 0.289 W/kg; SAR(10 g) = 0.217 W/kg



0 dB = 0.332 W/kg

DT&C Co., Ltd.

DUT: LM-Q710GX; Type: Bar

Communication System: UID 0, PCS 1900 (0); Frequency: 1880 MHz; Duty Cycle: 1:8.3
Medium parameters used: $f = 1880$ MHz; $\sigma = 1.375$ S/m; $\epsilon_r = 40.251$; $\rho = 1000$ kg/m³
Phantom section: Left Section

DASY5 Configuration:

Probe: EX3DV4 - SN7337; ConvF(8.46, 8.46, 8.46); Calibrated: 11/28/2017; Electronics: DAE4 Sn1392
Sensor-Surface: 2mm (Mechanical Surface Detection)
Phantom: SAM with CRP v5.0; Type: QD000P40CD; Serial: TP:1837
Measurement SW: DASY52, Version 52.8 (8); SEMCAD X Version 14.6.10 (7331)

Test Date: 2018-03-22; Ambient Temp: 20.6; Tissue Temp: 21.1

Left Touch, PCS1900 Ch. 661, Ant Internal, Standard Battery

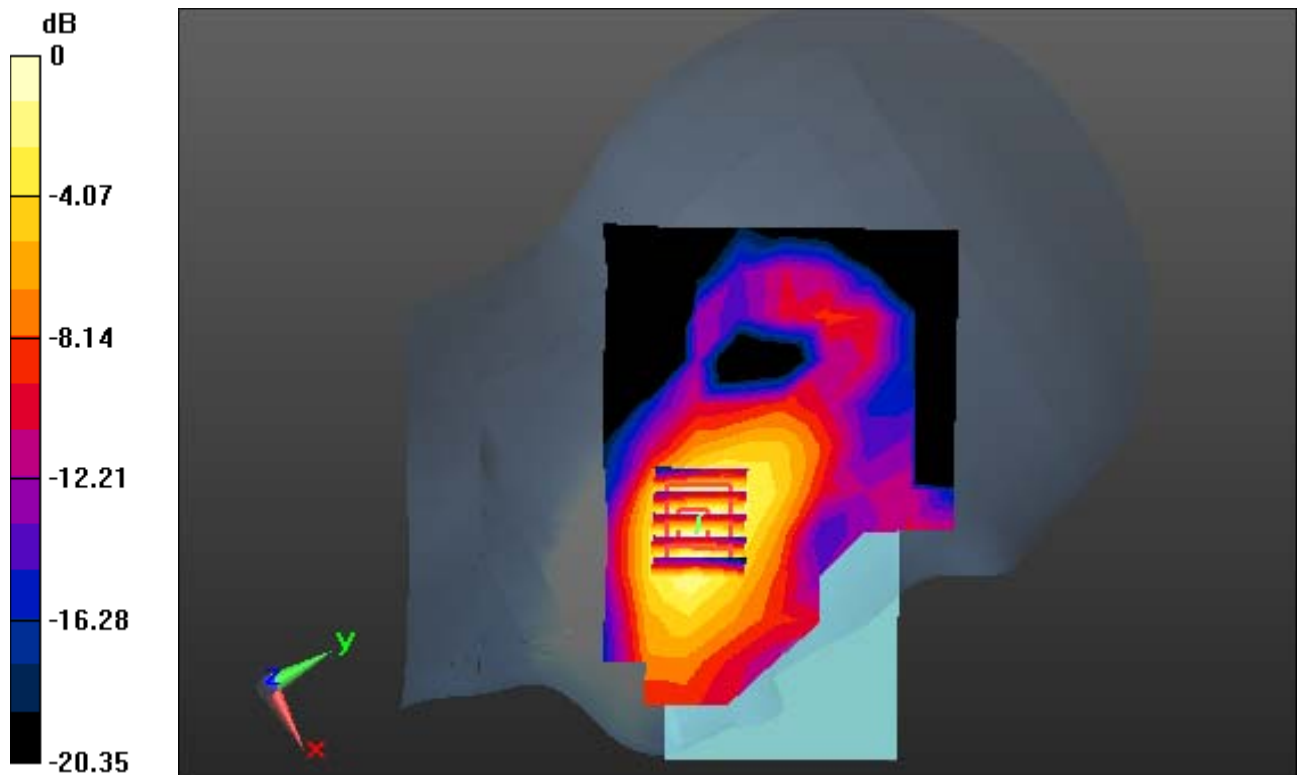
Area Scan (9x14x1): Measurement grid: dx=15mm, dy=15mm

Zoom Scan (5x5x7)/Cube 0: Measurement grid: dx=8mm, dy=8mm, dz=5mm

Power Drift = 0.18 dB

Peak SAR (extrapolated) = 0.128 W/kg

SAR(1 g) = 0.080 W/kg; SAR(10 g) = 0.047 W/kg



0 dB = 0.102 W/kg

DT&C Co., Ltd.

DUT: LM-Q710GX; Type: Bar

Communication System: UID 0, PCS 1900 4TX (0); Frequency: 1880 MHz; Duty Cycle: 1:2.075
Medium parameters used: $f = 1880$ MHz; $\sigma = 1.375$ S/m; $\epsilon_r = 40.251$; $\rho = 1000$ kg/m³
Phantom section: Left Section

DASY5 Configuration:

Probe: EX3DV4 - SN7337; ConvF(8.46, 8.46, 8.46); Calibrated: 11/28/2017; Electronics: DAE4 Sn1392
Sensor-Surface: 2mm (Mechanical Surface Detection)
Phantom: SAM with CRP v5.0; Type: QD000P40CD; Serial: TP:1837
Measurement SW: DASY52, Version 52.8 (8); SEMCAD X Version 14.6.10 (7331)

Test Date: 2018-03-22; Ambient Temp: 20.6; Tissue Temp: 21.1

Left Touch, PCS1900 GPRS 4 Tx, Ch. 661, Ant Internal, Standard Battery

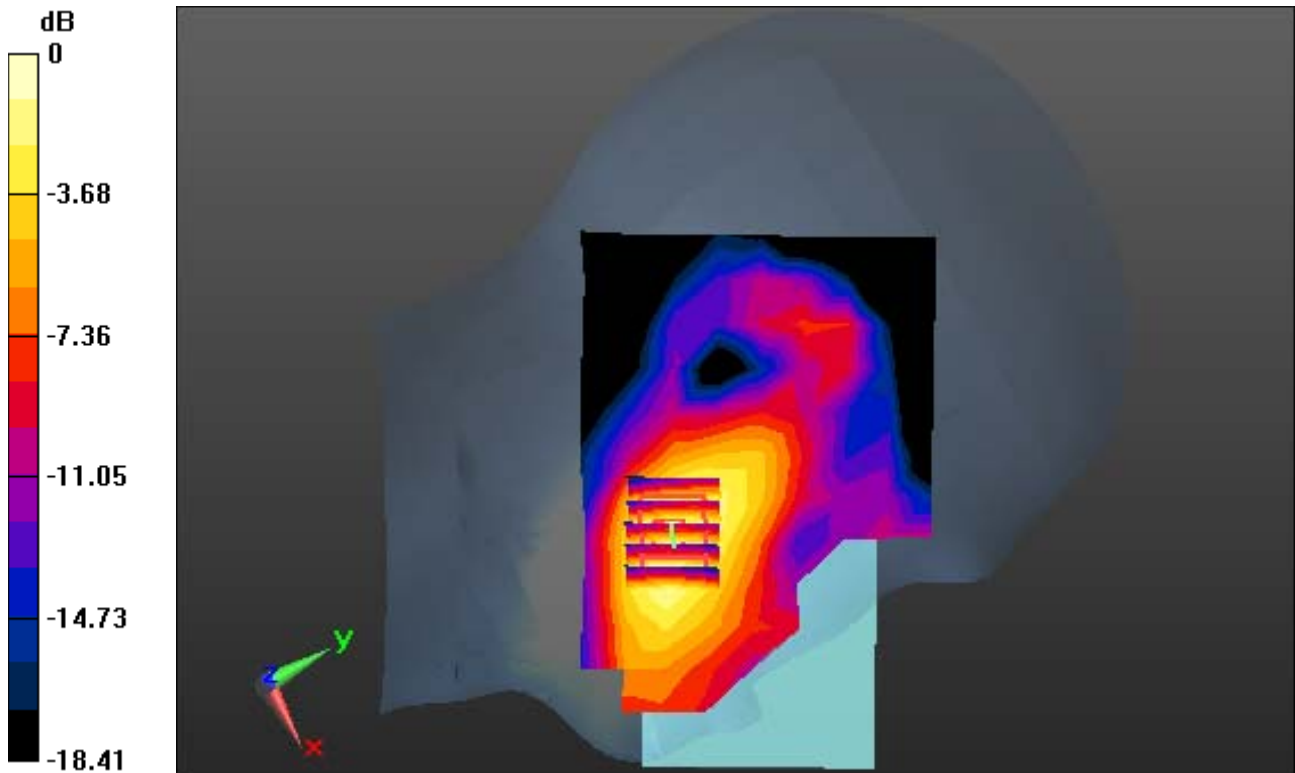
Area Scan (9x14x1): Measurement grid: dx=15mm, dy=15mm

Zoom Scan (5x5x7)/Cube 0: Measurement grid: dx=8mm, dy=8mm, dz=5mm

Power Drift = 0.12 dB

Peak SAR (extrapolated) = 0.253 W/kg

SAR(1 g) = 0.157 W/kg; SAR(10 g) = 0.094 W/kg



0 dB = 0.200 W/kg

DT&C Co., Ltd.

DUT: LM-Q710GX; Type: Bar

Communication System: UID 0, WCDMA 850 (0); Frequency: 836.6 MHz; Duty Cycle: 1:1
Medium parameters used: $f = 836.6$ MHz; $\sigma = 0.887$ S/m; $\epsilon_r = 41.92$; $\rho = 1000$ kg/m³
Phantom section: Right Section

DASY5 Configuration:

Probe: EX3DV4 - SN7337; ConvF(10.27, 10.27, 10.27); Calibrated: 11/28/2017; Electronics: DAE4 Sn1392
Sensor-Surface: 2mm (Mechanical Surface Detection)
Phantom: SAM with CRP v5.0; Type: QD000P40CD; Serial: TP:1837
Measurement SW: DASY52, Version 52.8 (8); SEMCAD X Version 14.6.10 (7331)

Test Date: 2018-03-19; Ambient Temp: 21.1; Tissue Temp: 21.5

Right Touch, WCDMA850 Ch. 4183, Ant Internal, Standard Battery

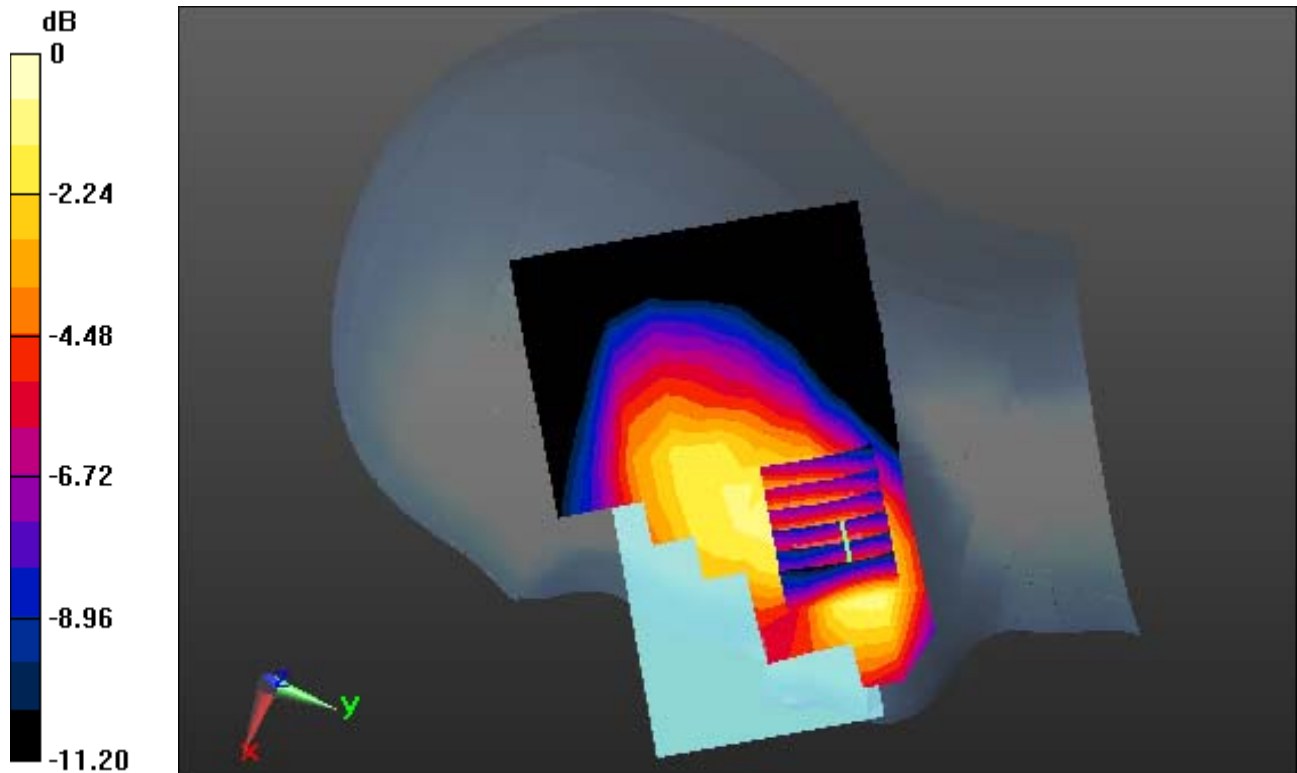
Area Scan (9x14x1): Measurement grid: dx=15mm, dy=15mm

Zoom Scan (6x6x7)/Cube 0: Measurement grid: dx=8mm, dy=8mm, dz=5mm

Power Drift = -0.09 dB

Peak SAR (extrapolated) = 0.404 W/kg

SAR(1 g) = 0.299 W/kg; SAR(10 g) = 0.212 W/kg



0 dB = 0.358 W/kg

DT&C Co., Ltd.

DUT: LM-Q710GX; Type: Bar

Communication System: UID 0, WCDMA 1900 (0); Frequency: 1880 MHz; Duty Cycle: 1:1
Medium parameters used: $f = 1880$ MHz; $\sigma = 1.375$ S/m; $\epsilon_r = 40.251$; $\rho = 1000$ kg/m³
Phantom section: Left Section

DASY5 Configuration:

Probe: EX3DV4 - SN7337; ConvF(8.46, 8.46, 8.46); Calibrated: 11/28/2017; Electronics: DAE4 Sn1392
Sensor-Surface: 2mm (Mechanical Surface Detection)
Phantom: SAM with CRP v5.0; Type: QD000P40CD; Serial: TP:1837
Measurement SW: DASY52, Version 52.8 (8); SEMCAD X Version 14.6.10 (7331)

Test Date: 2018-03-22; Ambient Temp: 20.6; Tissue Temp: 21.1

Left Touch, WCDMA1900 Ch. 9400, Ant Internal, Standard Battery

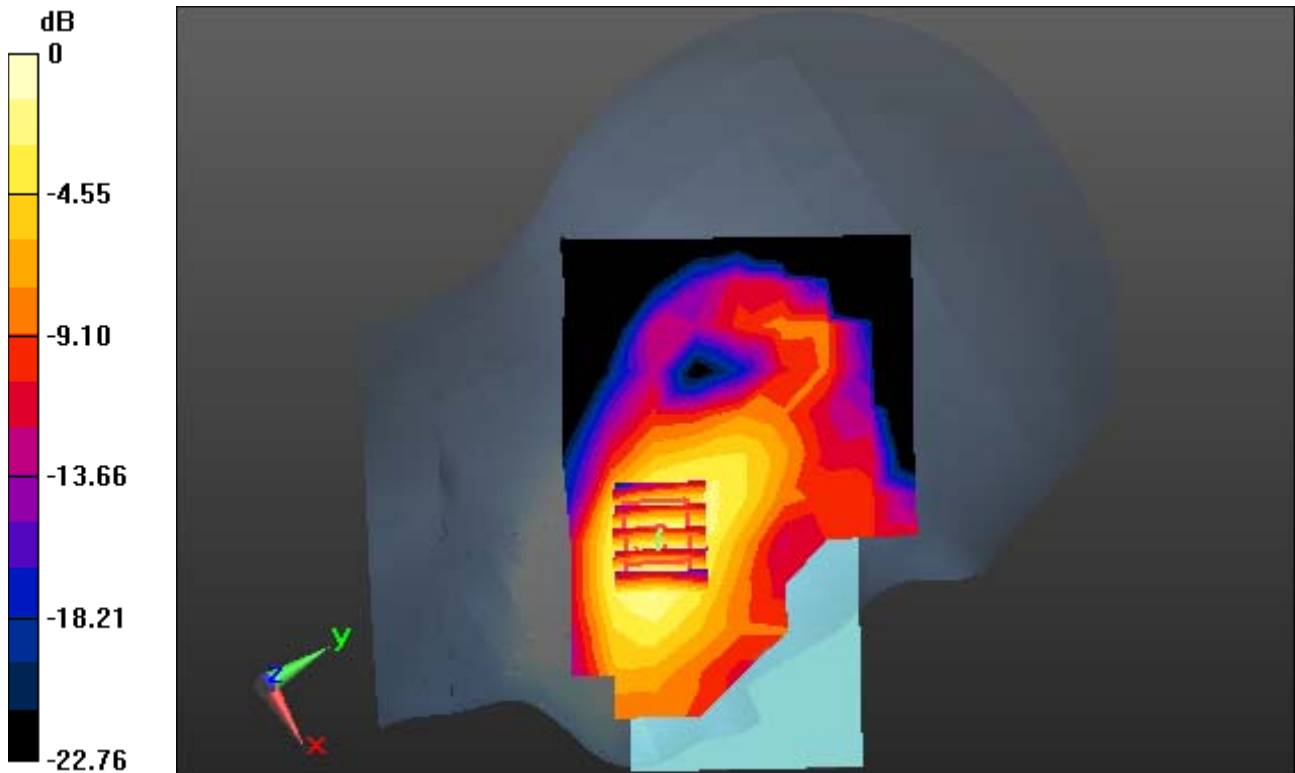
Area Scan (9x14x1): Measurement grid: dx=15mm, dy=15mm

Zoom Scan (5x5x7)/Cube 0: Measurement grid: dx=8mm, dy=8mm, dz=5mm

Power Drift = 0.11 dB

Peak SAR (extrapolated) = 0.149 W/kg

SAR(1 g) = 0.093 W/kg; SAR(10 g) = 0.056 W/kg



0 dB = 0.116 W/kg

DT&C Co., Ltd.

DUT: LM-Q710GX; Type: Bar

Communication System: UID 0, LTE Band 5(FCC) (0); Frequency: 836.5 MHz; Duty Cycle: 1:1
Medium parameters used: $f = 836.5$ MHz; $\sigma = 0.887$ S/m; $\epsilon_r = 41.92$; $\rho = 1000$ kg/m³
Phantom section: Left Section

DASY5 Configuration:

Probe: EX3DV4 - SN7337; ConvF(10.27, 10.27, 10.27); Calibrated: 11/28/2017; Electronics: DAE4 Sn1392
Sensor-Surface: 2mm (Mechanical Surface Detection)
Phantom: SAM with CRP v5.0; Type: QD000P40CD; Serial: TP:1837
Measurement SW: DASY52, Version 52.8 (8); SEMCAD X Version 14.6.10 (7331)

Test Date: 2018-03-21; Ambient Temp: 20.8; Tissue Temp: 21.3

Left Touch, LTE Band 5 Ch. 20525, Ant Internal, Standard Battery

Mode : BandWidth 10 MHz, QPSK, RB Size : 1

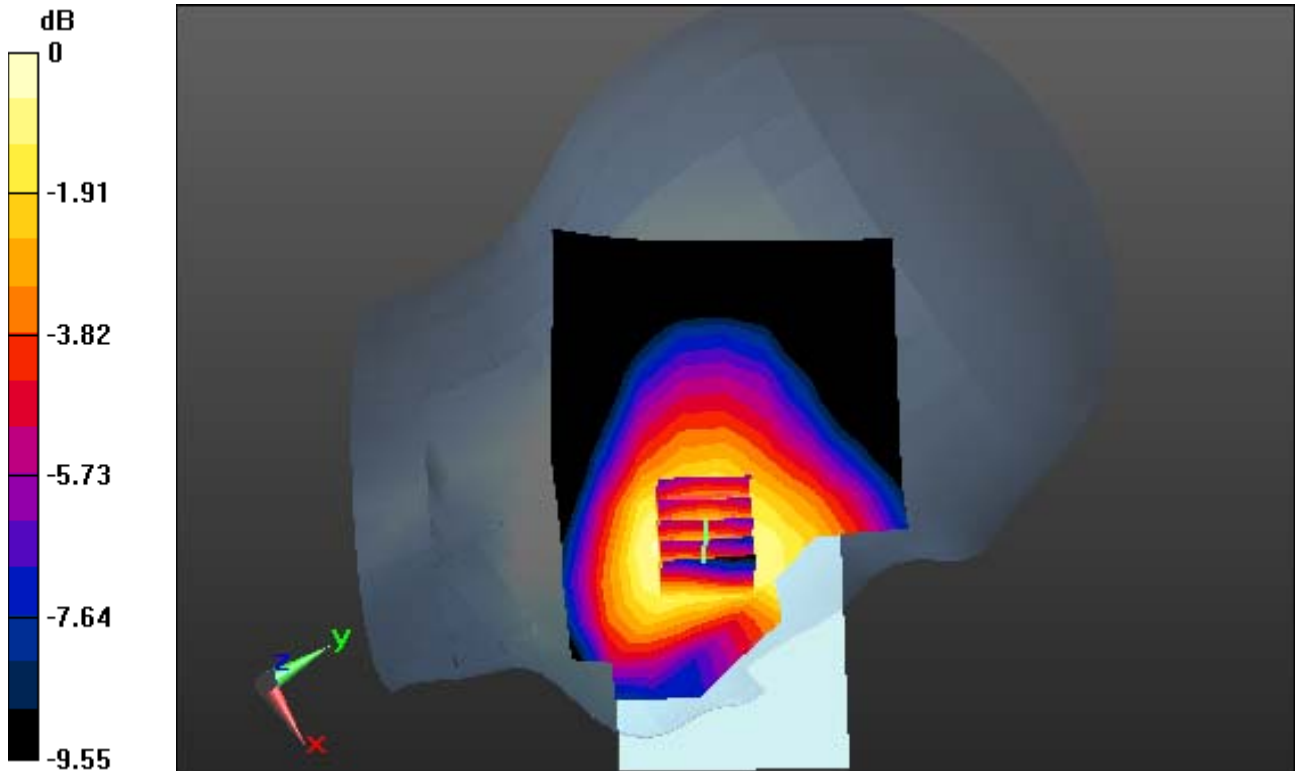
Area Scan (9x14x1): Measurement grid: dx=15mm, dy=15mm

Zoom Scan (5x5x7)/Cube 0: Measurement grid: dx=8mm, dy=8mm, dz=5mm

Power Drift = 0.04 dB

Peak SAR (extrapolated) = 0.301 W/kg

SAR(1 g) = 0.259 W/kg; SAR(10 g) = 0.205 W/kg



0 dB = 0.285 W/kg

DT&C Co., Ltd.

DUT: LM-Q710GX; Type: Bar

Communication System: UID 0, LTE Band 41 (0); Frequency: 2593 MHz; Duty Cycle: 1:1.58
Medium parameters used: $f = 2593$ MHz; $\sigma = 1.991$ S/m; $\epsilon_r = 38.936$; $\rho = 1000$ kg/m³
Phantom section: Left Section

DASY5 Configuration:

Probe: EX3DV4 - SN7337; ConvF(7.48, 7.48, 7.48); Calibrated: 11/28/2017; Electronics: DAE4 Sn1392
Sensor-Surface: 2mm (Mechanical Surface Detection)
Phantom: SAM with CRP v5.0; Type: QD000P40CD; Serial: TP:1837
Measurement SW: DASY52, Version 52.8 (8); SEMCAD X Version 14.6.10 (7331)

Test Date: 2018-03-26; Ambient Temp: 20.9; Tissue Temp: 20.5

Left Touch, LTE Band 41 Ch. 40620, Ant Internal, Standard Battery

Mode : BandWidth 20 MHz, QPSK, RB Size : 1

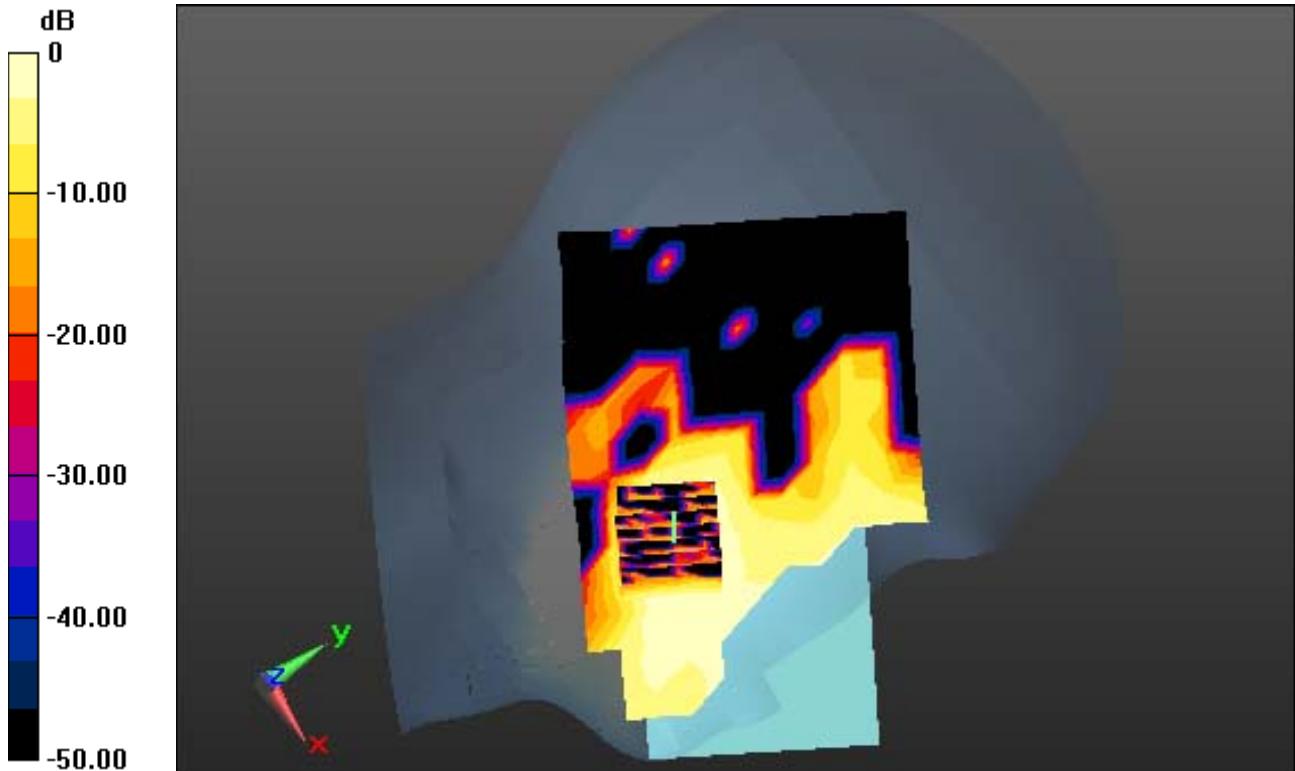
Area Scan (11x17x1): Measurement grid: dx=12mm, dy=12mm

Zoom Scan (8x7x7)/Cube 0: Measurement grid: dx=5mm, dy=5mm, dz=5mm

Power Drift = 0.00 dB

Peak SAR (extrapolated) = 0.104 W/kg

SAR(1 g) = 0.021 W/kg; SAR(10 g) = 0.00902 W/kg



0 dB = 0.0319 W/kg

DT&C Co., Ltd.

DUT: LM-Q710GX; Type: Bar

Communication System: UID 0, W-LAN (0); Frequency: 2412 MHz; Duty Cycle: 1:1
Medium parameters used: $f = 2412$ MHz; $\sigma = 1.809$ S/m; $\epsilon_r = 39.311$; $\rho = 1000$ kg/m³
Phantom section: Right Section

DASY5 Configuration:

Probe: EX3DV4 - SN7337; ConvF(7.7, 7.7, 7.7); Calibrated: 11/28/2017; Electronics: DAE4 Sn1392
Sensor-Surface: 2mm (Mechanical Surface Detection)
Phantom: SAM (20deg probe tilt) with CRP v5.0; Type: QD000P40CD; Serial: TP:1837
Measurement SW: DASY52, Version 52.8 (8); SEMCAD X Version 14.6.10 (7331)

Test Date: 2018-03-27; Ambient Temp: 21.0; Tissue Temp: 20.3

Right Touch, WLAN(2.4G WLAN) Ch. 1, Ant Internal, Standard Battery

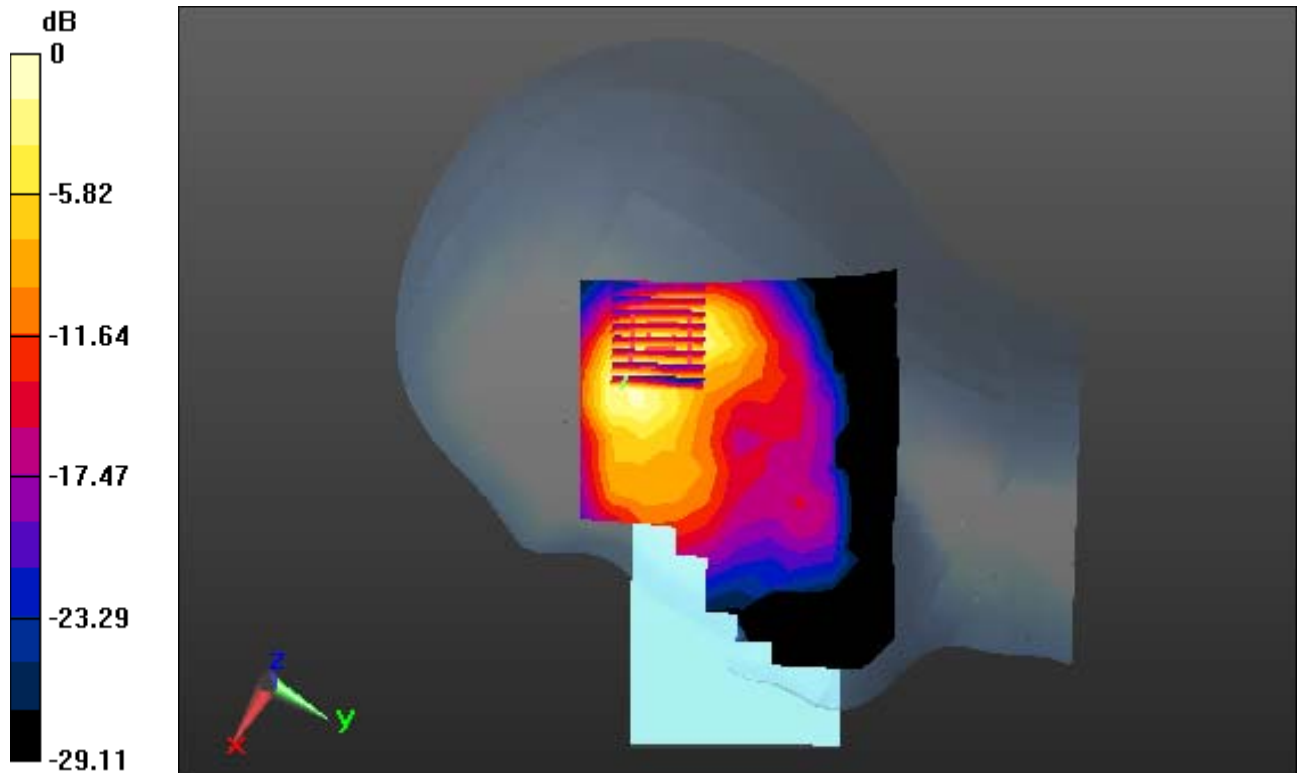
Area Scan (11x17x1): Measurement grid: dx=12mm, dy=12mm

Zoom Scan (8x8x7)/Cube 0: Measurement grid: dx=5mm, dy=5mm, dz=5mm

Power Drift = 0.07 dB

Peak SAR (extrapolated) = 1.98 W/kg

SAR(1 g) = 0.872 W/kg; SAR(10 g) = 0.394 W/kg



0 dB = 1.37 W/kg

DT&C Co., Ltd.

DUT: LM-Q710GX; Type: Bar

Communication System: UID 0, Bluetooth (0); Frequency: 2441 MHz; Duty Cycle: 1:1.3
Medium parameters used: $f = 2441$ MHz; $\sigma = 1.844$ S/m; $\epsilon_r = 39.218$; $\rho = 1000$ kg/m³
Phantom section: Right Section

DASY5 Configuration:

Probe: EX3DV4 - SN7337; ConvF(7.7, 7.7, 7.7); Calibrated: 11/28/2017; Electronics: DAE4 Sn1392
Sensor-Surface: 2mm (Mechanical Surface Detection)
Phantom: SAM with CRP v5.0; Type: QD000P40CD; Serial: TP:1837
Measurement SW: DASY52, Version 52.8 (8); SEMCAD X Version 14.6.10 (7331)

Test Date: 2018-03-27; Ambient Temp: 21.0; Tissue Temp: 20.3

Right Touch, Bluetooth 1 Mbps Ch. 39, Ant Internal, Standard Battery

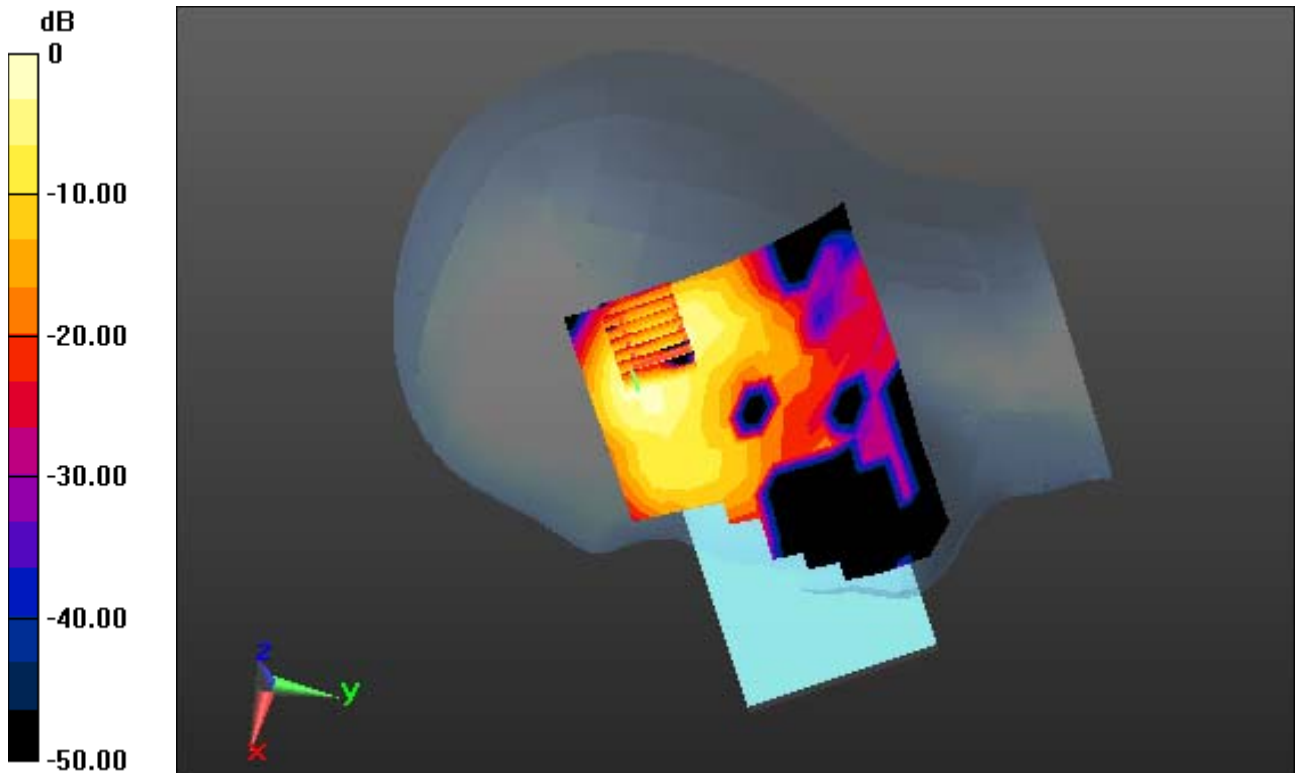
Area Scan (11x17x1): Measurement grid: dx=12mm, dy=12mm

Zoom Scan (7x7x7)/Cube 0: Measurement grid: dx=5mm, dy=5mm, dz=5mm

Power Drift = 0.11 dB

Peak SAR (extrapolated) = 0.306 W/kg

SAR(1 g) = 0.129 W/kg; SAR(10 g) = 0.058 W/kg



0 dB = 0.209 W/kg

DT&C Co., Ltd.

DUT: LM-Q710GX; Type: Bar

Communication System: UID 0, GSM850 (0); Frequency: 836.6 MHz; Duty Cycle: 1:8.3
Medium parameters used: $f = 836.6$ MHz; $\sigma = 0.979$ S/m; $\epsilon_r = 54.937$; $\rho = 1000$ kg/m³
Phantom section: Flat Section

DASY5 Configuration:

Probe: EX3DV4 - SN7337; ConvF(10.29, 10.29, 10.29); Calibrated: 11/28/2017; Electronics: DAE4 Sn1392
Sensor-Surface: 2mm (Mechanical Surface Detection)
Phantom: SAM with CRP v5.0; Type: QD000P40CD; Serial: TP:1837
Measurement SW: DASY52, Version 52.8 (8); SEMCAD X Version 14.6.10 (7331)

Test Date: 2018-03-20; Ambient Temp: 21.0; Tissue Temp: 21.5

1 cm space from Body, Front, GSM850 Ch. 190, Ant. Internal

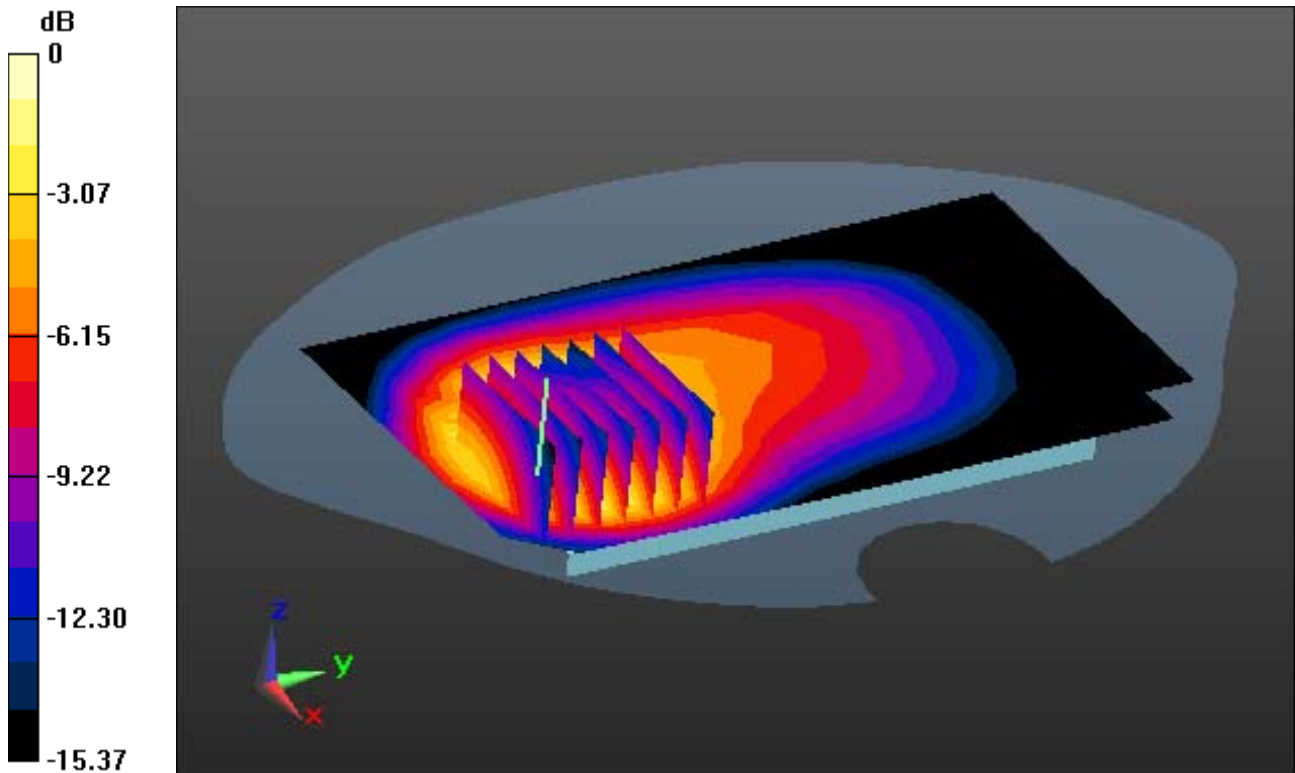
Area Scan (9x15x1): Measurement grid: dx=15mm, dy=15mm

Zoom Scan (7x7x7)/Cube 0: Measurement grid: dx=8mm, dy=8mm, dz=5mm

Power Drift = -0.05 dB

Peak SAR (extrapolated) = 0.700 W/kg

SAR(1 g) = 0.450 W/kg; SAR(10 g) = 0.268 W/kg



0 dB = 0.577 W/kg

DT&C Co., Ltd.

DUT: LM-Q710GX; Type: Bar

Communication System: UID 0, GSM850 4TX (0); Frequency: 836.6 MHz; Duty Cycle: 1:2.075

Medium parameters used: $f = 836.6$ MHz; $\sigma = 0.979$ S/m; $\epsilon_r = 54.937$; $\rho = 1000$ kg/m³

Phantom section: Flat Section

DASY5 Configuration:

Probe: EX3DV4 - SN7337; ConvF(10.29, 10.29, 10.29); Calibrated: 11/28/2017; Electronics: DAE4 Sn1392

Sensor-Surface: 2mm (Mechanical Surface Detection)

Phantom: SAM with CRP v5.0; Type: QD000P40CD; Serial: TP:1837

Measurement SW: DASY52, Version 52.8 (8); SEMCAD X Version 14.6.10 (7331)

Test Date: 2018-03-20; Ambient Temp: 21.0; Tissue Temp: 21.5

1 cm space from Body, Front, GSM850 GPRS 4 Tx, Ch. 190, Ant. Internal

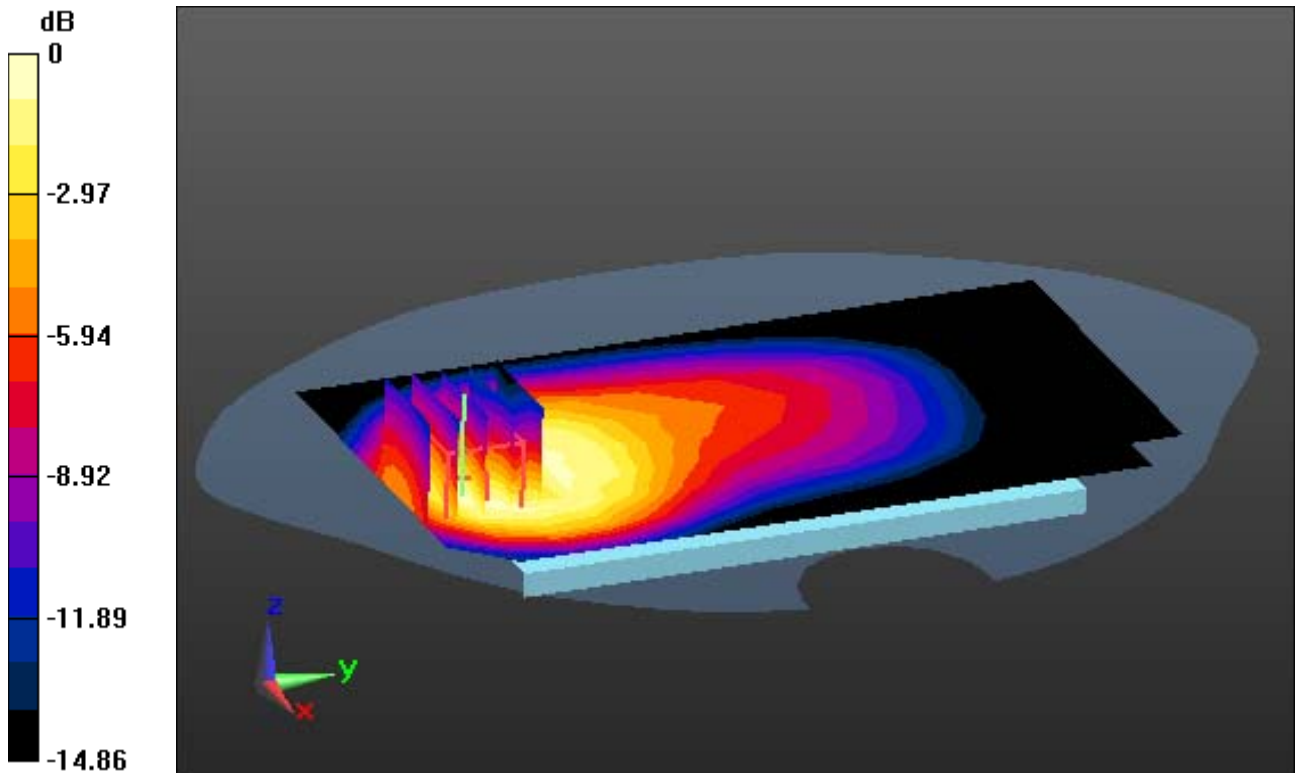
Area Scan (9x15x1): Measurement grid: dx=15mm, dy=15mm

Zoom Scan (5x5x7)/Cube 0: Measurement grid: dx=8mm, dy=8mm, dz=5mm

Power Drift = -0.01 dB

Peak SAR (extrapolated) = 1.05 W/kg

SAR(1 g) = 0.651 W/kg; SAR(10 g) = 0.385 W/kg



0 dB = 0.881 W/kg

DT&C Co., Ltd.

DUT: LM-Q710GX; Type: Bar

Communication System: UID 0, PCS 1900 (0); Frequency: 1880 MHz; Duty Cycle: 1:8.3
Medium parameters used: $f = 1880$ MHz; $\sigma = 1.523$ S/m; $\epsilon_r = 53.153$; $\rho = 1000$ kg/m³
Phantom section: Flat Section

DASY5 Configuration:

Probe: EX3DV4 - SN7337; ConvF(8.2, 8.2, 8.2); Calibrated: 11/28/2017; Electronics: DAE4 Sn1392
Sensor-Surface: 2mm (Mechanical Surface Detection)
Phantom: SAM with CRP v5.0; Type: QD000P40CD; Serial: TP:1837
Measurement SW: DASY52, Version 52.8 (8); SEMCAD X Version 14.6.10 (7331)

Test Date: 2018-03-23; Ambient Temp: 20.8; Tissue Temp: 21.2

1 cm space from Body, Front, PCS1900 Ch. 661, Ant. Internal

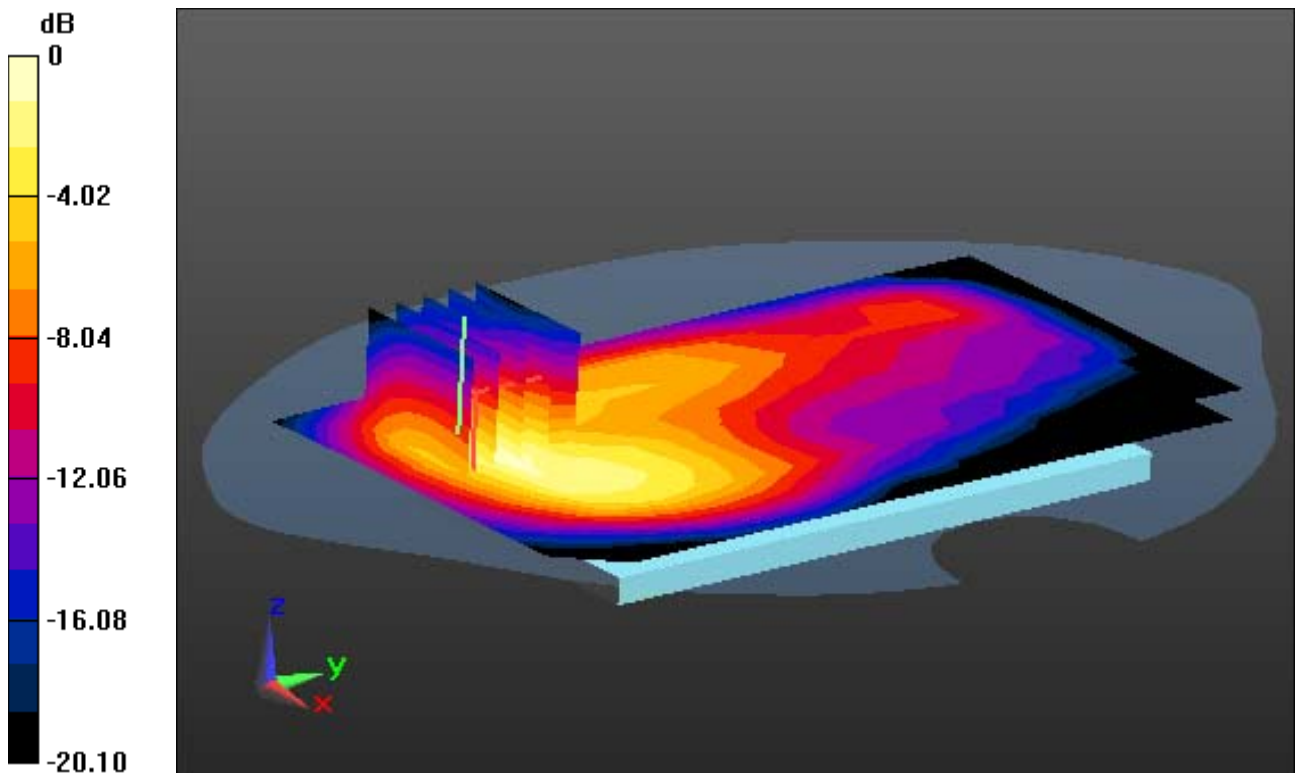
Area Scan (9x15x1): Measurement grid: dx=15mm, dy=15mm

Zoom Scan (6x5x7)/Cube 0: Measurement grid: dx=8mm, dy=8mm, dz=5mm

Power Drift = 0.01 dB

Peak SAR (extrapolated) = 0.274 W/kg

SAR(1 g) = 0.149 W/kg; SAR(10 g) = 0.079 W/kg



0 dB = 0.214 W/kg

DT&C Co., Ltd.

DUT: LM-Q710GX; Type: Bar

Communication System: UID 0, PCS 1900 4TX (0); Frequency: 1880 MHz; Duty Cycle: 1:2.075
Medium parameters used: $f = 1880$ MHz; $\sigma = 1.523$ S/m; $\epsilon_r = 53.153$; $\rho = 1000$ kg/m³
Phantom section: Flat Section

DASY5 Configuration:

Probe: EX3DV4 - SN7337; ConvF(8.2, 8.2, 8.2); Calibrated: 11/28/2017; Electronics: DAE4 Sn1392
Sensor-Surface: 2mm (Mechanical Surface Detection)
Phantom: SAM with CRP v5.0; Type: QD000P40CD; Serial: TP:1837
Measurement SW: DASY52, Version 52.8 (8); SEMCAD X Version 14.6.10 (7331)

Test Date: 2018-03-23; Ambient Temp: 20.8; Tissue Temp: 21.2

1 cm space from Body, Front, PCS1900 GPRS 4Tx, Ch. 661, Ant. Internal

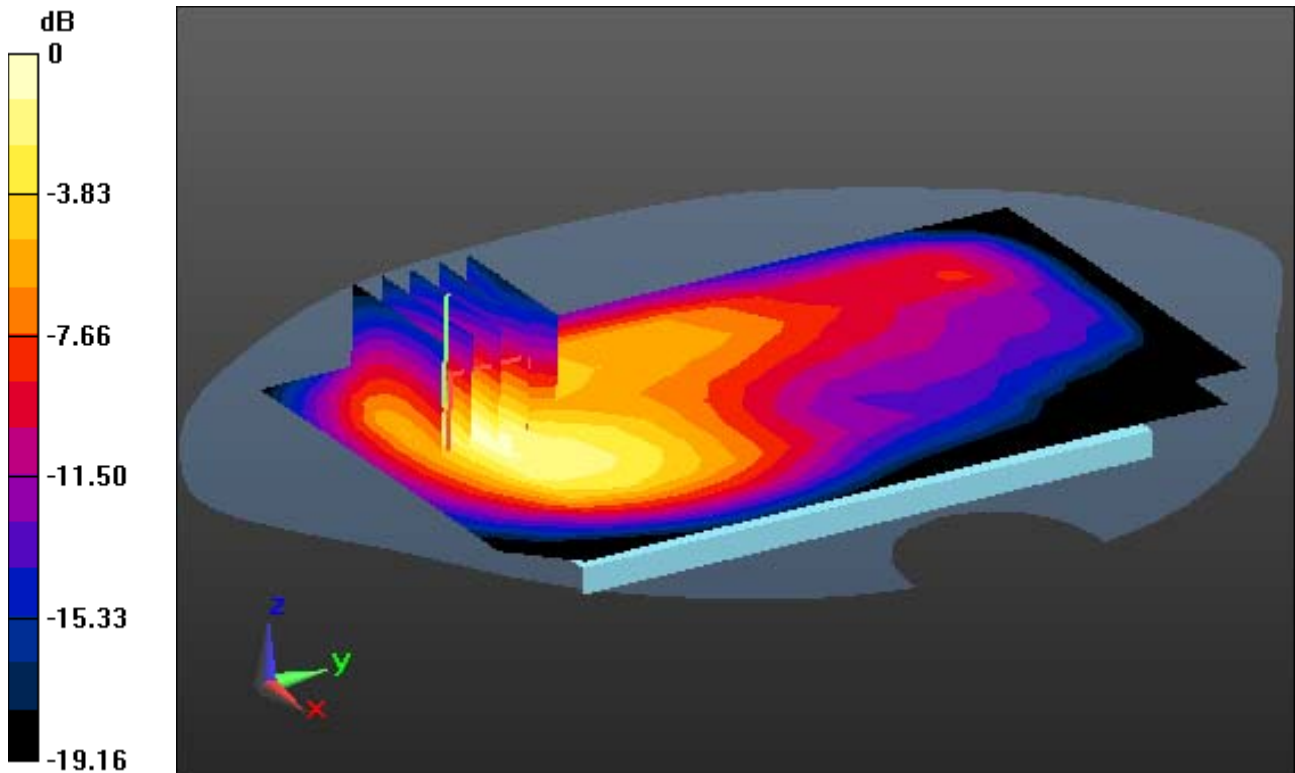
Area Scan (9x15x1): Measurement grid: dx=15mm, dy=15mm

Zoom Scan (6x5x7)/Cube 0: Measurement grid: dx=8mm, dy=8mm, dz=5mm

Power Drift = -0.01 dB

Peak SAR (extrapolated) = 0.566 W/kg

SAR(1 g) = 0.307 W/kg; SAR(10 g) = 0.163 W/kg



0 dB = 0.437 W/kg

DT&C Co., Ltd.

DUT: LM-Q710GX; Type: Bar

Communication System: UID 0, WCDMA 850 (0); Frequency: 836.6 MHz; Duty Cycle: 1:1
Medium parameters used: $f = 836.6$ MHz; $\sigma = 0.979$ S/m; $\epsilon_r = 54.937$; $\rho = 1000$ kg/m³
Phantom section: Flat Section

DASY5 Configuration:

Probe: EX3DV4 - SN7337; ConvF(10.29, 10.29, 10.29); Calibrated: 11/28/2017; Electronics: DAE4 Sn1392
Sensor-Surface: 2mm (Mechanical Surface Detection)
Phantom: SAM with CRP v5.0; Type: QD000P40CD; Serial: TP:1837
Measurement SW: DASY52, Version 52.8 (8); SEMCAD X Version 14.6.10 (7331)

Test Date: 2018-03-20; Ambient Temp: 21.0; Tissue Temp: 21.5

1 cm space from Body, Front, WCDMA850 Ch. 4183, Ant. Internal

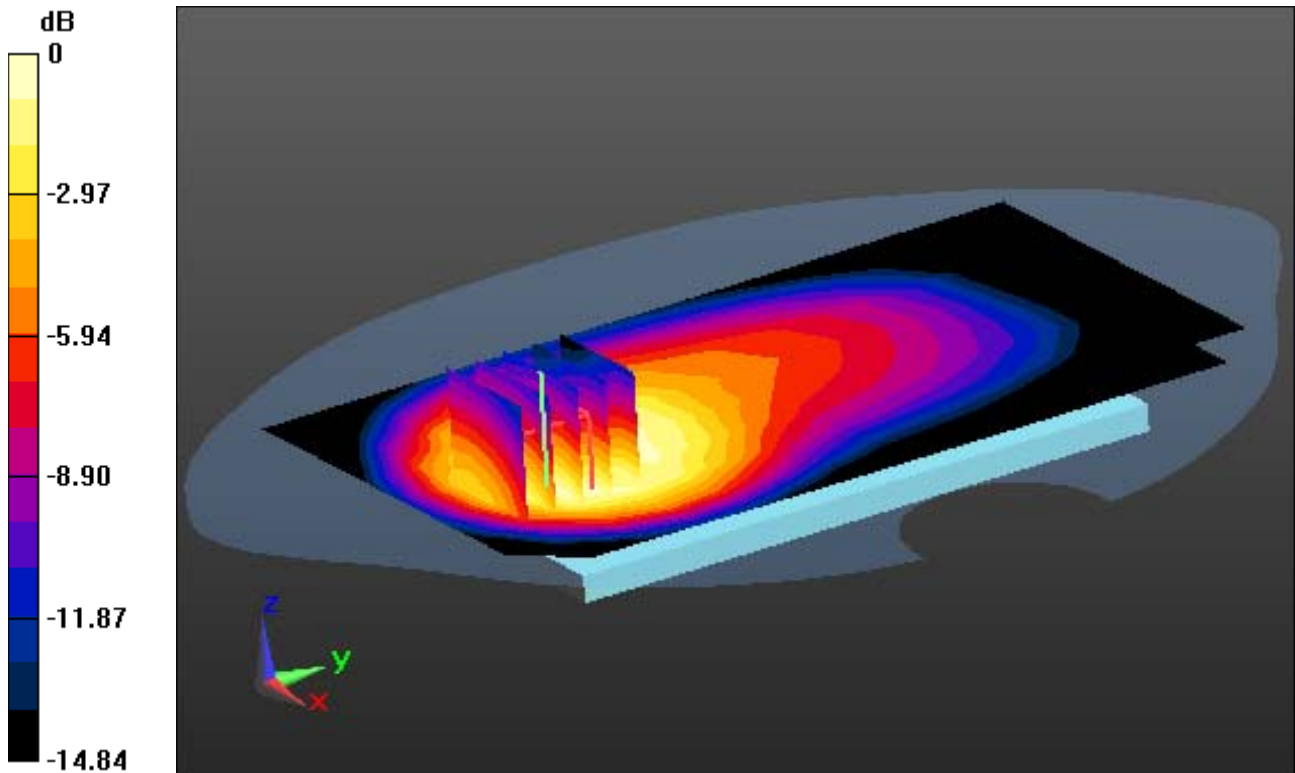
Area Scan (9x15x1): Measurement grid: dx=15mm, dy=15mm

Zoom Scan (5x5x7)/Cube 0: Measurement grid: dx=8mm, dy=8mm, dz=5mm

Power Drift = -0.01 dB

Peak SAR (extrapolated) = 0.995 W/kg

SAR(1 g) = 0.619 W/kg; SAR(10 g) = 0.364 W/kg



0 dB = 0.809 W/kg

DT&C Co., Ltd.

DUT: LM-Q710GX; Type: Bar

Communication System: UID 0, WCDMA 1900 (0); Frequency: 1880 MHz; Duty Cycle: 1:1
Medium parameters used: $f = 1880$ MHz; $\sigma = 1.523$ S/m; $\epsilon_r = 53.153$; $\rho = 1000$ kg/m³
Phantom section: Flat Section

DASY5 Configuration:

Probe: EX3DV4 - SN7337; ConvF(8.2, 8.2, 8.2); Calibrated: 11/28/2017; Electronics: DAE4 Sn1392
Sensor-Surface: 2mm (Mechanical Surface Detection)
Phantom: SAM with CRP v5.0; Type: QD000P40CD; Serial: TP:1837
Measurement SW: DASY52, Version 52.8 (8); SEMCAD X Version 14.6.10 (7331)

Test Date: 2018-03-23; Ambient Temp: 20.8; Tissue Temp: 21.2

1 cm space from Body, Rear, WCDMA1900 Ch. 9400, Ant. Internal

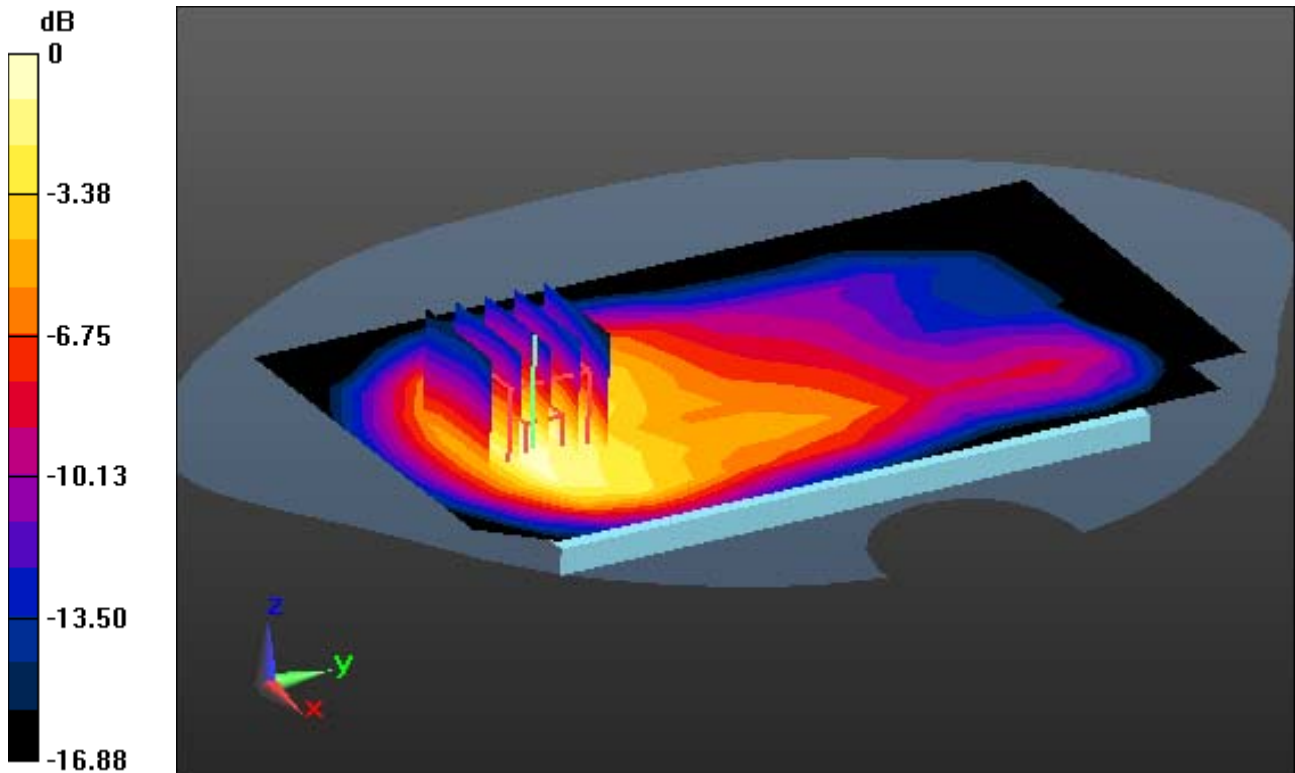
Area Scan (9x15x1): Measurement grid: dx=15mm, dy=15mm

Zoom Scan (5x5x7)/Cube 0: Measurement grid: dx=8mm, dy=8mm, dz=5mm

Power Drift = -0.03 dB

Peak SAR (extrapolated) = 0.357 W/kg

SAR(1 g) = 0.221 W/kg; SAR(10 g) = 0.130 W/kg



0 dB = 0.294 W/kg

DT&C Co., Ltd

DUT: LM-Q710GX; Type: Bar

Communication System: UID 0, LTE Band 5(FCC) (0); Frequency: 836.5 MHz; Duty Cycle: 1:1
Medium parameters used: $f = 836.5$ MHz; $\sigma = 0.983$ S/m; $\epsilon_r = 55.087$; $\rho = 1000$ kg/m³
Phantom section: Flat Section

DASY5 Configuration:

Probe: EX3DV4 - SN7337; ConvF(10.29, 10.29, 10.29); Calibrated: 11/28/2017; Electronics: DAE4 Sn1392
Sensor-Surface: 2mm (Mechanical Surface Detection)
Phantom: SAM with CRP v5.0; Type: QD000P40CD; Serial: TP:1837
Measurement SW: DASY52, Version 52.8 (8); SEMCAD X Version 14.6.10 (7331)

Test Date: 2018-03-21; Ambient Temp: 20.8; Tissue Temp: 21.4

1 cm space from Body, Rear, LTE Band 5 Ch. 20525, Ant Internal

Mode : BandWidth 10 MHz, QPSK, RB Size : 1

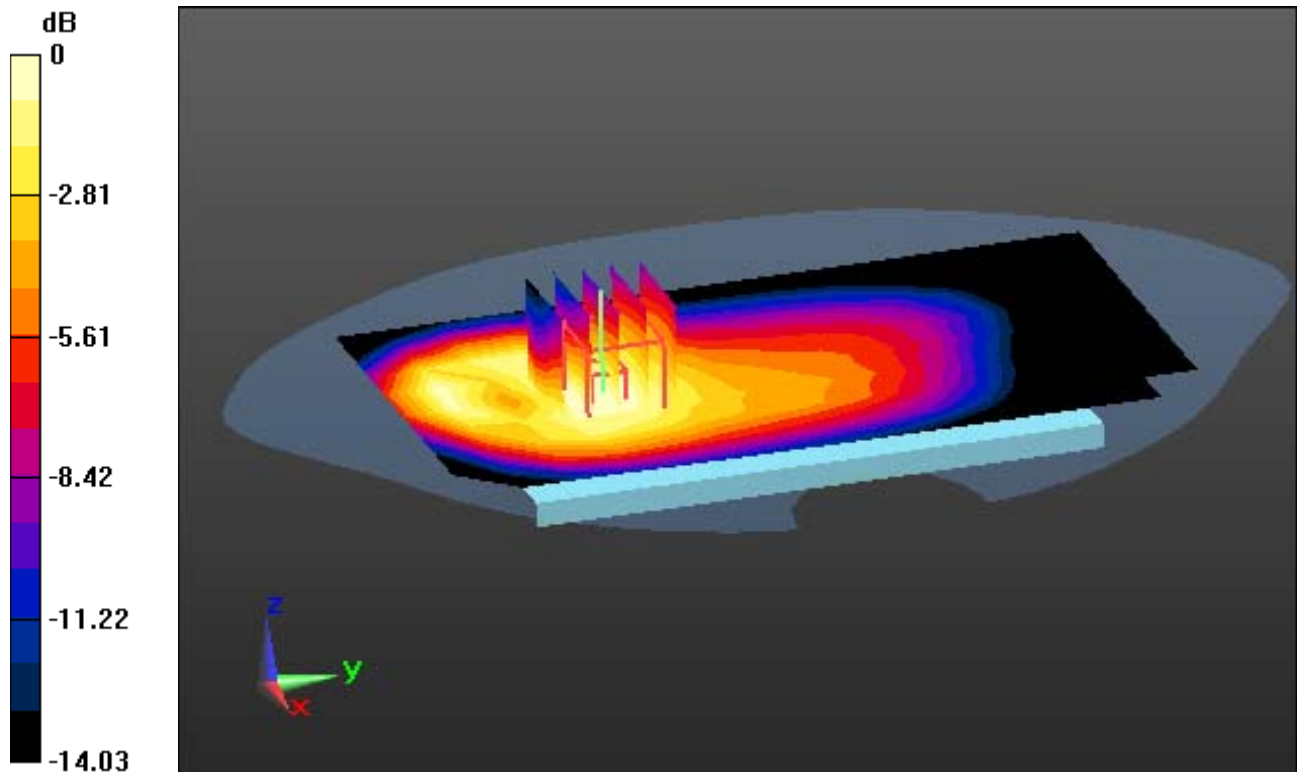
Area Scan (9x15x1): Measurement grid: dx=15mm, dy=15mm

Zoom Scan (5x5x7)/Cube 0: Measurement grid: dx=8mm, dy=8mm, dz=5mm

Power Drift = 0.02 dB

Peak SAR (extrapolated) = 1.13 W/kg

SAR(1 g) = 0.818 W/kg; SAR(10 g) = 0.568 W/kg



0 dB = 0.982 W/kg

DT&C Co., Ltd

DUT: LM-Q710GX; Type: Bar

Communication System: UID 0, LTE Band 41 (0); Frequency: 2593 MHz; Duty Cycle: 1:1.58
Medium parameters used: $f = 2593$ MHz; $\sigma = 2.134$ S/m; $\epsilon_r = 52.395$; $\rho = 1000$ kg/m³
Phantom section: Flat Section

DASY5 Configuration:

Probe: EX3DV4 - SN7337; ConvF(7.52, 7.52, 7.52); Calibrated: 11/28/2017; Electronics: DAE4 Sn1392
Sensor-Surface: 2mm (Mechanical Surface Detection)
Phantom: SAM with CRP v5.0; Type: QD000P40CD; Serial: TP:1837
Measurement SW: DASY52, Version 52.8 (8); SEMCAD X Version 14.6.10 (7331)

Test Date: 2018-03-26; Ambient Temp: 20.9; Tissue Temp: 20.6

1 cm space from Body, Front, LTE Band 41 Ch. 40620, Ant Internal

Mode : BandWidth 20 MHz, QPSK, RB Size : 1

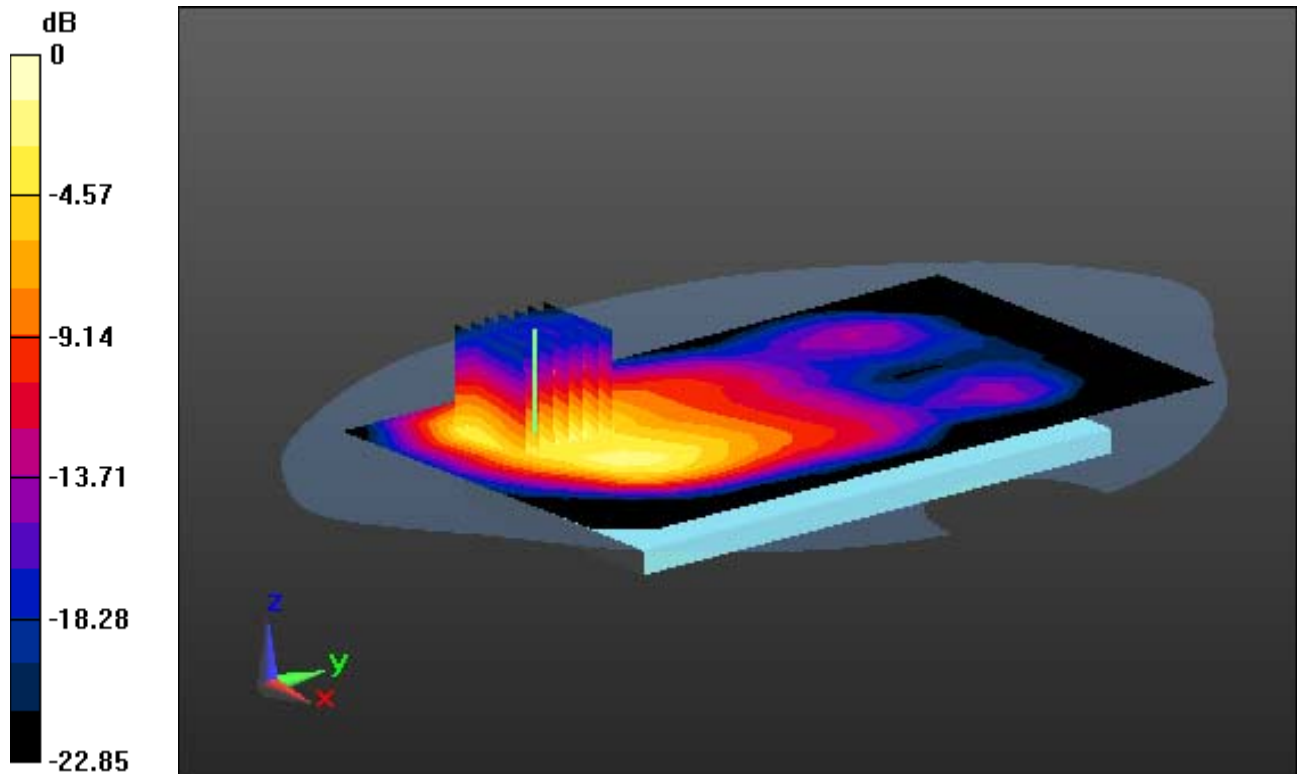
Area Scan (11x18x1): Measurement grid: dx=12mm, dy=12mm

Zoom Scan (7x7x7)/Cube 0: Measurement grid: dx=5mm, dy=5mm, dz=5mm

Power Drift = 0.06 dB

Peak SAR (extrapolated) = 0.638 W/kg

SAR(1 g) = 0.314 W/kg; SAR(10 g) = 0.155 W/kg



0 dB = 0.467 W/kg

DT&C Co., Ltd.

DUT: LM-Q710GX; Type: Bar

Communication System: UID 0, W-LAN (0); Frequency: 2437 MHz; Duty Cycle: 1:1
Medium parameters used: $f = 2437$ MHz; $\sigma = 1.897$ S/m; $\epsilon_r = 51.333$; $\rho = 1000$ kg/m³
Phantom section: Flat Section

DASY5 Configuration:

Probe: EX3DV4 - SN7337; ConvF(7.88, 7.88, 7.88); Calibrated: 11/28/2017; Electronics: DAE4 Sn1392
Sensor-Surface: 2mm (Mechanical Surface Detection)
Phantom: SAM with CRP v5.0; Type: QD000P40CD; Serial: TP:1837
Measurement SW: DASY52, Version 52.8 (8); SEMCAD X Version 14.6.10 (7331)

Test Date: 2018-03-28; Ambient Temp: 21.1; Tissue Temp: 21.4

1 cm space from Body, Rear, WLAN(2.4G 802.11b), Ch. 6, Ant. Internal

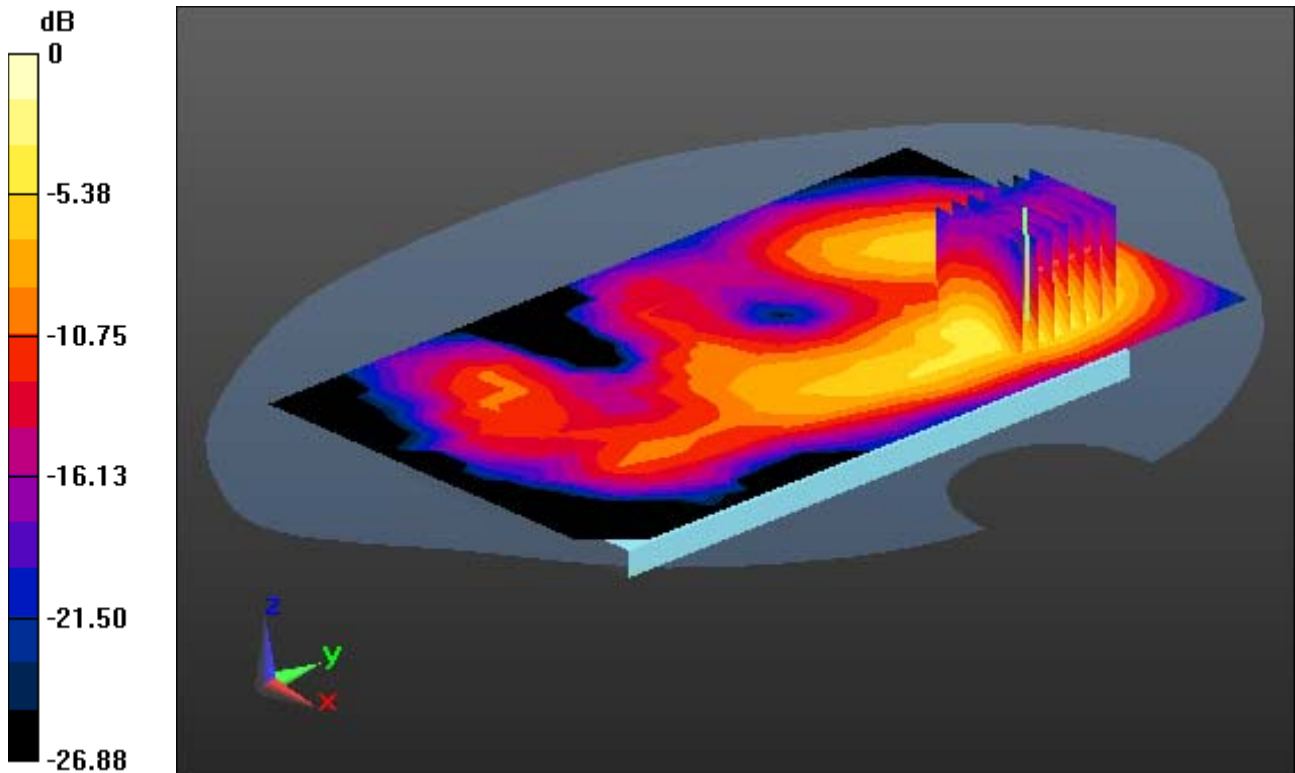
Area Scan (11x18x1): Measurement grid: dx=12mm, dy=12mm

Zoom Scan (7x7x7)/Cube 0: Measurement grid: dx=5mm, dy=5mm, dz=5mm

Power Drift = -0.04 dB

Peak SAR (extrapolated) = 0.471 W/kg

SAR(1 g) = 0.236 W/kg; SAR(10 g) = 0.105 W/kg



0 dB = 0.359 W/kg

DT&C Co., Ltd.

DUT: LM-Q710GX; Type: Bar

Communication System: UID 0, Bluetooth (0); Frequency: 2441 MHz; Duty Cycle: 1:1.3
Medium parameters used: $f = 2441$ MHz; $\sigma = 1.901$ S/m; $\epsilon_r = 51.32$; $\rho = 1000$ kg/m³
Phantom section: Flat Section

DASY5 Configuration:

Probe: EX3DV4 - SN7337; ConvF(7.88, 7.88, 7.88); Calibrated: 11/28/2017; Electronics: DAE4 Sn1392
Sensor-Surface: 2mm (Mechanical Surface Detection)
Phantom: SAM with CRP v5.0; Type: QD000P40CD; Serial: TP:1837
Measurement SW: DASY52, Version 52.8 (8); SEMCAD X Version 14.6.10 (7331)

Test Date: 2018-03-28; Ambient Temp: 21.1; Tissue Temp: 21.4

1 cm space from Body, Rear, Bluetooth 1Mbps Ch. 39, Ant. Internal

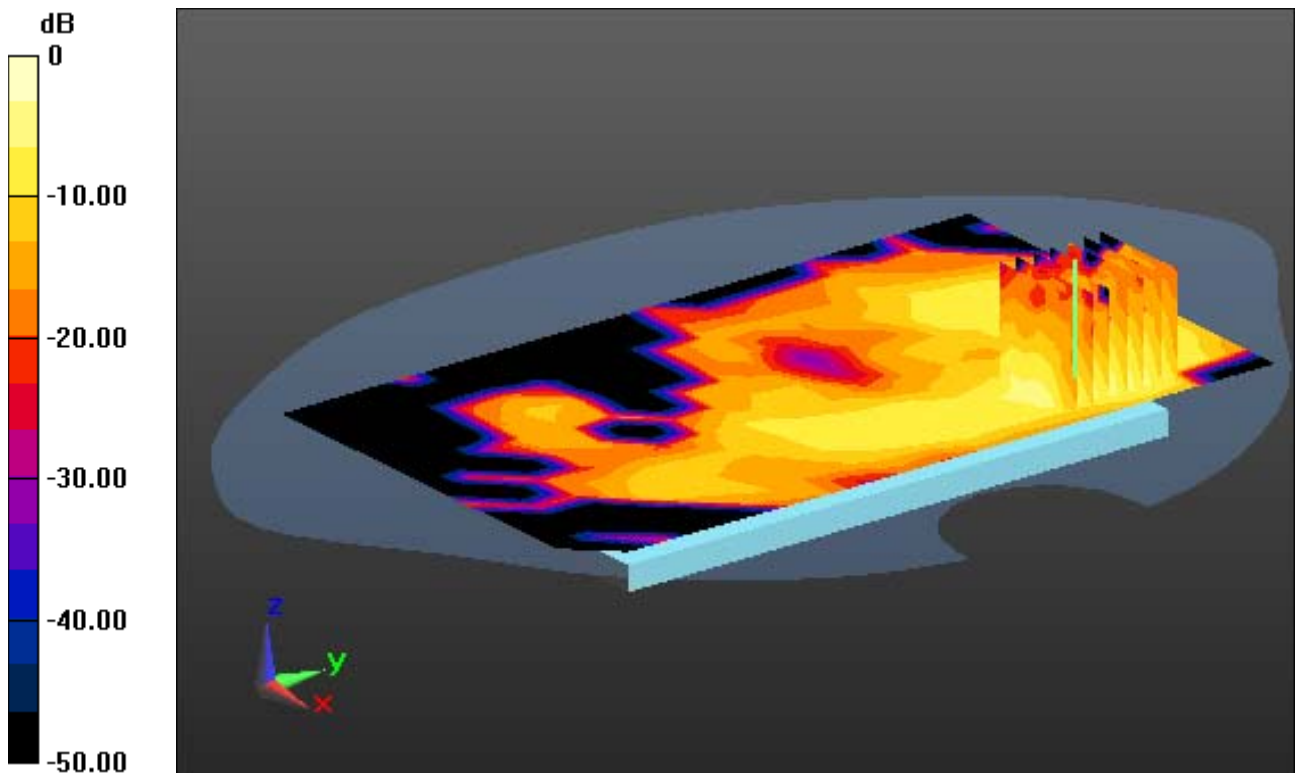
Area Scan (11x18x1): Measurement grid: dx=12mm, dy=12mm

Zoom Scan (7x7x7)/Cube 0: Measurement grid: dx=5mm, dy=5mm, dz=5mm

Power Drift = -0.17 dB

Peak SAR (extrapolated) = 0.0700 W/kg

SAR(1 g) = 0.035 W/kg; SAR(10 g) = 0.016 W/kg



0 dB = 0.0514 W/kg

DT&C Co., Ltd.

DUT: LM-Q710GX; Type: Bar

Communication System: UID 0, PCS 1900 4TX (0); Frequency: 1880 MHz; Duty Cycle: 1:2.075

Medium parameters used: $f = 1880$ MHz; $\sigma = 1.523$ S/m; $\epsilon_r = 53.153$; $\rho = 1000$ kg/m³

Phantom section: Flat Section

DASY5 Configuration:

Probe: EX3DV4 - SN7337; ConvF(8.2, 8.2, 8.2); Calibrated: 11/28/2017; Electronics: DAE4 Sn1392

Sensor-Surface: 2mm (Mechanical Surface Detection)

Phantom: SAM with CRP v5.0; Type: QD000P40CD; Serial: TP:1837

Measurement SW: DASY52, Version 52.8 (8); SEMCAD X Version 14.6.10 (7331)

Test Date: 2018-03-23; Ambient Temp: 20.8; Tissue Temp: 21.2

1 cm space from Body, Bottom, PCS1900 GPRS 4Tx, PCS1900 Ch. 661, Ant. Internal

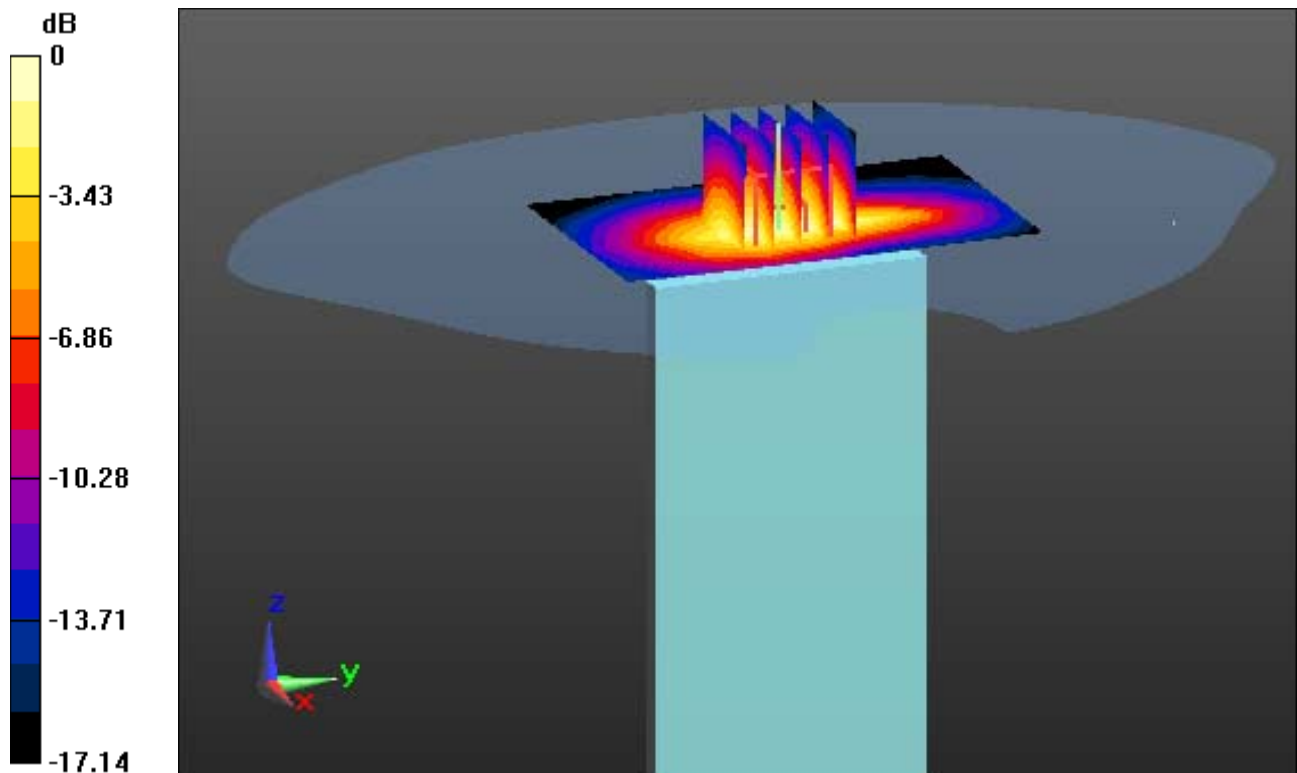
Area Scan (6x9x1): Measurement grid: dx=15mm, dy=15mm

Zoom Scan (5x5x7)/Cube 0: Measurement grid: dx=8mm, dy=8mm, dz=5mm

Power Drift = -0.12 dB

Peak SAR (extrapolated) = 1.17 W/kg

SAR(1 g) = 0.707 W/kg; SAR(10 g) = 0.402 W/kg



0 dB = 0.957 W/kg

DT&C Co., Ltd.

DUT: LM-Q710GX; Type: Bar

Communication System: UID 0, WCDMA 1900 (0); Frequency: 1852.4 MHz; Duty Cycle: 1:1
Medium parameters used: $f = 1852.4$ MHz; $\sigma = 1.498$ S/m; $\epsilon_r = 53.235$; $\rho = 1000$ kg/m³
Phantom section: Flat Section

DASY5 Configuration:

Probe: EX3DV4 - SN7337; ConvF(8.2, 8.2, 8.2); Calibrated: 11/28/2017; Electronics: DAE4 Sn1392
Sensor-Surface: 2mm (Mechanical Surface Detection)
Phantom: SAM with CRP v5.0; Type: QD000P40CD; Serial: TP:1837
Measurement SW: DASY52, Version 52.8 (8); SEMCAD X Version 14.6.10 (7331)

Test Date: 2018-03-23; Ambient Temp: 20.8; Tissue Temp: 21.2

1 cm space from Body, Bottom, WCDMA1900 Ch. 9400, Ant. Internal

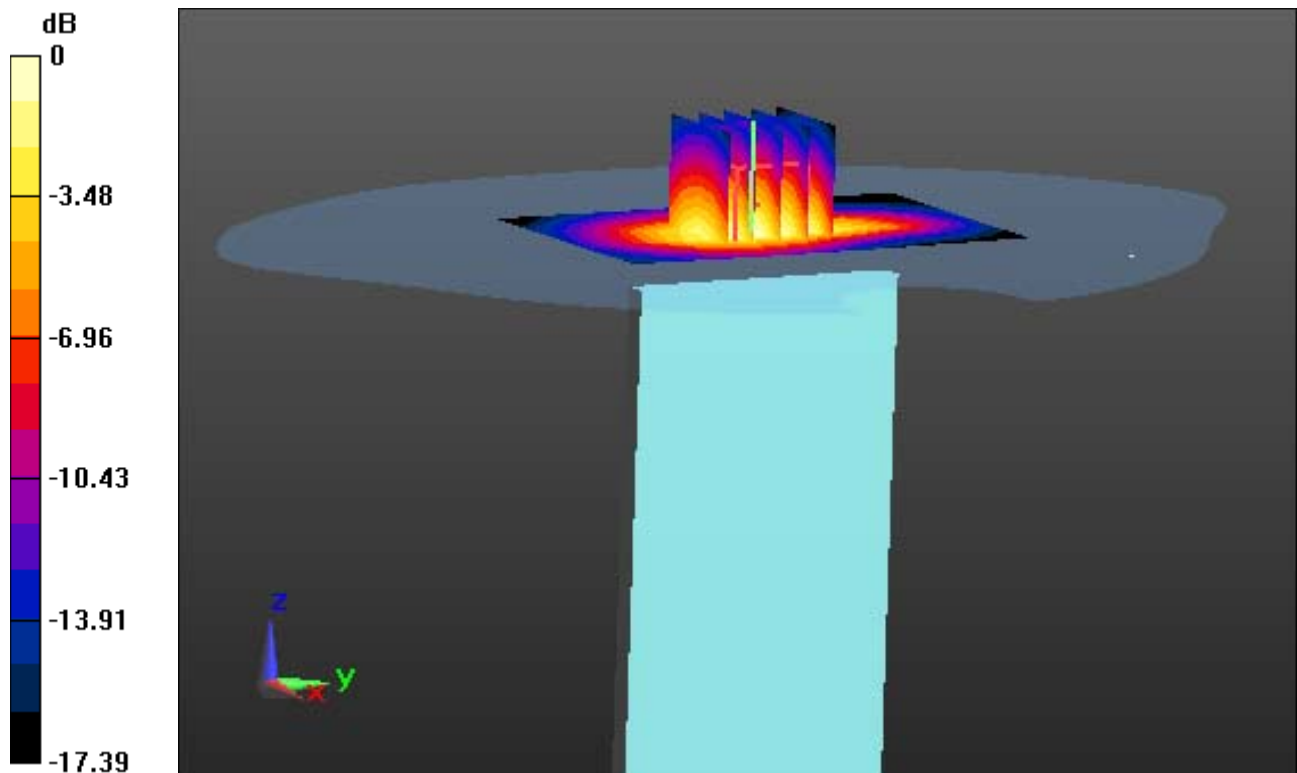
Area Scan (6x9x1): Measurement grid: dx=15mm, dy=15mm

Zoom Scan (5x5x7)/Cube 0: Measurement grid: dx=8mm, dy=8mm, dz=5mm

Power Drift = -0.01 dB

Peak SAR (extrapolated) = 0.539 W/kg

SAR(1 g) = 0.324 W/kg; SAR(10 g) = 0.183 W/kg



0 dB = 0.442 W/kg

DT&C Co., Ltd.

DUT: LM-Q710GX; Type: Bar

Communication System: UID 0, W-LAN (0); Frequency: 2437 MHz; Duty Cycle: 1:1
Medium parameters used: $f = 2437$ MHz; $\sigma = 1.897$ S/m; $\epsilon_r = 51.333$; $\rho = 1000$ kg/m³
Phantom section: Flat Section

DASY5 Configuration:

Probe: EX3DV4 - SN7337; ConvF(7.88, 7.88, 7.88); Calibrated: 11/28/2017; Electronics: DAE4 Sn1392
Sensor-Surface: 2mm (Mechanical Surface Detection)
Phantom: SAM with CRP v5.0; Type: QD000P40CD; Serial: TP:1837
Measurement SW: DASY52, Version 52.8 (8); SEMCAD X Version 14.6.10 (7331)

Test Date: 2018-03-28; Ambient Temp: 21.1; Tissue Temp: 21.4

1 cm space from Body, Left, WLAN(2.4G 802.11b) Ch. 6, Ant. Internal

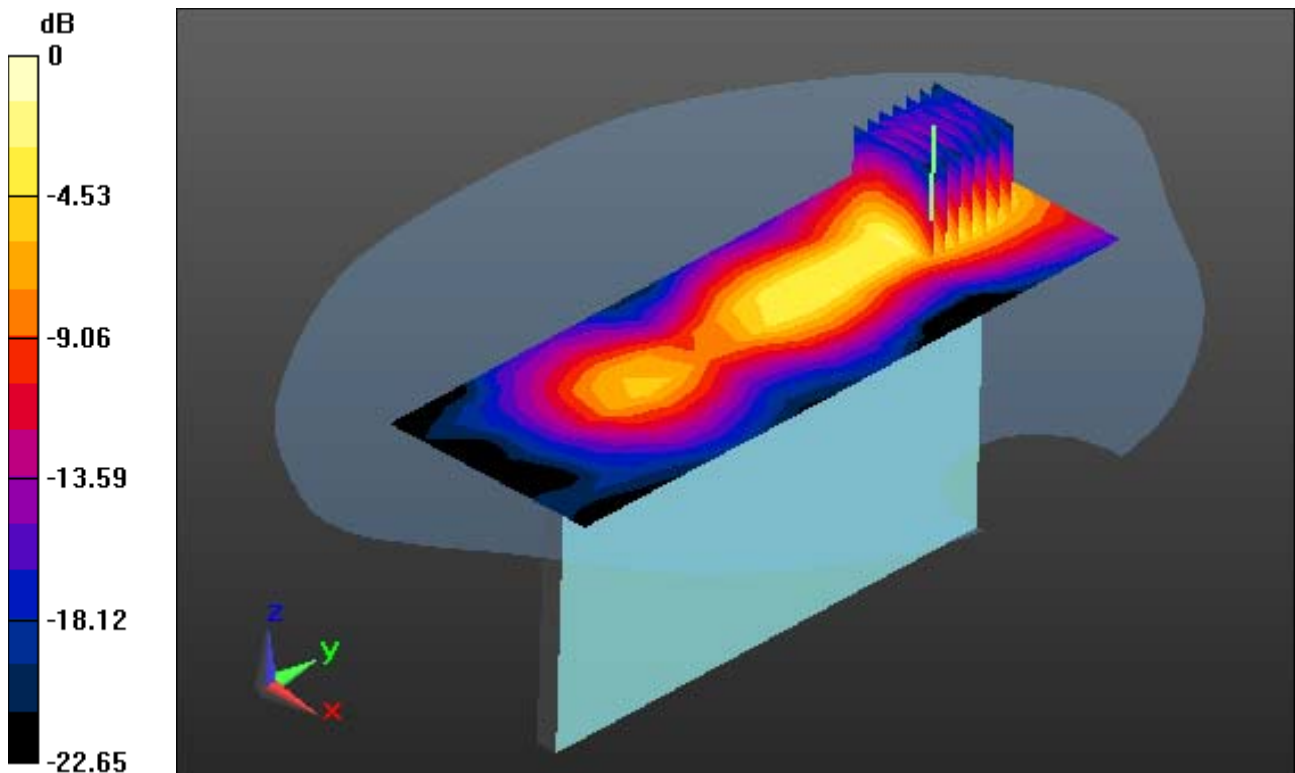
Area Scan (7x18x1): Measurement grid: dx=12mm, dy=12mm

Zoom Scan (7x7x7)/Cube 0: Measurement grid: dx=5mm, dy=5mm, dz=5mm

Power Drift = -0.19 dB

Peak SAR (extrapolated) = 0.555 W/kg

SAR(1 g) = 0.288 W/kg; SAR(10 g) = 0.141 W/kg



0 dB = 0.427 W/kg

DT&C Co., Ltd.

DUT: LM-Q710GX; Type: Bar

Communication System: UID 0, Bluetooth (0); Frequency: 2441 MHz; Duty Cycle: 1:1.3
Medium parameters used: $f = 2441$ MHz; $\sigma = 1.901$ S/m; $\epsilon_r = 51.32$; $\rho = 1000$ kg/m³
Phantom section: Flat Section

DASY5 Configuration:

Probe: EX3DV4 - SN7337; ConvF(7.88, 7.88, 7.88); Calibrated: 11/28/2017; Electronics: DAE4 Sn1392
Sensor-Surface: 2mm (Mechanical Surface Detection)
Phantom: SAM with CRP v5.0; Type: QD000P40CD; Serial: TP:1837
Measurement SW: DASY52, Version 52.8 (8); SEMCAD X Version 14.6.10 (7331)

Test Date: 2018-03-28; Ambient Temp: 21.1; Tissue Temp: 21.4

1 cm space from Body, Left, Bluetooth 1Mbps Ch. 39, Ant. Internal

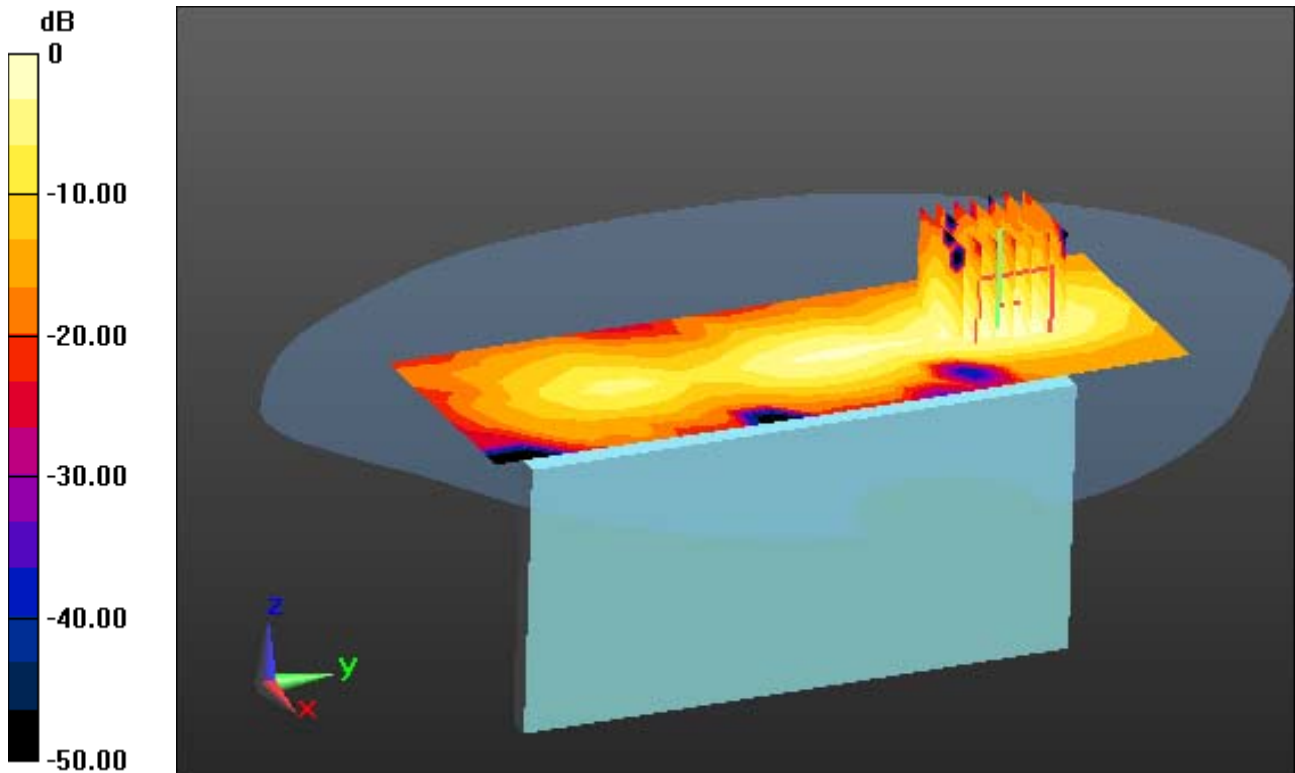
Area Scan (7x18x1): Measurement grid: dx=12mm, dy=12mm

Zoom Scan (7x7x7)/Cube 0: Measurement grid: dx=5mm, dy=5mm, dz=5mm

Power Drift = 0.16 dB

Peak SAR (extrapolated) = 0.0840 W/kg

SAR(1 g) = 0.045 W/kg; SAR(10 g) = 0.022 W/kg



0 dB = 0.0644 W/kg