

Dipole Validation Plots

DIGITAL EMC CO., LTD

DUT: Dipole 835 MHz; Type: D835V2; Serial: D835V2 - SN:464

Communication System: CW; Frequency: 835 MHz; Duty Cycle: 1:1

Medium parameters used: $f = 835$ MHz; $\sigma = 0.879$ mho/m; $\epsilon_r = 40.212$; $\rho = 1000$ kg/m³

Phantom section: Flat Section

DASY5 Configuration:

Probe: EX3DV4 - SN3866; ConvF(8.98, 8.98, 8.98); Calibrated: 2012-06-20; ; Electronics: DAE4 Sn1335

Phantom: SAM with CRP_20120521; Type: SAM; Serial: 1679

Measurement SW: DASY52, Version 52.8 (2); SEMCAD X Version 14.6.6 (6477)

Test Date: 2012-08-31; Ambient Temp: 22.4; Tissue Temp: 22.7

Dipole Validation

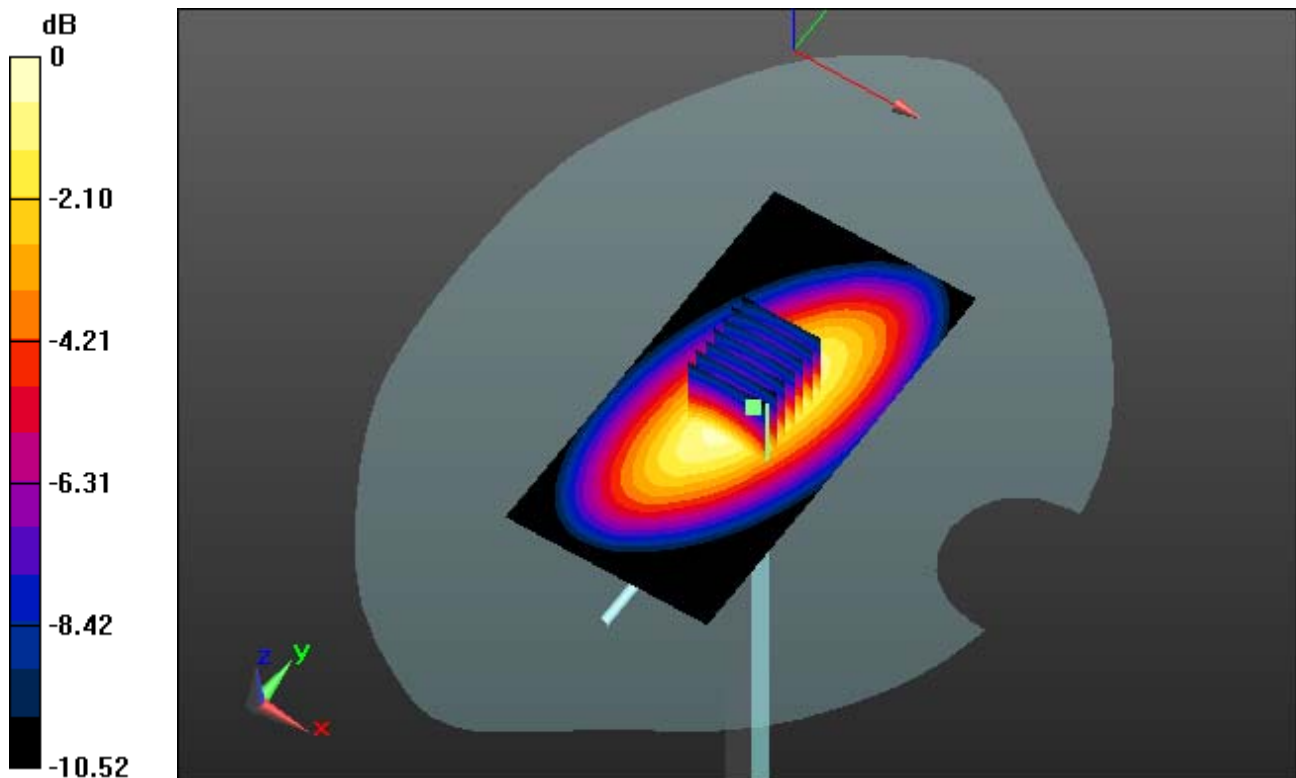
Area Scan (51x101x1): Measurement grid: dx=15mm, dy=15mm

Zoom Scan (7x7x7)/Cube 0: Measurement grid: dx=5mm, dy=5mm, dz=5mm

Power Drift = -0.10 dB

Peak SAR (extrapolated) = 3.627 mW/g

SAR(1 g) = 2.39 W/kg; SAR(10 g) = 1.57 W/kg



0 dB = 2.91 mW/g

DIGITAL EMC CO., LTD

DUT: Dipole 835 MHz; Type: D835V2; Serial: D835V2 - SN:464

Communication System: CW; Frequency: 835 MHz; Duty Cycle: 1:1

Medium parameters used: $f = 835$ MHz; $\sigma = 0.879$ mho/m; $\epsilon_r = 40.212$; $\rho = 1000$ kg/m³

Phantom section: Flat Section

DASY5 Configuration:

Probe: EX3DV4 - SN3866; ConvF(8.98, 8.98, 8.98); Calibrated: 2012-06-20; ; Electronics: DAE4 Sn1335

Phantom: SAM with CRP_20120521; Type: SAM; Serial: 1679

Measurement SW: DASY52, Version 52.8 (2); SEMCAD X Version 14.6.6 (6477)

Test Date: 2012-08-31; Ambient Temp: 22.4; Tissue Temp: 22.7

Dipole Validation

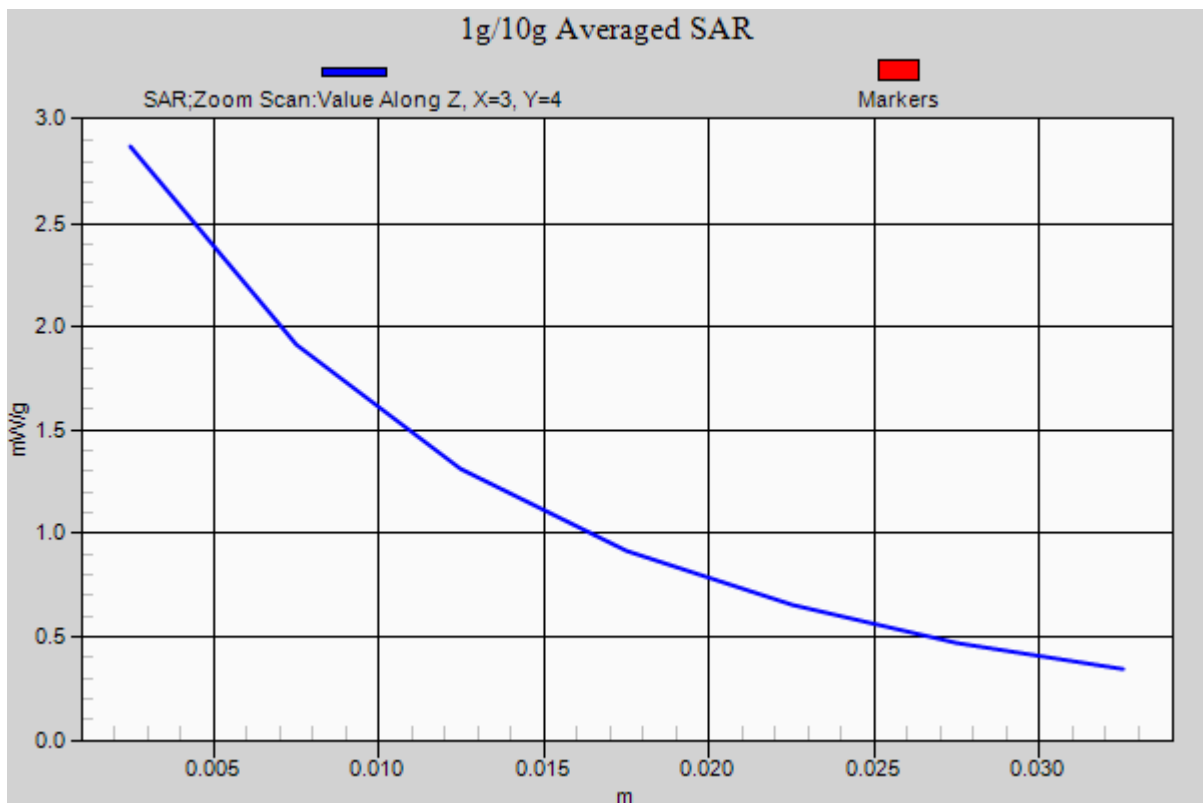
Area Scan (51x101x1): Measurement grid: dx=15mm, dy=15mm

Zoom Scan (7x7x7)/Cube 0: Measurement grid: dx=5mm, dy=5mm, dz=5mm

Power Drift = -0.10 dB

Peak SAR (extrapolated) = 3.627 mW/g

SAR(1 g) = 2.39 W/kg; SAR(10 g) = 1.57 W/kg



DIGITAL EMC CO., LTD

DUT: Dipole 835 MHz; Type: D835V2; Serial: D835V2 - SN:464

Communication System: CW; Frequency: 835 MHz; Duty Cycle: 1:1

Medium parameters used: $f = 835$ MHz; $\sigma = 0.985$ mho/m; $\epsilon_r = 53.771$; $\rho = 1000$ kg/m³

Phantom section: Flat Section

DASY5 Configuration:

Probe: EX3DV4 - SN3866; ConvF(9.03, 9.03, 9.03); Calibrated: 2012-06-20; ; Electronics: DAE4 Sn1335

Phantom: SAM with CRP_20120521; Type: SAM; Serial: 1679

Measurement SW: DASY52, Version 52.8 (2); SEMCAD X Version 14.6.6 (6477)

Test Date: 2012-08-31; Ambient Temp: 22.4; Tissue Temp: 22.7

Dipole Validation

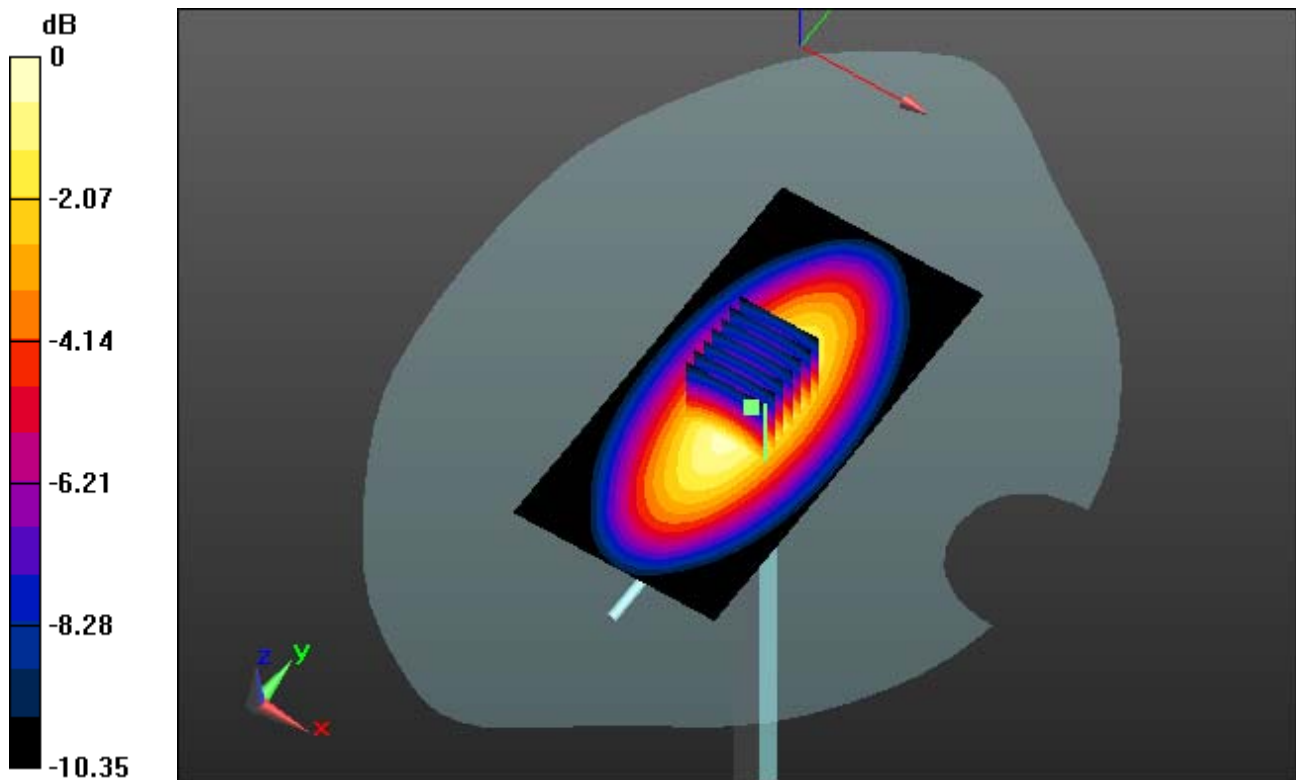
Area Scan (51x101x1): Measurement grid: dx=15mm, dy=15mm

Zoom Scan (7x7x7)/Cube 0: Measurement grid: dx=5mm, dy=5mm, dz=5mm

Power Drift = -0.07 dB

Peak SAR (extrapolated) = 3.795 mW/g

SAR(1 g) = 2.53 W/kg; SAR(10 g) = 1.66 W/kg



0 dB = 3.08 mW/g

DIGITAL EMC CO., LTD

DUT: Dipole 835 MHz; Type: D835V2; Serial: D835V2 - SN:464

Communication System: CW; Frequency: 835 MHz; Duty Cycle: 1:1

Medium parameters used: $f = 835$ MHz; $\sigma = 0.985$ mho/m; $\epsilon_r = 53.771$; $\rho = 1000$ kg/m³

Phantom section: Flat Section

DASY5 Configuration:

Probe: EX3DV4 - SN3866; ConvF(9.03, 9.03, 9.03); Calibrated: 2012-06-20; ; Electronics: DAE4 Sn1335

Phantom: SAM with CRP_20120521; Type: SAM; Serial: 1679

Measurement SW: DASY52, Version 52.8 (2); SEMCAD X Version 14.6.6 (6477)

Test Date: 2012-08-31; Ambient Temp: 22.4; Tissue Temp: 22.7

Dipole Validation

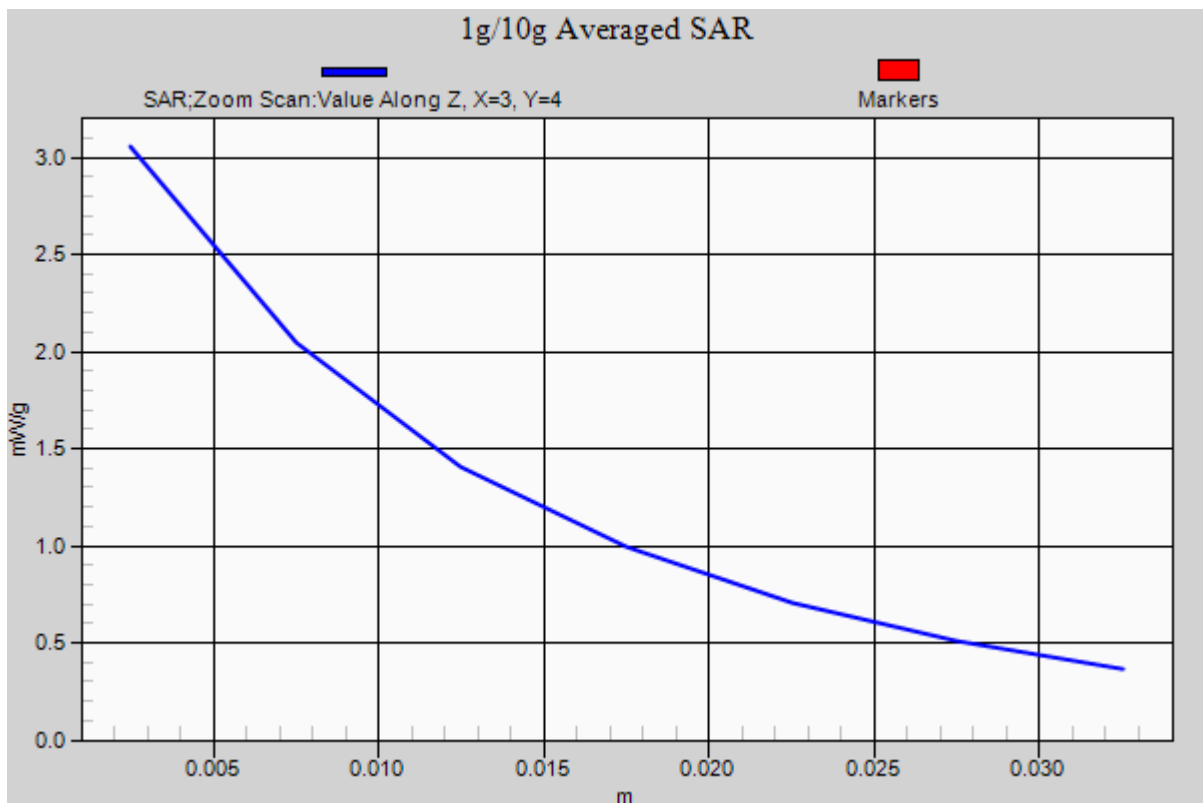
Area Scan (51x101x1): Measurement grid: dx=15mm, dy=15mm

Zoom Scan (7x7x7)/Cube 0: Measurement grid: dx=5mm, dy=5mm, dz=5mm

Power Drift = -0.07 dB

Peak SAR (extrapolated) = 3.795 mW/g

SAR(1 g) = 2.53 W/kg; SAR(10 g) = 1.66 W/kg



DIGITAL EMC CO., LTD

DUT: Dipole 835 MHz; Type: D835V2; Serial: D835V2 - SN:464

Communication System: CW; Frequency: 835 MHz; Duty Cycle: 1:1

Medium parameters used: $f = 835$ MHz; $\sigma = 0.886$ mho/m; $\epsilon_r = 40.799$; $\rho = 1000$ kg/m³

Phantom section: Flat Section

DASY5 Configuration:

Probe: EX3DV4 - SN3866; ConvF(8.98, 8.98, 8.98); Calibrated: 2012-06-20; ; Electronics: DAE4 Sn1335

Phantom: SAM with CRP_20120521; Type: SAM; Serial: 1679

Measurement SW: DASY52, Version 52.8 (2); SEMCAD X Version 14.6.6 (6477)

Test Date: 2012-08-14; Ambient Temp: 22.0; Tissue Temp: 22.2

Dipole Validation

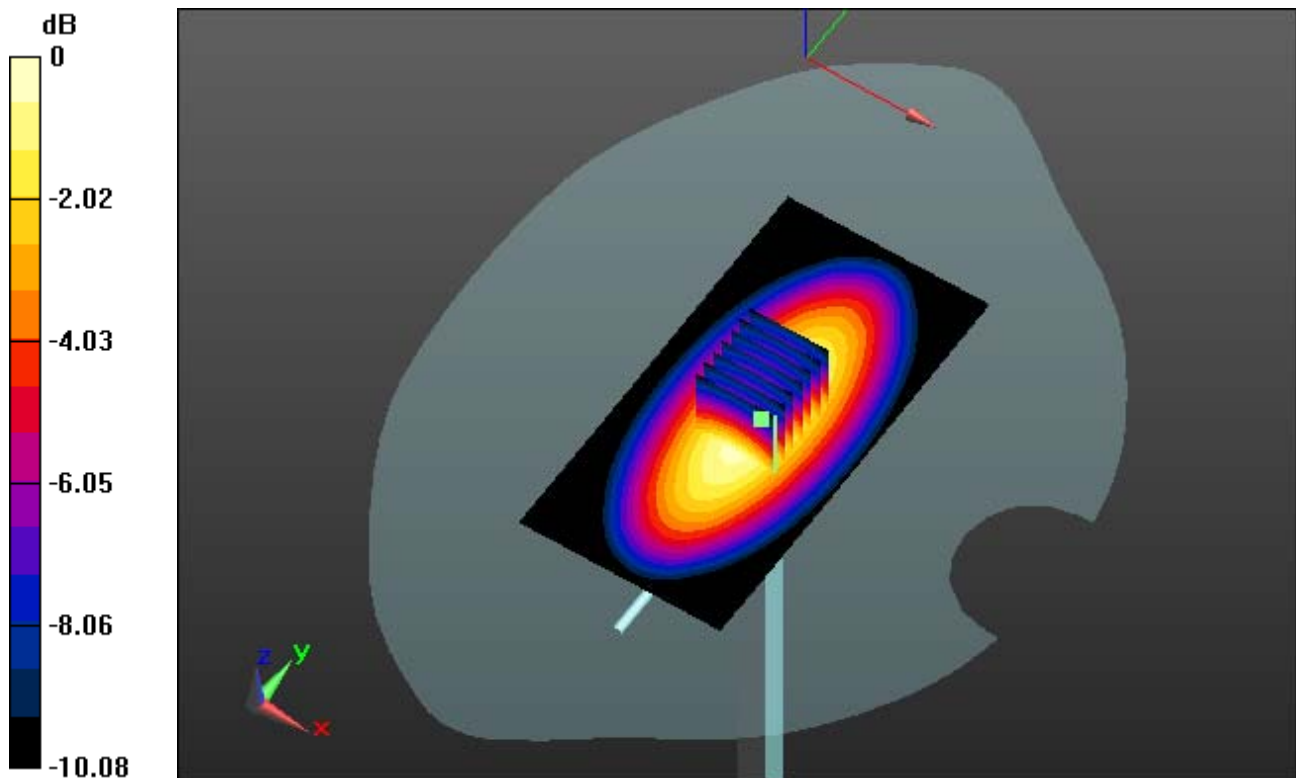
Area Scan (51x101x1): Measurement grid: dx=15mm, dy=15mm

Zoom Scan (7x7x7)/Cube 0: Measurement grid: dx=5mm, dy=5mm, dz=5mm

Power Drift = 0.04 dB

Peak SAR (extrapolated) = 3.681 mW/g

SAR(1 g) = 2.44 W/kg; SAR(10 g) = 1.61 W/kg



0 dB = 2.63 mW/g

DIGITAL EMC CO., LTD

DUT: Dipole 835 MHz; Type: D835V2; Serial: D835V2 - SN:464

Communication System: CW; Frequency: 835 MHz; Duty Cycle: 1:1

Medium parameters used: $f = 835$ MHz; $\sigma = 0.886$ mho/m; $\epsilon_r = 40.799$; $\rho = 1000$ kg/m³

Phantom section: Flat Section

DASY5 Configuration:

Probe: EX3DV4 - SN3866; ConvF(8.98, 8.98, 8.98); Calibrated: 2012-06-20; ; Electronics: DAE4 Sn1335

Phantom: SAM with CRP_20120521; Type: SAM; Serial: 1679

Measurement SW: DASY52, Version 52.8 (2); SEMCAD X Version 14.6.6 (6477)

Test Date: 2012-08-14; Ambient Temp: 22.0; Tissue Temp: 22.2

Dipole Validation

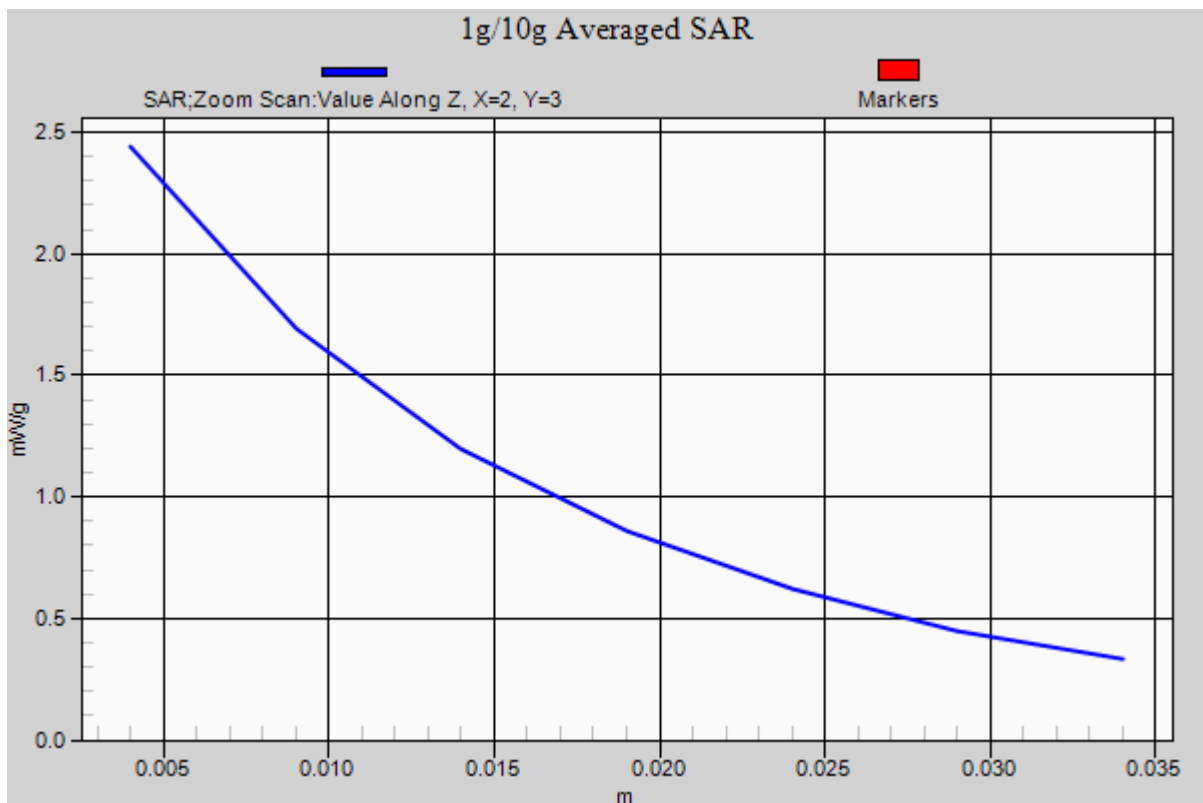
Area Scan (51x101x1): Measurement grid: dx=15mm, dy=15mm

Zoom Scan (7x7x7)/Cube 0: Measurement grid: dx=5mm, dy=5mm, dz=5mm

Power Drift = 0.04 dB

Peak SAR (extrapolated) = 3.681 mW/g

SAR(1 g) = 2.44 W/kg; SAR(10 g) = 1.61 W/kg



DIGITAL EMC CO., LTD

DUT: Dipole 835 MHz; Type: D835V2; Serial: D835V2 - SN:464

Communication System: CW; Frequency: 835 MHz; Duty Cycle: 1:1
Medium parameters used: $f = 835$ MHz; $\sigma = 0.966$ mho/m; $\epsilon_r = 54.033$; $\rho = 1000$ kg/m³
Phantom section: Flat Section

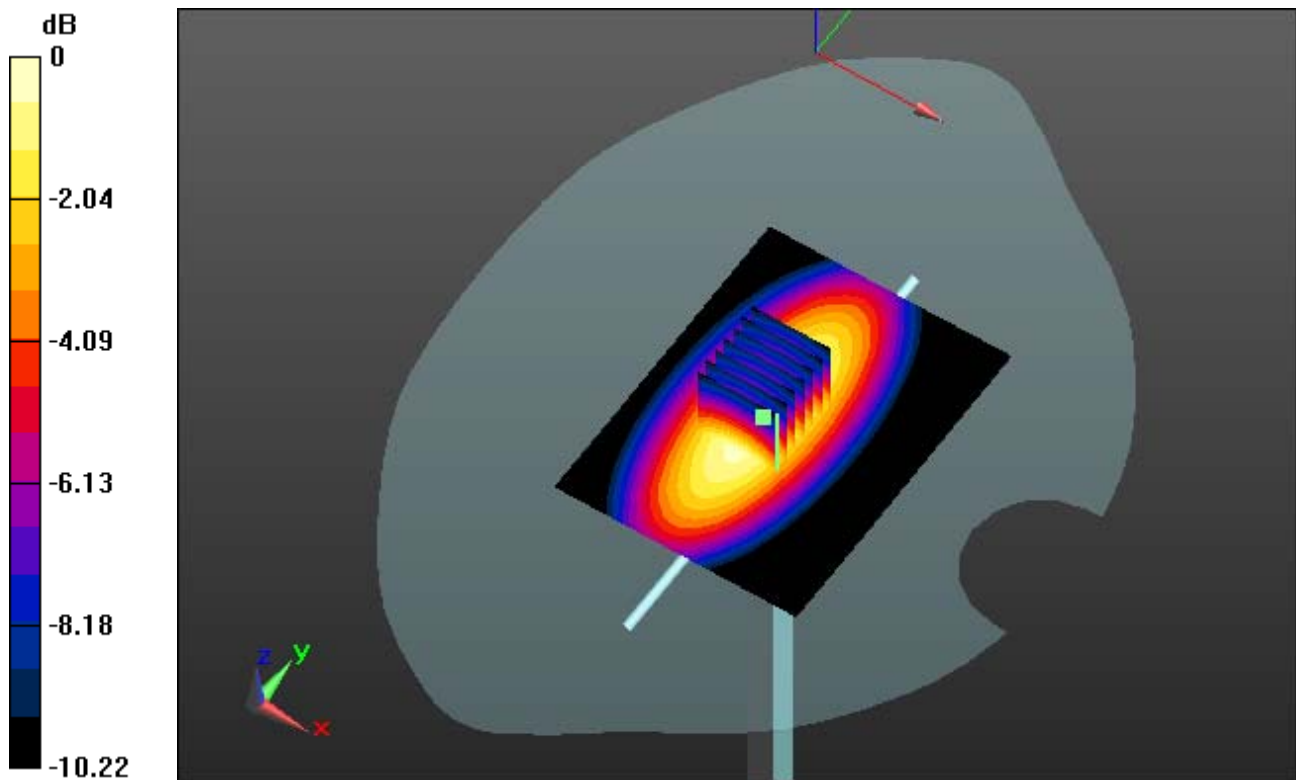
DASY5 Configuration:

Probe: EX3DV4 - SN3866; ConvF(9.03, 9.03, 9.03); Calibrated: 2012-06-20; ; Electronics: DAE4 Sn1335
Phantom: SAM with CRP_20120521; Type: SAM; Serial: 1679
Measurement SW: DASY52, Version 52.8 (2); SEMCAD X Version 14.6.6 (6477)

Test Date: 2012-08-14; Ambient Temp: 22.0; Tissue Temp: 22.2

Dipole Validation

Area Scan (61x81x1): Measurement grid: dx=15mm, dy=15mm
Zoom Scan (7x7x7)/Cube 0: Measurement grid: dx=5mm, dy=5mm, dz=5mm
Power Drift = -0.02 dB
Peak SAR (extrapolated) = 3.729 mW/g
SAR(1 g) = 2.51 W/kg; SAR(10 g) = 1.65 W/kg



0 dB = 3.06 mW/g

DIGITAL EMC CO., LTD

DUT: Dipole 835 MHz; Type: D835V2; Serial: D835V2 - SN:464

Communication System: CW; Frequency: 835 MHz; Duty Cycle: 1:1

Medium parameters used: $f = 835$ MHz; $\sigma = 0.966$ mho/m; $\epsilon_r = 54.033$; $\rho = 1000$ kg/m³

Phantom section: Flat Section

DASY5 Configuration:

Probe: EX3DV4 - SN3866; ConvF(9.03, 9.03, 9.03); Calibrated: 2012-06-20; ; Electronics: DAE4 Sn1335

Phantom: SAM with CRP_20120521; Type: SAM; Serial: 1679

Measurement SW: DASY52, Version 52.8 (2); SEMCAD X Version 14.6.6 (6477)

Test Date: 2012-08-14; Ambient Temp: 22.0; Tissue Temp: 22.2

Dipole Validation

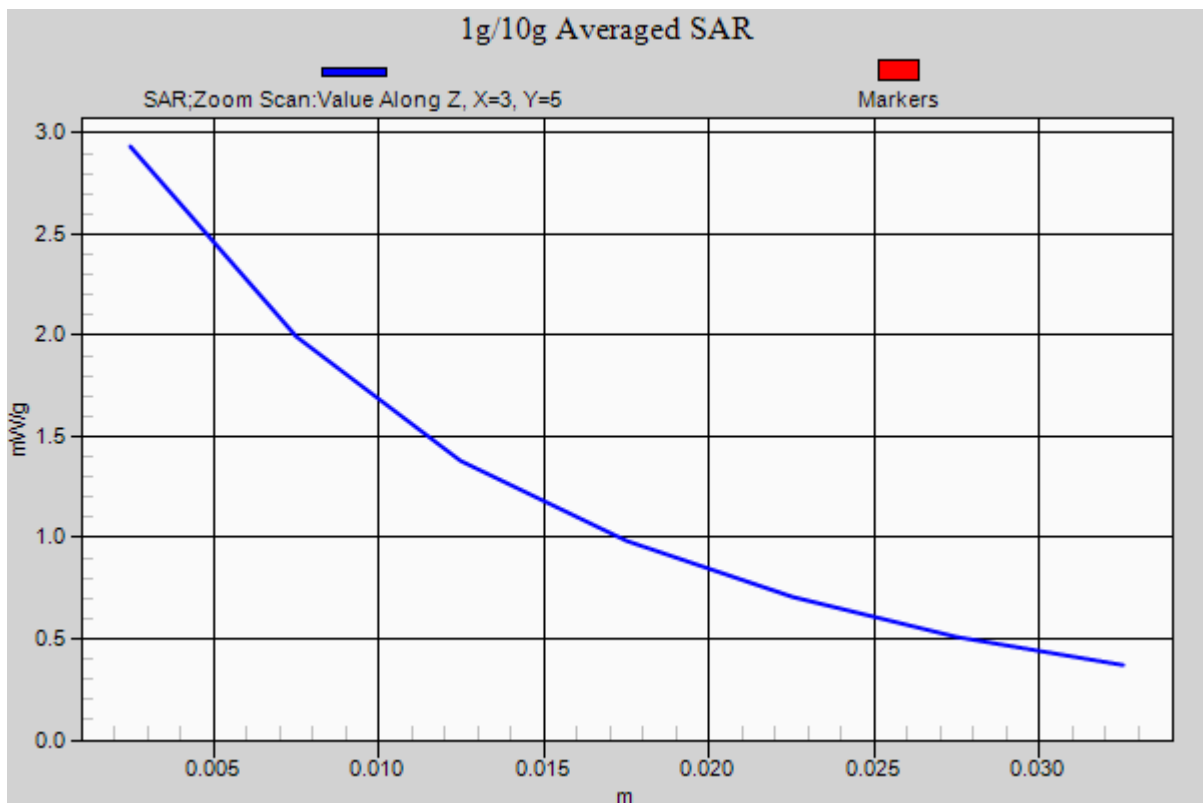
Area Scan (61x81x1): Measurement grid: dx=15mm, dy=15mm

Zoom Scan (7x7x7)/Cube 0: Measurement grid: dx=5mm, dy=5mm, dz=5mm

Power Drift = -0.02 dB

Peak SAR (extrapolated) = 3.729 mW/g

SAR(1 g) = 2.51 W/kg; SAR(10 g) = 1.65 W/kg



DIGITAL EMC CO., LTD

DUT: Dipole 1900 MHz; Type: D1900V2; Serial: D1900V2 - SN:5d029

Communication System: CW; Frequency: 1900 MHz; Duty Cycle: 1:1

Medium parameters used: $f = 1900$ MHz; $\sigma = 1.421$ mho/m; $\epsilon_r = 39.974$; $\rho = 1000$ kg/m³

Phantom section: Flat Section

DASY5 Configuration:

Probe: EX3DV4 - SN3866; ConvF(7.76, 7.76, 7.76); Calibrated: 2012-06-20; ; Electronics: DAE4 Sn1335

Phantom: SAM with CRP_20120521; Type: SAM; Serial: 1679

Measurement SW: DASY52, Version 52.8 (2); SEMCAD X Version 14.6.6 (6477)

Test Date: 2012-08-30; Ambient Temp: 22.2; Tissue Temp: 22.5

Dipole Validation

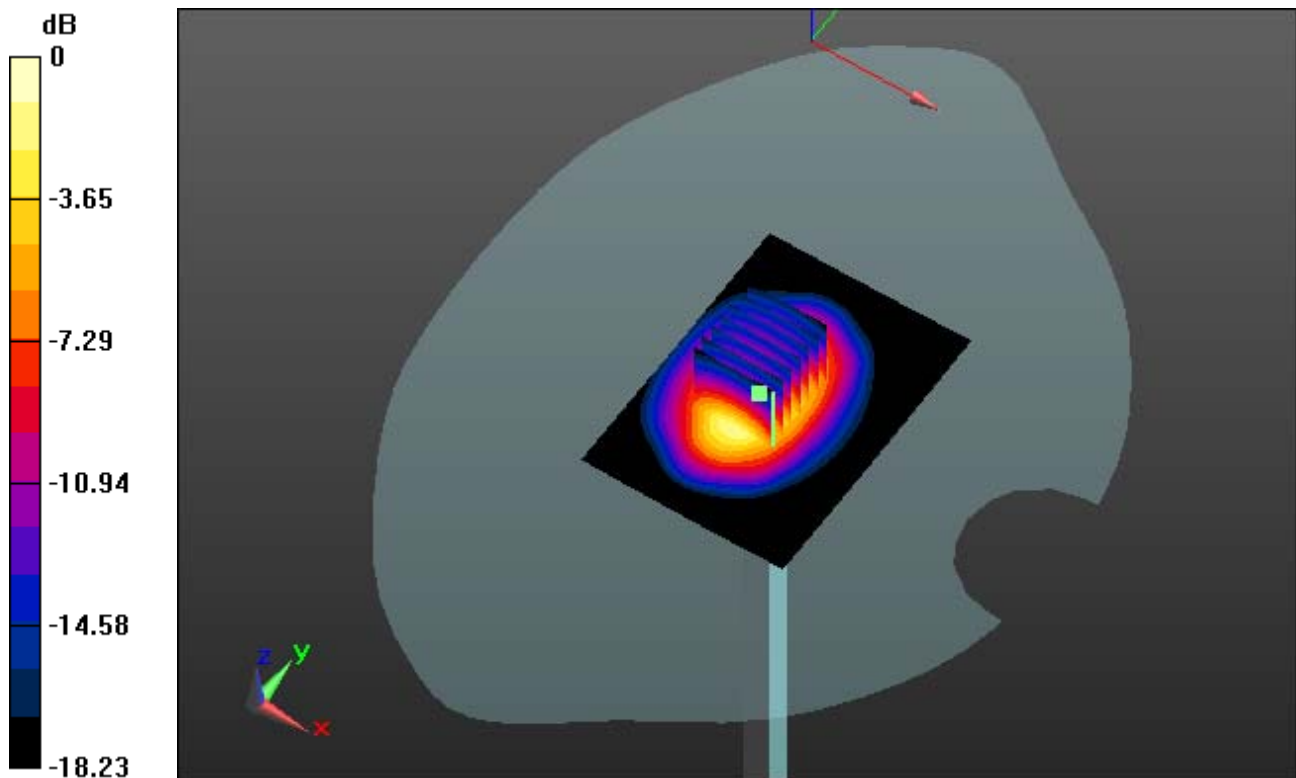
Area Scan (51x71x1): Measurement grid: dx=15mm, dy=15mm

Zoom Scan (7x7x7)/Cube 0: Measurement grid: dx=5mm, dy=5mm, dz=5mm

Power Drift = 0.05 dB

Peak SAR (extrapolated) = 17.517 mW/g

SAR(1 g) = 9.13 W/kg; SAR(10 g) = 4.66 W/kg



0 dB = 12.5 mW/g

DIGITAL EMC CO., LTD

DUT: Dipole 1900 MHz; Type: D1900V2; Serial: D1900V2 - SN:5d029

Communication System: CW; Frequency: 1900 MHz; Duty Cycle: 1:1

Medium parameters used: $f = 1900$ MHz; $\sigma = 1.421$ mho/m; $\epsilon_r = 39.974$; $\rho = 1000$ kg/m³

Phantom section: Flat Section

DASY5 Configuration:

Probe: EX3DV4 - SN3866; ConvF(7.76, 7.76, 7.76); Calibrated: 2012-06-20; ; Electronics: DAE4 Sn1335

Phantom: SAM with CRP_20120521; Type: SAM; Serial: 1679

Measurement SW: DASY52, Version 52.8 (2); SEMCAD X Version 14.6.6 (6477)

Test Date: 2012-08-30; Ambient Temp: 22.2; Tissue Temp: 22.5

Dipole Validation

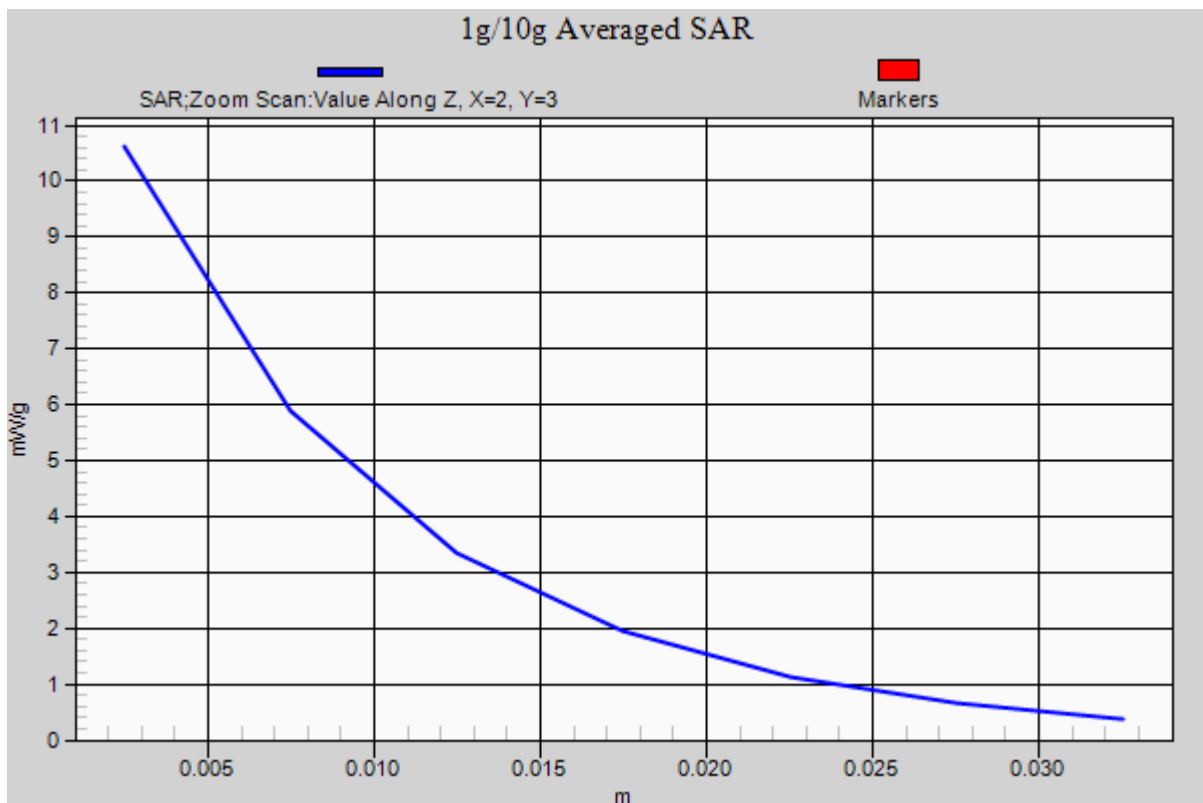
Area Scan (51x71x1): Measurement grid: dx=15mm, dy=15mm

Zoom Scan (7x7x7)/Cube 0: Measurement grid: dx=5mm, dy=5mm, dz=5mm

Power Drift = 0.05 dB

Peak SAR (extrapolated) = 17.517 mW/g

SAR(1 g) = 9.13 W/kg; SAR(10 g) = 4.66 W/kg



DIGITAL EMC CO., LTD

DUT: Dipole 1900 MHz; Type: D1900V2; Serial: D1900V2 - SN:5d029

Communication System: CW; Frequency: 1900 MHz; Duty Cycle: 1:1

Medium parameters used: $f = 1900$ MHz; $\sigma = 1.514$ mho/m; $\epsilon_r = 51.875$; $\rho = 1000$ kg/m³

Phantom section: Flat Section

DASY5 Configuration:

Probe: EX3DV4 - SN3866; ConvF(7.34, 7.34, 7.34); Calibrated: 2012-06-20; ; Electronics: DAE4 Sn1335

Phantom: SAM with CRP_20120521; Type: SAM; Serial: 1679

Measurement SW: DASY52, Version 52.8 (2); SEMCAD X Version 14.6.6 (6477)

Test Date: 2012-08-30; Ambient Temp: 22.2; Tissue Temp: 22.5

Dipole Validation

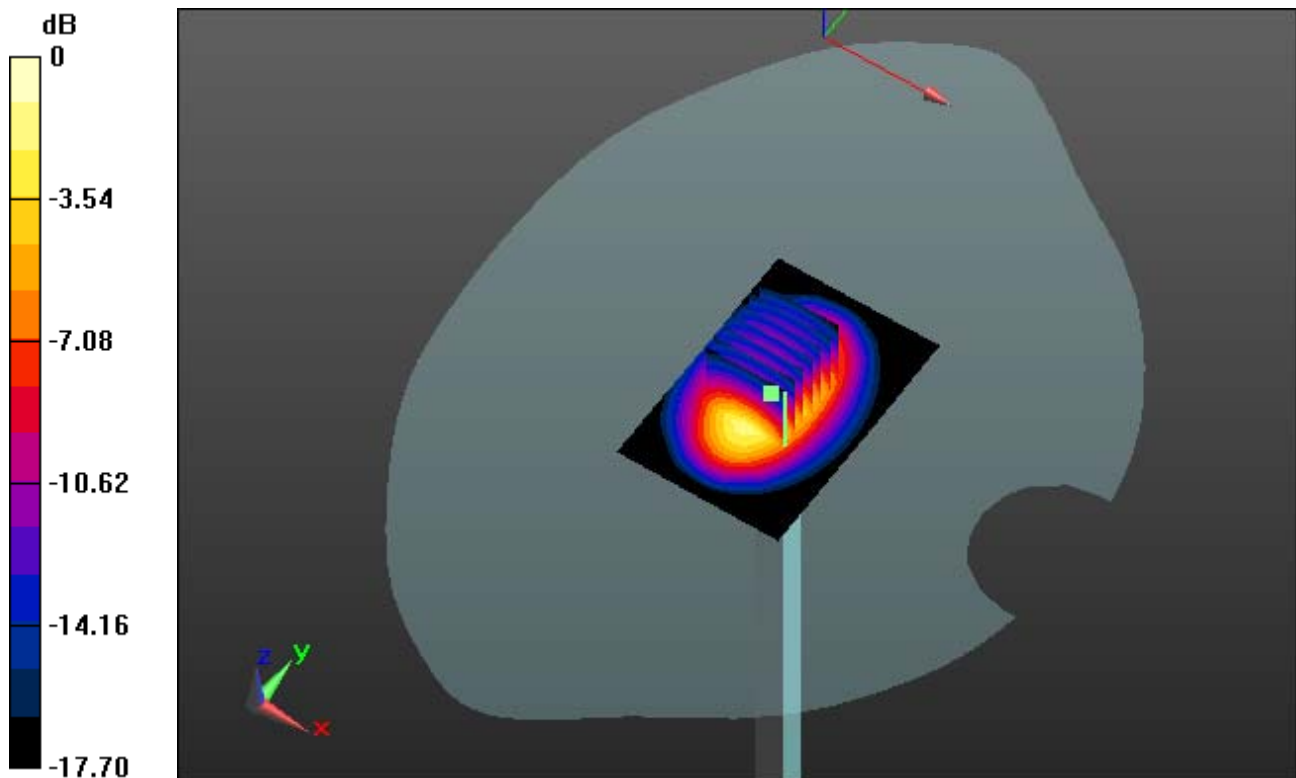
Area Scan (61x91x1): Measurement grid: dx=10mm, dy=10mm

Zoom Scan (7x7x7)/Cube 0: Measurement grid: dx=5mm, dy=5mm, dz=5mm

Power Drift = 0.05 dB

Peak SAR (extrapolated) = 17.843 mW/g

SAR(1 g) = 9.5 W/kg; SAR(10 g) = 4.9 W/kg



0 dB = 13.0 mW/g

DIGITAL EMC CO., LTD

DUT: Dipole 1900 MHz; Type: D1900V2; Serial: D1900V2 - SN:5d029

Communication System: CW; Frequency: 1900 MHz; Duty Cycle: 1:1

Medium parameters used: $f = 1900$ MHz; $\sigma = 1.514$ mho/m; $\epsilon_r = 51.875$; $\rho = 1000$ kg/m³

Phantom section: Flat Section

DASY5 Configuration:

Probe: EX3DV4 - SN3866; ConvF(7.34, 7.34, 7.34); Calibrated: 2012-06-20; ; Electronics: DAE4 Sn1335

Phantom: SAM with CRP_20120521; Type: SAM; Serial: 1679

Measurement SW: DASY52, Version 52.8 (2); SEMCAD X Version 14.6.6 (6477)

Test Date: 2012-08-30; Ambient Temp: 22.2; Tissue Temp: 22.5

Dipole Validation

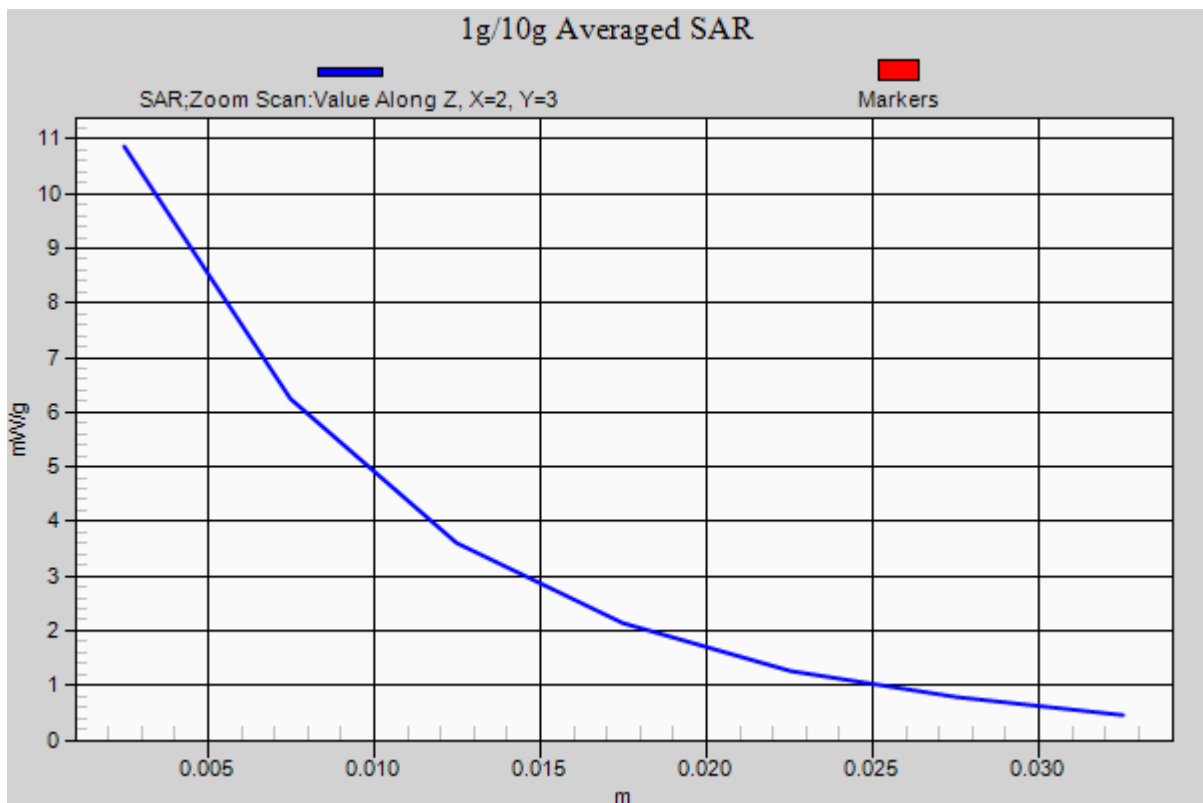
Area Scan (61x91x1): Measurement grid: dx=10mm, dy=10mm

Zoom Scan (7x7x7)/Cube 0: Measurement grid: dx=5mm, dy=5mm, dz=5mm

Power Drift = 0.05 dB

Peak SAR (extrapolated) = 17.843 mW/g

SAR(1 g) = 9.5 W/kg; SAR(10 g) = 4.9 W/kg



DIGITAL EMC CO., LTD

DUT: Dipole 2450 MHz; Type: D2450V2; Serial: D2450V2 - SN:726

Communication System: CW; Frequency: 2450 MHz; Duty Cycle: 1:1

Medium parameters used: $f = 2450$ MHz; $\sigma = 1.848$ mho/m; $\epsilon_r = 37.647$; $\rho = 1000$ kg/m³

Phantom section: Flat Section

DASY5 Configuration:

Probe: EX3DV4 - SN3866; ConvF(6.98, 6.98, 6.98); Calibrated: 2012-06-20; ; Electronics: DAE4 Sn1335

Phantom: SAM with CRP_20120521; Type: SAM; Serial: 1679

Measurement SW: DASY52, Version 52.8 (2); SEMCAD X Version 14.6.6 (6477)

Test Date: 2012-08-17; Ambient Temp: 22.1; Tissue Temp: 22.3

Dipole Validation

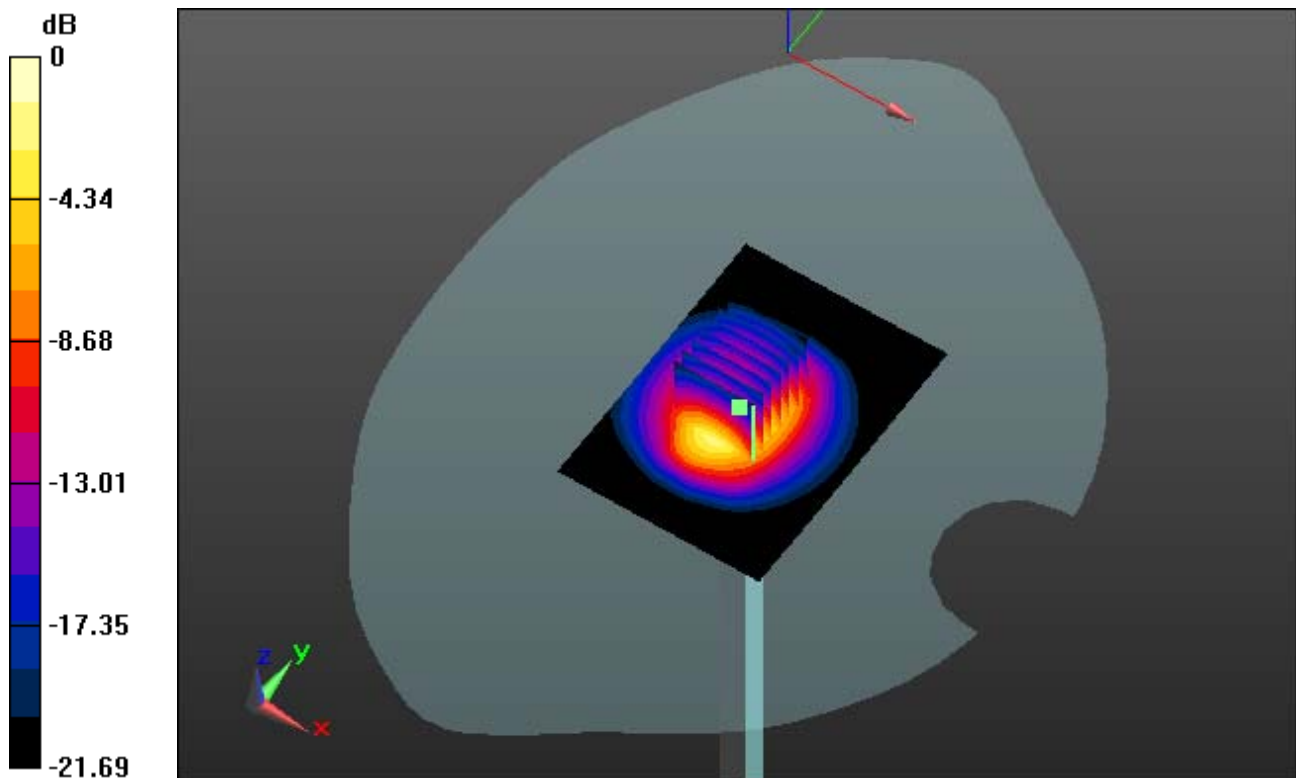
Area Scan (51x71x1): Measurement grid: dx=15mm, dy=15mm

Zoom Scan (7x7x7)/Cube 0: Measurement grid: dx=5mm, dy=5mm, dz=5mm

Power Drift = 0.01 dB

Peak SAR (extrapolated) = 27.037 mW/g

SAR(1 g) = 13.1 W/kg; SAR(10 g) = 6.1 W/kg



0 dB = 18.4 mW/g

DIGITAL EMC CO., LTD

DUT: Dipole 2450 MHz; Type: D2450V2; Serial: D2450V2 - SN:726

Communication System: CW; Frequency: 2450 MHz; Duty Cycle: 1:1
Medium parameters used: $f = 2450$ MHz; $\sigma = 1.848$ mho/m; $\epsilon_r = 37.647$; $\rho = 1000$ kg/m³
Phantom section: Flat Section

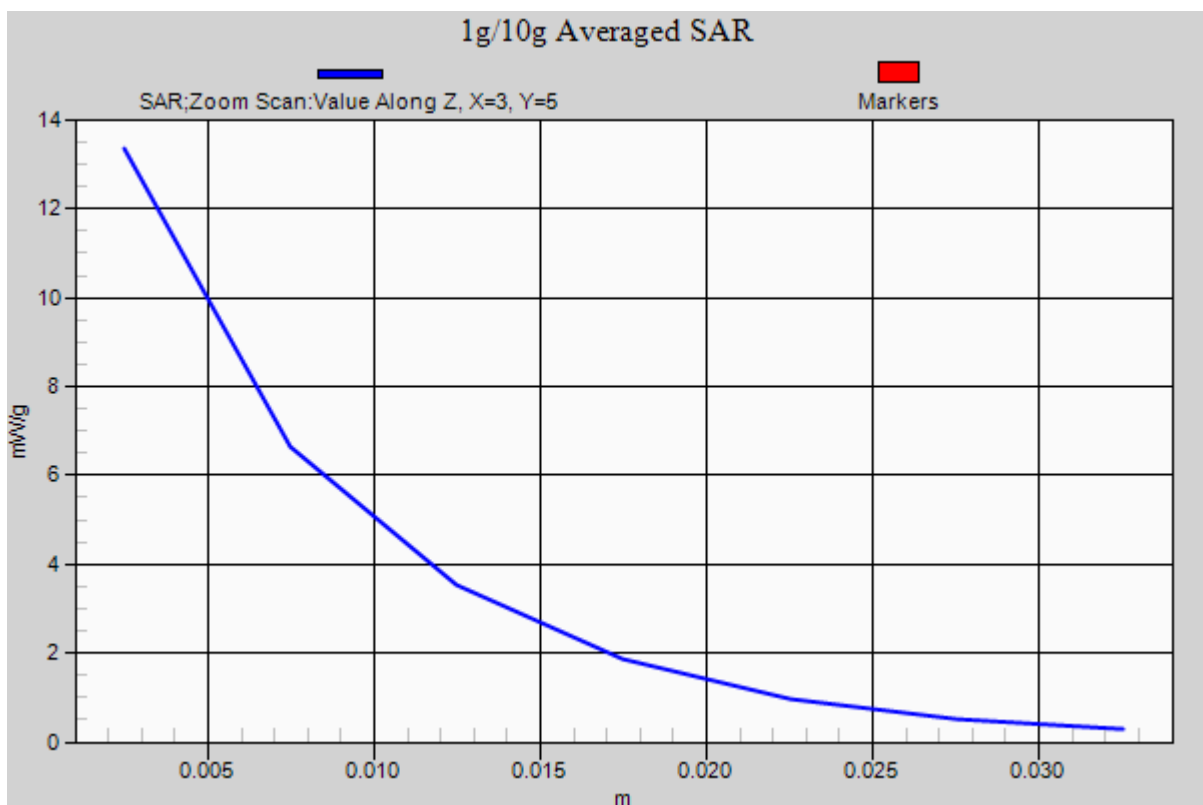
DASY5 Configuration:

Probe: EX3DV4 - SN3866; ConvF(6.98, 6.98, 6.98); Calibrated: 2012-06-20; ; Electronics: DAE4 Sn1335
Phantom: SAM with CRP_20120521; Type: SAM; Serial: 1679
Measurement SW: DASY52, Version 52.8 (2); SEMCAD X Version 14.6.6 (6477)

Test Date: 2012-08-17; Ambient Temp: 22.1; Tissue Temp: 22.3

Dipole Validation

Area Scan (51x71x1): Measurement grid: dx=15mm, dy=15mm
Zoom Scan (7x7x7)/Cube 0: Measurement grid: dx=5mm, dy=5mm, dz=5mm
Power Drift = 0.01 dB
Peak SAR (extrapolated) = 27.037 mW/g
SAR(1 g) = 13.1 W/kg; SAR(10 g) = 6.1 W/kg



DIGITAL EMC CO., LTD

DUT: Dipole 2450 MHz; Type: D2450V2; Serial: D2450V2 - SN:726

Communication System: CW; Frequency: 2450 MHz; Duty Cycle: 1:1

Medium parameters used: $f = 2450$ MHz; $\sigma = 1.993$ mho/m; $\epsilon_r = 50.909$; $\rho = 1000$ kg/m³

Phantom section: Flat Section

DASY5 Configuration:

Probe: EX3DV4 - SN3866; ConvF(6.97, 6.97, 6.97); Calibrated: 2012-06-20; ; Electronics: DAE4 Sn1335

Phantom: SAM with CRP_20120521; Type: SAM; Serial: 1679

Measurement SW: DASY52, Version 52.8 (2); SEMCAD X Version 14.6.6 (6477)

Test Date: 2012-08-17; Ambient Temp: 22.1; Tissue Temp: 22.3

Dipole Validation

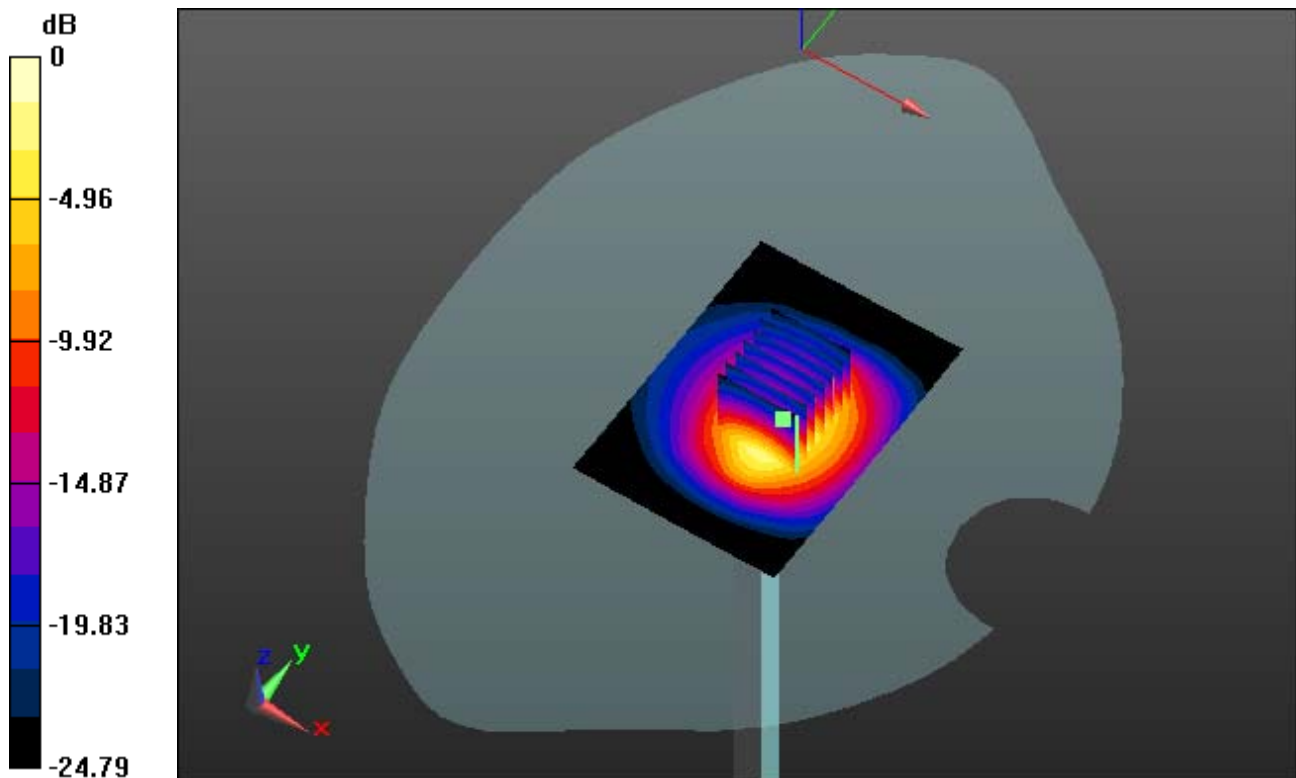
Area Scan (51x71x1): Measurement grid: dx=15mm, dy=15mm

Zoom Scan (7x7x7)/Cube 0: Measurement grid: dx=5mm, dy=5mm, dz=5mm

Power Drift = -0.06 dB

Peak SAR (extrapolated) = 30.329 mW/g

SAR(1 g) = 13 W/kg; SAR(10 g) = 5.73 W/kg



0 dB = 18.8 mW/g

DIGITAL EMC CO., LTD

DUT: Dipole 2450 MHz; Type: D2450V2; Serial: D2450V2 - SN:726

Communication System: CW; Frequency: 2450 MHz; Duty Cycle: 1:1

Medium parameters used: $f = 2450$ MHz; $\sigma = 1.993$ mho/m; $\epsilon_r = 50.909$; $\rho = 1000$ kg/m³

Phantom section: Flat Section

DASY5 Configuration:

Probe: EX3DV4 - SN3866; ConvF(6.97, 6.97, 6.97); Calibrated: 2012-06-20; ; Electronics: DAE4 Sn1335

Phantom: SAM with CRP_20120521; Type: SAM; Serial: 1679

Measurement SW: DASY52, Version 52.8 (2); SEMCAD X Version 14.6.6 (6477)

Test Date: 2012-08-17; Ambient Temp: 22.1; Tissue Temp: 22.3

Dipole Validation

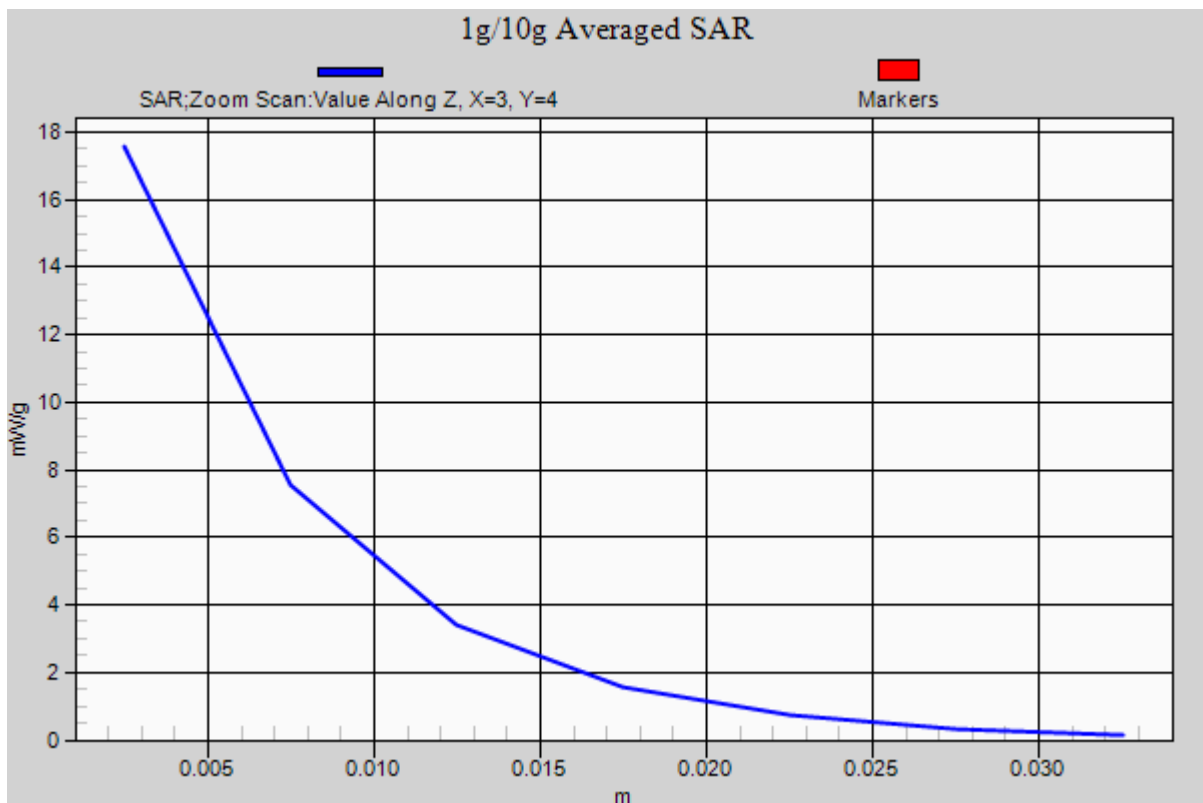
Area Scan (51x71x1): Measurement grid: dx=15mm, dy=15mm

Zoom Scan (7x7x7)/Cube 0: Measurement grid: dx=5mm, dy=5mm, dz=5mm

Power Drift = -0.06 dB

Peak SAR (extrapolated) = 30.329 mW/g

SAR(1 g) = 13 W/kg; SAR(10 g) = 5.73 W/kg



DIGITAL EMC CO., LTD

DUT: Dipole 5000 MHz; Type: D5GHzV2; Serial: D5GHzV2 - SN:1103

Communication System: CW; Frequency: 5200 MHz; Duty Cycle: 1:1

Medium parameters used: $f = 5200$ MHz; $\sigma = 4.782$ mho/m; $\epsilon_r = 35.664$; $\rho = 1000$ kg/m³

Phantom section: Flat Section

DASY5 Configuration:

Probe: EX3DV4 - SN3643; ConvF(4.94, 4.94, 4.94); Calibrated: 2012-01-27; ; Electronics: DAE4 Sn1335

Phantom: SAM with CRP_20120521; Type: SAM; Serial: 1679

Measurement SW: DASY52, Version 52.8 (2); SEMCAD X Version 14.6.6 (6477)

Test Date: 2012-08-16; Ambient Temp: 22.3; Tissue Temp: 22.4

Dipole Validation

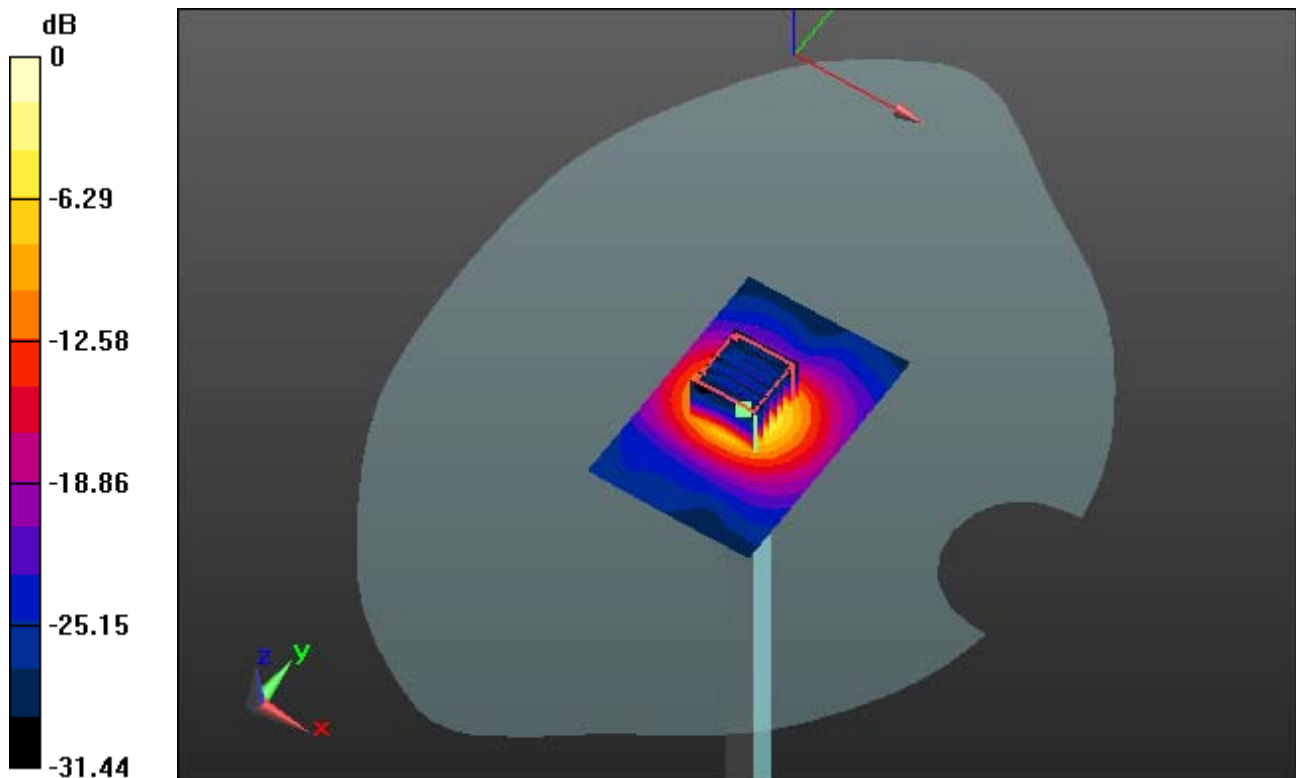
Area Scan (61x91x1): Measurement grid: dx=10mm, dy=10mm

Zoom Scan (7x7x11)/Cube 0: Measurement grid: dx=4mm, dy=4mm, dz=2mm

Power Drift = 0.04 dB

Peak SAR (extrapolated) = 35.620 mW/g

SAR(1 g) = 7.47 W/kg; SAR(10 g) = 2.14 W/kg



0 dB = 16.1 mW/g

DIGITAL EMC CO., LTD

DUT: Dipole 5000 MHz; Type: D5GHzV2; Serial: D5GHzV2 - SN:1103

Communication System: CW; Frequency: 5200 MHz; Duty Cycle: 1:1

Medium parameters used: $f = 5200$ MHz; $\sigma = 4.782$ mho/m; $\epsilon_r = 35.664$; $\rho = 1000$ kg/m³

Phantom section: Flat Section

DASY5 Configuration:

Probe: EX3DV4 - SN3643; ConvF(4.94, 4.94, 4.94); Calibrated: 2012-01-27; ; Electronics: DAE4 Sn1335

Phantom: SAM with CRP_20120521; Type: SAM; Serial: 1679

Measurement SW: DASY52, Version 52.8 (2); SEMCAD X Version 14.6.6 (6477)

Test Date: 2012-08-16; Ambient Temp: 22.3; Tissue Temp: 22.4

Dipole Validation

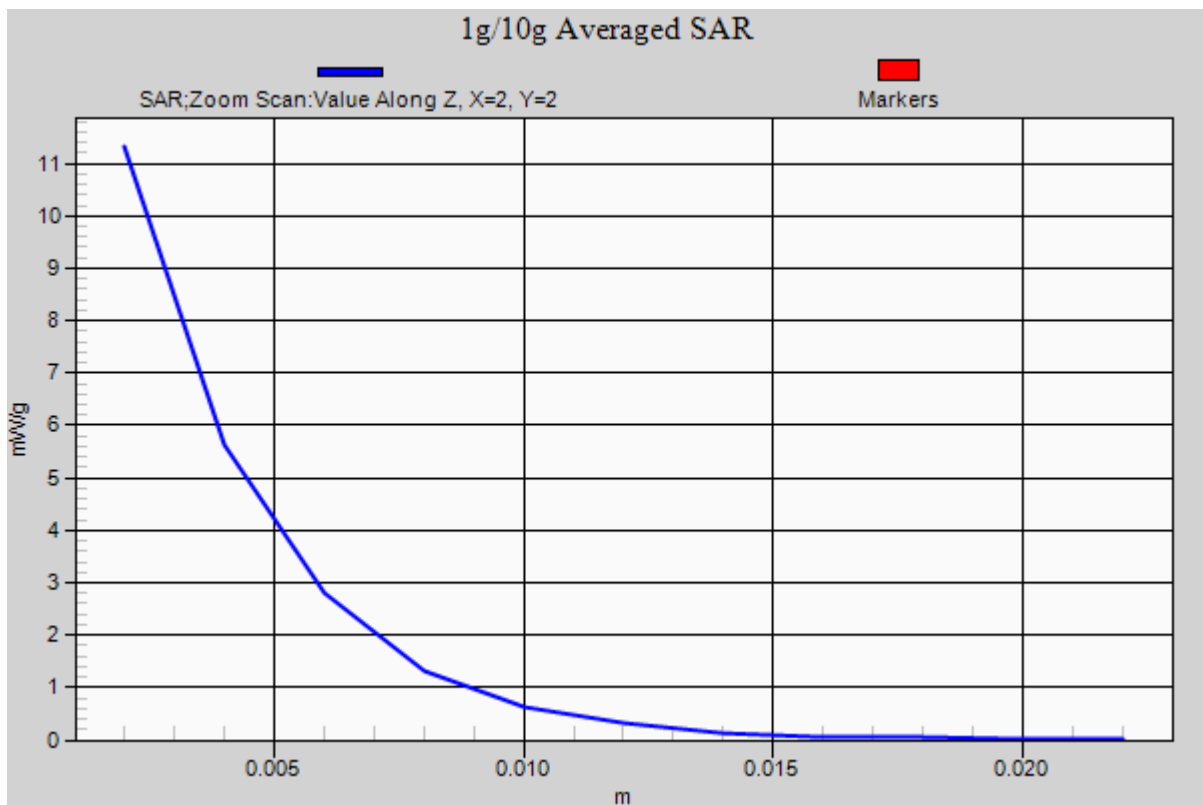
Area Scan (61x91x1): Measurement grid: dx=10mm, dy=10mm

Zoom Scan (7x7x11)/Cube 0: Measurement grid: dx=4mm, dy=4mm, dz=2mm

Power Drift = 0.04 dB

Peak SAR (extrapolated) = 35.620 mW/g

SAR(1 g) = 7.47 W/kg; SAR(10 g) = 2.14 W/kg



DIGITAL EMC CO., LTD

DUT: Dipole 5000 MHz; Type: D5GHzV2; Serial: D5GHzV2 - SN:1103

Communication System: CW; Frequency: 5200 MHz; Duty Cycle: 1:1

Medium parameters used: $f = 5200$ MHz; $\sigma = 5.113$ mho/m; $\epsilon_r = 47.664$; $\rho = 1000$ kg/m³

Phantom section: Flat Section

DASY5 Configuration:

Probe: EX3DV4 - SN3643; ConvF(4.23, 4.23, 4.23); Calibrated: 2012-01-27; ; Electronics: DAE4 Sn1335

Phantom: SAM with CRP_20120521; Type: SAM; Serial: 1679

Measurement SW: DASY52, Version 52.8 (2); SEMCAD X Version 14.6.6 (6477)

Test Date: 2012-08-15; Ambient Temp: 22.4; Tissue Temp: 22.5

Dipole Validation

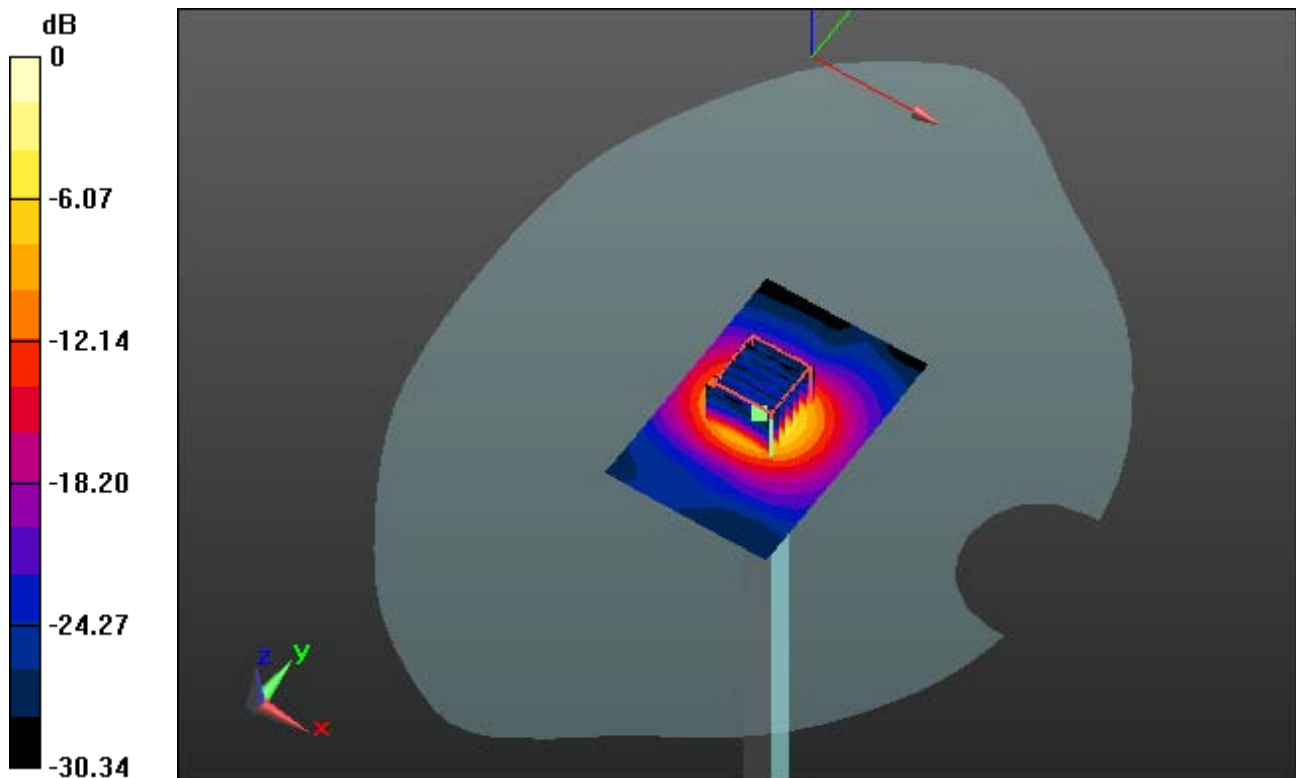
Area Scan (61x91x1): Measurement grid: dx=10mm, dy=10mm

Zoom Scan (7x7x11)/Cube 0: Measurement grid: dx=4mm, dy=4mm, dz=2mm

Power Drift = 0.01 dB

Peak SAR (extrapolated) = 32.437 mW/g

SAR(1 g) = 7.2 W/kg; SAR(10 g) = 2.07 W/kg



0 dB = 15.5 mW/g

DIGITAL EMC CO., LTD

DUT: Dipole 5000 MHz; Type: D5GHzV2; Serial: D5GHzV2 - SN:1103

Communication System: CW; Frequency: 5200 MHz; Duty Cycle: 1:1

Medium parameters used: $f = 5200$ MHz; $\sigma = 5.113$ mho/m; $\epsilon_r = 47.664$; $\rho = 1000$ kg/m³

Phantom section: Flat Section

DASY5 Configuration:

Probe: EX3DV4 - SN3643; ConvF(4.23, 4.23, 4.23); Calibrated: 2012-01-27; ; Electronics: DAE4 Sn1335

Phantom: SAM with CRP_20120521; Type: SAM; Serial: 1679

Measurement SW: DASY52, Version 52.8 (2); SEMCAD X Version 14.6.6 (6477)

Test Date: 2012-08-15; Ambient Temp: 22.4; Tissue Temp: 22.5

Dipole Validation

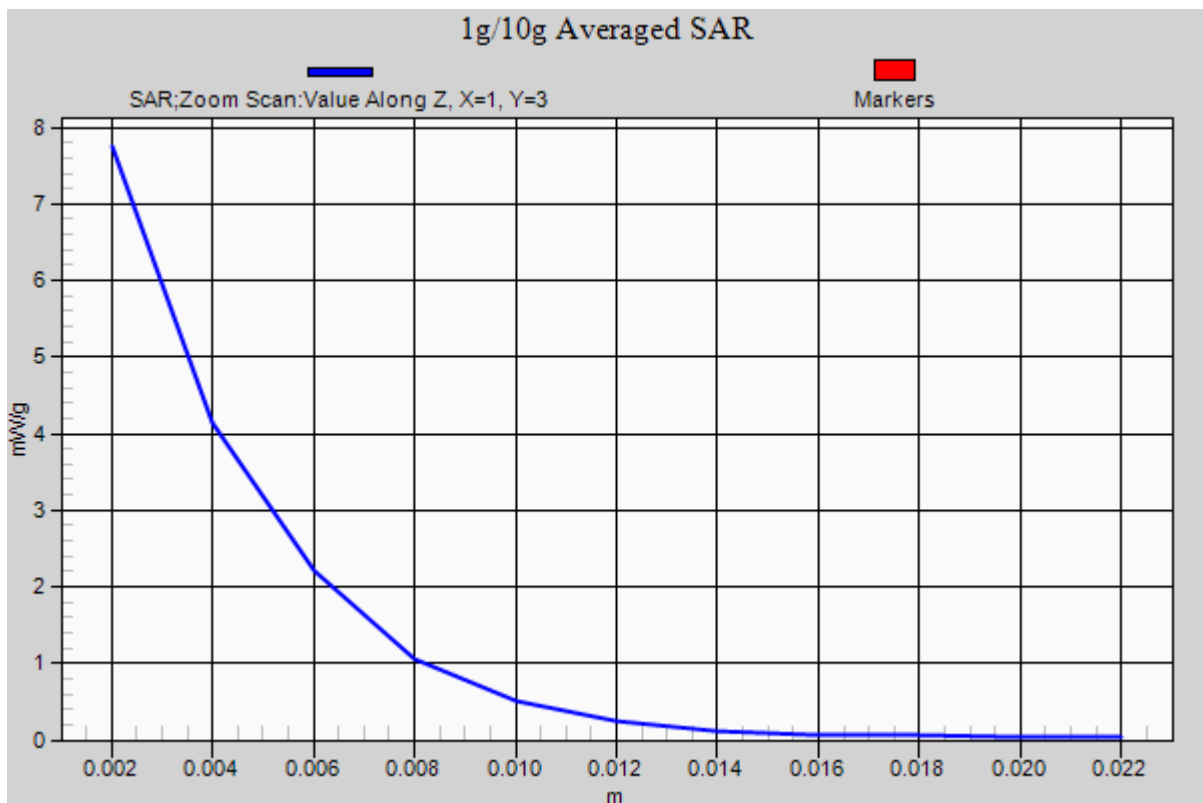
Area Scan (61x91x1): Measurement grid: dx=10mm, dy=10mm

Zoom Scan (7x7x11)/Cube 0: Measurement grid: dx=4mm, dy=4mm, dz=2mm

Power Drift = 0.01 dB

Peak SAR (extrapolated) = 32.437 mW/g

SAR(1 g) = 7.2 W/kg; SAR(10 g) = 2.07 W/kg



DIGITAL EMC CO., LTD

DUT: Dipole 5000 MHz; Type: D5GHzV2; Serial: D5GHzV2 - SN:1103

Communication System: CW; Frequency: 5500 MHz; Duty Cycle: 1:1

Medium parameters used: $f = 5500$ MHz; $\sigma = 5.066$ mho/m; $\epsilon_r = 36.039$; $\rho = 1000$ kg/m³

Phantom section: Flat Section

DASY5 Configuration:

Probe: EX3DV4 - SN3866; ConvF(4.45, 4.45, 4.45); Calibrated: 2012-06-20; ; Electronics: DAE4 Sn1335

Phantom: SAM with CRP_20120521; Type: SAM; Serial: 1679

Measurement SW: DASY52, Version 52.8 (2); SEMCAD X Version 14.6.6 (6477)

Test Date: 2012-08-16; Ambient Temp: 22.3; Tissue Temp: 22.4

Dipole Validation

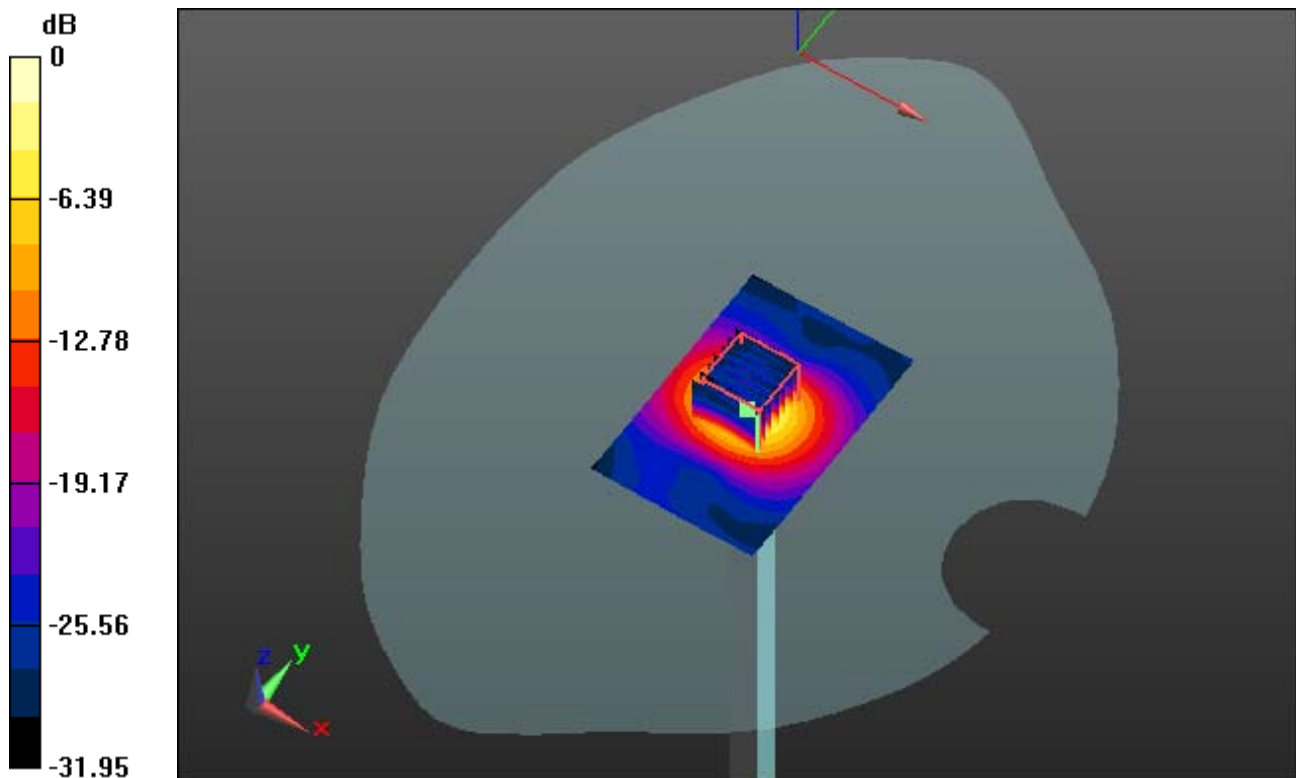
Area Scan (61x91x1): Measurement grid: dx=10mm, dy=10mm

Zoom Scan (7x7x11)/Cube 0: Measurement grid: dx=4mm, dy=4mm, dz=2mm

Power Drift = 0.05 dB

Peak SAR (extrapolated) = 42.357 mW/g

SAR(1 g) = 8.5 W/kg; SAR(10 g) = 2.42 W/kg



0 dB = 18.1 mW/g

DIGITAL EMC CO., LTD

DUT: Dipole 5000 MHz; Type: D5GHzV2; Serial: D5GHzV2 - SN:1103

Communication System: CW; Frequency: 5500 MHz; Duty Cycle: 1:1

Medium parameters used: $f = 5500$ MHz; $\sigma = 5.066$ mho/m; $\epsilon_r = 36.039$; $\rho = 1000$ kg/m³

Phantom section: Flat Section

DASY5 Configuration:

Probe: EX3DV4 - SN3866; ConvF(4.45, 4.45, 4.45); Calibrated: 2012-06-20; ; Electronics: DAE4 Sn1335

Phantom: SAM with CRP_20120521; Type: SAM; Serial: 1679

Measurement SW: DASY52, Version 52.8 (2); SEMCAD X Version 14.6.6 (6477)

Test Date: 2012-08-16; Ambient Temp: 22.3; Tissue Temp: 22.4

Dipole Validation

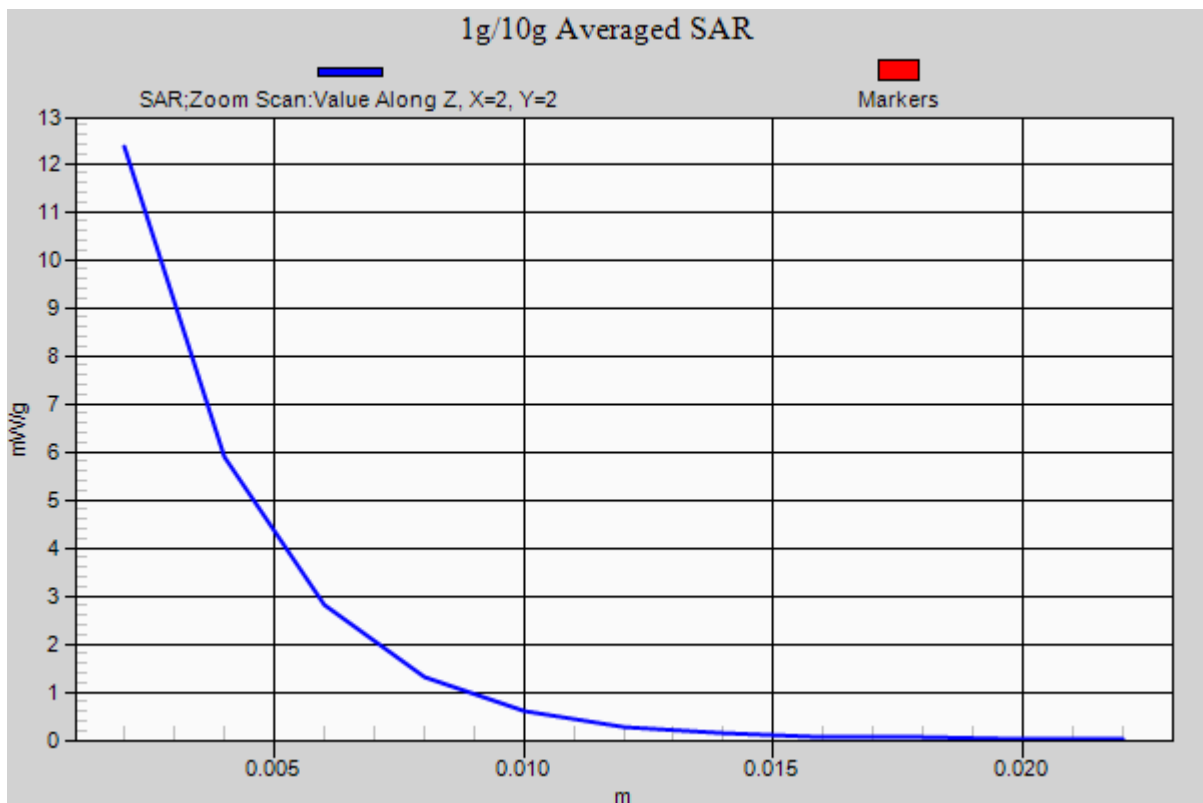
Area Scan (61x91x1): Measurement grid: dx=10mm, dy=10mm

Zoom Scan (7x7x11)/Cube 0: Measurement grid: dx=4mm, dy=4mm, dz=2mm

Power Drift = 0.05 dB

Peak SAR (extrapolated) = 42.357 mW/g

SAR(1 g) = 8.5 W/kg; SAR(10 g) = 2.42 W/kg



DIGITAL EMC CO., LTD

DUT: Dipole 5000 MHz; Type: D5GHzV2; Serial: D5GHzV2 - SN:1103

Communication System: CW; Frequency: 5500 MHz; Duty Cycle: 1:1

Medium parameters used: $f = 5500$ MHz; $\sigma = 5.503$ mho/m; $\epsilon_r = 46.977$; $\rho = 1000$ kg/m³

Phantom section: Flat Section

DASY5 Configuration:

Probe: EX3DV4 - SN3866; ConvF(3.86, 3.86, 3.86); Calibrated: 2012-06-20; ; Electronics: DAE4 Sn1335

Phantom: SAM with CRP_20120521; Type: SAM; Serial: 1679

Measurement SW: DASY52, Version 52.8 (2); SEMCAD X Version 14.6.6 (6477)

Test Date: 2012-08-15; Ambient Temp: 22.4; Tissue Temp: 22.5

Dipole Validation

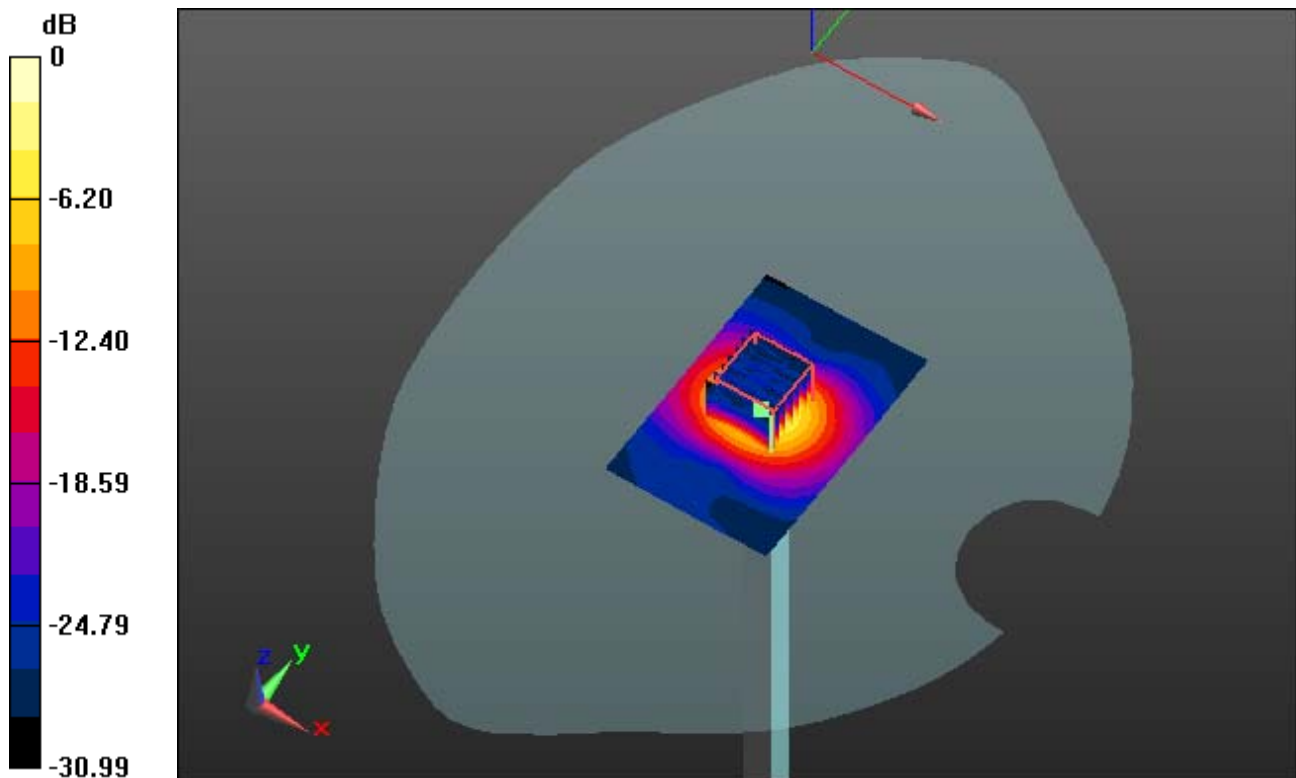
Area Scan (61x91x1): Measurement grid: dx=10mm, dy=10mm

Zoom Scan (7x7x11)/Cube 0: Measurement grid: dx=4mm, dy=4mm, dz=2mm

Power Drift = 0.04 dB

Peak SAR (extrapolated) = 35.873 mW/g

SAR(1 g) = 7.52 W/kg; SAR(10 g) = 2.15 W/kg



0 dB = 15.9 mW/g

DIGITAL EMC CO., LTD

DUT: Dipole 5000 MHz; Type: D5GHzV2; Serial: D5GHzV2 - SN:1103

Communication System: CW; Frequency: 5500 MHz; Duty Cycle: 1:1

Medium parameters used: $f = 5500$ MHz; $\sigma = 5.503$ mho/m; $\epsilon_r = 46.977$; $\rho = 1000$ kg/m³

Phantom section: Flat Section

DASY5 Configuration:

Probe: EX3DV4 - SN3866; ConvF(3.86, 3.86, 3.86); Calibrated: 2012-06-20; ; Electronics: DAE4 Sn1335

Phantom: SAM with CRP_20120521; Type: SAM; Serial: 1679

Measurement SW: DASY52, Version 52.8 (2); SEMCAD X Version 14.6.6 (6477)

Test Date: 2012-08-15; Ambient Temp: 22.4; Tissue Temp: 22.5

Dipole Validation

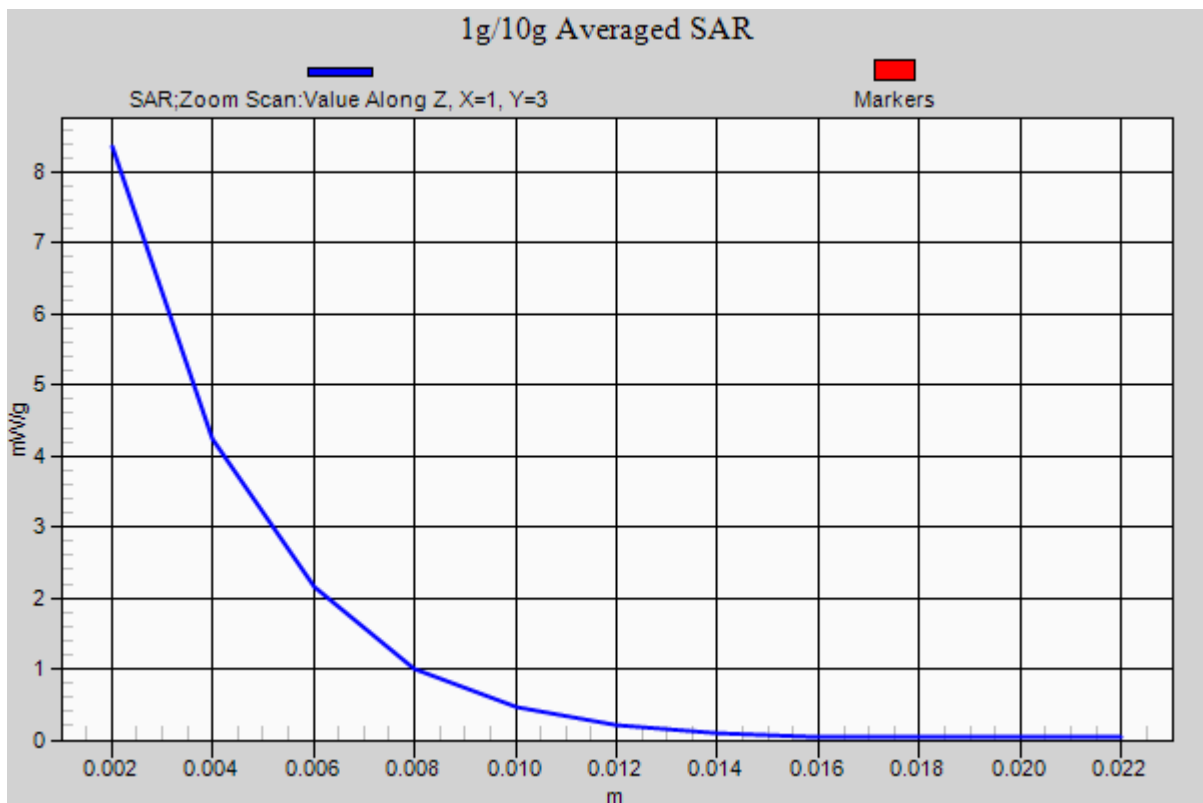
Area Scan (61x91x1): Measurement grid: dx=10mm, dy=10mm

Zoom Scan (7x7x11)/Cube 0: Measurement grid: dx=4mm, dy=4mm, dz=2mm

Power Drift = 0.04 dB

Peak SAR (extrapolated) = 35.873 mW/g

SAR(1 g) = 7.52 W/kg; SAR(10 g) = 2.15 W/kg



DIGITAL EMC CO., LTD

DUT: Dipole 5000 MHz; Type: D5GHzV2; Serial: D5GHzV2 - SN:1103

Communication System: CW; Frequency: 5800 MHz; Duty Cycle: 1:1

Medium parameters used: $f = 5800$ MHz; $\sigma = 5.474$ mho/m; $\epsilon_r = 35.782$; $\rho = 1000$ kg/m³

Phantom section: Flat Section

DASY5 Configuration:

Probe: EX3DV4 - SN3643; ConvF(4.16, 4.16, 4.16); Calibrated: 2012-01-27; ; Electronics: DAE4 Sn1335

Phantom: SAM with CRP_20120521; Type: SAM; Serial: 1679

Measurement SW: DASY52, Version 52.8 (2); SEMCAD X Version 14.6.6 (6477)

Test Date: 2012-08-16; Ambient Temp: 22.3; Tissue Temp: 22.4

Dipole Validation

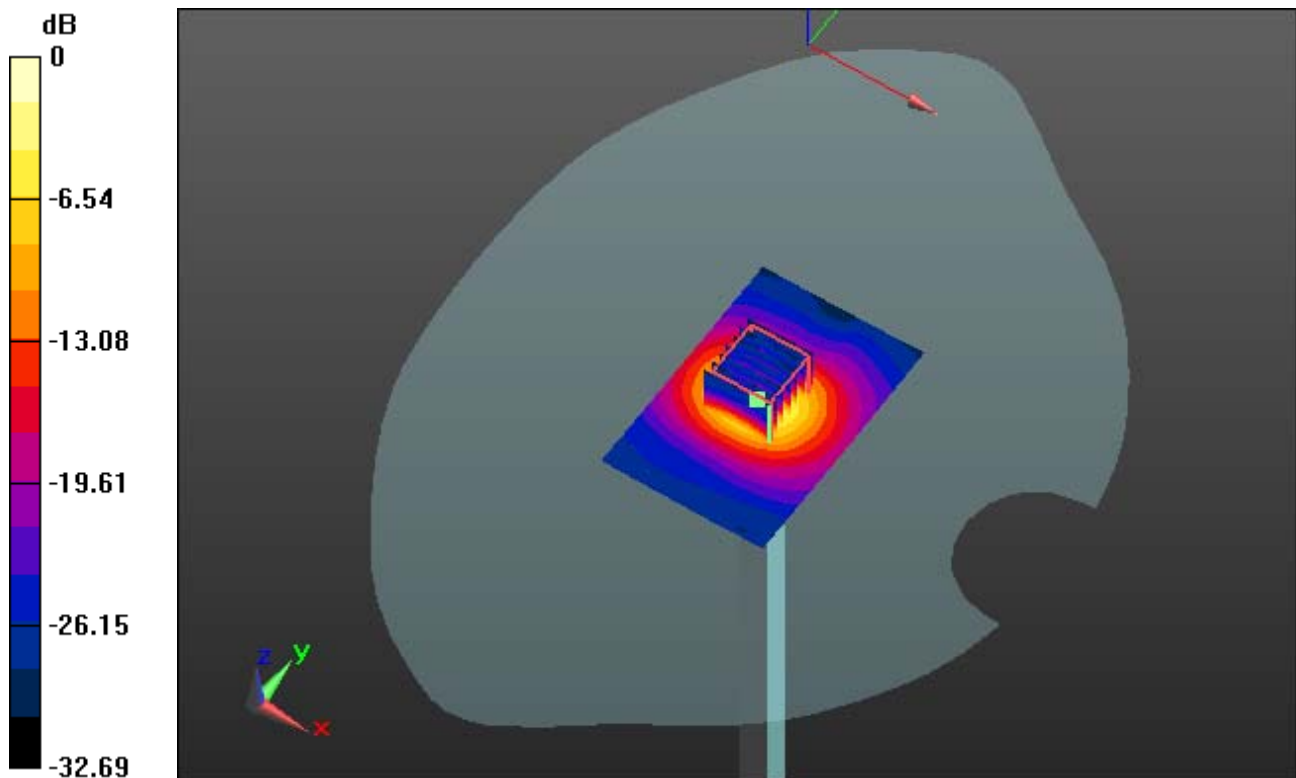
Area Scan (61x91x1): Measurement grid: dx=10mm, dy=10mm

Zoom Scan (7x7x11)/Cube 0: Measurement grid: dx=4mm, dy=4mm, dz=2mm

Power Drift = 0.05 dB

Peak SAR (extrapolated) = 36.351 mW/g

SAR(1 g) = 8.08 W/kg; SAR(10 g) = 2.33 W/kg



0 dB = 17.3 mW/g

DIGITAL EMC CO., LTD

DUT: Dipole 5000 MHz; Type: D5GHzV2; Serial: D5GHzV2 - SN:1103

Communication System: CW; Frequency: 5800 MHz; Duty Cycle: 1:1

Medium parameters used: $f = 5800$ MHz; $\sigma = 5.474$ mho/m; $\epsilon_r = 35.782$; $\rho = 1000$ kg/m³

Phantom section: Flat Section

DASY5 Configuration:

Probe: EX3DV4 - SN3643; ConvF(4.16, 4.16, 4.16); Calibrated: 2012-01-27; ; Electronics: DAE4 Sn1335

Phantom: SAM with CRP_20120521; Type: SAM; Serial: 1679

Measurement SW: DASY52, Version 52.8 (2); SEMCAD X Version 14.6.6 (6477)

Test Date: 2012-08-16; Ambient Temp: 22.3; Tissue Temp: 22.4

Dipole Validation

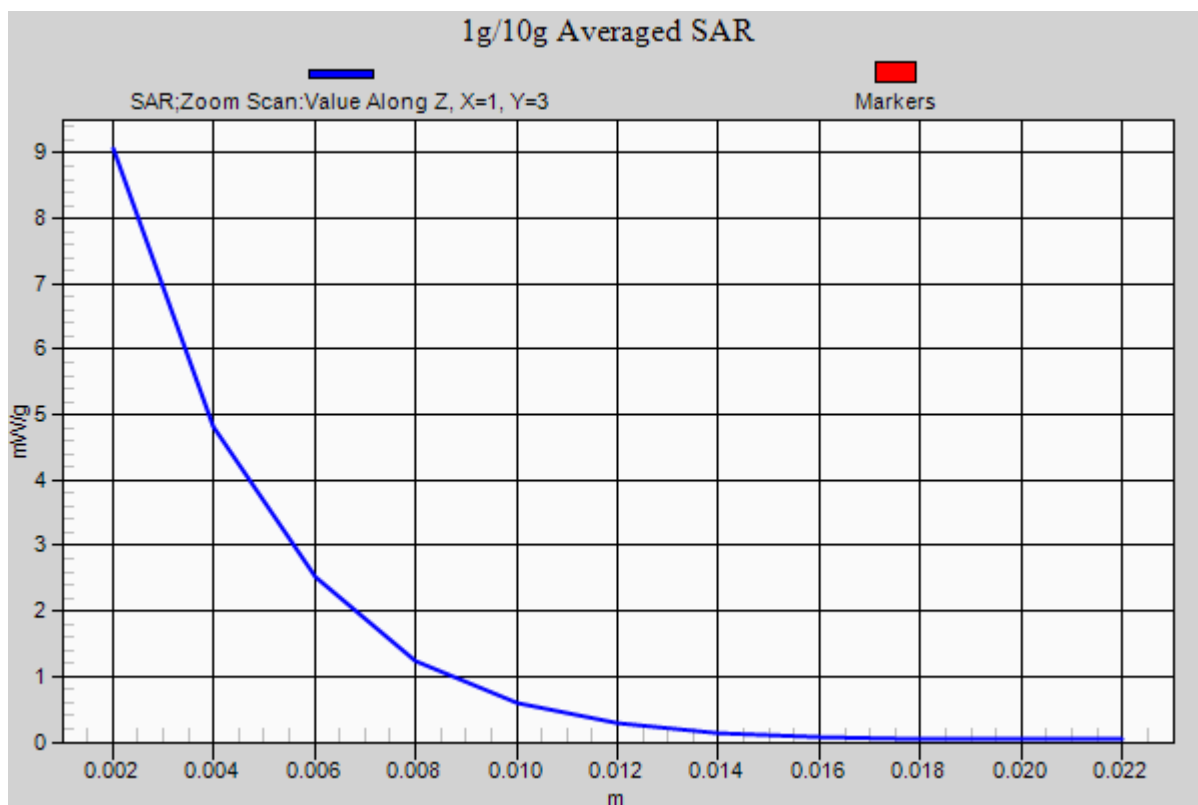
Area Scan (61x91x1): Measurement grid: dx=10mm, dy=10mm

Zoom Scan (7x7x11)/Cube 0: Measurement grid: dx=4mm, dy=4mm, dz=2mm

Power Drift = 0.05 dB

Peak SAR (extrapolated) = 36.351 mW/g

SAR(1 g) = 8.08 W/kg; SAR(10 g) = 2.33 W/kg



DIGITAL EMC CO., LTD

DUT: Dipole 5000 MHz; Type: D5GHzV2; Serial: D5GHzV2 - SN:1103

Communication System: CW; Frequency: 5800 MHz; Duty Cycle: 1:1

Medium parameters used: $f = 5800$ MHz; $\sigma = 5.906$ mho/m; $\epsilon_r = 46.613$; $\rho = 1000$ kg/m³

Phantom section: Flat Section

DASY5 Configuration:

Probe: EX3DV4 - SN3643; ConvF(3.8, 3.8, 3.8); Calibrated: 2012-01-27; ; Electronics: DAE4 Sn1335

Phantom: SAM with CRP_20120521; Type: SAM; Serial: 1679

Measurement SW: DASY52, Version 52.8 (2); SEMCAD X Version 14.6.6 (6477)

Test Date: 2012-08-15; Ambient Temp: 22.4; Tissue Temp: 22.5

Dipole Validation

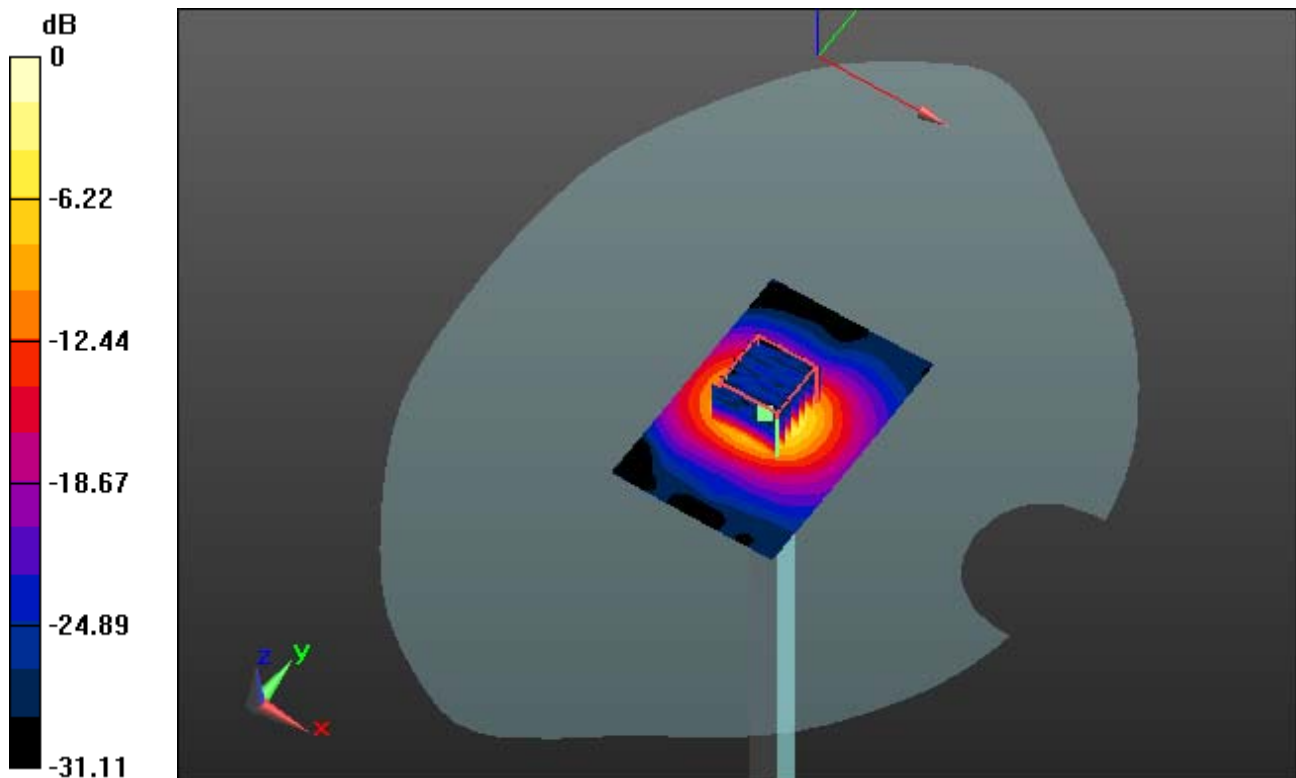
Area Scan (61x91x1): Measurement grid: dx=10mm, dy=10mm

Zoom Scan (7x7x11)/Cube 0: Measurement grid: dx=4mm, dy=4mm, dz=2mm

Power Drift = 0.03 dB

Peak SAR (extrapolated) = 33.208 mW/g

SAR(1 g) = 6.78 W/kg; SAR(10 g) = 1.95 W/kg



0 dB = 14.7 mW/g

DIGITAL EMC CO., LTD

DUT: Dipole 5000 MHz; Type: D5GHzV2; Serial: D5GHzV2 - SN:1103

Communication System: CW; Frequency: 5800 MHz; Duty Cycle: 1:1

Medium parameters used: $f = 5800$ MHz; $\sigma = 5.906$ mho/m; $\epsilon_r = 46.613$; $\rho = 1000$ kg/m³

Phantom section: Flat Section

DASY5 Configuration:

Probe: EX3DV4 - SN3643; ConvF(3.8, 3.8, 3.8); Calibrated: 2012-01-27; ; Electronics: DAE4 Sn1335

Phantom: SAM with CRP_20120521; Type: SAM; Serial: 1679

Measurement SW: DASY52, Version 52.8 (2); SEMCAD X Version 14.6.6 (6477)

Test Date: 2012-08-15; Ambient Temp: 22.4; Tissue Temp: 22.5

Dipole Validation

Area Scan (61x91x1): Measurement grid: dx=10mm, dy=10mm

Zoom Scan (7x7x11)/Cube 0: Measurement grid: dx=4mm, dy=4mm, dz=2mm

Power Drift = 0.03 dB

Peak SAR (extrapolated) = 33.208 mW/g

SAR(1 g) = 6.78 W/kg; SAR(10 g) = 1.95 W/kg

