

CDMA 2000 - BC1

Frequency: 1880 MHz; Duty Cycle: 1:1; Room Ambient Temperature: 24.0°C; Liquid Temperature: 23.0°C

Medium parameters used: $f = 1880$ MHz; $\sigma = 1.394$ mho/m; $\epsilon_r = 40.638$; $\rho = 1000$ kg/m³

DASY5 Configuration:

- Electronics: DAE4 Sn1259; Calibrated: 2/13/2012

- Probe: EX3DV4 - SN3686; ConvF(7.51, 7.51, 7.51); Calibrated: 2/16/2012

- Sensor-Surface: 2.5mm (Mechanical Surface Detection (Locations From Previous Scan Used)), Sensor-Surface: 2.5mm (Mechanical Surface Detection)

- Phantom: SAM; Type: QD000P40CD; Serial: 1629

Left/Touch_1xRTT_ch 600 16dBm 2/Area Scan (7x11x1): Measurement grid: dx=15mm, dy=15mm

Maximum value of SAR (measured) = 0.099 mW/g

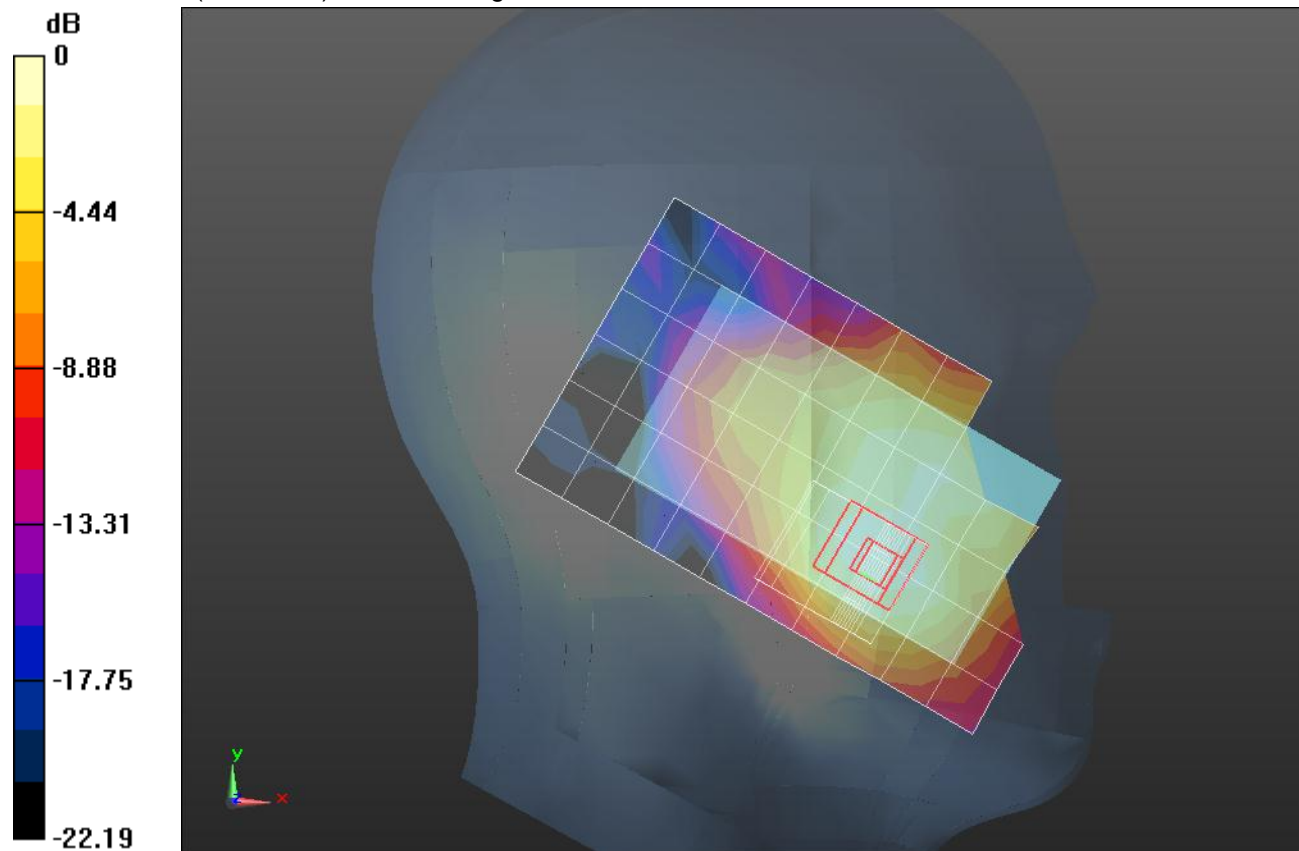
Left/Touch_1xRTT_ch 600 16dBm 2/Zoom Scan (5x5x7)/Cube 0: Measurement grid: dx=8mm, dy=8mm, dz=5mm

Reference Value = 5.526 V/m; Power Drift = 0.04 dB

Peak SAR (extrapolated) = 0.1290

SAR(1 g) = 0.086 mW/g; SAR(10 g) = 0.053 mW/g

Maximum value of SAR (measured) = 0.102 mW/g



0 dB = 0.100mW/g = -20.00 dB mW/g

CDMA 2000 - BC1

Frequency: 1880 MHz; Duty Cycle: 1:1; Room Ambient Temperature: 24.0°C; Liquid Temperature: 23.0°C

Medium parameters used: $f = 1880$ MHz; $\sigma = 1.394$ mho/m; $\epsilon_r = 40.638$; $\rho = 1000$ kg/m³

DASY5 Configuration:

- Electronics: DAE4 Sn1259; Calibrated: 2/13/2012
- Probe: EX3DV4 - SN3686; ConvF(7.51, 7.51, 7.51); Calibrated: 2/16/2012
- Sensor-Surface: 2.5mm (Mechanical Surface Detection)
- Phantom: SAM; Type: QD000P40CD; Serial: 1629

Right/Touch_1xRTT_ch 600 16dBm/Area Scan (7x11x1): Measurement grid: dx=15mm, dy=15mm

Maximum value of SAR (measured) = 0.107 mW/g

Right/Touch_1xRTT_ch 600 16dBm/Zoom Scan (5x5x7)/Cube 0: Measurement grid: dx=8mm,

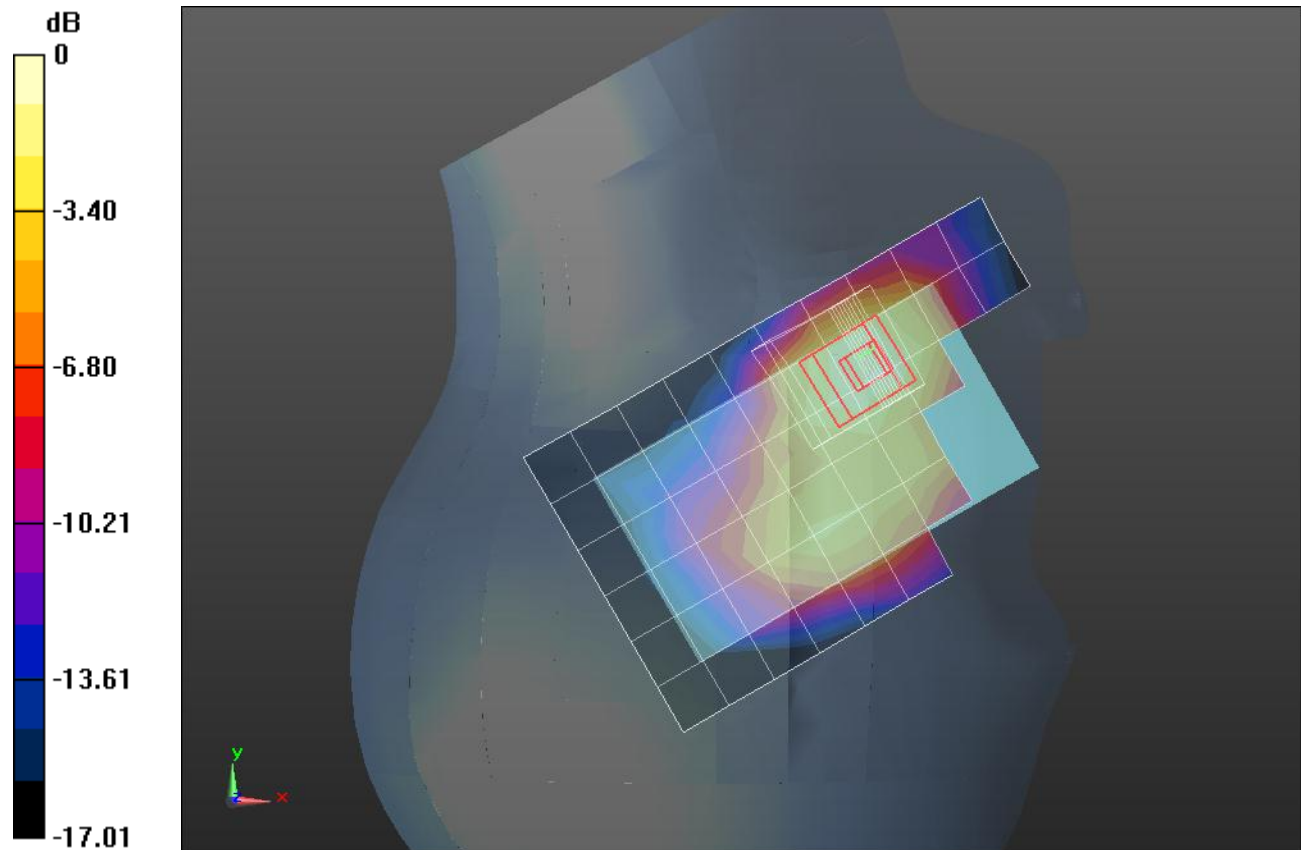
dy=8mm, dz=5mm

Reference Value = 9.095 V/m; Power Drift = 0.14 dB

Peak SAR (extrapolated) = 0.1660

SAR(1 g) = 0.106 mW/g; SAR(10 g) = 0.062 mW/g

Maximum value of SAR (measured) = 0.126 mW/g



0 dB = 0.130mW/g = -17.72 dB mW/g

CDMA2000-BC1

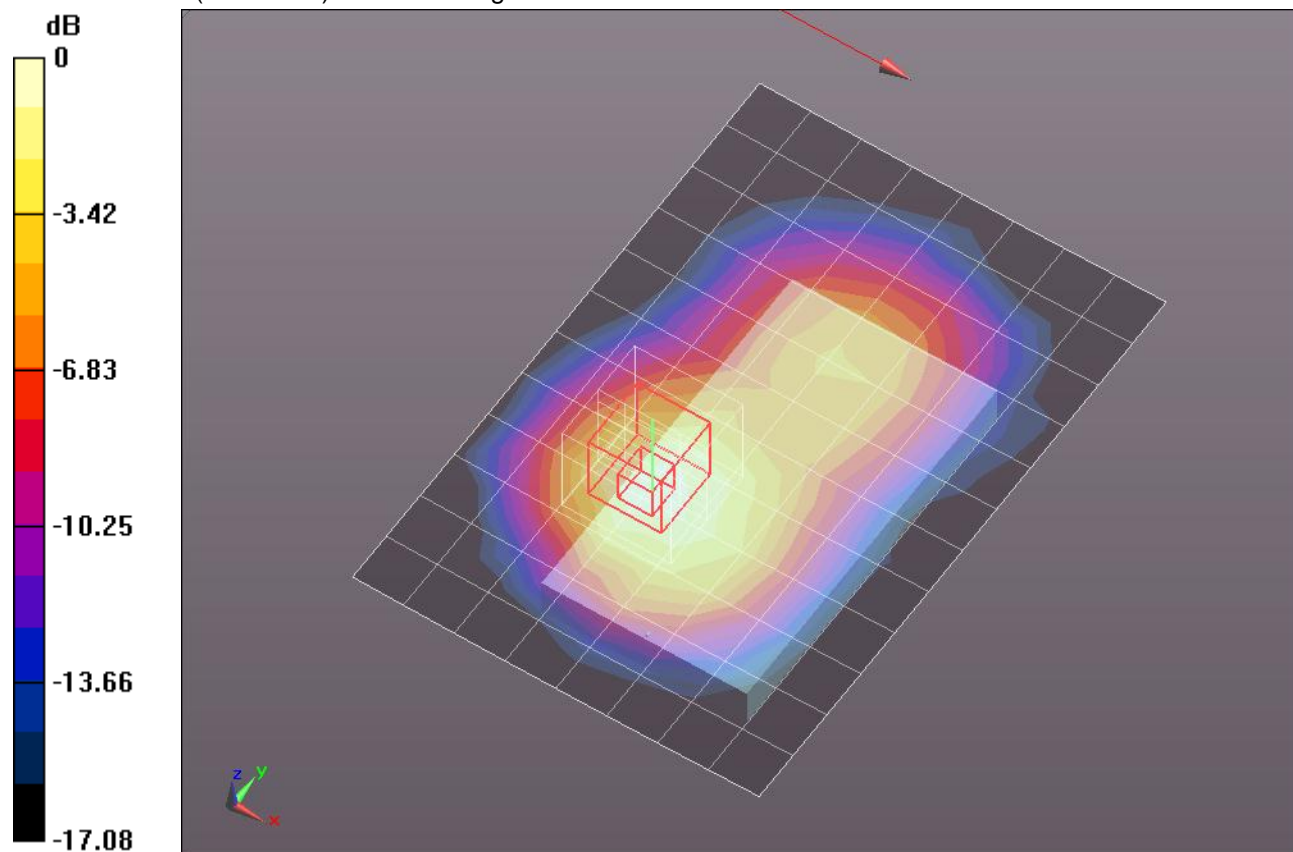
Frequency: 1880 MHz; Duty Cycle: 1:1; Room Ambient Temperature: 24.0°C; Liquid Temperature: 23.0°C
Medium parameters used: $f = 1880$ MHz; $\sigma = 1.516$ mho/m; $\epsilon_r = 51.598$; $\rho = 1000$ kg/m³

DASY5 Configuration:

- Electronics: DAE4 Sn1259; Calibrated: 2/13/2012
- Probe: EX3DV4 - SN3686; ConvF(7.04, 7.04, 7.04); Calibrated: 2/16/2012
- Sensor-Surface: 2.5mm (Mechanical Surface Detection)
- Phantom: ELI v5.0 (B); Type: QDOVA001BB; Serial: 1118

Rear/1xRTT_SO32 16dBm Ch 600/Area Scan (9x13x1): Measurement grid: dx=15mm, dy=15mm
Maximum value of SAR (measured) = 0.180 mW/g

Rear/1xRTT_SO32 16dBm Ch 600/Zoom Scan (5x5x7)/Cube 0: Measurement grid: dx=8mm, dy=8mm, dz=5mm
Reference Value = 10.777 V/m; Power Drift = 0.01 dB
Peak SAR (extrapolated) = 0.2210
SAR(1 g) = 0.141 mW/g; SAR(10 g) = 0.079 mW/g
Maximum value of SAR (measured) = 0.176 mW/g



0 dB = 0.180mW/g = -14.89 dB mW/g

CDMA 2000 - BC1

Frequency: 1880 MHz; Duty Cycle: 1:1; Room Ambient Temperature: 24.0°C; Liquid Temperature: 23.0°C
Medium parameters used: $f = 1880$ MHz; $\sigma = 1.394$ mho/m; $\epsilon_r = 40.638$; $\rho = 1000$ kg/m³

DASY5 Configuration:

- Electronics: DAE4 Sn1259; Calibrated: 2/13/2012
- Probe: EX3DV4 - SN3686; ConvF(7.51, 7.51, 7.51); Calibrated: 2/16/2012
- Sensor-Surface: 2.5mm (Mechanical Surface Detection)
- Phantom: SAM; Type: QD000P40CD; Serial: 1629

Left/Touch_1xRTT_ch 600 19dBm/Area Scan (7x11x1): Measurement grid: dx=15mm, dy=15mm
Maximum value of SAR (measured) = 0.191 mW/g

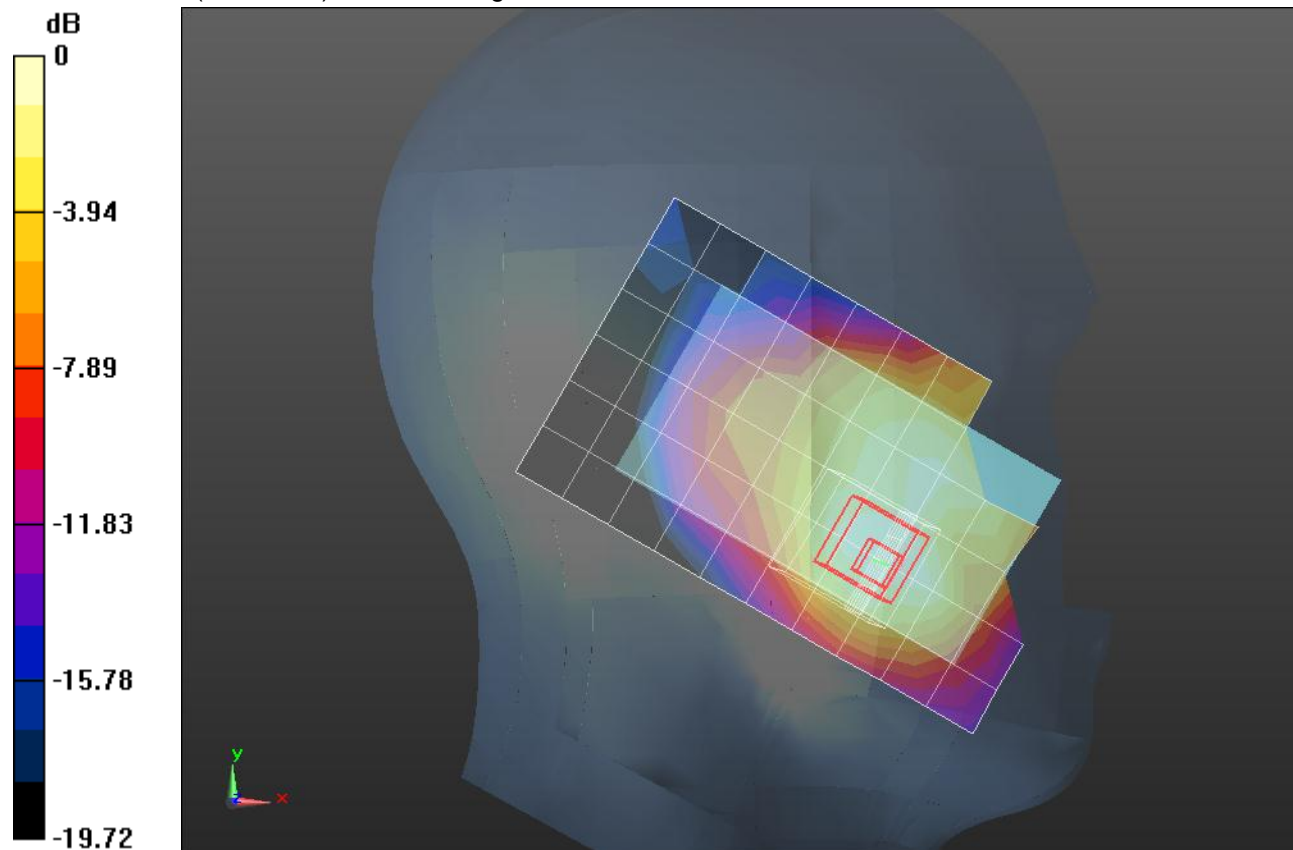
Left/Touch_1xRTT_ch 600 19dBm/Zoom Scan (5x5x7)/Cube 0: Measurement grid: dx=8mm, dy=8mm, dz=5mm

Reference Value = 11.898 V/m; Power Drift = 0.12 dB

Peak SAR (extrapolated) = 0.2470

SAR(1 g) = 0.165 mW/g; SAR(10 g) = 0.102 mW/g

Maximum value of SAR (measured) = 0.195 mW/g



0 dB = 0.190mW/g = -14.42 dB mW/g

CDMA 2000 - BC1

Frequency: 1880 MHz; Duty Cycle: 1:1; Room Ambient Temperature: 24.0°C; Liquid Temperature: 23.0°C

Medium parameters used: $f = 1880$ MHz; $\sigma = 1.394$ mho/m; $\epsilon_r = 40.638$; $\rho = 1000$ kg/m³

DASY5 Configuration:

- Electronics: DAE4 Sn1259; Calibrated: 2/13/2012

- Probe: EX3DV4 - SN3686; ConvF(7.51, 7.51, 7.51); Calibrated: 2/16/2012

- Sensor-Surface: 2.5mm (Mechanical Surface Detection (Locations From Previous Scan Used)), Sensor-Surface: 2.5mm (Mechanical Surface Detection)

- Phantom: SAM; Type: QD000P40CD; Serial: 1629

Right/Touch_1xRTT_ch 600 19dBm/Area Scan (7x11x1): Measurement grid: dx=15mm, dy=15mm

Maximum value of SAR (measured) = 0.213 mW/g

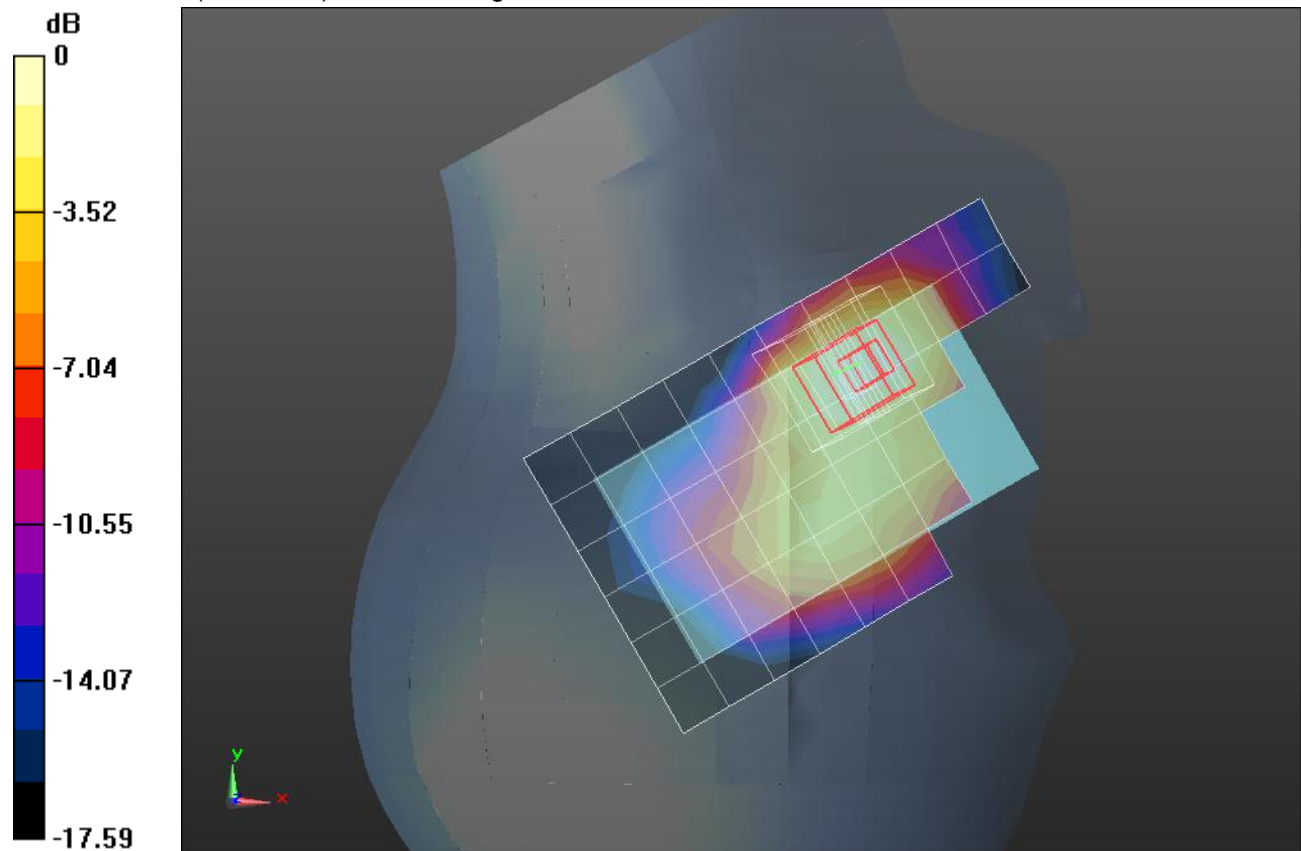
Right/Touch_1xRTT_ch 600 19dBm/Zoom Scan (5x5x7)/Cube 0: Measurement grid: dx=8mm, dy=8mm, dz=5mm

Reference Value = 12.306 V/m; Power Drift = 0.15 dB

Peak SAR (extrapolated) = 0.3000

SAR(1 g) = 0.189 mW/g; SAR(10 g) = 0.111 mW/g

Maximum value of SAR (measured) = 0.232 mW/g



0 dB = 0.230mW/g = -12.77 dB mW/g

CDMA2000-BC1

Frequency: 1880 MHz; Duty Cycle: 1:1; Room Ambient Temperature: 24.0°C; Liquid Temperature: 23.0°C
Medium parameters used: $f = 1880$ MHz; $\sigma = 1.516$ mho/m; $\epsilon_r = 51.598$; $\rho = 1000$ kg/m³

DASY5 Configuration:

- Electronics: DAE4 Sn1259; Calibrated: 2/13/2012
- Probe: EX3DV4 - SN3686; ConvF(7.04, 7.04, 7.04); Calibrated: 2/16/2012
- Sensor-Surface: 2.5mm (Mechanical Surface Detection)
- Phantom: ELI v5.0 (B); Type: QDOVA001BB; Serial: 1118

Rear/1xRTT_SO32 19dBm Ch 600/Area Scan (9x13x1): Measurement grid: dx=15mm, dy=15mm
Maximum value of SAR (measured) = 0.363 mW/g

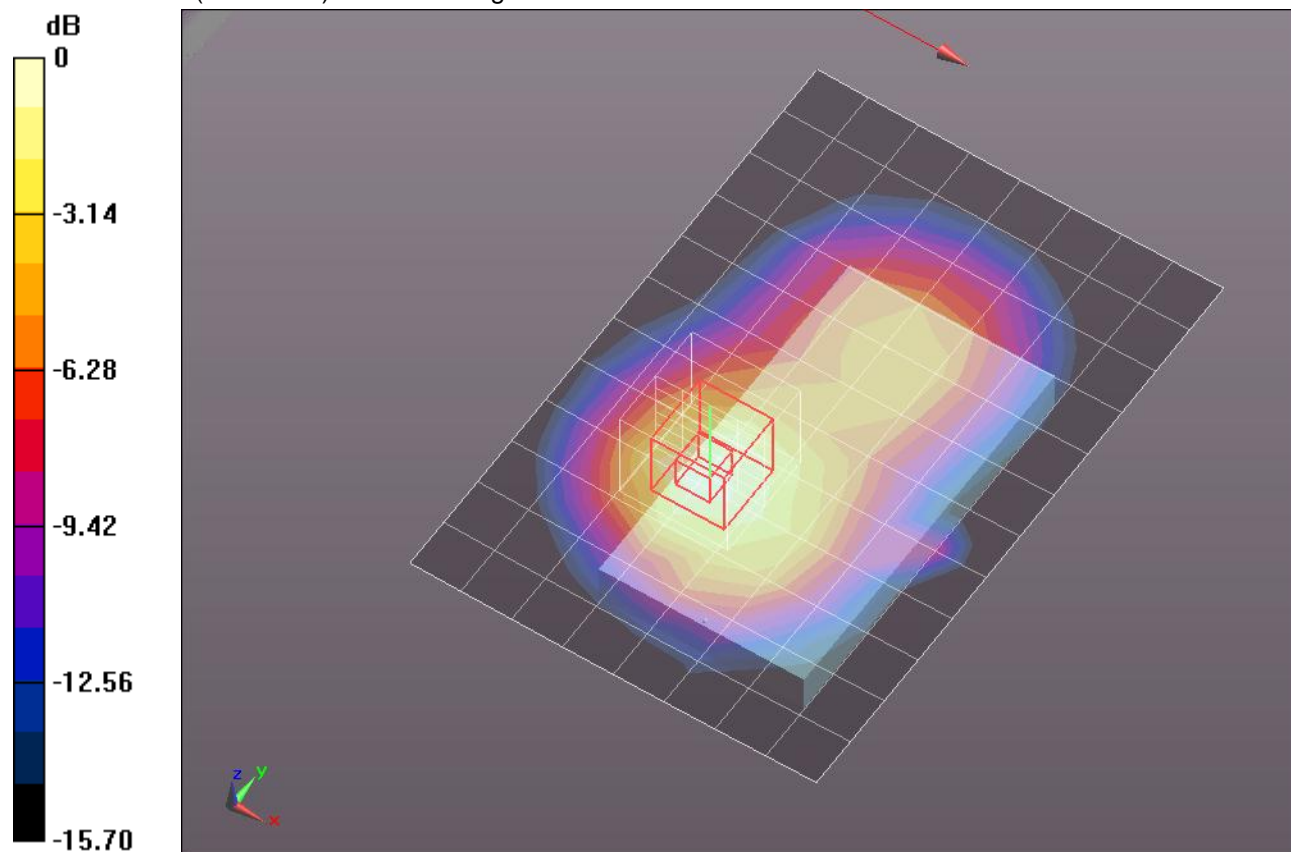
Rear/1xRTT_SO32 19dBm Ch 600/Zoom Scan (5x5x7)/Cube 0: Measurement grid: dx=8mm, dy=8mm, dz=5mm

Reference Value = 15.650 V/m; Power Drift = 0.04 dB

Peak SAR (extrapolated) = 0.4740

SAR(1 g) = 0.291 mW/g; SAR(10 g) = 0.171 mW/g

Maximum value of SAR (measured) = 0.368 mW/g



0 dB = 0.370mW/g = -8.64 dB mW/g

CDMA 2000 - BC1

Frequency: 1880 MHz; Duty Cycle: 1:1; Room Ambient Temperature: 24.0°C; Liquid Temperature: 23.0°C
Medium parameters used: $f = 1880$ MHz; $\sigma = 1.394$ mho/m; $\epsilon_r = 40.638$; $\rho = 1000$ kg/m³

DASY5 Configuration:

- Electronics: DAE4 Sn1259; Calibrated: 2/13/2012
- Probe: EX3DV4 - SN3686; ConvF(7.51, 7.51, 7.51); Calibrated: 2/16/2012
- Sensor-Surface: 2.5mm (Mechanical Surface Detection)
- Phantom: SAM; Type: QD000P40CD; Serial: 1629

Left/Touch_1xEVDO_ch 600/Area Scan (7x11x1): Measurement grid: dx=15mm, dy=15mm

Maximum value of SAR (measured) = 0.365 mW/g

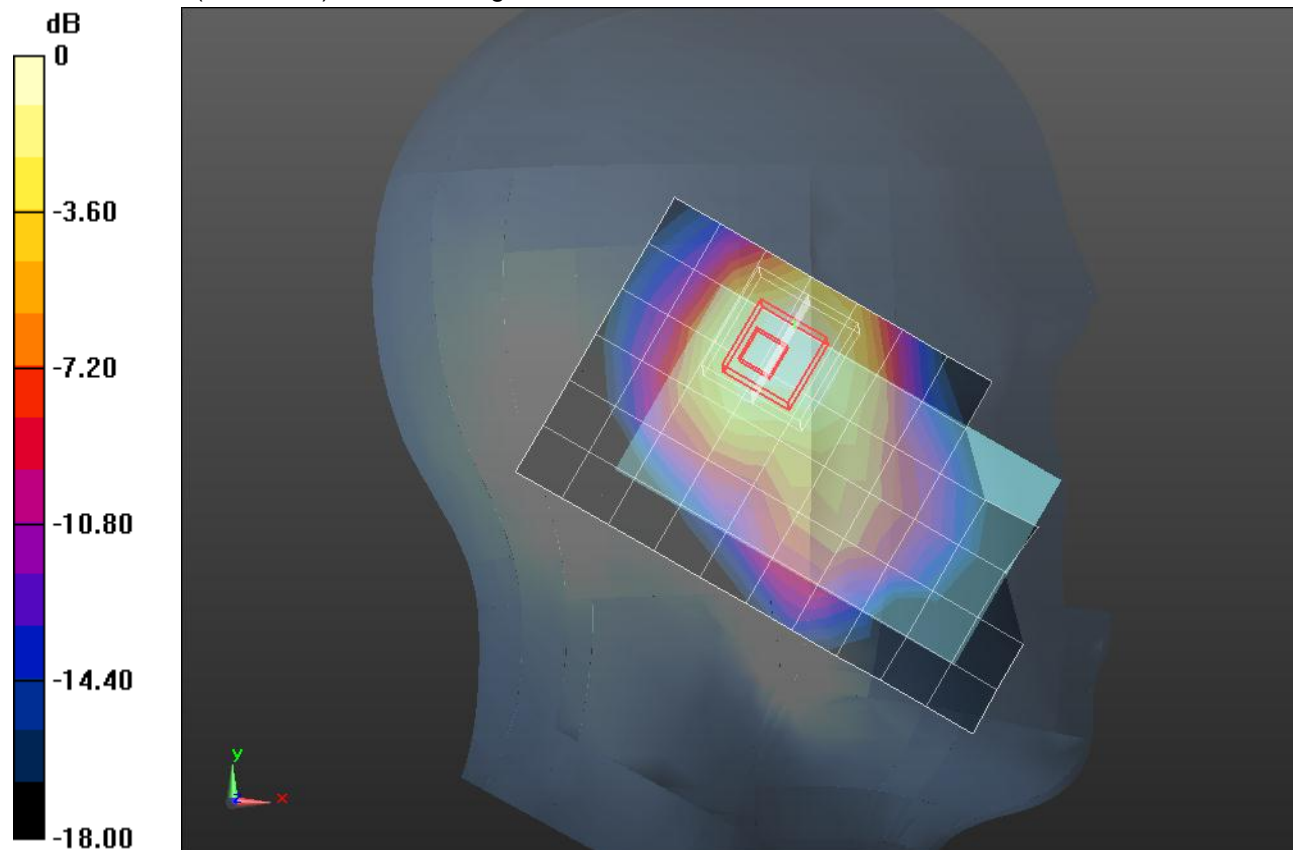
Left/Touch_1xEVDO_ch 600/Zoom Scan (5x5x7)/Cube 0: Measurement grid: dx=8mm, dy=8mm, dz=5mm

Reference Value = 16.309 V/m; Power Drift = 0.02 dB

Peak SAR (extrapolated) = 0.5220

SAR(1 g) = 0.284 mW/g; SAR(10 g) = 0.165 mW/g

Maximum value of SAR (measured) = 0.355 mW/g



0 dB = 0.350mW/g = -9.12 dB mW/g

CDMA 2000 - BC1

Frequency: 1880 MHz; Duty Cycle: 1:1; Room Ambient Temperature: 24.0°C; Liquid Temperature: 23.0°C
Medium parameters used: $f = 1880$ MHz; $\sigma = 1.394$ mho/m; $\epsilon_r = 40.638$; $\rho = 1000$ kg/m³

DASY5 Configuration:

- Electronics: DAE4 Sn1259; Calibrated: 2/13/2012
- Probe: EX3DV4 - SN3686; ConvF(7.51, 7.51, 7.51); Calibrated: 2/16/2012
- Sensor-Surface: 2.5mm (Mechanical Surface Detection (Locations From Previous Scan Used)), Sensor-Surface: 2.5mm (Mechanical Surface Detection)
- Phantom: SAM; Type: QD000P40CD; Serial: 1629

Right/Touch_1xEVDO_ch 600/Area Scan (7x11x1): Measurement grid: dx=15mm, dy=15mm

Maximum value of SAR (measured) = 0.253 mW/g

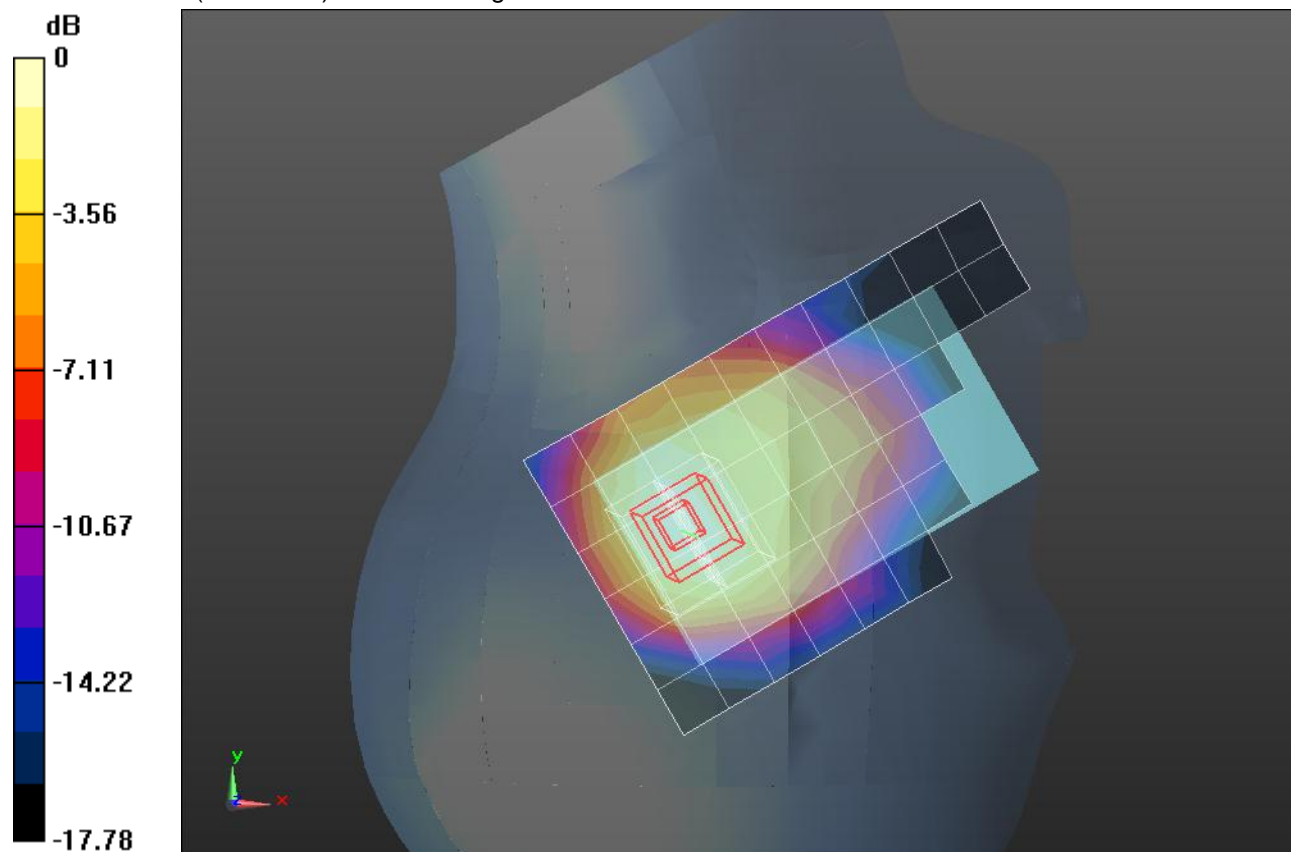
Right/Touch_1xEVDO_ch 600/Zoom Scan (5x5x7)/Cube 0: Measurement grid: dx=8mm, dy=8mm, dz=5mm

Reference Value = 13.291 V/m; Power Drift = -0.02 dB

Peak SAR (extrapolated) = 0.3320

SAR(1 g) = 0.207 mW/g; SAR(10 g) = 0.126 mW/g

Maximum value of SAR (measured) = 0.260 mW/g



0 dB = 0.260mW/g = -11.70 dB mW/g

CDMA2000-BC1

Frequency: 1880 MHz; Duty Cycle: 1:1; Room Ambient Temperature: 24.0°C; Liquid Temperature: 23.0°C
Medium parameters used: $f = 1880$ MHz; $\sigma = 1.516$ mho/m; $\epsilon_r = 51.598$; $\rho = 1000$ kg/m³

DASY5 Configuration:

- Electronics: DAE4 Sn1259; Calibrated: 2/13/2012
- Probe: EX3DV4 - SN3686; ConvF(7.04, 7.04, 7.04); Calibrated: 2/16/2012
- Sensor-Surface: 2.5mm (Mechanical Surface Detection)
- Phantom: ELI v5.0 (B); Type: QDOVA001BB; Serial: 1118

Rear/1xEvDO_Rel.0_19dBm Ch 600/Area Scan (9x13x1): Measurement grid: dx=15mm, dy=15mm
Maximum value of SAR (measured) = 0.361 mW/g

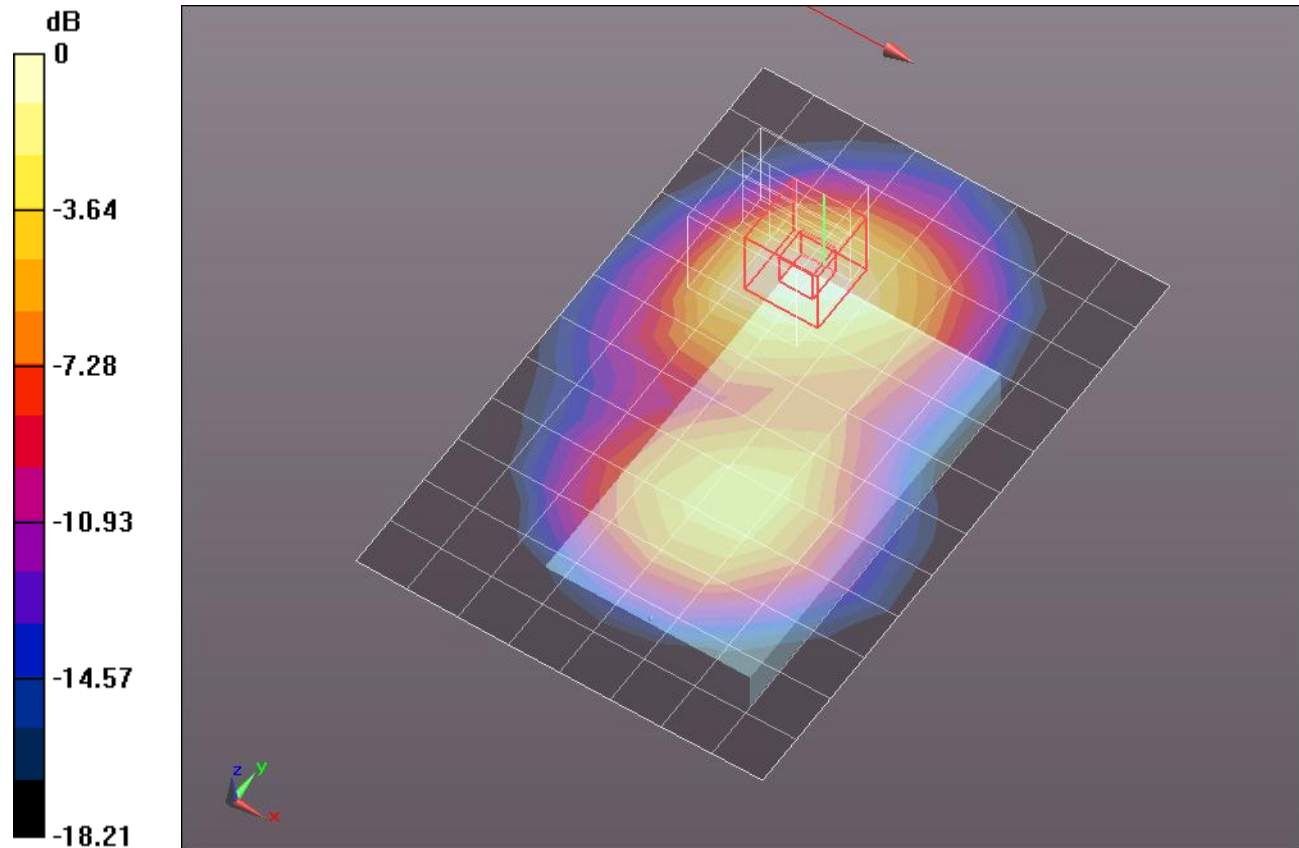
Rear/1xEvDO_Rel.0_19dBm Ch 600/Zoom Scan (5x5x7)/Cube 0: Measurement grid: dx=8mm, dy=8mm, dz=5mm

Reference Value = 15.602 V/m; Power Drift = -0.03 dB

Peak SAR (extrapolated) = 0.4930

SAR(1 g) = 0.279 mW/g; SAR(10 g) = 0.159 mW/g

Maximum value of SAR (measured) = 0.349 mW/g



0 dB = 0.350mW/g = -9.12 dB mW/g