

## HAC-RF Emission

Communication System: GPRS-FDD (TDMA, GMSK 1 slot); Frequency: 824.4 MHz; Duty Cycle: 1:8.70964

Phantom section: RF Section

DASY5 Configuration:

- Probe: ER3DV6 - SN2509; ConvF(1, 1, 1); Calibrated: 6/20/2012;
- Sensor-Surface: (Fix Surface)
- Electronics: DAE4 Sn1239; Calibrated: 6/6/2012
- Phantom: HAC Test Arch with AMCC; Type: SD HAC P01 BB
- Measurement SW: DASY52, Version 52.8 (5);SEMCAD X Version 14.6.8 (7028)

**GSM850/Voice\_ch 128/Hearing Aid Compatibility Test (101x101x1):** Interpolated grid: dx=0.5000 mm, dy=0.5000 mm

Device Reference Point: 0, 0, -6.3 mm

Reference Value = 77.99 V/m; Power Drift = -0.11 dB

Applied MIF = 3.60 dB

RF audio interference level = 38.79 dBV/m

**Emission category: M4**

MIF scaled E-field

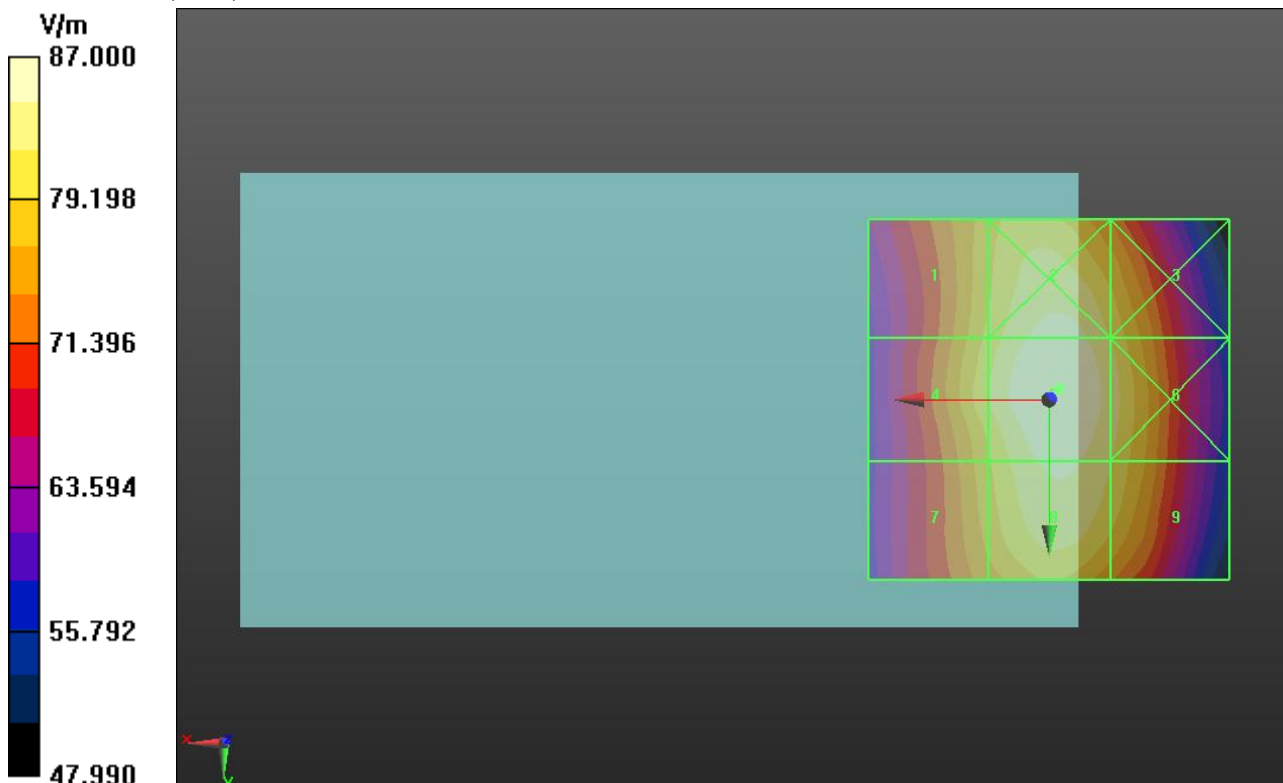
|  |  |  |
|--|--|--|
| Grid 1 <b>M4</b><br><b>38.06 dBV/m</b> | Grid 2 <b>M4</b><br><b>38.64 dBV/m</b> | Grid 3 <b>M4</b><br><b>38.24 dBV/m</b> |
| Grid 4 <b>M4</b><br><b>38.25 dBV/m</b> | Grid 5 <b>M4</b><br><b>38.79 dBV/m</b> | Grid 6 <b>M4</b><br><b>38.41 dBV/m</b> |
| Grid 7 <b>M4</b><br><b>37.94 dBV/m</b> | Grid 8 <b>M4</b><br><b>38.59 dBV/m</b> | Grid 9 <b>M4</b><br><b>38.27 dBV/m</b> |

**Cursor:**

Total = 38.79 dBV/m

E Category: M4

Location: -1.5, -1.5, 8.7 mm



## HAC-RF Emission

Communication System: GPRS-FDD (TDMA, GMSK 1 slot); Frequency: 836.6 MHz; Duty Cycle: 1:8.70964

Phantom section: RF Section

DASY5 Configuration:

- Probe: ER3DV6 - SN2509; ConvF(1, 1, 1); Calibrated: 6/20/2012;
- Sensor-Surface: (Fix Surface)
- Electronics: DAE4 Sn1239; Calibrated: 6/6/2012
- Phantom: HAC Test Arch with AMCC; Type: SD HAC P01 BB
- Measurement SW: DASY52, Version 52.8 (5); SEMCAD X Version 14.6.8 (7028)

### GSM850/Voice\_ch 190/Hearing Aid Compatibility Test (101x101x1): Interpolated grid: dx=0.5000

mm, dy=0.5000 mm

Device Reference Point: 0, 0, -6.3 mm

Reference Value = 93.67 V/m; Power Drift = -0.25 dB

Applied MIF = 3.60 dB

RF audio interference level = 40.32 dBV/m

**Emission category: M3**

MIF scaled E-field

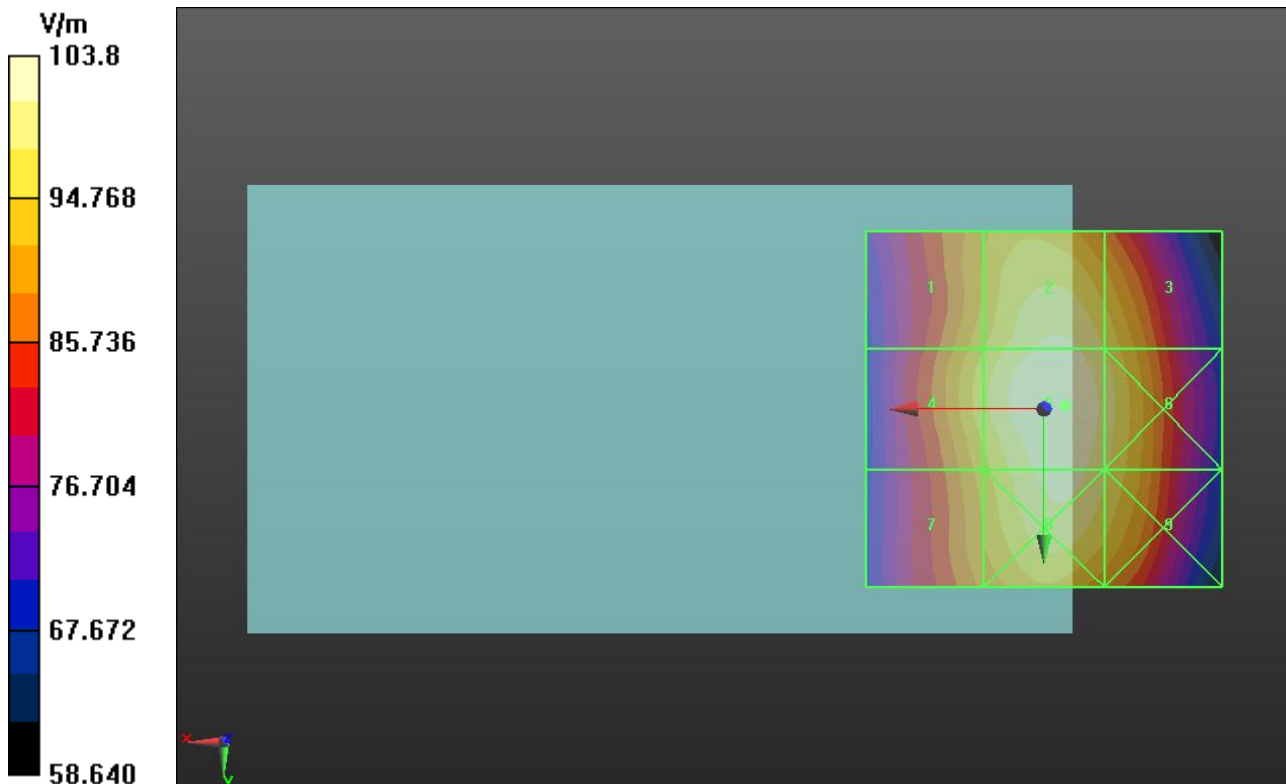
|  |  |  |
|--|--|--|
| Grid 1 <b>M4</b><br><b>39.52 dBV/m</b> | Grid 2 <b>M3</b><br><b>40.14 dBV/m</b> | Grid 3 <b>M4</b><br><b>39.81 dBV/m</b> |
| Grid 4 <b>M4</b><br><b>39.73 dBV/m</b> | Grid 5 <b>M3</b><br><b>40.32 dBV/m</b> | Grid 6 <b>M4</b><br><b>39.99 dBV/m</b> |
| Grid 7 <b>M4</b><br><b>39.43 dBV/m</b> | Grid 8 <b>M3</b><br><b>40.17 dBV/m</b> | Grid 9 <b>M4</b><br><b>39.87 dBV/m</b> |

**Cursor:**

Total = 40.32 dBV/m

E Category: M3

Location: -3, -0.5, 8.7 mm



## HAC-RF Emission

Communication System: GPRS-FDD (TDMA, GMSK 1 slot); Frequency: 848.8 MHz; Duty Cycle: 1:8.70964

Phantom section: RF Section

DASY5 Configuration:

- Probe: ER3DV6 - SN2509; ConvF(1, 1, 1); Calibrated: 6/20/2012;
- Sensor-Surface: (Fix Surface)
- Electronics: DAE4 Sn1239; Calibrated: 6/6/2012
- Phantom: HAC Test Arch with AMCC; Type: SD HAC P01 BB
- Measurement SW: DASY52, Version 52.8 (5); SEMCAD X Version 14.6.8 (7028)

### GSM850/Voice\_ch 251/Hearing Aid Compatibility Test (101x101x1): Interpolated grid: dx=0.5000

mm, dy=0.5000 mm

Device Reference Point: 0, 0, -6.3 mm

Reference Value = 88.16 V/m; Power Drift = 0.01 dB

Applied MIF = 3.60 dB

RF audio interference level = 40.00 dBV/m

Emission category: **M3**

MIF scaled E-field

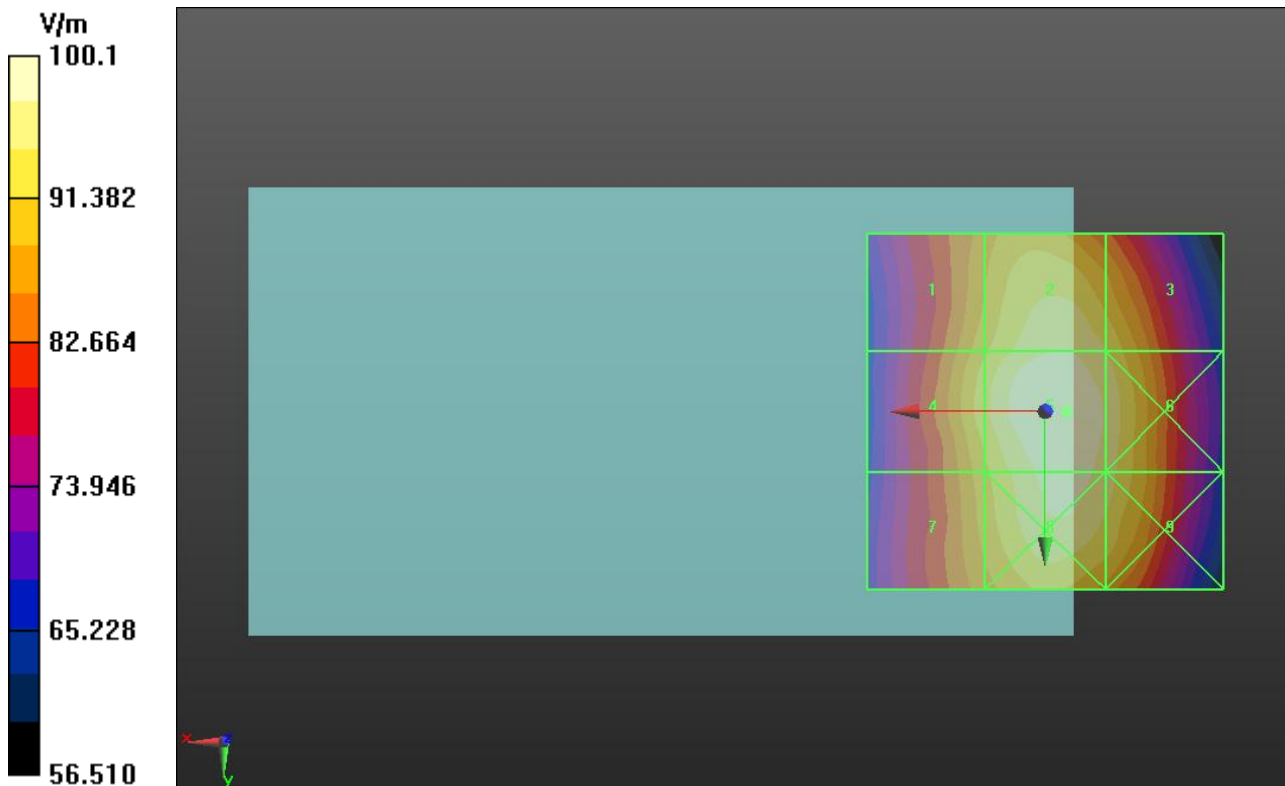
|  |  |  |
|--|--|--|
| Grid 1 <b>M4</b><br><b>39.18 dBV/m</b> | Grid 2 <b>M4</b><br><b>39.76 dBV/m</b> | Grid 3 <b>M4</b><br><b>39.5 dBV/m</b>  |
| Grid 4 <b>M4</b><br><b>39.42 dBV/m</b> | Grid 5 <b>M3</b><br><b>40 dBV/m</b>    | Grid 6 <b>M4</b><br><b>39.73 dBV/m</b> |
| Grid 7 <b>M4</b><br><b>39.15 dBV/m</b> | Grid 8 <b>M4</b><br><b>39.87 dBV/m</b> | Grid 9 <b>M4</b><br><b>39.63 dBV/m</b> |

**Cursor:**

Total = 40.00 dBV/m

E Category: M3

Location: -3, 0, 8.7 mm



## HAC-RF Emission

Communication System: GPRS-FDD (TDMA, GMSK 1 slot); Frequency: 1850.2 MHz; Duty Cycle: 1:8.70964

Phantom section: RF Section

DASY5 Configuration:

- Probe: ER3DV6 - SN2509; ConvF(1, 1, 1); Calibrated: 6/20/2012;
- Sensor-Surface: (Fix Surface)
- Electronics: DAE4 Sn1239; Calibrated: 6/6/2012
- Phantom: HAC Test Arch with AMCC; Type: SD HAC P01 BB
- Measurement SW: DASY52, Version 52.8 (5); SEMCAD X Version 14.6.8 (7028)

### PCS1900/Voice\_ch 512/Hearing Aid Compatibility Test (101x101x1): Interpolated grid: dx=0.5000

mm, dy=0.5000 mm

Device Reference Point: 0, 0, -6.3 mm

Reference Value = 17.35 V/m; Power Drift = 0.08 dB

Applied MIF = 3.60 dB

RF audio interference level = 27.86 dBV/m

**Emission category: M4**

MIF scaled E-field

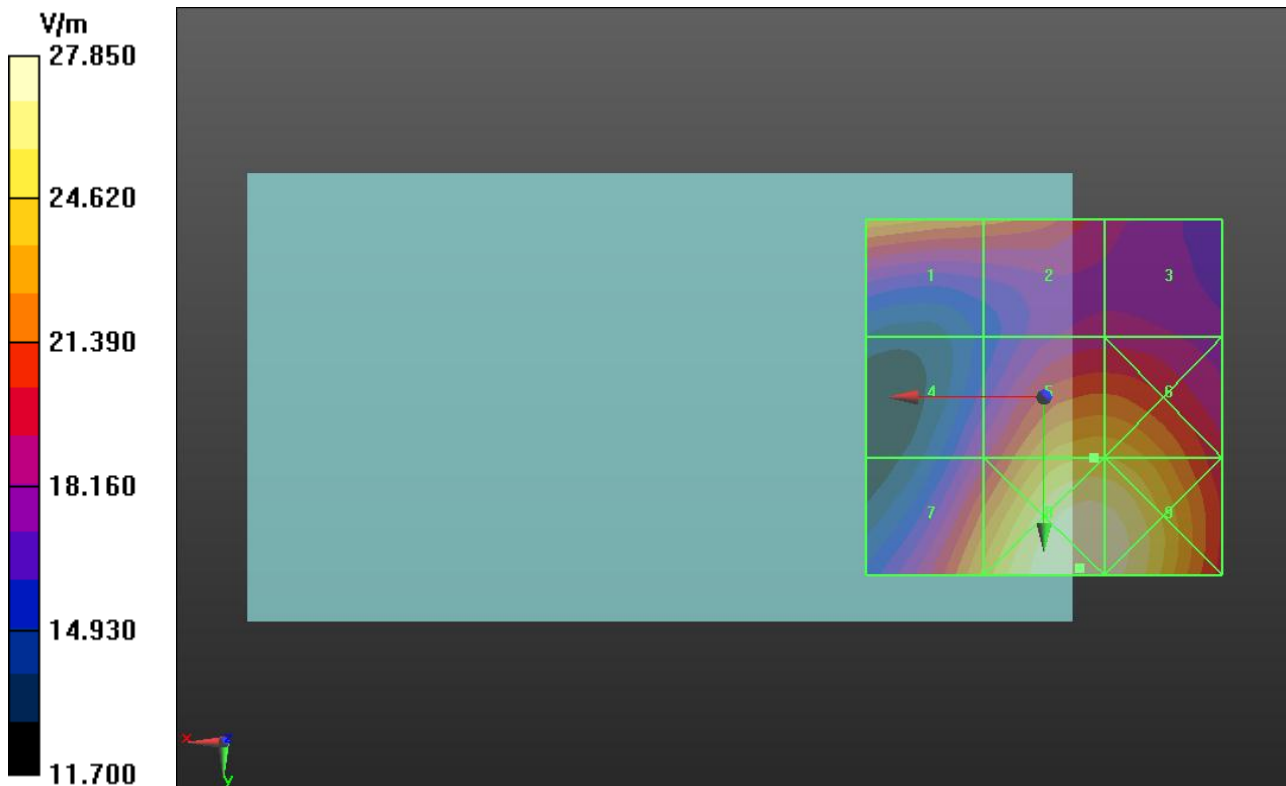
|  |  |  |
|--|--|--|
| Grid 1 <b>M4</b><br><b>27.37 dBV/m</b> | Grid 2 <b>M4</b><br><b>26.82 dBV/m</b> | Grid 3 <b>M4</b><br><b>25.51 dBV/m</b> |
| Grid 4 <b>M4</b><br><b>25.55 dBV/m</b> | Grid 5 <b>M4</b><br><b>27.86 dBV/m</b> | Grid 6 <b>M4</b><br><b>27.85 dBV/m</b> |
| Grid 7 <b>M4</b><br><b>27.57 dBV/m</b> | Grid 8 <b>M4</b><br><b>28.9 dBV/m</b>  | Grid 9 <b>M4</b><br><b>28.82 dBV/m</b> |

**Cursor:**

Total = 28.90 dBV/m

E Category: M4

Location: -5, 24, 8.7 mm



## HAC-RF Emission

Communication System: GPRS-FDD (TDMA, GMSK 1 slot); Frequency: 1880 MHz; Duty Cycle: 1:8.70964

Phantom section: RF Section

DASY5 Configuration:

- Probe: ER3DV6 - SN2509; ConvF(1, 1, 1); Calibrated: 6/20/2012;
- Sensor-Surface: (Fix Surface)
- Electronics: DAE4 Sn1239; Calibrated: 6/6/2012
- Phantom: HAC Test Arch with AMCC; Type: SD HAC P01 BB
- Measurement SW: DASY52, Version 52.8 (5); SEMCAD X Version 14.6.8 (7028)

### PCS1900/Voice\_ch 661/Hearing Aid Compatibility Test (101x101x1): Interpolated grid: dx=0.5000

mm, dy=0.5000 mm

Device Reference Point: 0, 0, -6.3 mm

Reference Value = 20.77 V/m; Power Drift = -0.05 dB

Applied MIF = 3.60 dB

RF audio interference level = 29.20 dBV/m

**Emission category: M4**

MIF scaled E-field

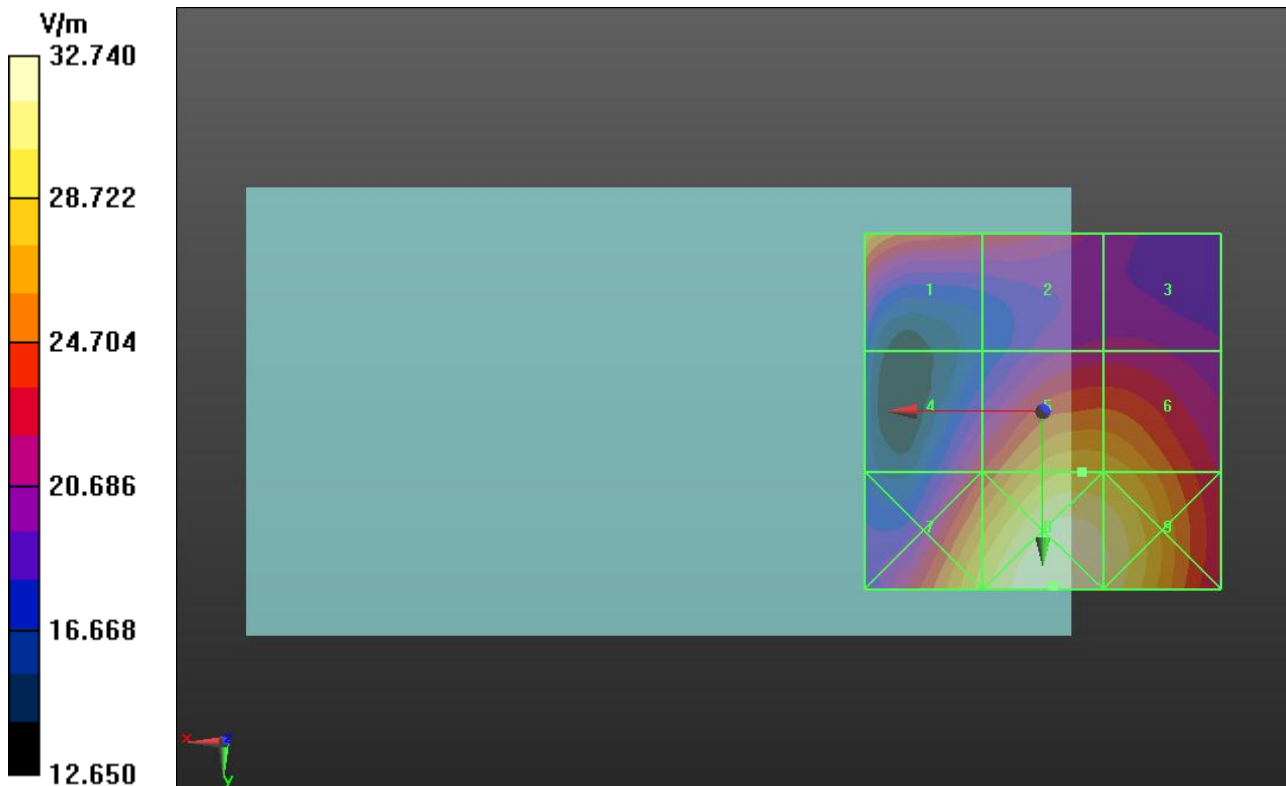
|  |  |  |
|--|--|--|
| Grid 1 <b>M4</b><br><b>28.78 dBV/m</b> | Grid 2 <b>M4</b><br><b>27.41 dBV/m</b> | Grid 3 <b>M4</b><br><b>26.58 dBV/m</b> |
| Grid 4 <b>M4</b><br><b>27.39 dBV/m</b> | Grid 5 <b>M4</b><br><b>29.2 dBV/m</b>  | Grid 6 <b>M4</b><br><b>29.12 dBV/m</b> |
| Grid 7 <b>M4</b><br><b>29.38 dBV/m</b> | Grid 8 <b>M3</b><br><b>30.3 dBV/m</b>  | Grid 9 <b>M3</b><br><b>30 dBV/m</b>    |

**Cursor:**

Total = 30.30 dBV/m

E Category: M3

Location: -1.5, 24.5, 8.7 mm



## HAC-RF Emission

Communication System: GPRS-FDD (TDMA, GMSK 1 slot); Frequency: 1909.8 MHz; Duty Cycle: 1:8.70964

Phantom section: RF Section

DASY5 Configuration:

- Probe: ER3DV6 - SN2509; ConvF(1, 1, 1); Calibrated: 6/20/2012;
- Sensor-Surface: (Fix Surface)
- Electronics: DAE4 Sn1239; Calibrated: 6/6/2012
- Phantom: HAC Test Arch with AMCC; Type: SD HAC P01 BB
- Measurement SW: DASY52, Version 52.8 (5); SEMCAD X Version 14.6.8 (7028)

### PCS1900/Voice\_ch 810/Hearing Aid Compatibility Test (101x101x1): Interpolated grid: dx=0.5000

mm, dy=0.5000 mm

Device Reference Point: 0, 0, -6.3 mm

Reference Value = 22.70 V/m; Power Drift = -0.12 dB

Applied MIF = 3.60 dB

RF audio interference level = 30.06 dBV/m

**Emission category: M3**

MIF scaled E-field

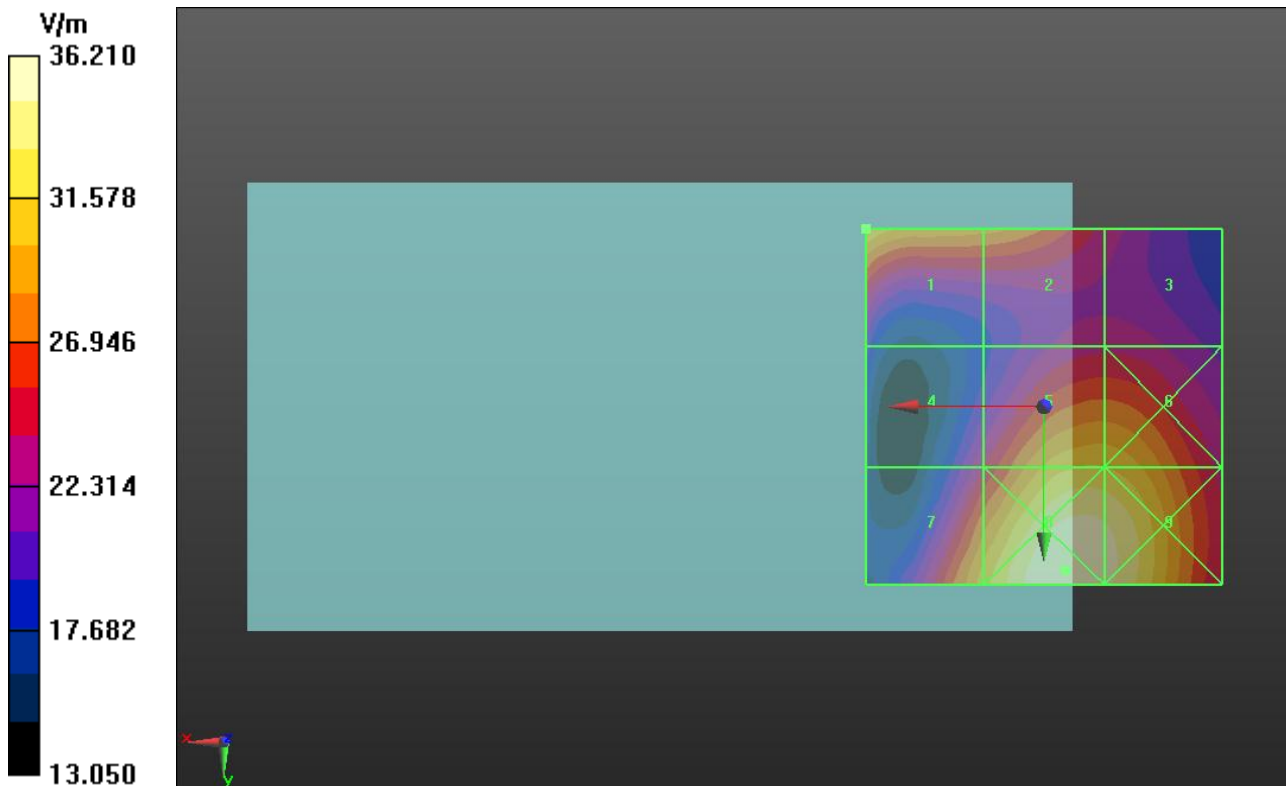
|  |  |  |
|--|--|--|
| Grid 1 <b>M3</b><br><b>30.06 dBV/m</b> | Grid 2 <b>M4</b><br><b>29.29 dBV/m</b> | Grid 3 <b>M4</b><br><b>27.43 dBV/m</b> |
| Grid 4 <b>M4</b><br><b>27.59 dBV/m</b> | Grid 5 <b>M3</b><br><b>30.04 dBV/m</b> | Grid 6 <b>M3</b><br><b>30 dBV/m</b>    |
| Grid 7 <b>M4</b><br><b>29.83 dBV/m</b> | Grid 8 <b>M3</b><br><b>31.18 dBV/m</b> | Grid 9 <b>M3</b><br><b>30.98 dBV/m</b> |

**Cursor:**

Total = 31.18 dBV/m

E Category: M3

Location: -3, 23, 8.7 mm



## HAC-RF Emission

Communication System: UMTS-FDD (WCDMA); Frequency: 1852.4 MHz; Duty Cycle: 1:2.18776

Phantom section: RF Section

DASY5 Configuration:

- Probe: ER3DV6 - SN2509; ConvF(1, 1, 1); Calibrated: 6/20/2012;
- Sensor-Surface: (Fix Surface)
- Electronics: DAE4 Sn1239; Calibrated: 6/6/2012
- Phantom: HAC Test Arch with AMCC; Type: SD HAC P01 BB
- Measurement SW: DASY52, Version 52.8 (5); SEMCAD X Version 14.6.8 (7028)

### W-CDMA Band II/RMC Rel 99 ch 9662/Hearing Aid Compatibility Test (101x101x1):

Interpolated grid: dx=0.5000 mm, dy=0.5000 mm

Device Reference Point: 0, 0, -6.3 mm

Reference Value = 27.21 V/m; Power Drift = -0.00 dB

Applied MIF = -20.49 dB

RF audio interference level = 7.45 dBV/m

**Emission category: M4**

MIF scaled E-field

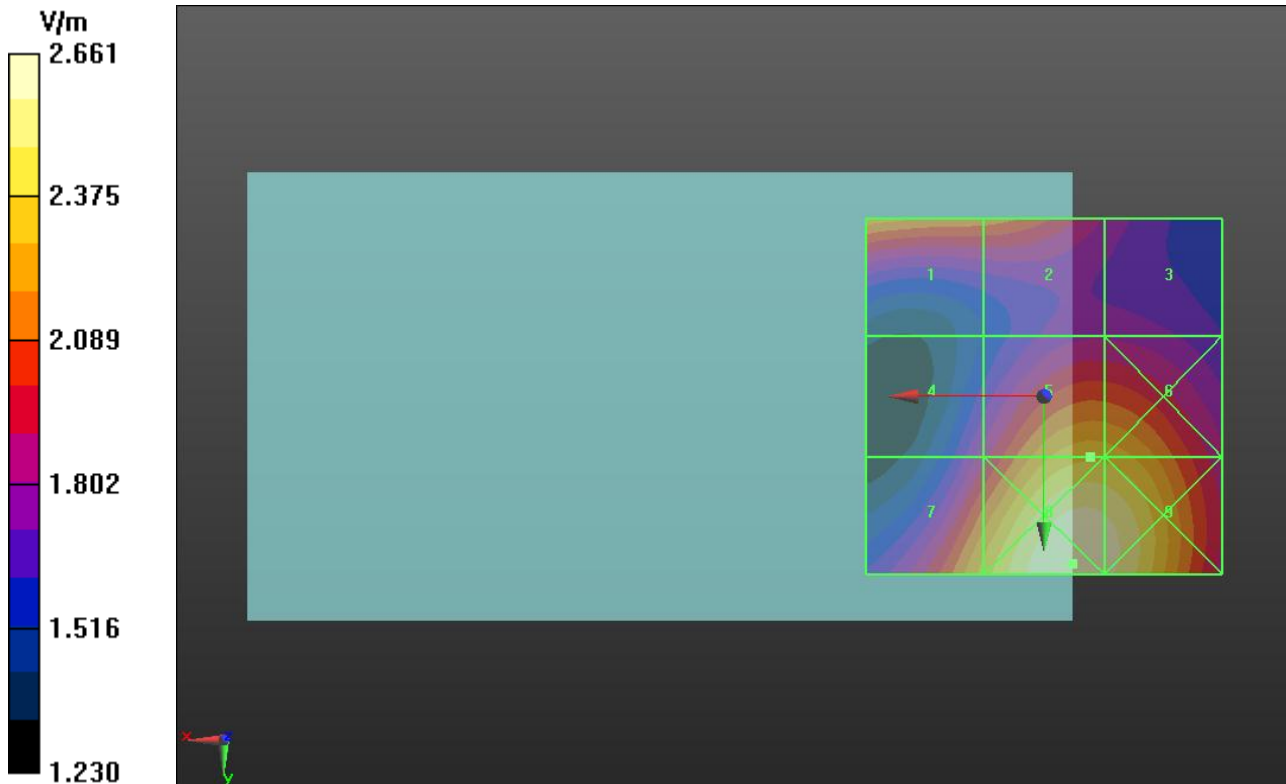
|                                       |                                       |                                       |
|---------------------------------------|---------------------------------------|---------------------------------------|
| Grid 1 <b>M4</b><br><b>7.06 dBV/m</b> | Grid 2 <b>M4</b><br><b>6.67 dBV/m</b> | Grid 3 <b>M4</b><br><b>5.1 dBV/m</b>  |
| Grid 4 <b>M4</b><br><b>5.42 dBV/m</b> | Grid 5 <b>M4</b><br><b>7.45 dBV/m</b> | Grid 6 <b>M4</b><br><b>7.42 dBV/m</b> |
| Grid 7 <b>M4</b><br><b>7.34 dBV/m</b> | Grid 8 <b>M4</b><br><b>8.5 dBV/m</b>  | Grid 9 <b>M4</b><br><b>8.36 dBV/m</b> |

**Cursor:**

Total = 8.50 dBV/m

E Category: M4

Location: -4, 23.5, 8.7 mm



## HAC-RF Emission

Communication System: UMTS-FDD (WCDMA); Frequency: 1880 MHz; Duty Cycle: 1:2.18776

Phantom section: RF Section

DASY5 Configuration:

- Probe: ER3DV6 - SN2509; ConvF(1, 1, 1); Calibrated: 6/20/2012;
- Sensor-Surface: (Fix Surface)
- Electronics: DAE4 Sn1239; Calibrated: 6/6/2012
- Phantom: HAC Test Arch with AMCC; Type: SD HAC P01 BB
- Measurement SW: DASY52, Version 52.8 (5); SEMCAD X Version 14.6.8 (7028)

## W-CDMA Band II/RMC Rel 99 ch 9400/Hearing Aid Compatibility Test (101x101x1):

Interpolated grid: dx=0.5000 mm, dy=0.5000 mm

Device Reference Point: 0, 0, -6.3 mm

Reference Value = 30.86 V/m; Power Drift = 0.07 dB

Applied MIF = -20.49 dB

RF audio interference level = 8.77 dBV/m

**Emission category: M4**

MIF scaled E-field

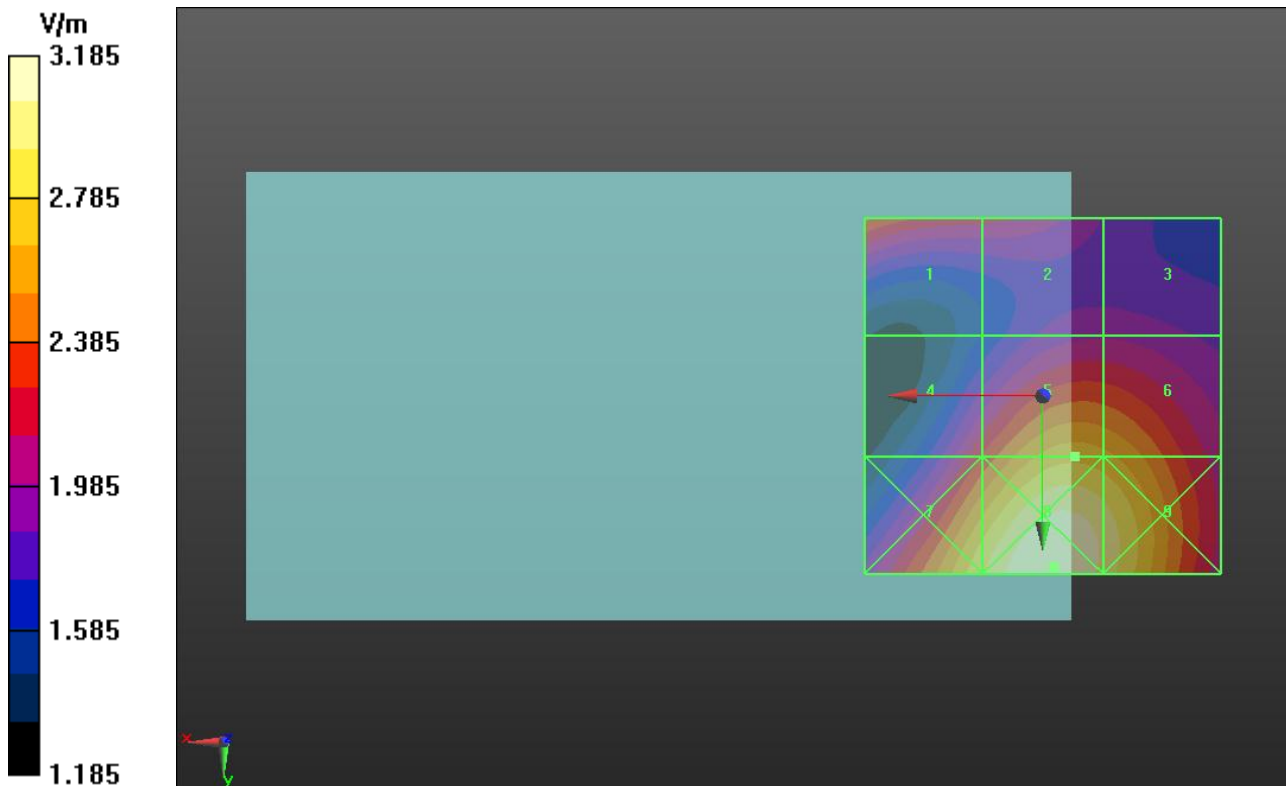
|                                       |  |                                       |
|---------------------------------------|--|---------------------------------------|
| Grid 1 <b>M4</b><br><b>7.7 dBV/m</b>  | Grid 2 <b>M4</b><br><b>6.75 dBV/m</b>  | Grid 3 <b>M4</b><br><b>5.9 dBV/m</b>  |
| Grid 4 <b>M4</b><br><b>7.13 dBV/m</b> | Grid 5 <b>M4</b><br><b>8.77 dBV/m</b>  | Grid 6 <b>M4</b><br><b>8.62 dBV/m</b> |
| Grid 7 <b>M4</b><br><b>9.29 dBV/m</b> | Grid 8 <b>M4</b><br><b>10.06 dBV/m</b> | Grid 9 <b>M4</b><br><b>9.62 dBV/m</b> |

**Cursor:**

Total = 10.06 dBV/m

E Category: M4

Location: -1.5, 24, 8.7 mm





## HAC-RF Emission

Communication System: UMTS-FDD (WCDMA); Frequency: 1907.6 MHz; Duty Cycle: 1:2.18776

Phantom section: RF Section

DASY5 Configuration:

- Probe: ER3DV6 - SN2509; ConvF(1, 1, 1); Calibrated: 6/20/2012;
- Sensor-Surface: (Fix Surface)
- Electronics: DAE4 Sn1239; Calibrated: 6/6/2012
- Phantom: HAC Test Arch with AMCC; Type: SD HAC P01 BB
- Measurement SW: DASY52, Version 52.8 (5); SEMCAD X Version 14.6.8 (7028)

### W-CDMA Band II/RMC Rel 99 ch 9538/Hearing Aid Compatibility Test (101x101x1):

Interpolated grid: dx=0.5000 mm, dy=0.5000 mm

Device Reference Point: 0, 0, -6.3 mm

Reference Value = 30.21 V/m; Power Drift = -0.01 dB

Applied MIF = -20.49 dB

RF audio interference level = 8.63 dBV/m

**Emission category: M4**

MIF scaled E-field

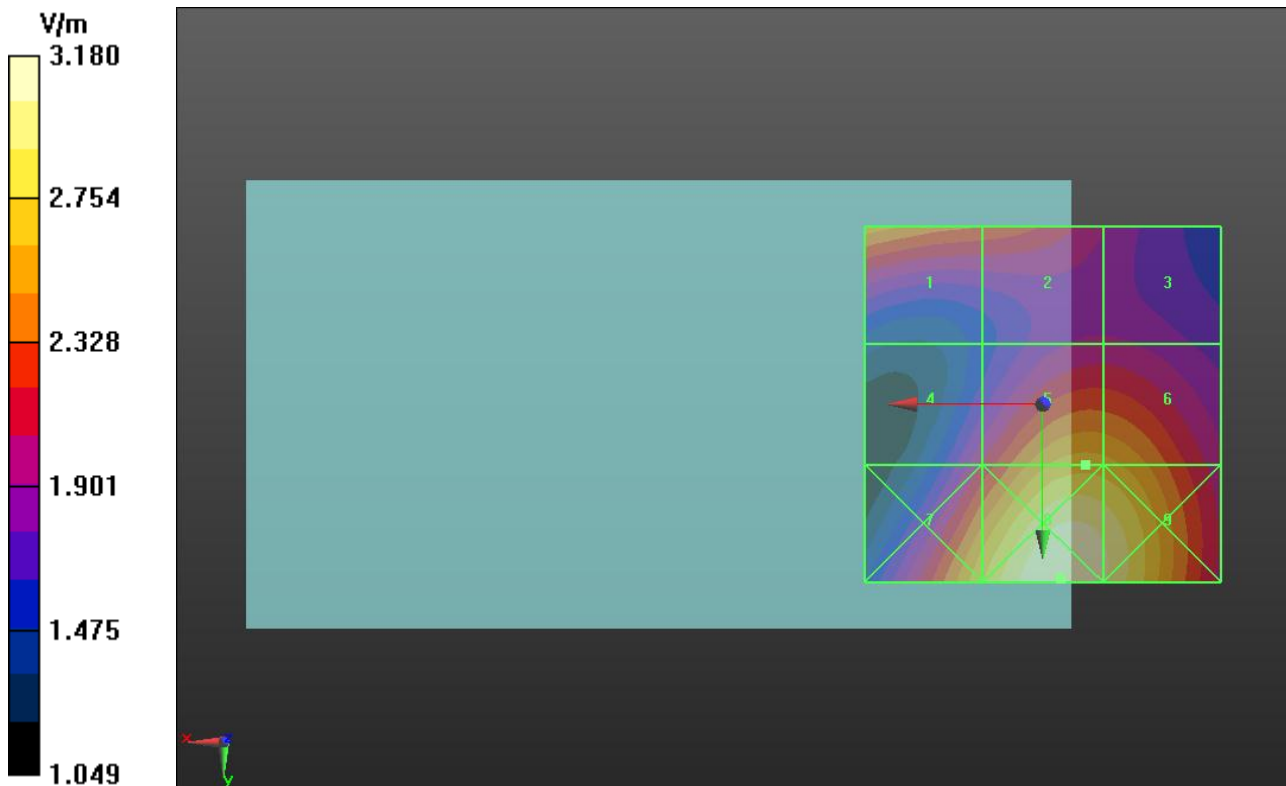
|                                       |  |                                       |
|---------------------------------------|--|---------------------------------------|
| Grid 1 <b>M4</b><br><b>8.18 dBV/m</b> | Grid 2 <b>M4</b><br><b>7.34 dBV/m</b>  | Grid 3 <b>M4</b><br><b>5.75 dBV/m</b> |
| Grid 4 <b>M4</b><br><b>6.33 dBV/m</b> | Grid 5 <b>M4</b><br><b>8.63 dBV/m</b>  | Grid 6 <b>M4</b><br><b>8.55 dBV/m</b> |
| Grid 7 <b>M4</b><br><b>8.8 dBV/m</b>  | Grid 8 <b>M4</b><br><b>10.05 dBV/m</b> | Grid 9 <b>M4</b><br><b>9.73 dBV/m</b> |

**Cursor:**

Total = 10.05 dBV/m

E Category: M4

Location: -2.5, 24.5, 8.7 mm



## HAC-RF Emission

Communication System: UMTS-FDD (WCDMA); Frequency: 1712.4 MHz; Duty Cycle: 1:2.18776

Phantom section: RF Section

DASY5 Configuration:

- Probe: ER3DV6 - SN2509; ConvF(1, 1, 1); Calibrated: 6/20/2012;
- Sensor-Surface: (Fix Surface)
- Electronics: DAE4 Sn1239; Calibrated: 6/6/2012
- Phantom: HAC Test Arch with AMCC; Type: SD HAC P01 BB
- Measurement SW: DASY52, Version 52.8 (5); SEMCAD X Version 14.6.8 (7028)

## W-CDMA Band IV/RMC Rel 99 ch 1312/Hearing Aid Compatibility Test (101x101x1):

Interpolated grid: dx=0.5000 mm, dy=0.5000 mm

Device Reference Point: 0, 0, -6.3 mm

Reference Value = 35.84 V/m; Power Drift = -0.06 dB

Applied MIF = -20.49 dB

RF audio interference level = 10.51 dBV/m

**Emission category: M4**

MIF scaled E-field

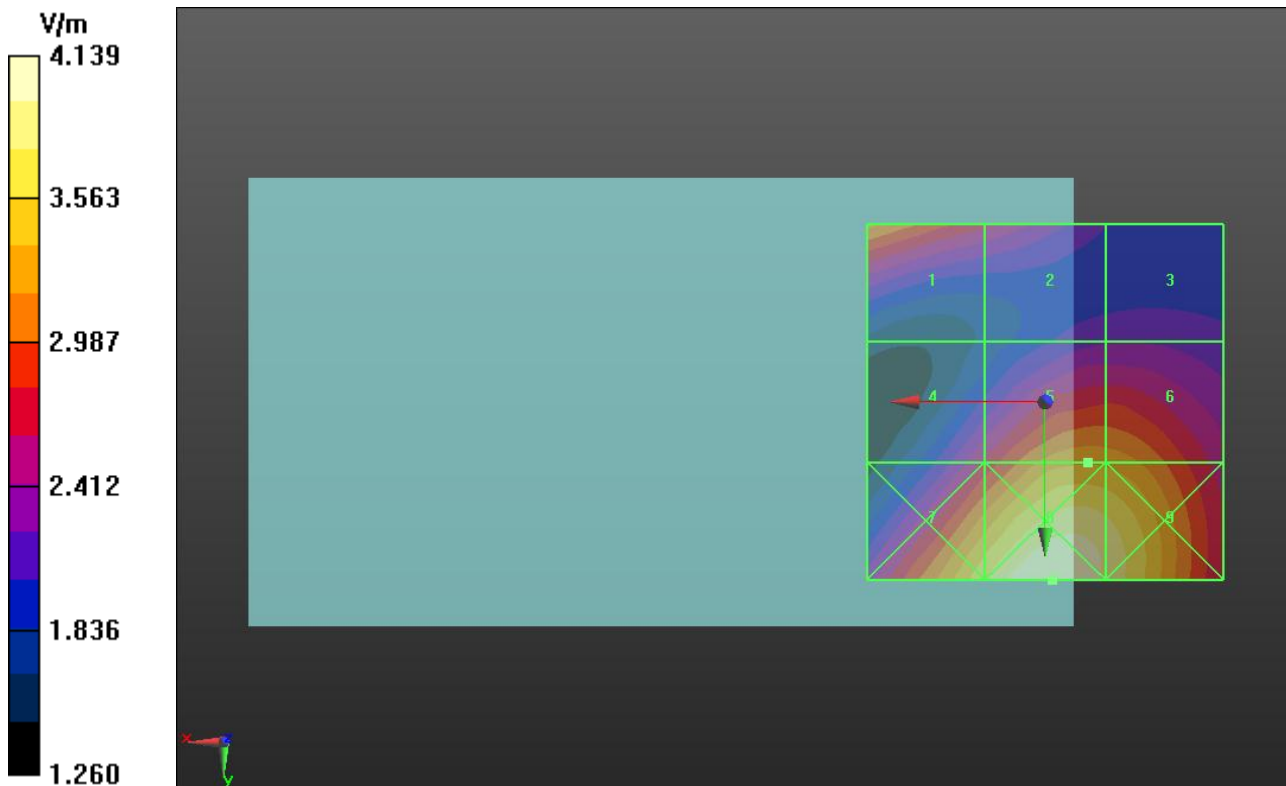
|  |  |  |
|--|--|--|
| Grid 1 <b>M4</b><br><b>10.23 dBV/m</b> | Grid 2 <b>M4</b><br><b>8.49 dBV/m</b>  | Grid 3 <b>M4</b><br><b>6.93 dBV/m</b>  |
| Grid 4 <b>M4</b><br><b>8.48 dBV/m</b>  | Grid 5 <b>M4</b><br><b>10.51 dBV/m</b> | Grid 6 <b>M4</b><br><b>10.45 dBV/m</b> |
| Grid 7 <b>M4</b><br><b>11.44 dBV/m</b> | Grid 8 <b>M4</b><br><b>12.34 dBV/m</b> | Grid 9 <b>M4</b><br><b>11.86 dBV/m</b> |

**Cursor:**

Total = 12.34 dBV/m

E Category: M4

Location: -1, 25, 8.7 mm



## HAC-RF Emission

Communication System: UMTS-FDD (WCDMA); Frequency: 1732.6 MHz; Duty Cycle: 1:2.18776

Phantom section: RF Section

DASY5 Configuration:

- Probe: ER3DV6 - SN2509; ConvF(1, 1, 1); Calibrated: 6/20/2012;
- Sensor-Surface: (Fix Surface)
- Electronics: DAE4 Sn1239; Calibrated: 6/6/2012
- Phantom: HAC Test Arch with AMCC; Type: SD HAC P01 BB
- Measurement SW: DASY52, Version 52.8 (5); SEMCAD X Version 14.6.8 (7028)

### W-CDMA Band IV/RMC Rel 99 ch 1413/Hearing Aid Compatibility Test (101x101x1):

Interpolated grid: dx=0.5000 mm, dy=0.5000 mm

Device Reference Point: 0, 0, -6.3 mm

Reference Value = 29.01 V/m; Power Drift = -0.16 dB

Applied MIF = -20.49 dB

RF audio interference level = 8.85 dBV/m

**Emission category: M4**

MIF scaled E-field

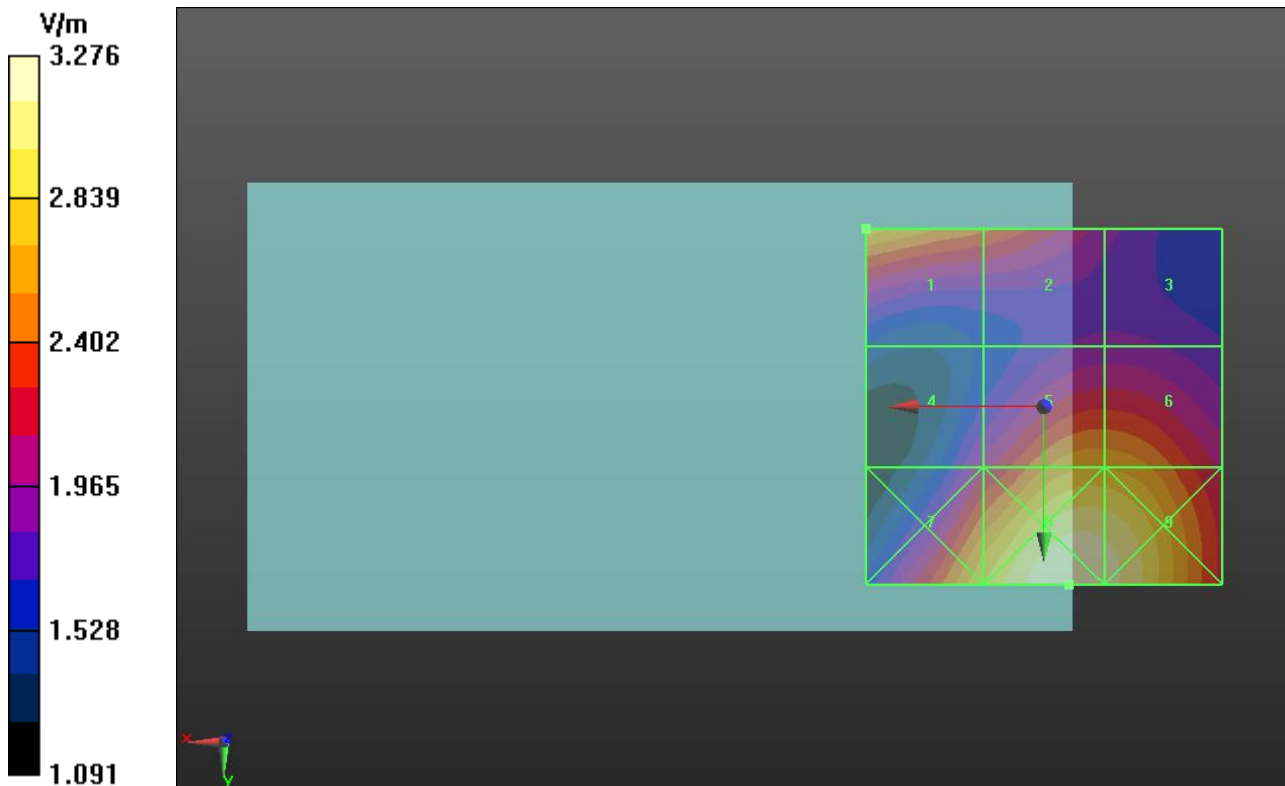
|                                       |  |  |
|---------------------------------------|--|--|
| Grid 1 <b>M4</b><br><b>8.85 dBV/m</b> | Grid 2 <b>M4</b><br><b>7.74 dBV/m</b>  | Grid 3 <b>M4</b><br><b>5.57 dBV/m</b>  |
| Grid 4 <b>M4</b><br><b>6.29 dBV/m</b> | Grid 5 <b>M4</b><br><b>8.63 dBV/m</b>  | Grid 6 <b>M4</b><br><b>8.61 dBV/m</b>  |
| Grid 7 <b>M4</b><br><b>9.09 dBV/m</b> | Grid 8 <b>M4</b><br><b>10.31 dBV/m</b> | Grid 9 <b>M4</b><br><b>10.11 dBV/m</b> |

**Cursor:**

Total = 10.31 dBV/m

E Category: M4

Location: -3.5, 25, 8.7 mm



## HAC-RF Emission

Communication System: UMTS-FDD (WCDMA); Frequency: 1752.6 MHz; Duty Cycle: 1:2.18776

Phantom section: RF Section

DASY5 Configuration:

- Probe: ER3DV6 - SN2509; ConvF(1, 1, 1); Calibrated: 6/20/2012;
- Sensor-Surface: (Fix Surface)
- Electronics: DAE4 Sn1239; Calibrated: 6/6/2012
- Phantom: HAC Test Arch with AMCC; Type: SD HAC P01 BB
- Measurement SW: DASY52, Version 52.8 (5); SEMCAD X Version 14.6.8 (7028)

## W-CDMA Band IV/RMC Rel 99 ch 1513/Hearing Aid Compatibility Test (101x101x1):

Interpolated grid: dx=0.5000 mm, dy=0.5000 mm

Device Reference Point: 0, 0, -6.3 mm

Reference Value = 33.66 V/m; Power Drift = 0.11 dB

Applied MIF = -20.49 dB

RF audio interference level = 9.85 dBV/m

**Emission category: M4**

MIF scaled E-field

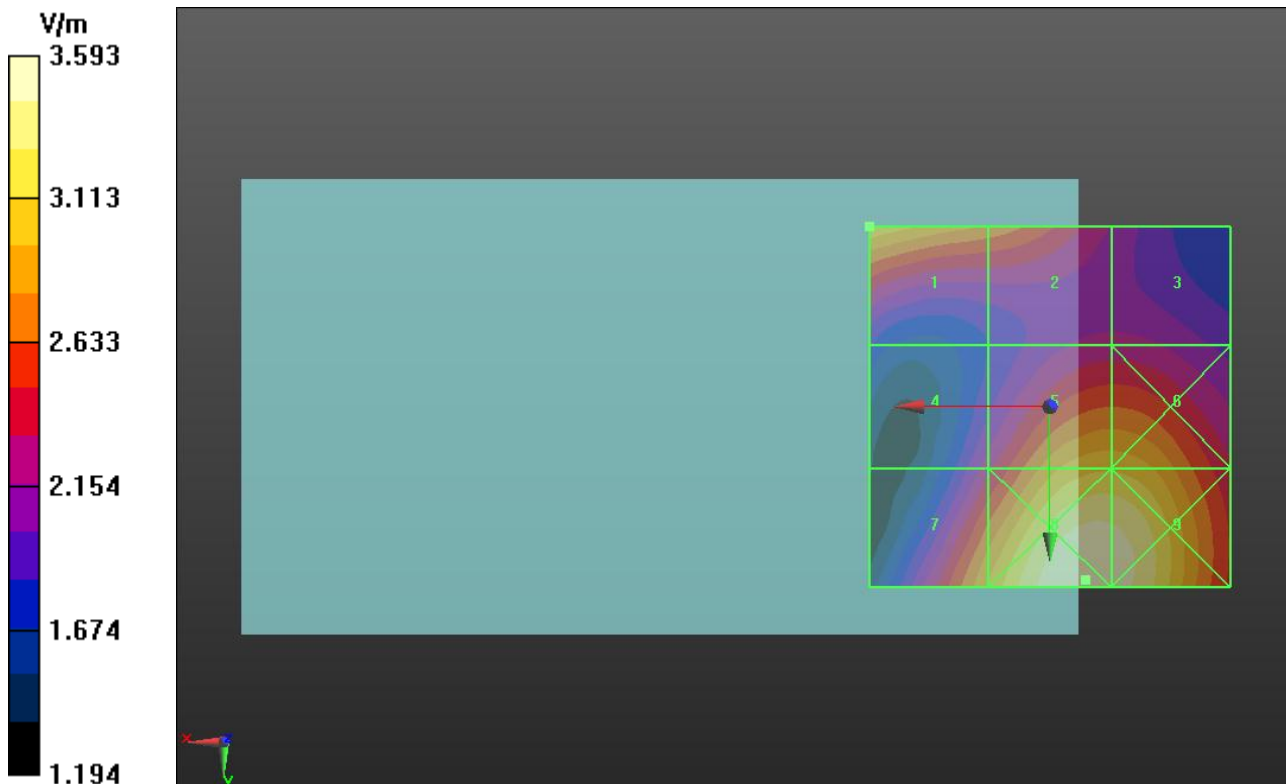
|                                       |  |                                       |
|---------------------------------------|--|---------------------------------------|
| Grid 1 <b>M4</b><br><b>9.85 dBV/m</b> | Grid 2 <b>M4</b><br><b>8.85 dBV/m</b>  | Grid 3 <b>M4</b><br><b>6.94 dBV/m</b> |
| Grid 4 <b>M4</b><br><b>7.13 dBV/m</b> | Grid 5 <b>M4</b><br><b>9.8 dBV/m</b>   | Grid 6 <b>M4</b><br><b>9.8 dBV/m</b>  |
| Grid 7 <b>M4</b><br><b>9.5 dBV/m</b>  | Grid 8 <b>M4</b><br><b>11.11 dBV/m</b> | Grid 9 <b>M4</b><br><b>11 dBV/m</b>   |

**Cursor:**

Total = 11.11 dBV/m

E Category: M4

Location: -5, 24, 8.7 mm



## HAC-RF Emission

Communication System: UMTS-FDD (WCDMA); Frequency: 826.4 MHz; Duty Cycle: 1:2.18776

Phantom section: RF Section

DASY5 Configuration:

- Probe: ER3DV6 - SN2509; ConvF(1, 1, 1); Calibrated: 6/20/2012;
- Sensor-Surface: (Fix Surface)
- Electronics: DAE4 Sn1239; Calibrated: 6/6/2012
- Phantom: HAC Test Arch with AMCC; Type: SD HAC P01 BB
- Measurement SW: DASY52, Version 52.8 (5); SEMCAD X Version 14.6.8 (7028)

## W-CDMA Band V/RMC Rel 99 ch 4132/Hearing Aid Compatibility Test (101x101x1):

Interpolated grid: dx=0.5000 mm, dy=0.5000 mm

Device Reference Point: 0, 0, -6.3 mm

Reference Value = 79.77 V/m; Power Drift = 0.02 dB

Applied MIF = -20.49 dB

RF audio interference level = 15.12 dBV/m

**Emission category: M4**

MIF scaled E-field

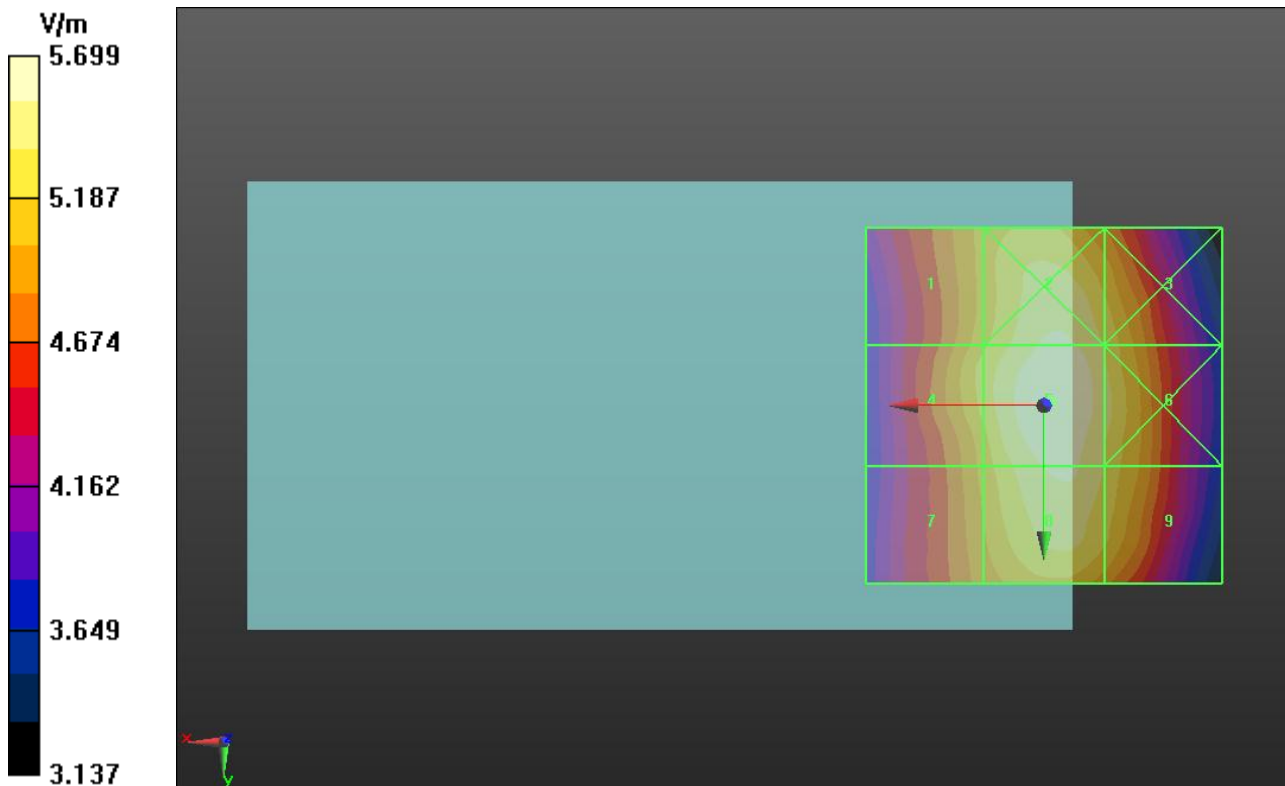
|  |  |  |
|--|--|--|
| Grid 1 <b>M4</b><br><b>14.25 dBV/m</b> | Grid 2 <b>M4</b><br><b>14.91 dBV/m</b> | Grid 3 <b>M4</b><br><b>14.56 dBV/m</b> |
| Grid 4 <b>M4</b><br><b>14.44 dBV/m</b> | Grid 5 <b>M4</b><br><b>15.12 dBV/m</b> | Grid 6 <b>M4</b><br><b>14.71 dBV/m</b> |
| Grid 7 <b>M4</b><br><b>14.13 dBV/m</b> | Grid 8 <b>M4</b><br><b>14.9 dBV/m</b>  | Grid 9 <b>M4</b><br><b>14.56 dBV/m</b> |

**Cursor:**

Total = 15.12 dBV/m

E Category: M4

Location: -1, -0.5, 8.7 mm



## HAC-RF Emission

Communication System: UMTS-FDD (WCDMA); Frequency: 836.6 MHz; Duty Cycle: 1:2.18776

Phantom section: RF Section

DASY5 Configuration:

- Probe: ER3DV6 - SN2509; ConvF(1, 1, 1); Calibrated: 6/20/2012;
- Sensor-Surface: (Fix Surface)
- Electronics: DAE4 Sn1239; Calibrated: 6/6/2012
- Phantom: HAC Test Arch with AMCC; Type: SD HAC P01 BB
- Measurement SW: DASY52, Version 52.8 (5); SEMCAD X Version 14.6.8 (7028)

## W-CDMA Band V/RMC Rel 99 ch 4183/Hearing Aid Compatibility Test (101x101x1):

Interpolated grid: dx=0.5000 mm, dy=0.5000 mm

Device Reference Point: 0, 0, -6.3 mm

Reference Value = 85.53 V/m; Power Drift = -0.02 dB

Applied MIF = -20.49 dB

RF audio interference level = 15.70 dBV/m

**Emission category: M4**

MIF scaled E-field

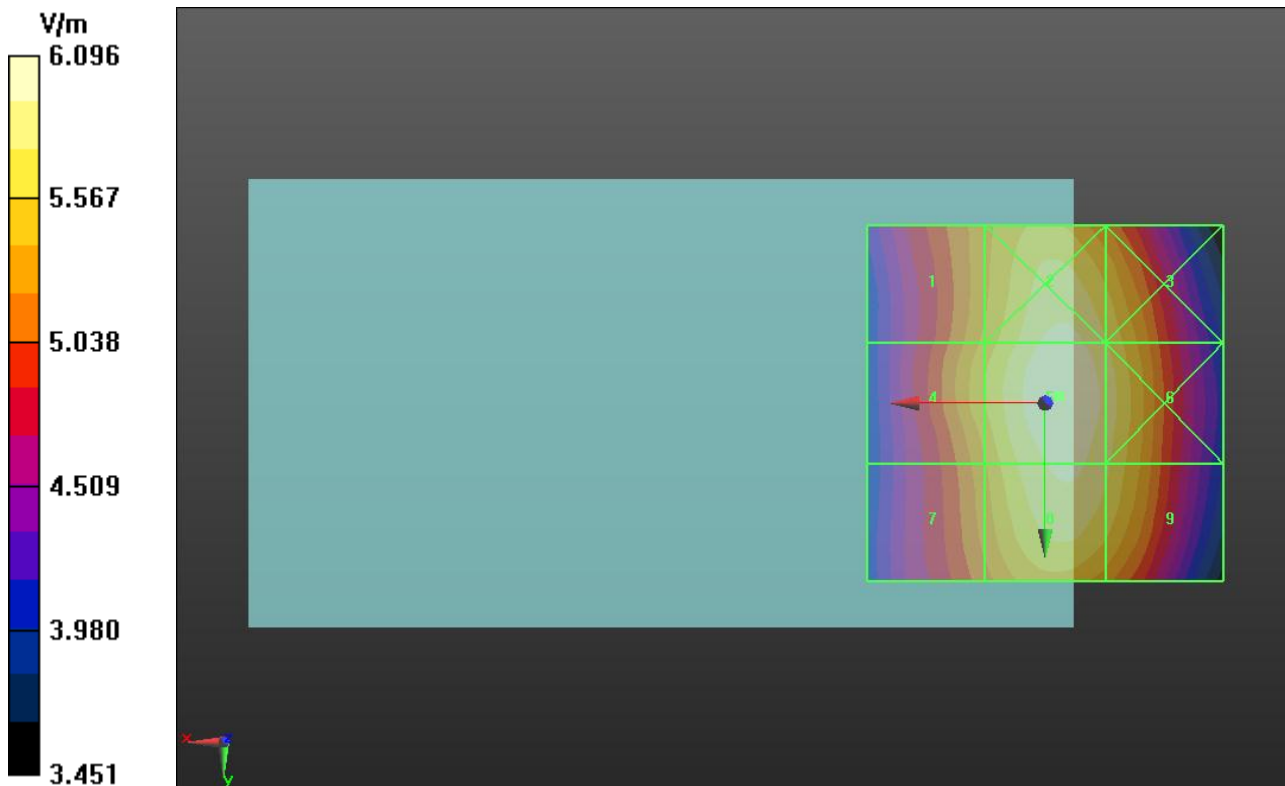
|  |  |  |
|--|--|--|
| Grid 1 <b>M4</b><br><b>14.73 dBV/m</b> | Grid 2 <b>M4</b><br><b>15.54 dBV/m</b> | Grid 3 <b>M4</b><br><b>15.21 dBV/m</b> |
| Grid 4 <b>M4</b><br><b>14.93 dBV/m</b> | Grid 5 <b>M4</b><br><b>15.7 dBV/m</b>  | Grid 6 <b>M4</b><br><b>15.37 dBV/m</b> |
| Grid 7 <b>M4</b><br><b>14.62 dBV/m</b> | Grid 8 <b>M4</b><br><b>15.51 dBV/m</b> | Grid 9 <b>M4</b><br><b>15.25 dBV/m</b> |

**Cursor:**

Total = 15.70 dBV/m

E Category: M4

Location: -2, -1, 8.7 mm



## HAC-RF Emission

Communication System: UMTS-FDD (WCDMA); Frequency: 846.6 MHz; Duty Cycle: 1:2.18776

Phantom section: RF Section

DASY5 Configuration:

- Probe: ER3DV6 - SN2509; ConvF(1, 1, 1); Calibrated: 6/20/2012;
- Sensor-Surface: (Fix Surface)
- Electronics: DAE4 Sn1239; Calibrated: 6/6/2012
- Phantom: HAC Test Arch with AMCC; Type: SD HAC P01 BB
- Measurement SW: DASY52, Version 52.8 (5); SEMCAD X Version 14.6.8 (7028)

## W-CDMA Band V/RMC Rel 99 ch 4233/Hearing Aid Compatibility Test (101x101x1):

Interpolated grid: dx=0.5000 mm, dy=0.5000 mm

Device Reference Point: 0, 0, -6.3 mm

Reference Value = 83.07 V/m; Power Drift = 0.16 dB

Applied MIF = -20.49 dB

RF audio interference level = 15.54 dBV/m

Emission category: **M4**

MIF scaled E-field

|  |  |  |
|--|--|--|
| Grid 1 <b>M4</b><br><b>14.63 dBV/m</b> | Grid 2 <b>M4</b><br><b>15.36 dBV/m</b> | Grid 3 <b>M4</b><br><b>15.08 dBV/m</b> |
| Grid 4 <b>M4</b><br><b>14.83 dBV/m</b> | Grid 5 <b>M4</b><br><b>15.54 dBV/m</b> | Grid 6 <b>M4</b><br><b>15.26 dBV/m</b> |
| Grid 7 <b>M4</b><br><b>14.52 dBV/m</b> | Grid 8 <b>M4</b><br><b>15.39 dBV/m</b> | Grid 9 <b>M4</b><br><b>15.15 dBV/m</b> |

### Cursor:

Total = 15.54 dBV/m

E Category: M4

Location: -3, -0.5, 8.7 mm

