



18. TEST PHOTOGRAPHS

See following Attached Pages for setup photographs.

FCC ID: ZNFMS395	 PCTEST ENGINEERING LABORATORY, INC.	HAC (RF EMISSIONS) TEST REPORT	 LG	Reviewed by: Quality Manager
Filename: 0Y1407141391.ZNF	Test Dates: July 9-14, 2014	EUT Type: Portable Handset	Page 63 of 65	

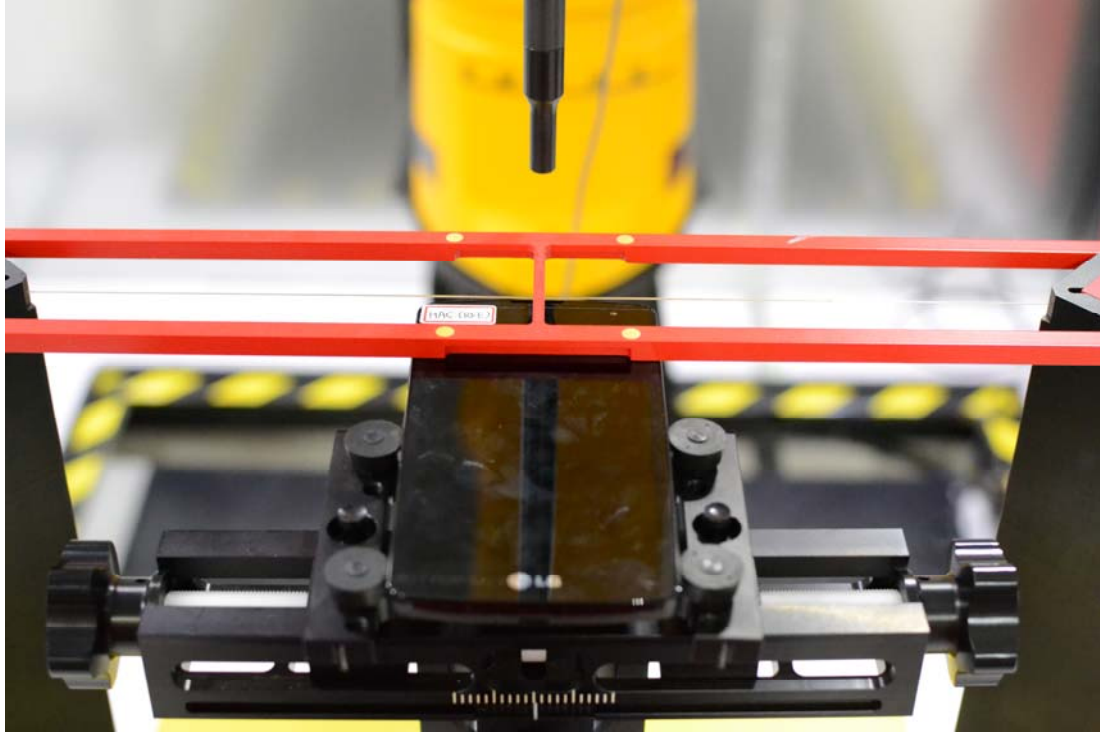


Figure 18-1
Ear Reference Point HAC Phantom Alignment

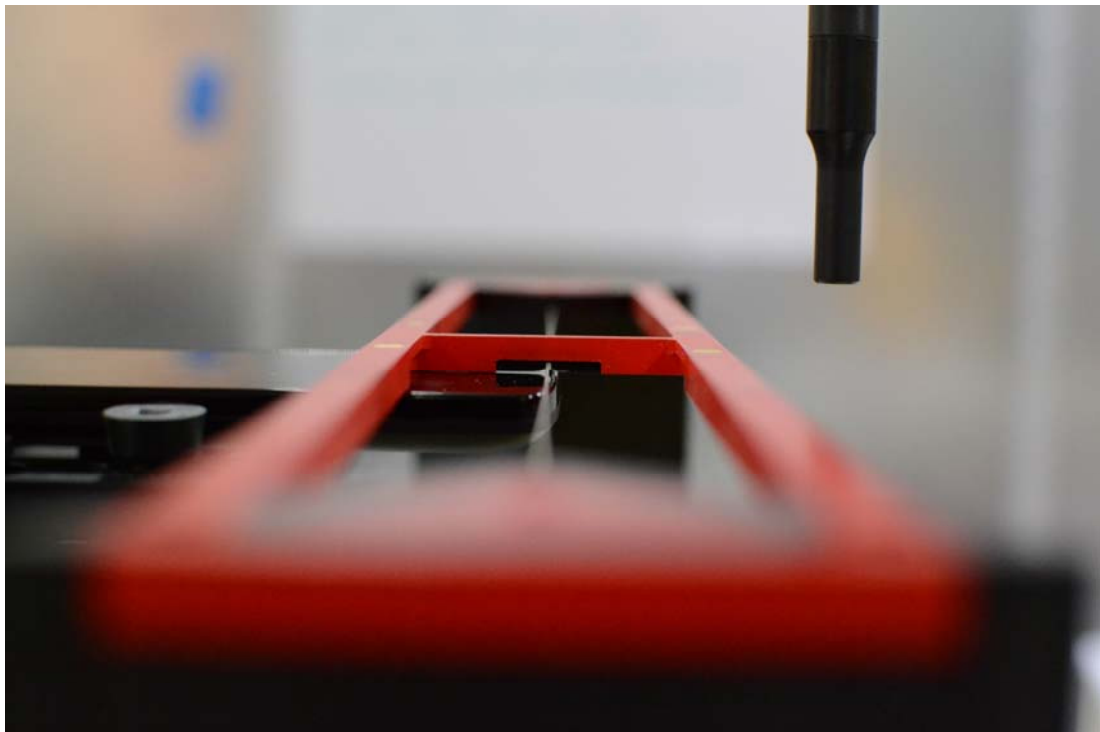




Figure 18-2
HAC Phantom Plane Alignment

FCC ID: ZNFMS395		HAC (RF EMISSIONS) TEST REPORT	 Reviewed by: Quality Manager
Filename: 0Y1407141391.ZNF	Test Dates: July 9-14, 2014	EUT Type: Portable Handset	Page 64 of 65

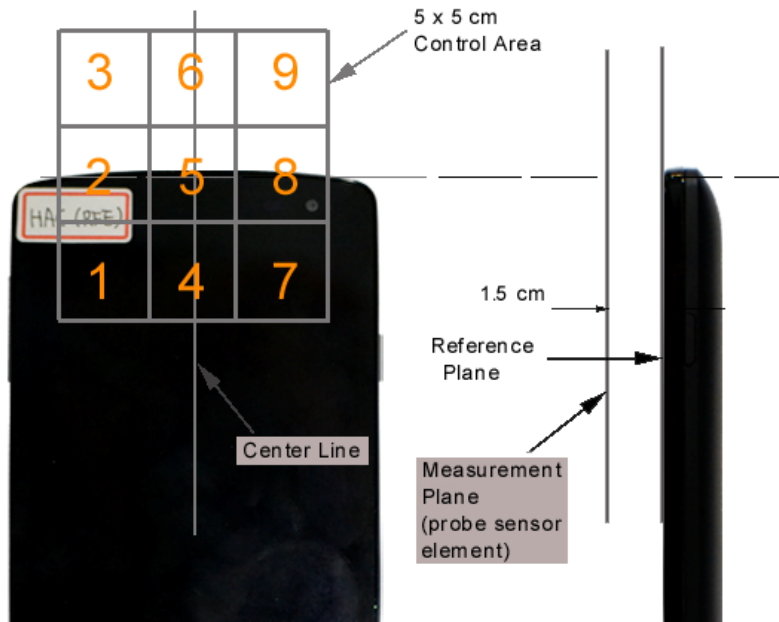


Figure 18-3 5x5 Scan grid above WD



Figure 18-4 E-Field WD Scan overlay

FCC ID: ZNFMS395	PCTEST ENGINEERING LABORATORY, INC.	HAC (RF EMISSIONS) TEST REPORT	LG	Reviewed by: Quality Manager
Filename: 0Y1407141391.ZNF	Test Dates: July 9-14, 2014	EUT Type: Portable Handset		Page 65 of 65