

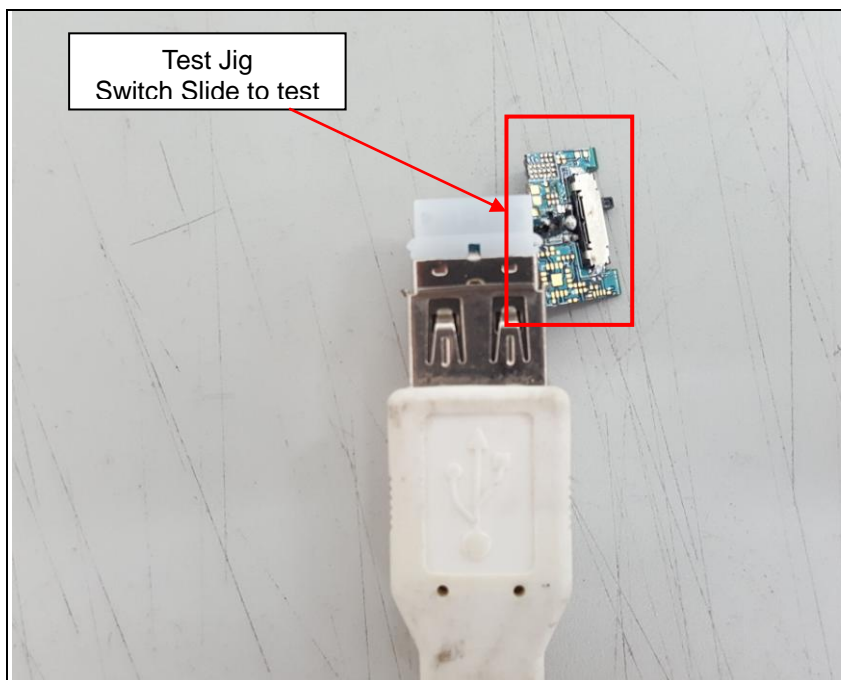
SGS

# ***Test setup photos of EUT***

## - Photo of EUT



Supply DC 5 V



Test Jig  
Switch Slide to test

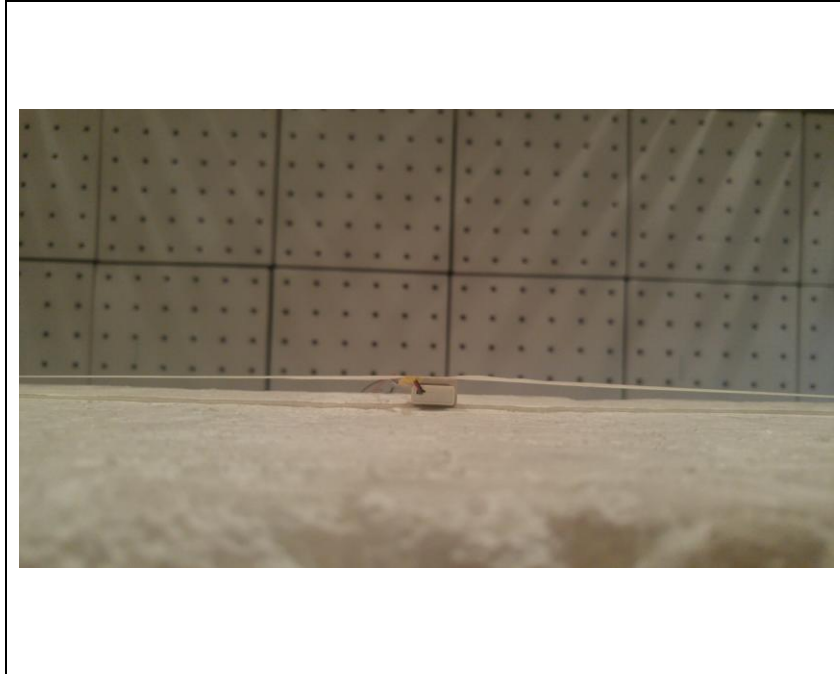
## Test Method

- Every time when the switch moves from the center to the left, the mode rotates 9 kinds of operation.
- : Unmodulated Transmission Channel 2 -> 39 -> 80 -> Modulated Transmission Channel 2 -> 39 -> 80 -> Receive Mode Channel 2 -> 39 -> 80

## 1. Orthogonal planes of EUT

- The testing was set in the two orthogonal planes and measured for each position (X, Y, Z).

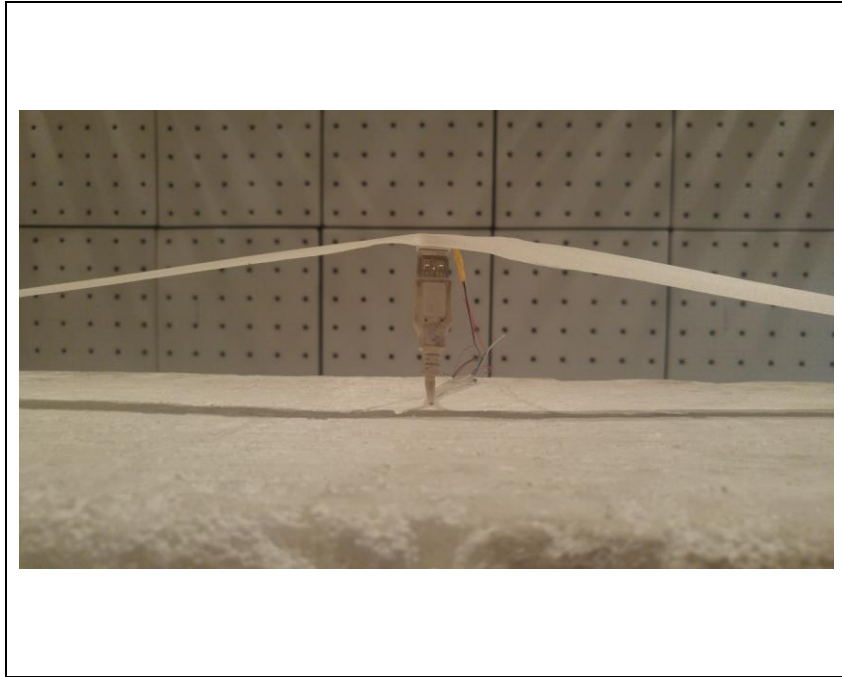
### A. X-axis



### B. Y-axis



## C. Z-axis



## 2. Worst case of orthogonal planes each frequency band

- Test setup photos for each mode were reported as representative worst axis after radiated measurements for each position were complete.
- To get a maximum emission level from the EUT, the EUT is manipulated through three orthogonal planes (X, Y). Worst orthogonal plan of EUT is **X – axis** during radiation test.

### - Photo of Radiated Spurious Emission Test (Below 1 GHz)



- Photo of Radiated Spurious Emission Test (Above 1 GHz)



- Photo of AC Power line emission Test



