

# USER MANUAL

## LG Wireless Mouse

Rev 1.0 US  
All rights reserved.  
© 2016 LG Electronics Inc.

Please read the Safety Precautions carefully before using this product.  
After reading this manual, please keep it in an easily accessible location for future reference.  
Spelling mistakes or errors in this manual may be changed by LG Electronics without prior notification.

MEB-300

www.lg.com

### Product Specifications

Item	Details
Model	MEB-300
Connection Method	Bluetooth, Non-standard RF
Bluetooth Specification	V 4.1
Operating Frequency	2.402 to 2.480 GHz
Communication Distance	Up to about 10 m
OS Compatibility	Bluetooth LE devices running Android™ 4.0 or later Mac OS X 10.7 or later Windows® 7 or later
Dimensions	Open: 68 mm (W) X 106.4 mm (L) X 31.8 mm (H) Close: 68 mm (W) X 82.7 mm (L) X 31.6 mm (H)
Operating Temperature	0 °C ~ 40 °C
Battery	2 X AAA Battery

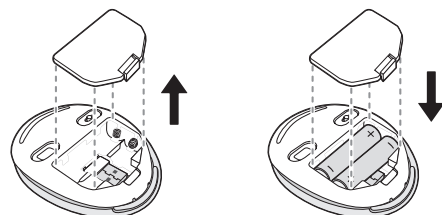
Bluetooth® is a registered trademark of Bluetooth SIG, Inc. worldwide.



FCC ID: ZNFMEB300  
ZNFMEBR300

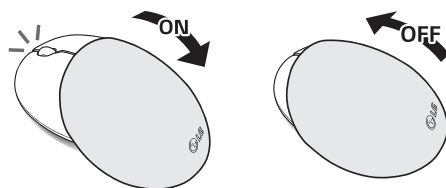
The FCC ID can be found on the bottom of the product's cover after sliding the cover open.

### Inserting Batteries



- \* A set of batteries is included with the product.
- \* Insert the batteries with the polarity oriented correctly.

### Turning the Power On/Off



### Power Saving Mode

The mouse will automatically enter power saving mode if it is idle for a certain amount of time or its USB receiver is removed from the PC while being used in USB wireless mode. You can exit power saving mode by pressing the left or right mouse button.



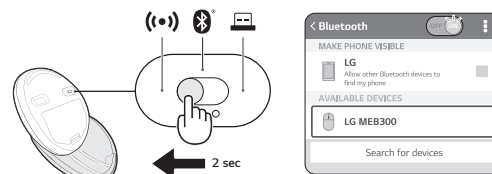
### Battery Status Indicator

If the status indicator above the scroll wheel continues to blink, replace the batteries.



### Using in Bluetooth® Mode

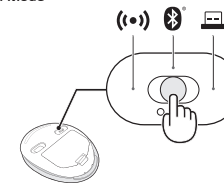
#### Pairing with a Mobile Device in Bluetooth Mode



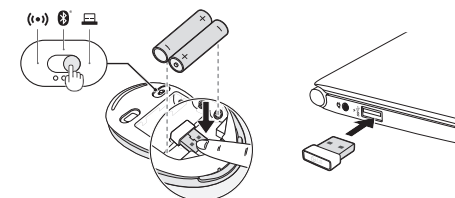
\* The mouse will enter the Pairing Mode and the blue status indicator above the scroll wheel will turn on.

\* If the mouse is not connected to a mobile device after entering the Pairing Mode for a certain period of time, it will enter power saving mode.

### Using in Bluetooth Mode



### Using in USB Wireless Mode



\* The USB receiver can be stored inside the bottom panel of the mouse below the batteries.

### Safety Precautions

#### ⚠ WARNING

- **Make sure to consult the manufacturer or retailer if your batteries are visibly swollen or corroded as they may be dangerous.**
- **Do not place near fire. (Do not place inside a microwave oven.)**
- **Make sure to not let any metallic objects such as necklaces, coins, keys or watches touch the battery ends.**
- **Do not point the light of the LED on the bottom of the optical mouse at your eyes for the protection of your eyesight.**  
Doing so may cause deterioration or loss of eyesight.

#### ⚠ CAUTION

- **Compatibility issues may arise with certain products when connecting to other products.**  
LG Electronics does not guarantee compatibility with all peripheral devices.
- **Use at temperatures between 0 °C and 40 °C.**  
Using or storing the product at temperatures too high or too low may result in product damage, malfunction or an explosion.
- **Install in a stable location where the product will not fall.**  
In the event the product falls, the product may be damaged or cause physical injury.
- **Be careful not to spill any water, coffee, juice or other liquids on the mouse as the product may be damaged or malfunction.**
- **Keep the product away from heating appliances (e.g. heaters).**  
Otherwise, this may result in product deformation or fire.
- **Turn the product's power off when not in use for a long period of time to prevent unnecessary battery consumption.**
- **Do not disassemble or modify the product.**  
The warranty will be voided even within the warranty period.
- **Users that have received medical device transplants must consult a doctor before use.**
- **Make sure the product is not exposed to direct sunlight in locations such as inside a confined car.**  
The increase in temperature may result in product deformation or fire.
- **Do not use this product for any application other than as a mouse.**
- **Keep out of reach of children.**
- **The Nano receiver provided with the mouse will only function with the wireless mouse it was included with.**  
It will not function with models from other manufacturers or same models of different serial numbers.

### Additional Information

#### Radio Frequency Exposure

The USB/Bluetooth mouse MEB-300 is a radio transmitter and receiver. The device will transmit and receive radio frequency (RF) electromagnetic fields (microwaves) within the frequency range from 2.402 GHz to 2.480 GHz while functioning to communicate with Bluetooth-equipped mobile devices. The USB/Bluetooth mouse is designed to function in accordance with RF exposure guidelines and limits established by state agencies and international health organizations when used with compatible LG Electronics mobile phones.

**WARNING:** This product contains chemicals known to the State of California to cause cancer and birth defects or other reproductive harm. Call (800) 243-0000 for more information.  
**Wash hands after handling.**

#### Part 15.19 statement

This device complies with Part 15 of the FCC Rules. Operation is subject to the following two conditions: (1) this device may not cause harmful interference, and (2) this device must accept any interference received, including interference that may cause undesired operation.

#### Part 15.21 statement

Changes or modifications not expressly approved by the manufacturer (or party responsible) for compliance could void the user's authority to operate the equipment.

### Part 15.105 statement

This equipment has been tested and found to comply with the limits for a class B digital device, pursuant to Part 15 of the FCC Rules.

These limits are designed to provide reasonable protection against harmful interference in a residential installation. This equipment generates, uses, and can radiate radio frequency energy and, if not installed and used in accordance with the instructions, may cause harmful interference to radio communications. However, there is no guarantee that interference will not occur in a particular installation. If this equipment does cause harmful interference to radio or television reception, which can be determined by turning the equipment off and on, the user is encouraged to try to correct the interference by one or more of the following measures:

- Reorient or relocate the receiving antenna.
- Increase the separation between the equipment and receiver.
- Connect the equipment into an outlet on a circuit different from that to which the receiver is connected.
- Consult the dealer or an experienced radio/television technician for help.

### RF Exposure

This equipment complies with FCC radiation exposure limits set forth for an uncontrolled environment.

### IC NOTICE TO USERS:

This device complies with Industry Canada licence-exempt RSS standard(s).

Operation is subject to the following two conditions:

- (1) This device may not cause harmful interference, and
- (2) This device must accept any interference received, including interference that may cause undesired operation.

Le présent appareil est conforme aux CNR d'Industrie Canada applicables aux appareils radio exempts de licence. L'exploitation est autorisée aux deux conditions suivantes:

- (1) L'appareil ne doit pas produire de brouillage, et
- (2) L'utilisateur de l'appareil doit accepter tout brouillage radioélectrique subi, même si le brouillage est susceptible d'en compromettre le fonctionnement.