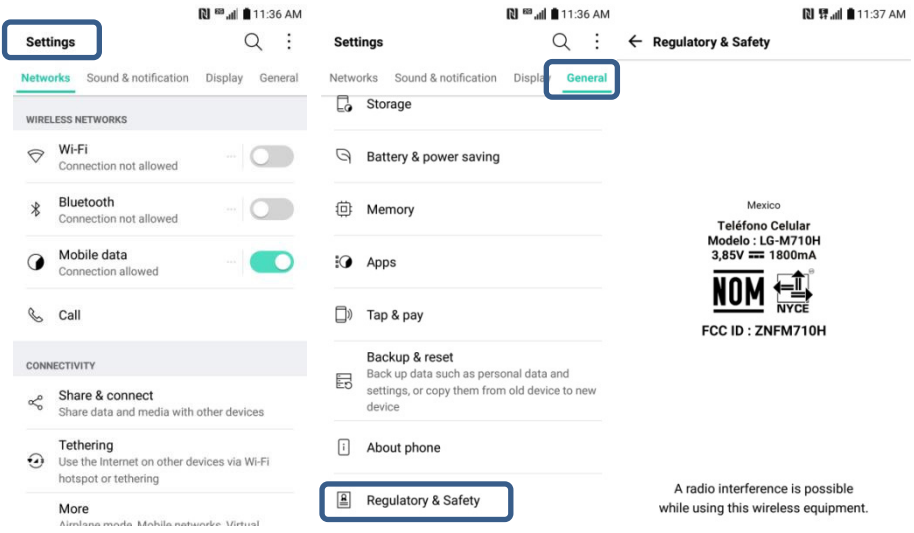


# Description of E-Label on the ZNFM710H

## ❖ FCC ID is applied by E-Label on the device



Setting Menu	
	Settings
Step 1	General
Step 2	Regulatory & Safety

## ❖ Instruction of E-Label on the user manual

**Regulatory information(Regulation ID number, E-labeling, etc.)**

For regulatory details, go to **Settings > General > Regulatory & Safety** on your phone.

## ❖ FCC ID is applied on packaging Label

Model No: LG-M710H  
 FCC ID : ZNFM710H  
 S/N : XXXX  
 Made in XXXX  
 IMEI : XXXXXXXXXXXXX

### Note!

We, LG Electronics MobileComm USA, state that at the time of purchase, the FCC ID is readily and physically visible to the purchaser on the packaging Label per 2.925(d). So, The FCC ID will be able to survive normal shipping and handling so it is visible for inspection at the time of import. We have programmed the e-label and it is not able to be modified by any third party. Also, SIM Card in is not required to access the FCC ID number.