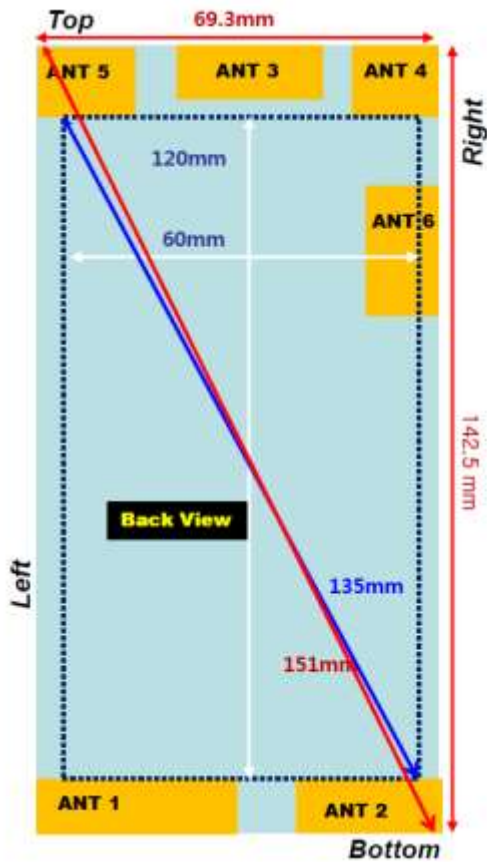
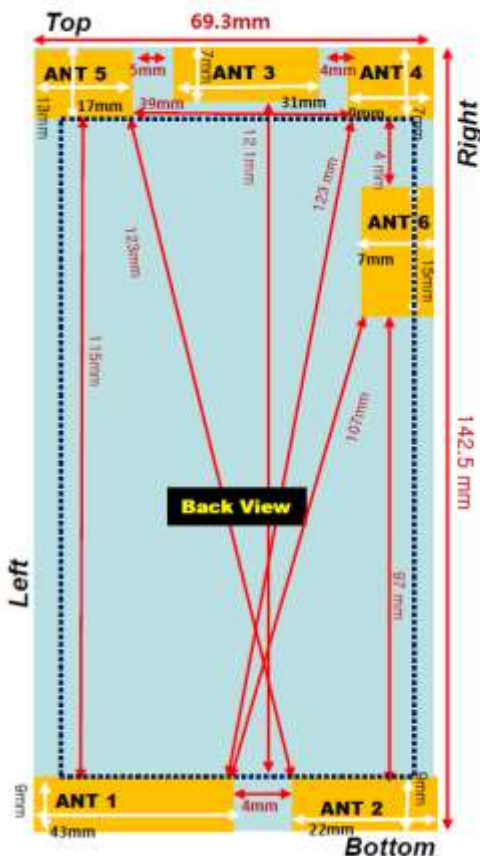


Antenna and Device Information



Antenna	Mode	Band
ANT1	Main LB	LTE B5 W5 GSM850/EGSM – TX,RX
ANT2	Main MB/HB	LTE B2/4/7 W2/4 PCS – TX,RX
ANT3	LB/HB MRD	LTE B5 LTE 7 W5 GSM850/EGSM– RX
ANT4	MB MRD	LTE B2/4 W2/4 PCS – RX
ANT5	GPS	GPS
ANT6	WIFI	2.4G



Antenna	Mode	Band
ANT1	Main LB	LTE B5 W5 GSM850/EGSM – TX,RX
ANT2	Main MB/HB	LTE B2/4/7 W2/4 PCS – TX,RX
ANT3	LB/HB MRD	LTE B5 LTE 7 W5 GSM850/EGSM– RX
ANT4	MB MRD	LTE B2/4 W2/4 PCS – RX
ANT5	GPS	GPS
ANT6	WIFI	2.4G

SAR Test Setup Photographs

■ Test Setup Photo (Left All)



■ Test Setup Photo (Left Touch/Tilt)



■ Test Setup Photo (Right All)



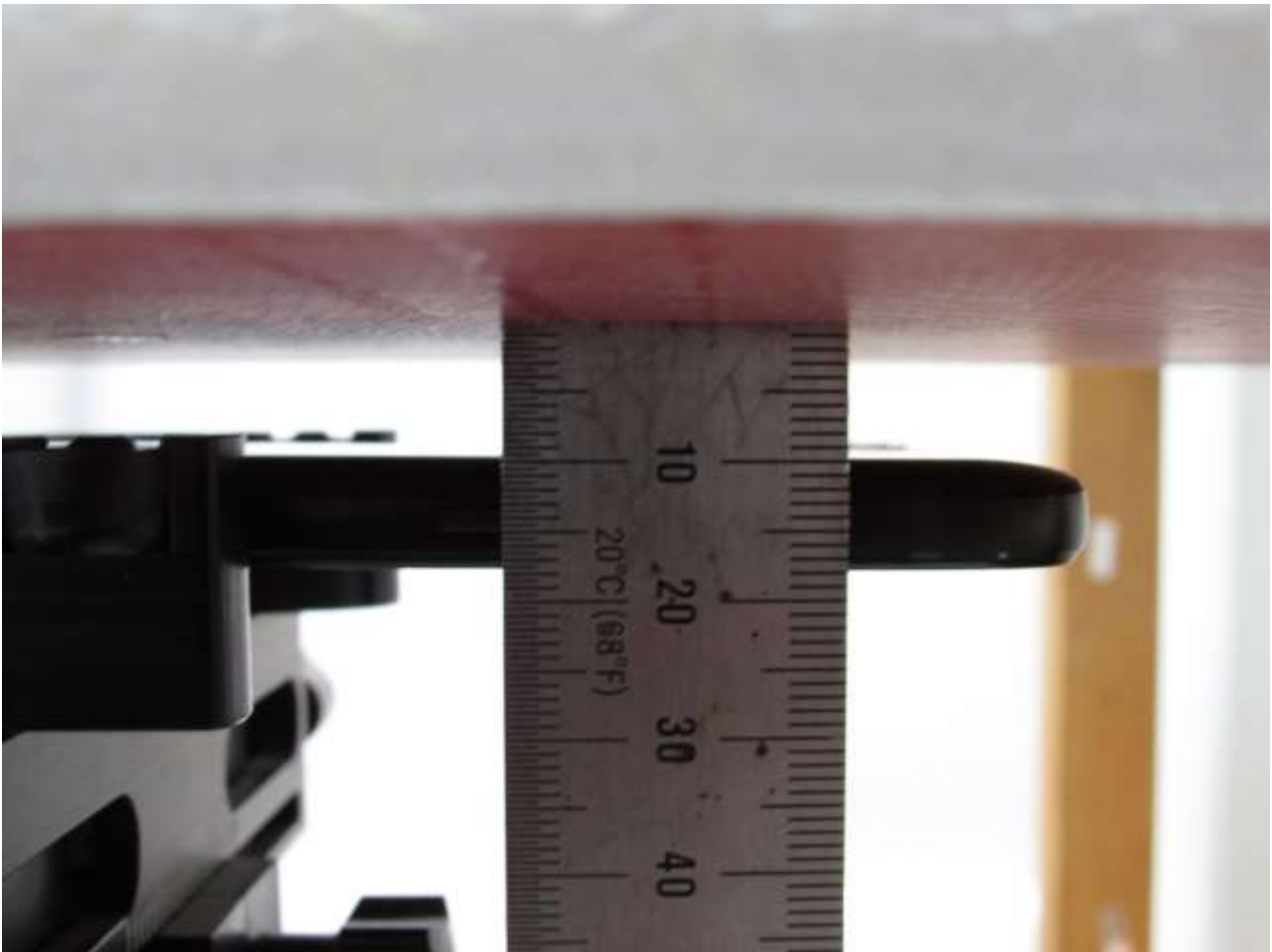
■ Test Setup Photo (Right Touch/Tilt)



■ Test Setup Photo (Body All)

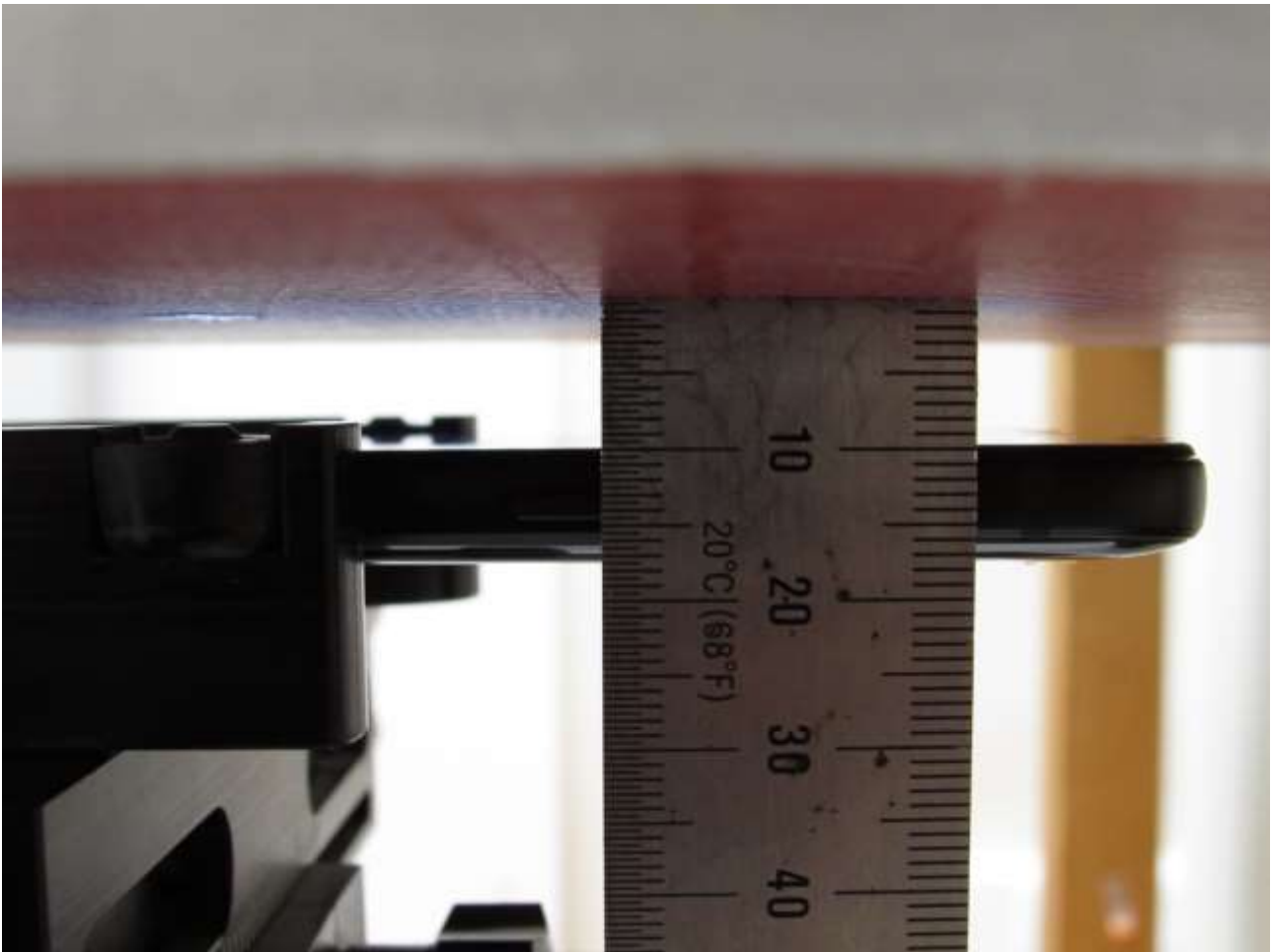


■ Test Setup Photo (Rear)



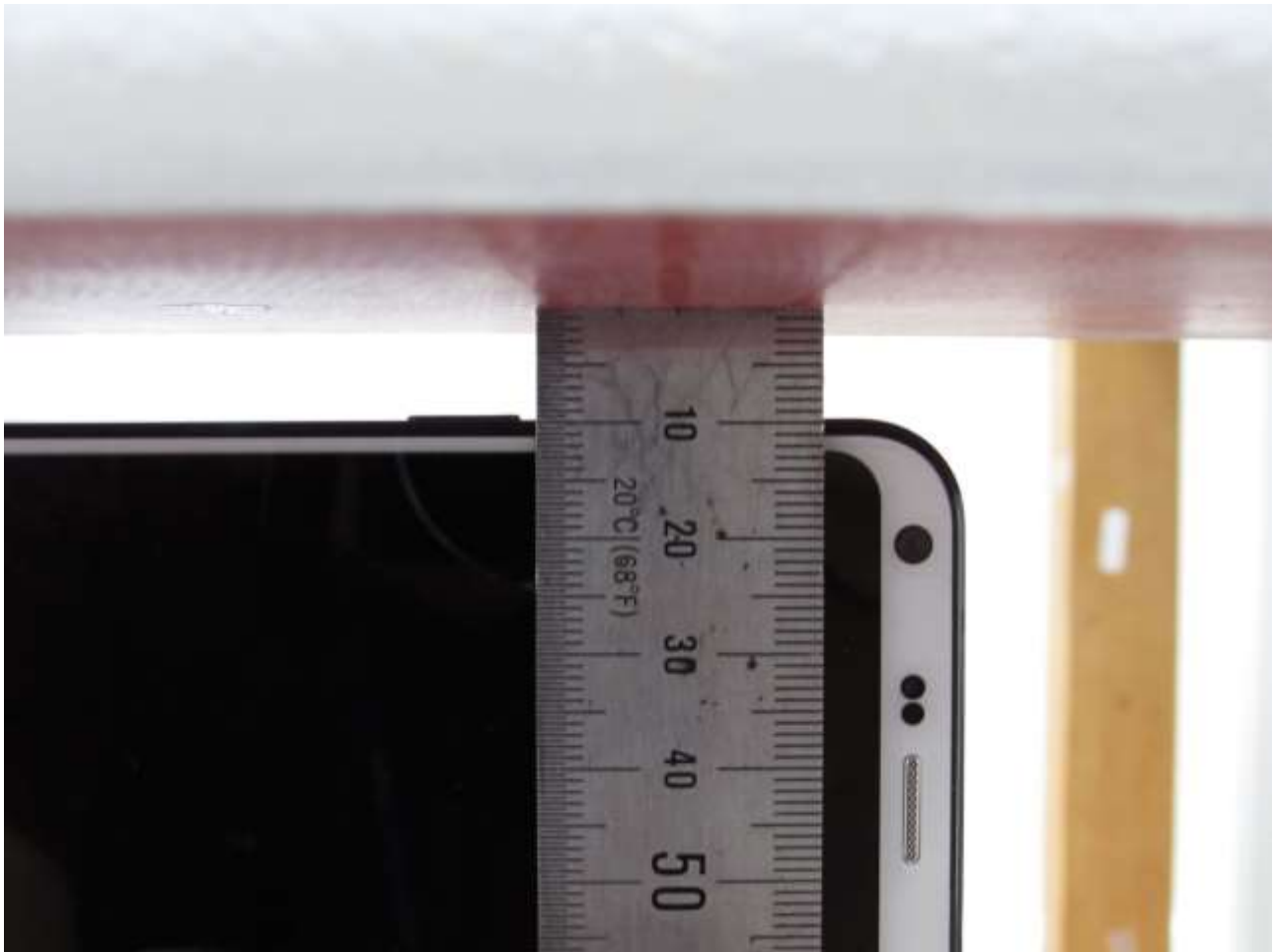
[Distance of 1.0 cm from the EUT]

■ Test Setup Photo (Front)



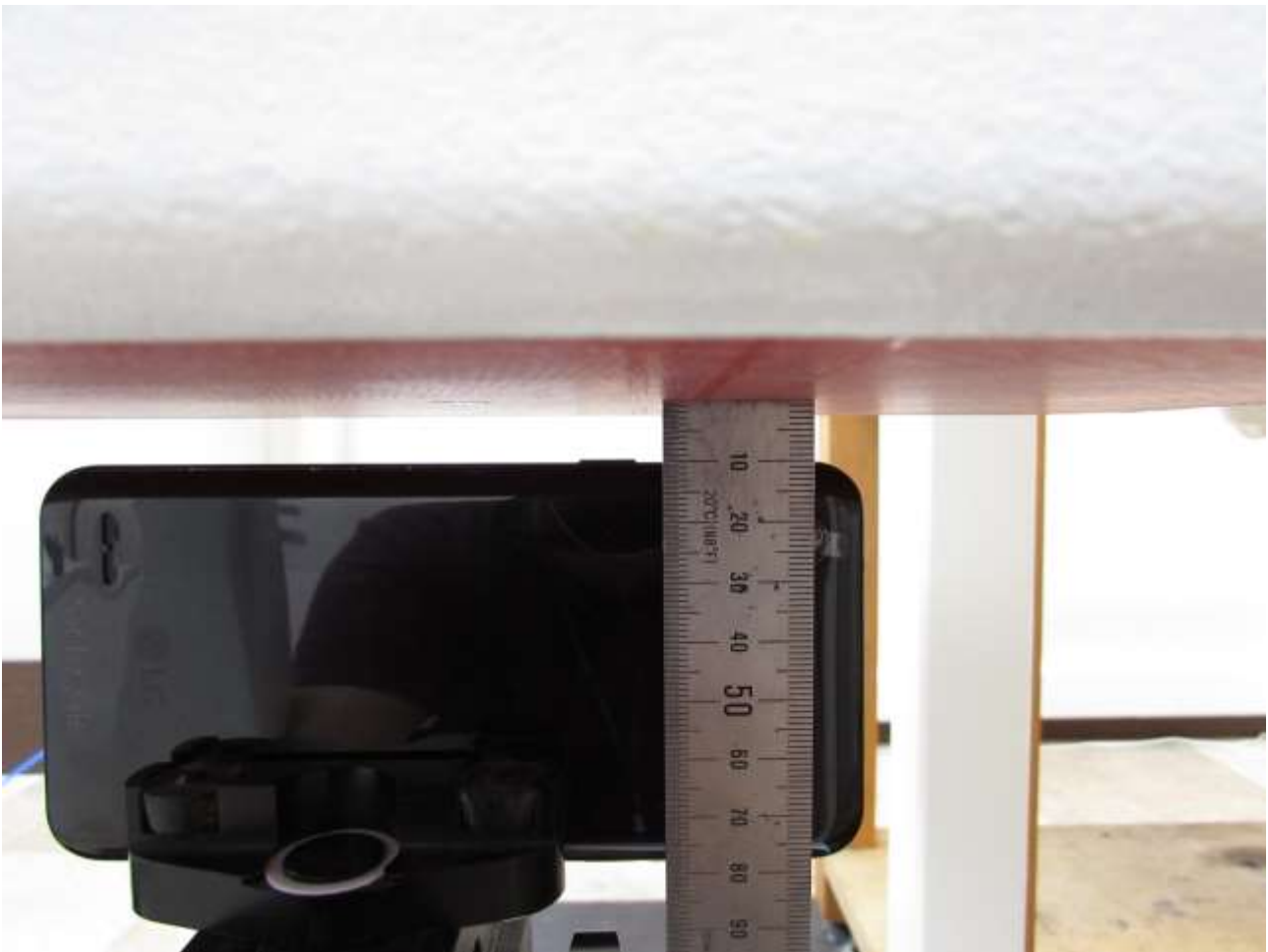
[Distance of **1.0 cm** from the EUT]

■ Test Setup Photo (Left)



[Distance of 1.0 cm from the EUT]

■ **Test Setup Photo (Right)**



[Distance of 1.0 cm from the EUT]

■ Test Setup Photo(Top)



[Distance of 1.0 cm from the EUT]

■ **Test Setup Photo(Bottom)**



[Distance of 1.0 cm from the EUT]