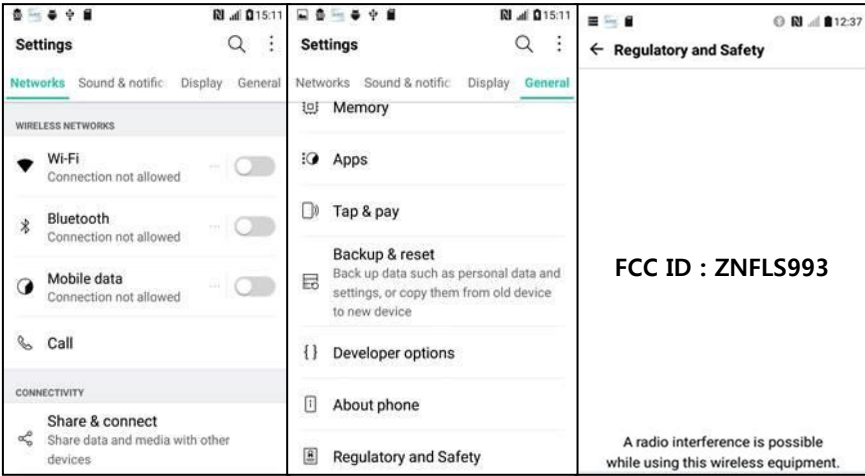


Description of E-Label on the ZNFLS993

❖ FCC ID is applied by E-Label on the device



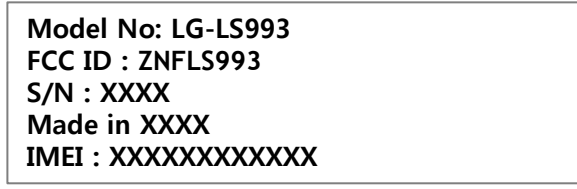
Setting Menu	
Step 1	Select General
Step 2	Select Regulatory and safety

❖ Instruction of E-Label on the user manual

Regulatory and Safety

To view regulatory marks and related information on your phone, go to **Settings > General tab > Regulatory and Safety**.

❖ FCC ID is applied on packaging Label



Note!

We, LG Electronics MobileComm USA, state that at the time of purchase, the FCC ID is readily and physically visible to the purchaser on the packaging Label per 2.925(d). So, The FCC ID will be able to survive normal shipping and handling so it is visible for inspection at the time of import. We have programmed the e-label and it is not able to be modified by any third party. Also, SIM Card in is not required to access the FCC ID number.